



Full wwPDB X-ray Structure Validation Report ⓘ

Sep 7, 2023 – 07:36 AM EDT

PDB ID : 4FVW
Title : Structure of rat nNOS heme domain in complex with N(omega)-methoxy-L-arginine
Authors : Li, H.; Poulos, T.L.
Deposited on : 2012-06-29
Resolution : 1.81 Å(reported)

This is a Full wwPDB X-ray Structure Validation Report for a publicly released PDB entry.

We welcome your comments at validation@mail.wwpdb.org

A user guide is available at

<https://www.wwpdb.org/validation/2017/XrayValidationReportHelp>

with specific help available everywhere you see the ⓘ symbol.

The types of validation reports are described at

<http://www.wwpdb.org/validation/2017/FAQs#types>.

The following versions of software and data (see [references ⓘ](#)) were used in the production of this report:

MolProbity : 4.02b-467
Mogul : 1.8.5 (274361), CSD as541be (2020)
Xtriage (Phenix) : 1.13
EDS : 2.35
buster-report : 1.1.7 (2018)
Percentile statistics : 20191225.v01 (using entries in the PDB archive December 25th 2019)
Refmac : 5.8.0158
CCP4 : 7.0.044 (Gargrove)
Ideal geometry (proteins) : Engh & Huber (2001)
Ideal geometry (DNA, RNA) : Parkinson et al. (1996)
Validation Pipeline (wwPDB-VP) : 2.35

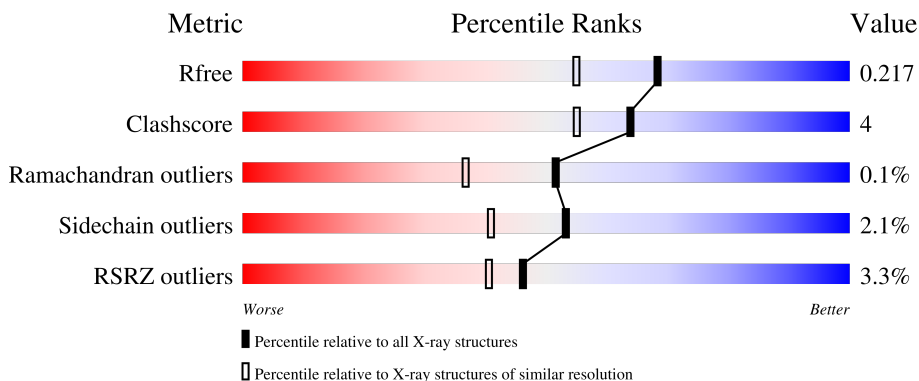
1 Overall quality at a glance

The following experimental techniques were used to determine the structure:

X-RAY DIFFRACTION

The reported resolution of this entry is 1.81 Å.

Percentile scores (ranging between 0-100) for global validation metrics of the entry are shown in the following graphic. The table shows the number of entries on which the scores are based.



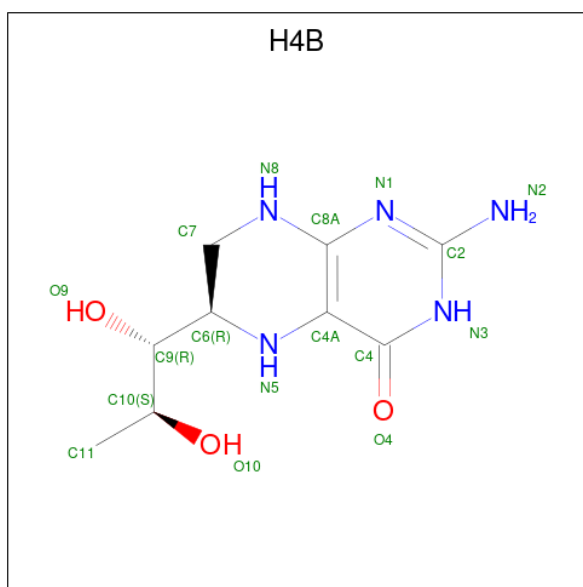
Metric	Whole archive (#Entries)	Similar resolution (#Entries, resolution range(Å))
R_{free}	130704	7484 (1.84-1.80)
Clashscore	141614	8401 (1.84-1.80)
Ramachandran outliers	138981	8290 (1.84-1.80)
Sidechain outliers	138945	8290 (1.84-1.80)
RSRZ outliers	127900	7371 (1.84-1.80)

The table below summarises the geometric issues observed across the polymeric chains and their fit to the electron density. The red, orange, yellow and green segments of the lower bar indicate the fraction of residues that contain outliers for ≥ 3 , 2, 1 and 0 types of geometric quality criteria respectively. A grey segment represents the fraction of residues that are not modelled. The numeric value for each fraction is indicated below the corresponding segment, with a dot representing fractions $\leq 5\%$. The upper red bar (where present) indicates the fraction of residues that have poor fit to the electron density. The numeric value is given above the bar.

Mol	Chain	Length	Quality of chain
1	A	422	 4% 85% 9% . .
1	B	422	 2% 91% 6% . .

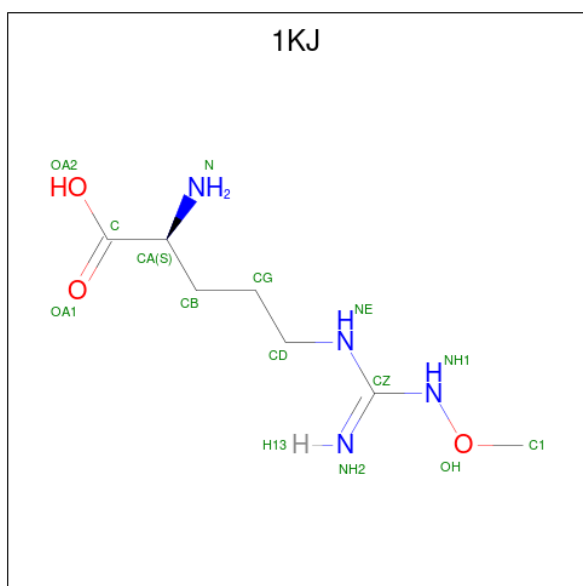
The following table lists non-polymeric compounds, carbohydrate monomers and non-standard residues in protein, DNA, RNA chains that are outliers for geometric or electron-density-fit criteria:

Mol	Type	Chain	Res	Chirality	Geometry	Clashes	Electron density
4	1KJ	A	803[B]	-	-	X	-



Mol	Chain	Residues	Atoms				ZeroOcc	AltConf
			Total	C	N	O		
3	A	1	17	9	5	3	0	0
3	B	1	17	9	5	3	0	0

- Molecule 4 is N 5 -(N-methoxycarbamimidoyl)-L-ornithine (three-letter code: 1KJ) (formula: $C_7H_{16}N_4O_3$).



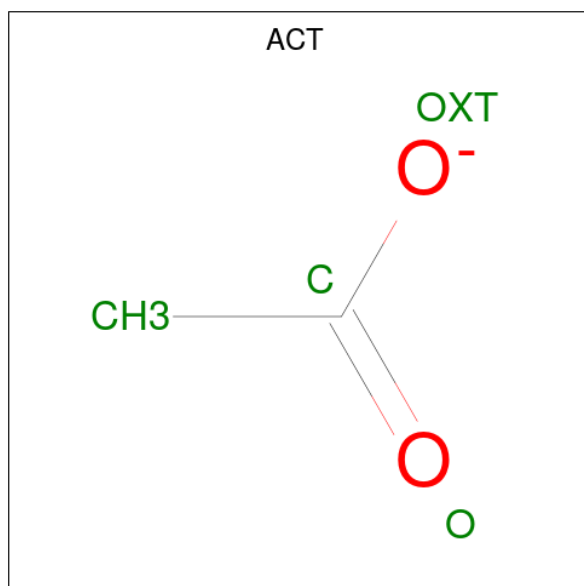
Mol	Chain	Residues	Atoms				ZeroOcc	AltConf
			Total	C	N	O		
4	A	1	15	8	4	3	0	1

Continued on next page...

Continued from previous page...

Mol	Chain	Residues	Atoms				ZeroOcc	AltConf
4	B	1	Total	C	N	O	0	1
			15	8	4	3		

- Molecule 5 is ACETATE ION (three-letter code: ACT) (formula: C₂H₃O₂).



Mol	Chain	Residues	Atoms			ZeroOcc	AltConf
5	A	1	Total	C	O	0	0
			4	2	2		
5	B	1	Total	C	O	0	0
			4	2	2		

- Molecule 6 is ZINC ION (three-letter code: ZN) (formula: Zn).

Mol	Chain	Residues	Atoms		ZeroOcc	AltConf
6	A	1	Total	Zn	0	0
			1	1		

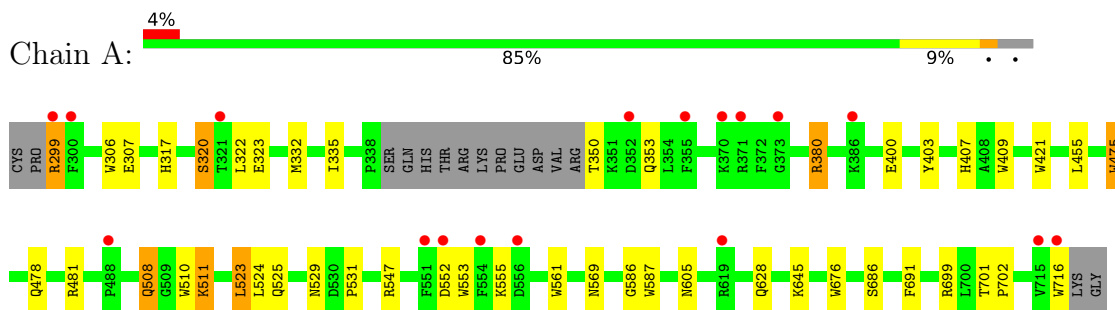
- Molecule 7 is water.

Mol	Chain	Residues	Atoms		ZeroOcc	AltConf
7	A	159	Total	O	0	1
			159	159		
7	B	215	Total	O	0	1
			215	215		

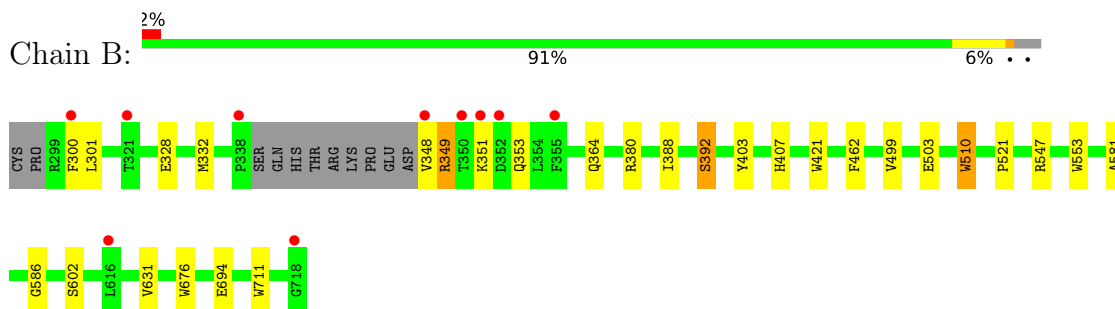
3 Residue-property plots [i](#)

These plots are drawn for all protein, RNA, DNA and oligosaccharide chains in the entry. The first graphic for a chain summarises the proportions of the various outlier classes displayed in the second graphic. The second graphic shows the sequence view annotated by issues in geometry and electron density. Residues are color-coded according to the number of geometric quality criteria for which they contain at least one outlier: green = 0, yellow = 1, orange = 2 and red = 3 or more. A red dot above a residue indicates a poor fit to the electron density ($RSRZ > 2$). Stretches of 2 or more consecutive residues without any outlier are shown as a green connector. Residues present in the sample, but not in the model, are shown in grey.

- Molecule 1: Nitric oxide synthase, brain



- Molecule 1: Nitric oxide synthase, brain



4 Data and refinement statistics

Property	Value	Source
Space group	P 21 21 21	Depositor
Cell constants a, b, c, α , β , γ	52.15Å 111.00Å 165.31Å 90.00° 90.00° 90.00°	Depositor
Resolution (Å)	50.00 – 1.81 49.73 – 1.81	Depositor EDS
% Data completeness (in resolution range)	99.3 (50.00-1.81) 99.4 (49.73-1.81)	Depositor EDS
R_{merge}	0.08	Depositor
R_{sym}	0.08	Depositor
$\langle I/\sigma(I) \rangle$ ¹	2.15 (at 1.81Å)	Xtrriage
Refinement program	REFMAC	Depositor
R, R_{free}	0.181 , 0.218 0.180 , 0.217	Depositor DCC
R_{free} test set	4391 reflections (4.97%)	wwPDB-VP
Wilson B-factor (Å ²)	32.5	Xtrriage
Anisotropy	0.569	Xtrriage
Bulk solvent k_{sol} (e/Å ³), B_{sol} (Å ²)	0.35 , 43.9	EDS
L-test for twinning ²	$\langle L \rangle = 0.48$, $\langle L^2 \rangle = 0.31$	Xtrriage
Estimated twinning fraction	No twinning to report.	Xtrriage
F_o, F_c correlation	0.97	EDS
Total number of atoms	7229	wwPDB-VP
Average B, all atoms (Å ²)	48.0	wwPDB-VP

Xtrriage's analysis on translational NCS is as follows: *The largest off-origin peak in the Patterson function is 4.74% of the height of the origin peak. No significant pseudotranslation is detected.*

¹Intensities estimated from amplitudes.

²Theoretical values of $\langle |L| \rangle$, $\langle L^2 \rangle$ for acentric reflections are 0.5, 0.333 respectively for untwinned datasets, and 0.375, 0.2 for perfectly twinned datasets.

5 Model quality [i](#)

5.1 Standard geometry [i](#)

Bond lengths and bond angles in the following residue types are not validated in this section: HEM, 1KJ, ZN, ACT, H4B

The Z score for a bond length (or angle) is the number of standard deviations the observed value is removed from the expected value. A bond length (or angle) with $|Z| > 5$ is considered an outlier worth inspection. RMSZ is the root-mean-square of all Z scores of the bond lengths (or angles).

Mol	Chain	Bond lengths		Bond angles	
		RMSZ	# Z >5	RMSZ	# Z >5
1	A	0.74	9/3447 (0.3%)	0.69	0/4676
1	B	0.79	5/3465 (0.1%)	0.73	1/4697 (0.0%)
All	All	0.77	14/6912 (0.2%)	0.71	1/9373 (0.0%)

All (14) bond length outliers are listed below:

Mol	Chain	Res	Type	Atoms	Z	Observed(Å)	Ideal(Å)
1	A	409	TRP	CD2-CE2	5.56	1.48	1.41
1	B	676	TRP	CD2-CE2	5.42	1.47	1.41
1	A	421	TRP	CD2-CE2	5.37	1.47	1.41
1	A	306	TRP	CD2-CE2	5.34	1.47	1.41
1	A	676	TRP	CD2-CE2	5.31	1.47	1.41
1	A	561	TRP	CD2-CE2	5.28	1.47	1.41
1	A	553	TRP	CD2-CE2	5.24	1.47	1.41
1	B	421	TRP	CD2-CE2	5.19	1.47	1.41
1	B	553	TRP	CD2-CE2	5.19	1.47	1.41
1	B	510	TRP	CD2-CE2	5.19	1.47	1.41
1	A	716	TRP	CD2-CE2	5.19	1.47	1.41
1	B	711	TRP	CD2-CE2	5.14	1.47	1.41
1	A	510	TRP	CD2-CE2	5.13	1.47	1.41
1	A	475	TRP	CD2-CE2	5.13	1.47	1.41

All (1) bond angle outliers are listed below:

Mol	Chain	Res	Type	Atoms	Z	Observed(°)	Ideal(°)
1	B	380	ARG	NE-CZ-NH2	-5.33	117.64	120.30

There are no chirality outliers.

There are no planarity outliers.

5.2 Too-close contacts

In the following table, the Non-H and H(model) columns list the number of non-hydrogen atoms and hydrogen atoms in the chain respectively. The H(added) column lists the number of hydrogen atoms added and optimized by MolProbity. The Clashes column lists the number of clashes within the asymmetric unit, whereas Symm-Clashes lists symmetry-related clashes.

Mol	Chain	Non-H	H(model)	H(added)	Clashes	Symm-Clashes
1	A	3336	0	3253	35	0
1	B	3360	0	3280	22	0
2	A	43	0	30	4	0
2	B	43	0	30	3	0
3	A	17	0	15	0	0
3	B	17	0	15	0	0
4	A	15	0	6	7	0
4	B	15	0	6	5	0
5	A	4	0	3	0	0
5	B	4	0	3	0	0
6	A	1	0	0	0	0
7	A	159	0	0	2	0
7	B	215	0	0	2	0
All	All	7229	0	6641	57	0

The all-atom clashscore is defined as the number of clashes found per 1000 atoms (including hydrogen atoms). The all-atom clashscore for this structure is 4.

All (57) close contacts within the same asymmetric unit are listed below, sorted by their clash magnitude.

Atom-1	Atom-2	Interatomic distance (Å)	Clash overlap (Å)
1:B:586:GLY:H	4:B:803[B]:1KJ:H16	1.24	1.02
1:A:307[B]:GLU:OE1	1:B:602[B]:SER:CB	2.16	0.93
1:B:586:GLY:N	4:B:803[B]:1KJ:H16	1.82	0.93
1:A:307[B]:GLU:OE1	1:B:602[B]:SER:OG	1.89	0.89
1:A:307[B]:GLU:OE1	1:B:602[B]:SER:HB3	1.78	0.82
1:A:508:GLN:HE21	1:A:508:GLN:HA	1.46	0.80
2:A:801:HEM:HMC2	2:A:801:HEM:HBC2	1.69	0.73
1:A:508:GLN:HE21	1:A:508:GLN:CA	2.01	0.71
1:A:508:GLN:HA	1:A:508:GLN:NE2	2.07	0.70
2:A:801:HEM:C4B	4:A:803[B]:1KJ:H18	2.26	0.70
1:B:348:VAL:O	1:B:349:ARG:HB2	1.92	0.68
1:B:586:GLY:CA	4:B:803[B]:1KJ:H16	2.27	0.65
1:A:586:GLY:CA	4:A:803[B]:1KJ:H16	2.29	0.63
1:B:300:PHE:HB3	7:B:1084:HOH:O	2.00	0.60

Continued on next page...

Continued from previous page...

Atom-1	Atom-2	Interatomic distance (Å)	Clash overlap (Å)
1:A:586:GLY:N	4:A:803[B]:1KJ:H16	2.17	0.59
1:B:499:VAL:O	1:B:503:GLU:HG3	2.02	0.59
1:A:523:LEU:HD22	1:A:531:PRO:HB2	1.85	0.58
1:A:586:GLY:H	4:A:803[B]:1KJ:H16	1.71	0.56
2:A:801:HEM:CHC	4:A:803[B]:1KJ:H18	2.36	0.56
1:A:525:GLN:HG3	1:A:529:ASN:O	2.08	0.54
1:B:586:GLY:CA	4:B:803[B]:1KJ:C1	2.85	0.54
1:A:323:GLU:HG2	1:B:328:GLU:HB3	1.90	0.54
1:A:508:GLN:CA	1:A:508:GLN:NE2	2.70	0.54
1:A:455:LEU:HD12	1:A:587:TRP:HB3	1.91	0.53
1:A:299:ARG:O	1:A:299:ARG:HG2	2.10	0.52
1:A:380:ARG:HD3	1:A:400:GLU:OE1	2.09	0.52
1:A:322:LEU:HD13	1:A:699:ARG:HH21	1.76	0.49
1:A:628:GLN:HG2	1:B:631:VAL:HG11	1.93	0.49
2:A:801:HEM:HBC2	2:A:801:HEM:CMC	2.42	0.49
1:B:403:TYR:CE1	1:B:407:HIS:CE1	3.01	0.48
1:B:388:ILE:O	1:B:392:SER:HA	2.13	0.48
1:B:586:GLY:HA3	4:B:803[B]:1KJ:C1	2.44	0.48
2:B:801:HEM:HBC2	2:B:801:HEM:CMC	2.44	0.48
1:A:335:ILE:HD13	1:B:694:GLU:HB3	1.95	0.47
1:A:317:HIS:O	1:A:320:SER:HB3	2.16	0.46
1:A:332:MET:HE3	1:B:301:LEU:HD22	1.98	0.45
1:A:475:TRP:HB2	1:A:523:LEU:HB3	1.98	0.44
1:A:350:THR:N	1:A:353:GLN:HE21	2.15	0.44
1:A:701:THR:HA	1:A:702:PRO:C	2.38	0.44
1:A:350:THR:OG1	1:A:353:GLN:HG3	2.17	0.43
1:A:686:SER:HA	1:A:691:PHE:CG	2.53	0.43
1:B:462:PHE:HB2	1:B:581:ALA:HB3	1.99	0.43
2:B:801:HEM:CBB	2:B:801:HEM:HHC	2.49	0.43
1:A:332:MET:CE	1:B:301:LEU:HD22	2.48	0.42
1:A:403:TYR:CE1	1:A:407:HIS:CE1	3.07	0.42
1:A:478:GLN:HB2	1:A:481:ARG:HG3	2.00	0.42
1:A:511:LYS:O	1:A:511:LYS:HG3	2.19	0.42
1:B:348:VAL:O	1:B:349:ARG:CB	2.64	0.41
1:A:555:LYS:N	7:A:1025:HOH:O	2.53	0.41
1:B:364:GLN:NE2	7:B:1031:HOH:O	2.50	0.41
1:B:510:TRP:CE2	1:B:521:PRO:HD3	2.56	0.41
2:B:801:HEM:HHC	2:B:801:HEM:HBB2	2.03	0.41
1:A:455:LEU:HD12	1:A:587:TRP:CB	2.49	0.40
1:A:605:ASN:ND2	7:A:916:HOH:O	2.48	0.40
1:A:524:LEU:O	1:A:531:PRO:HA	2.22	0.40

Continued on next page...

Continued from previous page...

Atom-1	Atom-2	Interatomic distance (Å)	Clash overlap (Å)
1:A:586:GLY:HA3	4:A:803[B]:1KJ:H16	2.02	0.40

There are no symmetry-related clashes.

5.3 Torsion angles [i](#)

5.3.1 Protein backbone [i](#)

In the following table, the Percentiles column shows the percent Ramachandran outliers of the chain as a percentile score with respect to all X-ray entries followed by that with respect to entries of similar resolution.

The Analysed column shows the number of residues for which the backbone conformation was analysed, and the total number of residues.

Mol	Chain	Analysed	Favoured	Allowed	Outliers	Percentiles	
1	A	409/422 (97%)	400 (98%)	9 (2%)	0	100	100
1	B	411/422 (97%)	403 (98%)	7 (2%)	1 (0%)	47	33
All	All	820/844 (97%)	803 (98%)	16 (2%)	1 (0%)	51	37

All (1) Ramachandran outliers are listed below:

Mol	Chain	Res	Type
1	B	349	ARG

5.3.2 Protein sidechains [i](#)

In the following table, the Percentiles column shows the percent sidechain outliers of the chain as a percentile score with respect to all X-ray entries followed by that with respect to entries of similar resolution.

The Analysed column shows the number of residues for which the sidechain conformation was analysed, and the total number of residues.

Mol	Chain	Analysed	Rotameric	Outliers	Percentiles	
1	A	369/377 (98%)	359 (97%)	10 (3%)	44	30
1	B	370/377 (98%)	365 (99%)	5 (1%)	67	58
All	All	739/754 (98%)	724 (98%)	15 (2%)	53	43

All (15) residues with a non-rotameric sidechain are listed below:

Mol	Chain	Res	Type
1	A	299	ARG
1	A	320	SER
1	A	380	ARG
1	A	508	GLN
1	A	511	LYS
1	A	523	LEU
1	A	547	ARG
1	A	552	ASP
1	A	569	ASN
1	A	645	LYS
1	B	332	MET
1	B	351	LYS
1	B	353	GLN
1	B	392	SER
1	B	547	ARG

Sometimes sidechains can be flipped to improve hydrogen bonding and reduce clashes. All (13) such sidechains are listed below:

Mol	Chain	Res	Type
1	A	454	ASN
1	A	508	GLN
1	A	527	ASN
1	A	569	ASN
1	A	605	ASN
1	A	628	GLN
1	A	697	ASN
1	B	364	GLN
1	B	454	ASN
1	B	535	GLN
1	B	601	ASN
1	B	605	ASN
1	B	697	ASN

5.3.3 RNA [i](#)

There are no RNA molecules in this entry.

5.4 Non-standard residues in protein, DNA, RNA chains [i](#)

There are no non-standard protein/DNA/RNA residues in this entry.

5.5 Carbohydrates [i](#)

There are no monosaccharides in this entry.

5.6 Ligand geometry [i](#)

Of 11 ligands modelled in this entry, 1 is monoatomic - leaving 10 for Mogul analysis.

In the following table, the Counts columns list the number of bonds (or angles) for which Mogul statistics could be retrieved, the number of bonds (or angles) that are observed in the model and the number of bonds (or angles) that are defined in the Chemical Component Dictionary. The Link column lists molecule types, if any, to which the group is linked. The Z score for a bond length (or angle) is the number of standard deviations the observed value is removed from the expected value. A bond length (or angle) with $|Z| > 2$ is considered an outlier worth inspection. RMSZ is the root-mean-square of all Z scores of the bond lengths (or angles).

Mol	Type	Chain	Res	Link	Bond lengths			Bond angles		
					Counts	RMSZ	# Z > 2	Counts	RMSZ	# Z > 2
4	1KJ	B	803[A]	-	11,13,13	2.80	1 (9%)	12,15,15	1.36	3 (25%)
5	ACT	A	804	-	3,3,3	0.75	0	3,3,3	0.70	0
3	H4B	B	802	-	16,18,18	1.24	2 (12%)	11,26,26	2.69	5 (45%)
3	H4B	A	802	-	16,18,18	0.96	0	11,26,26	2.84	6 (54%)
4	1KJ	B	803[B]	-	11,13,13	2.80	1 (9%)	12,15,15	2.15	4 (33%)
5	ACT	B	804	-	3,3,3	0.94	0	3,3,3	0.30	0
4	1KJ	A	803[A]	-	11,13,13	3.24	1 (9%)	12,15,15	1.10	1 (8%)
2	HEM	A	801	1	41,50,50	2.33	14 (34%)	45,82,82	3.12	22 (48%)
4	1KJ	A	803[B]	-	11,13,13	3.24	1 (9%)	12,15,15	1.58	2 (16%)
2	HEM	B	801	1	41,50,50	2.22	15 (36%)	45,82,82	3.25	23 (51%)

In the following table, the Chirals column lists the number of chiral outliers, the number of chiral centers analysed, the number of these observed in the model and the number defined in the Chemical Component Dictionary. Similar counts are reported in the Torsion and Rings columns. '-' means no outliers of that kind were identified.

Mol	Type	Chain	Res	Link	Chirals	Torsions	Rings
4	1KJ	B	803[A]	-	-	1/12/14/14	-
3	H4B	B	802	-	-	0/8/17/17	0/2/2/2
3	H4B	A	802	-	-	0/8/17/17	0/2/2/2
4	1KJ	B	803[B]	-	-	1/12/14/14	-
4	1KJ	A	803[A]	-	-	2/12/14/14	-
2	HEM	A	801	1	-	1/12/54/54	-
4	1KJ	A	803[B]	-	-	2/12/14/14	-

Continued on next page...

Continued from previous page...

Mol	Type	Chain	Res	Link	Chirals	Torsions	Rings
2	HEM	B	801	1	-	0/12/54/54	-

All (35) bond length outliers are listed below:

Mol	Chain	Res	Type	Atoms	Z	Observed(Å)	Ideal(Å)
4	A	803[A]	1KJ	OH-NH1	-10.38	1.30	1.39
4	A	803[B]	1KJ	OH-NH1	-10.38	1.30	1.39
4	B	803[A]	1KJ	OH-NH1	-8.87	1.32	1.39
4	B	803[B]	1KJ	OH-NH1	-8.87	1.32	1.39
2	A	801	HEM	C3C-C2C	5.89	1.48	1.40
2	B	801	HEM	C3B-C2B	4.56	1.46	1.37
2	A	801	HEM	C3D-C2D	4.48	1.46	1.36
2	B	801	HEM	C4D-ND	-4.39	1.32	1.40
2	B	801	HEM	C3D-C2D	4.32	1.45	1.36
2	B	801	HEM	C4A-NA	4.31	1.45	1.36
2	B	801	HEM	C3C-C2C	4.29	1.46	1.40
2	A	801	HEM	CHA-C4D	4.21	1.45	1.35
2	A	801	HEM	C1A-NA	4.15	1.44	1.36
2	B	801	HEM	CHA-C4D	4.09	1.45	1.35
2	A	801	HEM	C2C-C1C	3.74	1.51	1.42
2	A	801	HEM	C4A-NA	3.64	1.43	1.36
2	A	801	HEM	C3B-C2B	3.51	1.44	1.37
2	A	801	HEM	C2A-C3A	3.44	1.47	1.37
2	A	801	HEM	C1B-NB	-3.21	1.34	1.40
2	A	801	HEM	C4D-ND	-3.20	1.34	1.40
2	B	801	HEM	C2A-C3A	3.17	1.47	1.37
2	B	801	HEM	C1A-NA	3.16	1.42	1.36
2	A	801	HEM	FE-NB	2.86	2.11	1.96
2	A	801	HEM	CHB-C1B	2.69	1.41	1.35
2	B	801	HEM	CHB-C1B	2.57	1.41	1.35
2	A	801	HEM	FE-ND	2.51	2.09	1.96
2	B	801	HEM	C1B-NB	-2.47	1.36	1.40
3	B	802	H4B	C7-N8	2.44	1.48	1.44
2	B	801	HEM	C1D-ND	-2.33	1.34	1.38
2	A	801	HEM	C4A-CHB	2.27	1.47	1.41
3	B	802	H4B	C7-C6	2.24	1.54	1.52
2	B	801	HEM	C2C-C1C	2.15	1.47	1.42
2	B	801	HEM	FE-ND	2.15	2.07	1.96
2	B	801	HEM	O2A-CGA	-2.14	1.23	1.30
2	B	801	HEM	FE-NB	2.01	2.06	1.96

All (66) bond angle outliers are listed below:

Mol	Chain	Res	Type	Atoms	Z	Observed(°)	Ideal(°)
2	B	801	HEM	C3B-C2B-C1B	-9.16	99.69	106.49
2	A	801	HEM	C3B-C2B-C1B	-8.83	99.93	106.49
2	A	801	HEM	C2B-C1B-NB	7.99	119.31	109.84
2	B	801	HEM	C2B-C1B-NB	7.73	119.00	109.84
2	B	801	HEM	CBA-CAA-C2A	-6.92	100.82	112.62
3	B	802	H4B	C8A-C4A-C4	6.16	120.05	114.57
2	A	801	HEM	C3D-C4D-ND	6.07	116.92	110.17
2	B	801	HEM	C2D-C1D-ND	6.00	117.07	109.88
3	A	802	H4B	C8A-C4A-C4	5.89	119.80	114.57
2	B	801	HEM	C3D-C4D-ND	5.76	116.58	110.17
4	B	803[B]	1KJ	C1-OH-NH1	-5.76	103.73	109.76
2	A	801	HEM	C2D-C1D-ND	5.58	116.56	109.88
2	B	801	HEM	C1D-C2D-C3D	-5.27	101.42	106.96
2	B	801	HEM	C4A-C3A-C2A	-4.98	103.53	107.00
2	A	801	HEM	CMB-C2B-C1B	4.90	132.50	125.04
2	A	801	HEM	CBA-CAA-C2A	-4.74	104.54	112.62
2	A	801	HEM	C1B-NB-C4B	-4.39	100.54	105.07
2	A	801	HEM	C1D-C2D-C3D	-4.37	102.36	106.96
4	A	803[B]	1KJ	C1-OH-NH1	-3.96	105.61	109.76
2	A	801	HEM	CMC-C2C-C3C	3.81	131.80	124.68
2	B	801	HEM	CHD-C1D-C2D	-3.75	119.12	124.98
3	A	802	H4B	N1-C2-N3	-3.71	119.60	125.42
2	A	801	HEM	C4D-ND-C1D	-3.58	101.38	105.07
3	A	802	H4B	C2-N1-C8A	3.48	122.33	114.54
2	B	801	HEM	CHB-C1B-C2B	-3.44	117.22	126.72
2	B	801	HEM	C1B-NB-C4B	-3.40	101.56	105.07
2	A	801	HEM	CHD-C1D-C2D	-3.38	119.70	124.98
3	B	802	H4B	C2-N3-C4	3.26	121.10	115.93
2	B	801	HEM	CMD-C2D-C1D	3.21	129.93	125.04
3	B	802	H4B	N1-C2-N3	-3.19	120.42	125.42
2	B	801	HEM	CBD-CAD-C3D	-3.18	103.80	112.63
2	A	801	HEM	C4D-C3D-C2D	-3.03	102.48	106.90
2	B	801	HEM	C4D-C3D-C2D	-2.96	102.58	106.90
2	A	801	HEM	CBD-CAD-C3D	-2.95	104.42	112.63
3	A	802	H4B	C2-N3-C4	2.90	120.53	115.93
2	B	801	HEM	C4D-ND-C1D	-2.88	102.10	105.07
2	B	801	HEM	C4B-CHC-C1C	2.77	126.21	122.56
2	A	801	HEM	CHB-C1B-C2B	-2.76	119.09	126.72
4	B	803[A]	1KJ	OA2-C-OA1	-2.74	117.86	124.09
4	B	803[B]	1KJ	OA2-C-OA1	-2.74	117.86	124.09
2	B	801	HEM	CHC-C4B-C3B	-2.74	120.37	124.57
2	B	801	HEM	O1D-CGD-CBD	-2.74	114.28	123.08
2	B	801	HEM	CMB-C2B-C1B	2.73	129.20	125.04

Continued on next page...

Continued from previous page...

Mol	Chain	Res	Type	Atoms	Z	Observed(°)	Ideal(°)
2	A	801	HEM	C4B-C3B-C2B	-2.72	104.96	107.11
3	B	802	H4B	C2-N1-C8A	2.64	120.46	114.54
4	B	803[A]	1KJ	OA2-C-CA	2.59	122.22	113.38
4	B	803[B]	1KJ	OA2-C-CA	2.59	122.22	113.38
2	A	801	HEM	C4A-C3A-C2A	-2.57	105.20	107.00
4	B	803[A]	1KJ	NE-CZ-NH2	2.57	125.07	120.26
4	B	803[B]	1KJ	NE-CZ-NH2	2.57	125.07	120.26
3	B	802	H4B	N2-C2-N1	2.48	121.11	117.25
2	A	801	HEM	CHA-C4D-C3D	-2.47	120.69	125.33
2	B	801	HEM	CAD-C3D-C4D	2.45	128.94	124.66
2	A	801	HEM	CHC-C4B-C3B	-2.43	120.85	124.57
2	A	801	HEM	CAD-CBD-CGD	-2.41	108.42	113.60
2	A	801	HEM	C4C-CHD-C1D	2.39	125.71	122.56
2	A	801	HEM	O1D-CGD-CBD	-2.37	115.46	123.08
4	A	803[A]	1KJ	NE-CZ-NH2	2.37	124.70	120.26
4	A	803[B]	1KJ	NE-CZ-NH2	2.37	124.70	120.26
2	B	801	HEM	CHA-C4D-C3D	-2.33	120.95	125.33
3	A	802	H4B	N2-C2-N3	2.31	120.85	117.25
2	B	801	HEM	C4C-CHD-C1D	2.30	125.59	122.56
2	B	801	HEM	CMC-C2C-C3C	2.29	128.96	124.68
3	A	802	H4B	C4-C4A-N5	2.27	121.03	119.12
2	A	801	HEM	CHB-C1B-NB	-2.25	121.60	124.38
2	B	801	HEM	C4B-C3B-C2B	-2.02	105.51	107.11

There are no chirality outliers.

All (7) torsion outliers are listed below:

Mol	Chain	Res	Type	Atoms
4	A	803[A]	1KJ	OA1-C-CA-N
4	A	803[B]	1KJ	OA1-C-CA-N
4	A	803[A]	1KJ	NE-CD-CG-CB
4	A	803[B]	1KJ	NE-CD-CG-CB
4	B	803[A]	1KJ	NE-CD-CG-CB
4	B	803[B]	1KJ	NE-CD-CG-CB
2	A	801	HEM	CAD-CBD-CGD-O2D

There are no ring outliers.

4 monomers are involved in 17 short contacts:

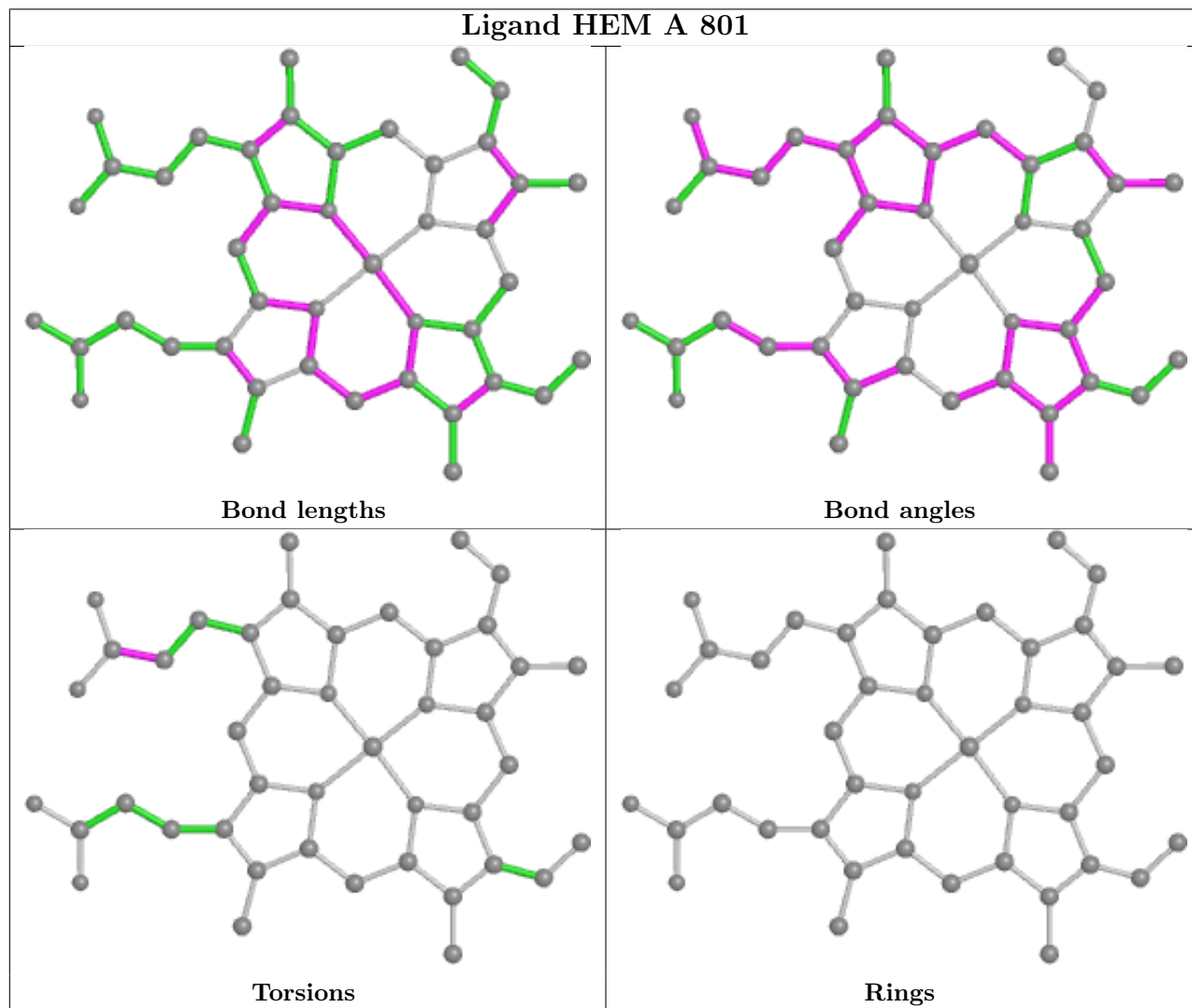
Mol	Chain	Res	Type	Clashes	Symm-Clashes
4	B	803[B]	1KJ	5	0

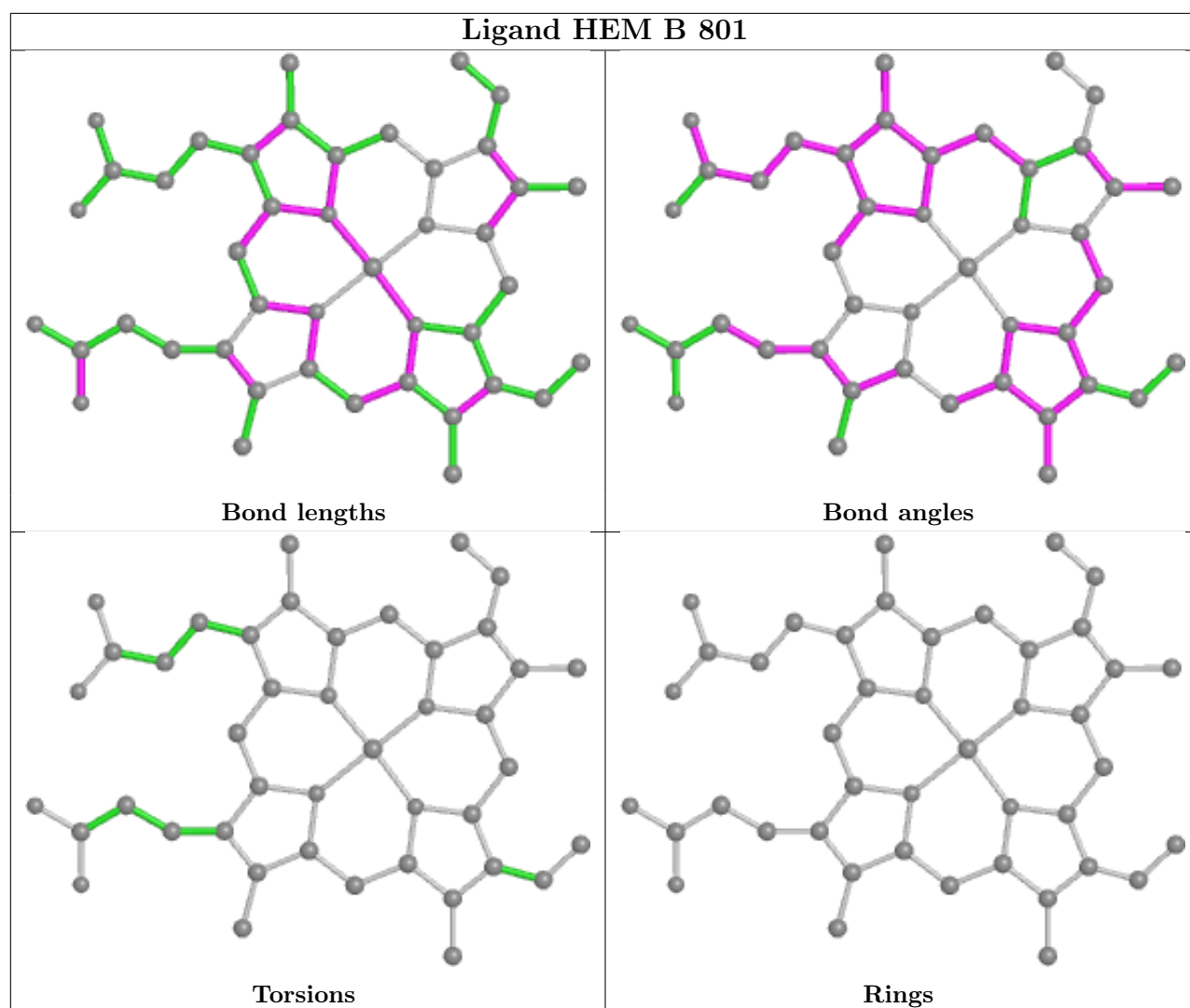
Continued on next page...

Continued from previous page...

Mol	Chain	Res	Type	Clashes	Symm-Clashes
2	A	801	HEM	4	0
4	A	803[B]	1KJ	7	0
2	B	801	HEM	3	0

The following is a two-dimensional graphical depiction of Mogul quality analysis of bond lengths, bond angles, torsion angles, and ring geometry for all instances of the Ligand of Interest. In addition, ligands with molecular weight > 250 and outliers as shown on the validation Tables will also be included. For torsion angles, if less than 5% of the Mogul distribution of torsion angles is within 10 degrees of the torsion angle in question, then that torsion angle is considered an outlier. Any bond that is central to one or more torsion angles identified as an outlier by Mogul will be highlighted in the graph. For rings, the root-mean-square deviation (RMSD) between the ring in question and similar rings identified by Mogul is calculated over all ring torsion angles. If the average RMSD is greater than 60 degrees and the minimal RMSD between the ring in question and any Mogul-identified rings is also greater than 60 degrees, then that ring is considered an outlier. The outliers are highlighted in purple. The color gray indicates Mogul did not find sufficient equivalents in the CSD to analyse the geometry.





5.7 Other polymers [i](#)

There are no such residues in this entry.

5.8 Polymer linkage issues [i](#)

There are no chain breaks in this entry.

6 Fit of model and data

6.1 Protein, DNA and RNA chains

In the following table, the column labelled ‘#RSRZ > 2’ contains the number (and percentage) of RSRZ outliers, followed by percent RSRZ outliers for the chain as percentile scores relative to all X-ray entries and entries of similar resolution. The OWAB column contains the minimum, median, 95th percentile and maximum values of the occupancy-weighted average B-factor per residue. The column labelled ‘Q < 0.9’ lists the number of (and percentage) of residues with an average occupancy less than 0.9.

Mol	Chain	Analysed	<RSRZ>	#RSRZ>2	OWAB(Å ²)	Q<0.9
1	A	407/422 (96%)	0.13	17 (4%) 36 30	27, 50, 90, 120	0
1	B	411/422 (97%)	-0.04	10 (2%) 59 54	27, 40, 66, 97	0
All	All	818/844 (96%)	0.05	27 (3%) 46 40	27, 44, 84, 120	0

All (27) RSRZ outliers are listed below:

Mol	Chain	Res	Type	RSRZ
1	B	300	PHE	7.3
1	A	355	PHE	5.2
1	B	718	GLY	5.1
1	A	488	PRO	4.2
1	B	348	VAL	3.8
1	A	715	VAL	3.5
1	A	321	THR	3.3
1	B	616	LEU	3.3
1	A	373	GLY	3.2
1	A	552	ASP	3.1
1	B	350	THR	3.0
1	B	352	ASP	3.0
1	A	619	ARG	3.0
1	A	551	PHE	2.9
1	A	716	TRP	2.7
1	A	386	LYS	2.7
1	A	299	ARG	2.7
1	B	355	PHE	2.5
1	A	352	ASP	2.5
1	A	300	PHE	2.4
1	A	370	LYS	2.3
1	B	351	LYS	2.3
1	A	556	ASP	2.2
1	B	321	THR	2.2

Continued on next page...

Continued from previous page...

Mol	Chain	Res	Type	RSRZ
1	A	371	ARG	2.1
1	B	338	PRO	2.1
1	A	554	PHE	2.0

6.2 Non-standard residues in protein, DNA, RNA chains [i](#)

There are no non-standard protein/DNA/RNA residues in this entry.

6.3 Carbohydrates [i](#)

There are no monosaccharides in this entry.

6.4 Ligands [i](#)

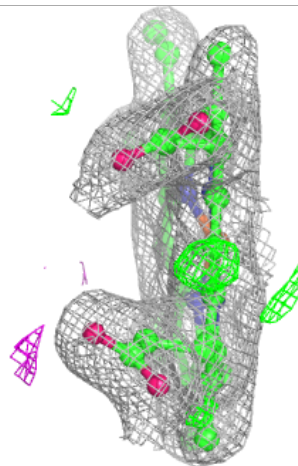
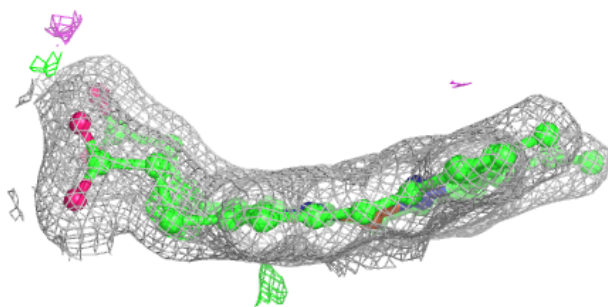
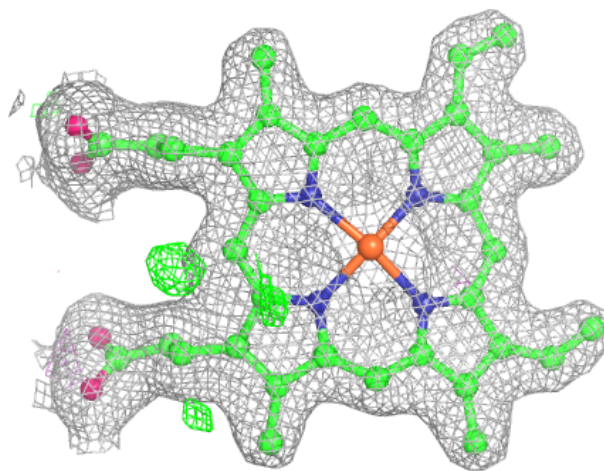
In the following table, the Atoms column lists the number of modelled atoms in the group and the number defined in the chemical component dictionary. The B-factors column lists the minimum, median, 95th percentile and maximum values of B factors of atoms in the group. The column labelled 'Q< 0.9' lists the number of atoms with occupancy less than 0.9.

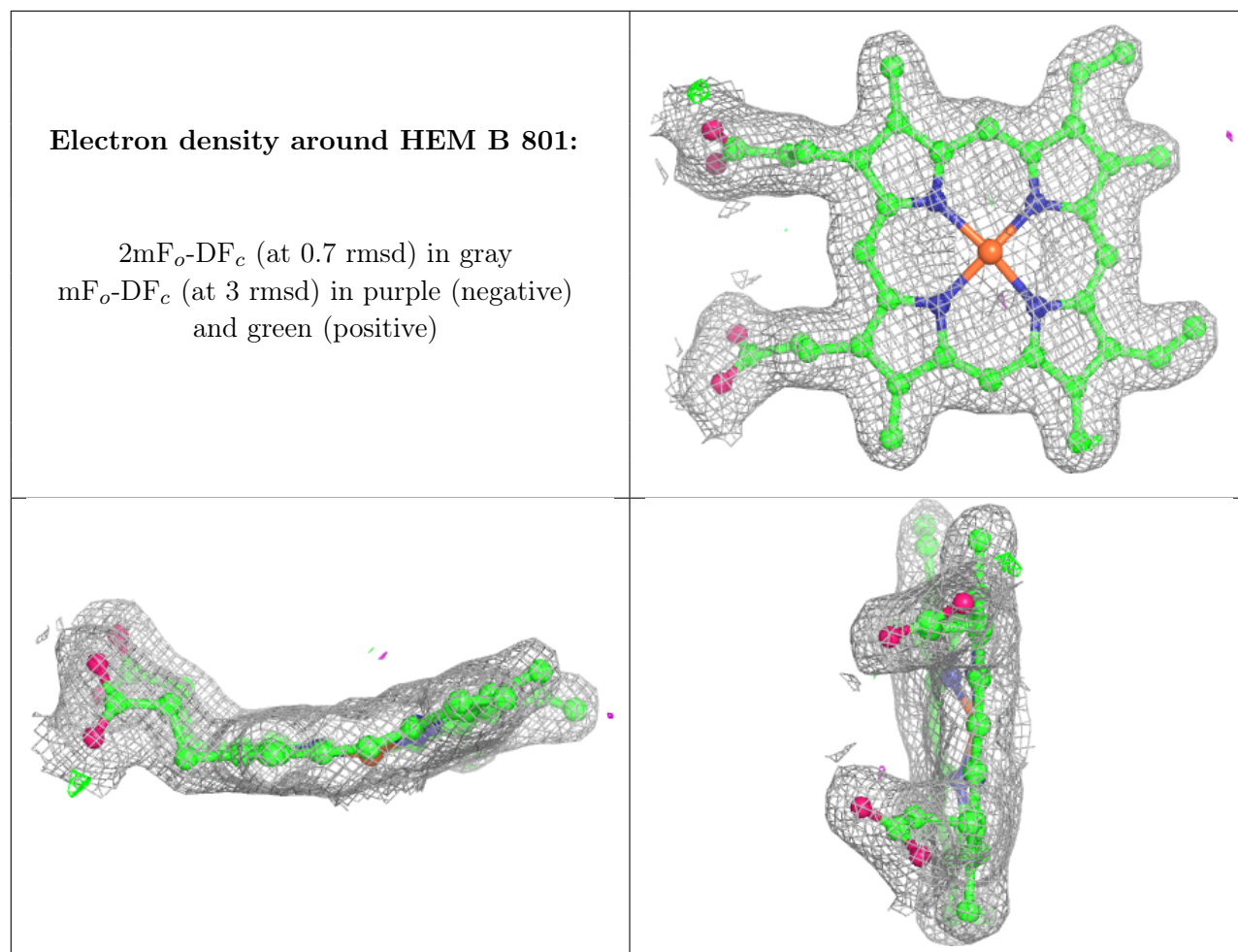
Mol	Type	Chain	Res	Atoms	RSCC	RSR	B-factors(Å ²)	Q<0.9
4	1KJ	A	803[A]	14/14	0.93	0.12	33,36,49,49	1
4	1KJ	A	803[B]	14/14	0.93	0.12	33,36,49,50	1
4	1KJ	B	803[A]	14/14	0.94	0.13	28,31,45,49	1
4	1KJ	B	803[B]	14/14	0.94	0.13	28,31,47,49	1
3	H4B	A	802	17/17	0.96	0.11	28,30,34,36	0
3	H4B	B	802	17/17	0.96	0.11	28,30,33,34	0
5	ACT	B	804	4/4	0.96	0.09	42,42,45,48	0
5	ACT	A	804	4/4	0.97	0.12	48,54,55,55	0
2	HEM	A	801	43/43	0.98	0.12	27,32,36,39	0
2	HEM	B	801	43/43	0.99	0.12	26,30,38,41	0
6	ZN	A	805	1/1	0.99	0.09	35,35,35,35	0

The following is a graphical depiction of the model fit to experimental electron density of all instances of the Ligand of Interest. In addition, ligands with molecular weight > 250 and outliers as shown on the geometry validation Tables will also be included. Each fit is shown from different orientation to approximate a three-dimensional view.

Electron density around HEM A 801:

$2mF_o-DF_c$ (at 0.7 rmsd) in gray
 mF_o-DF_c (at 3 rmsd) in purple (negative)
and green (positive)





6.5 Other polymers [i](#)

There are no such residues in this entry.