



Full wwPDB X-ray Structure Validation Report ⓘ

May 13, 2020 – 01:49 am BST

PDB ID : 5FV7
Title : Human Fen1 in complex with an N-hydroxyurea compound
Authors : Exell, J.C.; Thompson, M.J.; Finger, L.D.; Shaw, S.K.; Abbott, W.M.;
McWhirter, C.; Debreczeni, J.E.; Jones, C.D.; Nissink, J.W.M.; Ward, T.A.;
Sioberg, C.W.L.; Molina, D.M.; Durant, S.T.; Grasby, J.A.
Deposited on : 2016-02-03
Resolution : 2.84 Å(reported)

This is a Full wwPDB X-ray Structure Validation Report for a publicly released PDB entry.

We welcome your comments at validation@mail.wwpdb.org

A user guide is available at

<https://www.wwpdb.org/validation/2017/XrayValidationReportHelp>

with specific help available everywhere you see the ⓘ symbol.

The following versions of software and data (see [references ⓘ](#)) were used in the production of this report:

MolProbity : 4.02b-467
Mogul : 1.8.5 (274361), CSD as541be (2020)
Xtriage (Phenix) : 1.13
EDS : 2.11
buster-report : 1.1.7 (2018)
Percentile statistics : 20191225.v01 (using entries in the PDB archive December 25th 2019)
Refmac : 5.8.0158
CCP4 : 7.0.044 (Gargrove)
Ideal geometry (proteins) : Engh & Huber (2001)
Ideal geometry (DNA, RNA) : Parkinson et al. (1996)
Validation Pipeline (wwPDB-VP) : 2.11

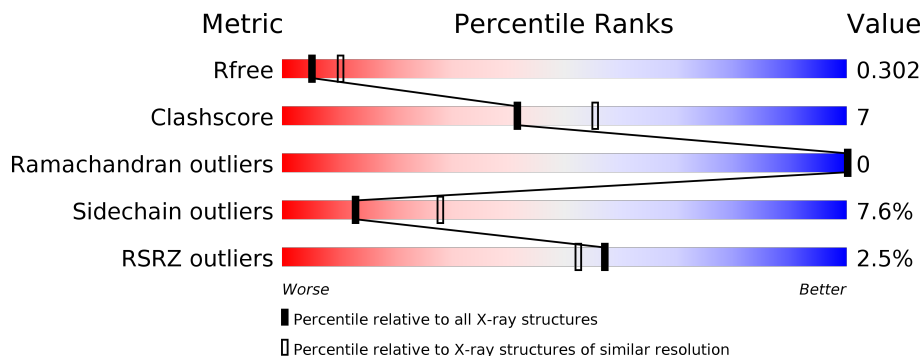
1 Overall quality at a glance

The following experimental techniques were used to determine the structure:

X-RAY DIFFRACTION

The reported resolution of this entry is 2.84 Å.

Percentile scores (ranging between 0-100) for global validation metrics of the entry are shown in the following graphic. The table shows the number of entries on which the scores are based.



Metric	Whole archive (#Entries)	Similar resolution (#Entries, resolution range(Å))
R_{free}	130704	1031 (2.86-2.82)
Clashscore	141614	1078 (2.86-2.82)
Ramachandran outliers	138981	1050 (2.86-2.82)
Sidechain outliers	138945	1051 (2.86-2.82)
RSRZ outliers	127900	1019 (2.86-2.82)

The table below summarises the geometric issues observed across the polymeric chains and their fit to the electron density. The red, orange, yellow and green segments on the lower bar indicate the fraction of residues that contain outliers for ≥ 3 , 2, 1 and 0 types of geometric quality criteria respectively. A grey segment represents the fraction of residues that are not modelled. The numeric value for each fraction is indicated below the corresponding segment, with a dot representing fractions $\leq 5\%$. The upper red bar (where present) indicates the fraction of residues that have poor fit to the electron density. The numeric value is given above the bar.

Mol	Chain	Length	Quality of chain
1	A	353	 % 65% 14% • 20%
1	B	353	 3% 61% 15% • 22%

2 Entry composition [i](#)

There are 4 unique types of molecules in this entry. The entry contains 4268 atoms, of which 0 are hydrogens and 0 are deuteriums.

In the tables below, the ZeroOcc column contains the number of atoms modelled with zero occupancy, the AltConf column contains the number of residues with at least one atom in alternate conformation and the Trace column contains the number of residues modelled with at most 2 atoms.

- Molecule 1 is a protein called FLAP ENDONUCLEASE 1.

Mol	Chain	Residues	Atoms					ZeroOcc	AltConf	Trace
			Total	C	N	O	S			
1	A	283	2180	1389	365	411	15	0	1	0
1	B	274	2037	1301	334	387	15	0	0	0

There are 34 discrepancies between the modelled and reference sequences:

Chain	Residue	Modelled	Actual	Comment	Reference
A	337	LEU	-	expression tag	UNP P39748
A	338	GLU	-	expression tag	UNP P39748
A	339	VAL	-	expression tag	UNP P39748
A	340	LEU	-	expression tag	UNP P39748
A	341	PHE	-	expression tag	UNP P39748
A	342	GLN	-	expression tag	UNP P39748
A	343	GLY	-	expression tag	UNP P39748
A	344	PRO	-	expression tag	UNP P39748
A	345	GLY	-	expression tag	UNP P39748
A	346	GLY	-	expression tag	UNP P39748
A	347	GLY	-	expression tag	UNP P39748
A	348	HIS	-	expression tag	UNP P39748
A	349	HIS	-	expression tag	UNP P39748
A	350	HIS	-	expression tag	UNP P39748
A	351	HIS	-	expression tag	UNP P39748
A	352	HIS	-	expression tag	UNP P39748
A	353	HIS	-	expression tag	UNP P39748
B	337	LEU	-	expression tag	UNP P39748
B	338	GLU	-	expression tag	UNP P39748
B	339	VAL	-	expression tag	UNP P39748
B	340	LEU	-	expression tag	UNP P39748
B	341	PHE	-	expression tag	UNP P39748
B	342	GLN	-	expression tag	UNP P39748
B	343	GLY	-	expression tag	UNP P39748
B	344	PRO	-	expression tag	UNP P39748

Continued on next page...

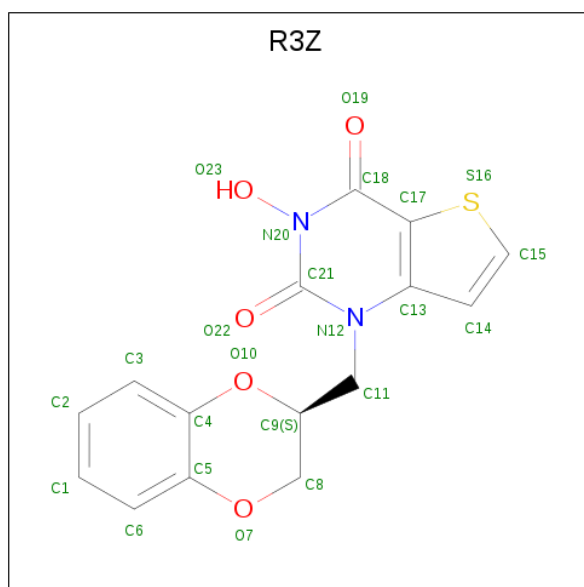
Continued from previous page...

Chain	Residue	Modelled	Actual	Comment	Reference
B	345	GLY	-	expression tag	UNP P39748
B	346	GLY	-	expression tag	UNP P39748
B	347	GLY	-	expression tag	UNP P39748
B	348	HIS	-	expression tag	UNP P39748
B	349	HIS	-	expression tag	UNP P39748
B	350	HIS	-	expression tag	UNP P39748
B	351	HIS	-	expression tag	UNP P39748
B	352	HIS	-	expression tag	UNP P39748
B	353	HIS	-	expression tag	UNP P39748

- Molecule 2 is MAGNESIUM ION (three-letter code: MG) (formula: Mg).

Mol	Chain	Residues	Atoms	ZeroOcc	AltConf
2	B	2	Total Mg 2 2	0	0
2	A	2	Total Mg 2 2	0	0

- Molecule 3 is 1-[(2S)-2,3-dihydro-1,4-benzodioxin-2-ylmethyl]-3-hydroxythieno[3,2-d]pyrimidine-2,4(1H,3H)-dione (three-letter code: R3Z) (formula: C₁₅H₁₂N₂O₅S).



Mol	Chain	Residues	Atoms	ZeroOcc	AltConf
3	A	1	Total C N O S 23 15 2 5 1	0	0
3	B	1	Total C N O S 23 15 2 5 1	0	0

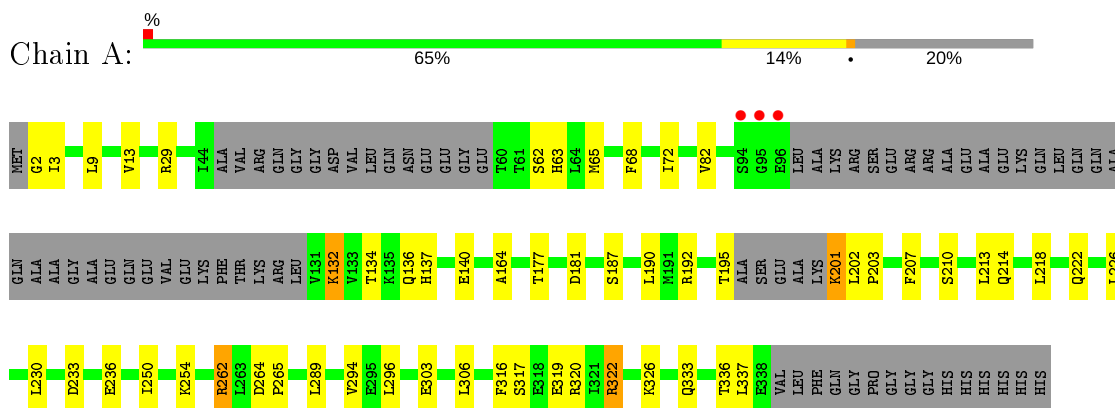
- Molecule 4 is water.

Mol	Chain	Residues	Atoms		ZeroOcc	AltConf
4	A	1	Total	O	0	0
			1	1		

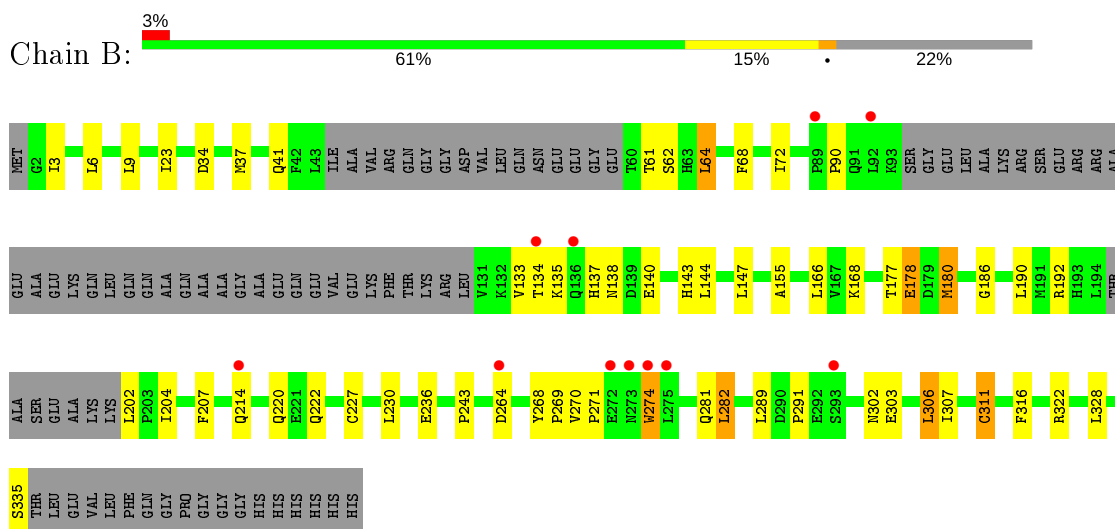
3 Residue-property plots [i](#)

These plots are drawn for all protein, RNA and DNA chains in the entry. The first graphic for a chain summarises the proportions of the various outlier classes displayed in the second graphic. The second graphic shows the sequence view annotated by issues in geometry and electron density. Residues are color-coded according to the number of geometric quality criteria for which they contain at least one outlier: green = 0, yellow = 1, orange = 2 and red = 3 or more. A red dot above a residue indicates a poor fit to the electron density ($RSRZ > 2$). Stretches of 2 or more consecutive residues without any outlier are shown as a green connector. Residues present in the sample, but not in the model, are shown in grey.

- Molecule 1: FLAP ENDONUCLEASE 1



- Molecule 1: FLAP ENDONUCLEASE 1



4 Data and refinement statistics

Property	Value	Source
Space group	P 1	Depositor
Cell constants a, b, c, α , β , γ	43.34Å 50.19Å 66.94Å 102.06° 94.01° 90.74°	Depositor
Resolution (Å)	65.29 – 2.84 43.91 – 2.84	Depositor EDS
% Data completeness (in resolution range)	92.3 (65.29-2.84) 92.3 (43.91-2.84)	Depositor EDS
R_{merge}	0.09	Depositor
R_{sym}	(Not available)	Depositor
$\langle I/\sigma(I) \rangle$ ¹	3.35 (at 2.86Å)	Xtrriage
Refinement program	REFMAC 5.6.0117	Depositor
R, R_{free}	0.234 , 0.300 0.235 , 0.302	Depositor DCC
R_{free} test set	576 reflections (4.80%)	wwPDB-VP
Wilson B-factor (Å ²)	51.2	Xtrriage
Anisotropy	0.053	Xtrriage
Bulk solvent k_{sol} (e/Å ³), B_{sol} (Å ²)	0.35 , 45.2	EDS
L-test for twinning ²	$\langle L \rangle = 0.50$, $\langle L^2 \rangle = 0.32$	Xtrriage
Estimated twinning fraction	No twinning to report.	Xtrriage
F_o, F_c correlation	0.90	EDS
Total number of atoms	4268	wwPDB-VP
Average B, all atoms (Å ²)	53.0	wwPDB-VP

Xtrriage's analysis on translational NCS is as follows: *The largest off-origin peak in the Patterson function is 7.56% of the height of the origin peak. No significant pseudotranslation is detected.*

¹Intensities estimated from amplitudes.

²Theoretical values of $\langle |L| \rangle$, $\langle L^2 \rangle$ for acentric reflections are 0.5, 0.333 respectively for untwinned datasets, and 0.375, 0.2 for perfectly twinned datasets.

5 Model quality [i](#)

5.1 Standard geometry [i](#)

Bond lengths and bond angles in the following residue types are not validated in this section: MG, R3Z

The Z score for a bond length (or angle) is the number of standard deviations the observed value is removed from the expected value. A bond length (or angle) with $|Z| > 5$ is considered an outlier worth inspection. RMSZ is the root-mean-square of all Z scores of the bond lengths (or angles).

Mol	Chain	Bond lengths		Bond angles	
		RMSZ	# $ Z > 5$	RMSZ	# $ Z > 5$
1	A	0.42	0/2224	0.53	0/3007
1	B	0.41	1/2078 (0.0%)	0.52	0/2825
All	All	0.41	1/4302 (0.0%)	0.53	0/5832

All (1) bond length outliers are listed below:

Mol	Chain	Res	Type	Atoms	Z	Observed(Å)	Ideal(Å)
1	B	274	TRP	CD2-CE2	5.01	1.47	1.41

There are no bond angle outliers.

There are no chirality outliers.

There are no planarity outliers.

5.2 Too-close contacts [i](#)

In the following table, the Non-H and H(model) columns list the number of non-hydrogen atoms and hydrogen atoms in the chain respectively. The H(added) column lists the number of hydrogen atoms added and optimized by MolProbity. The Clashes column lists the number of clashes within the asymmetric unit, whereas Symm-Clashes lists symmetry related clashes.

Mol	Chain	Non-H	H(model)	H(added)	Clashes	Symm-Clashes
1	A	2180	0	2122	31	0
1	B	2037	0	1909	28	0
2	A	2	0	0	0	0
2	B	2	0	0	0	0
3	A	23	0	0	0	0
3	B	23	0	0	0	0
4	A	1	0	0	0	0
All	All	4268	0	4031	58	0

The all-atom clashscore is defined as the number of clashes found per 1000 atoms (including hydrogen atoms). The all-atom clashscore for this structure is 7.

All (58) close contacts within the same asymmetric unit are listed below, sorted by their clash magnitude.

Atom-1	Atom-2	Interatomic distance (Å)	Clash overlap (Å)
1:A:68:PHE:O	1:A:72:ILE:HG12	1.91	0.69
1:A:2:GLY:N	1:A:181:ASP:OD2	2.27	0.68
1:B:168:LYS:HE3	1:B:186:GLY:O	1.95	0.66
1:A:303:GLU:OE2	1:A:322:ARG:HD2	1.99	0.61
1:A:134:THR:H	1:A:137:HIS:HD2	1.48	0.61
1:B:190:LEU:HB3	1:B:207:PHE:HB2	1.84	0.60
1:B:23:ILE:HD13	1:B:204:ILE:HD13	1.83	0.59
1:A:65:MET:HB3	1:A:316:PHE:CE2	2.39	0.58
1:B:68:PHE:O	1:B:72:ILE:HG12	2.05	0.57
1:A:317:SER:HB3	1:A:320:ARG:HB2	1.86	0.56
1:A:333:GLN:HG3	1:A:337:LEU:HD13	1.87	0.56
1:A:63:HIS:HE1	1:A:140:GLU:OE1	1.89	0.56
1:A:262[A]:ARG:HB2	1:A:262[A]:ARG:HH11	1.71	0.55
1:A:63:HIS:CE1	1:A:140:GLU:OE1	2.59	0.55
1:B:134:THR:H	1:B:137:HIS:CD2	2.25	0.54
1:A:192:ARG:HD2	1:A:207:PHE:CE1	2.43	0.54
1:A:82:VAL:HG21	1:A:296:LEU:HD22	1.90	0.54
1:A:262[A]:ARG:HH11	1:A:262[A]:ARG:CB	2.22	0.52
1:A:132:LYS:N	1:A:132:LYS:HD3	2.25	0.52
1:A:3:ILE:HG12	1:A:181:ASP:HB3	1.92	0.51
1:B:311:CYS:HB3	1:B:316:PHE:O	2.11	0.51
1:A:134:THR:H	1:A:137:HIS:CD2	2.30	0.49
1:A:65:MET:HB3	1:A:316:PHE:HE2	1.76	0.49
1:B:302:ASN:O	1:B:306:LEU:HB2	2.12	0.49
1:B:64:LEU:HD21	1:B:140:GLU:HB3	1.95	0.49
1:B:271:PRO:O	1:B:274:TRP:HB2	2.13	0.49
1:A:213:LEU:HB3	1:B:214:GLN:HE22	1.79	0.48
1:A:226:LEU:O	1:A:230:LEU:HG	2.13	0.48
1:B:303:GLU:O	1:B:307:ILE:HG12	2.13	0.48
1:A:164:ALA:CB	1:A:187:SER:HB2	2.45	0.47
1:B:143:HIS:CE1	1:B:147:LEU:HD11	2.50	0.46
1:B:6:LEU:HD23	1:B:180:MET:HB3	1.98	0.46
1:B:134:THR:H	1:B:137:HIS:HD2	1.62	0.46
1:B:155:ALA:HA	1:B:289:LEU:HD23	1.97	0.45
1:B:166:LEU:HD23	1:B:291:PRO:HB3	1.98	0.45
1:B:178:GLU:HA	1:B:192:ARG:HG2	1.99	0.45
1:B:133:VAL:HG12	1:B:138:ASN:HD21	1.82	0.44

Continued on next page...

Continued from previous page...

Atom-1	Atom-2	Interatomic distance (Å)	Clash overlap (Å)
1:B:90:PRO:HG3	1:B:282:LEU:HD21	1.99	0.44
1:B:236:GLU:HG3	1:B:271:PRO:HG2	2.01	0.43
1:A:218:LEU:HD22	1:A:250:ILE:HG22	2.01	0.43
1:A:201:LYS:HD3	1:A:202:LEU:HB2	2.01	0.43
1:A:289:LEU:HD13	1:A:294:VAL:HG21	2.01	0.43
1:B:72:ILE:HD13	1:B:328:LEU:HB2	2.01	0.42
1:B:3:ILE:HD12	1:B:227:CYS:HB3	2.02	0.42
1:A:202:LEU:HD12	1:A:203:PRO:HD2	2.02	0.41
1:A:132:LYS:HD3	1:A:132:LYS:H	1.85	0.41
1:B:268:TYR:HA	1:B:269:PRO:HD3	1.88	0.41
1:A:222:GLN:HG2	1:A:254:LYS:O	2.21	0.41
1:B:64:LEU:HB3	1:B:144:LEU:HD22	2.02	0.41
1:A:210:SER:O	1:A:214:GLN:HB2	2.21	0.41
1:A:262[B]:ARG:HD2	1:A:262[B]:ARG:H	1.85	0.41
1:B:37:MET:O	1:B:41:GLN:HG2	2.21	0.41
1:A:177:THR:CG2	1:A:190:LEU:HD11	2.51	0.41
1:B:303:GLU:OE2	1:B:322:ARG:NE	2.53	0.41
1:A:202:LEU:HA	1:A:203:PRO:HD3	1.91	0.41
1:A:264:ASP:HA	1:A:265:PRO:HD3	1.95	0.41
1:B:34:ASP:HB2	1:B:177:THR:HB	2.03	0.40
1:B:230:LEU:CD2	1:B:243:PRO:HA	2.52	0.40

There are no symmetry-related clashes.

5.3 Torsion angles [i](#)

5.3.1 Protein backbone [i](#)

In the following table, the Percentiles column shows the percent Ramachandran outliers of the chain as a percentile score with respect to all X-ray entries followed by that with respect to entries of similar resolution.

The Analysed column shows the number of residues for which the backbone conformation was analysed, and the total number of residues.

Mol	Chain	Analysed	Favoured	Allowed	Outliers	Percentiles	
1	A	276/353 (78%)	257 (93%)	19 (7%)	0	100	100
1	B	266/353 (75%)	255 (96%)	11 (4%)	0	100	100
All	All	542/706 (77%)	512 (94%)	30 (6%)	0	100	100

There are no Ramachandran outliers to report.

5.3.2 Protein sidechains [i](#)

In the following table, the Percentiles column shows the percent sidechain outliers of the chain as a percentile score with respect to all X-ray entries followed by that with respect to entries of similar resolution.

The Analysed column shows the number of residues for which the sidechain conformation was analysed, and the total number of residues.

Mol	Chain	Analysed	Rotameric	Outliers	Percentiles	
1	A	230/301 (76%)	213 (93%)	17 (7%)	13	29
1	B	207/301 (69%)	190 (92%)	17 (8%)	11	24
All	All	437/602 (73%)	403 (92%)	34 (8%)	13	26

All (34) residues with a non-rotameric sidechain are listed below:

Mol	Chain	Res	Type
1	A	9	LEU
1	A	13	VAL
1	A	29	ARG
1	A	62	SER
1	A	132	LYS
1	A	136	GLN
1	A	195	THR
1	A	201	LYS
1	A	233	ASP
1	A	236	GLU
1	A	262[A]	ARG
1	A	262[B]	ARG
1	A	306	LEU
1	A	319	GLU
1	A	322	ARG
1	A	326	LYS
1	A	336	THR
1	B	9	LEU
1	B	61	THR
1	B	62	SER
1	B	64	LEU
1	B	135	LYS
1	B	178	GLU
1	B	180	MET
1	B	202	LEU

Continued on next page...

Continued from previous page...

Mol	Chain	Res	Type
1	B	220	GLN
1	B	222	GLN
1	B	264	ASP
1	B	270	VAL
1	B	281	GLN
1	B	282	LEU
1	B	306	LEU
1	B	311	CYS
1	B	335	SER

Some sidechains can be flipped to improve hydrogen bonding and reduce clashes. All (10) such sidechains are listed below:

Mol	Chain	Res	Type
1	A	63	HIS
1	A	137	HIS
1	A	143	HIS
1	A	273	ASN
1	A	281	GLN
1	A	333	GLN
1	B	137	HIS
1	B	143	HIS
1	B	214	GLN
1	B	281	GLN

5.3.3 RNA [i](#)

There are no RNA molecules in this entry.

5.4 Non-standard residues in protein, DNA, RNA chains [i](#)

There are no non-standard protein/DNA/RNA residues in this entry.

5.5 Carbohydrates [i](#)

There are no carbohydrates in this entry.

5.6 Ligand geometry [i](#)

Of 6 ligands modelled in this entry, 4 are monoatomic - leaving 2 for Mogul analysis.

In the following table, the Counts columns list the number of bonds (or angles) for which Mogul statistics could be retrieved, the number of bonds (or angles) that are observed in the model and the number of bonds (or angles) that are defined in the Chemical Component Dictionary. The Link column lists molecule types, if any, to which the group is linked. The Z score for a bond length (or angle) is the number of standard deviations the observed value is removed from the expected value. A bond length (or angle) with $|Z| > 2$ is considered an outlier worth inspection. RMSZ is the root-mean-square of all Z scores of the bond lengths (or angles).

Mol	Type	Chain	Res	Link	Bond lengths			Bond angles		
					Counts	RMSZ	# Z > 2	Counts	RMSZ	# Z > 2
3	R3Z	B	1338	2	20,26,26	1.08	2 (10%)	15,38,38	0.86	0
3	R3Z	A	1341	2	20,26,26	1.14	2 (10%)	15,38,38	1.19	1 (6%)

In the following table, the Chirals column lists the number of chiral outliers, the number of chiral centers analysed, the number of these observed in the model and the number defined in the Chemical Component Dictionary. Similar counts are reported in the Torsion and Rings columns. '-' means no outliers of that kind were identified.

Mol	Type	Chain	Res	Link	Chirals	Torsions	Rings
3	R3Z	B	1338	2	-	0/4/13/13	0/4/4/4
3	R3Z	A	1341	2	-	0/4/13/13	0/4/4/4

All (4) bond length outliers are listed below:

Mol	Chain	Res	Type	Atoms	Z	Observed(Å)	Ideal(Å)
3	A	1341	R3Z	O23-N20	3.38	1.42	1.38
3	B	1338	R3Z	O23-N20	3.11	1.42	1.38
3	A	1341	R3Z	C18-N20	-2.85	1.35	1.40
3	B	1338	R3Z	C18-N20	-2.81	1.35	1.40

All (1) bond angle outliers are listed below:

Mol	Chain	Res	Type	Atoms	Z	Observed(°)	Ideal(°)
3	A	1341	R3Z	O7-C5-C4	-2.28	119.99	122.03

There are no chirality outliers.

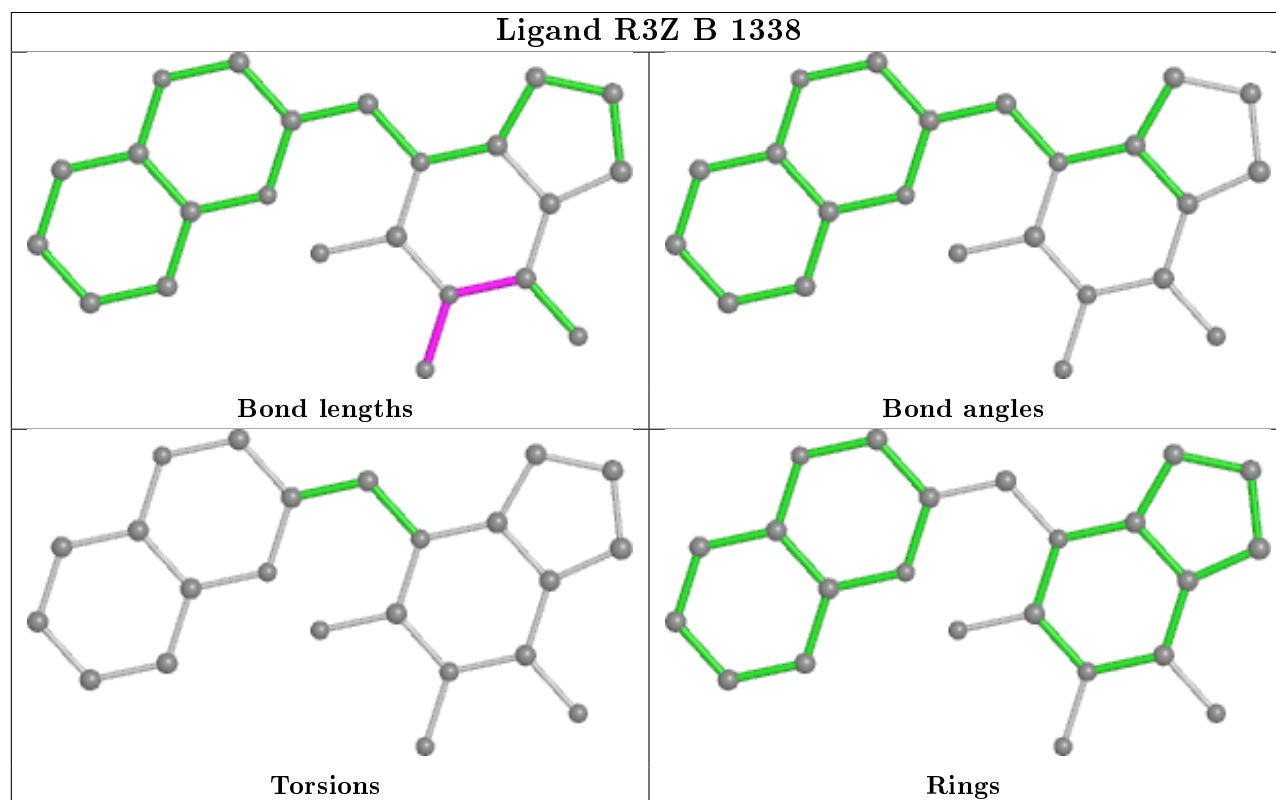
There are no torsion outliers.

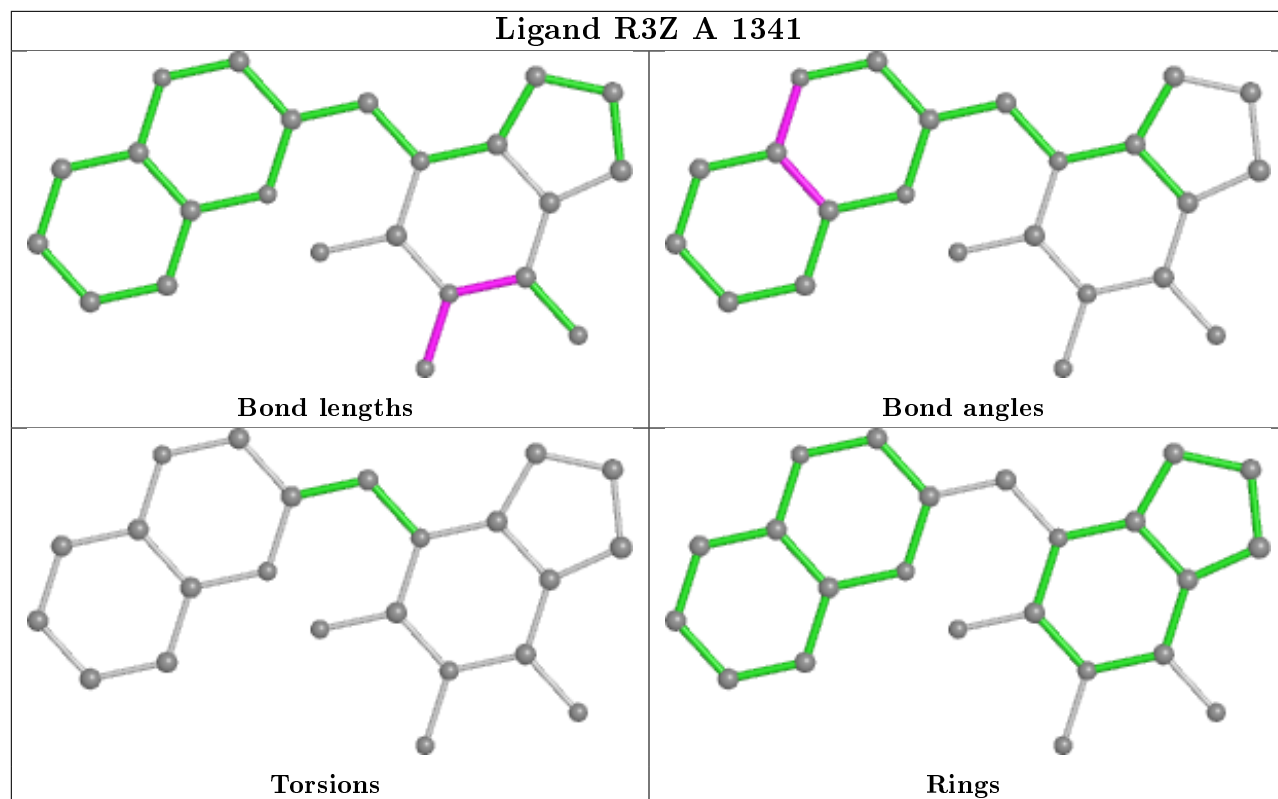
There are no ring outliers.

No monomer is involved in short contacts.

The following is a two-dimensional graphical depiction of Mogul quality analysis of bond lengths, bond angles, torsion angles, and ring geometry for all instances of the Ligand of Interest. In addition, ligands with molecular weight > 250 and outliers as shown on the validation Tables will

also be included. For torsion angles, if less than 5% of the Mogul distribution of torsion angles is within 10 degrees of the torsion angle in question, then that torsion angle is considered an outlier. Any bond that is central to one or more torsion angles identified as an outlier by Mogul will be highlighted in the graph. For rings, the root-mean-square deviation (RMSD) between the ring in question and similar rings identified by Mogul is calculated over all ring torsion angles. If the average RMSD is greater than 60 degrees and the minimal RMSD between the ring in question and any Mogul-identified rings is also greater than 60 degrees, then that ring is considered an outlier. The outliers are highlighted in purple. The color gray indicates Mogul did not find sufficient equivalents in the CSD to analyse the geometry.





5.7 Other polymers [i](#)

There are no such residues in this entry.

5.8 Polymer linkage issues [i](#)

There are no chain breaks in this entry.

6 Fit of model and data [i](#)

6.1 Protein, DNA and RNA chains [i](#)

In the following table, the column labelled ‘#RSRZ> 2’ contains the number (and percentage) of RSRZ outliers, followed by percent RSRZ outliers for the chain as percentile scores relative to all X-ray entries and entries of similar resolution. The OWAB column contains the minimum, median, 95th percentile and maximum values of the occupancy-weighted average B-factor per residue. The column labelled ‘Q< 0.9’ lists the number of (and percentage) of residues with an average occupancy less than 0.9.

Mol	Chain	Analysed	<RSRZ>	#RSRZ>2	OWAB(Å ²)	Q<0.9
1	A	283/353 (80%)	-0.08	3 (1%) 80 78	30, 44, 62, 99	0
1	B	274/353 (77%)	0.25	11 (4%) 38 30	38, 59, 89, 114	0
All	All	557/706 (78%)	0.09	14 (2%) 57 52	30, 50, 86, 114	0

All (14) RSRZ outliers are listed below:

Mol	Chain	Res	Type	RSRZ
1	A	96	GLU	6.1
1	B	272	GLU	5.1
1	B	273	ASN	4.7
1	B	275	LEU	3.7
1	A	94	SER	3.4
1	B	214	GLN	2.9
1	B	89	PRO	2.8
1	A	95	GLY	2.7
1	B	136	GLN	2.7
1	B	293	SER	2.5
1	B	274	TRP	2.2
1	B	134	THR	2.2
1	B	264	ASP	2.1
1	B	92	LEU	2.0

6.2 Non-standard residues in protein, DNA, RNA chains [i](#)

There are no non-standard protein/DNA/RNA residues in this entry.

6.3 Carbohydrates [i](#)

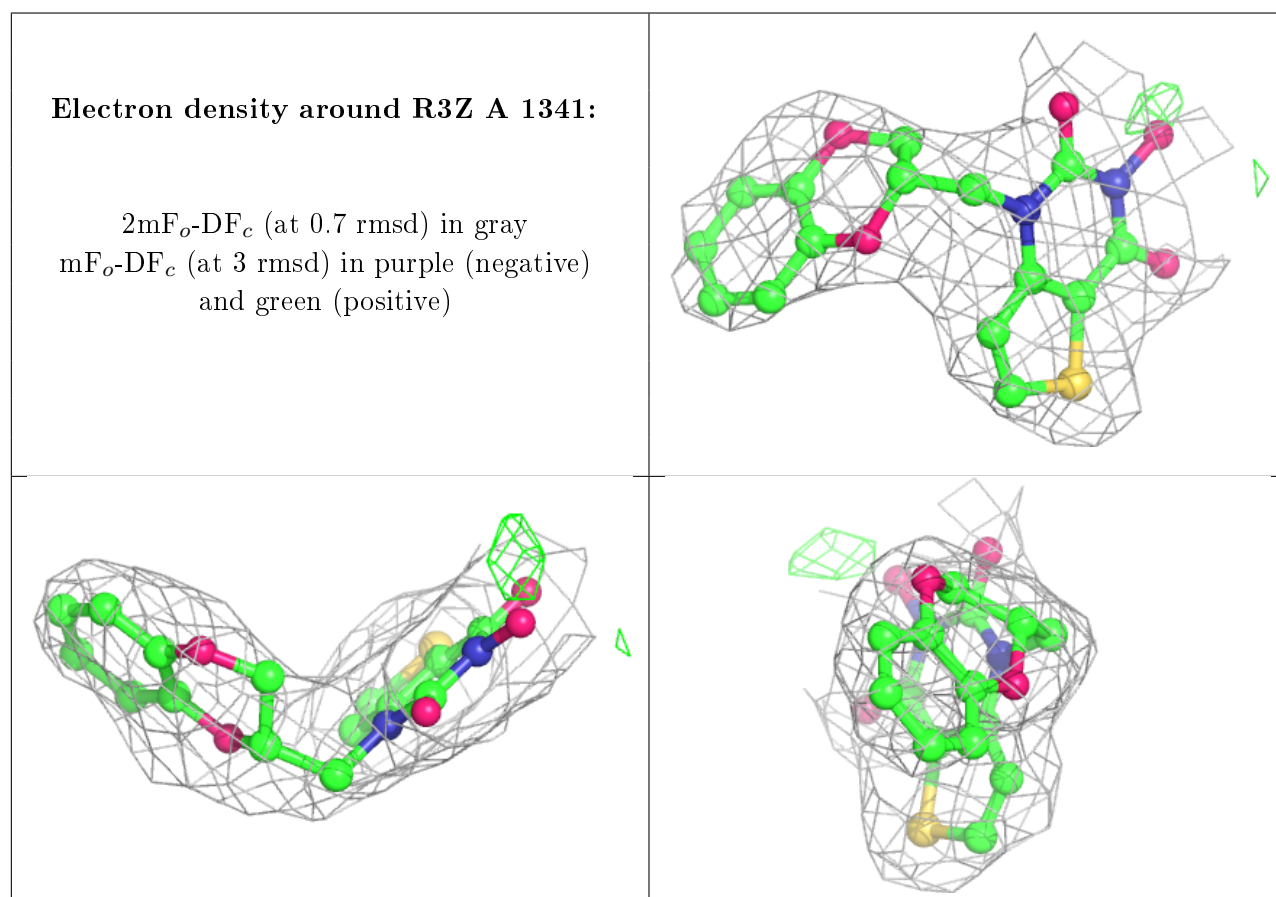
There are no carbohydrates in this entry.

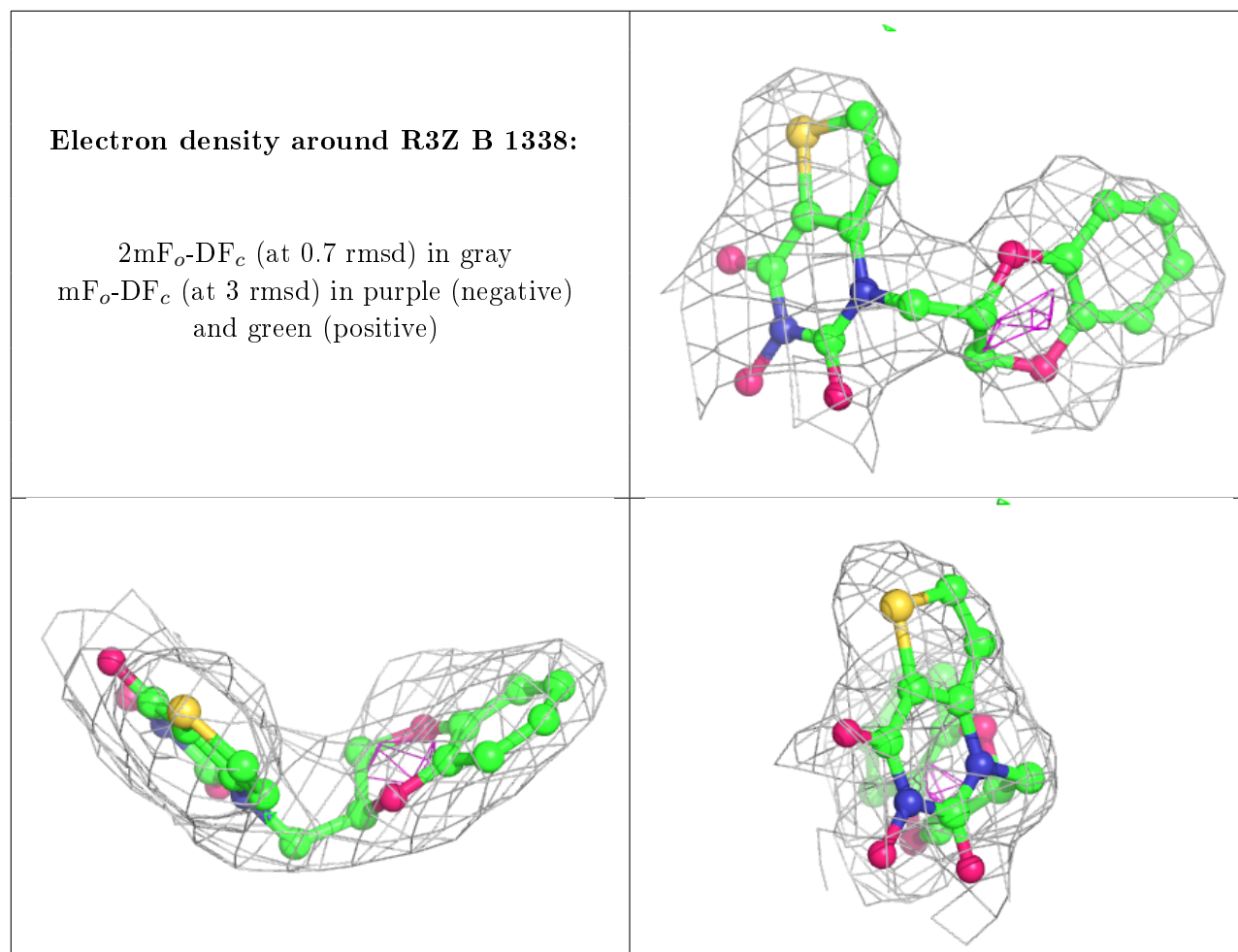
6.4 Ligands [i](#)

In the following table, the Atoms column lists the number of modelled atoms in the group and the number defined in the chemical component dictionary. The B-factors column lists the minimum, median, 95th percentile and maximum values of B factors of atoms in the group. The column labelled 'Q<0.9' lists the number of atoms with occupancy less than 0.9.

Mol	Type	Chain	Res	Atoms	RSCC	RSR	B-factors(Å ²)	Q<0.9
3	R3Z	A	1341	23/23	0.92	0.16	41,46,47,47	0
3	R3Z	B	1338	23/23	0.94	0.20	36,39,41,42	0
2	MG	A	1339	1/1	0.94	0.21	45,45,45,45	0
2	MG	A	1340	1/1	0.95	0.09	23,23,23,23	0
2	MG	B	1336	1/1	0.95	0.12	30,30,30,30	0
2	MG	B	1337	1/1	0.98	0.06	22,22,22,22	0

The following is a graphical depiction of the model fit to experimental electron density of all instances of the Ligand of Interest. In addition, ligands with molecular weight > 250 and outliers as shown on the geometry validation Tables will also be included. Each fit is shown from different orientation to approximate a three-dimensional view.





6.5 Other polymers [i](#)

There are no such residues in this entry.