



# Full wwPDB X-ray Structure Validation Report ⓘ

Jun 23, 2024 – 01:13 AM EDT

PDB ID : 5FWV  
Title : Wnt modulator Kremen crystal form III at 3.2A  
Authors : Zebisch, M.; Jackson, V.A.; Jones, E.Y.  
Deposited on : 2016-02-21  
Resolution : 3.20 Å(reported)

This is a Full wwPDB X-ray Structure Validation Report for a publicly released PDB entry.

We welcome your comments at [validation@mail.wwpdb.org](mailto:validation@mail.wwpdb.org)

A user guide is available at

<https://www.wwpdb.org/validation/2017/XrayValidationReportHelp>

with specific help available everywhere you see the ⓘ symbol.

The types of validation reports are described at

<http://www.wwpdb.org/validation/2017/FAQs#types>.

---

The following versions of software and data (see [references ⓘ](#)) were used in the production of this report:

MolProbity : 4.02b-467  
Mogul : 1.8.5 (274361), CSD as541be (2020)  
Xtrriage (Phenix) : 1.13  
EDS : 2.37.1  
Percentile statistics : 20191225.v01 (using entries in the PDB archive December 25th 2019)  
Refmac : 5.8.0158  
CCP4 : 7.0.044 (Gargrove)  
Ideal geometry (proteins) : Engh & Huber (2001)  
Ideal geometry (DNA, RNA) : Parkinson et al. (1996)  
Validation Pipeline (wwPDB-VP) : 2.37.1

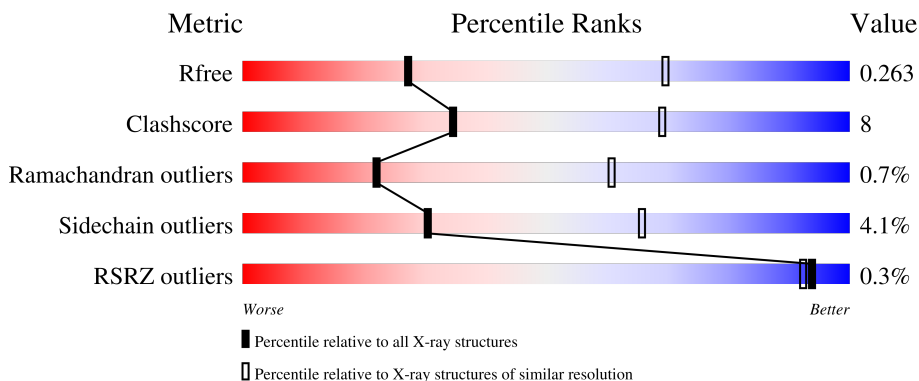
# 1 Overall quality at a glance

The following experimental techniques were used to determine the structure:

*X-RAY DIFFRACTION*


The reported resolution of this entry is 3.20 Å.

Percentile scores (ranging between 0-100) for global validation metrics of the entry are shown in the following graphic. The table shows the number of entries on which the scores are based.



Metric	Whole archive (#Entries)	Similar resolution (#Entries, resolution range(Å))
$R_{free}$	130704	1133 (3.20-3.20)
Clashscore	141614	1253 (3.20-3.20)
Ramachandran outliers	138981	1234 (3.20-3.20)
Sidechain outliers	138945	1233 (3.20-3.20)
RSRZ outliers	127900	1095 (3.20-3.20)

The table below summarises the geometric issues observed across the polymeric chains and their fit to the electron density. The red, orange, yellow and green segments of the lower bar indicate the fraction of residues that contain outliers for  $\geq 3$ , 2, 1 and 0 types of geometric quality criteria respectively. A grey segment represents the fraction of residues that are not modelled. The numeric value for each fraction is indicated below the corresponding segment, with a dot representing fractions  $\leq 5\%$ . The upper red bar (where present) indicates the fraction of residues that have poor fit to the electron density. The numeric value is given above the bar.

Mol	Chain	Length	Quality of chain
1	A	406	 60% 12% • 28%

## 2 Entry composition [i](#)

There are 4 unique types of molecules in this entry. The entry contains 2340 atoms, of which 0 are hydrogens and 0 are deuteriums.

In the tables below, the ZeroOcc column contains the number of atoms modelled with zero occupancy, the AltConf column contains the number of residues with at least one atom in alternate conformation and the Trace column contains the number of residues modelled with at most 2 atoms.

- Molecule 1 is a protein called KREMEN PROTEIN 1.

Mol	Chain	Residues	Atoms					ZeroOcc	AltConf	Trace
			Total	C	N	O	S			
1	A	294	2305	1463	392	430	20	0	0	0

There are 61 discrepancies between the modelled and reference sequences:

Chain	Residue	Modelled	Actual	Comment	Reference
A	-10	MET	-	initiating methionine	UNP Q96MU8
A	-9	GLY	-	expression tag	UNP Q96MU8
A	-8	ILE	-	expression tag	UNP Q96MU8
A	-7	LEU	-	expression tag	UNP Q96MU8
A	-6	PRO	-	expression tag	UNP Q96MU8
A	-5	SER	-	expression tag	UNP Q96MU8
A	-4	PRO	-	expression tag	UNP Q96MU8
A	-3	GLY	-	expression tag	UNP Q96MU8
A	-2	MET	-	expression tag	UNP Q96MU8
A	-1	PRO	-	expression tag	UNP Q96MU8
A	0	ALA	-	expression tag	UNP Q96MU8
A	1	LEU	-	expression tag	UNP Q96MU8
A	2	LEU	-	expression tag	UNP Q96MU8
A	3	SER	-	expression tag	UNP Q96MU8
A	4	LEU	-	expression tag	UNP Q96MU8
A	5	VAL	-	expression tag	UNP Q96MU8
A	6	SER	-	expression tag	UNP Q96MU8
A	7	LEU	-	expression tag	UNP Q96MU8
A	8	LEU	-	expression tag	UNP Q96MU8
A	9	SER	-	expression tag	UNP Q96MU8
A	10	VAL	-	expression tag	UNP Q96MU8
A	11	LEU	-	expression tag	UNP Q96MU8
A	12	LEU	-	expression tag	UNP Q96MU8
A	13	MET	-	expression tag	UNP Q96MU8
A	14	GLY	-	expression tag	UNP Q96MU8
A	15	CYS	-	expression tag	UNP Q96MU8
A	16	VAL	-	expression tag	UNP Q96MU8

*Continued on next page...*

Continued from previous page...

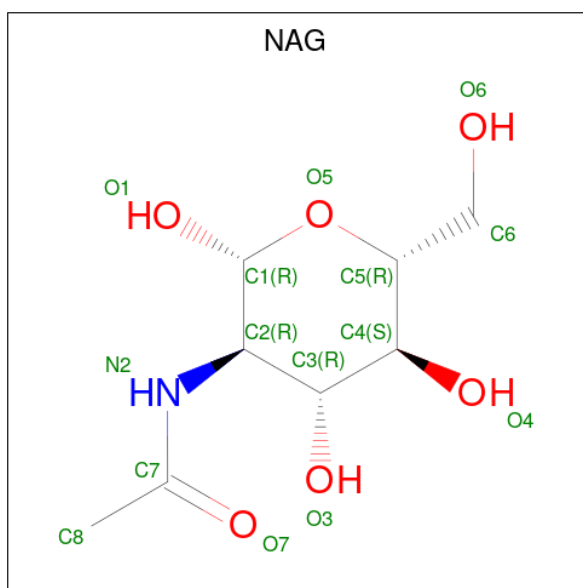
Chain	Residue	Modelled	Actual	Comment	Reference
A	17	ALA	-	expression tag	UNP Q96MU8
A	18	GLU	-	expression tag	UNP Q96MU8
A	19	THR	-	expression tag	UNP Q96MU8
A	20	GLY	-	expression tag	UNP Q96MU8
A	21	ALA	-	expression tag	UNP Q96MU8
A	22	PRO	-	expression tag	UNP Q96MU8
A	23	SER	-	expression tag	UNP Q96MU8
A	24	PRO	-	expression tag	UNP Q96MU8
A	25	GLY	-	expression tag	UNP Q96MU8
A	26	LEU	-	expression tag	UNP Q96MU8
A	27	GLY	-	expression tag	UNP Q96MU8
A	28	PRO	-	expression tag	UNP Q96MU8
A	325	GLY	-	insertion	UNP Q96MU8
A	326	SER	-	insertion	UNP Q96MU8
A	327	GLU	-	insertion	UNP Q96MU8
A	328	ASN	-	insertion	UNP Q96MU8
A	329	LEU	-	insertion	UNP Q96MU8
A	330	TYR	-	insertion	UNP Q96MU8
A	331	PHE	-	insertion	UNP Q96MU8
A	332	GLN	-	insertion	UNP Q96MU8
A	333	GLY	-	insertion	UNP Q96MU8
A	334	GLY	-	insertion	UNP Q96MU8
A	335	SER	-	insertion	UNP Q96MU8
A	385	THR	-	expression tag	UNP Q96MU8
A	386	HIS	-	expression tag	UNP Q96MU8
A	387	HIS	-	expression tag	UNP Q96MU8
A	388	HIS	-	expression tag	UNP Q96MU8
A	389	HIS	-	expression tag	UNP Q96MU8
A	390	HIS	-	expression tag	UNP Q96MU8
A	391	HIS	-	expression tag	UNP Q96MU8
A	392	HIS	-	expression tag	UNP Q96MU8
A	393	HIS	-	expression tag	UNP Q96MU8
A	394	HIS	-	expression tag	UNP Q96MU8
A	395	HIS	-	expression tag	UNP Q96MU8

- Molecule 2 is CHLORIDE ION (three-letter code: CL) (formula: Cl).

Mol	Chain	Residues	Atoms	ZeroOcc	AltConf
2	A	5	Total Cl 5 5	0	0

- Molecule 3 is 2-acetamido-2-deoxy-beta-D-glucopyranose (three-letter code: NAG) (formula:

C<sub>8</sub>H<sub>15</sub>NO<sub>6</sub>).



Mol	Chain	Residues	Atoms				ZeroOcc	AltConf
3	A	1	Total	C	N	O	0	0
			14	8	1	5		
3	A	1	Total	C	N	O	0	0
			14	8	1	5		

- Molecule 4 is water.

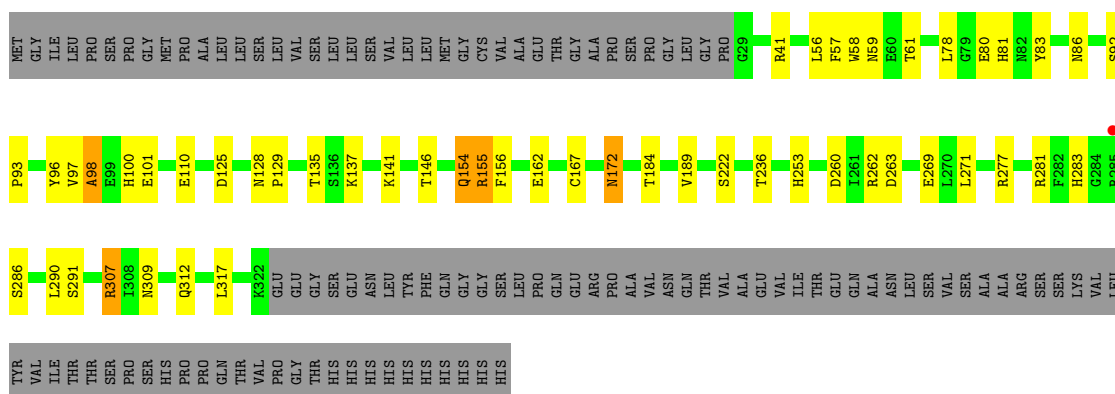
Mol	Chain	Residues	Atoms		ZeroOcc	AltConf
4	A	2	Total	O	0	0
			2	2		

### 3 Residue-property plots [i](#)

These plots are drawn for all protein, RNA, DNA and oligosaccharide chains in the entry. The first graphic for a chain summarises the proportions of the various outlier classes displayed in the second graphic. The second graphic shows the sequence view annotated by issues in geometry and electron density. Residues are color-coded according to the number of geometric quality criteria for which they contain at least one outlier: green = 0, yellow = 1, orange = 2 and red = 3 or more. A red dot above a residue indicates a poor fit to the electron density ( $RSRZ > 2$ ). Stretches of 2 or more consecutive residues without any outlier are shown as a green connector. Residues present in the sample, but not in the model, are shown in grey.

- Molecule 1: KREMEN PROTEIN 1

Chain A:  60% 12% 28%



## 4 Data and refinement statistics

Property	Value	Source
Space group	P 41 21 2	Depositor
Cell constants a, b, c, $\alpha$ , $\beta$ , $\gamma$	67.84Å 67.84Å 198.19Å 90.00° 90.00° 90.00°	Depositor
Resolution (Å)	64.19 – 3.20 55.98 – 3.20	Depositor EDS
% Data completeness (in resolution range)	98.6 (64.19-3.20) 98.6 (55.98-3.20)	Depositor EDS
$R_{merge}$	0.30	Depositor
$R_{sym}$	(Not available)	Depositor
$\langle I/\sigma(I) \rangle$ <sup>1</sup>	1.49 (at 3.19Å)	Xtrriage
Refinement program	REFMAC 5.8.0135	Depositor
R, $R_{free}$	0.195 , 0.265 0.199 , 0.263	Depositor DCC
$R_{free}$ test set	376 reflections (4.64%)	wwPDB-VP
Wilson B-factor (Å <sup>2</sup> )	69.2	Xtrriage
Anisotropy	0.236	Xtrriage
Bulk solvent $k_{sol}$ (e/Å <sup>3</sup> ), $B_{sol}$ (Å <sup>2</sup> )	0.30 , 58.2	EDS
L-test for twinning <sup>2</sup>	$\langle  L  \rangle = 0.49$ , $\langle L^2 \rangle = 0.32$	Xtrriage
Estimated twinning fraction	No twinning to report.	Xtrriage
$F_o, F_c$ correlation	0.93	EDS
Total number of atoms	2340	wwPDB-VP
Average B, all atoms (Å <sup>2</sup> )	76.0	wwPDB-VP

Xtrriage's analysis on translational NCS is as follows: *The largest off-origin peak in the Patterson function is 4.33% of the height of the origin peak. No significant pseudotranslation is detected.*

<sup>1</sup>Intensities estimated from amplitudes.

<sup>2</sup>Theoretical values of  $\langle |L| \rangle$ ,  $\langle L^2 \rangle$  for acentric reflections are 0.5, 0.333 respectively for untwinned datasets, and 0.375, 0.2 for perfectly twinned datasets.

## 5 Model quality [i](#)

### 5.1 Standard geometry [i](#)

Bond lengths and bond angles in the following residue types are not validated in this section: CL, NAG

The Z score for a bond length (or angle) is the number of standard deviations the observed value is removed from the expected value. A bond length (or angle) with  $|Z| > 5$  is considered an outlier worth inspection. RMSZ is the root-mean-square of all Z scores of the bond lengths (or angles).

Mol	Chain	Bond lengths		Bond angles	
		RMSZ	# Z  >5	RMSZ	# Z  >5
1	A	0.83	0/2381	0.93	2/3240 (0.1%)

There are no bond length outliers.

All (2) bond angle outliers are listed below:

Mol	Chain	Res	Type	Atoms	Z	Observed(°)	Ideal(°)
1	A	41	ARG	NE-CZ-NH1	5.09	122.85	120.30
1	A	155	ARG	NE-CZ-NH1	5.07	122.83	120.30

There are no chirality outliers.

There are no planarity outliers.

### 5.2 Too-close contacts [i](#)

In the following table, the Non-H and H(model) columns list the number of non-hydrogen atoms and hydrogen atoms in the chain respectively. The H(added) column lists the number of hydrogen atoms added and optimized by MolProbity. The Clashes column lists the number of clashes within the asymmetric unit, whereas Symm-Clashes lists symmetry-related clashes.

Mol	Chain	Non-H	H(model)	H(added)	Clashes	Symm-Clashes
1	A	2305	0	2111	37	0
2	A	5	0	0	0	0
3	A	28	0	26	0	0
4	A	2	0	0	1	0
All	All	2340	0	2137	37	0

The all-atom clashscore is defined as the number of clashes found per 1000 atoms (including hydrogen atoms). The all-atom clashscore for this structure is 8.



All (37) close contacts within the same asymmetric unit are listed below, sorted by their clash magnitude.

Atom-1	Atom-2	Interatomic distance (Å)	Clash overlap (Å)
1:A:263:ASP:OD2	1:A:309:ASN:HB2	1.73	0.87
1:A:172:ASN:HD22	1:A:172:ASN:H	1.19	0.86
1:A:135:THR:HG21	1:A:154:GLN:HE21	1.39	0.85
1:A:172:ASN:HD22	1:A:172:ASN:N	1.80	0.78
1:A:253:HIS:NE2	1:A:291:SER:OG	2.18	0.76
1:A:56:LEU:HG	1:A:96:TYR:O	1.92	0.69
1:A:263:ASP:OD1	1:A:309:ASN:ND2	2.28	0.66
1:A:269:GLU:OE2	1:A:281:ARG:NH1	2.28	0.66
1:A:59:ASN:ND2	1:A:80:GLU:HG3	2.14	0.62
1:A:172:ASN:H	1:A:172:ASN:ND2	1.96	0.62
1:A:57:PHE:O	1:A:61:THR:HG23	1.98	0.62
1:A:100:HIS:O	1:A:101:GLU:HB3	2.03	0.58
1:A:135:THR:HG22	1:A:156:PHE:HE2	1.68	0.58
1:A:172:ASN:N	1:A:172:ASN:ND2	2.50	0.58
1:A:263:ASP:OD2	1:A:309:ASN:CB	2.50	0.57
1:A:135:THR:HG21	1:A:154:GLN:NE2	2.16	0.56
1:A:260:ASP:HB3	1:A:312:GLN:HB3	1.89	0.55
1:A:135:THR:HG22	1:A:156:PHE:CE2	2.42	0.55
1:A:146:THR:HG21	4:A:2002:HOH:O	2.09	0.53
1:A:81:HIS:HD2	1:A:83:TYR:H	1.55	0.53
1:A:125:ASP:OD2	1:A:162:GLU:OE2	2.28	0.52
1:A:97:VAL:O	1:A:98:ALA:HB3	2.12	0.49
1:A:135:THR:HG21	1:A:154:GLN:HG2	1.94	0.49
1:A:58:TRP:CD2	1:A:78:LEU:HD22	2.49	0.48
1:A:253:HIS:CE1	1:A:291:SER:HG	2.26	0.46
1:A:236:THR:HB	1:A:307:ARG:HA	1.97	0.45
1:A:283:HIS:N	1:A:286:SER:OG	2.39	0.44
1:A:86:ASN:HB2	1:A:93:PRO:HA	1.99	0.44
1:A:137:LYS:HG2	1:A:167:CYS:HB3	1.99	0.44
1:A:236:THR:HG22	1:A:307:ARG:O	2.18	0.44
1:A:110:GLU:HG2	1:A:184:THR:HG23	2.00	0.43
1:A:128:ASN:HA	1:A:129:PRO:HA	1.92	0.41
1:A:135:THR:CG2	1:A:154:GLN:HG2	2.50	0.41
1:A:100:HIS:O	1:A:101:GLU:CB	2.68	0.41
1:A:260:ASP:CB	1:A:312:GLN:HB3	2.49	0.41
1:A:97:VAL:O	1:A:98:ALA:CB	2.69	0.41
1:A:271:LEU:HA	1:A:277:ARG:O	2.20	0.40

There are no symmetry-related clashes.

## 5.3 Torsion angles [i](#)

### 5.3.1 Protein backbone [i](#)

In the following table, the Percentiles column shows the percent Ramachandran outliers of the chain as a percentile score with respect to all X-ray entries followed by that with respect to entries of similar resolution.

The Analysed column shows the number of residues for which the backbone conformation was analysed, and the total number of residues.

Mol	Chain	Analysed	Favoured	Allowed	Outliers	Percentiles
1	A	292/406 (72%)	273 (94%)	17 (6%)	2 (1%)	22 61

All (2) Ramachandran outliers are listed below:

Mol	Chain	Res	Type
1	A	98	ALA
1	A	290	LEU

### 5.3.2 Protein sidechains [i](#)

In the following table, the Percentiles column shows the percent sidechain outliers of the chain as a percentile score with respect to all X-ray entries followed by that with respect to entries of similar resolution.

The Analysed column shows the number of residues for which the sidechain conformation was analysed, and the total number of residues.

Mol	Chain	Analysed	Rotameric	Outliers	Percentiles
1	A	245/339 (72%)	235 (96%)	10 (4%)	30 66

All (10) residues with a non-rotameric sidechain are listed below:

Mol	Chain	Res	Type
1	A	92	SER
1	A	141	LYS
1	A	154	GLN
1	A	155	ARG
1	A	172	ASN
1	A	189	VAL
1	A	222	SER
1	A	262	ARG
1	A	307	ARG

*Continued on next page...*

*Continued from previous page...*

Mol	Chain	Res	Type
1	A	317	LEU

Sometimes sidechains can be flipped to improve hydrogen bonding and reduce clashes. All (5) such sidechains are listed below:

Mol	Chain	Res	Type
1	A	81	HIS
1	A	115	GLN
1	A	154	GLN
1	A	172	ASN
1	A	196	GLN

### 5.3.3 RNA [i](#)

There are no RNA molecules in this entry.

## 5.4 Non-standard residues in protein, DNA, RNA chains [i](#)

There are no non-standard protein/DNA/RNA residues in this entry.

## 5.5 Carbohydrates [i](#)

There are no monosaccharides in this entry.

## 5.6 Ligand geometry [i](#)

Of 7 ligands modelled in this entry, 5 are monoatomic - leaving 2 for Mogul analysis.

In the following table, the Counts columns list the number of bonds (or angles) for which Mogul statistics could be retrieved, the number of bonds (or angles) that are observed in the model and the number of bonds (or angles) that are defined in the Chemical Component Dictionary. The Link column lists molecule types, if any, to which the group is linked. The Z score for a bond length (or angle) is the number of standard deviations the observed value is removed from the expected value. A bond length (or angle) with  $|Z| > 2$  is considered an outlier worth inspection. RMSZ is the root-mean-square of all Z scores of the bond lengths (or angles).

Mol	Type	Chain	Res	Link	Bond lengths			Bond angles		
					Counts	RMSZ	# Z  > 2	Counts	RMSZ	# Z  > 2
3	NAG	A	1327	1	14,14,15	0.69	0	17,19,21	2.50	5 (29%)
3	NAG	A	1328	1	14,14,15	0.43	0	17,19,21	1.23	2 (11%)

In the following table, the Chirals column lists the number of chiral outliers, the number of chiral centers analysed, the number of these observed in the model and the number defined in the Chemical Component Dictionary. Similar counts are reported in the Torsion and Rings columns. '-' means no outliers of that kind were identified.

Mol	Type	Chain	Res	Link	Chirals	Torsions	Rings
3	NAG	A	1327	1	-	0/6/23/26	0/1/1/1
3	NAG	A	1328	1	-	0/6/23/26	0/1/1/1

There are no bond length outliers.

All (7) bond angle outliers are listed below:

Mol	Chain	Res	Type	Atoms	Z	Observed(°)	Ideal(°)
3	A	1327	NAG	C1-O5-C5	7.35	122.15	112.19
3	A	1327	NAG	O5-C5-C6	4.34	114.01	107.20
3	A	1327	NAG	C3-C4-C5	3.52	116.51	110.24
3	A	1328	NAG	O5-C5-C6	2.74	111.51	107.20
3	A	1327	NAG	C6-C5-C4	-2.73	106.61	113.00
3	A	1328	NAG	C1-O5-C5	-2.54	108.75	112.19
3	A	1327	NAG	O5-C1-C2	2.06	114.54	111.29

There are no chirality outliers.

There are no torsion outliers.

There are no ring outliers.

No monomer is involved in short contacts.

## 5.7 Other polymers [i](#)

There are no such residues in this entry.

## 5.8 Polymer linkage issues [i](#)

There are no chain breaks in this entry.

## 6 Fit of model and data [i](#)

### 6.1 Protein, DNA and RNA chains [i](#)

In the following table, the column labelled ‘#RSRZ> 2’ contains the number (and percentage) of RSRZ outliers, followed by percent RSRZ outliers for the chain as percentile scores relative to all X-ray entries and entries of similar resolution. The OWAB column contains the minimum, median, 95<sup>th</sup> percentile and maximum values of the occupancy-weighted average B-factor per residue. The column labelled ‘Q< 0.9’ lists the number of (and percentage) of residues with an average occupancy less than 0.9.

Mol	Chain	Analysed	<RSRZ>	#RSRZ>2	OWAB(Å <sup>2</sup> )	Q<0.9
1	A	294/406 (72%)	-0.06	1 (0%) 94 92	43, 67, 127, 173	0

All (1) RSRZ outliers are listed below:

Mol	Chain	Res	Type	RSRZ
1	A	285	ARG	2.1

### 6.2 Non-standard residues in protein, DNA, RNA chains [i](#)

There are no non-standard protein/DNA/RNA residues in this entry.

### 6.3 Carbohydrates [i](#)

There are no monosaccharides in this entry.

### 6.4 Ligands [i](#)

In the following table, the Atoms column lists the number of modelled atoms in the group and the number defined in the chemical component dictionary. The B-factors column lists the minimum, median, 95<sup>th</sup> percentile and maximum values of B factors of atoms in the group. The column labelled ‘Q< 0.9’ lists the number of atoms with occupancy less than 0.9.

Mol	Type	Chain	Res	Atoms	RSCC	RSR	B-factors(Å <sup>2</sup> )	Q<0.9
2	CL	A	1323	1/1	0.80	0.13	88,88,88,88	0
2	CL	A	1326	1/1	0.82	0.19	91,91,91,91	0
2	CL	A	1324	1/1	0.84	0.18	67,67,67,67	1
3	NAG	A	1328	14/15	0.90	0.20	77,83,88,95	0
2	CL	A	1325	1/1	0.92	0.12	50,50,50,50	0
3	NAG	A	1327	14/15	0.94	0.25	64,82,104,109	0
2	CL	A	1330	1/1	0.94	0.41	79,79,79,79	0

## 6.5 Other polymers [i](#)

There are no such residues in this entry.