



# Full wwPDB X-ray Structure Validation Report ⓘ

Aug 20, 2020 – 11:16 PM BST

PDB ID : 6G4D  
Title : Crystal structure of the omega TRANSAMINASE FROM PSEUDOMONAS  
Jessenii in complex with PLP  
Authors : Rozeboom, H.J.; Janssen, D.B.  
Deposited on : 2018-03-27  
Resolution : 2.15 Å(reported)

This is a Full wwPDB X-ray Structure Validation Report for a publicly released PDB entry.

We welcome your comments at [validation@mail.wwpdb.org](mailto:validation@mail.wwpdb.org)

A user guide is available at

<https://www.wwpdb.org/validation/2017/XrayValidationReportHelp>

with specific help available everywhere you see the ⓘ symbol.

---

The following versions of software and data (see [references ⓘ](#)) were used in the production of this report:

MolProbity : 4.02b-467  
Mogul : 1.8.5 (274361), CSD as541be (2020)  
Xtriage (Phenix) : 1.13  
EDS : 2.13.1  
Percentile statistics : 20191225.v01 (using entries in the PDB archive December 25th 2019)  
Refmac : 5.8.0158  
CCP4 : 7.0.044 (Gargrove)  
Ideal geometry (proteins) : Engh & Huber (2001)  
Ideal geometry (DNA, RNA) : Parkinson et al. (1996)  
Validation Pipeline (wwPDB-VP) : 2.13.1

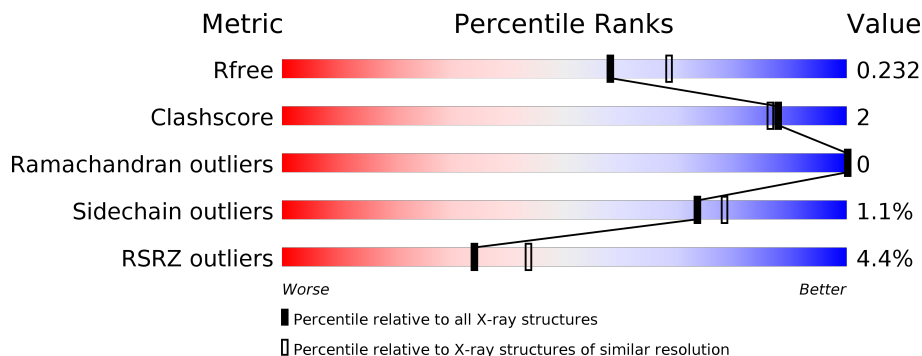
# 1 Overall quality at a glance

The following experimental techniques were used to determine the structure:

*X-RAY DIFFRACTION*

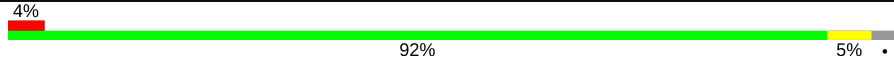
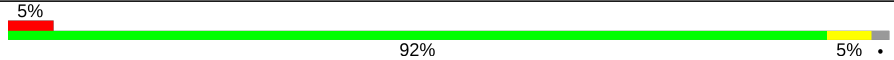
The reported resolution of this entry is 2.15 Å.

Percentile scores (ranging between 0-100) for global validation metrics of the entry are shown in the following graphic. The table shows the number of entries on which the scores are based.



Metric	Whole archive (#Entries)	Similar resolution (#Entries, resolution range(Å))
$R_{free}$	130704	1479 (2.16-2.16)
Clashscore	141614	1585 (2.16-2.16)
Ramachandran outliers	138981	1560 (2.16-2.16)
Sidechain outliers	138945	1559 (2.16-2.16)
RSRZ outliers	127900	1456 (2.16-2.16)

The table below summarises the geometric issues observed across the polymeric chains and their fit to the electron density. The red, orange, yellow and green segments on the lower bar indicate the fraction of residues that contain outliers for  $\geq 3$ , 2, 1 and 0 types of geometric quality criteria respectively. A grey segment represents the fraction of residues that are not modelled. The numeric value for each fraction is indicated below the corresponding segment, with a dot representing fractions  $\leq 5\%$ . The upper red bar (where present) indicates the fraction of residues that have poor fit to the electron density. The numeric value is given above the bar.

Mol	Chain	Length	Quality of chain
1	A	464	
1	B	464	

## 2 Entry composition i

There are 4 unique types of molecules in this entry. The entry contains 7464 atoms, of which 0 are hydrogens and 0 are deuteriums.

In the tables below, the ZeroOcc column contains the number of atoms modelled with zero occupancy, the AltConf column contains the number of residues with at least one atom in alternate conformation and the Trace column contains the number of residues modelled with at most 2 atoms.

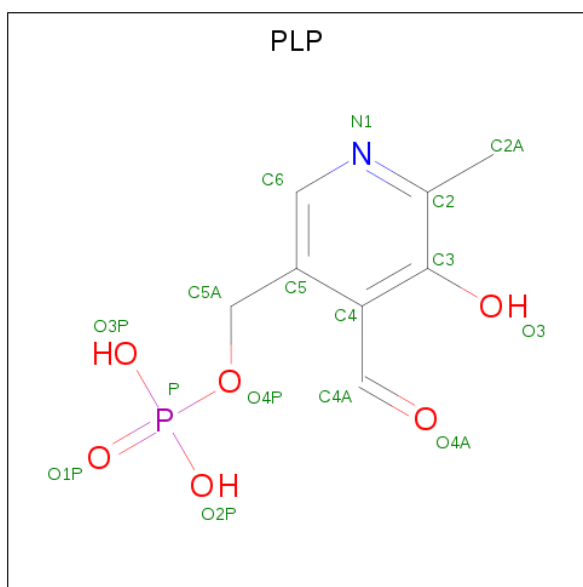
- Molecule 1 is a protein called Aspartate aminotransferase family protein.

Mol	Chain	Residues	Atoms					ZeroOcc	AltConf	Trace
			Total	C	N	O	S			
1	A	451	3470	2217	599	637	17	0	1	0
1	B	453	3494	2231	603	643	17	0	3	0

There are 18 discrepancies between the modelled and reference sequences:

Chain	Residue	Modelled	Actual	Comment	Reference
A	456	PRO	-	expression tag	UNP A0A2D8IND4
A	457	GLY	-	expression tag	UNP A0A2D8IND4
A	458	GLY	-	expression tag	UNP A0A2D8IND4
A	459	HIS	-	expression tag	UNP A0A2D8IND4
A	460	HIS	-	expression tag	UNP A0A2D8IND4
A	461	HIS	-	expression tag	UNP A0A2D8IND4
A	462	HIS	-	expression tag	UNP A0A2D8IND4
A	463	HIS	-	expression tag	UNP A0A2D8IND4
A	464	HIS	-	expression tag	UNP A0A2D8IND4
B	456	PRO	-	expression tag	UNP A0A2D8IND4
B	457	GLY	-	expression tag	UNP A0A2D8IND4
B	458	GLY	-	expression tag	UNP A0A2D8IND4
B	459	HIS	-	expression tag	UNP A0A2D8IND4
B	460	HIS	-	expression tag	UNP A0A2D8IND4
B	461	HIS	-	expression tag	UNP A0A2D8IND4
B	462	HIS	-	expression tag	UNP A0A2D8IND4
B	463	HIS	-	expression tag	UNP A0A2D8IND4
B	464	HIS	-	expression tag	UNP A0A2D8IND4

- Molecule 2 is PYRIDOXAL-5'-PHOSPHATE (three-letter code: PLP) (formula: C<sub>8</sub>H<sub>10</sub>NO<sub>6</sub>P).



Mol	Chain	Residues	Atoms					ZeroOcc	AltConf
			Total	C	N	O	P		
2	A	1	15	8	1	5	1	0	0
2	B	1	15	8	1	5	1	0	0

- Molecule 3 is GLYCEROL (three-letter code: GOL) (formula:  $C_3H_8O_3$ ).



Mol	Chain	Residues	Atoms			ZeroOcc	AltConf
			Total	C	O		
3	A	1	6	3	3	0	0
3	A	1	6	3	3	0	0

- Molecule 4 is water.

<b>Mol</b>	<b>Chain</b>	<b>Residues</b>	<b>Atoms</b>		<b>ZeroOcc</b>	<b>AltConf</b>
4	A	222	Total 222	O 222	0	0
4	B	236	Total 236	O 236	0	0



## 4 Data and refinement statistics

Property	Value	Source
Space group	P 43	Depositor
Cell constants a, b, c, $\alpha$ , $\beta$ , $\gamma$	98.81Å 98.81Å 119.16Å 90.00° 90.00° 90.00°	Depositor
Resolution (Å)	45.60 – 2.15 45.64 – 2.15	Depositor EDS
% Data completeness (in resolution range)	98.0 (45.60-2.15) 98.1 (45.64-2.15)	Depositor EDS
$R_{merge}$	(Not available)	Depositor
$R_{sym}$	(Not available)	Depositor
$\langle I/\sigma(I) \rangle$ <sup>1</sup>	2.27 (at 2.16Å)	Xtriage
Refinement program	REFMAC 5.8.0073	Depositor
R, $R_{free}$	0.227 , 0.261 0.205 , 0.232	Depositor DCC
$R_{free}$ test set	3042 reflections (5.00%)	wwPDB-VP
Wilson B-factor (Å <sup>2</sup> )	25.8	Xtriage
Anisotropy	0.107	Xtriage
Bulk solvent $k_{sol}$ (e/Å <sup>3</sup> ), $B_{sol}$ (Å <sup>2</sup> )	0.35 , 48.3	EDS
L-test for twinning <sup>2</sup>	$\langle  L  \rangle = 0.51$ , $\langle L^2 \rangle = 0.34$	Xtriage
Estimated twinning fraction	0.031 for h,-k,-l	Xtriage
$F_o, F_c$ correlation	0.94	EDS
Total number of atoms	7464	wwPDB-VP
Average B, all atoms (Å <sup>2</sup> )	41.0	wwPDB-VP

Xtriage's analysis on translational NCS is as follows: *The largest off-origin peak in the Patterson function is 3.46% of the height of the origin peak. No significant pseudotranslation is detected.*

<sup>1</sup>Intensities estimated from amplitudes.

<sup>2</sup>Theoretical values of  $\langle |L| \rangle$ ,  $\langle L^2 \rangle$  for acentric reflections are 0.5, 0.333 respectively for untwinned datasets, and 0.375, 0.2 for perfectly twinned datasets.

## 5 Model quality [i](#)

### 5.1 Standard geometry [i](#)

Bond lengths and bond angles in the following residue types are not validated in this section: GOL, PLP

The Z score for a bond length (or angle) is the number of standard deviations the observed value is removed from the expected value. A bond length (or angle) with  $|Z| > 5$  is considered an outlier worth inspection. RMSZ is the root-mean-square of all Z scores of the bond lengths (or angles).

Mol	Chain	Bond lengths		Bond angles	
		RMSZ	# Z  >5	RMSZ	# Z  >5
1	A	0.48	0/3552	0.63	1/4814 (0.0%)
1	B	0.49	0/3576	0.65	3/4846 (0.1%)
All	All	0.48	0/7128	0.64	4/9660 (0.0%)

There are no bond length outliers.

All (4) bond angle outliers are listed below:

Mol	Chain	Res	Type	Atoms	Z	Observed(°)	Ideal(°)
1	B	417	ARG	NE-CZ-NH1	6.02	123.31	120.30
1	B	249	ARG	NE-CZ-NH2	-5.72	117.44	120.30
1	A	249	ARG	NE-CZ-NH2	-5.30	117.65	120.30
1	B	417	ARG	NE-CZ-NH2	-5.09	117.76	120.30

There are no chirality outliers.

There are no planarity outliers.

### 5.2 Too-close contacts [i](#)

In the following table, the Non-H and H(model) columns list the number of non-hydrogen atoms and hydrogen atoms in the chain respectively. The H(added) column lists the number of hydrogen atoms added and optimized by MolProbity. The Clashes column lists the number of clashes within the asymmetric unit, whereas Symm-Clashes lists symmetry related clashes.

Mol	Chain	Non-H	H(model)	H(added)	Clashes	Symm-Clashes
1	A	3470	0	3445	17	0
1	B	3494	0	3464	16	0
2	A	15	0	6	0	0
2	B	15	0	6	0	0
3	A	12	0	16	0	0

*Continued on next page...*



Continued from previous page...

Mol	Chain	Non-H	H(model)	H(added)	Clashes	Symm-Clashes
4	A	222	0	0	0	0
4	B	236	0	0	1	0
All	All	7464	0	6937	28	0

The all-atom clashscore is defined as the number of clashes found per 1000 atoms (including hydrogen atoms). The all-atom clashscore for this structure is 2.

All (28) close contacts within the same asymmetric unit are listed below, sorted by their clash magnitude.

Atom-1	Atom-2	Interatomic distance (Å)	Clash overlap (Å)
1:A:135:ALA:HB2	1:A:312:GLN:HG3	1.47	0.95
1:B:385[B]:LEU:HD11	1:B:405:MET:HG3	1.76	0.68
1:A:135:ALA:HB2	1:A:312:GLN:CG	2.24	0.65
1:B:385[B]:LEU:CD1	1:B:405:MET:HG3	2.30	0.62
1:A:385:LEU:HD11	1:A:405:MET:HG3	1.82	0.60
1:B:435:GLU:HA	1:B:438:MET:HE2	1.91	0.52
1:A:303:ALA:HB3	1:A:304:PRO:HD3	1.95	0.48
1:B:303:ALA:HB3	1:B:304:PRO:HD3	1.95	0.47
1:B:249:ARG:HD2	1:B:249:ARG:N	2.30	0.46
1:B:417:ARG:NE	4:B:601:HOH:O	2.36	0.45
1:A:111:LYS:HG3	1:A:306:PHE:CD1	2.52	0.45
1:A:173:LEU:HB3	1:A:174:PRO:HA	1.99	0.44
1:B:112:VAL:HG22	1:B:300:LEU:HD22	1.99	0.43
1:B:173:LEU:HB3	1:B:174:PRO:HA	2.00	0.43
1:A:135:ALA:CB	1:A:312:GLN:CG	2.96	0.43
1:A:135:ALA:CB	1:A:312:GLN:HG3	2.35	0.42
1:A:317:GLY:O	1:B:22:ASN:HB2	2.19	0.42
1:A:385:LEU:HD11	1:A:405:MET:CG	2.50	0.42
1:B:111:LYS:HG3	1:B:306:PHE:CD1	2.55	0.41
1:B:154:ILE:HA	1:B:159:ALA:HB2	2.02	0.41
1:A:154:ILE:HA	1:A:159:ALA:HB2	2.01	0.41
1:A:24:ARG:NH2	1:B:307:GLU:OE1	2.36	0.41
1:A:385:LEU:CD1	1:A:405:MET:HG3	2.49	0.40
1:A:70:ILE:HG12	1:B:77:PHE:HB3	2.04	0.40
1:A:77:PHE:HB3	1:B:70:ILE:HG12	2.03	0.40
1:A:322:GLY:HA3	1:B:19:PRO:HB3	2.03	0.40
1:A:92:ARG:HB3	1:A:93:PRO:HD3	2.02	0.40
1:B:92:ARG:HB3	1:B:93:PRO:HD3	2.03	0.40

There are no symmetry-related clashes.

## 5.3 Torsion angles [i](#)

### 5.3.1 Protein backbone [i](#)

In the following table, the Percentiles column shows the percent Ramachandran outliers of the chain as a percentile score with respect to all X-ray entries followed by that with respect to entries of similar resolution.

The Analysed column shows the number of residues for which the backbone conformation was analysed, and the total number of residues.

Mol	Chain	Analysed	Favoured	Allowed	Outliers	Percentiles	
1	A	450/464 (97%)	430 (96%)	20 (4%)	0	100	100
1	B	454/464 (98%)	432 (95%)	22 (5%)	0	100	100
All	All	904/928 (97%)	862 (95%)	42 (5%)	0	100	100

There are no Ramachandran outliers to report.

### 5.3.2 Protein sidechains [i](#)

In the following table, the Percentiles column shows the percent sidechain outliers of the chain as a percentile score with respect to all X-ray entries followed by that with respect to entries of similar resolution.

The Analysed column shows the number of residues for which the sidechain conformation was analysed, and the total number of residues.

Mol	Chain	Analysed	Rotameric	Outliers	Percentiles	
1	A	361/371 (97%)	357 (99%)	4 (1%)	73	78
1	B	363/371 (98%)	359 (99%)	4 (1%)	73	78
All	All	724/742 (98%)	716 (99%)	8 (1%)	73	78

All (8) residues with a non-rotameric sidechain are listed below:

Mol	Chain	Res	Type
1	A	52	GLU
1	A	147	ARG
1	A	249	ARG
1	A	349	GLU
1	B	52	GLU
1	B	147	ARG
1	B	249	ARG
1	B	434	GLN

Some sidechains can be flipped to improve hydrogen bonding and reduce clashes. There are no such sidechains identified.

### 5.3.3 RNA [i](#)

There are no RNA molecules in this entry.

## 5.4 Non-standard residues in protein, DNA, RNA chains [i](#)

There are no non-standard protein/DNA/RNA residues in this entry.

## 5.5 Carbohydrates [i](#)

There are no monosaccharides in this entry.

## 5.6 Ligand geometry [i](#)

4 ligands are modelled in this entry.

In the following table, the Counts columns list the number of bonds (or angles) for which Mogul statistics could be retrieved, the number of bonds (or angles) that are observed in the model and the number of bonds (or angles) that are defined in the Chemical Component Dictionary. The Link column lists molecule types, if any, to which the group is linked. The Z score for a bond length (or angle) is the number of standard deviations the observed value is removed from the expected value. A bond length (or angle) with  $|Z| > 2$  is considered an outlier worth inspection. RMSZ is the root-mean-square of all Z scores of the bond lengths (or angles).

Mol	Type	Chain	Res	Link	Bond lengths			Bond angles		
					Counts	RMSZ	# Z  > 2	Counts	RMSZ	# Z  > 2
2	PLP	A	501	1	15,15,16	3.19	4 (26%)	20,22,23	2.09	5 (25%)
2	PLP	B	501	1	15,15,16	3.32	3 (20%)	20,22,23	2.15	7 (35%)
3	GOL	A	502	-	5,5,5	0.41	0	5,5,5	0.40	0
3	GOL	A	503	-	5,5,5	0.44	0	5,5,5	0.31	0

In the following table, the Chirals column lists the number of chiral outliers, the number of chiral centers analysed, the number of these observed in the model and the number defined in the Chemical Component Dictionary. Similar counts are reported in the Torsion and Rings columns. '-' means no outliers of that kind were identified.

Mol	Type	Chain	Res	Link	Chirals	Torsions	Rings
2	PLP	A	501	1	-	1/6/6/8	0/1/1/1
2	PLP	B	501	1	-	0/6/6/8	0/1/1/1

*Continued on next page...*

Continued from previous page...

Mol	Type	Chain	Res	Link	Chirals	Torsions	Rings
3	GOL	A	502	-	-	2/4/4/4	-
3	GOL	A	503	-	-	3/4/4/4	-

All (7) bond length outliers are listed below:

Mol	Chain	Res	Type	Atoms	Z	Observed(Å)	Ideal(Å)
2	B	501	PLP	C5-C4	9.30	1.50	1.40
2	A	501	PLP	C5-C4	8.11	1.49	1.40
2	A	501	PLP	C3-C2	7.58	1.48	1.40
2	B	501	PLP	C3-C2	6.99	1.47	1.40
2	B	501	PLP	C3-C4	4.12	1.48	1.40
2	A	501	PLP	C3-C4	3.95	1.48	1.40
2	A	501	PLP	C6-C5	2.10	1.42	1.37

All (12) bond angle outliers are listed below:

Mol	Chain	Res	Type	Atoms	Z	Observed(°)	Ideal(°)
2	B	501	PLP	C4A-C4-C5	6.07	127.19	120.94
2	A	501	PLP	C4A-C4-C5	6.00	127.11	120.94
2	A	501	PLP	C3-C4-C5	-3.95	114.48	118.74
2	B	501	PLP	C3-C4-C5	-3.06	115.44	118.74
2	B	501	PLP	C2A-C2-C3	-2.77	117.47	120.89
2	A	501	PLP	O4P-C5A-C5	2.58	114.27	109.35
2	B	501	PLP	O4P-C5A-C5	2.51	114.13	109.35
2	A	501	PLP	O3P-P-O2P	2.31	116.45	107.64
2	B	501	PLP	O4P-P-O1P	-2.28	100.08	106.47
2	B	501	PLP	C2A-C2-N1	2.27	122.11	117.67
2	B	501	PLP	O3P-P-O2P	2.23	116.15	107.64
2	A	501	PLP	C2A-C2-N1	2.12	121.81	117.67

There are no chirality outliers.

All (6) torsion outliers are listed below:

Mol	Chain	Res	Type	Atoms
2	A	501	PLP	C5A-O4P-P-O1P
3	A	502	GOL	O1-C1-C2-C3
3	A	503	GOL	O1-C1-C2-C3
3	A	502	GOL	O1-C1-C2-O2
3	A	503	GOL	C1-C2-C3-O3
3	A	503	GOL	O1-C1-C2-O2

There are no ring outliers.

No monomer is involved in short contacts.

## 5.7 Other polymers

There are no such residues in this entry.

## 5.8 Polymer linkage issues

There are no chain breaks in this entry.

## 6 Fit of model and data

### 6.1 Protein, DNA and RNA chains

In the following table, the column labelled ‘#RSRZ> 2’ contains the number (and percentage) of RSRZ outliers, followed by percent RSRZ outliers for the chain as percentile scores relative to all X-ray entries and entries of similar resolution. The OWAB column contains the minimum, median, 95<sup>th</sup> percentile and maximum values of the occupancy-weighted average B-factor per residue. The column labelled ‘Q< 0.9’ lists the number of (and percentage) of residues with an average occupancy less than 0.9.

Mol	Chain	Analysed	<RSRZ>	#RSRZ>2	OWAB(Å <sup>2</sup> )	Q<0.9
1	A	451/464 (97%)	-0.05	18 (3%) 38 47	29, 39, 58, 79	0
1	B	453/464 (97%)	-0.13	22 (4%) 29 38	29, 37, 56, 102	0
All	All	904/928 (97%)	-0.09	40 (4%) 34 43	29, 38, 58, 102	0

All (40) RSRZ outliers are listed below:

Mol	Chain	Res	Type	RSRZ
1	B	6	SER	7.9
1	B	458	GLY	6.0
1	B	7	SER	4.8
1	A	6	SER	4.4
1	A	317	GLY	4.2
1	B	8	LEU	3.9
1	A	456	PRO	3.6
1	A	315	ALA	3.3
1	B	154	ILE	3.2
1	B	13	ILE	2.9
1	A	192	ALA	2.8
1	A	115	THR	2.8
1	B	29	LEU	2.8
1	A	318	ALA	2.7
1	A	193	GLY	2.6
1	A	313	SER	2.5
1	A	252	ASP	2.4
1	A	312	GLN	2.4
1	B	155	THR	2.4
1	B	115	THR	2.4
1	B	28	GLU	2.4
1	B	57	LEU	2.3
1	B	10	GLU	2.3
1	B	117	SER	2.3

*Continued on next page...*

*Continued from previous page...*

Mol	Chain	Res	Type	RSRZ
1	B	116	ASN	2.3
1	B	209	GLN	2.2
1	A	118	GLY	2.2
1	B	323	PHE	2.2
1	A	154	ILE	2.2
1	A	7	SER	2.2
1	B	119	SER	2.2
1	B	125	VAL	2.2
1	A	239	THR	2.2
1	B	14	GLN	2.1
1	A	113	PHE	2.1
1	B	260	VAL	2.1
1	A	119	SER	2.0
1	B	23	ALA	2.0
1	B	25	LEU	2.0
1	A	311	ASP	2.0

## 6.2 Non-standard residues in protein, DNA, RNA chains [i](#)

There are no non-standard protein/DNA/RNA residues in this entry.

## 6.3 Carbohydrates [i](#)

There are no monosaccharides in this entry.

## 6.4 Ligands [i](#)

In the following table, the Atoms column lists the number of modelled atoms in the group and the number defined in the chemical component dictionary. The B-factors column lists the minimum, median, 95<sup>th</sup> percentile and maximum values of B factors of atoms in the group. The column labelled 'Q< 0.9' lists the number of atoms with occupancy less than 0.9.

Mol	Type	Chain	Res	Atoms	RSCC	RSR	B-factors(Å <sup>2</sup> )	Q<0.9
3	GOL	A	503	6/6	0.80	0.47	64,69,77,80	0
3	GOL	A	502	6/6	0.83	0.17	55,62,64,69	0
2	PLP	B	501	15/16	0.95	0.16	38,44,47,49	0
2	PLP	A	501	15/16	0.97	0.13	34,36,40,42	0

## 6.5 Other polymers

There are no such residues in this entry.