



Full wwPDB X-ray Structure Validation Report ⓘ

May 26, 2020 – 05:35 pm BST

PDB ID : 4G56
Title : Crystal Structure of full length PRMT5/MEP50 complexes from *Xenopus laevis*
Authors : Ho, M.; Wilczek, C.; Bonanno, J.; Shechter, D.; Almo, S.C.; New York Structural Genomics Research Consortium (NYSGRC)
Deposited on : 2012-07-17
Resolution : 2.95 Å(reported)

This is a Full wwPDB X-ray Structure Validation Report for a publicly released PDB entry.

We welcome your comments at validation@mail.wwpdb.org

A user guide is available at

<https://www.wwpdb.org/validation/2017/XrayValidationReportHelp>

with specific help available everywhere you see the ⓘ symbol.

The following versions of software and data (see [references ⓘ](#)) were used in the production of this report:

MolProbity : 4.02b-467
Mogul : 1.8.5 (274361), CSD as541be (2020)
Xtriage (Phenix) : 1.13
EDS : 2.11
buster-report : 1.1.7 (2018)
Percentile statistics : 20191225.v01 (using entries in the PDB archive December 25th 2019)
Refmac : 5.8.0158
CCP4 : 7.0.044 (Gargrove)
Ideal geometry (proteins) : Engh & Huber (2001)
Ideal geometry (DNA, RNA) : Parkinson et al. (1996)
Validation Pipeline (wwPDB-VP) : 2.11

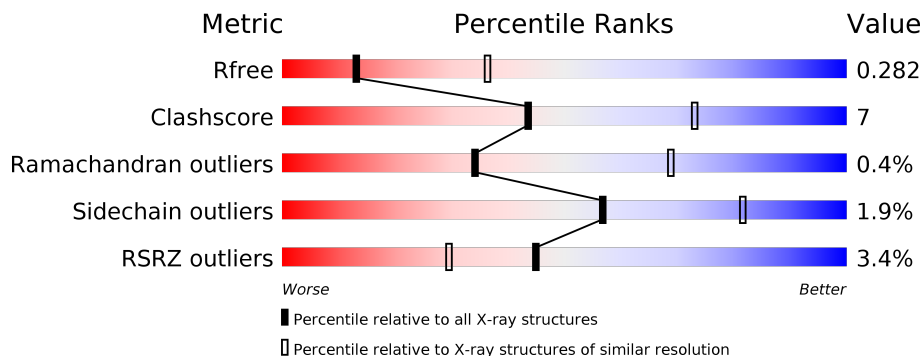
1 Overall quality at a glance

The following experimental techniques were used to determine the structure:

X-RAY DIFFRACTION

The reported resolution of this entry is 2.95 Å.

Percentile scores (ranging between 0-100) for global validation metrics of the entry are shown in the following graphic. The table shows the number of entries on which the scores are based.



Metric	Whole archive (#Entries)	Similar resolution (#Entries, resolution range(Å))
R_{free}	130704	3104 (3.00-2.92)
Clashscore	141614	3462 (3.00-2.92)
Ramachandran outliers	138981	3340 (3.00-2.92)
Sidechain outliers	138945	3343 (3.00-2.92)
RSRZ outliers	127900	2986 (3.00-2.92)

The table below summarises the geometric issues observed across the polymeric chains and their fit to the electron density. The red, orange, yellow and green segments on the lower bar indicate the fraction of residues that contain outliers for ≥ 3 , 2, 1 and 0 types of geometric quality criteria respectively. A grey segment represents the fraction of residues that are not modelled. The numeric value for each fraction is indicated below the corresponding segment, with a dot representing fractions $\leq 5\%$. The upper red bar (where present) indicates the fraction of residues that have poor fit to the electron density. The numeric value is given above the bar.

Mol	Chain	Length	Quality of chain
1	A	657	 % 79% 14% • 6%
1	C	657	 2% 77% 14% 8%
2	B	357	 10% 64% 18% 18%
2	D	357	 % 71% 13% • 15%

2 Entry composition [i](#)

There are 4 unique types of molecules in this entry. The entry contains 14474 atoms, of which 0 are hydrogens and 0 are deuteriums.

In the tables below, the ZeroOcc column contains the number of atoms modelled with zero occupancy, the AltConf column contains the number of residues with at least one atom in alternate conformation and the Trace column contains the number of residues modelled with at most 2 atoms.

- Molecule 1 is a protein called Hsl7 protein.

Mol	Chain	Residues	Atoms						ZeroOcc	AltConf	Trace
			Total	C	N	O	S	Se			
1	A	617	4988	3193	852	916	14	13	0	0	0
1	C	602	4867	3117	832	892	14	12	0	0	0

There are 50 discrepancies between the modelled and reference sequences:

Chain	Residue	Modelled	Actual	Comment	Reference
A	-23	MSE	-	EXPRESSION TAG	UNP Q6NUA1
A	-22	HIS	-	EXPRESSION TAG	UNP Q6NUA1
A	-21	HIS	-	EXPRESSION TAG	UNP Q6NUA1
A	-20	HIS	-	EXPRESSION TAG	UNP Q6NUA1
A	-19	HIS	-	EXPRESSION TAG	UNP Q6NUA1
A	-18	HIS	-	EXPRESSION TAG	UNP Q6NUA1
A	-17	HIS	-	EXPRESSION TAG	UNP Q6NUA1
A	-16	SER	-	EXPRESSION TAG	UNP Q6NUA1
A	-15	SER	-	EXPRESSION TAG	UNP Q6NUA1
A	-14	GLY	-	EXPRESSION TAG	UNP Q6NUA1
A	-13	VAL	-	EXPRESSION TAG	UNP Q6NUA1
A	-12	ASP	-	EXPRESSION TAG	UNP Q6NUA1
A	-11	LEU	-	EXPRESSION TAG	UNP Q6NUA1
A	-10	GLY	-	EXPRESSION TAG	UNP Q6NUA1
A	-9	THR	-	EXPRESSION TAG	UNP Q6NUA1
A	-8	GLU	-	EXPRESSION TAG	UNP Q6NUA1
A	-7	ASN	-	EXPRESSION TAG	UNP Q6NUA1
A	-6	LEU	-	EXPRESSION TAG	UNP Q6NUA1
A	-5	TYR	-	EXPRESSION TAG	UNP Q6NUA1
A	-4	PHE	-	EXPRESSION TAG	UNP Q6NUA1
A	-3	GLN	-	EXPRESSION TAG	UNP Q6NUA1
A	-2	SER	-	EXPRESSION TAG	UNP Q6NUA1
A	-1	ASN	-	EXPRESSION TAG	UNP Q6NUA1
A	0	GLY	-	EXPRESSION TAG	UNP Q6NUA1
A	1	SER	-	EXPRESSION TAG	UNP Q6NUA1

Continued on next page...

Continued from previous page...

Chain	Residue	Modelled	Actual	Comment	Reference
C	-23	MSE	-	EXPRESSION TAG	UNP Q6NUA1
C	-22	HIS	-	EXPRESSION TAG	UNP Q6NUA1
C	-21	HIS	-	EXPRESSION TAG	UNP Q6NUA1
C	-20	HIS	-	EXPRESSION TAG	UNP Q6NUA1
C	-19	HIS	-	EXPRESSION TAG	UNP Q6NUA1
C	-18	HIS	-	EXPRESSION TAG	UNP Q6NUA1
C	-17	HIS	-	EXPRESSION TAG	UNP Q6NUA1
C	-16	SER	-	EXPRESSION TAG	UNP Q6NUA1
C	-15	SER	-	EXPRESSION TAG	UNP Q6NUA1
C	-14	GLY	-	EXPRESSION TAG	UNP Q6NUA1
C	-13	VAL	-	EXPRESSION TAG	UNP Q6NUA1
C	-12	ASP	-	EXPRESSION TAG	UNP Q6NUA1
C	-11	LEU	-	EXPRESSION TAG	UNP Q6NUA1
C	-10	GLY	-	EXPRESSION TAG	UNP Q6NUA1
C	-9	THR	-	EXPRESSION TAG	UNP Q6NUA1
C	-8	GLU	-	EXPRESSION TAG	UNP Q6NUA1
C	-7	ASN	-	EXPRESSION TAG	UNP Q6NUA1
C	-6	LEU	-	EXPRESSION TAG	UNP Q6NUA1
C	-5	TYR	-	EXPRESSION TAG	UNP Q6NUA1
C	-4	PHE	-	EXPRESSION TAG	UNP Q6NUA1
C	-3	GLN	-	EXPRESSION TAG	UNP Q6NUA1
C	-2	SER	-	EXPRESSION TAG	UNP Q6NUA1
C	-1	ASN	-	EXPRESSION TAG	UNP Q6NUA1
C	0	GLY	-	EXPRESSION TAG	UNP Q6NUA1
C	1	SER	-	EXPRESSION TAG	UNP Q6NUA1

- Molecule 2 is a protein called MGC81050 protein.

Mol	Chain	Residues	Atoms					ZeroOcc	AltConf	Trace	
			Total	C	N	O	S				Se
2	B	292	2238	1409	380	440	8	1	0	0	0
2	D	303	2320	1461	392	458	8	1	0	0	0

There are 50 discrepancies between the modelled and reference sequences:

Chain	Residue	Modelled	Actual	Comment	Reference
B	-23	MSE	-	EXPRESSION TAG	UNP Q6NUD0
B	-22	HIS	-	EXPRESSION TAG	UNP Q6NUD0
B	-21	HIS	-	EXPRESSION TAG	UNP Q6NUD0
B	-20	HIS	-	EXPRESSION TAG	UNP Q6NUD0
B	-19	HIS	-	EXPRESSION TAG	UNP Q6NUD0

Continued on next page...

Continued from previous page...

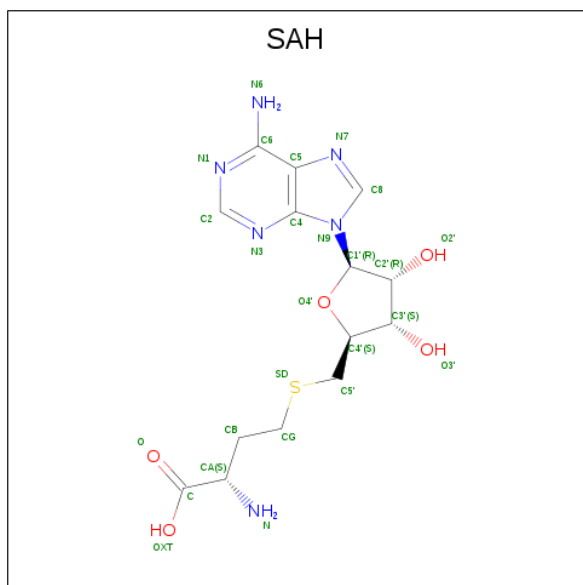
Chain	Residue	Modelled	Actual	Comment	Reference
B	-18	HIS	-	EXPRESSION TAG	UNP Q6NUD0
B	-17	HIS	-	EXPRESSION TAG	UNP Q6NUD0
B	-16	SER	-	EXPRESSION TAG	UNP Q6NUD0
B	-15	SER	-	EXPRESSION TAG	UNP Q6NUD0
B	-14	GLY	-	EXPRESSION TAG	UNP Q6NUD0
B	-13	VAL	-	EXPRESSION TAG	UNP Q6NUD0
B	-12	ASP	-	EXPRESSION TAG	UNP Q6NUD0
B	-11	LEU	-	EXPRESSION TAG	UNP Q6NUD0
B	-10	GLY	-	EXPRESSION TAG	UNP Q6NUD0
B	-9	THR	-	EXPRESSION TAG	UNP Q6NUD0
B	-8	GLU	-	EXPRESSION TAG	UNP Q6NUD0
B	-7	ASN	-	EXPRESSION TAG	UNP Q6NUD0
B	-6	LEU	-	EXPRESSION TAG	UNP Q6NUD0
B	-5	TYR	-	EXPRESSION TAG	UNP Q6NUD0
B	-4	PHE	-	EXPRESSION TAG	UNP Q6NUD0
B	-3	GLN	-	EXPRESSION TAG	UNP Q6NUD0
B	-2	SER	-	EXPRESSION TAG	UNP Q6NUD0
B	-1	ASN	-	EXPRESSION TAG	UNP Q6NUD0
B	0	GLY	-	EXPRESSION TAG	UNP Q6NUD0
B	1	SER	-	EXPRESSION TAG	UNP Q6NUD0
D	-23	MSE	-	EXPRESSION TAG	UNP Q6NUD0
D	-22	HIS	-	EXPRESSION TAG	UNP Q6NUD0
D	-21	HIS	-	EXPRESSION TAG	UNP Q6NUD0
D	-20	HIS	-	EXPRESSION TAG	UNP Q6NUD0
D	-19	HIS	-	EXPRESSION TAG	UNP Q6NUD0
D	-18	HIS	-	EXPRESSION TAG	UNP Q6NUD0
D	-17	HIS	-	EXPRESSION TAG	UNP Q6NUD0
D	-16	SER	-	EXPRESSION TAG	UNP Q6NUD0
D	-15	SER	-	EXPRESSION TAG	UNP Q6NUD0
D	-14	GLY	-	EXPRESSION TAG	UNP Q6NUD0
D	-13	VAL	-	EXPRESSION TAG	UNP Q6NUD0
D	-12	ASP	-	EXPRESSION TAG	UNP Q6NUD0
D	-11	LEU	-	EXPRESSION TAG	UNP Q6NUD0
D	-10	GLY	-	EXPRESSION TAG	UNP Q6NUD0
D	-9	THR	-	EXPRESSION TAG	UNP Q6NUD0
D	-8	GLU	-	EXPRESSION TAG	UNP Q6NUD0
D	-7	ASN	-	EXPRESSION TAG	UNP Q6NUD0
D	-6	LEU	-	EXPRESSION TAG	UNP Q6NUD0
D	-5	TYR	-	EXPRESSION TAG	UNP Q6NUD0
D	-4	PHE	-	EXPRESSION TAG	UNP Q6NUD0
D	-3	GLN	-	EXPRESSION TAG	UNP Q6NUD0
D	-2	SER	-	EXPRESSION TAG	UNP Q6NUD0

Continued on next page...

Continued from previous page...

Chain	Residue	Modelled	Actual	Comment	Reference
D	-1	ASN	-	EXPRESSION TAG	UNP Q6NUD0
D	0	GLY	-	EXPRESSION TAG	UNP Q6NUD0
D	1	SER	-	EXPRESSION TAG	UNP Q6NUD0

- Molecule 3 is S-ADENOSYL-L-HOMOCYSTEINE (three-letter code: SAH) (formula: $C_{14}H_{20}N_6O_5S$).

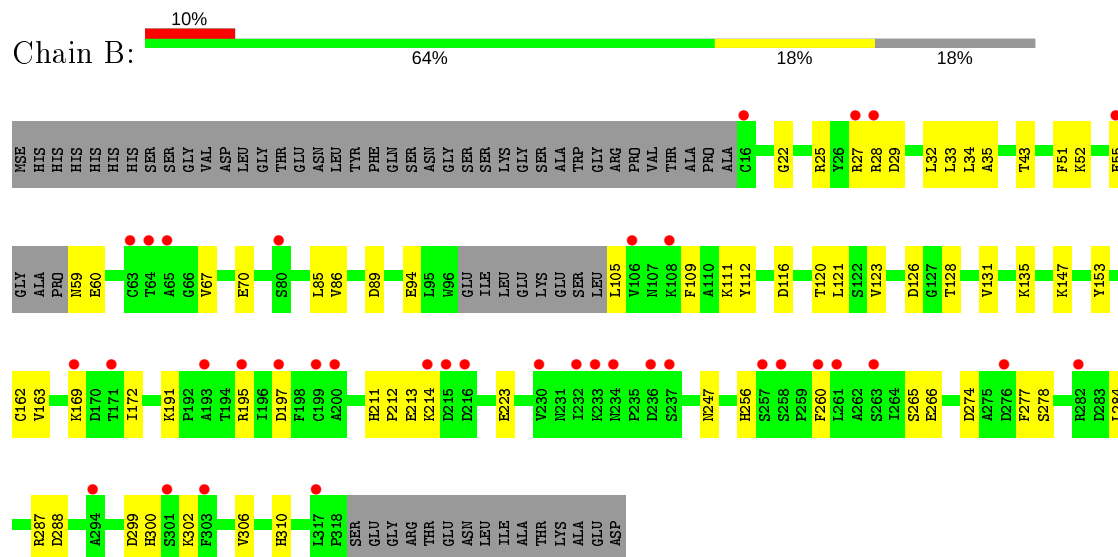


Mol	Chain	Residues	Atoms					ZeroOcc	AltConf	
			Total	C	N	O	S			
3	A	1	Total	26	14	6	5	1	0	0
3	C	1	Total	26	14	6	5	1	0	0

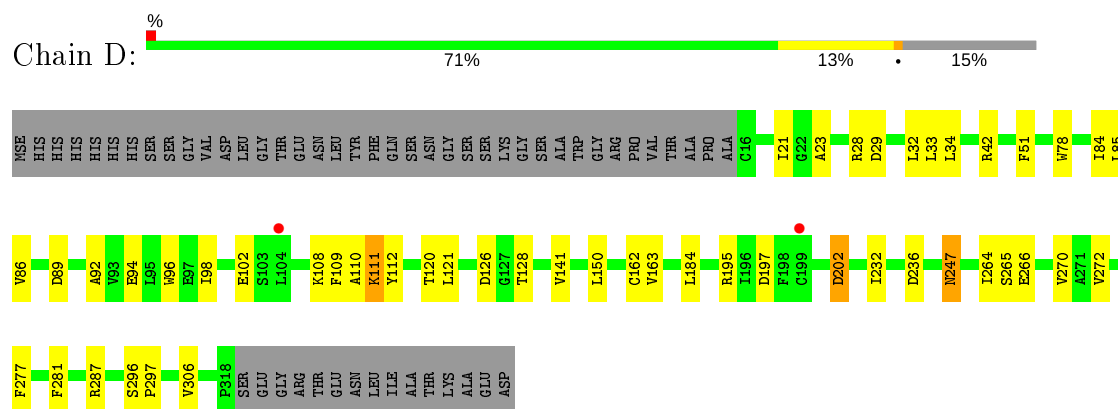
- Molecule 4 is water.

Mol	Chain	Residues	Atoms		ZeroOcc	AltConf	
			Total	O			
4	A	6	Total	6	6	0	0
4	C	3	Total	3	3	0	0

- Molecule 2: MGC81050 protein



- Molecule 2: MGC81050 protein



4 Data and refinement statistics

Property	Value	Source
Space group	P 21 21 2	Depositor
Cell constants a, b, c, α , β , γ	181.86Å 101.94Å 125.68Å 90.00° 90.00° 90.00°	Depositor
Resolution (Å)	37.90 – 2.95 37.90 – 2.95	Depositor EDS
% Data completeness (in resolution range)	97.6 (37.90-2.95) 93.9 (37.90-2.95)	Depositor EDS
R_{merge}	0.15	Depositor
R_{sym}	(Not available)	Depositor
$\langle I/\sigma(I) \rangle$ ¹	1.74 (at 2.95Å)	Xtrriage
Refinement program	PHENIX 1.8_1069	Depositor
R, R_{free}	0.218 , 0.276 0.224 , 0.282	Depositor DCC
R_{free} test set	2000 reflections (4.01%)	wwPDB-VP
Wilson B-factor (Å ²)	53.3	Xtrriage
Anisotropy	0.261	Xtrriage
Bulk solvent k_{sol} (e/Å ³), B_{sol} (Å ²)	0.29 , 38.2	EDS
L-test for twinning ²	$\langle L \rangle = 0.48$, $\langle L^2 \rangle = 0.31$	Xtrriage
Estimated twinning fraction	No twinning to report.	Xtrriage
F_o, F_c correlation	0.91	EDS
Total number of atoms	14474	wwPDB-VP
Average B, all atoms (Å ²)	65.0	wwPDB-VP

Xtrriage's analysis on translational NCS is as follows: *The largest off-origin peak in the Patterson function is 2.70% of the height of the origin peak. No significant pseudotranslation is detected.*

¹Intensities estimated from amplitudes.

²Theoretical values of $\langle |L| \rangle$, $\langle L^2 \rangle$ for acentric reflections are 0.5, 0.333 respectively for untwinned datasets, and 0.375, 0.2 for perfectly twinned datasets.

5 Model quality [i](#)

5.1 Standard geometry [i](#)

Bond lengths and bond angles in the following residue types are not validated in this section: SAH

The Z score for a bond length (or angle) is the number of standard deviations the observed value is removed from the expected value. A bond length (or angle) with $|Z| > 5$ is considered an outlier worth inspection. RMSZ is the root-mean-square of all Z scores of the bond lengths (or angles).

Mol	Chain	Bond lengths		Bond angles	
		RMSZ	# Z >5	RMSZ	# Z >5
1	A	0.21	0/5114	0.37	0/6923
1	C	0.20	0/4989	0.36	0/6755
2	B	0.22	0/2290	0.38	0/3116
2	D	0.21	0/2375	0.38	0/3234
All	All	0.21	0/14768	0.37	0/20028

There are no bond length outliers.

There are no bond angle outliers.

There are no chirality outliers.

There are no planarity outliers.

5.2 Too-close contacts [i](#)

In the following table, the Non-H and H(model) columns list the number of non-hydrogen atoms and hydrogen atoms in the chain respectively. The H(added) column lists the number of hydrogen atoms added and optimized by MolProbity. The Clashes column lists the number of clashes within the asymmetric unit, whereas Symm-Clashes lists symmetry related clashes.

Mol	Chain	Non-H	H(model)	H(added)	Clashes	Symm-Clashes
1	A	4988	0	4874	58	0
1	C	4867	0	4761	53	0
2	B	2238	0	2146	39	0
2	D	2320	0	2232	48	0
3	A	26	0	19	0	0
3	C	26	0	19	0	0
4	A	6	0	0	0	0
4	C	3	0	0	0	0
All	All	14474	0	14051	191	0

The all-atom clashscore is defined as the number of clashes found per 1000 atoms (including hydrogen atoms). The all-atom clashscore for this structure is 7.

All (191) close contacts within the same asymmetric unit are listed below, sorted by their clash magnitude.

Atom-1	Atom-2	Interatomic distance (Å)	Clash overlap (Å)
2:D:21:ILE:CG2	2:D:34:LEU:HD11	1.42	1.45
1:C:31:GLN:OE1	1:C:274:CYS:HB3	1.46	1.13
2:D:23:ALA:O	2:D:34:LEU:HD12	1.50	1.08
2:D:21:ILE:HG21	2:D:34:LEU:HD11	1.34	1.08
2:D:21:ILE:HG22	2:D:34:LEU:HD11	1.35	1.04
2:D:21:ILE:CG2	2:D:34:LEU:CD1	2.35	1.03
1:A:295:MSE:HG3	1:A:296:PHE:N	1.78	0.96
2:D:109:PHE:HD2	2:D:111:LYS:HG2	1.34	0.92
2:B:109:PHE:CD2	2:B:111:LYS:HG2	2.04	0.92
2:D:109:PHE:CD2	2:D:111:LYS:HG2	2.11	0.85
2:D:21:ILE:HG23	2:D:34:LEU:HD11	1.60	0.76
1:A:358:MSE:HG2	1:A:385:TYR:HB2	1.69	0.74
2:B:109:PHE:HD2	2:B:111:LYS:HG2	1.48	0.74
1:A:563:ILE:HG21	1:A:575:TRP:HB2	1.70	0.73
1:C:358:MSE:HG2	1:C:385:TYR:HB2	1.71	0.72
1:C:563:ILE:HG21	1:C:575:TRP:HB2	1.73	0.71
1:A:295:MSE:HG3	1:A:296:PHE:H	1.55	0.70
2:D:111:LYS:CE	2:D:111:LYS:HA	2.22	0.70
2:D:110:ALA:C	2:D:111:LYS:HE3	2.14	0.68
2:D:21:ILE:HD13	2:D:34:LEU:HD21	1.74	0.68
2:D:110:ALA:O	2:D:111:LYS:HE3	1.93	0.68
2:B:32:LEU:HB3	2:B:51:PHE:HB2	1.76	0.66
1:C:489:ASP:HB3	1:C:492:ALA:HB2	1.77	0.66
1:A:489:ASP:HB3	1:A:492:ALA:HB2	1.78	0.66
1:C:595:CYS:SG	1:C:597:ARG:NH1	2.70	0.65
2:B:109:PHE:CE2	2:B:111:LYS:HG2	2.32	0.65
1:C:99:GLU:HG2	1:C:132:LEU:HD11	1.79	0.64
1:C:349:GLU:HA	1:C:352:THR:HG22	1.79	0.64
1:A:193:ASP:OD1	1:A:481:ARG:NH2	2.31	0.63
2:D:23:ALA:O	2:D:34:LEU:CD1	2.39	0.63
1:A:295:MSE:CG	1:A:296:PHE:N	2.58	0.63
1:A:146:PHE:HB3	1:A:148:MSE:HE3	1.81	0.62
2:D:195:ARG:NH1	2:D:197:ASP:OD2	2.32	0.61
2:D:21:ILE:HG21	2:D:34:LEU:CD1	2.13	0.61
2:B:25:ARG:HB2	2:B:33:LEU:HB3	1.81	0.60
1:C:387:VAL:HG12	1:C:412:VAL:HB	1.84	0.60
1:A:44:ARG:NH1	2:B:89:ASP:OD1	2.35	0.59

Continued on next page...

Continued from previous page...

Atom-1	Atom-2	Interatomic distance (Å)	Clash overlap (Å)
1:A:42:HIS:HB3	1:A:45:PHE:HB2	1.84	0.59
1:A:103:GLN:O	1:A:107:ASN:ND2	2.32	0.59
2:B:169:LYS:HD3	2:B:172:ILE:HD12	1.85	0.59
1:C:31:GLN:OE1	1:C:274:CYS:CB	2.36	0.58
1:C:345:VAL:O	1:C:380:ARG:NH2	2.37	0.58
1:A:438:ASP:OD2	1:A:600:ARG:NH1	2.37	0.57
1:C:247:GLN:NE2	1:C:279:TYR:OH	2.38	0.57
2:D:111:LYS:HE3	2:D:111:LYS:CA	2.36	0.56
2:B:211:HIS:HD2	2:B:212:PRO:HD2	1.69	0.56
1:C:415:ASP:HB3	1:C:418:GLU:HG2	1.88	0.56
2:D:202:ASP:N	2:D:202:ASP:OD1	2.39	0.56
1:A:339:LYS:NZ	1:A:558:ASP:OD1	2.38	0.55
1:A:398:GLU:HA	1:A:401:ARG:HB3	1.89	0.55
2:B:34:LEU:HD11	2:B:306:VAL:HG11	1.88	0.55
1:C:208:LEU:HD12	1:C:245:VAL:HG12	1.87	0.55
2:D:111:LYS:HE3	2:D:111:LYS:HA	1.88	0.55
2:D:111:LYS:HE2	2:D:111:LYS:HA	1.90	0.54
1:C:140:GLY:O	1:C:142:HIS:ND1	2.31	0.54
1:C:537:ARG:NH1	1:C:539:ASP:OD1	2.39	0.54
2:D:111:LYS:CE	2:D:111:LYS:CA	2.86	0.54
2:B:85:LEU:HB3	2:B:121:LEU:HD11	1.89	0.54
1:C:433:LEU:HD23	1:C:551:PHE:HE2	1.73	0.53
1:A:415:ASP:HB3	1:A:418:GLU:HG2	1.90	0.53
1:A:291:ASN:C	1:A:293:TYR:H	2.11	0.53
1:A:294:GLU:HA	1:A:297:ALA:HB3	1.90	0.53
1:C:438:ASP:OD2	1:C:600:ARG:NH1	2.41	0.53
1:A:304:LEU:HD22	1:A:479:GLU:HB3	1.90	0.53
1:A:135:ASN:O	1:A:139:VAL:HG23	2.09	0.53
2:B:86:VAL:HB	2:B:94:GLU:HB2	1.90	0.52
2:B:120:THR:HG21	2:B:162:CYS:HA	1.90	0.52
1:A:367:LEU:HD11	1:A:431:GLU:HB2	1.91	0.52
1:C:542:THR:OG1	1:C:543:VAL:N	2.42	0.52
1:C:369:ASN:OD1	1:C:405:TRP:NE1	2.35	0.52
2:D:264:ILE:HG22	2:D:270:VAL:HG22	1.92	0.52
1:A:595:CYS:H	1:A:615:SER:HB3	1.74	0.51
2:B:22:GLY:N	2:B:35:ALA:O	2.33	0.51
1:A:542:THR:OG1	1:A:543:VAL:N	2.43	0.51
2:D:85:LEU:HB3	2:D:121:LEU:HD11	1.92	0.51
1:A:218:LEU:HB3	1:A:256:LEU:HD11	1.93	0.50
2:B:85:LEU:HD12	2:B:123:VAL:HG22	1.93	0.50
1:A:25:LEU:HD11	1:A:68:LEU:HD21	1.93	0.50

Continued on next page...

Continued from previous page...

Atom-1	Atom-2	Interatomic distance (Å)	Clash overlap (Å)
1:C:119:ILE:HD12	1:C:148:MSE:HE1	1.93	0.50
2:B:126:ASP:OD2	2:B:128:THR:OG1	2.26	0.50
2:D:184:LEU:HD22	2:D:232:ILE:HD13	1.93	0.50
2:D:21:ILE:HG21	2:D:34:LEU:HD21	1.93	0.50
1:C:40:ILE:HD12	1:C:108:PHE:HD2	1.75	0.50
1:C:301:GLU:O	1:C:504:ASN:ND2	2.38	0.49
1:A:164:GLU:HG3	2:B:191:LYS:HB2	1.93	0.49
2:D:34:LEU:HD13	2:D:306:VAL:HG11	1.93	0.49
1:C:339:LYS:NZ	1:C:558:ASP:OD2	2.45	0.49
1:A:208:LEU:HD12	1:A:245:VAL:HG12	1.95	0.49
2:D:21:ILE:CG2	2:D:34:LEU:HD21	2.42	0.49
2:D:21:ILE:HG23	2:D:34:LEU:CD1	2.29	0.48
1:C:304:LEU:HD22	1:C:479:GLU:HG2	1.94	0.48
2:B:284:LEU:O	2:B:287:ARG:NH2	2.47	0.48
1:A:13:ARG:NH2	1:A:264:GLY:O	2.46	0.48
1:A:20:GLU:OE2	2:B:43:THR:OG1	2.31	0.48
1:C:112:LEU:HB2	1:C:114:LEU:HD13	1.96	0.48
2:D:84:ILE:HD11	2:D:98:ILE:HD11	1.95	0.48
2:B:111:LYS:CE	2:B:147:LYS:O	2.62	0.48
2:B:120:THR:HG23	2:B:163:VAL:HG22	1.95	0.48
1:A:40:ILE:HG13	1:A:41:PHE:HD1	1.79	0.47
1:A:19:THR:OG1	1:A:20:GLU:N	2.47	0.47
1:A:417:ARG:HH22	1:A:633:LEU:HD22	1.78	0.47
2:D:32:LEU:HB3	2:D:51:PHE:HB2	1.97	0.47
1:A:118:LEU:HD11	1:A:226:PHE:HZ	1.78	0.47
2:B:265:SER:OG	2:B:266:GLU:N	2.47	0.47
1:A:31:GLN:NE2	1:A:272:ASP:OD2	2.39	0.47
1:C:279:TYR:O	1:C:283:LEU:HG	2.14	0.47
1:C:204:ILE:HG23	1:C:208:LEU:HD21	1.97	0.46
1:A:501:ARG:NH1	1:A:502:LEU:H	2.13	0.46
2:B:256:HIS:HE2	2:B:300:HIS:HB3	1.79	0.46
2:B:260:PHE:CD2	2:B:274:ASP:HA	2.51	0.46
2:B:55:GLU:O	2:B:59:ASN:ND2	2.48	0.46
1:A:235:ASN:OD1	1:A:236:LYS:N	2.43	0.46
1:C:595:CYS:H	1:C:615:SER:HB3	1.80	0.46
2:D:84:ILE:N	2:D:96:TRP:O	2.47	0.46
1:A:210:SER:HB3	1:A:213:VAL:HG23	1.97	0.46
1:C:301:GLU:HA	1:C:501:ARG:HG3	1.98	0.46
1:A:384:VAL:HB	1:A:409:VAL:HG22	1.97	0.46
1:C:417:ARG:HD3	1:C:445:CYS:HA	1.98	0.46
1:C:524:ASP:N	1:C:524:ASP:OD1	2.49	0.46

Continued on next page...

Continued from previous page...

Atom-1	Atom-2	Interatomic distance (Å)	Clash overlap (Å)
2:D:247:ASN:N	2:D:247:ASN:OD1	2.49	0.46
2:B:111:LYS:HE3	2:B:147:LYS:O	2.16	0.45
1:A:311:LEU:O	1:A:389:LYS:HE2	2.16	0.45
1:A:521:ASN:HD22	1:A:526:ILE:HG23	1.81	0.45
2:B:27:ARG:HH22	2:B:52:LYS:HE2	1.81	0.45
2:B:67:VAL:HG12	2:B:105:LEU:HD13	1.98	0.45
2:D:21:ILE:HG23	2:D:34:LEU:CG	2.46	0.45
2:D:141:VAL:HG13	2:D:150:LEU:HB2	1.99	0.45
2:B:195:ARG:NH1	2:B:197:ASP:OD2	2.50	0.45
2:D:86:VAL:HB	2:D:94:GLU:HB2	1.97	0.45
1:A:40:ILE:HD12	1:A:108:PHE:HD2	1.81	0.45
1:A:549:GLY:HA3	1:A:578:ILE:HG22	1.98	0.45
1:A:99:GLU:HG2	1:A:132:LEU:HD11	1.99	0.45
1:A:478:ASN:OD1	1:A:481:ARG:NH1	2.49	0.45
1:A:612:ALA:HB2	1:A:621:ILE:HA	1.98	0.45
2:B:223:GLU:HA	2:B:247:ASN:HA	1.98	0.45
2:D:272:VAL:HB	2:D:281:PHE:HB3	1.98	0.45
1:A:13:ARG:NH1	1:A:262:ILE:O	2.49	0.45
1:C:311:LEU:O	1:C:389:LYS:HE2	2.17	0.45
2:D:287:ARG:HD3	2:D:287:ARG:HA	1.72	0.44
2:D:120:THR:HG21	2:D:162:CYS:HA	1.98	0.44
1:A:295:MSE:CG	1:A:296:PHE:H	2.24	0.44
1:A:408:GLN:HG3	1:A:409:VAL:HG23	1.98	0.44
1:C:424:LYS:HB3	1:C:454:LYS:HG2	1.99	0.44
2:B:299:ASP:HB3	2:B:302:LYS:HB3	2.00	0.43
2:B:256:HIS:NE2	2:B:300:HIS:O	2.49	0.43
2:B:116:ASP:HB3	2:B:135:LYS:HB3	1.99	0.43
1:C:345:VAL:HG23	1:C:349:GLU:HB2	2.01	0.43
2:D:92:ALA:HB2	2:D:112:TYR:CD2	2.53	0.43
1:C:267:HIS:CD2	2:D:112:TYR:HB2	2.53	0.43
1:C:44:ARG:NH1	2:D:89:ASP:OD1	2.51	0.43
1:C:508:LEU:HD22	1:C:542:THR:HG21	2.01	0.43
1:A:334:GLN:HE21	1:A:373:ARG:HB2	1.84	0.43
1:C:208:LEU:HD11	1:C:246:HIS:HD2	1.84	0.43
1:C:244:LYS:O	1:C:248:ARG:HG3	2.19	0.43
1:C:408:GLN:HG3	1:C:409:VAL:HG23	1.99	0.43
2:B:126:ASP:OD1	2:B:126:ASP:N	2.52	0.42
1:A:297:ALA:HA	1:A:298:LYS:HA	1.76	0.42
1:A:204:ILE:HG23	1:A:208:LEU:HD21	2.01	0.42
1:A:162:LEU:HD13	2:B:153:TYR:HD1	1.84	0.42
2:D:126:ASP:OD1	2:D:128:THR:OG1	2.26	0.42

Continued on next page...

Continued from previous page...

Atom-1	Atom-2	Interatomic distance (Å)	Clash overlap (Å)
2:B:211:HIS:CE1	2:B:214:LYS:HE2	2.55	0.42
2:B:70:GLU:CD	2:B:112:TYR:HH	2.22	0.42
1:C:201:ALA:HB1	1:C:226:PHE:HE1	1.84	0.42
2:D:108:LYS:HD3	2:D:108:LYS:HA	1.85	0.42
2:D:33:LEU:HB2	2:D:78:TRP:CZ2	2.55	0.42
1:C:455:ASP:OD1	1:C:455:ASP:N	2.51	0.42
1:A:345:VAL:HA	1:A:346:PRO:HD3	1.82	0.41
1:C:441:LEU:HD11	1:C:607:VAL:HB	2.01	0.41
2:B:274:ASP:OD1	2:B:278:SER:N	2.41	0.41
2:B:27:ARG:O	2:B:28:ARG:HB2	2.21	0.41
1:A:349:GLU:HA	1:A:352:THR:HG22	2.01	0.41
1:C:549:GLY:HA3	1:C:578:ILE:HG22	2.02	0.41
2:D:296:SER:HA	2:D:297:PRO:HD3	1.89	0.41
1:C:417:ARG:HH22	1:C:633:LEU:HD13	1.85	0.41
2:D:21:ILE:CG2	2:D:34:LEU:CG	2.96	0.41
1:C:40:ILE:HG13	1:C:41:PHE:HD1	1.86	0.41
1:C:42:HIS:HB3	1:C:45:PHE:HB2	2.03	0.41
1:C:108:PHE:O	1:C:112:LEU:HG	2.20	0.41
1:C:301:GLU:HB3	1:C:503:HIS:CE1	2.56	0.41
1:C:349:GLU:HB3	1:C:353:ASN:HB2	2.03	0.41
1:C:612:ALA:HB2	1:C:621:ILE:HA	2.02	0.41
1:A:297:ALA:HB1	1:A:298:LYS:HB3	2.02	0.40
1:A:338:TYR:HD1	1:A:378:ALA:HB2	1.85	0.40
1:A:508:LEU:HD22	1:A:542:THR:HG21	2.03	0.40
1:A:57:ARG:NH2	2:B:288:ASP:OD1	2.54	0.40
2:D:111:LYS:HE3	2:D:111:LYS:N	2.35	0.40
1:A:196:LYS:HB2	1:A:196:LYS:HE2	1.82	0.40
1:C:390:ASN:HA	1:C:391:PRO:HD3	1.90	0.40
2:D:265:SER:OG	2:D:266:GLU:N	2.55	0.40
1:C:239:PHE:HA	1:C:240:PRO:HD3	1.93	0.40
2:D:120:THR:HG23	2:D:163:VAL:HG22	2.04	0.40

There are no symmetry-related clashes.

5.3 Torsion angles [i](#)

5.3.1 Protein backbone [i](#)

In the following table, the Percentiles column shows the percent Ramachandran outliers of the chain as a percentile score with respect to all X-ray entries followed by that with respect to entries of similar resolution.

The Analysed column shows the number of residues for which the backbone conformation was analysed, and the total number of residues.

Mol	Chain	Analysed	Favoured	Allowed	Outliers	Percentiles	
1	A	613/657 (93%)	579 (94%)	32 (5%)	2 (0%)	41	73
1	C	594/657 (90%)	568 (96%)	21 (4%)	5 (1%)	19	53
2	B	286/357 (80%)	268 (94%)	18 (6%)	0	100	100
2	D	301/357 (84%)	281 (93%)	19 (6%)	1 (0%)	41	73
All	All	1794/2028 (88%)	1696 (94%)	90 (5%)	8 (0%)	34	69

All (8) Ramachandran outliers are listed below:

Mol	Chain	Res	Type
1	C	379	GLU
2	D	29	ASP
1	C	9	VAL
1	C	140	GLY
1	C	565	PRO
1	A	366	PRO
1	C	366	PRO
1	A	139	VAL

5.3.2 Protein sidechains [i](#)

In the following table, the Percentiles column shows the percent sidechain outliers of the chain as a percentile score with respect to all X-ray entries followed by that with respect to entries of similar resolution.

The Analysed column shows the number of residues for which the sidechain conformation was analysed, and the total number of residues.

Mol	Chain	Analysed	Rotameric	Outliers	Percentiles	
1	A	550/568 (97%)	539 (98%)	11 (2%)	55	80
1	C	538/568 (95%)	533 (99%)	5 (1%)	78	91
2	B	248/298 (83%)	242 (98%)	6 (2%)	49	77
2	D	257/298 (86%)	249 (97%)	8 (3%)	40	71
All	All	1593/1732 (92%)	1563 (98%)	30 (2%)	57	81

All (30) residues with a non-rotameric sidechain are listed below:

Mol	Chain	Res	Type
1	A	45	PHE
1	A	114	LEU
1	A	129	LEU
1	A	141	HIS
1	A	294	GLU
1	A	295	MSE
1	A	388	GLU
1	A	431	GLU
1	A	552	ASN
1	A	558	ASP
1	A	625	THR
2	B	29	ASP
2	B	60	GLU
2	B	131	VAL
2	B	213	GLU
2	B	277	PHE
2	B	310	HIS
1	C	431	GLU
1	C	455	ASP
1	C	524	ASP
1	C	593	THR
1	C	625	THR
2	D	28	ARG
2	D	42	ARG
2	D	102	GLU
2	D	111	LYS
2	D	202	ASP
2	D	236	ASP
2	D	247	ASN
2	D	277	PHE

Some sidechains can be flipped to improve hydrogen bonding and reduce clashes. All (14) such sidechains are listed below:

Mol	Chain	Res	Type
1	A	61	GLN
1	A	259	GLN
1	A	334	GLN
2	B	129	GLN
2	B	211	HIS
2	B	239	GLN
1	C	246	HIS
1	C	259	GLN
1	C	266	HIS

Continued on next page...

Continued from previous page...

Mol	Chain	Res	Type
1	C	267	HIS
1	C	318	GLN
1	C	535	GLN
2	D	129	GLN
2	D	246	GLN

5.3.3 RNA [i](#)

There are no RNA molecules in this entry.

5.4 Non-standard residues in protein, DNA, RNA chains [i](#)

There are no non-standard protein/DNA/RNA residues in this entry.

5.5 Carbohydrates [i](#)

There are no carbohydrates in this entry.

5.6 Ligand geometry [i](#)

2 ligands are modelled in this entry.

In the following table, the Counts columns list the number of bonds (or angles) for which Mogul statistics could be retrieved, the number of bonds (or angles) that are observed in the model and the number of bonds (or angles) that are defined in the Chemical Component Dictionary. The Link column lists molecule types, if any, to which the group is linked. The Z score for a bond length (or angle) is the number of standard deviations the observed value is removed from the expected value. A bond length (or angle) with $|Z| > 2$ is considered an outlier worth inspection. RMSZ is the root-mean-square of all Z scores of the bond lengths (or angles).

Mol	Type	Chain	Res	Link	Bond lengths			Bond angles		
					Counts	RMSZ	$\# Z > 2$	Counts	RMSZ	$\# Z > 2$
3	SAH	C	701	-	21,28,28	1.05	1 (4%)	20,40,40	1.41	3 (15%)
3	SAH	A	701	-	21,28,28	1.06	1 (4%)	20,40,40	1.42	3 (15%)

In the following table, the Chirals column lists the number of chiral outliers, the number of chiral centers analysed, the number of these observed in the model and the number defined in the Chemical Component Dictionary. Similar counts are reported in the Torsion and Rings columns. '–' means no outliers of that kind were identified.

Mol	Type	Chain	Res	Link	Chirals	Torsions	Rings
3	SAH	C	701	-	-	0/7/31/31	0/3/3/3
3	SAH	A	701	-	-	0/7/31/31	0/3/3/3

All (2) bond length outliers are listed below:

Mol	Chain	Res	Type	Atoms	Z	Observed(Å)	Ideal(Å)
3	C	701	SAH	C5-C4	2.48	1.47	1.40
3	A	701	SAH	C5-C4	2.48	1.47	1.40

All (6) bond angle outliers are listed below:

Mol	Chain	Res	Type	Atoms	Z	Observed(°)	Ideal(°)
3	A	701	SAH	N3-C2-N1	-3.20	123.67	128.68
3	C	701	SAH	N3-C2-N1	-3.19	123.70	128.68
3	A	701	SAH	C4-C5-N7	-2.71	106.57	109.40
3	C	701	SAH	C4-C5-N7	-2.66	106.63	109.40
3	C	701	SAH	C3'-C2'-C1'	2.55	104.81	100.98
3	A	701	SAH	C3'-C2'-C1'	2.53	104.79	100.98

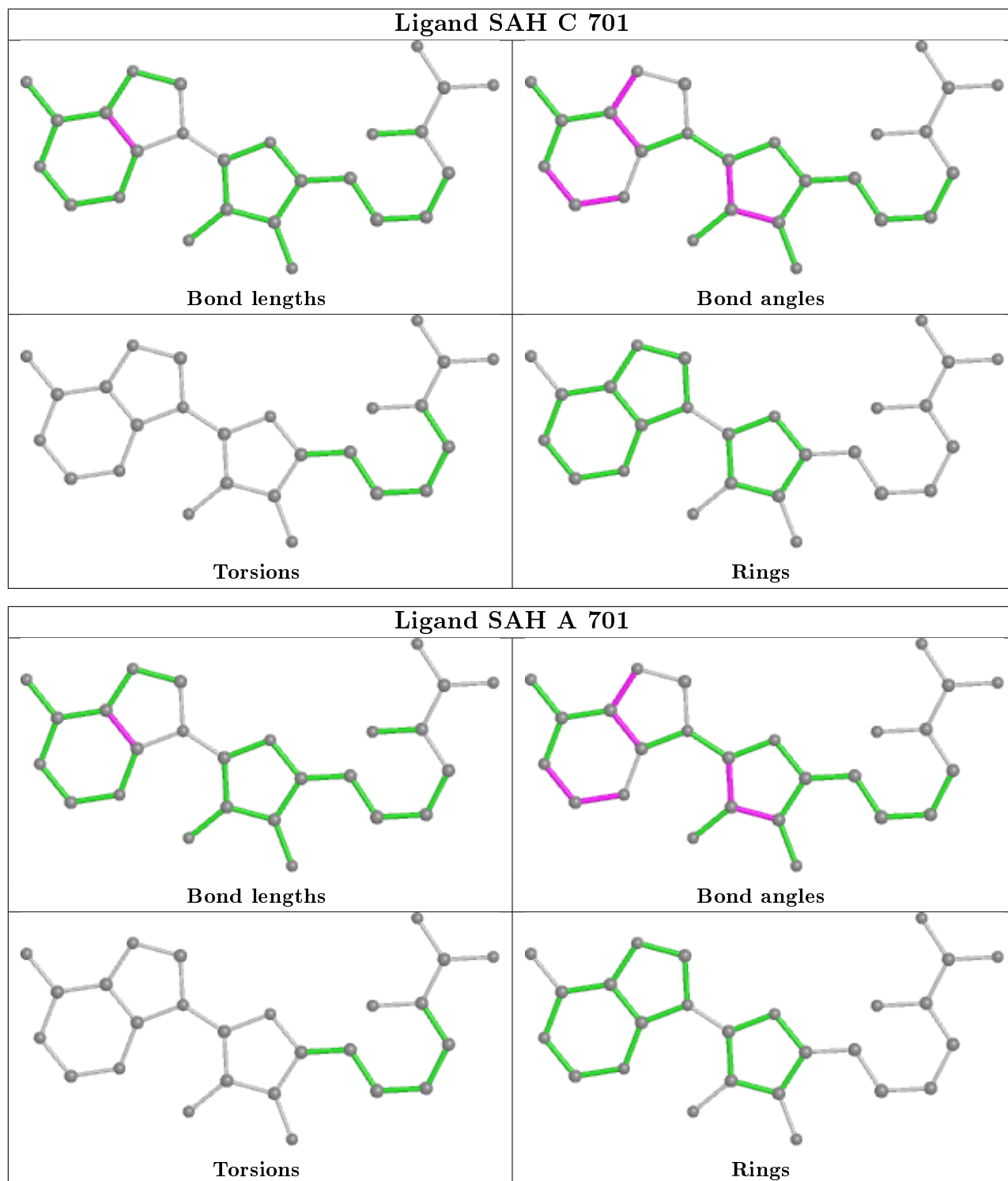
There are no chirality outliers.

There are no torsion outliers.

There are no ring outliers.

No monomer is involved in short contacts.

The following is a two-dimensional graphical depiction of Mogul quality analysis of bond lengths, bond angles, torsion angles, and ring geometry for all instances of the Ligand of Interest. In addition, ligands with molecular weight > 250 and outliers as shown on the validation Tables will also be included. For torsion angles, if less than 5% of the Mogul distribution of torsion angles is within 10 degrees of the torsion angle in question, then that torsion angle is considered an outlier. Any bond that is central to one or more torsion angles identified as an outlier by Mogul will be highlighted in the graph. For rings, the root-mean-square deviation (RMSD) between the ring in question and similar rings identified by Mogul is calculated over all ring torsion angles. If the average RMSD is greater than 60 degrees and the minimal RMSD between the ring in question and any Mogul-identified rings is also greater than 60 degrees, then that ring is considered an outlier. The outliers are highlighted in purple. The color gray indicates Mogul did not find sufficient equivalents in the CSD to analyse the geometry.



5.7 Other polymers [\(i\)](#)

There are no such residues in this entry.

5.8 Polymer linkage issues

There are no chain breaks in this entry.

6 Fit of model and data [i](#)

6.1 Protein, DNA and RNA chains [i](#)

In the following table, the column labelled ‘#RSRZ> 2’ contains the number (and percentage) of RSRZ outliers, followed by percent RSRZ outliers for the chain as percentile scores relative to all X-ray entries and entries of similar resolution. The OWAB column contains the minimum, median, 95th percentile and maximum values of the occupancy-weighted average B-factor per residue. The column labelled ‘Q< 0.9’ lists the number of (and percentage) of residues with an average occupancy less than 0.9.

Mol	Chain	Analysed	<RSRZ>	#RSRZ>2	OWAB(Å ²)	Q<0.9
1	A	604/657 (91%)	-0.12	8 (1%) 77 61	28, 55, 91, 139	0
1	C	590/657 (89%)	0.05	13 (2%) 62 45	33, 59, 98, 119	0
2	B	291/357 (81%)	0.86	37 (12%) 3 2	67, 86, 111, 128	0
2	D	302/357 (84%)	0.03	2 (0%) 87 76	42, 59, 84, 108	0
All	All	1787/2028 (88%)	0.12	60 (3%) 45 29	28, 62, 102, 139	0

All (60) RSRZ outliers are listed below:

Mol	Chain	Res	Type	RSRZ
2	B	199	CYS	6.3
2	B	215	ASP	4.2
1	C	285	GLN	4.2
2	B	257	SER	4.1
2	B	260	PHE	4.1
2	B	28	ARG	4.1
1	C	402	TYR	3.9
1	A	293	TYR	3.8
2	B	193	ALA	3.7
2	B	237	SER	3.7
2	B	197	ASP	3.5
1	C	141	HIS	3.4
1	C	286	ASN	3.4
1	A	298	LYS	3.2
2	B	258	SER	3.2
2	D	104	LEU	3.2
2	B	200	ALA	3.1
2	B	65	ALA	3.1
2	B	106	VAL	3.1
2	B	301	SER	3.0
2	B	16	CYS	2.9

Continued on next page...

Continued from previous page...

Mol	Chain	Res	Type	RSRZ
1	C	287	SER	2.9
1	C	379	GLU	2.8
1	A	8	ARG	2.8
2	B	55	GLU	2.8
1	A	297	ALA	2.8
1	A	82	SER	2.7
2	B	261	LEU	2.7
2	B	64	THR	2.7
1	C	302	ASP	2.7
2	B	234	ASN	2.7
1	A	141	HIS	2.7
2	B	27	ARG	2.6
2	B	236	ASP	2.6
2	B	80	SER	2.6
1	C	251	PHE	2.5
1	C	455	ASP	2.5
1	A	299	GLY	2.5
1	C	568	HIS	2.5
2	B	214	LYS	2.5
2	B	63	CYS	2.3
2	D	199	CYS	2.3
2	B	108	LYS	2.3
2	B	169	LYS	2.3
2	B	230	VAL	2.3
2	B	282	ARG	2.3
2	B	232	ILE	2.2
1	C	282	TYR	2.2
1	C	249	LEU	2.2
1	C	522	LYS	2.2
2	B	294	ALA	2.2
1	A	291	ASN	2.2
2	B	263	SER	2.1
2	B	195	ARG	2.1
2	B	317	LEU	2.1
2	B	233	LYS	2.1
2	B	171	THR	2.0
2	B	303	PHE	2.0
2	B	216	ASP	2.0
2	B	276	ASP	2.0

6.2 Non-standard residues in protein, DNA, RNA chains [i](#)

There are no non-standard protein/DNA/RNA residues in this entry.

6.3 Carbohydrates [i](#)

There are no carbohydrates in this entry.

6.4 Ligands [i](#)

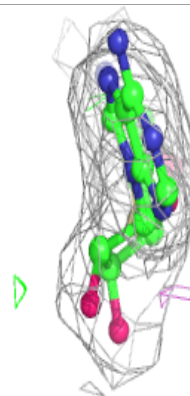
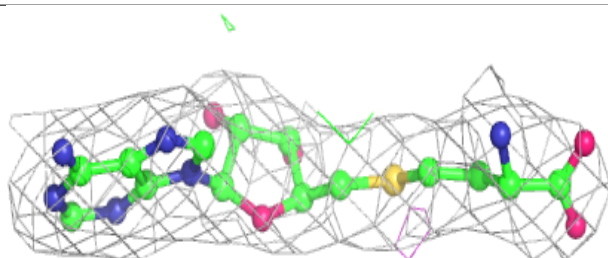
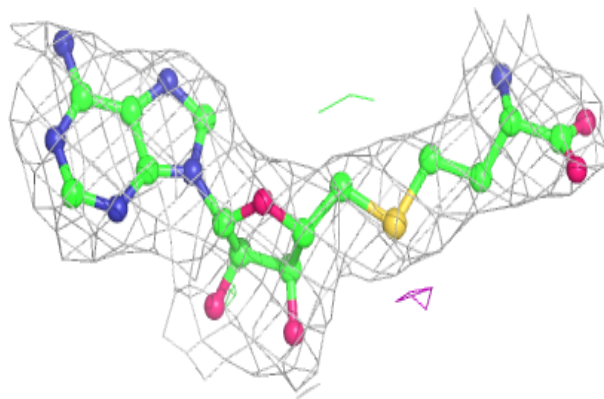
In the following table, the Atoms column lists the number of modelled atoms in the group and the number defined in the chemical component dictionary. The B-factors column lists the minimum, median, 95th percentile and maximum values of B factors of atoms in the group. The column labelled 'Q< 0.9' lists the number of atoms with occupancy less than 0.9.

Mol	Type	Chain	Res	Atoms	RSCC	RSR	B-factors(\AA^2)	Q<0.9
3	SAH	C	701	26/26	0.96	0.17	39,53,63,68	0
3	SAH	A	701	26/26	0.96	0.15	30,38,50,67	0

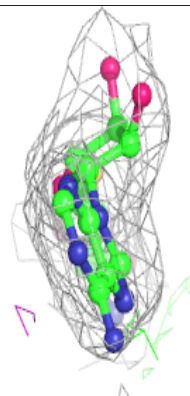
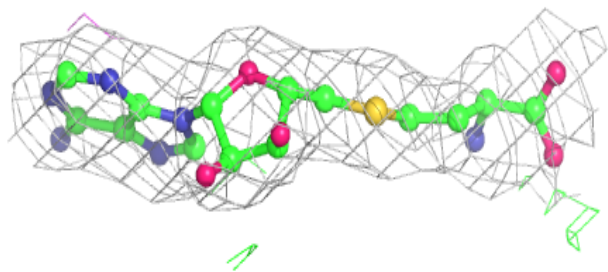
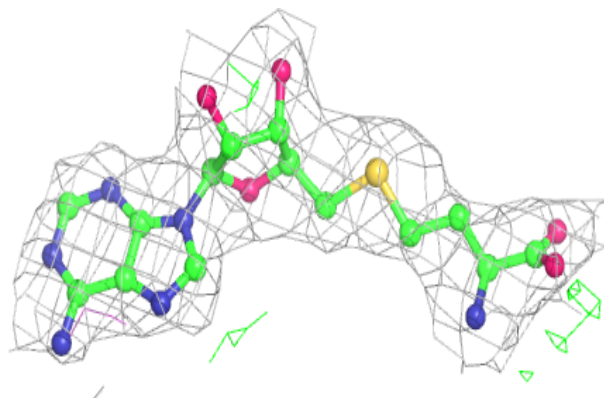
The following is a graphical depiction of the model fit to experimental electron density of all instances of the Ligand of Interest. In addition, ligands with molecular weight > 250 and outliers as shown on the geometry validation Tables will also be included. Each fit is shown from different orientation to approximate a three-dimensional view.

Electron density around SAH C 701:

$2mF_o-DF_c$ (at 0.7 rmsd) in gray
 mF_o-DF_c (at 3 rmsd) in purple (negative)
and green (positive)

**Electron density around SAH A 701:**

$2mF_o-DF_c$ (at 0.7 rmsd) in gray
 mF_o-DF_c (at 3 rmsd) in purple (negative)
and green (positive)



6.5 Other polymers

There are no such residues in this entry.