



wwPDB X-ray Structure Validation Summary Report ⓘ

May 14, 2020 – 03:19 pm BST

PDB ID : 6GAH
Title : BACTERIORHODOPSIN, 680 FS STATE, REAL-SPACE REFINED AGAINST 15% EXTRAPOLATED STRUCTURE FACTORS
Authors : Nass Kovacs, G.; Colletier, J.-P.; Gruenbein, M.L.; Stensitzki, T.; Batyuk, A.; Carbajo, S.; Doak, R.B.; Ehrenberg, D.; Foucar, L.; Gasper, R.; Gorel, A.; Hilpert, M.; Kloos, M.; Koglin, J.; Reinstein, J.; Roome, C.M.; Schlesinger, R.; Seaberg, M.; Shoeman, R.L.; Stricker, M.; Boutet, S.; Haacke, S.; Heberle, J.; Domratcheva, T.; Schlichting, I.
Deposited on : 2018-04-11
Resolution : 1.80 Å(reported)

This is a wwPDB X-ray Structure Validation Summary Report for a publicly released PDB entry.

We welcome your comments at validation@mail.wwpdb.org

A user guide is available at

<https://www.wwpdb.org/validation/2017/XrayValidationReportHelp>

with specific help available everywhere you see the ⓘ symbol.

The following versions of software and data (see [references ⓘ](#)) were used in the production of this report:

MolProbity : 4.02b-467
Mogul : 1.8.5 (274361), CSD as541be (2020)
Xtriage (Phenix) : 1.13
EDS : 2.11
buster-report : 1.1.7 (2018)
Percentile statistics : 20191225.v01 (using entries in the PDB archive December 25th 2019)
Refmac : 5.8.0158
CCP4 : 7.0.044 (Gargrove)
Ideal geometry (proteins) : Engh & Huber (2001)
Ideal geometry (DNA, RNA) : Parkinson et al. (1996)
Validation Pipeline (wwPDB-VP) : 2.11

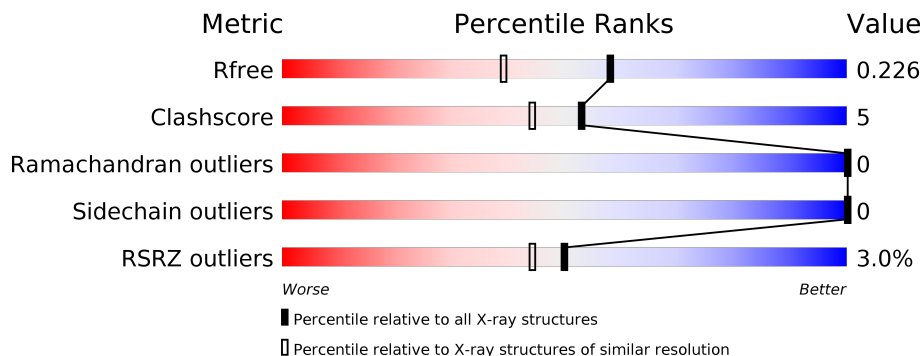
1 Overall quality at a glance

The following experimental techniques were used to determine the structure:

X-RAY DIFFRACTION

The reported resolution of this entry is 1.80 Å.

Percentile scores (ranging between 0-100) for global validation metrics of the entry are shown in the following graphic. The table shows the number of entries on which the scores are based.



Metric	Whole archive (#Entries)	Similar resolution (#Entries, resolution range(Å))
R_{free}	130704	5950 (1.80-1.80)
Clashscore	141614	6793 (1.80-1.80)
Ramachandran outliers	138981	6697 (1.80-1.80)
Sidechain outliers	138945	6696 (1.80-1.80)
RSRZ outliers	127900	5850 (1.80-1.80)

The table below summarises the geometric issues observed across the polymeric chains and their fit to the electron density. The red, orange, yellow and green segments on the lower bar indicate the fraction of residues that contain outliers for ≥ 3 , 2, 1 and 0 types of geometric quality criteria respectively. A grey segment represents the fraction of residues that are not modelled. The numeric value for each fraction is indicated below the corresponding segment, with a dot representing fractions $\leq 5\%$. The upper red bar (where present) indicates the fraction of residues that have poor fit to the electron density. The numeric value is given above the bar.

Mol	Chain	Length	Quality of chain
1	A	249	

2 Entry composition [i](#)

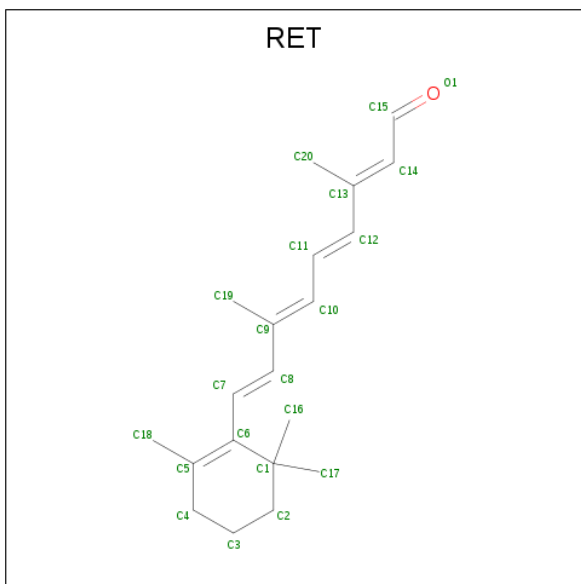
There are 12 unique types of molecules in this entry. The entry contains 3895 atoms, of which 0 are hydrogens and 0 are deuteriums.

In the tables below, the ZeroOcc column contains the number of atoms modelled with zero occupancy, the AltConf column contains the number of residues with at least one atom in alternate conformation and the Trace column contains the number of residues modelled with at most 2 atoms.

- Molecule 1 is a protein called Bacteriorhodopsin.

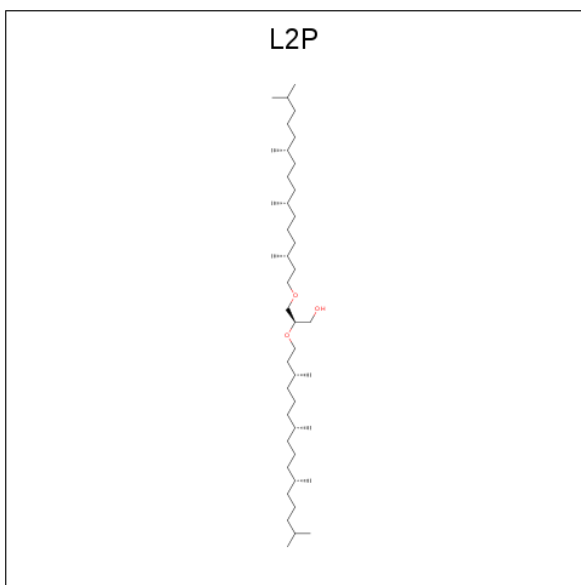
Mol	Chain	Residues	Atoms					ZeroOcc	AltConf	Trace
			Total	C	N	O	S			
1	A	231	3574	2398	544	614	18	0	231	0

- Molecule 2 is RETINAL (three-letter code: RET) (formula: $C_{20}H_{28}O$).



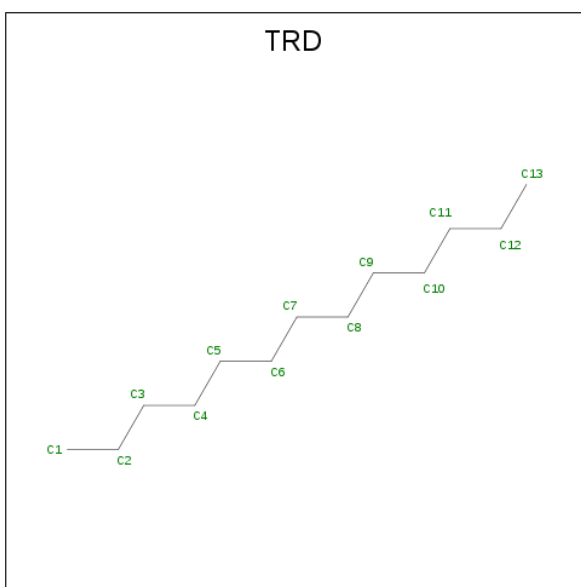
Mol	Chain	Residues	Atoms		ZeroOcc	AltConf
2	A	1	Total	C	0	1
			40	40		

- Molecule 3 is 2,3-DI-PHYTANYL-GLYCEROL (three-letter code: L2P) (formula: $C_{43}H_{88}O_3$).



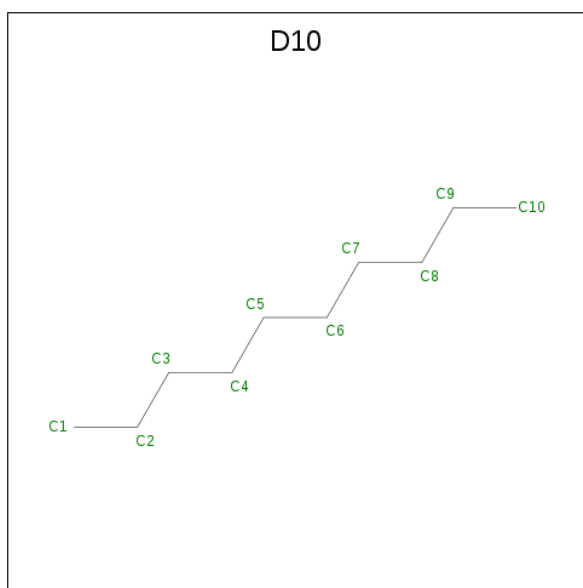
Mol	Chain	Residues	Atoms		ZeroOcc	AltConf
3	A	1	Total	C O	0	0
			25	23 2		
3	A	1	Total	C O	0	0
			22	21 1		
3	A	1	Total	C O	0	0
			46	43 3		

- Molecule 4 is TRIDECANE (three-letter code: TRD) (formula: C₁₃H₂₈).



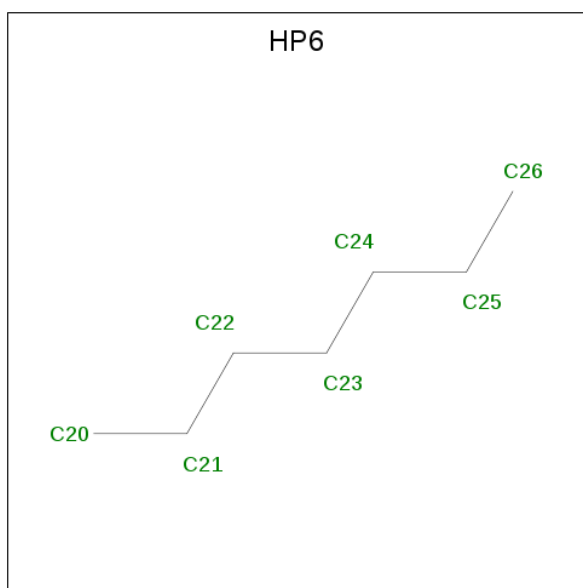
Mol	Chain	Residues	Atoms		ZeroOcc	AltConf
4	A	1	Total	C	0	0
			13	13		

- Molecule 5 is DECANE (three-letter code: D10) (formula: $C_{10}H_{22}$).



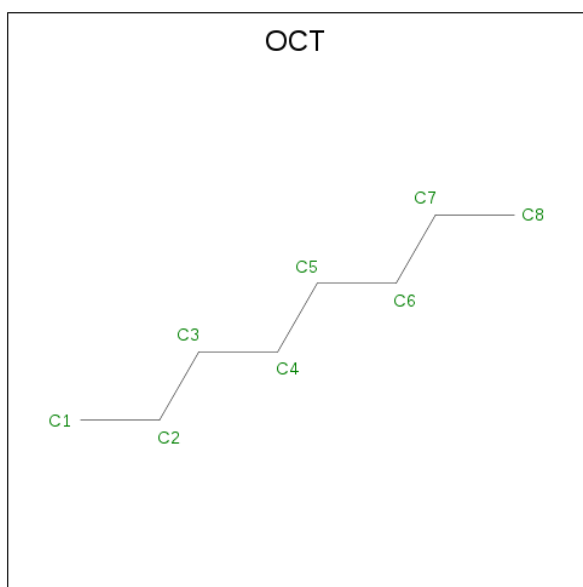
Mol	Chain	Residues	Atoms	ZeroOcc	AltConf
5	A	1	Total C 10 10	0	0

- Molecule 6 is HEPTANE (three-letter code: HP6) (formula: C_7H_{16}).



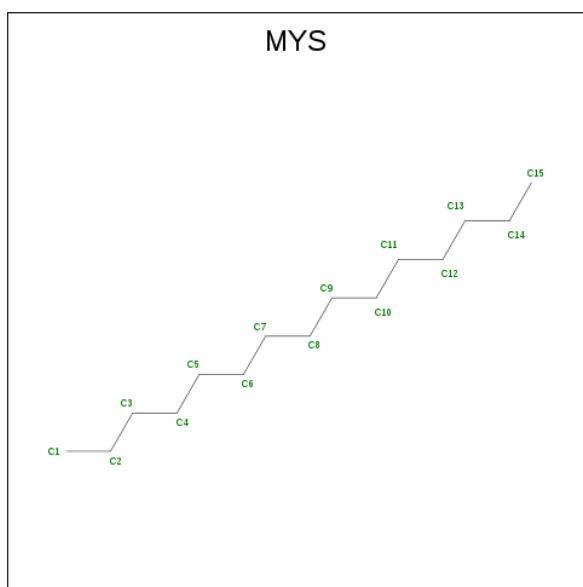
Mol	Chain	Residues	Atoms	ZeroOcc	AltConf
6	A	1	Total C 7 7	0	0

- Molecule 7 is N-OCTANE (three-letter code: OCT) (formula: C_8H_{18}).



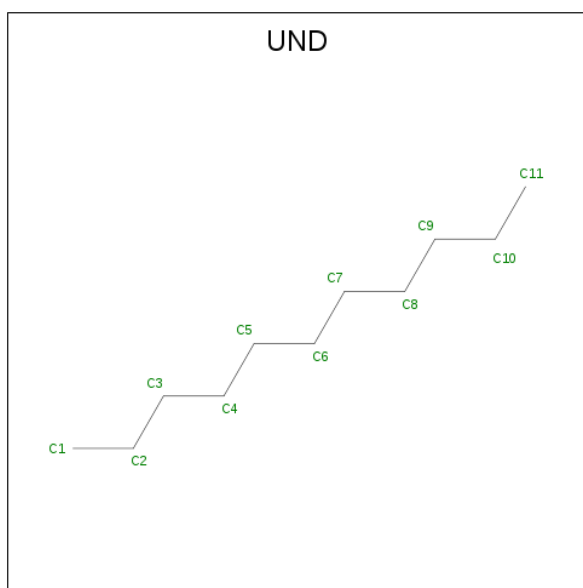
Mol	Chain	Residues	Atoms	ZeroOcc	AltConf
7	A	1	Total C 8 8	0	0
7	A	1	Total C 8 8	0	0
7	A	1	Total C 8 8	0	0

- Molecule 8 is PENTADECANE (three-letter code: MYS) (formula: $C_{15}H_{32}$).



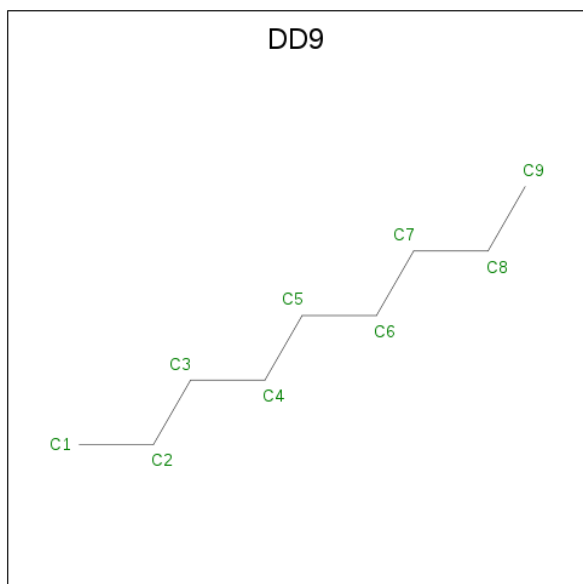
Mol	Chain	Residues	Atoms	ZeroOcc	AltConf
8	A	1	Total C 15 15	0	0

- Molecule 9 is UNDECANE (three-letter code: UND) (formula: $C_{11}H_{24}$).



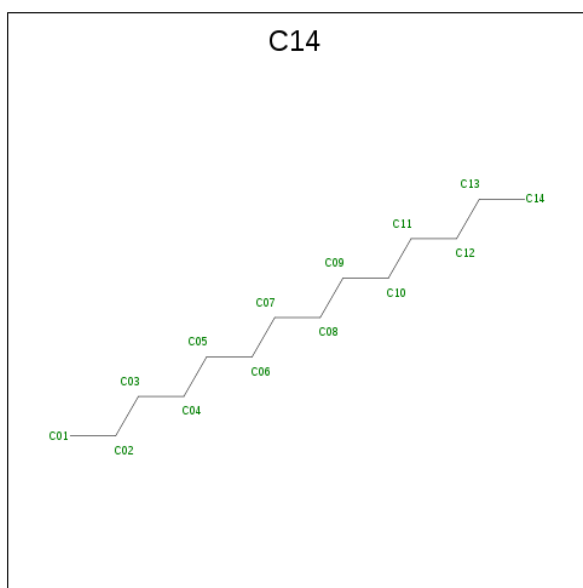
Mol	Chain	Residues	Atoms	ZeroOcc	AltConf
9	A	1	Total C 11 11	0	0
9	A	1	Total C 11 11	0	0

- Molecule 10 is nonane (three-letter code: DD9) (formula: C_9H_{20}).



Mol	Chain	Residues	Atoms	ZeroOcc	AltConf
10	A	1	Total C 9 9	0	0

- Molecule 11 is TETRADECANE (three-letter code: C14) (formula: C₁₄H₃₀).



Mol	Chain	Residues	Atoms	ZeroOcc	AltConf
11	A	1	Total C 14 14	0	0

- Molecule 12 is water.

Mol	Chain	Residues	Atoms	ZeroOcc	AltConf
12	A	38	Total O 74 74	0	36

4 Data and refinement statistics

Property	Value	Source
Space group	P 63	Depositor
Cell constants a, b, c, α , β , γ	62.10Å 62.10Å 110.50Å 90.00° 90.00° 120.00°	Depositor
Resolution (Å)	20.00 – 1.80 20.64 – 1.80	Depositor EDS
% Data completeness (in resolution range)	100.0 (20.00-1.80) 100.0 (20.64-1.80)	Depositor EDS
R_{merge}	(Not available)	Depositor
R_{sym}	(Not available)	Depositor
$\langle I/\sigma(I) \rangle$ ¹	1.32 (at 1.80Å)	Xtrriage
Refinement program	PHENIX dev_3063:	Depositor
R, R_{free}	0.203 , 0.226 0.203 , 0.226	Depositor DCC
R_{free} test set	1138 reflections (5.09%)	wwPDB-VP
Wilson B-factor (Å ²)	27.5	Xtrriage
Anisotropy	0.114	Xtrriage
Bulk solvent k_{sol} (e/Å ³), B_{sol} (Å ²)	0.23 , 83.0	EDS
L-test for twinning ²	$\langle L \rangle = 0.37$, $\langle L^2 \rangle = 0.20$	Xtrriage
Estimated twinning fraction	0.215 for h,-h-k,-l	Xtrriage
F_o, F_c correlation	0.95	EDS
Total number of atoms	3895	wwPDB-VP
Average B, all atoms (Å ²)	26.0	wwPDB-VP

Xtrriage's analysis on translational NCS is as follows: *The largest off-origin peak in the Patterson function is 3.99% of the height of the origin peak. No significant pseudotranslation is detected.*

¹Intensities estimated from amplitudes.

²Theoretical values of $\langle |L| \rangle$, $\langle L^2 \rangle$ for acentric reflections are 0.5, 0.333 respectively for untwinned datasets, and 0.375, 0.2 for perfectly twinned datasets.

5 Model quality [i](#)

5.1 Standard geometry [i](#)

Bond lengths and bond angles in the following residue types are not validated in this section: DD9, D10, MYS, HP6, RET, TRD, L2P, UND, OCT, C14

The Z score for a bond length (or angle) is the number of standard deviations the observed value is removed from the expected value. A bond length (or angle) with $|Z| > 5$ is considered an outlier worth inspection. RMSZ is the root-mean-square of all Z scores of the bond lengths (or angles).

Mol	Chain	Bond lengths		Bond angles	
		RMSZ	# Z >5	RMSZ	# Z >5
1	A	0.37	0/3670	0.50	0/5012

There are no bond length outliers.

There are no bond angle outliers.

There are no chirality outliers.

There are no planarity outliers.

5.2 Too-close contacts [i](#)

In the following table, the Non-H and H(model) columns list the number of non-hydrogen atoms and hydrogen atoms in the chain respectively. The H(added) column lists the number of hydrogen atoms added and optimized by MolProbity. The Clashes column lists the number of clashes within the asymmetric unit, whereas Symm-Clashes lists symmetry related clashes.

Mol	Chain	Non-H	H(model)	H(added)	Clashes	Symm-Clashes
1	A	3574	0	3681	31	0
2	A	40	0	54	4	0
3	A	93	0	172	17	0
4	A	13	0	28	1	0
5	A	10	0	22	1	0
6	A	7	0	16	0	0
7	A	24	0	54	3	0
8	A	15	0	32	0	0
9	A	22	0	48	1	0
10	A	9	0	20	0	0
11	A	14	0	30	0	0
12	A	74	0	0	3	0
All	All	3895	0	4157	43	0

The all-atom clashscore is defined as the number of clashes found per 1000 atoms (including hydrogen atoms). The all-atom clashscore for this structure is 5.

The worst 5 of 43 close contacts within the same asymmetric unit are listed below, sorted by their clash magnitude.

Atom-1	Atom-2	Interatomic distance (Å)	Clash overlap (Å)
1:A:157[A]:THR:OG1	1:A:175[A]:ARG:NH1	2.15	0.79
1:A:52[B]:ILE:HG23	3:A:311:L2P:H241	1.74	0.68
1:A:56[B]:MET:HE3	3:A:311:L2P:H212	1.77	0.67
1:A:158[A]:SER:O	12:A:401[A]:HOH:O	2.14	0.65
1:A:104[B]:ASP:OD2	12:A:402[B]:HOH:O	2.15	0.64

There are no symmetry-related clashes.

5.3 Torsion angles [i](#)

5.3.1 Protein backbone [i](#)

In the following table, the Percentiles column shows the percent Ramachandran outliers of the chain as a percentile score with respect to all X-ray entries followed by that with respect to entries of similar resolution.

The Analysed column shows the number of residues for which the backbone conformation was analysed, and the total number of residues.

Mol	Chain	Analysed	Favoured	Allowed	Outliers	Percentiles
1	A	458/249 (184%)	454 (99%)	4 (1%)	0	100 100

There are no Ramachandran outliers to report.

5.3.2 Protein sidechains [i](#)

In the following table, the Percentiles column shows the percent sidechain outliers of the chain as a percentile score with respect to all X-ray entries followed by that with respect to entries of similar resolution.

The Analysed column shows the number of residues for which the sidechain conformation was analysed, and the total number of residues.

Mol	Chain	Analysed	Rotameric	Outliers	Percentiles
1	A	370/195 (190%)	370 (100%)	0	100 100

There are no protein residues with a non-rotameric sidechain to report.

Some sidechains can be flipped to improve hydrogen bonding and reduce clashes. There are no such sidechains identified.

5.3.3 RNA [i](#)

There are no RNA molecules in this entry.

5.4 Non-standard residues in protein, DNA, RNA chains [i](#)

There are no non-standard protein/DNA/RNA residues in this entry.

5.5 Carbohydrates [i](#)

There are no carbohydrates in this entry.

5.6 Ligand geometry [i](#)

16 ligands are modelled in this entry.

In the following table, the Counts columns list the number of bonds (or angles) for which Mogul statistics could be retrieved, the number of bonds (or angles) that are observed in the model and the number of bonds (or angles) that are defined in the Chemical Component Dictionary. The Link column lists molecule types, if any, to which the group is linked. The Z score for a bond length (or angle) is the number of standard deviations the observed value is removed from the expected value. A bond length (or angle) with $|Z| > 2$ is considered an outlier worth inspection. RMSZ is the root-mean-square of all Z scores of the bond lengths (or angles).

Mol	Type	Chain	Res	Link	Bond lengths			Bond angles		
					Counts	RMSZ	$\# Z > 2$	Counts	RMSZ	$\# Z > 2$
8	MYS	A	308	-	14,14,14	0.09	0	13,13,13	0.85	0
2	RET	A	301[A]	1	20,20,21	0.77	0	27,27,28	1.35	5 (18%)
3	L2P	A	302	-	24,24,45	0.64	0	26,27,53	0.86	0
9	UND	A	309	-	10,10,10	0.12	0	9,9,9	0.81	0
2	RET	A	301[B]	1	20,20,21	0.64	0	27,27,28	1.72	7 (25%)
7	OCT	A	314	-	7,7,7	0.13	0	6,6,6	0.61	0
7	OCT	A	307	-	7,7,7	0.14	0	6,6,6	0.71	0
10	DD9	A	312	-	8,8,8	0.13	0	7,7,7	0.80	0
6	HP6	A	305	-	6,6,6	0.13	0	5,5,5	0.69	0
11	C14	A	313	-	13,13,13	0.10	0	12,12,12	0.82	0
5	D10	A	304	-	9,9,9	0.11	0	8,8,8	0.87	0
3	L2P	A	310	-	21,21,45	0.54	0	22,24,53	0.98	0

Mol	Type	Chain	Res	Link	Bond lengths			Bond angles		
					Counts	RMSZ	# Z > 2	Counts	RMSZ	# Z > 2
9	UND	A	315	-	10,10,10	0.13	0	9,9,9	0.73	0
7	OCT	A	306	-	7,7,7	0.13	0	6,6,6	0.72	0
4	TRD	A	303	-	12,12,12	0.12	0	11,11,11	0.79	0
3	L2P	A	311	-	45,45,45	0.62	0	51,53,53	0.94	4 (7%)

In the following table, the Chirals column lists the number of chiral outliers, the number of chiral centers analysed, the number of these observed in the model and the number defined in the Chemical Component Dictionary. Similar counts are reported in the Torsion and Rings columns. '-' means no outliers of that kind were identified.

Mol	Type	Chain	Res	Link	Chirals	Torsions	Rings
8	MYS	A	308	-	-	7/12/12/12	-
2	RET	A	301[A]	1	-	0/13/30/31	0/1/1/1
3	L2P	A	302	-	-	20/25/25/51	-
9	UND	A	309	-	-	1/8/8/8	-
2	RET	A	301[B]	1	-	2/13/30/31	0/1/1/1
7	OCT	A	314	-	-	2/5/5/5	-
7	OCT	A	307	-	-	0/5/5/5	-
10	DD9	A	312	-	-	2/6/6/6	-
6	HP6	A	305	-	-	0/4/4/4	-
11	C14	A	313	-	-	5/11/11/11	-
5	D10	A	304	-	-	5/7/7/7	-
3	L2P	A	310	-	-	11/22/22/51	-
9	UND	A	315	-	-	3/8/8/8	-
7	OCT	A	306	-	-	0/5/5/5	-
4	TRD	A	303	-	-	6/10/10/10	-
3	L2P	A	311	-	-	25/51/51/51	-

There are no bond length outliers.

The worst 5 of 16 bond angle outliers are listed below:

Mol	Chain	Res	Type	Atoms	Z	Observed(°)	Ideal(°)
2	A	301[B]	RET	C7-C6-C5	-3.49	113.01	121.46
2	A	301[B]	RET	C8-C9-C10	-3.46	113.63	118.94
2	A	301[A]	RET	C10-C11-C12	-3.16	113.37	123.22
2	A	301[B]	RET	C1-C6-C7	3.11	124.57	115.78
2	A	301[B]	RET	C19-C9-C8	2.93	122.69	118.08

There are no chirality outliers.

5 of 89 torsion outliers are listed below:

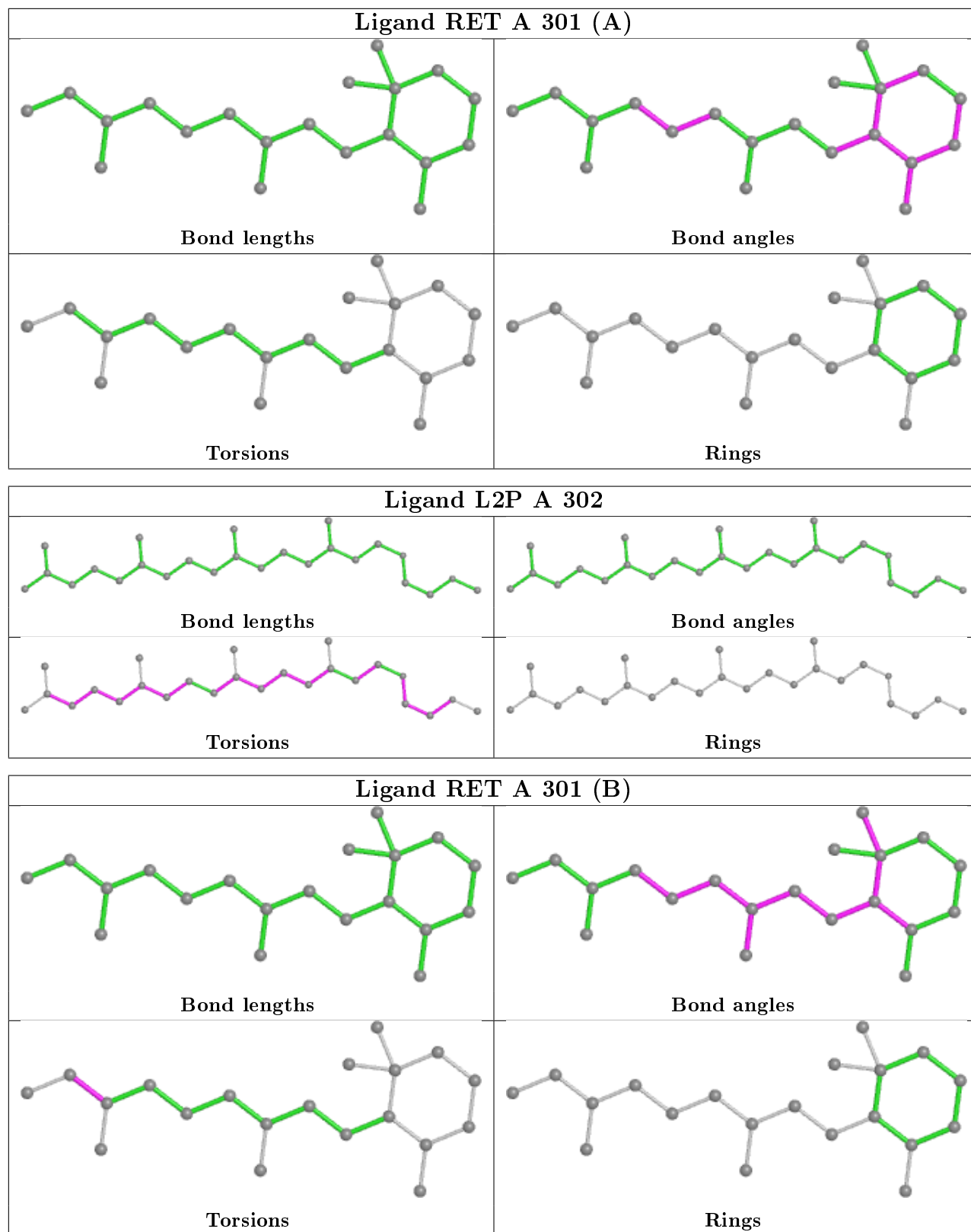
Mol	Chain	Res	Type	Atoms
3	A	302	L2P	C54-C53-C55-C56
2	A	301[B]	RET	C12-C13-C14-C15
2	A	301[B]	RET	C20-C13-C14-C15
3	A	311	L2P	C42-C41-O2-C2
3	A	311	L2P	C41-C42-C43-C44

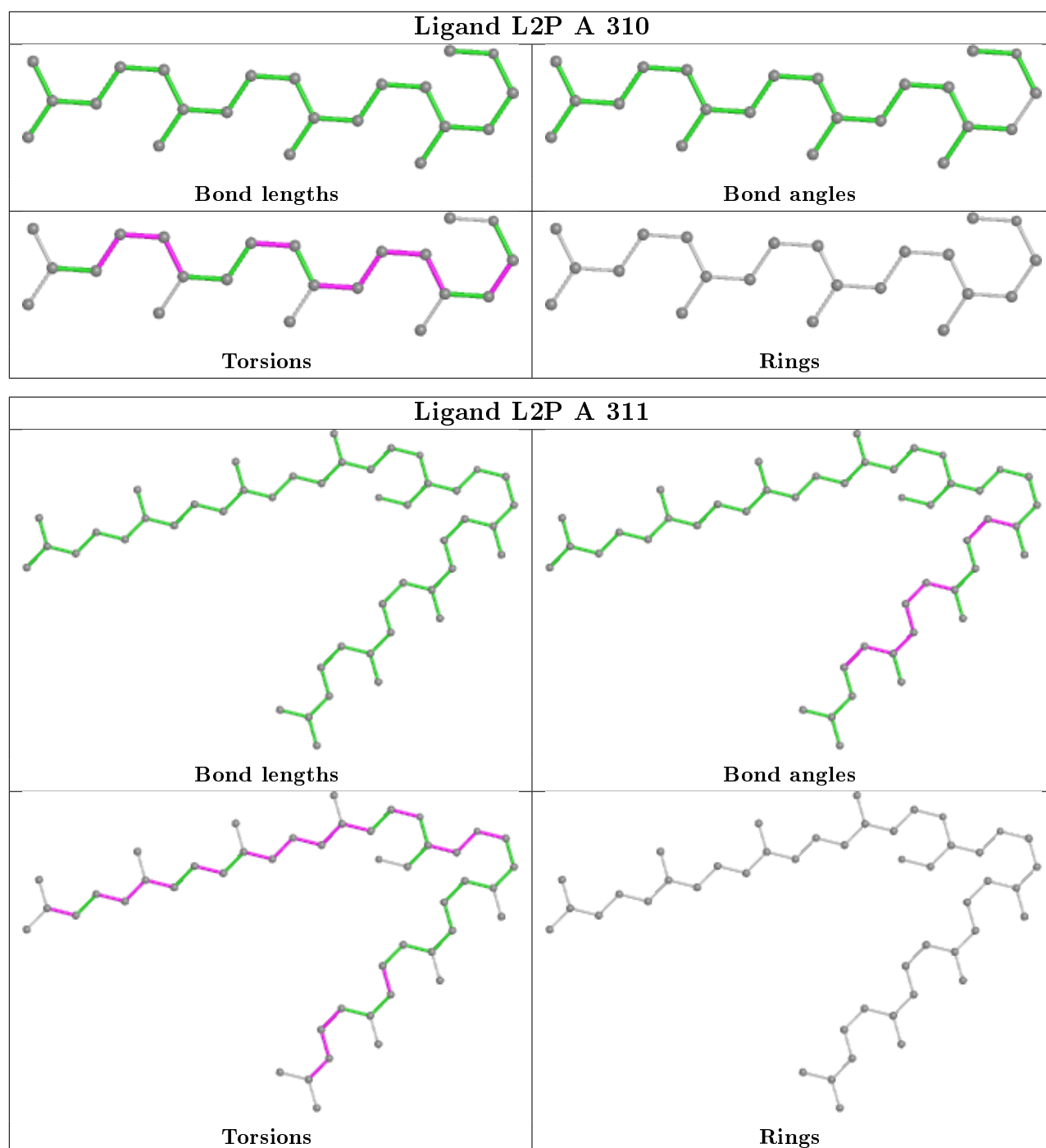
There are no ring outliers.

10 monomers are involved in 27 short contacts:

Mol	Chain	Res	Type	Clashes	Symm-Clashes
2	A	301[A]	RET	3	0
3	A	302	L2P	5	0
2	A	301[B]	RET	1	0
7	A	314	OCT	1	0
5	A	304	D10	1	0
3	A	310	L2P	3	0
9	A	315	UND	1	0
7	A	306	OCT	2	0
4	A	303	TRD	1	0
3	A	311	L2P	9	0

The following is a two-dimensional graphical depiction of Mogul quality analysis of bond lengths, bond angles, torsion angles, and ring geometry for all instances of the Ligand of Interest. In addition, ligands with molecular weight > 250 and outliers as shown on the validation Tables will also be included. For torsion angles, if less than 5% of the Mogul distribution of torsion angles is within 10 degrees of the torsion angle in question, then that torsion angle is considered an outlier. Any bond that is central to one or more torsion angles identified as an outlier by Mogul will be highlighted in the graph. For rings, the root-mean-square deviation (RMSD) between the ring in question and similar rings identified by Mogul is calculated over all ring torsion angles. If the average RMSD is greater than 60 degrees and the minimal RMSD between the ring in question and any Mogul-identified rings is also greater than 60 degrees, then that ring is considered an outlier. The outliers are highlighted in purple. The color gray indicates Mogul did not find sufficient equivalents in the CSD to analyse the geometry.





5.7 Other polymers [\(i\)](#)

There are no such residues in this entry.

5.8 Polymer linkage issues [\(i\)](#)

There are no chain breaks in this entry.

6 Fit of model and data [i](#)

6.1 Protein, DNA and RNA chains [i](#)

In the following table, the column labelled '#RSRZ> 2' contains the number (and percentage) of RSRZ outliers, followed by percent RSRZ outliers for the chain as percentile scores relative to all X-ray entries and entries of similar resolution. The OWAB column contains the minimum, median, 95th percentile and maximum values of the occupancy-weighted average B-factor per residue. The column labelled 'Q< 0.9' lists the number of (and percentage) of residues with an average occupancy less than 0.9.

Mol	Chain	Analysed	<RSRZ>	#RSRZ>2	OWAB(Å ²)	Q<0.9
1	A	231/249 (92%)	-0.36	7 (3%) 50 44	19, 27, 48, 68	0

The worst 5 of 7 RSRZ outliers are listed below:

Mol	Chain	Res	Type	RSRZ
1	A	157[A]	THR	4.3
1	A	158[A]	SER	3.2
1	A	4[A]	ILE	3.0
1	A	156[A]	PHE	2.6
1	A	33[A]	GLY	2.4

6.2 Non-standard residues in protein, DNA, RNA chains [i](#)

There are no non-standard protein/DNA/RNA residues in this entry.

6.3 Carbohydrates [i](#)

There are no carbohydrates in this entry.

6.4 Ligands [i](#)

In the following table, the Atoms column lists the number of modelled atoms in the group and the number defined in the chemical component dictionary. The B-factors column lists the minimum, median, 95th percentile and maximum values of B factors of atoms in the group. The column labelled 'Q< 0.9' lists the number of atoms with occupancy less than 0.9.

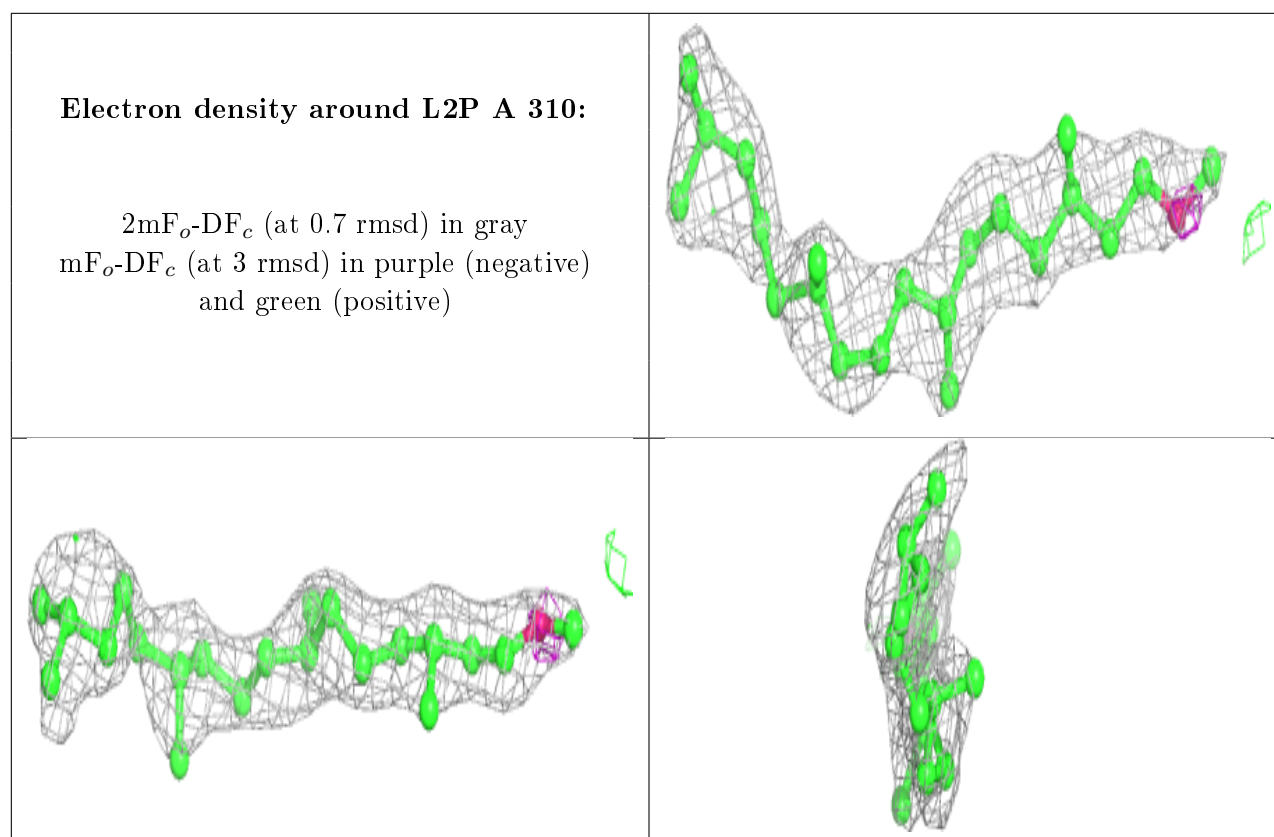
Mol	Type	Chain	Res	Atoms	RSCC	RSR	B-factors(Å ²)	Q<0.9
7	OCT	A	314	8/8	0.68	0.20	46,53,55,56	0
9	UND	A	315	11/11	0.69	0.16	46,52,55,56	0

Continued on next page...

Continued from previous page...

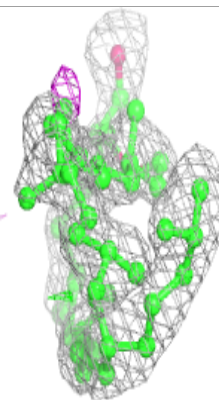
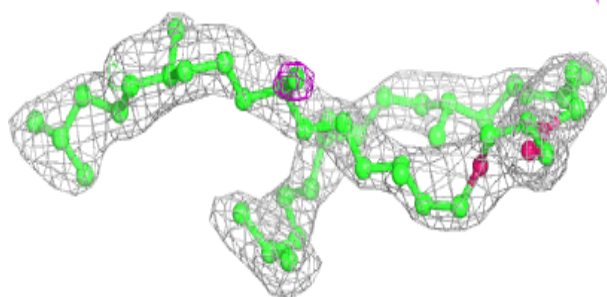
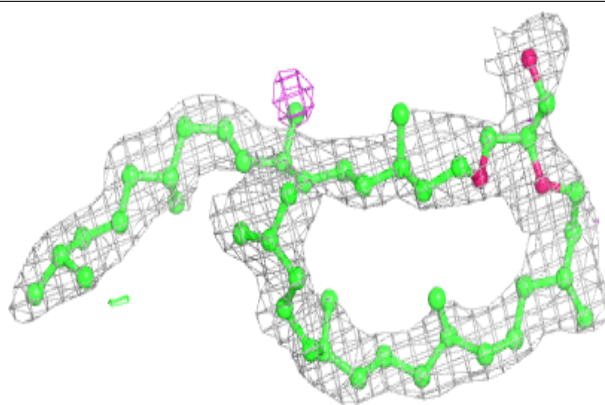
Mol	Type	Chain	Res	Atoms	RSCC	RSR	B-factors(\AA^2)	Q<0.9
7	OCT	A	306	8/8	0.74	0.20	43,47,48,50	0
4	TRD	A	303	13/13	0.77	0.14	44,48,53,55	0
7	OCT	A	307	8/8	0.78	0.18	43,47,51,52	0
11	C14	A	313	14/14	0.81	0.19	43,47,51,54	0
5	D10	A	304	10/10	0.82	0.13	43,47,54,56	0
3	L2P	A	310	22/46	0.85	0.20	42,47,52,53	0
3	L2P	A	311	46/46	0.86	0.19	37,48,53,55	0
9	UND	A	309	11/11	0.87	0.14	36,46,51,52	0
6	HP6	A	305	7/7	0.87	0.12	42,45,49,52	0
8	MYS	A	308	15/15	0.87	0.10	49,53,57,58	0
3	L2P	A	302	25/46	0.88	0.13	38,43,52,52	0
10	DD9	A	312	9/9	0.91	0.09	45,51,52,53	0
2	RET	A	301[B]	20/21	0.96	0.08	14,14,14,14	20
2	RET	A	301[A]	20/21	0.96	0.08	18,21,27,27	20

The following is a graphical depiction of the model fit to experimental electron density of all instances of the Ligand of Interest. In addition, ligands with molecular weight > 250 and outliers as shown on the geometry validation Tables will also be included. Each fit is shown from different orientation to approximate a three-dimensional view.

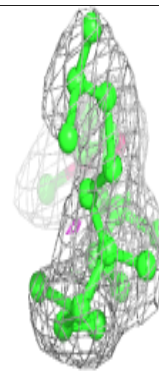
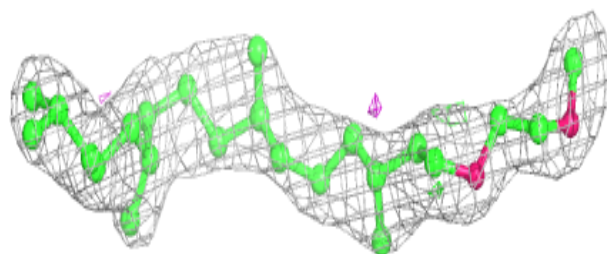
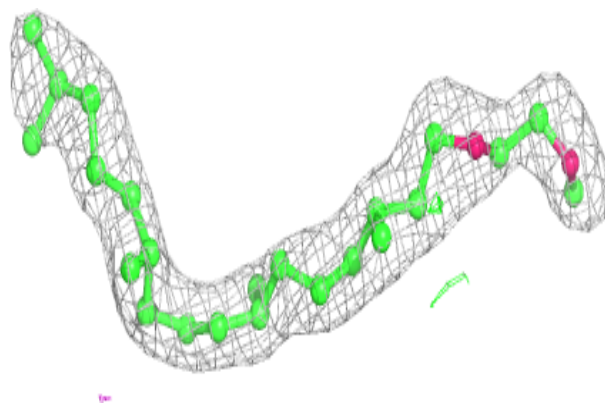


Electron density around L2P A 311:

$2mF_o-DF_c$ (at 0.7 rmsd) in gray
 mF_o-DF_c (at 3 rmsd) in purple (negative)
and green (positive)

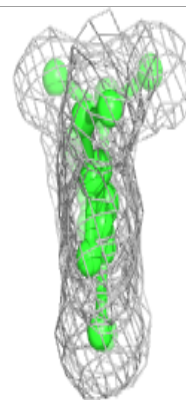
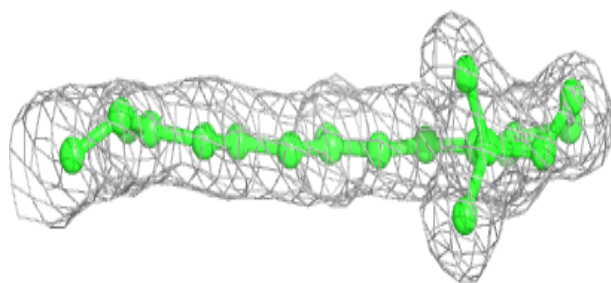
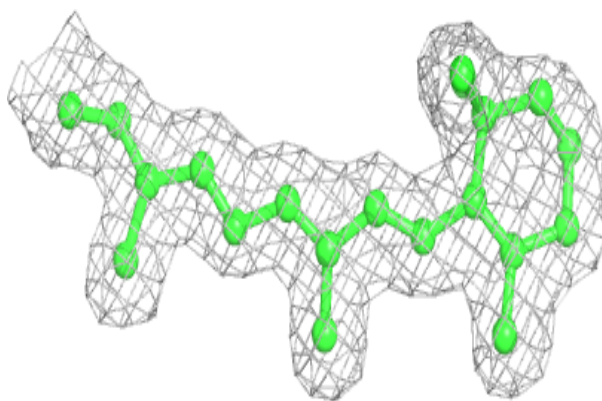
**Electron density around L2P A 302:**

$2mF_o-DF_c$ (at 0.7 rmsd) in gray
 mF_o-DF_c (at 3 rmsd) in purple (negative)
and green (positive)

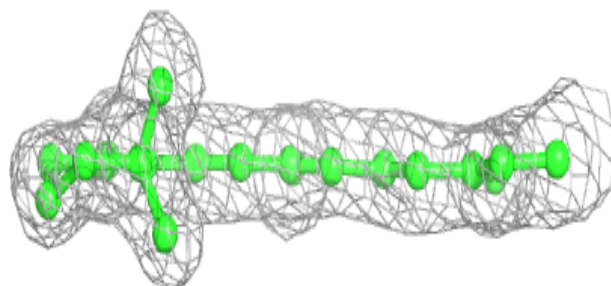
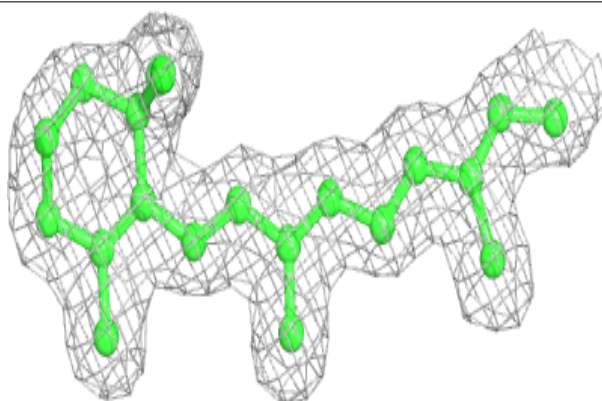


Electron density around RET A 301 (B):

$2mF_o-DF_c$ (at 0.7 rmsd) in gray
 mF_o-DF_c (at 3 rmsd) in purple (negative)
and green (positive)

**Electron density around RET A 301 (A):**

$2mF_o-DF_c$ (at 0.7 rmsd) in gray
 mF_o-DF_c (at 3 rmsd) in purple (negative)
and green (positive)



6.5 Other polymers

There are no such residues in this entry.