



Full wwPDB EM Validation Report ⓘ

Jul 6, 2023 – 06:24 PM EDT

PDB ID : 8GA8
EMDB ID : EMD-29892
Title : Structure of the yeast (HDAC) Rpd3L complex
Authors : Patel, A.B.; Radhakrishnan, I.; He, Y.
Deposited on : 2023-02-22
Resolution : 3.50 Å (reported)

This is a Full wwPDB EM Validation Report for a publicly released PDB entry.

We welcome your comments at validation@mail.wwpdb.org

A user guide is available at

<https://www.wwpdb.org/validation/2017/EMValidationReportHelp>

with specific help available everywhere you see the ⓘ symbol.

The types of validation reports are described at

<http://www.wwpdb.org/validation/2017/FAQs#types>.

The following versions of software and data (see [references ⓘ](#)) were used in the production of this report:

EMDB validation analysis : 0.0.1.dev50
MolProbity : 4.02b-467
Percentile statistics : 20191225.v01 (using entries in the PDB archive December 25th 2019)
MapQ : 1.9.9
Ideal geometry (proteins) : Engh & Huber (2001)
Ideal geometry (DNA, RNA) : Parkinson et al. (1996)
Validation Pipeline (wwPDB-VP) : 2.34

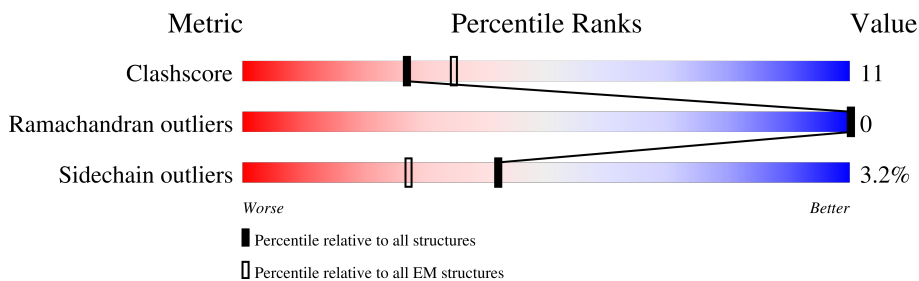
1 Overall quality at a glance i

The following experimental techniques were used to determine the structure:

ELECTRON MICROSCOPY

The reported resolution of this entry is 3.50 Å.

Percentile scores (ranging between 0-100) for global validation metrics of the entry are shown in the following graphic. The table shows the number of entries on which the scores are based.



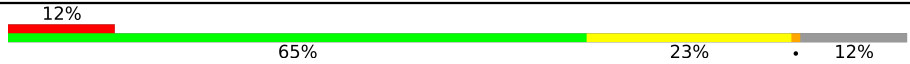

Metric	Whole archive (#Entries)	EM structures (#Entries)
Clashscore	158937	4297
Ramachandran outliers	154571	4023
Sidechain outliers	154315	3826

The table below summarises the geometric issues observed across the polymeric chains and their fit to the map. The red, orange, yellow and green segments of the bar indicate the fraction of residues that contain outliers for ≥ 3 , 2, 1 and 0 types of geometric quality criteria respectively. A grey segment represents the fraction of residues that are not modelled. The numeric value for each fraction is indicated below the corresponding segment, with a dot representing fractions $\leq 5\%$. The upper red bar (where present) indicates the fraction of residues that have poor fit to the EM map (all-atom inclusion $< 40\%$). The numeric value is given above the bar.

Mol	Chain	Length	Quality of chain
1	H	327	
2	A	1536	
2	D	1536	
3	J	201	
4	L	330	
5	M	430	
6	G	405	
7	B	433	

Continued on next page...

Continued from previous page...

Mol	Chain	Length	Quality of chain
7	E	433	
8	K	294	

2 Entry composition [i](#)

There are 9 unique types of molecules in this entry. The entry contains 22011 atoms, of which 0 are hydrogens and 0 are deuteriums.

In the tables below, the AltConf column contains the number of residues with at least one atom in alternate conformation and the Trace column contains the number of residues modelled with at most 2 atoms.

- Molecule 1 is a protein called Transcriptional regulatory protein SDS3.

Mol	Chain	Residues	Atoms					AltConf	Trace
			Total	C	N	O	S		
1	H	144	1206	749	222	234	1	0	0

- Molecule 2 is a protein called Transcriptional regulatory protein SIN3.

Mol	Chain	Residues	Atoms					AltConf	Trace
			Total	C	N	O	S		
2	A	525	4417	2838	749	815	15	0	0
2	D	503	4240	2731	724	772	13	0	0

- Molecule 3 is a protein called Transcriptional regulatory protein SAP30.

Mol	Chain	Residues	Atoms					AltConf	Trace
			Total	C	N	O	S		
3	J	90	767	486	142	138	1	0	0

- Molecule 4 is a protein called Transcriptional regulatory protein PHO23.

Mol	Chain	Residues	Atoms					AltConf	Trace
			Total	C	N	O	S		
4	L	129	1052	659	182	204	7	0	0

- Molecule 5 is a protein called Transcriptional regulatory protein RXT2.

Mol	Chain	Residues	Atoms					AltConf	Trace
			Total	C	N	O	S		
5	M	223	1832	1156	334	339	3	1	0

- Molecule 6 is a protein called Transcriptional regulatory protein DEP1.

Mol	Chain	Residues	Atoms					AltConf	Trace
6	G	97	Total	C	N	O	S	0	0
			838	527	155	154	2		

- Molecule 7 is a protein called Histone deacetylase RPD3.

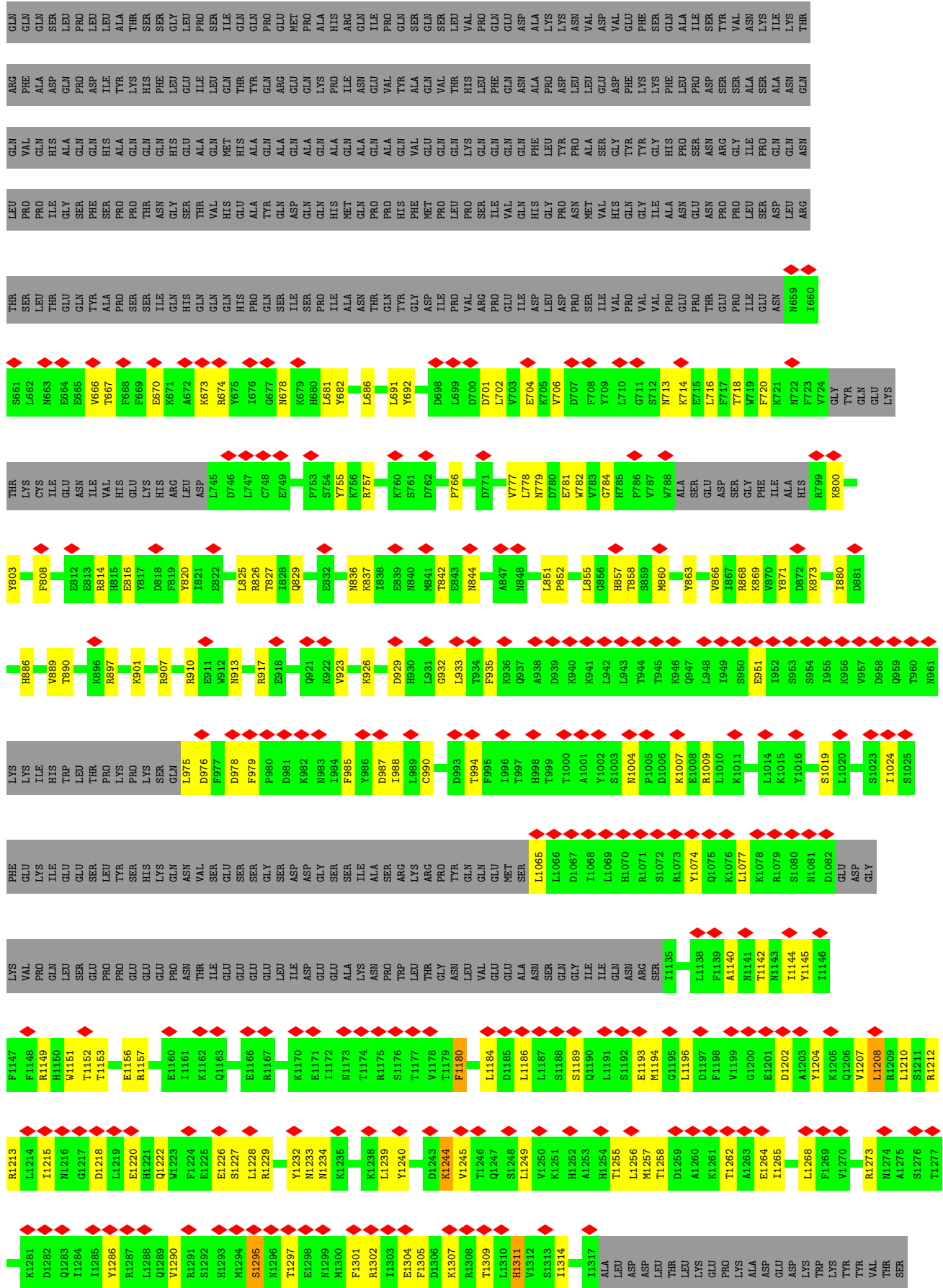
Mol	Chain	Residues	Atoms					AltConf	Trace
7	B	383	Total	C	N	O	S	0	0
			3039	1935	510	568	26		
7	E	382	Total	C	N	O	S	0	0
			3031	1930	509	567	25		

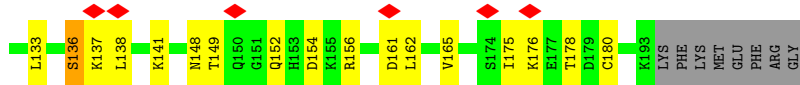
- Molecule 8 is a protein called Transcriptional regulatory protein RXT3.

Mol	Chain	Residues	Atoms					AltConf	Trace
8	K	199	Total	C	N	O	S	0	0
			1587	1012	268	305	2		

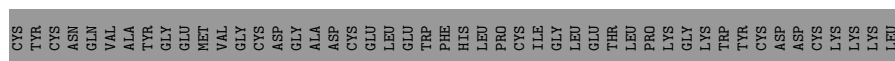
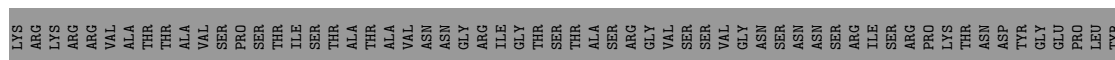
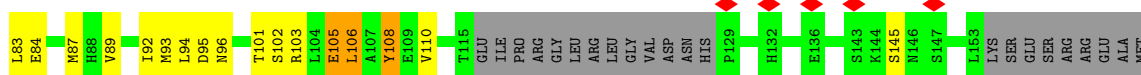
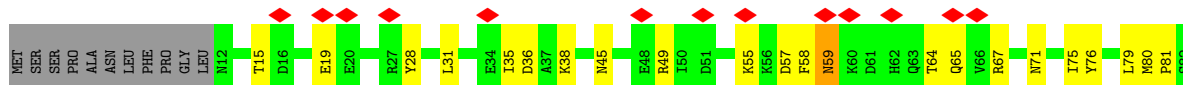
- Molecule 9 is ZINC ION (three-letter code: ZN) (formula: Zn) (labeled as "Ligand of Interest" by depositor).

Mol	Chain	Residues	Atoms		AltConf
9	B	1	Total	Zn	0
			1	1	
9	E	1	Total	Zn	0
			1	1	

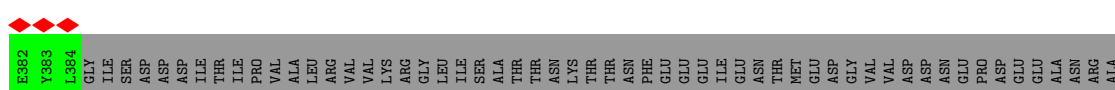
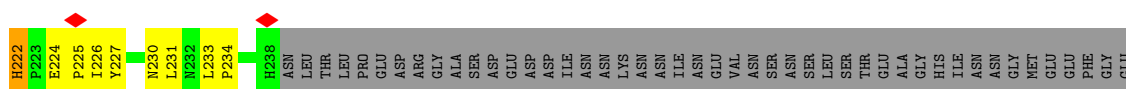
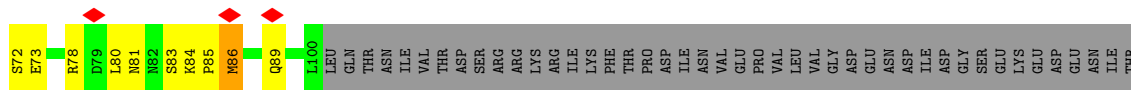
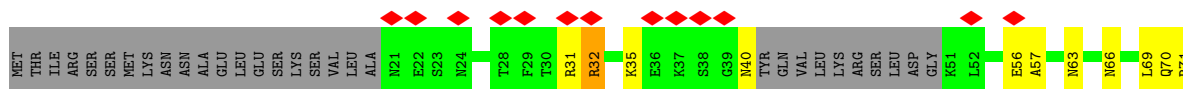
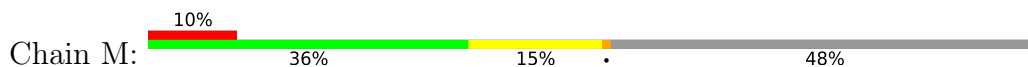




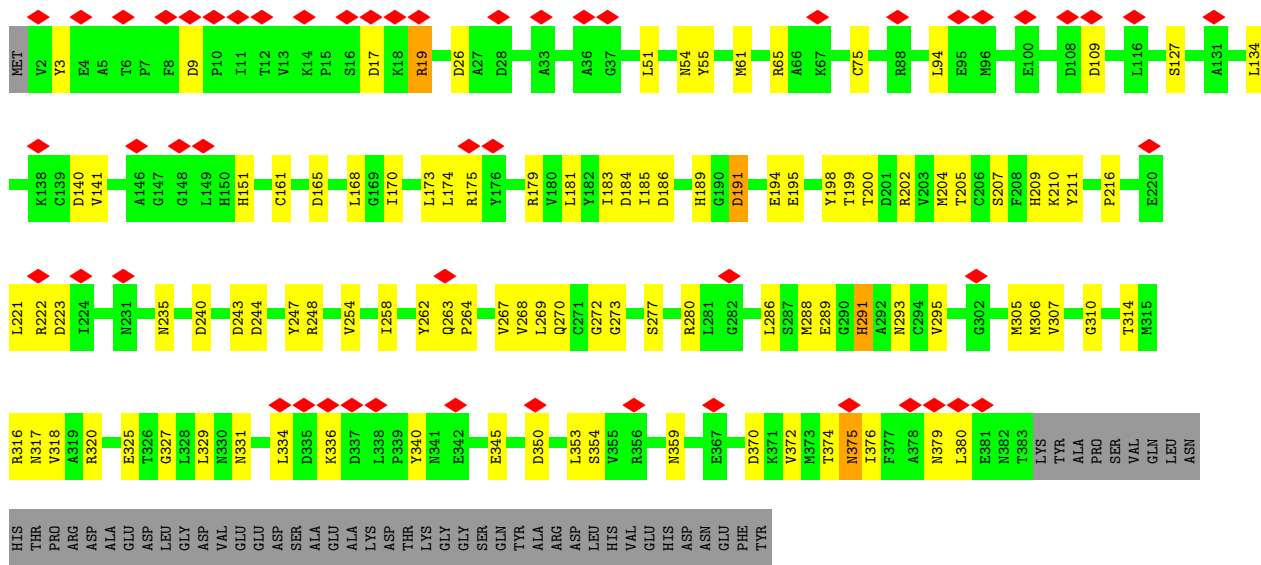
• Molecule 4: Transcriptional regulatory protein PHO23



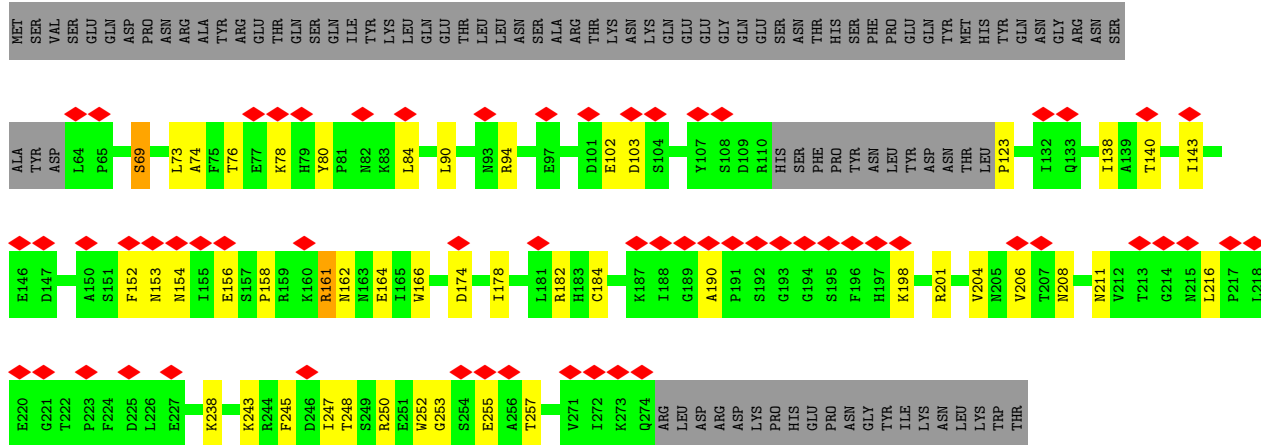
• Molecule 5: Transcriptional regulatory protein RXT2



• Molecule 6: Transcriptional regulatory protein DEP1



• Molecule 8: Transcriptional regulatory protein RXT3



4 Experimental information

Property	Value	Source
EM reconstruction method	SINGLE PARTICLE	Depositor
Imposed symmetry	POINT, Not provided	
Number of particles used	210993	Depositor
Resolution determination method	FSC 0.143 CUT-OFF	Depositor
CTF correction method	PHASE FLIPPING AND AMPLITUDE CORRECTION	Depositor
Microscope	FEI TITAN	Depositor
Voltage (kV)	300	Depositor
Electron dose ($e^-/\text{\AA}^2$)	1	Depositor
Minimum defocus (nm)	1000	Depositor
Maximum defocus (nm)	3000	Depositor
Magnification	Not provided	
Image detector	GATAN K3 (6k x 4k)	Depositor
Maximum map value	0.073	Depositor
Minimum map value	-0.040	Depositor
Average map value	0.000	Depositor
Map value standard deviation	0.001	Depositor
Recommended contour level	0.015	Depositor
Map size (\AA)	449.344, 449.344, 449.344	wwPDB
Map dimensions	272, 272, 272	wwPDB
Map angles ($^\circ$)	90.0, 90.0, 90.0	wwPDB
Pixel spacing (\AA)	1.652, 1.652, 1.652	Depositor

5 Model quality [i](#)

5.1 Standard geometry [i](#)

Bond lengths and bond angles in the following residue types are not validated in this section:
ZN

The Z score for a bond length (or angle) is the number of standard deviations the observed value is removed from the expected value. A bond length (or angle) with $|Z| > 5$ is considered an outlier worth inspection. RMSZ is the root-mean-square of all Z scores of the bond lengths (or angles).

Mol	Chain	Bond lengths		Bond angles	
		RMSZ	# Z >5	RMSZ	# Z >5
1	H	0.25	0/1222	0.52	0/1637
2	A	0.25	0/4509	0.48	0/6072
2	D	0.24	0/4333	0.46	0/5836
3	J	0.24	0/784	0.47	0/1050
4	L	0.26	0/1067	0.51	1/1434 (0.1%)
5	M	0.26	0/1856	0.52	0/2493
6	G	0.24	0/855	0.49	0/1153
7	B	0.27	0/3118	0.49	1/4220 (0.0%)
7	E	0.26	0/3110	0.48	0/4210
8	K	0.25	0/1626	0.47	0/2209
All	All	0.25	0/22480	0.48	2/30314 (0.0%)

There are no bond length outliers.

All (2) bond angle outliers are listed below:

Mol	Chain	Res	Type	Atoms	Z	Observed(°)	Ideal(°)
7	B	111	PRO	CA-N-CD	-5.73	103.47	111.50
4	L	106	LEU	CA-CB-CG	5.22	127.31	115.30

There are no chirality outliers.

There are no planarity outliers.

5.2 Too-close contacts [i](#)

In the following table, the Non-H and H(model) columns list the number of non-hydrogen atoms and hydrogen atoms in the chain respectively. The H(added) column lists the number of hydrogen atoms added and optimized by MolProbity. The Clashes column lists the number of clashes within the asymmetric unit, whereas Symm-Clashes lists symmetry-related clashes.

Mol	Chain	Non-H	H(model)	H(added)	Clashes	Symm-Clashes
1	H	1206	0	1210	34	0
2	A	4417	0	4398	110	0
2	D	4240	0	4237	104	0
3	J	767	0	759	23	0
4	L	1052	0	1060	26	0
5	M	1832	0	1888	51	0
6	G	838	0	820	16	0
7	B	3039	0	2919	79	0
7	E	3031	0	2907	68	0
8	K	1587	0	1556	28	0
9	B	1	0	0	0	0
9	E	1	0	0	0	0
All	All	22011	0	21754	475	0

The all-atom clashscore is defined as the number of clashes found per 1000 atoms (including hydrogen atoms). The all-atom clashscore for this structure is 11.

All (475) close contacts within the same asymmetric unit are listed below, sorted by their clash magnitude.

Atom-1	Atom-2	Interatomic distance (Å)	Clash overlap (Å)
7:E:200:THR:HG21	2:D:777:VAL:HA	1.63	0.79
2:D:1219:LEU:HD11	2:D:1223:TRP:HB2	1.70	0.73
2:A:1228:LEU:HD11	2:A:1240:TYR:HE2	1.51	0.72
8:K:143:ILE:HG21	8:K:178:ILE:HD11	1.71	0.72
2:D:814:ARG:HH21	2:D:916:TRP:HB3	1.56	0.69
2:D:1253:ALA:HA	2:D:1256:LEU:HD12	1.75	0.69
7:E:184:ASP:HB3	7:E:207:SER:HA	1.76	0.68
7:E:221:LEU:HD21	7:E:372:VAL:HG13	1.77	0.67
2:D:1291:ARG:HA	2:D:1294:MET:HB3	1.75	0.67
5:M:63:ASN:H	5:M:66:ASN:HD21	1.42	0.67
2:A:1234:ASN:HB3	7:B:359:ASN:HD21	1.58	0.67
2:D:952:ILE:HD12	2:D:1316:TYR:HB2	1.76	0.66
5:M:56:GLU:N	5:M:56:GLU:OE2	2.29	0.66
5:M:227:TYR:H	5:M:230:ASN:HB2	1.61	0.66
2:A:951:GLU:OE2	2:A:1149:ARG:NH1	2.29	0.65
5:M:169[A]:ILE:HG13	5:M:171:SER:H	1.61	0.65
5:M:187:SER:O	5:M:373:ARG:NH1	2.30	0.65
7:E:327:GLY:HA3	7:E:334:LEU:HD21	1.78	0.65
7:B:43:HIS:CE1	7:B:46:ARG:HD2	2.32	0.65
2:D:1300:MET:SD	2:D:1300:MET:N	2.70	0.65
5:M:169[B]:ILE:HG13	5:M:171:SER:H	1.61	0.65
8:K:74:ALA:O	8:K:78:LYS:HG2	1.97	0.64

Continued on next page...

Continued from previous page...

Atom-1	Atom-2	Interatomic distance (Å)	Clash overlap (Å)
2:D:851:LEU:HB3	2:D:884:HIS:HA	1.78	0.64
7:B:50:SER:O	7:B:54:ASN:ND2	2.31	0.64
7:E:210:LYS:NZ	7:E:211:TYR:O	2.31	0.64
7:E:181:LEU:HD22	7:E:267:VAL:HG22	1.79	0.63
4:L:84:GLU:HA	4:L:87:MET:HG3	1.79	0.63
2:A:814:ARG:NH2	7:B:345:GLU:O	2.30	0.63
7:B:197:PHE:HB3	7:B:203:VAL:HG21	1.79	0.63
2:D:1228:LEU:HD12	2:D:1232:TYR:HE2	1.63	0.63
3:J:126:ASN:HB3	3:J:162:LEU:HD23	1.79	0.63
2:D:865:LYS:O	2:D:865:LYS:NZ	2.32	0.63
1:H:304:VAL:HG23	2:A:871:TYR:HD2	1.62	0.63
7:B:48:ALA:O	7:B:52:ILE:HG13	1.98	0.62
2:A:975:LEU:HD12	2:A:1314:ILE:HD11	1.81	0.62
2:D:1212:ARG:O	2:D:1216:ASN:ND2	2.32	0.62
1:H:311:ILE:HD12	1:H:314:LEU:HD21	1.82	0.62
3:J:176:LYS:HD2	3:J:178:THR:HG23	1.81	0.62
4:L:80:MET:HA	4:L:83:LEU:HD12	1.82	0.62
8:K:94:ARG:NH2	8:K:156:GLU:O	2.33	0.62
2:D:1261:LYS:HE3	2:D:1265:ILE:HD11	1.82	0.62
7:E:359:ASN:ND2	2:D:1234:ASN:OD1	2.33	0.61
7:B:150:HIS:HB3	7:B:166:ILE:HD12	1.83	0.61
7:E:345:GLU:O	2:D:814:ARG:NH1	2.33	0.61
7:B:30:GLY:O	7:B:46:ARG:NH1	2.31	0.61
3:J:161:ASP:OD2	3:J:162:LEU:N	2.34	0.61
8:K:103:ASP:O	2:D:965:HIS:NE2	2.33	0.61
5:M:226:ILE:O	6:G:265:GLN:NE2	2.32	0.60
2:D:897:ARG:NH2	2:D:900:GLN:OE1	2.34	0.60
8:K:73:LEU:HD22	8:K:206:VAL:HG13	1.84	0.60
7:B:177:HIS:O	7:B:202:ARG:NH2	2.34	0.60
7:E:191:ASP:OD1	7:E:191:ASP:N	2.35	0.60
2:D:999:THR:HG21	2:D:1002:TYR:HD2	1.66	0.59
4:L:76:TYR:HB3	4:L:80:MET:HE1	1.84	0.59
4:L:31:LEU:O	4:L:35:ILE:HG13	2.02	0.59
5:M:207:SER:OG	5:M:210:ARG:NH2	2.36	0.59
7:E:17:ASP:O	7:E:331:ASN:ND2	2.36	0.58
7:E:204:MET:HG3	7:E:258:ILE:HD11	1.84	0.58
5:M:348:ALA:O	5:M:352:ASN:ND2	2.33	0.58
7:E:289:GLU:OE2	7:E:336:LYS:NZ	2.36	0.58
3:J:109:ASP:OD1	3:J:126:ASN:ND2	2.30	0.58
1:H:17:ARG:HH12	3:J:178:THR:HG22	1.67	0.58
7:E:195:GLU:OE2	2:D:779:ASN:ND2	2.36	0.58

Continued on next page...

Continued from previous page...

Atom-1	Atom-2	Interatomic distance (Å)	Clash overlap (Å)
1:H:23:SER:OG	1:H:27:LYS:NZ	2.37	0.58
7:B:43:HIS:O	7:B:47:MET:HG3	2.03	0.58
2:D:1140:ALA:HB1	2:D:1144:ILE:HD13	1.84	0.58
5:M:35:LYS:NZ	5:M:40:ASN:OD1	2.37	0.58
2:D:932:GLY:O	2:D:936:LYS:NZ	2.33	0.58
5:M:83:SER:HB2	7:E:280:ARG:HD3	1.86	0.58
2:A:779:ASN:ND2	2:A:782:TRP:O	2.34	0.57
2:D:940:LYS:O	2:D:940:LYS:NZ	2.33	0.57
7:B:242:ILE:HB	7:B:364:ASN:HD22	1.69	0.57
2:A:714:LYS:O	2:A:718:THR:OG1	2.21	0.57
5:M:174:ASP:O	5:M:177:ASN:ND2	2.32	0.57
2:A:1220:GLU:HG3	2:A:1222:GLN:H	1.69	0.57
7:B:43:HIS:HE1	7:B:46:ARG:HD2	1.69	0.57
7:B:152:ALA:HB3	7:B:164:ASN:HB2	1.86	0.57
1:H:35:GLU:HB2	1:H:38:ASN:HD21	1.70	0.57
7:B:224:ILE:HB	7:B:231:ASN:HA	1.86	0.57
2:D:832:GLU:HG2	2:D:895:LEU:HD21	1.87	0.57
2:D:1214:LEU:HD21	2:D:1224:PHE:HB2	1.86	0.57
2:A:976:ASP:OD1	2:A:1311:HIS:NE2	2.37	0.56
2:D:678:ASN:HB3	2:D:681:LEU:HB2	1.86	0.56
5:M:177:ASN:HD21	5:M:182:SER:HB2	1.70	0.56
2:A:917:ARG:NH1	2:A:1184:LEU:O	2.38	0.56
2:A:1286:TYR:O	2:A:1290:VAL:HG13	2.06	0.56
4:L:59:ASN:OD1	4:L:65:GLN:NE2	2.38	0.56
2:D:960:THR:HB	2:D:970:LYS:HB2	1.87	0.56
2:D:943:LEU:HB2	2:D:1150:HIS:HE1	1.68	0.56
2:D:1152:THR:O	2:D:1156:GLU:HG2	2.06	0.56
7:E:350:ASP:OD1	7:E:350:ASP:N	2.36	0.56
7:E:199:THR:HG22	2:D:779:ASN:HB3	1.87	0.56
1:H:40:TYR:HB3	6:G:293:ARG:HH21	1.71	0.56
1:H:67:ARG:NH2	3:J:154:ASP:O	2.38	0.56
7:E:179:ARG:NH1	7:E:263:GLN:O	2.39	0.56
2:A:1189:SER:O	2:A:1193:GLU:N	2.36	0.56
1:H:11:LEU:HB3	1:H:14:LYS:HB3	1.88	0.55
2:A:1142:THR:HG22	2:A:1301:PHE:HE2	1.71	0.55
7:B:285:ASN:ND2	7:B:358:SER:O	2.39	0.55
8:K:69:SER:O	8:K:69:SER:OG	2.23	0.55
2:D:810:ILE:HD11	2:D:919:LEU:HD23	1.88	0.55
2:D:927:SER:OG	2:D:927:SER:O	2.21	0.55
7:E:258:ILE:O	7:E:262:TYR:N	2.33	0.55
2:A:1004:ASN:HA	2:A:1007:LYS:HD2	1.87	0.55

Continued on next page...

Continued from previous page...

Atom-1	Atom-2	Interatomic distance (Å)	Clash overlap (Å)
2:A:1228:LEU:HD11	2:A:1240:TYR:CE2	2.39	0.55
4:L:102:SER:O	4:L:106:LEU:HG	2.07	0.55
7:B:82:TYR:OH	7:B:162:TYR:O	2.19	0.55
7:E:165:ASP:HA	7:E:168:LEU:HD12	1.87	0.55
2:D:1137:ASN:OD1	2:D:1302:ARG:NH2	2.34	0.55
2:A:985:PHE:HA	2:A:988:ILE:HD12	1.89	0.55
7:E:26:ASP:OD2	7:E:65:ARG:NH1	2.39	0.55
1:H:80:LEU:HD21	6:G:256:THR:HG23	1.89	0.54
4:L:101:THR:O	4:L:105:GLU:HG3	2.07	0.54
5:M:371:ARG:HH12	5:M:375:ARG:HH21	1.55	0.54
2:A:851:LEU:HD13	2:A:855:LEU:HD22	1.89	0.54
7:E:221:LEU:HD11	7:E:372:VAL:HG22	1.90	0.54
1:H:75:LEU:HD13	3:J:130:GLN:HB2	1.89	0.54
2:A:858:THR:OG1	7:B:28:ASP:OD2	2.23	0.54
2:A:1213:ARG:NE	2:A:1218:ASP:OD2	2.35	0.54
1:H:49:THR:HA	1:H:52:THR:HG22	1.90	0.54
2:D:947:GLN:O	2:D:951:GLU:HG2	2.07	0.54
1:H:41:LYS:NZ	1:H:45:THR:OG1	2.39	0.53
2:A:1140:ALA:HB1	2:A:1144:ILE:HG23	1.90	0.53
7:B:60:LYS:O	7:B:330:ASN:ND2	2.41	0.53
1:H:18:ARG:HG2	2:A:666:VAL:HG11	1.90	0.53
2:A:1180:PHE:HZ	7:B:338:LEU:O	1.92	0.53
7:B:19:ARG:NH2	7:B:303:ILE:O	2.41	0.53
2:D:1291:ARG:NH2	2:D:1296:ASN:OD1	2.41	0.53
6:G:403:TRP:HE1	2:D:893:VAL:HG11	1.73	0.53
7:E:54:ASN:ND2	7:E:340:TYR:O	2.41	0.53
2:A:842:THR:HG22	2:A:844:ASN:H	1.74	0.53
5:M:179:LYS:O	5:M:183:ARG:NH2	2.42	0.53
3:J:123:VAL:HG21	3:J:165:VAL:HG11	1.90	0.53
5:M:56:GLU:HA	5:M:70:GLN:HB2	1.90	0.53
6:G:229:LYS:O	6:G:233:ILE:HG23	2.08	0.53
1:H:301:PRO:HA	1:H:304:VAL:HG12	1.91	0.53
2:A:1204:TYR:HA	2:A:1207:VAL:HG12	1.91	0.53
4:L:81:PRO:O	4:L:84:GLU:HG2	2.09	0.53
2:D:1208:LEU:O	2:D:1212:ARG:HG2	2.09	0.52
2:D:1227:SER:O	2:D:1230:GLN:NE2	2.43	0.52
2:D:960:THR:HG22	2:D:971:PRO:HD2	1.92	0.52
7:E:202:ARG:O	7:E:262:TYR:OH	2.28	0.52
2:D:1018:ILE:HG13	2:D:1019:SER:N	2.25	0.52
2:D:1304:GLU:HG3	2:D:1313:SER:HB3	1.90	0.52
7:B:44:ARG:NH2	7:B:310:GLY:O	2.42	0.52

Continued on next page...

Continued from previous page...

Atom-1	Atom-2	Interatomic distance (Å)	Clash overlap (Å)
7:B:273:GLY:HA3	7:B:318:VAL:HG22	1.91	0.52
7:B:281:LEU:HD12	7:B:313:TYR:HE2	1.74	0.52
8:K:182:ARG:NH1	8:K:245:PHE:O	2.43	0.52
7:E:295:VAL:HG11	7:E:325:GLU:HG2	1.92	0.52
8:K:208:ASN:HB3	8:K:211:ASN:HB2	1.92	0.51
8:K:255:GLU:N	8:K:255:GLU:OE1	2.42	0.51
2:D:685:PHE:HE1	2:D:706:VAL:HG23	1.75	0.51
2:A:777:VAL:HG23	2:A:778:LEU:HD12	1.93	0.51
8:K:162:ASN:O	8:K:250:ARG:NH1	2.43	0.51
5:M:71:ARG:NH1	5:M:85:PRO:O	2.41	0.51
5:M:233:LEU:HD13	6:G:260:ARG:HH11	1.75	0.51
7:B:81:GLU:HG2	7:B:104:PHE:HZ	1.76	0.51
7:B:224:ILE:HG21	7:B:379:ASN:HD22	1.74	0.51
2:D:659:ASN:HA	2:D:662:LEU:HD12	1.93	0.51
2:A:913:ASN:ND2	7:B:345:GLU:OE1	2.44	0.51
2:A:1196:LEU:HD13	2:A:1227:SER:HB3	1.92	0.51
7:B:210:LYS:HG2	7:B:214:PHE:HE2	1.76	0.51
2:A:1264:GLU:O	2:A:1268:LEU:HG	2.10	0.51
7:E:170:ILE:HD11	7:E:268:VAL:HG11	1.93	0.51
2:A:1145:TYR:OH	2:A:1149:ARG:NH1	2.42	0.50
2:D:989:LEU:HD13	2:D:1015:LYS:HD3	1.93	0.50
7:B:250:VAL:HA	7:B:373:MET:HE2	1.93	0.50
7:E:320:ARG:HG2	7:E:353:LEU:HD12	1.93	0.50
2:D:934:THR:O	2:D:937:GLN:HG3	2.12	0.50
2:D:998:HIS:ND1	2:D:1215:ILE:O	2.44	0.50
7:E:204:MET:SD	7:E:205:THR:N	2.85	0.50
8:K:184:CYS:HB3	8:K:201:ARG:HA	1.92	0.50
2:A:1239:LEU:HD23	2:A:1239:LEU:H	1.77	0.50
7:E:9:ASP:OD1	7:E:9:ASP:N	2.44	0.50
7:E:277:SER:O	7:E:317:ASN:ND2	2.45	0.50
2:A:1309:THR:HG23	2:A:1311:HIS:HB3	1.93	0.50
7:B:270:GLN:OE1	7:B:272:GLY:N	2.44	0.50
2:A:766:PRO:HB2	7:B:80:ASP:HB2	1.93	0.50
7:B:238:LEU:HB3	7:B:364:ASN:HD21	1.77	0.50
7:B:255:ILE:O	7:B:259:MET:HG2	2.11	0.50
1:H:106:HIS:CE1	6:G:230:ILE:HG22	2.46	0.50
2:A:686:LEU:HG	3:J:175:ILE:HD13	1.94	0.50
7:E:254:VAL:O	7:E:258:ILE:HG22	2.11	0.50
8:K:182:ARG:HD3	8:K:247:ILE:HD11	1.94	0.50
2:A:755:TYR:CD1	2:A:784:GLY:HA2	2.47	0.50
7:B:167:VAL:HG22	7:B:197:PHE:HE2	1.76	0.50

Continued on next page...

Continued from previous page...

Atom-1	Atom-2	Interatomic distance (Å)	Clash overlap (Å)
7:E:376:ILE:HA	7:E:379:ASN:HD21	1.77	0.50
7:E:184:ASP:OD1	7:E:186:ASP:N	2.45	0.49
3:J:116:LYS:HG2	3:J:121:LEU:HB2	1.92	0.49
7:B:261:TRP:HE3	7:B:380:LEU:HG	1.77	0.49
7:B:114:ASP:N	7:B:114:ASP:OD1	2.45	0.49
7:E:273:GLY:HA2	7:E:291:HIS:HE1	1.77	0.49
2:D:665:GLU:N	2:D:665:GLU:OE1	2.43	0.49
5:M:224:GLU:OE1	5:M:297:SER:OG	2.29	0.49
7:E:51:LEU:O	7:E:55:TYR:HB2	2.12	0.49
7:E:94:LEU:HD23	7:E:94:LEU:H	1.76	0.49
7:E:370:ASP:O	7:E:374:THR:OG1	2.25	0.49
1:H:302:ASP:O	1:H:306:GLU:HG2	2.13	0.49
5:M:86:MET:HB2	2:D:805:GLU:HG3	1.95	0.49
4:L:94:LEU:HD21	5:M:361:LYS:HE3	1.95	0.49
5:M:32:ARG:NH2	2:D:695:ASP:OD1	2.42	0.48
5:M:66:ASN:HB2	5:M:69:LEU:HD12	1.93	0.48
2:A:686:LEU:HD11	3:J:180:CYS:SG	2.52	0.48
2:A:706:VAL:HG21	2:A:720:PHE:CE2	2.48	0.48
8:K:153:ASN:OD1	8:K:153:ASN:N	2.44	0.48
2:D:1009:ARG:O	2:D:1013:LEU:HG	2.14	0.48
5:M:57:ALA:HB3	5:M:72:SER:HB3	1.94	0.48
5:M:359:LEU:HA	5:M:362:ILE:HD12	1.94	0.48
2:D:992:ALA:O	2:D:996:ILE:HD13	2.14	0.48
7:B:55:TYR:CE1	7:B:339:PRO:HD2	2.49	0.48
7:B:180:VAL:HG12	7:B:266:ALA:HB3	1.95	0.48
7:E:375:ASN:O	7:E:379:ASN:ND2	2.46	0.48
2:A:886:HIS:O	2:A:890:THR:OG1	2.21	0.48
2:A:1204:TYR:O	2:A:1208:LEU:HG	2.14	0.48
4:L:80:MET:HB3	5:M:351:ARG:NH1	2.28	0.48
7:B:51:LEU:HD21	7:B:347:TYR:HE2	1.78	0.48
2:D:703:VAL:HA	2:D:706:VAL:HG12	1.95	0.48
2:A:1009:ARG:HH12	2:A:1077:LEU:HD22	1.79	0.48
8:K:73:LEU:HD21	8:K:204:VAL:HA	1.96	0.48
2:A:1180:PHE:HE1	7:B:344:TYR:CZ	2.32	0.48
5:M:339:GLU:OE1	5:M:342:ARG:NH2	2.47	0.48
2:D:822:GLU:OE2	2:D:826:ARG:NH1	2.47	0.48
1:H:79:ARG:HH12	2:A:857:HIS:CE1	2.32	0.48
7:B:78:HIS:HB3	7:B:82:TYR:HD2	1.78	0.48
1:H:67:ARG:HB3	3:J:156:ARG:HH12	1.80	0.47
5:M:340:SER:O	5:M:344:LEU:HG	2.14	0.47
5:M:368:LYS:O	5:M:372:ILE:HG12	2.14	0.47

Continued on next page...

Continued from previous page...

Atom-1	Atom-2	Interatomic distance (Å)	Clash overlap (Å)
7:B:145:TYR:OH	7:B:326:THR:OG1	2.32	0.47
7:E:174:LEU:HD21	7:E:202:ARG:HB3	1.94	0.47
2:D:1152:THR:OG1	2:D:1156:GLU:OE2	2.26	0.47
2:A:1065:LEU:N	2:A:1257:MET:SD	2.88	0.47
5:M:184:THR:O	5:M:187:SER:OG	2.28	0.47
7:E:184:ASP:OD2	7:E:207:SER:OG	2.23	0.47
5:M:202:GLU:OE2	7:B:177:HIS:ND1	2.47	0.47
2:D:1138:LEU:HD13	2:D:1269:PHE:CD1	2.49	0.47
1:H:311:ILE:HD11	2:A:889:VAL:HG23	1.97	0.47
2:A:820:TYR:HE2	2:A:869:LYS:HG2	1.80	0.47
2:A:901:LYS:HD2	2:A:901:LYS:HA	1.74	0.47
2:A:1019:SER:HA	2:A:1024:ILE:HG13	1.96	0.47
5:M:222:HIS:NE2	5:M:296:GLN:OE1	2.48	0.47
6:G:403:TRP:CZ2	2:D:890:THR:HG23	2.50	0.47
7:B:46:ARG:HD3	7:B:343:TYR:OH	2.14	0.47
2:D:1014:LEU:HA	2:D:1017:PHE:CD1	2.50	0.47
7:B:109:ASP:OD2	7:B:110:CYS:N	2.48	0.47
8:K:238:LYS:HA	8:K:253:GLY:HA3	1.96	0.47
1:H:83:PHE:HB2	2:A:829:GLN:HG3	1.97	0.47
7:B:211:TYR:CE2	7:B:220:GLU:HG3	2.49	0.47
7:E:19:ARG:HB2	7:E:140:ASP:HB2	1.96	0.47
7:E:55:TYR:CE2	7:E:334:LEU:HD12	2.50	0.47
1:H:16:LYS:HA	1:H:19:PHE:CD1	2.50	0.47
3:J:111:PHE:HD2	3:J:112:LEU:HD23	1.81	0.47
2:A:1256:LEU:HG	2:A:1262:THR:HB	1.97	0.46
7:B:317:ASN:O	7:B:321:THR:HG22	2.16	0.46
7:E:75:CYS:HB3	2:D:769:GLY:H	1.80	0.46
7:E:209:HIS:HE1	7:E:235:ASN:HB3	1.80	0.46
2:D:673:LYS:HE2	2:D:674:ARG:HH12	1.80	0.46
2:D:1015:LYS:HA	2:D:1018:ILE:HG12	1.97	0.46
2:A:691:LEU:HD13	3:J:111:PHE:HZ	1.79	0.46
2:A:979:PHE:HZ	2:A:1152:THR:HG22	1.79	0.46
5:M:209:VAL:O	5:M:213:GLN:HG2	2.15	0.46
5:M:231:LEU:HD12	6:G:261:THR:HG23	1.98	0.46
8:K:90:LEU:N	8:K:140:THR:O	2.47	0.46
4:L:35:ILE:HG23	4:L:38:LYS:HE3	1.96	0.46
6:G:262:PHE:HE2	7:B:58:TYR:HB2	1.80	0.46
1:H:40:TYR:CD2	6:G:289:ILE:HG23	2.51	0.46
4:L:75:ILE:O	4:L:79:LEU:HD23	2.15	0.46
2:D:1203:ALA:O	2:D:1207:VAL:HG12	2.16	0.46
2:A:670:GLU:OE2	2:A:674:ARG:NH1	2.46	0.46

Continued on next page...

Continued from previous page...

Atom-1	Atom-2	Interatomic distance (Å)	Clash overlap (Å)
2:A:1234:ASN:HB3	7:B:359:ASN:ND2	2.30	0.46
8:K:161:ARG:HD2	8:K:161:ARG:HA	1.73	0.46
8:K:164:GLU:HG3	8:K:166:TRP:HZ3	1.80	0.46
2:D:1247:GLN:HA	2:D:1250:VAL:HG22	1.98	0.46
4:L:108:TYR:CD2	5:M:372:ILE:HD12	2.51	0.46
5:M:344:LEU:HD12	5:M:345:SER:N	2.31	0.46
7:B:204:MET:HB2	7:B:262:TYR:CZ	2.51	0.46
7:E:269:LEU:HD23	7:E:307:VAL:HG22	1.97	0.46
2:D:675:TYR:HE2	2:D:712:SER:HB2	1.81	0.46
2:A:713:ASN:HB3	2:A:716:LEU:HB3	1.98	0.45
8:K:73:LEU:HD12	8:K:73:LEU:H	1.81	0.45
2:D:1161:ILE:HA	2:D:1164:MET:HG2	1.98	0.45
1:H:31:ASN:O	1:H:35:GLU:HG2	2.15	0.45
1:H:83:PHE:HE1	2:A:825:LEU:HD21	1.82	0.45
2:D:945:THR:HG23	2:D:1146:ILE:HD11	1.98	0.45
2:D:987:ASP:O	2:D:991:LEU:HD23	2.16	0.45
1:H:35:GLU:HB2	1:H:38:ASN:ND2	2.30	0.45
2:A:827:THR:HG21	2:A:866:VAL:HG21	1.98	0.45
2:A:897:ARG:HD2	2:A:897:ARG:HA	1.71	0.45
7:E:189:HIS:H	7:E:216:PRO:HG3	1.82	0.45
2:D:824:ASN:ND2	2:D:902:ASP:OD1	2.50	0.45
2:D:1228:LEU:HD12	2:D:1232:TYR:CE2	2.49	0.45
2:A:706:VAL:HG21	2:A:720:PHE:HE2	1.81	0.45
2:A:1262:THR:O	2:A:1265:ILE:HG22	2.17	0.45
4:L:15:THR:O	4:L:19:GLU:HG2	2.16	0.45
7:E:189:HIS:HD2	7:E:209:HIS:CE1	2.35	0.45
4:L:55:LYS:HG3	4:L:57:ASP:H	1.82	0.45
7:B:111:PRO:HD2	7:B:111:PRO:O	2.17	0.45
2:A:1194:MET:HB2	2:A:1196:LEU:HG	1.99	0.45
4:L:80:MET:HB3	5:M:351:ARG:HH12	1.82	0.45
5:M:63:ASN:HA	5:M:66:ASN:OD1	2.17	0.45
2:A:860:MET:SD	2:A:860:MET:N	2.89	0.45
5:M:206:MET:HG2	5:M:210:ARG:HH12	1.80	0.45
7:B:153:LYS:HE3	7:B:156:GLU:HB2	1.99	0.45
2:D:1171:GLU:O	2:D:1174:THR:OG1	2.33	0.45
2:A:1268:LEU:HD12	2:A:1290:VAL:HG12	1.98	0.44
2:A:1302:ARG:NH1	2:A:1304:GLU:HB2	2.33	0.44
2:A:907:ARG:HA	2:A:910:ARG:HH21	1.82	0.44
7:E:314:THR:O	7:E:318:VAL:HG12	2.17	0.44
2:D:774:CYS:O	2:D:778:LEU:HB2	2.18	0.44
2:D:823:SER:HB3	2:D:866:VAL:HG22	1.98	0.44

Continued on next page...

Continued from previous page...

Atom-1	Atom-2	Interatomic distance (Å)	Clash overlap (Å)
2:A:837:LYS:HE3	3:J:133:LEU:HA	1.99	0.44
7:E:258:ILE:HB	7:E:380:LEU:HD21	2.00	0.44
2:D:851:LEU:HD21	2:D:855:LEU:HG	2.00	0.44
5:M:73:GLU:HB3	8:K:257:THR:HG22	1.99	0.44
7:E:194:GLU:HG2	7:E:198:TYR:HE1	1.83	0.44
8:K:84:LEU:HD12	8:K:138:ILE:HG12	1.99	0.44
7:E:270:GLN:OE1	7:E:272:GLY:N	2.51	0.44
2:D:1168:VAL:HG11	2:D:1232:TYR:CD1	2.53	0.44
1:H:67:ARG:NH1	3:J:154:ASP:HB3	2.33	0.44
5:M:353:LYS:NZ	6:G:280:ASN:HD21	2.15	0.44
2:D:996:ILE:HG23	2:D:1007:LYS:HG2	2.00	0.44
2:D:1251:LYS:HD2	2:D:1251:LYS:HA	1.69	0.44
2:A:803:TYR:CD1	2:A:926:LYS:HD3	2.53	0.43
7:B:59:LYS:HB2	7:B:59:LYS:HE3	1.77	0.43
2:D:1225:GLU:HG3	2:D:1240:TYR:HD2	1.83	0.43
2:D:1302:ARG:HH11	2:D:1315:GLN:HB3	1.83	0.43
2:A:1212:ARG:O	2:A:1215:ILE:HG22	2.18	0.43
7:B:47:MET:SD	7:B:315:MET:HB3	2.57	0.43
7:B:81:GLU:HG2	7:B:104:PHE:CZ	2.53	0.43
2:D:940:LYS:HD2	2:D:1244:LYS:HZ3	1.84	0.43
1:H:67:ARG:HH21	3:J:148:ASN:ND2	2.16	0.43
7:E:185:ILE:HD13	7:E:291:HIS:CD2	2.54	0.43
2:D:901:LYS:HA	2:D:901:LYS:HD3	1.69	0.43
2:D:939:ASP:OD1	2:D:1157:ARG:NH2	2.51	0.43
2:A:836:ASN:OD1	3:J:136:SER:OG	2.30	0.43
5:M:347:ILE:O	5:M:351:ARG:HG3	2.18	0.43
8:K:198:LYS:HA	8:K:198:LYS:HD2	1.77	0.43
1:H:79:ARG:HG2	2:A:829:GLN:HE21	1.84	0.43
2:A:673:LYS:HG3	2:A:682:TYR:CE1	2.53	0.43
3:J:149:THR:N	3:J:152:GLN:OE1	2.51	0.43
2:A:917:ARG:HG3	2:A:1186:LEU:HD13	2.00	0.43
1:H:67:ARG:HH12	3:J:154:ASP:HB3	1.84	0.43
1:H:111:LYS:HA	1:H:111:LYS:HD3	1.83	0.43
2:A:820:TYR:CE2	2:A:869:LYS:HG2	2.54	0.43
4:L:71:ASN:HD22	4:L:71:ASN:HA	1.66	0.43
2:D:855:LEU:HD13	2:D:863:TYR:CZ	2.54	0.43
2:A:701:ASP:O	2:A:704:GLU:HG2	2.19	0.43
2:A:990:CYS:O	2:A:994:THR:HG22	2.19	0.43
2:A:1295:SER:HG	2:A:1297:THR:HG1	1.67	0.43
7:B:276:LEU:HD11	7:B:321:THR:HG21	1.99	0.43
7:E:175:ARG:HD2	2:D:773:MET:CE	2.48	0.43

Continued on next page...

Continued from previous page...

Atom-1	Atom-2	Interatomic distance (Å)	Clash overlap (Å)
2:D:1305:PHE:HD1	2:D:1312:VAL:HG22	1.83	0.43
4:L:28:TYR:HB3	4:L:93:MET:HG3	2.01	0.43
7:E:272:GLY:HA2	7:E:310:GLY:O	2.19	0.43
7:E:288:MET:SD	7:E:354:SER:HA	2.59	0.43
2:D:1229:ARG:HG2	2:D:1229:ARG:HH11	1.83	0.43
2:A:851:LEU:HD23	2:A:852:PRO:HD2	2.00	0.43
2:A:1186:LEU:HD12	2:A:1186:LEU:O	2.19	0.43
8:K:243:LYS:HG3	8:K:248:THR:HG22	2.00	0.43
2:D:1210:LEU:HD23	2:D:1210:LEU:HA	1.84	0.43
3:J:127:LEU:HD12	3:J:127:LEU:HA	1.86	0.42
4:L:106:LEU:O	4:L:110:VAL:HG23	2.19	0.42
5:M:81:ASN:HB3	5:M:84:LYS:HE3	2.00	0.42
5:M:225:PRO:HG3	7:B:20:ARG:NE	2.33	0.42
7:E:3:TYR:N	7:E:370:ASP:OD2	2.40	0.42
2:D:826:ARG:HH21	2:D:862:ILE:HG23	1.84	0.42
5:M:376:ILE:HD12	5:M:376:ILE:HA	1.87	0.42
7:B:205:THR:O	7:B:205:THR:OG1	2.36	0.42
7:B:250:VAL:HA	7:B:373:MET:CE	2.49	0.42
7:E:151:HIS:HB2	7:E:161:CYS:HB2	2.01	0.42
7:E:248:ARG:HB2	7:E:293:ASN:ND2	2.34	0.42
2:D:999:THR:HG21	2:D:1002:TYR:CD2	2.52	0.42
5:M:80:LEU:N	7:E:109:ASP:OD2	2.30	0.42
2:D:814:ARG:HG2	2:D:916:TRP:CZ3	2.55	0.42
2:A:755:TYR:HD1	2:A:784:GLY:HA2	1.83	0.42
2:A:1180:PHE:CE1	7:B:344:TYR:CZ	3.07	0.42
4:L:35:ILE:HD11	4:L:89:VAL:HG11	2.01	0.42
7:B:82:TYR:OH	7:B:157:ALA:HB2	2.19	0.42
2:D:1168:VAL:HG21	2:D:1232:TYR:HE1	1.85	0.42
2:A:1180:PHE:HE1	7:B:344:TYR:CE2	2.38	0.42
6:G:294:ARG:HA	6:G:294:ARG:HD3	1.63	0.42
2:A:778:LEU:HD11	7:B:171:ILE:HD11	2.01	0.42
7:E:267:VAL:O	7:E:305:MET:HA	2.20	0.42
2:D:1166:GLU:HG2	2:D:1167:ARG:N	2.35	0.42
1:H:36:ARG:H	1:H:36:ARG:HG3	1.68	0.42
2:A:826:ARG:HD2	2:A:826:ARG:HA	1.88	0.42
2:A:1228:LEU:HD12	2:A:1229:ARG:N	2.35	0.42
2:A:1255:THR:HA	2:A:1258:THR:HG22	2.02	0.42
4:L:58:PHE:CZ	4:L:65:GLN:HA	2.55	0.42
5:M:78:ARG:H	5:M:78:ARG:HG2	1.69	0.42
7:E:181:LEU:HD21	7:E:183:ILE:HD11	2.02	0.42
2:D:828:ILE:HD13	2:D:899:LYS:HD3	2.01	0.42

Continued on next page...

Continued from previous page...

Atom-1	Atom-2	Interatomic distance (Å)	Clash overlap (Å)
2:D:859:SER:HB2	2:D:862:ILE:HG13	2.00	0.42
2:A:692:TYR:HB2	2:A:702:LEU:HD13	2.00	0.42
7:B:3:TYR:HB3	7:B:370:ASP:OD1	2.20	0.42
7:E:141:VAL:HG11	7:E:329:LEU:HD22	2.00	0.42
2:D:940:LYS:HA	2:D:1244:LYS:HZ1	1.84	0.42
1:H:40:TYR:HD2	6:G:289:ILE:HG23	1.84	0.42
2:A:667:THR:O	2:A:670:GLU:HG3	2.20	0.42
2:A:863:TYR:CE2	2:A:880:ILE:HD11	2.55	0.42
2:A:1244:LYS:HE2	2:A:1244:LYS:HB2	1.80	0.42
4:L:95:ASP:OD2	4:L:96:ASN:N	2.52	0.42
7:B:54:ASN:ND2	7:B:341:ASN:HB3	2.35	0.42
2:D:835:VAL:HA	2:D:838:ILE:HG22	2.02	0.42
2:A:1302:ARG:HH12	2:A:1304:GLU:HB2	1.85	0.42
4:L:64:THR:HA	4:L:67:ARG:HG2	2.02	0.42
7:E:134:LEU:HG	7:E:306:MET:HG2	2.02	0.42
8:K:76:THR:HA	8:K:80:TYR:HD2	1.83	0.42
7:B:151:HIS:HB2	7:B:161:CYS:SG	2.60	0.41
7:B:313:TYR:N	7:B:313:TYR:CD1	2.87	0.41
2:D:830:CYS:O	2:D:833:THR:HG22	2.21	0.41
2:A:1226:GLU:H	2:A:1226:GLU:CD	2.24	0.41
8:K:123:PRO:HG3	8:K:158:PRO:HB2	2.01	0.41
8:K:190:ALA:HA	8:K:216:LEU:HD11	2.02	0.41
2:A:686:LEU:HD12	2:A:686:LEU:O	2.20	0.41
2:A:800:LYS:HD3	2:A:800:LYS:HA	1.78	0.41
2:A:868:ARG:O	2:A:873:LYS:N	2.54	0.41
4:L:45:ASN:O	4:L:49:ARG:HG2	2.20	0.41
7:E:127:SER:OG	7:E:165:ASP:OD2	2.39	0.41
2:D:757:ARG:HB2	2:D:782:TRP:CZ3	2.55	0.41
7:E:173:LEU:HD11	7:E:306:MET:SD	2.59	0.41
2:A:803:TYR:HB3	2:A:923:VAL:HG13	2.02	0.41
2:A:1157:ARG:NH1	2:A:1245:VAL:HG21	2.35	0.41
7:B:239:ARG:HB3	7:B:363:VAL:HB	2.03	0.41
7:E:316:ARG:H	7:E:316:ARG:HG3	1.51	0.41
2:D:1206:GLN:O	2:D:1209:ARG:HG3	2.21	0.41
2:A:932:GLY:HA2	2:A:935:PHE:HB2	2.03	0.41
5:M:63:ASN:N	5:M:66:ASN:HD21	2.16	0.41
7:B:149:LEU:HB3	7:B:161:CYS:SG	2.61	0.41
7:B:214:PHE:HB3	7:B:216:PRO:HD2	2.03	0.41
7:B:328:LEU:HD12	7:B:328:LEU:HA	1.89	0.41
8:K:178:ILE:HD13	8:K:178:ILE:HA	1.80	0.41
2:D:770:ARG:HE	2:D:775:TRP:HD1	1.69	0.41

Continued on next page...

Continued from previous page...

Atom-1	Atom-2	Interatomic distance (Å)	Clash overlap (Å)
2:A:1151:TRP:HE3	2:A:1249:LEU:HD11	1.85	0.41
2:D:1305:PHE:HB2	2:D:1312:VAL:HG13	2.03	0.41
2:A:933:LEU:HD23	2:A:933:LEU:HA	1.90	0.41
3:J:137:LYS:H	3:J:137:LYS:HG2	1.58	0.41
5:M:164:GLU:H	5:M:164:GLU:HG3	1.70	0.41
2:A:803:TYR:CE2	2:A:933:LEU:HD11	2.56	0.41
2:A:816:GLU:O	2:A:820:TYR:HD1	2.04	0.41
2:A:1153:THR:O	2:A:1156:GLU:HG3	2.21	0.41
2:A:1180:PHE:HD1	2:A:1180:PHE:O	2.04	0.41
2:A:1210:LEU:HA	2:A:1210:LEU:HD12	1.79	0.41
2:A:1273:ARG:HH21	2:A:1305:PHE:HE2	1.68	0.41
3:J:138:LEU:O	3:J:141:LYS:HG3	2.21	0.41
7:B:210:LYS:HG2	7:B:214:PHE:CE2	2.55	0.41
7:B:270:GLN:NE2	7:B:310:GLY:HA3	2.35	0.41
2:D:851:LEU:HD12	2:D:852:PRO:HD2	2.03	0.41
2:D:952:ILE:HA	2:D:955:ILE:HG22	2.02	0.41
2:D:962:LYS:HE3	2:D:964:ILE:HG12	2.03	0.41
2:D:989:LEU:HD11	2:D:1018:ILE:HD13	2.03	0.41
2:A:678:ASN:HB3	2:A:681:LEU:HB2	2.03	0.41
2:A:757:ARG:NH1	2:A:781:GLU:OE1	2.54	0.41
2:A:929:ASP:OD2	2:A:932:GLY:HA3	2.21	0.41
1:H:296:LEU:HD23	1:H:296:LEU:HA	1.88	0.40
5:M:63:ASN:HD21	8:K:252:TRP:HZ2	1.68	0.40
7:B:343:TYR:CD1	7:B:343:TYR:N	2.89	0.40
7:B:379:ASN:OD1	7:B:379:ASN:N	2.54	0.40
2:D:1149:ARG:HA	2:D:1152:THR:HG22	2.03	0.40
2:A:808:PHE:CZ	7:B:280:ARG:HA	2.56	0.40
4:L:19:GLU:OE2	5:M:184:THR:HG21	2.21	0.40
6:G:248:GLU:O	6:G:252:ILE:HG12	2.21	0.40
7:B:179:ARG:HB3	7:B:262:TYR:CE2	2.57	0.40
7:B:181:LEU:HA	7:B:204:MET:HB3	2.03	0.40
7:B:189:HIS:ND1	7:B:218:THR:OG1	2.54	0.40
7:E:247:TYR:CD2	7:E:286:LEU:HD11	2.57	0.40
1:H:16:LYS:HA	1:H:19:PHE:HD1	1.85	0.40
2:A:1307:LYS:HA	2:A:1307:LYS:HD3	1.89	0.40
4:L:89:VAL:HA	4:L:92:ILE:HD12	2.04	0.40
7:E:314:THR:HG23	7:E:317:ASN:HB2	2.03	0.40
2:D:1226:GLU:HA	2:D:1229:ARG:HG3	2.02	0.40
2:A:673:LYS:HG3	2:A:682:TYR:CZ	2.57	0.40
6:G:398:ASP:HA	6:G:401:HIS:HB3	2.03	0.40
7:B:242:ILE:HB	7:B:364:ASN:ND2	2.35	0.40

Continued on next page...

Continued from previous page...

Atom-1	Atom-2	Interatomic distance (Å)	Clash overlap (Å)
7:E:181:LEU:HD13	7:E:264:PRO:HG3	2.03	0.40
2:D:1305:PHE:CD1	2:D:1312:VAL:HG22	2.55	0.40

There are no symmetry-related clashes.

5.3 Torsion angles [i](#)

5.3.1 Protein backbone [i](#)

In the following table, the Percentiles column shows the percent Ramachandran outliers of the chain as a percentile score with respect to all PDB entries followed by that with respect to all EM entries.

The Analysed column shows the number of residues for which the backbone conformation was analysed, and the total number of residues.

Mol	Chain	Analysed	Favoured	Allowed	Outliers	Percentiles	
1	H	140/327 (43%)	139 (99%)	1 (1%)	0	100	100
2	A	513/1536 (33%)	507 (99%)	6 (1%)	0	100	100
2	D	491/1536 (32%)	478 (97%)	13 (3%)	0	100	100
3	J	88/201 (44%)	86 (98%)	2 (2%)	0	100	100
4	L	125/330 (38%)	123 (98%)	2 (2%)	0	100	100
5	M	214/430 (50%)	206 (96%)	8 (4%)	0	100	100
6	G	93/405 (23%)	90 (97%)	3 (3%)	0	100	100
7	B	381/433 (88%)	369 (97%)	12 (3%)	0	100	100
7	E	380/433 (88%)	366 (96%)	14 (4%)	0	100	100
8	K	195/294 (66%)	187 (96%)	8 (4%)	0	100	100
All	All	2620/5925 (44%)	2551 (97%)	69 (3%)	0	100	100

There are no Ramachandran outliers to report.

5.3.2 Protein sidechains [i](#)

In the following table, the Percentiles column shows the percent sidechain outliers of the chain as a percentile score with respect to all PDB entries followed by that with respect to all EM entries.

The Analysed column shows the number of residues for which the sidechain conformation was analysed, and the total number of residues.

Mol	Chain	Analysed	Rotameric	Outliers	Percentiles	
1	H	134/290 (46%)	130 (97%)	4 (3%)	41	71
2	A	492/1391 (35%)	481 (98%)	11 (2%)	52	78
2	D	471/1391 (34%)	456 (97%)	15 (3%)	39	69
3	J	83/179 (46%)	81 (98%)	2 (2%)	49	76
4	L	123/290 (42%)	117 (95%)	6 (5%)	25	59
5	M	209/393 (53%)	200 (96%)	9 (4%)	29	62
6	G	91/371 (24%)	85 (93%)	6 (7%)	16	49
7	B	325/367 (89%)	316 (97%)	9 (3%)	43	72
7	E	324/367 (88%)	314 (97%)	10 (3%)	40	70
8	K	180/269 (67%)	174 (97%)	6 (3%)	38	68
All	All	2432/5308 (46%)	2354 (97%)	78 (3%)	42	69

All (78) residues with a non-rotameric sidechain are listed below:

Mol	Chain	Res	Type
1	H	50	ASP
1	H	95	PHE
1	H	98	ASP
1	H	112	LEU
2	A	978	ASP
2	A	987	ASP
2	A	1074	TYR
2	A	1180	PHE
2	A	1202	ASP
2	A	1208	LEU
2	A	1232	TYR
2	A	1233	ASN
2	A	1244	LYS
2	A	1295	SER
2	A	1311	HIS
3	J	116	LYS
3	J	136	SER
4	L	36	ASP
4	L	59	ASN
4	L	103	ARG
4	L	105	GLU
4	L	108	TYR

Continued on next page...

Continued from previous page...

Mol	Chain	Res	Type
4	L	145	SER
5	M	31	ARG
5	M	32	ARG
5	M	86	MET
5	M	89	GLN
5	M	164	GLU
5	M	183	ARG
5	M	222	HIS
5	M	234	PRO
5	M	332	GLN
6	G	222	GLU
6	G	226	TYR
6	G	229	LYS
6	G	244	ARG
6	G	269	LYS
6	G	294	ARG
7	B	47	MET
7	B	87	SER
7	B	92	ASP
7	B	105	ASN
7	B	108	ASP
7	B	211	TYR
7	B	299	LYS
7	B	317	ASN
7	B	368	TYR
7	E	19	ARG
7	E	61	MET
7	E	191	ASP
7	E	222	ARG
7	E	223	ASP
7	E	240	ASP
7	E	243	ASP
7	E	244	ASP
7	E	291	HIS
7	E	375	ASN
8	K	69	SER
8	K	102	GLU
8	K	152	PHE
8	K	154	ASN
8	K	161	ARG
8	K	174	ASP
2	D	682	TYR

Continued on next page...

Continued from previous page...

Mol	Chain	Res	Type
2	D	762	ASP
2	D	772	ASP
2	D	775	TRP
2	D	849	PHE
2	D	929	ASP
2	D	941	LYS
2	D	1004	ASN
2	D	1008	GLU
2	D	1017	PHE
2	D	1204	TYR
2	D	1259	ASP
2	D	1300	MET
2	D	1311	HIS
2	D	1316	TYR

Sometimes sidechains can be flipped to improve hydrogen bonding and reduce clashes. All (9) such sidechains are listed below:

Mol	Chain	Res	Type
4	L	65	GLN
6	G	280	ASN
7	B	54	ASN
7	E	38	HIS
7	E	189	HIS
7	E	293	ASN
7	E	359	ASN
7	E	379	ASN
2	D	1230	GLN

5.3.3 RNA [i](#)

There are no RNA molecules in this entry.

5.4 Non-standard residues in protein, DNA, RNA chains [i](#)

There are no non-standard protein/DNA/RNA residues in this entry.

5.5 Carbohydrates [i](#)

There are no monosaccharides in this entry.

5.6 Ligand geometry

Of 2 ligands modelled in this entry, 2 are monoatomic - leaving 0 for Mogul analysis.

There are no bond length outliers.

There are no bond angle outliers.

There are no chirality outliers.

There are no torsion outliers.

There are no ring outliers.

No monomer is involved in short contacts.

5.7 Other polymers

There are no such residues in this entry.

5.8 Polymer linkage issues

There are no chain breaks in this entry.

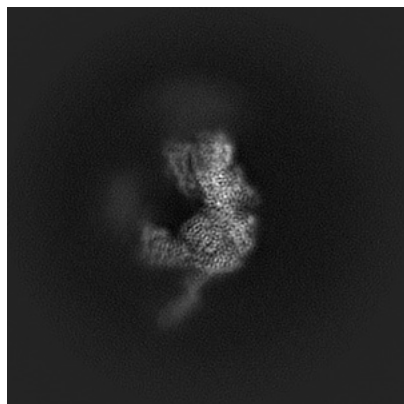
6 Map visualisation [i](#)

This section contains visualisations of the EMDB entry EMD-29892. These allow visual inspection of the internal detail of the map and identification of artifacts.

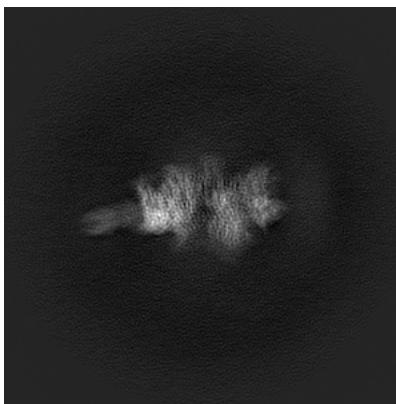
Images derived from a raw map, generated by summing the deposited half-maps, are presented below the corresponding image components of the primary map to allow further visual inspection and comparison with those of the primary map.

6.1 Orthogonal projections [i](#)

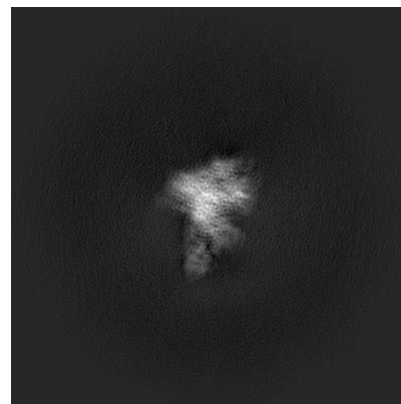
6.1.1 Primary map



X

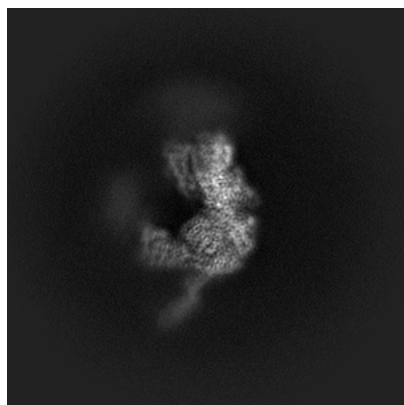


Y

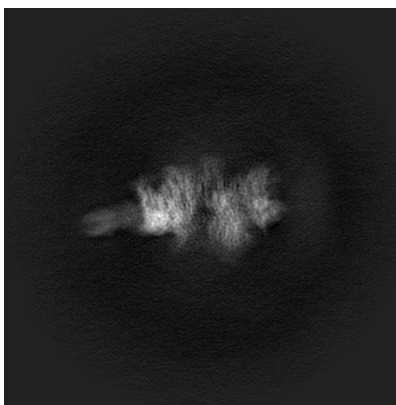


Z

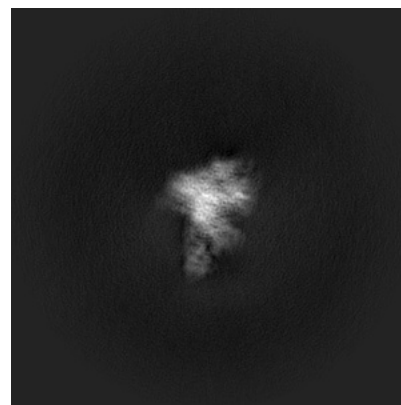
6.1.2 Raw map



X



Y

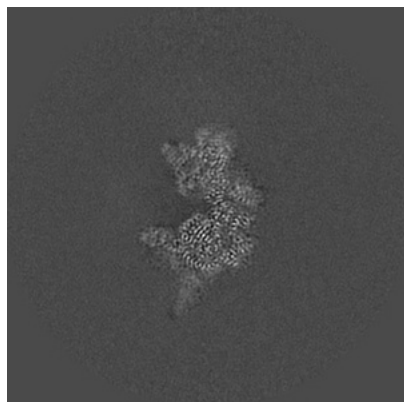


Z

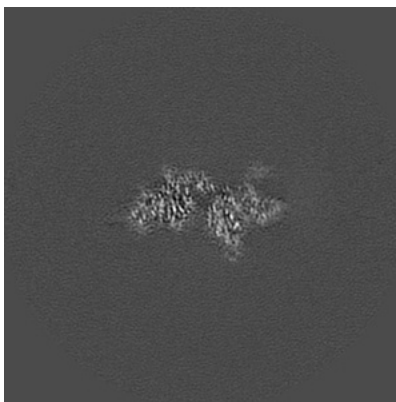
The images above show the map projected in three orthogonal directions.

6.2 Central slices [i](#)

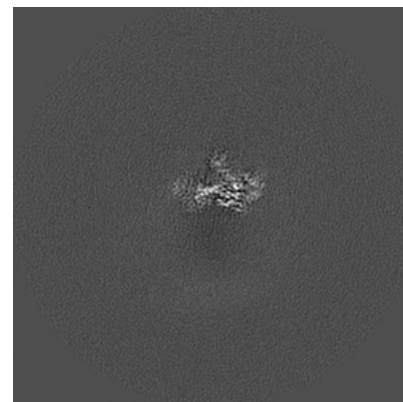
6.2.1 Primary map



X Index: 136

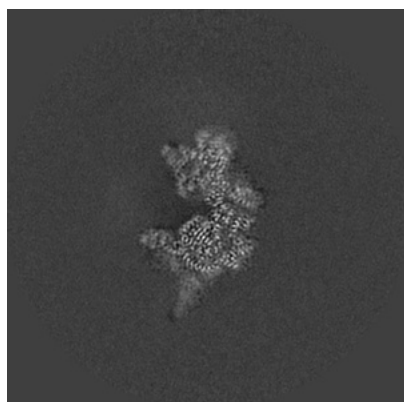


Y Index: 136

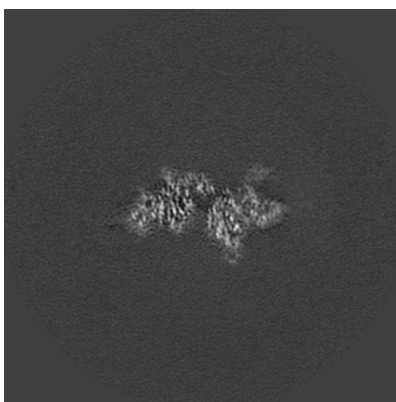


Z Index: 136

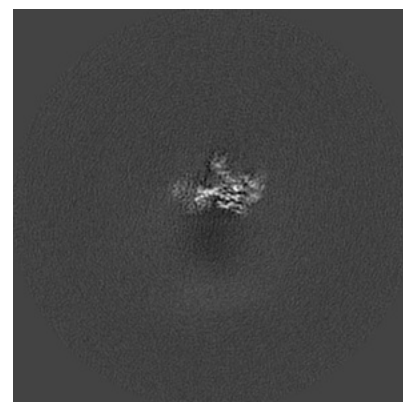
6.2.2 Raw map



X Index: 136



Y Index: 136

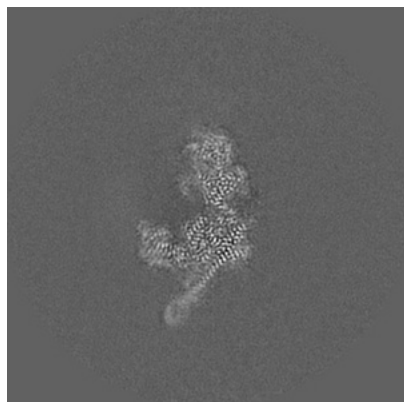


Z Index: 136

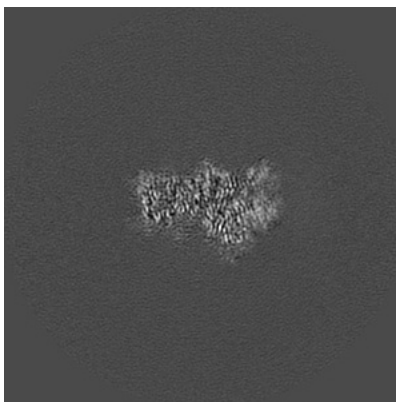
The images above show central slices of the map in three orthogonal directions.

6.3 Largest variance slices [i](#)

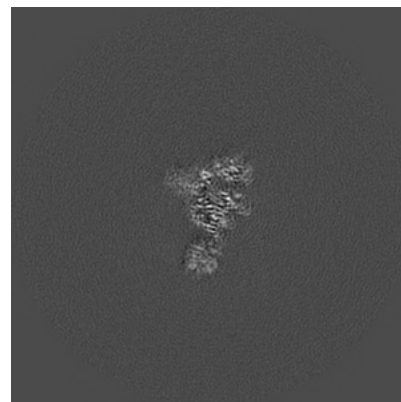
6.3.1 Primary map



X Index: 131

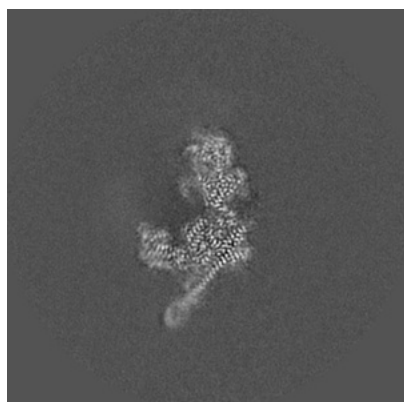


Y Index: 143

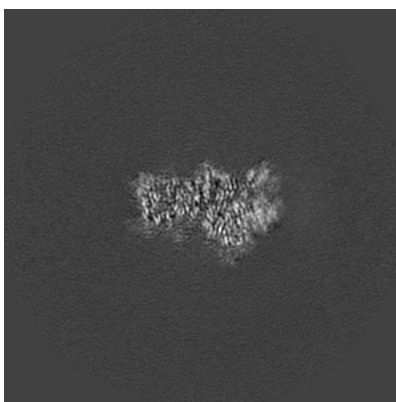


Z Index: 115

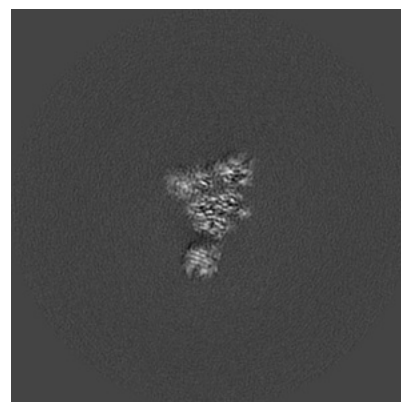
6.3.2 Raw map



X Index: 131



Y Index: 143

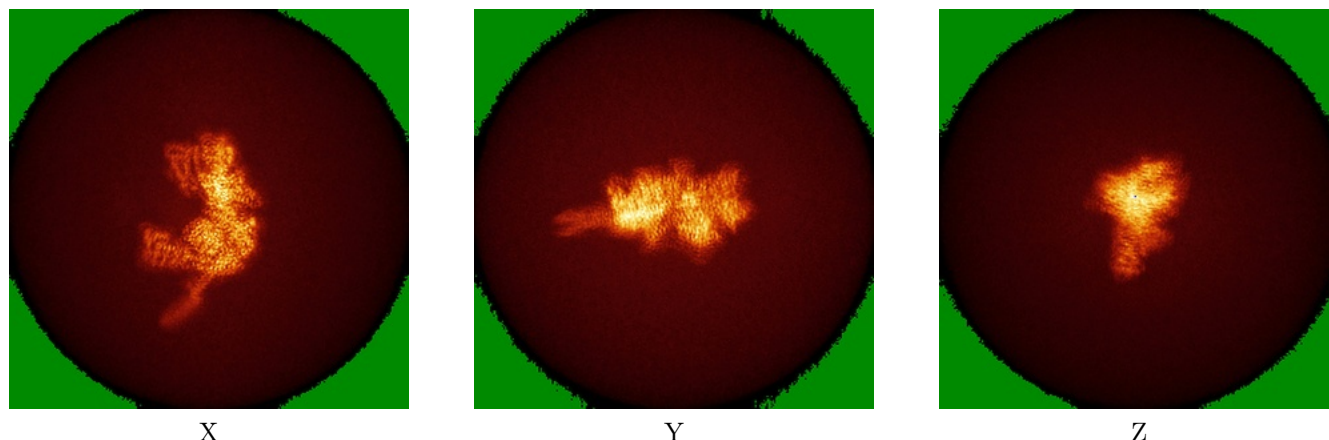


Z Index: 117

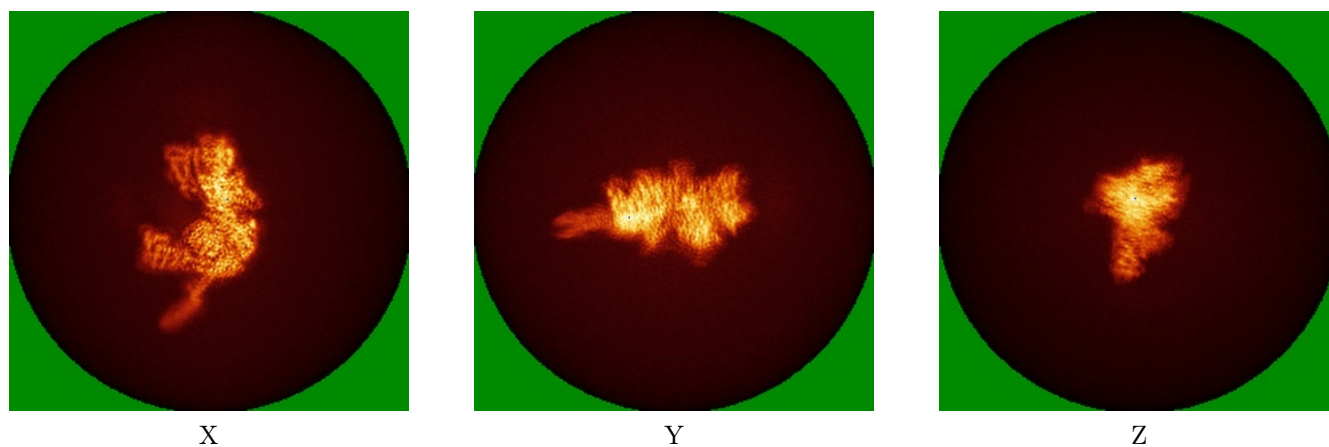
The images above show the largest variance slices of the map in three orthogonal directions.

6.4 Orthogonal standard-deviation projections (False-color) [i](#)

6.4.1 Primary map



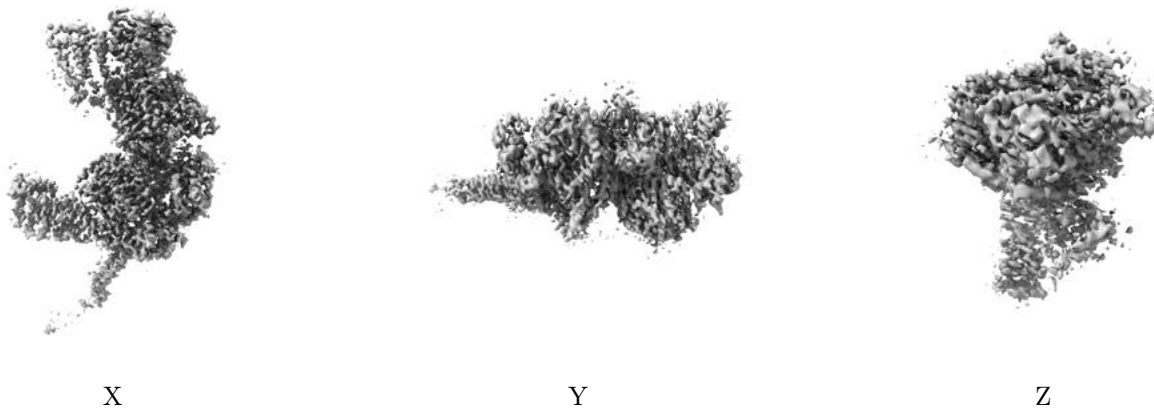
6.4.2 Raw map



The images above show the map standard deviation projections with false color in three orthogonal directions. Minimum values are shown in green, max in blue, and dark to light orange shades represent small to large values respectively.

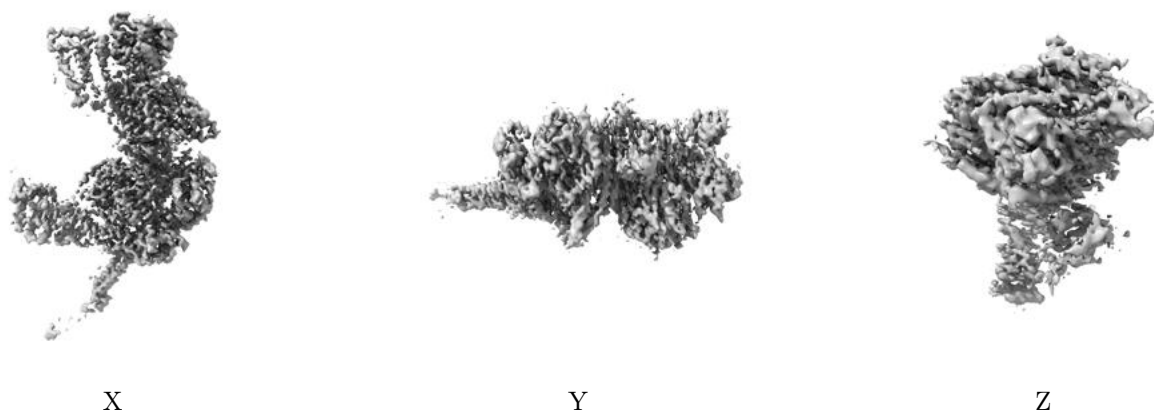
6.5 Orthogonal surface views [i](#)

6.5.1 Primary map



The images above show the 3D surface view of the map at the recommended contour level 0.015. These images, in conjunction with the slice images, may facilitate assessment of whether an appropriate contour level has been provided.

6.5.2 Raw map



These images show the 3D surface of the raw map. The raw map's contour level was selected so that its surface encloses the same volume as the primary map does at its recommended contour level.

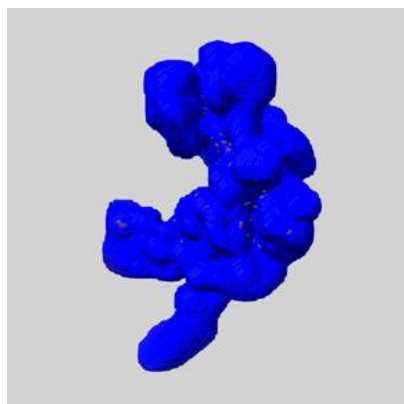
6.6 Mask visualisation [i](#)

This section shows the 3D surface view of the primary map at 50% transparency overlaid with the specified mask at 0% transparency

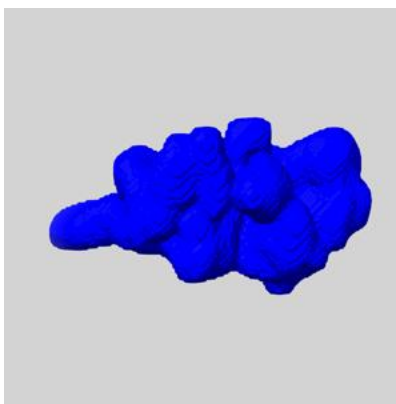
A mask typically either:

- Encompasses the whole structure
- Separates out a domain, a functional unit, a monomer or an area of interest from a larger structure

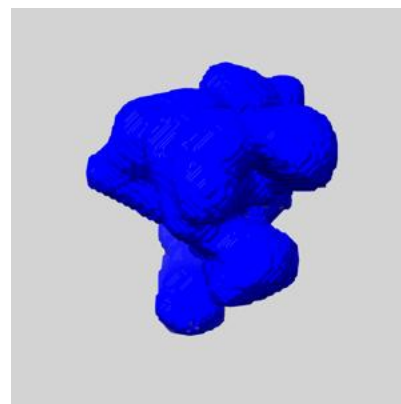
6.6.1 emd_29892_msk_1.map [i](#)



X



Y

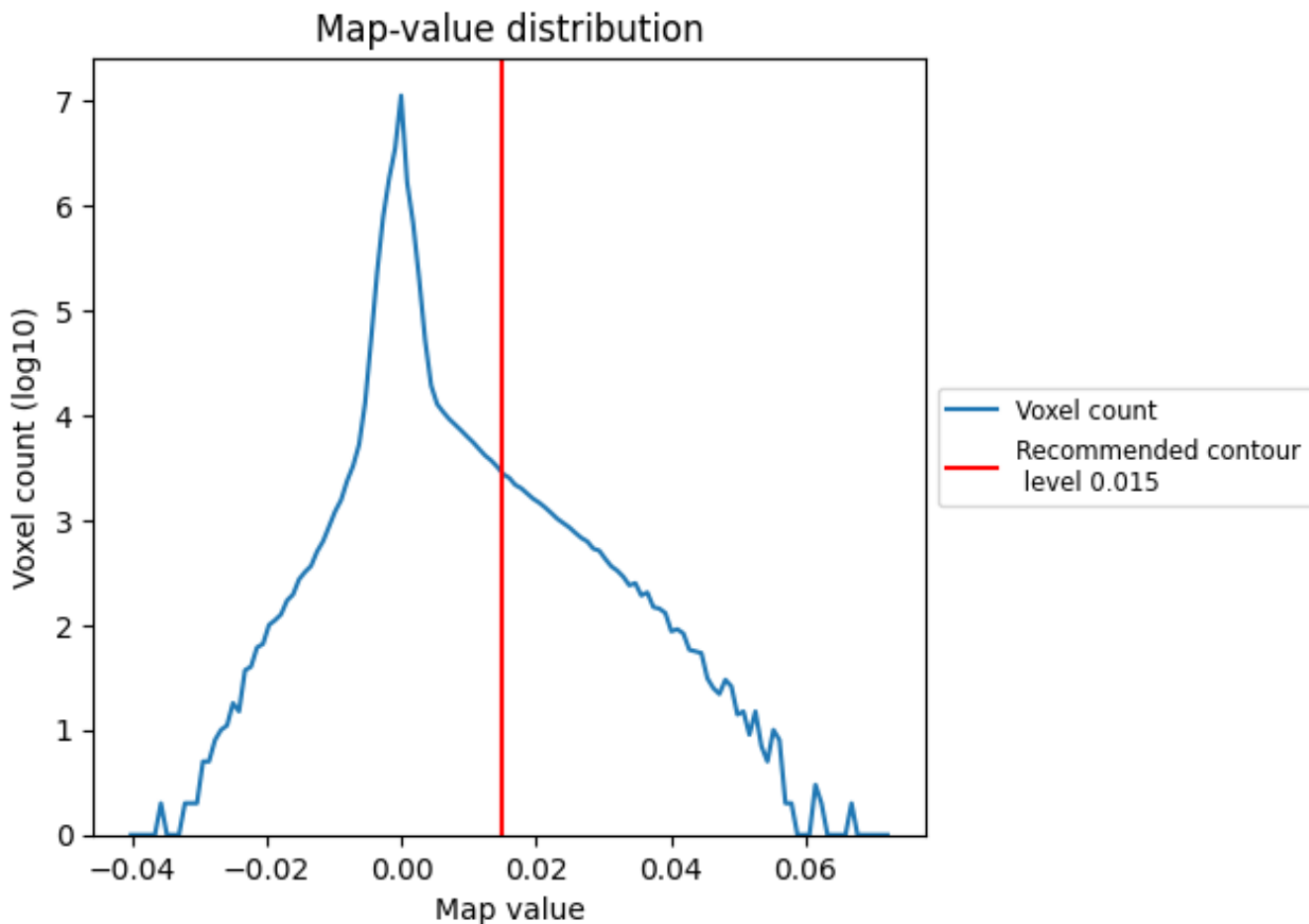


Z

7 Map analysis [i](#)

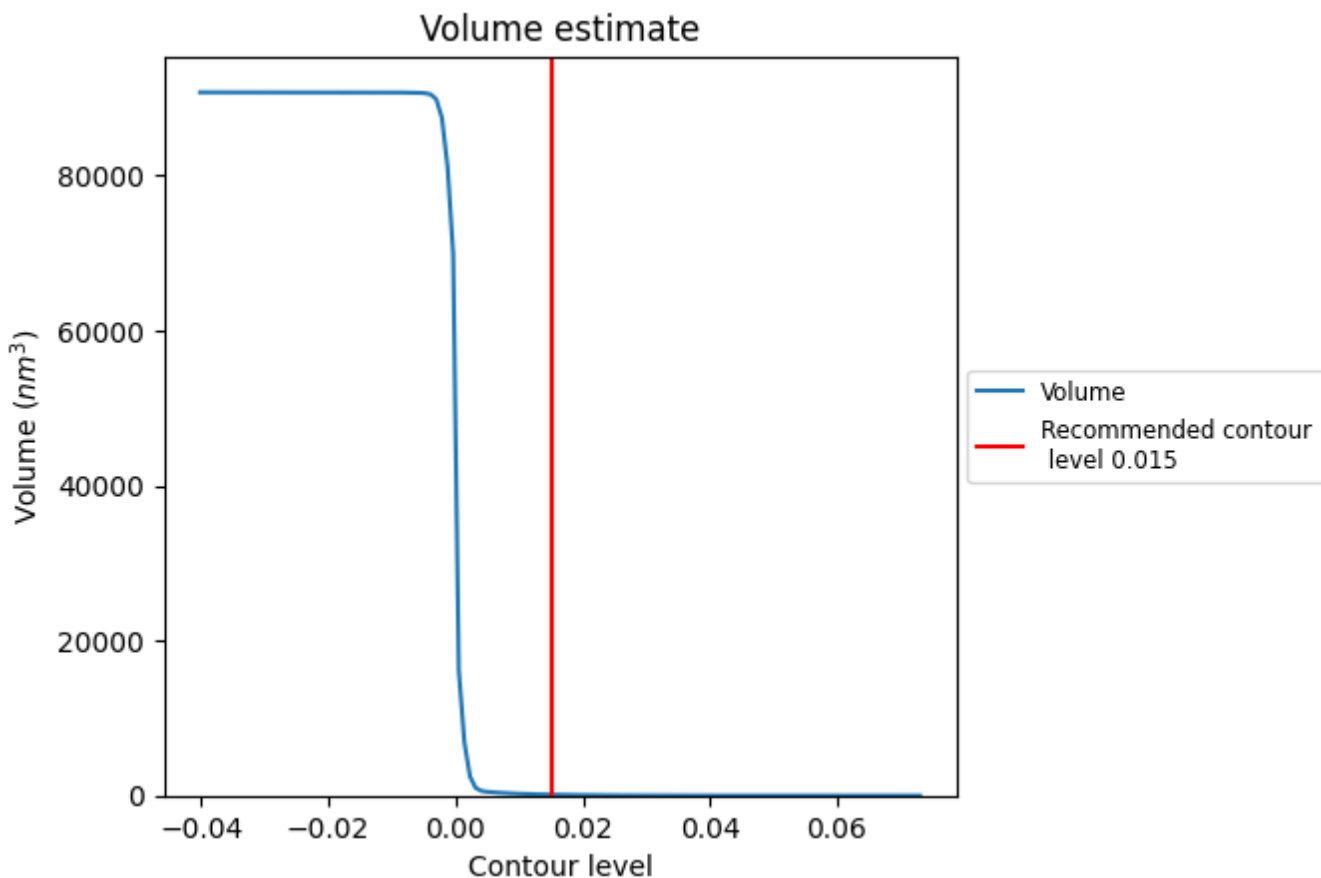
This section contains the results of statistical analysis of the map.

7.1 Map-value distribution [i](#)



The map-value distribution is plotted in 128 intervals along the x-axis. The y-axis is logarithmic. A spike in this graph at zero usually indicates that the volume has been masked.

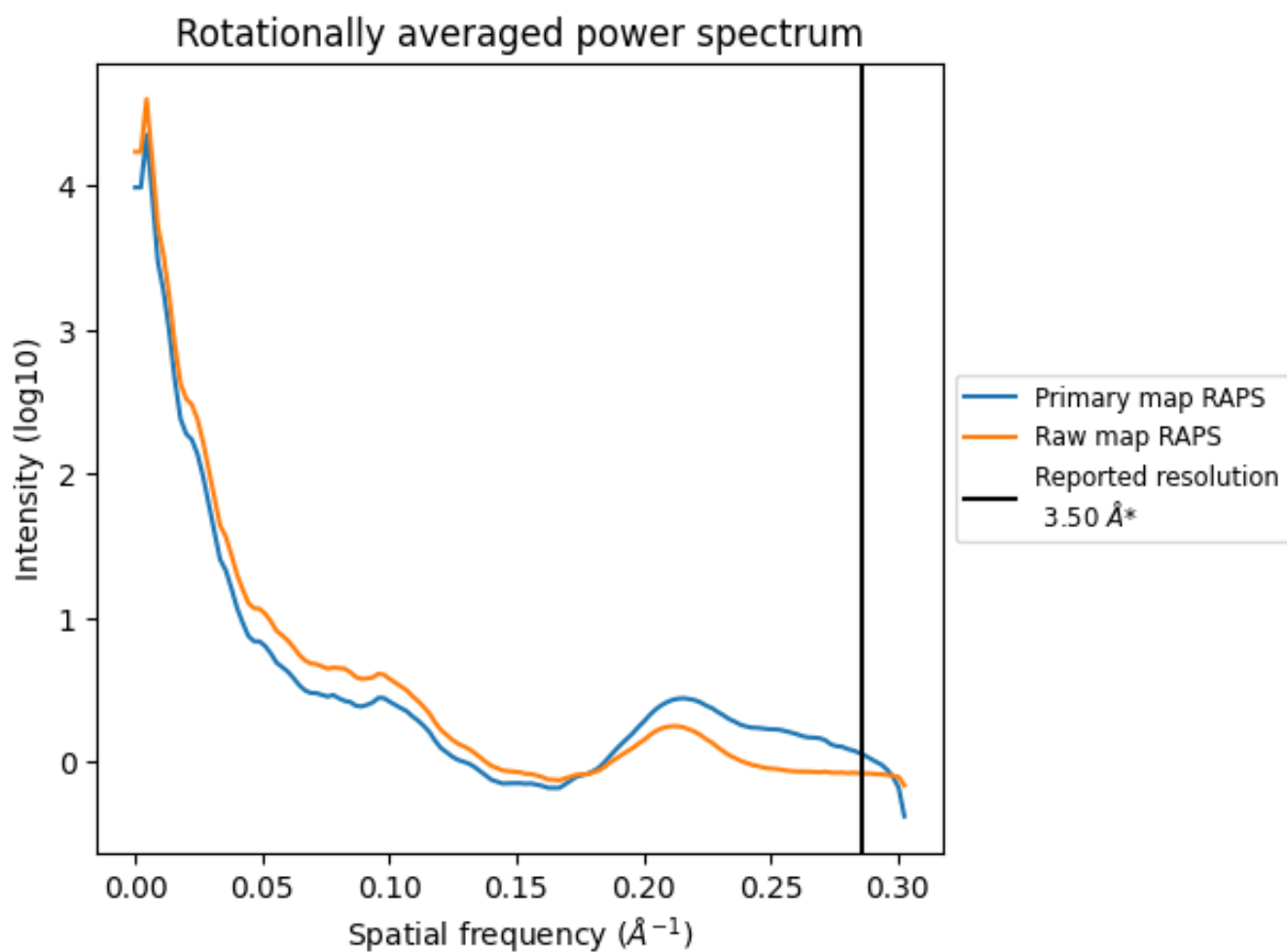
7.2 Volume estimate [i](#)



The volume at the recommended contour level is 119 nm^3 ; this corresponds to an approximate mass of 108 kDa.

The volume estimate graph shows how the enclosed volume varies with the contour level. The recommended contour level is shown as a vertical line and the intersection between the line and the curve gives the volume of the enclosed surface at the given level.

7.3 Rotationally averaged power spectrum i

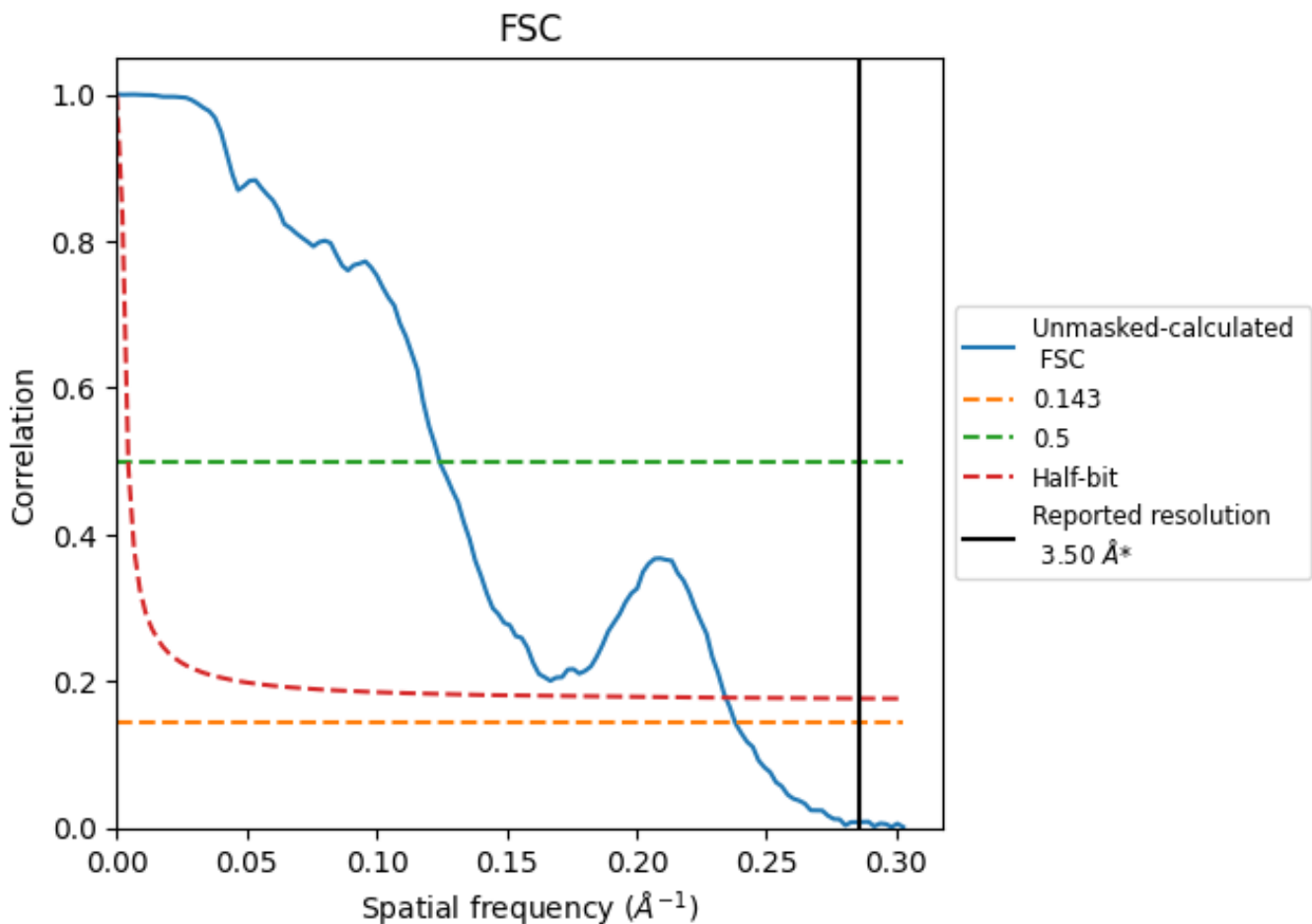


*Reported resolution corresponds to spatial frequency of 0.286 Å⁻¹

8 Fourier-Shell correlation [i](#)

Fourier-Shell Correlation (FSC) is the most commonly used method to estimate the resolution of single-particle and subtomogram-averaged maps. The shape of the curve depends on the imposed symmetry, mask and whether or not the two 3D reconstructions used were processed from a common reference. The reported resolution is shown as a black line. A curve is displayed for the half-bit criterion in addition to lines showing the 0.143 gold standard cut-off and 0.5 cut-off.

8.1 FSC [i](#)



*Reported resolution corresponds to spatial frequency of 0.286 Å⁻¹

8.2 Resolution estimates [i](#)

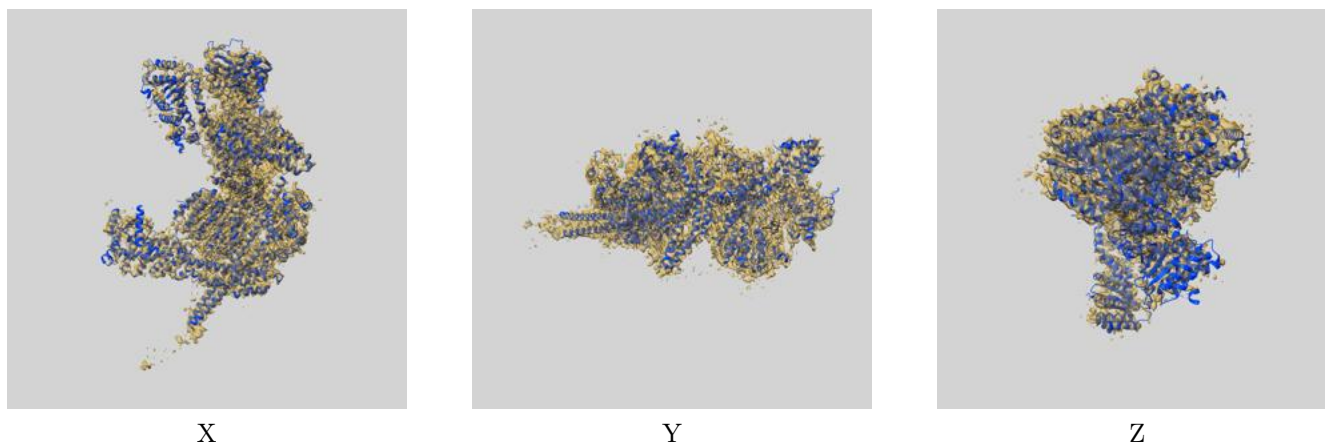
Resolution estimate (Å)	Estimation criterion (FSC cut-off)		
	0.143	0.5	Half-bit
Reported by author	3.50	-	-
Author-provided FSC curve	-	-	-
Unmasked-calculated*	4.20	8.05	4.27

*Resolution estimate based on FSC curve calculated by comparison of deposited half-maps. The value from deposited half-maps intersecting FSC 0.143 CUT-OFF 4.20 differs from the reported value 3.5 by more than 10 %

9 Map-model fit [i](#)

This section contains information regarding the fit between EMDB map EMD-29892 and PDB model 8GA8. Per-residue inclusion information can be found in section 3 on page 6.

9.1 Map-model overlay [i](#)



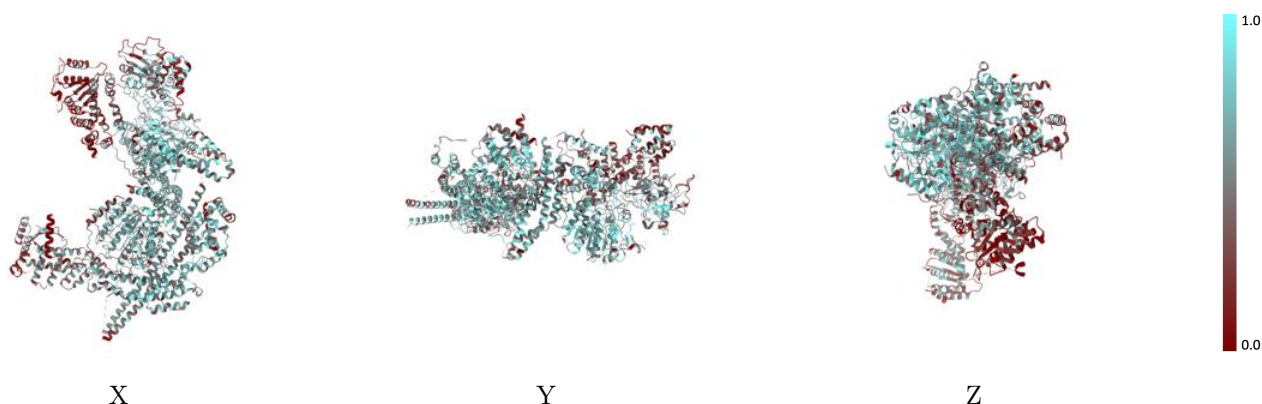
The images above show the 3D surface view of the map at the recommended contour level 0.015 at 50% transparency in yellow overlaid with a ribbon representation of the model coloured in blue. These images allow for the visual assessment of the quality of fit between the atomic model and the map.

9.2 Q-score mapped to coordinate model [i](#)



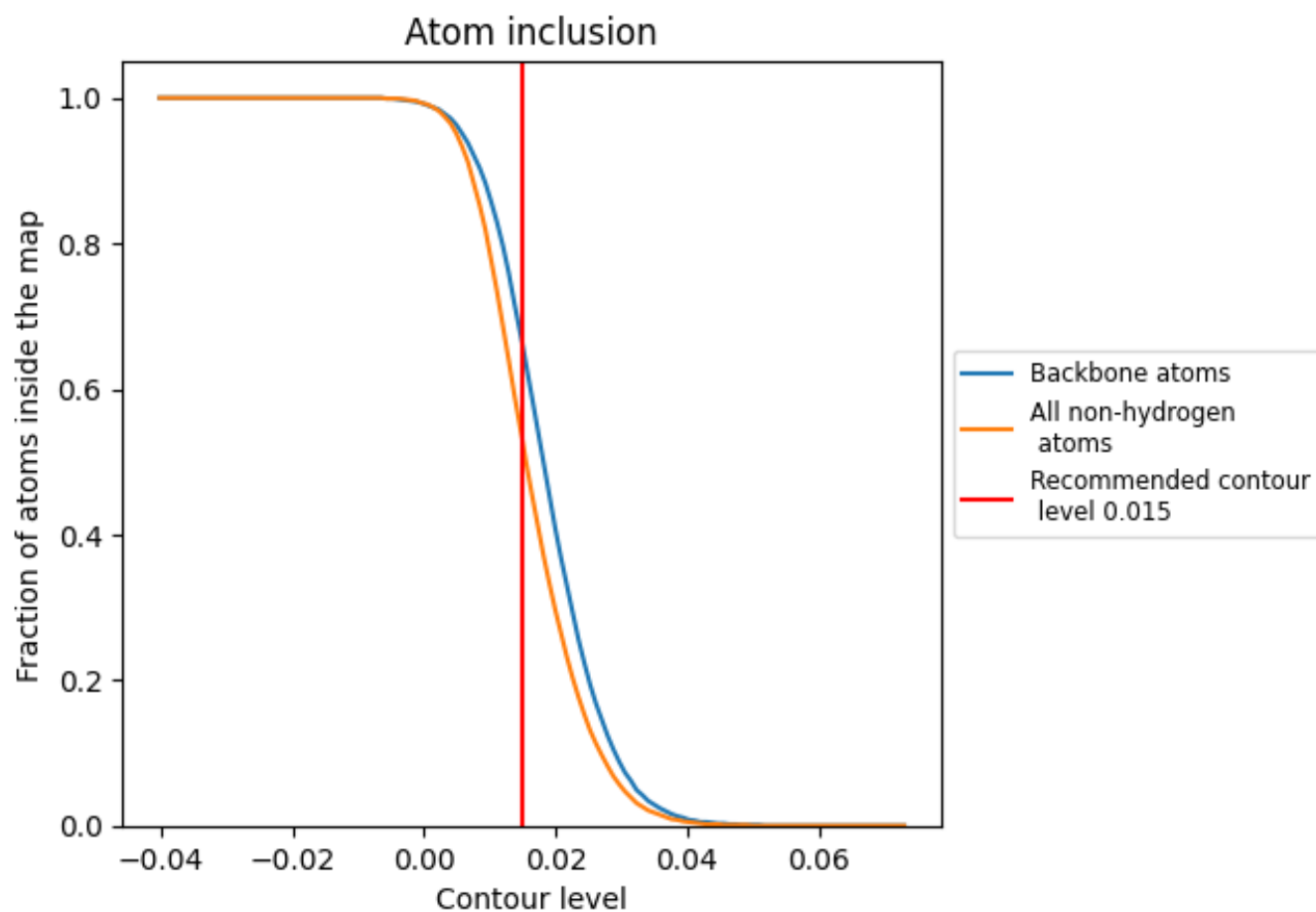
The images above show the model with each residue coloured according to its Q-score. This shows their resolvability in the map with higher Q-score values reflecting better resolvability. Please note: Q-score is calculating the resolvability of atoms, and thus high values are only expected at resolutions at which atoms can be resolved. Low Q-score values may therefore be expected for many entries.

9.3 Atom inclusion mapped to coordinate model [i](#)



The images above show the model with each residue coloured according to its atom inclusion. This shows to what extent they are inside the map at the recommended contour level (0.015).























9.4 Atom inclusion [i](#)



At the recommended contour level, 66% of all backbone atoms, 53% of all non-hydrogen atoms, are inside the map.

9.5 Map-model fit summary

The table lists the average atom inclusion at the recommended contour level (0.015) and Q-score for the entire model and for each chain.

Chain	Atom inclusion	Q-score
All	 0.5290	 0.3970
A	 0.4640	 0.3730
B	 0.5890	 0.4430
D	 0.3650	 0.3530
E	 0.6680	 0.4340
G	 0.5520	 0.4180
H	 0.5410	 0.3720
J	 0.6990	 0.4370
K	 0.5270	 0.3920
L	 0.6270	 0.3940
M	 0.5950	 0.4190

