



Full wwPDB X-ray Structure Validation Report ⓘ

Feb 18, 2024 – 08:07 PM EST

PDB ID : 4GBZ
Title : The structure of the MFS (major facilitator superfamily) proton:xylose symporter XylE bound to D-glucose
Authors : Sun, L.F.; Zeng, X.; Yan, C.Y.; Yan, N.
Deposited on : 2012-07-28
Resolution : 2.89 Å(reported)

This is a Full wwPDB X-ray Structure Validation Report for a publicly released PDB entry.

We welcome your comments at validation@mail.wwpdb.org

A user guide is available at

<https://www.wwpdb.org/validation/2017/XrayValidationReportHelp>

with specific help available everywhere you see the ⓘ symbol.

The types of validation reports are described at

<http://www.wwpdb.org/validation/2017/FAQs#types>.

The following versions of software and data (see [references ⓘ](#)) were used in the production of this report:

MolProbity : 4.02b-467
Mogul : 1.8.5 (274361), CSD as541be (2020)
Xtriage (Phenix) : 1.13
EDS : 2.36
buster-report : 1.1.7 (2018)
Percentile statistics : 20191225.v01 (using entries in the PDB archive December 25th 2019)
Refmac : 5.8.0158
CCP4 : 7.0.044 (Gargrove)
Ideal geometry (proteins) : Engh & Huber (2001)
Ideal geometry (DNA, RNA) : Parkinson et al. (1996)
Validation Pipeline (wwPDB-VP) : 2.36

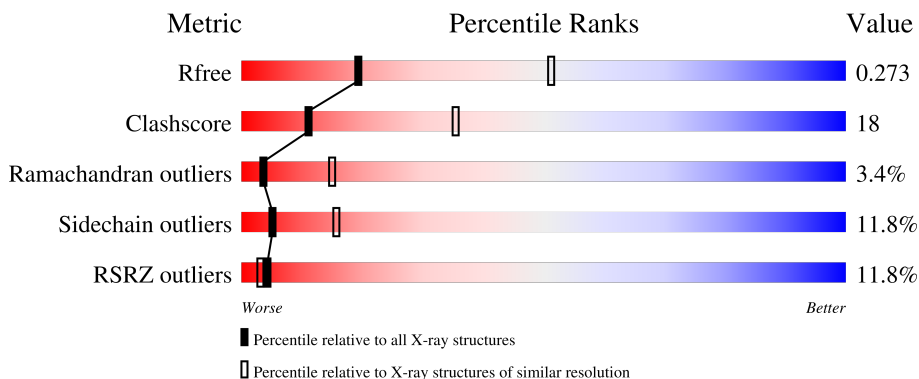
1 Overall quality at a glance

The following experimental techniques were used to determine the structure:

X-RAY DIFFRACTION

The reported resolution of this entry is 2.89 Å.

Percentile scores (ranging between 0-100) for global validation metrics of the entry are shown in the following graphic. The table shows the number of entries on which the scores are based.



Metric	Whole archive (#Entries)	Similar resolution (#Entries, resolution range(Å))
R_{free}	130704	1957 (2.90-2.90)
Clashscore	141614	2172 (2.90-2.90)
Ramachandran outliers	138981	2115 (2.90-2.90)
Sidechain outliers	138945	2117 (2.90-2.90)
RSRZ outliers	127900	1906 (2.90-2.90)

The table below summarises the geometric issues observed across the polymeric chains and their fit to the electron density. The red, orange, yellow and green segments of the lower bar indicate the fraction of residues that contain outliers for ≥ 3 , 2, 1 and 0 types of geometric quality criteria respectively. A grey segment represents the fraction of residues that are not modelled. The numeric value for each fraction is indicated below the corresponding segment, with a dot representing fractions $\leq 5\%$. The upper red bar (where present) indicates the fraction of residues that have poor fit to the electron density. The numeric value is given above the bar.

Mol	Chain	Length	Quality of chain
1	A	491	

The following table lists non-polymeric compounds, carbohydrate monomers and non-standard residues in protein, DNA, RNA chains that are outliers for geometric or electron-density-fit criteria:

Mol	Type	Chain	Res	Chirality	Geometry	Clashes	Electron density
3	BNG	A	502	-	-	-	X

2 Entry composition [i](#)

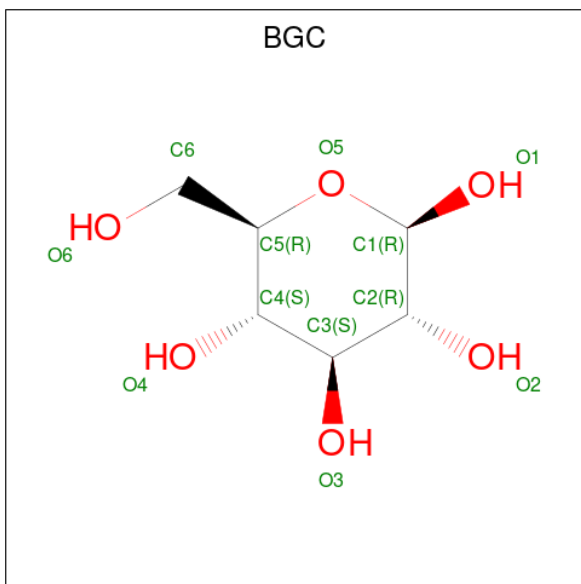
There are 4 unique types of molecules in this entry. The entry contains 3677 atoms, of which 0 are hydrogens and 0 are deuteriums.

In the tables below, the ZeroOcc column contains the number of atoms modelled with zero occupancy, the AltConf column contains the number of residues with at least one atom in alternate conformation and the Trace column contains the number of residues modelled with at most 2 atoms.

- Molecule 1 is a protein called D-xylose-proton symporter.

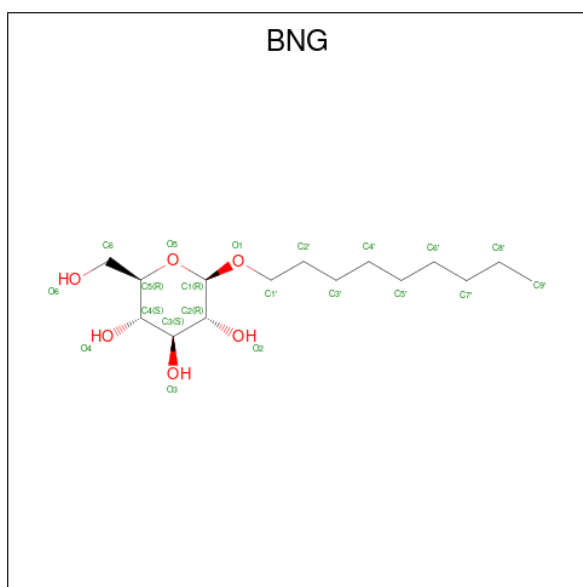
Mol	Chain	Residues	Atoms					ZeroOcc	AltConf	Trace
			Total	C	N	O	S			
1	A	475	3579	2369	565	622	23	0	0	0

- Molecule 2 is beta-D-glucopyranose (three-letter code: BGC) (formula: C₆H₁₂O₆).



Mol	Chain	Residues	Atoms			ZeroOcc	AltConf
			Total	C	O		
2	A	1	12	6	6	0	0

- Molecule 3 is nonyl beta-D-glucopyranoside (three-letter code: BNG) (formula: C₁₅H₃₀O₆).



Mol	Chain	Residues	Atoms	ZeroOcc	AltConf
3	A	1	Total C O 21 15 6	0	0
3	A	1	Total C O 21 15 6	0	0
3	A	1	Total C O 21 15 6	0	0
3	A	1	Total C O 21 15 6	0	0

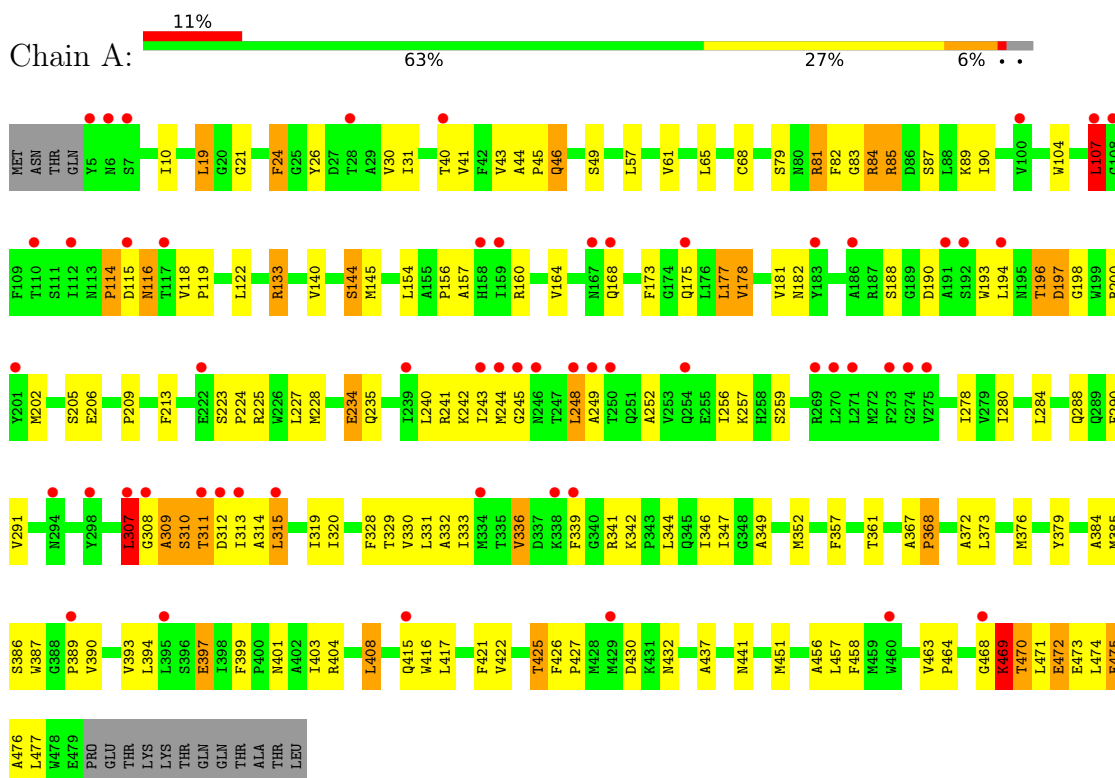
- Molecule 4 is water.

Mol	Chain	Residues	Atoms	ZeroOcc	AltConf
4	A	2	Total O 2 2	0	0

3 Residue-property plots [i](#)

These plots are drawn for all protein, RNA, DNA and oligosaccharide chains in the entry. The first graphic for a chain summarises the proportions of the various outlier classes displayed in the second graphic. The second graphic shows the sequence view annotated by issues in geometry and electron density. Residues are color-coded according to the number of geometric quality criteria for which they contain at least one outlier: green = 0, yellow = 1, orange = 2 and red = 3 or more. A red dot above a residue indicates a poor fit to the electron density ($RSRZ > 2$). Stretches of 2 or more consecutive residues without any outlier are shown as a green connector. Residues present in the sample, but not in the model, are shown in grey.

- Molecule 1: D-xylose-proton symporter



4 Data and refinement statistics

Property	Value	Source
Space group	P 43 21 2	Depositor
Cell constants a, b, c, α , β , γ	95.04Å 95.04Å 168.57Å 90.00° 90.00° 90.00°	Depositor
Resolution (Å)	38.52 – 2.89 38.52 – 2.89	Depositor EDS
% Data completeness (in resolution range)	98.1 (38.52-2.89) 98.1 (38.52-2.89)	Depositor EDS
R_{merge}	(Not available)	Depositor
R_{sym}	(Not available)	Depositor
$\langle I/\sigma(I) \rangle$ ¹	3.03 (at 2.90Å)	Xtrriage
Refinement program	PHENIX (phenix.refine: 1.7.3_928)	Depositor
R, R_{free}	0.247 , 0.289 0.236 , 0.273	Depositor DCC
R_{free} test set	898 reflections (5.12%)	wwPDB-VP
Wilson B-factor (Å ²)	86.6	Xtrriage
Anisotropy	0.456	Xtrriage
Bulk solvent k_{sol} (e/Å ³), B_{sol} (Å ²)	0.34 , 77.2	EDS
L-test for twinning ²	$\langle L \rangle = 0.48$, $\langle L^2 \rangle = 0.31$	Xtrriage
Estimated twinning fraction	No twinning to report.	Xtrriage
F_o, F_c correlation	0.92	EDS
Total number of atoms	3677	wwPDB-VP
Average B, all atoms (Å ²)	93.0	wwPDB-VP

Xtrriage's analysis on translational NCS is as follows: *The largest off-origin peak in the Patterson function is 3.31% of the height of the origin peak. No significant pseudotranslation is detected.*

¹Intensities estimated from amplitudes.

²Theoretical values of $\langle |L| \rangle$, $\langle L^2 \rangle$ for acentric reflections are 0.5, 0.333 respectively for untwinned datasets, and 0.375, 0.2 for perfectly twinned datasets.

5 Model quality [i](#)

5.1 Standard geometry [i](#)

Bond lengths and bond angles in the following residue types are not validated in this section: BNG, BGC

The Z score for a bond length (or angle) is the number of standard deviations the observed value is removed from the expected value. A bond length (or angle) with $|Z| > 5$ is considered an outlier worth inspection. RMSZ is the root-mean-square of all Z scores of the bond lengths (or angles).

Mol	Chain	Bond lengths		Bond angles	
		RMSZ	# Z >5	RMSZ	# Z >5
1	A	0.44	0/3672	0.59	1/5008 (0.0%)

There are no bond length outliers.

All (1) bond angle outliers are listed below:

Mol	Chain	Res	Type	Atoms	Z	Observed(°)	Ideal(°)
1	A	30	VAL	CB-CA-C	-5.35	101.23	111.40

There are no chirality outliers.

There are no planarity outliers.

5.2 Too-close contacts [i](#)

In the following table, the Non-H and H(model) columns list the number of non-hydrogen atoms and hydrogen atoms in the chain respectively. The H(added) column lists the number of hydrogen atoms added and optimized by MolProbity. The Clashes column lists the number of clashes within the asymmetric unit, whereas Symm-Clashes lists symmetry-related clashes.

Mol	Chain	Non-H	H(model)	H(added)	Clashes	Symm-Clashes
1	A	3579	0	3586	133	0
2	A	12	0	12	2	0
3	A	84	0	120	11	0
4	A	2	0	0	0	0
All	All	3677	0	3718	133	0

The all-atom clashscore is defined as the number of clashes found per 1000 atoms (including hydrogen atoms). The all-atom clashscore for this structure is 18.

All (133) close contacts within the same asymmetric unit are listed below, sorted by their clash

magnitude.

Atom-1	Atom-2	Interatomic distance (Å)	Clash overlap (Å)
1:A:310:SER:CB	1:A:313:ILE:HB	1.72	1.18
1:A:310:SER:HB3	1:A:313:ILE:CB	1.79	1.12
1:A:372:ALA:HB3	3:A:505:BNG:H2'2	1.41	1.01
1:A:372:ALA:CB	3:A:505:BNG:H2'2	1.98	0.93
1:A:470:THR:HG22	1:A:473:GLU:H	1.38	0.88
1:A:182:ASN:OD1	1:A:202:MET:HG2	1.75	0.86
1:A:197:ASP:OD1	3:A:504:BNG:H61	1.83	0.77
1:A:421:PHE:HA	1:A:425:THR:HG23	1.67	0.75
1:A:310:SER:HB3	1:A:313:ILE:HB	0.84	0.73
1:A:244:MET:SD	1:A:249:ALA:HA	2.32	0.70
1:A:244:MET:HB2	1:A:248:LEU:HB3	1.74	0.70
1:A:310:SER:O	1:A:314:ALA:N	2.22	0.68
1:A:307:LEU:HD23	1:A:307:LEU:N	2.10	0.66
1:A:307:LEU:N	1:A:307:LEU:CD2	2.58	0.66
1:A:307:LEU:HD23	1:A:307:LEU:H	1.62	0.65
1:A:244:MET:HG3	1:A:249:ALA:HB2	1.79	0.64
1:A:234:GLU:CG	1:A:235:GLN:N	2.60	0.64
1:A:79:SER:O	1:A:83:GLY:HA2	1.98	0.64
1:A:307:LEU:HD11	3:A:505:BNG:O2	1.99	0.62
1:A:332:ALA:O	1:A:336:VAL:HG22	2.01	0.61
1:A:157:ALA:HB1	1:A:469:LYS:O	2.02	0.60
1:A:234:GLU:HG2	1:A:235:GLN:N	2.16	0.60
1:A:193:TRP:HA	1:A:196:THR:HG22	1.84	0.60
1:A:116:ASN:O	1:A:116:ASN:ND2	2.31	0.59
1:A:470:THR:H	1:A:473:GLU:HB2	1.67	0.58
1:A:160:ARG:HE	1:A:397:GLU:HG2	1.67	0.58
1:A:441:ASN:ND2	3:A:503:BNG:O4	2.36	0.58
1:A:311:THR:HG22	1:A:312:ASP:N	2.16	0.58
1:A:315:LEU:HD22	1:A:319:ILE:HG13	1.86	0.57
1:A:164:VAL:HB	1:A:393:VAL:HG22	1.87	0.57
1:A:341:ARG:NE	1:A:397:GLU:OE1	2.28	0.57
1:A:249:ALA:O	1:A:252:ALA:HB3	2.06	0.56
1:A:390:VAL:O	1:A:394:LEU:HG	2.05	0.56
1:A:31:ILE:HD12	1:A:133:ARG:HD2	1.88	0.56
1:A:104:TRP:HE1	3:A:504:BNG:HO6	1.54	0.55
1:A:194:LEU:HA	1:A:198:GLY:HA3	1.88	0.55
1:A:437:ALA:HA	1:A:441:ASN:HB2	1.88	0.55
1:A:19:LEU:HB3	1:A:213:PHE:CD2	2.42	0.55
1:A:26:TYR:CE2	1:A:206:GLU:HB3	2.43	0.54
1:A:26:TYR:OH	1:A:205:SER:OG	2.25	0.54
1:A:122:LEU:HD11	1:A:200:ARG:NH2	2.23	0.54

Continued on next page...

Continued from previous page...

Atom-1	Atom-2	Interatomic distance (Å)	Clash overlap (Å)
1:A:234:GLU:HG2	1:A:235:GLN:H	1.70	0.54
1:A:404:ARG:NH1	1:A:471:LEU:HD13	2.23	0.54
1:A:367:ALA:O	3:A:505:BNG:H62	2.09	0.53
1:A:280:ILE:O	1:A:284:LEU:HB2	2.08	0.53
1:A:307:LEU:CD1	3:A:505:BNG:O2	2.57	0.52
1:A:309:ALA:O	1:A:310:SER:CB	2.57	0.52
1:A:470:THR:HG22	1:A:473:GLU:N	2.18	0.52
1:A:228:MET:HE1	1:A:257:LYS:HG3	1.90	0.52
1:A:349:ALA:HB3	1:A:456:ALA:HB2	1.92	0.51
1:A:386:SER:HG	1:A:387:TRP:HD1	1.51	0.51
1:A:386:SER:OG	1:A:387:TRP:CD1	2.62	0.51
1:A:206:GLU:HA	1:A:209:PRO:HD2	1.92	0.51
1:A:224:PRO:HA	1:A:227:LEU:HD12	1.92	0.51
1:A:426:PHE:HB3	1:A:427:PRO:HD3	1.93	0.51
1:A:342:LYS:O	1:A:346:ILE:HG13	2.11	0.51
1:A:342:LYS:NZ	1:A:463:VAL:O	2.38	0.51
1:A:309:ALA:O	1:A:310:SER:OG	2.29	0.50
1:A:245:GLY:O	1:A:249:ALA:HB3	2.11	0.50
1:A:330:VAL:HA	1:A:333:ILE:HD12	1.94	0.50
1:A:284:LEU:HD13	1:A:458:PHE:HE1	1.77	0.50
1:A:308:GLY:O	1:A:309:ALA:O	2.30	0.50
1:A:470:THR:HB	1:A:473:GLU:OE1	2.11	0.49
1:A:114:PRO:HG2	1:A:115:ASP:H	1.77	0.49
1:A:332:ALA:HB2	1:A:385:MET:HA	1.94	0.49
1:A:225:ARG:HD3	1:A:401:ASN:ND2	2.27	0.49
1:A:310:SER:CB	1:A:313:ILE:CB	2.59	0.49
1:A:140:VAL:O	1:A:144:SER:HB3	2.13	0.49
1:A:288:GLN:NE2	2:A:501:BGC:O1	2.46	0.48
1:A:256:ILE:O	1:A:259:SER:HB3	2.14	0.48
1:A:310:SER:O	1:A:311:THR:C	2.52	0.47
1:A:329:THR:HA	1:A:384:ALA:O	2.15	0.47
1:A:372:ALA:HB2	3:A:505:BNG:O6	2.14	0.47
1:A:352:MET:HB2	1:A:379:TYR:CD2	2.49	0.47
1:A:468:GLY:O	1:A:469:LYS:O	2.31	0.47
1:A:315:LEU:HD22	1:A:319:ILE:CD1	2.44	0.47
1:A:357:PHE:O	1:A:361:THR:HG23	2.14	0.47
1:A:241:ARG:C	1:A:243:ILE:H	2.18	0.47
1:A:244:MET:HB2	1:A:248:LEU:HD13	1.97	0.47
1:A:85:ARG:HD3	1:A:89:LYS:HE3	1.97	0.47
1:A:175:GLN:O	1:A:178:VAL:HG23	2.16	0.46
1:A:399:PHE:O	1:A:404:ARG:NH2	2.46	0.46

Continued on next page...

Continued from previous page...

Atom-1	Atom-2	Interatomic distance (Å)	Clash overlap (Å)
1:A:404:ARG:O	1:A:408:LEU:HB2	2.14	0.46
1:A:241:ARG:C	1:A:243:ILE:N	2.68	0.45
1:A:223:SER:HA	1:A:224:PRO:HD2	1.79	0.45
1:A:244:MET:CB	1:A:248:LEU:HD13	2.46	0.45
1:A:202:MET:O	1:A:205:SER:HB3	2.17	0.45
1:A:31:ILE:HD13	1:A:61:VAL:HA	1.98	0.45
1:A:154:LEU:HD11	1:A:223:SER:HA	1.98	0.45
1:A:415:GLN:NE2	2:A:501:BGC:O2	2.49	0.45
1:A:469:LYS:HG2	1:A:473:GLU:HB3	1.99	0.45
1:A:240:LEU:O	1:A:243:ILE:HB	2.15	0.45
1:A:399:PHE:O	1:A:404:ARG:NE	2.48	0.45
1:A:26:TYR:HE1	1:A:177:LEU:HD13	1.82	0.45
1:A:367:ALA:HB1	1:A:368:PRO:HD2	1.98	0.45
1:A:248:LEU:HD22	1:A:248:LEU:O	2.17	0.44
1:A:122:LEU:HD11	1:A:200:ARG:HH22	1.82	0.44
1:A:84:ARG:H	1:A:84:ARG:CD	2.31	0.44
1:A:107:LEU:HD22	3:A:502:BNG:H3'2	2.00	0.44
1:A:43:VAL:HG21	1:A:57:LEU:HB2	2.00	0.44
1:A:315:LEU:HD22	1:A:319:ILE:CG1	2.48	0.44
1:A:26:TYR:CZ	1:A:178:VAL:HG13	2.52	0.44
1:A:352:MET:HE2	1:A:379:TYR:CE2	2.53	0.44
1:A:160:ARG:O	1:A:164:VAL:HG23	2.18	0.44
1:A:241:ARG:O	1:A:243:ILE:N	2.51	0.43
1:A:404:ARG:HH12	1:A:471:LEU:HD13	1.82	0.43
1:A:469:LYS:NZ	1:A:477:LEU:HD11	2.34	0.43
1:A:244:MET:HB2	1:A:248:LEU:CD1	2.48	0.43
1:A:118:VAL:HA	1:A:119:PRO:HD3	1.71	0.43
1:A:408:LEU:HA	1:A:408:LEU:HD23	1.75	0.43
1:A:87:SER:HA	1:A:90:ILE:HD12	2.00	0.43
1:A:404:ARG:HH22	1:A:471:LEU:HB3	1.84	0.43
1:A:470:THR:HG23	1:A:472:GLU:HG2	2.00	0.42
1:A:474:LEU:O	1:A:476:ALA:N	2.53	0.42
1:A:65:LEU:HA	1:A:68:CYS:HB2	2.01	0.42
1:A:81:ARG:HD2	1:A:82:PHE:CZ	2.55	0.42
1:A:197:ASP:OD1	3:A:504:BNG:C6	2.60	0.42
1:A:26:TYR:CE2	1:A:178:VAL:HG13	2.54	0.42
1:A:177:LEU:O	1:A:181:VAL:HG23	2.20	0.42
1:A:385:MET:O	1:A:385:MET:HE2	2.20	0.42
1:A:243:ILE:O	1:A:243:ILE:HG22	2.19	0.41
1:A:344:LEU:HD23	1:A:344:LEU:HA	1.85	0.41
1:A:41:VAL:HG13	1:A:122:LEU:HB2	2.01	0.41

Continued on next page...

Continued from previous page...

Atom-1	Atom-2	Interatomic distance (Å)	Clash overlap (Å)
1:A:310:SER:CB	1:A:313:ILE:CG2	2.99	0.41
1:A:463:VAL:HA	1:A:464:PRO:HD3	1.82	0.41
1:A:10:ILE:HD11	1:A:154:LEU:O	2.21	0.41
1:A:21:GLY:O	1:A:24:PHE:HB3	2.21	0.41
1:A:114:PRO:C	1:A:116:ASN:H	2.23	0.41
1:A:290:PHE:HB3	1:A:451:MET:HG3	2.03	0.41
1:A:44:ALA:C	1:A:46:GLN:H	2.24	0.41
1:A:173:PHE:O	1:A:177:LEU:HB2	2.20	0.40
1:A:68:CYS:HB3	1:A:416:TRP:CD2	2.56	0.40
1:A:328:PHE:HB2	1:A:384:ALA:HB3	2.02	0.40

There are no symmetry-related clashes.

5.3 Torsion angles [i](#)

5.3.1 Protein backbone [i](#)

In the following table, the Percentiles column shows the percent Ramachandran outliers of the chain as a percentile score with respect to all X-ray entries followed by that with respect to entries of similar resolution.

The Analysed column shows the number of residues for which the backbone conformation was analysed, and the total number of residues.

Mol	Chain	Analysed	Favoured	Allowed	Outliers	Percentiles
1	A	473/491 (96%)	410 (87%)	47 (10%)	16 (3%)	3 15

All (16) Ramachandran outliers are listed below:

Mol	Chain	Res	Type
1	A	107	LEU
1	A	156	PRO
1	A	307	LEU
1	A	309	ALA
1	A	310	SER
1	A	469	LYS
1	A	311	THR
1	A	430	ASP
1	A	475	GLU
1	A	114	PRO
1	A	242	LYS

Continued on next page...

Continued from previous page...

Mol	Chain	Res	Type
1	A	368	PRO
1	A	84	ARG
1	A	389	PRO
1	A	397	GLU
1	A	45	PRO

5.3.2 Protein sidechains [i](#)

In the following table, the Percentiles column shows the percent sidechain outliers of the chain as a percentile score with respect to all X-ray entries followed by that with respect to entries of similar resolution.

The Analysed column shows the number of residues for which the sidechain conformation was analysed, and the total number of residues.

Mol	Chain	Analysed	Rotameric	Outliers	Percentiles
1	A	365/396 (92%)	322 (88%)	43 (12%)	5 16

All (43) residues with a non-rotameric sidechain are listed below:

Mol	Chain	Res	Type
1	A	19	LEU
1	A	24	PHE
1	A	40	THR
1	A	46	GLN
1	A	49	SER
1	A	81	ARG
1	A	85	ARG
1	A	107	LEU
1	A	116	ASN
1	A	133	ARG
1	A	144	SER
1	A	145	MET
1	A	168	GLN
1	A	177	LEU
1	A	178	VAL
1	A	188	SER
1	A	190	ASP
1	A	196	THR
1	A	197	ASP
1	A	234	GLU
1	A	248	LEU

Continued on next page...

Continued from previous page...

Mol	Chain	Res	Type
1	A	278	ILE
1	A	291	VAL
1	A	307	LEU
1	A	315	LEU
1	A	320	ILE
1	A	331	LEU
1	A	336	VAL
1	A	339	PHE
1	A	347	ILE
1	A	373	LEU
1	A	376	MET
1	A	403	ILE
1	A	408	LEU
1	A	417	LEU
1	A	422	VAL
1	A	425	THR
1	A	432	ASN
1	A	457	LEU
1	A	469	LYS
1	A	470	THR
1	A	472	GLU
1	A	475	GLU

Sometimes sidechains can be flipped to improve hydrogen bonding and reduce clashes. All (2) such sidechains are listed below:

Mol	Chain	Res	Type
1	A	415	GLN
1	A	441	ASN

5.3.3 RNA [i](#)

There are no RNA molecules in this entry.

5.4 Non-standard residues in protein, DNA, RNA chains [i](#)

There are no non-standard protein/DNA/RNA residues in this entry.

5.5 Carbohydrates [i](#)

There are no monosaccharides in this entry.

5.6 Ligand geometry

5 ligands are modelled in this entry.

In the following table, the Counts columns list the number of bonds (or angles) for which Mogul statistics could be retrieved, the number of bonds (or angles) that are observed in the model and the number of bonds (or angles) that are defined in the Chemical Component Dictionary. The Link column lists molecule types, if any, to which the group is linked. The Z score for a bond length (or angle) is the number of standard deviations the observed value is removed from the expected value. A bond length (or angle) with $|Z| > 2$ is considered an outlier worth inspection. RMSZ is the root-mean-square of all Z scores of the bond lengths (or angles).

Mol	Type	Chain	Res	Link	Bond lengths			Bond angles		
					Counts	RMSZ	# Z > 2	Counts	RMSZ	# Z > 2
3	BNG	A	504	-	21,21,21	0.44	0	26,26,26	0.60	0
3	BNG	A	502	-	21,21,21	0.46	0	26,26,26	0.60	0
3	BNG	A	505	-	21,21,21	0.48	0	26,26,26	0.59	0
3	BNG	A	503	-	21,21,21	0.46	0	26,26,26	0.61	0
2	BGC	A	501	-	12,12,12	0.46	0	17,17,17	0.52	0

In the following table, the Chirals column lists the number of chiral outliers, the number of chiral centers analysed, the number of these observed in the model and the number defined in the Chemical Component Dictionary. Similar counts are reported in the Torsion and Rings columns. '2' means no outliers of that kind were identified.

Mol	Type	Chain	Res	Link	Chirals	Torsions	Rings
3	BNG	A	504	-	-	7/12/32/32	0/1/1/1
3	BNG	A	502	-	-	7/12/32/32	0/1/1/1
3	BNG	A	505	-	-	8/12/32/32	0/1/1/1
3	BNG	A	503	-	-	8/12/32/32	0/1/1/1
2	BGC	A	501	-	-	0/2/22/22	0/1/1/1

There are no bond length outliers.

There are no bond angle outliers.

There are no chirality outliers.

All (30) torsion outliers are listed below:

Mol	Chain	Res	Type	Atoms
3	A	502	BNG	O5-C1-O1-C1'
3	A	503	BNG	O5-C1-O1-C1'
3	A	505	BNG	O5-C1-O1-C1'
3	A	505	BNG	O5-C5-C6-O6
3	A	504	BNG	O5-C1-O1-C1'

Continued on next page...

Continued from previous page...

Mol	Chain	Res	Type	Atoms
3	A	505	BNG	O1-C1'-C2'-C3'
3	A	502	BNG	C4-C5-C6-O6
3	A	503	BNG	C4'-C5'-C6'-C7'
3	A	503	BNG	C3'-C4'-C5'-C6'
3	A	505	BNG	C2'-C3'-C4'-C5'
3	A	504	BNG	C3'-C4'-C5'-C6'
3	A	503	BNG	C1'-C2'-C3'-C4'
3	A	503	BNG	O5-C5-C6-O6
3	A	505	BNG	C6'-C7'-C8'-C9'
3	A	502	BNG	C1'-C2'-C3'-C4'
3	A	502	BNG	C2-C1-O1-C1'
3	A	503	BNG	C5'-C6'-C7'-C8'
3	A	504	BNG	C1'-C2'-C3'-C4'
3	A	504	BNG	C6'-C7'-C8'-C9'
3	A	503	BNG	O1-C1'-C2'-C3'
3	A	502	BNG	O5-C5-C6-O6
3	A	505	BNG	C2'-C1'-O1-C1
3	A	505	BNG	C4-C5-C6-O6
3	A	502	BNG	C4'-C5'-C6'-C7'
3	A	502	BNG	C2'-C3'-C4'-C5'
3	A	503	BNG	C2'-C3'-C4'-C5'
3	A	504	BNG	C4-C5-C6-O6
3	A	504	BNG	O5-C5-C6-O6
3	A	504	BNG	O1-C1'-C2'-C3'
3	A	505	BNG	C4'-C5'-C6'-C7'

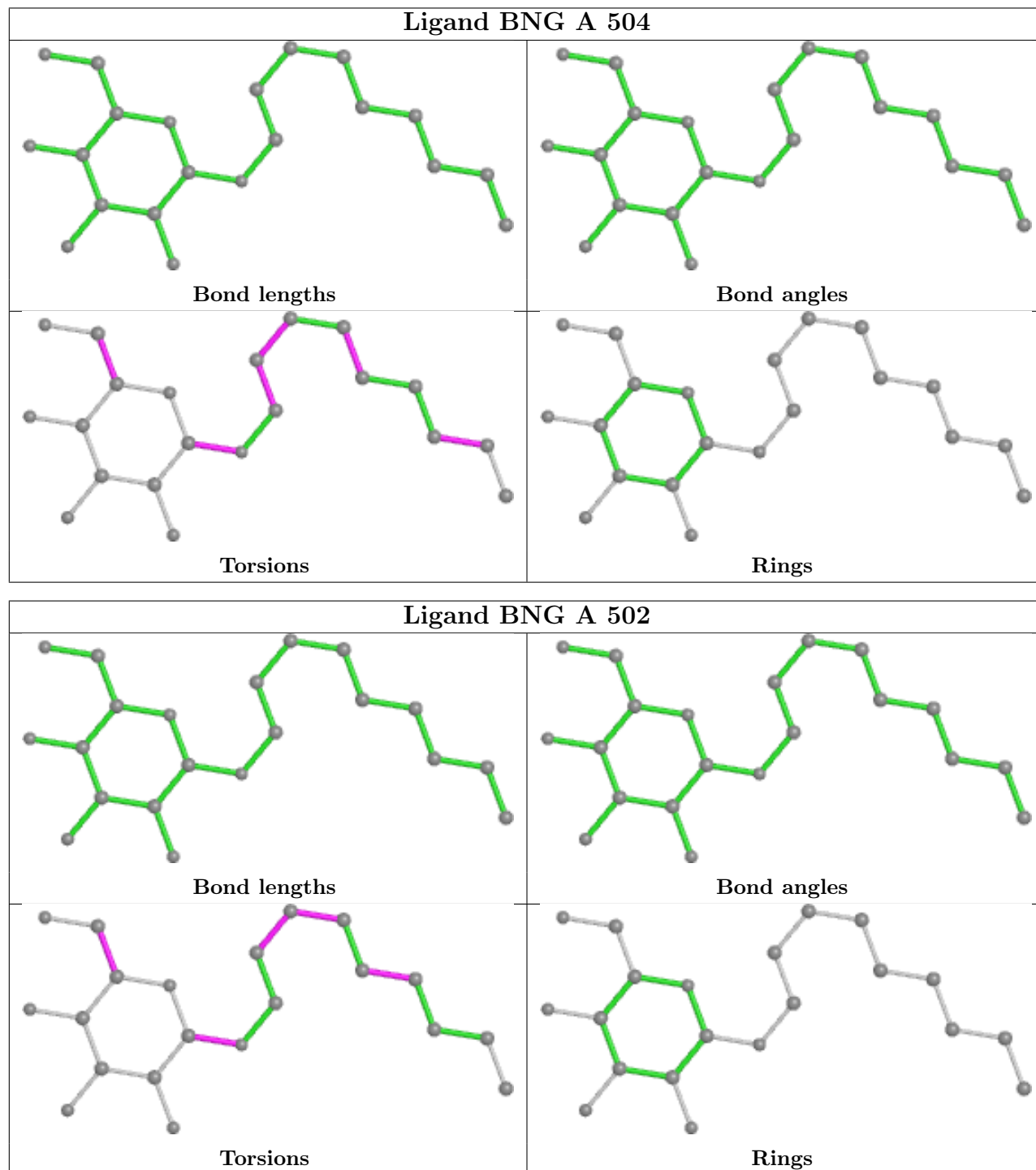
There are no ring outliers.

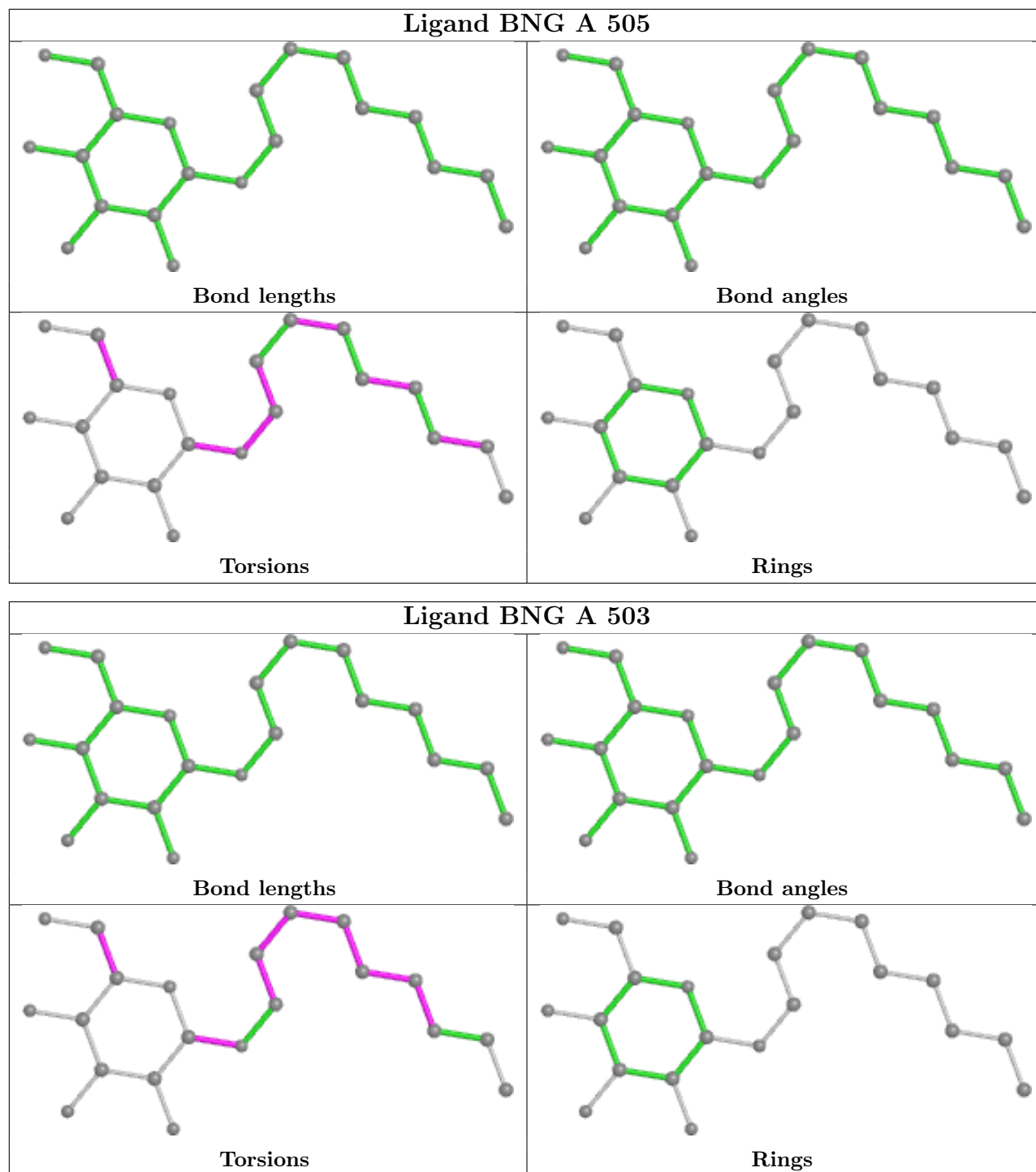
5 monomers are involved in 13 short contacts:

Mol	Chain	Res	Type	Clashes	Symm-Clashes
3	A	504	BNG	3	0
3	A	502	BNG	1	0
3	A	505	BNG	6	0
3	A	503	BNG	1	0
2	A	501	BGC	2	0

The following is a two-dimensional graphical depiction of Mogul quality analysis of bond lengths, bond angles, torsion angles, and ring geometry for all instances of the Ligand of Interest. In addition, ligands with molecular weight > 250 and outliers as shown on the validation Tables will also be included. For torsion angles, if less than 5% of the Mogul distribution of torsion angles is within 10 degrees of the torsion angle in question, then that torsion angle is considered an outlier. Any bond that is central to one or more torsion angles identified as an outlier by Mogul will be

highlighted in the graph. For rings, the root-mean-square deviation (RMSD) between the ring in question and similar rings identified by Mogul is calculated over all ring torsion angles. If the average RMSD is greater than 60 degrees and the minimal RMSD between the ring in question and any Mogul-identified rings is also greater than 60 degrees, then that ring is considered an outlier. The outliers are highlighted in purple. The color gray indicates Mogul did not find sufficient equivalents in the CSD to analyse the geometry.





5.7 Other polymers [i](#)

There are no such residues in this entry.

5.8 Polymer linkage issues [i](#)

There are no chain breaks in this entry.

6 Fit of model and data

6.1 Protein, DNA and RNA chains

In the following table, the column labelled ‘#RSRZ> 2’ contains the number (and percentage) of RSRZ outliers, followed by percent RSRZ outliers for the chain as percentile scores relative to all X-ray entries and entries of similar resolution. The OWAB column contains the minimum, median, 95th percentile and maximum values of the occupancy-weighted average B-factor per residue. The column labelled ‘Q< 0.9’ lists the number of (and percentage) of residues with an average occupancy less than 0.9.

Mol	Chain	Analysed	<RSRZ>	#RSRZ>2	OWAB(Å ²)	Q<0.9
1	A	475/491 (96%)	0.57	56 (11%) 4 3	50, 84, 162, 278	0

All (56) RSRZ outliers are listed below:

Mol	Chain	Res	Type	RSRZ
1	A	245	GLY	7.2
1	A	244	MET	6.6
1	A	273	PHE	6.6
1	A	5	TYR	6.3
1	A	115	ASP	5.2
1	A	192	SER	5.2
1	A	249	ALA	4.9
1	A	312	ASP	4.8
1	A	275	VAL	4.8
1	A	274	GLY	4.5
1	A	339	PHE	4.2
1	A	334	MET	4.2
1	A	271	LEU	4.1
1	A	468	GLY	3.9
1	A	7	SER	3.9
1	A	313	ILE	3.8
1	A	270	LEU	3.7
1	A	112	ILE	3.6
1	A	338	LYS	3.5
1	A	159	ILE	3.5
1	A	246	ASN	3.5
1	A	389	PRO	3.2
1	A	460	TRP	3.0
1	A	40	THR	2.9
1	A	175	GLN	2.9
1	A	243	ILE	2.9
1	A	191	ALA	2.8

Continued on next page...

Continued from previous page...

Mol	Chain	Res	Type	RSRZ
1	A	110	THR	2.7
1	A	28	THR	2.7
1	A	6	ASN	2.7
1	A	107	LEU	2.7
1	A	158	HIS	2.7
1	A	269	ARG	2.7
1	A	117	THR	2.6
1	A	108	GLY	2.6
1	A	250	THR	2.6
1	A	298	TYR	2.6
1	A	168	GLN	2.5
1	A	239	ILE	2.5
1	A	186	ALA	2.5
1	A	183	TYR	2.5
1	A	194	LEU	2.5
1	A	308	GLY	2.5
1	A	254	GLN	2.4
1	A	248	LEU	2.4
1	A	429	MET	2.4
1	A	307	LEU	2.3
1	A	100	VAL	2.3
1	A	222	GLU	2.3
1	A	315	LEU	2.2
1	A	395	LEU	2.2
1	A	415	GLN	2.2
1	A	201	TYR	2.1
1	A	294	ASN	2.0
1	A	311	THR	2.0
1	A	167	ASN	2.0

6.2 Non-standard residues in protein, DNA, RNA chains [i](#)

There are no non-standard protein/DNA/RNA residues in this entry.

6.3 Carbohydrates [i](#)

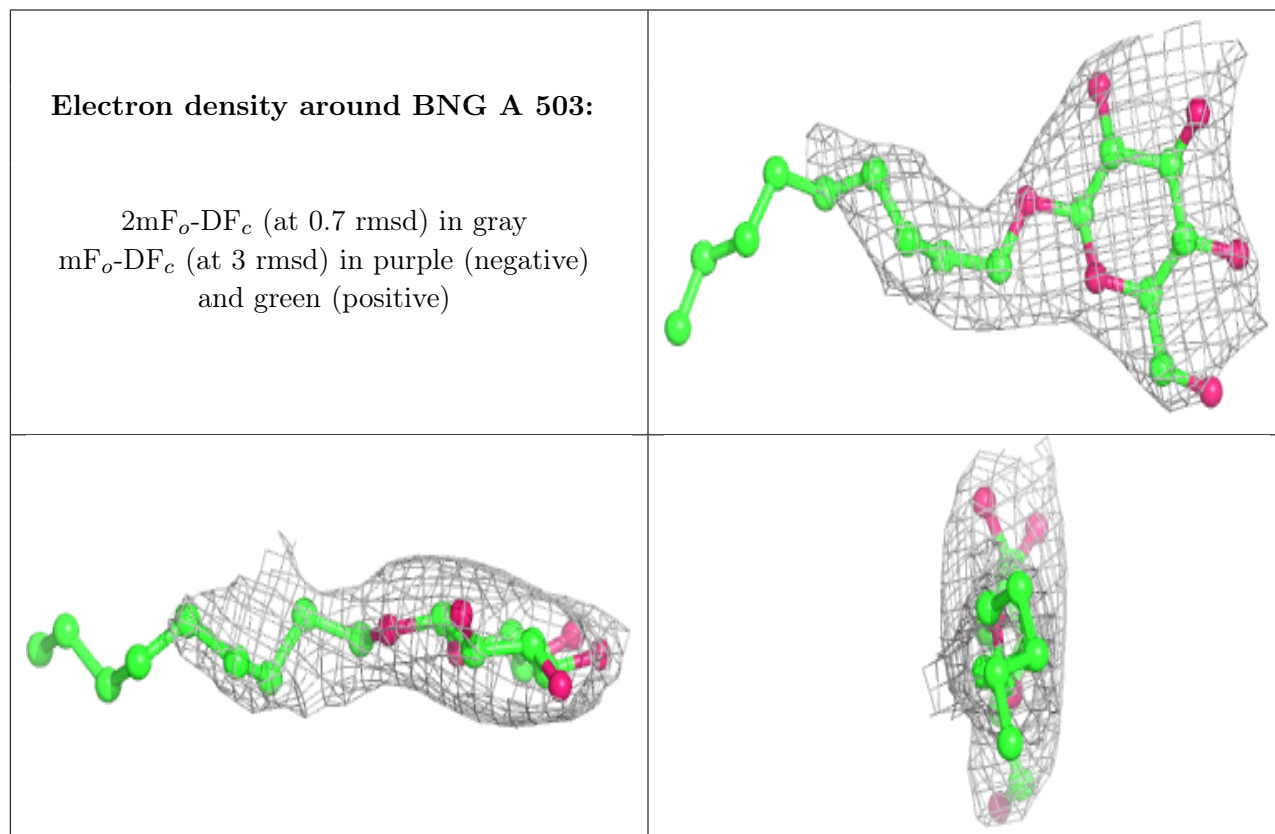
There are no monosaccharides in this entry.

6.4 Ligands [i](#)

In the following table, the Atoms column lists the number of modelled atoms in the group and the number defined in the chemical component dictionary. The B-factors column lists the minimum, median, 95th percentile and maximum values of B factors of atoms in the group. The column labelled 'Q < 0.9' lists the number of atoms with occupancy less than 0.9.

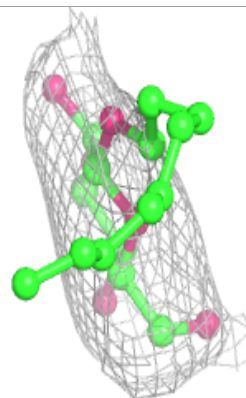
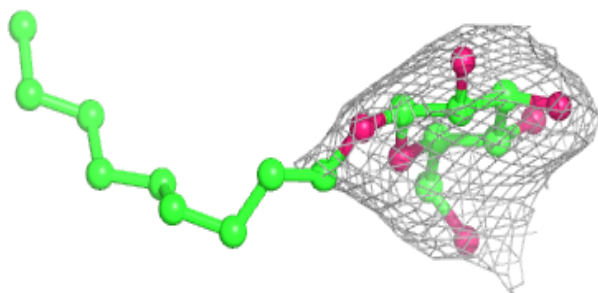
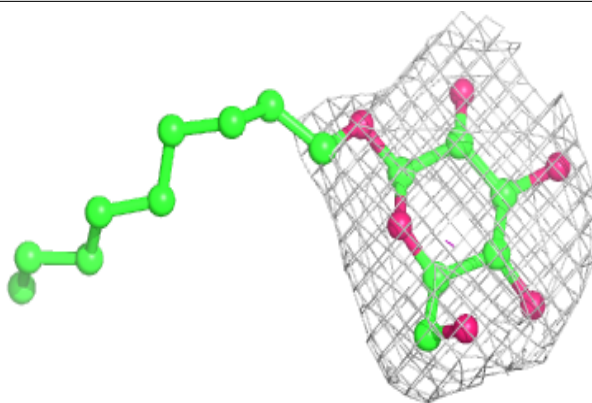
Mol	Type	Chain	Res	Atoms	RSCC	RSR	B-factors(Å ²)	Q<0.9
3	BNG	A	503	21/21	0.76	0.34	134,136,140,142	0
3	BNG	A	502	21/21	0.79	0.47	144,151,156,157	0
3	BNG	A	504	21/21	0.87	0.68	117,128,136,138	0
3	BNG	A	505	21/21	0.87	0.64	108,121,122,123	0
2	BGC	A	501	12/12	0.89	0.64	74,75,78,80	0

The following is a graphical depiction of the model fit to experimental electron density of all instances of the Ligand of Interest. In addition, ligands with molecular weight > 250 and outliers as shown on the geometry validation Tables will also be included. Each fit is shown from different orientation to approximate a three-dimensional view.

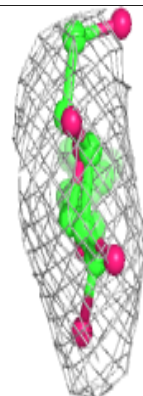
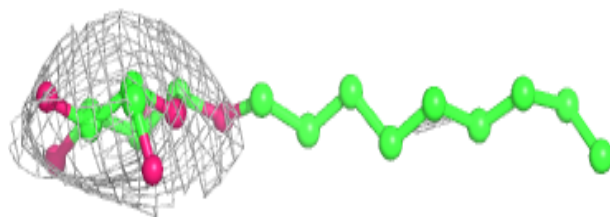
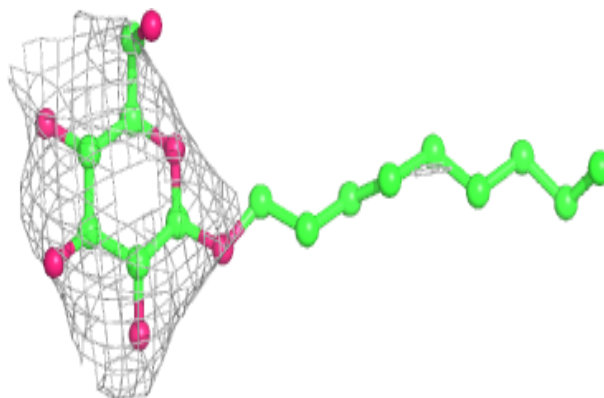


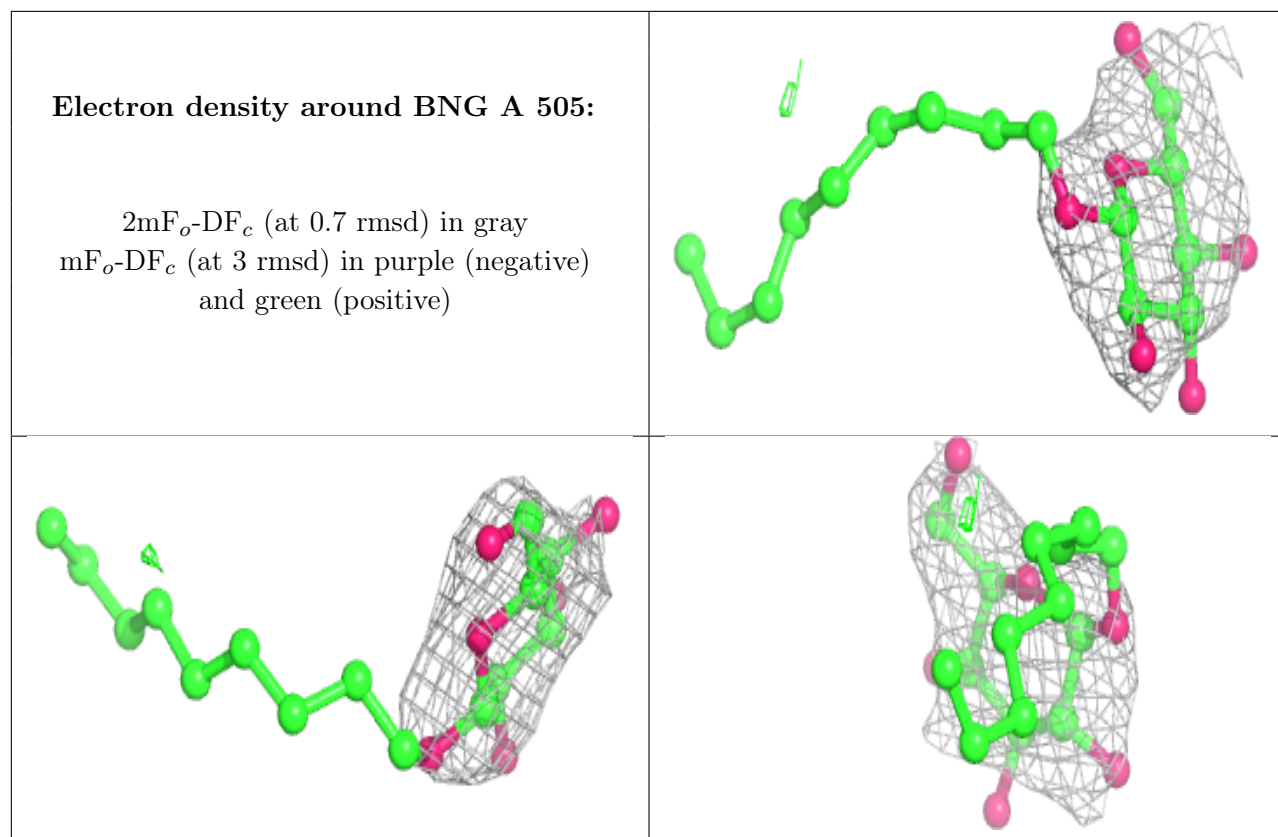
Electron density around BNG A 502:

$2mF_o-DF_c$ (at 0.7 rmsd) in gray
 mF_o-DF_c (at 3 rmsd) in purple (negative)
and green (positive)

**Electron density around BNG A 504:**

$2mF_o-DF_c$ (at 0.7 rmsd) in gray
 mF_o-DF_c (at 3 rmsd) in purple (negative)
and green (positive)





6.5 Other polymers [i](#)

There are no such residues in this entry.