



Full wwPDB X-ray Structure Validation Report ⓘ

Feb 18, 2024 – 11:28 PM EST

PDB ID : 4GFC
Title : N-terminal coiled-coil dimer of C.elegans SAS-6, crystal form B
Authors : Erat, M.C.; Vakonakis, I.
Deposited on : 2012-08-03
Resolution : 2.85 Å(reported)

This is a Full wwPDB X-ray Structure Validation Report for a publicly released PDB entry.

We welcome your comments at validation@mail.wwpdb.org

A user guide is available at

<https://www.wwpdb.org/validation/2017/XrayValidationReportHelp>

with specific help available everywhere you see the ⓘ symbol.

The types of validation reports are described at

<http://www.wwpdb.org/validation/2017/FAQs#types>.

The following versions of software and data (see [references ⓘ](#)) were used in the production of this report:

MolProbity : 4.02b-467
Mogul : 1.8.5 (274361), CSD as541be (2020)
Xtrriage (Phenix) : 1.13
EDS : 2.36
Percentile statistics : 20191225.v01 (using entries in the PDB archive December 25th 2019)
Refmac : 5.8.0158
CCP4 : 7.0.044 (Gargrove)
Ideal geometry (proteins) : Engh & Huber (2001)
Ideal geometry (DNA, RNA) : Parkinson et al. (1996)
Validation Pipeline (wwPDB-VP) : 2.36

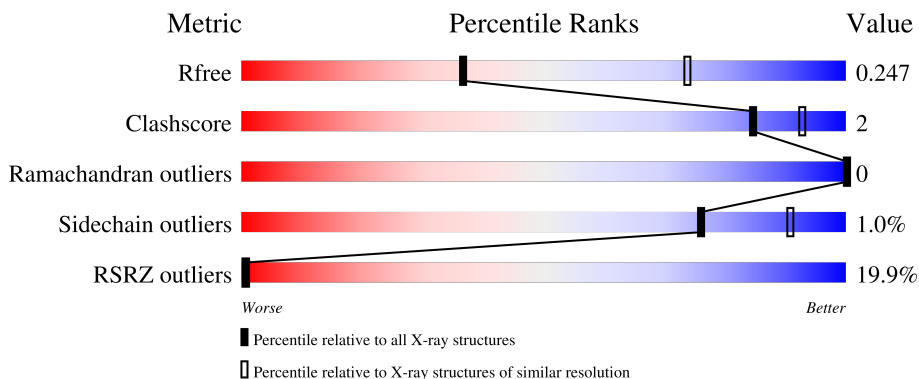
1 Overall quality at a glance

The following experimental techniques were used to determine the structure:

X-RAY DIFFRACTION

The reported resolution of this entry is 2.85 Å.

Percentile scores (ranging between 0-100) for global validation metrics of the entry are shown in the following graphic. The table shows the number of entries on which the scores are based.



Metric	Whole archive (#Entries)	Similar resolution (#Entries, resolution range(Å))
R_{free}	130704	3168 (2.90-2.82)
Clashscore	141614	3438 (2.90-2.82)
Ramachandran outliers	138981	3348 (2.90-2.82)
Sidechain outliers	138945	3351 (2.90-2.82)
RSRZ outliers	127900	3103 (2.90-2.82)

The table below summarises the geometric issues observed across the polymeric chains and their fit to the electron density. The red, orange, yellow and green segments of the lower bar indicate the fraction of residues that contain outliers for ≥ 3 , 2, 1 and 0 types of geometric quality criteria respectively. A grey segment represents the fraction of residues that are not modelled. The numeric value for each fraction is indicated below the corresponding segment, with a dot representing fractions $\leq 5\%$. The upper red bar (where present) indicates the fraction of residues that have poor fit to the electron density. The numeric value is given above the bar.

Mol	Chain	Length	Quality of chain
1	A	189	
1	B	189	

2 Entry composition [i](#)

There are 5 unique types of molecules in this entry. The entry contains 2646 atoms, of which 0 are hydrogens and 0 are deuteriums.

In the tables below, the ZeroOcc column contains the number of atoms modelled with zero occupancy, the AltConf column contains the number of residues with at least one atom in alternate conformation and the Trace column contains the number of residues modelled with at most 2 atoms.

- Molecule 1 is a protein called Spindle assembly abnormal protein 6.

Mol	Chain	Residues	Atoms					ZeroOcc	AltConf	Trace
			Total	C	N	O	S			
1	A	165	1330	856	220	251	3	0	0	0
1	B	151	1225	785	207	229	4	0	0	0

There are 6 discrepancies between the modelled and reference sequences:

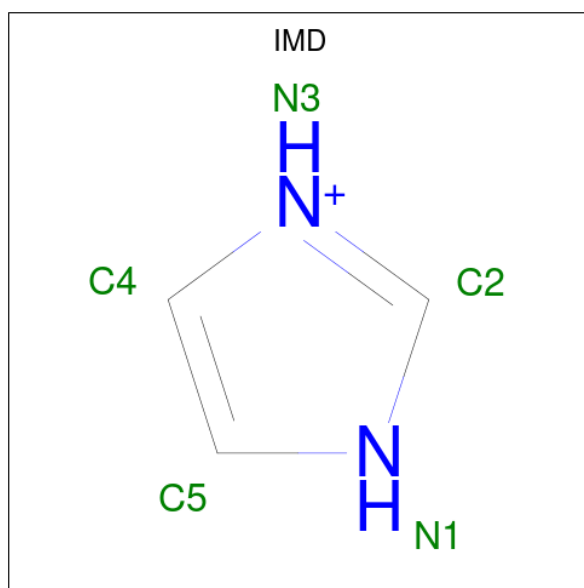
Chain	Residue	Modelled	Actual	Comment	Reference
A	-1	GLY	-	expression tag	UNP O62479
A	0	SER	-	expression tag	UNP O62479
A	126	GLY	ILE	engineered mutation	UNP O62479
B	-1	GLY	-	expression tag	UNP O62479
B	0	SER	-	expression tag	UNP O62479
B	126	GLY	ILE	engineered mutation	UNP O62479

- Molecule 2 is 1,2-ETHANEDIOL (three-letter code: EDO) (formula: C₂H₆O₂).



Mol	Chain	Residues	Atoms	ZeroOcc	AltConf
2	A	1	Total C O 4 2 2	0	0
2	A	1	Total C O 4 2 2	0	0
2	A	1	Total C O 4 2 2	0	0
2	A	1	Total C O 4 2 2	0	0
2	A	1	Total C O 4 2 2	0	0
2	A	1	Total C O 4 2 2	0	0
2	A	1	Total C O 4 2 2	0	0
2	B	1	Total C O 4 2 2	0	0

- Molecule 3 is IMIDAZOLE (three-letter code: IMD) (formula: C₃H₅N₂).



Mol	Chain	Residues	Atoms	ZeroOcc	AltConf
3	A	1	Total C N 5 3 2	0	0
3	A	1	Total C N 5 3 2	0	0

- Molecule 4 is TETRAETHYLENE GLYCOL (three-letter code: PG4) (formula: C₈H₁₈O₅).



Mol	Chain	Residues	Atoms	ZeroOcc	AltConf
4	A	1	Total C O 7 4 3	0	0
4	A	1	Total C O 4 2 2	0	0

- Molecule 5 is water.

Mol	Chain	Residues	Atoms	ZeroOcc	AltConf
5	A	30	Total O 30 30	0	0
5	B	8	Total O 8 8	0	0

4 Data and refinement statistics

Property	Value	Source
Space group	C 1 2 1	Depositor
Cell constants a, b, c, α , β , γ	103.52Å 50.72Å 101.87Å 90.00° 97.91° 90.00°	Depositor
Resolution (Å)	51.27 – 2.85 51.27 – 2.85	Depositor EDS
% Data completeness (in resolution range)	100.0 (51.27-2.85) 99.8 (51.27-2.85)	Depositor EDS
R_{merge}	(Not available)	Depositor
R_{sym}	(Not available)	Depositor
$\langle I/\sigma(I) \rangle$ ¹	2.73 (at 2.86Å)	Xtrriage
Refinement program	BUSTER 2.10.0	Depositor
R, R_{free}	0.214 , 0.236 0.223 , 0.247	Depositor DCC
R_{free} test set	601 reflections (4.81%)	wwPDB-VP
Wilson B-factor (Å ²)	73.7	Xtrriage
Anisotropy	0.573	Xtrriage
Bulk solvent k_{sol} (e/Å ³), B_{sol} (Å ²)	0.29 , 89.3	EDS
L-test for twinning ²	$\langle L \rangle = 0.50$, $\langle L^2 \rangle = 0.33$	Xtrriage
Estimated twinning fraction	No twinning to report.	Xtrriage
F_o, F_c correlation	0.92	EDS
Total number of atoms	2646	wwPDB-VP
Average B, all atoms (Å ²)	124.0	wwPDB-VP

Xtrriage's analysis on translational NCS is as follows: *The largest off-origin peak in the Patterson function is 8.16% of the height of the origin peak. No significant pseudotranslation is detected.*

¹Intensities estimated from amplitudes.

²Theoretical values of $\langle |L| \rangle$, $\langle L^2 \rangle$ for acentric reflections are 0.5, 0.333 respectively for untwinned datasets, and 0.375, 0.2 for perfectly twinned datasets.

5 Model quality

5.1 Standard geometry

Bond lengths and bond angles in the following residue types are not validated in this section: IMD, EDO, PG4

The Z score for a bond length (or angle) is the number of standard deviations the observed value is removed from the expected value. A bond length (or angle) with $|Z| > 5$ is considered an outlier worth inspection. RMSZ is the root-mean-square of all Z scores of the bond lengths (or angles).

Mol	Chain	Bond lengths		Bond angles	
		RMSZ	# Z >5	RMSZ	# Z >5
1	A	0.55	0/1351	0.72	0/1812
1	B	0.44	0/1241	0.63	0/1661
All	All	0.50	0/2592	0.68	0/3473

There are no bond length outliers.

There are no bond angle outliers.

There are no chirality outliers.

There are no planarity outliers.

5.2 Too-close contacts

In the following table, the Non-H and H(model) columns list the number of non-hydrogen atoms and hydrogen atoms in the chain respectively. The H(added) column lists the number of hydrogen atoms added and optimized by MolProbity. The Clashes column lists the number of clashes within the asymmetric unit, whereas Symm-Clashes lists symmetry-related clashes.

Mol	Chain	Non-H	H(model)	H(added)	Clashes	Symm-Clashes
1	A	1330	0	1359	11	0
1	B	1225	0	1254	3	0
2	A	28	0	42	5	0
2	B	4	0	6	0	0
3	A	10	0	10	0	0
4	A	11	0	13	0	0
5	A	30	0	0	0	0
5	B	8	0	0	0	0
All	All	2646	0	2684	12	0

The all-atom clashscore is defined as the number of clashes found per 1000 atoms (including hydrogen atoms). The all-atom clashscore for this structure is 2.

All (12) close contacts within the same asymmetric unit are listed below, sorted by their clash magnitude.

Atom-1	Atom-2	Interatomic distance (Å)	Clash overlap (Å)
1:A:8:PHE:HA	2:A:210:EDO:H22	1.71	0.72
1:A:130:LYS:HB3	2:A:211:EDO:H12	1.84	0.58
1:A:61:PHE:HD1	1:A:151:ILE:HD13	1.74	0.53
1:A:130:LYS:HE2	1:A:133:SER:HB2	1.92	0.52
1:A:93:VAL:HG11	2:A:202:EDO:H12	1.97	0.47
1:A:20:LEU:HD23	1:A:28:LYS:HB3	1.98	0.46
1:B:18:GLN:HB3	1:B:109:LEU:HD12	1.98	0.45
1:A:158:LYS:HE2	1:B:158:LYS:HE2	2.01	0.42
1:A:98:LEU:CD2	1:A:105:ILE:HD11	2.50	0.42
1:A:142:ASP:OD1	1:B:140:ARG:NH2	2.53	0.41
1:A:88:ASP:HA	2:A:203:EDO:H12	2.03	0.41
1:A:91:PRO:HG3	2:A:203:EDO:H11	2.02	0.41

There are no symmetry-related clashes.

5.3 Torsion angles [i](#)

5.3.1 Protein backbone [i](#)

In the following table, the Percentiles column shows the percent Ramachandran outliers of the chain as a percentile score with respect to all X-ray entries followed by that with respect to entries of similar resolution.

The Analysed column shows the number of residues for which the backbone conformation was analysed, and the total number of residues.

Mol	Chain	Analysed	Favoured	Allowed	Outliers	Percentiles	
1	A	159/189 (84%)	153 (96%)	6 (4%)	0	100	100
1	B	143/189 (76%)	139 (97%)	4 (3%)	0	100	100
All	All	302/378 (80%)	292 (97%)	10 (3%)	0	100	100

There are no Ramachandran outliers to report.

5.3.2 Protein sidechains [i](#)

In the following table, the Percentiles column shows the percent sidechain outliers of the chain as a percentile score with respect to all X-ray entries followed by that with respect to entries of similar resolution.

The Analysed column shows the number of residues for which the sidechain conformation was analysed, and the total number of residues.

Mol	Chain	Analysed	Rotameric	Outliers	Percentiles	
1	A	152/173 (88%)	150 (99%)	2 (1%)	69	88
1	B	139/173 (80%)	138 (99%)	1 (1%)	84	94
All	All	291/346 (84%)	288 (99%)	3 (1%)	76	91

All (3) residues with a non-rotameric sidechain are listed below:

Mol	Chain	Res	Type
1	A	22	LEU
1	A	105	ILE
1	B	116	CYS

Sometimes sidechains can be flipped to improve hydrogen bonding and reduce clashes. There are no such sidechains identified.

5.3.3 RNA [i](#)

There are no RNA molecules in this entry.

5.4 Non-standard residues in protein, DNA, RNA chains [i](#)

There are no non-standard protein/DNA/RNA residues in this entry.

5.5 Carbohydrates [i](#)

There are no monosaccharides in this entry.

5.6 Ligand geometry [i](#)

12 ligands are modelled in this entry.

In the following table, the Counts columns list the number of bonds (or angles) for which Mogul statistics could be retrieved, the number of bonds (or angles) that are observed in the model and the number of bonds (or angles) that are defined in the Chemical Component Dictionary. The Link column lists molecule types, if any, to which the group is linked. The Z score for a bond length (or angle) is the number of standard deviations the observed value is removed from the expected value. A bond length (or angle) with $|Z| > 2$ is considered an outlier worth inspection. RMSZ is the root-mean-square of all Z scores of the bond lengths (or angles).

Mol	Type	Chain	Res	Link	Bond lengths			Bond angles		
					Counts	RMSZ	# Z > 2	Counts	RMSZ	# Z > 2
4	PG4	A	208	-	3,3,12	0.23	0	2,2,11	0.12	0
2	EDO	A	204	-	3,3,3	0.59	0	2,2,2	0.34	0
2	EDO	B	201	-	3,3,3	0.64	0	2,2,2	0.17	0
3	IMD	A	205	-	3,5,5	0.40	0	4,5,5	0.71	0
2	EDO	A	202	-	3,3,3	0.77	0	2,2,2	0.21	0
2	EDO	A	210	-	3,3,3	0.72	0	2,2,2	0.23	0
2	EDO	A	209	-	3,3,3	0.61	0	2,2,2	0.17	0
4	PG4	A	207	-	6,6,12	0.26	0	5,5,11	0.22	0
3	IMD	A	206	-	3,5,5	0.38	0	4,5,5	0.72	0
2	EDO	A	203	-	3,3,3	1.03	0	2,2,2	0.26	0
2	EDO	A	211	-	3,3,3	0.62	0	2,2,2	0.23	0
2	EDO	A	201	-	3,3,3	0.76	0	2,2,2	0.28	0

In the following table, the Chirals column lists the number of chiral outliers, the number of chiral centers analysed, the number of these observed in the model and the number defined in the Chemical Component Dictionary. Similar counts are reported in the Torsion and Rings columns. '-' means no outliers of that kind were identified.

Mol	Type	Chain	Res	Link	Chirals	Torsions	Rings
4	PG4	A	208	-	-	1/1/1/10	-
2	EDO	A	204	-	-	1/1/1/1	-
2	EDO	B	201	-	-	0/1/1/1	-
3	IMD	A	205	-	-	-	0/1/1/1
2	EDO	A	202	-	-	1/1/1/1	-
2	EDO	A	210	-	-	1/1/1/1	-
2	EDO	A	209	-	-	0/1/1/1	-
4	PG4	A	207	-	-	1/4/4/10	-
3	IMD	A	206	-	-	-	0/1/1/1
2	EDO	A	203	-	-	0/1/1/1	-
2	EDO	A	211	-	-	0/1/1/1	-
2	EDO	A	201	-	-	1/1/1/1	-

There are no bond length outliers.

There are no bond angle outliers.

There are no chirality outliers.

All (6) torsion outliers are listed below:

Mol	Chain	Res	Type	Atoms
2	A	204	EDO	O1-C1-C2-O2
4	A	207	PG4	C4-C3-O2-C2
2	A	201	EDO	O1-C1-C2-O2

Continued on next page...

Continued from previous page...

Mol	Chain	Res	Type	Atoms
2	A	202	EDO	O1-C1-C2-O2
4	A	208	PG4	O2-C3-C4-O3
2	A	210	EDO	O1-C1-C2-O2

There are no ring outliers.

4 monomers are involved in 5 short contacts:

Mol	Chain	Res	Type	Clashes	Symm-Clashes
2	A	202	EDO	1	0
2	A	210	EDO	1	0
2	A	203	EDO	2	0
2	A	211	EDO	1	0

5.7 Other polymers [i](#)

There are no such residues in this entry.

5.8 Polymer linkage issues [i](#)

There are no chain breaks in this entry.

6 Fit of model and data [i](#)

6.1 Protein, DNA and RNA chains [i](#)

In the following table, the column labelled ‘#RSRZ > 2’ contains the number (and percentage) of RSRZ outliers, followed by percent RSRZ outliers for the chain as percentile scores relative to all X-ray entries and entries of similar resolution. The OWAB column contains the minimum, median, 95th percentile and maximum values of the occupancy-weighted average B-factor per residue. The column labelled ‘Q < 0.9’ lists the number of (and percentage) of residues with an average occupancy less than 0.9.

Mol	Chain	Analysed	<RSRZ>	#RSRZ>2	OWAB(Å ²)	Q<0.9
1	A	165/189 (87%)	0.36	7 (4%) 36 31	45, 69, 171, 257	0
1	B	151/189 (79%)	1.79	56 (37%) 0 0	71, 187, 213, 233	0
All	All	316/378 (83%)	1.04	63 (19%) 1 1	45, 110, 212, 257	0

All (63) RSRZ outliers are listed below:

Mol	Chain	Res	Type	RSRZ
1	B	105	ILE	11.8
1	B	118	PHE	8.9
1	B	84	THR	8.1
1	B	14	ALA	6.8
1	B	9	ASP	6.4
1	B	160	SER	6.0
1	B	16	LEU	5.9
1	B	69	LEU	5.6
1	B	134	ILE	5.3
1	B	98	LEU	5.3
1	B	107	ILE	5.3
1	A	168	GLU	5.0
1	B	36	LEU	4.6
1	B	5	ILE	4.6
1	B	73	LYS	4.5
1	B	77	LEU	4.5
1	B	34	VAL	4.4
1	B	4	LYS	4.2
1	A	165	SER	4.2
1	B	172	LEU	4.1
1	B	90	PHE	4.0
1	B	102	ASN	3.9
1	B	85	VAL	3.6
1	B	76	ILE	3.6

Continued on next page...

Continued from previous page...

Mol	Chain	Res	Type	RSRZ
1	B	70	ASN	3.5
1	B	7	LEU	3.5
1	B	179	LEU	3.3
1	B	163	TYR	3.3
1	B	106	ASN	3.2
1	B	53	PHE	3.2
1	B	37	LYS	3.2
1	A	161	THR	3.2
1	B	63	PHE	3.1
1	B	8	PHE	3.1
1	B	162	PHE	3.0
1	B	104	GLU	2.9
1	B	32	THR	2.9
1	B	72	GLU	2.8
1	B	39	SER	2.8
1	B	52	LYS	2.8
1	B	101	LYS	2.8
1	A	166	ALA	2.7
1	B	41	GLN	2.6
1	B	31	LYS	2.5
1	B	91	PRO	2.5
1	B	68	THR	2.5
1	B	3	SER	2.4
1	B	51	LEU	2.4
1	B	30	TYR	2.4
1	B	71	ASN	2.3
1	B	89	ALA	2.3
1	B	15	SER	2.3
1	B	12	LEU	2.3
1	B	55	ILE	2.2
1	B	58	SER	2.2
1	B	75	GLN	2.1
1	A	159	LEU	2.1
1	B	181	LYS	2.1
1	B	33	LYS	2.1
1	B	159	LEU	2.1
1	A	170	ALA	2.0
1	A	167	ASP	2.0
1	B	180	GLU	2.0

6.2 Non-standard residues in protein, DNA, RNA chains [i](#)

There are no non-standard protein/DNA/RNA residues in this entry.

6.3 Carbohydrates [i](#)

There are no monosaccharides in this entry.

6.4 Ligands [i](#)

In the following table, the Atoms column lists the number of modelled atoms in the group and the number defined in the chemical component dictionary. The B-factors column lists the minimum, median, 95th percentile and maximum values of B factors of atoms in the group. The column labelled 'Q< 0.9' lists the number of atoms with occupancy less than 0.9.

Mol	Type	Chain	Res	Atoms	RSCC	RSR	B-factors(\AA^2)	Q<0.9
2	EDO	A	209	4/4	0.63	0.23	101,101,102,103	0
2	EDO	A	203	4/4	0.82	0.25	72,76,77,79	0
4	PG4	A	208	4/13	0.82	0.18	113,116,117,118	0
2	EDO	B	201	4/4	0.84	0.07	117,118,118,118	0
3	IMD	A	205	5/5	0.85	0.74	138,138,139,139	0
2	EDO	A	211	4/4	0.86	0.24	99,100,100,100	0
2	EDO	A	201	4/4	0.87	0.22	82,83,84,86	0
2	EDO	A	210	4/4	0.87	0.27	66,69,71,72	0
4	PG4	A	207	7/13	0.88	0.29	73,75,79,79	0
2	EDO	A	204	4/4	0.89	0.56	89,91,95,98	0
3	IMD	A	206	5/5	0.92	0.21	88,88,89,90	0
2	EDO	A	202	4/4	0.93	0.28	61,63,69,74	0

6.5 Other polymers [i](#)

There are no such residues in this entry.