



wwPDB X-ray Structure Validation Summary Report ⓘ

Jun 24, 2024 – 01:00 PM EDT

PDB ID : 6GFE
Title : High-resolution Structure of a therapeutic full-length anti-NPRA Antibody with exceptional Conformational Diversity
Authors : Hoerer, S.
Deposited on : 2018-04-30
Resolution : 1.80 Å (reported)

This is a wwPDB X-ray Structure Validation Summary Report for a publicly released PDB entry.

We welcome your comments at validation@mail.wwpdb.org

A user guide is available at

<https://www.wwpdb.org/validation/2017/XrayValidationReportHelp>

with specific help available everywhere you see the ⓘ symbol.

The types of validation reports are described at

<http://www.wwpdb.org/validation/2017/FAQs#types>.

The following versions of software and data (see [references ⓘ](#)) were used in the production of this report:

MolProbity : 4.02b-467
Mogul : 1.8.5 (274361), CSD as541be (2020)
Xtriage (Phenix) : 1.13
EDS : 2.37.1
Percentile statistics : 20191225.v01 (using entries in the PDB archive December 25th 2019)
Refmac : 5.8.0158
CCP4 : 7.0.044 (Gargrove)
Ideal geometry (proteins) : Engh & Huber (2001)
Ideal geometry (DNA, RNA) : Parkinson et al. (1996)
Validation Pipeline (wwPDB-VP) : 2.37.1

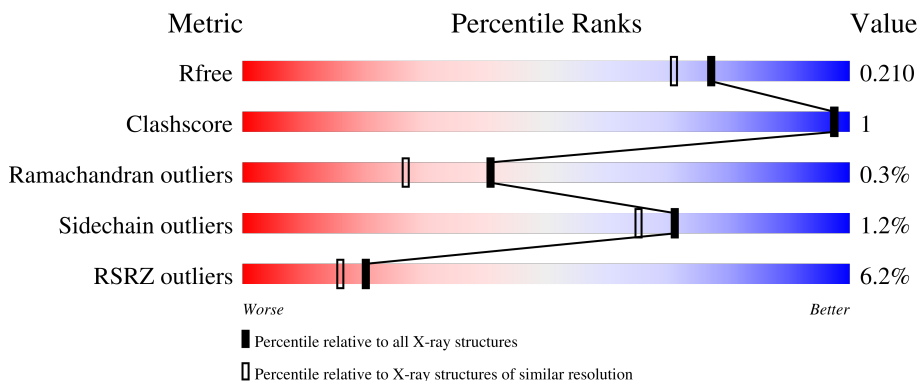
1 Overall quality at a glance

The following experimental techniques were used to determine the structure:

X-RAY DIFFRACTION

The reported resolution of this entry is 1.80 Å.

Percentile scores (ranging between 0-100) for global validation metrics of the entry are shown in the following graphic. The table shows the number of entries on which the scores are based.



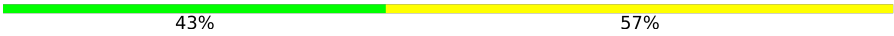
Metric	Whole archive (#Entries)	Similar resolution (#Entries, resolution range(Å))
R_{free}	130704	5950 (1.80-1.80)
Clashscore	141614	6793 (1.80-1.80)
Ramachandran outliers	138981	6697 (1.80-1.80)
Sidechain outliers	138945	6696 (1.80-1.80)
RSRZ outliers	127900	5850 (1.80-1.80)

The table below summarises the geometric issues observed across the polymeric chains and their fit to the electron density. The red, orange, yellow and green segments of the lower bar indicate the fraction of residues that contain outliers for ≥ 3 , 2, 1 and 0 types of geometric quality criteria respectively. A grey segment represents the fraction of residues that are not modelled. The numeric value for each fraction is indicated below the corresponding segment, with a dot representing fractions $\leq 5\%$. The upper red bar (where present) indicates the fraction of residues that have poor fit to the electron density. The numeric value is given above the bar.

Mol	Chain	Length	Quality of chain
1	H	450	 10% 90% 6% 5%
1	K	450	 4% 91% 5% 5%
2	L	215	 % 97% .
2	M	215	 6% 98% .
3	A	7	 71% 29%

Continued on next page...

Continued from previous page...

Mol	Chain	Length	Quality of chain
3	B	7	 43% 57%

2 Entry composition i

There are 6 unique types of molecules in this entry. The entry contains 11641 atoms, of which 0 are hydrogens and 0 are deuteriums.

In the tables below, the ZeroOcc column contains the number of atoms modelled with zero occupancy, the AltConf column contains the number of residues with at least one atom in alternate conformation and the Trace column contains the number of residues modelled with at most 2 atoms.

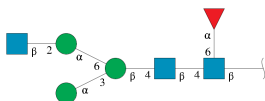
- Molecule 1 is a protein called Immunoglobulin gamma-4 heavy chain.

Mol	Chain	Residues	Atoms					ZeroOcc	AltConf	Trace
			Total	C	N	O	S			
1	H	429	Total 3405	C 2148	N 574	O 666	S 17	6	7	0
1	K	426	Total 3400	C 2143	N 573	O 665	S 19	6	10	0

- Molecule 2 is a protein called Immunoglobulin gamma-4 light chain.

Mol	Chain	Residues	Atoms					ZeroOcc	AltConf	Trace
			Total	C	N	O	S			
2	L	215	Total 1703	C 1056	N 293	O 347	S 7	0	9	0
2	M	215	Total 1662	C 1035	N 285	O 335	S 7	6	3	0

- Molecule 3 is an oligosaccharide called 2-acetamido-2-deoxy-beta-D-glucopyranose-(1-2)-alpha-D-mannopyranose-(1-6)-[alpha-D-mannopyranose-(1-3)]beta-D-mannopyranose-(1-4)-2-acetamido-2-deoxy-beta-D-glucopyranose-(1-4)-[alpha-L-fucopyranose-(1-6)]2-acetamido-2-deoxy-beta-D-glucopyranose.

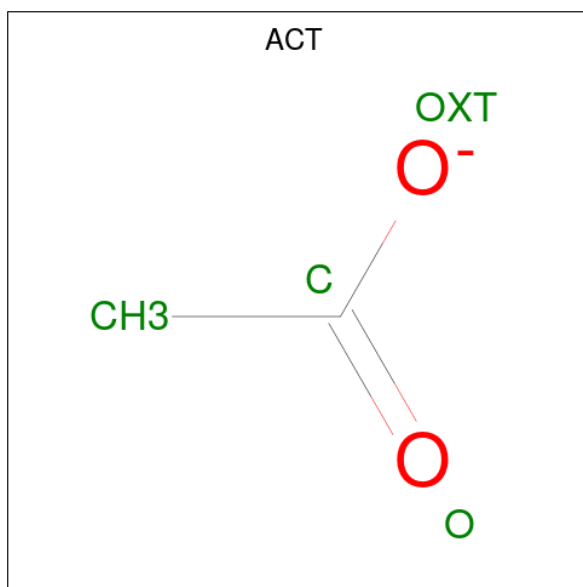


Mol	Chain	Residues	Atoms				ZeroOcc	AltConf	Trace
			Total	C	N	O			
3	A	7	Total 85	C 48	N 3	O 34	0	0	0
3	B	7	Total 85	C 48	N 3	O 34	0	0	0

- Molecule 4 is CALCIUM ION (three-letter code: CA) (formula: Ca).

Mol	Chain	Residues	Atoms	ZeroOcc	AltConf
4	H	1	Total Ca 1 1	0	0
4	K	1	Total Ca 1 1	0	0

- Molecule 5 is ACETATE ION (three-letter code: ACT) (formula: C₂H₃O₂).



Mol	Chain	Residues	Atoms	ZeroOcc	AltConf
5	K	1	Total C O 4 2 2	0	0
5	L	1	Total C O 4 2 2	0	0
5	L	1	Total C O 4 2 2	0	0

- Molecule 6 is water.

Mol	Chain	Residues	Atoms	ZeroOcc	AltConf
6	H	372	Total O 372 372	0	1
6	K	493	Total O 494 494	0	2
6	L	249	Total O 249 249	0	0
6	M	172	Total O 172 172	0	0

nose-(1-4)-[alpha-L-fucopyranose-(1-6)]2-acetamido-2-deoxy-beta-D-glucopyranose

Chain A:  71% 29%



● Molecule 3: 2-acetamido-2-deoxy-beta-D-glucopyranose-(1-2)-alpha-D-mannopyranose-(1-6)-[alpha-D-mannopyranose-(1-3)]beta-D-mannopyranose-(1-4)-2-acetamido-2-deoxy-beta-D-glucopyranose-(1-4)-[alpha-L-fucopyranose-(1-6)]2-acetamido-2-deoxy-beta-D-glucopyranose

Chain B:  43% 57%



4 Data and refinement statistics

Property	Value	Source
Space group	P 1 21 1	Depositor
Cell constants a, b, c, α , β , γ	65.78Å 160.51Å 87.30Å 90.00° 110.72° 90.00°	Depositor
Resolution (Å)	40.00 – 1.80 39.57 – 1.80	Depositor EDS
% Data completeness (in resolution range)	99.5 (40.00-1.80) 99.5 (39.57-1.80)	Depositor EDS
R_{merge}	0.05	Depositor
R_{sym}	(Not available)	Depositor
$\langle I/\sigma(I) \rangle$ ¹	1.79 (at 1.79Å)	Xtrriage
Refinement program	BUSTER 2.11.5	Depositor
R, R_{free}	0.181 , 0.200 0.189 , 0.210	Depositor DCC
R_{free} test set	7796 reflections (5.02%)	wwPDB-VP
Wilson B-factor (Å ²)	25.3	Xtrriage
Anisotropy	0.297	Xtrriage
Bulk solvent k_{sol} (e/Å ³), B_{sol} (Å ²)	0.32 , 46.4	EDS
L-test for twinning ²	$\langle L \rangle = 0.48$, $\langle L^2 \rangle = 0.30$	Xtrriage
Estimated twinning fraction	0.026 for h,-k,-h-l	Xtrriage
F_o, F_c correlation	0.96	EDS
Total number of atoms	11641	wwPDB-VP
Average B, all atoms (Å ²)	35.0	wwPDB-VP

Xtrriage's analysis on translational NCS is as follows: *The largest off-origin peak in the Patterson function is 3.98% of the height of the origin peak. No significant pseudotranslation is detected.*

¹Intensities estimated from amplitudes.

²Theoretical values of $\langle |L| \rangle$, $\langle L^2 \rangle$ for acentric reflections are 0.5, 0.333 respectively for untwinned datasets, and 0.375, 0.2 for perfectly twinned datasets.

5 Model quality [i](#)

5.1 Standard geometry [i](#)

Bond lengths and bond angles in the following residue types are not validated in this section: FUC, CA, ACT, NAG, BMA, MAN

The Z score for a bond length (or angle) is the number of standard deviations the observed value is removed from the expected value. A bond length (or angle) with $|Z| > 5$ is considered an outlier worth inspection. RMSZ is the root-mean-square of all Z scores of the bond lengths (or angles).

Mol	Chain	Bond lengths		Bond angles	
		RMSZ	# Z >5	RMSZ	# Z >5
1	H	0.41	0/3496	0.61	0/4762
1	K	0.42	0/3488	0.61	0/4754
2	L	0.41	0/1738	0.61	0/2362
2	M	0.40	0/1701	0.62	0/2311
All	All	0.41	0/10423	0.61	0/14189

There are no bond length outliers.

There are no bond angle outliers.

There are no chirality outliers.

There are no planarity outliers.

5.2 Too-close contacts [i](#)

In the following table, the Non-H and H(model) columns list the number of non-hydrogen atoms and hydrogen atoms in the chain respectively. The H(added) column lists the number of hydrogen atoms added and optimized by MolProbity. The Clashes column lists the number of clashes within the asymmetric unit, whereas Symm-Clashes lists symmetry-related clashes.

Mol	Chain	Non-H	H(model)	H(added)	Clashes	Symm-Clashes
1	H	3405	0	3303	7	0
1	K	3400	0	3285	5	0
2	L	1703	0	1648	2	0
2	M	1662	0	1612	3	0
3	A	85	0	73	0	0
3	B	85	0	73	0	0
4	H	1	0	0	0	0
4	K	1	0	0	0	0
5	K	4	0	3	0	0

Continued on next page...

Continued from previous page...

Mol	Chain	Non-H	H(model)	H(added)	Clashes	Symm-Clashes
5	L	8	0	6	0	0
6	H	372	0	0	0	0
6	K	494	0	0	0	0
6	L	249	0	0	0	0
6	M	172	0	0	0	0
All	All	11641	0	10003	17	0

The all-atom clashscore is defined as the number of clashes found per 1000 atoms (including hydrogen atoms). The all-atom clashscore for this structure is 1.

The worst 5 of 17 close contacts within the same asymmetric unit are listed below, sorted by their clash magnitude.

Atom-1	Atom-2	Interatomic distance (Å)	Clash overlap (Å)
1:H:346:PRO:HB3	1:H:372:PHE:HB3	1.78	0.66
1:H:278:TYR:HB2	1:H:320:LYS:HB3	1.85	0.59
1:K:127:PRO:HD3	1:K:213:LYS:HE2	1.85	0.58
1:H:3:GLU:HG3	1:H:25:SER:HB2	1.87	0.56
1:H:314:LEU:HD23	1:H:338:LYS:HE3	1.89	0.54

There are no symmetry-related clashes.

5.3 Torsion angles [i](#)

5.3.1 Protein backbone [i](#)

In the following table, the Percentiles column shows the percent Ramachandran outliers of the chain as a percentile score with respect to all X-ray entries followed by that with respect to entries of similar resolution.

The Analysed column shows the number of residues for which the backbone conformation was analysed, and the total number of residues.

Mol	Chain	Analysed	Favoured	Allowed	Outliers	Percentiles	
1	H	430/450 (96%)	423 (98%)	4 (1%)	3 (1%)	22	10
1	K	430/450 (96%)	425 (99%)	4 (1%)	1 (0%)	47	33
2	L	222/215 (103%)	217 (98%)	5 (2%)	0	100	100
2	M	216/215 (100%)	211 (98%)	5 (2%)	0	100	100
All	All	1298/1330 (98%)	1276 (98%)	18 (1%)	4 (0%)	41	27

All (4) Ramachandran outliers are listed below:

Mol	Chain	Res	Type
1	H	97	VAL
1	H	272	GLU
1	K	97	VAL
1	H	271	PRO

5.3.2 Protein sidechains [i](#)

In the following table, the Percentiles column shows the percent sidechain outliers of the chain as a percentile score with respect to all X-ray entries followed by that with respect to entries of similar resolution.

The Analysed column shows the number of residues for which the sidechain conformation was analysed, and the total number of residues.

Mol	Chain	Analysed	Rotameric	Outliers	Percentiles
1	H	398/408 (98%)	389 (98%)	9 (2%)	50 37
1	K	398/408 (98%)	394 (99%)	4 (1%)	76 71
2	L	195/186 (105%)	193 (99%)	2 (1%)	76 71
2	M	189/186 (102%)	189 (100%)	0	100 100
All	All	1180/1188 (99%)	1165 (99%)	15 (1%)	71 62

5 of 15 residues with a non-rotameric sidechain are listed below:

Mol	Chain	Res	Type
1	H	328	LEU
2	L	45	ARG
1	H	399	ASP
2	L	91	ILE
1	K	384	ASN

Sometimes sidechains can be flipped to improve hydrogen bonding and reduce clashes. All (1) such sidechains are listed below:

Mol	Chain	Res	Type
2	L	93	ASN

5.3.3 RNA [i](#)

There are no RNA molecules in this entry.

5.4 Non-standard residues in protein, DNA, RNA chains [i](#)

There are no non-standard protein/DNA/RNA residues in this entry.

5.5 Carbohydrates [i](#)

14 monosaccharides are modelled in this entry.

In the following table, the Counts columns list the number of bonds (or angles) for which Mogul statistics could be retrieved, the number of bonds (or angles) that are observed in the model and the number of bonds (or angles) that are defined in the Chemical Component Dictionary. The Link column lists molecule types, if any, to which the group is linked. The Z score for a bond length (or angle) is the number of standard deviations the observed value is removed from the expected value. A bond length (or angle) with $|Z| > 2$ is considered an outlier worth inspection. RMSZ is the root-mean-square of all Z scores of the bond lengths (or angles).

Mol	Type	Chain	Res	Link	Bond lengths			Bond angles		
					Counts	RMSZ	# Z > 2	Counts	RMSZ	# Z > 2
3	NAG	A	1	1,3	14,14,15	0.31	0	17,19,21	0.62	0
3	NAG	A	2	3	14,14,15	0.32	0	17,19,21	0.73	1 (5%)
3	BMA	A	3	3	11,11,12	0.31	0	15,15,17	0.60	0
3	MAN	A	4	3	11,11,12	0.31	0	15,15,17	0.83	1 (6%)
3	NAG	A	5	3	14,14,15	0.30	0	17,19,21	0.44	0
3	MAN	A	6	3	11,11,12	0.25	0	15,15,17	0.67	0
3	FUC	A	7	3	10,10,11	0.53	0	14,14,16	0.68	0
3	NAG	B	1	1,3	14,14,15	0.24	0	17,19,21	0.67	1 (5%)
3	NAG	B	2	3	14,14,15	0.29	0	17,19,21	0.58	0
3	BMA	B	3	3	11,11,12	0.29	0	15,15,17	0.60	0
3	MAN	B	4	3	11,11,12	0.32	0	15,15,17	0.92	1 (6%)
3	NAG	B	5	3	14,14,15	0.28	0	17,19,21	0.43	0
3	MAN	B	6	3	11,11,12	0.39	0	15,15,17	0.79	1 (6%)
3	FUC	B	7	3	10,10,11	0.41	0	14,14,16	0.77	1 (7%)

In the following table, the Chirals column lists the number of chiral outliers, the number of chiral centers analysed, the number of these observed in the model and the number defined in the Chemical Component Dictionary. Similar counts are reported in the Torsion and Rings columns. '-' means no outliers of that kind were identified.

Mol	Type	Chain	Res	Link	Chirals	Torsions	Rings
3	NAG	A	1	1,3	-	0/6/23/26	0/1/1/1
3	NAG	A	2	3	-	0/6/23/26	0/1/1/1
3	BMA	A	3	3	-	0/2/19/22	0/1/1/1
3	MAN	A	4	3	-	0/2/19/22	0/1/1/1

Continued on next page...

Continued from previous page...

Mol	Type	Chain	Res	Link	Chirals	Torsions	Rings
3	NAG	A	5	3	-	0/6/23/26	0/1/1/1
3	MAN	A	6	3	-	0/2/19/22	0/1/1/1
3	FUC	A	7	3	-	-	0/1/1/1
3	NAG	B	1	1,3	-	0/6/23/26	0/1/1/1
3	NAG	B	2	3	-	0/6/23/26	0/1/1/1
3	BMA	B	3	3	-	0/2/19/22	0/1/1/1
3	MAN	B	4	3	-	0/2/19/22	0/1/1/1
3	NAG	B	5	3	-	0/6/23/26	0/1/1/1
3	MAN	B	6	3	-	0/2/19/22	0/1/1/1
3	FUC	B	7	3	-	-	0/1/1/1

There are no bond length outliers.

The worst 5 of 6 bond angle outliers are listed below:

Mol	Chain	Res	Type	Atoms	Z	Observed(°)	Ideal(°)
3	B	4	MAN	C1-O5-C5	3.09	116.38	112.19
3	A	4	MAN	C1-O5-C5	2.99	116.24	112.19
3	B	7	FUC	C1-O5-C5	2.30	118.00	112.78
3	B	6	MAN	C1-O5-C5	2.20	115.17	112.19
3	B	1	NAG	C1-O5-C5	2.11	115.06	112.19

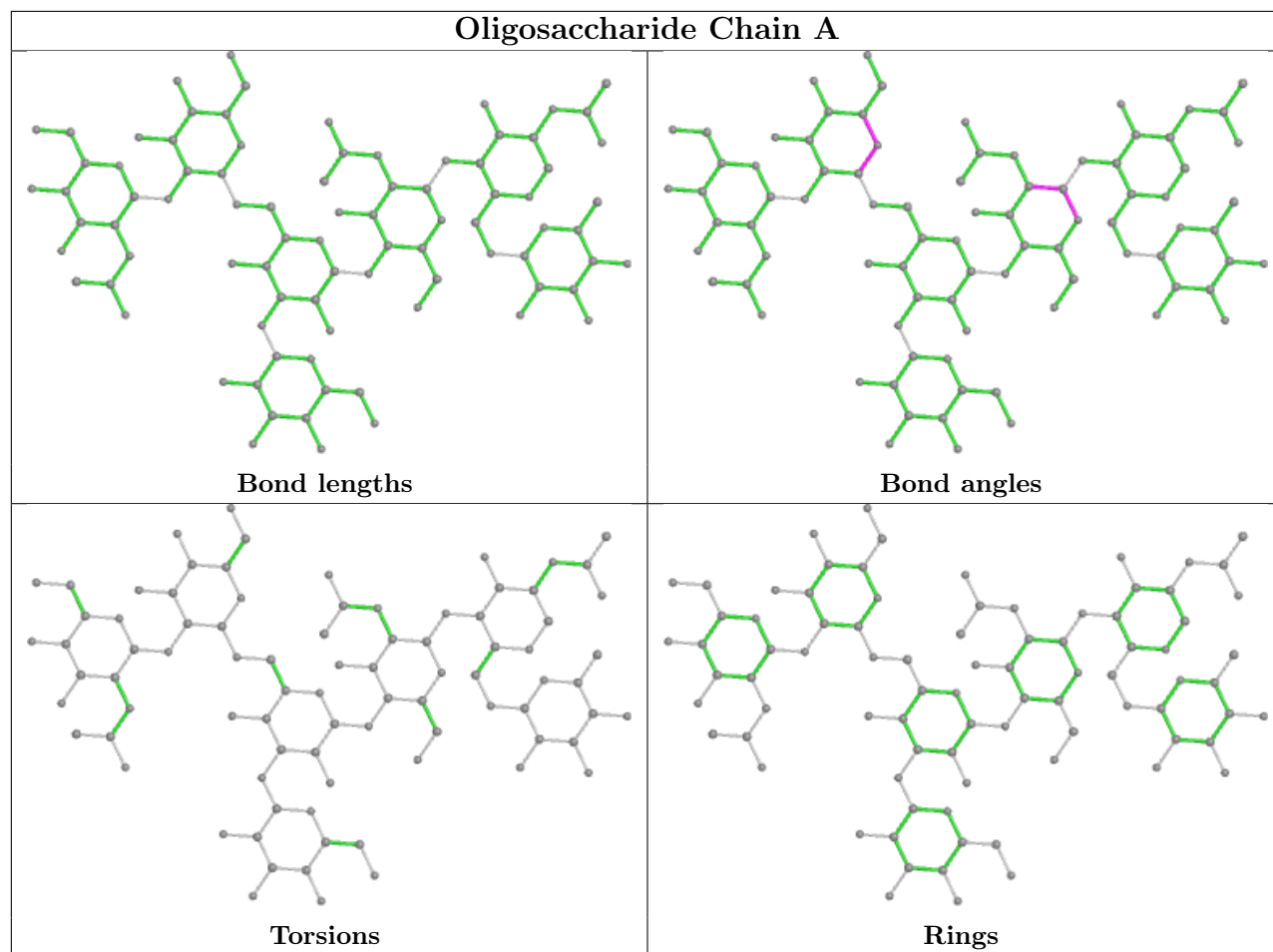
There are no chirality outliers.

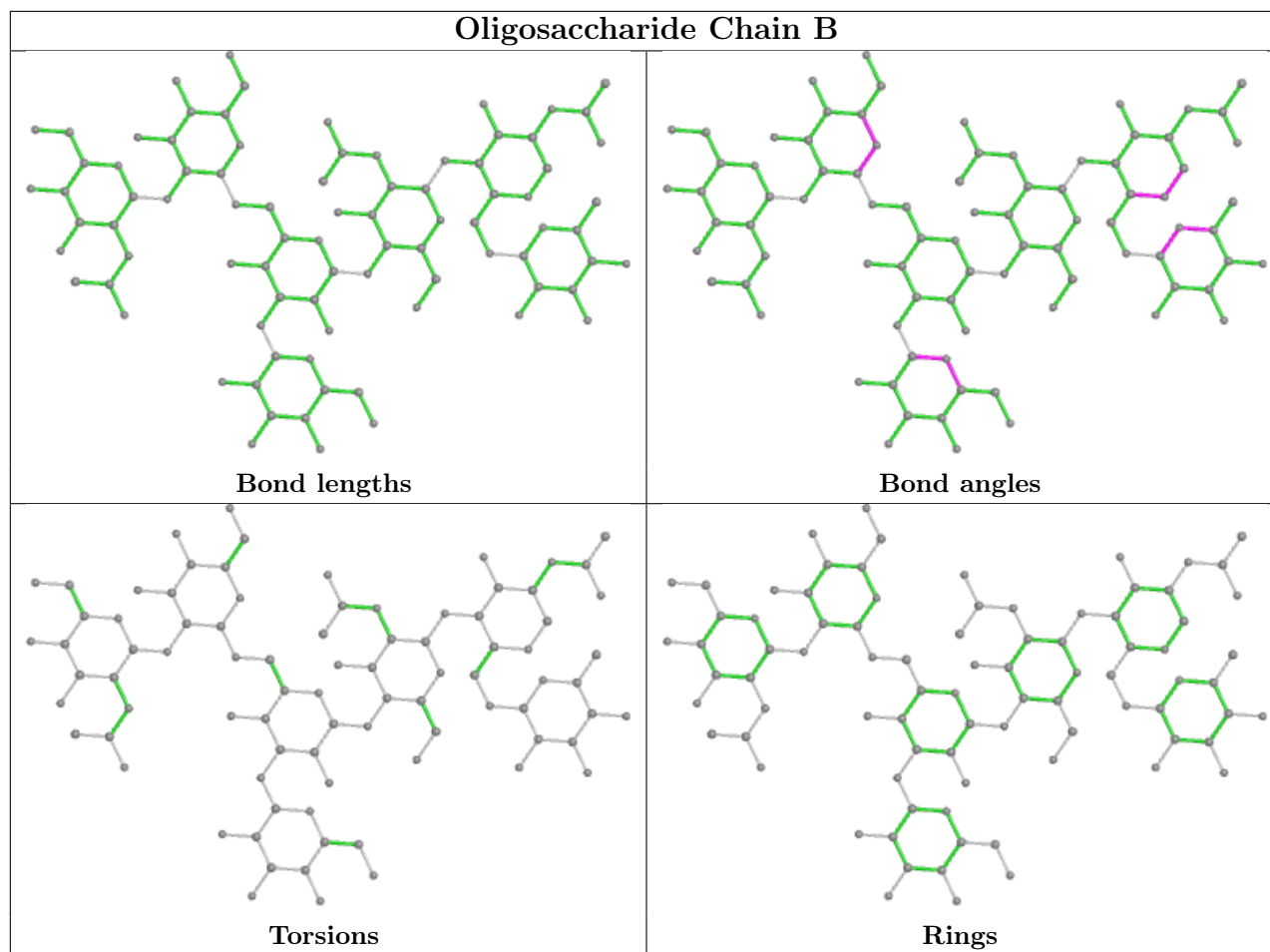
There are no torsion outliers.

There are no ring outliers.

No monomer is involved in short contacts.

The following is a two-dimensional graphical depiction of Mogul quality analysis of bond lengths, bond angles, torsion angles, and ring geometry for oligosaccharide.





5.6 Ligand geometry [i](#)

Of 5 ligands modelled in this entry, 2 are monoatomic - leaving 3 for Mogul analysis.

In the following table, the Counts columns list the number of bonds (or angles) for which Mogul statistics could be retrieved, the number of bonds (or angles) that are observed in the model and the number of bonds (or angles) that are defined in the Chemical Component Dictionary. The Link column lists molecule types, if any, to which the group is linked. The Z score for a bond length (or angle) is the number of standard deviations the observed value is removed from the expected value. A bond length (or angle) with $|Z| > 2$ is considered an outlier worth inspection. RMSZ is the root-mean-square of all Z scores of the bond lengths (or angles).

Mol	Type	Chain	Res	Link	Bond lengths			Bond angles		
					Counts	RMSZ	$\# Z > 2$	Counts	RMSZ	$\# Z > 2$
5	ACT	K	509	-	3,3,3	1.10	0	3,3,3	0.62	0
5	ACT	L	301	-	3,3,3	0.82	0	3,3,3	1.33	0
5	ACT	L	302	-	3,3,3	1.03	0	3,3,3	0.81	0

There are no bond length outliers.

There are no bond angle outliers.

There are no chirality outliers.

There are no torsion outliers.

There are no ring outliers.

No monomer is involved in short contacts.

5.7 Other polymers

There are no such residues in this entry.

5.8 Polymer linkage issues

There are no chain breaks in this entry.

6 Fit of model and data [i](#)

6.1 Protein, DNA and RNA chains [i](#)

In the following table, the column labelled ‘#RSRZ> 2’ contains the number (and percentage) of RSRZ outliers, followed by percent RSRZ outliers for the chain as percentile scores relative to all X-ray entries and entries of similar resolution. The OWAB column contains the minimum, median, 95th percentile and maximum values of the occupancy-weighted average B-factor per residue. The column labelled ‘Q< 0.9’ lists the number of (and percentage) of residues with an average occupancy less than 0.9.

Mol	Chain	Analysed	<RSRZ>	#RSRZ>2	OWAB(Å ²)	Q<0.9
1	H	429/450 (95%)	0.31	47 (10%) 5 4	16, 34, 87, 103	0
1	K	426/450 (94%)	-0.32	18 (4%) 36 30	17, 27, 54, 102	2 (0%)
2	L	215/215 (100%)	-0.39	2 (0%) 84 82	17, 27, 51, 71	0
2	M	215/215 (100%)	-0.04	13 (6%) 21 17	18, 32, 70, 79	0
All	All	1285/1330 (96%)	-0.07	80 (6%) 20 16	16, 29, 68, 103	2 (0%)

The worst 5 of 80 RSRZ outliers are listed below:

Mol	Chain	Res	Type	RSRZ
1	H	328	LEU	9.6
1	H	330	SER	7.8
1	H	329	PRO	6.6
1	H	327	GLY	6.4
1	H	277	TRP	6.1

6.2 Non-standard residues in protein, DNA, RNA chains [i](#)

There are no non-standard protein/DNA/RNA residues in this entry.

6.3 Carbohydrates [i](#)

In the following table, the Atoms column lists the number of modelled atoms in the group and the number defined in the chemical component dictionary. The B-factors column lists the minimum, median, 95th percentile and maximum values of B factors of atoms in the group. The column labelled ‘Q< 0.9’ lists the number of atoms with occupancy less than 0.9.

Mol	Type	Chain	Res	Atoms	RSCC	RSR	B-factors(Å ²)	Q<0.9
3	MAN	A	6	11/12	0.80	0.14	40,45,49,51	0
3	FUC	B	7	10/11	0.80	0.24	62,68,69,70	0

Continued on next page...

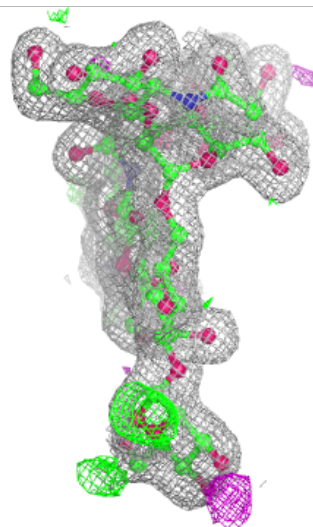
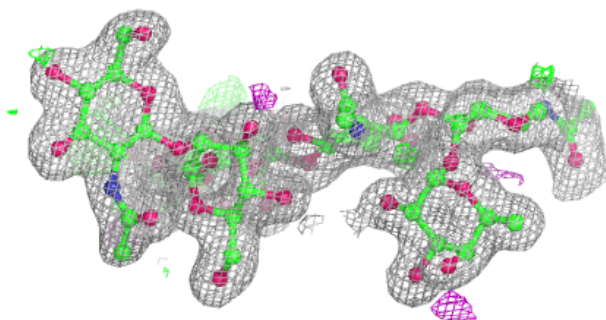
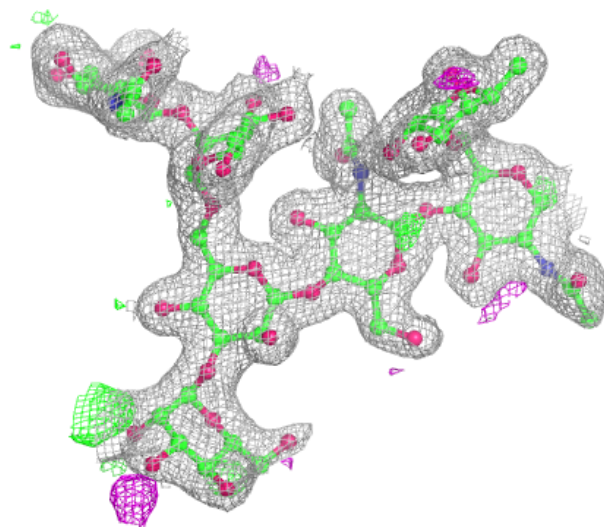
Continued from previous page...

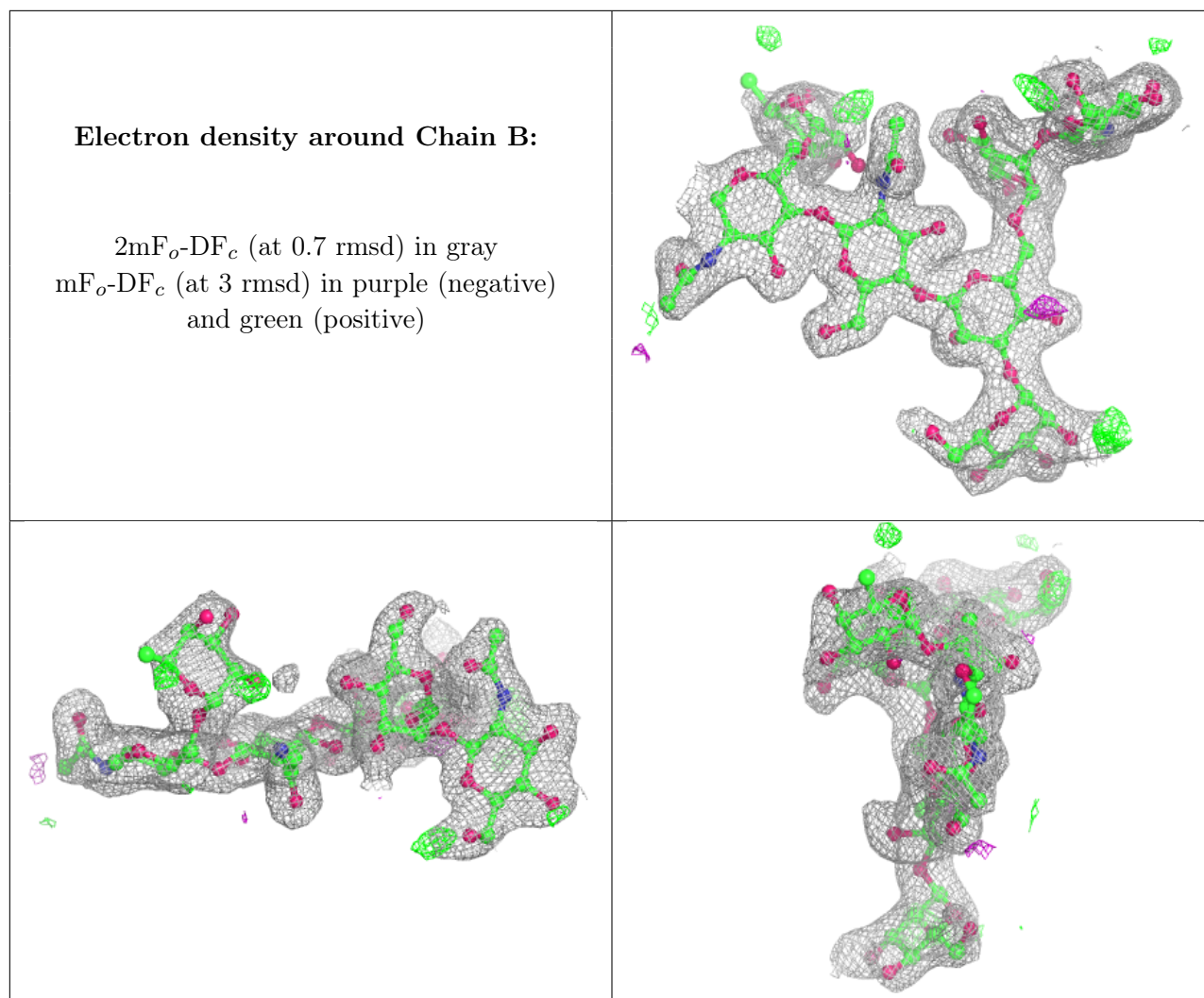
Mol	Type	Chain	Res	Atoms	RSCC	RSR	B-factors(\AA^2)	Q<0.9
3	MAN	B	6	11/12	0.90	0.10	40,43,50,53	0
3	NAG	B	5	14/15	0.92	0.07	39,42,44,44	0
3	NAG	A	5	14/15	0.92	0.10	35,38,40,42	0
3	MAN	B	4	11/12	0.92	0.08	38,40,45,46	0
3	NAG	B	1	14/15	0.93	0.08	31,37,46,55	0
3	BMA	B	3	11/12	0.93	0.07	28,33,37,40	0
3	NAG	A	2	14/15	0.95	0.07	25,31,38,42	0
3	FUC	A	7	10/11	0.95	0.06	23,24,25,27	0
3	MAN	A	4	11/12	0.95	0.06	29,30,32,33	0
3	NAG	A	1	14/15	0.95	0.07	26,32,40,40	0
3	NAG	B	2	14/15	0.96	0.06	27,31,34,36	0
3	BMA	A	3	11/12	0.96	0.06	25,28,31,34	0

The following is a graphical depiction of the model fit to experimental electron density for oligosaccharide. Each fit is shown from different orientation to approximate a three-dimensional view.

Electron density around Chain A:

$2mF_o-DF_c$ (at 0.7 rmsd) in gray
 mF_o-DF_c (at 3 rmsd) in purple (negative)
and green (positive)





6.4 Ligands [i](#)

In the following table, the Atoms column lists the number of modelled atoms in the group and the number defined in the chemical component dictionary. The B-factors column lists the minimum, median, 95th percentile and maximum values of B factors of atoms in the group. The column labelled 'Q< 0.9' lists the number of atoms with occupancy less than 0.9.

Mol	Type	Chain	Res	Atoms	RSCC	RSR	B-factors(Å ²)	Q<0.9
5	ACT	K	509	4/4	0.76	0.19	39,40,43,48	0
5	ACT	L	301	4/4	0.89	0.13	44,49,50,51	0
5	ACT	L	302	4/4	0.90	0.16	40,46,47,47	0
4	CA	H	508	1/1	0.92	0.10	75,75,75,75	0
4	CA	K	508	1/1	0.99	0.04	34,34,34,34	0

6.5 Other polymers [i](#)

There are no such residues in this entry.