



## wwPDB EM Validation Summary Report ⓘ

Nov 20, 2022 – 02:04 am GMT

PDB ID : 6GFW  
EMDB ID : EMD-4397  
Title : Cryo-EM structure of bacterial RNA polymerase-sigma54 holoenzyme initial transcribing complex  
Authors : Glyde, R.; Ye, F.Z.; Zhang, X.D.  
Deposited on : 2018-05-02  
Resolution : 3.70 Å(reported)

This is a wwPDB EM Validation Summary Report for a publicly released PDB entry.

We welcome your comments at [validation@mail.wwpdb.org](mailto:validation@mail.wwpdb.org)

A user guide is available at

<https://www.wwpdb.org/validation/2017/EMValidationReportHelp>

with specific help available everywhere you see the ⓘ symbol.

The types of validation reports are described at

<http://www.wwpdb.org/validation/2017/FAQs#types>.

---

The following versions of software and data (see [references ⓘ](#)) were used in the production of this report:

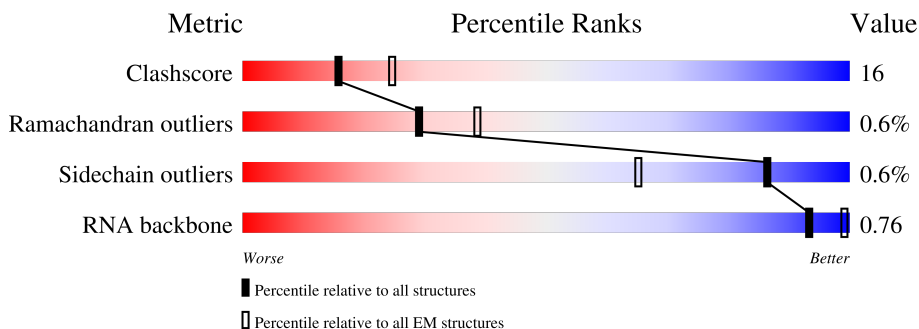
EMDB validation analysis : 0.0.1.dev43  
MolProbity : 4.02b-467  
Percentile statistics : 20191225.v01 (using entries in the PDB archive December 25th 2019)  
MapQ : 1.9.9  
Ideal geometry (proteins) : Engh & Huber (2001)  
Ideal geometry (DNA, RNA) : Parkinson et al. (1996)  
Validation Pipeline (wwPDB-VP) : 2.31.2

# 1 Overall quality at a glance i

The following experimental techniques were used to determine the structure:  
*ELECTRON MICROSCOPY*

The reported resolution of this entry is 3.70 Å.

Percentile scores (ranging between 0-100) for global validation metrics of the entry are shown in the following graphic. The table shows the number of entries on which the scores are based.



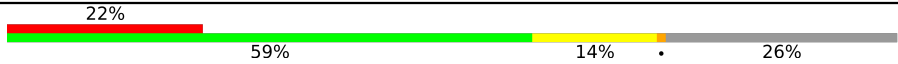
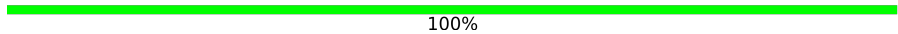
Metric	Whole archive (#Entries)	EM structures (#Entries)
Clashscore	158937	4297
Ramachandran outliers	154571	4023
Sidechain outliers	154315	3826
RNA backbone	4643	859

The table below summarises the geometric issues observed across the polymeric chains and their fit to the map. The red, orange, yellow and green segments of the bar indicate the fraction of residues that contain outliers for  $\geq 3$ , 2, 1 and 0 types of geometric quality criteria respectively. A grey segment represents the fraction of residues that are not modelled. The numeric value for each fraction is indicated below the corresponding segment, with a dot representing fractions  $\leq 5\%$ . The upper red bar (where present) indicates the fraction of residues that have poor fit to the EM map (all-atom inclusion  $< 40\%$ ). The numeric value is given above the bar.

Mol	Chain	Length	Quality of chain
1	A	329	
1	B	329	
2	C	1342	
3	D	1407	
4	E	91	
5	F	63	
6	G	63	

Continued on next page...

*Continued from previous page...*

Mol	Chain	Length	Quality of chain
7	M	497	 <p>22% 59% 14% 26%</p>
8	R	4	 <p>100%</p>

## 2 Entry composition [i](#)

There are 8 unique types of molecules in this entry. The entry contains 28005 atoms, of which 0 are hydrogens and 0 are deuteriums.

In the tables below, the AltConf column contains the number of residues with at least one atom in alternate conformation and the Trace column contains the number of residues modelled with at most 2 atoms.

- Molecule 1 is a protein called DNA-directed RNA polymerase subunit alpha.

Mol	Chain	Residues	Atoms					AltConf	Trace
			Total	C	N	O	S		
1	A	233	Total	C	N	O	S	0	0
			1763	1096	313	348	6		
1	B	235	Total	C	N	O	S	0	0
			1735	1085	305	340	5		

- Molecule 2 is a protein called DNA-directed RNA polymerase subunit beta.

Mol	Chain	Residues	Atoms					AltConf	Trace
			Total	C	N	O	S		
2	C	1341	Total	C	N	O	S	0	0
			9998	6268	1739	1952	39		

- Molecule 3 is a protein called DNA-directed RNA polymerase subunit beta'.

Mol	Chain	Residues	Atoms					AltConf	Trace
			Total	C	N	O	S		
3	D	1345	Total	C	N	O	S	0	0
			9722	6102	1747	1832	41		

- Molecule 4 is a protein called DNA-directed RNA polymerase subunit omega.

Mol	Chain	Residues	Atoms					AltConf	Trace
			Total	C	N	O	S		
4	E	74	Total	C	N	O	S	0	0
			546	337	105	103	1		

- Molecule 5 is a DNA chain called nifH promoter template DNA.

Mol	Chain	Residues	Atoms					AltConf	Trace
			Total	C	N	O	P		
5	F	50	Total	C	N	O	P	0	0
			1027	484	197	296	50		

- Molecule 6 is a DNA chain called NifH promoter non-template DNA.

Mol	Chain	Residues	Atoms					AltConf	Trace
			Total	C	N	O	P		
6	G	50	1026	486	189	301	50	0	0

- Molecule 7 is a protein called RNA polymerase sigma-54 factor.

Mol	Chain	Residues	Atoms					AltConf	Trace
			Total	C	N	O	S		
7	M	366	2102	1295	385	421	1	0	0

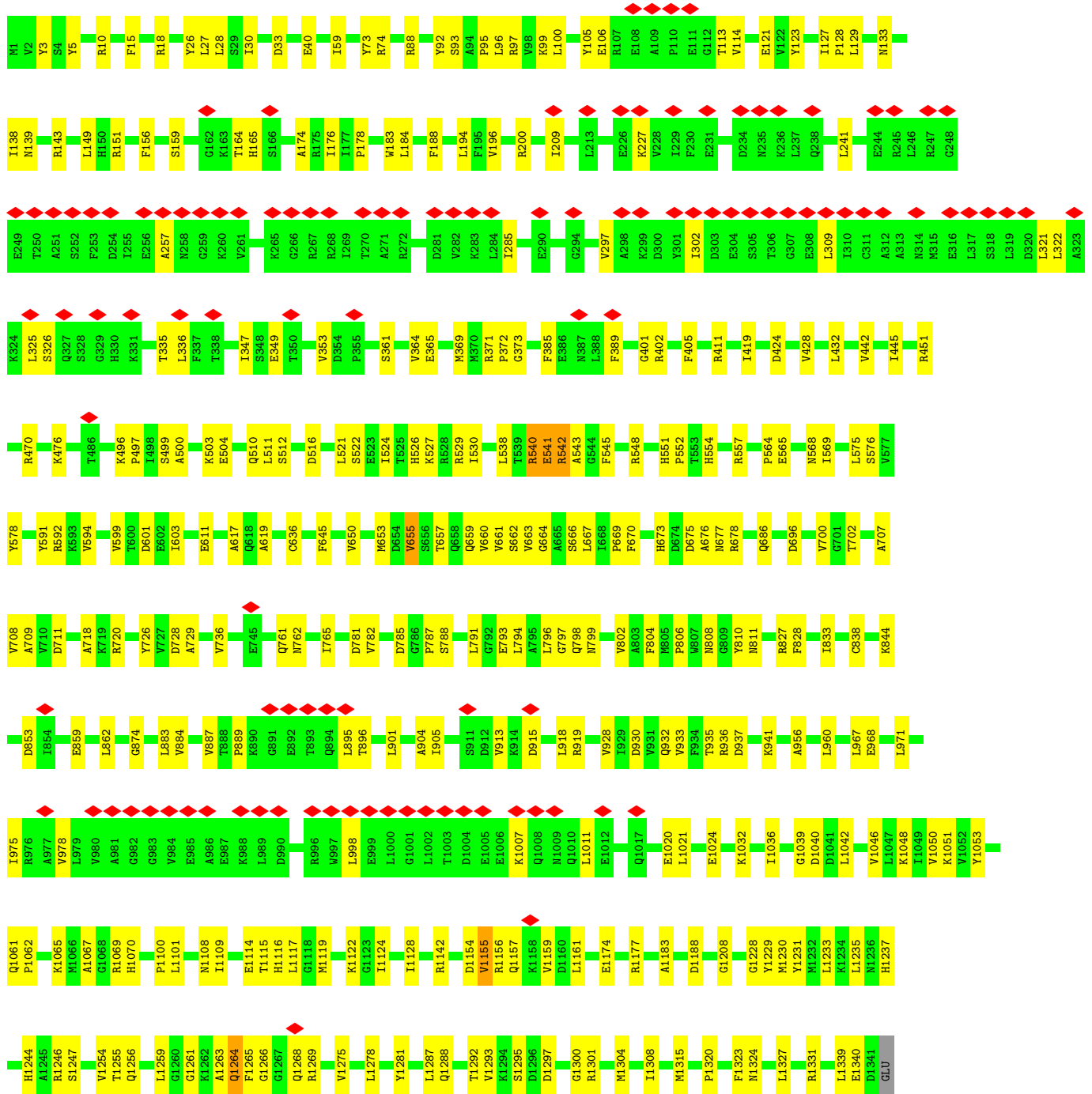
There are 21 discrepancies between the modelled and reference sequences:

Chain	Residue	Modelled	Actual	Comment	Reference
M	-19	MET	-	initiating methionine	UNP A0A0J4U551
M	-18	GLY	-	expression tag	UNP A0A0J4U551
M	-17	SER	-	expression tag	UNP A0A0J4U551
M	-16	SER	-	expression tag	UNP A0A0J4U551
M	-15	HIS	-	expression tag	UNP A0A0J4U551
M	-14	HIS	-	expression tag	UNP A0A0J4U551
M	-13	HIS	-	expression tag	UNP A0A0J4U551
M	-12	HIS	-	expression tag	UNP A0A0J4U551
M	-11	HIS	-	expression tag	UNP A0A0J4U551
M	-10	HIS	-	expression tag	UNP A0A0J4U551
M	-9	SER	-	expression tag	UNP A0A0J4U551
M	-8	SER	-	expression tag	UNP A0A0J4U551
M	-7	GLY	-	expression tag	UNP A0A0J4U551
M	-6	LEU	-	expression tag	UNP A0A0J4U551
M	-5	VAL	-	expression tag	UNP A0A0J4U551
M	-4	PRO	-	expression tag	UNP A0A0J4U551
M	-3	ARG	-	expression tag	UNP A0A0J4U551
M	-2	GLY	-	expression tag	UNP A0A0J4U551
M	-1	SER	-	expression tag	UNP A0A0J4U551
M	0	HIS	-	expression tag	UNP A0A0J4U551
M	336	ALA	ARG	engineered mutation	UNP A0A0J4U551

- Molecule 8 is a RNA chain called de novo synthesized RNA.

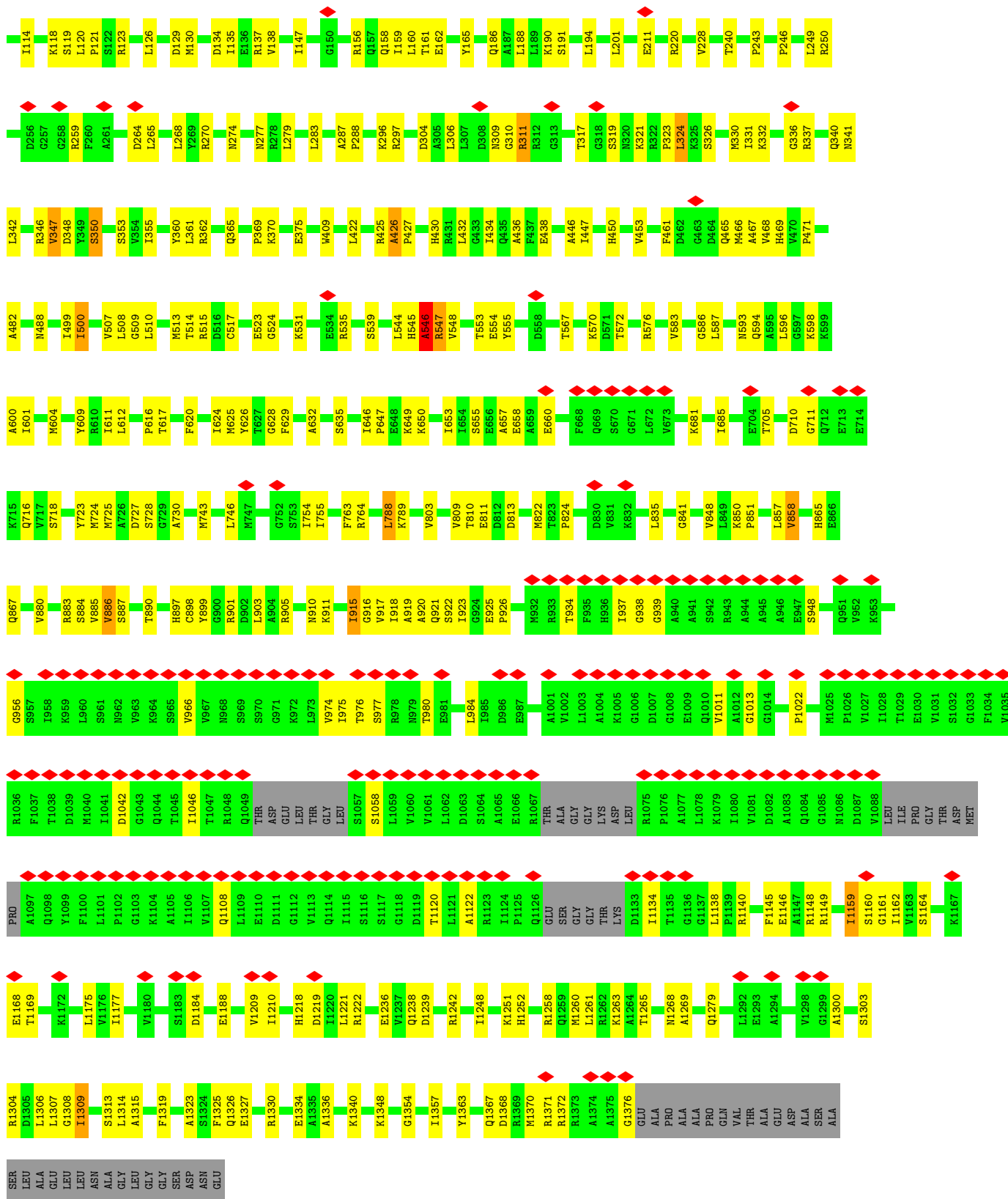
Mol	Chain	Residues	Atoms					AltConf	Trace
			Total	C	N	O	P		
8	R	4	86	39	17	27	3	0	0





• Molecule 3: DNA-directed RNA polymerase subunit beta'

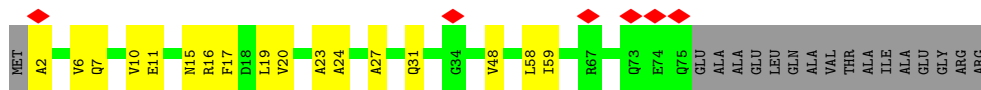




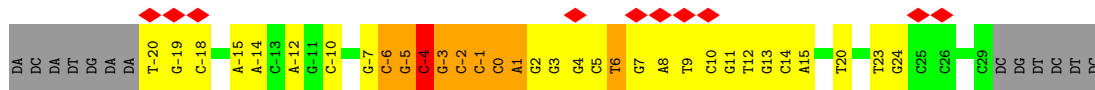
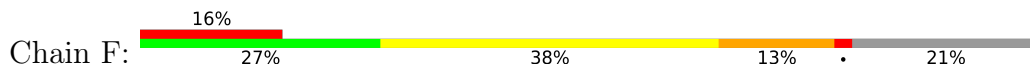
● Molecule 4: DNA-directed RNA polymerase subunit omega



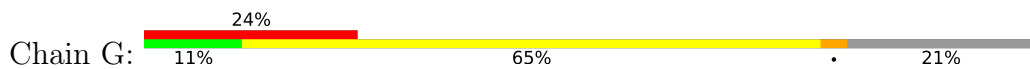




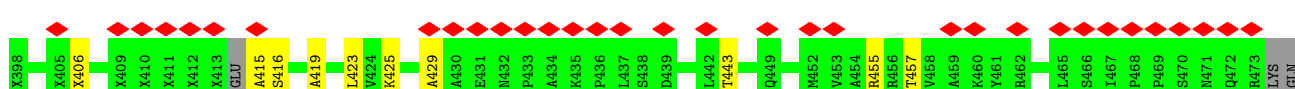
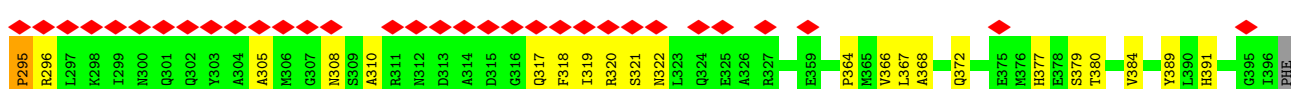
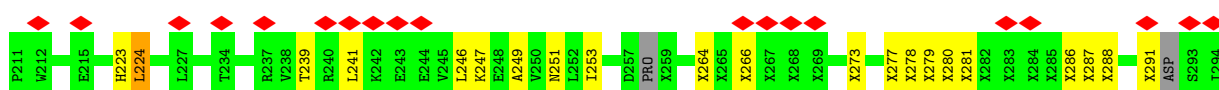
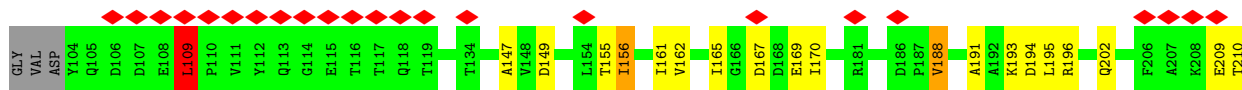
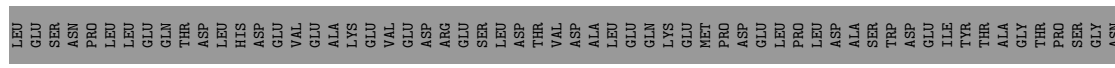
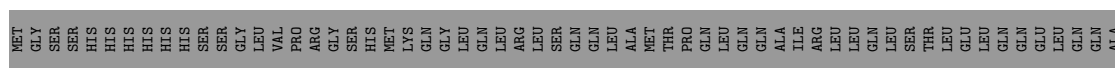
• Molecule 5: nifH promoter template DNA



• Molecule 6: NifH promoter non-template DNA



• Molecule 7: RNA polymerase sigma-54 factor



• Molecule 8: de novo synthesized RNA



There are no outlier residues recorded for this chain.

## 4 Experimental information

Property	Value	Source
EM reconstruction method	SINGLE PARTICLE	Depositor
Imposed symmetry	POINT, C1	Depositor
Number of particles used	89996	Depositor
Resolution determination method	FSC 0.143 CUT-OFF	Depositor
CTF correction method	PHASE FLIPPING AND AMPLITUDE CORRECTION	Depositor
Microscope	FEI TITAN KRIOS	Depositor
Voltage (kV)	300	Depositor
Electron dose ( $e^-/\text{\AA}^2$ )	48	Depositor
Minimum defocus (nm)	Not provided	
Maximum defocus (nm)	Not provided	
Magnification	Not provided	
Image detector	GATAN K2 SUMMIT (4k x 4k)	Depositor
Maximum map value	0.287	Depositor
Minimum map value	-0.156	Depositor
Average map value	0.001	Depositor
Map value standard deviation	0.008	Depositor
Recommended contour level	0.035	Depositor
Map size (Å)	276.48, 276.48, 276.48	wwPDB
Map dimensions	256, 256, 256	wwPDB
Map angles (°)	90.0, 90.0, 90.0	wwPDB
Pixel spacing (Å)	1.08, 1.08, 1.08	Depositor

## 5 Model quality i

### 5.1 Standard geometry i

The Z score for a bond length (or angle) is the number of standard deviations the observed value is removed from the expected value. A bond length (or angle) with  $|Z| > 5$  is considered an outlier worth inspection. RMSZ is the root-mean-square of all Z scores of the bond lengths (or angles).

Mol	Chain	Bond lengths		Bond angles	
		RMSZ	# Z  >5	RMSZ	# Z  >5
1	A	0.26	0/1784	0.50	0/2424
1	B	0.25	0/1754	0.48	0/2388
2	C	0.24	0/10148	0.46	0/13768
3	D	0.30	3/9856 (0.0%)	0.50	4/13399 (0.0%)
4	E	0.23	0/548	0.45	0/743
5	F	0.95	5/1153 (0.4%)	1.35	15/1777 (0.8%)
6	G	0.70	2/1150 (0.2%)	0.92	3/1773 (0.2%)
7	M	0.30	0/1869	0.57	3/2593 (0.1%)
8	R	0.12	0/96	0.57	0/149
All	All	0.35	10/28358 (0.0%)	0.58	25/39014 (0.1%)

Chiral center outliers are detected by calculating the chiral volume of a chiral center and verifying if the center is modelled as a planar moiety or with the opposite hand. A planarity outlier is detected by checking planarity of atoms in a peptide group, atoms in a mainchain group or atoms of a sidechain that are expected to be planar.

Mol	Chain	#Chirality outliers	#Planarity outliers
2	C	0	1
3	D	0	3
5	F	0	2
All	All	0	6

The worst 5 of 10 bond length outliers are listed below:

Mol	Chain	Res	Type	Atoms	Z	Observed(Å)	Ideal(Å)
3	D	426	ALA	C-N	13.35	1.59	1.34
5	F	-5	DG	O3'-P	-11.48	1.47	1.61
6	G	16	DG	O3'-P	-11.36	1.47	1.61
5	F	6	DT	O3'-P	-8.72	1.50	1.61
3	D	858	VAL	C-N	6.85	1.47	1.34

The worst 5 of 25 bond angle outliers are listed below:

Mol	Chain	Res	Type	Atoms	Z	Observed(°)	Ideal(°)
5	F	-1	DC	O5'-P-OP2	-12.22	94.71	105.70
6	G	17	DC	O5'-P-OP1	12.01	125.11	110.70
5	F	-5	DG	C5'-C4'-C3'	-11.39	93.59	114.10
5	F	1	DA	O5'-P-OP2	11.08	123.99	110.70
5	F	-5	DG	C4'-C3'-O3'	9.38	133.15	109.70

There are no chirality outliers.

5 of 6 planarity outliers are listed below:

Mol	Chain	Res	Type	Group
2	C	1263	ALA	Peptide
3	D	1138	LEU	Peptide
3	D	118	LYS	Peptide
3	D	350	SER	Peptide
5	F	-4	DC	Sidechain

## 5.2 Too-close contacts [i](#)

In the following table, the Non-H and H(model) columns list the number of non-hydrogen atoms and hydrogen atoms in the chain respectively. The H(added) column lists the number of hydrogen atoms added and optimized by MolProbity. The Clashes column lists the number of clashes within the asymmetric unit, whereas Symm-Clashes lists symmetry-related clashes.

Mol	Chain	Non-H	H(model)	H(added)	Clashes	Symm-Clashes
1	A	1763	0	1756	44	0
1	B	1735	0	1724	41	0
2	C	9998	0	9628	255	0
3	D	9722	0	9413	247	0
4	E	546	0	537	14	0
5	F	1027	0	558	96	0
6	G	1026	0	562	175	0
7	M	2102	0	1401	103	0
8	R	86	0	45	0	0
All	All	28005	0	25624	858	0

The all-atom clashscore is defined as the number of clashes found per 1000 atoms (including hydrogen atoms). The all-atom clashscore for this structure is 16.

The worst 5 of 858 close contacts within the same asymmetric unit are listed below, sorted by their clash magnitude.

Atom-1	Atom-2	Interatomic distance (Å)	Clash overlap (Å)
5:F:8:DA:H2''	5:F:9:DT:C5'	1.43	1.47
6:G:-17:DT:C2'	6:G:-16:DT:H72	1.45	1.47
5:F:8:DA:C2'	5:F:9:DT:H5''	1.46	1.45
2:C:372:PRO:HB2	7:M:317:GLN:CB	1.60	1.31
6:G:-17:DT:O5'	7:M:367:LEU:HD11	1.30	1.26

There are no symmetry-related clashes.

## 5.3 Torsion angles [i](#)

### 5.3.1 Protein backbone [i](#)

In the following table, the Percentiles column shows the percent Ramachandran outliers of the chain as a percentile score with respect to all PDB entries followed by that with respect to all EM entries.

The Analysed column shows the number of residues for which the backbone conformation was analysed, and the total number of residues.

Mol	Chain	Analysed	Favoured	Allowed	Outliers	Percentiles	
1	A	231/329 (70%)	210 (91%)	21 (9%)	0	100	100
1	B	233/329 (71%)	218 (94%)	15 (6%)	0	100	100
2	C	1339/1342 (100%)	1234 (92%)	101 (8%)	4 (0%)	41	74
3	D	1335/1407 (95%)	1184 (89%)	138 (10%)	13 (1%)	15	51
4	E	72/91 (79%)	67 (93%)	5 (7%)	0	100	100
7	M	311/497 (63%)	260 (84%)	47 (15%)	4 (1%)	12	47
All	All	3521/3995 (88%)	3173 (90%)	327 (9%)	21 (1%)	29	62

5 of 21 Ramachandran outliers are listed below:

Mol	Chain	Res	Type
2	C	347	ILE
2	C	1155	VAL
3	D	500	ILE
3	D	886	VAL
3	D	938	GLY

### 5.3.2 Protein sidechains [i](#)

In the following table, the Percentiles column shows the percent sidechain outliers of the chain as a percentile score with respect to all PDB entries followed by that with respect to all EM entries.

The Analysed column shows the number of residues for which the sidechain conformation was analysed, and the total number of residues.

Mol	Chain	Analysed	Rotameric	Outliers	Percentiles	
1	A	190/286 (66%)	185 (97%)	5 (3%)	46	69
1	B	183/286 (64%)	183 (100%)	0	100	100
2	C	1021/1157 (88%)	1016 (100%)	5 (0%)	88	94
3	D	938/1168 (80%)	933 (100%)	5 (0%)	88	94
4	E	53/75 (71%)	53 (100%)	0	100	100
7	M	100/396 (25%)	100 (100%)	0	100	100
All	All	2485/3368 (74%)	2470 (99%)	15 (1%)	86	93

5 of 15 residues with a non-rotameric sidechain are listed below:

Mol	Chain	Res	Type
2	C	541	GLU
3	D	547	ARG
2	C	542	ARG
3	D	934	THR
3	D	109	SER

Sometimes sidechains can be flipped to improve hydrogen bonding and reduce clashes. 5 of 14 such sidechains are listed below:

Mol	Chain	Res	Type
2	C	1072	ASN
2	C	1237	HIS
3	D	1279	GLN
3	D	702	GLN
3	D	1218	HIS

### 5.3.3 RNA [i](#)

Mol	Chain	Analysed	Backbone Outliers	Pucker Outliers
8	R	3/4 (75%)	0	0

There are no RNA backbone outliers to report.

There are no RNA pucker outliers to report.

#### 5.4 Non-standard residues in protein, DNA, RNA chains [i](#)

There are no non-standard protein/DNA/RNA residues in this entry.

#### 5.5 Carbohydrates [i](#)

There are no monosaccharides in this entry.

#### 5.6 Ligand geometry [i](#)

There are no ligands in this entry.

#### 5.7 Other polymers [i](#)

There are no such residues in this entry.

#### 5.8 Polymer linkage issues [i](#)

There are no chain breaks in this entry.



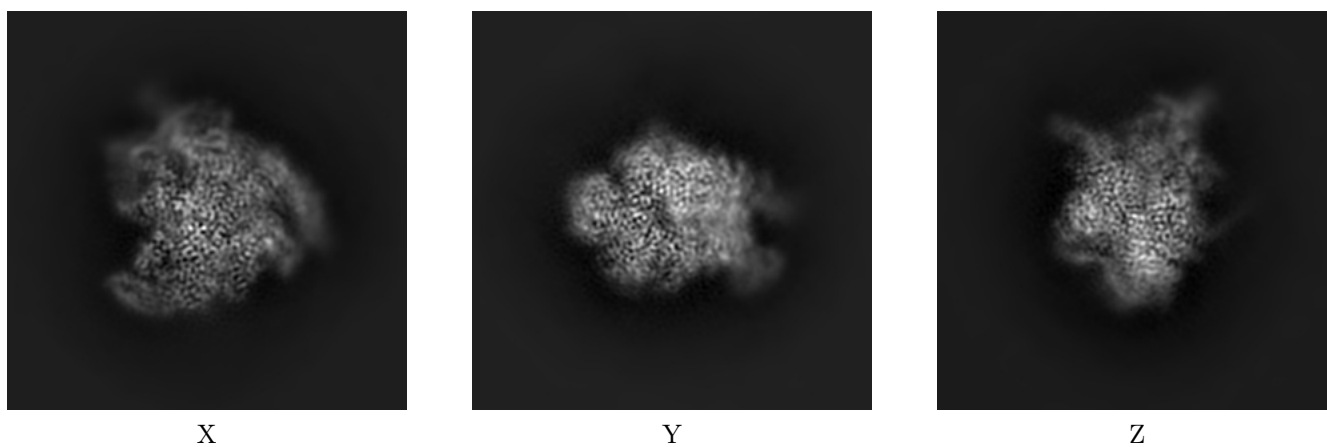
## 6 Map visualisation [i](#)

This section contains visualisations of the EMDB entry EMD-4397. These allow visual inspection of the internal detail of the map and identification of artifacts.

No raw map or half-maps were deposited for this entry and therefore no images, graphs, etc. pertaining to the raw map can be shown.

### 6.1 Orthogonal projections [i](#)

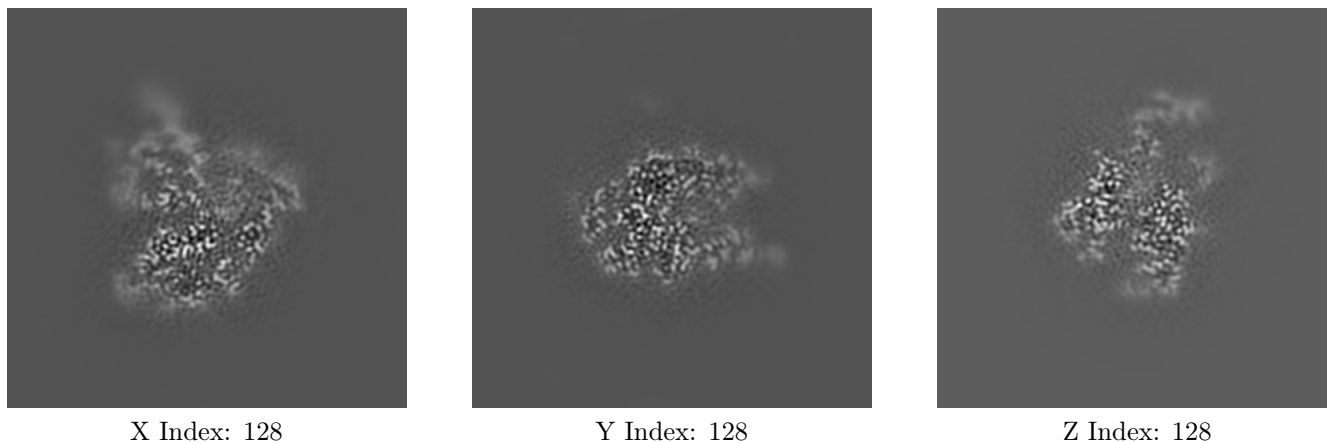
#### 6.1.1 Primary map



The images above show the map projected in three orthogonal directions.

### 6.2 Central slices [i](#)

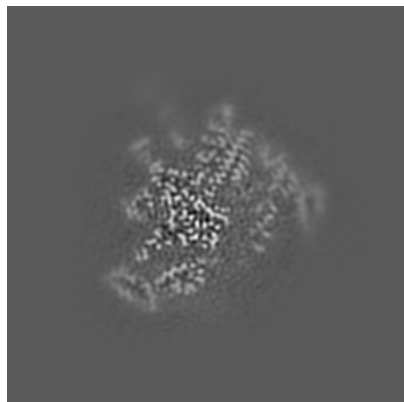
#### 6.2.1 Primary map



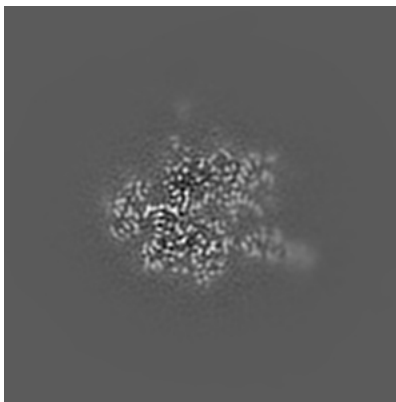
The images above show central slices of the map in three orthogonal directions.

## 6.3 Largest variance slices [i](#)

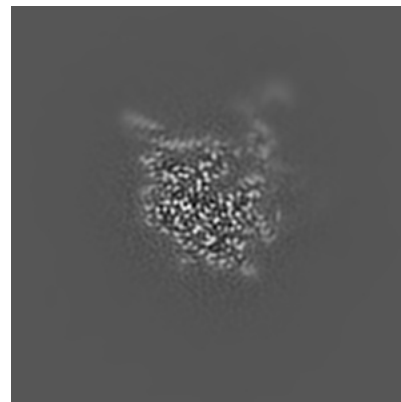
### 6.3.1 Primary map



X Index: 141



Y Index: 124

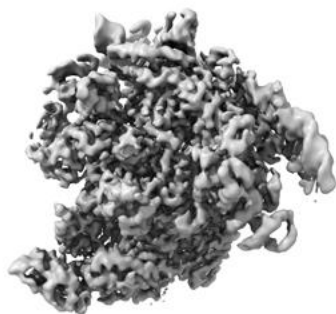


Z Index: 106

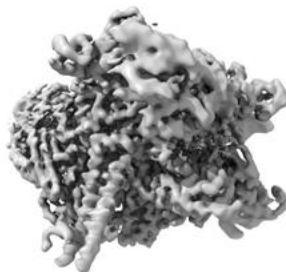
The images above show the largest variance slices of the map in three orthogonal directions.

## 6.4 Orthogonal surface views [i](#)

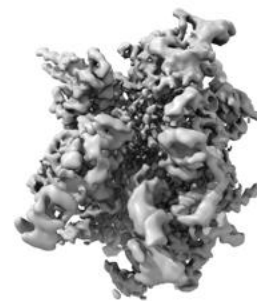
### 6.4.1 Primary map



X



Y



Z

The images above show the 3D surface view of the map at the recommended contour level 0.035. These images, in conjunction with the slice images, may facilitate assessment of whether an appropriate contour level has been provided.

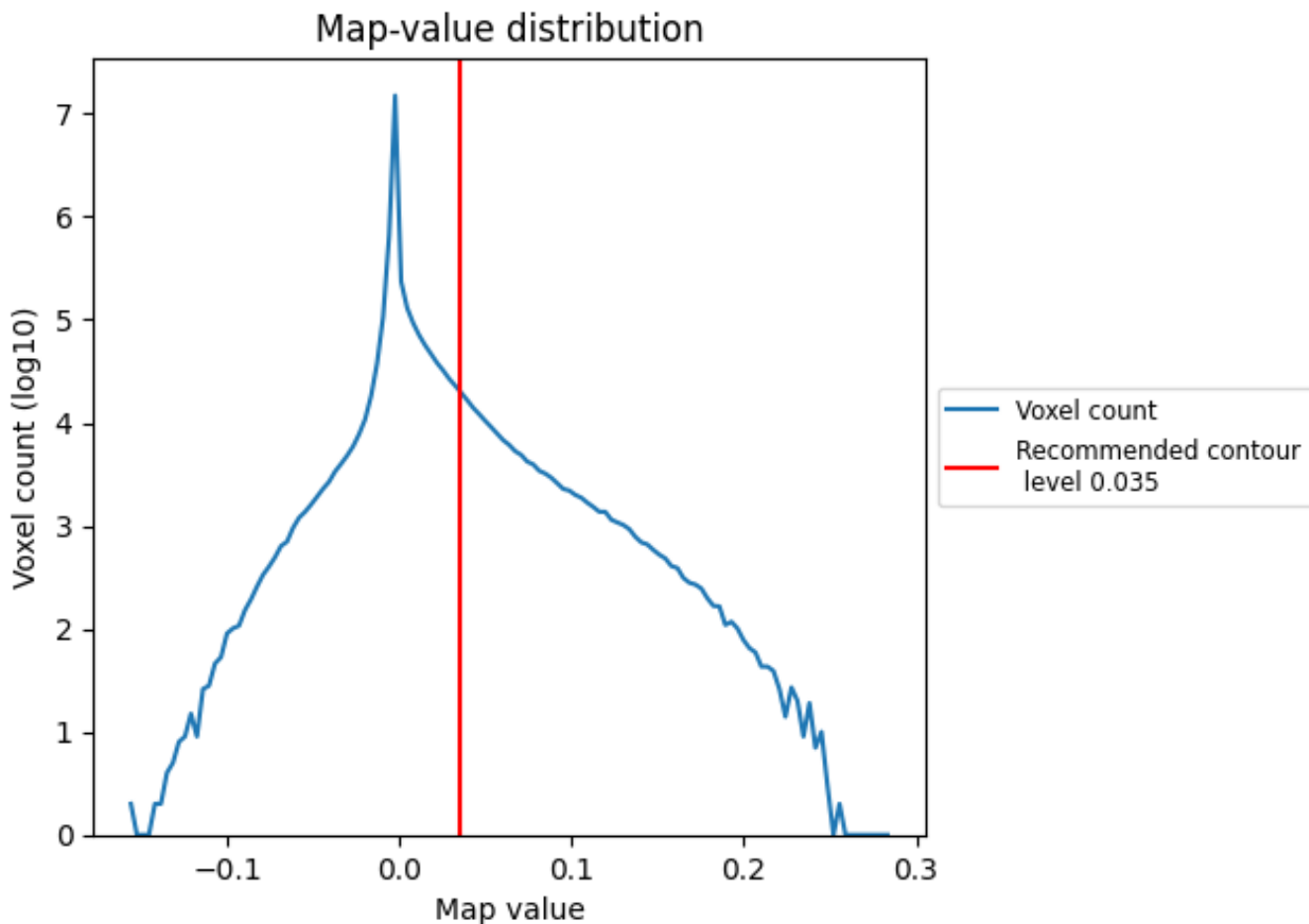
## 6.5 Mask visualisation

This section was not generated. No masks/segmentation were deposited.

## 7 Map analysis [i](#)

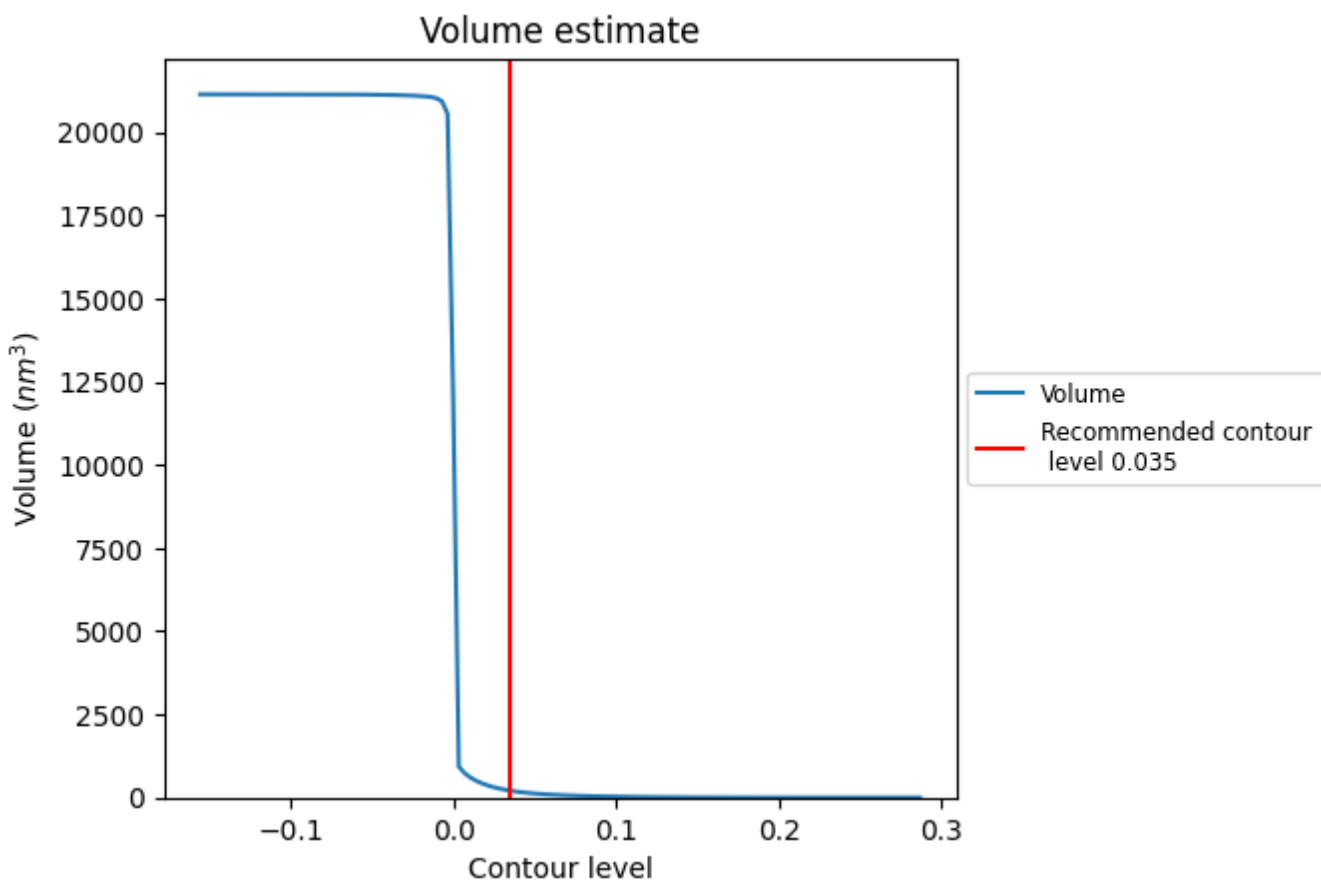
This section contains the results of statistical analysis of the map.

### 7.1 Map-value distribution [i](#)



The map-value distribution is plotted in 128 intervals along the x-axis. The y-axis is logarithmic. A spike in this graph at zero usually indicates that the volume has been masked.

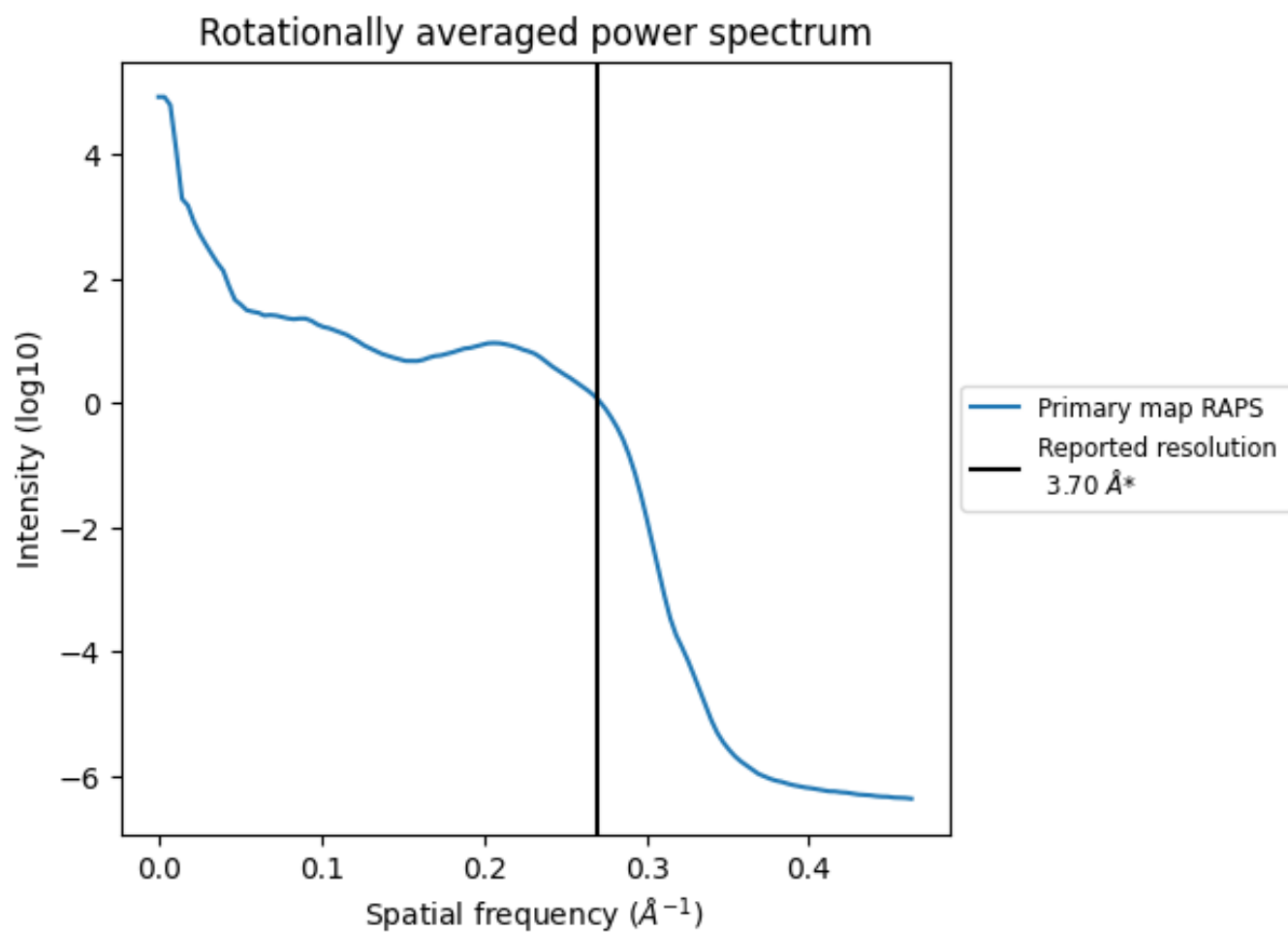
## 7.2 Volume estimate [\(i\)](#)



The volume at the recommended contour level is 207 nm<sup>3</sup>; this corresponds to an approximate mass of 187 kDa.

The volume estimate graph shows how the enclosed volume varies with the contour level. The recommended contour level is shown as a vertical line and the intersection between the line and the curve gives the volume of the enclosed surface at the given level.

### 7.3 Rotationally averaged power spectrum [i](#)



\*Reported resolution corresponds to spatial frequency of  $0.270 \text{\AA}^{-1}$

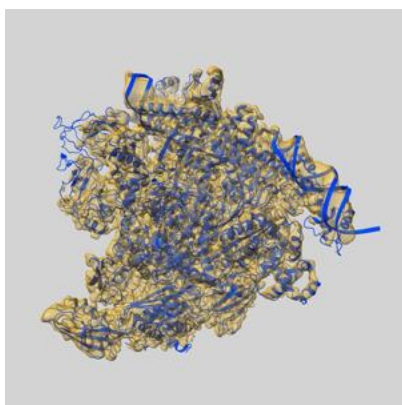
## 8 Fourier-Shell correlation

This section was not generated. No FSC curve or half-maps provided.

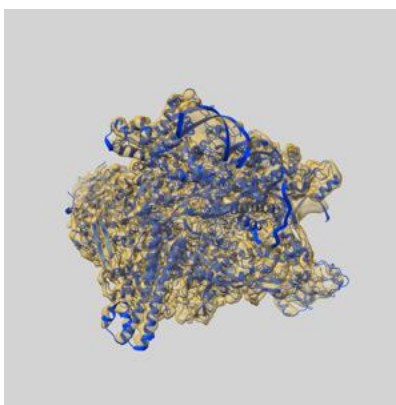
## 9 Map-model fit [i](#)

This section contains information regarding the fit between EMDB map EMD-4397 and PDB model 6GFW. Per-residue inclusion information can be found in section 3 on page 6.

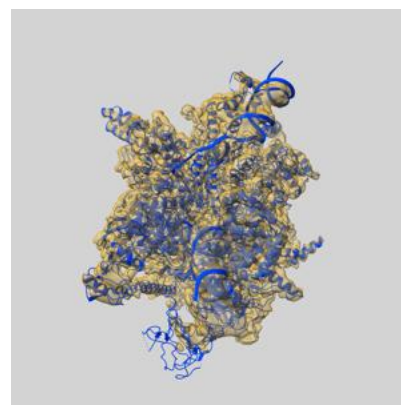
### 9.1 Map-model overlay [i](#)



X



Y

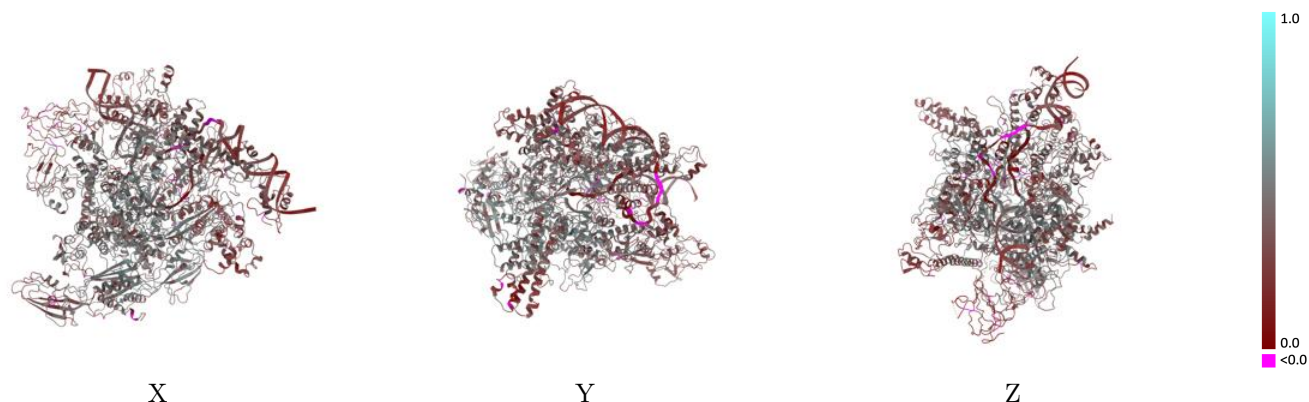


Z

The images above show the 3D surface view of the map at the recommended contour level 0.035 at 50% transparency in yellow overlaid with a ribbon representation of the model coloured in blue. These images allow for the visual assessment of the quality of fit between the atomic model and the map.

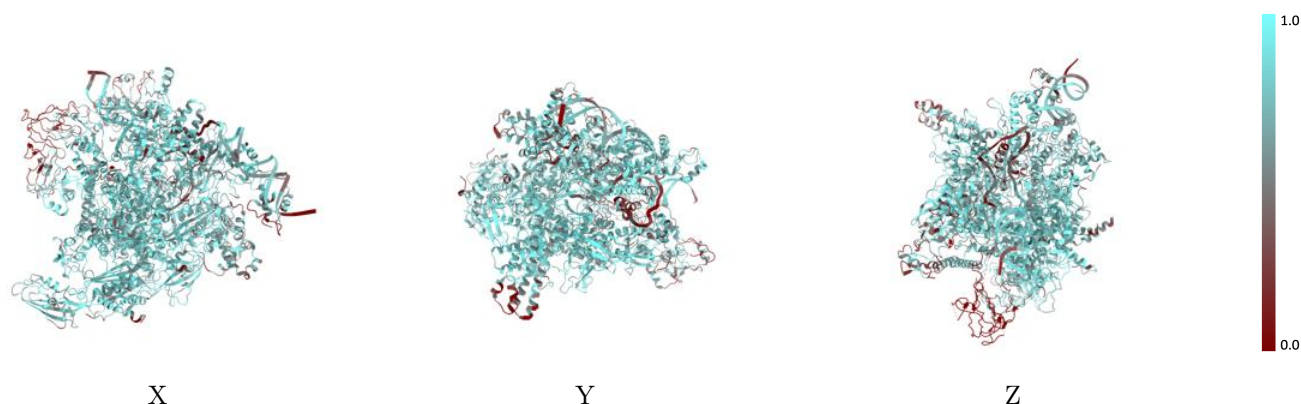


## 9.2 Q-score mapped to coordinate model [i](#)



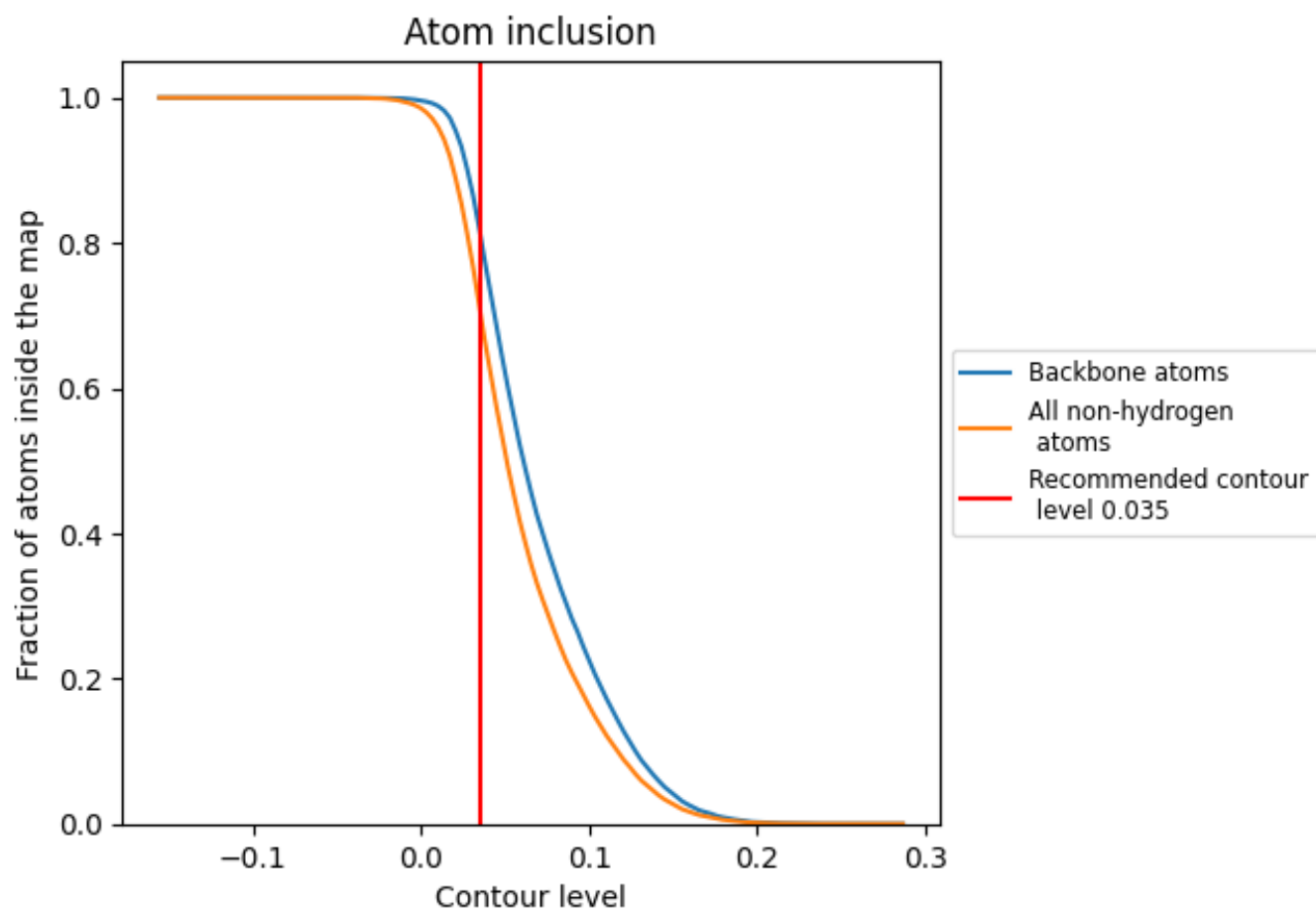
The images above show the model with each residue coloured according to its Q-score. This shows their resolvability in the map with higher Q-score values reflecting better resolvability. Please note: Q-score is calculating the resolvability of atoms, and thus high values are only expected at resolutions at which atoms can be resolved. Low Q-score values may therefore be expected for many entries.

## 9.3 Atom inclusion mapped to coordinate model [i](#)



The images above show the model with each residue coloured according to its atom inclusion. This shows to what extent they are inside the map at the recommended contour level (0.035).





















## 9.4 Atom inclusion [i](#)



At the recommended contour level, 82% of all backbone atoms, 71% of all non-hydrogen atoms, are inside the map.

## 9.5 Map-model fit summary

The table lists the average atom inclusion at the recommended contour level (0.035) and Q-score for the entire model and for each chain.

Chain	Atom inclusion	Q-score
All	 0.7098	 0.3720
A	 0.7877	 0.4350
B	 0.7063	 0.3690
C	 0.7499	 0.3990
D	 0.6994	 0.3750
E	 0.6898	 0.3870
F	 0.6660	 0.2650
G	 0.5634	 0.2190
M	 0.6010	 0.2990
R	 0.8488	 0.4520

