



# Full wwPDB X-ray Structure Validation Report ⓘ

May 13, 2020 – 11:13 am BST

PDB ID : 1GIU  
Title : A TRICHOSANTHIN(TCS) MUTANT(E85R) COMPLEX STRUCTURE WITH ADENINE  
Authors : Guo, Q.; Liu, Y.; Dong, Y.; Rao, Z.  
Deposited on : 2001-03-15  
Resolution : 1.80 Å(reported)

This is a Full wwPDB X-ray Structure Validation Report for a publicly released PDB entry.

We welcome your comments at [validation@mail.wwpdb.org](mailto:validation@mail.wwpdb.org)

A user guide is available at

<https://www.wwpdb.org/validation/2017/XrayValidationReportHelp>

with specific help available everywhere you see the ⓘ symbol.

---

The following versions of software and data (see [references ⓘ](#)) were used in the production of this report:

MolProbity : 4.02b-467  
Mogul : 1.8.5 (274361), CSD as541be (2020)  
Xtrriage (Phenix) : **NOT EXECUTED**  
EDS : **NOT EXECUTED**  
Percentile statistics : 20191225.v01 (using entries in the PDB archive December 25th 2019)  
Ideal geometry (proteins) : Engh & Huber (2001)  
Ideal geometry (DNA, RNA) : Parkinson et al. (1996)  
Validation Pipeline (wwPDB-VP) : 2.11



## 2 Entry composition [i](#)

There are 3 unique types of molecules in this entry. The entry contains 2105 atoms, of which 0 are hydrogens and 0 are deuteriums.

In the tables below, the ZeroOcc column contains the number of atoms modelled with zero occupancy, the AltConf column contains the number of residues with at least one atom in alternate conformation and the Trace column contains the number of residues modelled with at most 2 atoms.

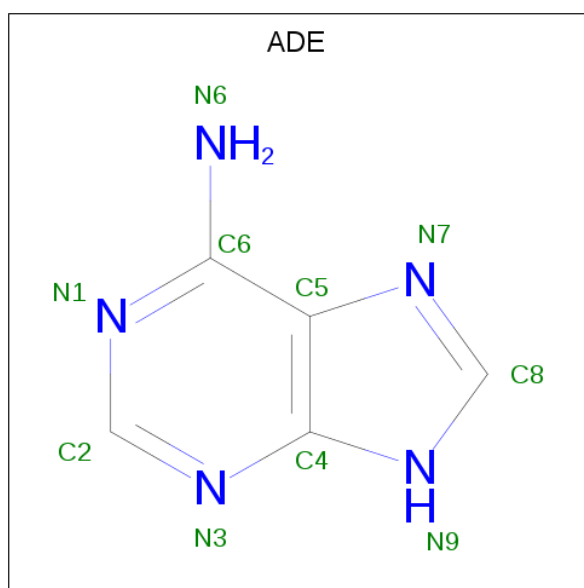
- Molecule 1 is a protein called RIBOSOME-INACTIVATING PROTEIN ALPHA-TRICHOSANTHIN.

Mol	Chain	Residues	Atoms					ZeroOcc	AltConf	Trace
			Total	C	N	O	S			
1	A	247	1915	1213	331	367	4	0	0	0

There is a discrepancy between the modelled and reference sequences:

Chain	Residue	Modelled	Actual	Comment	Reference
A	85	ARG	GLU	ENGINEERED	UNP P09989

- Molecule 2 is ADENINE (three-letter code: ADE) (formula: C<sub>5</sub>H<sub>5</sub>N<sub>5</sub>).



Mol	Chain	Residues	Atoms			ZeroOcc	AltConf
			Total	C	N		
2	A	1	10	5	5	0	0

- Molecule 3 is water.

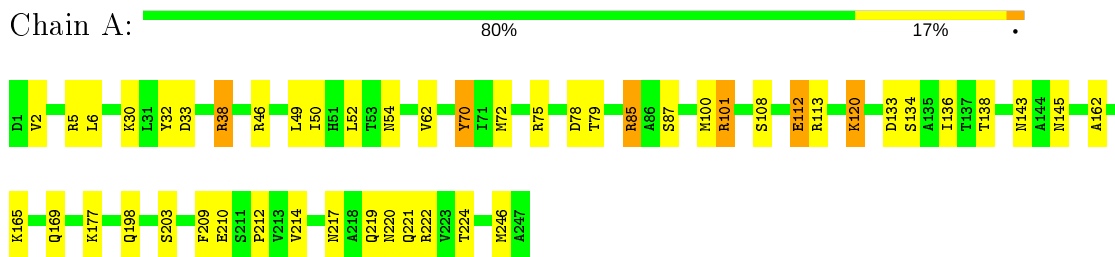
<b>Mol</b>	<b>Chain</b>	<b>Residues</b>	<b>Atoms</b>		<b>ZeroOcc</b>	<b>AltConf</b>
3	A	180	Total 180	O 180	0	0

### 3 Residue-property plots [i](#)

These plots are drawn for all protein, RNA and DNA chains in the entry. The first graphic for a chain summarises the proportions of the various outlier classes displayed in the second graphic. The second graphic shows the sequence view annotated by issues in geometry. Residues are color-coded according to the number of geometric quality criteria for which they contain at least one outlier: green = 0, yellow = 1, orange = 2 and red = 3 or more. Stretches of 2 or more consecutive residues without any outlier are shown as a green connector. Residues present in the sample, but not in the model, are shown in grey.

Note EDS was not executed.

- Molecule 1: RIBOSOME-INACTIVATING PROTEIN ALPHA-TRICHOSANTHIN



## 4 Data and refinement statistics

Xtrriage (Phenix) and EDS were not executed - this section is therefore incomplete.

Property	Value	Source
Space group	P 21 21 21	Depositor
Cell constants a, b, c, $\alpha$ , $\beta$ , $\gamma$	38.00Å 75.30Å 78.40Å 90.00° 90.00° 90.00°	Depositor
Resolution (Å)	50.00 – 1.80	Depositor
% Data completeness (in resolution range)	95.2 (50.00-1.80)	Depositor
$R_{merge}$	0.08	Depositor
$R_{sym}$	(Not available)	Depositor
Refinement program	CNS 1.0	Depositor
R, $R_{free}$	0.210 , 0.247	Depositor
Estimated twinning fraction	No twinning to report.	Xtrriage
Total number of atoms	2105	wwPDB-VP
Average B, all atoms (Å <sup>2</sup> )	19.0	wwPDB-VP

## 5 Model quality [i](#)

### 5.1 Standard geometry [i](#)

Bond lengths and bond angles in the following residue types are not validated in this section: ADE

The Z score for a bond length (or angle) is the number of standard deviations the observed value is removed from the expected value. A bond length (or angle) with  $|Z| > 5$  is considered an outlier worth inspection. RMSZ is the root-mean-square of all Z scores of the bond lengths (or angles).

Mol	Chain	Bond lengths		Bond angles	
		RMSZ	# Z  >5	RMSZ	# Z  >5
1	A	1.24	7/1947 (0.4%)	1.18	14/2644 (0.5%)

Chiral center outliers are detected by calculating the chiral volume of a chiral center and verifying if the center is modelled as a planar moiety or with the opposite hand. A planarity outlier is detected by checking planarity of atoms in a peptide group, atoms in a mainchain group or atoms of a sidechain that are expected to be planar.

Mol	Chain	#Chirality outliers	#Planarity outliers
1	A	0	1

All (7) bond length outliers are listed below:

Mol	Chain	Res	Type	Atoms	Z	Observed(Å)	Ideal(Å)
1	A	72	MET	SD-CE	-9.99	1.22	1.77
1	A	210	GLU	CG-CD	7.12	1.62	1.51
1	A	112	GLU	CG-CD	6.82	1.62	1.51
1	A	2	VAL	CB-CG1	-6.25	1.39	1.52
1	A	112	GLU	CB-CG	6.19	1.64	1.52
1	A	162	ALA	CA-CB	5.02	1.62	1.52
1	A	120	LYS	CD-CE	5.01	1.63	1.51

All (14) bond angle outliers are listed below:

Mol	Chain	Res	Type	Atoms	Z	Observed(°)	Ideal(°)
1	A	38	ARG	NE-CZ-NH2	-11.09	114.76	120.30
1	A	222	ARG	NE-CZ-NH1	11.06	125.83	120.30
1	A	222	ARG	NE-CZ-NH2	-8.48	116.06	120.30
1	A	38	ARG	NE-CZ-NH1	7.60	124.10	120.30
1	A	46	ARG	NE-CZ-NH1	6.92	123.76	120.30
1	A	75	ARG	NE-CZ-NH2	6.49	123.55	120.30

*Continued on next page...*

Continued from previous page...

Mol	Chain	Res	Type	Atoms	Z	Observed(°)	Ideal(°)
1	A	100	MET	CG-SD-CE	-6.41	89.94	100.20
1	A	108	SER	C-N-CA	-6.17	109.35	122.30
1	A	246	MET	N-CA-C	-6.15	94.40	111.00
1	A	75	ARG	NE-CZ-NH1	-5.84	117.38	120.30
1	A	46	ARG	NE-CZ-NH2	-5.70	117.45	120.30
1	A	85	ARG	NE-CZ-NH1	5.44	123.02	120.30
1	A	108	SER	N-CA-C	-5.23	96.88	111.00
1	A	101	ARG	NE-CZ-NH1	5.19	122.89	120.30

There are no chirality outliers.

All (1) planarity outliers are listed below:

Mol	Chain	Res	Type	Group
1	A	70	TYR	Sidechain

## 5.2 Too-close contacts [i](#)

In the following table, the Non-H and H(model) columns list the number of non-hydrogen atoms and hydrogen atoms in the chain respectively. The H(added) column lists the number of hydrogen atoms added and optimized by MolProbity. The Clashes column lists the number of clashes within the asymmetric unit, whereas Symm-Clashes lists symmetry related clashes.

Mol	Chain	Non-H	H(model)	H(added)	Clashes	Symm-Clashes
1	A	1915	0	1939	51	0
2	A	10	0	4	1	0
3	A	180	0	0	7	0
All	All	2105	0	1943	51	0

The all-atom clashscore is defined as the number of clashes found per 1000 atoms (including hydrogen atoms). The all-atom clashscore for this structure is 13.

All (51) close contacts within the same asymmetric unit are listed below, sorted by their clash magnitude.

Atom-1	Atom-2	Interatomic distance (Å)	Clash overlap (Å)
1:A:143:ASN:HD21	1:A:145:ASN:HB2	1.13	1.12
1:A:79:THR:HG21	1:A:101:ARG:NH1	1.63	1.11
1:A:177:LYS:HB2	1:A:177:LYS:NZ	1.84	0.93
1:A:50:ILE:CG1	1:A:62:VAL:HB	2.05	0.86
1:A:85:ARG:NH2	3:A:476:HOH:O	2.09	0.85

Continued on next page...



*Continued from previous page...*

Atom-1	Atom-2	Interatomic distance (Å)	Clash overlap (Å)
1:A:50:ILE:HG13	1:A:62:VAL:HB	1.64	0.78
1:A:177:LYS:HB2	1:A:177:LYS:HZ2	1.45	0.78
1:A:143:ASN:ND2	1:A:145:ASN:HB2	1.95	0.76
1:A:79:THR:CG2	1:A:101:ARG:NH1	2.48	0.76
1:A:49:LEU:HD22	1:A:49:LEU:N	2.02	0.75
1:A:134:SER:O	1:A:138:THR:HG23	1.87	0.74
1:A:78:ASP:OD2	1:A:79:THR:HG22	1.88	0.73
1:A:177:LYS:NZ	1:A:177:LYS:CB	2.49	0.72
1:A:214:VAL:HG12	3:A:455:HOH:O	1.90	0.71
1:A:217:ASN:ND2	1:A:221:GLN:HB2	2.06	0.70
1:A:219:GLN:HB2	1:A:221:GLN:HG3	1.78	0.65
1:A:79:THR:HB	1:A:101:ARG:HD3	1.79	0.64
1:A:6:LEU:HD13	1:A:133:ASP:HA	1.78	0.64
1:A:79:THR:HG21	1:A:101:ARG:HH11	1.61	0.64
1:A:78:ASP:C	1:A:78:ASP:OD2	2.37	0.62
1:A:177:LYS:HZ3	1:A:177:LYS:CB	2.13	0.62
1:A:54:ASN:HB2	1:A:133:ASP:OD2	2.01	0.61
1:A:120:LYS:HD3	3:A:430:HOH:O	2.03	0.58
1:A:85:ARG:HD3	1:A:87:SER:OG	2.03	0.57
1:A:79:THR:CG2	1:A:101:ARG:HH11	2.17	0.56
1:A:79:THR:HG21	1:A:101:ARG:CZ	2.34	0.55
1:A:217:ASN:HD21	1:A:221:GLN:HB2	1.72	0.54
1:A:5:ARG:NE	3:A:449:HOH:O	2.32	0.53
1:A:6:LEU:CD1	1:A:133:ASP:HA	2.39	0.52
1:A:112:GLU:HB2	1:A:113:ARG:HH21	1.75	0.51
1:A:217:ASN:CG	1:A:221:GLN:HB2	2.30	0.51
1:A:70:TYR:HA	2:A:300:ADE:C2	2.46	0.51
1:A:221:GLN:OE1	3:A:361:HOH:O	2.19	0.50
1:A:6:LEU:HD13	1:A:133:ASP:CA	2.40	0.50
1:A:219:GLN:CB	1:A:221:GLN:HG3	2.41	0.50
1:A:49:LEU:CD2	1:A:49:LEU:N	2.72	0.50
1:A:177:LYS:HB2	1:A:177:LYS:HZ3	1.68	0.49
1:A:214:VAL:HG13	1:A:214:VAL:O	2.15	0.47
1:A:50:ILE:HG13	1:A:50:ILE:O	2.14	0.47
1:A:112:GLU:HB2	1:A:113:ARG:NH2	2.30	0.47
1:A:143:ASN:ND2	3:A:359:HOH:O	2.47	0.47
1:A:30:LYS:HE2	1:A:33:ASP:OD1	2.16	0.45
1:A:38:ARG:NH2	3:A:374:HOH:O	2.48	0.45
1:A:165:LYS:O	1:A:169:GLN:HG3	2.16	0.45
1:A:212:PRO:HB2	1:A:224:THR:HG23	1.97	0.45
1:A:6:LEU:HD13	1:A:133:ASP:HB2	1.97	0.44

*Continued on next page...*

*Continued from previous page...*

Atom-1	Atom-2	Interatomic distance (Å)	Clash overlap (Å)
1:A:32:TYR:OH	1:A:203:SER:HA	2.18	0.44
1:A:198:GLN:HB3	1:A:209:PHE:CG	2.52	0.43
1:A:219:GLN:O	1:A:220:ASN:HB2	2.19	0.42
1:A:6:LEU:CD1	1:A:136:ILE:HD12	2.50	0.42
1:A:50:ILE:HD12	1:A:52:LEU:HD22	2.03	0.40

There are no symmetry-related clashes.

### 5.3 Torsion angles [i](#)

#### 5.3.1 Protein backbone [i](#)

There are no protein backbone outliers to report in this entry.

#### 5.3.2 Protein sidechains [i](#)

There are no protein residues with a non-rotameric sidechain to report in this entry.

#### 5.3.3 RNA [i](#)

There are no RNA molecules in this entry.

### 5.4 Non-standard residues in protein, DNA, RNA chains [i](#)

There are no non-standard protein/DNA/RNA residues in this entry.

### 5.5 Carbohydrates [i](#)

There are no carbohydrates in this entry.

### 5.6 Ligand geometry [i](#)

1 ligand is modelled in this entry.

In the following table, the Counts columns list the number of bonds (or angles) for which Mogul statistics could be retrieved, the number of bonds (or angles) that are observed in the model and the number of bonds (or angles) that are defined in the Chemical Component Dictionary. The Link column lists molecule types, if any, to which the group is linked. The Z score for a bond

length (or angle) is the number of standard deviations the observed value is removed from the expected value. A bond length (or angle) with  $|Z| > 2$  is considered an outlier worth inspection. RMSZ is the root-mean-square of all Z scores of the bond lengths (or angles).

Mol	Type	Chain	Res	Link	Bond lengths			Bond angles		
					Counts	RMSZ	# Z  > 2	Counts	RMSZ	# Z  > 2
2	ADE	A	300	-	9,11,11	1.49	2 (22%)	7,15,15	1.34	1 (14%)

In the following table, the Chirals column lists the number of chiral outliers, the number of chiral centers analysed, the number of these observed in the model and the number defined in the Chemical Component Dictionary. Similar counts are reported in the Torsion and Rings columns. '-' means no outliers of that kind were identified.

Mol	Type	Chain	Res	Link	Chirals	Torsions	Rings
2	ADE	A	300	-	-	-	0/2/2/2

All (2) bond length outliers are listed below:

Mol	Chain	Res	Type	Atoms	Z	Observed(Å)	Ideal(Å)
2	A	300	ADE	C4-N9	2.53	1.39	1.34
2	A	300	ADE	C4-N3	2.34	1.40	1.37

All (1) bond angle outliers are listed below:

Mol	Chain	Res	Type	Atoms	Z	Observed(°)	Ideal(°)
2	A	300	ADE	C5-C6-N6	2.48	124.12	120.35

There are no chirality outliers.

There are no torsion outliers.

There are no ring outliers.

1 monomer is involved in 1 short contact:

Mol	Chain	Res	Type	Clashes	Symm-Clashes
2	A	300	ADE	1	0

## 5.7 Other polymers [i](#)

There are no such residues in this entry.

## 5.8 Polymer linkage issues

There are no chain breaks in this entry.

## 6 Fit of model and data

### 6.1 Protein, DNA and RNA chains

EDS was not executed - this section is therefore empty.

### 6.2 Non-standard residues in protein, DNA, RNA chains

EDS was not executed - this section is therefore empty.

### 6.3 Carbohydrates

EDS was not executed - this section is therefore empty.

### 6.4 Ligands

EDS was not executed - this section is therefore empty.

### 6.5 Other polymers

EDS was not executed - this section is therefore empty.