



# Full wwPDB X-ray Structure Validation Report ⓘ

Jun 18, 2024 – 09:30 AM EDT

PDB ID : 4GI1  
Title : Structure of the complex of three phase partition treated lipase from *Thermomyces lanuginosa* with 16-hydroxypalmitic acid at 2.4 Å resolution  
Authors : Kumar, M.; Sinha, M.; Mukherjee, J.; Gupta, M.N.; Kaur, P.; Sharma, S.; Singh, T.P.  
Deposited on : 2012-08-08  
Resolution : 2.43 Å (reported)

This is a Full wwPDB X-ray Structure Validation Report for a publicly released PDB entry.

We welcome your comments at [validation@mail.wwpdb.org](mailto:validation@mail.wwpdb.org)

A user guide is available at

<https://www.wwpdb.org/validation/2017/XrayValidationReportHelp>

with specific help available everywhere you see the ⓘ symbol.

The types of validation reports are described at

<http://www.wwpdb.org/validation/2017/FAQs#types>.

---

The following versions of software and data (see [references ⓘ](#)) were used in the production of this report:

MolProbity : 4.02b-467  
Mogul : 2022.3.0, CSD as543be (2022)  
Xtriage (Phenix) : 1.20.1  
EDS : 2.37.1  
buster-report : 1.1.7 (2018)  
Percentile statistics : 20191225.v01 (using entries in the PDB archive December 25th 2019)  
Refmac : 5.8.0158  
CCP4 : 7.0.044 (Gargrove)  
Ideal geometry (proteins) : Engh & Huber (2001)  
Ideal geometry (DNA, RNA) : Parkinson et al. (1996)  
Validation Pipeline (wwPDB-VP) : 2.37.1

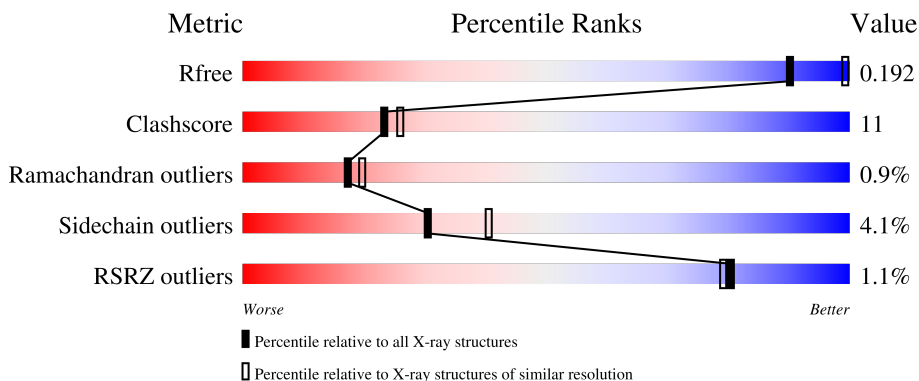
# 1 Overall quality at a glance i

The following experimental techniques were used to determine the structure:

*X-RAY DIFFRACTION*

The reported resolution of this entry is 2.43 Å.

Percentile scores (ranging between 0-100) for global validation metrics of the entry are shown in the following graphic. The table shows the number of entries on which the scores are based.



Metric	Whole archive (#Entries)	Similar resolution (#Entries, resolution range(Å))
$R_{free}$	130704	1564 (2.46-2.42)
Clashscore	141614	1631 (2.46-2.42)
Ramachandran outliers	138981	1617 (2.46-2.42)
Sidechain outliers	138945	1617 (2.46-2.42)
RSRZ outliers	127900	1547 (2.46-2.42)

The table below summarises the geometric issues observed across the polymeric chains and their fit to the electron density. The red, orange, yellow and green segments of the lower bar indicate the fraction of residues that contain outliers for  $\geq 3$ , 2, 1 and 0 types of geometric quality criteria respectively. A grey segment represents the fraction of residues that are not modelled. The numeric value for each fraction is indicated below the corresponding segment, with a dot representing fractions  $\leq 5\%$ . The upper red bar (where present) indicates the fraction of residues that have poor fit to the electron density. The numeric value is given above the bar.

Mol	Chain	Length	Quality of chain
1	A	269	 77% 21%
1	B	269	 78% 19%

The following table lists non-polymeric compounds, carbohydrate monomers and non-standard residues in protein, DNA, RNA chains that are outliers for geometric or electron-density-fit criteria:

Mol	Type	Chain	Res	Chirality	Geometry	Clashes	Electron density
3	16Y	B	302	-	-	X	-

## 2 Entry composition [i](#)

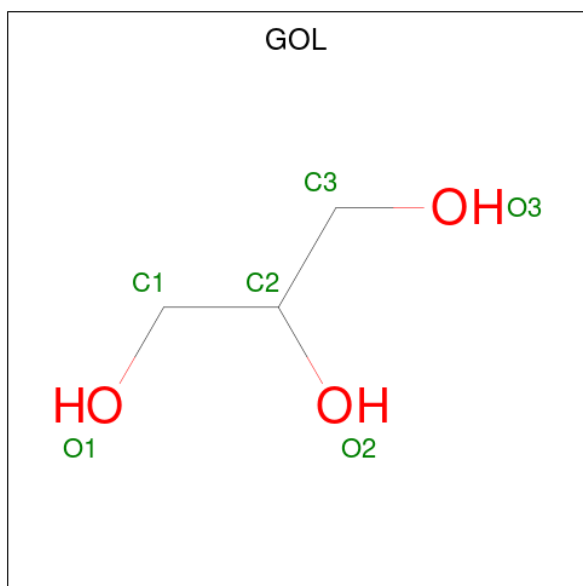
There are 4 unique types of molecules in this entry. The entry contains 4384 atoms, of which 0 are hydrogens and 0 are deuteriums.

In the tables below, the ZeroOcc column contains the number of atoms modelled with zero occupancy, the AltConf column contains the number of residues with at least one atom in alternate conformation and the Trace column contains the number of residues modelled with at most 2 atoms.

- Molecule 1 is a protein called Lipase.

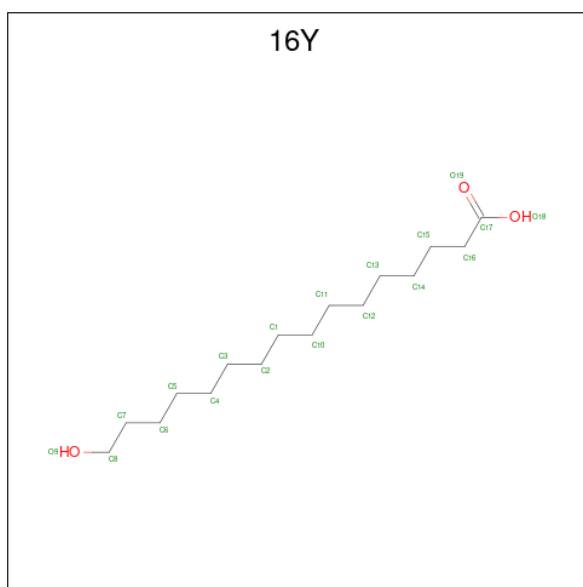
Mol	Chain	Residues	Atoms					ZeroOcc	AltConf	Trace
			Total	C	N	O	S			
1	A	269	Total 2071	C 1303	N 359	O 403	S 6	0	0	0
1	B	269	Total 2071	C 1303	N 359	O 403	S 6	0	0	0

- Molecule 2 is GLYCEROL (three-letter code: GOL) (formula: C<sub>3</sub>H<sub>8</sub>O<sub>3</sub>).



Mol	Chain	Residues	Atoms			ZeroOcc	AltConf
			Total	C	O		
2	A	1	Total 6	C 3	O 3	0	0
2	B	1	Total 6	C 3	O 3	0	0

- Molecule 3 is 16-hydroxyhexadecanoic acid (three-letter code: 16Y) (formula: C<sub>16</sub>H<sub>32</sub>O<sub>3</sub>).



Mol	Chain	Residues	Atoms	ZeroOcc	AltConf
3	A	1	Total C O 19 16 3	0	0
3	B	1	Total C O 19 16 3	0	0

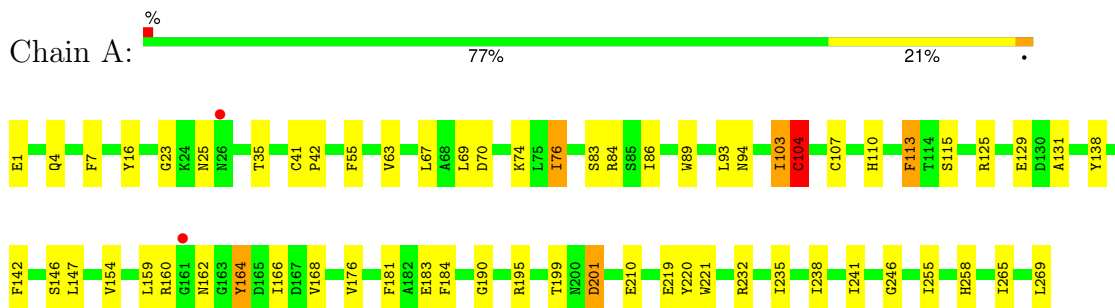
- Molecule 4 is water.

Mol	Chain	Residues	Atoms	ZeroOcc	AltConf
4	A	99	Total O 99 99	0	0
4	B	93	Total O 93 93	0	0

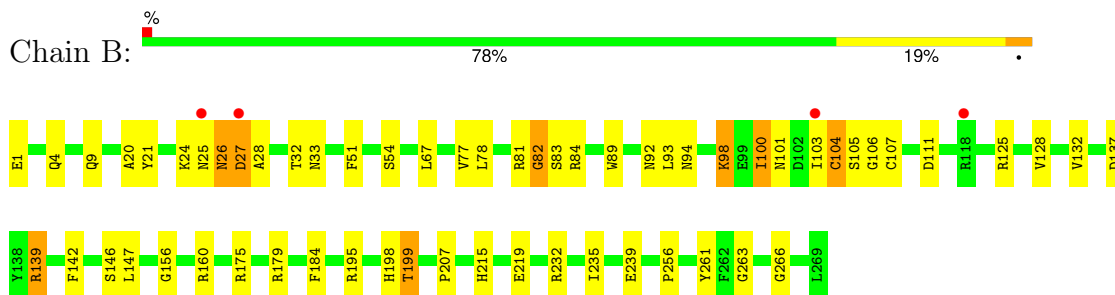
### 3 Residue-property plots [i](#)

These plots are drawn for all protein, RNA, DNA and oligosaccharide chains in the entry. The first graphic for a chain summarises the proportions of the various outlier classes displayed in the second graphic. The second graphic shows the sequence view annotated by issues in geometry and electron density. Residues are color-coded according to the number of geometric quality criteria for which they contain at least one outlier: green = 0, yellow = 1, orange = 2 and red = 3 or more. A red dot above a residue indicates a poor fit to the electron density ( $RSRZ > 2$ ). Stretches of 2 or more consecutive residues without any outlier are shown as a green connector. Residues present in the sample, but not in the model, are shown in grey.

- Molecule 1: Lipase



- Molecule 1: Lipase



## 4 Data and refinement statistics

Property	Value	Source
Space group	P 61	Depositor
Cell constants a, b, c, $\alpha$ , $\beta$ , $\gamma$	140.84Å 140.84Å 80.58Å 90.00° 90.00° 120.00°	Depositor
Resolution (Å)	50.00 – 2.43 46.10 – 2.43	Depositor EDS
% Data completeness (in resolution range)	96.4 (50.00-2.43) 96.3 (46.10-2.43)	Depositor EDS
$R_{merge}$	(Not available)	Depositor
$R_{sym}$	0.10	Depositor
$\langle I/\sigma(I) \rangle$ <sup>1</sup>	2.11 (at 2.42Å)	Xtriage
Refinement program	REFMAC 5.5.0109	Depositor
R, $R_{free}$	0.163 , 0.205 0.158 , 0.192	Depositor DCC
$R_{free}$ test set	1688 reflections (5.08%)	wwPDB-VP
Wilson B-factor (Å <sup>2</sup> )	40.1	Xtriage
Anisotropy	0.372	Xtriage
Bulk solvent $k_{sol}$ (e/Å <sup>3</sup> ), $B_{sol}$ (Å <sup>2</sup> )	0.35 , 21.6	EDS
L-test for twinning <sup>2</sup>	$\langle  L  \rangle = 0.39$ , $\langle L^2 \rangle = 0.22$	Xtriage
Estimated twinning fraction	0.306 for h,-h-k,-l	Xtriage
Reported twinning fraction	0.678 for H, K, L 0.322 for h+k,-k,-l	Depositor
Outliers	0 of 33211 reflections	Xtriage
$F_o, F_c$ correlation	0.95	EDS
Total number of atoms	4384	wwPDB-VP
Average B, all atoms (Å <sup>2</sup> )	38.0	wwPDB-VP

Xtriage's analysis on translational NCS is as follows: *The largest off-origin peak in the Patterson function is 2.90% of the height of the origin peak. No significant pseudotranslation is detected.*

<sup>1</sup>Intensities estimated from amplitudes.

<sup>2</sup>Theoretical values of  $\langle |L| \rangle$ ,  $\langle L^2 \rangle$  for acentric reflections are 0.5, 0.333 respectively for untwinned datasets, and 0.375, 0.2 for perfectly twinned datasets.

## 5 Model quality [i](#)

### 5.1 Standard geometry [i](#)

Bond lengths and bond angles in the following residue types are not validated in this section: GOL, 16Y

The Z score for a bond length (or angle) is the number of standard deviations the observed value is removed from the expected value. A bond length (or angle) with  $|Z| > 5$  is considered an outlier worth inspection. RMSZ is the root-mean-square of all Z scores of the bond lengths (or angles).

Mol	Chain	Bond lengths		Bond angles	
		RMSZ	# Z  >5	RMSZ	# Z  >5
1	A	1.19	6/2121 (0.3%)	1.03	2/2887 (0.1%)
1	B	1.17	0/2121	0.98	1/2887 (0.0%)
All	All	1.18	6/4242 (0.1%)	1.01	3/5774 (0.1%)

All (6) bond length outliers are listed below:

Mol	Chain	Res	Type	Atoms	Z	Observed(Å)	Ideal(Å)
1	A	210	GLU	CG-CD	5.96	1.60	1.51
1	A	220	TYR	CD1-CE1	5.60	1.47	1.39
1	A	221	TRP	CE3-CZ3	5.44	1.47	1.38
1	A	164	TYR	CD2-CE2	5.42	1.47	1.39
1	A	113	PHE	CE1-CZ	5.27	1.47	1.37
1	A	104	CYS	CB-SG	-5.02	1.73	1.81

All (3) bond angle outliers are listed below:

Mol	Chain	Res	Type	Atoms	Z	Observed(°)	Ideal(°)
1	A	201	ASP	CB-CG-OD1	5.75	123.48	118.30
1	A	84	ARG	NE-CZ-NH1	5.60	123.10	120.30
1	B	125	ARG	NE-CZ-NH1	5.20	122.90	120.30

There are no chirality outliers.

There are no planarity outliers.

### 5.2 Too-close contacts [i](#)

In the following table, the Non-H and H(model) columns list the number of non-hydrogen atoms and hydrogen atoms in the chain respectively. The H(added) column lists the number of hydrogen atoms added and optimized by MolProbity. The Clashes column lists the number of clashes within



the asymmetric unit, whereas Symm-Clashes lists symmetry-related clashes.

Mol	Chain	Non-H	H(model)	H(added)	Clashes	Symm-Clashes
1	A	2071	0	1965	48	0
1	B	2071	0	1965	45	0
2	A	6	0	8	1	0
2	B	6	0	8	0	0
3	A	19	0	31	5	0
3	B	19	0	31	9	0
4	A	99	0	0	0	0
4	B	93	0	0	0	0
All	All	4384	0	4008	92	0

The all-atom clashscore is defined as the number of clashes found per 1000 atoms (including hydrogen atoms). The all-atom clashscore for this structure is 11.

All (92) close contacts within the same asymmetric unit are listed below, sorted by their clash magnitude.

Atom-1	Atom-2	Interatomic distance (Å)	Clash overlap (Å)
1:A:103:ILE:HD12	1:A:103:ILE:O	1.46	1.16
1:B:89:TRP:HA	3:B:302:16Y:H8	1.32	1.04
1:B:20:ALA:HB1	1:B:81:ARG:HB2	1.41	1.02
1:B:26:ASN:O	1:B:27:ASP:HB2	1.61	1.01
1:B:98:LYS:HB3	1:B:111:ASP:HB2	1.52	0.90
1:B:156:GLY:O	1:B:160:ARG:HG3	1.74	0.87
1:A:103:ILE:HG13	1:A:104:CYS:HB2	1.57	0.87
1:B:83:SER:OG	3:B:302:16Y:H16	1.77	0.85
1:A:103:ILE:O	1:A:103:ILE:CD1	2.30	0.78
1:B:20:ALA:CB	1:B:81:ARG:HB2	2.19	0.71
1:B:81:ARG:O	3:B:302:16Y:H28	1.91	0.70
1:A:164:TYR:CE2	1:A:166:ILE:HD11	2.27	0.69
1:B:9:GLN:NE2	1:B:139:ARG:HH22	1.92	0.67
1:B:128:VAL:O	1:B:132:VAL:HG23	1.95	0.67
1:A:1:GLU:HB2	1:A:235:ILE:O	1.95	0.66
1:B:195:ARG:NH1	1:B:219:GLU:HB2	2.10	0.66
1:A:160:ARG:HG2	1:A:190:GLY:O	1.95	0.66
1:A:125:ARG:HG3	1:A:159:LEU:HD22	1.78	0.65
1:B:93:LEU:HA	3:B:302:16Y:H4	1.77	0.65
1:A:94:ASN:HB3	3:A:302:16Y:O19	1.97	0.64
1:A:4:GLN:HE21	1:A:232:ARG:HD2	1.63	0.63
1:A:74:LYS:HG2	1:A:138:TYR:CE1	2.33	0.63
1:B:4:GLN:HA	1:B:232:ARG:HD2	1.79	0.63
1:A:83:SER:HA	3:A:302:16Y:H20	1.80	0.62

*Continued on next page...*

*Continued from previous page...*

Atom-1	Atom-2	Interatomic distance (Å)	Clash overlap (Å)
1:A:110:HIS:CE1	1:A:113:PHE:CD1	2.87	0.62
1:B:1:GLU:HB3	1:B:235:ILE:O	2.01	0.61
1:A:164:TYR:HE2	1:A:166:ILE:HD11	1.64	0.60
1:A:4:GLN:HE21	1:A:232:ARG:CD	2.15	0.60
1:B:100:ILE:HG13	1:B:107:CYS:O	2.02	0.60
1:B:9:GLN:HE21	1:B:139:ARG:HH22	1.50	0.60
1:A:103:ILE:CG1	1:A:104:CYS:HB2	2.33	0.57
1:B:84:ARG:H	3:B:302:16Y:H20	1.69	0.57
1:A:110:HIS:ND1	1:A:113:PHE:CG	2.72	0.57
1:A:110:HIS:CE1	1:A:113:PHE:H	2.23	0.56
1:A:201:ASP:OD1	1:A:258:HIS:HB2	2.07	0.55
1:B:89:TRP:CD1	3:B:302:16Y:H6	2.41	0.55
1:B:26:ASN:HD22	1:B:54:SER:HB3	1.73	0.54
1:A:195:ARG:NH1	1:A:219:GLU:HB2	2.23	0.54
1:B:137:ASP:OD1	1:B:137:ASP:N	2.36	0.54
1:A:146:SER:O	1:A:147:LEU:C	2.45	0.54
1:B:83:SER:HA	3:B:302:16Y:H20	1.90	0.53
1:A:125:ARG:HG3	1:A:159:LEU:CD2	2.39	0.52
1:B:25:ASN:HB3	1:B:51:PHE:CE1	2.46	0.51
1:A:69:LEU:HD11	1:A:138:TYR:CE2	2.46	0.51
1:A:110:HIS:CE1	1:A:113:PHE:CE1	2.99	0.51
1:A:7:PHE:CD2	1:A:7:PHE:C	2.84	0.51
1:B:81:ARG:HD3	1:B:82:GLY:O	2.10	0.51
1:A:89:TRP:CD1	3:A:302:16Y:H6	2.47	0.50
1:A:147:LEU:HD23	3:A:302:16Y:H27	1.94	0.50
1:B:104:CYS:SG	1:B:107:CYS:CB	2.99	0.50
1:A:86:ILE:HG12	2:A:301:GOL:O3	2.12	0.49
1:B:104:CYS:CB	1:B:107:CYS:SG	3.00	0.49
1:A:76:ILE:HD12	1:A:131:ALA:HB1	1.95	0.48
1:B:175:ARG:HD2	1:B:207:PRO:O	2.14	0.47
1:B:92:ASN:HB2	3:B:302:16Y:H9	1.97	0.47
1:A:55:PHE:HE1	1:A:63:VAL:HG12	1.79	0.47
1:A:265:ILE:O	1:A:265:ILE:HG23	2.15	0.47
1:B:103:ILE:HG22	1:B:184:PHE:CE2	2.49	0.47
1:A:93:LEU:HA	3:A:302:16Y:H4	1.97	0.47
1:A:16:TYR:OH	1:A:70:ASP:HB2	2.15	0.46
1:B:9:GLN:NE2	1:B:139:ARG:NH2	2.62	0.46
1:B:26:ASN:ND2	1:B:54:SER:HB3	2.30	0.46
1:B:101:ASN:ND2	1:B:106:GLY:H	2.13	0.46
1:B:179:ARG:O	1:B:179:ARG:HG3	2.15	0.45
1:A:41:CYS:N	1:A:42:PRO:HD3	2.32	0.44

*Continued on next page...*

Continued from previous page...

Atom-1	Atom-2	Interatomic distance (Å)	Clash overlap (Å)
1:A:67:LEU:HD11	1:A:76:ILE:HG22	1.98	0.44
1:A:41:CYS:N	1:A:42:PRO:CD	2.80	0.44
1:B:81:ARG:CD	1:B:82:GLY:O	2.65	0.44
1:A:142:PHE:HB2	1:A:168:VAL:HG22	2.00	0.44
1:B:78:LEU:HB3	1:B:142:PHE:CD1	2.51	0.44
1:A:1:GLU:CB	1:A:235:ILE:O	2.64	0.44
1:A:103:ILE:CD1	1:A:184:PHE:CE2	3.01	0.43
1:A:104:CYS:HB3	1:A:107:CYS:HB2	1.57	0.43
1:B:25:ASN:HB3	1:B:51:PHE:CZ	2.53	0.43
1:B:25:ASN:O	1:B:26:ASN:HB2	2.18	0.43
1:A:110:HIS:ND1	1:A:113:PHE:CD1	2.87	0.43
1:A:41:CYS:SG	1:A:41:CYS:O	2.77	0.42
1:A:125:ARG:HD2	1:A:129:GLU:OE2	2.19	0.42
1:B:21:TYR:CZ	1:B:266:GLY:HA2	2.54	0.42
1:A:23:GLY:HA2	1:A:35:THR:O	2.20	0.42
1:B:26:ASN:H	1:B:28:ALA:HB3	1.85	0.42
1:B:101:ASN:HA	1:B:104:CYS:O	2.20	0.42
1:B:147:LEU:HD23	3:B:302:16Y:H27	2.00	0.42
1:A:183:GLU:HG3	1:A:241:ILE:HD13	2.01	0.41
1:B:32:THR:HG22	1:B:33:ASN:O	2.20	0.41
1:B:261:TYR:C	1:B:263:GLY:H	2.23	0.41
1:A:154:VAL:CG2	1:A:176:VAL:HG21	2.51	0.41
1:A:269:LEU:HB3	1:B:256:PRO:HB3	2.03	0.41
1:B:198:HIS:O	1:B:199:THR:C	2.59	0.41
1:A:238:ILE:HD13	1:A:246:GLY:HA3	2.03	0.41
1:B:67:LEU:HA	1:B:77:VAL:O	2.21	0.41
1:A:103:ILE:CD1	1:A:104:CYS:HB2	2.51	0.40

There are no symmetry-related clashes.

## 5.3 Torsion angles

### 5.3.1 Protein backbone

In the following table, the Percentiles column shows the percent Ramachandran outliers of the chain as a percentile score with respect to all X-ray entries followed by that with respect to entries of similar resolution.

The Analysed column shows the number of residues for which the backbone conformation was analysed, and the total number of residues.

Mol	Chain	Analysed	Favoured	Allowed	Outliers	Percentiles	
1	A	267/269 (99%)	246 (92%)	18 (7%)	3 (1%)	14	15
1	B	267/269 (99%)	252 (94%)	13 (5%)	2 (1%)	22	26
All	All	534/538 (99%)	498 (93%)	31 (6%)	5 (1%)	17	20

All (5) Ramachandran outliers are listed below:

Mol	Chain	Res	Type
1	A	25	ASN
1	B	82	GLY
1	B	199	THR
1	A	104	CYS
1	A	199	THR

### 5.3.2 Protein sidechains [i](#)

In the following table, the Percentiles column shows the percent sidechain outliers of the chain as a percentile score with respect to all X-ray entries followed by that with respect to entries of similar resolution.

The Analysed column shows the number of residues for which the sidechain conformation was analysed, and the total number of residues.

Mol	Chain	Analysed	Rotameric	Outliers	Percentiles	
1	A	220/220 (100%)	214 (97%)	6 (3%)	44	57
1	B	220/220 (100%)	208 (94%)	12 (6%)	21	28
All	All	440/440 (100%)	422 (96%)	18 (4%)	30	40

All (18) residues with a non-rotameric sidechain are listed below:

Mol	Chain	Res	Type
1	A	76	ILE
1	A	103	ILE
1	A	115	SER
1	A	162	ASN
1	A	181	PHE
1	A	255	ILE
1	B	24	LYS
1	B	26	ASN
1	B	27	ASP
1	B	94	ASN
1	B	98	LYS

*Continued on next page...*

*Continued from previous page...*

Mol	Chain	Res	Type
1	B	100	ILE
1	B	104	CYS
1	B	105	SER
1	B	139	ARG
1	B	146	SER
1	B	215	HIS
1	B	239	GLU

Sometimes sidechains can be flipped to improve hydrogen bonding and reduce clashes. All (9) such sidechains are listed below:

Mol	Chain	Res	Type
1	A	4	GLN
1	A	135	HIS
1	B	9	GLN
1	B	26	ASN
1	B	88	ASN
1	B	92	ASN
1	B	101	ASN
1	B	162	ASN
1	B	233	ASN

### 5.3.3 RNA [i](#)

There are no RNA molecules in this entry.

### 5.4 Non-standard residues in protein, DNA, RNA chains [i](#)

There are no non-standard protein/DNA/RNA residues in this entry.

### 5.5 Carbohydrates [i](#)

There are no monosaccharides in this entry.

### 5.6 Ligand geometry [i](#)

4 ligands are modelled in this entry.

In the following table, the Counts columns list the number of bonds (or angles) for which Mogul statistics could be retrieved, the number of bonds (or angles) that are observed in the model and

the number of bonds (or angles) that are defined in the Chemical Component Dictionary. The Link column lists molecule types, if any, to which the group is linked. The Z score for a bond length (or angle) is the number of standard deviations the observed value is removed from the expected value. A bond length (or angle) with  $|Z| > 2$  is considered an outlier worth inspection. RMSZ is the root-mean-square of all Z scores of the bond lengths (or angles).

Mol	Type	Chain	Res	Link	Bond lengths			Bond angles		
					Counts	RMSZ	# Z  > 2	Counts	RMSZ	# Z  > 2
3	16Y	B	302	-	18,18,18	0.86	1 (5%)	18,18,18	0.98	1 (5%)
2	GOL	B	301	-	5,5,5	0.46	0	5,5,5	0.94	0
3	16Y	A	302	-	18,18,18	0.84	0	18,18,18	0.83	1 (5%)
2	GOL	A	301	-	5,5,5	0.62	0	5,5,5	1.77	1 (20%)

In the following table, the Chirals column lists the number of chiral outliers, the number of chiral centers analysed, the number of these observed in the model and the number defined in the Chemical Component Dictionary. Similar counts are reported in the Torsion and Rings columns. '-' means no outliers of that kind were identified.

Mol	Type	Chain	Res	Link	Chirals	Torsions	Rings
3	16Y	B	302	-	-	9/16/16/16	-
2	GOL	B	301	-	-	2/4/4/4	-
3	16Y	A	302	-	-	10/16/16/16	-
2	GOL	A	301	-	-	4/4/4/4	-

All (1) bond length outliers are listed below:

Mol	Chain	Res	Type	Atoms	Z	Observed(Å)	Ideal(Å)
3	B	302	16Y	O18-C17	-2.09	1.23	1.30

All (3) bond angle outliers are listed below:

Mol	Chain	Res	Type	Atoms	Z	Observed(°)	Ideal(°)
2	A	301	GOL	O2-C2-C3	2.87	121.05	109.18
3	A	302	16Y	C15-C16-C17	-2.28	108.56	114.51
3	B	302	16Y	C14-C15-C16	2.07	120.74	113.13

There are no chirality outliers.

All (25) torsion outliers are listed below:

Mol	Chain	Res	Type	Atoms
2	A	301	GOL	O1-C1-C2-C3
2	A	301	GOL	C1-C2-C3-O3

*Continued on next page...*

*Continued from previous page...*

Mol	Chain	Res	Type	Atoms
2	B	301	GOL	O2-C2-C3-O3
2	B	301	GOL	C1-C2-C3-O3
2	A	301	GOL	O2-C2-C3-O3
3	B	302	16Y	C2-C3-C4-C5
3	A	302	16Y	C2-C3-C4-C5
3	B	302	16Y	C10-C1-C2-C3
3	A	302	16Y	C1-C2-C3-C4
3	B	302	16Y	C10-C11-C12-C13
3	A	302	16Y	C1-C10-C11-C12
3	A	302	16Y	C10-C11-C12-C13
3	B	302	16Y	C13-C14-C15-C16
3	A	302	16Y	C13-C14-C15-C16
3	A	302	16Y	C3-C4-C5-C6
3	B	302	16Y	C2-C1-C10-C11
3	A	302	16Y	C11-C12-C13-C14
3	B	302	16Y	C11-C12-C13-C14
2	A	301	GOL	O1-C1-C2-O2
3	A	302	16Y	C4-C5-C6-C7
3	A	302	16Y	C15-C16-C17-O18
3	B	302	16Y	C15-C16-C17-O18
3	A	302	16Y	C15-C16-C17-O19
3	B	302	16Y	C15-C16-C17-O19
3	B	302	16Y	C3-C4-C5-C6

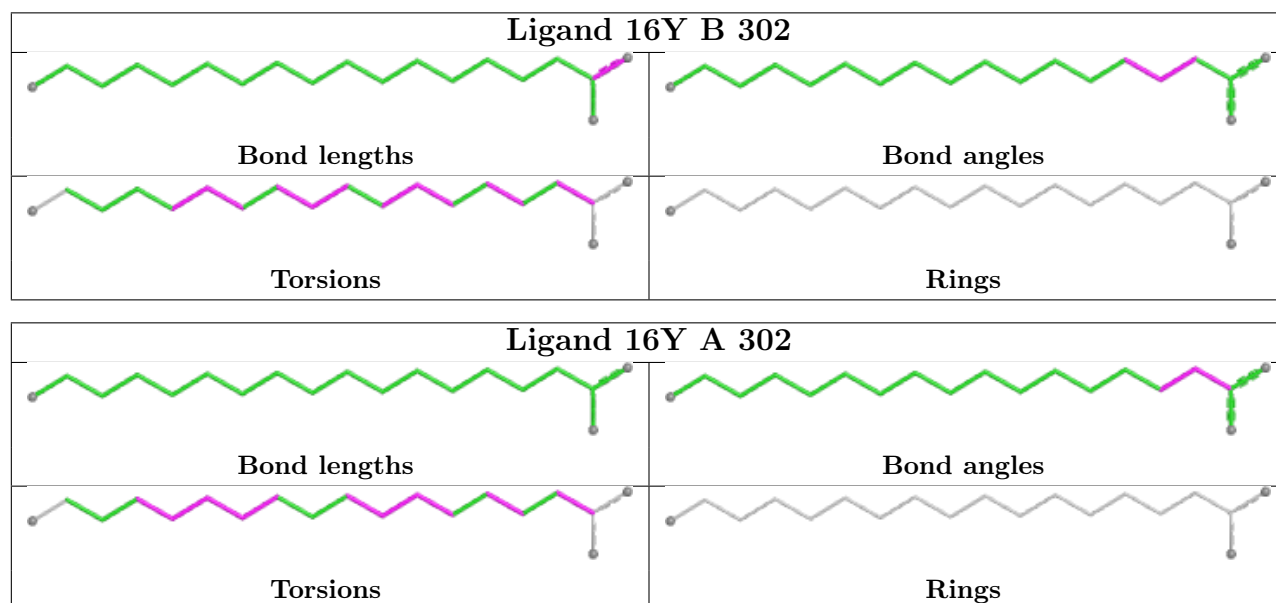
There are no ring outliers.

3 monomers are involved in 15 short contacts:

Mol	Chain	Res	Type	Clashes	Symm-Clashes
3	B	302	16Y	9	0
3	A	302	16Y	5	0
2	A	301	GOL	1	0

The following is a two-dimensional graphical depiction of Mogul quality analysis of bond lengths, bond angles, torsion angles, and ring geometry for all instances of the Ligand of Interest. In addition, ligands with molecular weight > 250 and outliers as shown on the validation Tables will also be included. For torsion angles, if less than 5% of the Mogul distribution of torsion angles is within 10 degrees of the torsion angle in question, then that torsion angle is considered an outlier. Any bond that is central to one or more torsion angles identified as an outlier by Mogul will be highlighted in the graph. For rings, the root-mean-square deviation (RMSD) between the ring in question and similar rings identified by Mogul is calculated over all ring torsion angles. If the average RMSD is greater than 60 degrees and the minimal RMSD between the ring in question and any Mogul-identified rings is also greater than 60 degrees, then that ring is considered an outlier.

The outliers are highlighted in purple. The color gray indicates Mogul did not find sufficient equivalents in the CSD to analyse the geometry.



## 5.7 Other polymers [i](#)

There are no such residues in this entry.

## 5.8 Polymer linkage issues [i](#)

There are no chain breaks in this entry.



## 6 Fit of model and data [i](#)

### 6.1 Protein, DNA and RNA chains [i](#)

In the following table, the column labelled '#RSRZ > 2' contains the number (and percentage) of RSRZ outliers, followed by percent RSRZ outliers for the chain as percentile scores relative to all X-ray entries and entries of similar resolution. The OWAB column contains the minimum, median, 95<sup>th</sup> percentile and maximum values of the occupancy-weighted average B-factor per residue. The column labelled 'Q < 0.9' lists the number of (and percentage) of residues with an average occupancy less than 0.9.

Mol	Chain	Analysed	<RSRZ>	#RSRZ>2	OWAB(Å <sup>2</sup> )	Q<0.9
1	A	269/269 (100%)	0.10	2 (0%) 87 87	17, 37, 59, 86	1 (0%)
1	B	269/269 (100%)	0.05	4 (1%) 73 71	18, 36, 59, 81	1 (0%)
All	All	538/538 (100%)	0.08	6 (1%) 80 79	17, 36, 59, 86	2 (0%)

All (6) RSRZ outliers are listed below:

Mol	Chain	Res	Type	RSRZ
1	B	25	ASN	3.3
1	A	26	ASN	3.1
1	B	103	ILE	2.4
1	B	27	ASP	2.2
1	B	118	ARG	2.1
1	A	161	GLY	2.1

### 6.2 Non-standard residues in protein, DNA, RNA chains [i](#)

There are no non-standard protein/DNA/RNA residues in this entry.

### 6.3 Carbohydrates [i](#)

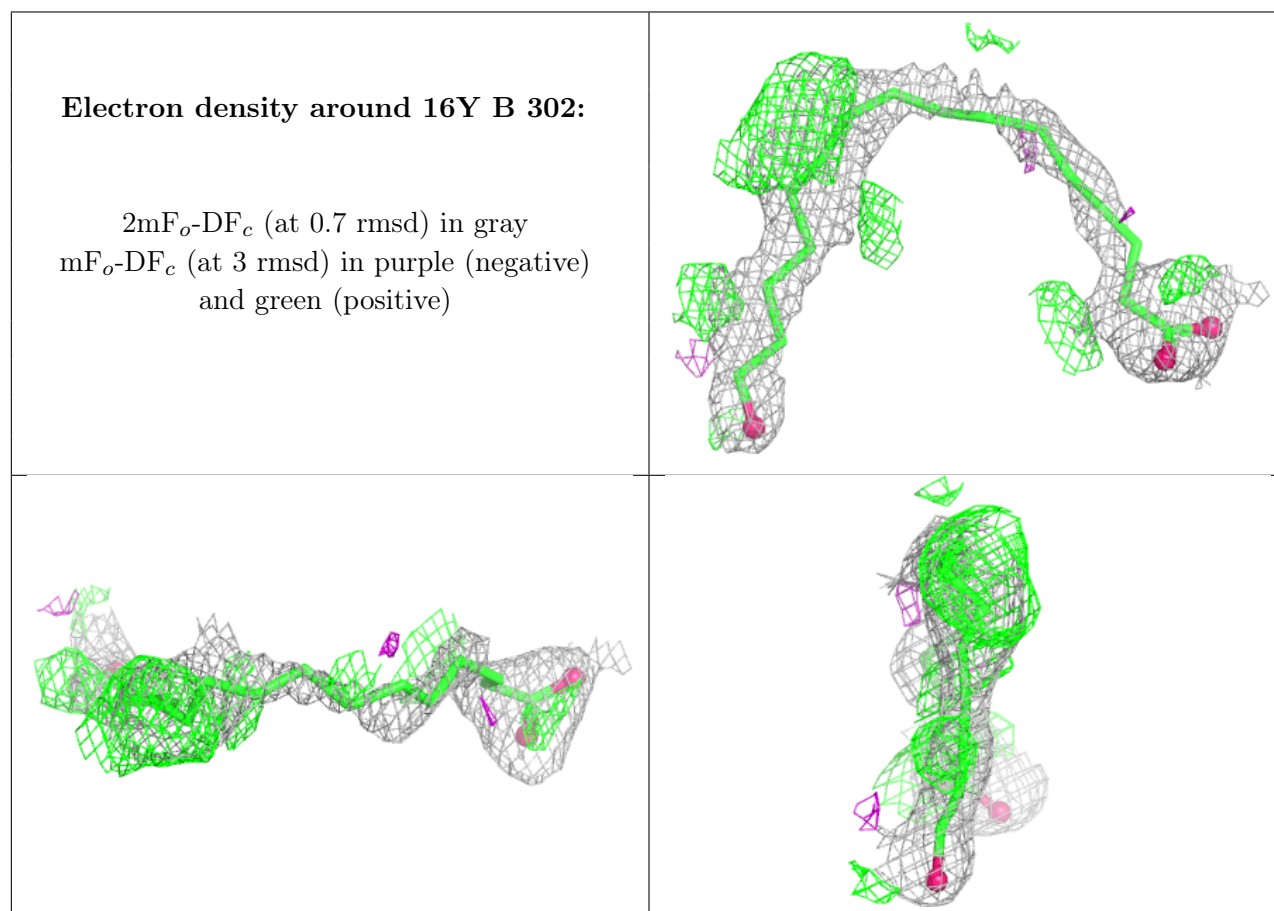
There are no monosaccharides in this entry.

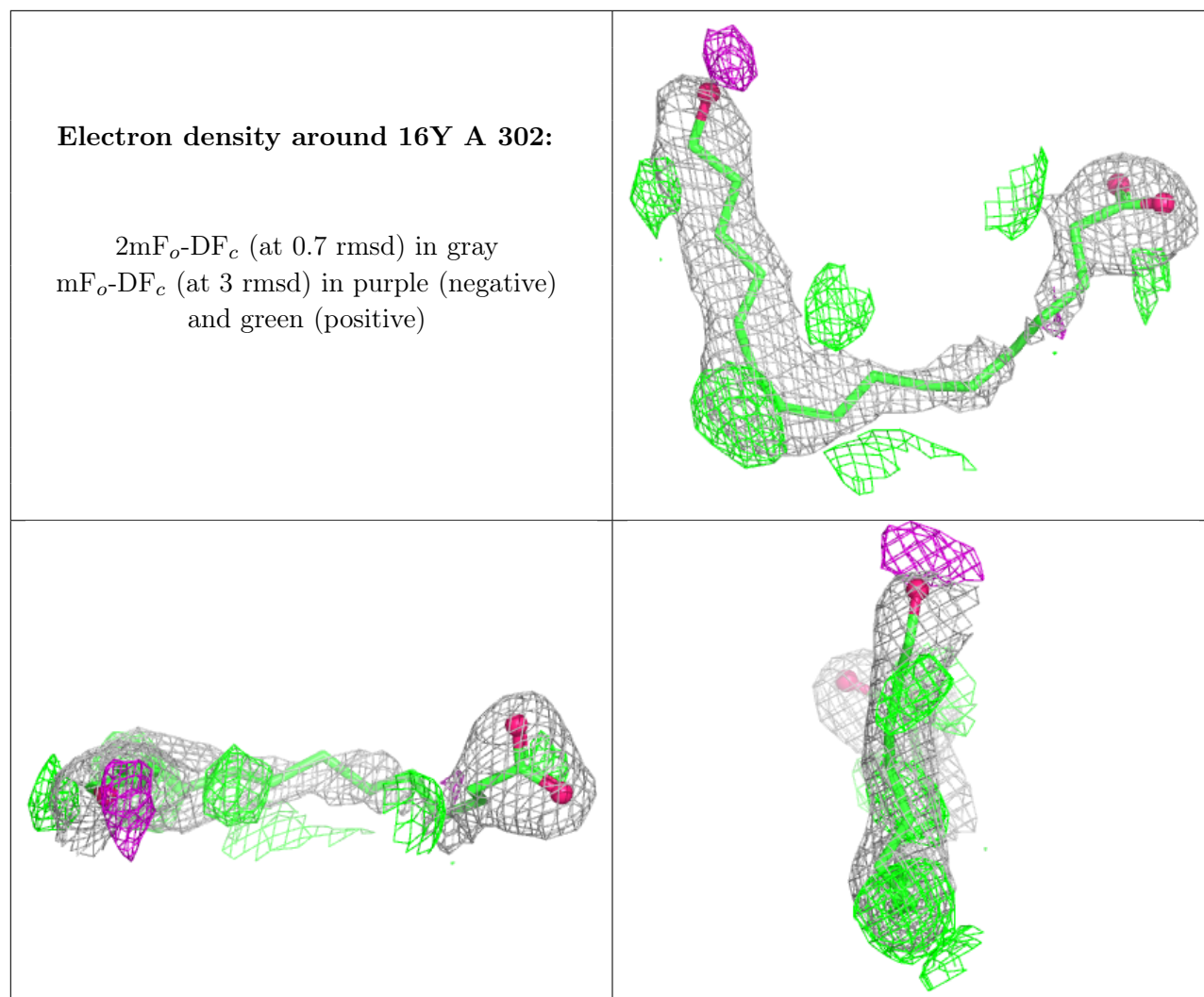
### 6.4 Ligands [i](#)

In the following table, the Atoms column lists the number of modelled atoms in the group and the number defined in the chemical component dictionary. The B-factors column lists the minimum, median, 95<sup>th</sup> percentile and maximum values of B factors of atoms in the group. The column labelled 'Q < 0.9' lists the number of atoms with occupancy less than 0.9.

Mol	Type	Chain	Res	Atoms	RSCC	RSR	B-factors( $\text{\AA}^2$ )	Q<0.9
3	16Y	B	302	19/19	0.77	0.35	56,65,74,75	0
2	GOL	A	301	6/6	0.78	0.21	46,58,60,60	0
3	16Y	A	302	19/19	0.83	0.31	41,52,65,65	0
2	GOL	B	301	6/6	0.90	0.19	53,60,61,67	0

The following is a graphical depiction of the model fit to experimental electron density of all instances of the Ligand of Interest. In addition, ligands with molecular weight > 250 and outliers as shown on the geometry validation Tables will also be included. Each fit is shown from different orientation to approximate a three-dimensional view.





## 6.5 Other polymers [i](#)

There are no such residues in this entry.