



Full wwPDB X-ray Structure Validation Report ⓘ

Nov 27, 2023 – 08:05 PM EST

PDB ID : 8GIC
Title : A1 Tei + Hpg: Adenylation domain 1 core construct from teicoplanin biosynthesis; 4-hydroxyphenylglycine bound
Authors : Hansen, M.H.; Cryle, M.J.
Deposited on : 2023-03-14
Resolution : 1.64 Å(reported)

This is a Full wwPDB X-ray Structure Validation Report for a publicly released PDB entry.

We welcome your comments at validation@mail.wwpdb.org

A user guide is available at

<https://www.wwpdb.org/validation/2017/XrayValidationReportHelp>

with specific help available everywhere you see the ⓘ symbol.

The types of validation reports are described at

<http://www.wwpdb.org/validation/2017/FAQs#types>.

The following versions of software and data (see [references ⓘ](#)) were used in the production of this report:

MolProbity : 4.02b-467
Mogul : 1.8.5 (274361), CSD as541be (2020)
Xtrriage (Phenix) : 1.13
EDS : 2.36
buster-report : 1.1.7 (2018)
Percentile statistics : 20191225.v01 (using entries in the PDB archive December 25th 2019)
Refmac : 5.8.0158
CCP4 : 7.0.044 (Gargrove)
Ideal geometry (proteins) : Engh & Huber (2001)
Ideal geometry (DNA, RNA) : Parkinson et al. (1996)
Validation Pipeline (wwPDB-VP) : 2.36

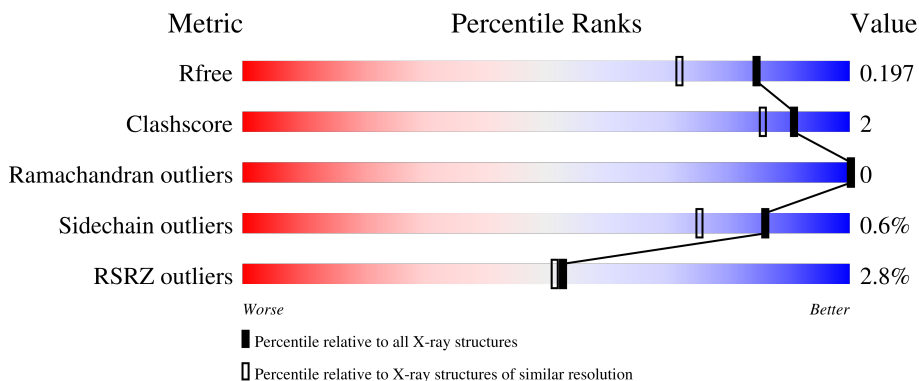
1 Overall quality at a glance

The following experimental techniques were used to determine the structure:

X-RAY DIFFRACTION

The reported resolution of this entry is 1.64 Å.

Percentile scores (ranging between 0-100) for global validation metrics of the entry are shown in the following graphic. The table shows the number of entries on which the scores are based.



Metric	Whole archive (#Entries)	Similar resolution (#Entries, resolution range(Å))
R_{free}	130704	3122 (1.66-1.62)
Clashscore	141614	3268 (1.66-1.62)
Ramachandran outliers	138981	3215 (1.66-1.62)
Sidechain outliers	138945	3215 (1.66-1.62)
RSRZ outliers	127900	3079 (1.66-1.62)

The table below summarises the geometric issues observed across the polymeric chains and their fit to the electron density. The red, orange, yellow and green segments of the lower bar indicate the fraction of residues that contain outliers for ≥ 3 , 2, 1 and 0 types of geometric quality criteria respectively. A grey segment represents the fraction of residues that are not modelled. The numeric value for each fraction is indicated below the corresponding segment, with a dot representing fractions $\leq 5\%$. The upper red bar (where present) indicates the fraction of residues that have poor fit to the electron density. The numeric value is given above the bar.

Mol	Chain	Length	Quality of chain
1	A	399	 3% 95%
1	B	399	 3% 93%
2	C	69	 4% 96%
2	D	69	 86% 13%

2 Entry composition [i](#)

There are 5 unique types of molecules in this entry. The entry contains 14707 atoms, of which 6951 are hydrogens and 0 are deuteriums.

In the tables below, the ZeroOcc column contains the number of atoms modelled with zero occupancy, the AltConf column contains the number of residues with at least one atom in alternate conformation and the Trace column contains the number of residues modelled with at most 2 atoms.

- Molecule 1 is a protein called Non-ribosomal peptide synthetase.

Mol	Chain	Residues	Atoms						ZeroOcc	AltConf	Trace
			Total	C	H	N	O	S			
1	A	392	Total	C	H	N	O	S	0	15	0
			5954	1858	2986	555	546	9			
1	B	387	Total	C	H	N	O	S	0	14	0
			5898	1838	2969	548	535	8			

There are 18 discrepancies between the modelled and reference sequences:

Chain	Residue	Modelled	Actual	Comment	Reference
A	8	MET	-	initiating methionine	UNP Q70AZ9
A	399	GLY	-	expression tag	UNP Q70AZ9
A	400	SER	-	expression tag	UNP Q70AZ9
A	401	HIS	-	expression tag	UNP Q70AZ9
A	402	HIS	-	expression tag	UNP Q70AZ9
A	403	HIS	-	expression tag	UNP Q70AZ9
A	404	HIS	-	expression tag	UNP Q70AZ9
A	405	HIS	-	expression tag	UNP Q70AZ9
A	406	HIS	-	expression tag	UNP Q70AZ9
B	8	MET	-	initiating methionine	UNP Q70AZ9
B	399	GLY	-	expression tag	UNP Q70AZ9
B	400	SER	-	expression tag	UNP Q70AZ9
B	401	HIS	-	expression tag	UNP Q70AZ9
B	402	HIS	-	expression tag	UNP Q70AZ9
B	403	HIS	-	expression tag	UNP Q70AZ9
B	404	HIS	-	expression tag	UNP Q70AZ9
B	405	HIS	-	expression tag	UNP Q70AZ9
B	406	HIS	-	expression tag	UNP Q70AZ9

- Molecule 2 is a protein called MbtH-like short polypeptide.

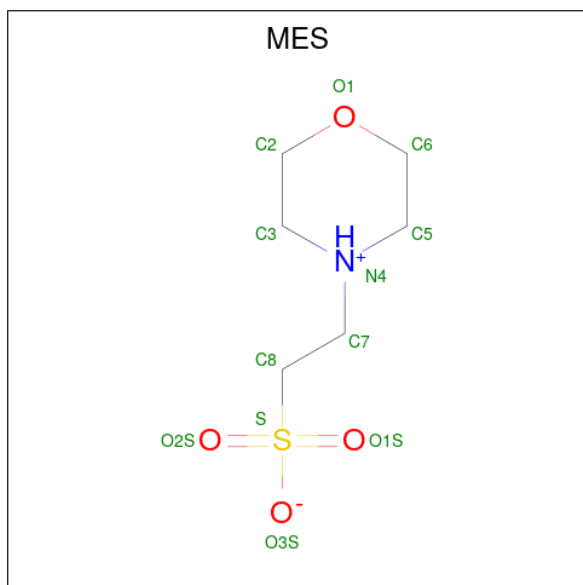
Mol	Chain	Residues	Atoms						ZeroOcc	AltConf	Trace
			Total	C	H	N	O	S			
2	C	68	Total	C	H	N	O	S	0	5	0
			1059	347	509	92	110	1			

Continued on next page...

Continued from previous page...

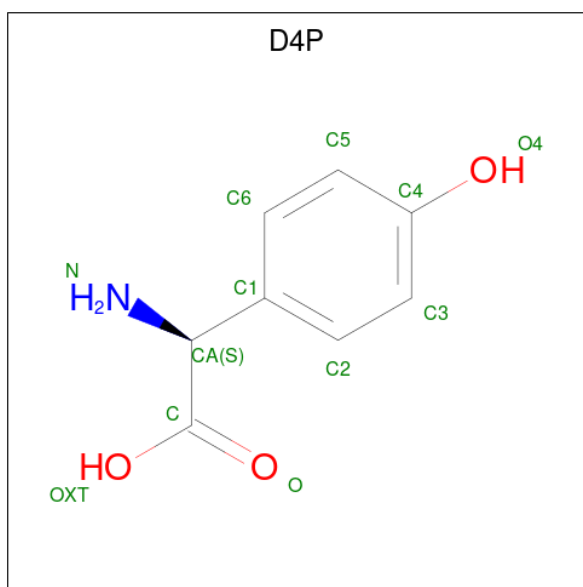
Mol	Chain	Residues	Atoms					ZeroOcc	AltConf	Trace	
			Total	C	H	N	O				S
2	D	60	912	302	434	82	93	1	0	2	0

- Molecule 3 is 2-(N-MORPHOLINO)-ETHANESULFONIC ACID (three-letter code: MES) (formula: C₆H₁₃NO₄S).



Mol	Chain	Residues	Atoms					ZeroOcc	AltConf	
			Total	C	H	N	O			S
3	A	1	25	6	13	1	4	1	0	0
3	A	1	25	6	13	1	4	1	0	0

- Molecule 4 is (2S)-AMINO(4-HYDROXYPHENYL)ACETIC ACID (three-letter code: D4P) (formula: C₈H₉NO₃) (labeled as "Ligand of Interest" by depositor).



Mol	Chain	Residues	Atoms				ZeroOcc	AltConf	
4	A	1	Total	C	H	N	O	0	0
			21	8	9	1	3		
4	A	1	Total	C	H	N	O	0	0
			21	8	9	1	3		
4	B	1	Total	C	H	N	O	0	0
			21	8	9	1	3		

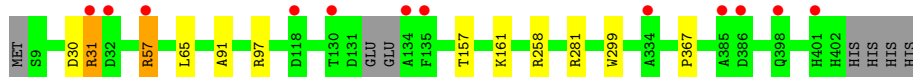
- Molecule 5 is water.

Mol	Chain	Residues	Atoms		ZeroOcc	AltConf
5	A	326	Total	O	0	0
			326	326		
5	B	342	Total	O	0	0
			342	342		
5	C	47	Total	O	0	0
			47	47		
5	D	56	Total	O	0	0
			56	56		

3 Residue-property plots [i](#)

These plots are drawn for all protein, RNA, DNA and oligosaccharide chains in the entry. The first graphic for a chain summarises the proportions of the various outlier classes displayed in the second graphic. The second graphic shows the sequence view annotated by issues in geometry and electron density. Residues are color-coded according to the number of geometric quality criteria for which they contain at least one outlier: green = 0, yellow = 1, orange = 2 and red = 3 or more. A red dot above a residue indicates a poor fit to the electron density ($RSRZ > 2$). Stretches of 2 or more consecutive residues without any outlier are shown as a green connector. Residues present in the sample, but not in the model, are shown in grey.

- Molecule 1: Non-ribosomal peptide synthetase



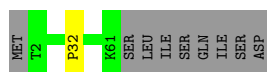
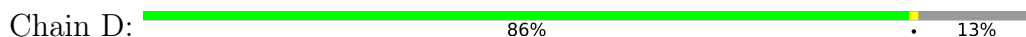
- Molecule 1: Non-ribosomal peptide synthetase



- Molecule 2: MbtH-like short polypeptide



- Molecule 2: MbtH-like short polypeptide



4 Data and refinement statistics

Property	Value	Source
Space group	P 2 21 21	Depositor
Cell constants a, b, c, α , β , γ	42.22Å 123.79Å 176.59Å 90.00° 90.00° 90.00°	Depositor
Resolution (Å)	44.15 – 1.64 44.15 – 1.64	Depositor EDS
% Data completeness (in resolution range)	99.7 (44.15-1.64) 99.7 (44.15-1.64)	Depositor EDS
R_{merge}	0.02	Depositor
R_{sym}	(Not available)	Depositor
$\langle I/\sigma(I) \rangle$ ¹	1.10 (at 1.63Å)	Xtrriage
Refinement program	PHENIX 1.20.1_4487	Depositor
R, R_{free}	0.166 , 0.197 0.164 , 0.197	Depositor DCC
R_{free} test set	5838 reflections (5.08%)	wwPDB-VP
Wilson B-factor (Å ²)	21.3	Xtrriage
Anisotropy	0.469	Xtrriage
Bulk solvent k_{sol} (e/Å ³), B_{sol} (Å ²)	0.41 , 44.7	EDS
L-test for twinning ²	$\langle L \rangle = 0.49$, $\langle L^2 \rangle = 0.32$	Xtrriage
Estimated twinning fraction	No twinning to report.	Xtrriage
F_o, F_c correlation	0.97	EDS
Total number of atoms	14707	wwPDB-VP
Average B, all atoms (Å ²)	29.0	wwPDB-VP

Xtrriage's analysis on translational NCS is as follows: *The largest off-origin peak in the Patterson function is 13.45% of the height of the origin peak. No significant pseudotranslation is detected.*

¹Intensities estimated from amplitudes.

²Theoretical values of $\langle |L| \rangle$, $\langle L^2 \rangle$ for acentric reflections are 0.5, 0.333 respectively for untwinned datasets, and 0.375, 0.2 for perfectly twinned datasets.

5 Model quality

5.1 Standard geometry

Bond lengths and bond angles in the following residue types are not validated in this section: MES, D4P

The Z score for a bond length (or angle) is the number of standard deviations the observed value is removed from the expected value. A bond length (or angle) with $|Z| > 5$ is considered an outlier worth inspection. RMSZ is the root-mean-square of all Z scores of the bond lengths (or angles).

Mol	Chain	Bond lengths		Bond angles	
		RMSZ	# Z >5	RMSZ	# Z >5
1	A	0.36	0/3080	0.69	0/4198
1	B	0.37	0/3043	0.71	0/4148
2	C	0.34	0/588	0.56	0/805
2	D	0.37	0/502	0.58	0/688
All	All	0.36	0/7213	0.68	0/9839

Chiral center outliers are detected by calculating the chiral volume of a chiral center and verifying if the center is modelled as a planar moiety or with the opposite hand. A planarity outlier is detected by checking planarity of atoms in a peptide group, atoms in a mainchain group or atoms of a sidechain that are expected to be planar.

Mol	Chain	#Chirality outliers	#Planarity outliers
1	B	0	1

There are no bond length outliers.

There are no bond angle outliers.

There are no chirality outliers.

All (1) planarity outliers are listed below:

Mol	Chain	Res	Type	Group
1	B	321	ARG	Sidechain

5.2 Too-close contacts

In the following table, the Non-H and H(model) columns list the number of non-hydrogen atoms and hydrogen atoms in the chain respectively. The H(added) column lists the number of hydrogen atoms added and optimized by MolProbity. The Clashes column lists the number of clashes within the asymmetric unit, whereas Symm-Clashes lists symmetry-related clashes.

Mol	Chain	Non-H	H(model)	H(added)	Clashes	Symm-Clashes
1	A	2968	2986	2928	12	0
1	B	2929	2969	2912	9	0
2	C	550	509	487	2	0
2	D	478	434	425	1	0
3	A	24	26	25	1	0
4	A	24	18	16	1	0
4	B	12	9	8	1	0
5	A	326	0	0	6	2
5	B	342	0	0	4	2
5	C	47	0	0	0	1
5	D	56	0	0	0	0
All	All	7756	6951	6801	23	3

The all-atom clashscore is defined as the number of clashes found per 1000 atoms (including hydrogen atoms). The all-atom clashscore for this structure is 2.

All (23) close contacts within the same asymmetric unit are listed below, sorted by their clash magnitude.

Atom-1	Atom-2	Interatomic distance (Å)	Clash overlap (Å)
1:B:331:ARG:NH1	5:B:601:HOH:O	1.98	0.96
1:A:258[B]:ARG:NH1	5:A:601:HOH:O	2.08	0.86
1:A:97:ARG:NH2	5:A:602:HOH:O	2.23	0.72
3:A:501:MES:H32	5:A:653:HOH:O	1.99	0.62
2:C:58[B]:LEU:O	2:C:58[B]:LEU:HD13	2.00	0.60
1:A:97:ARG:CZ	5:A:602:HOH:O	2.53	0.56
4:B:501:D4P:H6	5:B:817:HOH:O	2.09	0.52
1:B:24:ASP:OD2	5:B:602:HOH:O	2.19	0.52
1:A:367:PRO:HA	2:D:32:PRO:HB3	1.94	0.49
1:B:367:PRO:HA	2:C:32:PRO:HB3	1.95	0.49
1:B:122:GLU:OE2	5:B:603:HOH:O	2.20	0.48
1:A:161:LYS:HE3	5:A:851:HOH:O	2.14	0.48
1:A:30:ASP:CG	1:A:31:ARG:HE	2.17	0.47
1:A:30:ASP:C	1:A:31:ARG:HG3	2.35	0.47
1:A:157:THR:HG23	4:A:504:D4P:OXT	2.15	0.47
1:B:379:ASP:OD1	1:B:394:ARG:HD2	2.15	0.46
1:B:109:ARG:NH1	1:B:125:GLU:OE1	2.42	0.43
1:A:57:ARG:HB2	1:A:57:ARG:CZ	2.48	0.43
1:B:186:ALA:HB2	1:B:211[A]:ARG:CZ	2.50	0.42
1:A:281[B]:ARG:NH2	1:B:181:VAL:O	2.50	0.42
1:A:65:LEU:HD11	1:A:91:ALA:HA	2.02	0.42
1:A:258[B]:ARG:CZ	5:A:601:HOH:O	2.61	0.41
1:B:282[A]:VAL:O	1:B:282[A]:VAL:HG23	2.21	0.40

All (3) symmetry-related close contacts are listed below. The label for Atom-2 includes the symmetry operator and encoded unit-cell translations to be applied.

Atom-1	Atom-2	Interatomic distance (Å)	Clash overlap (Å)
5:A:635:HOH:O	5:A:695:HOH:O[1_655]	2.07	0.13
5:A:862:HOH:O	5:B:721:HOH:O[3_555]	2.08	0.12
5:B:941:HOH:O	5:C:147:HOH:O[1_455]	2.19	0.01

5.3 Torsion angles [i](#)

5.3.1 Protein backbone [i](#)

In the following table, the Percentiles column shows the percent Ramachandran outliers of the chain as a percentile score with respect to all X-ray entries followed by that with respect to entries of similar resolution.

The Analysed column shows the number of residues for which the backbone conformation was analysed, and the total number of residues.

Mol	Chain	Analysed	Favoured	Allowed	Outliers	Percentiles	
1	A	403/399 (101%)	395 (98%)	8 (2%)	0	100	100
1	B	399/399 (100%)	391 (98%)	8 (2%)	0	100	100
2	C	71/69 (103%)	71 (100%)	0	0	100	100
2	D	60/69 (87%)	60 (100%)	0	0	100	100
All	All	933/936 (100%)	917 (98%)	16 (2%)	0	100	100

There are no Ramachandran outliers to report.

5.3.2 Protein sidechains [i](#)

In the following table, the Percentiles column shows the percent sidechain outliers of the chain as a percentile score with respect to all X-ray entries followed by that with respect to entries of similar resolution.

The Analysed column shows the number of residues for which the sidechain conformation was analysed, and the total number of residues.

Mol	Chain	Analysed	Rotameric	Outliers	Percentiles	
1	A	301/295 (102%)	298 (99%)	3 (1%)	76	59
1	B	297/295 (101%)	296 (100%)	1 (0%)	92	87
2	C	63/59 (107%)	63 (100%)	0	100	100

Continued on next page...

Continued from previous page...

Mol	Chain	Analysed	Rotameric	Outliers	Percentiles	
2	D	52/59 (88%)	52 (100%)	0	100	100
All	All	713/708 (101%)	709 (99%)	4 (1%)	86	75

All (4) residues with a non-rotameric sidechain are listed below:

Mol	Chain	Res	Type
1	A	31	ARG
1	A	57	ARG
1	A	299	TRP
1	B	299	TRP

Sometimes sidechains can be flipped to improve hydrogen bonding and reduce clashes. There are no such sidechains identified.

5.3.3 RNA [i](#)

There are no RNA molecules in this entry.

5.4 Non-standard residues in protein, DNA, RNA chains [i](#)

There are no non-standard protein/DNA/RNA residues in this entry.

5.5 Carbohydrates [i](#)

There are no monosaccharides in this entry.

5.6 Ligand geometry [i](#)

5 ligands are modelled in this entry.

In the following table, the Counts columns list the number of bonds (or angles) for which Mogul statistics could be retrieved, the number of bonds (or angles) that are observed in the model and the number of bonds (or angles) that are defined in the Chemical Component Dictionary. The Link column lists molecule types, if any, to which the group is linked. The Z score for a bond length (or angle) is the number of standard deviations the observed value is removed from the expected value. A bond length (or angle) with $|Z| > 2$ is considered an outlier worth inspection. RMSZ is the root-mean-square of all Z scores of the bond lengths (or angles).

Mol	Type	Chain	Res	Link	Bond lengths			Bond angles		
					Counts	RMSZ	# Z > 2	Counts	RMSZ	# Z > 2
4	D4P	A	504	-	11,12,12	2.05	5 (45%)	10,16,16	0.87	0
4	D4P	B	501	-	11,12,12	1.36	2 (18%)	10,16,16	1.60	2 (20%)
3	MES	A	502	-	12,12,12	1.90	1 (8%)	14,16,16	1.71	4 (28%)
3	MES	A	501	-	12,12,12	2.04	1 (8%)	14,16,16	1.80	5 (35%)
4	D4P	A	503	-	11,12,12	1.51	2 (18%)	10,16,16	1.37	2 (20%)

In the following table, the Chirals column lists the number of chiral outliers, the number of chiral centers analysed, the number of these observed in the model and the number defined in the Chemical Component Dictionary. Similar counts are reported in the Torsion and Rings columns. '-' means no outliers of that kind were identified.

Mol	Type	Chain	Res	Link	Chirals	Torsions	Rings
4	D4P	A	504	-	-	0/8/8/8	0/1/1/1
4	D4P	B	501	-	-	4/8/8/8	0/1/1/1
3	MES	A	502	-	-	0/6/14/14	0/1/1/1
3	MES	A	501	-	-	1/6/14/14	0/1/1/1
4	D4P	A	503	-	-	4/8/8/8	0/1/1/1

All (11) bond length outliers are listed below:

Mol	Chain	Res	Type	Atoms	Z	Observed(Å)	Ideal(Å)
3	A	501	MES	C8-S	-6.73	1.67	1.77
3	A	502	MES	C8-S	-6.17	1.68	1.77
4	A	504	D4P	O4-C4	3.17	1.44	1.37
4	A	504	D4P	C1-CA	3.00	1.56	1.52
4	A	503	D4P	C1-CA	2.42	1.55	1.52
4	A	503	D4P	O4-C4	2.33	1.42	1.37
4	A	504	D4P	O-C	2.18	1.28	1.22
4	A	504	D4P	C5-C4	2.14	1.43	1.38
4	A	504	D4P	C3-C2	2.08	1.42	1.38
4	B	501	D4P	O4-C4	2.07	1.41	1.37
4	B	501	D4P	C1-CA	2.02	1.54	1.52

All (13) bond angle outliers are listed below:

Mol	Chain	Res	Type	Atoms	Z	Observed(°)	Ideal(°)
3	A	502	MES	O2S-S-C8	3.73	111.40	106.92
3	A	501	MES	O3S-S-C8	3.13	110.82	105.77
3	A	501	MES	O1S-S-C8	2.89	110.39	106.92
3	A	501	MES	C7-N4-C3	2.88	118.59	111.23

Continued on next page...

Continued from previous page...

Mol	Chain	Res	Type	Atoms	Z	Observed(°)	Ideal(°)
4	B	501	D4P	C6-C1-C2	2.77	121.75	118.29
3	A	502	MES	C5-N4-C3	2.74	115.00	108.83
3	A	501	MES	C5-N4-C3	2.72	114.96	108.83
4	A	503	D4P	C6-C1-C2	2.28	121.14	118.29
4	A	503	D4P	C3-C2-C1	-2.21	118.97	121.20
4	B	501	D4P	C3-C2-C1	-2.12	119.06	121.20
3	A	502	MES	O3S-S-C8	2.08	109.13	105.77
3	A	502	MES	O1S-S-C8	2.07	109.41	106.92
3	A	501	MES	C2-C3-N4	-2.05	107.00	110.10

There are no chirality outliers.

All (9) torsion outliers are listed below:

Mol	Chain	Res	Type	Atoms
3	A	501	MES	C8-C7-N4-C3
4	B	501	D4P	OXT-C-CA-N
4	B	501	D4P	O-C-CA-C1
4	B	501	D4P	OXT-C-CA-C1
4	A	503	D4P	O-C-CA-N
4	A	503	D4P	O-C-CA-C1
4	A	503	D4P	OXT-C-CA-C1
4	A	503	D4P	OXT-C-CA-N
4	B	501	D4P	O-C-CA-N

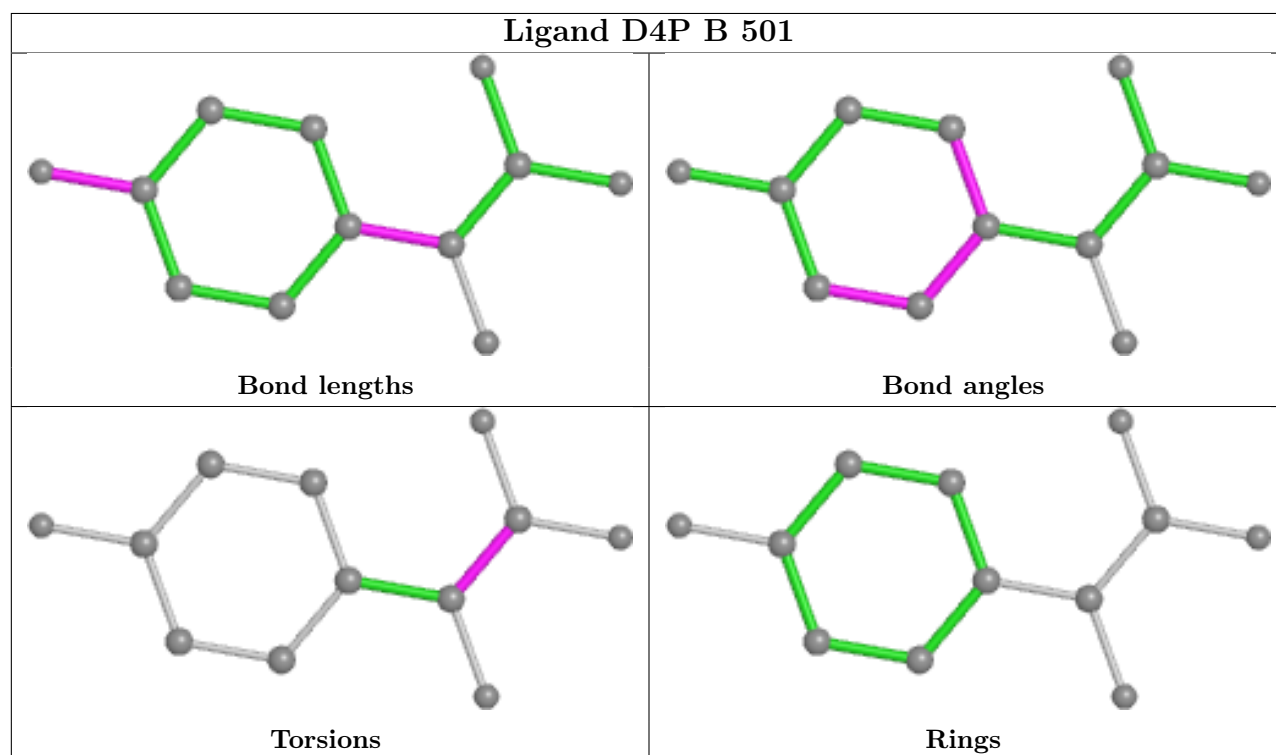
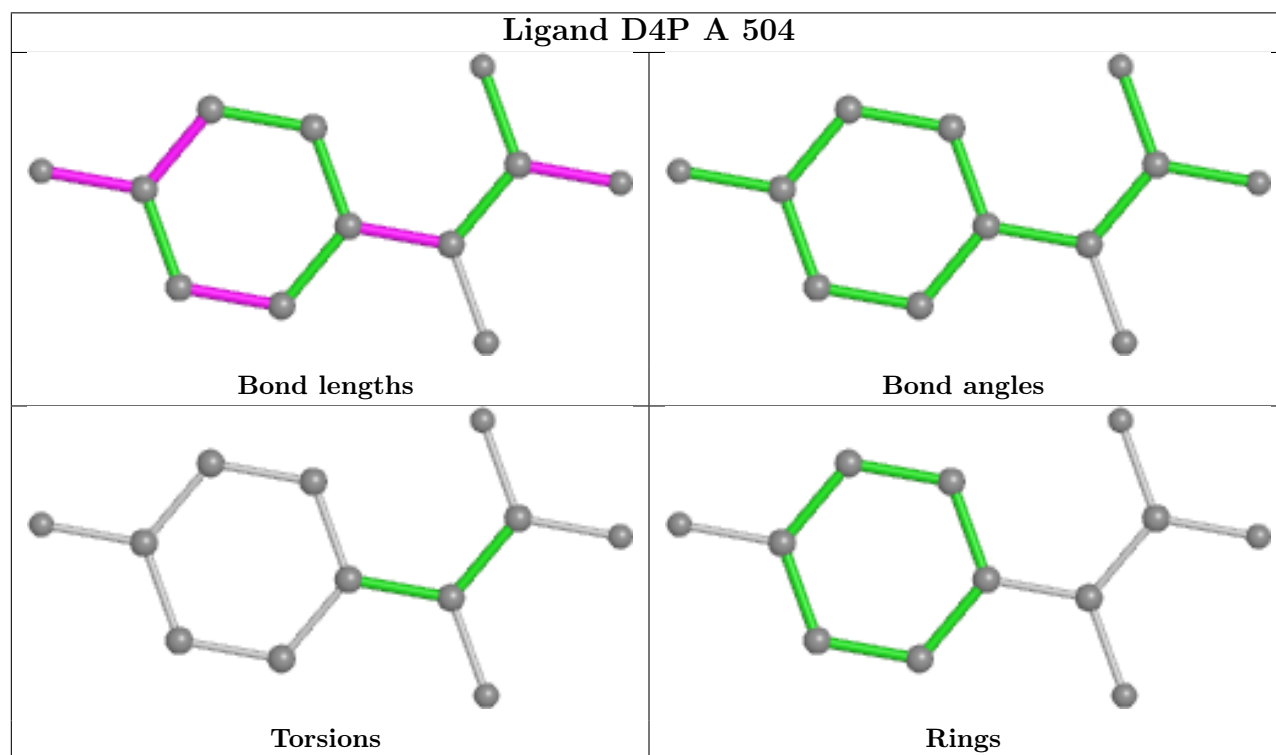
There are no ring outliers.

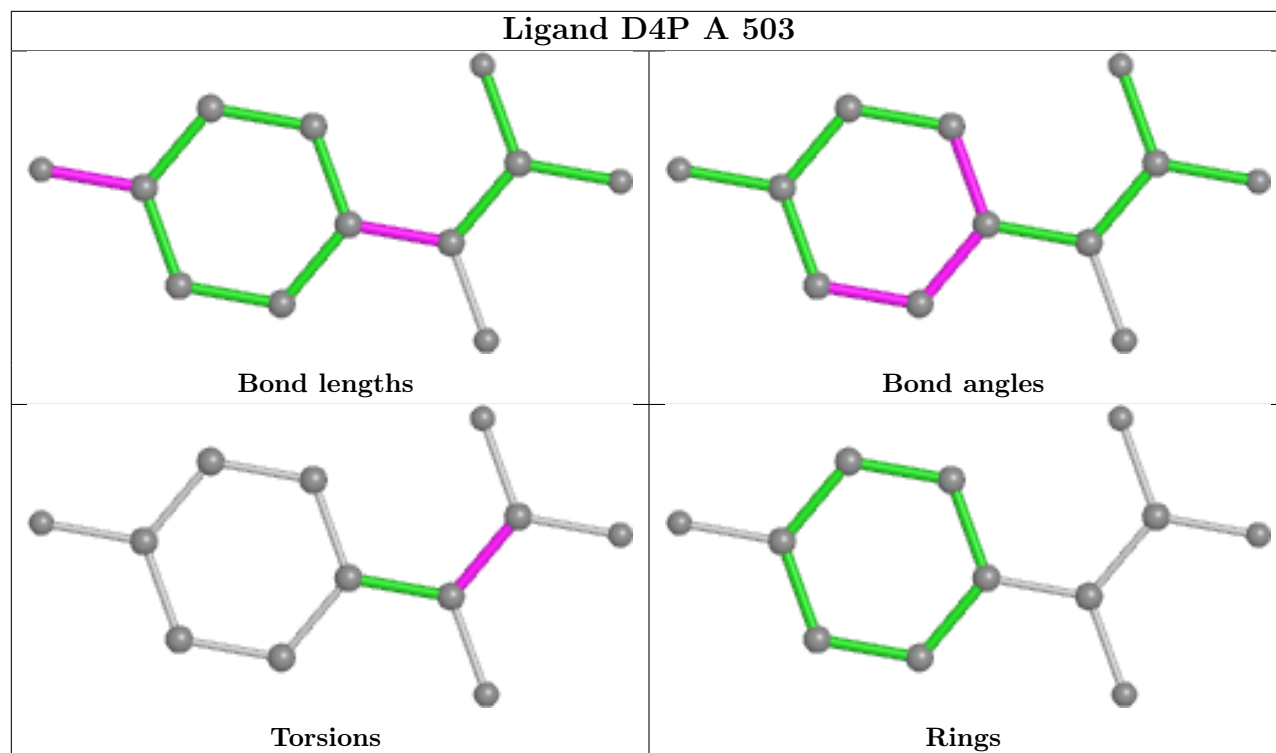
3 monomers are involved in 3 short contacts:

Mol	Chain	Res	Type	Clashes	Symm-Clashes
4	A	504	D4P	1	0
4	B	501	D4P	1	0
3	A	501	MES	1	0

The following is a two-dimensional graphical depiction of Mogul quality analysis of bond lengths, bond angles, torsion angles, and ring geometry for all instances of the Ligand of Interest. In addition, ligands with molecular weight > 250 and outliers as shown on the validation Tables will also be included. For torsion angles, if less than 5% of the Mogul distribution of torsion angles is within 10 degrees of the torsion angle in question, then that torsion angle is considered an outlier. Any bond that is central to one or more torsion angles identified as an outlier by Mogul will be highlighted in the graph. For rings, the root-mean-square deviation (RMSD) between the ring in question and similar rings identified by Mogul is calculated over all ring torsion angles. If the average RMSD is greater than 60 degrees and the minimal RMSD between the ring in question and any Mogul-identified rings is also greater than 60 degrees, then that ring is considered an outlier.

The outliers are highlighted in purple. The color gray indicates Mogul did not find sufficient equivalents in the CSD to analyse the geometry.





5.7 Other polymers [i](#)

There are no such residues in this entry.

5.8 Polymer linkage issues [i](#)

There are no chain breaks in this entry.

6 Fit of model and data

6.1 Protein, DNA and RNA chains

In the following table, the column labelled ‘#RSRZ> 2’ contains the number (and percentage) of RSRZ outliers, followed by percent RSRZ outliers for the chain as percentile scores relative to all X-ray entries and entries of similar resolution. The OWAB column contains the minimum, median, 95th percentile and maximum values of the occupancy-weighted average B-factor per residue. The column labelled ‘Q< 0.9’ lists the number of (and percentage) of residues with an average occupancy less than 0.9.

Mol	Chain	Analysed	<RSRZ>	#RSRZ>2	OWAB(Å ²)	Q<0.9
1	A	392/399 (98%)	-0.11	12 (3%) 49 47	14, 23, 43, 80	0
1	B	387/399 (96%)	-0.22	10 (2%) 56 55	14, 22, 38, 71	0
2	C	68/69 (98%)	-0.03	3 (4%) 34 32	19, 29, 51, 71	0
2	D	60/69 (86%)	-0.50	0 100 100	16, 24, 40, 69	0
All	All	907/936 (96%)	-0.18	25 (2%) 53 51	14, 23, 44, 80	0

All (25) RSRZ outliers are listed below:

Mol	Chain	Res	Type	RSRZ
1	A	134	ALA	8.7
1	A	135	PHE	7.7
1	A	385	ALA	5.1
1	B	386	ASP	4.5
2	C	67	ILE	3.7
1	A	386	ASP	3.7
1	B	32	ASP	3.3
1	A	334	ALA	3.1
1	A	32	ASP	2.9
1	B	157	THR	2.8
1	A	31	ARG	2.8
1	B	31	ARG	2.7
1	B	334	ALA	2.7
1	A	401	HIS	2.7
1	B	331	ARG	2.6
1	A	118	ASP	2.4
1	B	385	ALA	2.3
1	B	384	THR	2.3
1	B	266	VAL	2.2
1	A	57	ARG	2.2
2	C	66	GLN	2.2

Continued on next page...

Continued from previous page...

Mol	Chain	Res	Type	RSRZ
2	C	2	THR	2.1
1	A	398	GLN	2.0
1	B	335	PRO	2.0
1	A	130	THR	2.0

6.2 Non-standard residues in protein, DNA, RNA chains [i](#)

There are no non-standard protein/DNA/RNA residues in this entry.

6.3 Carbohydrates [i](#)

There are no monosaccharides in this entry.

6.4 Ligands [i](#)

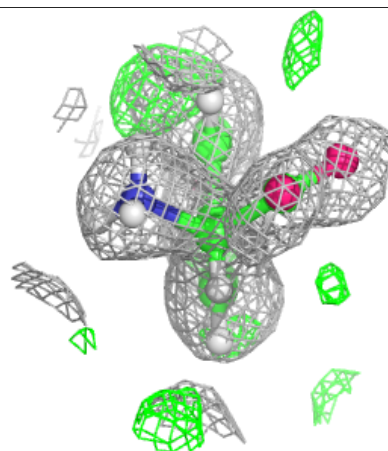
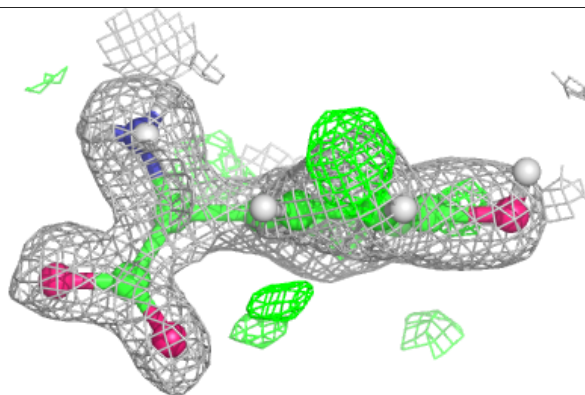
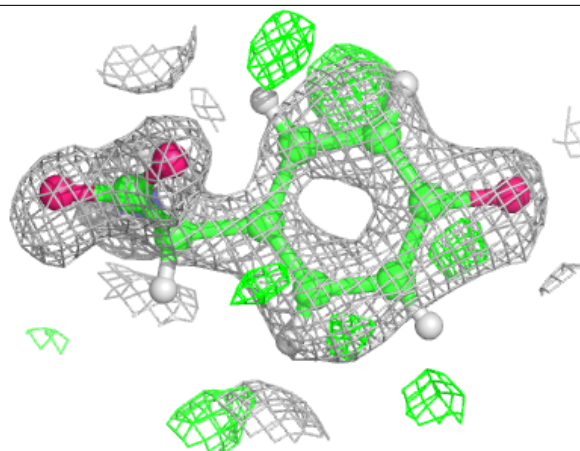
In the following table, the Atoms column lists the number of modelled atoms in the group and the number defined in the chemical component dictionary. The B-factors column lists the minimum, median, 95th percentile and maximum values of B factors of atoms in the group. The column labelled 'Q< 0.9' lists the number of atoms with occupancy less than 0.9.

Mol	Type	Chain	Res	Atoms	RSCC	RSR	B-factors(Å ²)	Q<0.9
3	MES	A	502	12/12	0.74	0.19	29,45,58,100	25
4	D4P	B	501	12/12	0.79	0.19	19,28,38,42	21
3	MES	A	501	12/12	0.88	0.15	36,47,55,78	0
4	D4P	A	503	12/12	0.89	0.13	20,27,37,42	21
4	D4P	A	504	12/12	0.90	0.10	21,29,43,44	21

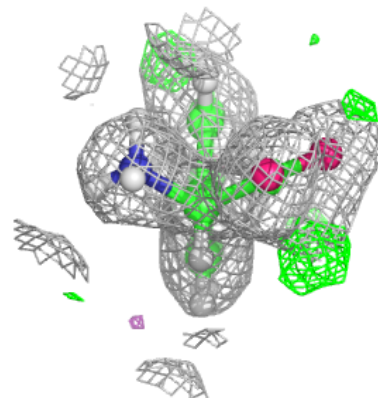
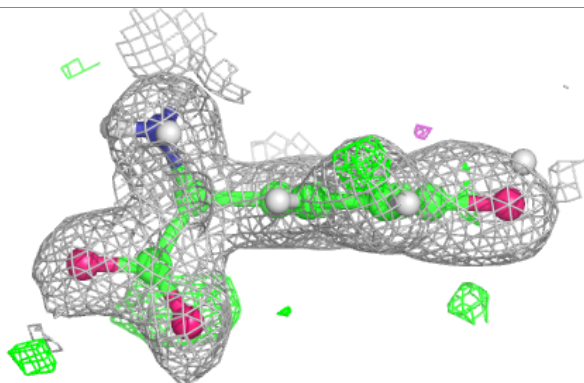
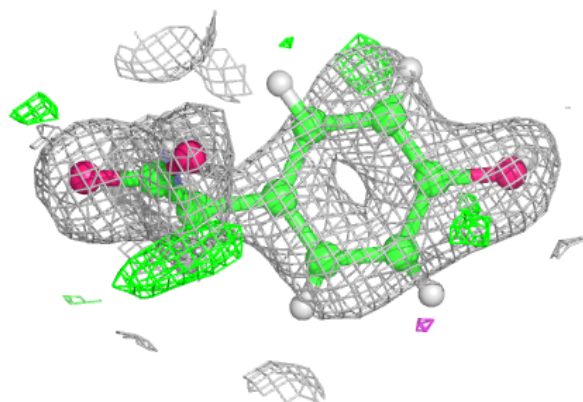
The following is a graphical depiction of the model fit to experimental electron density of all instances of the Ligand of Interest. In addition, ligands with molecular weight > 250 and outliers as shown on the geometry validation Tables will also be included. Each fit is shown from different orientation to approximate a three-dimensional view.

Electron density around D4P B 501:

$2mF_o-DF_c$ (at 0.7 rmsd) in gray
 mF_o-DF_c (at 3 rmsd) in purple (negative)
and green (positive)

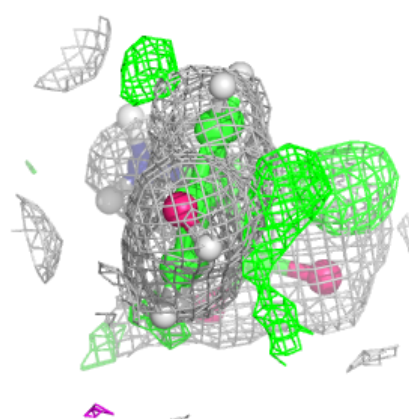
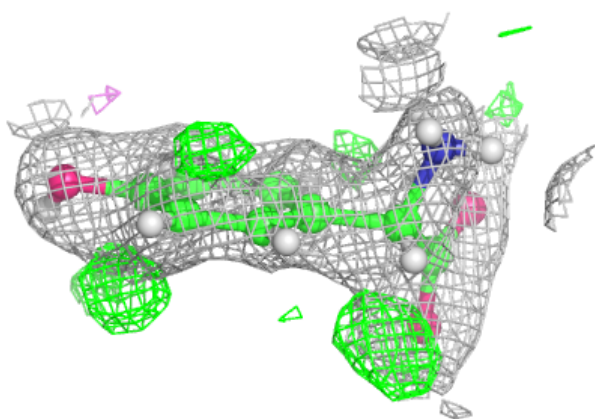
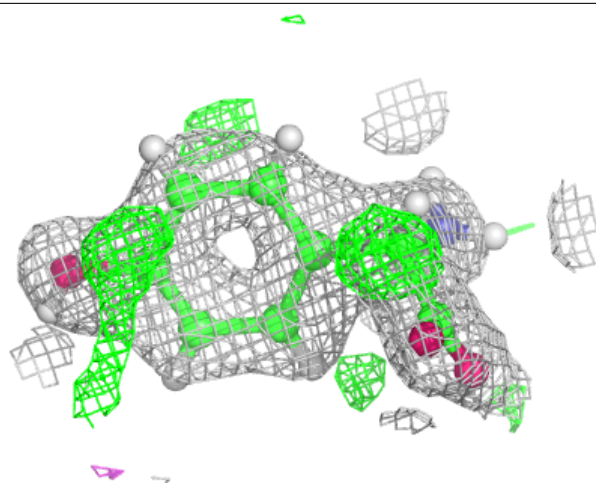
**Electron density around D4P A 503:**

$2mF_o-DF_c$ (at 0.7 rmsd) in gray
 mF_o-DF_c (at 3 rmsd) in purple (negative)
and green (positive)



Electron density around D4P A 504:

$2mF_o-DF_c$ (at 0.7 rmsd) in gray
 mF_o-DF_c (at 3 rmsd) in purple (negative)
and green (positive)

**6.5 Other polymers** [\(i\)](#)

There are no such residues in this entry.