



Full wwPDB EM Validation Report ⓘ

Nov 20, 2022 – 02:25 am GMT

PDB ID : 6GJ3
EMDB ID : EMD-0010
Title : The baseplate complex from the type VI secretion system
Authors : Rapisarda, C.; Fronzes, R.
Deposited on : 2018-05-15
Resolution : 4.30 Å (reported)

This is a Full wwPDB EM Validation Report for a publicly released PDB entry.

We welcome your comments at validation@mail.wwpdb.org

A user guide is available at

<https://www.wwpdb.org/validation/2017/EMValidationReportHelp>

with specific help available everywhere you see the ⓘ symbol.

The types of validation reports are described at

<http://www.wwpdb.org/validation/2017/FAQs#types>.

The following versions of software and data (see [references ⓘ](#)) were used in the production of this report:

EMDB validation analysis : 0.0.1.dev43
MolProbity : 4.02b-467
Percentile statistics : 20191225.v01 (using entries in the PDB archive December 25th 2019)
MapQ : 1.9.9
Ideal geometry (proteins) : Engh & Huber (2001)
Ideal geometry (DNA, RNA) : Parkinson et al. (1996)
Validation Pipeline (wwPDB-VP) : 2.31.2

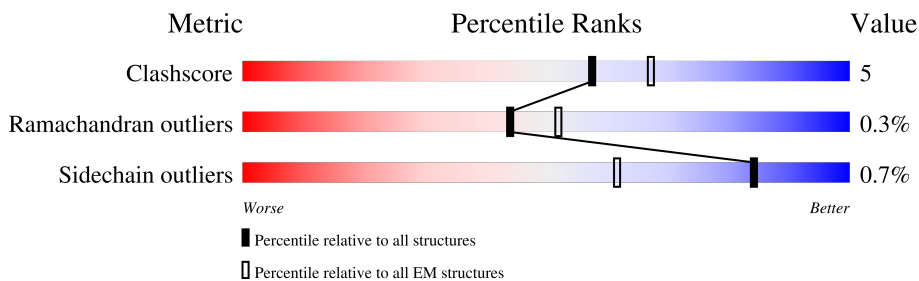
1 Overall quality at a glance

The following experimental techniques were used to determine the structure:

ELECTRON MICROSCOPY

The reported resolution of this entry is 4.30 Å.

Percentile scores (ranging between 0-100) for global validation metrics of the entry are shown in the following graphic. The table shows the number of entries on which the scores are based.



Metric	Whole archive (#Entries)	EM structures (#Entries)
Clashscore	158937	4297
Ramachandran outliers	154571	4023
Sidechain outliers	154315	3826

The table below summarises the geometric issues observed across the polymeric chains and their fit to the map. The red, orange, yellow and green segments of the bar indicate the fraction of residues that contain outliers for ≥ 3 , 2, 1 and 0 types of geometric quality criteria respectively. A grey segment represents the fraction of residues that are not modelled. The numeric value for each fraction is indicated below the corresponding segment, with a dot representing fractions $\leq 5\%$. The upper red bar (where present) indicates the fraction of residues that have poor fit to the EM map (all-atom inclusion $< 40\%$). The numeric value is given above the bar.

Mol	Chain	Length	Quality of chain
1	C	267	
2	D	445	
2	E	445	
2	F	445	
2	G	445	
2	H	445	
2	I	445	

2 Entry composition i

There are 2 unique types of molecules in this entry. The entry contains 17405 atoms, of which 0 are hydrogens and 0 are deuteriums.

In the tables below, the AltConf column contains the number of residues with at least one atom in alternate conformation and the Trace column contains the number of residues modelled with at most 2 atoms.

- Molecule 1 is a protein called TssG.

Mol	Chain	Residues	Atoms					AltConf	Trace
			Total	C	N	O	S		
1	C	62	479	293	101	81	4	0	0

There is a discrepancy between the modelled and reference sequences:

Chain	Residue	Modelled	Actual	Comment	Reference
C	332	THR	ALA	conflict	UNP H4UNW2

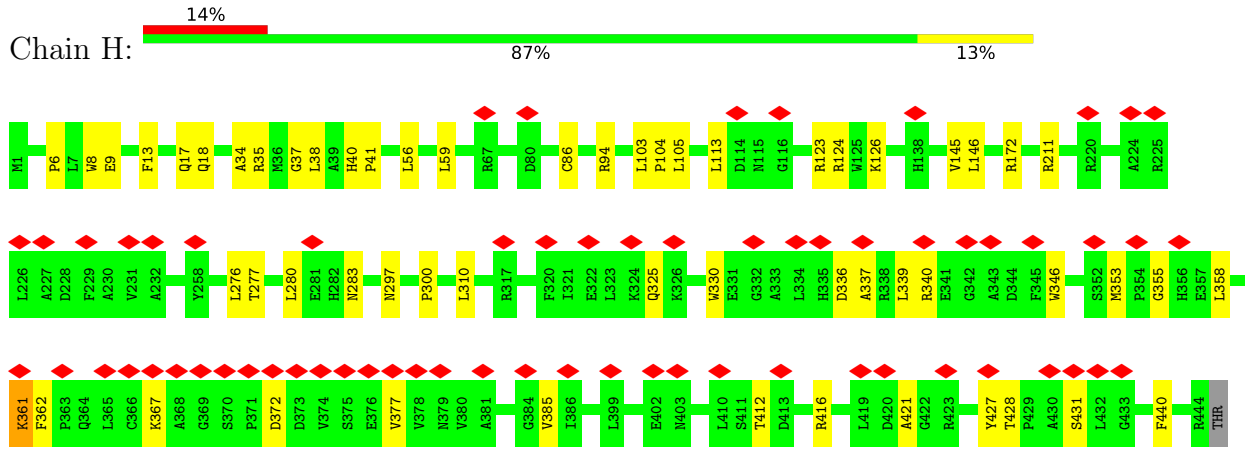
- Molecule 2 is a protein called TssK.

Mol	Chain	Residues	Atoms					AltConf	Trace
			Total	C	N	O	S		
2	D	311	2473	1566	447	449	11	0	0
2	E	311	2479	1568	449	451	11	0	0
2	F	311	2482	1570	451	450	11	0	0
2	G	444	3509	2225	631	637	16	0	0
2	H	444	3498	2216	629	637	16	0	0
2	I	311	2485	1571	452	451	11	0	0

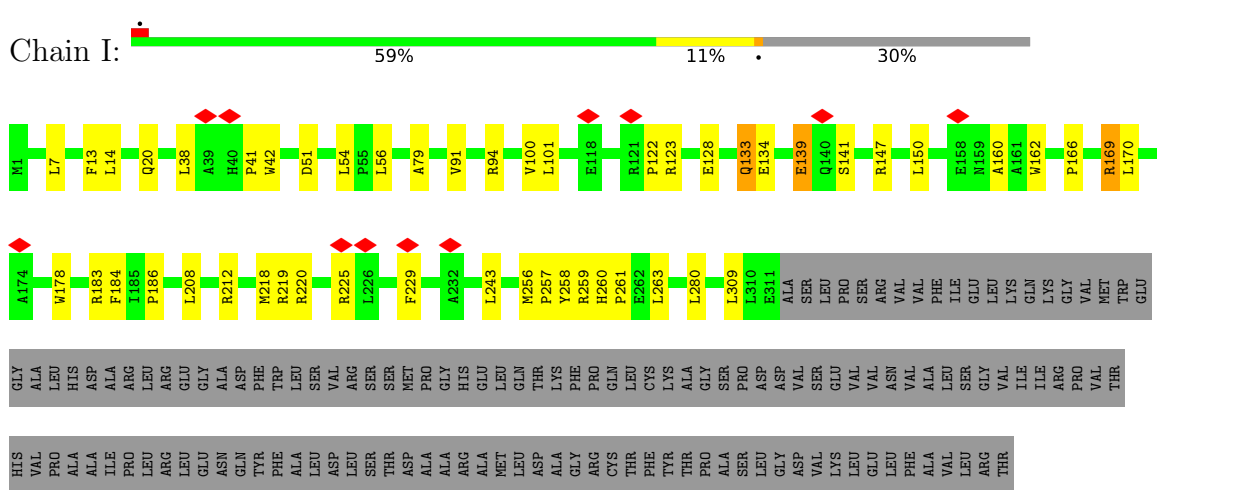
There are 6 discrepancies between the modelled and reference sequences:

Chain	Residue	Modelled	Actual	Comment	Reference
D	202	LEU	ALA	conflict	UNP H4UNX9
E	202	LEU	ALA	conflict	UNP H4UNX9
F	202	LEU	ALA	conflict	UNP H4UNX9
G	202	LEU	ALA	conflict	UNP H4UNX9
H	202	LEU	ALA	conflict	UNP H4UNX9
I	202	LEU	ALA	conflict	UNP H4UNX9

• Molecule 2: TssK



• Molecule 2: TssK



4 Experimental information

Property	Value	Source
EM reconstruction method	SINGLE PARTICLE	Depositor
Imposed symmetry	POINT, Not provided	
Number of particles used	32504	Depositor
Resolution determination method	FSC 0.143 CUT-OFF	Depositor
CTF correction method	PHASE FLIPPING AND AMPLITUDE CORRECTION	Depositor
Microscope	FEI TITAN KRIOS	Depositor
Voltage (kV)	300	Depositor
Electron dose ($e^-/\text{\AA}^2$)	1.5	Depositor
Minimum defocus (nm)	400	Depositor
Maximum defocus (nm)	3000	Depositor
Magnification	130000	Depositor
Image detector	GATAN K2 SUMMIT (4k x 4k)	Depositor
Maximum map value	32.493	Depositor
Minimum map value	-13.500	Depositor
Average map value	0.000	Depositor
Map value standard deviation	1.000	Depositor
Recommended contour level	6.0	Depositor
Map size (Å)	495.0, 495.0, 495.0	wwPDB
Map dimensions	450, 450, 450	wwPDB
Map angles (°)	90.0, 90.0, 90.0	wwPDB
Pixel spacing (Å)	1.1, 1.1, 1.1	Depositor

5 Model quality

5.1 Standard geometry

The Z score for a bond length (or angle) is the number of standard deviations the observed value is removed from the expected value. A bond length (or angle) with $|Z| > 5$ is considered an outlier worth inspection. RMSZ is the root-mean-square of all Z scores of the bond lengths (or angles).

Mol	Chain	Bond lengths		Bond angles	
		RMSZ	# Z >5	RMSZ	# Z >5
1	C	0.41	0/488	0.92	1/659 (0.2%)
2	D	0.39	0/2531	0.59	0/3453
2	E	0.40	0/2537	0.63	0/3461
2	F	0.40	0/2540	0.61	0/3464
2	G	0.37	0/3590	0.64	1/4892 (0.0%)
2	H	0.38	0/3578	0.63	1/4876 (0.0%)
2	I	0.37	0/2543	0.64	1/3468 (0.0%)
All	All	0.39	0/17807	0.63	4/24273 (0.0%)

Chiral center outliers are detected by calculating the chiral volume of a chiral center and verifying if the center is modelled as a planar moiety or with the opposite hand. A planarity outlier is detected by checking planarity of atoms in a peptide group, atoms in a mainchain group or atoms of a sidechain that are expected to be planar.

Mol	Chain	#Chirality outliers	#Planarity outliers
1	C	0	6
2	E	0	2
2	F	0	3
2	G	0	4
2	H	0	3
2	I	0	5
All	All	0	23

There are no bond length outliers.

All (4) bond angle outliers are listed below:

Mol	Chain	Res	Type	Atoms	Z	Observed(°)	Ideal(°)
2	I	14	LEU	CA-CB-CG	7.05	131.52	115.30
2	G	313	SER	C-N-CA	6.31	137.47	121.70
1	C	219	ARG	C-N-CA	5.07	134.38	121.70
2	H	276	LEU	CA-CB-CG	5.04	126.89	115.30

There are no chirality outliers.

All (23) planarity outliers are listed below:

Mol	Chain	Res	Type	Group
1	C	219	ARG	Peptide
1	C	220	ILE	Peptide
1	C	237	LYS	Peptide
1	C	305	ASP	Peptide
1	C	308	LEU	Peptide
1	C	310	CYS	Peptide
2	E	190	THR	Peptide
2	E	78	ARG	Peptide
2	F	162	TRP	Peptide
2	F	196	SER	Peptide
2	F	40	HIS	Peptide
2	G	133	GLN	Peptide
2	G	160	ALA	Peptide
2	G	256	MET	Peptide
2	G	40	HIS	Peptide
2	H	105	LEU	Peptide
2	H	361	LYS	Peptide
2	H	56	LEU	Peptide
2	I	133	GLN	Peptide
2	I	139	GLU	Peptide
2	I	186	PRO	Peptide
2	I	41	PRO	Peptide
2	I	56	LEU	Peptide

5.2 Too-close contacts [i](#)

In the following table, the Non-H and H(model) columns list the number of non-hydrogen atoms and hydrogen atoms in the chain respectively. The H(added) column lists the number of hydrogen atoms added and optimized by MolProbity. The Clashes column lists the number of clashes within the asymmetric unit, whereas Symm-Clashes lists symmetry-related clashes.

Mol	Chain	Non-H	H(model)	H(added)	Clashes	Symm-Clashes
1	C	479	0	500	11	0
2	D	2473	0	2462	23	0
2	E	2479	0	2470	20	0
2	F	2482	0	2477	34	0
2	G	3509	0	3519	40	0
2	H	3498	0	3496	38	0
2	I	2485	0	2481	34	0
All	All	17405	0	17405	174	0

The all-atom clashscore is defined as the number of clashes found per 1000 atoms (including hydrogen atoms). The all-atom clashscore for this structure is 5.

All (174) close contacts within the same asymmetric unit are listed below, sorted by their clash magnitude.

Atom-1	Atom-2	Interatomic distance (Å)	Clash overlap (Å)
2:D:134:GLU:HB2	2:E:17:GLN:HE21	1.59	0.66
2:E:230:ALA:HB3	2:E:233:ASP:HB2	1.76	0.66
2:E:134:GLU:HB2	2:F:17:GLN:HE21	1.60	0.66
2:H:358:LEU:HA	2:H:361:LYS:HB2	1.79	0.64
2:G:136:ALA:HB1	2:H:9:GLU:HG3	1.79	0.64
2:E:136:ALA:HA	2:F:111:GLY:HA3	1.81	0.63
2:D:2:LYS:HE3	2:F:77:GLU:HB3	1.79	0.63
2:E:94:ARG:HD2	2:E:172:ARG:HG3	1.80	0.62
2:D:229:PHE:HA	2:D:233:ASP:HB2	1.81	0.61
2:D:212:ARG:NH1	2:D:247:GLU:OE1	2.34	0.61
2:G:80:ASP:OD1	2:G:80:ASP:N	2.33	0.61
2:H:40:HIS:ND1	2:H:41:PRO:O	2.31	0.59
2:G:107:ASN:HD21	2:G:123:ARG:HH21	1.48	0.59
2:E:280:LEU:HD11	2:E:284:VAL:H	1.67	0.59
2:D:120:GLU:OE1	2:D:121:ARG:NH1	2.35	0.59
2:F:94:ARG:HD3	2:F:172:ARG:HG2	1.85	0.58
2:D:133:GLN:NE2	2:E:109:ASN:O	2.36	0.58
2:G:221:GLU:HB3	2:G:225:ARG:HD2	1.84	0.58
2:G:314:LEU:HD13	2:G:318:VAL:HG23	1.86	0.58
2:G:350:ARG:HB2	2:G:436:LYS:HB2	1.84	0.58
2:E:80:ASP:OD2	2:E:147:ARG:NH2	2.36	0.58
2:G:256:MET:O	2:G:258:TYR:N	2.35	0.58
2:G:221:GLU:O	2:G:225:ARG:HB2	2.05	0.57
2:H:277:THR:O	2:I:219:ARG:NH2	2.38	0.57
2:G:6:PRO:HA	2:H:145:VAL:HA	1.86	0.57
2:I:134:GLU:HB3	2:I:139:GLU:HG2	1.87	0.57
1:C:310:CYS:SG	1:C:311:ARG:NH2	2.78	0.56
2:F:219:ARG:HA	2:F:222:ASN:HB2	1.87	0.56
2:F:59:LEU:HD22	2:F:170:LEU:HD11	1.87	0.56
2:I:133:GLN:HE22	2:I:141:SER:HB3	1.70	0.56
2:H:337:ALA:O	2:H:340:ARG:NH1	2.39	0.56
2:F:232:ALA:O	2:F:236:LEU:HB2	2.05	0.56
2:I:259:ARG:HD3	2:I:263:LEU:HD23	1.85	0.56
1:C:313:ALA:HA	1:C:318:GLN:HE22	1.71	0.56
2:D:7:LEU:HD13	2:F:146:LEU:HD13	1.88	0.55
2:E:9:GLU:HG3	2:E:11:GLY:H	1.72	0.55
2:D:292:HIS:HB3	2:D:294:THR:H	1.72	0.55

Continued on next page...

Continued from previous page...

Atom-1	Atom-2	Interatomic distance (Å)	Clash overlap (Å)
2:G:100:VAL:HA	2:G:166:PRO:HA	1.89	0.54
2:H:297:ASN:HA	2:H:300:PRO:HD2	1.88	0.54
1:C:321:ARG:NH1	1:C:322:THR:OG1	2.40	0.54
2:H:8:TRP:O	2:I:20:GLN:NE2	2.41	0.54
2:F:119:SER:OG	2:F:121:ARG:O	2.25	0.54
2:I:218:MET:O	2:I:225:ARG:NH1	2.40	0.54
2:D:114:ASP:HA	2:D:123:ARG:HH11	1.73	0.54
2:H:35:ARG:NH1	2:I:258:TYR:OH	2.41	0.54
2:E:219:ARG:HG2	2:E:222:ASN:HD22	1.73	0.53
2:G:169:ARG:NH2	2:G:183:ARG:O	2.41	0.53
2:H:8:TRP:NE1	2:H:18:GLN:OE1	2.40	0.53
2:H:412:THR:O	2:H:416:ARG:NE	2.40	0.53
2:H:38:LEU:O	2:I:259:ARG:NH2	2.43	0.52
2:D:172:ARG:NH1	2:D:176:GLY:O	2.39	0.52
2:G:355:GLY:HA2	2:G:358:LEU:HD12	1.90	0.52
2:H:37:GLY:O	2:I:259:ARG:NH1	2.43	0.52
2:H:59:LEU:HB3	2:H:86:CYS:HB3	1.91	0.52
2:F:277:THR:HA	2:F:280:LEU:HD12	1.92	0.51
2:G:372:ASP:H	2:G:423:ARG:HH21	1.57	0.51
2:H:103:LEU:HD12	2:H:104:PRO:HD2	1.92	0.51
2:I:133:GLN:HB2	2:I:139:GLU:HA	1.92	0.51
2:E:100:VAL:HA	2:E:166:PRO:HA	1.92	0.51
2:G:214:ARG:HH12	2:G:397:ILE:HD12	1.74	0.51
2:G:212:ARG:NH2	2:G:247:GLU:OE2	2.42	0.51
2:F:230:ALA:H	2:F:233:ASP:HB2	1.76	0.51
2:F:219:ARG:NH1	2:F:223:ASN:OD1	2.43	0.51
2:G:219:ARG:HA	2:G:222:ASN:HB2	1.93	0.50
2:H:428:THR:HB	2:H:431:SER:HB3	1.93	0.50
2:D:95:SER:OG	2:D:96:LEU:N	2.45	0.50
2:D:249:VAL:HG21	2:E:270:ARG:HE	1.76	0.50
2:E:259:ARG:HD3	2:E:263:LEU:HD23	1.93	0.50
2:F:94:ARG:HH11	2:F:171:VAL:HB	1.76	0.50
2:H:280:LEU:O	2:I:220:ARG:NH2	2.44	0.50
2:G:41:PRO:HA	2:G:69:PRO:HB3	1.94	0.50
2:G:157:GLN:HE21	2:G:160:ALA:HA	1.78	0.49
2:H:325:GLN:HB3	2:H:330:TRP:HA	1.94	0.49
2:G:146:LEU:HB3	2:I:7:LEU:HD12	1.94	0.49
2:H:94:ARG:HD2	2:H:172:ARG:HG3	1.94	0.49
2:D:235:SER:HA	2:D:238:TRP:HD1	1.78	0.48
2:G:111:GLY:H	2:G:123:ARG:HD3	1.78	0.48
2:G:230:ALA:HA	2:I:229:PHE:HZ	1.78	0.48

Continued on next page...

Continued from previous page...

Atom-1	Atom-2	Interatomic distance (Å)	Clash overlap (Å)
2:I:91:VAL:HG13	2:I:94:ARG:HD3	1.95	0.48
2:F:86:CYS:SG	2:F:87:ASP:N	2.87	0.48
2:E:288:PRO:HB2	2:E:290:TYR:HD1	1.79	0.48
2:F:94:ARG:HB2	2:F:172:ARG:H	1.79	0.48
2:H:211:ARG:NH1	2:H:310:LEU:O	2.47	0.48
2:F:98:ASP:N	2:F:98:ASP:OD1	2.45	0.48
2:D:277:THR:HG22	2:F:244:ASN:HD22	1.78	0.47
2:I:256:MET:SD	2:I:259:ARG:NE	2.71	0.47
2:I:280:LEU:HD11	2:I:309:LEU:HD21	1.96	0.47
2:D:113:LEU:HD23	2:D:115:ASN:H	1.79	0.47
2:D:172:ARG:HD3	2:D:176:GLY:HA2	1.97	0.47
1:C:307:ARG:HH22	2:H:13:PHE:HE1	1.62	0.47
2:D:121:ARG:HD2	2:D:122:PRO:HD3	1.96	0.47
2:I:38:LEU:HD22	2:I:42:TRP:CE2	2.50	0.47
2:F:42:TRP:HB3	2:F:67:ARG:HB2	1.95	0.47
2:I:169:ARG:NH2	2:I:184:PHE:O	2.48	0.47
2:G:351:SER:HB3	2:G:435:VAL:HG23	1.97	0.46
1:C:301:SER:HB3	1:C:303:LEU:HD23	1.97	0.46
2:D:2:LYS:HD2	2:F:78:ARG:HB3	1.98	0.46
2:G:362:PHE:HZ	2:G:435:VAL:HG21	1.81	0.46
2:I:170:LEU:HD12	2:I:178:TRP:HB3	1.97	0.46
2:E:184:PHE:CZ	2:E:187:PRO:HD3	2.51	0.46
2:H:17:GLN:HG2	2:I:133:GLN:HA	1.97	0.46
2:I:128:GLU:OE1	2:I:147:ARG:NE	2.44	0.46
2:I:122:PRO:O	2:I:123:ARG:NH1	2.42	0.46
2:G:127:SER:OG	2:G:128:GLU:N	2.49	0.45
2:E:188:LEU:HD21	2:E:293:GLU:HG3	1.98	0.45
2:G:33:VAL:HG13	2:H:34:ALA:HB2	1.98	0.45
2:H:372:ASP:HB3	2:H:421:ALA:HB1	1.98	0.45
2:D:96:LEU:HD22	2:D:169:ARG:HD3	1.99	0.45
2:G:231:VAL:HA	2:G:234:VAL:HG13	1.97	0.45
2:H:6:PRO:HG3	2:H:18:GLN:HA	1.98	0.45
2:I:208:LEU:HD11	2:I:243:LEU:HD22	1.99	0.45
2:H:353:MET:HG3	2:H:355:GLY:H	1.82	0.44
2:F:172:ARG:HA	2:F:178:TRP:HA	2.00	0.44
2:G:350:ARG:NH1	2:G:403:ASN:O	2.51	0.44
2:I:38:LEU:HD13	2:I:42:TRP:HE1	1.82	0.44
2:D:79:ALA:O	2:D:147:ARG:NH1	2.50	0.44
2:G:7:LEU:HG	2:H:146:LEU:HB3	1.99	0.44
2:H:35:ARG:HB3	2:I:258:TYR:HE2	1.83	0.44
2:E:232:ALA:O	2:E:236:LEU:N	2.51	0.43

Continued on next page...

Continued from previous page...

Atom-1	Atom-2	Interatomic distance (Å)	Clash overlap (Å)
2:I:101:LEU:HD11	2:I:150:LEU:HD22	2.00	0.43
2:E:15:MET:HB2	2:E:18:GLN:HG2	2.00	0.43
2:F:100:VAL:HG21	2:F:163:LEU:HD13	1.99	0.43
2:F:215:LEU:HB3	2:F:236:LEU:HD11	2.00	0.43
1:C:231:HIS:HB2	1:C:235:SER:HB2	2.01	0.43
2:G:330:TRP:HZ2	2:G:437:LEU:HD12	1.83	0.43
2:F:67:ARG:HD2	2:F:73:LEU:HA	2.00	0.43
2:G:314:LEU:H	2:G:314:LEU:HG	1.69	0.43
2:E:45:VAL:HG12	2:E:190:THR:HB	2.01	0.43
2:H:104:PRO:HG2	2:H:124:ARG:HB3	2.01	0.43
2:H:346:TRP:HB2	2:H:440:PHE:CD2	2.53	0.43
2:G:5:ARG:HG3	2:H:146:LEU:HG	2.00	0.43
2:F:5:ARG:HD3	2:F:25:TRP:CG	2.54	0.43
2:F:133:GLN:HG2	2:F:140:GLN:HB3	2.01	0.43
2:G:168:THR:OG1	2:G:169:ARG:N	2.52	0.42
2:D:131:ASN:HB3	2:D:140:GLN:HG3	2.00	0.42
2:G:97:VAL:HG13	2:G:154:MET:HG3	2.00	0.42
2:F:232:ALA:O	2:F:236:LEU:CB	2.66	0.42
2:I:79:ALA:O	2:I:147:ARG:NH1	2.51	0.42
2:I:100:VAL:HA	2:I:166:PRO:HA	2.01	0.42
2:D:57:SER:HB3	2:D:88:LEU:HB2	2.00	0.42
2:F:291:HIS:CD2	2:F:294:THR:H	2.37	0.42
2:H:358:LEU:O	2:H:362:PHE:N	2.52	0.42
2:F:166:PRO:HB2	2:F:184:PHE:HZ	1.84	0.42
2:H:336:ASP:HB3	2:H:339:LEU:HG	2.01	0.42
2:I:160:ALA:HB1	2:I:162:TRP:HB2	2.00	0.42
1:C:220:ILE:HD11	1:C:222:LEU:HB3	2.00	0.42
1:C:223:LYS:H	1:C:223:LYS:HD2	1.84	0.42
2:G:351:SER:N	2:G:403:ASN:HD22	2.18	0.42
2:H:113:LEU:HD22	2:H:126:LYS:HA	2.02	0.42
2:G:350:ARG:HA	2:G:403:ASN:HB3	2.02	0.42
1:C:223:LYS:HE3	1:C:223:LYS:HB3	1.94	0.41
2:E:288:PRO:HB2	2:E:290:TYR:CD1	2.54	0.41
2:I:51:ASP:HA	2:I:54:LEU:HD13	2.02	0.41
2:G:388:ARG:HB2	2:G:407:ALA:HB3	2.02	0.41
2:I:169:ARG:HG2	2:I:183:ARG:HH21	1.86	0.41
2:F:5:ARG:HD3	2:F:25:TRP:CD1	2.56	0.41
2:F:265:TYR:OH	2:F:288:PRO:O	2.37	0.41
2:G:74:ILE:HG21	2:G:150:LEU:HD11	2.03	0.41
2:G:330:TRP:HE1	2:G:428:THR:HG23	1.86	0.41
1:C:220:ILE:HG13	1:C:222:LEU:N	2.35	0.41

Continued on next page...

Continued from previous page...

Atom-1	Atom-2	Interatomic distance (Å)	Clash overlap (Å)
2:G:98:ASP:O	2:G:155:ALA:N	2.51	0.41
2:H:367:LYS:HA	2:H:385:VAL:HB	2.03	0.41
2:H:353:MET:HG2	2:H:358:LEU:HB3	2.03	0.41
2:H:377:VAL:HG21	2:H:427:TYR:HA	2.03	0.41
2:F:205:LEU:HD22	2:F:254:LEU:HD12	2.03	0.40
2:I:260:HIS:HA	2:I:261:PRO:HD3	1.87	0.40
1:C:218:ARG:HG2	1:C:219:ARG:H	1.86	0.40
2:D:114:ASP:HA	2:D:123:ARG:HD2	2.04	0.40
2:F:8:TRP:HH2	2:F:19:PHE:HE1	1.67	0.40
2:F:133:GLN:HB3	2:F:140:GLN:HA	2.03	0.40
2:I:123:ARG:HA	2:I:123:ARG:HD3	1.89	0.40
2:G:93:ASP:HB3	2:G:96:LEU:HG	2.02	0.40
2:H:283:ASN:OD1	2:I:212:ARG:NH1	2.47	0.40
2:F:135:LEU:H	2:F:135:LEU:HG	1.60	0.40

There are no symmetry-related clashes.

5.3 Torsion angles [i](#)

5.3.1 Protein backbone [i](#)

In the following table, the Percentiles column shows the percent Ramachandran outliers of the chain as a percentile score with respect to all PDB entries followed by that with respect to all EM entries.

The Analysed column shows the number of residues for which the backbone conformation was analysed, and the total number of residues.

Mol	Chain	Analysed	Favoured	Allowed	Outliers	Percentiles	
1	C	58/267 (22%)	28 (48%)	29 (50%)	1 (2%)	9	43
2	D	309/445 (69%)	272 (88%)	37 (12%)	0	100	100
2	E	309/445 (69%)	276 (89%)	33 (11%)	0	100	100
2	F	309/445 (69%)	271 (88%)	37 (12%)	1 (0%)	41	76
2	G	442/445 (99%)	383 (87%)	56 (13%)	3 (1%)	22	62
2	H	442/445 (99%)	381 (86%)	61 (14%)	0	100	100
2	I	309/445 (69%)	267 (86%)	40 (13%)	2 (1%)	25	65
All	All	2178/2937 (74%)	1878 (86%)	293 (14%)	7 (0%)	44	76

All (7) Ramachandran outliers are listed below:

Mol	Chain	Res	Type
1	C	306	ALA
2	G	36	MET
2	I	13	PHE
2	F	163	LEU
2	G	257	PRO
2	G	315	PRO
2	I	257	PRO

5.3.2 Protein sidechains [i](#)

In the following table, the Percentiles column shows the percent sidechain outliers of the chain as a percentile score with respect to all PDB entries followed by that with respect to all EM entries.

The Analysed column shows the number of residues for which the sidechain conformation was analysed, and the total number of residues.

Mol	Chain	Analysed	Rotameric	Outliers	Percentiles	
1	C	54/224 (24%)	50 (93%)	4 (7%)	13	40
2	D	268/382 (70%)	266 (99%)	2 (1%)	84	90
2	E	270/382 (71%)	269 (100%)	1 (0%)	91	94
2	F	270/382 (71%)	267 (99%)	3 (1%)	73	85
2	G	381/382 (100%)	380 (100%)	1 (0%)	92	95
2	H	378/382 (99%)	377 (100%)	1 (0%)	92	95
2	I	271/382 (71%)	270 (100%)	1 (0%)	91	94
All	All	1892/2516 (75%)	1879 (99%)	13 (1%)	84	90

All (13) residues with a non-rotameric sidechain are listed below:

Mol	Chain	Res	Type
1	C	223	LYS
1	C	242	MET
1	C	319	LEU
1	C	321	ARG
2	D	121	ARG
2	D	220	ARG
2	E	241	ASN
2	F	14	LEU
2	F	78	ARG

Continued on next page...

Continued from previous page...

Mol	Chain	Res	Type
2	F	163	LEU
2	G	400	ARG
2	H	123	ARG
2	I	169	ARG

Sometimes sidechains can be flipped to improve hydrogen bonding and reduce clashes. All (16) such sidechains are listed below:

Mol	Chain	Res	Type
1	C	232	HIS
1	C	318	GLN
2	D	148	HIS
2	E	17	GLN
2	E	177	GLN
2	E	222	ASN
2	E	241	ASN
2	F	40	HIS
2	F	291	HIS
2	F	292	HIS
2	F	297	ASN
2	G	156	HIS
2	G	157	GLN
2	H	206	HIS
2	I	148	HIS
2	I	282	HIS

5.3.3 RNA [i](#)

There are no RNA molecules in this entry.

5.4 Non-standard residues in protein, DNA, RNA chains [i](#)

There are no non-standard protein/DNA/RNA residues in this entry.

5.5 Carbohydrates [i](#)

There are no monosaccharides in this entry.

5.6 Ligand geometry [i](#)

There are no ligands in this entry.

5.7 Other polymers [i](#)

There are no such residues in this entry.

5.8 Polymer linkage issues [i](#)

There are no chain breaks in this entry.

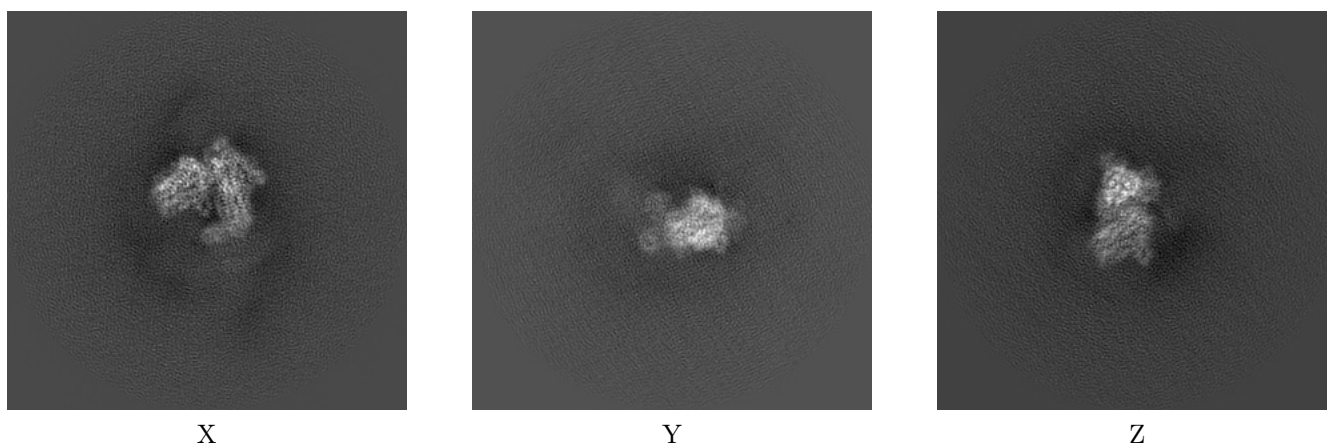
6 Map visualisation [i](#)

This section contains visualisations of the EMDB entry EMD-0010. These allow visual inspection of the internal detail of the map and identification of artifacts.

No raw map or half-maps were deposited for this entry and therefore no images, graphs, etc. pertaining to the raw map can be shown.

6.1 Orthogonal projections [i](#)

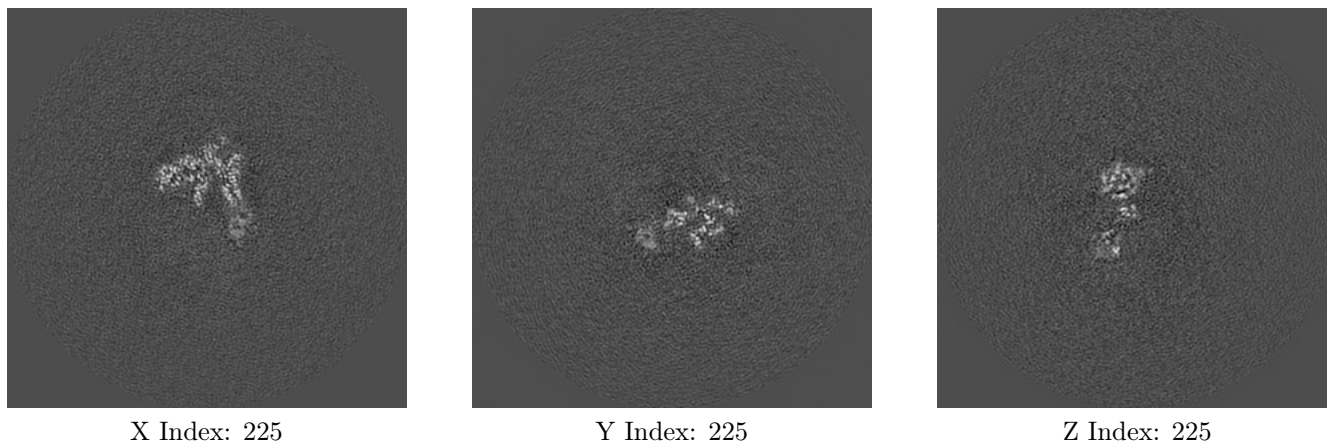
6.1.1 Primary map



The images above show the map projected in three orthogonal directions.

6.2 Central slices [i](#)

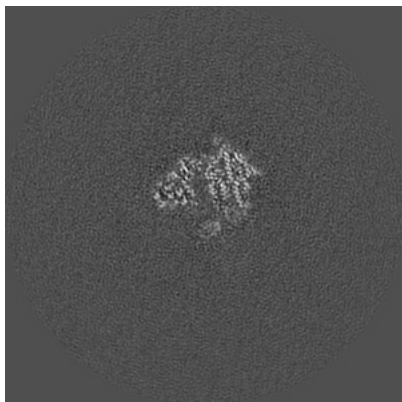
6.2.1 Primary map



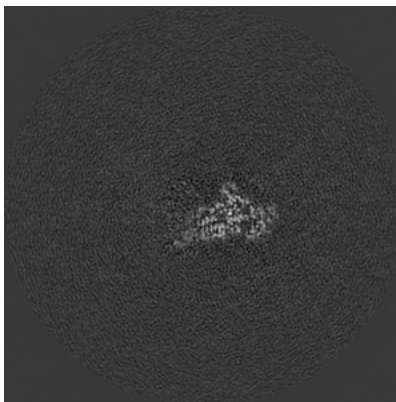
The images above show central slices of the map in three orthogonal directions.

6.3 Largest variance slices [i](#)

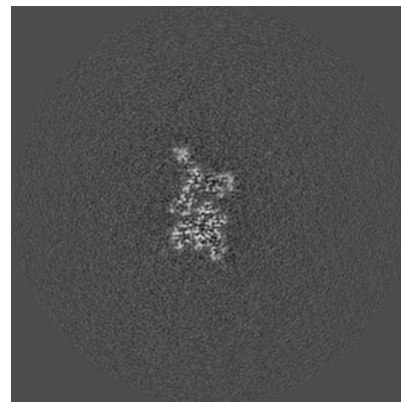
6.3.1 Primary map



X Index: 202



Y Index: 246

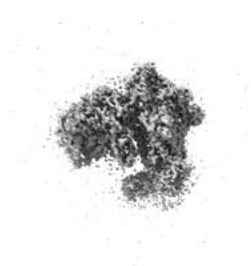


Z Index: 257

The images above show the largest variance slices of the map in three orthogonal directions.

6.4 Orthogonal surface views [i](#)

6.4.1 Primary map



X



Y



Z

The images above show the 3D surface view of the map at the recommended contour level 6.0. These images, in conjunction with the slice images, may facilitate assessment of whether an appropriate contour level has been provided.

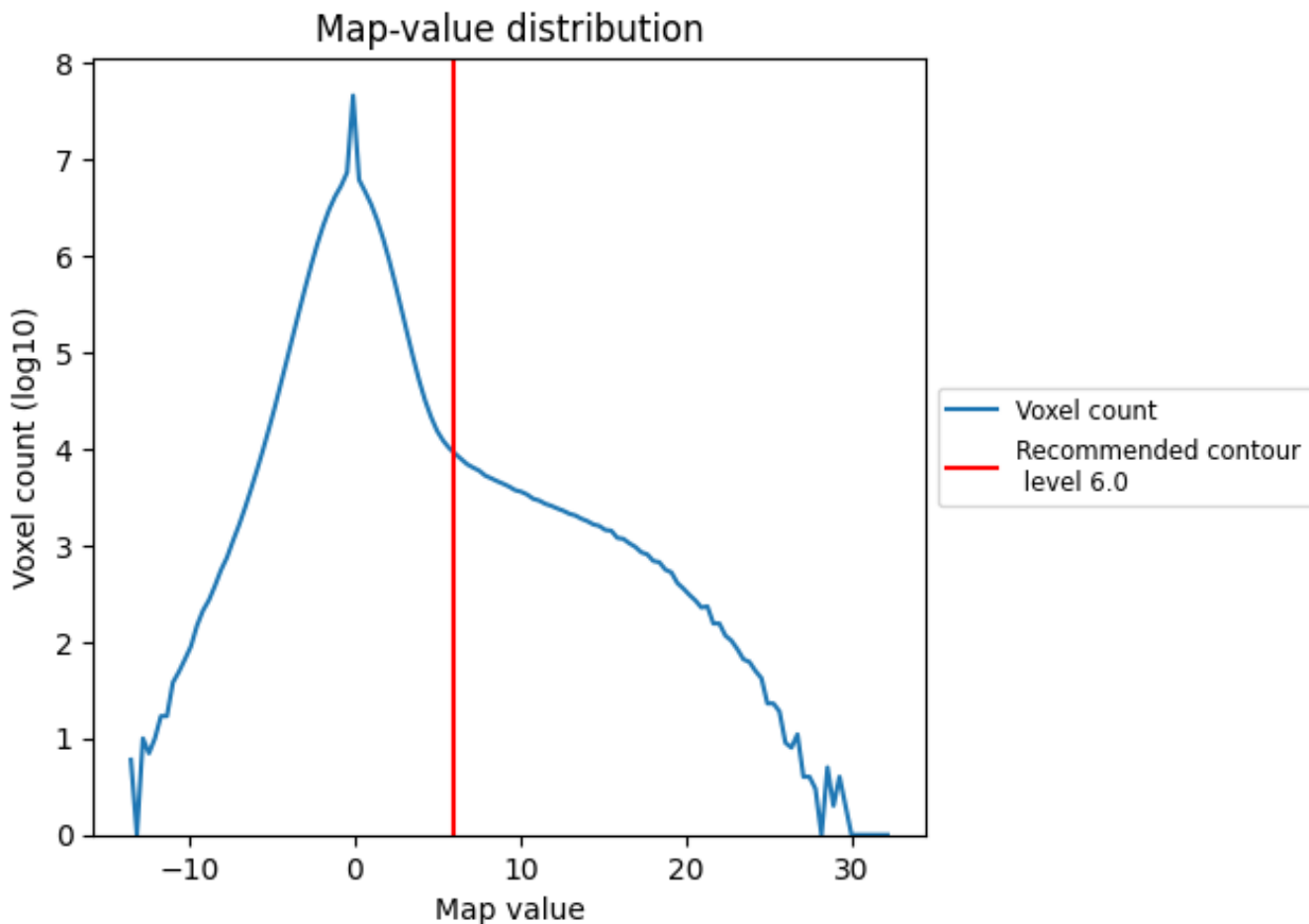
6.5 Mask visualisation

This section was not generated. No masks/segmentation were deposited.

7 Map analysis [i](#)

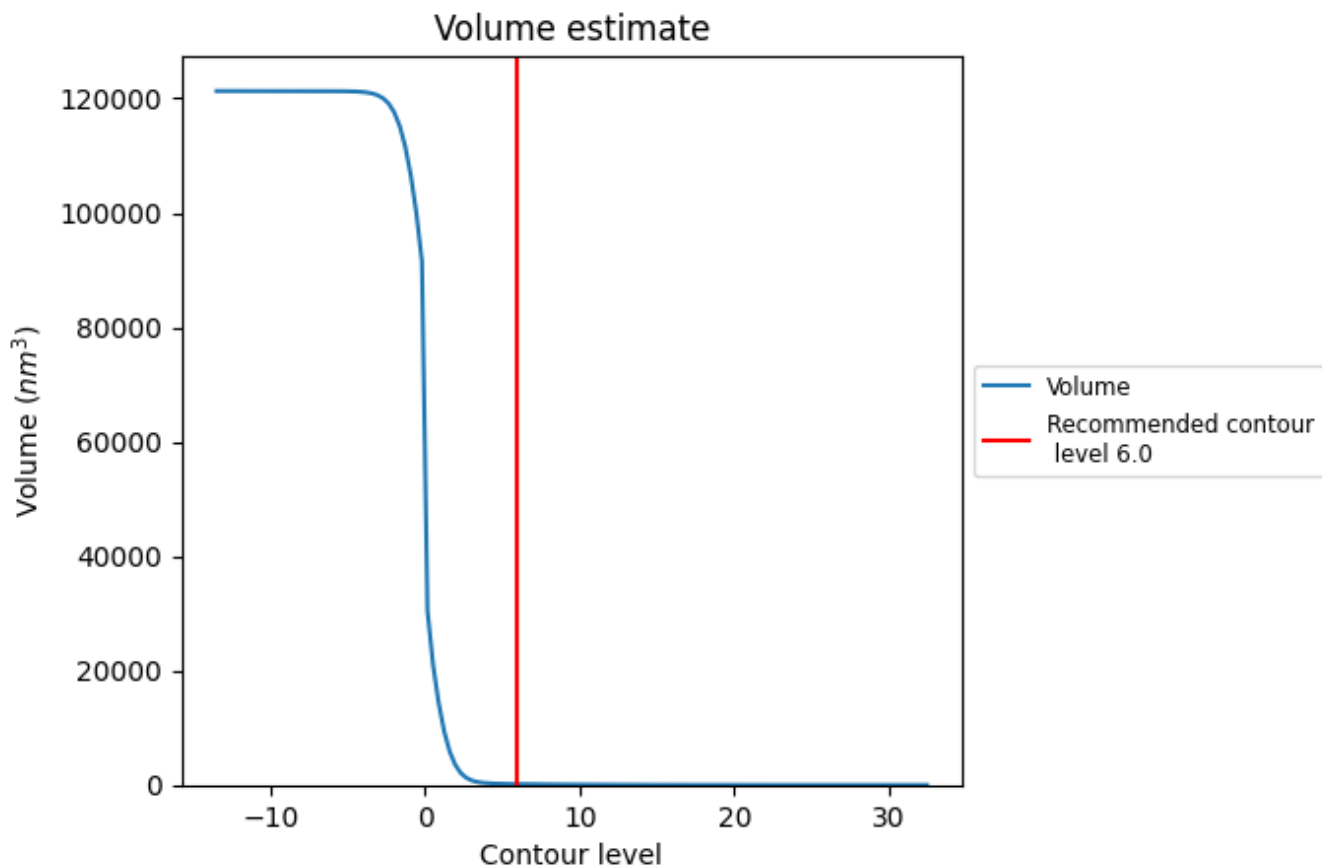
This section contains the results of statistical analysis of the map.

7.1 Map-value distribution [i](#)



The map-value distribution is plotted in 128 intervals along the x-axis. The y-axis is logarithmic. A spike in this graph at zero usually indicates that the volume has been masked.

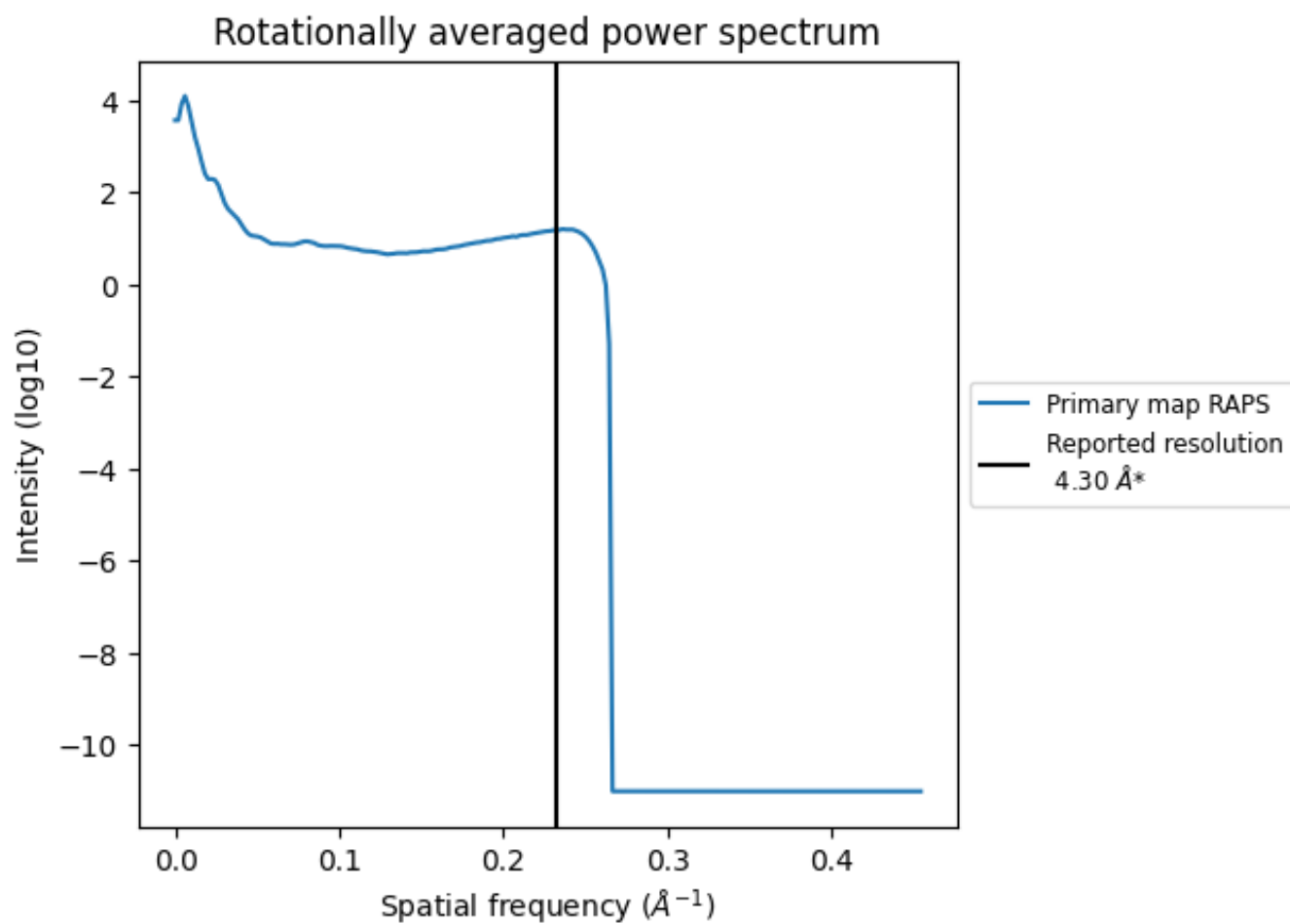
7.2 Volume estimate [i](#)



The volume at the recommended contour level is 150 nm³; this corresponds to an approximate mass of 135 kDa.

The volume estimate graph shows how the enclosed volume varies with the contour level. The recommended contour level is shown as a vertical line and the intersection between the line and the curve gives the volume of the enclosed surface at the given level.

7.3 Rotationally averaged power spectrum [\(i\)](#)



*Reported resolution corresponds to spatial frequency of 0.233\AA^{-1}

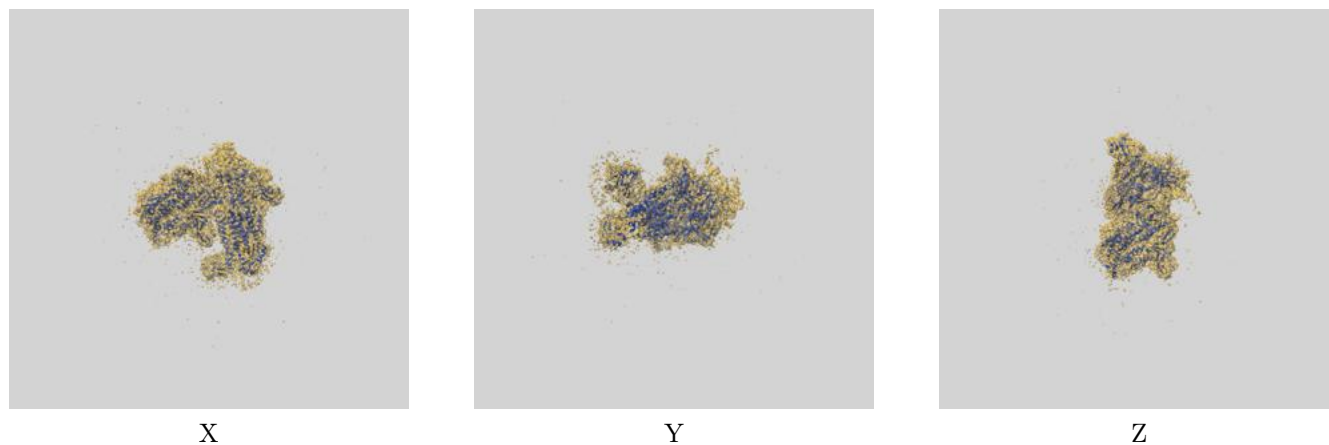
8 Fourier-Shell correlation

This section was not generated. No FSC curve or half-maps provided.

9 Map-model fit [i](#)

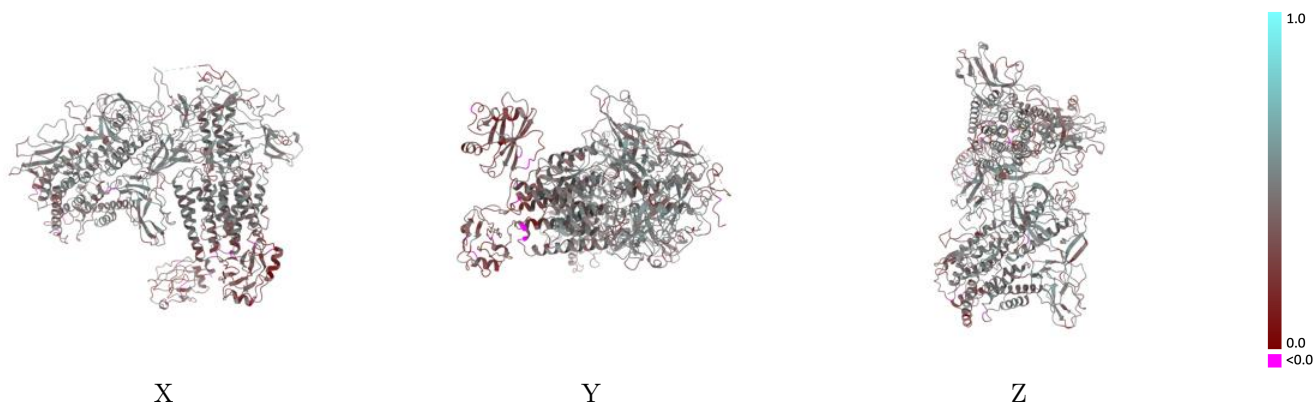
This section contains information regarding the fit between EMDB map EMD-0010 and PDB model 6GJ3. Per-residue inclusion information can be found in section [3](#) on page [4](#).

9.1 Map-model overlay [i](#)



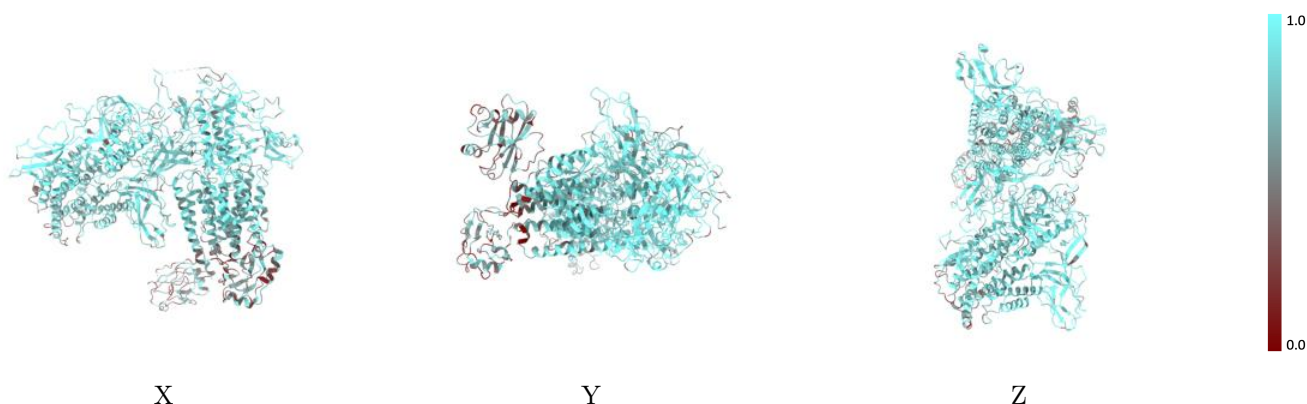
The images above show the 3D surface view of the map at the recommended contour level 6.0 at 50% transparency in yellow overlaid with a ribbon representation of the model coloured in blue. These images allow for the visual assessment of the quality of fit between the atomic model and the map.

9.2 Q-score mapped to coordinate model [i](#)



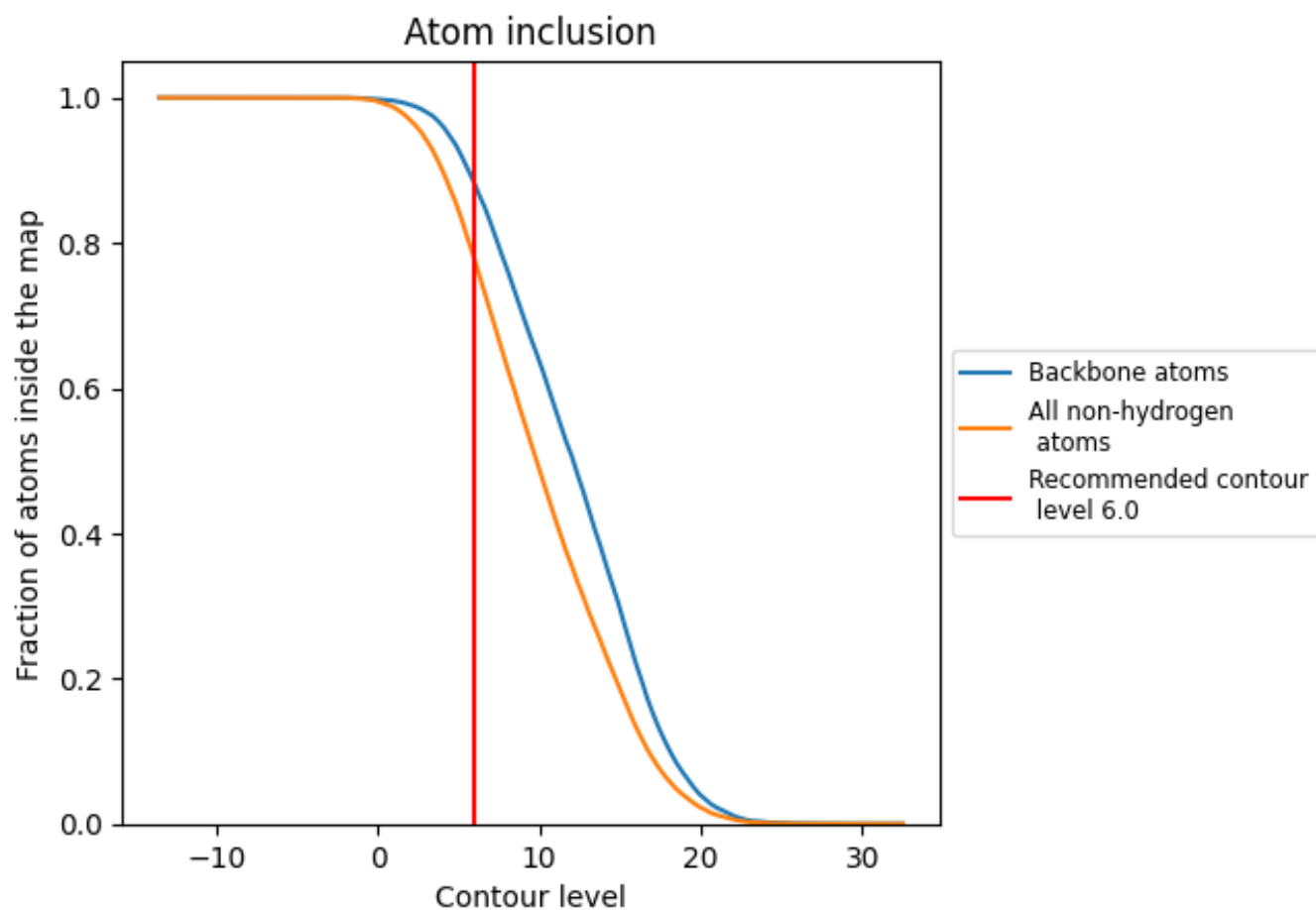
The images above show the model with each residue coloured according to its Q-score. This shows their resolvability in the map with higher Q-score values reflecting better resolvability. Please note: Q-score is calculating the resolvability of atoms, and thus high values are only expected at resolutions at which atoms can be resolved. Low Q-score values may therefore be expected for many entries.

9.3 Atom inclusion mapped to coordinate model [i](#)



The images above show the model with each residue coloured according to its atom inclusion. This shows to what extent they are inside the map at the recommended contour level (6.0).

















9.4 Atom inclusion [i](#)



At the recommended contour level, 88% of all backbone atoms, 78% of all non-hydrogen atoms, are inside the map.

9.5 Map-model fit summary

The table lists the average atom inclusion at the recommended contour level (6.0) and Q-score for the entire model and for each chain.

Chain	Atom inclusion	Q-score
All	 0.7767	 0.4190
C	 0.7397	 0.3500
D	 0.8224	 0.4420
E	 0.7839	 0.4350
F	 0.8159	 0.4380
G	 0.7256	 0.3920
H	 0.7320	 0.4050
I	 0.8269	 0.4320

