



# Full wwPDB X-ray Structure Validation Report ⓘ

Oct 22, 2023 – 07:20 PM EDT

PDB ID : 3GKW  
Title : Crystal structure of the Fab fragment of Nimotuzumab. An anti-epidermal growth factor receptor antibody  
Authors : Talavera, A.; Friemann, R.; Martinez-Fleites, C.; Moreno, E.; Krenzel, U.  
Deposited on : 2009-03-11  
Resolution : 2.50 Å(reported)

This is a Full wwPDB X-ray Structure Validation Report for a publicly released PDB entry.

We welcome your comments at [validation@mail.wwpdb.org](mailto:validation@mail.wwpdb.org)

A user guide is available at

<https://www.wwpdb.org/validation/2017/XrayValidationReportHelp>

with specific help available everywhere you see the ⓘ symbol.

The types of validation reports are described at

<http://www.wwpdb.org/validation/2017/FAQs#types>.

---

The following versions of software and data (see [references ⓘ](#)) were used in the production of this report:

MolProbity : 4.02b-467  
Mogul : 1.8.5 (274361), CSD as541be (2020)  
Xtriage (Phenix) : 1.13  
EDS : 2.36  
Percentile statistics : 20191225.v01 (using entries in the PDB archive December 25th 2019)  
Refmac : 5.8.0158  
CCP4 : 7.0.044 (Gargrove)  
Ideal geometry (proteins) : Engh & Huber (2001)  
Ideal geometry (DNA, RNA) : Parkinson et al. (1996)  
Validation Pipeline (wwPDB-VP) : 2.36

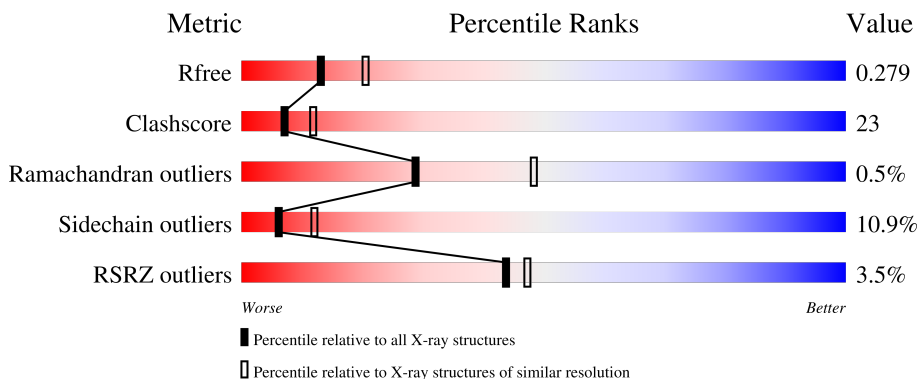
# 1 Overall quality at a glance

The following experimental techniques were used to determine the structure:

*X-RAY DIFFRACTION*

The reported resolution of this entry is 2.50 Å.

Percentile scores (ranging between 0-100) for global validation metrics of the entry are shown in the following graphic. The table shows the number of entries on which the scores are based.



Metric	Whole archive (#Entries)	Similar resolution (#Entries, resolution range(Å))
$R_{free}$	130704	4661 (2.50-2.50)
Clashscore	141614	5346 (2.50-2.50)
Ramachandran outliers	138981	5231 (2.50-2.50)
Sidechain outliers	138945	5233 (2.50-2.50)
RSRZ outliers	127900	4559 (2.50-2.50)

The table below summarises the geometric issues observed across the polymeric chains and their fit to the electron density. The red, orange, yellow and green segments of the lower bar indicate the fraction of residues that contain outliers for  $\geq 3$ , 2, 1 and 0 types of geometric quality criteria respectively. A grey segment represents the fraction of residues that are not modelled. The numeric value for each fraction is indicated below the corresponding segment, with a dot representing fractions  $\leq 5\%$ . The upper red bar (where present) indicates the fraction of residues that have poor fit to the electron density. The numeric value is given above the bar.

Mol	Chain	Length	Quality of chain
1	H	222	
2	L	219	

The following table lists non-polymeric compounds, carbohydrate monomers and non-standard residues in protein, DNA, RNA chains that are outliers for geometric or electron-density-fit criteria:

Mol	Type	Chain	Res	Chirality	Geometry	Clashes	Electron density
3	PEG	H	5072	-	-	X	-

## 2 Entry composition [i](#)

There are 5 unique types of molecules in this entry. The entry contains 3284 atoms, of which 0 are hydrogens and 0 are deuteriums.

In the tables below, the ZeroOcc column contains the number of atoms modelled with zero occupancy, the AltConf column contains the number of residues with at least one atom in alternate conformation and the Trace column contains the number of residues modelled with at most 2 atoms.

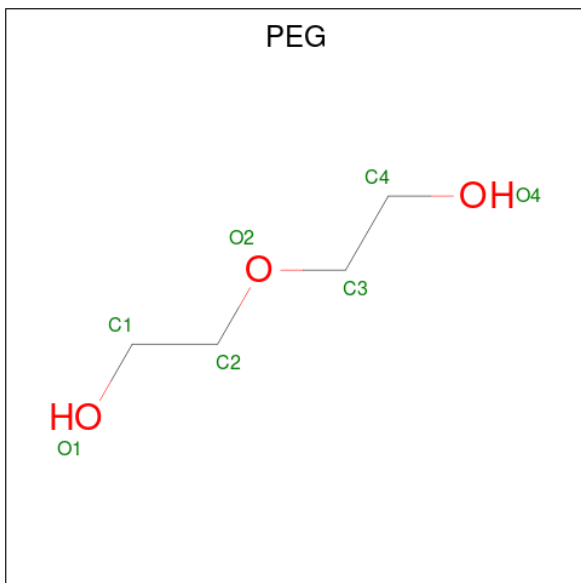
- Molecule 1 is a protein called Heavy chain of the antibody Nimotuzumab.

Mol	Chain	Residues	Atoms					ZeroOcc	AltConf	Trace
			Total	C	N	O	S			
1	H	202	1538	979	253	301	5	0	0	0

- Molecule 2 is a protein called Light chain of the antibody Nimotuzumab.

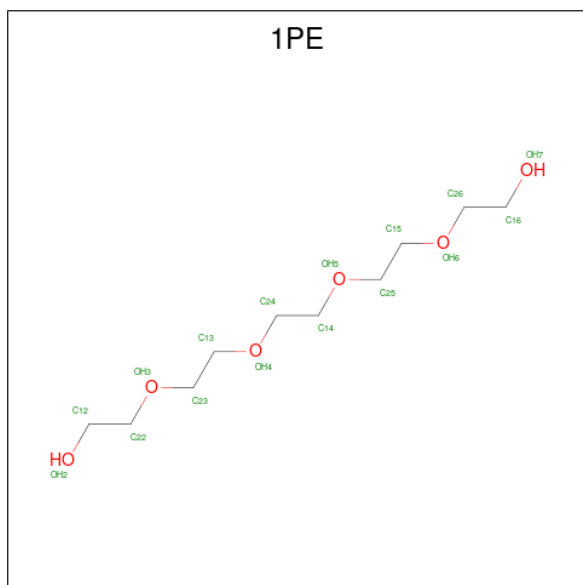
Mol	Chain	Residues	Atoms					ZeroOcc	AltConf	Trace
			Total	C	N	O	S			
2	L	199	1540	965	257	313	5	0	0	0

- Molecule 3 is DI(HYDROXYETHYL)ETHER (three-letter code: PEG) (formula: C<sub>4</sub>H<sub>10</sub>O<sub>3</sub>).



Mol	Chain	Residues	Atoms			ZeroOcc	AltConf
			Total	C	O		
3	H	1	7	4	3	0	0

- Molecule 4 is PENTAETHYLENE GLYCOL (three-letter code: 1PE) (formula: C<sub>10</sub>H<sub>22</sub>O<sub>6</sub>).



Mol	Chain	Residues	Atoms		ZeroOcc	AltConf
4	L	1	Total	C O	0	0
			16	10 6		

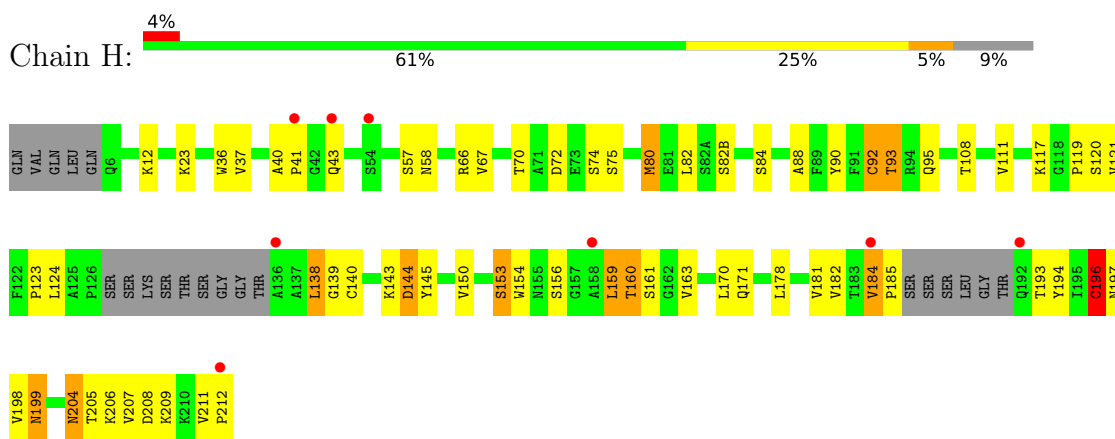
- Molecule 5 is water.

Mol	Chain	Residues	Atoms		ZeroOcc	AltConf
5	H	86	Total	O	0	0
			86	86		
5	L	97	Total	O	0	0
			97	97		

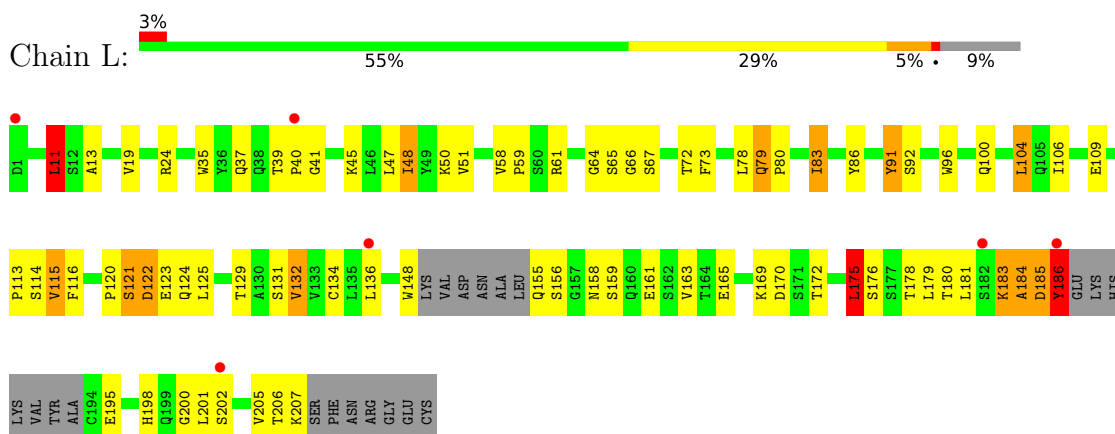
### 3 Residue-property plots [i](#)

These plots are drawn for all protein, RNA, DNA and oligosaccharide chains in the entry. The first graphic for a chain summarises the proportions of the various outlier classes displayed in the second graphic. The second graphic shows the sequence view annotated by issues in geometry and electron density. Residues are color-coded according to the number of geometric quality criteria for which they contain at least one outlier: green = 0, yellow = 1, orange = 2 and red = 3 or more. A red dot above a residue indicates a poor fit to the electron density ( $RSRZ > 2$ ). Stretches of 2 or more consecutive residues without any outlier are shown as a green connector. Residues present in the sample, but not in the model, are shown in grey.

- Molecule 1: Heavy chain of the antibody Nimotuzumab



- Molecule 2: Light chain of the antibody Nimotuzumab



## 4 Data and refinement statistics

Property	Value	Source
Space group	P 43 21 2	Depositor
Cell constants a, b, c, $\alpha$ , $\beta$ , $\gamma$	84.22Å 84.22Å 138.53Å 90.00° 90.00° 90.00°	Depositor
Resolution (Å)	19.79 – 2.50 19.72 – 2.50	Depositor EDS
% Data completeness (in resolution range)	98.0 (19.79-2.50) 98.2 (19.72-2.50)	Depositor EDS
$R_{merge}$	0.12	Depositor
$R_{sym}$	(Not available)	Depositor
$\langle I/\sigma(I) \rangle$ <sup>1</sup>	3.18 (at 2.50Å)	Xtrriage
Refinement program	REFMAC 5.5.0066	Depositor
R, $R_{free}$	0.214 , 0.284 0.209 , 0.279	Depositor DCC
$R_{free}$ test set	890 reflections (5.07%)	wwPDB-VP
Wilson B-factor (Å <sup>2</sup> )	26.0	Xtrriage
Anisotropy	0.049	Xtrriage
Bulk solvent $k_{sol}$ (e/Å <sup>3</sup> ), $B_{sol}$ (Å <sup>2</sup> )	0.33 , 46.5	EDS
L-test for twinning <sup>2</sup>	$\langle  L  \rangle = 0.48$ , $\langle L^2 \rangle = 0.32$	Xtrriage
Estimated twinning fraction	No twinning to report.	Xtrriage
$F_o, F_c$ correlation	0.92	EDS
Total number of atoms	3284	wwPDB-VP
Average B, all atoms (Å <sup>2</sup> )	15.0	wwPDB-VP

Xtrriage's analysis on translational NCS is as follows: *The largest off-origin peak in the Patterson function is 3.57% of the height of the origin peak. No significant pseudotranslation is detected.*

<sup>1</sup>Intensities estimated from amplitudes.

<sup>2</sup>Theoretical values of  $\langle |L| \rangle$ ,  $\langle L^2 \rangle$  for acentric reflections are 0.5, 0.333 respectively for untwinned datasets, and 0.375, 0.2 for perfectly twinned datasets.

## 5 Model quality [i](#)

### 5.1 Standard geometry [i](#)

Bond lengths and bond angles in the following residue types are not validated in this section: PEG, 1PE

The Z score for a bond length (or angle) is the number of standard deviations the observed value is removed from the expected value. A bond length (or angle) with  $|Z| > 5$  is considered an outlier worth inspection. RMSZ is the root-mean-square of all Z scores of the bond lengths (or angles).

Mol	Chain	Bond lengths		Bond angles	
		RMSZ	# $ Z  > 5$	RMSZ	# $ Z  > 5$
1	H	0.81	2/1579 (0.1%)	0.81	0/2148
2	L	0.70	0/1575	0.91	8/2141 (0.4%)
All	All	0.76	2/3154 (0.1%)	0.86	8/4289 (0.2%)

All (2) bond length outliers are listed below:

Mol	Chain	Res	Type	Atoms	Z	Observed(Å)	Ideal(Å)
1	H	196	CYS	CB-SG	-7.15	1.70	1.82
1	H	92	CYS	CB-SG	-5.19	1.73	1.81

All (8) bond angle outliers are listed below:

Mol	Chain	Res	Type	Atoms	Z	Observed(°)	Ideal(°)
2	L	186	TYR	N-CA-CB	-11.28	90.31	110.60
2	L	185	ASP	N-CA-C	10.54	139.45	111.00
2	L	185	ASP	CB-CA-C	-7.23	95.93	110.40
2	L	11	LEU	CA-CB-CG	5.75	128.53	115.30
2	L	104	LEU	CB-CG-CD1	-5.67	101.36	111.00
2	L	186	TYR	N-CA-C	5.59	126.09	111.00
2	L	104	LEU	CA-CB-CG	-5.52	102.61	115.30
2	L	175	LEU	CA-CB-CG	5.45	127.83	115.30

There are no chirality outliers.

There are no planarity outliers.

### 5.2 Too-close contacts [i](#)

In the following table, the Non-H and H(model) columns list the number of non-hydrogen atoms and hydrogen atoms in the chain respectively. The H(added) column lists the number of hydrogen



atoms added and optimized by MolProbity. The Clashes column lists the number of clashes within the asymmetric unit, whereas Symm-Clashes lists symmetry-related clashes.

Mol	Chain	Non-H	H(model)	H(added)	Clashes	Symm-Clashes
1	H	1538	0	1479	54	0
2	L	1540	0	1476	83	0
3	H	7	0	10	4	0
4	L	16	0	22	1	0
5	H	86	0	0	5	0
5	L	97	0	0	7	0
All	All	3284	0	2987	138	0

The all-atom clashscore is defined as the number of clashes found per 1000 atoms (including hydrogen atoms). The all-atom clashscore for this structure is 23.

All (138) close contacts within the same asymmetric unit are listed below, sorted by their clash magnitude.

Atom-1	Atom-2	Interatomic distance (Å)	Clash overlap (Å)
2:L:183:LYS:O	2:L:183:LYS:HD3	1.30	1.25
2:L:121:SER:O	2:L:125:LEU:HD22	1.42	1.18
2:L:122:ASP:OD1	2:L:123:GLU:HG3	1.42	1.18
2:L:184:ALA:HA	2:L:185:ASP:HB2	1.16	1.13
2:L:39:THR:HG23	2:L:40:PRO:HD2	1.19	1.11
2:L:183:LYS:HA	2:L:184:ALA:HB2	1.18	1.10
2:L:184:ALA:HB1	2:L:186:TYR:H	1.12	1.10
2:L:184:ALA:CB	2:L:186:TYR:H	1.72	1.02
2:L:186:TYR:C	2:L:186:TYR:CD1	2.30	1.02
2:L:115:VAL:HG22	2:L:207:LYS:HG3	1.38	1.02
2:L:184:ALA:HA	2:L:185:ASP:CB	1.91	1.01
2:L:109:GLU:HG2	5:L:248:HOH:O	1.59	1.00
2:L:120:PRO:HD2	2:L:186:TYR:CE1	1.97	0.99
2:L:184:ALA:HB1	2:L:186:TYR:N	1.77	0.98
2:L:186:TYR:C	2:L:186:TYR:HD1	1.62	0.98
2:L:183:LYS:O	2:L:183:LYS:CD	2.10	0.98
1:H:121:VAL:HG21	1:H:207:VAL:HG21	1.43	0.97
2:L:183:LYS:CA	2:L:184:ALA:HB2	1.97	0.93
2:L:39:THR:CG2	2:L:40:PRO:HD2	1.98	0.93
2:L:121:SER:O	2:L:125:LEU:CD2	2.18	0.90
2:L:39:THR:HG23	2:L:40:PRO:CD	2.01	0.90
2:L:184:ALA:CA	2:L:185:ASP:HB2	2.02	0.89
2:L:122:ASP:OD1	2:L:123:GLU:CG	2.24	0.85
2:L:115:VAL:CG2	2:L:207:LYS:HG3	2.08	0.83
1:H:41:PRO:HG3	3:H:5072:PEG:H11	1.66	0.78

*Continued on next page...*

*Continued from previous page...*

Atom-1	Atom-2	Interatomic distance (Å)	Clash overlap (Å)
1:H:108:THR:HG23	3:H:5072:PEG:H21	1.67	0.76
2:L:186:TYR:CD1	2:L:186:TYR:O	2.38	0.75
2:L:39:THR:CG2	2:L:40:PRO:CD	2.63	0.72
2:L:132:VAL:HG13	2:L:179:LEU:HB3	1.70	0.72
1:H:196:CYS:O	1:H:208:ASP:HA	1.88	0.72
2:L:183:LYS:HA	2:L:184:ALA:CB	1.99	0.72
2:L:198:HIS:CD2	2:L:200:GLY:H	2.08	0.70
2:L:175:LEU:HD13	2:L:176:SER:N	2.07	0.69
2:L:165:GLU:OE1	5:L:240:HOH:O	2.10	0.68
1:H:138:LEU:HD22	1:H:138:LEU:C	2.14	0.68
2:L:155:GLN:HA	5:L:299:HOH:O	1.93	0.67
2:L:115:VAL:HG22	2:L:207:LYS:CG	2.23	0.65
2:L:170:ASP:HB3	2:L:172:THR:HG23	1.80	0.63
2:L:39:THR:HG22	2:L:40:PRO:N	2.12	0.63
2:L:124:GLN:HE22	2:L:131:SER:HB2	1.62	0.63
2:L:39:THR:CG2	2:L:40:PRO:N	2.62	0.62
2:L:39:THR:HG22	2:L:40:PRO:O	2.00	0.61
2:L:163:VAL:HG22	2:L:175:LEU:HD23	1.83	0.61
1:H:184:VAL:HB	1:H:185:PRO:HD2	1.83	0.60
1:H:41:PRO:HG3	3:H:5072:PEG:C1	2.31	0.60
1:H:163:VAL:HG22	1:H:182:VAL:HG22	1.83	0.60
1:H:37:VAL:HG23	1:H:93:THR:HG21	1.84	0.60
1:H:163:VAL:HG22	1:H:182:VAL:CG2	2.32	0.60
1:H:138:LEU:C	1:H:138:LEU:CD2	2.71	0.59
4:L:5072:1PE:H122	5:L:216:HOH:O	2.01	0.59
2:L:183:LYS:CA	2:L:184:ALA:CB	2.70	0.58
2:L:120:PRO:CD	2:L:186:TYR:CE1	2.82	0.58
1:H:178:LEU:C	1:H:178:LEU:HD12	2.24	0.58
1:H:159:LEU:HD22	1:H:160:THR:H	1.69	0.57
2:L:183:LYS:HD3	2:L:183:LYS:C	2.19	0.56
2:L:201:LEU:HD13	2:L:205:VAL:HG22	1.88	0.56
2:L:183:LYS:CD	2:L:183:LYS:C	2.75	0.55
1:H:163:VAL:HA	1:H:182:VAL:HG22	1.88	0.54
1:H:198:VAL:HB	1:H:207:VAL:HG22	1.89	0.54
2:L:64:GLY:HA2	2:L:72:THR:O	2.07	0.54
2:L:24:ARG:HD3	5:L:274:HOH:O	2.08	0.54
2:L:47:LEU:O	2:L:48:ILE:HD12	2.09	0.53
2:L:198:HIS:HD2	2:L:200:GLY:H	1.53	0.53
2:L:184:ALA:HB1	2:L:186:TYR:CB	2.39	0.53
1:H:207:VAL:O	1:H:208:ASP:OD1	2.27	0.53
2:L:184:ALA:CA	2:L:185:ASP:CB	2.72	0.52

*Continued on next page...*

*Continued from previous page...*

Atom-1	Atom-2	Interatomic distance (Å)	Clash overlap (Å)
2:L:83:ILE:HG23	2:L:83:ILE:O	2.09	0.52
2:L:161:GLU:HA	2:L:176:SER:O	2.09	0.52
2:L:184:ALA:HB1	2:L:186:TYR:HB3	1.91	0.52
2:L:180:THR:O	2:L:181:LEU:HD23	2.10	0.52
1:H:117:LYS:HD3	1:H:144:ASP:O	2.10	0.51
1:H:72:ASP:OD2	1:H:75:SER:OG	2.15	0.51
1:H:119:PRO:HB3	1:H:145:TYR:HB3	1.93	0.51
1:H:160:THR:HG22	1:H:161:SER:N	2.26	0.51
2:L:175:LEU:HD13	2:L:175:LEU:C	2.30	0.51
1:H:123:PRO:HD2	2:L:121:SER:OG	2.11	0.51
2:L:195:GLU:HG3	2:L:206:THR:OG1	2.11	0.51
3:H:5072:PEG:H41	5:H:285:HOH:O	2.10	0.50
2:L:13:ALA:O	2:L:106:ILE:HA	2.11	0.50
1:H:95:GLN:OE1	5:H:228:HOH:O	2.20	0.50
1:H:199:ASN:HB2	1:H:205:THR:O	2.11	0.50
1:H:37:VAL:CG2	1:H:93:THR:HG21	2.41	0.50
1:H:181:VAL:O	1:H:182:VAL:CG2	2.61	0.49
1:H:204:ASN:HA	5:H:254:HOH:O	2.11	0.48
1:H:159:LEU:HD22	1:H:160:THR:N	2.29	0.48
1:H:36:TRP:CE2	1:H:80:MET:HB2	2.49	0.47
2:L:207:LYS:O	5:L:290:HOH:O	2.20	0.47
2:L:158:ASN:ND2	2:L:179:LEU:HD11	2.29	0.47
2:L:163:VAL:HG22	2:L:175:LEU:CD2	2.44	0.47
2:L:11:LEU:C	2:L:11:LEU:HD22	2.35	0.47
1:H:143:LYS:HE2	1:H:171:GLN:OE1	2.15	0.47
2:L:122:ASP:OD1	2:L:123:GLU:N	2.41	0.47
1:H:23:LYS:HB3	1:H:23:LYS:HE3	1.66	0.46
2:L:61:ARG:CZ	2:L:79:GLN:HG3	2.45	0.46
1:H:40:ALA:HB3	1:H:43:GLN:HG3	1.98	0.46
2:L:159:SER:HA	2:L:178:THR:O	2.15	0.46
2:L:58:VAL:HA	2:L:59:PRO:HD3	1.82	0.46
2:L:134:CYS:HB2	2:L:148:TRP:CH2	2.50	0.46
1:H:139:GLY:HA2	1:H:154:TRP:CZ2	2.51	0.46
2:L:114:SER:HA	5:L:311:HOH:O	2.16	0.46
1:H:138:LEU:HD22	1:H:138:LEU:O	2.16	0.46
1:H:153:SER:HB2	1:H:197:ASN:HB2	1.97	0.46
1:H:184:VAL:HB	1:H:185:PRO:CD	2.46	0.46
2:L:181:LEU:HD23	2:L:181:LEU:HA	1.80	0.46
1:H:37:VAL:HG23	1:H:93:THR:CG2	2.46	0.45
1:H:88:ALA:HB3	1:H:90:TYR:CE1	2.51	0.45
2:L:50:LYS:O	2:L:51:VAL:HB	2.15	0.45

*Continued on next page...*

Continued from previous page...

Atom-1	Atom-2	Interatomic distance (Å)	Clash overlap (Å)
1:H:82(B):SER:HB3	5:H:269:HOH:O	2.15	0.45
1:H:181:VAL:C	1:H:182:VAL:HG23	2.37	0.45
1:H:143:LYS:O	1:H:144:ASP:HB2	2.16	0.45
1:H:184:VAL:HG11	1:H:194:TYR:OH	2.17	0.44
1:H:211:VAL:HA	1:H:212:PRO:HD3	1.66	0.44
1:H:199:ASN:HB3	1:H:206:LYS:HA	2.00	0.44
2:L:66:GLY:O	2:L:67:SER:HB3	2.18	0.44
2:L:113:PRO:O	2:L:113:PRO:HG2	2.18	0.44
2:L:124:GLN:HE22	2:L:131:SER:CB	2.30	0.44
2:L:175:LEU:C	2:L:175:LEU:CD1	2.85	0.44
1:H:145:TYR:CE2	1:H:150:VAL:HG13	2.53	0.44
2:L:40:PRO:HA	2:L:41:GLY:HA2	1.82	0.44
2:L:136:LEU:HD12	2:L:136:LEU:N	2.33	0.43
1:H:124:LEU:HD12	1:H:140:CYS:N	2.34	0.43
2:L:11:LEU:C	2:L:11:LEU:CD2	2.87	0.43
1:H:67:VAL:CG2	1:H:82:LEU:HD13	2.49	0.43
1:H:139:GLY:HA2	1:H:154:TRP:CH2	2.54	0.42
1:H:12:LYS:O	1:H:111:VAL:HA	2.18	0.42
1:H:205:THR:HG22	1:H:207:VAL:HG13	2.01	0.42
2:L:116:PHE:CD2	2:L:116:PHE:N	2.88	0.42
1:H:143:LYS:HG2	1:H:144:ASP:OD1	2.20	0.42
2:L:169:LYS:HE2	2:L:169:LYS:HB2	1.88	0.41
2:L:79:GLN:HB3	2:L:80:PRO:CD	2.51	0.41
1:H:156:SER:HA	1:H:197:ASN:OD1	2.21	0.41
1:H:57:SER:O	1:H:58:ASN:OD1	2.38	0.41
2:L:37:GLN:HG3	2:L:86:TYR:CE2	2.56	0.41
1:H:159:LEU:HD23	1:H:159:LEU:HA	1.80	0.41
1:H:70:THR:HG22	5:H:260:HOH:O	2.20	0.40
2:L:35:TRP:CE2	2:L:73:PHE:HB2	2.56	0.40
2:L:91:TYR:HA	2:L:96:TRP:CD1	2.57	0.40
2:L:19:VAL:HG21	2:L:78:LEU:HD13	2.03	0.40

There are no symmetry-related clashes.

## 5.3 Torsion angles

### 5.3.1 Protein backbone

In the following table, the Percentiles column shows the percent Ramachandran outliers of the chain as a percentile score with respect to all X-ray entries followed by that with respect to entries of similar resolution.

The Analysed column shows the number of residues for which the backbone conformation was analysed, and the total number of residues.

Mol	Chain	Analysed	Favoured	Allowed	Outliers	Percentiles	
1	H	196/222 (88%)	186 (95%)	9 (5%)	1 (0%)	29	48
2	L	193/219 (88%)	181 (94%)	11 (6%)	1 (0%)	29	48
All	All	389/441 (88%)	367 (94%)	20 (5%)	2 (0%)	29	48

All (2) Ramachandran outliers are listed below:

Mol	Chain	Res	Type
2	L	184	ALA
1	H	144	ASP

### 5.3.2 Protein sidechains [i](#)

In the following table, the Percentiles column shows the percent sidechain outliers of the chain as a percentile score with respect to all X-ray entries followed by that with respect to entries of similar resolution.

The Analysed column shows the number of residues for which the sidechain conformation was analysed, and the total number of residues.

Mol	Chain	Analysed	Rotameric	Outliers	Percentiles	
1	H	171/188 (91%)	153 (90%)	18 (10%)	7	13
2	L	179/196 (91%)	159 (89%)	20 (11%)	6	11
All	All	350/384 (91%)	312 (89%)	38 (11%)	6	12

All (38) residues with a non-rotameric sidechain are listed below:

Mol	Chain	Res	Type
1	H	66	ARG
1	H	74	SER
1	H	80	MET
1	H	84	SER
1	H	92	CYS
1	H	93	THR
1	H	120	SER
1	H	138	LEU
1	H	153	SER
1	H	159	LEU
1	H	160	THR

*Continued on next page...*

*Continued from previous page...*

<b>Mol</b>	<b>Chain</b>	<b>Res</b>	<b>Type</b>
1	H	170	LEU
1	H	184	VAL
1	H	193	THR
1	H	196	CYS
1	H	199	ASN
1	H	204	ASN
1	H	209	LYS
2	L	11	LEU
2	L	45	LYS
2	L	48	ILE
2	L	65	SER
2	L	79	GLN
2	L	83	ILE
2	L	91	TYR
2	L	92	SER
2	L	100	GLN
2	L	104	LEU
2	L	115	VAL
2	L	121	SER
2	L	122	ASP
2	L	129	THR
2	L	132	VAL
2	L	156	SER
2	L	175	LEU
2	L	183	LYS
2	L	186	TYR
2	L	202	SER

Sometimes sidechains can be flipped to improve hydrogen bonding and reduce clashes. All (7) such sidechains are listed below:

<b>Mol</b>	<b>Chain</b>	<b>Res</b>	<b>Type</b>
1	H	204	ASN
2	L	37	GLN
2	L	79	GLN
2	L	100	GLN
2	L	124	GLN
2	L	198	HIS
2	L	199	GLN

### 5.3.3 RNA [i](#)

There are no RNA molecules in this entry.

## 5.4 Non-standard residues in protein, DNA, RNA chains [i](#)

There are no non-standard protein/DNA/RNA residues in this entry.

## 5.5 Carbohydrates [i](#)

There are no monosaccharides in this entry.

## 5.6 Ligand geometry [i](#)

2 ligands are modelled in this entry.

In the following table, the Counts columns list the number of bonds (or angles) for which Mogul statistics could be retrieved, the number of bonds (or angles) that are observed in the model and the number of bonds (or angles) that are defined in the Chemical Component Dictionary. The Link column lists molecule types, if any, to which the group is linked. The Z score for a bond length (or angle) is the number of standard deviations the observed value is removed from the expected value. A bond length (or angle) with  $|Z| > 2$  is considered an outlier worth inspection. RMSZ is the root-mean-square of all Z scores of the bond lengths (or angles).

Mol	Type	Chain	Res	Link	Bond lengths			Bond angles		
					Counts	RMSZ	# Z  > 2	Counts	RMSZ	# Z  > 2
4	1PE	L	5072	-	15,15,15	0.37	0	14,14,14	0.57	0
3	PEG	H	5072	-	6,6,6	0.51	0	5,5,5	0.48	0

In the following table, the Chirals column lists the number of chiral outliers, the number of chiral centers analysed, the number of these observed in the model and the number defined in the Chemical Component Dictionary. Similar counts are reported in the Torsion and Rings columns. '-' means no outliers of that kind were identified.

Mol	Type	Chain	Res	Link	Chirals	Torsions	Rings
4	1PE	L	5072	-	-	5/13/13/13	-
3	PEG	H	5072	-	-	4/4/4/4	-

There are no bond length outliers.

There are no bond angle outliers.

There are no chirality outliers.

All (9) torsion outliers are listed below:

Mol	Chain	Res	Type	Atoms
4	L	5072	1PE	OH7-C16-C26-OH6
3	H	5072	PEG	O1-C1-C2-O2
3	H	5072	PEG	O2-C3-C4-O4
4	L	5072	1PE	C16-C26-OH6-C15
4	L	5072	1PE	C25-C15-OH6-C26
4	L	5072	1PE	C12-C22-OH3-C23
4	L	5072	1PE	C15-C25-OH5-C14
3	H	5072	PEG	C4-C3-O2-C2
3	H	5072	PEG	C1-C2-O2-C3

There are no ring outliers.

2 monomers are involved in 5 short contacts:

Mol	Chain	Res	Type	Clashes	Symm-Clashes
4	L	5072	1PE	1	0
3	H	5072	PEG	4	0

## 5.7 Other polymers [i](#)

There are no such residues in this entry.

## 5.8 Polymer linkage issues [i](#)

There are no chain breaks in this entry.



## 6 Fit of model and data [i](#)

### 6.1 Protein, DNA and RNA chains [i](#)

In the following table, the column labelled ‘#RSRZ > 2’ contains the number (and percentage) of RSRZ outliers, followed by percent RSRZ outliers for the chain as percentile scores relative to all X-ray entries and entries of similar resolution. The OWAB column contains the minimum, median, 95<sup>th</sup> percentile and maximum values of the occupancy-weighted average B-factor per residue. The column labelled ‘Q < 0.9’ lists the number of (and percentage) of residues with an average occupancy less than 0.9.

Mol	Chain	Analysed	<RSRZ>	#RSRZ>2	OWAB(Å <sup>2</sup> )	Q<0.9
1	H	202/222 (90%)	-0.07	8 (3%) 38 41	5, 13, 28, 36	0
2	L	199/219 (90%)	0.01	6 (3%) 50 53	4, 13, 28, 36	1 (0%)
All	All	401/441 (90%)	-0.03	14 (3%) 44 47	4, 13, 28, 36	1 (0%)

All (14) RSRZ outliers are listed below:

Mol	Chain	Res	Type	RSRZ
1	H	212	PRO	4.4
2	L	186	TYR	3.6
2	L	40	PRO	3.6
2	L	202	SER	3.3
1	H	136	ALA	2.9
1	H	184	VAL	2.8
1	H	43	GLN	2.7
2	L	136	LEU	2.7
1	H	192	GLN	2.4
2	L	1	ASP	2.2
1	H	41	PRO	2.2
1	H	158	ALA	2.2
2	L	182	SER	2.2
1	H	54	SER	2.1

### 6.2 Non-standard residues in protein, DNA, RNA chains [i](#)

There are no non-standard protein/DNA/RNA residues in this entry.

### 6.3 Carbohydrates [i](#)

There are no monosaccharides in this entry.

## 6.4 Ligands [i](#)

In the following table, the Atoms column lists the number of modelled atoms in the group and the number defined in the chemical component dictionary. The B-factors column lists the minimum, median, 95<sup>th</sup> percentile and maximum values of B factors of atoms in the group. The column labelled 'Q< 0.9' lists the number of atoms with occupancy less than 0.9.

Mol	Type	Chain	Res	Atoms	RSCC	RSR	B-factors( $\text{\AA}^2$ )	Q<0.9
3	PEG	H	5072	7/7	0.84	0.24	38,42,44,45	0
4	1PE	L	5072	16/16	0.96	0.11	18,21,26,28	0

## 6.5 Other polymers [i](#)

There are no such residues in this entry.