



# Full wwPDB X-ray Structure Validation Report ⓘ

Sep 7, 2023 – 01:34 AM EDT

PDB ID : 4GKZ  
Title : HA1.7, a MHC class II restricted TCR specific for haemagglutinin  
Authors : Holland, C.J.; Rizkallah, P.J.; Cole, D.K.; Sewell, A.K.; Godkin, A.J.  
Deposited on : 2012-08-13  
Resolution : 2.39 Å(reported)

This is a Full wwPDB X-ray Structure Validation Report for a publicly released PDB entry.

We welcome your comments at [validation@mail.wwpdb.org](mailto:validation@mail.wwpdb.org)

A user guide is available at

<https://www.wwpdb.org/validation/2017/XrayValidationReportHelp>

with specific help available everywhere you see the ⓘ symbol.

The types of validation reports are described at

<http://www.wwpdb.org/validation/2017/FAQs#types>.

---

The following versions of software and data (see [references ⓘ](#)) were used in the production of this report:

MolProbity : 4.02b-467  
Mogul : 1.8.5 (274361), CSD as541be (2020)  
Xtrriage (Phenix) : 1.13  
EDS : 2.35  
Percentile statistics : 20191225.v01 (using entries in the PDB archive December 25th 2019)  
Refmac : 5.8.0158  
CCP4 : 7.0.044 (Gargrove)  
Ideal geometry (proteins) : Engh & Huber (2001)  
Ideal geometry (DNA, RNA) : Parkinson et al. (1996)  
Validation Pipeline (wwPDB-VP) : 2.35

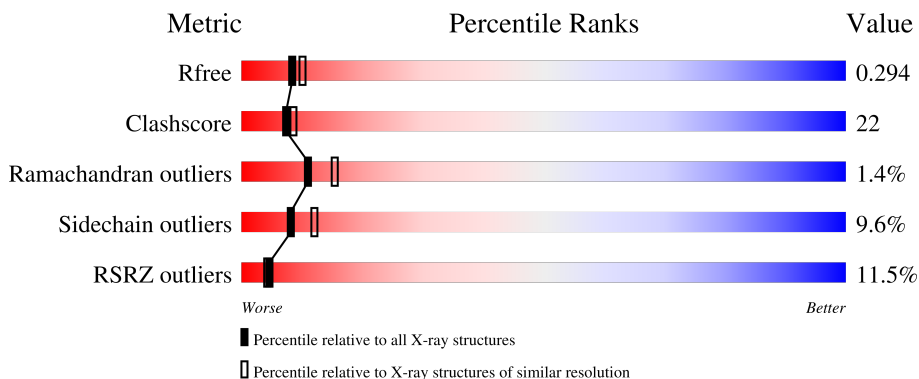
# 1 Overall quality at a glance

The following experimental techniques were used to determine the structure:

*X-RAY DIFFRACTION*

The reported resolution of this entry is 2.39 Å.

Percentile scores (ranging between 0-100) for global validation metrics of the entry are shown in the following graphic. The table shows the number of entries on which the scores are based.



Metric	Whole archive (#Entries)	Similar resolution (#Entries, resolution range(Å))
$R_{free}$	130704	3907 (2.40-2.40)
Clashscore	141614	4398 (2.40-2.40)
Ramachandran outliers	138981	4318 (2.40-2.40)
Sidechain outliers	138945	4319 (2.40-2.40)
RSRZ outliers	127900	3811 (2.40-2.40)

The table below summarises the geometric issues observed across the polymeric chains and their fit to the electron density. The red, orange, yellow and green segments of the lower bar indicate the fraction of residues that contain outliers for  $\geq 3$ , 2, 1 and 0 types of geometric quality criteria respectively. A grey segment represents the fraction of residues that are not modelled. The numeric value for each fraction is indicated below the corresponding segment, with a dot representing fractions  $\leq 5\%$ . The upper red bar (where present) indicates the fraction of residues that have poor fit to the electron density. The numeric value is given above the bar.

Mol	Chain	Length	Quality of chain
1	A	202	
2	B	241	

The following table lists non-polymeric compounds, carbohydrate monomers and non-standard residues in protein, DNA, RNA chains that are outliers for geometric or electron-density-fit criteria:

Mol	Type	Chain	Res	Chirality	Geometry	Clashes	Electron density
3	EDO	A	302	-	-	X	-
3	EDO	A	303	-	-	X	X
3	EDO	B	301	-	-	X	X
4	SO4	A	305	-	-	X	-

## 2 Entry composition [i](#)

There are 6 unique types of molecules in this entry. The entry contains 3626 atoms, of which 0 are hydrogens and 0 are deuteriums.

In the tables below, the ZeroOcc column contains the number of atoms modelled with zero occupancy, the AltConf column contains the number of residues with at least one atom in alternate conformation and the Trace column contains the number of residues modelled with at most 2 atoms.

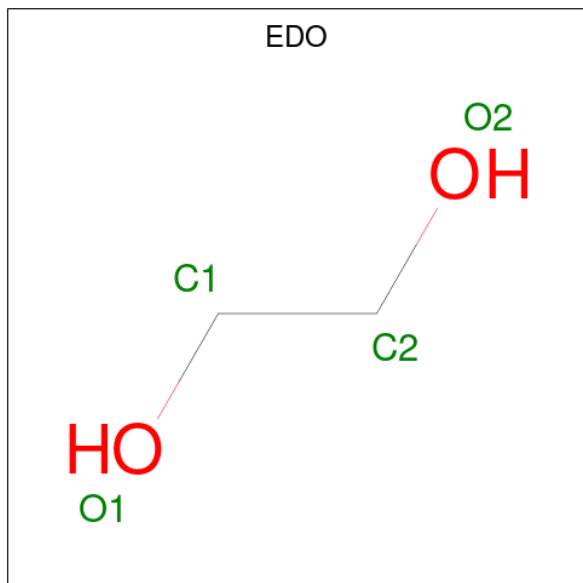
- Molecule 1 is a protein called Alpha chain of Class II TCR.

Mol	Chain	Residues	Atoms					ZeroOcc	AltConf	Trace
			Total	C	N	O	S			
1	A	202	1594	1008	263	314	9	0	3	0

- Molecule 2 is a protein called Beta Chain of Class II TCR.

Mol	Chain	Residues	Atoms					ZeroOcc	AltConf	Trace
			Total	C	N	O	S			
2	B	241	1938	1227	332	370	9	0	0	0

- Molecule 3 is 1,2-ETHANEDIOL (three-letter code: EDO) (formula: C<sub>2</sub>H<sub>6</sub>O<sub>2</sub>).



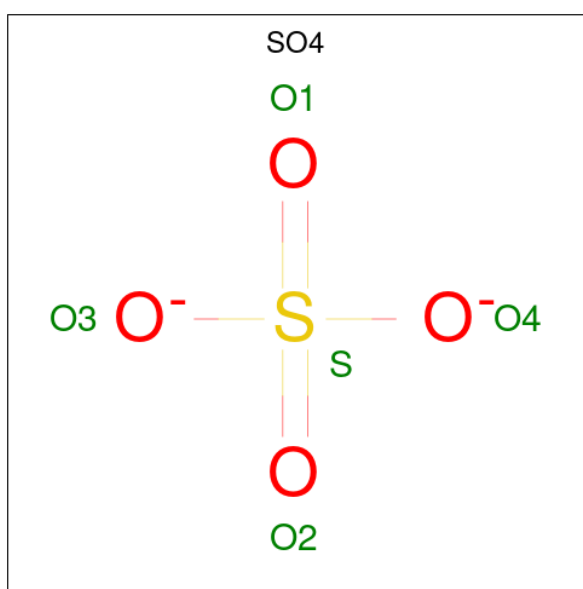
Mol	Chain	Residues	Atoms		ZeroOcc	AltConf
			Total	O		
3	A	1	4	2	0	0
3	A	1	4	2	0	0

*Continued on next page...*

Continued from previous page...

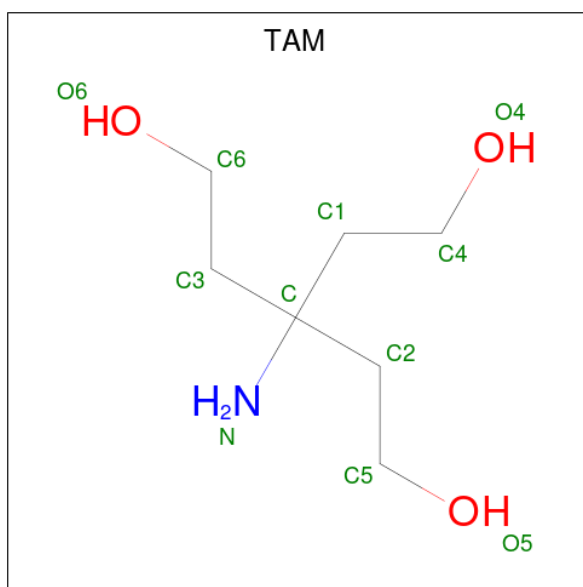
Mol	Chain	Residues	Atoms	ZeroOcc	AltConf
3	A	1	Total C O 4 2 2	0	0
3	A	1	Total C O 4 2 2	0	0
3	B	1	Total C O 4 2 2	0	0
3	B	1	Total C O 4 2 2	0	0

- Molecule 4 is SULFATE ION (three-letter code: SO4) (formula: O<sub>4</sub>S).



Mol	Chain	Residues	Atoms	ZeroOcc	AltConf
4	A	1	Total O S 5 4 1	0	0
4	A	1	Total O S 5 4 1	0	0

- Molecule 5 is TRIS(HYDROXYETHYL)AMINOMETHANE (three-letter code: TAM) (formula: C<sub>7</sub>H<sub>17</sub>NO<sub>3</sub>).



Mol	Chain	Residues	Atoms				ZeroOcc	AltConf
			Total	C	N	O		
5	A	1	11	7	1	3	0	0

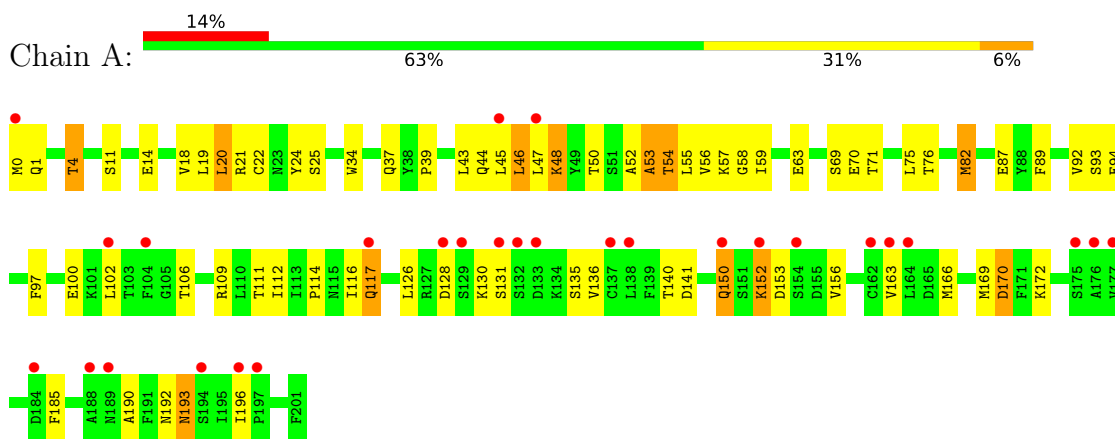
- Molecule 6 is water.

Mol	Chain	Residues	Atoms		ZeroOcc	AltConf
			Total	O		
6	A	32	32	32	0	0
6	B	17	17	17	0	0

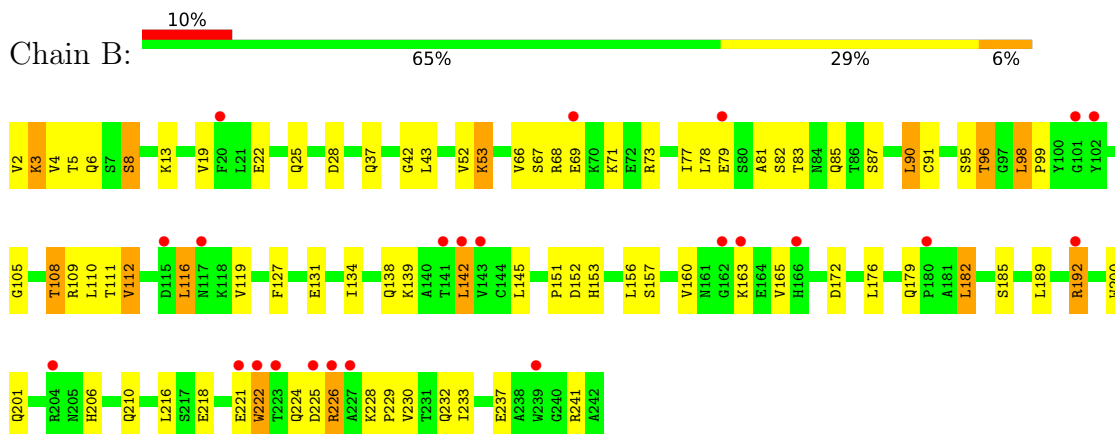
### 3 Residue-property plots [i](#)

These plots are drawn for all protein, RNA, DNA and oligosaccharide chains in the entry. The first graphic for a chain summarises the proportions of the various outlier classes displayed in the second graphic. The second graphic shows the sequence view annotated by issues in geometry and electron density. Residues are color-coded according to the number of geometric quality criteria for which they contain at least one outlier: green = 0, yellow = 1, orange = 2 and red = 3 or more. A red dot above a residue indicates a poor fit to the electron density ( $RSRZ > 2$ ). Stretches of 2 or more consecutive residues without any outlier are shown as a green connector. Residues present in the sample, but not in the model, are shown in grey.

- Molecule 1: Alpha chain of Class II TCR



- Molecule 2: Beta Chain of Class II TCR



## 4 Data and refinement statistics

Property	Value	Source
Space group	P 1 21 1	Depositor
Cell constants a, b, c, $\alpha$ , $\beta$ , $\gamma$	69.24Å 49.66Å 72.61Å 90.00° 94.33° 90.00°	Depositor
Resolution (Å)	26.36 – 2.39 26.36 – 2.39	Depositor EDS
% Data completeness (in resolution range)	100.0 (26.36-2.39) 98.3 (26.36-2.39)	Depositor EDS
$R_{merge}$	(Not available)	Depositor
$R_{sym}$	0.04	Depositor
$\langle I/\sigma(I) \rangle$ <sup>1</sup>	2.63 (at 2.39Å)	Xtrriage
Refinement program	REFMAC 5.5.0109	Depositor
R, $R_{free}$	0.249 , 0.298 0.237 , 0.294	Depositor DCC
$R_{free}$ test set	994 reflections (5.11%)	wwPDB-VP
Wilson B-factor (Å <sup>2</sup> )	51.4	Xtrriage
Anisotropy	0.440	Xtrriage
Bulk solvent $k_{sol}$ (e/Å <sup>3</sup> ), $B_{sol}$ (Å <sup>2</sup> )	0.34 , 46.4	EDS
L-test for twinning <sup>2</sup>	$\langle  L  \rangle = 0.47$ , $\langle L^2 \rangle = 0.30$	Xtrriage
Estimated twinning fraction	0.025 for l,-k,h	Xtrriage
$F_o, F_c$ correlation	0.93	EDS
Total number of atoms	3626	wwPDB-VP
Average B, all atoms (Å <sup>2</sup> )	48.0	wwPDB-VP

Xtrriage's analysis on translational NCS is as follows: *The largest off-origin peak in the Patterson function is 5.79% of the height of the origin peak. No significant pseudotranslation is detected.*

<sup>1</sup>Intensities estimated from amplitudes.

<sup>2</sup>Theoretical values of  $\langle |L| \rangle$ ,  $\langle L^2 \rangle$  for acentric reflections are 0.5, 0.333 respectively for untwinned datasets, and 0.375, 0.2 for perfectly twinned datasets.



## 5 Model quality [i](#)

### 5.1 Standard geometry [i](#)

Bond lengths and bond angles in the following residue types are not validated in this section: TAM, EDO, SO4

The Z score for a bond length (or angle) is the number of standard deviations the observed value is removed from the expected value. A bond length (or angle) with  $|Z| > 5$  is considered an outlier worth inspection. RMSZ is the root-mean-square of all Z scores of the bond lengths (or angles).

Mol	Chain	Bond lengths		Bond angles	
		RMSZ	# Z  >5	RMSZ	# Z  >5
1	A	0.86	0/1634	0.89	3/2216 (0.1%)
2	B	0.81	0/1988	0.85	1/2696 (0.0%)
All	All	0.83	0/3622	0.87	4/4912 (0.1%)

There are no bond length outliers.

All (4) bond angle outliers are listed below:

Mol	Chain	Res	Type	Atoms	Z	Observed(°)	Ideal(°)
1	A	50	THR	N-CA-C	-5.94	94.96	111.00
1	A	46	LEU	CB-CG-CD1	-5.61	101.46	111.00
2	B	68	ARG	NE-CZ-NH2	-5.52	117.54	120.30
1	A	82	MET	CG-SD-CE	-5.09	92.06	100.20

There are no chirality outliers.

There are no planarity outliers.

### 5.2 Too-close contacts [i](#)

In the following table, the Non-H and H(model) columns list the number of non-hydrogen atoms and hydrogen atoms in the chain respectively. The H(added) column lists the number of hydrogen atoms added and optimized by MolProbity. The Clashes column lists the number of clashes within the asymmetric unit, whereas Symm-Clashes lists symmetry-related clashes.

Mol	Chain	Non-H	H(model)	H(added)	Clashes	Symm-Clashes
1	A	1594	0	1536	95	0
2	B	1938	0	1865	69	0
3	A	16	0	24	20	0
3	B	8	0	12	6	0
4	A	10	0	0	4	0

*Continued on next page...*

*Continued from previous page...*

Mol	Chain	Non-H	H(model)	H(added)	Clashes	Symm-Clashes
5	A	11	0	17	0	0
6	A	32	0	0	1	0
6	B	17	0	0	4	0
All	All	3626	0	3454	157	0

The all-atom clashscore is defined as the number of clashes found per 1000 atoms (including hydrogen atoms). The all-atom clashscore for this structure is 22.

All (157) close contacts within the same asymmetric unit are listed below, sorted by their clash magnitude.

Atom-1	Atom-2	Interatomic distance (Å)	Clash overlap (Å)
2:B:3:LYS:HE2	6:B:403:HOH:O	1.52	1.09
1:A:24:TYR:O	1:A:71:THR:HG23	1.57	1.03
2:B:2:VAL:N	6:B:416:HOH:O	1.93	0.99
1:A:24:TYR:O	1:A:71:THR:CG2	2.13	0.97
2:B:226:ARG:H	2:B:226:ARG:HD2	1.30	0.94
1:A:71:THR:HG22	1:A:71:THR:O	1.65	0.94
2:B:96:THR:HG22	3:B:301:EDO:O1	1.68	0.91
2:B:96:THR:CG2	3:B:301:EDO:O1	2.29	0.80
1:A:172:LYS:O	3:A:303:EDO:O1	1.99	0.80
1:A:82:MET:HE2	1:A:112:ILE:HG21	1.64	0.78
2:B:172:ASP:OD1	2:B:192:ARG:NH2	2.17	0.78
1:A:44:GLN:HA	4:A:306:SO4:O3	1.83	0.78
1:A:71:THR:CG2	1:A:71:THR:O	2.32	0.77
1:A:48[B]:LYS:HD2	3:A:302:EDO:H12	1.65	0.76
1:A:97:PHE:O	3:A:302:EDO:O1	2.03	0.75
1:A:152:LYS:NZ	1:A:193:ASN:HD21	1.85	0.75
2:B:3:LYS:CE	6:B:403:HOH:O	2.22	0.71
1:A:0:MET:HG3	1:A:93:SER:HA	1.72	0.70
2:B:116:LEU:HD11	2:B:216:LEU:HD11	1.73	0.70
1:A:37:GLN:HE22	2:B:37:GLN:HE22	1.39	0.69
2:B:8:SER:O	2:B:108:THR:HB	1.92	0.69
1:A:48[B]:LYS:CD	3:A:302:EDO:H12	2.22	0.69
1:A:93:SER:HB2	1:A:102:LEU:HD23	1.74	0.68
1:A:0:MET:SD	1:A:0:MET:O	2.52	0.67
1:A:21:ARG:HG2	3:A:301:EDO:C2	2.25	0.67
1:A:136:VAL:HG13	2:B:127:PHE:CE2	2.30	0.67
1:A:82:MET:HE2	1:A:112:ILE:CG2	2.24	0.67
2:B:4:VAL:HG22	2:B:25:GLN:HB3	1.76	0.67
2:B:22:GLU:OE1	2:B:73:ARG:HD3	1.95	0.66
1:A:0:MET:CG	1:A:93:SER:HA	2.26	0.65

*Continued on next page...*

*Continued from previous page...*

Atom-1	Atom-2	Interatomic distance (Å)	Clash overlap (Å)
1:A:128:ASP:OD2	1:A:130:LYS:HG2	1.97	0.65
1:A:37:GLN:HE22	2:B:37:GLN:NE2	1.96	0.64
1:A:116:ILE:HG23	3:A:303:EDO:O1	1.98	0.64
2:B:131:GLU:HA	2:B:134:ILE:HD12	1.79	0.63
2:B:172:ASP:HB2	2:B:189:LEU:HD12	1.80	0.63
1:A:48[B]:LYS:CD	3:A:302:EDO:C1	2.76	0.63
2:B:111:THR:OG1	2:B:153:HIS:HE1	1.81	0.63
1:A:48[B]:LYS:HD2	3:A:302:EDO:C1	2.30	0.62
2:B:116:LEU:CD1	2:B:216:LEU:HD11	2.29	0.62
1:A:24:TYR:O	1:A:71:THR:HG21	2.00	0.60
1:A:117:GLN:H	1:A:117:GLN:CD	2.03	0.60
1:A:196:ILE:HD12	1:A:196:ILE:H	1.67	0.60
1:A:114:PRO:HG3	1:A:163:VAL:HG11	1.84	0.59
2:B:222:TRP:CZ2	2:B:229:PRO:HD3	2.38	0.59
1:A:152:LYS:HZ3	1:A:193:ASN:HD21	1.50	0.59
1:A:25:SER:OG	4:A:305:SO4:O2	2.18	0.59
1:A:4:THR:HG23	4:A:305:SO4:O1	2.04	0.58
1:A:48[B]:LYS:CE	3:A:302:EDO:H12	2.33	0.58
2:B:116:LEU:HD11	2:B:216:LEU:CD1	2.32	0.58
1:A:4:THR:HG23	4:A:305:SO4:S	2.43	0.58
1:A:82:MET:HE2	1:A:82:MET:HA	1.86	0.58
1:A:21:ARG:HG2	3:A:301:EDO:H22	1.86	0.57
2:B:237:GLU:OE2	6:B:417:HOH:O	2.17	0.57
2:B:116:LEU:HD13	2:B:116:LEU:O	2.05	0.57
1:A:93:SER:HB2	1:A:102:LEU:CD2	2.36	0.56
2:B:225:ASP:HB2	2:B:226:ARG:NH1	2.21	0.56
2:B:218:GLU:O	2:B:228:LYS:NZ	2.39	0.55
1:A:169:MET:O	1:A:170:ASP:C	2.45	0.55
1:A:196:ILE:HD12	1:A:196:ILE:N	2.21	0.54
1:A:136:VAL:HG22	2:B:127:PHE:CD2	2.42	0.54
1:A:100:GLU:HB3	3:B:301:EDO:O2	2.08	0.54
2:B:142:LEU:HD12	2:B:142:LEU:N	2.23	0.54
1:A:0:MET:HB2	1:A:94:GLU:N	2.22	0.54
1:A:0:MET:HB3	1:A:94:GLU:HG3	1.89	0.54
2:B:222:TRP:CZ2	2:B:229:PRO:CD	2.91	0.54
1:A:57:LYS:NZ	1:A:63:GLU:OE2	2.41	0.53
1:A:19:LEU:C	1:A:20:LEU:HD12	2.28	0.53
1:A:11:SER:HA	1:A:111:THR:O	2.08	0.52
1:A:53:ALA:HA	6:A:620:HOH:O	2.08	0.52
1:A:82:MET:HA	1:A:82:MET:CE	2.40	0.52
2:B:69:GLU:OE2	2:B:69:GLU:N	2.42	0.52

*Continued on next page...*

*Continued from previous page...*

Atom-1	Atom-2	Interatomic distance (Å)	Clash overlap (Å)
1:A:14:GLU:HG3	1:A:82:MET:HE3	1.91	0.52
2:B:52:VAL:HG22	2:B:71:LYS:HA	1.92	0.52
1:A:0:MET:CB	1:A:94:GLU:HG3	2.40	0.51
2:B:6:GLN:HE21	2:B:105:GLY:HA3	1.75	0.51
1:A:140:THR:OG1	1:A:141:ASP:N	2.43	0.51
1:A:126:LEU:HD12	1:A:126:LEU:N	2.26	0.51
2:B:210:GLN:HG3	2:B:233:ILE:CG2	2.41	0.50
1:A:19:LEU:O	1:A:20:LEU:HD12	2.11	0.50
1:A:141:ASP:HA	3:A:303:EDO:C2	2.41	0.50
1:A:19:LEU:HD12	1:A:76:THR:CG2	2.42	0.50
1:A:87:GLU:HG2	1:A:89:PHE:CZ	2.47	0.50
2:B:82:SER:O	2:B:112:VAL:HG11	2.12	0.49
1:A:19:LEU:HD12	1:A:76:THR:HG22	1.94	0.49
1:A:48[A]:LYS:O	1:A:56:VAL:HG11	2.12	0.48
1:A:0:MET:HB2	1:A:93:SER:C	2.33	0.48
2:B:78:LEU:HD12	2:B:78:LEU:N	2.28	0.48
1:A:106:THR:HA	2:B:42:GLY:HA3	1.95	0.48
2:B:6:GLN:NE2	2:B:91:CYS:H	2.12	0.48
2:B:52:VAL:HG12	2:B:53:LYS:HD2	1.95	0.48
1:A:14:GLU:HB2	1:A:82:MET:HE1	1.95	0.48
1:A:116:ILE:CG2	3:A:303:EDO:C1	2.92	0.47
2:B:96:THR:HG22	3:B:301:EDO:HO1	1.78	0.47
2:B:96:THR:HA	3:B:301:EDO:H11	1.96	0.47
2:B:201:GLN:HA	2:B:241:ARG:O	2.14	0.47
1:A:20:LEU:HB2	1:A:75:LEU:HB3	1.97	0.47
1:A:82:MET:CE	1:A:112:ILE:CG2	2.91	0.47
1:A:21:ARG:HG2	3:A:301:EDO:H21	1.97	0.47
1:A:54:THR:HG22	1:A:55:LEU:N	2.29	0.47
2:B:66:VAL:HG13	2:B:67:SER:N	2.28	0.47
2:B:224:GLN:CB	2:B:226:ARG:HD3	2.45	0.47
1:A:193:ASN:HD22	1:A:193:ASN:N	2.13	0.47
1:A:22:CYS:HB2	1:A:34:TRP:CZ2	2.50	0.47
2:B:19:VAL:O	2:B:77:ILE:HA	2.15	0.47
1:A:116:ILE:HG23	3:A:303:EDO:C1	2.46	0.46
1:A:20:LEU:N	1:A:20:LEU:CD1	2.78	0.46
1:A:48[B]:LYS:CE	3:A:302:EDO:C1	2.93	0.46
2:B:230:VAL:O	2:B:232:GLN:HG2	2.15	0.46
2:B:22:GLU:OE1	2:B:73:ARG:CD	2.61	0.46
1:A:114:PRO:HG3	1:A:163:VAL:CG1	2.46	0.45
1:A:48[B]:LYS:HZ3	1:A:97:PHE:HA	1.81	0.45
1:A:166:MET:SD	2:B:139:LYS:HE2	2.57	0.45

*Continued on next page...*

*Continued from previous page...*

Atom-1	Atom-2	Interatomic distance (Å)	Clash overlap (Å)
2:B:83:THR:HG22	2:B:112:VAL:O	2.17	0.45
2:B:176:LEU:C	2:B:176:LEU:HD12	2.37	0.45
2:B:111:THR:OG1	2:B:153:HIS:CE1	2.65	0.45
2:B:85:GLN:O	2:B:110:LEU:HD23	2.17	0.45
1:A:0:MET:HA	1:A:92:VAL:HG22	1.98	0.44
1:A:70:GLU:O	1:A:71:THR:HB	2.16	0.44
2:B:43:LEU:HD21	2:B:90:LEU:HD12	1.99	0.44
2:B:127:PHE:CE1	2:B:145:LEU:HD12	2.52	0.44
2:B:156:LEU:HD23	2:B:157:SER:N	2.33	0.44
1:A:153:ASP:OD1	1:A:156:VAL:HG23	2.18	0.44
1:A:136:VAL:HG13	2:B:127:PHE:CZ	2.53	0.44
1:A:116:ILE:CG2	3:A:303:EDO:H12	2.47	0.44
2:B:156:LEU:HD23	2:B:156:LEU:C	2.37	0.44
1:A:150:GLN:HE21	1:A:150:GLN:HB2	1.62	0.44
2:B:179:GLN:HB3	2:B:182:LEU:HD22	2.00	0.44
2:B:151:PRO:O	2:B:153:HIS:N	2.51	0.43
1:A:0:MET:O	1:A:0:MET:CE	2.66	0.43
1:A:48[B]:LYS:HE2	3:A:302:EDO:C1	2.48	0.43
2:B:95:SER:HB3	2:B:98:LEU:HB2	1.99	0.43
2:B:179:GLN:O	2:B:185:SER:HB2	2.18	0.43
1:A:14:GLU:HG3	1:A:82:MET:CE	2.48	0.43
2:B:81:ALA:HB1	2:B:112:VAL:HG21	2.00	0.43
2:B:224:GLN:HB2	2:B:226:ARG:HD3	2.00	0.43
1:A:47:LEU:HB3	1:A:58:GLY:HA3	2.00	0.43
2:B:160:VAL:HA	2:B:206:HIS:O	2.19	0.43
1:A:52:ALA:O	1:A:53:ALA:HB2	2.18	0.43
1:A:46:LEU:HA	1:A:59:ILE:HG12	2.00	0.42
1:A:193:ASN:N	1:A:193:ASN:ND2	2.67	0.42
1:A:185:PHE:CZ	1:A:190:ALA:HB1	2.55	0.42
2:B:28:ASP:CG	2:B:71:LYS:NZ	2.73	0.42
1:A:116:ILE:HG21	3:A:303:EDO:O2	2.18	0.42
2:B:4:VAL:O	2:B:4:VAL:HG12	2.18	0.42
2:B:82:SER:O	2:B:112:VAL:CG1	2.67	0.42
1:A:82:MET:CE	1:A:112:ILE:HG21	2.44	0.42
1:A:128:ASP:OD1	1:A:130:LYS:HE2	2.19	0.42
1:A:18:VAL:HG12	1:A:20:LEU:HD13	2.02	0.42
2:B:96:THR:HG23	3:B:301:EDO:O1	2.16	0.42
2:B:13:LYS:O	2:B:112:VAL:HA	2.20	0.41
1:A:141:ASP:HA	3:A:303:EDO:H21	2.02	0.41
1:A:48[B]:LYS:HE2	3:A:302:EDO:H11	2.01	0.41
2:B:200:TRP:O	2:B:200:TRP:CG	2.74	0.41

*Continued on next page...*

Continued from previous page...

Atom-1	Atom-2	Interatomic distance (Å)	Clash overlap (Å)
1:A:54:THR:CG2	1:A:55:LEU:N	2.84	0.41
2:B:66:VAL:CG1	2:B:67:SER:N	2.82	0.41
2:B:37:GLN:HG3	2:B:43:LEU:HD12	2.03	0.40
1:A:19:LEU:C	1:A:20:LEU:CD1	2.90	0.40

There are no symmetry-related clashes.

## 5.3 Torsion angles [i](#)

### 5.3.1 Protein backbone [i](#)

In the following table, the Percentiles column shows the percent Ramachandran outliers of the chain as a percentile score with respect to all X-ray entries followed by that with respect to entries of similar resolution.

The Analysed column shows the number of residues for which the backbone conformation was analysed, and the total number of residues.

Mol	Chain	Analysed	Favoured	Allowed	Outliers	Percentiles	
1	A	203/202 (100%)	185 (91%)	14 (7%)	4 (2%)	7	9
2	B	239/241 (99%)	221 (92%)	16 (7%)	2 (1%)	19	29
All	All	442/443 (100%)	406 (92%)	30 (7%)	6 (1%)	11	15

All (6) Ramachandran outliers are listed below:

Mol	Chain	Res	Type
1	A	135	SER
2	B	152	ASP
1	A	53	ALA
1	A	131	SER
1	A	170	ASP
2	B	99	PRO

### 5.3.2 Protein sidechains [i](#)

In the following table, the Percentiles column shows the percent sidechain outliers of the chain as a percentile score with respect to all X-ray entries followed by that with respect to entries of similar resolution.

The Analysed column shows the number of residues for which the sidechain conformation was

analysed, and the total number of residues.

Mol	Chain	Analysed	Rotameric	Outliers	Percentiles
1	A	182/180 (101%)	165 (91%)	17 (9%)	9 13
2	B	215/215 (100%)	192 (89%)	23 (11%)	6 9
All	All	397/395 (100%)	357 (90%)	40 (10%)	8 11

All (40) residues with a non-rotameric sidechain are listed below:

Mol	Chain	Res	Type
1	A	1	GLN
1	A	4	THR
1	A	20	LEU
1	A	39	PRO
1	A	43	LEU
1	A	45	LEU
1	A	48[A]	LYS
1	A	48[B]	LYS
1	A	54	THR
1	A	69	SER
1	A	109[A]	ARG
1	A	109[B]	ARG
1	A	117	GLN
1	A	150	GLN
1	A	152	LYS
1	A	192	ASN
1	A	193	ASN
2	B	3	LYS
2	B	5	THR
2	B	8	SER
2	B	53	LYS
2	B	79	GLU
2	B	87	SER
2	B	90	LEU
2	B	96	THR
2	B	98	LEU
2	B	108	THR
2	B	109	ARG
2	B	112	VAL
2	B	116	LEU
2	B	119	VAL
2	B	138	GLN
2	B	142	LEU
2	B	163	LYS

*Continued on next page...*

*Continued from previous page...*

Mol	Chain	Res	Type
2	B	165	VAL
2	B	182	LEU
2	B	192	ARG
2	B	221	GLU
2	B	222	TRP
2	B	226	ARG

Sometimes sidechains can be flipped to improve hydrogen bonding and reduce clashes. All (13) such sidechains are listed below:

Mol	Chain	Res	Type
1	A	1	GLN
1	A	37	GLN
1	A	99	ASN
1	A	145	GLN
1	A	147	ASN
1	A	150	GLN
1	A	193	ASN
2	B	6	GLN
2	B	117	ASN
2	B	138	GLN
2	B	153	HIS
2	B	179	GLN
2	B	212	GLN

### 5.3.3 RNA [i](#)

There are no RNA molecules in this entry.

### 5.4 Non-standard residues in protein, DNA, RNA chains [i](#)

There are no non-standard protein/DNA/RNA residues in this entry.

### 5.5 Carbohydrates [i](#)

There are no monosaccharides in this entry.

### 5.6 Ligand geometry [i](#)

9 ligands are modelled in this entry.



In the following table, the Counts columns list the number of bonds (or angles) for which Mogul statistics could be retrieved, the number of bonds (or angles) that are observed in the model and the number of bonds (or angles) that are defined in the Chemical Component Dictionary. The Link column lists molecule types, if any, to which the group is linked. The Z score for a bond length (or angle) is the number of standard deviations the observed value is removed from the expected value. A bond length (or angle) with  $|Z| > 2$  is considered an outlier worth inspection. RMSZ is the root-mean-square of all Z scores of the bond lengths (or angles).

Mol	Type	Chain	Res	Link	Bond lengths			Bond angles		
					Counts	RMSZ	# Z  > 2	Counts	RMSZ	# Z  > 2
3	EDO	A	304	-	3,3,3	0.67	0	2,2,2	0.11	0
3	EDO	A	301	-	3,3,3	0.53	0	2,2,2	0.32	0
3	EDO	A	302	-	3,3,3	0.47	0	2,2,2	0.21	0
4	SO4	A	305	-	4,4,4	0.12	0	6,6,6	0.98	0
4	SO4	A	306	-	4,4,4	0.32	0	6,6,6	0.66	0
3	EDO	B	301	-	3,3,3	0.52	0	2,2,2	0.34	0
3	EDO	A	303	-	3,3,3	0.55	0	2,2,2	0.43	0
5	TAM	A	307	-	7,10,10	0.88	0	9,12,12	0.70	0
3	EDO	B	302	-	3,3,3	0.63	0	2,2,2	0.33	0

In the following table, the Chirals column lists the number of chiral outliers, the number of chiral centers analysed, the number of these observed in the model and the number defined in the Chemical Component Dictionary. Similar counts are reported in the Torsion and Rings columns. '-' means no outliers of that kind were identified.

Mol	Type	Chain	Res	Link	Chirals	Torsions	Rings
3	EDO	A	304	-	-	1/1/1/1	-
3	EDO	A	301	-	-	0/1/1/1	-
3	EDO	A	302	-	-	1/1/1/1	-
3	EDO	B	301	-	-	1/1/1/1	-
3	EDO	A	303	-	-	1/1/1/1	-
5	TAM	A	307	-	-	6/12/12/12	-
3	EDO	B	302	-	-	1/1/1/1	-

There are no bond length outliers.

There are no bond angle outliers.

There are no chirality outliers.

All (11) torsion outliers are listed below:

Mol	Chain	Res	Type	Atoms
5	A	307	TAM	C2-C-C1-C4
5	A	307	TAM	N-C-C2-C5
5	A	307	TAM	C-C1-C4-O4

*Continued on next page...*

*Continued from previous page...*

Mol	Chain	Res	Type	Atoms
5	A	307	TAM	C-C3-C6-O6
5	A	307	TAM	C3-C-C1-C4
3	B	301	EDO	O1-C1-C2-O2
3	B	302	EDO	O1-C1-C2-O2
5	A	307	TAM	N-C-C1-C4
3	A	302	EDO	O1-C1-C2-O2
3	A	303	EDO	O1-C1-C2-O2
3	A	304	EDO	O1-C1-C2-O2

There are no ring outliers.

6 monomers are involved in 30 short contacts:

Mol	Chain	Res	Type	Clashes	Symm-Clashes
3	A	301	EDO	3	0
3	A	302	EDO	9	0
4	A	305	SO4	3	0
4	A	306	SO4	1	0
3	B	301	EDO	6	0
3	A	303	EDO	8	0

## 5.7 Other polymers [i](#)

There are no such residues in this entry.

## 5.8 Polymer linkage issues [i](#)

There are no chain breaks in this entry.

## 6 Fit of model and data

### 6.1 Protein, DNA and RNA chains

In the following table, the column labelled ‘#RSRZ > 2’ contains the number (and percentage) of RSRZ outliers, followed by percent RSRZ outliers for the chain as percentile scores relative to all X-ray entries and entries of similar resolution. The OWAB column contains the minimum, median, 95<sup>th</sup> percentile and maximum values of the occupancy-weighted average B-factor per residue. The column labelled ‘Q < 0.9’ lists the number of (and percentage) of residues with an average occupancy less than 0.9.

Mol	Chain	Analysed	<RSRZ>	#RSRZ>2	OWAB(Å <sup>2</sup> )	Q<0.9
1	A	202/202 (100%)	0.78	28 (13%) <b>2</b> <b>2</b>	18, 43, 82, 87	0
2	B	241/241 (100%)	0.59	23 (9%) <b>8</b> <b>7</b>	28, 48, 69, 75	0
All	All	443/443 (100%)	0.68	51 (11%) <b>4</b> <b>4</b>	18, 47, 77, 87	0

All (51) RSRZ outliers are listed below:

Mol	Chain	Res	Type	RSRZ
1	A	129	SER	7.9
1	A	132	SER	6.0
1	A	154	SER	5.0
1	A	138	LEU	4.8
1	A	131	SER	4.3
1	A	196	ILE	4.2
2	B	227	ALA	4.0
1	A	177	VAL	4.0
2	B	162	GLY	3.6
2	B	222	TRP	3.5
1	A	194	SER	3.4
2	B	143	VAL	3.3
2	B	141	THR	3.3
2	B	225	ASP	3.2
2	B	204	ARG	3.2
2	B	20	PHE	3.1
2	B	223	THR	3.1
1	A	133	ASP	3.1
1	A	197	PRO	3.1
1	A	0	MET	3.0
1	A	45	LEU	2.9
1	A	176	ALA	2.9
2	B	226	ARG	2.9
1	A	184	ASP	2.8

*Continued on next page...*

*Continued from previous page...*

Mol	Chain	Res	Type	RSRZ
1	A	163	VAL	2.8
1	A	175	SER	2.7
2	B	102	TYR	2.7
2	B	79	GLU	2.7
2	B	192	ARG	2.6
1	A	117	GLN	2.6
1	A	189	ASN	2.6
1	A	137	CYS	2.6
2	B	221	GLU	2.5
1	A	102	LEU	2.5
2	B	117	ASN	2.5
1	A	104	PHE	2.4
2	B	166	HIS	2.4
1	A	164	LEU	2.4
1	A	162	CYS	2.4
2	B	115	ASP	2.4
1	A	188	ALA	2.4
1	A	128	ASP	2.4
1	A	47	LEU	2.4
1	A	150	GLN	2.3
1	A	152	LYS	2.2
2	B	163	LYS	2.2
2	B	69	GLU	2.1
2	B	142	LEU	2.1
2	B	239	TRP	2.1
2	B	180	PRO	2.0
2	B	101	GLY	2.0

## 6.2 Non-standard residues in protein, DNA, RNA chains [i](#)

There are no non-standard protein/DNA/RNA residues in this entry.

## 6.3 Carbohydrates [i](#)

There are no monosaccharides in this entry.

## 6.4 Ligands [i](#)

In the following table, the Atoms column lists the number of modelled atoms in the group and the number defined in the chemical component dictionary. The B-factors column lists the minimum,

median, 95<sup>th</sup> percentile and maximum values of B factors of atoms in the group. The column labelled 'Q< 0.9' lists the number of atoms with occupancy less than 0.9.

Mol	Type	Chain	Res	Atoms	RSCC	RSR	B-factors(Å <sup>2</sup> )	Q<0.9
3	EDO	B	301	4/4	0.32	0.83	83,84,85,85	0
3	EDO	A	303	4/4	0.49	0.72	73,74,74,75	0
3	EDO	A	304	4/4	0.59	0.38	61,62,63,64	0
5	TAM	A	307	11/11	0.64	0.34	69,72,72,74	0
3	EDO	A	302	4/4	0.80	0.33	44,47,47,51	0
4	SO4	A	306	5/5	0.83	0.37	59,60,64,64	0
3	EDO	B	302	4/4	0.84	0.24	51,51,52,53	0
3	EDO	A	301	4/4	0.93	0.36	31,32,34,36	0
4	SO4	A	305	5/5	0.94	0.42	54,55,58,60	0

## 6.5 Other polymers [i](#)

There are no such residues in this entry.