



Full wwPDB X-ray Structure Validation Report ⓘ

Aug 26, 2023 – 06:58 PM EDT

PDB ID : 3GML
Title : Structure of mouse CD1d in complex with C6Ph
Authors : Schiefner, A.; Wilson, I.A.
Deposited on : 2009-03-14
Resolution : 1.70 Å(reported)

This is a Full wwPDB X-ray Structure Validation Report for a publicly released PDB entry.

We welcome your comments at validation@mail.wwpdb.org

A user guide is available at

<https://www.wwpdb.org/validation/2017/XrayValidationReportHelp>

with specific help available everywhere you see the ⓘ symbol.

The types of validation reports are described at

<http://www.wwpdb.org/validation/2017/FAQs#types>.

The following versions of software and data (see [references ⓘ](#)) were used in the production of this report:

MolProbity : 4.02b-467
Mogul : 1.8.5 (274361), CSD as541be (2020)
Xtriage (Phenix) : 1.13
EDS : 2.35
buster-report : 1.1.7 (2018)
Percentile statistics : 20191225.v01 (using entries in the PDB archive December 25th 2019)
Refmac : 5.8.0158
CCP4 : 7.0.044 (Gargrove)
Ideal geometry (proteins) : Engh & Huber (2001)
Ideal geometry (DNA, RNA) : Parkinson et al. (1996)
Validation Pipeline (wwPDB-VP) : 2.35

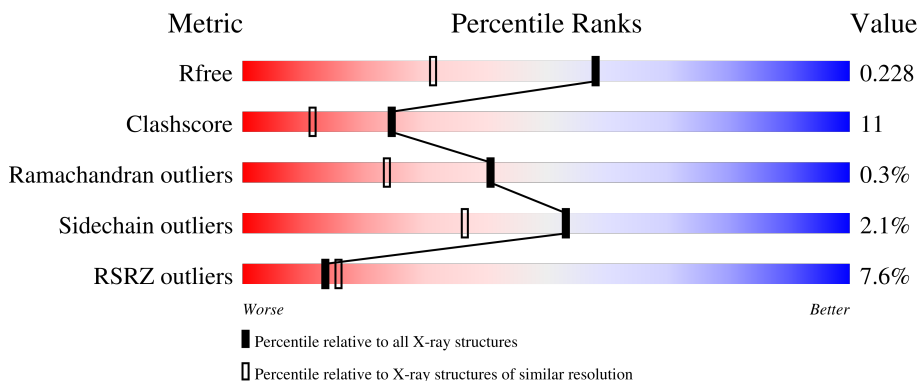
1 Overall quality at a glance

The following experimental techniques were used to determine the structure:

X-RAY DIFFRACTION

The reported resolution of this entry is 1.70 Å.

Percentile scores (ranging between 0-100) for global validation metrics of the entry are shown in the following graphic. The table shows the number of entries on which the scores are based.



Metric	Whole archive (#Entries)	Similar resolution (#Entries, resolution range(Å))
R_{free}	130704	4298 (1.70-1.70)
Clashscore	141614	4695 (1.70-1.70)
Ramachandran outliers	138981	4610 (1.70-1.70)
Sidechain outliers	138945	4610 (1.70-1.70)
RSRZ outliers	127900	4222 (1.70-1.70)

The table below summarises the geometric issues observed across the polymeric chains and their fit to the electron density. The red, orange, yellow and green segments of the lower bar indicate the fraction of residues that contain outliers for ≥ 3 , 2, 1 and 0 types of geometric quality criteria respectively. A grey segment represents the fraction of residues that are not modelled. The numeric value for each fraction is indicated below the corresponding segment, with a dot representing fractions $\leq 5\%$. The upper red bar (where present) indicates the fraction of residues that have poor fit to the electron density. The numeric value is given above the bar.

Mol	Chain	Length	Quality of chain
1	A	287	 9% 77% 15% 7%
2	B	99	 3% 89% 11%
3	C	5	 100%
4	D	6	 100%

The following table lists non-polymeric compounds, carbohydrate monomers and non-standard

residues in protein, DNA, RNA chains that are outliers for geometric or electron-density-fit criteria:

Mol	Type	Chain	Res	Chirality	Geometry	Clashes	Electron density
3	BMA	C	3	-	-	-	X
3	MAN	C	5	-	-	-	X
5	NAG	A	288	-	-	-	X

2 Entry composition i

There are 9 unique types of molecules in this entry. The entry contains 3606 atoms, of which 0 are hydrogens and 0 are deuteriums.

In the tables below, the ZeroOcc column contains the number of atoms modelled with zero occupancy, the AltConf column contains the number of residues with at least one atom in alternate conformation and the Trace column contains the number of residues modelled with at most 2 atoms.

- Molecule 1 is a protein called T-cell surface glycoprotein CD1d1.

Mol	Chain	Residues	Atoms					ZeroOcc	AltConf	Trace
			Total	C	N	O	S			
1	A	268	2211	1404	384	410	13	0	6	0

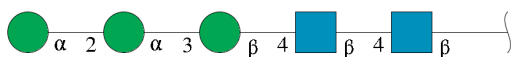
There are 9 discrepancies between the modelled and reference sequences:

Chain	Residue	Modelled	Actual	Comment	Reference
A	201	HIS	ASP	SEE REMARK 999	UNP P11609
A	280	GLY	-	expression tag	UNP P11609
A	281	SER	-	expression tag	UNP P11609
A	282	HIS	-	expression tag	UNP P11609
A	283	HIS	-	expression tag	UNP P11609
A	284	HIS	-	expression tag	UNP P11609
A	285	HIS	-	expression tag	UNP P11609
A	286	HIS	-	expression tag	UNP P11609
A	287	HIS	-	expression tag	UNP P11609

- Molecule 2 is a protein called Beta-2 microglobulin.

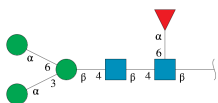
Mol	Chain	Residues	Atoms					ZeroOcc	AltConf	Trace
			Total	C	N	O	S			
2	B	99	833	531	140	155	7	0	2	0

- Molecule 3 is an oligosaccharide called alpha-D-mannopyranose-(1-2)-alpha-D-mannopyranose-(1-3)-beta-D-mannopyranose-(1-4)-2-acetamido-2-deoxy-beta-D-glucopyranose-(1-4)-2-acetamido-2-deoxy-beta-D-glucopyranose.



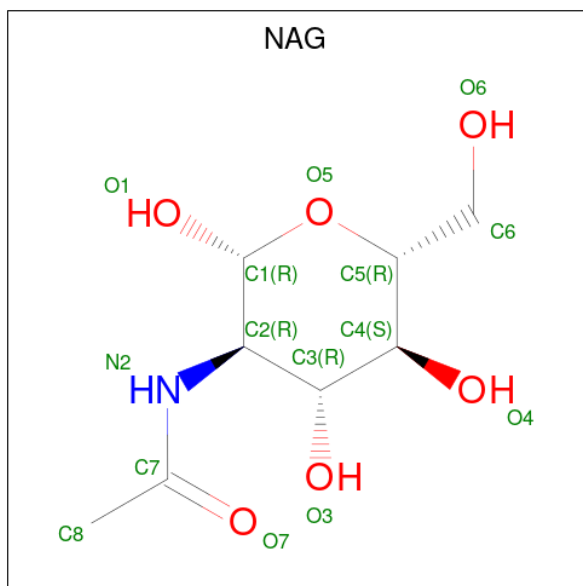
Mol	Chain	Residues	Atoms				ZeroOcc	AltConf	Trace
			Total	C	N	O			
3	C	5	61	34	2	25	0	0	0

- Molecule 4 is an oligosaccharide called alpha-D-mannopyranose-(1-3)-[alpha-D-mannopyranose-(1-6)]beta-D-mannopyranose-(1-4)-2-acetamido-2-deoxy-beta-D-glucopyranose-(1-4)-[alpha-L-fucopyranose-(1-6)]2-acetamido-2-deoxy-beta-D-glucopyranose.



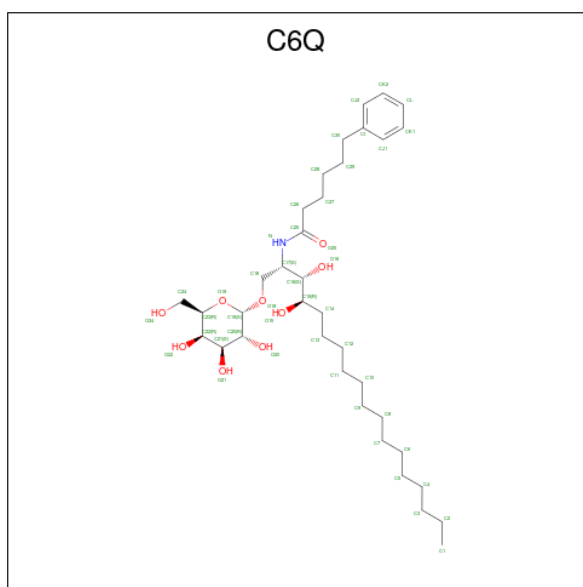
Mol	Chain	Residues	Atoms				ZeroOcc	AltConf	Trace
			Total	C	N	O			
4	D	6	71	40	2	29	0	0	0

- Molecule 5 is 2-acetamido-2-deoxy-beta-D-glucopyranose (three-letter code: NAG) (formula: C₈H₁₅NO₆).



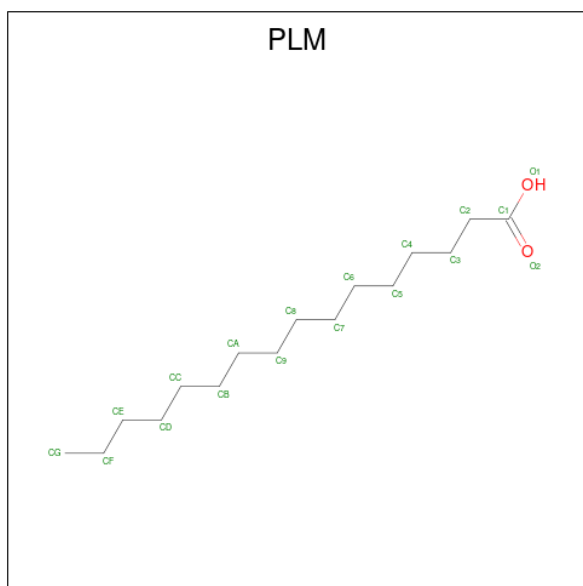
Mol	Chain	Residues	Atoms				ZeroOcc	AltConf
			Total	C	N	O		
5	A	1	14	8	1	5	0	0

- Molecule 6 is N-{(1S,2S,3R)-1-[(alpha-D-galactopyranosyloxy)methyl]-2,3-dihydroxyheptadecyl}-6-phenylhexanamide (three-letter code: C6Q) (formula: C₃₆H₆₃NO₉).



Mol	Chain	Residues	Atoms			ZeroOcc	AltConf	
			Total	C	N			O
6	A	1	46	36	1	9	0	0

- Molecule 7 is PALMITIC ACID (three-letter code: PLM) (formula: $C_{16}H_{32}O_2$).



Mol	Chain	Residues	Atoms			ZeroOcc	AltConf
			Total	C	O		
7	A	1	18	16	2	0	0

- Molecule 8 is 1,2-ETHANEDIOL (three-letter code: EDO) (formula: $C_2H_6O_2$).



Mol	Chain	Residues	Atoms	ZeroOcc	AltConf
8	A	1	Total C O 4 2 2	0	0
8	A	1	Total C O 4 2 2	0	0
8	A	1	Total C O 8 4 4	0	1
8	B	1	Total C O 4 2 2	0	0

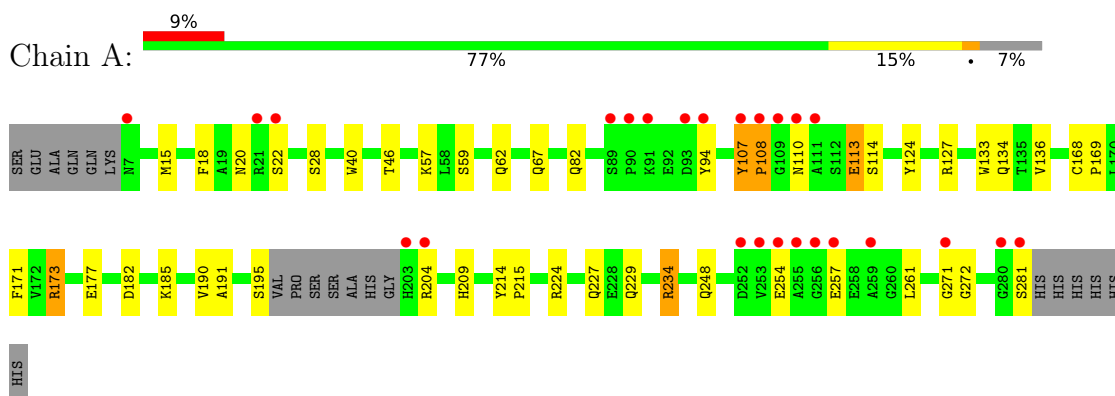
- Molecule 9 is water.

Mol	Chain	Residues	Atoms	ZeroOcc	AltConf
9	A	232	Total O 237 237	0	5
9	B	94	Total O 95 95	0	1

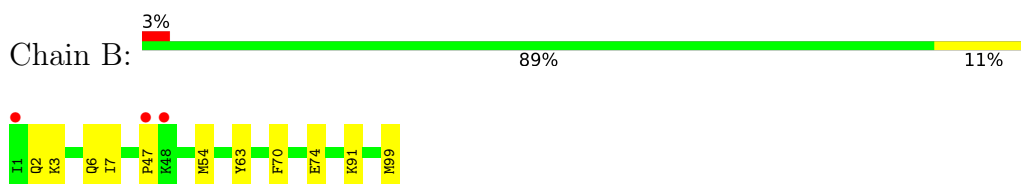
3 Residue-property plots [i](#)

These plots are drawn for all protein, RNA, DNA and oligosaccharide chains in the entry. The first graphic for a chain summarises the proportions of the various outlier classes displayed in the second graphic. The second graphic shows the sequence view annotated by issues in geometry and electron density. Residues are color-coded according to the number of geometric quality criteria for which they contain at least one outlier: green = 0, yellow = 1, orange = 2 and red = 3 or more. A red dot above a residue indicates a poor fit to the electron density ($RSRZ > 2$). Stretches of 2 or more consecutive residues without any outlier are shown as a green connector. Residues present in the sample, but not in the model, are shown in grey.

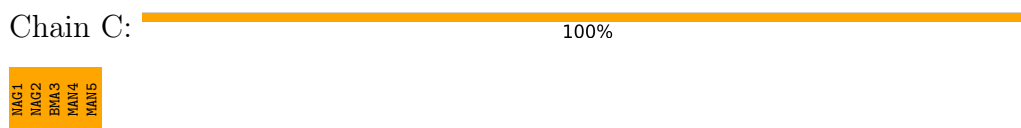
- Molecule 1: T-cell surface glycoprotein CD1d1



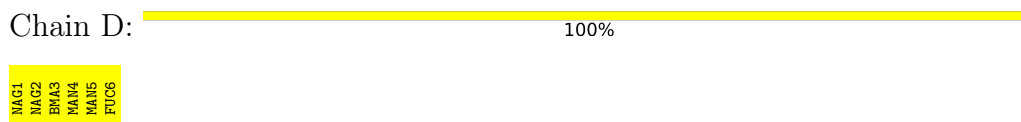
- Molecule 2: Beta-2 microglobulin



- Molecule 3: alpha-D-mannopyranose-(1-2)-alpha-D-mannopyranose-(1-3)-beta-D-mannopyranose-(1-4)-2-acetamido-2-deoxy-beta-D-glucopyranose-(1-4)-2-acetamido-2-deoxy-beta-D-glucopyranose



- Molecule 4: alpha-D-mannopyranose-(1-3)-[alpha-D-mannopyranose-(1-6)]beta-D-mannopyranose-(1-4)-2-acetamido-2-deoxy-beta-D-glucopyranose-(1-4)-[alpha-L-fucopyranose-(1-6)]2-acetamido-2-deoxy-beta-D-glucopyranose



4 Data and refinement statistics

Property	Value	Source
Space group	P 1 21 1	Depositor
Cell constants a, b, c, α , β , γ	41.66Å 97.63Å 55.27Å 90.00° 106.50° 90.00°	Depositor
Resolution (Å)	28.27 – 1.70 28.27 – 1.70	Depositor EDS
% Data completeness (in resolution range)	99.6 (28.27-1.70) 99.6 (28.27-1.70)	Depositor EDS
R_{merge}	(Not available)	Depositor
R_{sym}	0.04	Depositor
$\langle I/\sigma(I) \rangle$ ¹	2.50 (at 1.70Å)	Xtrriage
Refinement program	REFMAC 5.5.0066	Depositor
R, R_{free}	0.177 , 0.216 0.183 , 0.228	Depositor DCC
R_{free} test set	2344 reflections (5.06%)	wwPDB-VP
Wilson B-factor (Å ²)	25.7	Xtrriage
Anisotropy	0.017	Xtrriage
Bulk solvent k_{sol} (e/Å ³), B_{sol} (Å ²)	0.36 , 47.5	EDS
L-test for twinning ²	$\langle L \rangle = 0.48$, $\langle L^2 \rangle = 0.31$	Xtrriage
Estimated twinning fraction	No twinning to report.	Xtrriage
F_o, F_c correlation	0.97	EDS
Total number of atoms	3606	wwPDB-VP
Average B, all atoms (Å ²)	24.0	wwPDB-VP

Xtrriage's analysis on translational NCS is as follows: *The largest off-origin peak in the Patterson function is 5.84% of the height of the origin peak. No significant pseudotranslation is detected.*

¹Intensities estimated from amplitudes.

²Theoretical values of $\langle |L| \rangle$, $\langle L^2 \rangle$ for acentric reflections are 0.5, 0.333 respectively for untwinned datasets, and 0.375, 0.2 for perfectly twinned datasets.

5 Model quality [i](#)

5.1 Standard geometry [i](#)

Bond lengths and bond angles in the following residue types are not validated in this section: C6Q, MAN, BMA, NAG, EDO, PLM, FUC

The Z score for a bond length (or angle) is the number of standard deviations the observed value is removed from the expected value. A bond length (or angle) with $|Z| > 5$ is considered an outlier worth inspection. RMSZ is the root-mean-square of all Z scores of the bond lengths (or angles).

Mol	Chain	Bond lengths		Bond angles	
		RMSZ	# $ Z > 5$	RMSZ	# $ Z > 5$
1	A	1.04	0/2274	0.95	1/3087 (0.0%)
2	B	1.13	2/859 (0.2%)	1.00	0/1164
All	All	1.07	2/3133 (0.1%)	0.96	1/4251 (0.0%)

All (2) bond length outliers are listed below:

Mol	Chain	Res	Type	Atoms	Z	Observed(Å)	Ideal(Å)
2	B	54	MET	CG-SD	-6.45	1.64	1.81
2	B	63	TYR	CD2-CE2	5.20	1.47	1.39

All (1) bond angle outliers are listed below:

Mol	Chain	Res	Type	Atoms	Z	Observed(°)	Ideal(°)
1	A	271	GLY	N-CA-C	-5.42	99.55	113.10

There are no chirality outliers.

There are no planarity outliers.

5.2 Too-close contacts [i](#)

In the following table, the Non-H and H(model) columns list the number of non-hydrogen atoms and hydrogen atoms in the chain respectively. The H(added) column lists the number of hydrogen atoms added and optimized by MolProbity. The Clashes column lists the number of clashes within the asymmetric unit, whereas Symm-Clashes lists symmetry-related clashes.

Mol	Chain	Non-H	H(model)	H(added)	Clashes	Symm-Clashes
1	A	2211	0	2101	50	1
2	B	833	0	806	16	0
3	C	61	0	52	4	1

Continued on next page...

Continued from previous page...

Mol	Chain	Non-H	H(model)	H(added)	Clashes	Symm-Clashes
4	D	71	0	61	0	0
5	A	14	0	13	1	0
6	A	46	0	63	1	0
7	A	18	0	31	2	0
8	A	16	0	24	3	0
8	B	4	0	6	0	0
9	A	237	0	0	6	0
9	B	95	0	0	10	0
All	All	3606	0	3157	70	1

The all-atom clashscore is defined as the number of clashes found per 1000 atoms (including hydrogen atoms). The all-atom clashscore for this structure is 11.

All (70) close contacts within the same asymmetric unit are listed below, sorted by their clash magnitude.

Atom-1	Atom-2	Interatomic distance (Å)	Clash overlap (Å)
2:B:6:GLN:NE2	9:B:342:HOH:O	1.75	1.18
1:A:234:ARG:HG2	1:A:234:ARG:HH11	1.15	1.08
1:A:173:ARG:NH1	1:A:173:ARG:HG2	1.48	1.08
2:B:99:MET:CE	9:B:355:HOH:O	2.02	1.07
2:B:99:MET:HE1	9:B:355:HOH:O	1.54	1.02
1:A:173:ARG:HH11	1:A:173:ARG:CG	1.75	0.99
1:A:248:GLN:HG3	8:A:303:EDO:H21	1.44	0.99
1:A:173:ARG:HG2	1:A:173:ARG:HH11	0.82	0.96
1:A:248:GLN:OE1	2:B:99:MET:HG2	1.72	0.89
1:A:234:ARG:HG2	1:A:234:ARG:NH1	1.93	0.81
2:B:2:GLN:HG2	9:B:268:HOH:O	1.82	0.79
1:A:127:ARG:HG2	1:A:134[B]:GLN:HG2	1.63	0.79
1:A:134[B]:GLN:HG3	1:A:134[B]:GLN:O	1.83	0.78
1:A:173:ARG:NH1	1:A:173:ARG:CG	2.37	0.75
1:A:107:TYR:HB3	1:A:108:PRO:HD2	1.68	0.74
2:B:2:GLN:NE2	9:B:268:HOH:O	1.95	0.74
1:A:59:SER:OG	1:A:62:GLN:HG3	1.90	0.72
1:A:248:GLN:HG3	8:A:303:EDO:C2	2.17	0.71
1:A:127:ARG:CG	1:A:134[B]:GLN:HG2	2.21	0.69
2:B:99:MET:SD	9:B:355:HOH:O	2.49	0.68
1:A:257:GLU:O	1:A:257:GLU:HG3	1.96	0.66
3:C:4:MAN:C1	3:C:5:MAN:H5	2.26	0.65
2:B:2:GLN:CG	9:B:268:HOH:O	2.44	0.61
3:C:1:NAG:H61	3:C:2:NAG:C1	2.32	0.60
1:A:234:ARG:HB2	9:A:532:HOH:O	2.01	0.60

Continued on next page...

Continued from previous page...

Atom-1	Atom-2	Interatomic distance (Å)	Clash overlap (Å)
1:A:127:ARG:HE	1:A:134[B]:GLN:CD	2.06	0.58
1:A:110:ASN:HA	1:A:173:ARG:HH21	1.67	0.58
1:A:110:ASN:HA	1:A:173:ARG:NH2	2.19	0.57
1:A:227[B]:GLN:HE21	1:A:229:GLN:HE22	1.50	0.57
2:B:6:GLN:CD	9:B:342:HOH:O	2.26	0.56
1:A:134[B]:GLN:O	1:A:134[B]:GLN:CG	2.54	0.56
1:A:272:GLY:O	9:A:367:HOH:O	2.18	0.55
1:A:227[A]:GLN:HA	1:A:227[A]:GLN:OE1	2.08	0.54
9:A:492:HOH:O	3:C:2:NAG:H81	2.08	0.53
2:B:74:GLU:HA	2:B:74:GLU:OE1	2.09	0.53
1:A:168:CYS:HB3	1:A:169:PRO:CD	2.40	0.52
1:A:18:PHE:HB3	1:A:94:TYR:CE2	2.45	0.52
1:A:254:GLU:O	1:A:257:GLU:HG2	2.11	0.51
1:A:107:TYR:CB	1:A:108:PRO:HD2	2.34	0.51
1:A:182:ASP:O	1:A:185:LYS:HG2	2.11	0.50
2:B:6:GLN:HG2	9:B:107:HOH:O	2.10	0.50
1:A:82:GLN:HG2	9:A:496:HOH:O	2.13	0.49
2:B:7:ILE:HD12	2:B:91:LYS:HD3	1.95	0.48
3:C:3:BMA:H3	3:C:5:MAN:O6	2.14	0.47
1:A:57:LYS:HE3	1:A:177:GLU:OE2	2.14	0.47
1:A:224:ARG:NH2	1:A:261:LEU:HD21	2.29	0.47
1:A:110:ASN:CA	1:A:173:ARG:HH21	2.27	0.47
1:A:127:ARG:HG2	1:A:134[B]:GLN:CG	2.40	0.47
1:A:195:SER:OG	1:A:204:ARG:NH1	2.48	0.47
1:A:257:GLU:O	1:A:257:GLU:CG	2.56	0.47
1:A:168:CYS:HB3	1:A:169:PRO:HD3	1.97	0.46
1:A:20:ASN:HA	1:A:94:TYR:CD1	2.50	0.45
2:B:47:PRO:O	9:B:261:HOH:O	2.20	0.45
7:A:301:PLM:H71	7:A:301:PLM:HA2	1.60	0.45
1:A:28[A]:SER:OG	1:A:40:TRP:HB3	2.17	0.45
2:B:7:ILE:CD1	2:B:91:LYS:HD3	2.48	0.44
1:A:22:SER:CB	5:A:288:NAG:H82	2.47	0.44
1:A:248:GLN:OE1	2:B:99:MET:CG	2.55	0.44
1:A:234:ARG:HD2	9:A:469:HOH:O	2.16	0.43
1:A:46:THR:HB	1:A:67:GLN:OE1	2.18	0.43
8:A:304[B]:EDO:H22	9:A:517:HOH:O	2.19	0.43
1:A:18:PHE:HB3	1:A:94:TYR:HE2	1.85	0.42
1:A:133:TRP:CH2	6:A:300:C6Q:H9A	2.55	0.41
1:A:191:ALA:HA	1:A:209:HIS:O	2.20	0.41
1:A:214:TYR:CG	1:A:215:PRO:HA	2.55	0.41
1:A:124:TYR:CZ	1:A:136:VAL:HG11	2.55	0.41

Continued on next page...

Continued from previous page...

Atom-1	Atom-2	Interatomic distance (Å)	Clash overlap (Å)
1:A:113:GLU:HG3	1:A:114:SER:N	2.35	0.40
1:A:171:PHE:CE2	7:A:301:PLM:H91	2.56	0.40
2:B:3:LYS:HE2	2:B:3:LYS:HB3	1.80	0.40
1:A:127:ARG:HG3	1:A:134[B]:GLN:HG2	2.02	0.40

All (1) symmetry-related close contacts are listed below. The label for Atom-2 includes the symmetry operator and encoded unit-cell translations to be applied.

Atom-1	Atom-2	Interatomic distance (Å)	Clash overlap (Å)
1:A:190:VAL:CG2	3:C:4:MAN:O3[2_445]	2.15	0.05

5.3 Torsion angles [i](#)

5.3.1 Protein backbone [i](#)

In the following table, the Percentiles column shows the percent Ramachandran outliers of the chain as a percentile score with respect to all X-ray entries followed by that with respect to entries of similar resolution.

The Analysed column shows the number of residues for which the backbone conformation was analysed, and the total number of residues.

Mol	Chain	Analysed	Favoured	Allowed	Outliers	Percentiles	
1	A	270/287 (94%)	263 (97%)	6 (2%)	1 (0%)	34	18
2	B	99/99 (100%)	97 (98%)	2 (2%)	0	100	100
All	All	369/386 (96%)	360 (98%)	8 (2%)	1 (0%)	41	24

All (1) Ramachandran outliers are listed below:

Mol	Chain	Res	Type
1	A	108	PRO

5.3.2 Protein sidechains [i](#)

In the following table, the Percentiles column shows the percent sidechain outliers of the chain as a percentile score with respect to all X-ray entries followed by that with respect to entries of similar resolution.

The Analysed column shows the number of residues for which the sidechain conformation was

analysed, and the total number of residues.

Mol	Chain	Analysed	Rotameric	Outliers	Percentiles	
1	A	240/250 (96%)	234 (98%)	6 (2%)	47	29
2	B	95/93 (102%)	94 (99%)	1 (1%)	73	63
All	All	335/343 (98%)	328 (98%)	7 (2%)	53	36

All (7) residues with a non-rotameric sidechain are listed below:

Mol	Chain	Res	Type
1	A	15	MET
1	A	107	TYR
1	A	113	GLU
1	A	173	ARG
1	A	234	ARG
1	A	281	SER
2	B	70	PHE

Sometimes sidechains can be flipped to improve hydrogen bonding and reduce clashes. There are no such sidechains identified.

5.3.3 RNA [i](#)

There are no RNA molecules in this entry.

5.4 Non-standard residues in protein, DNA, RNA chains [i](#)

There are no non-standard protein/DNA/RNA residues in this entry.

5.5 Carbohydrates [i](#)

11 monosaccharides are modelled in this entry.

In the following table, the Counts columns list the number of bonds (or angles) for which Mogul statistics could be retrieved, the number of bonds (or angles) that are observed in the model and the number of bonds (or angles) that are defined in the Chemical Component Dictionary. The Link column lists molecule types, if any, to which the group is linked. The Z score for a bond length (or angle) is the number of standard deviations the observed value is removed from the expected value. A bond length (or angle) with $|Z| > 2$ is considered an outlier worth inspection. RMSZ is the root-mean-square of all Z scores of the bond lengths (or angles).

Mol	Type	Chain	Res	Link	Bond lengths			Bond angles		
					Counts	RMSZ	# Z > 2	Counts	RMSZ	# Z > 2
3	NAG	C	1	3,1	14,14,15	0.80	1 (7%)	17,19,21	2.32	8 (47%)
3	NAG	C	2	3	14,14,15	0.63	0	17,19,21	1.33	2 (11%)
3	BMA	C	3	3	11,11,12	0.58	0	15,15,17	2.30	5 (33%)
3	MAN	C	4	3	11,11,12	0.64	0	15,15,17	1.33	2 (13%)
3	MAN	C	5	3	11,11,12	0.59	0	15,15,17	1.62	2 (13%)
4	NAG	D	1	4,1	14,14,15	0.64	0	17,19,21	1.70	3 (17%)
4	NAG	D	2	4	14,14,15	0.63	0	17,19,21	1.37	4 (23%)
4	BMA	D	3	4	11,11,12	0.77	0	15,15,17	1.90	5 (33%)
4	MAN	D	4	4	11,11,12	0.59	0	15,15,17	1.96	7 (46%)
4	MAN	D	5	4	11,11,12	0.79	1 (9%)	15,15,17	1.17	1 (6%)
4	FUC	D	6	4	10,10,11	0.82	0	14,14,16	2.05	4 (28%)

In the following table, the Chirals column lists the number of chiral outliers, the number of chiral centers analysed, the number of these observed in the model and the number defined in the Chemical Component Dictionary. Similar counts are reported in the Torsion and Rings columns. '-' means no outliers of that kind were identified.

Mol	Type	Chain	Res	Link	Chirals	Torsions	Rings
3	NAG	C	1	3,1	-	2/6/23/26	0/1/1/1
3	NAG	C	2	3	-	2/6/23/26	0/1/1/1
3	BMA	C	3	3	-	2/2/19/22	0/1/1/1
3	MAN	C	4	3	-	0/2/19/22	0/1/1/1
3	MAN	C	5	3	-	0/2/19/22	0/1/1/1
4	NAG	D	1	4,1	-	0/6/23/26	0/1/1/1
4	NAG	D	2	4	-	1/6/23/26	0/1/1/1
4	BMA	D	3	4	-	0/2/19/22	0/1/1/1
4	MAN	D	4	4	-	0/2/19/22	0/1/1/1
4	MAN	D	5	4	-	0/2/19/22	0/1/1/1
4	FUC	D	6	4	-	-	0/1/1/1

All (2) bond length outliers are listed below:

Mol	Chain	Res	Type	Atoms	Z	Observed(Å)	Ideal(Å)
4	D	5	MAN	O5-C1	-2.25	1.40	1.43
3	C	1	NAG	O3-C3	-2.20	1.37	1.43

All (43) bond angle outliers are listed below:

Mol	Chain	Res	Type	Atoms	Z	Observed(°)	Ideal(°)
3	C	1	NAG	O5-C5-C6	5.45	115.74	107.20
3	C	5	MAN	O5-C5-C6	4.95	114.96	107.20
3	C	3	BMA	C1-C2-C3	4.64	115.36	109.67
3	C	3	BMA	O5-C5-C6	4.57	114.37	107.20
4	D	3	BMA	C1-O5-C5	4.34	118.07	112.19
4	D	1	NAG	C8-C7-N2	4.06	122.97	116.10
4	D	6	FUC	O5-C1-C2	-3.89	104.76	110.77
3	C	3	BMA	C1-O5-C5	-3.88	106.94	112.19
3	C	1	NAG	C1-C2-N2	3.69	116.79	110.49
4	D	6	FUC	C6-C5-C4	-3.59	106.44	113.07
3	C	3	BMA	C3-C4-C5	-3.53	103.95	110.24
4	D	1	NAG	C1-O5-C5	3.36	116.75	112.19
4	D	3	BMA	O2-C2-C3	-3.34	103.46	110.14
4	D	4	MAN	C3-C4-C5	-3.32	104.31	110.24
3	C	1	NAG	C6-C5-C4	-3.14	105.65	113.00
3	C	1	NAG	C3-C4-C5	-3.12	104.67	110.24
3	C	1	NAG	C8-C7-N2	3.12	121.38	116.10
3	C	2	NAG	C2-N2-C7	-2.93	118.73	122.90
3	C	4	MAN	O4-C4-C3	-2.82	103.83	110.35
4	D	4	MAN	C1-C2-C3	-2.81	106.22	109.67
4	D	4	MAN	C2-C3-C4	-2.74	106.16	110.89
3	C	2	NAG	C3-C4-C5	-2.65	105.52	110.24
3	C	5	MAN	C1-O5-C5	-2.64	108.62	112.19
4	D	5	MAN	O3-C3-C4	-2.63	104.28	110.35
4	D	4	MAN	C1-O5-C5	2.58	115.69	112.19
3	C	4	MAN	O5-C5-C6	2.53	111.17	107.20
4	D	6	FUC	O3-C3-C4	2.50	116.12	110.35
4	D	4	MAN	O3-C3-C4	2.47	116.06	110.35
3	C	1	NAG	O4-C4-C5	-2.47	103.17	109.30
4	D	6	FUC	C2-C3-C4	-2.45	106.65	110.89
4	D	3	BMA	O6-C6-C5	-2.44	102.91	111.29
4	D	1	NAG	O7-C7-C8	-2.41	117.58	122.06
3	C	3	BMA	O5-C5-C4	-2.40	104.99	110.83
3	C	1	NAG	C4-C3-C2	2.40	114.53	111.02
4	D	4	MAN	O2-C2-C1	-2.36	104.31	109.15
4	D	2	NAG	C1-O5-C5	2.30	115.31	112.19
4	D	2	NAG	O7-C7-C8	-2.24	117.91	122.06
4	D	3	BMA	O3-C3-C4	-2.19	105.28	110.35
4	D	2	NAG	O5-C1-C2	-2.19	107.83	111.29
3	C	1	NAG	O7-C7-C8	-2.11	118.13	122.06
4	D	3	BMA	O2-C2-C1	-2.10	104.85	109.15
4	D	2	NAG	C8-C7-N2	2.04	119.55	116.10
4	D	4	MAN	O3-C3-C2	2.03	113.89	109.99

There are no chirality outliers.

All (7) torsion outliers are listed below:

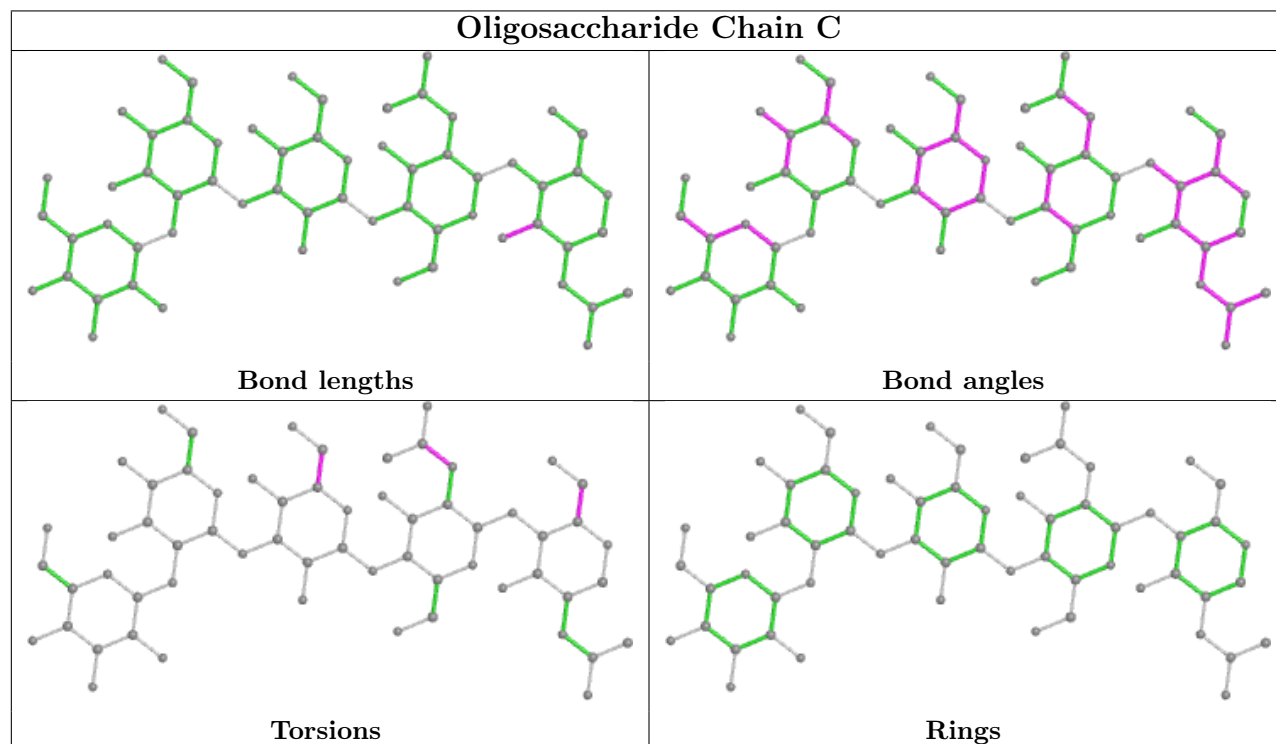
Mol	Chain	Res	Type	Atoms
3	C	3	BMA	O5-C5-C6-O6
3	C	3	BMA	C4-C5-C6-O6
3	C	1	NAG	O5-C5-C6-O6
3	C	2	NAG	C8-C7-N2-C2
3	C	2	NAG	O7-C7-N2-C2
3	C	1	NAG	C4-C5-C6-O6
4	D	2	NAG	O5-C5-C6-O6

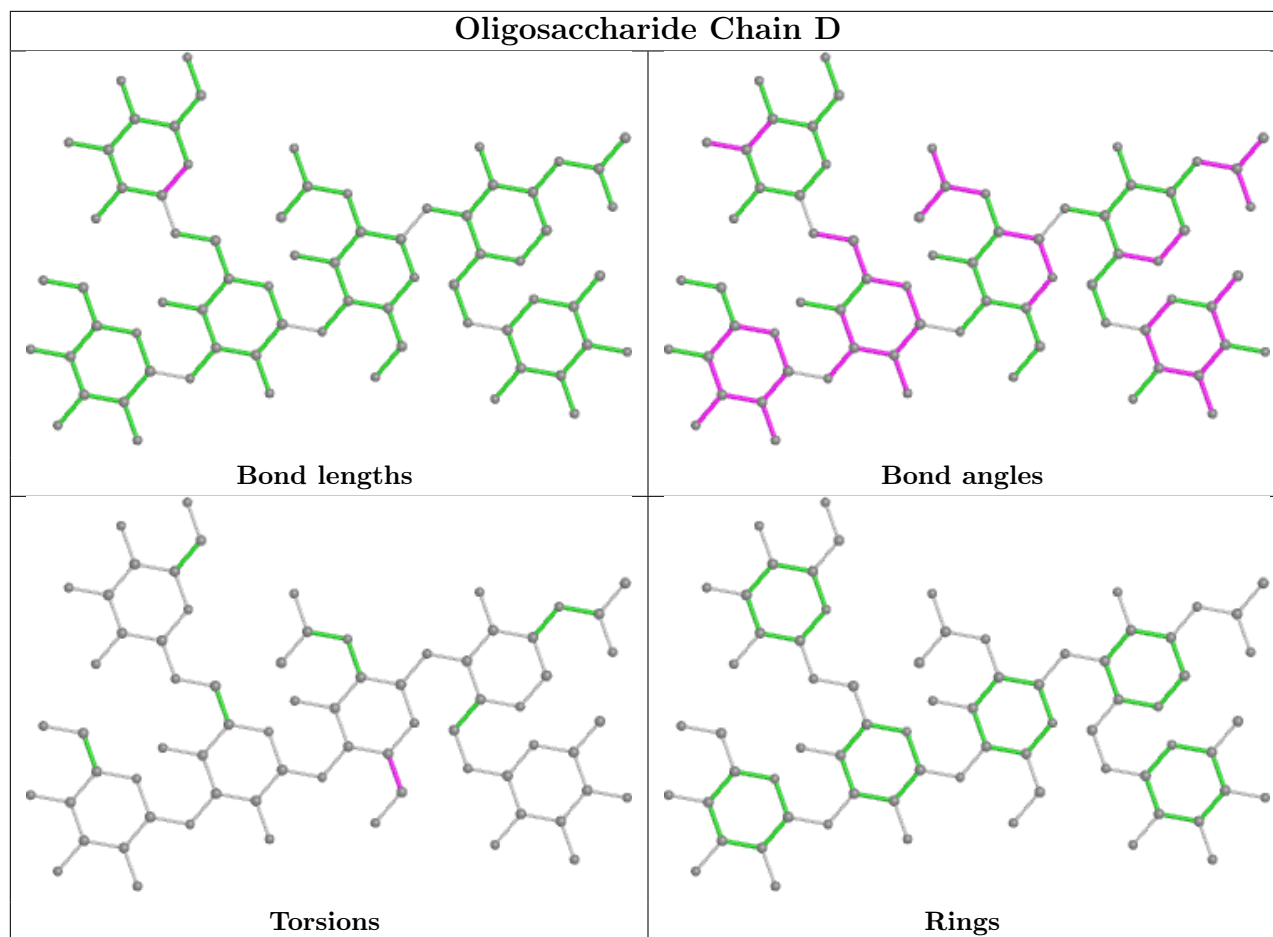
There are no ring outliers.

5 monomers are involved in 5 short contacts:

Mol	Chain	Res	Type	Clashes	Symm-Clashes
3	C	5	MAN	2	0
3	C	1	NAG	1	0
3	C	3	BMA	1	0
3	C	2	NAG	2	0
3	C	4	MAN	1	1

The following is a two-dimensional graphical depiction of Mogul quality analysis of bond lengths, bond angles, torsion angles, and ring geometry for oligosaccharide.





5.6 Ligand geometry [i](#)

8 ligands are modelled in this entry.

In the following table, the Counts columns list the number of bonds (or angles) for which Mogul statistics could be retrieved, the number of bonds (or angles) that are observed in the model and the number of bonds (or angles) that are defined in the Chemical Component Dictionary. The Link column lists molecule types, if any, to which the group is linked. The Z score for a bond length (or angle) is the number of standard deviations the observed value is removed from the expected value. A bond length (or angle) with $|Z| > 2$ is considered an outlier worth inspection. RMSZ is the root-mean-square of all Z scores of the bond lengths (or angles).

Mol	Type	Chain	Res	Link	Bond lengths			Bond angles		
					Counts	RMSZ	# $ Z > 2$	Counts	RMSZ	# $ Z > 2$
8	EDO	A	303	-	3,3,3	0.69	0	2,2,2	0.33	0
5	NAG	A	288	1	14,14,15	0.83	0	17,19,21	1.36	4 (23%)
8	EDO	A	302	-	3,3,3	0.60	0	2,2,2	0.42	0
8	EDO	B	100	-	3,3,3	0.75	0	2,2,2	0.61	0
8	EDO	A	304[A]	-	3,3,3	0.54	0	2,2,2	0.69	0
7	PLM	A	301	-	17,17,17	0.67	0	17,17,17	1.08	1 (5%)
8	EDO	A	304[B]	-	3,3,3	0.60	0	2,2,2	0.48	0

Mol	Type	Chain	Res	Link	Bond lengths			Bond angles		
					Counts	RMSZ	# Z > 2	Counts	RMSZ	# Z > 2
6	C6Q	A	300	-	47,47,47	0.88	2 (4%)	54,58,58	1.55	11 (20%)

In the following table, the Chirals column lists the number of chiral outliers, the number of chiral centers analysed, the number of these observed in the model and the number defined in the Chemical Component Dictionary. Similar counts are reported in the Torsion and Rings columns. '-' means no outliers of that kind were identified.

Mol	Type	Chain	Res	Link	Chirals	Torsions	Rings
8	EDO	A	303	-	-	0/1/1/1	-
5	NAG	A	288	1	-	0/6/23/26	0/1/1/1
8	EDO	A	302	-	-	1/1/1/1	-
8	EDO	B	100	-	-	0/1/1/1	-
8	EDO	A	304[A]	-	-	1/1/1/1	-
7	PLM	A	301	-	-	6/15/15/15	-
8	EDO	A	304[B]	-	-	0/1/1/1	-
6	C6Q	A	300	-	-	2/41/61/61	0/2/2/2

All (2) bond length outliers are listed below:

Mol	Chain	Res	Type	Atoms	Z	Observed(Å)	Ideal(Å)
6	A	300	C6Q	O18-C19	3.61	1.46	1.40
6	A	300	C6Q	C18-C17	2.15	1.56	1.51

All (16) bond angle outliers are listed below:

Mol	Chain	Res	Type	Atoms	Z	Observed(°)	Ideal(°)
6	A	300	C6Q	C18-O18-C19	4.24	122.02	113.74
6	A	300	C6Q	O19-C19-C20	-3.46	103.03	110.35
6	A	300	C6Q	C19-O19-C23	3.18	119.94	113.69
7	A	301	PLM	C4-C3-C2	-2.93	102.67	113.19
6	A	300	C6Q	O16-C16-C17	-2.78	102.32	108.98
6	A	300	C6Q	C24-C23-C22	-2.49	107.16	113.00
5	A	288	NAG	C4-C3-C2	2.33	114.44	111.02
6	A	300	C6Q	C13-C14-C15	-2.31	110.38	114.18
5	A	288	NAG	O5-C5-C4	-2.24	105.37	110.83
5	A	288	NAG	O3-C3-C2	-2.13	105.06	109.47
6	A	300	C6Q	O19-C23-C22	2.11	113.53	109.69
5	A	288	NAG	O5-C1-C2	2.09	114.59	111.29
6	A	300	C6Q	O25-C25-N	-2.08	119.44	122.95
6	A	300	C6Q	C29-C30-CI	-2.05	105.96	113.68
6	A	300	C6Q	O25-C25-C26	2.03	125.73	122.02

Continued on next page...

Continued from previous page...

Mol	Chain	Res	Type	Atoms	Z	Observed(°)	Ideal(°)
6	A	300	C6Q	C18-C17-C16	-2.02	108.74	112.71

There are no chirality outliers.

All (10) torsion outliers are listed below:

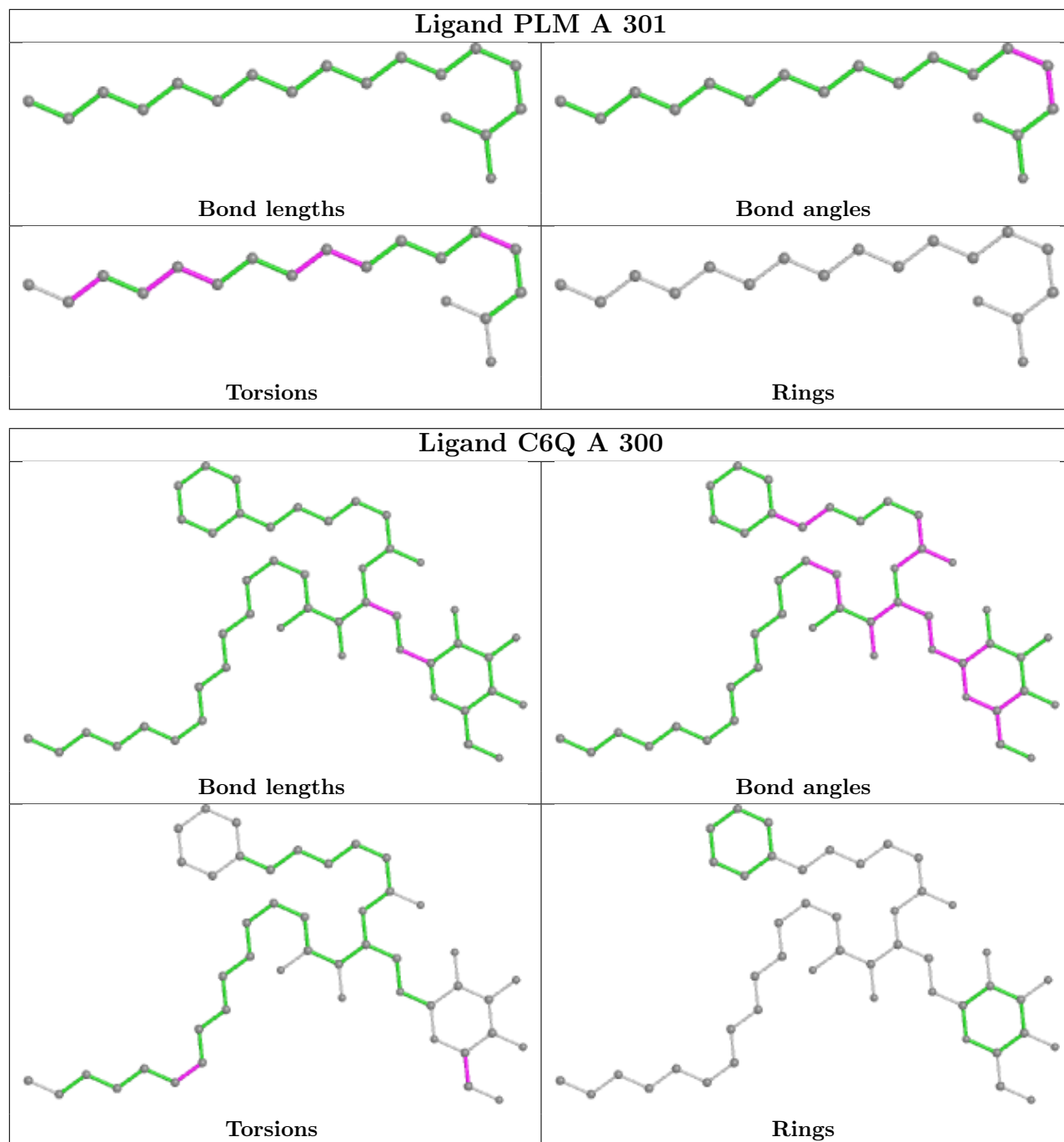
Mol	Chain	Res	Type	Atoms
7	A	301	PLM	C7-C8-C9-CA
7	A	301	PLM	C6-C7-C8-C9
7	A	301	PLM	CB-CC-CD-CE
7	A	301	PLM	CD-CE-CF-CG
6	A	300	C6Q	C22-C23-C24-O24
7	A	301	PLM	CA-CB-CC-CD
7	A	301	PLM	C2-C3-C4-C5
8	A	304[A]	EDO	O1-C1-C2-O2
6	A	300	C6Q	C5-C6-C7-C8
8	A	302	EDO	O1-C1-C2-O2

There are no ring outliers.

5 monomers are involved in 7 short contacts:

Mol	Chain	Res	Type	Clashes	Symm-Clashes
8	A	303	EDO	2	0
5	A	288	NAG	1	0
7	A	301	PLM	2	0
8	A	304[B]	EDO	1	0
6	A	300	C6Q	1	0

The following is a two-dimensional graphical depiction of Mogul quality analysis of bond lengths, bond angles, torsion angles, and ring geometry for all instances of the Ligand of Interest. In addition, ligands with molecular weight > 250 and outliers as shown on the validation Tables will also be included. For torsion angles, if less than 5% of the Mogul distribution of torsion angles is within 10 degrees of the torsion angle in question, then that torsion angle is considered an outlier. Any bond that is central to one or more torsion angles identified as an outlier by Mogul will be highlighted in the graph. For rings, the root-mean-square deviation (RMSD) between the ring in question and similar rings identified by Mogul is calculated over all ring torsion angles. If the average RMSD is greater than 60 degrees and the minimal RMSD between the ring in question and any Mogul-identified rings is also greater than 60 degrees, then that ring is considered an outlier. The outliers are highlighted in purple. The color gray indicates Mogul did not find sufficient equivalents in the CSD to analyse the geometry.



5.7 Other polymers [\(i\)](#)

There are no such residues in this entry.

5.8 Polymer linkage issues [\(i\)](#)

There are no chain breaks in this entry.

6 Fit of model and data

6.1 Protein, DNA and RNA chains

In the following table, the column labelled ‘#RSRZ > 2’ contains the number (and percentage) of RSRZ outliers, followed by percent RSRZ outliers for the chain as percentile scores relative to all X-ray entries and entries of similar resolution. The OWAB column contains the minimum, median, 95th percentile and maximum values of the occupancy-weighted average B-factor per residue. The column labelled ‘Q < 0.9’ lists the number of (and percentage) of residues with an average occupancy less than 0.9.

Mol	Chain	Analysed	<RSRZ>	#RSRZ>2	OWAB(Å ²)	Q<0.9
1	A	268/287 (93%)	0.50	25 (9%) 8 9	13, 19, 39, 56	0
2	B	99/99 (100%)	0.02	3 (3%) 50 54	13, 19, 31, 36	0
All	All	367/386 (95%)	0.37	28 (7%) 13 16	13, 19, 37, 56	0

All (28) RSRZ outliers are listed below:

Mol	Chain	Res	Type	RSRZ
1	A	108	PRO	8.7
1	A	203	HIS	6.7
1	A	255	ALA	6.6
1	A	110	ASN	6.3
1	A	280	GLY	6.2
1	A	281	SER	6.2
1	A	109	GLY	5.3
1	A	111	ALA	4.4
1	A	93	ASP	4.2
1	A	7	ASN	4.1
1	A	107	TYR	3.8
1	A	254	GLU	3.5
2	B	47	PRO	3.4
2	B	48	LYS	3.3
1	A	253	VAL	3.3
1	A	90	PRO	3.2
1	A	256	GLY	3.2
1	A	22	SER	3.1
1	A	204	ARG	3.1
1	A	252	ASP	2.7
1	A	21	ARG	2.6
2	B	1	ILE	2.6
1	A	259	ALA	2.5
1	A	271	GLY	2.2

Continued on next page...

Continued from previous page...

Mol	Chain	Res	Type	RSRZ
1	A	257	GLU	2.2
1	A	94	TYR	2.2
1	A	91	LYS	2.2
1	A	89	SER	2.1

6.2 Non-standard residues in protein, DNA, RNA chains [i](#)

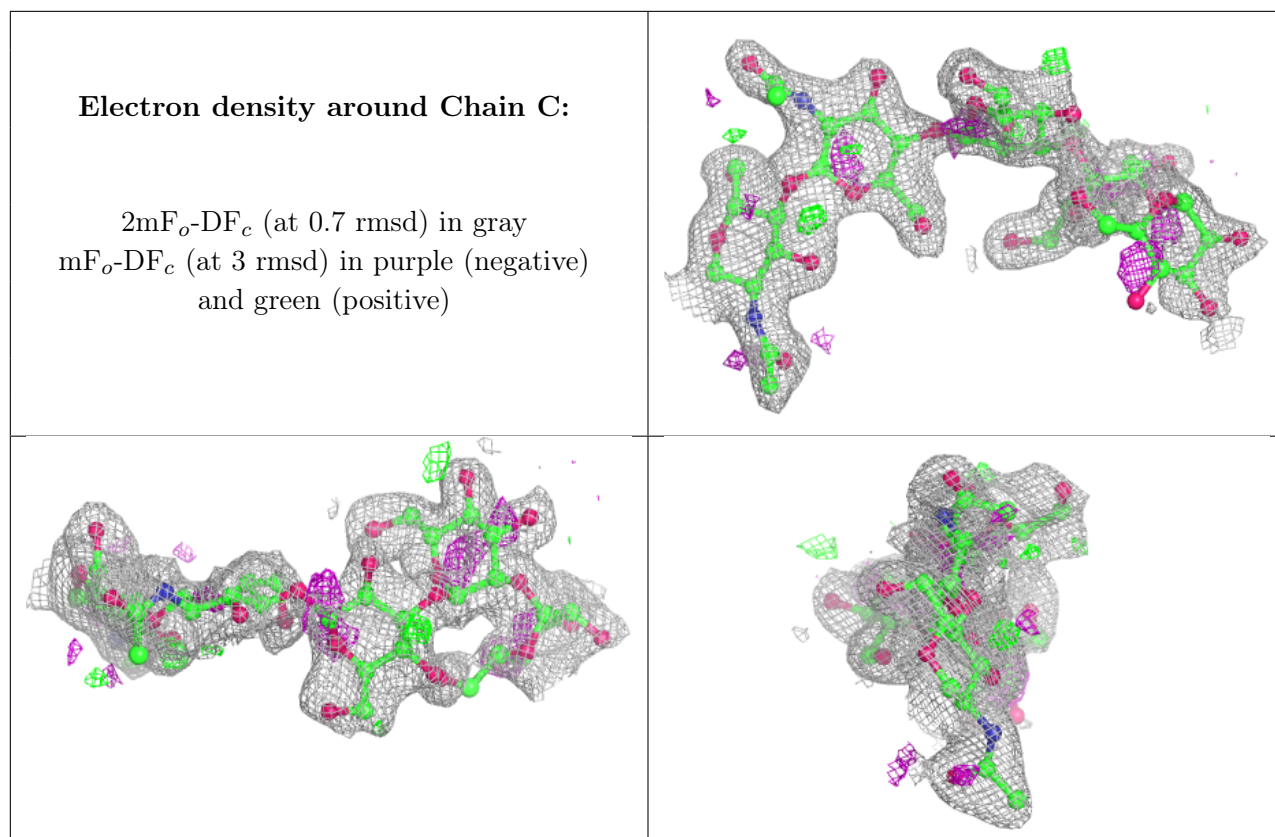
There are no non-standard protein/DNA/RNA residues in this entry.

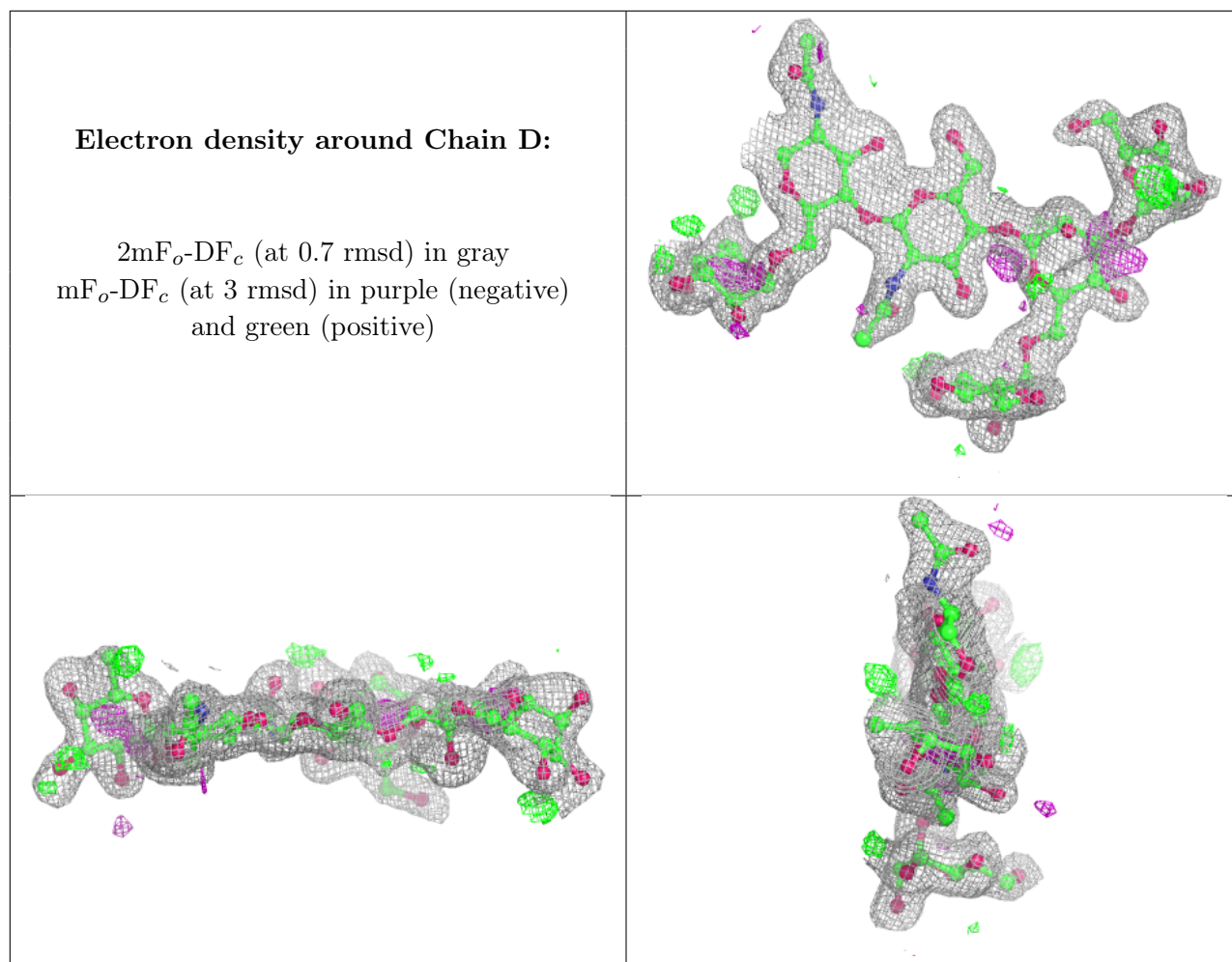
6.3 Carbohydrates [i](#)

In the following table, the Atoms column lists the number of modelled atoms in the group and the number defined in the chemical component dictionary. The B-factors column lists the minimum, median, 95th percentile and maximum values of B factors of atoms in the group. The column labelled 'Q< 0.9' lists the number of atoms with occupancy less than 0.9.

Mol	Type	Chain	Res	Atoms	RSCC	RSR	B-factors(Å ²)	Q<0.9
3	MAN	C	5	11/12	0.59	0.43	65,69,71,73	0
4	FUC	D	6	10/11	0.73	0.20	38,40,44,47	0
3	BMA	C	3	11/12	0.76	0.42	56,62,66,70	0
3	MAN	C	4	11/12	0.77	0.27	38,42,53,56	0
3	NAG	C	2	14/15	0.78	0.36	53,59,61,64	0
4	BMA	D	3	11/12	0.80	0.25	37,39,44,49	0
4	MAN	D	4	11/12	0.82	0.30	56,59,60,63	0
4	MAN	D	5	11/12	0.89	0.22	34,39,43,45	0
4	NAG	D	1	14/15	0.93	0.07	25,29,31,34	0
4	NAG	D	2	14/15	0.93	0.14	31,36,39,40	0
3	NAG	C	1	14/15	0.94	0.11	31,41,47,48	0

The following is a graphical depiction of the model fit to experimental electron density for oligosaccharide. Each fit is shown from different orientation to approximate a three-dimensional view.





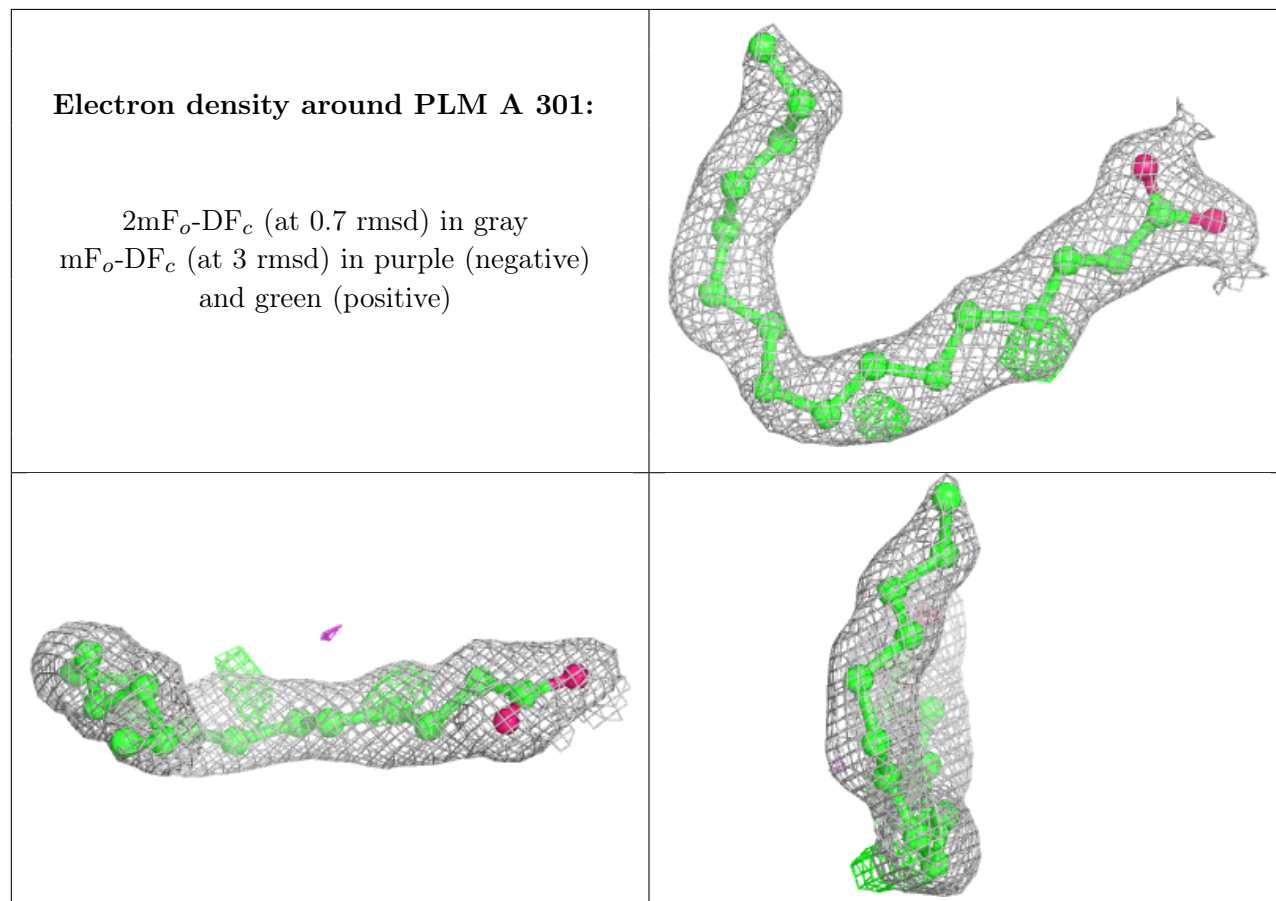
6.4 Ligands [i](#)

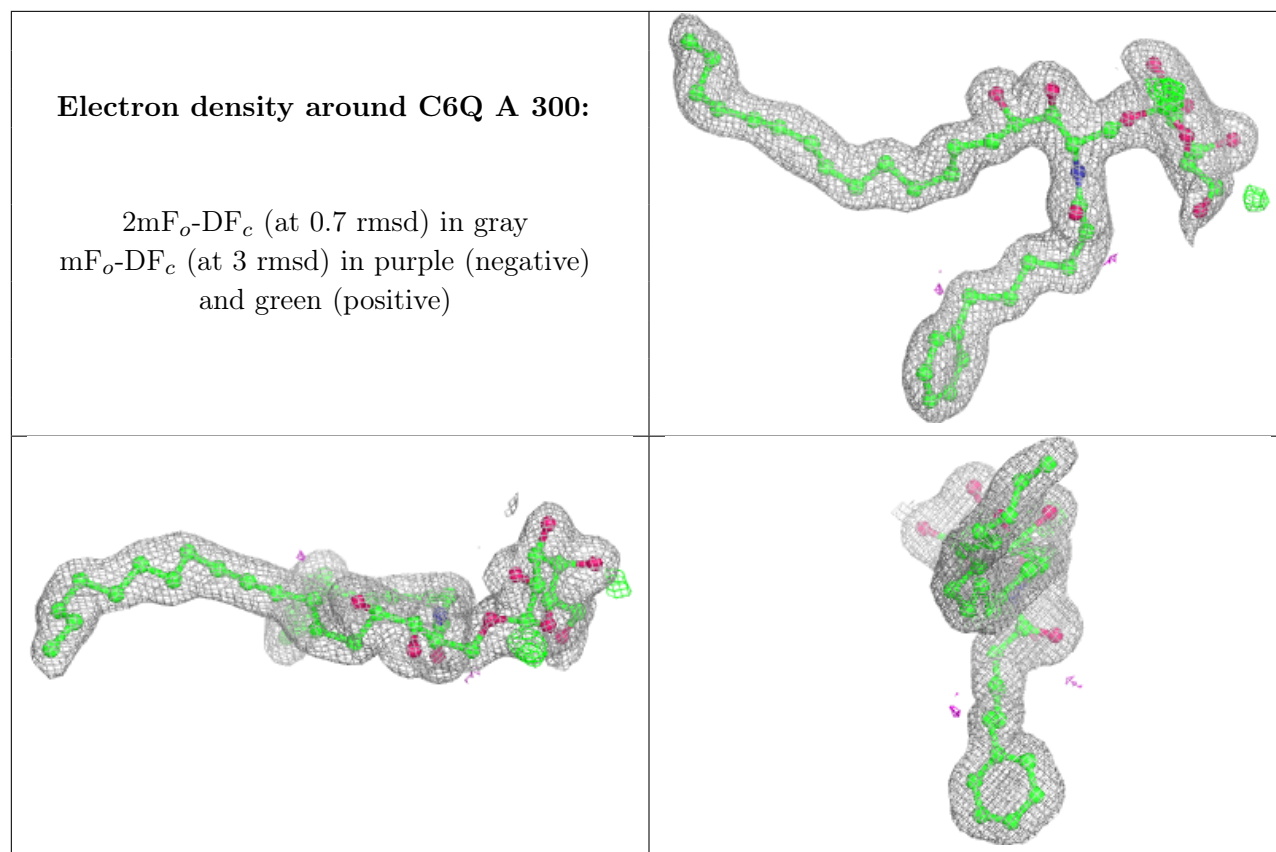
In the following table, the Atoms column lists the number of modelled atoms in the group and the number defined in the chemical component dictionary. The B-factors column lists the minimum, median, 95th percentile and maximum values of B factors of atoms in the group. The column labelled 'Q< 0.9' lists the number of atoms with occupancy less than 0.9.

Mol	Type	Chain	Res	Atoms	RSCC	RSR	B-factors(Å ²)	Q<0.9
5	NAG	A	288	14/15	0.63	0.45	57,64,73,74	0
7	PLM	A	301	18/18	0.83	0.24	35,41,44,45	0
8	EDO	A	304[A]	4/4	0.91	0.17	30,32,33,37	4
8	EDO	A	304[B]	4/4	0.91	0.17	25,27,27,30	4
6	C6Q	A	300	46/46	0.92	0.14	22,31,42,53	0
8	EDO	A	303	4/4	0.92	0.12	24,33,33,39	0
8	EDO	B	100	4/4	0.94	0.16	23,25,27,32	0
8	EDO	A	302	4/4	0.95	0.18	25,25,27,31	0

The following is a graphical depiction of the model fit to experimental electron density of all

instances of the Ligand of Interest. In addition, ligands with molecular weight > 250 and outliers as shown on the geometry validation Tables will also be included. Each fit is shown from different orientation to approximate a three-dimensional view.





6.5 Other polymers [i](#)

There are no such residues in this entry.