



Full wwPDB X-ray Structure Validation Report ⓘ

Jan 7, 2024 – 05:54 am GMT

PDB ID : 6GOG
Title : KRAS-169 Q61H GPPNHP
Authors : Cruz-Migoni, A.; Quevedo, C.E.; Carr, S.B.; Phillips, S.V.E.; Rabbitts, T.H.
Deposited on : 2018-06-01
Resolution : 2.05 Å(reported)

This is a Full wwPDB X-ray Structure Validation Report for a publicly released PDB entry.

We welcome your comments at validation@mail.wwpdb.org

A user guide is available at

<https://www.wwpdb.org/validation/2017/XrayValidationReportHelp>

with specific help available everywhere you see the ⓘ symbol.

The types of validation reports are described at

<http://www.wwpdb.org/validation/2017/FAQs#types>.

The following versions of software and data (see [references ⓘ](#)) were used in the production of this report:

MolProbity : 4.02b-467
Mogul : 1.8.4, CSD as541be (2020)
Xtriage (Phenix) : 1.13
EDS : 2.36
buster-report : 1.1.7 (2018)
Percentile statistics : 20191225.v01 (using entries in the PDB archive December 25th 2019)
Refmac : 5.8.0158
CCP4 : 7.0.044 (Gargrove)
Ideal geometry (proteins) : Engh & Huber (2001)
Ideal geometry (DNA, RNA) : Parkinson et al. (1996)
Validation Pipeline (wwPDB-VP) : 2.36

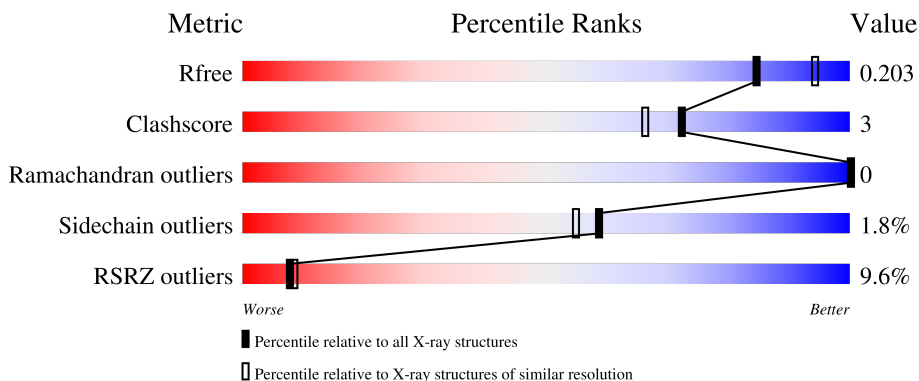
1 Overall quality at a glance

The following experimental techniques were used to determine the structure:

X-RAY DIFFRACTION

The reported resolution of this entry is 2.05 Å.

Percentile scores (ranging between 0-100) for global validation metrics of the entry are shown in the following graphic. The table shows the number of entries on which the scores are based.



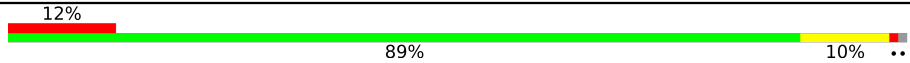
Metric	Whole archive (#Entries)	Similar resolution (#Entries, resolution range(Å))
R_{free}	130704	1692 (2.04-2.04)
Clashscore	141614	1773 (2.04-2.04)
Ramachandran outliers	138981	1752 (2.04-2.04)
Sidechain outliers	138945	1752 (2.04-2.04)
RSRZ outliers	127900	1672 (2.04-2.04)

The table below summarises the geometric issues observed across the polymeric chains and their fit to the electron density. The red, orange, yellow and green segments of the lower bar indicate the fraction of residues that contain outliers for ≥ 3 , 2, 1 and 0 types of geometric quality criteria respectively. A grey segment represents the fraction of residues that are not modelled. The numeric value for each fraction is indicated below the corresponding segment, with a dot representing fractions $\leq 5\%$. The upper red bar (where present) indicates the fraction of residues that have poor fit to the electron density. The numeric value is given above the bar.

Mol	Chain	Length	Quality of chain
1	A	173	 3% 88% 10% ..
1	B	173	 6% 92% 7% .
1	C	173	 13% 92% 6% ..
1	D	173	 14% 86% 10% ..
1	E	173	 9% 88% 9% ..

Continued on next page...

Continued from previous page...

Mol	Chain	Length	Quality of chain
1	F	173	

The following table lists non-polymeric compounds, carbohydrate monomers and non-standard residues in protein, DNA, RNA chains that are outliers for geometric or electron-density-fit criteria:

Mol	Type	Chain	Res	Chirality	Geometry	Clashes	Electron density
4	CIT	A	204	-	X	-	-

2 Entry composition

There are 5 unique types of molecules in this entry. The entry contains 9114 atoms, of which 0 are hydrogens and 0 are deuteriums.

In the tables below, the ZeroOcc column contains the number of atoms modelled with zero occupancy, the AltConf column contains the number of residues with at least one atom in alternate conformation and the Trace column contains the number of residues modelled with at most 2 atoms.

- Molecule 1 is a protein called GTPase KRas.

Mol	Chain	Residues	Atoms					ZeroOcc	AltConf	Trace
			Total	C	N	O	S			
1	A	170	1362	856	234	265	7	0	1	0
1	B	173	1380	870	238	265	7	0	1	0
1	C	172	1371	864	233	267	7	0	2	0
1	D	168	1340	842	234	258	6	0	1	0
1	E	171	1351	854	228	263	6	0	1	0
1	F	172	1380	866	237	270	7	0	3	0

There are 66 discrepancies between the modelled and reference sequences:

Chain	Residue	Modelled	Actual	Comment	Reference
A	-3	TYR	-	expression tag	UNP P01116
A	-2	PHE	-	expression tag	UNP P01116
A	-1	GLN	-	expression tag	UNP P01116
A	0	GLY	-	expression tag	UNP P01116
A	61	HIS	GLN	engineered mutation	UNP P01116
A	151	GLY	ARG	conflict	UNP P01116
A	153	ASP	GLU	conflict	UNP P01116
A	165	LYS	GLN	conflict	UNP P01116
A	166	HIS	TYR	conflict	UNP P01116
A	167	LYS	ARG	conflict	UNP P01116
A	168	GLU	LEU	conflict	UNP P01116
B	-3	TYR	-	expression tag	UNP P01116
B	-2	PHE	-	expression tag	UNP P01116
B	-1	GLN	-	expression tag	UNP P01116
B	0	GLY	-	expression tag	UNP P01116
B	61	HIS	GLN	engineered mutation	UNP P01116
B	151	GLY	ARG	conflict	UNP P01116

Continued on next page...

Continued from previous page...

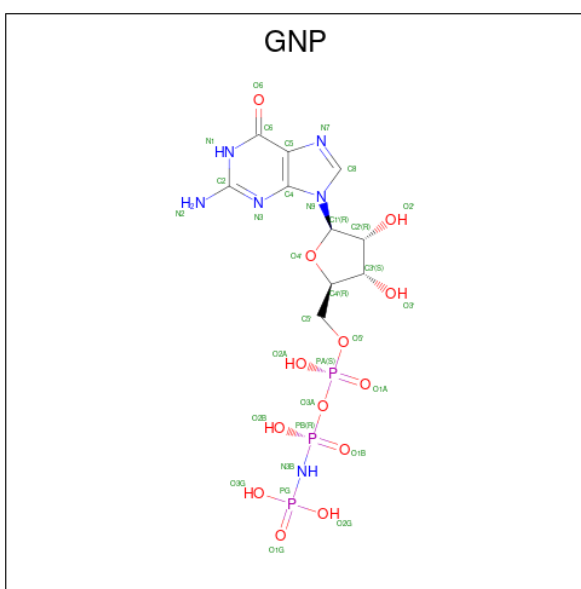
Chain	Residue	Modelled	Actual	Comment	Reference
B	153	ASP	GLU	conflict	UNP P01116
B	165	LYS	GLN	conflict	UNP P01116
B	166	HIS	TYR	conflict	UNP P01116
B	167	LYS	ARG	conflict	UNP P01116
B	168	GLU	LEU	conflict	UNP P01116
C	-3	TYR	-	expression tag	UNP P01116
C	-2	PHE	-	expression tag	UNP P01116
C	-1	GLN	-	expression tag	UNP P01116
C	0	GLY	-	expression tag	UNP P01116
C	61	HIS	GLN	engineered mutation	UNP P01116
C	151	GLY	ARG	conflict	UNP P01116
C	153	ASP	GLU	conflict	UNP P01116
C	165	LYS	GLN	conflict	UNP P01116
C	166	HIS	TYR	conflict	UNP P01116
C	167	LYS	ARG	conflict	UNP P01116
C	168	GLU	LEU	conflict	UNP P01116
D	-3	TYR	-	expression tag	UNP P01116
D	-2	PHE	-	expression tag	UNP P01116
D	-1	GLN	-	expression tag	UNP P01116
D	0	GLY	-	expression tag	UNP P01116
D	61	HIS	GLN	engineered mutation	UNP P01116
D	151	GLY	ARG	conflict	UNP P01116
D	153	ASP	GLU	conflict	UNP P01116
D	165	LYS	GLN	conflict	UNP P01116
D	166	HIS	TYR	conflict	UNP P01116
D	167	LYS	ARG	conflict	UNP P01116
D	168	GLU	LEU	conflict	UNP P01116
E	-3	TYR	-	expression tag	UNP P01116
E	-2	PHE	-	expression tag	UNP P01116
E	-1	GLN	-	expression tag	UNP P01116
E	0	GLY	-	expression tag	UNP P01116
E	61	HIS	GLN	engineered mutation	UNP P01116
E	151	GLY	ARG	conflict	UNP P01116
E	153	ASP	GLU	conflict	UNP P01116
E	165	LYS	GLN	conflict	UNP P01116
E	166	HIS	TYR	conflict	UNP P01116
E	167	LYS	ARG	conflict	UNP P01116
E	168	GLU	LEU	conflict	UNP P01116
F	-3	TYR	-	expression tag	UNP P01116
F	-2	PHE	-	expression tag	UNP P01116
F	-1	GLN	-	expression tag	UNP P01116
F	0	GLY	-	expression tag	UNP P01116

Continued on next page...

Continued from previous page...

Chain	Residue	Modelled	Actual	Comment	Reference
F	61	HIS	GLN	engineered mutation	UNP P01116
F	151	GLY	ARG	conflict	UNP P01116
F	153	ASP	GLU	conflict	UNP P01116
F	165	LYS	GLN	conflict	UNP P01116
F	166	HIS	TYR	conflict	UNP P01116
F	167	LYS	ARG	conflict	UNP P01116
F	168	GLU	LEU	conflict	UNP P01116

- Molecule 2 is PHOSPHOAMINOPHOSPHONIC ACID-GUANYLATE ESTER (three-letter code: GNP) (formula: $C_{10}H_{17}N_6O_{13}P_3$).

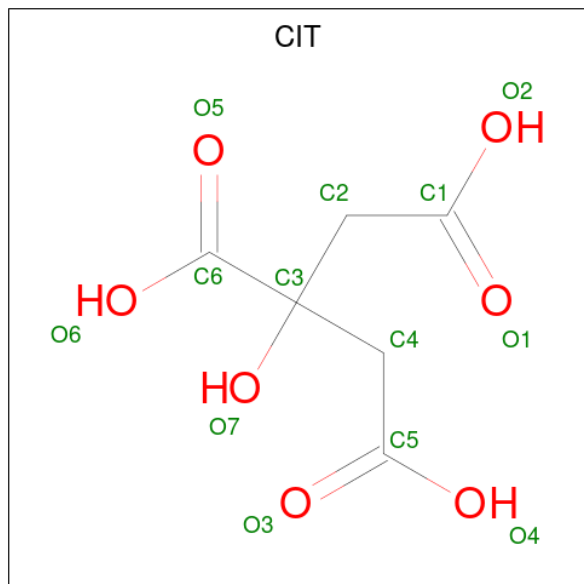


Mol	Chain	Residues	Atoms					ZeroOcc	AltConf
			Total	C	N	O	P		
2	A	1	Total	C	N	O	P	0	0
			32	10	6	13	3		
2	B	1	Total	C	N	O	P	0	0
			32	10	6	13	3		
2	C	1	Total	C	N	O	P	0	0
			32	10	6	13	3		
2	D	1	Total	C	N	O	P	0	0
			32	10	6	13	3		
2	E	1	Total	C	N	O	P	0	0
			32	10	6	13	3		
2	F	1	Total	C	N	O	P	0	0
			32	10	6	13	3		

- Molecule 3 is MAGNESIUM ION (three-letter code: MG) (formula: Mg).

Mol	Chain	Residues	Atoms	ZeroOcc	AltConf
3	A	1	Total Mg 1 1	0	0
3	B	1	Total Mg 1 1	0	0
3	C	1	Total Mg 1 1	0	0
3	D	1	Total Mg 1 1	0	0
3	E	1	Total Mg 1 1	0	0
3	F	1	Total Mg 1 1	0	0

- Molecule 4 is CITRIC ACID (three-letter code: CIT) (formula: C₆H₈O₇).



Mol	Chain	Residues	Atoms	ZeroOcc	AltConf
4	A	1	Total C O 13 6 7	0	0
4	A	1	Total C O 13 6 7	0	0
4	D	1	Total C O 13 6 7	0	0

- Molecule 5 is water.

Mol	Chain	Residues	Atoms	ZeroOcc	AltConf
5	A	167	Total O 167 167	0	0

Continued on next page...

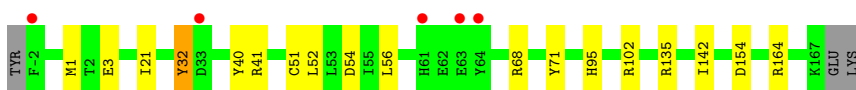
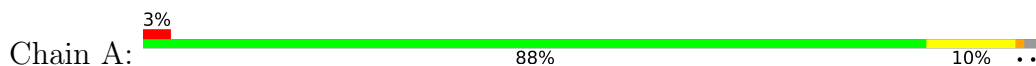
Continued from previous page...

Mol	Chain	Residues	Atoms		ZeroOcc	AltConf
5	B	157	Total 157	O 157	0	0
5	C	91	Total 91	O 91	0	0
5	D	85	Total 85	O 85	0	0
5	E	80	Total 80	O 80	0	0
5	F	113	Total 113	O 113	0	0

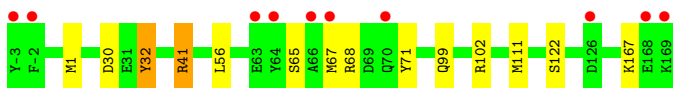
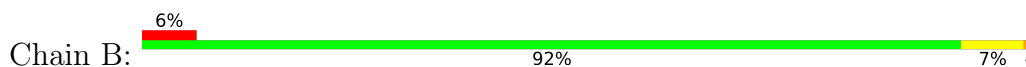
3 Residue-property plots [i](#)

These plots are drawn for all protein, RNA, DNA and oligosaccharide chains in the entry. The first graphic for a chain summarises the proportions of the various outlier classes displayed in the second graphic. The second graphic shows the sequence view annotated by issues in geometry and electron density. Residues are color-coded according to the number of geometric quality criteria for which they contain at least one outlier: green = 0, yellow = 1, orange = 2 and red = 3 or more. A red dot above a residue indicates a poor fit to the electron density ($RSRZ > 2$). Stretches of 2 or more consecutive residues without any outlier are shown as a green connector. Residues present in the sample, but not in the model, are shown in grey.

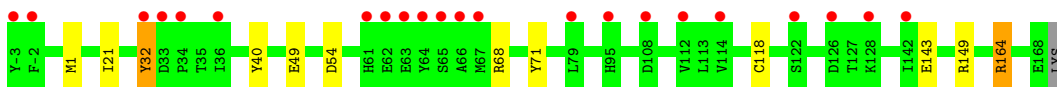
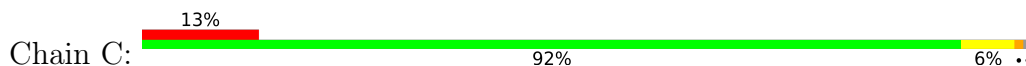
- Molecule 1: GTPase KRas



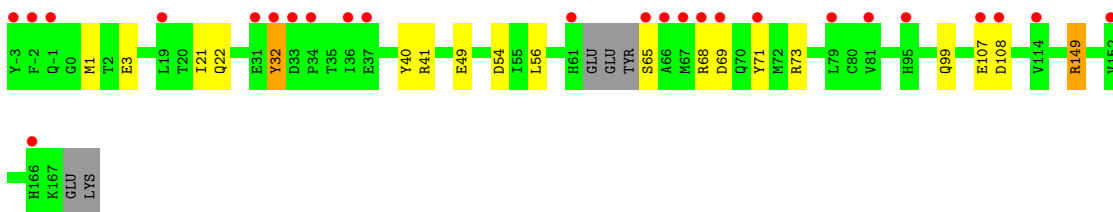
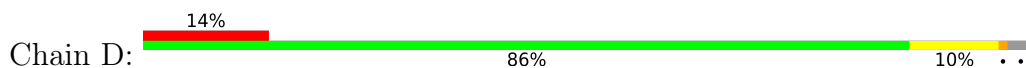
- Molecule 1: GTPase KRas



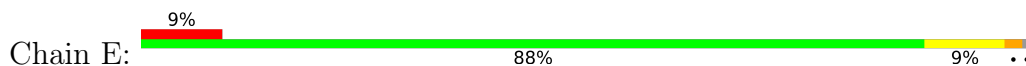
- Molecule 1: GTPase KRas

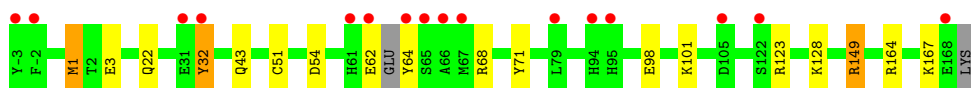


- Molecule 1: GTPase KRas

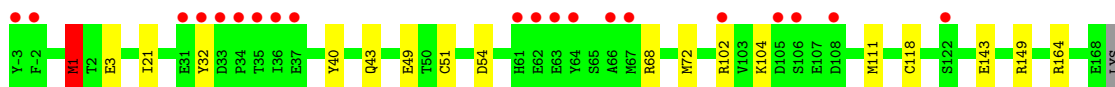
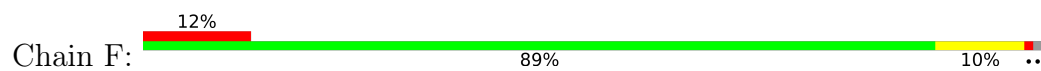


- Molecule 1: GTPase KRas





● Molecule 1: GTPase KRas



4 Data and refinement statistics

Property	Value	Source
Space group	P 21 21 21	Depositor
Cell constants a, b, c, α , β , γ	63.56Å 118.75Å 156.59Å 90.00° 90.00° 90.00°	Depositor
Resolution (Å)	29.47 – 2.05 29.45 – 2.05	Depositor EDS
% Data completeness (in resolution range)	98.8 (29.47-2.05) 98.8 (29.45-2.05)	Depositor EDS
R_{merge}	0.14	Depositor
R_{sym}	(Not available)	Depositor
$\langle I/\sigma(I) \rangle$ ¹	4.32 (at 2.04Å)	Xtrriage
Refinement program	REFMAC 5.8.0230	Depositor
R, R_{free}	0.171 , 0.191 0.185 , 0.203	Depositor DCC
R_{free} test set	3728 reflections (5.02%)	wwPDB-VP
Wilson B-factor (Å ²)	25.3	Xtrriage
Anisotropy	0.069	Xtrriage
Bulk solvent k_{sol} (e/Å ³), B_{sol} (Å ²)	0.35 , 54.4	EDS
L-test for twinning ²	$\langle L \rangle = 0.49$, $\langle L^2 \rangle = 0.32$	Xtrriage
Estimated twinning fraction	No twinning to report.	Xtrriage
F_o, F_c correlation	0.95	EDS
Total number of atoms	9114	wwPDB-VP
Average B, all atoms (Å ²)	32.0	wwPDB-VP

Xtrriage's analysis on translational NCS is as follows: *The largest off-origin peak in the Patterson function is 3.81% of the height of the origin peak. No significant pseudotranslation is detected.*

¹Intensities estimated from amplitudes.

²Theoretical values of $\langle |L| \rangle$, $\langle L^2 \rangle$ for acentric reflections are 0.5, 0.333 respectively for untwinned datasets, and 0.375, 0.2 for perfectly twinned datasets.

5 Model quality i

5.1 Standard geometry i

Bond lengths and bond angles in the following residue types are not validated in this section: GNP, MG, CIT

The Z score for a bond length (or angle) is the number of standard deviations the observed value is removed from the expected value. A bond length (or angle) with $|Z| > 5$ is considered an outlier worth inspection. RMSZ is the root-mean-square of all Z scores of the bond lengths (or angles).

Mol	Chain	Bond lengths		Bond angles	
		RMSZ	# Z >5	RMSZ	# Z >5
1	A	0.73	0/1388	0.89	3/1872 (0.2%)
1	B	0.73	1/1407 (0.1%)	0.82	2/1898 (0.1%)
1	C	0.61	0/1398	0.80	3/1889 (0.2%)
1	D	0.63	0/1365	0.83	3/1840 (0.2%)
1	E	0.57	0/1377	0.79	3/1859 (0.2%)
1	F	0.67	0/1407	0.83	3/1900 (0.2%)
All	All	0.66	1/8342 (0.0%)	0.83	17/11258 (0.2%)

Chiral center outliers are detected by calculating the chiral volume of a chiral center and verifying if the center is modelled as a planar moiety or with the opposite hand. A planarity outlier is detected by checking planarity of atoms in a peptide group, atoms in a mainchain group or atoms of a sidechain that are expected to be planar.

Mol	Chain	#Chirality outliers	#Planarity outliers
1	B	0	2
1	C	0	1
All	All	0	3

All (1) bond length outliers are listed below:

Mol	Chain	Res	Type	Atoms	Z	Observed(Å)	Ideal(Å)
1	B	167	LYS	C-N	-5.71	1.21	1.34

All (17) bond angle outliers are listed below:

Mol	Chain	Res	Type	Atoms	Z	Observed(°)	Ideal(°)
1	C	149	ARG	NE-CZ-NH2	-7.55	116.53	120.30
1	E	149	ARG	NE-CZ-NH2	-6.64	116.98	120.30
1	D	149	ARG	NE-CZ-NH2	-6.40	117.10	120.30
1	F	1	MET	CG-SD-CE	6.28	110.24	100.20

Continued on next page...

Continued from previous page...

Mol	Chain	Res	Type	Atoms	Z	Observed(°)	Ideal(°)
1	D	149	ARG	NE-CZ-NH1	5.97	123.28	120.30
1	A	32	TYR	CB-CG-CD2	-5.73	117.56	121.00
1	C	149	ARG	NE-CZ-NH1	5.72	123.16	120.30
1	E	123	ARG	NE-CZ-NH2	-5.72	117.44	120.30
1	B	111	MET	CG-SD-CE	-5.68	91.11	100.20
1	A	32	TYR	CB-CG-CD1	5.66	124.40	121.00
1	A	68	ARG	NE-CZ-NH2	-5.61	117.50	120.30
1	D	32	TYR	CB-CG-CD1	5.52	124.31	121.00
1	F	111	MET	CG-SD-CE	-5.40	91.56	100.20
1	E	32	TYR	CB-CG-CD1	5.29	124.17	121.00
1	B	32	TYR	CB-CG-CD1	5.18	124.11	121.00
1	F	149	ARG	NE-CZ-NH2	-5.14	117.73	120.30
1	C	32	TYR	CB-CG-CD1	5.03	124.02	121.00

There are no chirality outliers.

All (3) planarity outliers are listed below:

Mol	Chain	Res	Type	Group
1	B	102	ARG	Sidechain
1	B	41	ARG	Sidechain
1	C	164	ARG	Sidechain

5.2 Too-close contacts

In the following table, the Non-H and H(model) columns list the number of non-hydrogen atoms and hydrogen atoms in the chain respectively. The H(added) column lists the number of hydrogen atoms added and optimized by MolProbity. The Clashes column lists the number of clashes within the asymmetric unit, whereas Symm-Clashes lists symmetry-related clashes.

Mol	Chain	Non-H	H(model)	H(added)	Clashes	Symm-Clashes
1	A	1362	0	1343	9	0
1	B	1380	0	1358	8	0
1	C	1371	0	1331	7	0
1	D	1340	0	1319	13	1
1	E	1351	0	1314	10	1
1	F	1380	0	1338	12	0
2	A	32	0	13	0	0
2	B	32	0	13	0	0
2	C	32	0	13	0	0
2	D	32	0	13	0	0
2	E	32	0	13	0	0

Continued on next page...

Continued from previous page...

Mol	Chain	Non-H	H(model)	H(added)	Clashes	Symm-Clashes
2	F	32	0	13	0	0
3	A	1	0	0	0	0
3	B	1	0	0	0	0
3	C	1	0	0	0	0
3	D	1	0	0	0	0
3	E	1	0	0	0	0
3	F	1	0	0	0	0
4	A	26	0	10	1	0
4	D	13	0	5	1	0
5	A	167	0	0	1	0
5	B	157	0	0	4	1
5	C	91	0	0	0	1
5	D	85	0	0	1	0
5	E	80	0	0	1	0
5	F	113	0	0	3	0
All	All	9114	0	8096	56	2

The all-atom clashscore is defined as the number of clashes found per 1000 atoms (including hydrogen atoms). The all-atom clashscore for this structure is 3.

All (56) close contacts within the same asymmetric unit are listed below, sorted by their clash magnitude.

Atom-1	Atom-2	Interatomic distance (Å)	Clash overlap (Å)
1:C:49:GLU:OE2	1:C:164:ARG:NH2	2.07	0.87
1:D:108:ASP:OD1	1:D:108:ASP:O	1.93	0.87
1:F:1:MET:CE	1:F:43:GLN:OE1	2.27	0.82
1:F:49:GLU:OE2	1:F:164:ARG:NH2	2.14	0.80
1:A:3:GLU:OE2	1:A:54:ASP:OD2	2.01	0.78
1:E:3:GLU:OE2	1:E:54:ASP:OD2	2.02	0.77
1:D:3:GLU:OE2	1:D:54:ASP:OD2	2.03	0.76
1:D:108:ASP:O	1:D:108:ASP:CG	2.24	0.76
1:A:142:ILE:HD11	1:A:154:ASP:HB3	1.69	0.75
1:B:41:ARG:HH12	1:E:3:GLU:HB2	1.57	0.70
1:F:1:MET:HE1	1:F:43:GLN:OE1	1.91	0.69
1:E:98:GLU:OE2	1:E:101:LYS:NZ	2.25	0.69
1:F:1:MET:HE2	1:F:43:GLN:OE1	1.93	0.68
1:A:142:ILE:CD1	1:A:154:ASP:HB3	2.27	0.65
1:C:49:GLU:HB3	1:C:164:ARG:HH22	1.62	0.65
1:C:49:GLU:HB3	1:C:164:ARG:NH2	2.13	0.64
1:F:3:GLU:OE2	1:F:54[B]:ASP:OD2	2.16	0.64
1:F:118[B]:CYS:SG	1:F:143:GLU:HB3	2.38	0.64

Continued on next page...

Continued from previous page...

Atom-1	Atom-2	Interatomic distance (Å)	Clash overlap (Å)
1:B:41:ARG:NH1	1:E:3:GLU:OE1	2.32	0.63
1:C:118[B]:CYS:SG	1:C:143:GLU:HB3	2.44	0.57
1:E:167:LYS:CE	5:E:309:HOH:O	2.54	0.55
1:D:108:ASP:OD1	1:D:108:ASP:C	2.46	0.54
1:A:102:ARG:HE	4:A:204:CIT:C5	2.22	0.53
1:E:51:CYS:SG	1:E:164:ARG:NH2	2.82	0.52
1:A:56:LEU:HD21	1:A:71:TYR:CD1	2.45	0.51
1:D:69:ASP:HB3	1:D:73[B]:ARG:NH1	2.26	0.50
1:F:72:MET:O	1:F:104:LYS:HE2	2.12	0.50
1:B:56:LEU:CD2	1:B:71:TYR:HB2	2.41	0.50
1:D:99:GLN:HE21	4:D:203:CIT:C1	2.25	0.50
1:D:56:LEU:CD2	1:D:71:TYR:HB2	2.41	0.49
1:D:21:ILE:HD11	1:D:40:TYR:OH	2.13	0.48
1:A:51:CYS:SG	1:A:164:ARG:NH2	2.87	0.47
1:D:41:ARG:HD2	5:D:302:HOH:O	2.15	0.46
1:B:67:MET:HG2	5:B:434:HOH:O	2.15	0.45
1:D:22:GLN:HG3	1:D:149:ARG:HG3	1.98	0.45
1:C:21:ILE:HD11	1:C:40:TYR:OH	2.17	0.45
1:B:122:SER:HB2	5:B:432:HOH:O	2.17	0.44
1:D:68:ARG:HD3	1:D:99:GLN:OE1	2.17	0.44
1:E:1:MET:CE	1:E:43:GLN:OE1	2.65	0.44
1:F:21:ILE:HD11	1:F:40:TYR:OH	2.18	0.44
1:B:68:ARG:HD3	1:B:99:GLN:OE1	2.18	0.44
1:C:49:GLU:HG3	1:D:49:GLU:OE1	2.18	0.43
1:A:21[A]:ILE:HD11	1:A:40:TYR:OH	2.19	0.42
1:D:68:ARG:HA	1:D:71:TYR:CE2	2.54	0.42
1:F:68:ARG:CD	5:F:303:HOH:O	2.68	0.42
1:A:135:ARG:HD3	5:A:452:HOH:O	2.18	0.41
1:E:22:GLN:HG3	1:E:149:ARG:HG3	2.02	0.41
1:E:62:GLU:O	1:E:64:TYR:N	2.53	0.41
1:A:41:ARG:HG2	1:A:52:LEU:HD11	2.02	0.41
1:B:30:ASP:OD1	5:B:301:HOH:O	2.22	0.41
1:E:68:ARG:HA	1:E:71:TYR:CE2	2.55	0.41
1:F:51:CYS:SG	1:F:164:ARG:NH2	2.94	0.41
1:F:68:ARG:HD3	5:F:303:HOH:O	2.21	0.40
1:B:68:ARG:HD3	5:B:302:HOH:O	2.21	0.40
1:C:68:ARG:HA	1:C:71:TYR:CE2	2.56	0.40
1:F:102:ARG:HD3	5:F:361:HOH:O	2.22	0.40

All (2) symmetry-related close contacts are listed below. The label for Atom-2 includes the symmetry operator and encoded unit-cell translations to be applied.

Atom-1	Atom-2	Interatomic distance (Å)	Clash overlap (Å)
5:B:390:HOH:O	5:C:312:HOH:O[1_455]	1.92	0.28
1:D:107:GLU:OE2	1:E:128:LYS:CD[3_755]	2.08	0.12

5.3 Torsion angles [i](#)

5.3.1 Protein backbone [i](#)

In the following table, the Percentiles column shows the percent Ramachandran outliers of the chain as a percentile score with respect to all X-ray entries followed by that with respect to entries of similar resolution.

The Analysed column shows the number of residues for which the backbone conformation was analysed, and the total number of residues.

Mol	Chain	Analysed	Favoured	Allowed	Outliers	Percentiles	
1	A	169/173 (98%)	165 (98%)	4 (2%)	0	100	100
1	B	172/173 (99%)	168 (98%)	4 (2%)	0	100	100
1	C	172/173 (99%)	167 (97%)	5 (3%)	0	100	100
1	D	165/173 (95%)	161 (98%)	4 (2%)	0	100	100
1	E	168/173 (97%)	164 (98%)	4 (2%)	0	100	100
1	F	173/173 (100%)	169 (98%)	4 (2%)	0	100	100
All	All	1019/1038 (98%)	994 (98%)	25 (2%)	0	100	100

There are no Ramachandran outliers to report.

5.3.2 Protein sidechains [i](#)

In the following table, the Percentiles column shows the percent sidechain outliers of the chain as a percentile score with respect to all X-ray entries followed by that with respect to entries of similar resolution.

The Analysed column shows the number of residues for which the sidechain conformation was analysed, and the total number of residues.

Mol	Chain	Analysed	Rotameric	Outliers	Percentiles	
1	A	150/152 (99%)	147 (98%)	3 (2%)	55	50
1	B	150/152 (99%)	147 (98%)	3 (2%)	55	50
1	C	148/152 (97%)	145 (98%)	3 (2%)	55	50

Continued on next page...

Continued from previous page...

Mol	Chain	Analysed	Rotameric	Outliers	Percentiles	
1	D	146/152 (96%)	143 (98%)	3 (2%)	53	48
1	E	145/152 (95%)	143 (99%)	2 (1%)	67	65
1	F	150/152 (99%)	148 (99%)	2 (1%)	69	67
All	All	889/912 (98%)	873 (98%)	16 (2%)	59	55

All (16) residues with a non-rotameric sidechain are listed below:

Mol	Chain	Res	Type
1	A	1	MET
1	A	32	TYR
1	A	95	HIS
1	B	1	MET
1	B	32	TYR
1	B	65	SER
1	C	1	MET
1	C	32	TYR
1	C	54	ASP
1	D	1	MET
1	D	32	TYR
1	D	65	SER
1	E	1	MET
1	E	32	TYR
1	F	1	MET
1	F	32	TYR

Sometimes sidechains can be flipped to improve hydrogen bonding and reduce clashes. All (3) such sidechains are listed below:

Mol	Chain	Res	Type
1	C	129	GLN
1	D	-1	GLN
1	F	99	GLN

5.3.3 RNA [i](#)

There are no RNA molecules in this entry.

5.4 Non-standard residues in protein, DNA, RNA chains [i](#)

There are no non-standard protein/DNA/RNA residues in this entry.

5.5 Carbohydrates [i](#)

There are no monosaccharides in this entry.

5.6 Ligand geometry [i](#)

Of 15 ligands modelled in this entry, 6 are monoatomic - leaving 9 for Mogul analysis.

In the following table, the Counts columns list the number of bonds (or angles) for which Mogul statistics could be retrieved, the number of bonds (or angles) that are observed in the model and the number of bonds (or angles) that are defined in the Chemical Component Dictionary. The Link column lists molecule types, if any, to which the group is linked. The Z score for a bond length (or angle) is the number of standard deviations the observed value is removed from the expected value. A bond length (or angle) with $|Z| > 2$ is considered an outlier worth inspection. RMSZ is the root-mean-square of all Z scores of the bond lengths (or angles).

Mol	Type	Chain	Res	Link	Bond lengths			Bond angles		
					Counts	RMSZ	# Z > 2	Counts	RMSZ	# Z > 2
4	CIT	D	203	-	12,12,12	1.13	0	17,17,17	1.32	2 (11%)
2	GNP	B	201	3	29,34,34	1.44	7 (24%)	33,54,54	2.46	9 (27%)
2	GNP	A	201	3	29,34,34	1.87	6 (20%)	33,54,54	2.13	6 (18%)
4	CIT	A	204	-	12,12,12	1.60	1 (8%)	17,17,17	2.07	7 (41%)
2	GNP	C	201	3	29,34,34	1.44	5 (17%)	33,54,54	2.45	9 (27%)
2	GNP	D	201	3	29,34,34	1.73	5 (17%)	33,54,54	2.24	6 (18%)
2	GNP	F	201	3	29,34,34	1.55	5 (17%)	33,54,54	2.47	10 (30%)
2	GNP	E	201	3	29,34,34	1.69	7 (24%)	33,54,54	2.17	7 (21%)
4	CIT	A	203	-	12,12,12	1.40	1 (8%)	17,17,17	1.15	1 (5%)

In the following table, the Chirals column lists the number of chiral outliers, the number of chiral centers analysed, the number of these observed in the model and the number defined in the Chemical Component Dictionary. Similar counts are reported in the Torsion and Rings columns. '-' means no outliers of that kind were identified.

Mol	Type	Chain	Res	Link	Chirals	Torsions	Rings
4	CIT	D	203	-	-	9/16/16/16	-
2	GNP	B	201	3	-	3/14/38/38	0/3/3/3
2	GNP	A	201	3	-	3/14/38/38	0/3/3/3
4	CIT	A	204	-	-	12/16/16/16	-
2	GNP	C	201	3	-	5/14/38/38	0/3/3/3
2	GNP	D	201	3	-	5/14/38/38	0/3/3/3
2	GNP	F	201	3	-	5/14/38/38	0/3/3/3

Continued on next page...

Continued from previous page...

Mol	Type	Chain	Res	Link	Chirals	Torsions	Rings
2	GNP	E	201	3	-	3/14/38/38	0/3/3/3
4	CIT	A	203	-	-	0/16/16/16	-

All (37) bond length outliers are listed below:

Mol	Chain	Res	Type	Atoms	Z	Observed(Å)	Ideal(Å)
2	A	201	GNP	PG-O3G	-4.88	1.43	1.56
2	A	201	GNP	PB-O3A	4.73	1.65	1.59
2	E	201	GNP	C6-N1	4.48	1.40	1.33
2	F	201	GNP	C6-N1	4.48	1.40	1.33
2	D	201	GNP	PB-O3A	4.41	1.64	1.59
2	D	201	GNP	C6-N1	4.32	1.40	1.33
2	C	201	GNP	C6-N1	4.10	1.40	1.33
2	A	201	GNP	C6-N1	3.75	1.39	1.33
2	D	201	GNP	PG-O2G	-3.62	1.47	1.56
2	E	201	GNP	PG-O1G	3.61	1.51	1.46
2	F	201	GNP	PG-O3G	-3.51	1.47	1.56
2	B	201	GNP	PG-O2G	-3.45	1.47	1.56
2	F	201	GNP	PB-O1B	3.34	1.51	1.46
2	B	201	GNP	C6-N1	3.30	1.38	1.33
4	A	204	CIT	C3-C6	-3.25	1.50	1.53
2	E	201	GNP	PB-O2B	-3.24	1.48	1.56
2	C	201	GNP	PB-O1B	3.19	1.51	1.46
2	C	201	GNP	PB-O2B	-3.19	1.48	1.56
2	E	201	GNP	PG-O2G	-3.17	1.48	1.56
2	F	201	GNP	PG-O1G	3.14	1.51	1.46
2	D	201	GNP	PB-O2B	-3.06	1.48	1.56
2	A	201	GNP	PG-O1G	3.06	1.51	1.46
2	E	201	GNP	PB-O1B	2.94	1.50	1.46
2	A	201	GNP	PB-O2B	-2.89	1.49	1.56
2	D	201	GNP	PG-O1G	2.86	1.50	1.46
4	A	203	CIT	O6-C6	-2.78	1.19	1.30
2	A	201	GNP	C8-N7	-2.54	1.30	1.34
2	C	201	GNP	PB-O3A	2.40	1.62	1.59
2	B	201	GNP	PG-O3G	-2.27	1.50	1.56
2	E	201	GNP	PG-O3G	-2.26	1.50	1.56
2	F	201	GNP	C8-N7	-2.15	1.30	1.34
2	E	201	GNP	C8-N7	-2.06	1.31	1.34
2	B	201	GNP	C2-N1	2.06	1.39	1.35
2	C	201	GNP	PG-O3G	-2.06	1.51	1.56
2	B	201	GNP	PB-O1B	2.05	1.49	1.46
2	B	201	GNP	C8-N7	-2.02	1.31	1.34

Continued on next page...

Continued from previous page...

Mol	Chain	Res	Type	Atoms	Z	Observed(Å)	Ideal(Å)
2	B	201	GNP	PB-O3A	2.02	1.61	1.59

All (57) bond angle outliers are listed below:

Mol	Chain	Res	Type	Atoms	Z	Observed(°)	Ideal(°)
2	B	201	GNP	C5-C6-N1	-9.33	110.67	123.43
2	F	201	GNP	C5-C6-N1	-8.76	111.45	123.43
2	C	201	GNP	C5-C6-N1	-8.51	111.78	123.43
2	E	201	GNP	C5-C6-N1	-8.35	112.01	123.43
2	D	201	GNP	C5-C6-N1	-8.32	112.05	123.43
2	A	201	GNP	C5-C6-N1	-8.17	112.25	123.43
2	B	201	GNP	C2-N1-C6	6.36	126.04	115.93
2	C	201	GNP	C2-N1-C6	5.96	125.41	115.93
2	F	201	GNP	C2-N1-C6	5.52	124.70	115.93
2	D	201	GNP	C2-N1-C6	5.42	124.53	115.93
2	E	201	GNP	C2-N1-C6	5.14	124.09	115.93
2	A	201	GNP	C2-N1-C6	5.11	124.05	115.93
2	C	201	GNP	O2B-PB-O1B	5.02	120.45	109.92
2	D	201	GNP	O2B-PB-O1B	4.34	119.01	109.92
4	A	204	CIT	C4-C3-C6	-4.26	100.95	110.11
2	D	201	GNP	O1G-PG-N3B	-4.12	105.71	111.77
4	A	204	CIT	C3-C4-C5	-3.94	104.28	113.81
2	F	201	GNP	O3G-PG-O1G	-3.79	103.92	113.45
2	C	201	GNP	O2G-PG-O1G	-3.78	103.95	113.45
2	A	201	GNP	O2B-PB-O1B	3.77	117.82	109.92
2	E	201	GNP	O2B-PB-O1B	3.73	117.74	109.92
2	A	201	GNP	O1G-PG-N3B	-3.69	106.34	111.77
2	F	201	GNP	O1G-PG-N3B	-3.61	106.45	111.77
2	B	201	GNP	O2B-PB-O1B	3.35	116.94	109.92
2	F	201	GNP	O2B-PB-O1B	3.31	116.87	109.92
2	B	201	GNP	O1G-PG-N3B	-3.26	106.97	111.77
2	F	201	GNP	O2G-PG-O3G	3.24	116.26	107.64
2	B	201	GNP	N3-C2-N1	-3.09	123.09	127.22
2	C	201	GNP	N3-C2-N1	-3.08	123.12	127.22
2	F	201	GNP	O2G-PG-O1G	-3.07	105.73	113.45
4	A	204	CIT	O7-C3-C6	3.04	113.13	108.86
2	F	201	GNP	N3-C2-N1	-3.01	123.20	127.22
2	E	201	GNP	O2G-PG-O1G	-2.98	105.95	113.45
2	B	201	GNP	C2-N3-C4	-2.91	112.04	115.36
2	D	201	GNP	N3-C2-N1	-2.89	123.37	127.22
2	C	201	GNP	O3G-PG-O1G	-2.82	106.36	113.45
2	C	201	GNP	O2G-PG-O3G	2.80	115.09	107.64

Continued on next page...

Continued from previous page...

Mol	Chain	Res	Type	Atoms	Z	Observed(°)	Ideal(°)
4	A	203	CIT	C3-C2-C1	2.76	120.49	113.81
2	E	201	GNP	O3G-PG-O1G	-2.72	106.61	113.45
2	E	201	GNP	C2-N3-C4	-2.70	112.28	115.36
2	B	201	GNP	O2G-PG-O3G	2.61	114.58	107.64
2	A	201	GNP	N3-C2-N1	-2.60	123.75	127.22
4	A	204	CIT	C4-C3-C2	2.60	115.93	109.16
2	C	201	GNP	C2-N3-C4	-2.53	112.46	115.36
2	E	201	GNP	N3-C2-N1	-2.52	123.86	127.22
4	D	203	CIT	O6-C6-C3	2.48	117.35	113.05
2	F	201	GNP	C2-N3-C4	-2.48	112.53	115.36
4	A	204	CIT	C3-C2-C1	-2.43	107.92	113.81
4	A	204	CIT	O5-C6-C3	-2.35	118.93	122.25
2	A	201	GNP	C2-N3-C4	-2.22	112.82	115.36
2	C	201	GNP	C4-C5-C6	-2.21	118.69	120.80
2	D	201	GNP	C2-N3-C4	-2.20	112.84	115.36
2	B	201	GNP	O1B-PB-N3B	-2.12	108.64	111.77
2	B	201	GNP	O2G-PG-O1G	-2.11	108.15	113.45
4	D	203	CIT	O5-C6-C3	-2.10	119.28	122.25
4	A	204	CIT	O6-C6-C3	2.02	116.55	113.05
2	F	201	GNP	O2A-PA-O1A	2.00	122.14	112.24

There are no chirality outliers.

All (45) torsion outliers are listed below:

Mol	Chain	Res	Type	Atoms
2	A	201	GNP	PG-N3B-PB-O1B
2	A	201	GNP	PA-O3A-PB-O1B
2	A	201	GNP	PA-O3A-PB-O2B
2	B	201	GNP	PG-N3B-PB-O1B
2	B	201	GNP	PA-O3A-PB-O1B
2	B	201	GNP	PA-O3A-PB-O2B
2	C	201	GNP	PB-N3B-PG-O1G
2	C	201	GNP	PG-N3B-PB-O1B
2	C	201	GNP	PA-O3A-PB-O1B
2	D	201	GNP	PB-N3B-PG-O1G
2	D	201	GNP	PG-N3B-PB-O1B
2	D	201	GNP	PA-O3A-PB-O1B
2	D	201	GNP	PA-O3A-PB-O2B
2	E	201	GNP	PB-N3B-PG-O1G
2	E	201	GNP	PG-N3B-PB-O1B
2	F	201	GNP	PB-N3B-PG-O1G
2	F	201	GNP	PG-N3B-PB-O1B

Continued on next page...

Continued from previous page...

Mol	Chain	Res	Type	Atoms
2	F	201	GNP	PG-N3B-PB-O3A
2	F	201	GNP	PA-O3A-PB-O1B
4	A	204	CIT	O7-C3-C6-O5
4	A	204	CIT	O7-C3-C6-O6
4	D	203	CIT	C1-C2-C3-O7
4	D	203	CIT	C1-C2-C3-C4
4	D	203	CIT	C1-C2-C3-C6
4	D	203	CIT	O7-C3-C6-O5
4	D	203	CIT	O7-C3-C6-O6
4	D	203	CIT	C4-C3-C6-O5
4	D	203	CIT	C4-C3-C6-O6
4	A	204	CIT	C2-C3-C6-O5
4	A	204	CIT	C1-C2-C3-C6
4	A	204	CIT	C6-C3-C4-C5
4	A	204	CIT	C1-C2-C3-O7
4	A	204	CIT	C2-C3-C4-C5
4	A	204	CIT	O7-C3-C4-C5
4	A	204	CIT	C2-C3-C6-O6
4	D	203	CIT	C3-C4-C5-O4
4	A	204	CIT	C1-C2-C3-C4
4	D	203	CIT	C3-C4-C5-O3
4	A	204	CIT	C4-C3-C6-O5
4	A	204	CIT	C4-C3-C6-O6
2	C	201	GNP	PA-O3A-PB-O2B
2	F	201	GNP	PA-O3A-PB-O2B
2	C	201	GNP	PG-N3B-PB-O3A
2	D	201	GNP	PG-N3B-PB-O3A
2	E	201	GNP	PG-N3B-PB-O3A

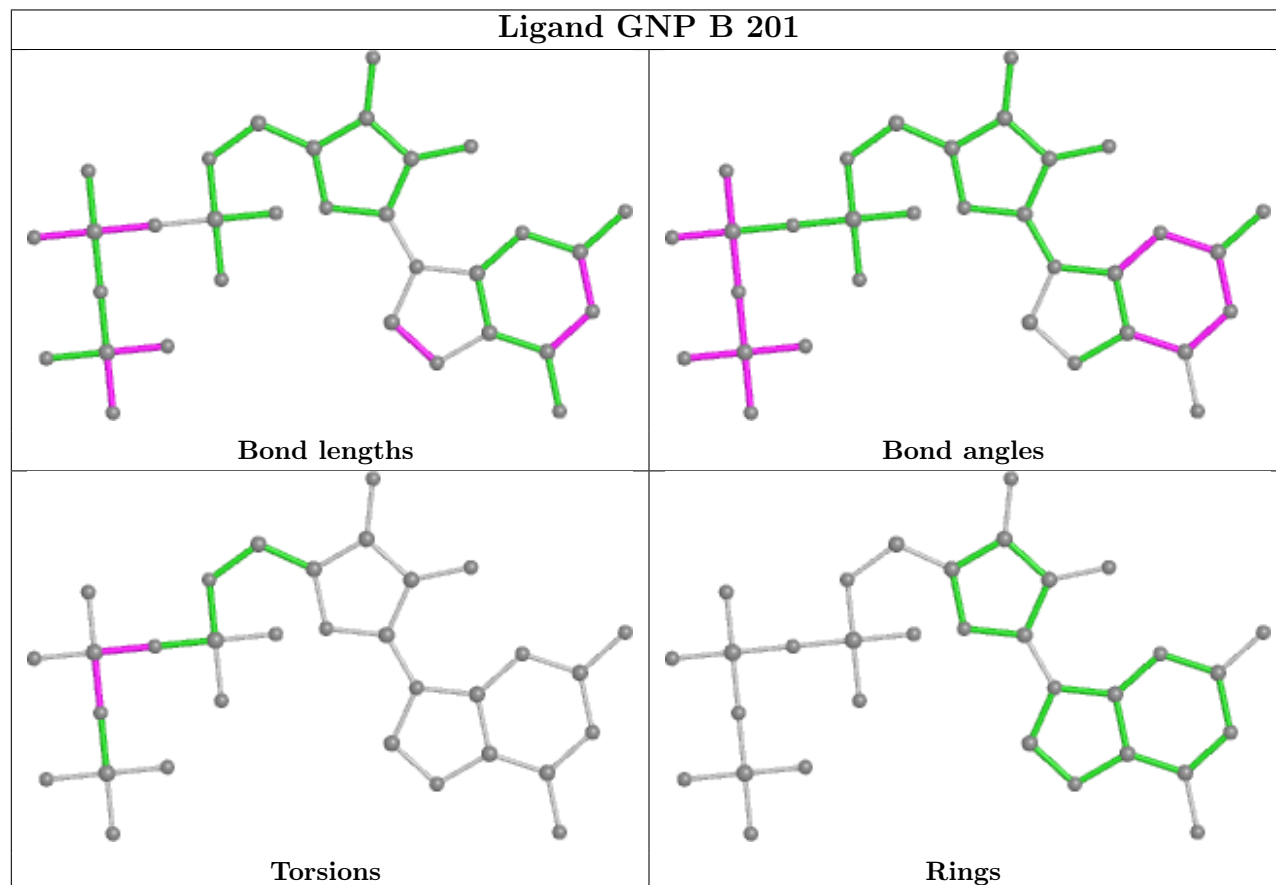
There are no ring outliers.

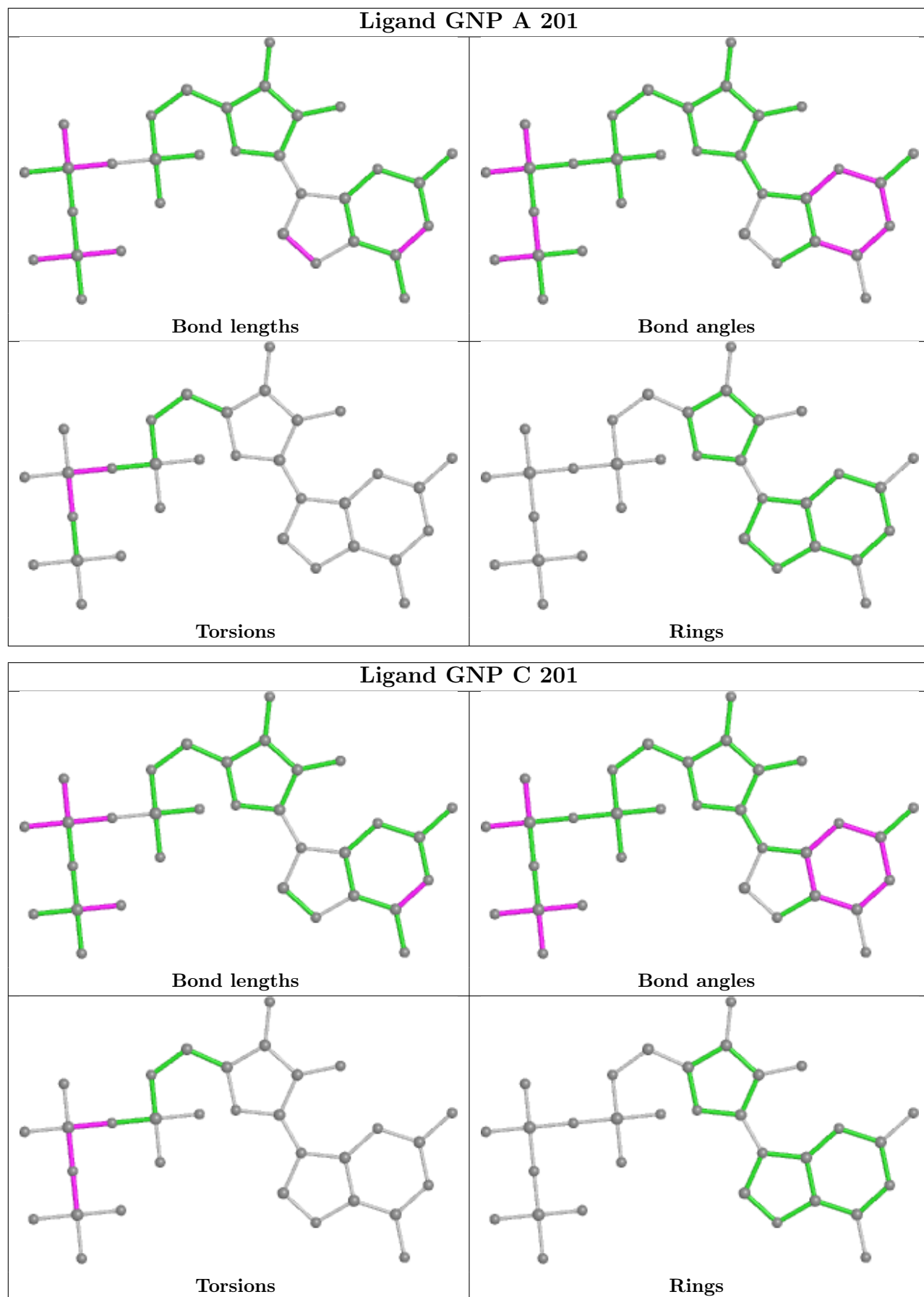
2 monomers are involved in 2 short contacts:

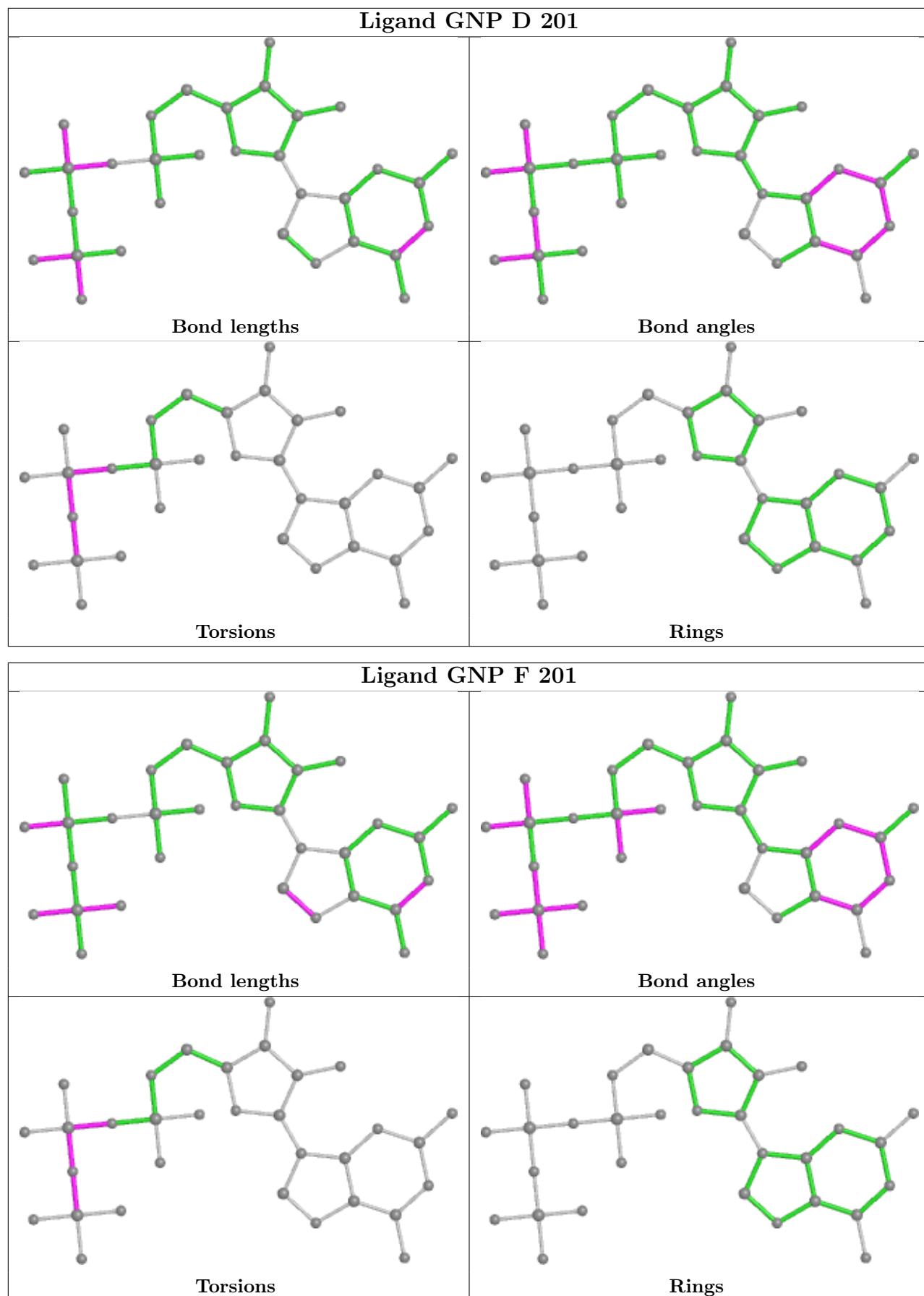
Mol	Chain	Res	Type	Clashes	Symm-Clashes
4	D	203	CIT	1	0
4	A	204	CIT	1	0

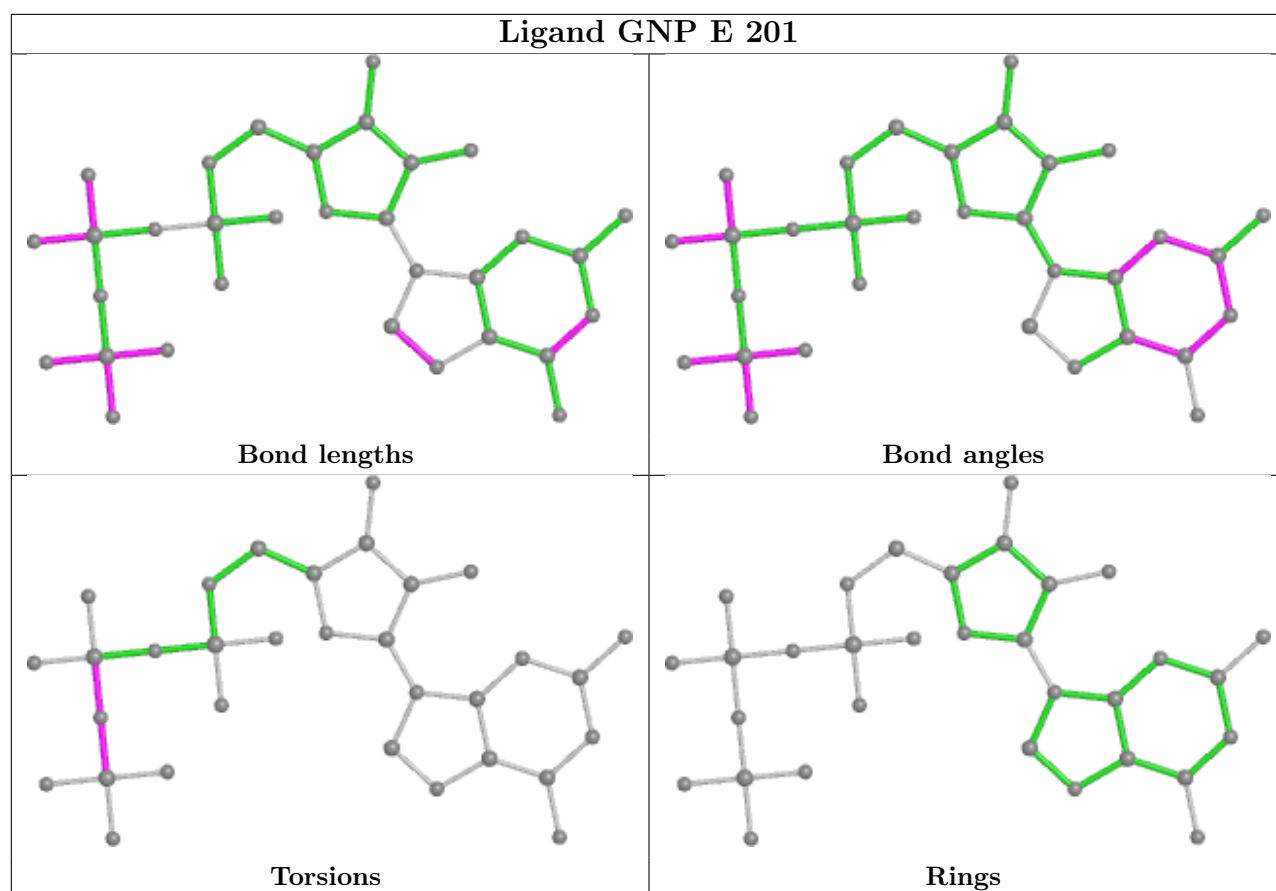
The following is a two-dimensional graphical depiction of Mogul quality analysis of bond lengths, bond angles, torsion angles, and ring geometry for all instances of the Ligand of Interest. In addition, ligands with molecular weight > 250 and outliers as shown on the validation Tables will also be included. For torsion angles, if less than 5% of the Mogul distribution of torsion angles is within 10 degrees of the torsion angle in question, then that torsion angle is considered an outlier. Any bond that is central to one or more torsion angles identified as an outlier by Mogul will be

highlighted in the graph. For rings, the root-mean-square deviation (RMSD) between the ring in question and similar rings identified by Mogul is calculated over all ring torsion angles. If the average RMSD is greater than 60 degrees and the minimal RMSD between the ring in question and any Mogul-identified rings is also greater than 60 degrees, then that ring is considered an outlier. The outliers are highlighted in purple. The color gray indicates Mogul did not find sufficient equivalents in the CSD to analyse the geometry.









5.7 Other polymers [i](#)

There are no such residues in this entry.

5.8 Polymer linkage issues [i](#)

There are no chain breaks in this entry.

6 Fit of model and data [i](#)

6.1 Protein, DNA and RNA chains [i](#)

In the following table, the column labelled '#RSRZ > 2' contains the number (and percentage) of RSRZ outliers, followed by percent RSRZ outliers for the chain as percentile scores relative to all X-ray entries and entries of similar resolution. The OWAB column contains the minimum, median, 95th percentile and maximum values of the occupancy-weighted average B-factor per residue. The column labelled 'Q < 0.9' lists the number of (and percentage) of residues with an average occupancy less than 0.9.

Mol	Chain	Analysed	<RSRZ>	#RSRZ>2	OWAB(Å ²)	Q<0.9
1	A	170/173 (98%)	0.07	5 (2%) 51 56	12, 20, 44, 62	0
1	B	173/173 (100%)	0.26	10 (5%) 23 25	14, 23, 54, 82	0
1	C	172/173 (99%)	0.55	22 (12%) 3 3	18, 31, 59, 99	0
1	D	168/173 (97%)	0.83	25 (14%) 2 1	17, 31, 59, 102	0
1	E	171/173 (98%)	0.61	16 (9%) 8 9	20, 33, 65, 118	0
1	F	172/173 (99%)	0.65	20 (11%) 4 4	15, 26, 66, 110	0
All	All	1026/1038 (98%)	0.49	98 (9%) 8 8	12, 27, 60, 118	0

All (98) RSRZ outliers are listed below:

Mol	Chain	Res	Type	RSRZ
1	C	64	TYR	12.1
1	D	-3	TYR	11.9
1	F	-3	TYR	11.5
1	E	64	TYR	10.3
1	F	64	TYR	10.2
1	B	64	TYR	8.8
1	F	66	ALA	6.7
1	E	-3	TYR	6.5
1	D	66	ALA	6.5
1	C	-3	TYR	6.4
1	F	63	GLU	5.5
1	E	61	HIS	5.1
1	D	32	TYR	5.0
1	F	36	ILE	5.0
1	C	63	GLU	5.0
1	D	61	HIS	4.8
1	F	61	HIS	4.7
1	A	61	HIS	4.6
1	B	-3	TYR	4.6

Continued on next page...

Continued from previous page...

Mol	Chain	Res	Type	RSRZ
1	D	-2	PHE	4.5
1	E	105	ASP	4.3
1	E	32	TYR	4.3
1	F	-2	PHE	4.2
1	D	67	MET	4.0
1	F	67	MET	4.0
1	E	168	GLU	4.0
1	F	105	ASP	3.9
1	F	33	ASP	3.7
1	F	32	TYR	3.7
1	D	65	SER	3.6
1	E	31	GLU	3.6
1	E	65	SER	3.5
1	A	64	TYR	3.5
1	F	62	GLU	3.5
1	E	66	ALA	3.5
1	E	67	MET	3.4
1	D	108	ASP	3.4
1	C	66	ALA	3.4
1	B	67	MET	3.4
1	D	33	ASP	3.3
1	C	67	MET	3.3
1	D	81	VAL	3.3
1	F	34	PRO	3.3
1	C	61	HIS	3.2
1	A	63	GLU	3.2
1	C	62	GLU	3.2
1	F	31	GLU	3.1
1	E	95	HIS	3.1
1	D	71	TYR	3.0
1	D	37	GLU	2.9
1	B	-2	PHE	2.9
1	C	36	ILE	2.9
1	D	166	HIS	2.9
1	B	169	LYS	2.9
1	D	34	PRO	2.8
1	C	142[A]	ILE	2.8
1	D	19	LEU	2.8
1	C	122	SER	2.8
1	F	106	SER	2.8
1	E	-2	PHE	2.7
1	D	79	LEU	2.7

Continued on next page...

Continued from previous page...

Mol	Chain	Res	Type	RSRZ
1	F	102	ARG	2.7
1	C	126	ASP	2.7
1	C	33	ASP	2.6
1	C	65	SER	2.6
1	B	70	GLN	2.6
1	D	152	VAL	2.6
1	B	63	GLU	2.6
1	A	-2	PHE	2.5
1	D	68	ARG	2.5
1	D	69	ASP	2.5
1	F	35	THR	2.5
1	C	-2	PHE	2.4
1	D	31	GLU	2.4
1	D	95	HIS	2.4
1	D	-1	GLN	2.4
1	C	79	LEU	2.4
1	F	122	SER	2.4
1	B	66	ALA	2.3
1	F	37	GLU	2.3
1	E	79	LEU	2.2
1	D	114	VAL	2.2
1	D	36	ILE	2.2
1	E	62	GLU	2.2
1	C	108	ASP	2.2
1	A	33	ASP	2.1
1	F	108	ASP	2.1
1	C	128	LYS	2.1
1	B	126	ASP	2.1
1	C	112	VAL	2.1
1	E	122	SER	2.1
1	B	168	GLU	2.0
1	D	107	GLU	2.0
1	C	34	PRO	2.0
1	E	94	HIS	2.0
1	C	32	TYR	2.0
1	C	95	HIS	2.0
1	C	114	VAL	2.0

6.2 Non-standard residues in protein, DNA, RNA chains [i](#)

There are no non-standard protein/DNA/RNA residues in this entry.

6.3 Carbohydrates [i](#)

There are no monosaccharides in this entry.

6.4 Ligands [i](#)

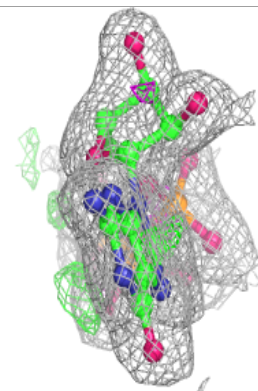
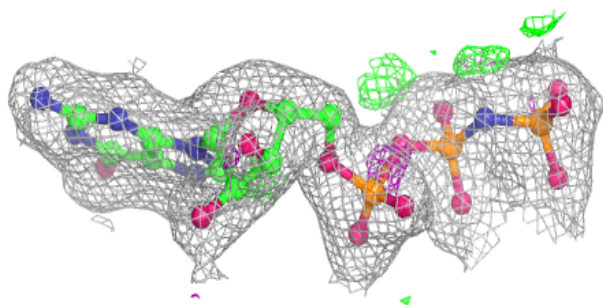
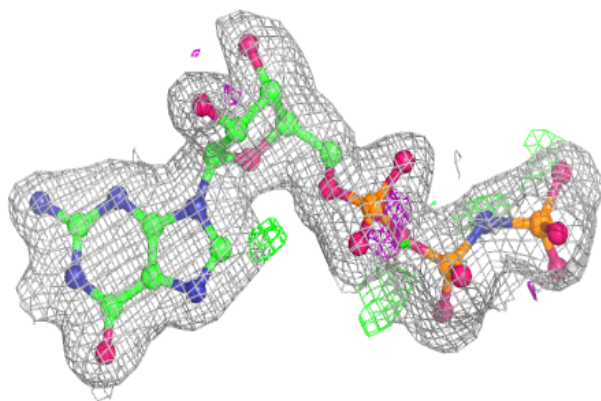
In the following table, the Atoms column lists the number of modelled atoms in the group and the number defined in the chemical component dictionary. The B-factors column lists the minimum, median, 95th percentile and maximum values of B factors of atoms in the group. The column labelled 'Q< 0.9' lists the number of atoms with occupancy less than 0.9.

Mol	Type	Chain	Res	Atoms	RSCC	RSR	B-factors(Å ²)	Q<0.9
4	CIT	D	203	13/13	0.77	0.35	57,76,82,88	0
4	CIT	A	204	13/13	0.80	0.39	39,63,84,87	0
3	MG	E	202	1/1	0.90	0.04	30,30,30,30	0
4	CIT	A	203	13/13	0.95	0.12	19,28,30,32	0
2	GNP	E	201	32/32	0.96	0.10	23,26,32,36	0
3	MG	D	202	1/1	0.96	0.14	36,36,36,36	0
2	GNP	D	201	32/32	0.97	0.10	23,27,32,32	0
2	GNP	C	201	32/32	0.97	0.10	21,25,30,31	0
3	MG	F	202	1/1	0.97	0.07	26,26,26,26	0
2	GNP	B	201	32/32	0.98	0.10	12,15,17,17	0
2	GNP	A	201	32/32	0.98	0.10	12,14,16,16	0
2	GNP	F	201	32/32	0.98	0.08	16,20,25,26	0
3	MG	A	202	1/1	0.99	0.09	15,15,15,15	0
3	MG	B	202	1/1	0.99	0.06	17,17,17,17	0
3	MG	C	202	1/1	0.99	0.04	28,28,28,28	0

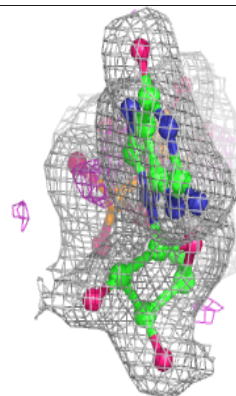
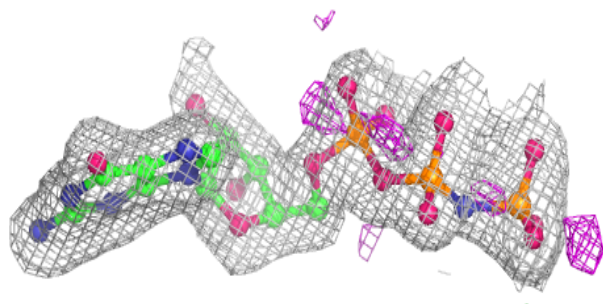
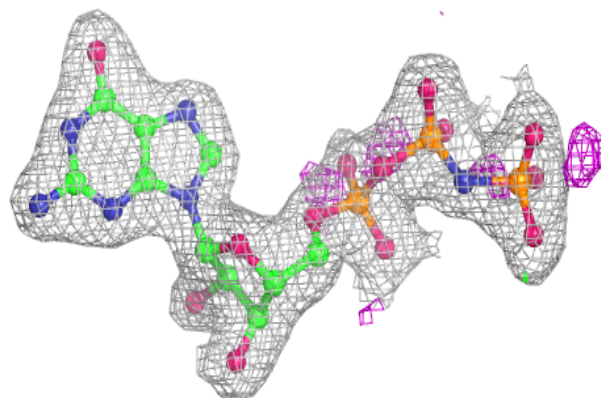
The following is a graphical depiction of the model fit to experimental electron density of all instances of the Ligand of Interest. In addition, ligands with molecular weight > 250 and outliers as shown on the geometry validation Tables will also be included. Each fit is shown from different orientation to approximate a three-dimensional view.

Electron density around GNP E 201:

$2mF_o-DF_c$ (at 0.7 rmsd) in gray
 mF_o-DF_c (at 3 rmsd) in purple (negative)
and green (positive)

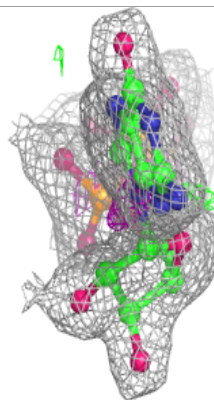
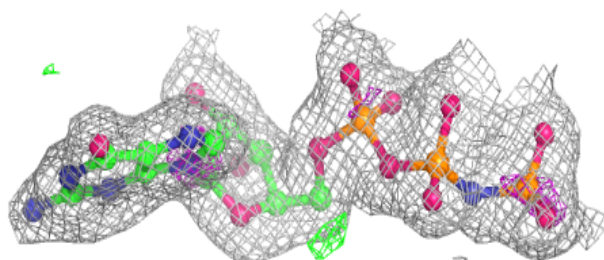
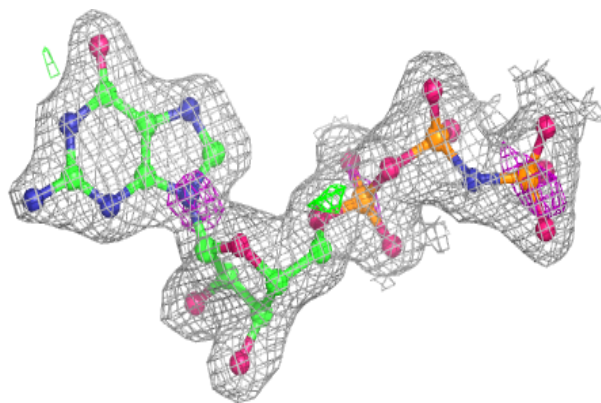
**Electron density around GNP D 201:**

$2mF_o-DF_c$ (at 0.7 rmsd) in gray
 mF_o-DF_c (at 3 rmsd) in purple (negative)
and green (positive)

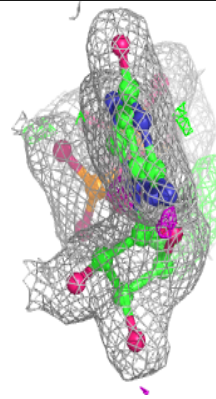
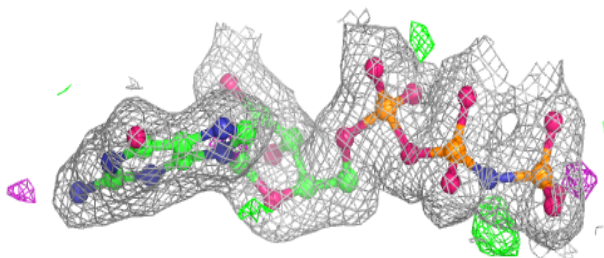
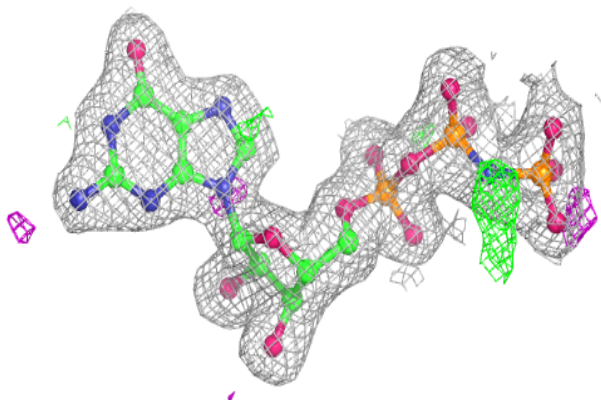


Electron density around GNP C 201:

$2mF_o-DF_c$ (at 0.7 rmsd) in gray
 mF_o-DF_c (at 3 rmsd) in purple (negative)
and green (positive)

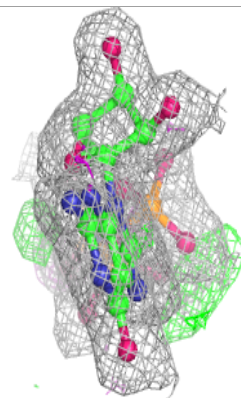
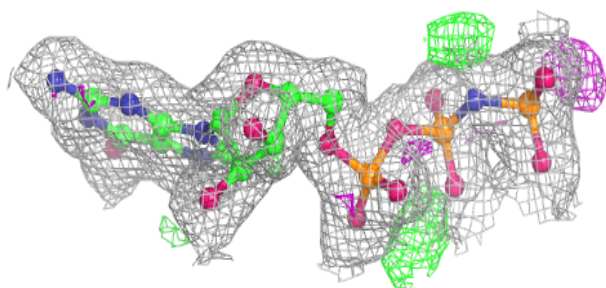
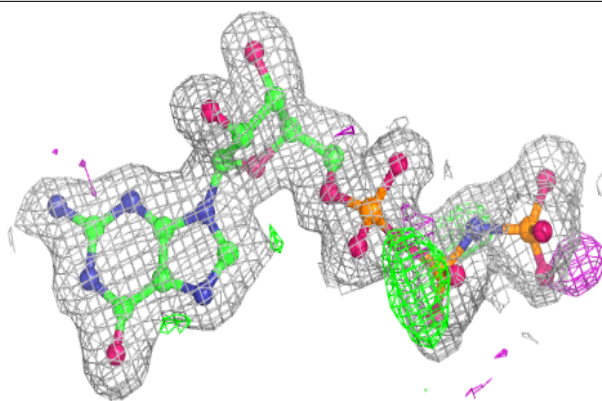
**Electron density around GNP B 201:**

$2mF_o-DF_c$ (at 0.7 rmsd) in gray
 mF_o-DF_c (at 3 rmsd) in purple (negative)
and green (positive)

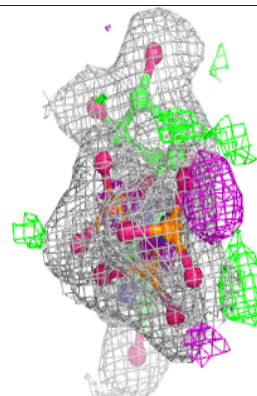
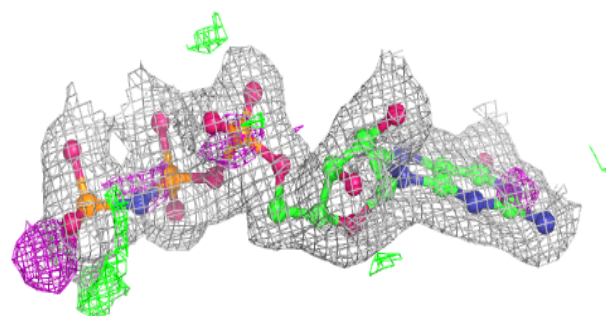
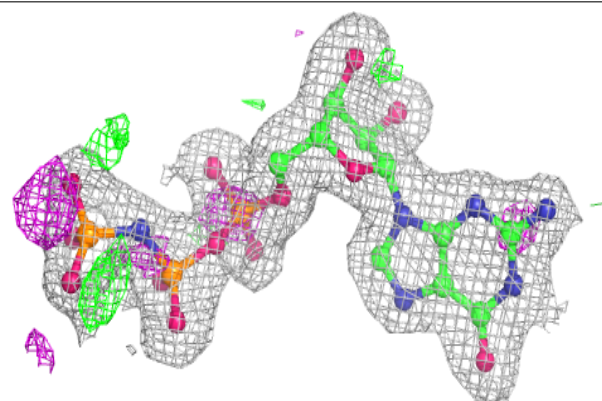


Electron density around GNP A 201:

$2mF_o-DF_c$ (at 0.7 rmsd) in gray
 mF_o-DF_c (at 3 rmsd) in purple (negative)
and green (positive)

**Electron density around GNP F 201:**

$2mF_o-DF_c$ (at 0.7 rmsd) in gray
 mF_o-DF_c (at 3 rmsd) in purple (negative)
and green (positive)



6.5 Other polymers [i](#)

There are no such residues in this entry.