



# Full wwPDB X-ray Structure Validation Report ⓘ

Jan 8, 2024 – 01:32 am GMT

PDB ID : 6GRF  
Title : Crystal structure of the tandem DUF26 ectodomain from the Arabidopsis thaliana cysteine-rich receptor-like protein PDLP8.  
Authors : Brandt, B.; Hothorn, M.  
Deposited on : 2018-06-11  
Resolution : 1.95 Å(reported)

This is a Full wwPDB X-ray Structure Validation Report for a publicly released PDB entry.

We welcome your comments at [validation@mail.wwpdb.org](mailto:validation@mail.wwpdb.org)

A user guide is available at

<https://www.wwpdb.org/validation/2017/XrayValidationReportHelp>

with specific help available everywhere you see the ⓘ symbol.

The types of validation reports are described at

<http://www.wwpdb.org/validation/2017/FAQs#types>.

---

The following versions of software and data (see [references ⓘ](#)) were used in the production of this report:

MolProbity : 4.02b-467  
Mogul : 1.8.4, CSD as541be (2020)  
Xtriage (Phenix) : 1.13  
EDS : 2.36  
Percentile statistics : 20191225.v01 (using entries in the PDB archive December 25th 2019)  
Refmac : 5.8.0158  
CCP4 : 7.0.044 (Gargrove)  
Ideal geometry (proteins) : Engh & Huber (2001)  
Ideal geometry (DNA, RNA) : Parkinson et al. (1996)  
Validation Pipeline (wwPDB-VP) : 2.36

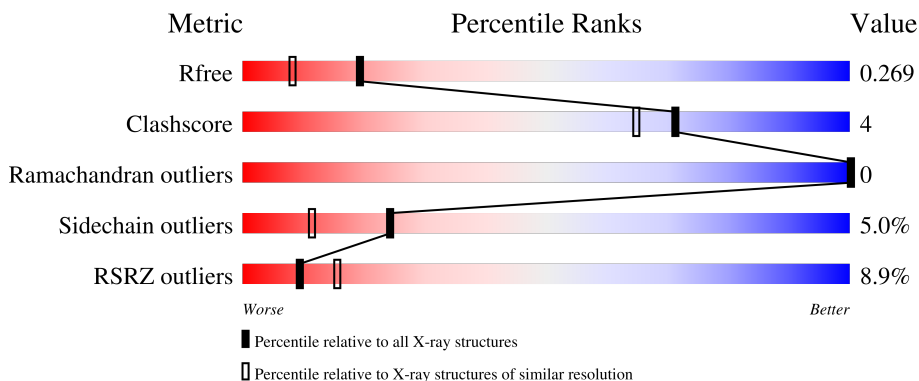
# 1 Overall quality at a glance

The following experimental techniques were used to determine the structure:

*X-RAY DIFFRACTION*

The reported resolution of this entry is 1.95 Å.

Percentile scores (ranging between 0-100) for global validation metrics of the entry are shown in the following graphic. The table shows the number of entries on which the scores are based.



Metric	Whole archive (#Entries)	Similar resolution (#Entries, resolution range(Å))
$R_{free}$	130704	2580 (1.96-1.96)
Clashscore	141614	2705 (1.96-1.96)
Ramachandran outliers	138981	2678 (1.96-1.96)
Sidechain outliers	138945	2678 (1.96-1.96)
RSRZ outliers	127900	2539 (1.96-1.96)

The table below summarises the geometric issues observed across the polymeric chains and their fit to the electron density. The red, orange, yellow and green segments of the lower bar indicate the fraction of residues that contain outliers for  $\geq 3$ , 2, 1 and 0 types of geometric quality criteria respectively. A grey segment represents the fraction of residues that are not modelled. The numeric value for each fraction is indicated below the corresponding segment, with a dot representing fractions  $\leq 5\%$ . The upper red bar (where present) indicates the fraction of residues that have poor fit to the electron density. The numeric value is given above the bar.

Mol	Chain	Length	Quality of chain
1	A	242	
1	B	242	
1	C	242	

## 2 Entry composition i

There are 3 unique types of molecules in this entry. The entry contains 5042 atoms, of which 0 are hydrogens and 0 are deuteriums.

In the tables below, the ZeroOcc column contains the number of atoms modelled with zero occupancy, the AltConf column contains the number of residues with at least one atom in alternate conformation and the Trace column contains the number of residues modelled with at most 2 atoms.

- Molecule 1 is a protein called Cysteine-rich repeat secretory protein 15.

Mol	Chain	Residues	Atoms					ZeroOcc	AltConf	Trace
			Total	C	N	O	S			
1	A	210	1624	1012	265	335	12	0	4	0
1	B	211	1611	998	265	336	12	0	1	0
1	C	206	1586	986	263	325	12	0	1	0

There are 30 discrepancies between the modelled and reference sequences:

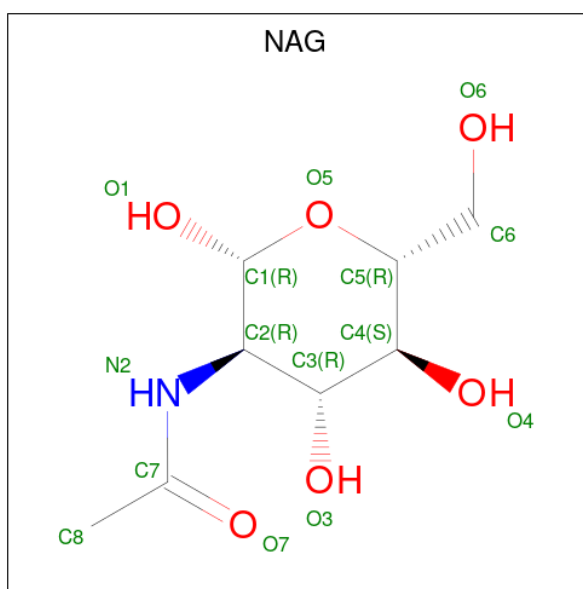
Chain	Residue	Modelled	Actual	Comment	Reference
A	254	LEU	-	expression tag	UNP Q6NKQ9
A	255	GLU	-	expression tag	UNP Q6NKQ9
A	256	GLY	-	expression tag	UNP Q6NKQ9
A	257	SER	-	expression tag	UNP Q6NKQ9
A	258	GLU	-	expression tag	UNP Q6NKQ9
A	259	ASN	-	expression tag	UNP Q6NKQ9
A	260	LEU	-	expression tag	UNP Q6NKQ9
A	261	TYR	-	expression tag	UNP Q6NKQ9
A	262	PHE	-	expression tag	UNP Q6NKQ9
A	263	GLN	-	expression tag	UNP Q6NKQ9
B	254	LEU	-	expression tag	UNP Q6NKQ9
B	255	GLU	-	expression tag	UNP Q6NKQ9
B	256	GLY	-	expression tag	UNP Q6NKQ9
B	257	SER	-	expression tag	UNP Q6NKQ9
B	258	GLU	-	expression tag	UNP Q6NKQ9
B	259	ASN	-	expression tag	UNP Q6NKQ9
B	260	LEU	-	expression tag	UNP Q6NKQ9
B	261	TYR	-	expression tag	UNP Q6NKQ9
B	262	PHE	-	expression tag	UNP Q6NKQ9
B	263	GLN	-	expression tag	UNP Q6NKQ9
C	254	LEU	-	expression tag	UNP Q6NKQ9
C	255	GLU	-	expression tag	UNP Q6NKQ9
C	256	GLY	-	expression tag	UNP Q6NKQ9

*Continued on next page...*

Continued from previous page...

Chain	Residue	Modelled	Actual	Comment	Reference
C	257	SER	-	expression tag	UNP Q6NKQ9
C	258	GLU	-	expression tag	UNP Q6NKQ9
C	259	ASN	-	expression tag	UNP Q6NKQ9
C	260	LEU	-	expression tag	UNP Q6NKQ9
C	261	TYR	-	expression tag	UNP Q6NKQ9
C	262	PHE	-	expression tag	UNP Q6NKQ9
C	263	GLN	-	expression tag	UNP Q6NKQ9

- Molecule 2 is 2-acetamido-2-deoxy-beta-D-glucopyranose (three-letter code: NAG) (formula:  $C_8H_{15}NO_6$ ).



Mol	Chain	Residues	Atoms				ZeroOcc	AltConf
			Total	C	N	O		
2	A	1	Total	C	N	O	0	0
			14	8	1	5		
2	B	1	Total	C	N	O	0	0
			14	8	1	5		

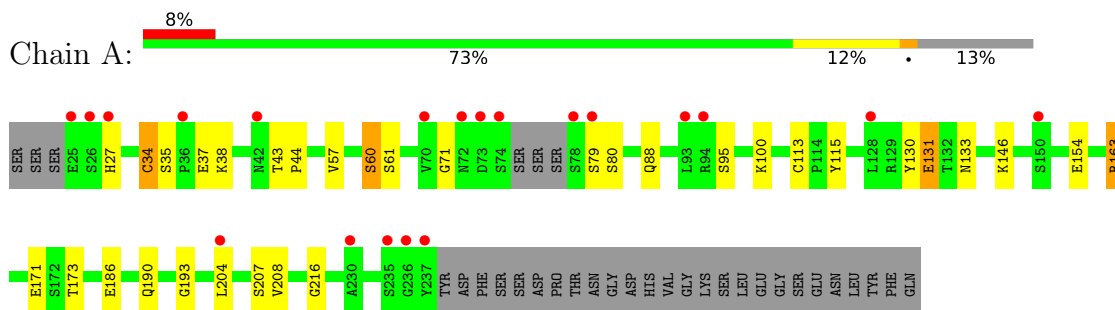
- Molecule 3 is water.

Mol	Chain	Residues	Atoms		ZeroOcc	AltConf
			Total	O		
3	A	74	Total	O	0	0
			74	74		
3	B	64	Total	O	0	0
			64	64		
3	C	55	Total	O	0	0
			55	55		

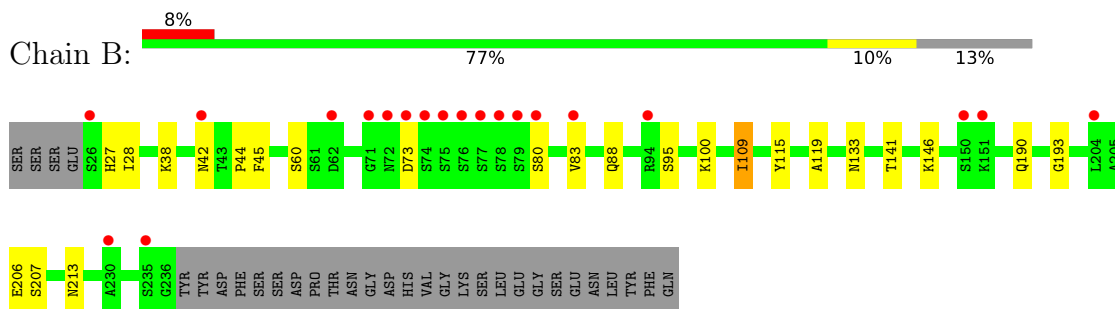
### 3 Residue-property plots [i](#)

These plots are drawn for all protein, RNA, DNA and oligosaccharide chains in the entry. The first graphic for a chain summarises the proportions of the various outlier classes displayed in the second graphic. The second graphic shows the sequence view annotated by issues in geometry and electron density. Residues are color-coded according to the number of geometric quality criteria for which they contain at least one outlier: green = 0, yellow = 1, orange = 2 and red = 3 or more. A red dot above a residue indicates a poor fit to the electron density ( $RSRZ > 2$ ). Stretches of 2 or more consecutive residues without any outlier are shown as a green connector. Residues present in the sample, but not in the model, are shown in grey.

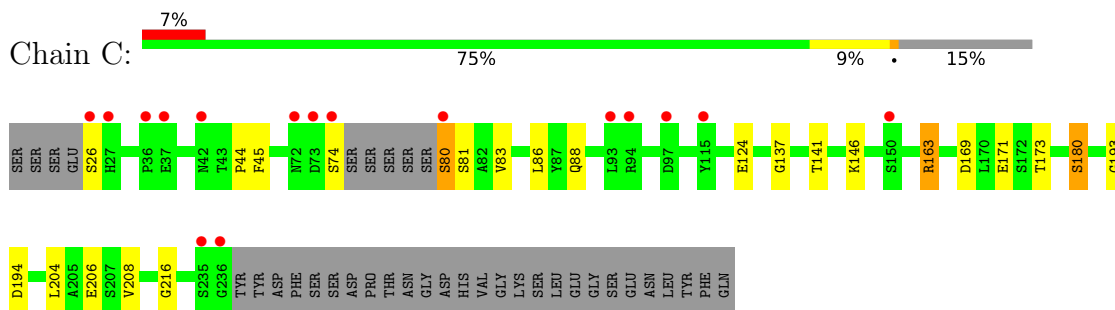
- Molecule 1: Cysteine-rich repeat secretory protein 15



- Molecule 1: Cysteine-rich repeat secretory protein 15



- Molecule 1: Cysteine-rich repeat secretory protein 15



## 4 Data and refinement statistics i

Property	Value	Source
Space group	P 32 2 1	Depositor
Cell constants a, b, c, $\alpha$ , $\beta$ , $\gamma$	143.86Å 143.86Å 59.72Å 90.00° 90.00° 120.00°	Depositor
Resolution (Å)	20.10 – 1.95 20.10 – 1.95	Depositor EDS
% Data completeness (in resolution range)	99.8 (20.10-1.95) 99.9 (20.10-1.95)	Depositor EDS
$R_{merge}$	(Not available)	Depositor
$R_{sym}$	0.31	Depositor
$\langle I/\sigma(I) \rangle$ <sup>1</sup>	1.02 (at 1.94Å)	Xtrriage
Refinement program	REFMAC 5.8.0222	Depositor
R, $R_{free}$	0.229 , 0.262 0.235 , 0.269	Depositor DCC
$R_{free}$ test set	2591 reflections (5.00%)	wwPDB-VP
Wilson B-factor (Å <sup>2</sup> )	30.8	Xtrriage
Anisotropy	0.488	Xtrriage
Bulk solvent $k_{sol}$ (e/Å <sup>3</sup> ), $B_{sol}$ (Å <sup>2</sup> )	0.35 , 31.7	EDS
L-test for twinning <sup>2</sup>	$\langle  L  \rangle = 0.50$ , $\langle L^2 \rangle = 0.34$	Xtrriage
Estimated twinning fraction	0.000 for -h,-k,l	Xtrriage
$F_o, F_c$ correlation	0.96	EDS
Total number of atoms	5042	wwPDB-VP
Average B, all atoms (Å <sup>2</sup> )	43.0	wwPDB-VP

Xtrriage's analysis on translational NCS is as follows: *The analyses of the Patterson function reveals a significant off-origin peak that is 55.73 % of the origin peak, indicating pseudo-translational symmetry. The chance of finding a peak of this or larger height randomly in a structure without pseudo-translational symmetry is equal to 3.0343e-05. The detected translational NCS is most likely also responsible for the elevated intensity ratio.*

<sup>1</sup>Intensities estimated from amplitudes.

<sup>2</sup>Theoretical values of  $\langle |L| \rangle$ ,  $\langle L^2 \rangle$  for acentric reflections are 0.5, 0.333 respectively for untwinned datasets, and 0.375, 0.2 for perfectly twinned datasets.

## 5 Model quality [i](#)

### 5.1 Standard geometry [i](#)

Bond lengths and bond angles in the following residue types are not validated in this section: NAG

The Z score for a bond length (or angle) is the number of standard deviations the observed value is removed from the expected value. A bond length (or angle) with  $|Z| > 5$  is considered an outlier worth inspection. RMSZ is the root-mean-square of all Z scores of the bond lengths (or angles).

Mol	Chain	Bond lengths		Bond angles	
		RMSZ	# Z  >5	RMSZ	# Z  >5
1	A	0.47	0/1667	0.63	0/2252
1	B	0.41	0/1645	0.61	0/2224
1	C	0.43	0/1619	0.60	0/2187
All	All	0.44	0/4931	0.62	0/6663

Chiral center outliers are detected by calculating the chiral volume of a chiral center and verifying if the center is modelled as a planar moiety or with the opposite hand. A planarity outlier is detected by checking planarity of atoms in a peptide group, atoms in a mainchain group or atoms of a sidechain that are expected to be planar.

Mol	Chain	#Chirality outliers	#Planarity outliers
1	A	0	2
1	C	0	1
All	All	0	3

There are no bond length outliers.

There are no bond angle outliers.

There are no chirality outliers.

All (3) planarity outliers are listed below:

Mol	Chain	Res	Type	Group
1	A	163	ARG	Sidechain
1	A	71	GLY	Peptide
1	C	163	ARG	Sidechain

## 5.2 Too-close contacts [i](#)

In the following table, the Non-H and H(model) columns list the number of non-hydrogen atoms and hydrogen atoms in the chain respectively. The H(added) column lists the number of hydrogen atoms added and optimized by MolProbity. The Clashes column lists the number of clashes within the asymmetric unit, whereas Symm-Clashes lists symmetry-related clashes.

Mol	Chain	Non-H	H(model)	H(added)	Clashes	Symm-Clashes
1	A	1624	0	1529	14	1
1	B	1611	0	1510	6	0
1	C	1586	0	1493	12	0
2	A	14	0	13	0	0
2	B	14	0	13	0	0
3	A	74	0	0	0	0
3	B	64	0	0	0	0
3	C	55	0	0	1	0
All	All	5042	0	4558	32	1

The all-atom clashscore is defined as the number of clashes found per 1000 atoms (including hydrogen atoms). The all-atom clashscore for this structure is 4.

All (32) close contacts within the same asymmetric unit are listed below, sorted by their clash magnitude.

Atom-1	Atom-2	Interatomic distance (Å)	Clash overlap (Å)
1:A:34:CYS:HG	1:A:113:CYS:HG	1.09	0.92
1:A:34:CYS:CB	1:A:113:CYS:HG	2.08	0.67
1:A:27:HIS:HE2	1:A:100[B]:LYS:HG3	1.63	0.63
1:A:88:GLN:HE21	1:A:193:GLY:H	1.49	0.60
1:B:109:ILE:HD11	1:B:119:ALA:HB1	1.88	0.54
1:C:88:GLN:HE21	1:C:193:GLY:H	1.56	0.54
1:A:44:PRO:HB2	1:A:80:SER:HA	1.91	0.53
1:C:171:GLU:HG3	1:C:208:VAL:HG21	1.92	0.50
1:C:86:LEU:C	1:C:86:LEU:HD12	2.32	0.50
1:A:130:TYR:C	1:A:131:GLU:HG2	2.31	0.49
1:C:44:PRO:HB2	1:C:80:SER:HA	1.93	0.49
1:C:26:SER:HA	3:C:349:HOH:O	2.12	0.49
1:B:44:PRO:HB2	1:B:80:SER:HA	1.96	0.48
1:C:137:GLY:HA2	1:C:194:ASP:O	2.16	0.46
1:B:45:PHE:CE2	1:B:83:VAL:HG22	2.51	0.46
1:A:88:GLN:NE2	1:A:193:GLY:H	2.13	0.45
1:A:173:THR:HB	1:A:204:LEU:CD1	2.47	0.45
1:B:141:THR:HB	1:B:206:GLU:HG2	2.00	0.44
1:B:38:LYS:HA	1:B:115:TYR:O	2.18	0.42

*Continued on next page...*



Continued from previous page...

Atom-1	Atom-2	Interatomic distance (Å)	Clash overlap (Å)
1:A:171:GLU:HG3	1:A:208:VAL:HG21	2.01	0.42
1:B:88:GLN:HE21	1:B:193:GLY:H	1.67	0.42
1:A:57:VAL:O	1:A:60:SER:HB2	2.20	0.41
1:A:163:ARG:NH2	1:A:216:GLY:O	2.53	0.41
1:C:173:THR:HB	1:C:204:LEU:CD1	2.51	0.41
1:A:43:THR:CG2	1:A:79:SER:HB2	2.51	0.41
1:A:35:SER:HB2	1:A:37:GLU:OE1	2.20	0.41
1:A:38:LYS:HA	1:A:115:TYR:O	2.21	0.41
1:C:163:ARG:NH2	1:C:216:GLY:O	2.54	0.40
1:C:141:THR:HB	1:C:206:GLU:HG2	2.03	0.40
1:C:169:ASP:OD2	1:C:180:SER:OG	2.37	0.40
1:C:74:SER:C	1:C:81:SER:OG	2.59	0.40
1:C:45:PHE:CE2	1:C:83:VAL:HG22	2.57	0.40

All (1) symmetry-related close contacts are listed below. The label for Atom-2 includes the symmetry operator and encoded unit-cell translations to be applied.

Atom-1	Atom-2	Interatomic distance (Å)	Clash overlap (Å)
1:A:154:GLU:OE2	1:A:154:GLU:OE2[4_554]	2.10	0.10

## 5.3 Torsion angles [i](#)

### 5.3.1 Protein backbone [i](#)

In the following table, the Percentiles column shows the percent Ramachandran outliers of the chain as a percentile score with respect to all X-ray entries followed by that with respect to entries of similar resolution.

The Analysed column shows the number of residues for which the backbone conformation was analysed, and the total number of residues.

Mol	Chain	Analysed	Favoured	Allowed	Outliers	Percentiles	
1	A	210/242 (87%)	205 (98%)	5 (2%)	0	100	100
1	B	210/242 (87%)	205 (98%)	5 (2%)	0	100	100
1	C	203/242 (84%)	199 (98%)	4 (2%)	0	100	100
All	All	623/726 (86%)	609 (98%)	14 (2%)	0	100	100

There are no Ramachandran outliers to report.

### 5.3.2 Protein sidechains [i](#)

In the following table, the Percentiles column shows the percent sidechain outliers of the chain as a percentile score with respect to all X-ray entries followed by that with respect to entries of similar resolution.

The Analysed column shows the number of residues for which the sidechain conformation was analysed, and the total number of residues.

Mol	Chain	Analysed	Rotameric	Outliers	Percentiles	
1	A	185/212 (87%)	174 (94%)	11 (6%)	19	8
1	B	185/212 (87%)	172 (93%)	13 (7%)	15	5
1	C	180/212 (85%)	176 (98%)	4 (2%)	52	44
All	All	550/636 (86%)	522 (95%)	28 (5%)	24	11

All (28) residues with a non-rotameric sidechain are listed below:

Mol	Chain	Res	Type
1	A	34	CYS
1	A	60	SER
1	A	61	SER
1	A	95	SER
1	A	131	GLU
1	A	133	ASN
1	A	146	LYS
1	A	186[A]	GLU
1	A	186[B]	GLU
1	A	190	GLN
1	A	207	SER
1	B	27	HIS
1	B	28	ILE
1	B	42	ASN
1	B	60	SER
1	B	73	ASP
1	B	95	SER
1	B	100	LYS
1	B	109	ILE
1	B	133	ASN
1	B	146	LYS
1	B	190	GLN
1	B	207	SER
1	B	213	ASN
1	C	80	SER
1	C	124	GLU

*Continued on next page...*

*Continued from previous page...*

Mol	Chain	Res	Type
1	C	146	LYS
1	C	180	SER

Sometimes sidechains can be flipped to improve hydrogen bonding and reduce clashes. All (10) such sidechains are listed below:

Mol	Chain	Res	Type
1	A	88	GLN
1	A	108	GLN
1	A	190	GLN
1	B	42	ASN
1	B	88	GLN
1	B	108	GLN
1	B	122	GLN
1	B	190	GLN
1	C	88	GLN
1	C	108	GLN

### 5.3.3 RNA [i](#)

There are no RNA molecules in this entry.

## 5.4 Non-standard residues in protein, DNA, RNA chains [i](#)

There are no non-standard protein/DNA/RNA residues in this entry.

## 5.5 Carbohydrates [i](#)

There are no monosaccharides in this entry.

## 5.6 Ligand geometry [i](#)

2 ligands are modelled in this entry.

In the following table, the Counts columns list the number of bonds (or angles) for which Mogul statistics could be retrieved, the number of bonds (or angles) that are observed in the model and the number of bonds (or angles) that are defined in the Chemical Component Dictionary. The Link column lists molecule types, if any, to which the group is linked. The Z score for a bond length (or angle) is the number of standard deviations the observed value is removed from the expected value. A bond length (or angle) with  $|Z| > 2$  is considered an outlier worth inspection. RMSZ is the root-mean-square of all Z scores of the bond lengths (or angles).

Mol	Type	Chain	Res	Link	Bond lengths			Bond angles		
					Counts	RMSZ	# Z  > 2	Counts	RMSZ	# Z  > 2
2	NAG	B	301	1	14,14,15	0.46	0	17,19,21	0.84	0
2	NAG	A	301	1	14,14,15	0.39	0	17,19,21	0.95	1 (5%)

In the following table, the Chirals column lists the number of chiral outliers, the number of chiral centers analysed, the number of these observed in the model and the number defined in the Chemical Component Dictionary. Similar counts are reported in the Torsion and Rings columns. '-' means no outliers of that kind were identified.

Mol	Type	Chain	Res	Link	Chirals	Torsions	Rings
2	NAG	B	301	1	-	0/6/23/26	0/1/1/1
2	NAG	A	301	1	-	0/6/23/26	0/1/1/1

There are no bond length outliers.

All (1) bond angle outliers are listed below:

Mol	Chain	Res	Type	Atoms	Z	Observed(°)	Ideal(°)
2	A	301	NAG	C3-C4-C5	2.25	114.25	110.24

There are no chirality outliers.

There are no torsion outliers.

There are no ring outliers.

No monomer is involved in short contacts.

## 5.7 Other polymers [i](#)

There are no such residues in this entry.

## 5.8 Polymer linkage issues [i](#)

There are no chain breaks in this entry.

## 6 Fit of model and data

### 6.1 Protein, DNA and RNA chains

In the following table, the column labelled ‘#RSRZ > 2’ contains the number (and percentage) of RSRZ outliers, followed by percent RSRZ outliers for the chain as percentile scores relative to all X-ray entries and entries of similar resolution. The OWAB column contains the minimum, median, 95<sup>th</sup> percentile and maximum values of the occupancy-weighted average B-factor per residue. The column labelled ‘Q < 0.9’ lists the number of (and percentage) of residues with an average occupancy less than 0.9.

Mol	Chain	Analysed	<RSRZ>	#RSRZ>2	OWAB(Å <sup>2</sup> )	Q<0.9
1	A	210/242 (86%)	0.43	20 (9%) 8 13	25, 37, 68, 98	0
1	B	211/242 (87%)	0.55	20 (9%) 8 13	29, 41, 69, 96	0
1	C	206/242 (85%)	0.41	16 (7%) 13 20	30, 42, 66, 94	0
All	All	627/726 (86%)	0.46	56 (8%) 9 15	25, 40, 69, 98	0

All (56) RSRZ outliers are listed below:

Mol	Chain	Res	Type	RSRZ
1	C	26	SER	8.2
1	B	76	SER	6.9
1	A	73	ASP	6.8
1	C	73	ASP	6.7
1	B	77	SER	5.7
1	B	42	ASN	4.9
1	B	75	SER	4.8
1	C	74	SER	4.6
1	B	78	SER	4.5
1	C	36	PRO	4.3
1	B	94	ARG	4.0
1	A	235	SER	3.7
1	A	26	SER	3.7
1	B	73	ASP	3.6
1	C	72	ASN	3.3
1	C	97	ASP	3.3
1	B	26	SER	3.2
1	A	42	ASN	3.1
1	C	42	ASN	3.1
1	A	78	SER	3.0
1	A	25	GLU	3.0
1	B	235	SER	3.0
1	C	27	HIS	2.9

*Continued on next page...*

*Continued from previous page...*

Mol	Chain	Res	Type	RSRZ
1	A	79	SER	2.9
1	B	74	SER	2.9
1	C	235	SER	2.8
1	A	237	TYR	2.8
1	A	74	SER	2.8
1	A	94	ARG	2.7
1	A	36	PRO	2.7
1	B	230	ALA	2.7
1	B	150	SER	2.6
1	A	128	LEU	2.6
1	B	83	VAL	2.6
1	C	80	SER	2.6
1	C	93	LEU	2.5
1	C	94	ARG	2.5
1	A	204	LEU	2.5
1	B	204	LEU	2.5
1	B	151	LYS	2.5
1	A	150	SER	2.5
1	C	236	GLY	2.4
1	C	150	SER	2.4
1	C	115	TYR	2.4
1	A	70	VAL	2.4
1	B	80	SER	2.4
1	A	27	HIS	2.3
1	B	72	ASN	2.3
1	A	236	GLY	2.2
1	A	230	ALA	2.2
1	B	71	GLY	2.1
1	A	93	LEU	2.1
1	B	79	SER	2.1
1	B	62	ASP	2.1
1	C	37	GLU	2.0
1	A	72	ASN	2.0

## 6.2 Non-standard residues in protein, DNA, RNA chains [i](#)

There are no non-standard protein/DNA/RNA residues in this entry.

## 6.3 Carbohydrates [i](#)

There are no monosaccharides in this entry.

## 6.4 Ligands [i](#)

In the following table, the Atoms column lists the number of modelled atoms in the group and the number defined in the chemical component dictionary. The B-factors column lists the minimum, median, 95<sup>th</sup> percentile and maximum values of B factors of atoms in the group. The column labelled 'Q< 0.9' lists the number of atoms with occupancy less than 0.9.

Mol	Type	Chain	Res	Atoms	RSCC	RSR	B-factors(Å <sup>2</sup> )	Q<0.9
2	NAG	B	301	14/15	0.52	0.26	67,75,76,79	0
2	NAG	A	301	14/15	0.73	0.22	61,69,77,78	0

## 6.5 Other polymers [i](#)

There are no such residues in this entry.