



# wwPDB X-ray Structure Validation Summary Report ⓘ

Mar 13, 2024 – 05:35 PM JST

PDB ID : 5GSM  
Title : Glycoside hydrolase B with product  
Authors : Watanabe, M.; Kamachi, S.; Mine, S.  
Deposited on : 2016-08-16  
Resolution : 1.27 Å(reported)

This is a wwPDB X-ray Structure Validation Summary Report for a publicly released PDB entry.

We welcome your comments at [validation@mail.wwpdb.org](mailto:validation@mail.wwpdb.org)

A user guide is available at

<https://www.wwpdb.org/validation/2017/XrayValidationReportHelp>

with specific help available everywhere you see the ⓘ symbol.

The types of validation reports are described at

<http://www.wwpdb.org/validation/2017/FAQs#types>.

---

The following versions of software and data (see [references ⓘ](#)) were used in the production of this report:

MolProbity : 4.02b-467  
Mogul : 1.8.5 (274361), CSD as541be (2020)  
Xtriage (Phenix) : 1.13  
EDS : 2.36  
buster-report : 1.1.7 (2018)  
Percentile statistics : 20191225.v01 (using entries in the PDB archive December 25th 2019)  
Refmac : 5.8.0158  
CCP4 : 7.0.044 (Gargrove)  
Ideal geometry (proteins) : Engh & Huber (2001)  
Ideal geometry (DNA, RNA) : Parkinson et al. (1996)  
Validation Pipeline (wwPDB-VP) : 2.36

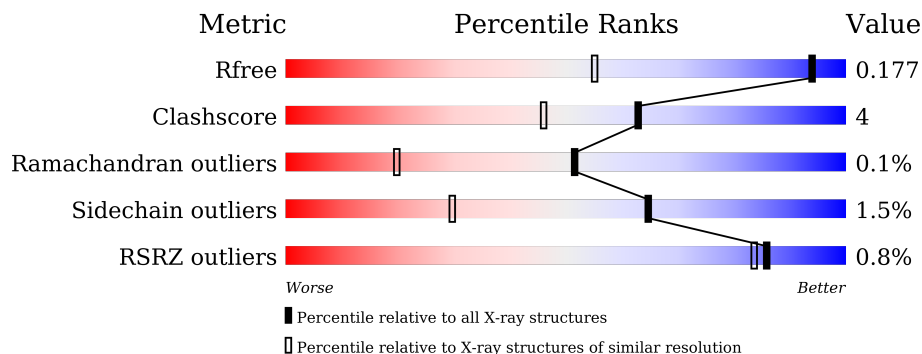
# 1 Overall quality at a glance

The following experimental techniques were used to determine the structure:

*X-RAY DIFFRACTION*

The reported resolution of this entry is 1.27 Å.

Percentile scores (ranging between 0-100) for global validation metrics of the entry are shown in the following graphic. The table shows the number of entries on which the scores are based.



Metric	Whole archive (#Entries)	Similar resolution (#Entries, resolution range(Å))
$R_{free}$	130704	1850 (1.30-1.26)
Clashscore	141614	1926 (1.30-1.26)
Ramachandran outliers	138981	1860 (1.30-1.26)
Sidechain outliers	138945	1859 (1.30-1.26)
RSRZ outliers	127900	1807 (1.30-1.26)

The table below summarises the geometric issues observed across the polymeric chains and their fit to the electron density. The red, orange, yellow and green segments of the lower bar indicate the fraction of residues that contain outliers for  $\geq 3$ , 2, 1 and 0 types of geometric quality criteria respectively. A grey segment represents the fraction of residues that are not modelled. The numeric value for each fraction is indicated below the corresponding segment, with a dot representing fractions  $\leq 5\%$ . The upper red bar (where present) indicates the fraction of residues that have poor fit to the electron density. The numeric value is given above the bar.

Mol	Chain	Length	Quality of chain
1	A	786	
1	B	786	

The following table lists non-polymeric compounds, carbohydrate monomers and non-standard residues in protein, DNA, RNA chains that are outliers for geometric or electron-density-fit criteria:

Mol	Type	Chain	Res	Chirality	Geometry	Clashes	Electron density
4	PPI	A	808	-	X	-	-
4	PPI	A	810	-	X	X	-
4	PPI	B	810	-	X	X	-
4	PPI	B	811	-	-	X	-
4	PPI	B	812	-	-	X	-
4	PPI	B	813	-	-	X	-
5	B3P	A	811	-	X	-	-

## 2 Entry composition i

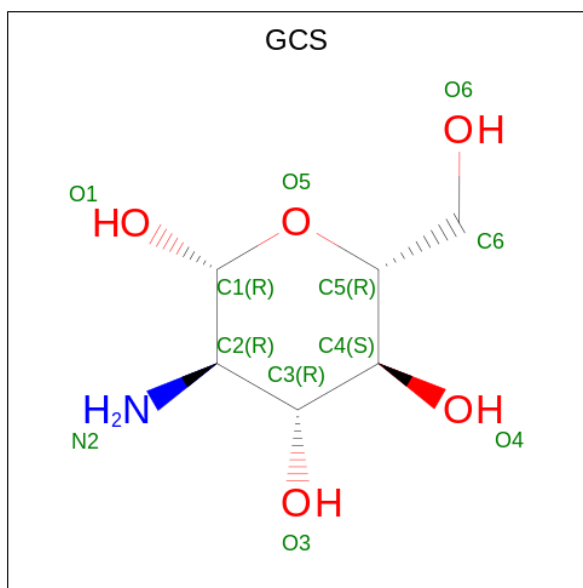
There are 6 unique types of molecules in this entry. The entry contains 14357 atoms, of which 0 are hydrogens and 0 are deuteriums.

In the tables below, the ZeroOcc column contains the number of atoms modelled with zero occupancy, the AltConf column contains the number of residues with at least one atom in alternate conformation and the Trace column contains the number of residues modelled with at most 2 atoms.

- Molecule 1 is a protein called Exo-beta-D-glucosaminidase.

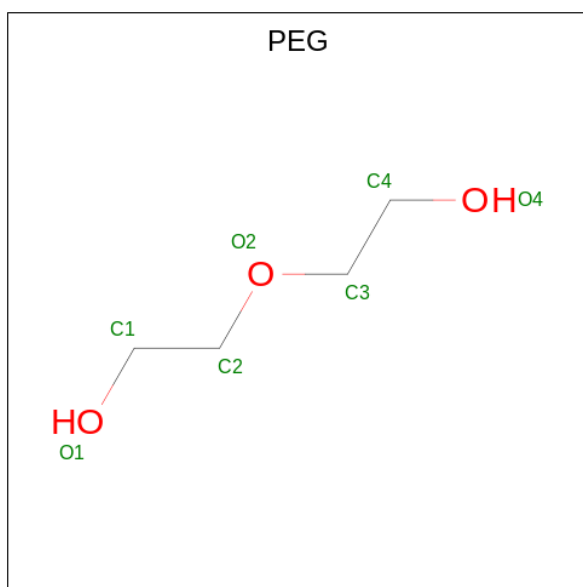
Mol	Chain	Residues	Atoms					ZeroOcc	AltConf	Trace
			Total	C	N	O	S			
1	A	786	Total 6446	C 4191	N 1064	O 1176	S 15	0	7	0
1	B	786	Total 6457	C 4197	N 1070	O 1174	S 16	0	8	0

- Molecule 2 is 2-amino-2-deoxy-beta-D-glucopyranose (three-letter code: GCS) (formula: C<sub>6</sub>H<sub>13</sub>NO<sub>5</sub>).



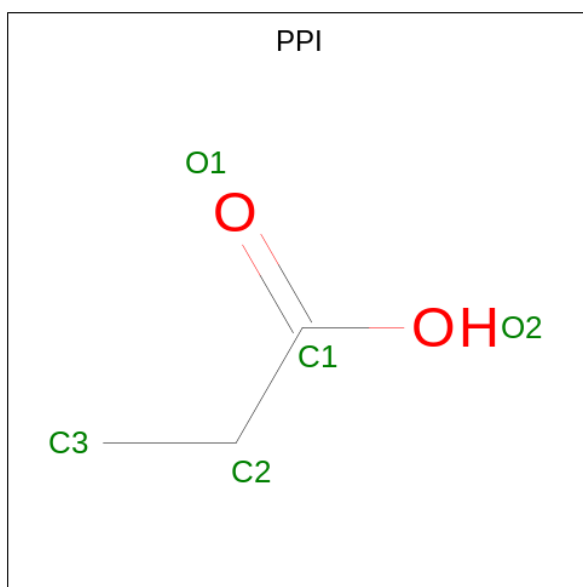
Mol	Chain	Residues	Atoms				ZeroOcc	AltConf
			Total	C	N	O		
2	A	1	Total 12	C 6	N 1	O 5	0	0
2	B	1	Total 12	C 6	N 1	O 5	0	0

- Molecule 3 is DI(HYDROXYETHYL)ETHER (three-letter code: PEG) (formula: C<sub>4</sub>H<sub>10</sub>O<sub>3</sub>).



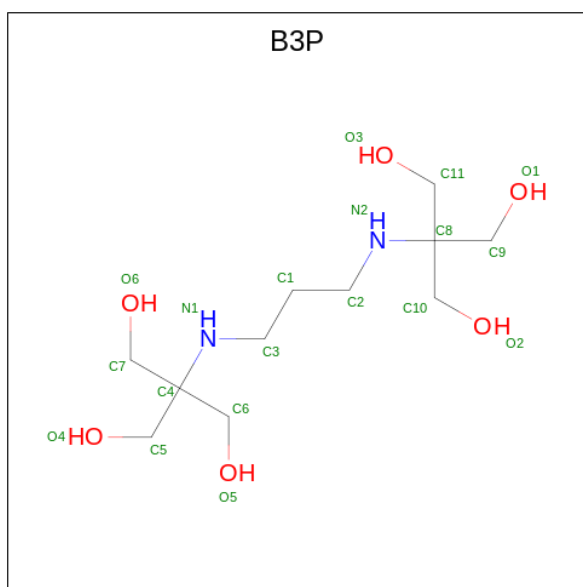
Mol	Chain	Residues	Atoms	ZeroOcc	AltConf
3	A	1	Total C O 7 4 3	0	0
3	A	1	Total C O 7 4 3	0	0
3	A	1	Total C O 7 4 3	0	0
3	A	1	Total C O 7 4 3	0	0
3	A	1	Total C O 7 4 3	0	0
3	A	1	Total C O 7 4 3	0	0
3	B	1	Total C O 7 4 3	0	0
3	B	1	Total C O 7 4 3	0	0
3	B	1	Total C O 7 4 3	0	0
3	B	1	Total C O 7 4 3	0	0
3	B	1	Total C O 7 4 3	0	0
3	B	1	Total C O 7 4 3	0	0

- Molecule 4 is PROPANOIC ACID (three-letter code: PPI) (formula: C<sub>3</sub>H<sub>6</sub>O<sub>2</sub>).



Mol	Chain	Residues	Atoms	ZeroOcc	AltConf
4	A	1	Total C O 5 3 2	0	0
4	A	1	Total C O 5 3 2	0	0
4	A	1	Total C O 5 3 2	0	0
4	B	1	Total C O 5 3 2	0	0
4	B	1	Total C O 5 3 2	0	0
4	B	1	Total C O 5 3 2	0	0
4	B	1	Total C O 5 3 2	0	0
4	B	1	Total C O 5 3 2	0	0
4	B	1	Total C O 5 3 2	0	0

- Molecule 5 is 2-[3-(2-HYDROXY-1,1-DIHYDROXYMETHYL-ETHYLAMINO)-PROPYL AMINO]-2-HYDROXYMETHYL-PROPANE-1,3-DIOL (three-letter code: B3P) (formula: C<sub>11</sub>H<sub>26</sub>N<sub>2</sub>O<sub>6</sub>).



Mol	Chain	Residues	Atoms				ZeroOcc	AltConf
			Total	C	N	O		
5	A	1	19	11	2	6	0	0

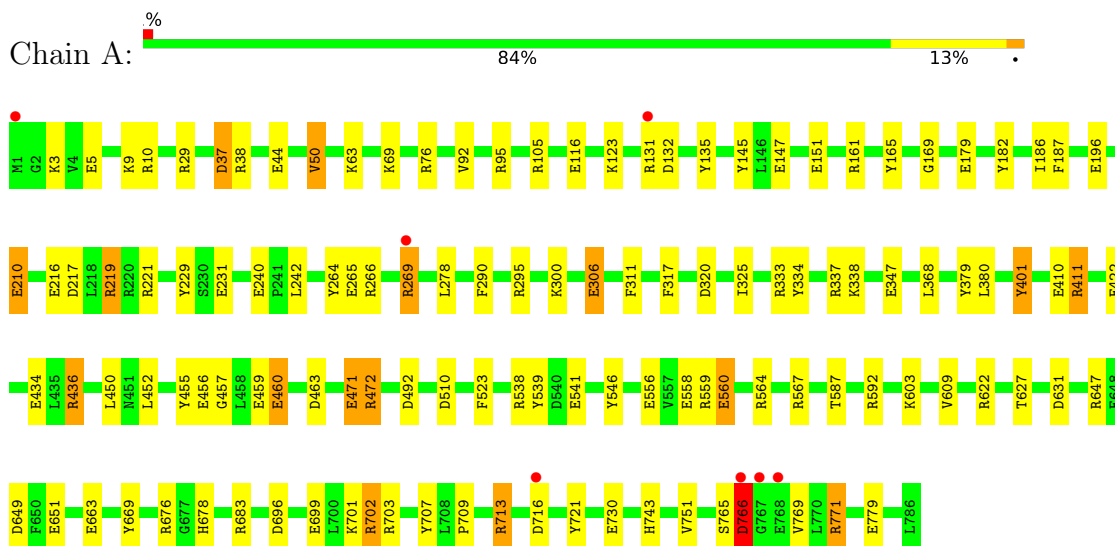
- Molecule 6 is water.

Mol	Chain	Residues	Atoms		ZeroOcc	AltConf
			Total	O		
6	A	608	608	608	0	0
6	B	674	674	674	0	0

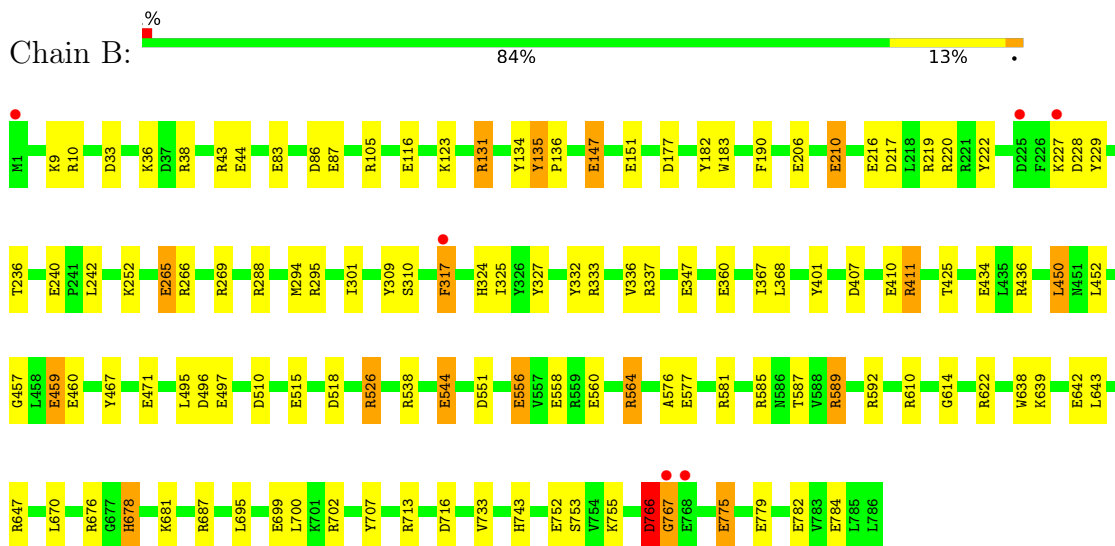
### 3 Residue-property plots [i](#)

These plots are drawn for all protein, RNA, DNA and oligosaccharide chains in the entry. The first graphic for a chain summarises the proportions of the various outlier classes displayed in the second graphic. The second graphic shows the sequence view annotated by issues in geometry and electron density. Residues are color-coded according to the number of geometric quality criteria for which they contain at least one outlier: green = 0, yellow = 1, orange = 2 and red = 3 or more. A red dot above a residue indicates a poor fit to the electron density ( $RSRZ > 2$ ). Stretches of 2 or more consecutive residues without any outlier are shown as a green connector. Residues present in the sample, but not in the model, are shown in grey.

- Molecule 1: Exo-beta-D-glucosaminidase



- Molecule 1: Exo-beta-D-glucosaminidase





## 4 Data and refinement statistics

Property	Value	Source
Space group	P 1 21 1	Depositor
Cell constants a, b, c, $\alpha$ , $\beta$ , $\gamma$	76.58Å 119.99Å 85.90Å 90.00° 98.66° 90.00°	Depositor
Resolution (Å)	20.00 – 1.27 19.98 – 1.27	Depositor EDS
% Data completeness (in resolution range)	92.4 (20.00-1.27) 92.4 (19.98-1.27)	Depositor EDS
$R_{merge}$	(Not available)	Depositor
$R_{sym}$	(Not available)	Depositor
$\langle I/\sigma(I) \rangle$ <sup>1</sup>	1.96 (at 1.27Å)	Xtrriage
Refinement program	REFMAC 5.8.0103	Depositor
R, $R_{free}$	0.130 , 0.175 0.131 , 0.177	Depositor DCC
$R_{free}$ test set	18716 reflections (5.05%)	wwPDB-VP
Wilson B-factor (Å <sup>2</sup> )	7.9	Xtrriage
Anisotropy	0.349	Xtrriage
Bulk solvent $k_{sol}$ (e/Å <sup>3</sup> ), $B_{sol}$ (Å <sup>2</sup> )	0.39 , 46.3	EDS
L-test for twinning <sup>2</sup>	$\langle  L  \rangle = 0.47$ , $\langle L^2 \rangle = 0.30$	Xtrriage
Estimated twinning fraction	No twinning to report.	Xtrriage
$F_o, F_c$ correlation	0.97	EDS
Total number of atoms	14357	wwPDB-VP
Average B, all atoms (Å <sup>2</sup> )	14.0	wwPDB-VP

Xtrriage's analysis on translational NCS is as follows: *The largest off-origin peak in the Patterson function is 3.48% of the height of the origin peak. No significant pseudotranslation is detected.*

<sup>1</sup>Intensities estimated from amplitudes.

<sup>2</sup>Theoretical values of  $\langle |L| \rangle$ ,  $\langle L^2 \rangle$  for acentric reflections are 0.5, 0.333 respectively for untwinned datasets, and 0.375, 0.2 for perfectly twinned datasets.

## 5 Model quality [i](#)

### 5.1 Standard geometry [i](#)

Bond lengths and bond angles in the following residue types are not validated in this section: GCS, B3P, PPI, PEG

The Z score for a bond length (or angle) is the number of standard deviations the observed value is removed from the expected value. A bond length (or angle) with  $|Z| > 5$  is considered an outlier worth inspection. RMSZ is the root-mean-square of all Z scores of the bond lengths (or angles).

Mol	Chain	Bond lengths		Bond angles	
		RMSZ	# Z  >5	RMSZ	# Z  >5
1	A	1.47	61/6654 (0.9%)	1.36	75/9046 (0.8%)
1	B	1.41	53/6665 (0.8%)	1.37	72/9060 (0.8%)
All	All	1.44	114/13319 (0.9%)	1.37	147/18106 (0.8%)

Chiral center outliers are detected by calculating the chiral volume of a chiral center and verifying if the center is modelled as a planar moiety or with the opposite hand. A planarity outlier is detected by checking planarity of atoms in a peptide group, atoms in a mainchain group or atoms of a sidechain that are expected to be planar.

Mol	Chain	#Chirality outliers	#Planarity outliers
1	A	0	2
1	B	0	1
All	All	0	3

The worst 5 of 114 bond length outliers are listed below:

Mol	Chain	Res	Type	Atoms	Z	Observed(Å)	Ideal(Å)
1	A	651	GLU	CD-OE2	-19.47	1.04	1.25
1	B	265	GLU	CD-OE2	12.26	1.39	1.25
1	A	210	GLU	CD-OE2	-11.82	1.12	1.25
1	A	231	GLU	CD-OE1	-11.55	1.12	1.25
1	A	558[A]	GLU	CD-OE1	11.01	1.37	1.25

The worst 5 of 147 bond angle outliers are listed below:

Mol	Chain	Res	Type	Atoms	Z	Observed(°)	Ideal(°)
1	B	564	ARG	NE-CZ-NH1	19.68	130.14	120.30
1	B	687	ARG	NE-CZ-NH2	-17.35	111.62	120.30
1	B	266	ARG	NE-CZ-NH2	14.13	127.37	120.30
1	B	10	ARG	NE-CZ-NH2	-14.08	113.26	120.30

*Continued on next page...*

*Continued from previous page...*

Mol	Chain	Res	Type	Atoms	Z	Observed(°)	Ideal(°)
1	B	564	ARG	NE-CZ-NH2	-12.72	113.94	120.30

There are no chirality outliers.

All (3) planarity outliers are listed below:

Mol	Chain	Res	Type	Group
1	A	306	GLU	Sidechain
1	A	411	ARG	Sidechain
1	B	766	ASP	Peptide

## 5.2 Too-close contacts [i](#)

In the following table, the Non-H and H(model) columns list the number of non-hydrogen atoms and hydrogen atoms in the chain respectively. The H(added) column lists the number of hydrogen atoms added and optimized by MolProbity. The Clashes column lists the number of clashes within the asymmetric unit, whereas Symm-Clashes lists symmetry-related clashes.

Mol	Chain	Non-H	H(model)	H(added)	Clashes	Symm-Clashes
1	A	6446	0	6312	37	1
1	B	6457	0	6331	56	3
2	A	12	0	12	1	0
2	B	12	0	13	1	0
3	A	42	0	60	1	0
3	B	42	0	60	3	0
4	A	15	0	15	9	0
4	B	30	0	30	20	3
5	A	19	0	25	0	0
6	A	608	0	0	17	7
6	B	674	0	0	21	5
All	All	14357	0	12858	112	14

The all-atom clashscore is defined as the number of clashes found per 1000 atoms (including hydrogen atoms). The all-atom clashscore for this structure is 4.

The worst 5 of 112 close contacts within the same asymmetric unit are listed below, sorted by their clash magnitude.

Atom-1	Atom-2	Interatomic distance (Å)	Clash overlap (Å)
1:B:317[B]:PHE:HZ	1:B:325[B]:ILE:CD1	1.20	1.52
1:B:317[B]:PHE:CZ	1:B:325[B]:ILE:HD11	1.42	1.49

*Continued on next page...*

Continued from previous page...

Atom-1	Atom-2	Interatomic distance (Å)	Clash overlap (Å)
1:B:317[B]:PHE:CZ	1:B:325[B]:ILE:CD1	1.99	1.41
1:B:317[B]:PHE:CE1	1:B:325[B]:ILE:HD11	1.57	1.38
1:A:37:ASP:HB2	6:A:1317:HOH:O	1.22	1.35

The worst 5 of 14 symmetry-related close contacts are listed below. The label for Atom-2 includes the symmetry operator and encoded unit-cell translations to be applied.

Atom-1	Atom-2	Interatomic distance (Å)	Clash overlap (Å)
6:A:1398:HOH:O	6:A:1408:HOH:O[1_655]	0.82	1.38
6:B:1007:HOH:O	6:B:1372:HOH:O[2_747]	0.85	1.35
4:B:813:PPI:O2	6:A:1277:HOH:O[2_747]	0.87	1.33
6:B:953:HOH:O	6:B:1199:HOH:O[2_857]	0.98	1.22
6:B:1339:HOH:O	6:B:1412:HOH:O[2_847]	0.98	1.22

## 5.3 Torsion angles [i](#)

### 5.3.1 Protein backbone [i](#)

In the following table, the Percentiles column shows the percent Ramachandran outliers of the chain as a percentile score with respect to all X-ray entries followed by that with respect to entries of similar resolution.

The Analysed column shows the number of residues for which the backbone conformation was analysed, and the total number of residues.

Mol	Chain	Analysed	Favoured	Allowed	Outliers	Percentiles	
1	A	791/786 (101%)	764 (97%)	26 (3%)	1 (0%)	51	20
1	B	792/786 (101%)	766 (97%)	25 (3%)	1 (0%)	51	20
All	All	1583/1572 (101%)	1530 (97%)	51 (3%)	2 (0%)	51	20

All (2) Ramachandran outliers are listed below:

Mol	Chain	Res	Type
1	B	767	GLY
1	A	766	ASP

### 5.3.2 Protein sidechains [i](#)

In the following table, the Percentiles column shows the percent sidechain outliers of the chain as a percentile score with respect to all X-ray entries followed by that with respect to entries of similar resolution.

The Analysed column shows the number of residues for which the sidechain conformation was analysed, and the total number of residues.

Mol	Chain	Analysed	Rotameric	Outliers	Percentiles	
1	A	689/682 (101%)	676 (98%)	13 (2%)	57	19
1	B	690/682 (101%)	682 (99%)	8 (1%)	71	38
All	All	1379/1364 (101%)	1358 (98%)	21 (2%)	65	30

5 of 21 residues with a non-rotameric sidechain are listed below:

Mol	Chain	Res	Type
1	B	227	LYS
1	B	401	TYR
1	B	752	GLU
1	B	510	ASP
1	B	367	ILE

Sometimes sidechains can be flipped to improve hydrogen bonding and reduce clashes. 5 of 6 such sidechains are listed below:

Mol	Chain	Res	Type
1	B	257	ASN
1	B	324	HIS
1	B	678	HIS
1	A	257	ASN
1	A	75	GLN

### 5.3.3 RNA [i](#)

There are no RNA molecules in this entry.

## 5.4 Non-standard residues in protein, DNA, RNA chains [i](#)

There are no non-standard protein/DNA/RNA residues in this entry.

## 5.5 Carbohydrates [i](#)

There are no monosaccharides in this entry.

## 5.6 Ligand geometry [i](#)

24 ligands are modelled in this entry.

In the following table, the Counts columns list the number of bonds (or angles) for which Mogul statistics could be retrieved, the number of bonds (or angles) that are observed in the model and the number of bonds (or angles) that are defined in the Chemical Component Dictionary. The Link column lists molecule types, if any, to which the group is linked. The Z score for a bond length (or angle) is the number of standard deviations the observed value is removed from the expected value. A bond length (or angle) with  $|Z| > 2$  is considered an outlier worth inspection. RMSZ is the root-mean-square of all Z scores of the bond lengths (or angles).

Mol	Type	Chain	Res	Link	Bond lengths			Bond angles		
					Counts	RMSZ	# Z  > 2	Counts	RMSZ	# Z  > 2
3	PEG	A	805	-	6,6,6	0.84	0	5,5,5	1.37	1 (20%)
4	PPI	B	812	-	4,4,4	2.05	1 (25%)	4,4,4	2.84	2 (50%)
4	PPI	A	808	-	4,4,4	2.18	2 (50%)	4,4,4	3.20	2 (50%)
3	PEG	A	803	-	6,6,6	0.84	0	5,5,5	0.78	0
3	PEG	A	802	-	6,6,6	0.80	0	5,5,5	0.82	0
3	PEG	B	805	-	6,6,6	0.62	0	5,5,5	0.65	0
3	PEG	A	806	-	6,6,6	0.72	0	5,5,5	0.95	0
2	GCS	A	801	-	12,12,12	3.57	8 (66%)	16,17,17	2.86	8 (50%)
4	PPI	A	809	-	4,4,4	1.86	1 (25%)	4,4,4	1.51	1 (25%)
3	PEG	B	807	-	6,6,6	0.90	0	5,5,5	1.83	1 (20%)
4	PPI	B	811	-	4,4,4	1.98	2 (50%)	4,4,4	1.74	1 (25%)
3	PEG	B	802	-	6,6,6	0.85	0	5,5,5	1.46	1 (20%)
4	PPI	B	809	-	4,4,4	0.75	0	4,4,4	0.99	0
3	PEG	B	803	-	6,6,6	0.83	0	5,5,5	2.36	2 (40%)
4	PPI	B	810	-	4,4,4	3.64	2 (50%)	4,4,4	1.91	2 (50%)
5	B3P	A	811	-	18,18,18	2.57	6 (33%)	21,23,23	3.84	9 (42%)
4	PPI	A	810	-	4,4,4	2.31	1 (25%)	4,4,4	1.70	1 (25%)
2	GCS	B	801	-	12,12,12	3.04	6 (50%)	16,17,17	2.60	8 (50%)
3	PEG	A	804	-	6,6,6	0.91	0	5,5,5	0.45	0
3	PEG	A	807	-	6,6,6	1.69	1 (16%)	5,5,5	1.26	0
4	PPI	B	808	-	4,4,4	0.77	0	4,4,4	2.84	2 (50%)
3	PEG	B	806	-	6,6,6	0.43	0	5,5,5	1.31	1 (20%)
4	PPI	B	813	-	4,4,4	1.19	0	4,4,4	1.27	1 (25%)

Mol	Type	Chain	Res	Link	Bond lengths			Bond angles		
					Counts	RMSZ	# Z  > 2	Counts	RMSZ	# Z  > 2
3	PEG	B	804	-	6,6,6	1.74	2 (33%)	5,5,5	1.28	0

In the following table, the Chirals column lists the number of chiral outliers, the number of chiral centers analysed, the number of these observed in the model and the number defined in the Chemical Component Dictionary. Similar counts are reported in the Torsion and Rings columns. '-' means no outliers of that kind were identified.

Mol	Type	Chain	Res	Link	Chirals	Torsions	Rings
3	PEG	A	805	-	-	3/4/4/4	-
4	PPI	B	812	-	-	0/2/2/2	-
4	PPI	A	808	-	-	2/2/2/2	-
3	PEG	A	803	-	-	2/4/4/4	-
3	PEG	A	802	-	-	2/4/4/4	-
3	PEG	B	805	-	-	3/4/4/4	-
3	PEG	A	806	-	-	2/4/4/4	-
2	GCS	A	801	-	-	0/2/22/22	0/1/1/1
4	PPI	A	809	-	-	0/2/2/2	-
3	PEG	B	807	-	-	3/4/4/4	-
4	PPI	B	811	-	-	0/2/2/2	-
3	PEG	B	802	-	-	2/4/4/4	-
4	PPI	B	809	-	-	0/2/2/2	-
3	PEG	B	803	-	-	3/4/4/4	-
4	PPI	B	810	-	-	2/2/2/2	-
5	B3P	A	811	-	-	14/28/28/28	-
4	PPI	A	810	-	-	2/2/2/2	-
2	GCS	B	801	-	-	0/2/22/22	0/1/1/1
3	PEG	A	804	-	-	3/4/4/4	-
3	PEG	A	807	-	-	1/4/4/4	-
4	PPI	B	808	-	-	1/2/2/2	-
3	PEG	B	806	-	-	1/4/4/4	-
4	PPI	B	813	-	-	2/2/2/2	-
3	PEG	B	804	-	-	2/4/4/4	-

The worst 5 of 32 bond length outliers are listed below:

Mol	Chain	Res	Type	Atoms	Z	Observed(Å)	Ideal(Å)
5	A	811	B3P	C9-C8	8.44	1.63	1.53
2	A	801	GCS	C1-C2	6.95	1.60	1.52
2	B	801	GCS	O3-C3	6.93	1.59	1.43

*Continued on next page...*

*Continued from previous page...*

Mol	Chain	Res	Type	Atoms	Z	Observed(Å)	Ideal(Å)
4	B	810	PPI	O2-C1	-6.65	1.08	1.30
2	A	801	GCS	C2-N2	5.46	1.55	1.47

The worst 5 of 43 bond angle outliers are listed below:

Mol	Chain	Res	Type	Atoms	Z	Observed(°)	Ideal(°)
5	A	811	B3P	C2-N2-C8	7.25	126.37	116.08
5	A	811	B3P	C3-N1-C4	7.01	126.03	116.08
2	A	801	GCS	C3-C4-C5	-6.84	98.03	110.24
5	A	811	B3P	C11-C8-C10	-6.84	95.58	110.04
5	A	811	B3P	O1-C9-C8	6.80	125.40	111.63

There are no chirality outliers.

5 of 50 torsion outliers are listed below:

Mol	Chain	Res	Type	Atoms
4	B	810	PPI	O2-C1-C2-C3
5	A	811	B3P	C1-C3-N1-C4
5	A	811	B3P	C5-C4-N1-C3
5	A	811	B3P	C6-C4-N1-C3
5	A	811	B3P	C7-C4-N1-C3

There are no ring outliers.

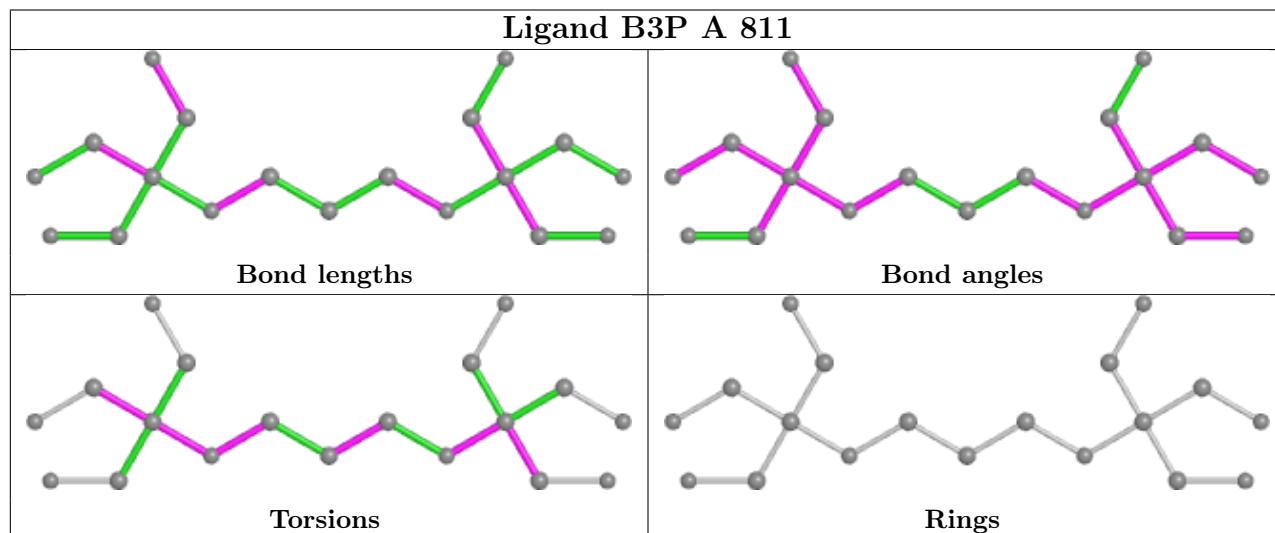
10 monomers are involved in 38 short contacts:

Mol	Chain	Res	Type	Clashes	Symm-Clashes
4	B	812	PPI	5	0
2	A	801	GCS	1	0
3	B	807	PEG	1	0
4	B	811	PPI	5	0
3	B	803	PEG	2	0
4	B	810	PPI	8	0
4	A	810	PPI	9	0
2	B	801	GCS	1	0
3	A	807	PEG	1	0
4	B	813	PPI	2	3

The following is a two-dimensional graphical depiction of Mogul quality analysis of bond lengths, bond angles, torsion angles, and ring geometry for all instances of the Ligand of Interest. In addition, ligands with molecular weight > 250 and outliers as shown on the validation Tables will also be included. For torsion angles, if less than 5% of the Mogul distribution of torsion angles is



within 10 degrees of the torsion angle in question, then that torsion angle is considered an outlier. Any bond that is central to one or more torsion angles identified as an outlier by Mogul will be highlighted in the graph. For rings, the root-mean-square deviation (RMSD) between the ring in question and similar rings identified by Mogul is calculated over all ring torsion angles. If the average RMSD is greater than 60 degrees and the minimal RMSD between the ring in question and any Mogul-identified rings is also greater than 60 degrees, then that ring is considered an outlier. The outliers are highlighted in purple. The color gray indicates Mogul did not find sufficient equivalents in the CSD to analyse the geometry.



## 5.7 Other polymers [i](#)

There are no such residues in this entry.

## 5.8 Polymer linkage issues [i](#)

There are no chain breaks in this entry.

## 6 Fit of model and data [i](#)

### 6.1 Protein, DNA and RNA chains [i](#)

In the following table, the column labelled '#RSRZ > 2' contains the number (and percentage) of RSRZ outliers, followed by percent RSRZ outliers for the chain as percentile scores relative to all X-ray entries and entries of similar resolution. The OWAB column contains the minimum, median, 95<sup>th</sup> percentile and maximum values of the occupancy-weighted average B-factor per residue. The column labelled 'Q < 0.9' lists the number of (and percentage) of residues with an average occupancy less than 0.9.

Mol	Chain	Analysed	<RSRZ>	#RSRZ>2	OWAB(Å <sup>2</sup> )	Q<0.9
1	A	786/786 (100%)	-0.63	7 (0%) 84 82	6, 12, 29, 65	0
1	B	786/786 (100%)	-0.71	6 (0%) 86 83	5, 10, 25, 63	0
All	All	1572/1572 (100%)	-0.67	13 (0%) 86 83	5, 11, 28, 65	0

The worst 5 of 13 RSRZ outliers are listed below:

Mol	Chain	Res	Type	RSRZ
1	A	767	GLY	6.3
1	A	1	MET	4.4
1	A	768	GLU	3.6
1	B	1	MET	3.3
1	B	227	LYS	3.2

### 6.2 Non-standard residues in protein, DNA, RNA chains [i](#)

There are no non-standard protein/DNA/RNA residues in this entry.

### 6.3 Carbohydrates [i](#)

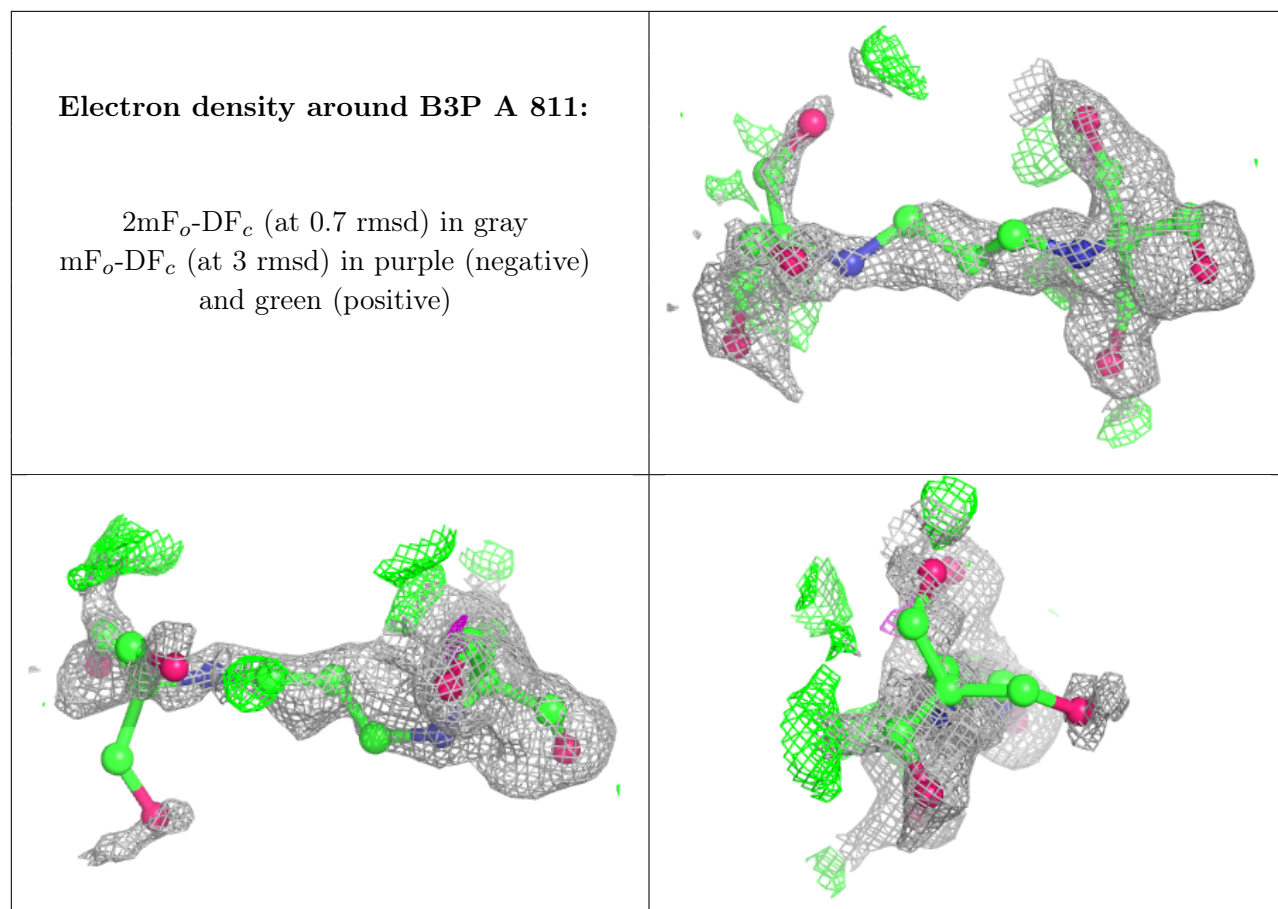
There are no monosaccharides in this entry.

### 6.4 Ligands [i](#)

In the following table, the Atoms column lists the number of modelled atoms in the group and the number defined in the chemical component dictionary. The B-factors column lists the minimum, median, 95<sup>th</sup> percentile and maximum values of B factors of atoms in the group. The column labelled 'Q < 0.9' lists the number of atoms with occupancy less than 0.9.

Mol	Type	Chain	Res	Atoms	RSCC	RSR	B-factors( $\text{\AA}^2$ )	Q<0.9
3	PEG	A	805	7/7	0.60	0.35	34,43,49,52	0
3	PEG	A	803	7/7	0.78	0.19	37,43,45,48	0
3	PEG	A	804	7/7	0.79	0.15	45,46,61,64	0
3	PEG	A	806	7/7	0.79	0.14	31,33,41,41	0
3	PEG	B	806	7/7	0.82	0.30	34,42,45,63	0
5	B3P	A	811	19/19	0.82	0.24	32,48,75,83	0
3	PEG	B	805	7/7	0.83	0.17	49,55,57,61	0
3	PEG	B	807	7/7	0.84	0.24	29,31,49,50	0
4	PPI	B	809	5/5	0.84	0.13	39,43,60,62	0
3	PEG	A	807	7/7	0.84	0.14	23,29,37,40	0
3	PEG	B	804	7/7	0.89	0.17	19,23,29,37	0
3	PEG	B	803	7/7	0.89	0.13	33,36,44,59	0
3	PEG	B	802	7/7	0.90	0.12	30,32,49,50	0
4	PPI	A	808	5/5	0.90	0.13	32,32,38,40	0
4	PPI	B	811	5/5	0.91	0.28	18,26,56,62	0
3	PEG	A	802	7/7	0.92	0.11	27,32,38,56	0
4	PPI	B	808	5/5	0.94	0.08	22,23,32,32	0
4	PPI	B	812	5/5	0.94	0.16	23,27,35,62	0
4	PPI	A	810	5/5	0.94	0.27	20,28,51,65	0
2	GCS	B	801	12/12	0.95	0.13	8,16,23,24	0
2	GCS	A	801	12/12	0.95	0.13	10,17,21,28	0
4	PPI	B	813	5/5	0.97	0.22	14,23,52,113	0
4	PPI	A	809	5/5	0.98	0.11	19,22,24,27	0
4	PPI	B	810	5/5	0.99	0.12	13,16,25,58	0

The following is a graphical depiction of the model fit to experimental electron density of all instances of the Ligand of Interest. In addition, ligands with molecular weight > 250 and outliers as shown on the geometry validation Tables will also be included. Each fit is shown from different orientation to approximate a three-dimensional view.



## 6.5 Other polymers [i](#)

There are no such residues in this entry.