



# Full wwPDB X-ray Structure Validation Report ⓘ

Dec 3, 2023 – 06:24 am GMT

PDB ID : 1GT5  
Title : Complexe of Bovine Odorant Binding Protein with benzophenone  
Authors : Vincent, F.; Ramoni, R.; Spinelli, S.; Grolli, S.; Conti, V.; Cambillau, C.;  
Tegoni, M.  
Deposited on : 2002-01-10  
Resolution : 2.08 Å(reported)

This is a Full wwPDB X-ray Structure Validation Report for a publicly released PDB entry.

We welcome your comments at [validation@mail.wwpdb.org](mailto:validation@mail.wwpdb.org)

A user guide is available at

<https://www.wwpdb.org/validation/2017/XrayValidationReportHelp>

with specific help available everywhere you see the ⓘ symbol.

The types of validation reports are described at

<http://www.wwpdb.org/validation/2017/FAQs#types>.

---

The following versions of software and data (see [references ⓘ](#)) were used in the production of this report:

MolProbity : 4.02b-467  
Mogul : 1.8.4, CSD as541be (2020)  
Xtriage (Phenix) : 1.13  
EDS : 2.36  
Percentile statistics : 20191225.v01 (using entries in the PDB archive December 25th 2019)  
Refmac : 5.8.0158  
CCP4 : 7.0.044 (Gargrove)  
Ideal geometry (proteins) : Engh & Huber (2001)  
Ideal geometry (DNA, RNA) : Parkinson et al. (1996)  
Validation Pipeline (wwPDB-VP) : 2.36

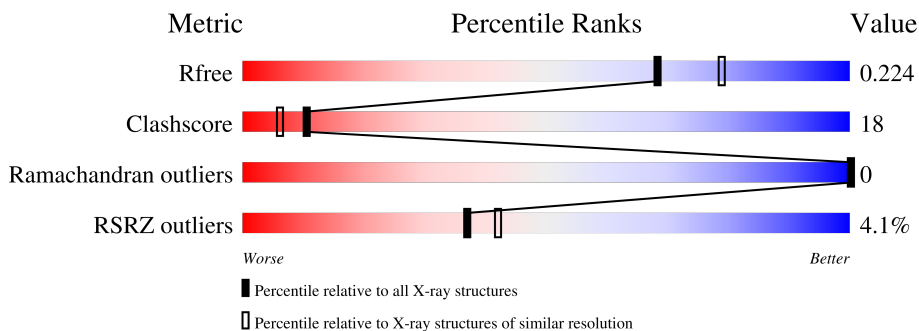
# 1 Overall quality at a glance

The following experimental techniques were used to determine the structure:

*X-RAY DIFFRACTION*

The reported resolution of this entry is 2.08 Å.

Percentile scores (ranging between 0-100) for global validation metrics of the entry are shown in the following graphic. The table shows the number of entries on which the scores are based.



Metric	Whole archive (#Entries)	Similar resolution (#Entries, resolution range(Å))
$R_{free}$	130704	6189 (2.10-2.06)
Clashscore	141614	6738 (2.10-2.06)
Ramachandran outliers	138981	6663 (2.10-2.06)
RSRZ outliers	127900	6057 (2.10-2.06)

The table below summarises the geometric issues observed across the polymeric chains and their fit to the electron density. The red, orange, yellow and green segments of the lower bar indicate the fraction of residues that contain outliers for  $\geq 3$ , 2, 1 and 0 types of geometric quality criteria respectively. A grey segment represents the fraction of residues that are not modelled. The numeric value for each fraction is indicated below the corresponding segment, with a dot representing fractions  $\leq 5\%$ . The upper red bar (where present) indicates the fraction of residues that have poor fit to the electron density. The numeric value is given above the bar.

Mol	Chain	Length	Quality of chain
1	A	159	 5% (Poor fit)   77% (Green)   22% (Yellow)   • (Grey)
1	B	159	 3% (Poor fit)   79% (Green)   18% (Yellow)   •• (Grey)

## 2 Entry composition [i](#)

There are 3 unique types of molecules in this entry. The entry contains 2744 atoms, of which 0 are hydrogens and 0 are deuteriums.

In the tables below, the ZeroOcc column contains the number of atoms modelled with zero occupancy, the AltConf column contains the number of residues with at least one atom in alternate conformation and the Trace column contains the number of residues modelled with at most 2 atoms.

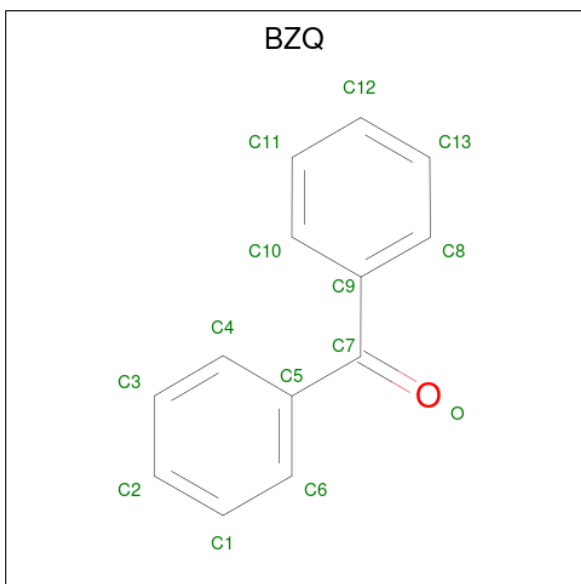
- Molecule 1 is a protein called ODORANT-BINDING PROTEIN.

Mol	Chain	Residues	Atoms			ZeroOcc	AltConf	Trace	
			Total	C	N				O
1	A	159	1326	838	224	264	2	2	0
1	B	156	1294	816	221	257	0	2	1

There are 2 discrepancies between the modelled and reference sequences:

Chain	Residue	Modelled	Actual	Comment	Reference
A	154	ASN	ASP	conflict	UNP P07435
B	154	ASN	ASP	conflict	UNP P07435

- Molecule 2 is DIPHENYLMETHANONE (three-letter code: BZQ) (formula: C<sub>13</sub>H<sub>10</sub>O).



Mol	Chain	Residues	Atoms			ZeroOcc	AltConf
			Total	C	O		
2	A	1	14	13	1	0	0

*Continued on next page...*

*Continued from previous page...*

Mol	Chain	Residues	Atoms			ZeroOcc	AltConf
			Total	C	O		
2	B	1	14	13	1	0	0

- Molecule 3 is water.

Mol	Chain	Residues	Atoms		ZeroOcc	AltConf
3	A	44	Total	O	0	0
			44	44		
3	B	52	Total	O	0	0
			52	52		



## 4 Data and refinement statistics

Property	Value	Source
Space group	P 1 21 1	Depositor
Cell constants a, b, c, $\alpha$ , $\beta$ , $\gamma$	55.59Å 65.21Å 42.15Å 90.00° 98.32° 90.00°	Depositor
Resolution (Å)	17.90 – 2.08 19.56 – 2.08	Depositor EDS
% Data completeness (in resolution range)	86.6 (17.90-2.08) 86.3 (19.56-2.08)	Depositor EDS
$R_{merge}$	0.05	Depositor
$R_{sym}$	(Not available)	Depositor
$\langle I/\sigma(I) \rangle$ <sup>1</sup>	3.37 (at 2.07Å)	Xtrriage
Refinement program	CNS 1.0	Depositor
R, $R_{free}$	0.188 , 0.228 0.189 , 0.224	Depositor DCC
$R_{free}$ test set	1408 reflections (9.07%)	wwPDB-VP
Wilson B-factor (Å <sup>2</sup> )	29.5	Xtrriage
Anisotropy	0.412	Xtrriage
Bulk solvent $k_{sol}$ (e/Å <sup>3</sup> ), $B_{sol}$ (Å <sup>2</sup> )	0.30 , 60.8	EDS
L-test for twinning <sup>2</sup>	$\langle  L  \rangle = 0.50$ , $\langle L^2 \rangle = 0.33$	Xtrriage
Estimated twinning fraction	No twinning to report.	Xtrriage
$F_o, F_c$ correlation	0.96	EDS
Total number of atoms	2744	wwPDB-VP
Average B, all atoms (Å <sup>2</sup> )	34.0	wwPDB-VP

Xtrriage's analysis on translational NCS is as follows: *The largest off-origin peak in the Patterson function is 9.62% of the height of the origin peak. No significant pseudotranslation is detected.*

<sup>1</sup>Intensities estimated from amplitudes.

<sup>2</sup>Theoretical values of  $\langle |L| \rangle$ ,  $\langle L^2 \rangle$  for acentric reflections are 0.5, 0.333 respectively for untwinned datasets, and 0.375, 0.2 for perfectly twinned datasets.

## 5 Model quality [i](#)

### 5.1 Standard geometry [i](#)

Bond lengths and bond angles in the following residue types are not validated in this section: BZQ

The Z score for a bond length (or angle) is the number of standard deviations the observed value is removed from the expected value. A bond length (or angle) with  $|Z| > 5$  is considered an outlier worth inspection. RMSZ is the root-mean-square of all Z scores of the bond lengths (or angles).

Mol	Chain	Bond lengths		Bond angles	
		RMSZ	# Z  >5	RMSZ	# Z  >5
1	A	7.08	10/1357 (0.7%)	4.61	12/1834 (0.7%)
1	B	9.90	6/1323 (0.5%)	3.64	8/1789 (0.4%)
All	All	8.59	16/2680 (0.6%)	4.16	20/3623 (0.6%)

Chiral center outliers are detected by calculating the chiral volume of a chiral center and verifying if the center is modelled as a planar moiety or with the opposite hand. A planarity outlier is detected by checking planarity of atoms in a peptide group, atoms in a mainchain group or atoms of a sidechain that are expected to be planar.

Mol	Chain	#Chirality outliers	#Planarity outliers
1	A	0	1
1	B	0	1
All	All	0	2

All (16) bond length outliers are listed below:

Mol	Chain	Res	Type	Atoms	Z	Observed(Å)	Ideal(Å)
1	B	28[A]	GLU	CD-OE2	230.64	3.79	1.25
1	B	28[B]	GLU	CD-OE2	230.64	3.79	1.25
1	A	89[A]	PHE	CE1-CZ	158.59	4.38	1.37
1	A	89[B]	PHE	CE1-CZ	158.59	4.38	1.37
1	B	28[A]	GLU	CG-CD	100.11	3.02	1.51
1	B	28[B]	GLU	CG-CD	100.11	3.02	1.51
1	A	89[A]	PHE	CD1-CE1	66.18	2.71	1.39
1	A	89[B]	PHE	CD1-CE1	66.18	2.71	1.39
1	A	89[A]	PHE	CD2-CE2	60.97	2.61	1.39
1	A	89[B]	PHE	CD2-CE2	60.97	2.61	1.39
1	B	28[A]	GLU	CD-OE1	38.62	1.68	1.25
1	B	28[B]	GLU	CD-OE1	38.62	1.68	1.25
1	A	89[A]	PHE	CG-CD2	-24.22	1.02	1.38
1	A	89[B]	PHE	CG-CD2	-24.22	1.02	1.38

*Continued on next page...*

Continued from previous page...

Mol	Chain	Res	Type	Atoms	Z	Observed(Å)	Ideal(Å)
1	A	89[A]	PHE	C-O	-5.11	1.13	1.23
1	A	89[B]	PHE	C-O	-5.11	1.13	1.23

All (20) bond angle outliers are listed below:

Mol	Chain	Res	Type	Atoms	Z	Observed(°)	Ideal(°)
1	B	28[A]	GLU	OE1-CD-OE2	-91.42	13.60	123.30
1	B	28[B]	GLU	OE1-CD-OE2	-91.42	13.60	123.30
1	A	89[A]	PHE	CD1-CG-CD2	-87.43	4.64	118.30
1	A	89[B]	PHE	CD1-CG-CD2	-87.43	4.64	118.30
1	A	89[A]	PHE	CD1-CE1-CZ	-75.53	29.47	120.10
1	A	89[B]	PHE	CD1-CE1-CZ	-75.53	29.47	120.10
1	A	89[A]	PHE	CG-CD2-CE2	-47.34	68.72	120.80
1	A	89[B]	PHE	CG-CD2-CE2	-47.34	68.72	120.80
1	A	89[A]	PHE	CZ-CE2-CD2	-43.55	67.84	120.10
1	A	89[B]	PHE	CZ-CE2-CD2	-43.55	67.84	120.10
1	B	28[A]	GLU	CG-CD-OE2	-39.62	39.06	118.30
1	B	28[B]	GLU	CG-CD-OE2	-39.62	39.06	118.30
1	A	89[A]	PHE	CG-CD1-CE1	-35.55	81.70	120.80
1	A	89[B]	PHE	CG-CD1-CE1	-35.55	81.70	120.80
1	B	28[A]	GLU	CG-CD-OE1	-33.33	51.64	118.30
1	B	28[B]	GLU	CG-CD-OE1	-33.33	51.64	118.30
1	B	28[A]	GLU	CB-CG-CD	-21.39	56.44	114.20
1	B	28[B]	GLU	CB-CG-CD	-21.39	56.44	114.20
1	A	89[A]	PHE	CE1-CZ-CE2	-19.54	84.83	120.00
1	A	89[B]	PHE	CE1-CZ-CE2	-19.54	84.83	120.00

There are no chirality outliers.

All (2) planarity outliers are listed below:

Mol	Chain	Res	Type	Group
1	A	89[A]	PHE	Sidechain
1	B	28[A]	GLU	Sidechain

## 5.2 Too-close contacts

In the following table, the Non-H and H(model) columns list the number of non-hydrogen atoms and hydrogen atoms in the chain respectively. The H(added) column lists the number of hydrogen atoms added and optimized by MolProbity. The Clashes column lists the number of clashes within the asymmetric unit, whereas Symm-Clashes lists symmetry-related clashes.



Mol	Chain	Non-H	H(model)	H(added)	Clashes	Symm-Clashes
1	A	1326	0	1255	56	0
1	B	1294	0	1225	43	0
2	A	14	0	10	0	0
2	B	14	0	10	0	0
3	A	44	0	0	5	0
3	B	52	0	0	3	0
All	All	2744	0	2500	95	0

The all-atom clashscore is defined as the number of clashes found per 1000 atoms (including hydrogen atoms). The all-atom clashscore for this structure is 18.

All (95) close contacts within the same asymmetric unit are listed below, sorted by their clash magnitude.

Atom-1	Atom-2	Interatomic distance (Å)	Clash overlap (Å)
1:A:89[B]:PHE:CD2	1:A:89[B]:PHE:CG	1.98	1.49
1:A:89[B]:PHE:CD2	1:A:89[B]:PHE:CB	2.05	1.39
1:B:28[B]:GLU:OE2	1:B:28[B]:GLU:CD	1.67	1.33
1:B:28[A]:GLU:OE1	1:B:28[A]:GLU:CD	1.68	1.30
1:A:89[B]:PHE:CD2	1:A:89[B]:PHE:HB2	1.63	1.25
1:A:89[B]:PHE:CZ	1:A:89[B]:PHE:CD1	2.39	1.10
1:A:89[B]:PHE:CG	1:A:89[B]:PHE:CE2	2.40	1.09
1:A:89[A]:PHE:CD1	1:A:89[A]:PHE:CZ	2.42	1.08
1:A:89[A]:PHE:CE2	1:A:89[A]:PHE:CG	2.43	1.07
1:A:89[A]:PHE:CZ	1:A:89[A]:PHE:CD2	2.45	1.05
1:B:108:LYS:HD3	1:B:108:LYS:H	1.21	1.02
1:A:89[B]:PHE:HB3	1:A:103:ASN:HD22	1.27	0.99
1:B:96:ARG:HD2	3:B:2029:HOH:O	1.66	0.94
1:B:28[A]:GLU:CD	1:B:28[A]:GLU:HB2	1.90	0.91
1:B:28[B]:GLU:CD	1:B:28[B]:GLU:HB3	1.94	0.87
1:A:89[A]:PHE:CE2	1:A:89[A]:PHE:CD2	2.61	0.86
1:B:60:ARG:HH21	1:B:65:LYS:HE3	1.44	0.82
1:B:28[A]:GLU:CD	1:B:28[A]:GLU:CB	2.52	0.78
1:A:89[A]:PHE:CD1	1:A:89[A]:PHE:CE1	2.71	0.78
1:B:28[B]:GLU:CD	1:B:28[B]:GLU:CB	2.54	0.75
1:A:120:VAL:HG21	1:B:122:LEU:HD21	1.70	0.73
1:A:89[A]:PHE:CD2	1:A:89[A]:PHE:CE1	2.76	0.73
1:A:89[B]:PHE:HB3	1:A:103:ASN:ND2	2.03	0.73
1:B:28[B]:GLU:OE1	1:B:28[B]:GLU:CG	2.37	0.72
1:A:89[B]:PHE:CD2	1:A:89[B]:PHE:CE1	2.78	0.72
1:B:28[B]:GLU:OE2	1:B:28[B]:GLU:CG	2.38	0.71
1:B:28[A]:GLU:OE1	1:B:28[A]:GLU:CG	2.37	0.71
1:A:89[A]:PHE:CE1	1:A:89[A]:PHE:HB3	2.25	0.70

*Continued on next page...*

*Continued from previous page...*

Atom-1	Atom-2	Interatomic distance (Å)	Clash overlap (Å)
1:B:28[A]:GLU:CG	1:B:28[A]:GLU:OE2	2.39	0.70
1:B:87:ASN:HB3	1:B:103:ASN:HD21	1.55	0.70
1:B:18:ARG:HH12	1:B:154:ASN:ND2	1.89	0.69
1:B:26:ASN:OD1	1:B:28[B]:GLU:HG2	1.93	0.68
1:B:86[A]:GLN:HG2	3:B:2027:HOH:O	1.93	0.67
1:A:89[A]:PHE:CG	1:A:89[A]:PHE:CE1	2.87	0.63
1:B:59:LYS:NZ	1:B:62:GLY:HA2	2.13	0.63
1:B:18:ARG:HH12	1:B:154:ASN:HD21	1.47	0.63
1:B:108:LYS:HD3	1:B:108:LYS:N	2.04	0.63
1:A:87:ASN:HB3	1:A:103:ASN:HD21	1.63	0.62
1:B:53:ASP:OD2	1:B:68:HIS:HE1	1.83	0.62
1:B:28[A]:GLU:OE2	1:B:28[A]:GLU:HG2	2.01	0.60
1:A:38:THR:HG22	1:A:58:VAL:CG1	2.32	0.60
1:A:96:ARG:NH1	3:A:2023:HOH:O	2.35	0.60
1:A:156:PRO:HG3	1:B:64:TRP:CZ3	2.38	0.59
1:A:89[A]:PHE:CE1	1:A:89[A]:PHE:CB	2.86	0.59
1:B:28[A]:GLU:OE1	1:B:28[A]:GLU:OE2	2.19	0.59
1:A:33:ASN:HD21	1:A:61:ASP:H	1.52	0.58
1:B:28[B]:GLU:OE2	1:B:28[B]:GLU:OE1	2.20	0.58
1:B:144:LYS:HD2	1:B:145:ASN:ND2	2.18	0.57
1:A:159:GLU:HA	1:B:157:HIS:CE1	2.39	0.57
1:A:89[B]:PHE:CG	1:A:89[B]:PHE:CE1	2.93	0.57
1:A:120:VAL:HG21	1:B:122:LEU:CD2	2.35	0.57
1:A:108:LYS:HG2	3:A:2025:HOH:O	2.04	0.56
1:A:151:GLU:O	1:A:151:GLU:HG3	2.05	0.56
1:A:35:PRO:HB2	1:A:84:GLU:HG3	1.89	0.54
1:B:35:PRO:HB2	1:B:84:GLU:HG3	1.90	0.54
1:A:96:ARG:HG2	3:A:2023:HOH:O	2.07	0.53
1:A:35:PRO:HB3	1:A:60:ARG:NH2	2.24	0.53
1:A:37:ARG:HD3	1:A:159:GLU:OE2	2.09	0.53
1:A:87:ASN:ND2	1:A:105:ASN:HD22	2.06	0.53
1:B:60:ARG:HH11	1:B:60:ARG:HG3	1.76	0.50
1:A:74:GLN:NE2	1:A:80:VAL:HG23	2.26	0.50
1:B:60:ARG:NH2	1:B:65:LYS:HG3	2.27	0.50
1:A:35:PRO:CB	1:A:60:ARG:HH21	2.25	0.49
1:A:12:GLU:CD	3:A:2023:HOH:O	2.51	0.49
1:A:151:GLU:HB3	3:A:2044:HOH:O	2.13	0.49
1:A:60:ARG:HH22	1:A:84:GLU:CD	2.16	0.49
1:A:27:PRO:O	1:A:31:GLN:HG3	2.13	0.48
1:B:53:ASP:OD2	1:B:68:HIS:CE1	2.65	0.48
1:B:151:GLU:OE2	1:B:151:GLU:HA	2.15	0.47

*Continued on next page...*

Continued from previous page...

Atom-1	Atom-2	Interatomic distance (Å)	Clash overlap (Å)
1:A:13:LEU:HD12	1:A:13:LEU:N	2.30	0.47
1:A:35:PRO:HA	1:A:60:ARG:HE	1.79	0.47
1:A:106:VAL:HA	1:A:111:GLN:O	2.15	0.47
1:A:87:ASN:HD21	1:A:105:ASN:HD22	1.61	0.46
1:B:148:ASN:C	1:B:148:ASN:HD22	2.18	0.45
1:B:59:LYS:HZ3	1:B:62:GLY:HA2	1.79	0.44
1:B:59:LYS:HZ1	1:B:62:GLY:HA2	1.82	0.44
1:B:28[B]:GLU:OE1	1:B:28[B]:GLU:HG3	2.16	0.44
1:A:107:ASP:OD2	1:A:111:GLN:HB2	2.18	0.44
1:A:93:SER:OG	1:A:98:HIS:HE1	2.01	0.43
1:B:108:LYS:H	1:B:108:LYS:CD	1.98	0.43
1:A:8:GLN:HG3	1:A:10:LEU:HG	2.00	0.43
1:B:148:ASN:HB3	3:B:2043:HOH:O	2.18	0.42
1:B:32:GLU:O	1:B:33:ASN:HB2	2.18	0.42
1:A:9:ASN:HD22	1:A:9:ASN:HA	1.53	0.42
1:A:10:LEU:HA	1:A:13:LEU:HD13	2.00	0.42
1:A:35:PRO:CB	1:A:60:ARG:NH2	2.82	0.42
1:A:89[B]:PHE:CB	1:A:103:ASN:HD22	2.12	0.42
1:A:20:VAL:HG21	1:A:120:VAL:HG13	2.03	0.41
1:B:27:PRO:O	1:B:31:GLN:HG3	2.21	0.41
1:B:52:VAL:HG23	1:B:79:TYR:CE2	2.55	0.41
1:A:35:PRO:HA	1:A:60:ARG:HH21	1.85	0.41
1:A:150:LEU:HD12	1:A:150:LEU:HA	1.89	0.41
1:A:35:PRO:CA	1:A:60:ARG:HH21	2.34	0.40
1:A:89[B]:PHE:CD2	1:A:89[B]:PHE:HB3	2.33	0.40
1:A:142:ASP:OD1	1:A:144:LYS:HB3	2.21	0.40

There are no symmetry-related clashes.

## 5.3 Torsion angles [\(i\)](#)

### 5.3.1 Protein backbone [\(i\)](#)

In the following table, the Percentiles column shows the percent Ramachandran outliers of the chain as a percentile score with respect to all X-ray entries followed by that with respect to entries of similar resolution.

The Analysed column shows the number of residues for which the backbone conformation was analysed, and the total number of residues.

Mol	Chain	Analysed	Favoured	Allowed	Outliers	Percentiles	
1	A	159/159 (100%)	153 (96%)	6 (4%)	0	100	100
1	B	156/159 (98%)	152 (97%)	4 (3%)	0	100	100
All	All	315/318 (99%)	305 (97%)	10 (3%)	0	100	100

There are no Ramachandran outliers to report.

### 5.3.2 Protein sidechains [i](#)

There are no protein residues with a non-rotameric sidechain to report in this entry.

### 5.3.3 RNA [i](#)

There are no RNA molecules in this entry.

## 5.4 Non-standard residues in protein, DNA, RNA chains [i](#)

There are no non-standard protein/DNA/RNA residues in this entry.

## 5.5 Carbohydrates [i](#)

There are no monosaccharides in this entry.

## 5.6 Ligand geometry [i](#)

2 ligands are modelled in this entry.

In the following table, the Counts columns list the number of bonds (or angles) for which Mogul statistics could be retrieved, the number of bonds (or angles) that are observed in the model and the number of bonds (or angles) that are defined in the Chemical Component Dictionary. The Link column lists molecule types, if any, to which the group is linked. The Z score for a bond length (or angle) is the number of standard deviations the observed value is removed from the expected value. A bond length (or angle) with  $|Z| > 2$  is considered an outlier worth inspection. RMSZ is the root-mean-square of all Z scores of the bond lengths (or angles).

Mol	Type	Chain	Res	Link	Bond lengths			Bond angles		
					Counts	RMSZ	# Z  > 2	Counts	RMSZ	# Z  > 2
2	BZQ	A	1160	-	15,15,15	3.16	4 (26%)	19,19,19	1.44	2 (10%)
2	BZQ	B	1158	-	15,15,15	3.33	6 (40%)	19,19,19	1.47	2 (10%)

In the following table, the Chirals column lists the number of chiral outliers, the number of chiral centers analysed, the number of these observed in the model and the number defined in the Chemical Component Dictionary. Similar counts are reported in the Torsion and Rings columns. '-' means no outliers of that kind were identified.

Mol	Type	Chain	Res	Link	Chirals	Torsions	Rings
2	BZQ	A	1160	-	-	0/8/8/8	0/2/2/2
2	BZQ	B	1158	-	-	0/8/8/8	0/2/2/2

All (10) bond length outliers are listed below:

Mol	Chain	Res	Type	Atoms	Z	Observed(Å)	Ideal(Å)
2	B	1158	BZQ	O-C7	10.83	1.42	1.22
2	A	1160	BZQ	O-C7	10.33	1.41	1.22
2	B	1158	BZQ	C4-C5	3.13	1.44	1.39
2	A	1160	BZQ	C4-C5	3.02	1.44	1.39
2	B	1158	BZQ	C5-C7	2.46	1.53	1.49
2	A	1160	BZQ	C2-C1	2.40	1.44	1.38
2	B	1158	BZQ	C2-C1	2.27	1.44	1.38
2	A	1160	BZQ	C3-C4	2.24	1.43	1.38
2	B	1158	BZQ	C9-C7	2.18	1.53	1.49
2	B	1158	BZQ	C6-C5	2.02	1.42	1.39

All (4) bond angle outliers are listed below:

Mol	Chain	Res	Type	Atoms	Z	Observed(°)	Ideal(°)
2	A	1160	BZQ	C9-C7-C5	4.32	127.39	120.28
2	B	1158	BZQ	C9-C7-C5	4.17	127.14	120.28
2	A	1160	BZQ	O-C7-C9	-3.22	115.00	120.12
2	B	1158	BZQ	O-C7-C9	-2.91	115.48	120.12

There are no chirality outliers.

There are no torsion outliers.

There are no ring outliers.

No monomer is involved in short contacts.

## 5.7 Other polymers [i](#)

There are no such residues in this entry.

## 5.8 Polymer linkage issues

There are no chain breaks in this entry.

## 6 Fit of model and data [i](#)

### 6.1 Protein, DNA and RNA chains [i](#)

In the following table, the column labelled ‘#RSRZ > 2’ contains the number (and percentage) of RSRZ outliers, followed by percent RSRZ outliers for the chain as percentile scores relative to all X-ray entries and entries of similar resolution. The OWAB column contains the minimum, median, 95<sup>th</sup> percentile and maximum values of the occupancy-weighted average B-factor per residue. The column labelled ‘Q < 0.9’ lists the number of (and percentage) of residues with an average occupancy less than 0.9.

Mol	Chain	Analysed	<RSRZ>	#RSRZ>2	OWAB(Å <sup>2</sup> )	Q<0.9
1	A	159/159 (100%)	0.07	8 (5%) 28 33	19, 35, 61, 70	15 (9%)
1	B	156/159 (98%)	-0.06	5 (3%) 47 53	15, 29, 53, 70	22 (14%)
All	All	315/318 (99%)	0.01	13 (4%) 37 42	15, 32, 61, 70	37 (11%)

All (13) RSRZ outliers are listed below:

Mol	Chain	Res	Type	RSRZ
1	A	1	ALA	9.0
1	B	8	GLN	3.9
1	B	5	GLU	3.9
1	B	6	ALA	3.8
1	A	6	ALA	2.9
1	A	153	GLU	2.9
1	A	152	ASN	2.8
1	A	2	GLN	2.7
1	B	75	ASP	2.6
1	A	7	GLU	2.6
1	A	77	GLY	2.4
1	A	75	ASP	2.4
1	B	158	PRO	2.3

### 6.2 Non-standard residues in protein, DNA, RNA chains [i](#)

There are no non-standard protein/DNA/RNA residues in this entry.

### 6.3 Carbohydrates [i](#)

There are no monosaccharides in this entry.

## 6.4 Ligands [i](#)

In the following table, the Atoms column lists the number of modelled atoms in the group and the number defined in the chemical component dictionary. The B-factors column lists the minimum, median, 95<sup>th</sup> percentile and maximum values of B factors of atoms in the group. The column labelled 'Q< 0.9' lists the number of atoms with occupancy less than 0.9.

Mol	Type	Chain	Res	Atoms	RSCC	RSR	B-factors( $\text{\AA}^2$ )	Q<0.9
2	BZQ	B	1158	14/14	0.88	0.22	31,35,37,37	1
2	BZQ	A	1160	14/14	0.94	0.21	29,33,38,39	1

## 6.5 Other polymers [i](#)

There are no such residues in this entry.