



Full wwPDB EM Validation Report ⓘ

Oct 16, 2023 – 12:27 PM JST

PDB ID : 8GWB
EMDB ID : EMD-34308
Title : SARS-CoV-2 E-RTC complex with RNA-nsp9
Authors : Yan, L.M.; Rao, Z.H.; Lou, Z.Y.
Deposited on : 2022-09-16
Resolution : 2.75 Å (reported)

This is a Full wwPDB EM Validation Report for a publicly released PDB entry.

We welcome your comments at validation@mail.wwpdb.org

A user guide is available at

<https://www.wwpdb.org/validation/2017/EMValidationReportHelp>

with specific help available everywhere you see the ⓘ symbol.

The types of validation reports are described at

<http://www.wwpdb.org/validation/2017/FAQs#types>.

The following versions of software and data (see [references ⓘ](#)) were used in the production of this report:

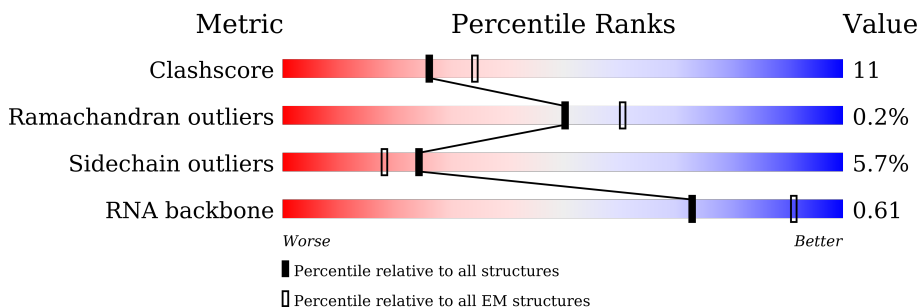
EMDB validation analysis : 0.0.1.dev70
MolProbity : 4.02b-467
Percentile statistics : 20191225.v01 (using entries in the PDB archive December 25th 2019)
MapQ : 1.9.9
Ideal geometry (proteins) : Engh & Huber (2001)
Ideal geometry (DNA, RNA) : Parkinson et al. (1996)
Validation Pipeline (wwPDB-VP) : 2.36

1 Overall quality at a glance i

The following experimental techniques were used to determine the structure:
ELECTRON MICROSCOPY

The reported resolution of this entry is 2.75 Å.

Percentile scores (ranging between 0-100) for global validation metrics of the entry are shown in the following graphic. The table shows the number of entries on which the scores are based.




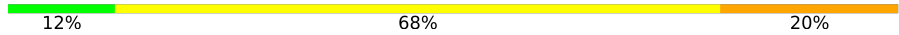

Metric	Whole archive (#Entries)	EM structures (#Entries)
Clashscore	158937	4297
Ramachandran outliers	154571	4023
Sidechain outliers	154315	3826
RNA backbone	4643	859

The table below summarises the geometric issues observed across the polymeric chains and their fit to the map. The red, orange, yellow and green segments of the bar indicate the fraction of residues that contain outliers for ≥ 3 , 2, 1 and 0 types of geometric quality criteria respectively. A grey segment represents the fraction of residues that are not modelled. The numeric value for each fraction is indicated below the corresponding segment, with a dot representing fractions $\leq 5\%$. The upper red bar (where present) indicates the fraction of residues that have poor fit to the EM map (all-atom inclusion $< 40\%$). The numeric value is given above the bar.

Mol	Chain	Length	Quality of chain
1	A	932	68% 29% ..
2	B	198	74% 18% • 6%
2	D	198	70% 22% • 6%
3	C	83	65% 20% • 13%
4	E	601	76% 20% ..
4	F	601	77% 18% ..
5	G	117	66% 25% 6% •

Continued on next page...

Continued from previous page...

Mol	Chain	Length	Quality of chain
6	M	2	 50% 50%
7	I	25	 12% 68% 20%
8	J	33	 18% 55% 9% 18%

2 Entry composition [i](#)

There are 11 unique types of molecules in this entry. The entry contains 21891 atoms, of which 0 are hydrogens and 0 are deuteriums.

In the tables below, the AltConf column contains the number of residues with at least one atom in alternate conformation and the Trace column contains the number of residues modelled with at most 2 atoms.

- Molecule 1 is a protein called RNA-directed RNA polymerase.

Mol	Chain	Residues	Atoms					AltConf	Trace
			Total	C	N	O	S		
1	A	926	7462	4766	1252	1390	54	0	0

- Molecule 2 is a protein called Non-structural protein 8.

Mol	Chain	Residues	Atoms					AltConf	Trace
			Total	C	N	O	S		
2	B	187	1400	873	241	275	11	0	0
2	D	186	1418	892	243	272	11	0	0

- Molecule 3 is a protein called Non-structural protein 7.

Mol	Chain	Residues	Atoms					AltConf	Trace
			Total	C	N	O	S		
3	C	72	553	349	91	107	6	0	0

- Molecule 4 is a protein called Helicase.

Mol	Chain	Residues	Atoms					AltConf	Trace
			Total	C	N	O	S		
4	F	585	4508	2875	750	848	35	1	0
4	E	586	4513	2878	751	849	35	1	0

- Molecule 5 is a protein called Non-structural protein 9.

Mol	Chain	Residues	Atoms					AltConf	Trace
			Total	C	N	O	S		
5	G	113	868	549	150	164	5	0	0

There are 4 discrepancies between the modelled and reference sequences:

Chain	Residue	Modelled	Actual	Comment	Reference
G	-3	SER	-	expression tag	UNP P0DTD1
G	-2	ASN	-	expression tag	UNP P0DTD1
G	-1	ALA	-	expression tag	UNP P0DTD1
G	0	MET	-	expression tag	UNP P0DTD1

- Molecule 6 is a RNA chain called RNA (5'-R(P*AP*U)-3').

Mol	Chain	Residues	Atoms				AltConf	Trace	
			Total	C	N	O	P		
6	M	2	42	19	7	14	2	0	0

- Molecule 7 is a RNA chain called primer.

Mol	Chain	Residues	Atoms				AltConf	Trace	
			Total	C	N	O	P		
7	I	25	545	242	105	173	25	0	0

- Molecule 8 is a RNA chain called template.

Mol	Chain	Residues	Atoms				AltConf	Trace	
			Total	C	N	O	P		
8	J	27	565	253	94	191	27	0	0

- Molecule 9 is ZINC ION (three-letter code: ZN) (formula: Zn) (labeled as "Ligand of Interest" by depositor).

Mol	Chain	Residues	Atoms		AltConf
9	A	2	Total	Zn	0
			2	2	
9	F	3	Total	Zn	0
			3	3	
9	E	3	Total	Zn	0
			3	3	

- Molecule 10 is MANGANESE (II) ION (three-letter code: MN) (formula: Mn) (labeled as "Ligand of Interest" by depositor).

Mol	Chain	Residues	Atoms		AltConf
10	A	2	Total	Mn	0
			2	2	

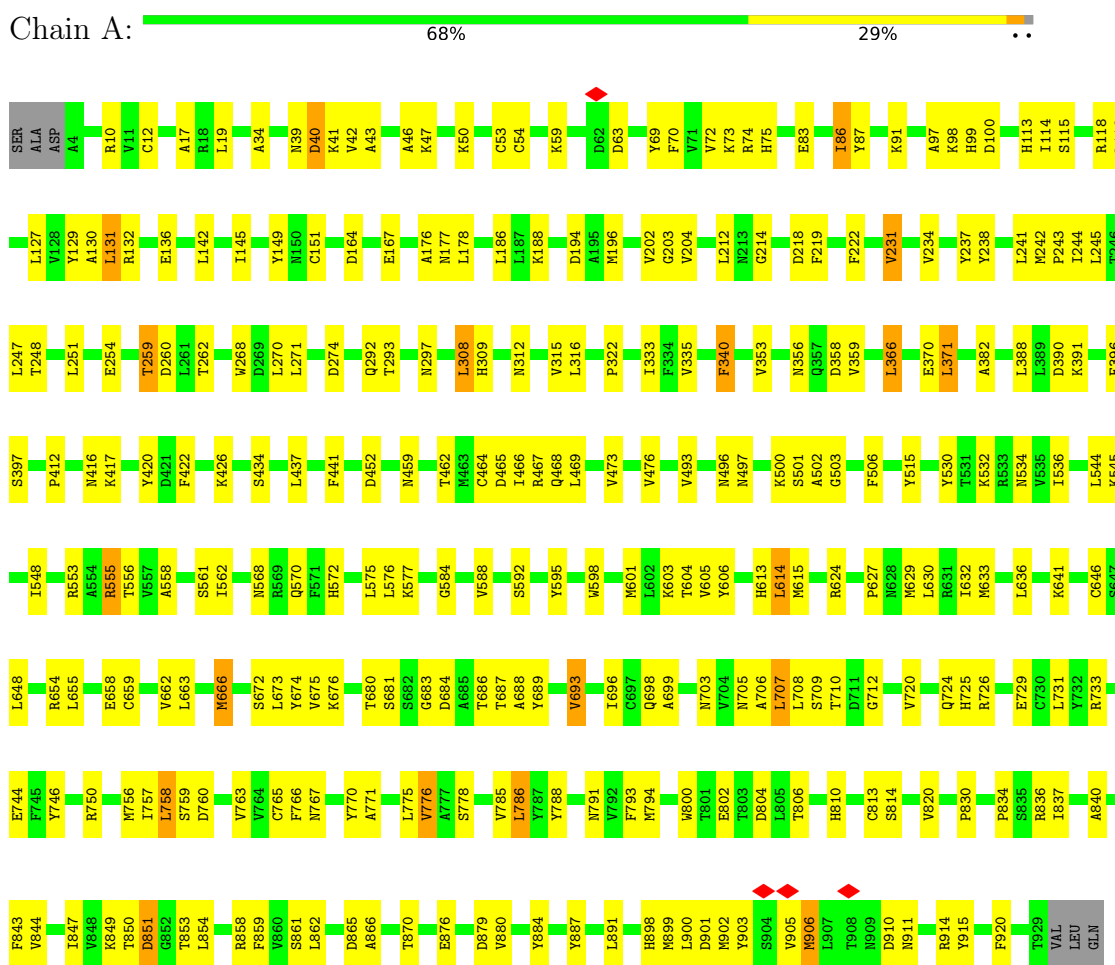
- Molecule 11 is water.

Mol	Chain	Residues	Atoms		AltConf
11	A	7	Total	O	0
			7	7	

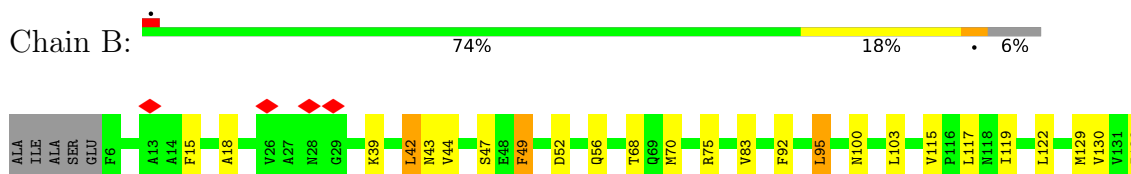
3 Residue-property plots

These plots are drawn for all protein, RNA, DNA and oligosaccharide chains in the entry. The first graphic for a chain summarises the proportions of the various outlier classes displayed in the second graphic. The second graphic shows the sequence view annotated by issues in geometry and atom inclusion in map density. Residues are color-coded according to the number of geometric quality criteria for which they contain at least one outlier: green = 0, yellow = 1, orange = 2 and red = 3 or more. A red diamond above a residue indicates a poor fit to the EM map for this residue (all-atom inclusion < 40%). Stretches of 2 or more consecutive residues without any outlier are shown as a green connector. Residues present in the sample, but not in the model, are shown in grey.

- Molecule 1: RNA-directed RNA polymerase

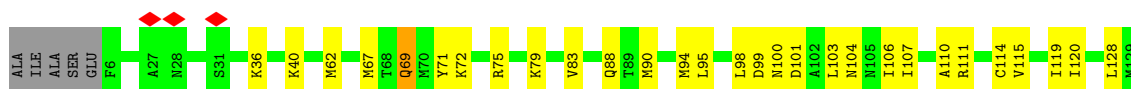


- Molecule 2: Non-structural protein 8





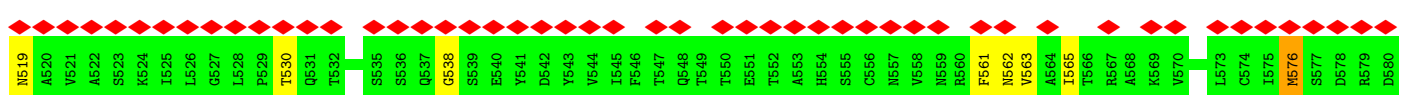
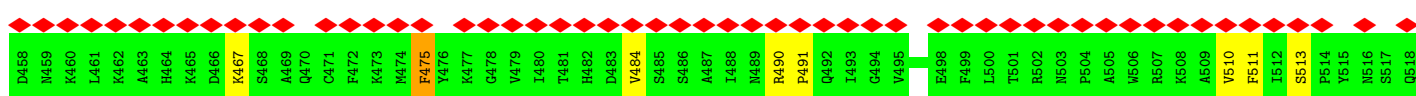
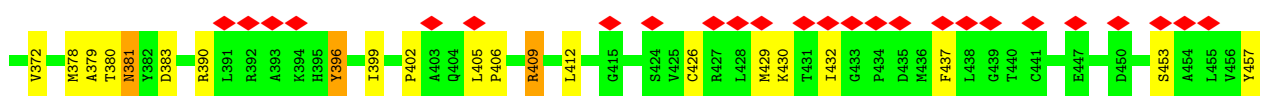
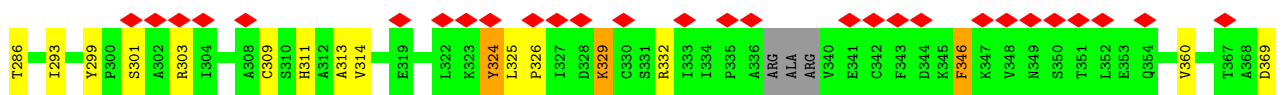
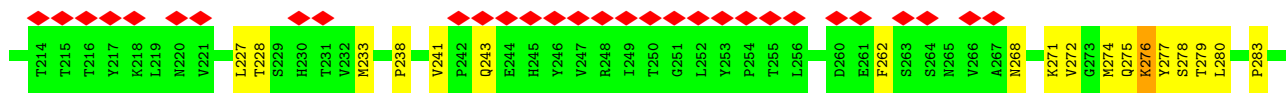
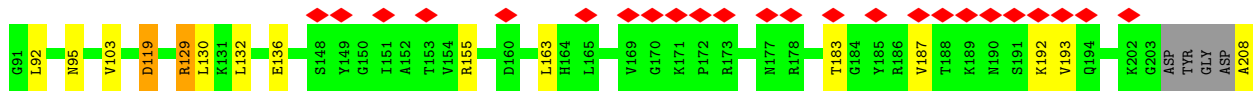
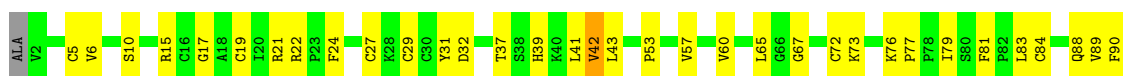
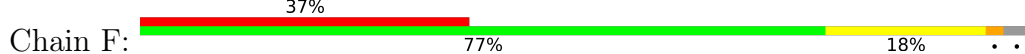
• Molecule 2: Non-structural protein 8

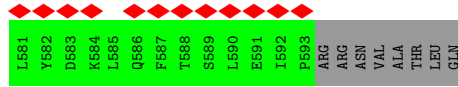


• Molecule 3: Non-structural protein 7

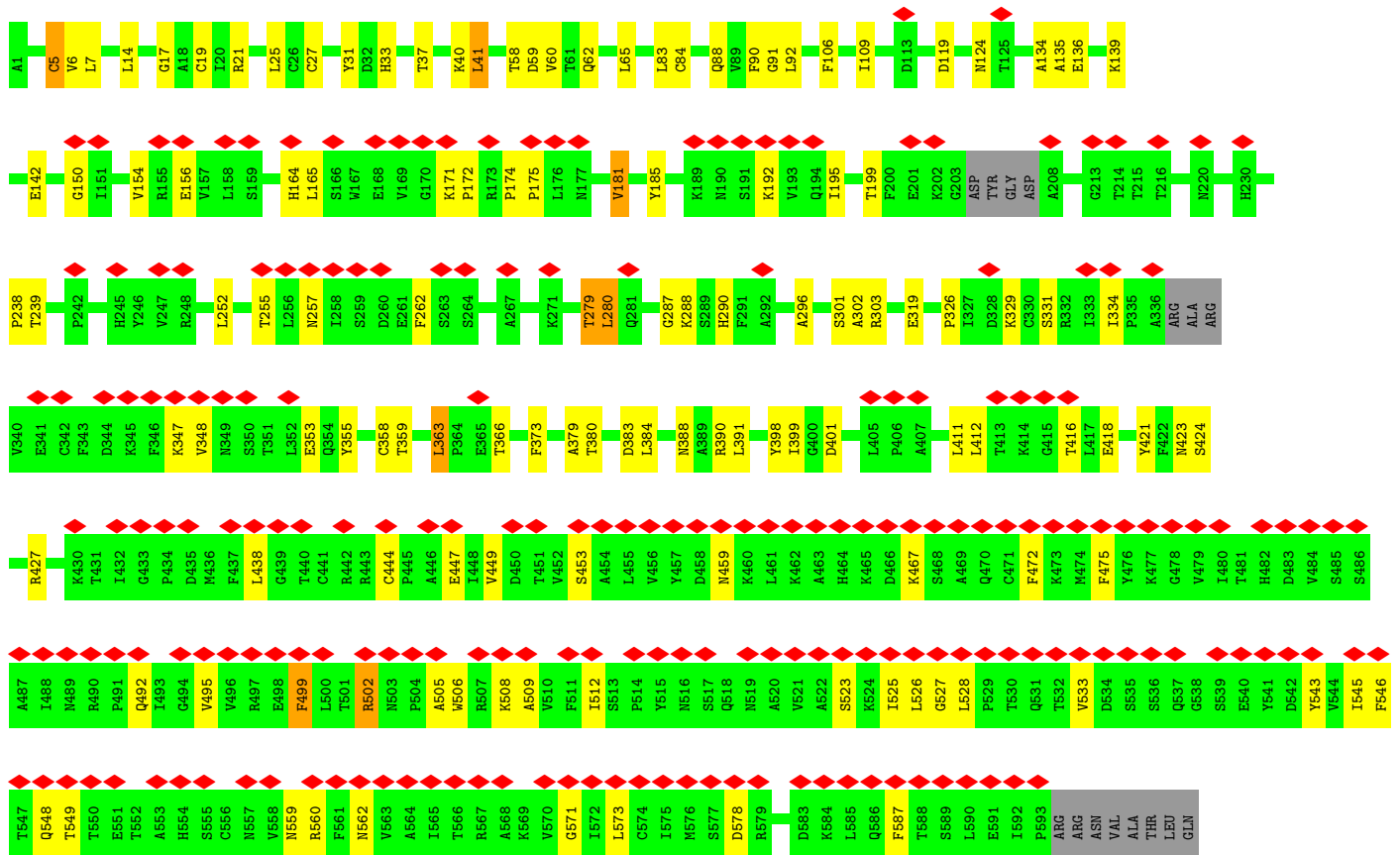
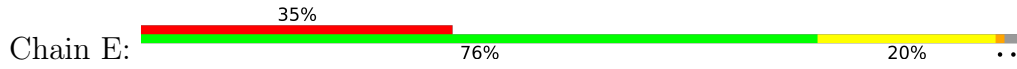


• Molecule 4: Helicase

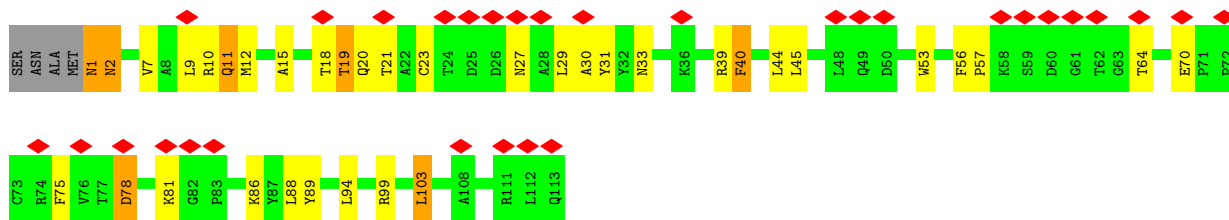




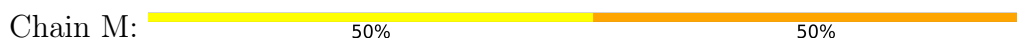
• Molecule 4: Helicase



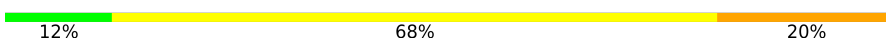
• Molecule 5: Non-structural protein 9



• Molecule 6: RNA (5'-R(P*AP*U)-3')

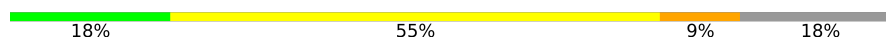


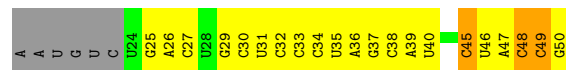
● Molecule 7: primer

Chain I:  12% 68% 20%



● Molecule 8: template

Chain J:  18% 55% 9% 18%



4 Experimental information

Property	Value	Source
EM reconstruction method	SINGLE PARTICLE	Depositor
Imposed symmetry	POINT, Not provided	
Number of particles used	1681356	Depositor
Resolution determination method	FSC 0.143 CUT-OFF	Depositor
CTF correction method	PHASE FLIPPING AND AMPLITUDE CORRECTION	Depositor
Microscope	FEI TITAN KRIOS	Depositor
Voltage (kV)	300	Depositor
Electron dose ($e^-/\text{\AA}^2$)	60	Depositor
Minimum defocus (nm)	1000	Depositor
Maximum defocus (nm)	2000	Depositor
Magnification	Not provided	
Image detector	GATAN K2 QUANTUM (4k x 4k)	Depositor
Maximum map value	2.368	Depositor
Minimum map value	-1.033	Depositor
Average map value	-0.000	Depositor
Map value standard deviation	0.053	Depositor
Recommended contour level	0.2	Depositor
Map size (Å)	367.36, 367.36, 367.36	wwPDB
Map dimensions	448, 448, 448	wwPDB
Map angles (°)	90.0, 90.0, 90.0	wwPDB
Pixel spacing (Å)	0.82, 0.82, 0.82	Depositor

5 Model quality i

5.1 Standard geometry i

Bond lengths and bond angles in the following residue types are not validated in this section: ZN, MN

The Z score for a bond length (or angle) is the number of standard deviations the observed value is removed from the expected value. A bond length (or angle) with $|Z| > 5$ is considered an outlier worth inspection. RMSZ is the root-mean-square of all Z scores of the bond lengths (or angles).

Mol	Chain	Bond lengths		Bond angles	
		RMSZ	# Z >5	RMSZ	# Z >5
1	A	0.30	0/7651	0.48	1/10383 (0.0%)
2	B	0.34	0/1418	0.56	2/1927 (0.1%)
2	D	0.24	0/1437	0.46	0/1948
3	C	0.22	0/556	0.40	0/749
4	E	0.24	0/4615	0.46	0/6290
4	F	0.24	0/4610	0.45	0/6283
5	G	0.66	1/884 (0.1%)	0.61	2/1200 (0.2%)
6	M	0.50	0/46	1.24	1/69 (1.4%)
7	I	0.38	0/611	0.81	0/953
8	J	0.38	0/628	0.78	0/974
All	All	0.30	1/22456 (0.0%)	0.51	6/30776 (0.0%)

Chiral center outliers are detected by calculating the chiral volume of a chiral center and verifying if the center is modelled as a planar moiety or with the opposite hand. A planarity outlier is detected by checking planarity of atoms in a peptide group, atoms in a mainchain group or atoms of a sidechain that are expected to be planar.

Mol	Chain	#Chirality outliers	#Planarity outliers
1	A	0	1

All (1) bond length outliers are listed below:

Mol	Chain	Res	Type	Atoms	Z	Observed(Å)	Ideal(Å)
5	G	1	ASN	C-N	18.10	1.75	1.34

All (6) bond angle outliers are listed below:

Mol	Chain	Res	Type	Atoms	Z	Observed(°)	Ideal(°)
5	G	1	ASN	O-C-N	7.97	135.45	122.70
6	M	1	A	OP1-P-OP2	-7.80	107.90	119.60

Continued on next page...

Continued from previous page...

Mol	Chain	Res	Type	Atoms	Z	Observed(°)	Ideal(°)
2	B	182	TRP	N-CA-C	7.74	131.89	111.00
5	G	1	ASN	CA-C-N	-7.34	101.06	117.20
2	B	183	PRO	N-CA-C	-6.47	95.27	112.10
1	A	851	ASP	N-CA-CB	5.33	120.20	110.60

There are no chirality outliers.

All (1) planarity outliers are listed below:

Mol	Chain	Res	Type	Group
1	A	844	VAL	Mainchain

5.2 Too-close contacts [i](#)

In the following table, the Non-H and H(model) columns list the number of non-hydrogen atoms and hydrogen atoms in the chain respectively. The H(added) column lists the number of hydrogen atoms added and optimized by MolProbity. The Clashes column lists the number of clashes within the asymmetric unit, whereas Symm-Clashes lists symmetry-related clashes.

Mol	Chain	Non-H	H(model)	H(added)	Clashes	Symm-Clashes
1	A	7462	0	7202	218	0
2	B	1400	0	1372	25	0
2	D	1418	0	1427	50	0
3	C	553	0	585	16	0
4	E	4513	0	4431	61	0
4	F	4508	0	4423	95	0
5	G	868	0	876	21	0
6	M	42	0	22	3	0
7	I	545	0	272	38	0
8	J	565	0	291	62	0
9	A	2	0	0	0	0
9	E	3	0	0	0	0
9	F	3	0	0	0	0
10	A	2	0	0	0	0
11	A	7	0	0	2	0
All	All	21891	0	20901	477	0

The all-atom clashscore is defined as the number of clashes found per 1000 atoms (including hydrogen atoms). The all-atom clashscore for this structure is 11.

All (477) close contacts within the same asymmetric unit are listed below, sorted by their clash magnitude.

Atom-1	Atom-2	Interatomic distance (Å)	Clash overlap (Å)
2:D:62:MET:SD	8:J:35:U:H5''	1.54	1.47
2:D:62:MET:CE	8:J:35:U:H5''	1.44	1.46
1:A:858:ARG:HG3	7:I:30:G:C5'	1.43	1.43
5:G:1:ASN:C	5:G:2:ASN:N	1.75	1.36
2:D:62:MET:HE1	8:J:35:U:C5'	1.62	1.29
4:F:77:PRO:CB	8:J:36:A:H5''	1.66	1.25
4:F:77:PRO:HB3	8:J:36:A:C5'	1.80	1.10
1:A:858:ARG:HG3	7:I:30:G:H5''	1.27	1.10
2:D:62:MET:SD	8:J:35:U:C5'	2.38	1.10
1:A:858:ARG:HG3	7:I:30:G:H5'	1.14	1.09
4:F:77:PRO:HB3	8:J:36:A:C4'	1.82	1.09
2:D:36:LYS:HE2	2:D:40:LYS:HE3	1.33	1.04
2:D:62:MET:CE	8:J:35:U:C5'	2.24	1.03
2:D:62:MET:HE1	8:J:35:U:O5'	1.58	1.02
4:F:77:PRO:HB3	8:J:36:A:H5''	1.29	1.02
1:A:858:ARG:CG	7:I:30:G:H5'	1.88	1.01
1:A:858:ARG:CG	7:I:30:G:C5'	2.38	1.01
2:D:36:LYS:HE2	2:D:40:LYS:CE	1.91	1.00
4:F:77:PRO:CB	8:J:36:A:C5'	2.39	1.00
4:F:77:PRO:HB2	8:J:36:A:H5''	1.46	0.98
1:A:500:LYS:HG3	8:J:27:C:OP2	1.66	0.95
4:F:79:ILE:HB	8:J:36:A:OP1	1.66	0.94
1:A:501:SER:HB3	8:J:26:A:H5'	1.49	0.92
1:A:861:SER:CB	7:I:30:G:H1'	2.00	0.90
4:F:77:PRO:HB3	8:J:36:A:H4'	1.55	0.86
2:D:62:MET:HE1	8:J:35:U:H5''	1.21	0.84
1:A:861:SER:HB3	7:I:30:G:H1'	1.61	0.80
1:A:858:ARG:CG	7:I:30:G:H5''	2.09	0.79
4:F:67:GLY:HA3	8:J:35:U:O2'	1.85	0.76
1:A:502:ALA:HB1	1:A:562:ILE:HB	1.69	0.75
2:D:36:LYS:CE	2:D:40:LYS:HE3	2.12	0.75
1:A:915:TYR:OH	8:J:33:C:H4'	1.86	0.74
1:A:915:TYR:OH	8:J:33:C:C5'	2.35	0.74
1:A:500:LYS:CG	8:J:27:C:OP2	2.35	0.74
1:A:75:HIS:CE1	11:A:1103:HOH:O	2.41	0.74
1:A:595:TYR:HE2	8:J:31:U:H5''	1.53	0.73
2:D:100:ASN:HD22	2:D:103:LEU:H	1.36	0.73
4:F:77:PRO:CB	8:J:36:A:H4'	2.18	0.73
1:A:473:VAL:HG22	1:A:633:MET:HG3	1.70	0.73
2:B:43:ASN:HD21	8:J:46:U:H2'	1.53	0.72
5:G:1:ASN:CA	5:G:2:ASN:N	2.53	0.70
4:F:5:CYS:HB3	4:F:10:SER:H	1.54	0.70

Continued on next page...

Continued from previous page...

Atom-1	Atom-2	Interatomic distance (Å)	Clash overlap (Å)
4:F:402:PRO:HB3	4:F:426:CYS:HB3	1.72	0.70
1:A:503:GLY:HA3	1:A:561:SER:HA	1.74	0.69
1:A:234:VAL:HG23	1:A:237:TYR:HB3	1.75	0.68
1:A:577:LYS:NZ	8:J:29:G:OP1	2.22	0.68
2:D:36:LYS:HE2	2:D:40:LYS:NZ	2.09	0.68
4:F:77:PRO:CG	8:J:36:A:H4'	2.24	0.67
1:A:592:SER:HB2	8:J:30:C:H4'	1.76	0.67
4:F:79:ILE:CB	8:J:36:A:OP1	2.41	0.67
4:F:453:SER:HA	4:F:457:TYR:HB2	1.75	0.67
2:D:171:GLU:O	2:D:176:ASN:ND2	2.28	0.67
1:A:771:ALA:HB1	1:A:778:SER:HB3	1.77	0.66
2:B:92:PHE:HA	2:B:95:LEU:HD23	1.76	0.66
4:E:559:ASN:HA	4:E:562:ASN:HD21	1.59	0.66
1:A:132:ARG:HH11	1:A:243:PRO:HG3	1.61	0.66
1:A:476:VAL:HG11	1:A:693:VAL:HG23	1.76	0.66
4:E:150:GLY:HA2	4:E:171:LYS:HD3	1.77	0.65
1:A:915:TYR:OH	8:J:33:C:H5''	1.97	0.65
5:G:44:LEU:HB2	5:G:89:TYR:HB2	1.78	0.65
1:A:733:ARG:HH22	5:G:2:ASN:HD21	1.43	0.65
5:G:15:ALA:HB1	5:G:23:CYS:HB2	1.77	0.65
1:A:54:CYS:HB2	1:A:72:VAL:HG13	1.80	0.64
4:E:17:GLY:HA3	4:E:41:LEU:HD12	1.79	0.64
2:D:176:ASN:O	2:D:179:ASN:ND2	2.31	0.64
4:F:67:GLY:CA	8:J:35:U:O2'	2.45	0.64
7:I:22:G:H2'	7:I:23:C:C6	2.33	0.64
5:G:1:ASN:C	5:G:2:ASN:CA	2.64	0.64
1:A:786:LEU:HD12	1:A:794:MET:HB2	1.79	0.64
3:C:53:VAL:HG13	2:D:106:ILE:HD13	1.79	0.64
1:A:814:SER:HB2	7:I:33:G:OP1	1.96	0.64
1:A:699:ALA:O	1:A:703:ASN:ND2	2.32	0.63
2:B:130:VAL:HB	2:B:186:VAL:HG13	1.80	0.63
4:F:576:MET:SD	4:F:576:MET:N	2.70	0.63
1:A:356:ASN:HB3	1:A:534:ASN:HD22	1.64	0.63
1:A:858:ARG:CB	7:I:30:G:H5'	2.28	0.62
4:F:77:PRO:HG3	8:J:36:A:H4'	1.80	0.62
4:E:33:HIS:O	4:E:37:THR:OG1	2.17	0.62
1:A:39:ASN:HD21	6:M:1:A:H62	1.46	0.62
2:D:62:MET:CE	8:J:35:U:OP1	2.47	0.62
1:A:910:ASP:O	1:A:911:ASN:ND2	2.32	0.62
2:D:62:MET:HE1	8:J:35:U:P	2.39	0.62
1:A:75:HIS:HE1	11:A:1103:HOH:O	1.79	0.62

Continued on next page...

Continued from previous page...

Atom-1	Atom-2	Interatomic distance (Å)	Clash overlap (Å)
1:A:804:ASP:OD2	1:A:806:THR:OG1	2.17	0.62
2:D:133:PRO:HD2	2:D:137:THR:HG21	1.81	0.62
2:D:176:ASN:OD1	2:D:176:ASN:N	2.32	0.61
5:G:70:GLU:OE2	5:G:99:ARG:NH2	2.33	0.61
7:I:14:A:H61	8:J:47:A:N6	1.98	0.61
4:F:243:GLN:HA	4:F:276:LYS:HD2	1.82	0.61
1:A:836:ARG:NH2	7:I:32:A:OP2	2.34	0.61
1:A:914:ARG:NH2	8:J:33:C:H5''	2.16	0.61
1:A:83:GLU:HG3	1:A:219:PHE:HB2	1.82	0.61
1:A:532:LYS:NZ	1:A:646:CYS:SG	2.74	0.61
4:E:255:THR:OG1	4:E:257:ASN:OD1	2.19	0.60
1:A:605:VAL:HG12	1:A:765:CYS:HB2	1.82	0.60
3:C:23:GLU:HA	3:C:29:TRP:HB2	1.83	0.60
4:F:301:SER:O	4:F:303:ARG:NH1	2.33	0.60
4:F:275:GLN:NE2	4:F:278:SER:OG	2.34	0.60
4:F:283:PRO:HG2	4:F:286:THR:HB	1.82	0.60
4:F:65:LEU:N	4:F:81:PHE:O	2.34	0.60
4:F:27:CYS:SG	4:F:88:GLN:NE2	2.75	0.60
4:E:326:PRO:HB2	4:E:329:LYS:HG2	1.83	0.60
1:A:636:LEU:HD21	1:A:655:LEU:HD22	1.83	0.60
1:A:501:SER:HB3	8:J:26:A:C5'	2.26	0.59
1:A:900:LEU:HD12	1:A:906:MET:HB3	1.82	0.59
4:F:279:THR:OG1	4:F:429:MET:SD	2.60	0.59
4:F:332:ARG:HB2	4:F:346:PHE:HD2	1.67	0.59
1:A:501:SER:N	8:J:26:A:H5''	2.16	0.59
1:A:87:TYR:O	1:A:91:LYS:N	2.35	0.59
1:A:771:ALA:HB2	1:A:776:VAL:HG12	1.83	0.59
4:F:65:LEU:HB3	4:F:81:PHE:HB3	1.85	0.59
1:A:100:ASP:HB3	1:A:115:SER:HB2	1.83	0.59
4:E:303:ARG:NE	4:E:353:GLU:O	2.36	0.59
1:A:149:TYR:HE2	1:A:212:LEU:HD13	1.67	0.58
1:A:568:ASN:OD1	1:A:654:ARG:NH2	2.37	0.58
1:A:501:SER:H	8:J:26:A:H5''	1.68	0.58
2:B:68:THR:HG23	4:F:53:PRO:HG2	1.85	0.58
1:A:452:ASP:OD1	1:A:624:ARG:NH2	2.37	0.58
3:C:71:LEU:HD13	2:D:111:ARG:HE	1.69	0.58
4:F:381:ASN:OD1	4:F:381:ASN:N	2.31	0.58
4:E:41:LEU:HD23	4:E:58:THR:HB	1.85	0.58
2:D:62:MET:HE2	8:J:35:U:OP1	2.03	0.58
2:D:110:ALA:HA	2:D:115:VAL:HG12	1.84	0.58
4:F:77:PRO:HB3	8:J:36:A:C3'	2.33	0.58

Continued on next page...

Continued from previous page...

Atom-1	Atom-2	Interatomic distance (Å)	Clash overlap (Å)
1:A:500:LYS:CB	8:J:27:C:OP2	2.51	0.57
1:A:689:TYR:O	1:A:693:VAL:HG12	2.03	0.57
4:F:84:CYS:HA	4:F:89:VAL:HA	1.85	0.57
1:A:887:TYR:O	1:A:891:LEU:HG	2.04	0.57
1:A:366:LEU:HB2	1:A:370:GLU:HB2	1.86	0.57
1:A:915:TYR:OH	8:J:33:C:C4'	2.52	0.57
1:A:834:PRO:HB3	1:A:880:VAL:HG21	1.86	0.57
1:A:358:ASP:H	1:A:534:ASN:HD21	1.53	0.57
7:I:26:G:H1	8:J:34:C:H42	1.52	0.57
4:F:271:LYS:HA	4:F:274:MET:HG2	1.87	0.57
1:A:260:ASP:OD2	1:A:262:THR:OG1	2.19	0.56
1:A:274:ASP:HA	1:A:353:VAL:HG21	1.87	0.56
1:A:292:GLN:OE1	1:A:467:ARG:NH2	2.37	0.56
4:E:331:SER:OG	4:E:347:LYS:O	2.20	0.56
2:D:177:SER:HB3	2:D:182:TRP:HE1	1.70	0.56
2:B:44:VAL:O	2:B:47:SER:OG	2.23	0.56
1:A:758:LEU:HD23	1:A:759:SER:H	1.71	0.56
4:F:79:ILE:HD12	8:J:36:A:P	2.46	0.56
2:D:132:ILE:HG23	2:D:137:THR:HG23	1.87	0.56
4:E:379:ALA:O	4:E:423:ASN:ND2	2.39	0.56
4:F:187:VAL:HG22	4:F:192:LYS:HB3	1.87	0.56
1:A:333:ILE:O	1:A:340:PHE:N	2.33	0.56
4:E:27:CYS:HB3	4:E:88:GLN:HB2	1.87	0.56
1:A:12:CYS:HB3	1:A:17:ALA:HA	1.87	0.56
3:C:9:THR:HG22	2:D:94:MET:HB3	1.88	0.56
4:F:163:LEU:O	4:F:208:ALA:N	2.38	0.55
2:D:95:LEU:HD13	2:D:107:ILE:HD11	1.88	0.55
1:A:854:LEU:HD11	2:D:75:ARG:HB3	1.88	0.55
3:C:70:LYS:HE3	2:D:88:GLN:HE21	1.72	0.55
4:F:73:LYS:HA	4:F:76:LYS:HD3	1.88	0.55
1:A:584:GLY:HA2	1:A:604:THR:HG21	1.87	0.55
3:C:58:VAL:HG22	2:D:119:ILE:HG12	1.88	0.55
4:F:233:MET:SD	4:F:390:ARG:NH1	2.78	0.55
4:F:313:ALA:HA	4:F:538:GLY:HA3	1.89	0.55
4:E:5:CYS:SG	4:E:6:VAL:N	2.79	0.55
2:B:115:VAL:HB	2:B:119:ILE:HD11	1.89	0.55
4:E:334:ILE:H	4:E:348:VAL:HG13	1.71	0.54
4:E:453:SER:HB2	4:E:459:ASN:HA	1.89	0.54
7:I:22:G:H2'	7:I:23:C:H6	1.71	0.54
1:A:39:ASN:O	1:A:41:LYS:N	2.40	0.54
4:E:156:GLU:HB3	4:E:164:HIS:HB3	1.89	0.54

Continued on next page...

Continued from previous page...

Atom-1	Atom-2	Interatomic distance (Å)	Clash overlap (Å)
5:G:78:ASP:OD1	5:G:78:ASP:N	2.38	0.54
1:A:315:VAL:HG21	1:A:629:MET:HG2	1.90	0.54
1:A:632:ILE:HG23	1:A:655:LEU:HD11	1.89	0.54
1:A:614:LEU:HB2	1:A:802:GLU:HB3	1.90	0.54
1:A:576:LEU:HD11	1:A:686:THR:HG22	1.90	0.54
1:A:837:ILE:O	1:A:884:TYR:OH	2.25	0.54
4:F:57:VAL:HG21	4:F:72:CYS:HB3	1.90	0.54
4:E:358:CYS:SG	4:E:359:THR:N	2.81	0.54
7:I:23:C:H2'	7:I:24:U:H6	1.73	0.54
7:I:23:C:H2'	7:I:24:U:C6	2.42	0.54
1:A:132:ARG:HH12	1:A:465:ASP:HB2	1.72	0.54
4:F:280:LEU:HD21	4:F:399:ILE:HG23	1.90	0.54
2:B:43:ASN:HD22	8:J:47:A:C1'	2.21	0.54
4:E:14:LEU:HD21	4:E:91:GLY:HA3	1.88	0.54
4:E:83:LEU:HD13	4:E:90:PHE:HB3	1.90	0.53
1:A:186:LEU:HD11	1:A:245:LEU:HD22	1.90	0.53
1:A:388:LEU:HD22	1:A:672:SER:HB2	1.90	0.53
2:B:43:ASN:ND2	8:J:46:U:H2'	2.23	0.53
1:A:69:TYR:N	1:A:119:LEU:O	2.40	0.53
4:F:5:CYS:N	4:F:10:SER:O	2.41	0.53
5:G:33:ASN:N	5:G:40:PHE:O	2.41	0.53
2:D:101:ASP:OD1	2:D:101:ASP:N	2.42	0.53
4:E:21:ARG:HG3	4:E:136:GLU:HG3	1.90	0.53
1:A:493:VAL:HG21	1:A:570:GLN:HG2	1.91	0.53
1:A:858:ARG:HG3	7:I:30:G:C4'	2.31	0.53
4:F:79:ILE:CG1	8:J:36:A:OP1	2.56	0.53
1:A:899:MET:HG3	1:A:903:TYR:CZ	2.43	0.53
1:A:851:ASP:CG	2:D:79:LYS:HE3	2.28	0.53
2:B:52:ASP:O	2:B:56:GLN:HB3	2.09	0.53
1:A:858:ARG:NE	7:I:30:G:H5''	2.23	0.53
1:A:130:ALA:HB1	1:A:142:LEU:HB2	1.91	0.53
1:A:688:ALA:HA	1:A:759:SER:HB3	1.90	0.53
4:F:83:LEU:O	4:F:90:PHE:N	2.37	0.53
2:D:120:ILE:HG22	2:D:128:LEU:HD13	1.91	0.52
1:A:382:ALA:HB3	2:B:117:LEU:HD11	1.92	0.52
4:F:79:ILE:HD12	8:J:36:A:OP1	2.09	0.52
4:F:519:ASN:ND2	4:F:530:THR:OG1	2.41	0.52
1:A:853:THR:O	2:D:72:LYS:NZ	2.43	0.52
4:F:31:TYR:HD1	4:F:84:CYS:HB2	1.74	0.52
4:E:142:GLU:HA	4:E:411:LEU:HD11	1.90	0.52
1:A:297:ASN:HD22	1:A:353:VAL:H	1.57	0.52

Continued on next page...

Continued from previous page...

Atom-1	Atom-2	Interatomic distance (Å)	Clash overlap (Å)
1:A:598:TRP:CD2	1:A:830:PRO:HB3	2.44	0.52
1:A:861:SER:HB2	7:I:30:G:H1'	1.88	0.52
3:C:54:SER:O	3:C:57:SER:OG	2.24	0.52
4:E:525:ILE:HG13	4:E:526:LEU:HG	1.91	0.52
1:A:131:LEU:HG	1:A:247:LEU:HD23	1.91	0.52
1:A:606:TYR:CE1	1:A:614:LEU:HD11	2.45	0.52
2:D:62:MET:SD	8:J:35:U:H5'	2.46	0.52
1:A:476:VAL:HG22	1:A:696:ILE:HG22	1.90	0.52
4:F:303:ARG:H	4:F:369:ASP:HB3	1.75	0.52
4:E:185:TYR:HA	4:E:195:ILE:HG13	1.92	0.52
5:G:12:MET:N	5:G:30:ALA:O	2.36	0.52
4:F:379:ALA:HB1	4:F:383:ASP:HB2	1.91	0.51
4:F:409:ARG:O	4:F:409:ARG:NE	2.37	0.51
1:A:861:SER:CB	7:I:30:G:C1'	2.83	0.51
8:J:47:A:H2'	8:J:48:C:C6	2.45	0.51
1:A:86:ILE:HD12	1:A:219:PHE:HB3	1.90	0.51
4:E:418:GLU:HB2	4:E:421:TYR:HD2	1.74	0.51
1:A:238:TYR:O	1:A:242:MET:HG3	2.11	0.51
1:A:601:MET:O	1:A:605:VAL:HG23	2.10	0.51
1:A:707:LEU:O	1:A:724:GLN:NE2	2.44	0.51
2:B:100:ASN:HA	2:B:103:LEU:HB3	1.92	0.51
4:E:280:LEU:HD12	4:E:438:LEU:HD11	1.92	0.51
4:F:325:LEU:HB3	4:F:329:LYS:HD2	1.93	0.51
5:G:94:LEU:O	5:G:99:ARG:NH1	2.44	0.51
1:A:606:TYR:HE1	1:A:614:LEU:HD11	1.76	0.51
4:E:288:LYS:HG3	4:E:399:ILE:HG22	1.92	0.51
1:A:902:MET:HE2	4:F:92:LEU:HD22	1.93	0.51
1:A:335:VAL:HG21	1:A:366:LEU:HD22	1.93	0.50
1:A:416:ASN:HD21	1:A:859:PHE:HZ	1.59	0.50
1:A:468:GLN:HA	1:A:731:LEU:HG	1.93	0.50
1:A:555:ARG:HE	1:A:555:ARG:N	2.10	0.50
1:A:733:ARG:HH22	5:G:2:ASN:ND2	2.07	0.50
4:E:279:THR:HB	4:E:398:TYR:HB2	1.92	0.50
1:A:576:LEU:HD22	1:A:689:TYR:CG	2.47	0.50
4:F:15:ARG:O	4:F:43:LEU:N	2.27	0.50
1:A:420:TYR:OH	3:C:5:ASP:OD1	2.22	0.50
4:F:27:CYS:HB2	4:F:88:GLN:HB2	1.93	0.50
1:A:851:ASP:CG	1:A:854:LEU:HD13	2.32	0.50
1:A:412:PRO:HB3	3:C:14:LEU:HD23	1.92	0.50
1:A:746:TYR:CZ	1:A:750:ARG:HD2	2.47	0.50
4:E:181:VAL:HB	4:E:199:THR:HG22	1.93	0.50

Continued on next page...

Continued from previous page...

Atom-1	Atom-2	Interatomic distance (Å)	Clash overlap (Å)
1:A:462:THR:OG1	1:A:791:ASN:ND2	2.25	0.50
4:E:5:CYS:SG	4:E:7:LEU:N	2.84	0.50
4:E:472:PHE:HZ	4:E:499:PHE:HB2	1.77	0.50
1:A:462:THR:HB	1:A:627:PRO:HB3	1.94	0.50
4:F:326:PRO:HD2	4:F:329:LYS:HE2	1.93	0.50
1:A:434:SER:OG	1:A:876:GLU:OE1	2.20	0.49
8:J:49:C:H2'	8:J:50:G:C8	2.47	0.49
4:E:109:ILE:HD13	4:E:134:ALA:HB2	1.94	0.49
4:E:124:ASN:HD21	4:E:427:ARG:HB2	1.77	0.49
1:A:268:TRP:CD1	1:A:322:PRO:HD3	2.47	0.49
4:F:272:VAL:HA	4:F:275:GLN:HG2	1.95	0.49
5:G:29:LEU:HB2	5:G:45:LEU:HB3	1.94	0.49
2:D:99:ASP:HA	2:D:104:ASN:HD21	1.77	0.49
4:E:239:THR:HG21	4:E:424:SER:HB2	1.94	0.49
1:A:202:VAL:HG13	1:A:231:VAL:HG13	1.94	0.49
1:A:706:ALA:O	1:A:710:THR:OG1	2.22	0.49
1:A:388:LEU:HD23	1:A:397:SER:HB2	1.95	0.49
2:B:173:SER:O	2:B:177:SER:OG	2.28	0.49
4:F:6:VAL:HG22	4:F:129:ARG:HH11	1.77	0.49
7:I:21:U:H2'	7:I:22:G:C8	2.48	0.49
1:A:19:LEU:HD21	1:A:70:PHE:CG	2.48	0.48
4:F:6:VAL:HG13	4:F:129:ARG:HD3	1.95	0.48
4:F:402:PRO:HG3	4:F:430:LYS:HB2	1.95	0.48
1:A:34:ALA:HA	1:A:47:LYS:HA	1.94	0.48
1:A:151:CYS:SG	1:A:178:LEU:HG	2.52	0.48
1:A:861:SER:HB2	7:I:30:G:C1'	2.44	0.48
2:B:43:ASN:HD21	8:J:46:U:C2'	2.25	0.48
1:A:659:CYS:HA	1:A:663:LEU:HB3	1.96	0.48
4:E:287:GLY:HA2	4:E:290:HIS:CE1	2.49	0.48
1:A:43:ALA:HB3	1:A:725:HIS:HA	1.95	0.48
1:A:862:LEU:HD23	7:I:31:C:H5'	1.95	0.48
2:B:129:MET:HG2	2:B:187:THR:HG22	1.95	0.48
1:A:558:ALA:O	1:A:683:GLY:HA3	2.13	0.48
1:A:627:PRO:HD2	1:A:630:LEU:HD12	1.96	0.48
1:A:696:ILE:HG12	1:A:757:ILE:HG13	1.96	0.47
4:E:384:LEU:HD11	4:E:423:ASN:HB3	1.95	0.47
4:E:548:GLN:NE2	4:E:578:ASP:OD1	2.46	0.47
1:A:254:GLU:HA	1:A:259:THR:HG23	1.96	0.47
1:A:615:MET:HB2	1:A:766:PHE:CE1	2.49	0.47
1:A:836:ARG:NH1	1:A:840:ALA:HB2	2.29	0.47
1:A:467:ARG:HB3	1:A:731:LEU:O	2.13	0.47

Continued on next page...

Continued from previous page...

Atom-1	Atom-2	Interatomic distance (Å)	Clash overlap (Å)
1:A:501:SER:HB2	8:J:25:G:H3'	1.96	0.47
1:A:530:TYR:HD2	1:A:536:ILE:HD11	1.79	0.47
2:B:161:ASP:HB2	2:B:181:ALA:HB3	1.97	0.47
1:A:151:CYS:HA	1:A:177:ASN:HD22	1.78	0.47
1:A:59:LYS:HD2	1:A:63:ASP:HA	1.96	0.47
1:A:920:PHE:HZ	8:J:32:C:H4'	1.80	0.47
2:B:15:PHE:HE2	2:B:49:PHE:HD1	1.61	0.47
2:D:182:TRP:O	2:D:184:LEU:N	2.47	0.47
8:J:31:U:H2'	8:J:32:C:H6	1.79	0.47
4:F:77:PRO:HB3	8:J:36:A:O3'	2.14	0.47
4:E:363:LEU:HB3	4:E:390:ARG:HB3	1.97	0.47
5:G:39:ARG:NH2	5:G:57:PRO:O	2.48	0.47
7:I:20:A:H2'	7:I:21:U:C6	2.49	0.47
2:B:132:ILE:HD13	2:B:138:TYR:HA	1.97	0.47
5:G:19:THR:OG1	5:G:20:GLN:NE2	2.48	0.47
8:J:45:C:H2'	8:J:46:U:C6	2.49	0.47
4:E:512:ILE:HG23	4:E:533:VAL:HG11	1.97	0.46
1:A:684:ASP:OD1	1:A:687:THR:OG1	2.19	0.46
4:F:21:ARG:HG3	4:F:136:GLU:HG2	1.96	0.46
5:G:75:PHE:HE1	5:G:88:LEU:HB2	1.81	0.46
1:A:50:LYS:CD	6:M:1:A:H4'	2.45	0.46
1:A:308:LEU:HD13	1:A:636:LEU:HD12	1.97	0.46
1:A:97:ALA:O	1:A:99:HIS:ND1	2.45	0.46
1:A:572:HIS:O	1:A:576:LEU:HG	2.15	0.46
1:A:720:VAL:HG11	1:A:775:LEU:HD13	1.96	0.46
8:J:37:G:H2'	8:J:38:C:C6	2.50	0.46
2:D:158:GLN:HG3	2:D:166:ILE:HD13	1.98	0.46
1:A:785:VAL:HA	1:A:788:TYR:CE2	2.51	0.46
4:E:523:SER:HA	4:E:527:GLY:H	1.81	0.46
5:G:11:GLN:HA	5:G:31:TYR:HA	1.97	0.46
1:A:74:ARG:HB3	1:A:113:HIS:CE1	2.51	0.46
1:A:763:VAL:HG22	1:A:800:TRP:HZ2	1.81	0.46
1:A:131:LEU:HD23	1:A:244:ILE:HG13	1.98	0.45
1:A:164:ASP:OD2	1:A:167:GLU:N	2.37	0.45
1:A:203:GLY:HA3	1:A:222:PHE:CD1	2.50	0.45
4:E:31:TYR:HE1	4:E:84:CYS:HB2	1.80	0.45
1:A:506:PHE:HB3	1:A:515:TYR:CZ	2.51	0.45
1:A:862:LEU:CD2	7:I:31:C:H5'	2.46	0.45
7:I:22:G:HO2'	7:I:23:C:P	2.39	0.45
1:A:308:LEU:HD12	1:A:308:LEU:HA	1.83	0.45
1:A:366:LEU:H	1:A:366:LEU:HD23	1.81	0.45

Continued on next page...

Continued from previous page...

Atom-1	Atom-2	Interatomic distance (Å)	Clash overlap (Å)
4:F:77:PRO:CG	8:J:36:A:C5'	2.94	0.45
4:F:17:GLY:H	4:F:42:VAL:HA	1.80	0.45
4:E:444:CYS:HB2	4:E:449:VAL:HG23	1.98	0.45
1:A:726:ARG:NH1	1:A:744:GLU:OE1	2.50	0.45
4:F:378:MET:HG2	4:F:405:LEU:HD13	1.99	0.45
1:A:422:PHE:O	1:A:426:LYS:HG2	2.16	0.45
1:A:469:LEU:O	1:A:473:VAL:HG23	2.16	0.45
3:C:28:LEU:HD12	2:D:119:ILE:HD11	1.98	0.45
4:F:119:ASP:N	4:F:119:ASP:OD1	2.48	0.45
3:C:49:PHE:HE1	2:D:98:LEU:HD13	1.82	0.45
1:A:530:TYR:CD2	1:A:536:ILE:HD11	2.52	0.45
2:D:135:TYR:CE2	2:D:174:MET:HG2	2.52	0.45
1:A:358:ASP:N	1:A:534:ASN:HD21	2.15	0.45
1:A:903:TYR:HB2	1:A:905:VAL:O	2.17	0.45
4:F:268:ASN:O	4:F:272:VAL:HG23	2.17	0.45
1:A:865:ASP:OD2	7:I:31:C:O4'	2.35	0.44
3:C:5:ASP:O	3:C:9:THR:HG23	2.17	0.44
4:F:293:ILE:HD13	4:F:324:TYR:CD2	2.52	0.44
1:A:297:ASN:ND2	1:A:353:VAL:H	2.15	0.44
1:A:127:LEU:HD13	1:A:145:ILE:HG21	1.98	0.44
1:A:459:ASN:HB2	1:A:624:ARG:O	2.17	0.44
4:F:405:LEU:HD23	4:F:406:PRO:HD2	1.98	0.44
4:F:475:PHE:HD2	4:F:475:PHE:HA	1.70	0.44
4:F:32:ASP:HB3	4:F:103:VAL:HG21	2.00	0.44
2:D:69:GLN:HE21	2:D:69:GLN:HB3	1.66	0.44
4:F:325:LEU:HD13	4:F:329:LYS:HD2	2.00	0.44
7:I:21:U:H2'	7:I:22:G:H8	1.82	0.44
4:F:155:ARG:NH2	4:E:301:SER:O	2.50	0.44
1:A:496:ASN:OD1	8:J:29:G:OP2	2.36	0.44
1:A:575:LEU:HD13	1:A:641:LYS:HG3	2.00	0.44
4:E:412:LEU:HD21	4:E:416:THR:HA	1.98	0.44
1:A:497:ASN:HB3	1:A:500:LYS:HG2	1.99	0.44
1:A:666:MET:HB3	1:A:673:LEU:HD22	2.00	0.44
4:E:492:GLN:HA	4:E:495:VAL:HG12	1.98	0.44
4:E:543:TYR:HD1	4:E:571:GLY:HA3	1.83	0.44
3:C:70:LYS:HE3	2:D:88:GLN:NE2	2.32	0.43
1:A:544:LEU:HD23	1:A:556:THR:HG22	2.00	0.43
2:B:70:MET:HB3	4:E:92:LEU:HD21	2.00	0.43
4:E:119:ASP:OD1	4:E:119:ASP:N	2.50	0.43
1:A:837:ILE:HG21	1:A:866:ALA:HB2	2.01	0.43
4:F:562:ASN:HA	4:F:565:ILE:HB	2.00	0.43

Continued on next page...

Continued from previous page...

Atom-1	Atom-2	Interatomic distance (Å)	Clash overlap (Å)
7:I:11:G:H2'	7:I:12:G:H4'	1.99	0.43
4:E:509:ALA:HB3	4:E:545:ILE:HG12	2.01	0.43
7:I:12:G:H2'	7:I:13:U:C6	2.54	0.43
7:I:29:A:H2'	7:I:30:G:C8	2.53	0.43
2:B:18:ALA:HB1	2:B:42:LEU:HB2	1.99	0.43
4:F:241:VAL:O	4:F:277:TYR:OH	2.31	0.43
4:F:271:LYS:O	4:F:275:GLN:N	2.42	0.43
4:F:276:LYS:NZ	4:F:396:TYR:H	2.16	0.43
4:F:511:PHE:HE1	4:F:513:SER:HB2	1.82	0.43
4:E:154:VAL:HG22	4:E:165:LEU:HD13	2.00	0.43
1:A:196:MET:HB3	1:A:196:MET:HE2	1.91	0.43
1:A:847:ILE:HG12	2:D:83:VAL:HG23	1.99	0.43
1:A:251:LEU:HD22	1:A:316:LEU:HG	1.99	0.43
2:B:192:ASN:OD1	2:B:192:ASN:N	2.52	0.43
4:E:40:LYS:HB3	4:E:59:ASP:HA	2.01	0.43
1:A:188:LYS:HD2	1:A:214:GLY:HA3	2.00	0.43
1:A:204:VAL:HG21	1:A:733:ARG:NH2	2.34	0.43
1:A:417:LYS:HG3	2:D:90:MET:HG3	2.00	0.43
4:F:17:GLY:HA3	4:F:41:LEU:HG	2.01	0.43
1:A:605:VAL:HG22	1:A:756:MET:HB2	2.01	0.42
1:A:708:LEU:HD11	1:A:731:LEU:HD22	2.00	0.42
2:D:62:MET:HG3	4:F:79:ILE:HG21	2.00	0.42
4:F:15:ARG:HB3	4:F:22:ARG:HB3	2.01	0.42
2:B:39:LYS:O	2:B:43:ASN:HB2	2.19	0.42
4:F:132:LEU:HD21	4:F:238:PRO:HA	2.00	0.42
4:F:346:PHE:HD1	4:F:346:PHE:HA	1.72	0.42
4:E:502:ARG:HE	4:E:502:ARG:HA	1.84	0.42
1:A:851:ASP:OD1	2:D:79:LYS:HE3	2.20	0.42
1:A:176:ALA:HA	1:A:248:THR:O	2.19	0.42
4:F:311:HIS:HA	4:F:314:VAL:HG12	2.02	0.42
1:A:312:ASN:ND2	1:A:464:CYS:O	2.48	0.42
1:A:615:MET:HB2	1:A:766:PHE:HE1	1.85	0.42
1:A:658:GLU:O	1:A:662:VAL:HG22	2.19	0.42
1:A:729:GLU:HA	1:A:733:ARG:HB2	2.02	0.42
1:A:763:VAL:HG22	1:A:800:TRP:CZ2	2.55	0.42
5:G:27:ASN:OD1	5:G:27:ASN:N	2.53	0.42
1:A:441:PHE:CE1	1:A:548:ILE:HB	2.54	0.42
2:B:75:ARG:HD2	2:B:75:ARG:HA	1.80	0.42
3:C:14:LEU:HD22	3:C:36:HIS:CG	2.55	0.42
4:F:67:GLY:HA3	8:J:35:U:HO2'	1.82	0.42
1:A:813:CYS:HA	7:I:33:G:C5'	2.48	0.42

Continued on next page...

Continued from previous page...

Atom-1	Atom-2	Interatomic distance (Å)	Clash overlap (Å)
2:B:168:GLN:N	2:B:171:GLU:OE1	2.49	0.42
4:E:401:ASP:OD1	4:E:401:ASP:N	2.52	0.42
4:E:447:GLU:HB3	4:E:467:LYS:HD3	2.01	0.42
1:A:437:LEU:HD13	1:A:843:PHE:HE2	1.85	0.42
4:E:174:PRO:HA	4:E:175:PRO:HD3	1.94	0.42
1:A:340:PHE:HE1	2:B:95:LEU:HD22	1.84	0.41
2:D:62:MET:CE	8:J:35:U:P	3.05	0.41
2:D:114:CYS:HA	2:D:131:VAL:O	2.20	0.41
1:A:840:ALA:HB1	7:I:31:C:OP1	2.20	0.41
3:C:12:VAL:O	3:C:16:VAL:HG13	2.20	0.41
5:G:9:LEU:HD12	5:G:33:ASN:HA	2.01	0.41
4:E:25:LEU:HD21	4:E:106:PHE:CZ	2.54	0.41
1:A:271:LEU:HD23	2:B:119:ILE:HD12	2.02	0.41
1:A:437:LEU:HD13	1:A:843:PHE:CE2	2.55	0.41
1:A:502:ALA:O	1:A:506:PHE:HB2	2.20	0.41
1:A:906:MET:SD	1:A:906:MET:N	2.93	0.41
4:F:383:ASP:OD1	4:F:383:ASP:N	2.51	0.41
1:A:50:LYS:HE3	6:M:1:A:H4'	2.03	0.41
1:A:733:ARG:HA	1:A:733:ARG:HD3	1.71	0.41
1:A:800:TRP:CG	1:A:810:HIS:HB3	2.55	0.41
4:E:296:ALA:HB1	4:E:355:TYR:HE2	1.85	0.41
1:A:83:GLU:HA	1:A:86:ILE:HG22	2.03	0.41
1:A:614:LEU:HB3	1:A:800:TRP:HZ3	1.84	0.41
1:A:887:TYR:CZ	1:A:891:LEU:HD21	2.56	0.41
4:F:31:TYR:CD1	4:F:84:CYS:HB2	2.53	0.41
4:F:155:ARG:NH2	4:E:302:ALA:HA	2.36	0.41
5:G:103:LEU:HD13	5:G:103:LEU:HA	1.86	0.41
1:A:164:ASP:OD1	1:A:793:PHE:HB3	2.21	0.41
4:F:243:GLN:HB3	4:F:277:TYR:CE1	2.54	0.41
4:F:309:CYS:HA	4:F:360:VAL:HG12	2.01	0.41
7:I:24:U:H2'	7:I:25:A:C8	2.56	0.41
1:A:396:PHE:HB3	1:A:675:VAL:HB	2.03	0.41
1:A:545:LYS:HB3	1:A:555:ARG:HB2	2.03	0.41
1:A:705:ASN:O	1:A:709:SER:OG	2.28	0.41
1:A:876:GLU:HA	1:A:879:ASP:HB2	2.03	0.41
1:A:903:TYR:HA	4:F:95:ASN:HB2	2.02	0.41
2:D:67:MET:HG3	4:F:90:PHE:CZ	2.56	0.41
4:F:19:CYS:SG	4:F:39:HIS:CE1	3.14	0.41
4:F:183:THR:O	4:F:228:THR:OG1	2.38	0.41
4:E:171:LYS:HA	4:E:172:PRO:HD3	1.95	0.41
4:E:505:ALA:O	4:E:508:LYS:NZ	2.48	0.41

Continued on next page...

Continued from previous page...

Atom-1	Atom-2	Interatomic distance (Å)	Clash overlap (Å)
4:E:546:PHE:H	4:E:573:LEU:HD12	1.86	0.41
1:A:73:LYS:HZ2	1:A:114:ILE:HD12	1.86	0.41
1:A:390:ASP:OD2	1:A:674:TYR:OH	2.23	0.41
3:C:9:THR:HA	3:C:12:VAL:HG22	2.01	0.41
4:F:490:ARG:N	4:F:491:PRO:HD2	2.35	0.41
1:A:46:ALA:HA	1:A:129:TYR:HE2	1.86	0.40
1:A:312:ASN:HD22	1:A:466:ILE:HB	1.85	0.40
1:A:588:VAL:HG11	1:A:756:MET:HG3	2.01	0.40
4:E:135:ALA:O	4:E:139:LYS:HG2	2.21	0.40
7:I:24:U:H2'	7:I:25:A:H8	1.86	0.40
1:A:309:HIS:HA	1:A:466:ILE:HG12	2.04	0.40
1:A:366:LEU:HG	1:A:371:LEU:HG	2.02	0.40
1:A:847:ILE:O	1:A:850:THR:HB	2.21	0.40
1:A:898:HIS:ND1	2:D:71:TYR:OH	2.43	0.40
4:F:380:THR:OG1	4:F:381:ASN:OD1	2.39	0.40
1:A:555:ARG:HE	1:A:555:ARG:H	1.68	0.40
1:A:767:ASN:HB3	1:A:770:TYR:HB2	2.02	0.40
4:F:412:LEU:HD23	4:F:412:LEU:HA	1.94	0.40
7:I:22:G:O2'	7:I:23:C:OP1	2.30	0.40
1:A:42:VAL:HG13	1:A:712:GLY:HA3	2.03	0.40
1:A:676:LYS:HE3	1:A:681:SER:HB2	2.02	0.40
4:E:238:PRO:O	4:E:388:ASN:ND2	2.40	0.40
5:G:81:LYS:HE2	5:G:81:LYS:HB2	1.81	0.40
1:A:813:CYS:HA	7:I:33:G:H5''	2.03	0.40
1:A:836:ARG:HH12	1:A:840:ALA:HB2	1.87	0.40

There are no symmetry-related clashes.

5.3 Torsion angles [i](#)

5.3.1 Protein backbone [i](#)

In the following table, the Percentiles column shows the percent Ramachandran outliers of the chain as a percentile score with respect to all PDB entries followed by that with respect to all EM entries.

The Analysed column shows the number of residues for which the backbone conformation was analysed, and the total number of residues.

Mol	Chain	Analysed	Favoured	Allowed	Outliers	Percentiles
1	A	924/932 (99%)	875 (95%)	47 (5%)	2 (0%)	47 69

Continued on next page...

Continued from previous page...

Mol	Chain	Analysed	Favoured	Allowed	Outliers	Percentiles	
2	B	185/198 (93%)	178 (96%)	6 (3%)	1 (0%)	29	47
2	D	184/198 (93%)	180 (98%)	4 (2%)	0	100	100
3	C	70/83 (84%)	70 (100%)	0	0	100	100
4	E	581/601 (97%)	543 (94%)	38 (6%)	0	100	100
4	F	580/601 (96%)	558 (96%)	22 (4%)	0	100	100
5	G	111/117 (95%)	104 (94%)	6 (5%)	1 (1%)	17	31
All	All	2635/2730 (96%)	2508 (95%)	123 (5%)	4 (0%)	50	69

All (4) Ramachandran outliers are listed below:

Mol	Chain	Res	Type
1	A	218	ASP
1	A	40	ASP
5	G	7	VAL
2	B	182	TRP

5.3.2 Protein sidechains [i](#)

In the following table, the Percentiles column shows the percent sidechain outliers of the chain as a percentile score with respect to all PDB entries followed by that with respect to all EM entries.

The Analysed column shows the number of residues for which the sidechain conformation was analysed, and the total number of residues.

Mol	Chain	Analysed	Rotameric	Outliers	Percentiles	
1	A	818/823 (99%)	778 (95%)	40 (5%)	25	43
2	B	146/167 (87%)	136 (93%)	10 (7%)	16	28
2	D	150/167 (90%)	142 (95%)	8 (5%)	22	38
3	C	67/77 (87%)	64 (96%)	3 (4%)	27	46
4	E	498/523 (95%)	471 (95%)	27 (5%)	22	38
4	F	498/523 (95%)	469 (94%)	29 (6%)	20	35
5	G	94/97 (97%)	81 (86%)	13 (14%)	3	5
All	All	2271/2377 (96%)	2141 (94%)	130 (6%)	24	36

All (130) residues with a non-rotameric sidechain are listed below:

Mol	Chain	Res	Type
1	A	10	ARG
1	A	40	ASP
1	A	53	CYS
1	A	86	ILE
1	A	98	LYS
1	A	118	ARG
1	A	131	LEU
1	A	136	GLU
1	A	194	ASP
1	A	231	VAL
1	A	241	LEU
1	A	259	THR
1	A	270	LEU
1	A	293	THR
1	A	308	LEU
1	A	340	PHE
1	A	359	VAL
1	A	366	LEU
1	A	371	LEU
1	A	391	LYS
1	A	553	ARG
1	A	555	ARG
1	A	603	LYS
1	A	613	HIS
1	A	614	LEU
1	A	648	LEU
1	A	666	MET
1	A	680	THR
1	A	693	VAL
1	A	698	GLN
1	A	707	LEU
1	A	758	LEU
1	A	760	ASP
1	A	776	VAL
1	A	786	LEU
1	A	820	VAL
1	A	849	LYS
1	A	870	THR
1	A	901	ASP
1	A	906	MET
2	B	42	LEU
2	B	49	PHE
2	B	83	VAL

Continued on next page...

Continued from previous page...

Mol	Chain	Res	Type
2	B	95	LEU
2	B	122	LEU
2	B	148	THR
2	B	155	GLU
2	B	157	GLN
2	B	172	ILE
2	B	186	VAL
3	C	43	LYS
3	C	49	PHE
3	C	68	ILE
2	D	69	GLN
2	D	130	VAL
2	D	137	THR
2	D	172	ILE
2	D	176	ASN
2	D	180	LEU
2	D	182	TRP
2	D	189	LEU
4	F	24	PHE
4	F	29	CYS
4	F	37	THR
4	F	42	VAL
4	F	60	VAL
4	F	119	ASP
4	F	129	ARG
4	F	130	LEU
4	F	193	VAL
4	F	227	LEU
4	F	262	PHE
4	F	276	LYS
4	F	299	TYR
4	F	324	TYR
4	F	329	LYS
4	F	346	PHE
4	F	372	VAL
4	F	381	ASN
4	F	396	TYR
4	F	409	ARG
4	F	432	ILE
4	F	437	PHE
4	F	467	LYS
4	F	475	PHE

Continued on next page...

Continued from previous page...

Mol	Chain	Res	Type
4	F	484	VAL
4	F	510	VAL
4	F	561	PHE
4	F	563	VAL
4	F	576	MET
4	E	5	CYS
4	E	19	CYS
4	E	41	LEU
4	E	60	VAL
4	E	62	GLN
4	E	65	LEU
4	E	181	VAL
4	E	192	LYS
4	E	252	LEU
4	E	262	PHE
4	E	279	THR
4	E	280	LEU
4	E	319	GLU
4	E	363	LEU
4	E	366	THR
4	E	373	PHE
4	E	380	THR
4	E	383	ASP
4	E	391	LEU
4	E	475	PHE
4	E	499	PHE
4	E	502	ARG
4	E	506	TRP
4	E	528	LEU
4	E	549	THR
4	E	560	ARG
4	E	587	PHE
5	G	2	ASN
5	G	10	ARG
5	G	11	GLN
5	G	18	THR
5	G	19	THR
5	G	21	THR
5	G	40	PHE
5	G	53	TRP
5	G	56	PHE
5	G	64	THR

Continued on next page...

Continued from previous page...

Mol	Chain	Res	Type
5	G	78	ASP
5	G	86	LYS
5	G	103	LEU

Sometimes sidechains can be flipped to improve hydrogen bonding and reduce clashes. All (54) such sidechains are listed below:

Mol	Chain	Res	Type
1	A	39	ASN
1	A	75	HIS
1	A	113	HIS
1	A	177	ASN
1	A	191	GLN
1	A	297	ASN
1	A	492	GLN
1	A	524	GLN
1	A	534	ASN
1	A	650	HIS
1	A	657	ASN
1	A	773	GLN
1	A	789	GLN
1	A	886	GLN
2	B	43	ASN
2	B	69	GLN
2	B	73	GLN
2	B	100	ASN
2	B	108	ASN
2	B	109	ASN
3	C	31	GLN
3	C	34	GLN
3	C	63	GLN
2	D	56	GLN
2	D	69	GLN
2	D	88	GLN
2	D	100	ASN
2	D	104	ASN
2	D	157	GLN
2	D	158	GLN
2	D	179	ASN
4	F	11	GLN
4	F	51	ASN
4	F	62	GLN
4	F	88	GLN

Continued on next page...

Continued from previous page...

Mol	Chain	Res	Type
4	F	275	GLN
4	F	281	GLN
4	F	388	ASN
4	F	519	ASN
4	F	531	GLN
4	F	548	GLN
4	F	554	HIS
4	E	62	GLN
4	E	88	GLN
4	E	107	ASN
4	E	124	ASN
4	E	354	GLN
4	E	470	GLN
4	E	518	GLN
4	E	548	GLN
4	E	562	ASN
5	G	2	ASN
5	G	11	GLN
5	G	20	GLN

5.3.3 RNA [i](#)

Mol	Chain	Analysed	Backbone Outliers	Pucker Outliers
6	M	1/2 (50%)	1 (100%)	0
7	I	25/25 (100%)	9 (36%)	3 (12%)
8	J	26/33 (78%)	5 (19%)	0
All	All	52/60 (86%)	15 (28%)	3 (5%)

All (15) RNA backbone outliers are listed below:

Mol	Chain	Res	Type
6	M	2	U
7	I	10	C
7	I	12	G
7	I	13	U
7	I	14	A
7	I	15	G
7	I	16	U
7	I	17	A
7	I	18	G
7	I	23	C

Continued on next page...

Continued from previous page...

Mol	Chain	Res	Type
8	J	39	A
8	J	40	U
8	J	45	C
8	J	48	C
8	J	49	C

All (3) RNA pucker outliers are listed below:

Mol	Chain	Res	Type
7	I	9	G
7	I	17	A
7	I	22	G

5.4 Non-standard residues in protein, DNA, RNA chains [i](#)

There are no non-standard protein/DNA/RNA residues in this entry.

5.5 Carbohydrates [i](#)

There are no monosaccharides in this entry.

5.6 Ligand geometry [i](#)

Of 10 ligands modelled in this entry, 10 are monoatomic - leaving 0 for Mogul analysis.

There are no bond length outliers.

There are no bond angle outliers.

There are no chirality outliers.

There are no torsion outliers.

There are no ring outliers.

No monomer is involved in short contacts.

5.7 Other polymers [i](#)

There are no such residues in this entry.

5.8 Polymer linkage issues

The following chains have linkage breaks:

Mol	Chain	Number of breaks
5	G	1

All chain breaks are listed below:

Model	Chain	Residue-1	Atom-1	Residue-2	Atom-2	Distance (Å)
1	G	1:ASN	C	2:ASN	N	1.75

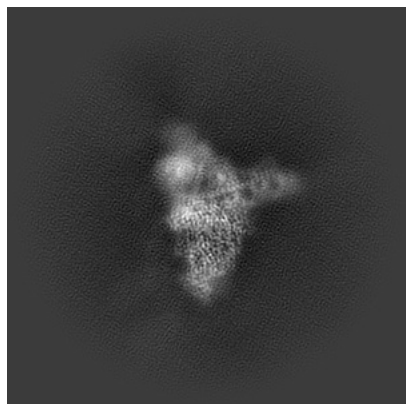
6 Map visualisation [i](#)

This section contains visualisations of the EMDB entry EMD-34308. These allow visual inspection of the internal detail of the map and identification of artifacts.

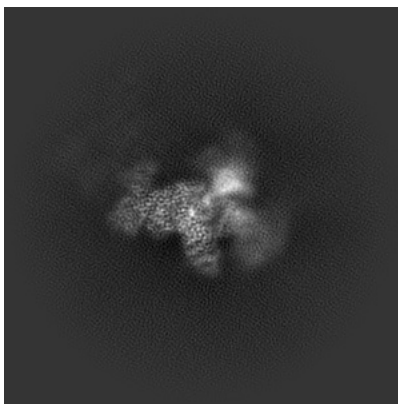
Images derived from a raw map, generated by summing the deposited half-maps, are presented below the corresponding image components of the primary map to allow further visual inspection and comparison with those of the primary map.

6.1 Orthogonal projections [i](#)

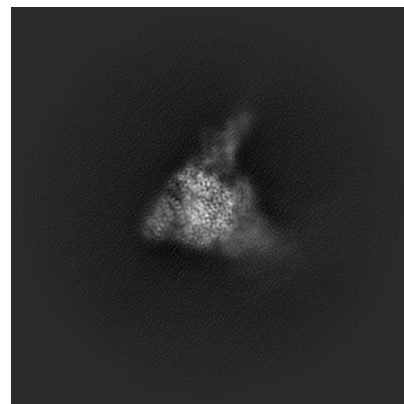
6.1.1 Primary map



X

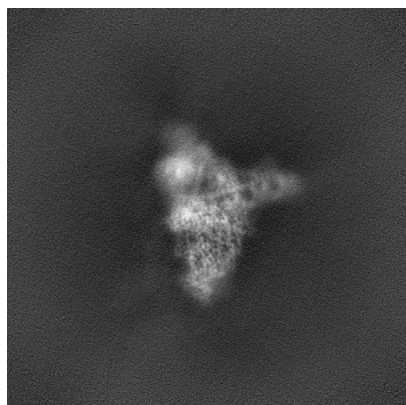


Y

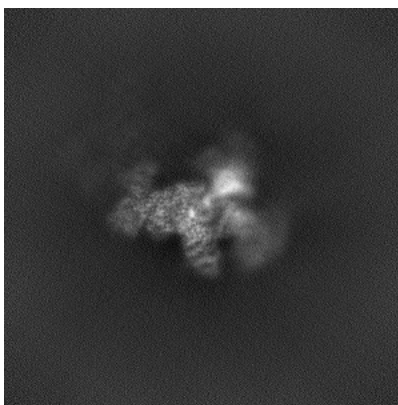


Z

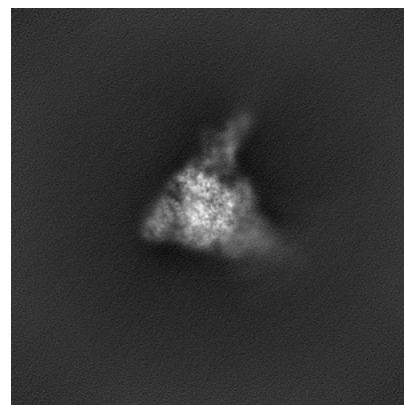
6.1.2 Raw map



X



Y

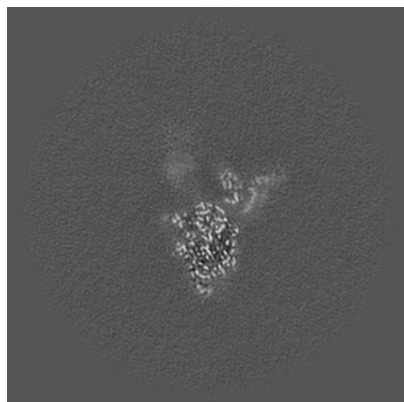


Z

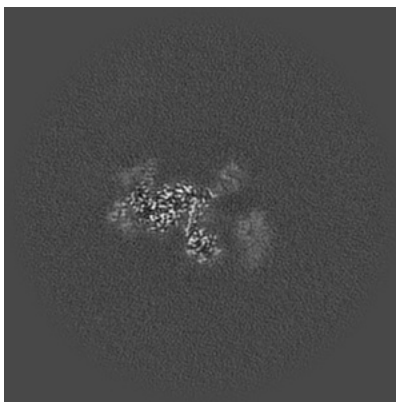
The images above show the map projected in three orthogonal directions.

6.2 Central slices [i](#)

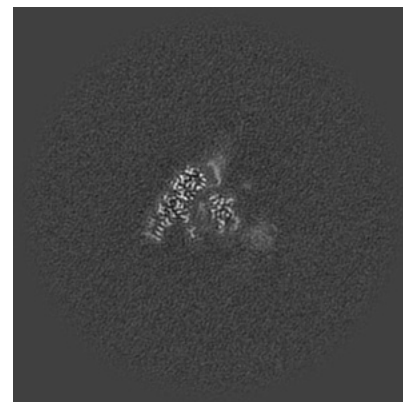
6.2.1 Primary map



X Index: 224

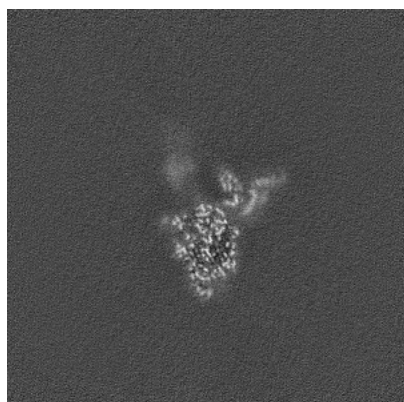


Y Index: 224

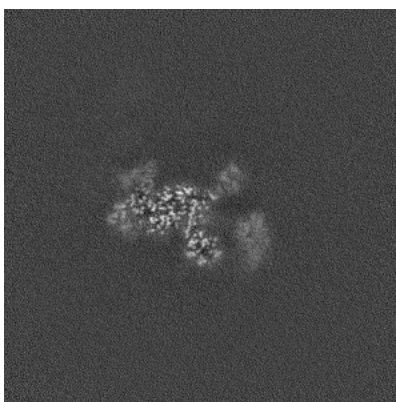


Z Index: 224

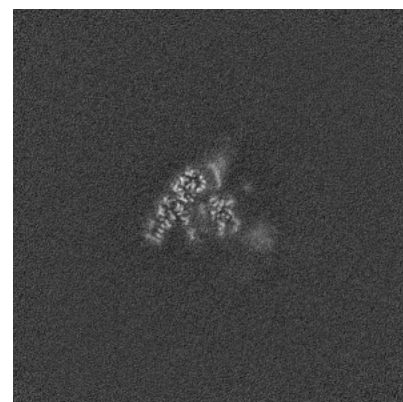
6.2.2 Raw map



X Index: 224



Y Index: 224

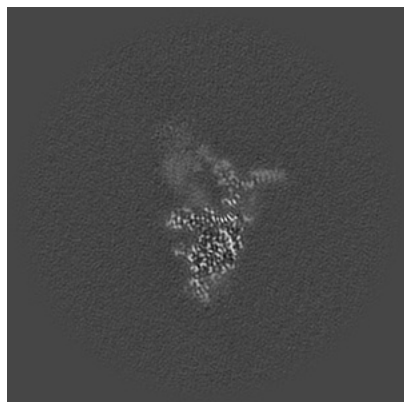


Z Index: 224

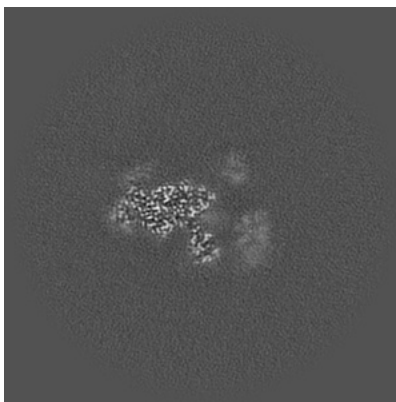
The images above show central slices of the map in three orthogonal directions.

6.3 Largest variance slices [i](#)

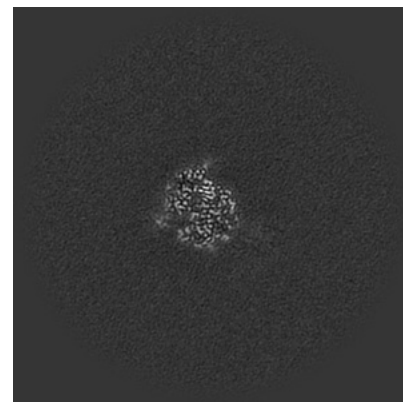
6.3.1 Primary map



X Index: 216

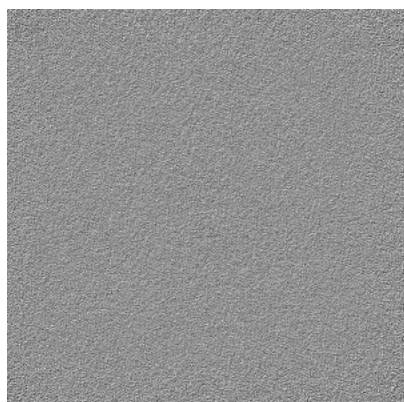


Y Index: 219

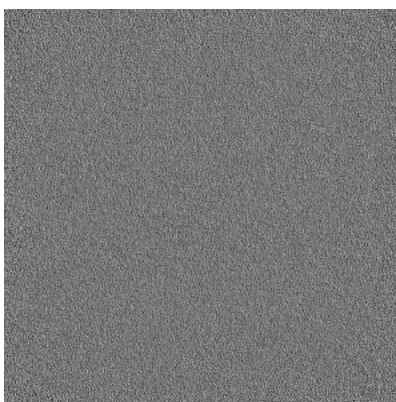


Z Index: 209

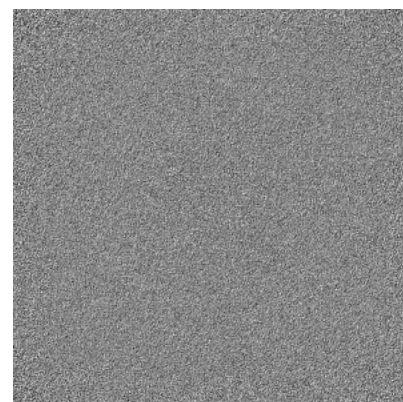
6.3.2 Raw map



X Index: 0



Y Index: 0

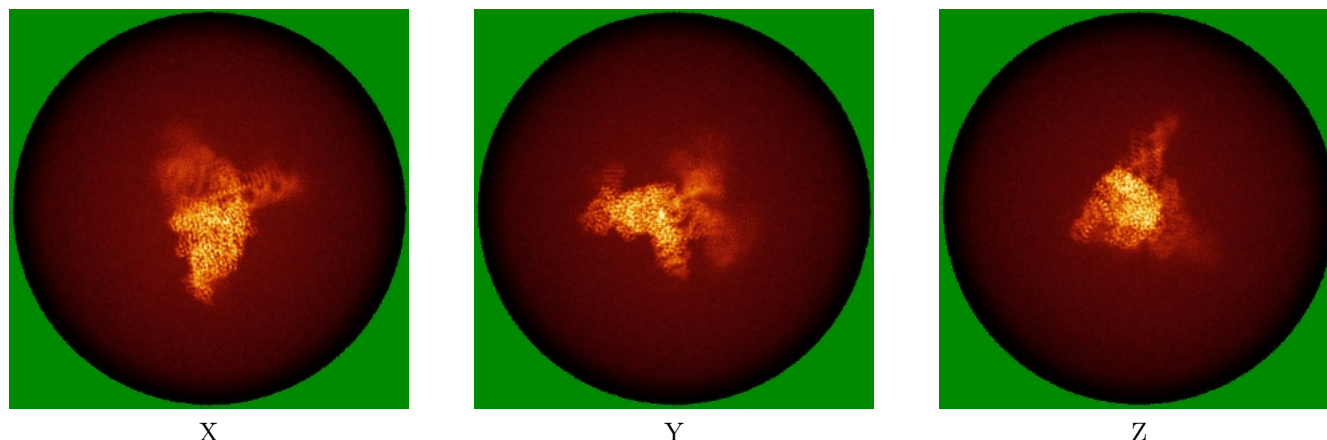


Z Index: 0

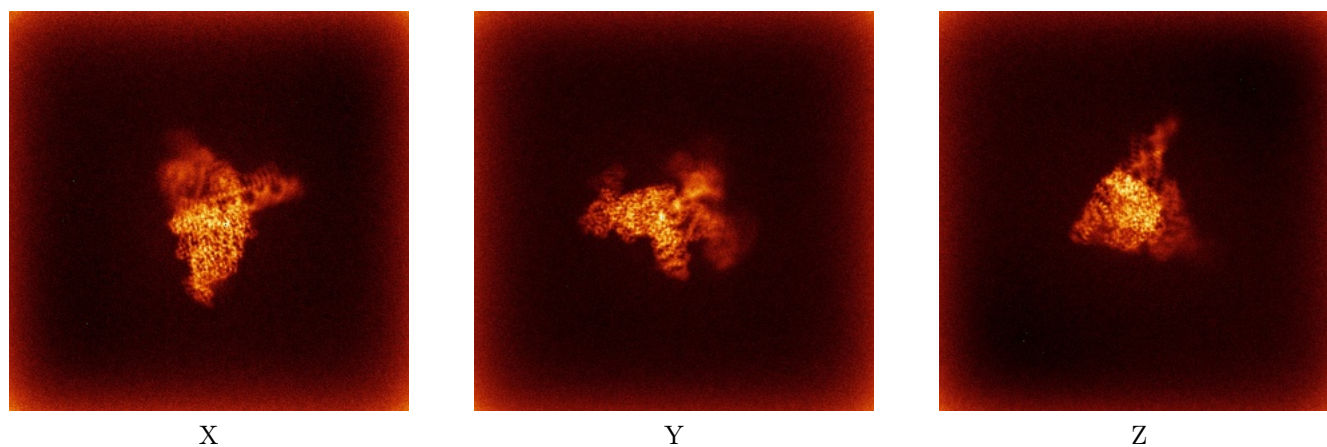
The images above show the largest variance slices of the map in three orthogonal directions.

6.4 Orthogonal standard-deviation projections (False-color) [i](#)

6.4.1 Primary map



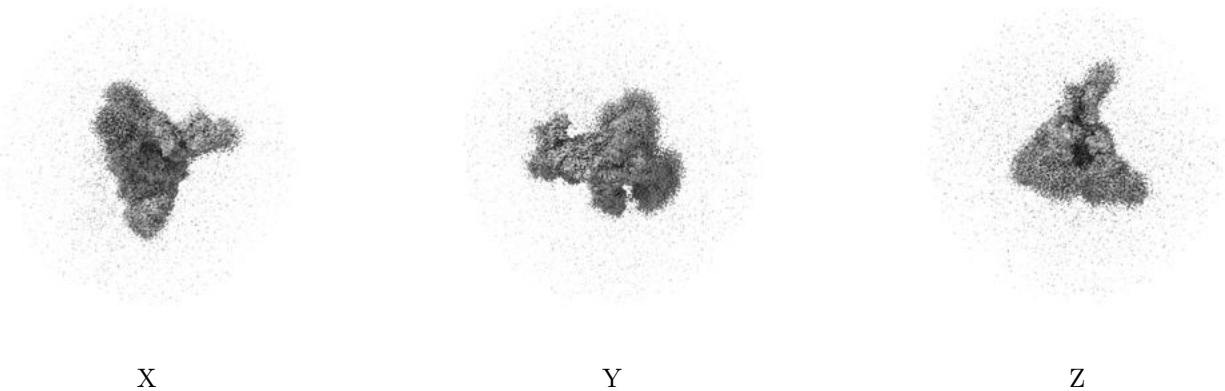
6.4.2 Raw map



The images above show the map standard deviation projections with false color in three orthogonal directions. Minimum values are shown in green, max in blue, and dark to light orange shades represent small to large values respectively.

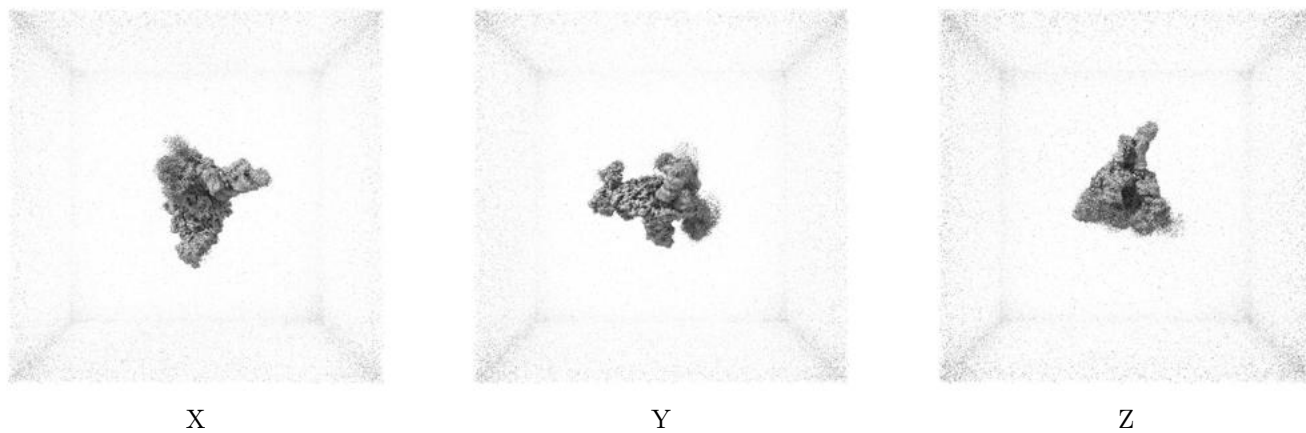
6.5 Orthogonal surface views [i](#)

6.5.1 Primary map



The images above show the 3D surface view of the map at the recommended contour level 0.2. These images, in conjunction with the slice images, may facilitate assessment of whether an appropriate contour level has been provided.

6.5.2 Raw map



These images show the 3D surface of the raw map. The raw map's contour level was selected so that its surface encloses the same volume as the primary map does at its recommended contour level.

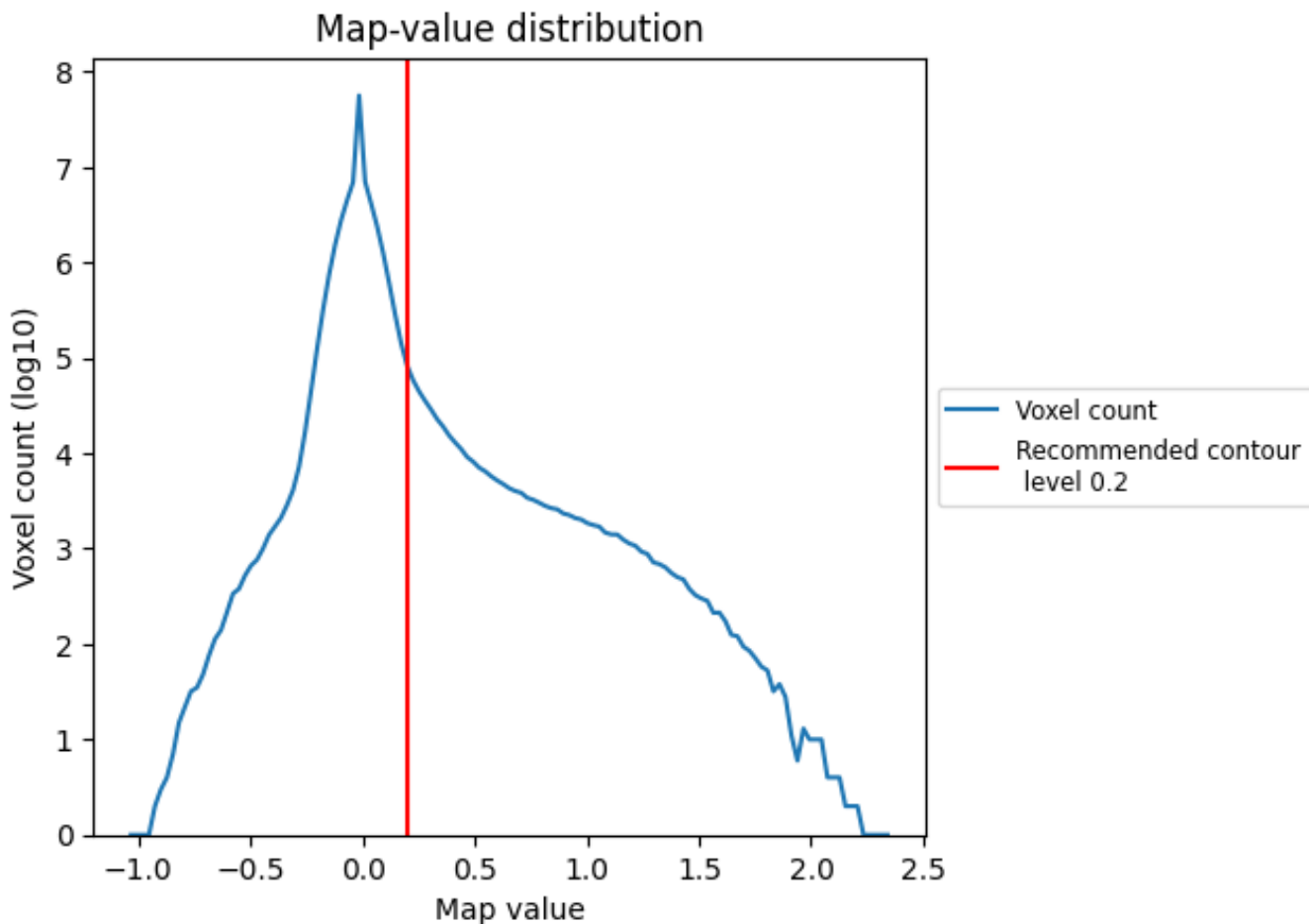
6.6 Mask visualisation [i](#)

This section was not generated. No masks/segmentation were deposited.

7 Map analysis [i](#)

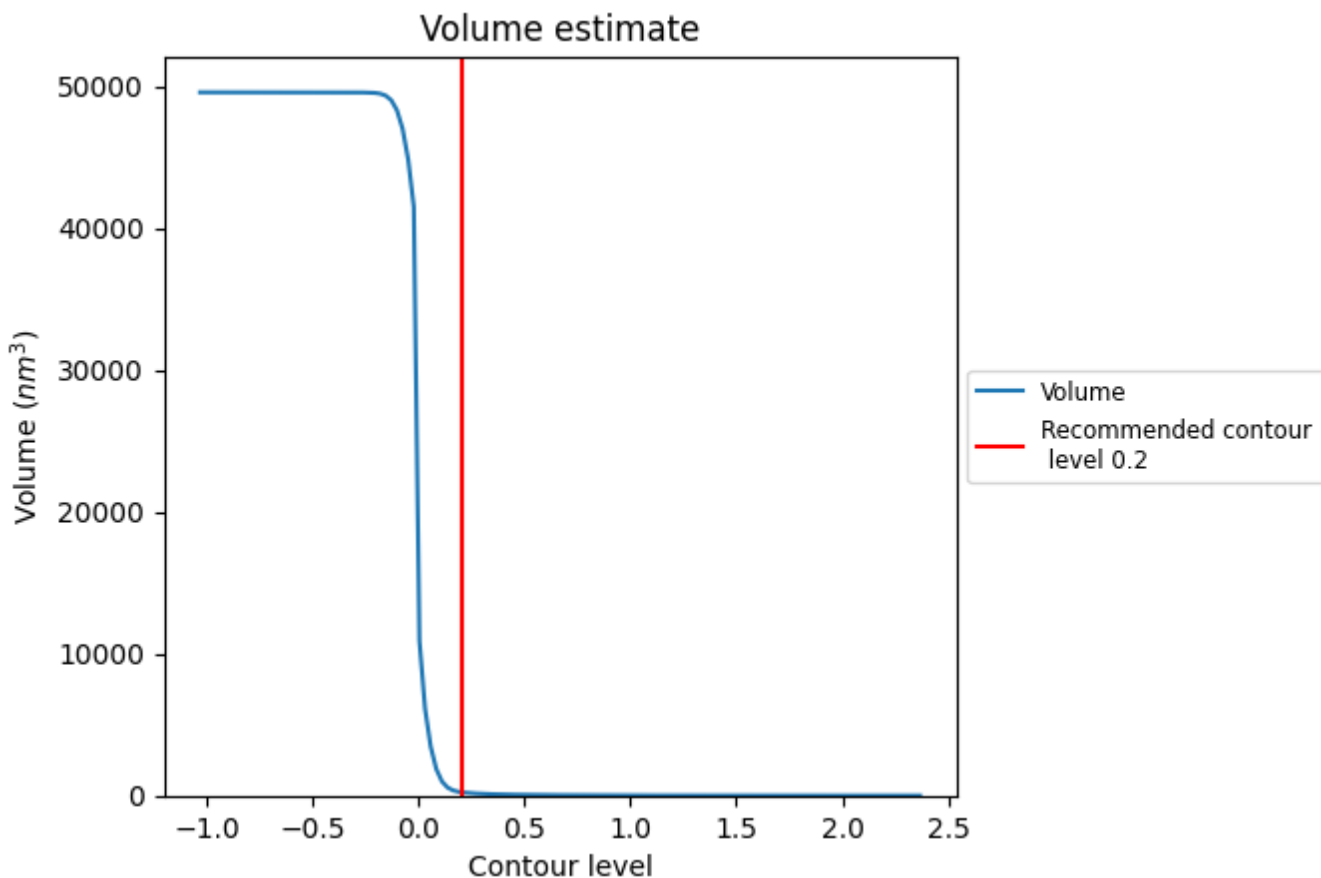
This section contains the results of statistical analysis of the map.

7.1 Map-value distribution [i](#)



The map-value distribution is plotted in 128 intervals along the x-axis. The y-axis is logarithmic. A spike in this graph at zero usually indicates that the volume has been masked.

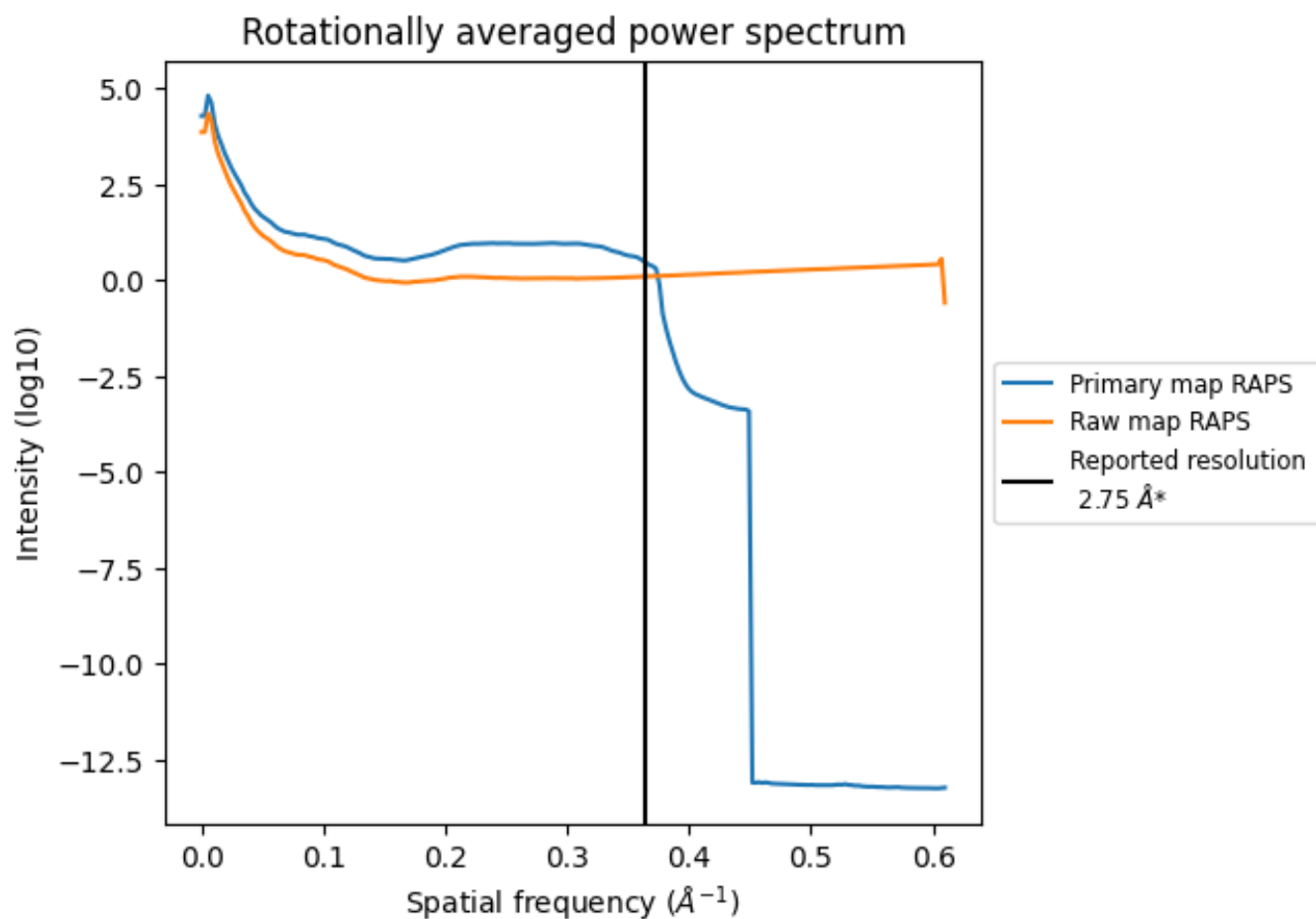
7.2 Volume estimate [i](#)



The volume at the recommended contour level is 242 nm³; this corresponds to an approximate mass of 218 kDa.

The volume estimate graph shows how the enclosed volume varies with the contour level. The recommended contour level is shown as a vertical line and the intersection between the line and the curve gives the volume of the enclosed surface at the given level.

7.3 Rotationally averaged power spectrum [i](#)

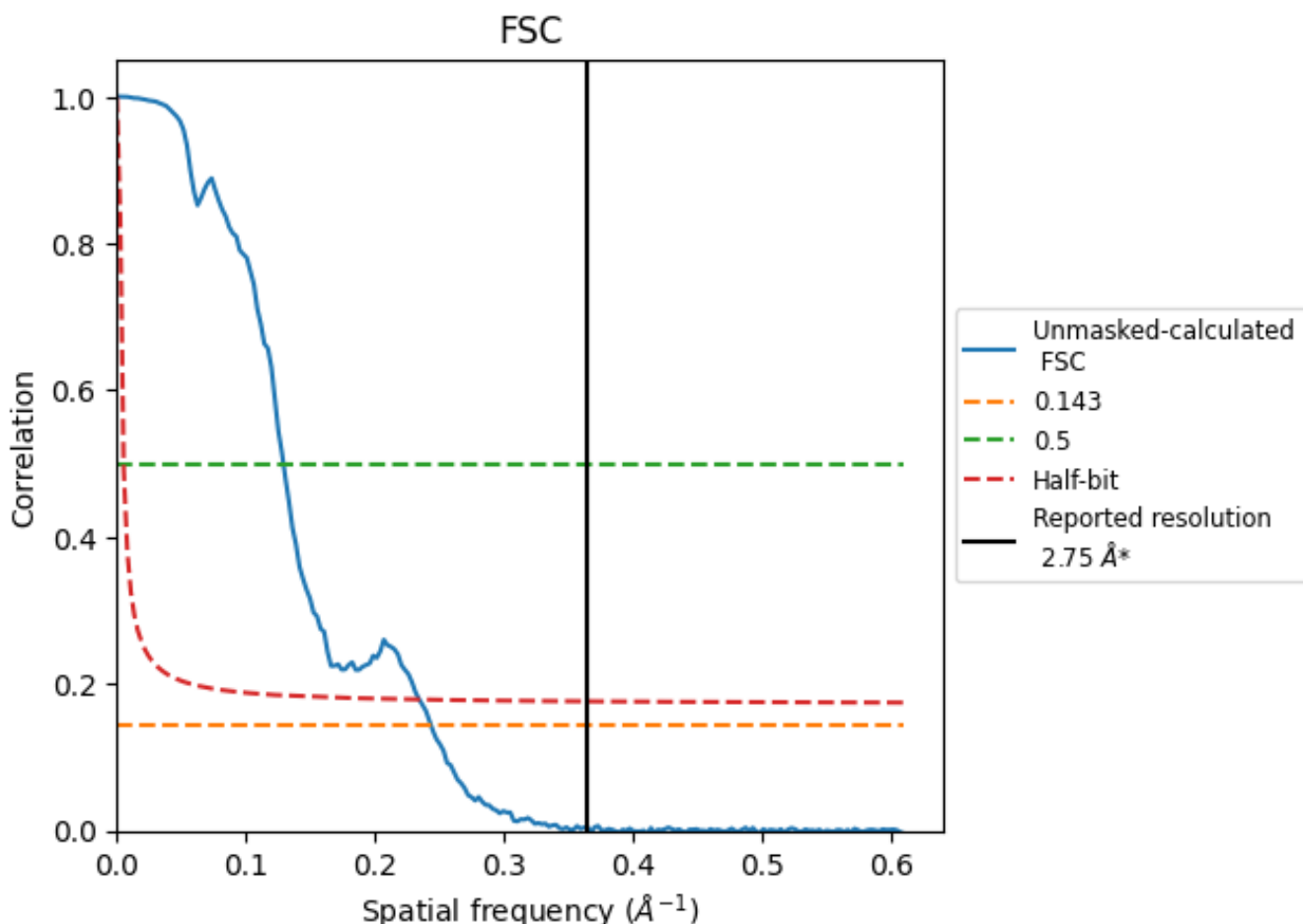


*Reported resolution corresponds to spatial frequency of 0.364 Å⁻¹

8 Fourier-Shell correlation [i](#)

Fourier-Shell Correlation (FSC) is the most commonly used method to estimate the resolution of single-particle and subtomogram-averaged maps. The shape of the curve depends on the imposed symmetry, mask and whether or not the two 3D reconstructions used were processed from a common reference. The reported resolution is shown as a black line. A curve is displayed for the half-bit criterion in addition to lines showing the 0.143 gold standard cut-off and 0.5 cut-off.

8.1 FSC [i](#)



*Reported resolution corresponds to spatial frequency of 0.364 Å⁻¹

8.2 Resolution estimates [i](#)

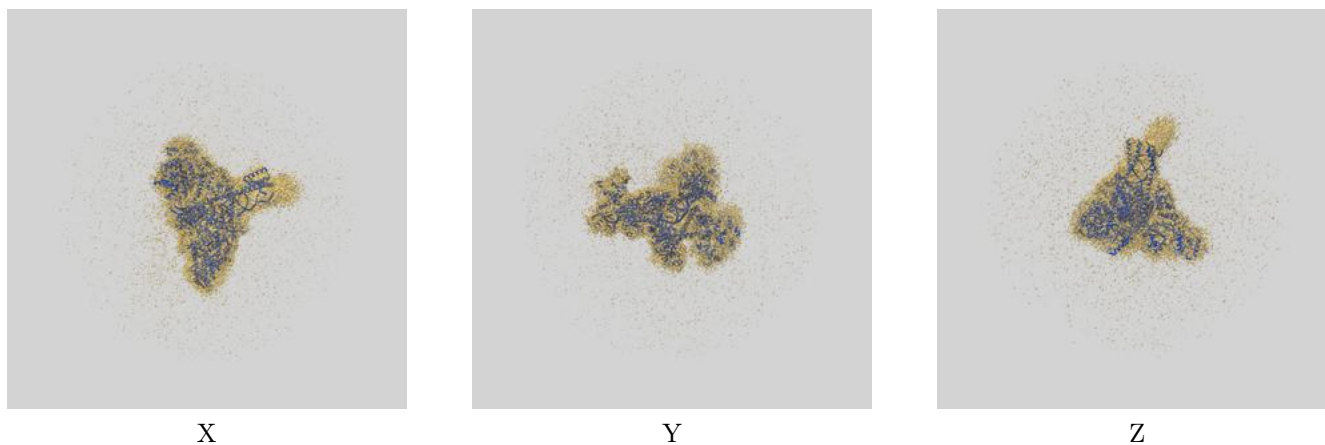
Resolution estimate (Å)	Estimation criterion (FSC cut-off)		
	0.143	0.5	Half-bit
Reported by author	2.75	-	-
Author-provided FSC curve	-	-	-
Unmasked-calculated*	4.11	7.75	4.27

*Resolution estimate based on FSC curve calculated by comparison of deposited half-maps. The value from deposited half-maps intersecting FSC 0.143 CUT-OFF 4.11 differs from the reported value 2.75 by more than 10 %

9 Map-model fit [i](#)

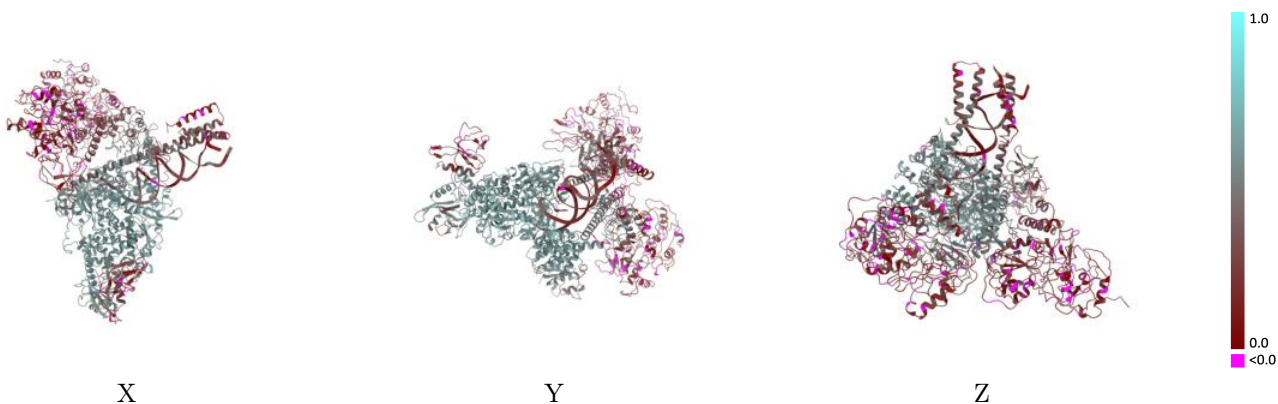
This section contains information regarding the fit between EMDB map EMD-34308 and PDB model 8GWB. Per-residue inclusion information can be found in section [3](#) on page [7](#).

9.1 Map-model overlay [i](#)



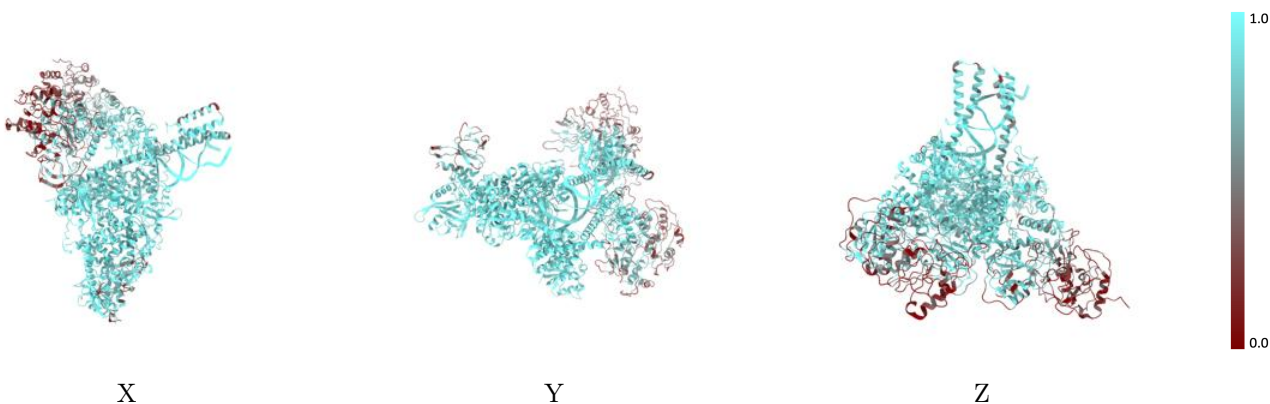
The images above show the 3D surface view of the map at the recommended contour level 0.2 at 50% transparency in yellow overlaid with a ribbon representation of the model coloured in blue. These images allow for the visual assessment of the quality of fit between the atomic model and the map.

9.2 Q-score mapped to coordinate model [i](#)



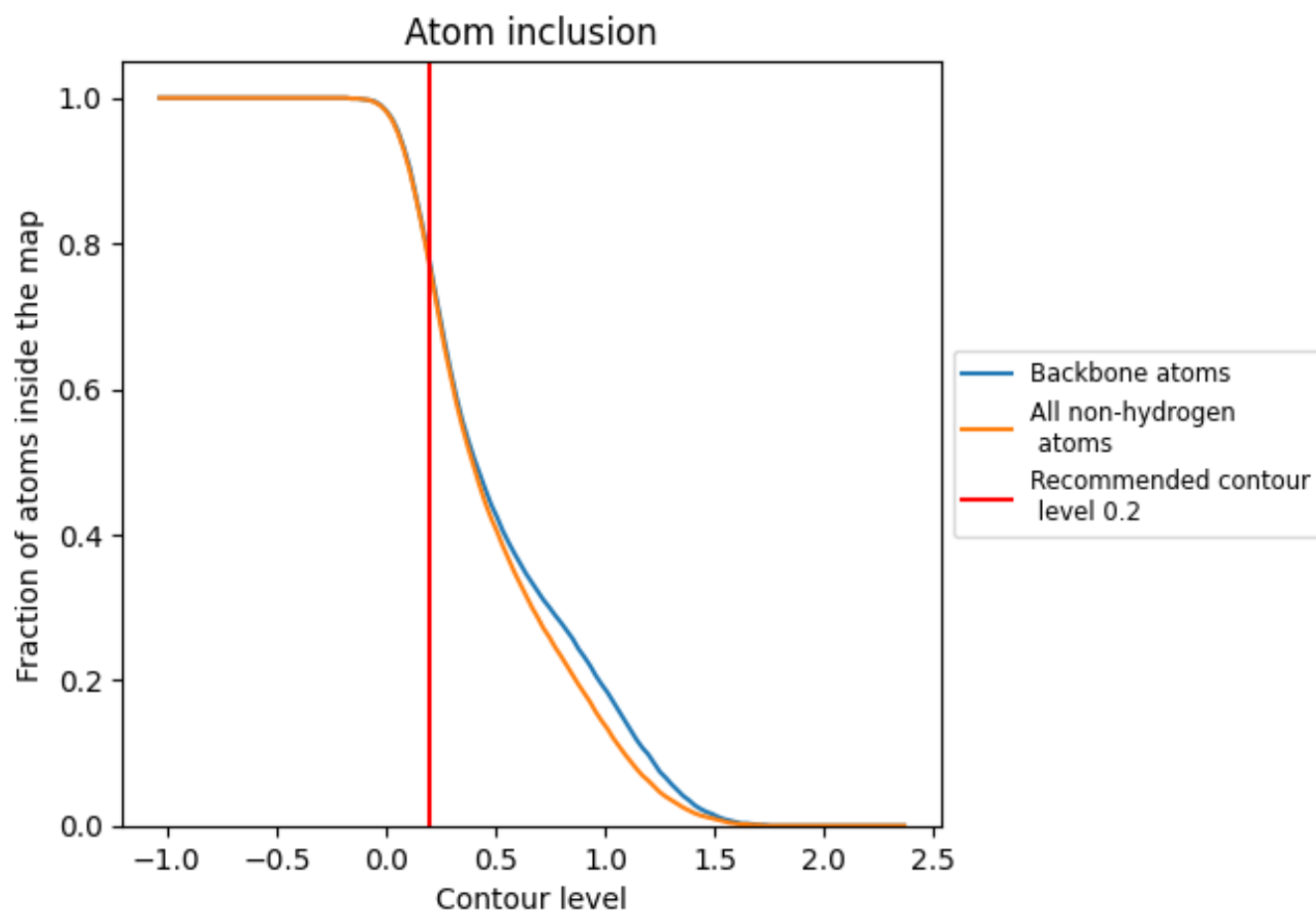
The images above show the model with each residue coloured according to its Q-score. This shows their resolvability in the map with higher Q-score values reflecting better resolvability. Please note: Q-score is calculating the resolvability of atoms, and thus high values are only expected at resolutions at which atoms can be resolved. Low Q-score values may therefore be expected for many entries.

9.3 Atom inclusion mapped to coordinate model [i](#)



The images above show the model with each residue coloured according to its atom inclusion. This shows to what extent they are inside the map at the recommended contour level (0.2).























9.4 Atom inclusion [i](#)



At the recommended contour level, 78% of all backbone atoms, 77% of all non-hydrogen atoms, are inside the map.

9.5 Map-model fit summary

The table lists the average atom inclusion at the recommended contour level (0.2) and Q-score for the entire model and for each chain.

Chain	Atom inclusion	Q-score
All	 0.7690	 0.3890
A	 0.9680	 0.5790
B	 0.9050	 0.4620
C	 0.9440	 0.5510
D	 0.8970	 0.4480
E	 0.5660	 0.2250
F	 0.5470	 0.2400
G	 0.5870	 0.2410
I	 0.9470	 0.2640
J	 0.8660	 0.2390
M	 0.9050	 0.3250

