



Full wwPDB X-ray Structure Validation Report ⓘ

Dec 10, 2023 – 05:11 am GMT

PDB ID : 1GY8
Title : Trypanosoma brucei UDP-galactose 4' epimerase
Authors : Shaw, M.P.; Bond, C.S.; Hunter, W.N.
Deposited on : 2002-04-21
Resolution : 2.00 Å(reported)

This is a Full wwPDB X-ray Structure Validation Report for a publicly released PDB entry.

We welcome your comments at validation@mail.wwpdb.org

A user guide is available at

<https://www.wwpdb.org/validation/2017/XrayValidationReportHelp>

with specific help available everywhere you see the ⓘ symbol.

The types of validation reports are described at

<http://www.wwpdb.org/validation/2017/FAQs#types>.

The following versions of software and data (see [references ⓘ](#)) were used in the production of this report:

MolProbity : 4.02b-467
Mogul : 1.8.4, CSD as541be (2020)
Xtriage (Phenix) : 1.13
EDS : 2.36
buster-report : 1.1.7 (2018)
Percentile statistics : 20191225.v01 (using entries in the PDB archive December 25th 2019)
Refmac : 5.8.0158
CCP4 : 7.0.044 (Gargrove)
Ideal geometry (proteins) : Engh & Huber (2001)
Ideal geometry (DNA, RNA) : Parkinson et al. (1996)
Validation Pipeline (wwPDB-VP) : 2.36

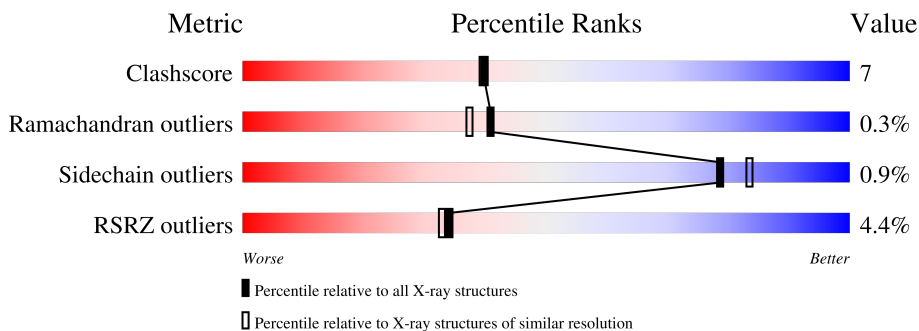
1 Overall quality at a glance

The following experimental techniques were used to determine the structure:

X-RAY DIFFRACTION

The reported resolution of this entry is 2.00 Å.

Percentile scores (ranging between 0-100) for global validation metrics of the entry are shown in the following graphic. The table shows the number of entries on which the scores are based.



Metric	Whole archive (#Entries)	Similar resolution (#Entries, resolution range(Å))
Clashscore	141614	9178 (2.00-2.00)
Ramachandran outliers	138981	9054 (2.00-2.00)
Sidechain outliers	138945	9053 (2.00-2.00)
RSRZ outliers	127900	7900 (2.00-2.00)

The table below summarises the geometric issues observed across the polymeric chains and their fit to the electron density. The red, orange, yellow and green segments of the lower bar indicate the fraction of residues that contain outliers for ≥ 3 , 2, 1 and 0 types of geometric quality criteria respectively. A grey segment represents the fraction of residues that are not modelled. The numeric value for each fraction is indicated below the corresponding segment, with a dot representing fractions $\leq 5\%$. The upper red bar (where present) indicates the fraction of residues that have poor fit to the electron density. The numeric value is given above the bar.

Mol	Chain	Length	Quality of chain
1	A	397	 5% (Poor fit) 80% (0 outliers) 12% (1 outlier) 8% (2+ outliers)
1	B	397	 3% (Poor fit) 76% (0 outliers) 15% (1 outlier) 8% (2+ outliers)
1	C	397	 5% (Poor fit) 78% (0 outliers) 14% (1 outlier) 7% (2+ outliers)
1	D	397	 4% (Poor fit) 79% (0 outliers) 12% (1 outlier) 8% (2+ outliers)

2 Entry composition [i](#)

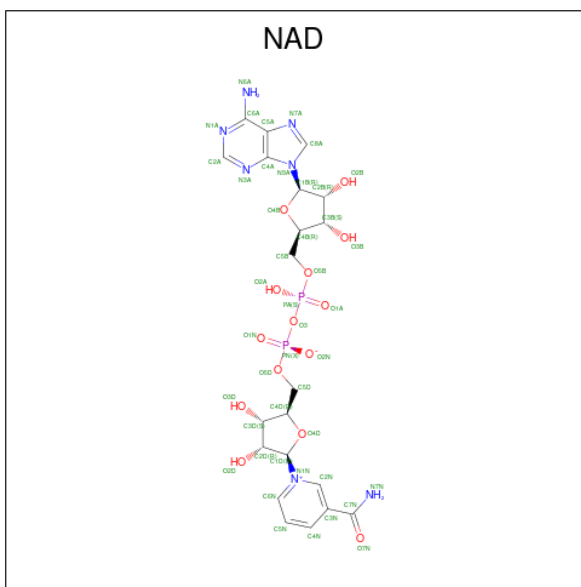
There are 4 unique types of molecules in this entry. The entry contains 12972 atoms, of which 0 are hydrogens and 0 are deuteriums.

In the tables below, the ZeroOcc column contains the number of atoms modelled with zero occupancy, the AltConf column contains the number of residues with at least one atom in alternate conformation and the Trace column contains the number of residues modelled with at most 2 atoms.

- Molecule 1 is a protein called UDP-GALACTOSE 4-EPIMERASE.

Mol	Chain	Residues	Atoms					ZeroOcc	AltConf	Trace
			Total	C	N	O	S			
1	A	367	Total	C	N	O	S	8	0	0
			2856	1798	509	532	17			
1	B	366	Total	C	N	O	S	13	0	0
			2848	1793	508	530	17			
1	C	370	Total	C	N	O	S	9	0	0
			2874	1808	512	537	17			
1	D	364	Total	C	N	O	S	12	0	0
			2833	1784	506	527	16			

- Molecule 2 is NICOTINAMIDE-ADENINE-DINUCLEOTIDE (three-letter code: NAD) (formula: $C_{21}H_{27}N_7O_{14}P_2$).



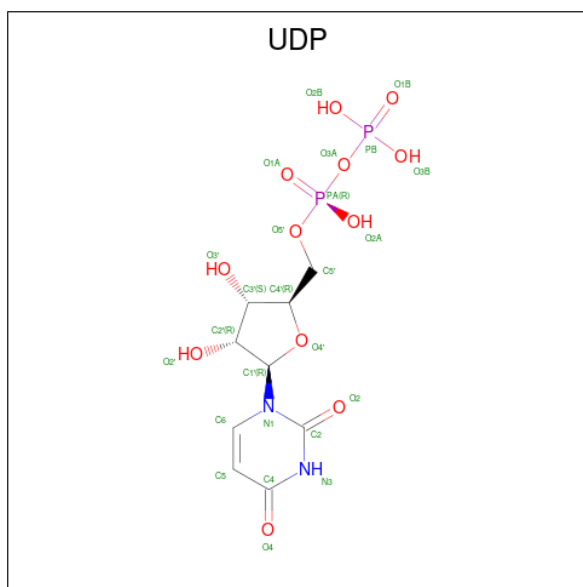
Mol	Chain	Residues	Atoms				ZeroOcc	AltConf	
			Total	C	N	O			P
2	A	1	Total	C	N	O	P	0	0
			44	21	7	14	2		
2	B	1	Total	C	N	O	P	0	0
			44	21	7	14	2		

Continued on next page...

Continued from previous page...

Mol	Chain	Residues	Atoms				ZeroOcc	AltConf	
2	C	1	Total	C	N	O	P	0	0
			44	21	7	14	2		
2	D	1	Total	C	N	O	P	0	0
			44	21	7	14	2		

- Molecule 3 is URIDINE-5'-DIPHOSPHATE (three-letter code: UDP) (formula: $C_9H_{14}N_2O_{12}P_2$).



Mol	Chain	Residues	Atoms				ZeroOcc	AltConf	
3	A	1	Total	C	N	O	P	0	0
			25	9	2	12	2		
3	B	1	Total	C	N	O	P	0	0
			25	9	2	12	2		
3	C	1	Total	C	N	O	P	0	0
			25	9	2	12	2		
3	D	1	Total	C	N	O	P	0	0
			25	9	2	12	2		

- Molecule 4 is water.

Mol	Chain	Residues	Atoms		ZeroOcc	AltConf
4	A	337	Total	O	0	0
			337	337		
4	B	350	Total	O	0	0
			350	350		
4	C	345	Total	O	0	0
			345	345		

Continued on next page...

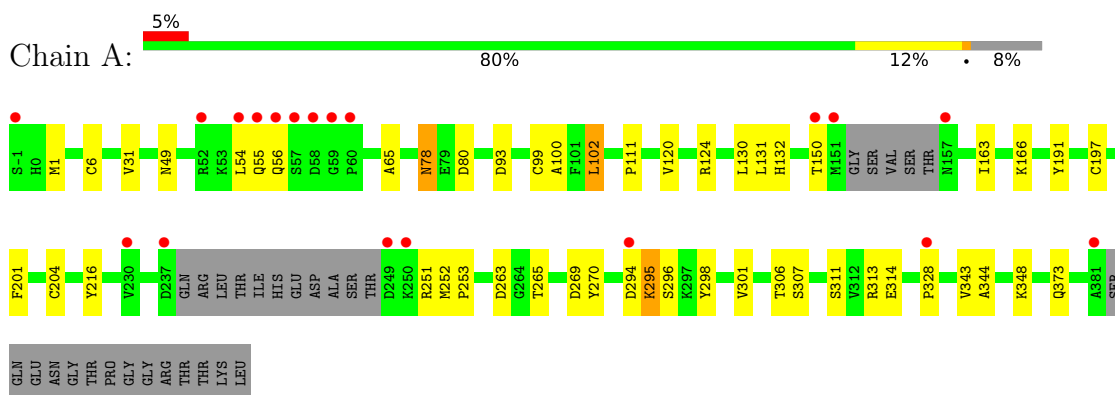
Continued from previous page...

Mol	Chain	Residues	Atoms		ZeroOcc	AltConf
4	D	253	Total 253	O 253	0	0

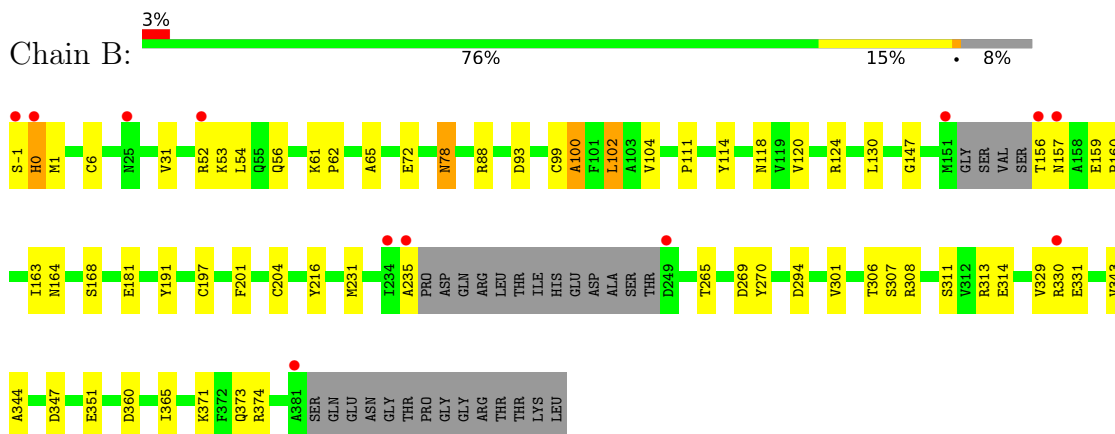
3 Residue-property plots [i](#)

These plots are drawn for all protein, RNA, DNA and oligosaccharide chains in the entry. The first graphic for a chain summarises the proportions of the various outlier classes displayed in the second graphic. The second graphic shows the sequence view annotated by issues in geometry and electron density. Residues are color-coded according to the number of geometric quality criteria for which they contain at least one outlier: green = 0, yellow = 1, orange = 2 and red = 3 or more. A red dot above a residue indicates a poor fit to the electron density ($RSRZ > 2$). Stretches of 2 or more consecutive residues without any outlier are shown as a green connector. Residues present in the sample, but not in the model, are shown in grey.

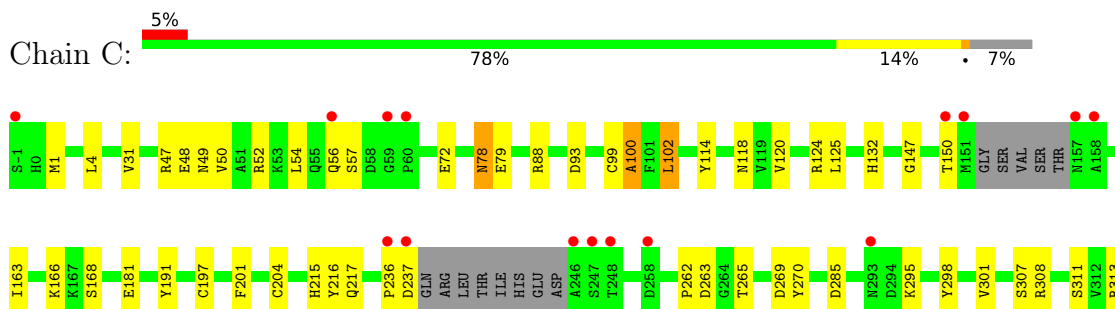
- Molecule 1: UDP-GALACTOSE 4-EPIMERASE

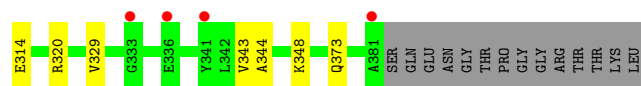


- Molecule 1: UDP-GALACTOSE 4-EPIMERASE

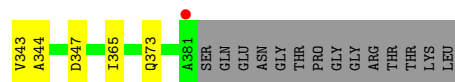
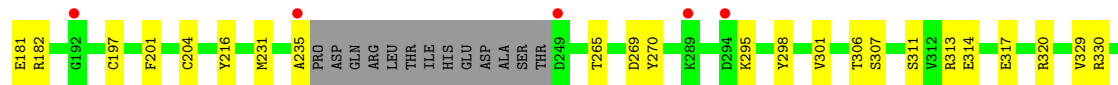
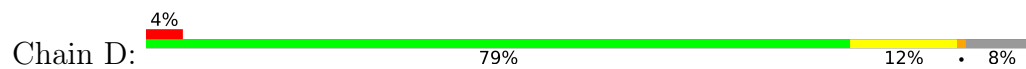


- Molecule 1: UDP-GALACTOSE 4-EPIMERASE





• Molecule 1: UDP-GALACTOSE 4-EPIMERASE



4 Data and refinement statistics

Property	Value	Source
Space group	P 21 21 21	Depositor
Cell constants a, b, c, α , β , γ	102.19Å 112.53Å 160.59Å 90.00° 90.00° 90.00°	Depositor
Resolution (Å)	100.00 – 2.00 20.04 – 2.00	Depositor EDS
% Data completeness (in resolution range)	89.5 (100.00-2.00) 85.3 (20.04-2.00)	Depositor EDS
R_{merge}	0.07	Depositor
R_{sym}	(Not available)	Depositor
$\langle I/\sigma(I) \rangle$ ¹	0.91 (at 2.01Å)	Xtrriage
Refinement program	CNS	Depositor
R, R_{free}	0.216 , 0.245 0.214 , (Not available)	Depositor DCC
R_{free} test set	No test flags present.	wwPDB-VP
Wilson B-factor (Å ²)	22.1	Xtrriage
Anisotropy	0.418	Xtrriage
Bulk solvent k_{sol} (e/Å ³), B_{sol} (Å ²)	0.34 , 51.2	EDS
L-test for twinning ²	$\langle L \rangle = 0.49$, $\langle L^2 \rangle = 0.32$	Xtrriage
Estimated twinning fraction	No twinning to report.	Xtrriage
F_o, F_c correlation	0.94	EDS
Total number of atoms	12972	wwPDB-VP
Average B, all atoms (Å ²)	34.0	wwPDB-VP

Xtrriage's analysis on translational NCS is as follows: *The analyses of the Patterson function reveals a significant off-origin peak that is 47.41 % of the origin peak, indicating pseudo-translational symmetry. The chance of finding a peak of this or larger height randomly in a structure without pseudo-translational symmetry is equal to 9.9652e-05. The detected translational NCS is most likely also responsible for the elevated intensity ratio.*

¹Intensities estimated from amplitudes.

²Theoretical values of $\langle |L| \rangle$, $\langle L^2 \rangle$ for acentric reflections are 0.5, 0.333 respectively for untwinned datasets, and 0.375, 0.2 for perfectly twinned datasets.

5 Model quality [i](#)

5.1 Standard geometry [i](#)

Bond lengths and bond angles in the following residue types are not validated in this section: UDP, NAD

The Z score for a bond length (or angle) is the number of standard deviations the observed value is removed from the expected value. A bond length (or angle) with $|Z| > 5$ is considered an outlier worth inspection. RMSZ is the root-mean-square of all Z scores of the bond lengths (or angles).

Mol	Chain	Bond lengths		Bond angles	
		RMSZ	# Z >5	RMSZ	# Z >5
1	A	0.32	0/2921	0.58	0/3956
1	B	0.32	0/2912	0.59	0/3943
1	C	0.33	0/2939	0.59	0/3981
1	D	0.32	0/2897	0.58	0/3923
All	All	0.32	0/11669	0.59	0/15803

There are no bond length outliers.

There are no bond angle outliers.

There are no chirality outliers.

There are no planarity outliers.

5.2 Too-close contacts [i](#)

In the following table, the Non-H and H(model) columns list the number of non-hydrogen atoms and hydrogen atoms in the chain respectively. The H(added) column lists the number of hydrogen atoms added and optimized by MolProbity. The Clashes column lists the number of clashes within the asymmetric unit, whereas Symm-Clashes lists symmetry-related clashes.

Mol	Chain	Non-H	H(model)	H(added)	Clashes	Symm-Clashes
1	A	2856	0	2807	35	0
1	B	2848	0	2803	53	0
1	C	2874	0	2824	45	0
1	D	2833	0	2787	38	0
2	A	44	0	26	0	0
2	B	44	0	26	0	0
2	C	44	0	26	0	0
2	D	44	0	26	0	0
3	A	25	0	11	0	0

Continued on next page...

Continued from previous page...

Mol	Chain	Non-H	H(model)	H(added)	Clashes	Symm-Clashes
3	B	25	0	11	0	0
3	C	25	0	11	0	0
3	D	25	0	11	0	0
4	A	337	0	0	4	0
4	B	350	0	0	6	0
4	C	345	0	0	7	0
4	D	253	0	0	2	0
All	All	12972	0	11369	167	0

The all-atom clashscore is defined as the number of clashes found per 1000 atoms (including hydrogen atoms). The all-atom clashscore for this structure is 7.

All (167) close contacts within the same asymmetric unit are listed below, sorted by their clash magnitude.

Atom-1	Atom-2	Interatomic distance (Å)	Clash overlap (Å)
1:B:156:THR:HG23	1:B:157:ASN:H	1.35	0.91
1:B:308:ARG:HD2	1:B:360:ASP:OD1	1.79	0.82
1:B:159:GLU:HG3	1:B:160:PRO:HD2	1.65	0.78
1:B:56:GLN:HG2	4:B:2073:HOH:O	1.85	0.76
1:C:265:THR:HG23	1:C:313:ARG:NH1	2.02	0.74
1:B:54:LEU:HD21	1:B:61:LYS:HE2	1.68	0.74
1:D:150:THR:OG1	1:D:166:LYS:HD3	1.93	0.69
1:C:78:ASN:C	1:C:78:ASN:HD22	1.95	0.69
1:B:78:ASN:C	1:B:78:ASN:HD22	1.97	0.69
1:B:371:LYS:HA	1:B:374:ARG:NH1	2.08	0.68
1:B:6:CYS:HA	1:B:31:VAL:HG13	1.74	0.68
1:D:78:ASN:HD22	1:D:78:ASN:C	1.94	0.68
1:A:294:ASP:O	1:A:296:SER:N	2.27	0.67
1:B:265:THR:HG23	1:B:313:ARG:NH1	2.09	0.67
1:D:265:THR:HG23	1:D:313:ARG:NH1	2.10	0.67
1:A:204:CYS:SG	1:A:270:TYR:HB3	2.36	0.66
1:D:6:CYS:HA	1:D:31:VAL:HG13	1.78	0.65
1:C:49:ASN:ND2	1:C:52:ARG:HH22	1.94	0.65
1:A:216:TYR:H	1:A:373:GLN:HE22	1.44	0.65
1:B:216:TYR:H	1:B:373:GLN:HE22	1.43	0.65
1:D:216:TYR:H	1:D:373:GLN:HE22	1.43	0.65
1:B:265:THR:HG23	1:B:313:ARG:HH11	1.62	0.65
1:C:348:LYS:HE3	4:C:2301:HOH:O	1.96	0.64
1:D:204:CYS:SG	1:D:365:ILE:HG21	2.38	0.64
1:C:216:TYR:H	1:C:373:GLN:HE22	1.44	0.64
1:D:47:ARG:HD3	1:D:68:TYR:CE2	2.34	0.63

Continued on next page...

Continued from previous page...

Atom-1	Atom-2	Interatomic distance (Å)	Clash overlap (Å)
1:C:52:ARG:O	1:C:56:GLN:HG3	2.00	0.62
1:B:204:CYS:SG	1:B:365:ILE:HG21	2.40	0.62
1:B:156:THR:HG23	1:B:157:ASN:N	2.14	0.61
1:D:295:LYS:HA	1:D:298:TYR:CD1	2.36	0.61
1:A:78:ASN:HD22	1:A:78:ASN:C	2.04	0.60
1:B:204:CYS:SG	1:B:270:TYR:HB3	2.42	0.60
1:C:204:CYS:SG	1:C:270:TYR:HB3	2.41	0.60
1:A:54:LEU:HD22	1:A:65:ALA:HB1	1.84	0.60
1:D:166:LYS:HE2	4:D:2134:HOH:O	2.02	0.59
1:D:317:GLU:OE1	1:D:320:ARG:NH1	2.34	0.59
1:C:4:LEU:HD11	1:C:31:VAL:HG23	1.85	0.59
1:B:72:GLU:OE2	1:B:88:ARG:NH2	2.36	0.59
1:A:191:TYR:CZ	1:B:111:PRO:HD2	2.38	0.58
1:D:182:ARG:HG3	1:D:182:ARG:HH11	1.67	0.58
1:A:265:THR:HG23	1:A:313:ARG:NH1	2.18	0.58
1:B:347:ASP:O	1:B:351:GLU:HG3	2.05	0.57
1:C:285:ASP:HB2	4:C:2246:HOH:O	2.03	0.57
1:D:265:THR:HG23	1:D:313:ARG:HH11	1.69	0.57
1:A:251:ARG:HG2	1:A:328:PRO:HB2	1.86	0.57
1:C:99:CYS:O	1:C:100:ALA:HB2	2.04	0.56
1:D:54:LEU:HD11	1:D:61:LYS:HG2	1.87	0.56
1:A:132:HIS:HE1	4:A:2094:HOH:O	1.88	0.56
1:B:330:ARG:O	1:B:330:ARG:HG3	2.06	0.56
1:C:163:ILE:HD13	1:C:348:LYS:HG3	1.87	0.55
1:A:131:LEU:HD23	4:A:2094:HOH:O	2.06	0.55
1:B:52:ARG:O	1:B:56:GLN:HG3	2.07	0.55
1:D:269:ASP:HB2	1:D:343:VAL:HA	1.89	0.55
1:A:263:ASP:O	1:A:313:ARG:NH1	2.40	0.54
1:D:231:MET:O	1:D:235:ALA:N	2.39	0.54
1:C:132:HIS:HD2	4:C:2158:HOH:O	1.90	0.54
1:A:269:ASP:HB2	1:A:343:VAL:HA	1.89	0.54
1:C:269:ASP:HB2	1:C:343:VAL:HA	1.88	0.54
1:B:306:THR:O	1:B:307:SER:HB2	2.07	0.54
1:D:329:VAL:CG1	1:D:330:ARG:N	2.71	0.54
1:B:269:ASP:HB2	1:B:343:VAL:HA	1.90	0.53
1:C:311:SER:OG	1:C:314:GLU:HG3	2.08	0.53
1:B:329:VAL:CG1	1:B:330:ARG:N	2.71	0.53
1:A:150:THR:OG1	1:A:166:LYS:HD3	2.08	0.52
1:D:182:ARG:HG3	1:D:182:ARG:NH1	2.24	0.52
1:B:157:ASN:HA	4:B:2170:HOH:O	2.09	0.52
1:B:313:ARG:NH2	1:B:331:GLU:OE2	2.42	0.52

Continued on next page...

Continued from previous page...

Atom-1	Atom-2	Interatomic distance (Å)	Clash overlap (Å)
1:D:78:ASN:C	1:D:78:ASN:ND2	2.63	0.52
1:A:307:SER:HA	1:A:344:ALA:O	2.10	0.52
1:B:104:VAL:HG12	4:B:2300:HOH:O	2.09	0.52
1:D:1:MET:HG3	1:D:93:ASP:CB	2.41	0.51
1:D:99:CYS:O	1:D:100:ALA:HB2	2.10	0.51
1:D:204:CYS:SG	1:D:270:TYR:HB3	2.51	0.51
1:B:1:MET:HG3	1:B:93:ASP:CB	2.41	0.51
1:C:215:HIS:NE2	1:C:217:GLN:NE2	2.58	0.51
1:C:1:MET:HG3	1:C:93:ASP:CB	2.41	0.51
1:D:201:PHE:CZ	1:D:344:ALA:HB2	2.46	0.51
1:C:201:PHE:CE1	1:C:344:ALA:HB2	2.46	0.50
1:D:311:SER:OG	1:D:314:GLU:HG3	2.11	0.50
1:B:374:ARG:NH1	4:B:2330:HOH:O	2.44	0.50
1:A:1:MET:HG3	1:A:93:ASP:CB	2.41	0.50
1:B:201:PHE:CZ	1:B:344:ALA:HB2	2.47	0.50
1:B:99:CYS:O	1:B:100:ALA:HB2	2.11	0.50
1:B:294:ASP:HA	4:B:2261:HOH:O	2.11	0.50
1:A:201:PHE:CE1	1:A:344:ALA:HB2	2.47	0.49
1:A:311:SER:OG	1:A:314:GLU:HG3	2.12	0.49
1:B:311:SER:OG	1:B:314:GLU:HG3	2.12	0.49
1:B:201:PHE:CE1	1:B:344:ALA:HB2	2.47	0.49
1:A:201:PHE:CZ	1:A:344:ALA:HB2	2.47	0.49
1:B:231:MET:O	1:B:235:ALA:N	2.46	0.49
1:C:215:HIS:CD2	1:C:217:GLN:HB2	2.48	0.49
1:A:6:CYS:HA	1:A:31:VAL:HG13	1.94	0.49
1:B:78:ASN:C	1:B:78:ASN:ND2	2.65	0.49
1:C:201:PHE:CZ	1:C:344:ALA:HB2	2.47	0.49
1:D:201:PHE:CE1	1:D:344:ALA:HB2	2.47	0.49
1:A:49:ASN:HB3	4:A:2056:HOH:O	2.12	0.48
1:C:78:ASN:C	1:C:78:ASN:ND2	2.64	0.48
1:C:4:LEU:HD11	1:C:31:VAL:CG2	2.44	0.47
1:A:111:PRO:HD2	1:B:191:TYR:CZ	2.50	0.47
1:C:150:THR:OG1	1:C:166:LYS:HD3	2.15	0.47
1:C:191:TYR:CZ	1:D:111:PRO:HD2	2.49	0.47
1:D:54:LEU:HD21	1:D:61:LYS:HE2	1.96	0.47
1:A:55:GLN:CD	1:A:56:GLN:N	2.69	0.47
1:A:120:VAL:O	1:A:124:ARG:HG2	2.15	0.46
1:B:-1:SER:O	1:B:0:HIS:C	2.53	0.46
1:A:306:THR:O	1:A:307:SER:HB2	2.16	0.46
1:B:159:GLU:HG3	1:B:160:PRO:CD	2.40	0.46
1:C:72:GLU:OE2	1:C:88:ARG:NH2	2.49	0.46

Continued on next page...

Continued from previous page...

Atom-1	Atom-2	Interatomic distance (Å)	Clash overlap (Å)
1:B:62:PRO:HD2	1:B:65:ALA:HB2	1.98	0.46
1:D:120:VAL:O	1:D:124:ARG:HG2	2.16	0.46
1:B:54:LEU:HD11	1:B:61:LYS:HG2	1.98	0.45
1:C:120:VAL:O	1:C:124:ARG:HG2	2.16	0.45
1:A:99:CYS:O	1:A:100:ALA:HB2	2.17	0.45
1:A:252:MET:HA	1:A:253:PRO:HD3	1.82	0.45
1:B:197:CYS:HB2	1:B:301:VAL:HG12	1.99	0.45
1:D:197:CYS:HB2	1:D:301:VAL:HG12	1.99	0.45
1:C:307:SER:HA	1:C:344:ALA:O	2.17	0.44
1:C:295:LYS:HA	1:C:298:TYR:CD1	2.52	0.44
1:B:156:THR:O	1:B:157:ASN:HB3	2.17	0.44
1:B:147:GLY:HA3	1:B:168:SER:O	2.17	0.44
1:C:262:PRO:HD3	4:C:2109:HOH:O	2.16	0.44
1:B:72:GLU:CD	1:B:88:ARG:HH22	2.21	0.44
1:D:306:THR:O	1:D:307:SER:HB2	2.18	0.44
1:A:163:ILE:HD13	1:A:348:LYS:HG3	2.00	0.44
1:C:265:THR:HG23	1:C:313:ARG:HH12	1.81	0.43
1:B:102:LEU:N	1:B:102:LEU:HD23	2.33	0.43
1:B:120:VAL:O	1:B:124:ARG:HG2	2.18	0.43
1:C:57:SER:HB2	4:C:2068:HOH:O	2.17	0.43
1:C:263:ASP:O	1:C:313:ARG:NH1	2.52	0.43
1:C:47:ARG:HG2	1:C:48:GLU:OE2	2.18	0.43
1:A:197:CYS:HB2	1:A:301:VAL:HG12	2.00	0.43
1:A:295:LYS:HA	1:A:298:TYR:CD1	2.53	0.43
1:D:330:ARG:O	1:D:330:ARG:HG3	2.18	0.43
1:D:-1:SER:O	1:D:0:HIS:C	2.56	0.43
1:B:130:LEU:HD12	1:B:130:LEU:HA	1.92	0.43
1:C:102:LEU:HD23	1:C:102:LEU:N	2.34	0.43
1:B:1:MET:HG3	1:B:93:ASP:HB2	2.00	0.42
1:A:78:ASN:C	1:A:78:ASN:ND2	2.72	0.42
1:C:49:ASN:HD22	1:C:52:ARG:HH22	1.66	0.42
1:C:197:CYS:HB2	1:C:301:VAL:HG12	2.01	0.42
1:D:1:MET:HG3	1:D:93:ASP:HB2	1.99	0.42
1:C:114:TYR:O	1:C:118:ASN:HB2	2.20	0.42
1:A:1:MET:HG3	1:A:93:ASP:HB2	2.02	0.42
1:A:102:LEU:HD23	1:A:102:LEU:N	2.34	0.42
1:C:215:HIS:HD2	1:C:217:GLN:HB2	1.84	0.42
1:C:320:ARG:NH2	1:C:329:VAL:HG13	2.35	0.42
1:C:236:PRO:O	1:C:237:ASP:C	2.58	0.42
1:A:111:PRO:HD2	1:B:191:TYR:OH	2.20	0.42
1:B:307:SER:HA	1:B:344:ALA:O	2.19	0.41

Continued on next page...

Continued from previous page...

Atom-1	Atom-2	Interatomic distance (Å)	Clash overlap (Å)
1:A:54:LEU:HB2	4:A:2065:HOH:O	2.20	0.41
1:D:61:LYS:HB3	1:D:65:ALA:CB	2.50	0.41
1:C:181:GLU:HG2	1:C:197:CYS:SG	2.61	0.41
1:B:181:GLU:HG2	1:B:197:CYS:SG	2.61	0.41
1:C:50:VAL:O	1:C:54:LEU:HB2	2.21	0.41
1:C:147:GLY:HA3	1:C:168:SER:O	2.20	0.41
1:D:53:LYS:NZ	4:D:2053:HOH:O	2.49	0.41
1:D:102:LEU:HD23	1:D:102:LEU:N	2.34	0.41
1:C:1:MET:HG3	1:C:93:ASP:HB2	2.02	0.41
1:C:79:GLU:HB2	4:C:2093:HOH:O	2.21	0.41
1:D:130:LEU:HD12	1:D:130:LEU:HA	1.92	0.41
1:D:181:GLU:HG2	1:D:197:CYS:SG	2.60	0.41
1:A:130:LEU:HD12	1:A:130:LEU:HA	1.91	0.40
1:B:163:ILE:HG13	1:B:164:ASN:N	2.36	0.40
1:C:308:ARG:HD2	4:C:2264:HOH:O	2.21	0.40
1:B:53:LYS:HG3	4:B:2060:HOH:O	2.21	0.40
1:B:114:TYR:O	1:B:118:ASN:HB2	2.21	0.40
1:D:2:ARG:HD3	1:D:27:SER:HB2	2.04	0.40

There are no symmetry-related clashes.

5.3 Torsion angles

5.3.1 Protein backbone

In the following table, the Percentiles column shows the percent Ramachandran outliers of the chain as a percentile score with respect to all X-ray entries followed by that with respect to entries of similar resolution.

The Analysed column shows the number of residues for which the backbone conformation was analysed, and the total number of residues.

Mol	Chain	Analysed	Favoured	Allowed	Outliers	Percentiles
1	A	361/397 (91%)	348 (96%)	12 (3%)	1 (0%)	41 37
1	B	360/397 (91%)	348 (97%)	10 (3%)	2 (1%)	25 19
1	C	364/397 (92%)	356 (98%)	7 (2%)	1 (0%)	41 37
1	D	358/397 (90%)	350 (98%)	7 (2%)	1 (0%)	41 37
All	All	1443/1588 (91%)	1402 (97%)	36 (2%)	5 (0%)	41 37

All (5) Ramachandran outliers are listed below:

Mol	Chain	Res	Type
1	A	295	LYS
1	B	0	HIS
1	D	0	HIS
1	B	100	ALA
1	C	100	ALA

5.3.2 Protein sidechains [i](#)

In the following table, the Percentiles column shows the percent sidechain outliers of the chain as a percentile score with respect to all X-ray entries followed by that with respect to entries of similar resolution.

The Analysed column shows the number of residues for which the sidechain conformation was analysed, and the total number of residues.

Mol	Chain	Analysed	Rotameric	Outliers	Percentiles	
1	A	306/331 (92%)	303 (99%)	3 (1%)	76	81
1	B	305/331 (92%)	303 (99%)	2 (1%)	84	88
1	C	308/331 (93%)	305 (99%)	3 (1%)	76	81
1	D	303/331 (92%)	300 (99%)	3 (1%)	76	81
All	All	1222/1324 (92%)	1211 (99%)	11 (1%)	78	83

All (11) residues with a non-rotameric sidechain are listed below:

Mol	Chain	Res	Type
1	A	78	ASN
1	A	80	ASP
1	A	102	LEU
1	B	78	ASN
1	B	102	LEU
1	C	78	ASN
1	C	102	LEU
1	C	125	LEU
1	D	78	ASN
1	D	102	LEU
1	D	347	ASP

Sometimes sidechains can be flipped to improve hydrogen bonding and reduce clashes. All (24) such sidechains are listed below:

Mol	Chain	Res	Type
1	A	25	ASN

Continued on next page...

Continued from previous page...

Mol	Chain	Res	Type
1	A	49	ASN
1	A	55	GLN
1	A	78	ASN
1	A	83	ASN
1	A	132	HIS
1	A	373	GLN
1	B	49	ASN
1	B	78	ASN
1	B	83	ASN
1	B	132	HIS
1	B	373	GLN
1	C	49	ASN
1	C	78	ASN
1	C	83	ASN
1	C	132	HIS
1	C	217	GLN
1	C	373	GLN
1	D	49	ASN
1	D	56	GLN
1	D	78	ASN
1	D	83	ASN
1	D	132	HIS
1	D	373	GLN

5.3.3 RNA [i](#)

There are no RNA molecules in this entry.

5.4 Non-standard residues in protein, DNA, RNA chains [i](#)

There are no non-standard protein/DNA/RNA residues in this entry.

5.5 Carbohydrates [i](#)

There are no monosaccharides in this entry.

5.6 Ligand geometry [i](#)

8 ligands are modelled in this entry.

In the following table, the Counts columns list the number of bonds (or angles) for which Mogul statistics could be retrieved, the number of bonds (or angles) that are observed in the model and the number of bonds (or angles) that are defined in the Chemical Component Dictionary. The Link column lists molecule types, if any, to which the group is linked. The Z score for a bond length (or angle) is the number of standard deviations the observed value is removed from the expected value. A bond length (or angle) with $|Z| > 2$ is considered an outlier worth inspection. RMSZ is the root-mean-square of all Z scores of the bond lengths (or angles).

Mol	Type	Chain	Res	Link	Bond lengths			Bond angles		
					Counts	RMSZ	# Z > 2	Counts	RMSZ	# Z > 2
2	NAD	A	1382	-	42,48,48	1.88	7 (16%)	50,73,73	1.21	4 (8%)
2	NAD	D	1382	-	42,48,48	1.96	8 (19%)	50,73,73	1.21	4 (8%)
3	UDP	C	1383	-	24,26,26	1.45	4 (16%)	37,40,40	1.50	6 (16%)
2	NAD	C	1382	-	42,48,48	1.92	7 (16%)	50,73,73	1.21	4 (8%)
3	UDP	D	1383	-	24,26,26	1.52	3 (12%)	37,40,40	1.53	6 (16%)
3	UDP	B	1383	-	24,26,26	1.50	4 (16%)	37,40,40	1.51	6 (16%)
2	NAD	B	1382	-	42,48,48	1.98	8 (19%)	50,73,73	1.22	4 (8%)
3	UDP	A	1383	-	24,26,26	1.52	4 (16%)	37,40,40	1.52	6 (16%)

In the following table, the Chirals column lists the number of chiral outliers, the number of chiral centers analysed, the number of these observed in the model and the number defined in the Chemical Component Dictionary. Similar counts are reported in the Torsion and Rings columns. '-' means no outliers of that kind were identified.

Mol	Type	Chain	Res	Link	Chirals	Torsions	Rings
2	NAD	A	1382	-	-	8/26/62/62	0/5/5/5
2	NAD	D	1382	-	-	8/26/62/62	0/5/5/5
3	UDP	C	1383	-	-	1/16/32/32	0/2/2/2
2	NAD	C	1382	-	-	9/26/62/62	0/5/5/5
3	UDP	D	1383	-	-	1/16/32/32	0/2/2/2
3	UDP	B	1383	-	-	1/16/32/32	0/2/2/2
2	NAD	B	1382	-	-	9/26/62/62	0/5/5/5
3	UDP	A	1383	-	-	1/16/32/32	0/2/2/2

All (45) bond length outliers are listed below:

Mol	Chain	Res	Type	Atoms	Z	Observed(Å)	Ideal(Å)
2	B	1382	NAD	C2N-N1N	8.03	1.44	1.35
2	C	1382	NAD	C2N-N1N	7.76	1.44	1.35
2	D	1382	NAD	C2N-N1N	7.68	1.44	1.35
2	A	1382	NAD	C2N-N1N	7.56	1.44	1.35
2	C	1382	NAD	O4D-C1D	4.63	1.47	1.41

Continued on next page...

Continued from previous page...

Mol	Chain	Res	Type	Atoms	Z	Observed(Å)	Ideal(Å)
2	B	1382	NAD	O4D-C1D	4.49	1.47	1.41
2	D	1382	NAD	O4D-C1D	4.34	1.47	1.41
2	A	1382	NAD	O4D-C1D	4.25	1.47	1.41
2	B	1382	NAD	C6N-N1N	3.47	1.43	1.35
2	D	1382	NAD	C3N-C7N	3.46	1.55	1.50
2	D	1382	NAD	C6N-N1N	3.42	1.43	1.35
2	B	1382	NAD	C3N-C7N	3.32	1.55	1.50
3	A	1383	UDP	PB-O1B	3.32	1.61	1.50
3	D	1383	UDP	PB-O1B	3.31	1.61	1.50
3	B	1383	UDP	PB-O1B	3.29	1.61	1.50
2	B	1382	NAD	C4N-C3N	3.29	1.44	1.39
2	C	1382	NAD	C6N-N1N	3.26	1.43	1.35
3	C	1383	UDP	PB-O1B	3.24	1.61	1.50
2	A	1382	NAD	C3N-C7N	3.22	1.55	1.50
2	A	1382	NAD	C6N-N1N	3.18	1.43	1.35
2	D	1382	NAD	C4N-C3N	3.07	1.44	1.39
2	C	1382	NAD	C4N-C3N	3.07	1.44	1.39
2	A	1382	NAD	C4N-C3N	3.03	1.44	1.39
2	C	1382	NAD	C3N-C7N	3.01	1.55	1.50
2	D	1382	NAD	C5N-C4N	2.97	1.45	1.38
2	C	1382	NAD	C5N-C4N	2.93	1.45	1.38
2	B	1382	NAD	C5N-C4N	2.90	1.45	1.38
3	A	1383	UDP	PA-O1A	2.84	1.61	1.50
2	A	1382	NAD	C5N-C4N	2.82	1.44	1.38
3	D	1383	UDP	PA-O1A	2.82	1.60	1.50
2	D	1382	NAD	C4A-N3A	2.79	1.39	1.35
3	C	1383	UDP	PA-O1A	2.65	1.60	1.50
3	B	1383	UDP	PA-O1A	2.64	1.60	1.50
3	A	1383	UDP	C6-C5	2.33	1.40	1.35
2	A	1382	NAD	C4A-N3A	2.33	1.38	1.35
2	B	1382	NAD	C2A-N3A	2.28	1.35	1.32
3	D	1383	UDP	C6-C5	2.26	1.40	1.35
3	C	1383	UDP	C6-C5	2.23	1.40	1.35
3	B	1383	UDP	C6-C5	2.21	1.40	1.35
2	C	1382	NAD	C4A-N3A	2.19	1.38	1.35
2	B	1382	NAD	C4A-N3A	2.17	1.38	1.35
3	B	1383	UDP	C2-N1	2.16	1.41	1.38
3	C	1383	UDP	O4'-C1'	2.12	1.47	1.42
3	A	1383	UDP	C2-N1	2.07	1.41	1.38
2	D	1382	NAD	C2A-N3A	2.00	1.35	1.32

All (40) bond angle outliers are listed below:

Mol	Chain	Res	Type	Atoms	Z	Observed(°)	Ideal(°)
2	B	1382	NAD	N3A-C2A-N1A	-5.10	120.71	128.68
2	D	1382	NAD	N3A-C2A-N1A	-5.09	120.72	128.68
2	C	1382	NAD	N3A-C2A-N1A	-5.08	120.74	128.68
2	A	1382	NAD	N3A-C2A-N1A	-5.07	120.75	128.68
3	D	1383	UDP	C4-N3-C2	-4.76	120.30	126.58
3	A	1383	UDP	C4-N3-C2	-4.71	120.36	126.58
3	B	1383	UDP	C4-N3-C2	-4.71	120.37	126.58
3	C	1383	UDP	C4-N3-C2	-4.57	120.55	126.58
3	A	1383	UDP	C5-C4-N3	3.77	120.47	114.84
3	B	1383	UDP	C5-C4-N3	3.75	120.45	114.84
3	D	1383	UDP	C5-C4-N3	3.72	120.41	114.84
3	C	1383	UDP	C5-C4-N3	3.64	120.28	114.84
3	C	1383	UDP	N3-C2-N1	3.38	119.38	114.89
3	D	1383	UDP	N3-C2-N1	3.35	119.33	114.89
3	A	1383	UDP	N3-C2-N1	3.34	119.32	114.89
3	B	1383	UDP	N3-C2-N1	3.24	119.19	114.89
3	B	1383	UDP	O4-C4-C5	-3.05	119.79	125.16
3	D	1383	UDP	O4-C4-C5	-3.05	119.79	125.16
3	A	1383	UDP	O4-C4-C5	-2.99	119.90	125.16
3	C	1383	UDP	O4-C4-C5	-2.84	120.17	125.16
3	D	1383	UDP	PA-O3A-PB	-2.71	123.52	132.83
3	B	1383	UDP	PA-O3A-PB	-2.67	123.67	132.83
3	C	1383	UDP	PA-O3A-PB	-2.64	123.77	132.83
3	A	1383	UDP	PA-O3A-PB	-2.63	123.81	132.83
3	C	1383	UDP	O4'-C1'-N1	2.32	113.67	108.36
2	D	1382	NAD	C3B-C2B-C1B	2.32	104.47	100.98
3	D	1383	UDP	O4'-C1'-N1	2.30	113.62	108.36
3	A	1383	UDP	O4'-C1'-N1	2.29	113.61	108.36
3	B	1383	UDP	O4'-C1'-N1	2.26	113.53	108.36
2	B	1382	NAD	C3B-C2B-C1B	2.25	104.37	100.98
2	B	1382	NAD	C4A-C5A-N7A	2.14	111.63	109.40
2	C	1382	NAD	C3B-C2B-C1B	2.12	104.17	100.98
2	C	1382	NAD	C3N-C2N-N1N	-2.11	118.36	120.43
2	A	1382	NAD	C4A-C5A-N7A	2.10	111.59	109.40
2	A	1382	NAD	C3B-C2B-C1B	2.10	104.14	100.98
2	D	1382	NAD	C1B-N9A-C4A	-2.09	122.97	126.64
2	A	1382	NAD	C3N-C2N-N1N	-2.07	118.41	120.43
2	C	1382	NAD	C4A-C5A-N7A	2.06	111.55	109.40
2	B	1382	NAD	C1B-N9A-C4A	-2.06	123.02	126.64
2	D	1382	NAD	C4A-C5A-N7A	2.02	111.50	109.40

There are no chirality outliers.

All (38) torsion outliers are listed below:

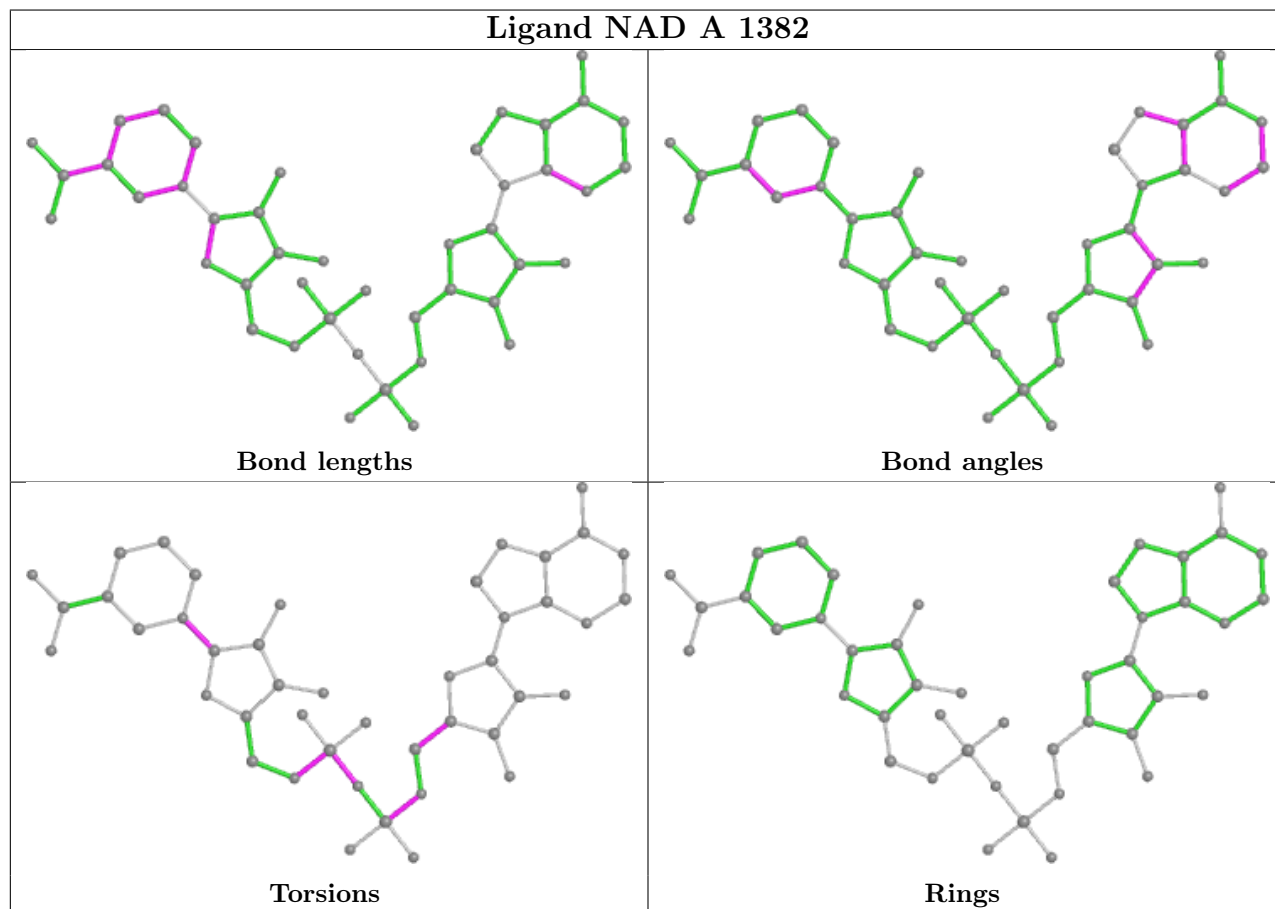
Mol	Chain	Res	Type	Atoms
2	A	1382	NAD	C5B-O5B-PA-O1A
2	A	1382	NAD	O4D-C1D-N1N-C2N
2	B	1382	NAD	C5B-O5B-PA-O1A
2	B	1382	NAD	O4D-C1D-N1N-C2N
2	C	1382	NAD	C5B-O5B-PA-O1A
2	C	1382	NAD	C5D-O5D-PN-O2N
2	C	1382	NAD	O4D-C1D-N1N-C2N
2	D	1382	NAD	C5B-O5B-PA-O1A
2	D	1382	NAD	O4D-C1D-N1N-C2N
3	A	1383	UDP	PB-O3A-PA-O5'
3	B	1383	UDP	PB-O3A-PA-O5'
3	C	1383	UDP	PB-O3A-PA-O5'
3	D	1383	UDP	PB-O3A-PA-O5'
2	A	1382	NAD	C5B-O5B-PA-O3
2	B	1382	NAD	C5B-O5B-PA-O3
2	C	1382	NAD	C5B-O5B-PA-O3
2	D	1382	NAD	C5B-O5B-PA-O3
2	A	1382	NAD	PA-O3-PN-O2N
2	B	1382	NAD	PA-O3-PN-O2N
2	C	1382	NAD	PA-O3-PN-O2N
2	D	1382	NAD	PA-O3-PN-O2N
2	B	1382	NAD	C5B-O5B-PA-O2A
2	C	1382	NAD	C5B-O5B-PA-O2A
2	D	1382	NAD	C5B-O5B-PA-O2A
2	A	1382	NAD	C5D-O5D-PN-O3
2	B	1382	NAD	C5D-O5D-PN-O3
2	C	1382	NAD	C5D-O5D-PN-O3
2	D	1382	NAD	C5D-O5D-PN-O3
2	A	1382	NAD	C5B-O5B-PA-O2A
2	A	1382	NAD	C5D-O5D-PN-O1N
2	B	1382	NAD	C5D-O5D-PN-O1N
2	B	1382	NAD	C5D-O5D-PN-O2N
2	C	1382	NAD	C5D-O5D-PN-O1N
2	D	1382	NAD	C5D-O5D-PN-O1N
2	A	1382	NAD	O4B-C4B-C5B-O5B
2	B	1382	NAD	O4B-C4B-C5B-O5B
2	C	1382	NAD	O4B-C4B-C5B-O5B
2	D	1382	NAD	O4B-C4B-C5B-O5B

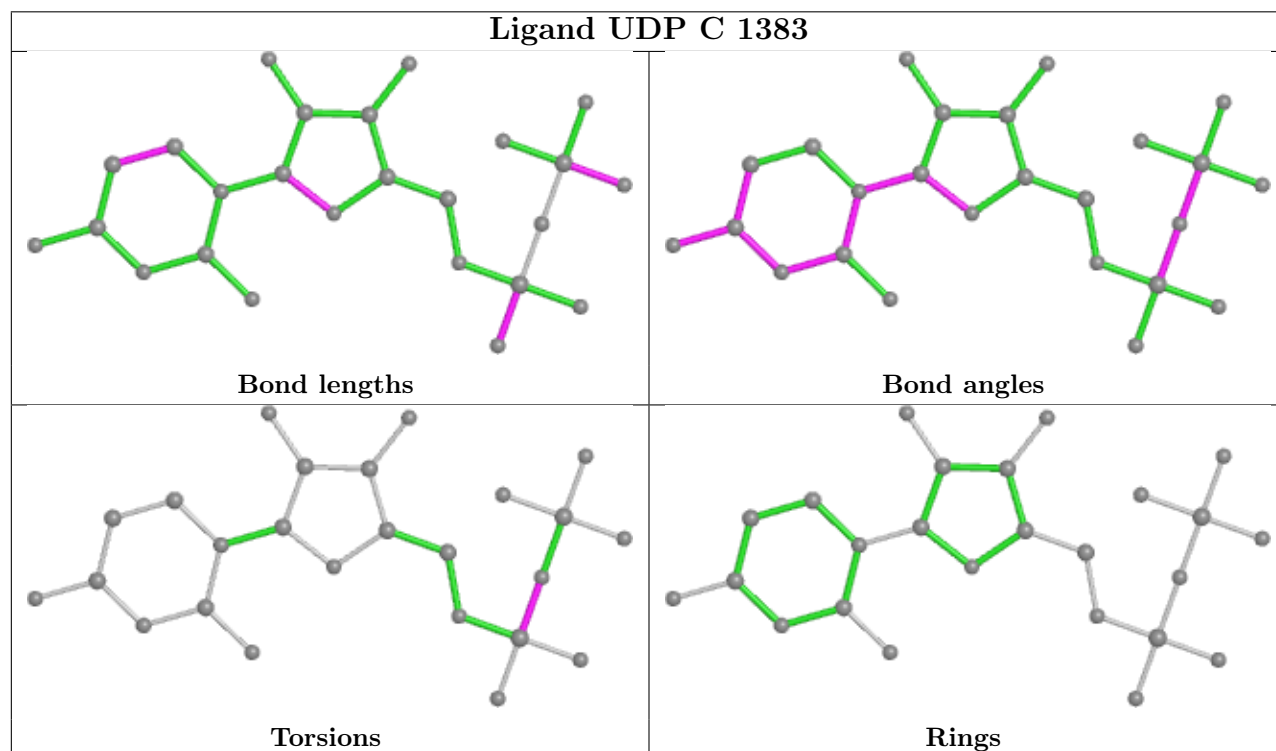
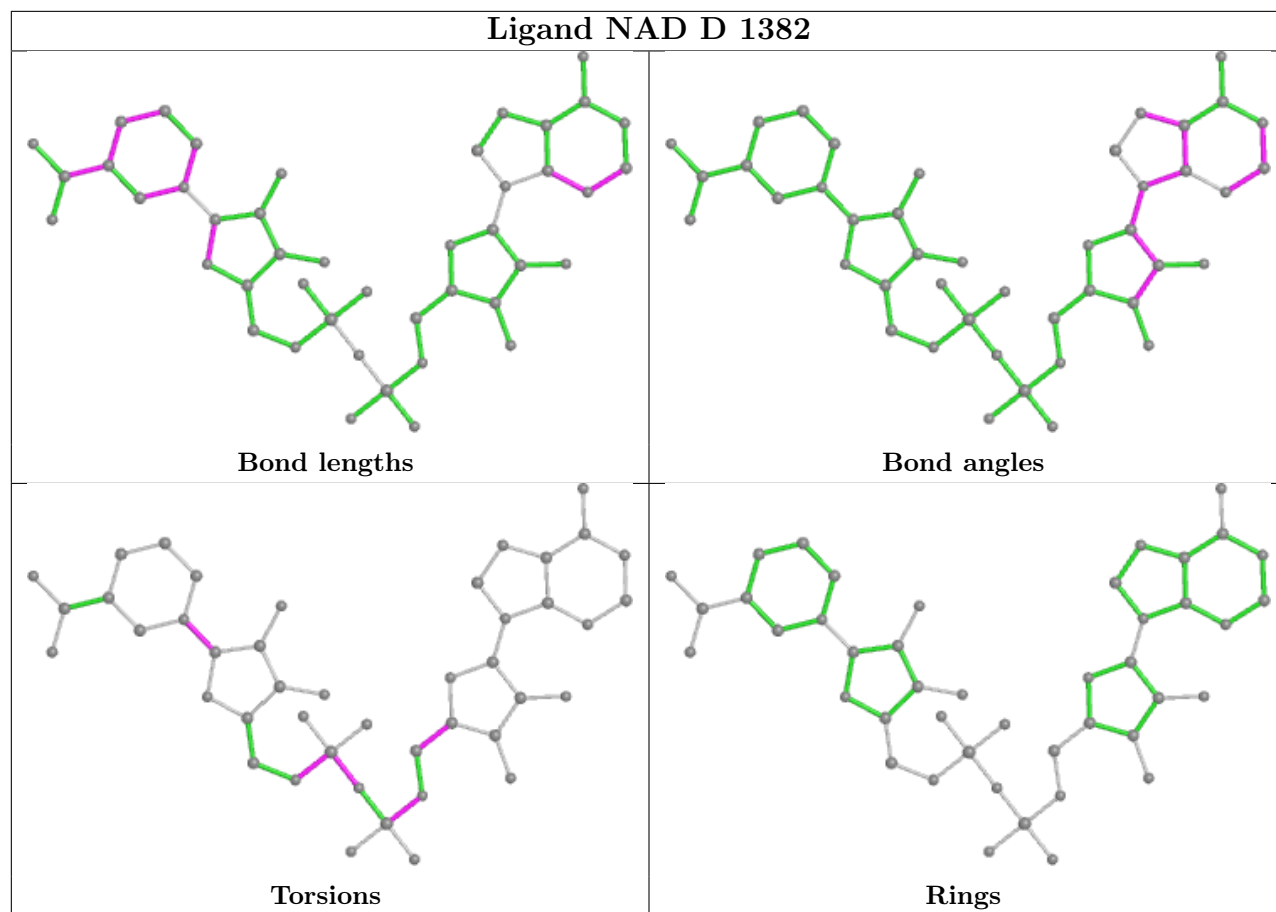
There are no ring outliers.

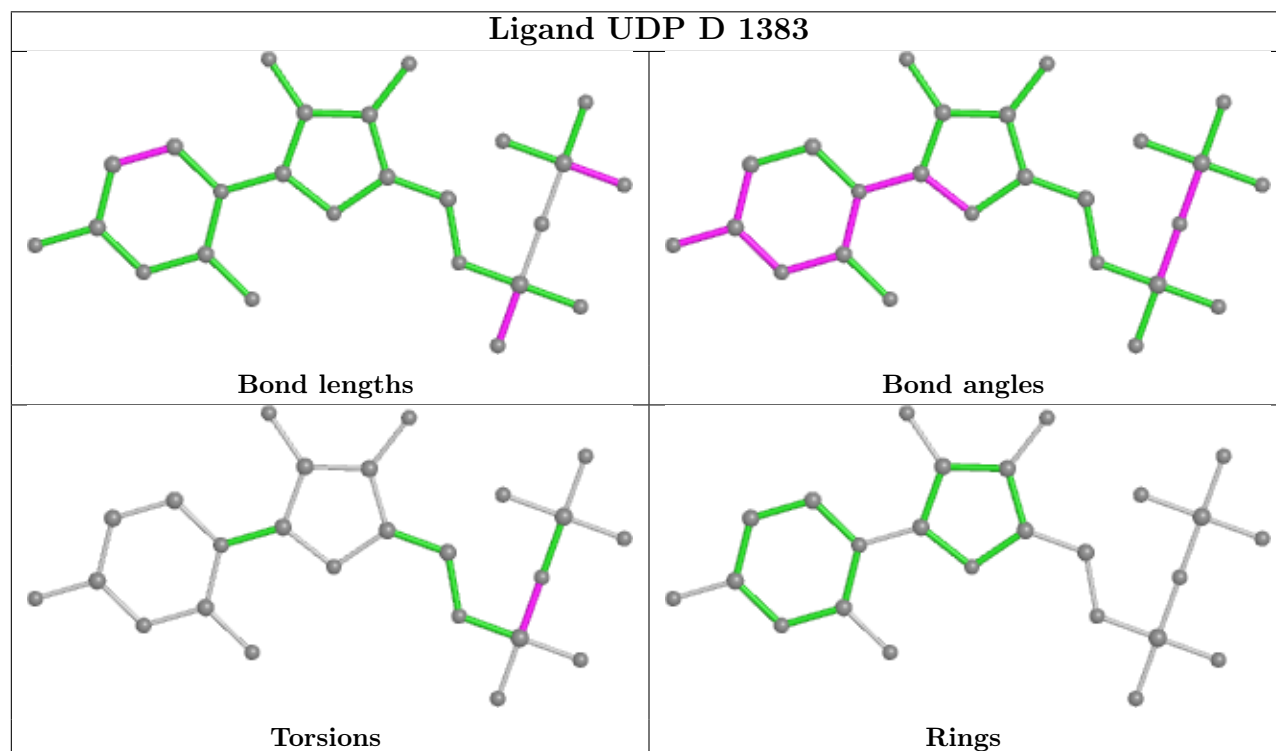
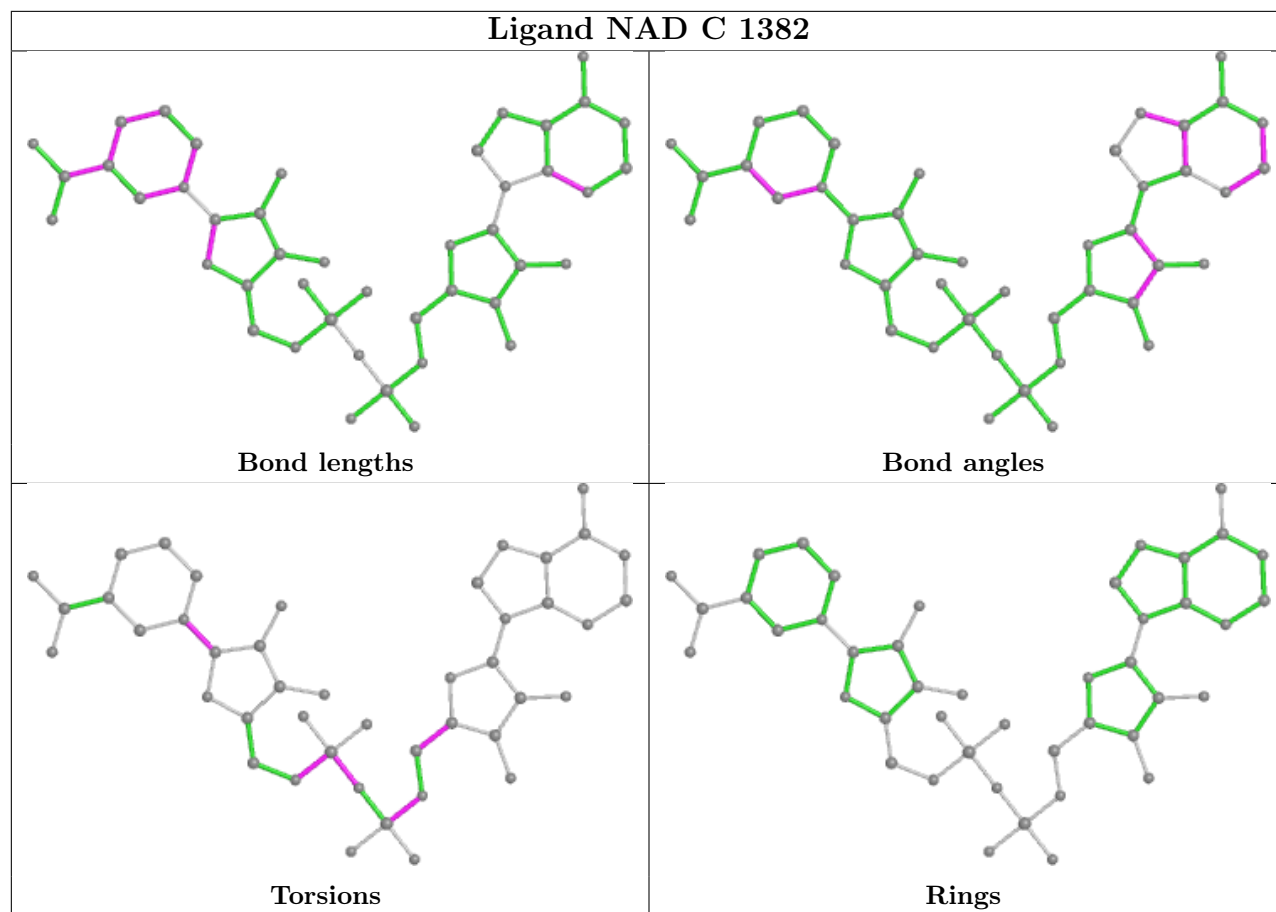
No monomer is involved in short contacts.

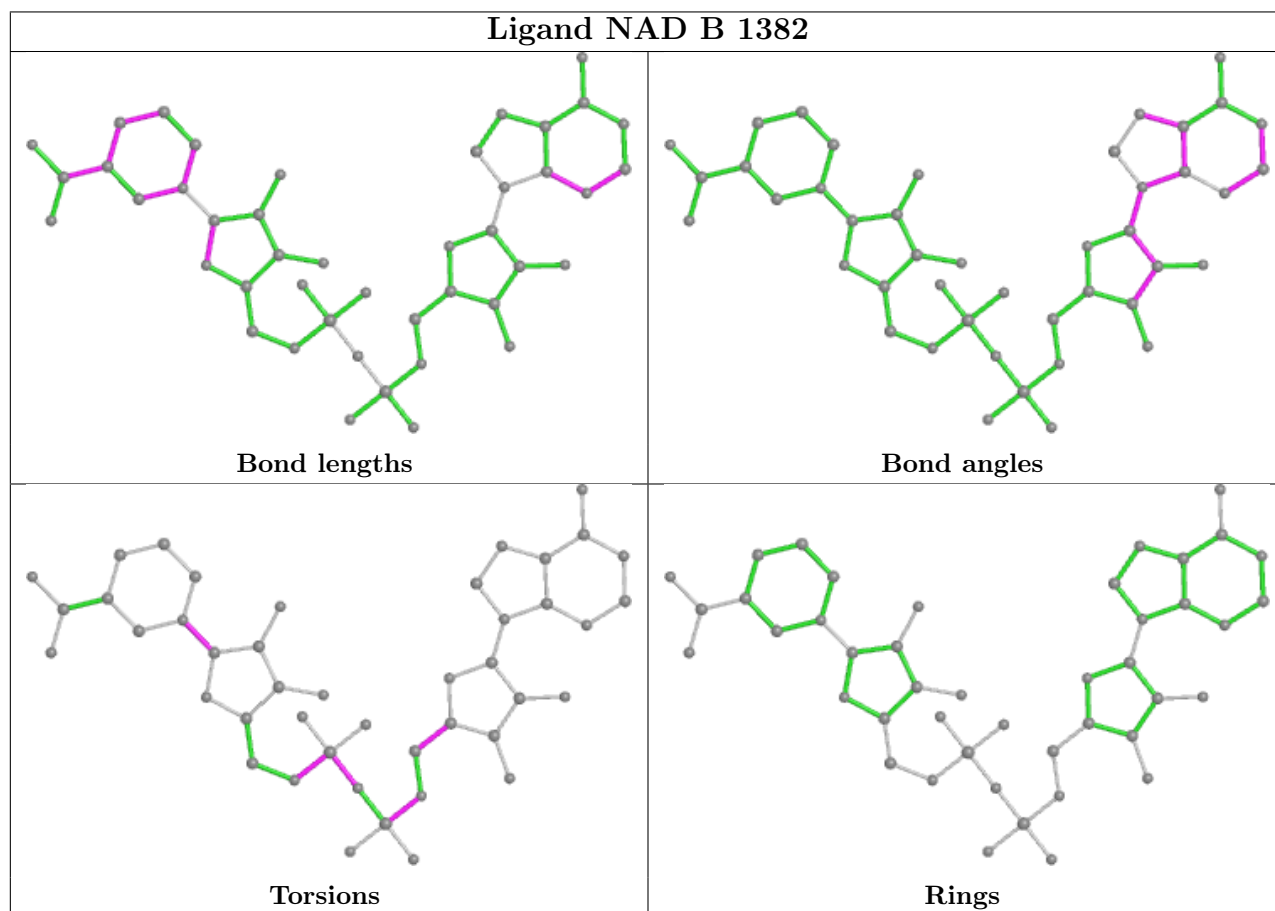
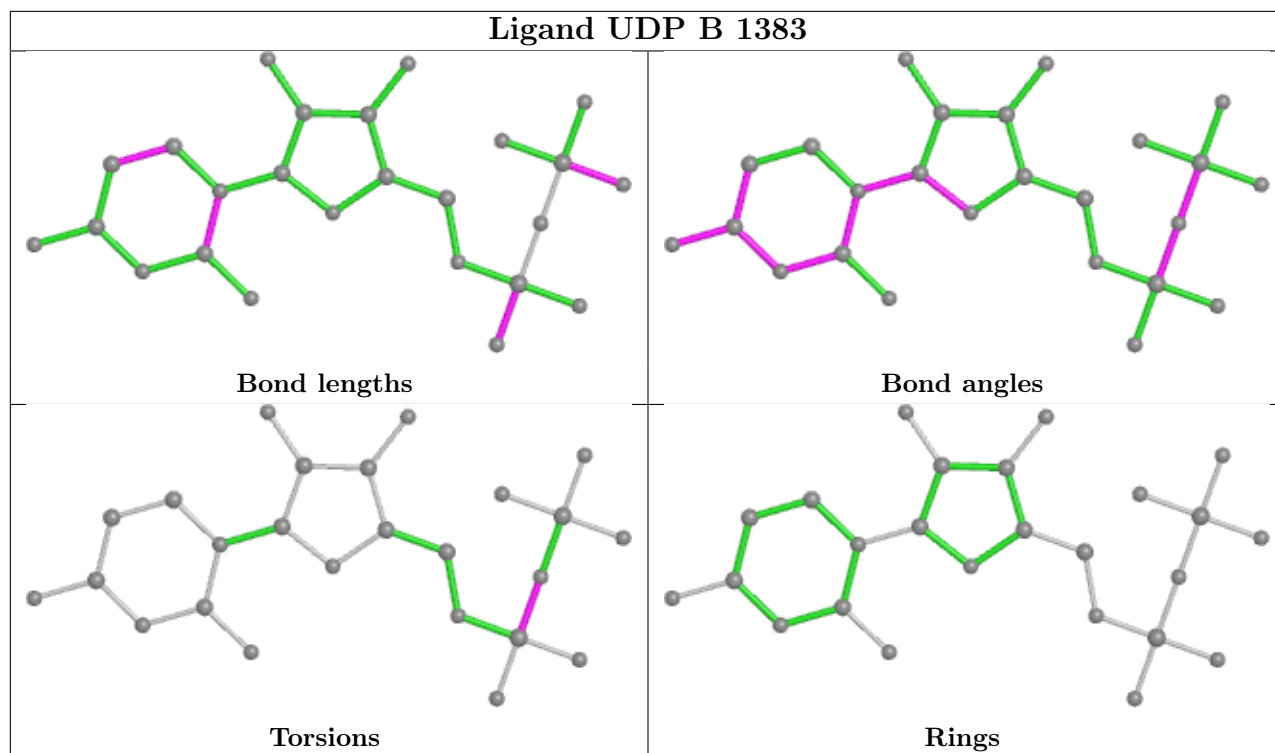
The following is a two-dimensional graphical depiction of Mogul quality analysis of bond lengths, bond angles, torsion angles, and ring geometry for all instances of the Ligand of Interest. In

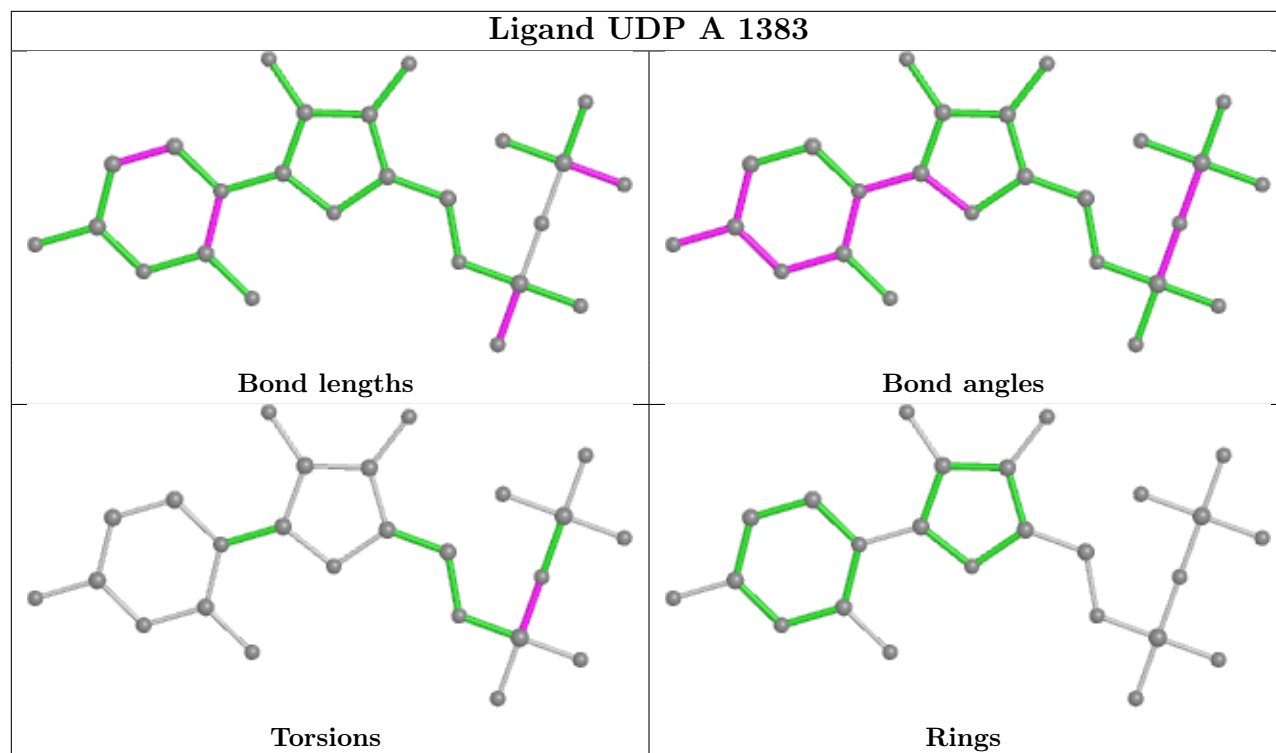
addition, ligands with molecular weight > 250 and outliers as shown on the validation Tables will also be included. For torsion angles, if less than 5% of the Mogul distribution of torsion angles is within 10 degrees of the torsion angle in question, then that torsion angle is considered an outlier. Any bond that is central to one or more torsion angles identified as an outlier by Mogul will be highlighted in the graph. For rings, the root-mean-square deviation (RMSD) between the ring in question and similar rings identified by Mogul is calculated over all ring torsion angles. If the average RMSD is greater than 60 degrees and the minimal RMSD between the ring in question and any Mogul-identified rings is also greater than 60 degrees, then that ring is considered an outlier. The outliers are highlighted in purple. The color gray indicates Mogul did not find sufficient equivalents in the CSD to analyse the geometry.











5.7 Other polymers [i](#)

There are no such residues in this entry.

5.8 Polymer linkage issues [i](#)

There are no chain breaks in this entry.

6 Fit of model and data

6.1 Protein, DNA and RNA chains

In the following table, the column labelled ‘#RSRZ > 2’ contains the number (and percentage) of RSRZ outliers, followed by percent RSRZ outliers for the chain as percentile scores relative to all X-ray entries and entries of similar resolution. The OWAB column contains the minimum, median, 95th percentile and maximum values of the occupancy-weighted average B-factor per residue. The column labelled ‘Q < 0.9’ lists the number of (and percentage) of residues with an average occupancy less than 0.9.

Mol	Chain	Analysed	<RSRZ>	#RSRZ>2	OWAB(Å ²)	Q<0.9
1	A	367/397 (92%)	0.09	19 (5%) 27 26	22, 30, 57, 85	2 (0%)
1	B	366/397 (92%)	0.04	12 (3%) 46 45	21, 31, 51, 82	3 (0%)
1	C	370/397 (93%)	0.18	19 (5%) 28 27	20, 30, 53, 76	3 (0%)
1	D	364/397 (91%)	0.18	15 (4%) 37 36	23, 33, 53, 73	3 (0%)
All	All	1467/1588 (92%)	0.12	65 (4%) 34 33	20, 31, 54, 85	11 (0%)

All (65) RSRZ outliers are listed below:

Mol	Chain	Res	Type	RSRZ
1	B	157	ASN	7.5
1	C	150	THR	7.1
1	D	157	ASN	6.7
1	C	237	ASP	6.7
1	B	381	ALA	6.5
1	A	56	GLN	6.3
1	A	237	ASP	6.0
1	A	150	THR	5.7
1	B	156	THR	5.4
1	B	0	HIS	5.2
1	A	151	MET	4.9
1	D	381	ALA	4.8
1	B	151	MET	4.8
1	C	157	ASN	4.8
1	C	236	PRO	4.3
1	C	60	PRO	4.2
1	A	58	ASP	4.2
1	C	151	MET	4.2
1	A	54	LEU	4.2
1	B	235	ALA	4.1
1	C	-1	SER	3.9

Continued on next page...

Continued from previous page...

Mol	Chain	Res	Type	RSRZ
1	A	157	ASN	3.9
1	A	60	PRO	3.7
1	A	250	LYS	3.6
1	D	235	ALA	3.6
1	C	248	THR	3.6
1	C	246	ALA	3.5
1	A	57	SER	3.4
1	C	59	GLY	3.4
1	A	249	ASP	3.2
1	A	294	ASP	3.2
1	C	333	GLY	3.2
1	C	56	GLN	3.2
1	C	247	SER	3.2
1	D	-1	SER	3.0
1	D	25	ASN	3.0
1	B	-1	SER	2.9
1	B	25	ASN	2.9
1	C	258	ASP	2.9
1	D	87	THR	2.8
1	D	133	LYS	2.8
1	D	249	ASP	2.8
1	A	52	ARG	2.7
1	B	234	ILE	2.7
1	D	48	GLU	2.7
1	A	328	PRO	2.7
1	D	294	ASP	2.6
1	B	330	ARG	2.6
1	A	381	ALA	2.5
1	C	158	ALA	2.5
1	B	52	ARG	2.5
1	C	336	GLU	2.4
1	C	293	ASN	2.4
1	C	381	ALA	2.4
1	D	56	GLN	2.4
1	C	341	TYR	2.4
1	D	192	GLY	2.3
1	A	230	VAL	2.2
1	A	59	GLY	2.2
1	D	0	HIS	2.2
1	A	-1	SER	2.1
1	D	52	ARG	2.1
1	A	55	GLN	2.1

Continued on next page...

Continued from previous page...

Mol	Chain	Res	Type	RSRZ
1	D	289	LYS	2.0
1	B	249	ASP	2.0

6.2 Non-standard residues in protein, DNA, RNA chains [i](#)

There are no non-standard protein/DNA/RNA residues in this entry.

6.3 Carbohydrates [i](#)

There are no monosaccharides in this entry.

6.4 Ligands [i](#)

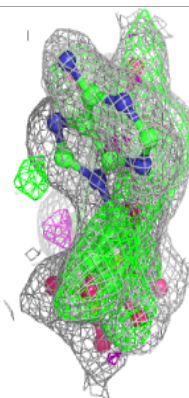
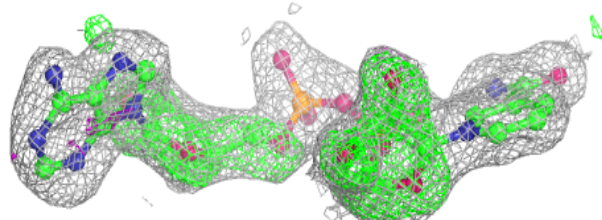
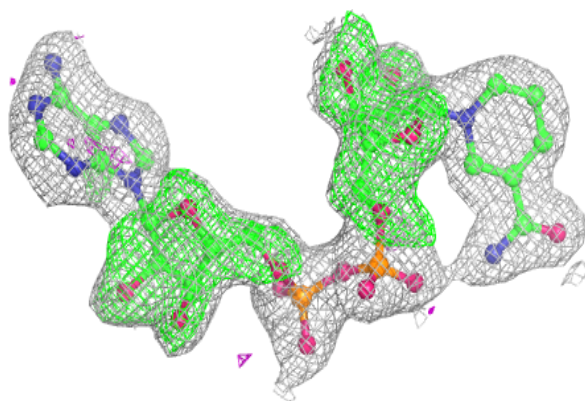
In the following table, the Atoms column lists the number of modelled atoms in the group and the number defined in the chemical component dictionary. The B-factors column lists the minimum, median, 95th percentile and maximum values of B factors of atoms in the group. The column labelled 'Q< 0.9' lists the number of atoms with occupancy less than 0.9.

Mol	Type	Chain	Res	Atoms	RSCC	RSR	B-factors(\AA^2)	Q<0.9
2	NAD	D	1382	44/44	0.82	0.23	24,27,28,29	18
2	NAD	B	1382	44/44	0.86	0.22	22,24,26,26	18
2	NAD	A	1382	44/44	0.87	0.23	21,23,24,26	18
2	NAD	C	1382	44/44	0.89	0.23	21,23,25,25	18
3	UDP	C	1383	25/25	0.94	0.13	28,29,31,34	0
3	UDP	A	1383	25/25	0.96	0.10	24,28,30,31	0
3	UDP	D	1383	25/25	0.97	0.11	24,27,29,31	0
3	UDP	B	1383	25/25	0.98	0.11	23,27,29,30	0

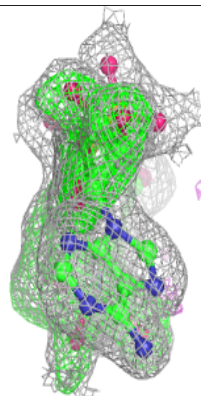
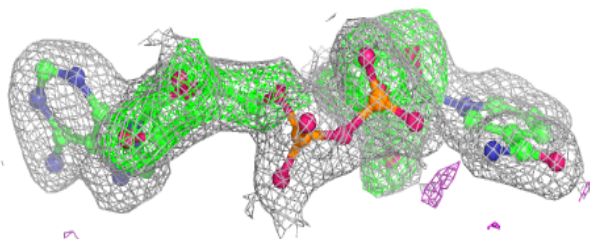
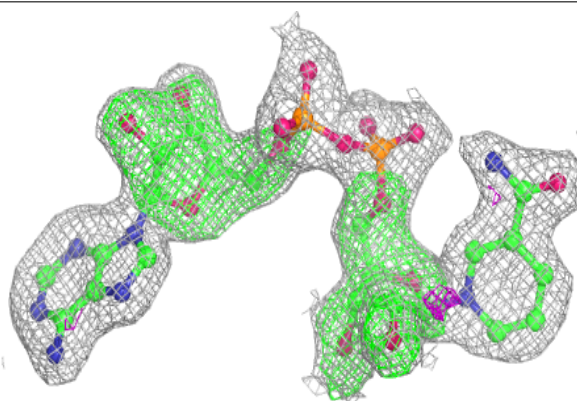
The following is a graphical depiction of the model fit to experimental electron density of all instances of the Ligand of Interest. In addition, ligands with molecular weight > 250 and outliers as shown on the geometry validation Tables will also be included. Each fit is shown from different orientation to approximate a three-dimensional view.

Electron density around NAD D 1382:

$2mF_o-DF_c$ (at 0.7 rmsd) in gray
 mF_o-DF_c (at 3 rmsd) in purple (negative)
and green (positive)

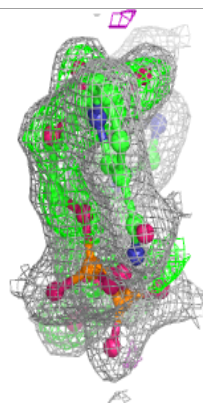
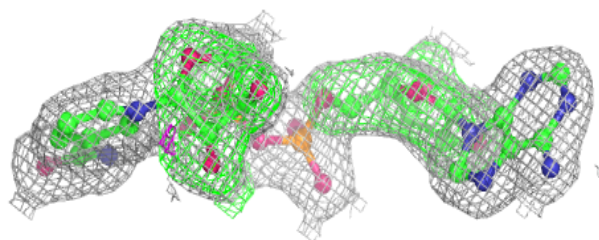
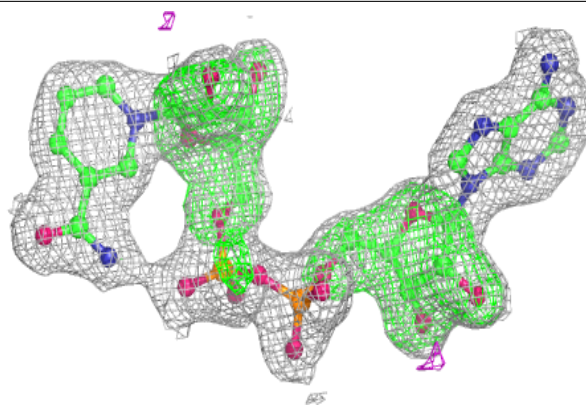
**Electron density around NAD B 1382:**

$2mF_o-DF_c$ (at 0.7 rmsd) in gray
 mF_o-DF_c (at 3 rmsd) in purple (negative)
and green (positive)

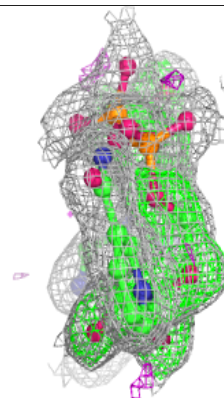
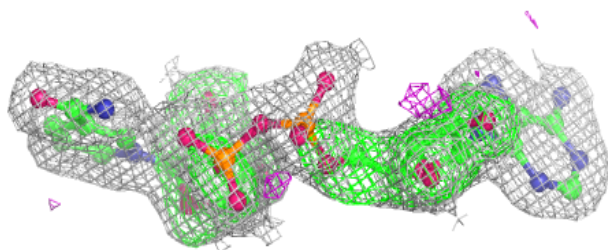
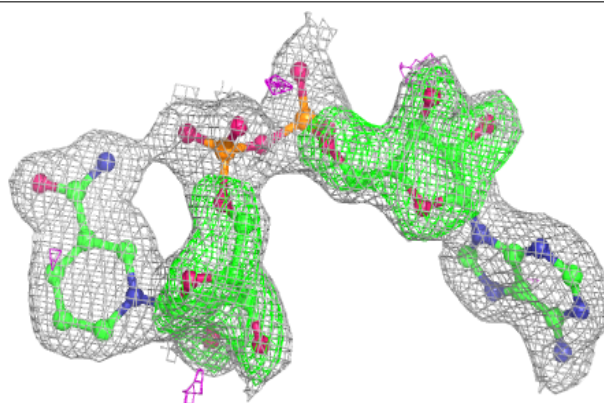


Electron density around NAD A 1382:

$2mF_o-DF_c$ (at 0.7 rmsd) in gray
 mF_o-DF_c (at 3 rmsd) in purple (negative)
and green (positive)

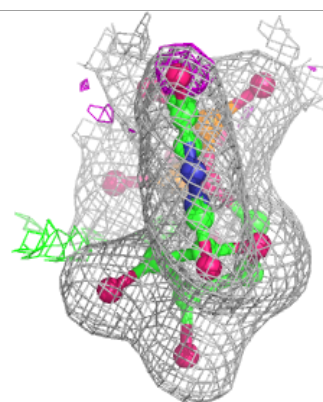
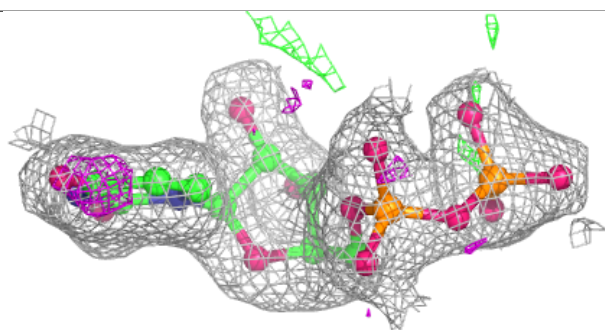
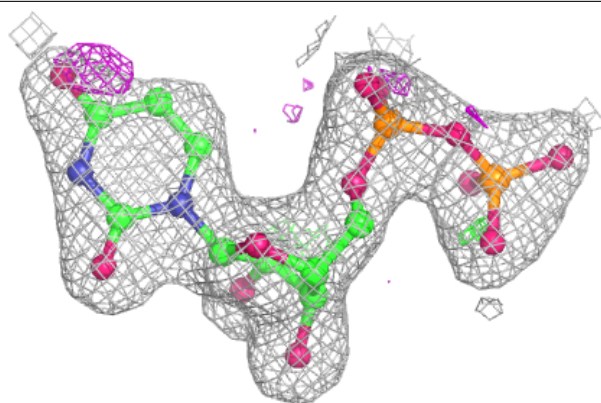
**Electron density around NAD C 1382:**

$2mF_o-DF_c$ (at 0.7 rmsd) in gray
 mF_o-DF_c (at 3 rmsd) in purple (negative)
and green (positive)

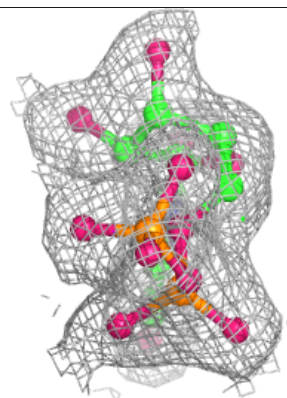
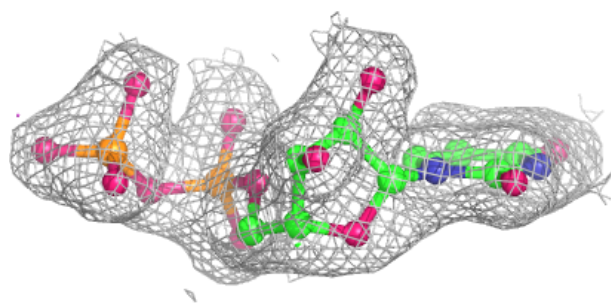
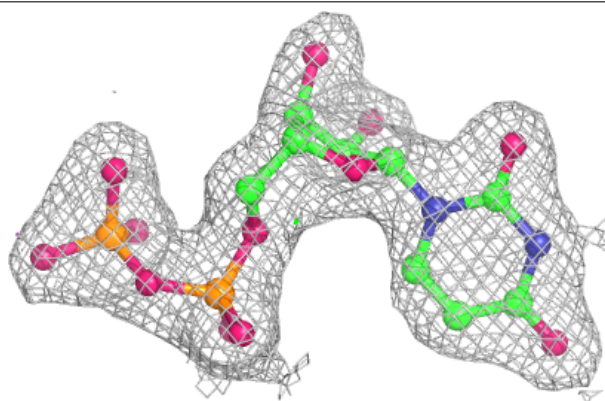


Electron density around UDP C 1383:

$2mF_o-DF_c$ (at 0.7 rmsd) in gray
 mF_o-DF_c (at 3 rmsd) in purple (negative)
and green (positive)

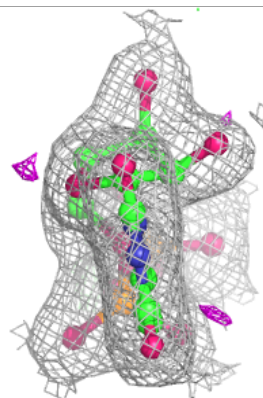
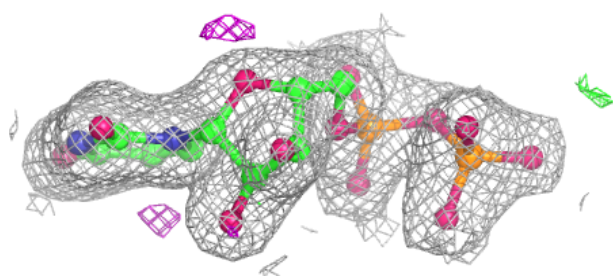
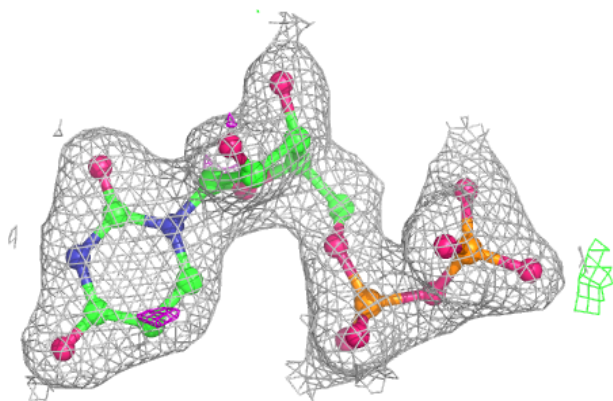
**Electron density around UDP A 1383:**

$2mF_o-DF_c$ (at 0.7 rmsd) in gray
 mF_o-DF_c (at 3 rmsd) in purple (negative)
and green (positive)

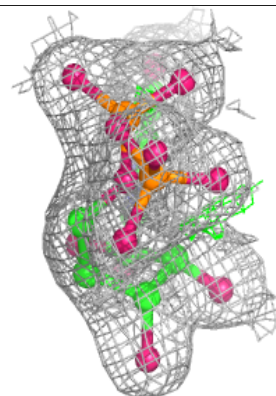
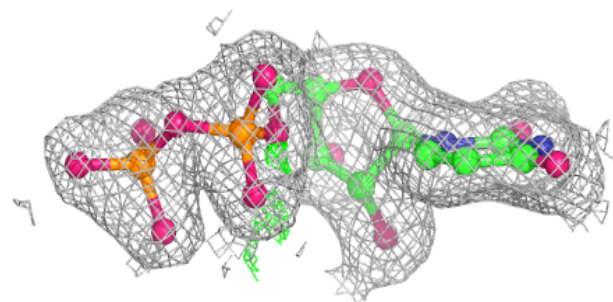
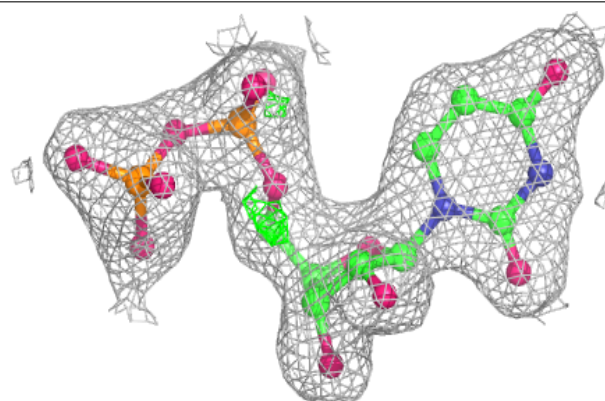


Electron density around UDP D 1383:

$2mF_o-DF_c$ (at 0.7 rmsd) in gray
 mF_o-DF_c (at 3 rmsd) in purple (negative)
and green (positive)

**Electron density around UDP B 1383:**

$2mF_o-DF_c$ (at 0.7 rmsd) in gray
 mF_o-DF_c (at 3 rmsd) in purple (negative)
and green (positive)



6.5 Other polymers [i](#)

There are no such residues in this entry.