



Full wwPDB X-ray Structure Validation Report ⓘ

Aug 25, 2020 – 02:27 PM BST

PDB ID : 4H44
Title : 2.70 Å Cytochrome b6f Complex Structure From Nostoc PCC 7120
Authors : Hasan, S.S.; Yamashita, E.; Baniulis, D.; Cramer, W.A.
Deposited on : 2012-09-16
Resolution : 2.70 Å(reported)

This is a Full wwPDB X-ray Structure Validation Report for a publicly released PDB entry.

We welcome your comments at validation@mail.wwpdb.org

A user guide is available at

<https://www.wwpdb.org/validation/2017/XrayValidationReportHelp>

with specific help available everywhere you see the ⓘ symbol.

The following versions of software and data (see [references ⓘ](#)) were used in the production of this report:

MolProbity : 4.02b-467
Mogul : 1.8.5 (274361), CSD as541be (2020)
Xtriage (Phenix) : 1.13
EDS : 2.13
buster-report : 1.1.7 (2018)
Percentile statistics : 20191225.v01 (using entries in the PDB archive December 25th 2019)
Refmac : 5.8.0158
CCP4 : 7.0.044 (Gargrove)
Ideal geometry (proteins) : Engh & Huber (2001)
Ideal geometry (DNA, RNA) : Parkinson et al. (1996)
Validation Pipeline (wwPDB-VP) : 2.13

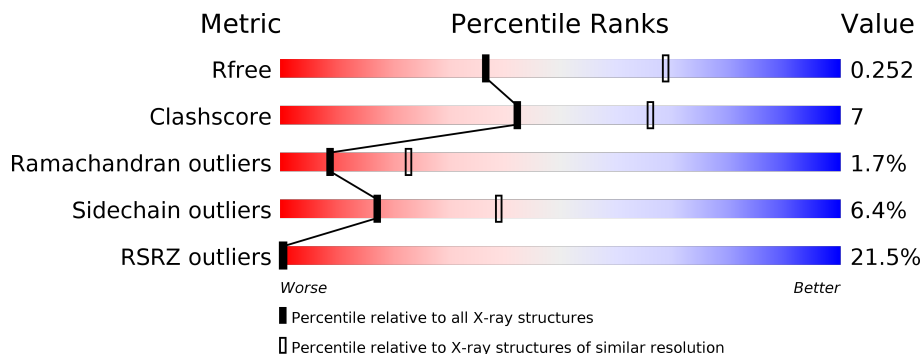
1 Overall quality at a glance

The following experimental techniques were used to determine the structure:

X-RAY DIFFRACTION

The reported resolution of this entry is 2.70 Å.

Percentile scores (ranging between 0-100) for global validation metrics of the entry are shown in the following graphic. The table shows the number of entries on which the scores are based.



Metric	Whole archive (#Entries)	Similar resolution (#Entries, resolution range(Å))
R_{free}	130704	2808 (2.70-2.70)
Clashscore	141614	3122 (2.70-2.70)
Ramachandran outliers	138981	3069 (2.70-2.70)
Sidechain outliers	138945	3069 (2.70-2.70)
RSRZ outliers	127900	2737 (2.70-2.70)

The table below summarises the geometric issues observed across the polymeric chains and their fit to the electron density. The red, orange, yellow and green segments on the lower bar indicate the fraction of residues that contain outliers for ≥ 3 , 2, 1 and 0 types of geometric quality criteria respectively. A grey segment represents the fraction of residues that are not modelled. The numeric value for each fraction is indicated below the corresponding segment, with a dot representing fractions $\leq 5\%$. The upper red bar (where present) indicates the fraction of residues that have poor fit to the electron density. The numeric value is given above the bar.

Mol	Chain	Length	Quality of chain
1	A	215	 13% 82% 16% •
2	B	160	 18% 80% 19% •
3	C	289	 21% 79% 19% •
4	D	179	 40% 83% 9% • 7%
5	E	31	 13% 87% 13%
6	F	34	 3% 85% 9% 6%

Continued on next page...

Continued from previous page...

Mol	Chain	Length	Quality of chain
7	G	37	
8	H	29	

The following table lists non-polymeric compounds, carbohydrate monomers and non-standard residues in protein, DNA, RNA chains that are outliers for geometric or electron-density-fit criteria:

Mol	Type	Chain	Res	Chirality	Geometry	Clashes	Electron density
10	UMQ	A	304	X	-	-	X
10	UMQ	A	305	X	-	-	-
10	UMQ	A	307	X	-	-	-
10	UMQ	A	309	X	-	-	X
10	UMQ	F	101	X	-	-	-
13	CLA	B	201	X	-	-	-
14	OPC	C	302	-	-	-	X
16	CD	C	304	-	-	-	X

2 Entry composition [i](#)

There are 21 unique types of molecules in this entry. The entry contains 16386 atoms, of which 8258 are hydrogens and 0 are deuteriums.

In the tables below, the ZeroOcc column contains the number of atoms modelled with zero occupancy, the AltConf column contains the number of residues with at least one atom in alternate conformation and the Trace column contains the number of residues modelled with at most 2 atoms.

- Molecule 1 is a protein called Cytochrome b6.

Mol	Chain	Residues	Atoms						ZeroOcc	AltConf	Trace
			Total	C	H	N	O	S			
1	A	215	3451	1144	1736	272	288	11	0	0	0

- Molecule 2 is a protein called Cytochrome b6-f complex subunit 4.

Mol	Chain	Residues	Atoms						ZeroOcc	AltConf	Trace
			Total	C	H	N	O	S			
2	B	160	2531	830	1292	195	208	6	0	0	0

- Molecule 3 is a protein called Apocytochrome f.

Mol	Chain	Residues	Atoms						ZeroOcc	AltConf	Trace
			Total	C	H	N	O	S			
3	C	289	4379	1396	2184	364	429	6	0	0	0

- Molecule 4 is a protein called Cytochrome b6-f complex iron-sulfur subunit 1.

Mol	Chain	Residues	Atoms						ZeroOcc	AltConf	Trace
			Total	C	H	N	O	S			
4	D	166	2459	791	1210	213	239	6	0	0	0

- Molecule 5 is a protein called Cytochrome b6-f complex subunit 6.

Mol	Chain	Residues	Atoms						ZeroOcc	AltConf	Trace
			Total	C	H	N	O	S			
5	E	31	484	157	257	35	34	1	0	0	0

- Molecule 6 is a protein called Cytochrome b6-f complex subunit 7.

Mol	Chain	Residues	Atoms						ZeroOcc	AltConf	Trace
			Total	C	H	N	O	S			
6	F	32	483	156	252	36	38	1	0	0	0

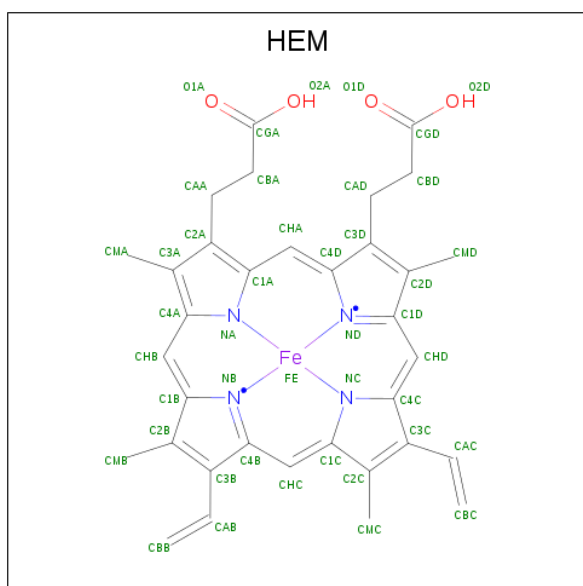
- Molecule 7 is a protein called Cytochrome b6-f complex subunit 5.

Mol	Chain	Residues	Atoms					ZeroOcc	AltConf	Trace	
			Total	C	H	N	O				S
7	G	37	Total	C	H	N	O	S	0	0	0
			584	188	303	44	48	1			

- Molecule 8 is a protein called Cytochrome b6-f complex subunit 8.

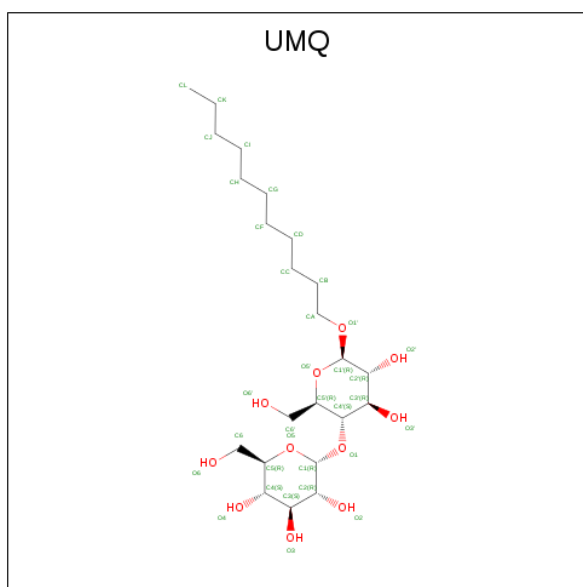
Mol	Chain	Residues	Atoms					ZeroOcc	AltConf	Trace	
			Total	C	H	N	O				S
8	H	29	Total	C	H	N	O	S	0	0	0
			470	155	243	36	34	2			

- Molecule 9 is PROTOPORPHYRIN IX CONTAINING FE (three-letter code: HEM) (formula: $C_{34}H_{32}FeN_4O_4$).



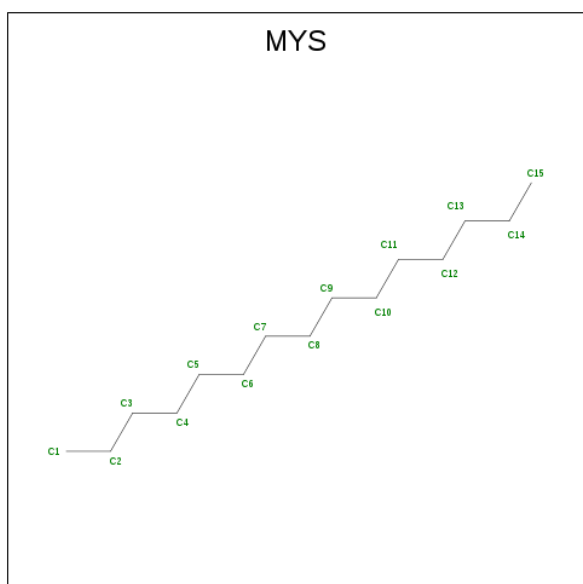
Mol	Chain	Residues	Atoms					ZeroOcc	AltConf	
			Total	C	Fe	H	N			O
9	A	1	Total	C	Fe	H	N	O	0	0
			73	34	1	30	4	4		
9	A	1	Total	C	Fe	H	N	O	0	0
			73	34	1	30	4	4		
9	A	1	Total	C	Fe	H	N	O	0	0
			73	34	1	30	4	4		
9	C	1	Total	C	Fe	H	N	O	0	0
			73	34	1	30	4	4		

- Molecule 10 is UNDECYL-MALTOSIDE (three-letter code: UMQ) (formula: $C_{23}H_{44}O_{11}$).



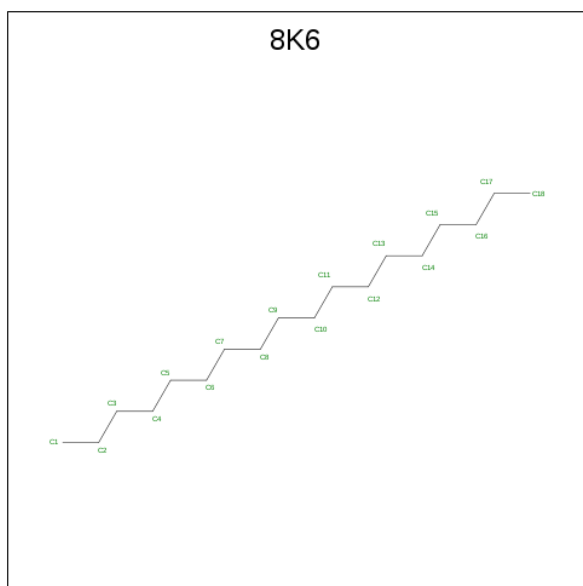
Mol	Chain	Residues	Atoms				ZeroOcc	AltConf
10	A	1	Total	C	H	O	0	0
			77	23	43	11		
10	A	1	Total	C	H	O	0	0
			77	23	43	11		
10	A	1	Total	C	H	O	0	0
			78	23	44	11		
10	A	1	Total	C	H	O	0	0
			77	23	43	11		
10	F	1	Total	C	H	O	0	0
			77	23	43	11		

- Molecule 11 is PENTADECANE (three-letter code: MYS) (formula: $C_{15}H_{32}$).



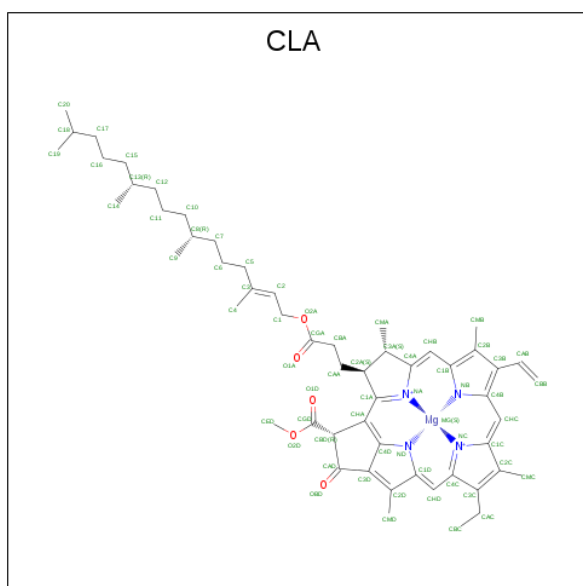
Mol	Chain	Residues	Atoms			ZeroOcc	AltConf
11	A	1	Total	C	H	0	0
			47	15	32		

- Molecule 12 is Octadecane (three-letter code: 8K6) (formula: $C_{18}H_{38}$).



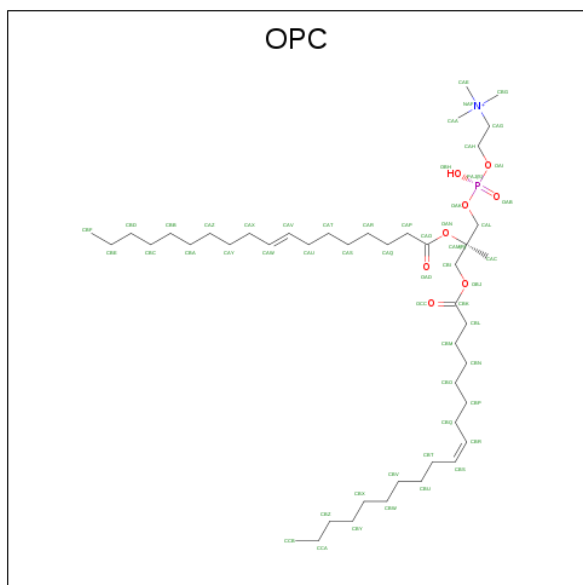
Mol	Chain	Residues	Atoms			ZeroOcc	AltConf
12	A	1	Total	C	H	0	0
			56	18	38		

- Molecule 13 is CHLOROPHYLL A (three-letter code: CLA) (formula: $C_{55}H_{72}MgN_4O_5$).



Mol	Chain	Residues	Atoms					ZeroOcc	AltConf	
			Total	C	H	Mg	N			O
13	B	1	127	55	62	1	4	5	0	0

- Molecule 14 is (7R,17E)-4-HYDROXY-N,N,N,7-TETRAMETHYL-7-[(8E)-OCTADEC-8-ENOYLOXY]-10-OXO-3,5,9-TRIOXA-4-PHOSPHAHEPTACOS-17-EN-1-AMINIUM 4-OXIDE (three-letter code: OPC) (formula: C₄₅H₈₇NO₈P).



Mol	Chain	Residues	Atoms					ZeroOcc	AltConf	
			Total	C	H	N	O			P
14	B	1	137	44	83	1	8	1	0	0
14	C	1	137	44	83	1	8	1	0	0

- Molecule 15 is (1R)-2-(dodecanoyloxy)-1-[(phosphonoxy)methyl]ethyl tetradecanoate (three-letter code: 7PH) (formula: C₂₉H₅₇O₈P).

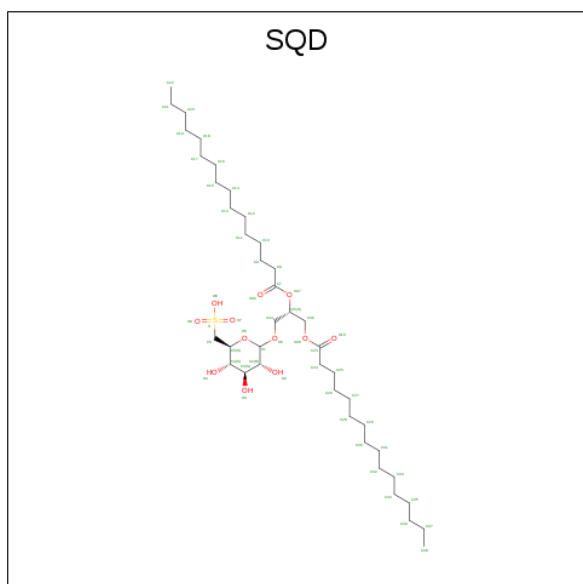


Mol	Chain	Residues	Atoms				ZeroOcc	AltConf
			Total	C	H	O		
15	C	1	81	27	49	5	0	0

- Molecule 16 is CADMIUM ION (three-letter code: CD) (formula: Cd).

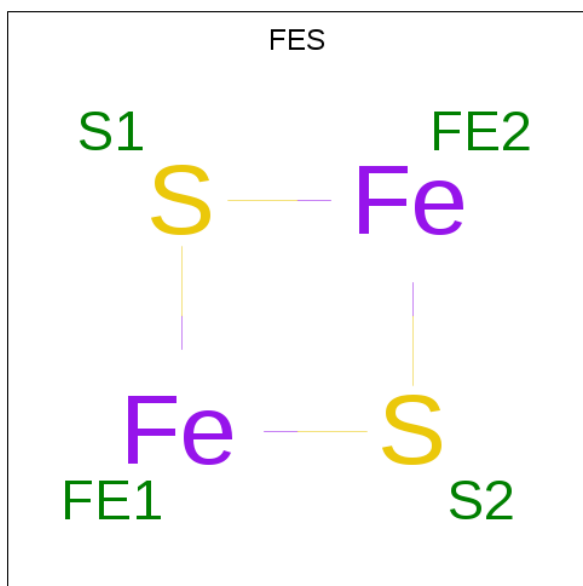
Mol	Chain	Residues	Atoms		ZeroOcc	AltConf
			Total	Cd		
16	C	1	1	1	0	0

- Molecule 17 is 1,2-DI-O-ACYL-3-O-[6-DEOXY-6-SULFO-ALPHA-D-GLUCOPYRANOSYL]-SN-GLYCEROL (three-letter code: SQD) (formula: C₄₁H₇₈O₁₂S).



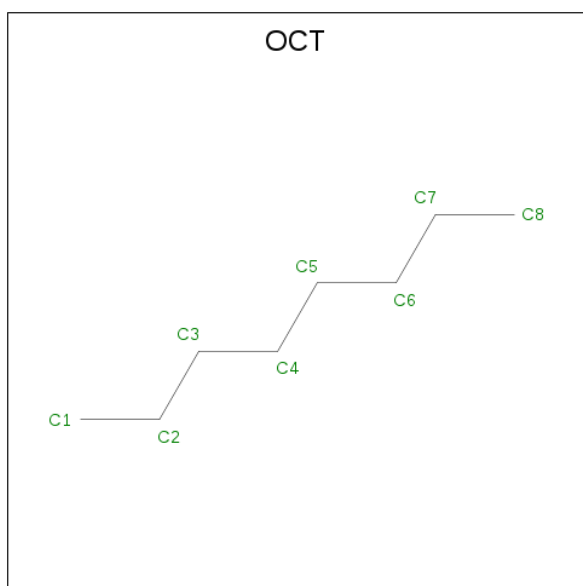
Mol	Chain	Residues	Atoms					ZeroOcc	AltConf
			Total	C	H	O	S		
17	D	1	53	16	24	12	1	0	0

- Molecule 18 is FE2/S2 (INORGANIC) CLUSTER (three-letter code: FES) (formula: Fe₂S₂).



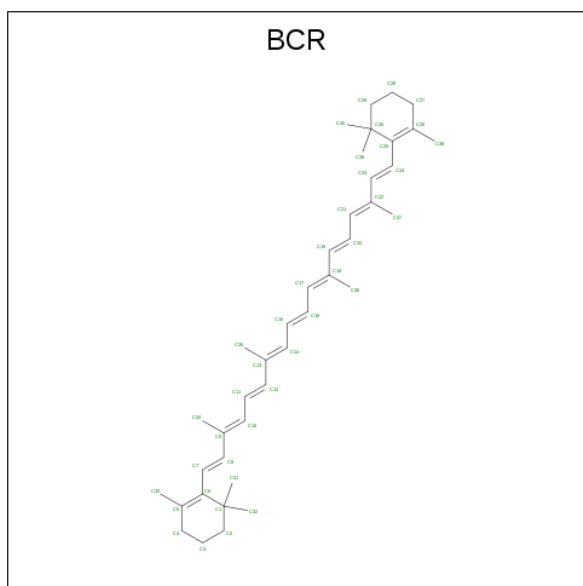
Mol	Chain	Residues	Atoms			ZeroOcc	AltConf
			Total	Fe	S		
18	D	1	4	2	2	0	0

- Molecule 19 is N-OCTANE (three-letter code: OCT) (formula: C₈H₁₈).



Mol	Chain	Residues	Atoms			ZeroOcc	AltConf
19	F	1	Total	C	H	0	0
			26	8	18		

- Molecule 20 is BETA-CAROTENE (three-letter code: BCR) (formula: $C_{40}H_{56}$).



Mol	Chain	Residues	Atoms			ZeroOcc	AltConf
20	G	1	Total	C	H	0	0
			96	40	56		

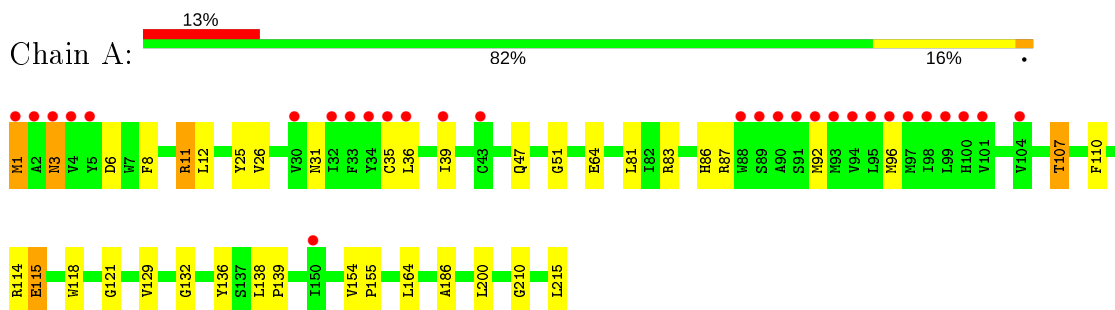
- Molecule 21 is water.

Mol	Chain	Residues	Atoms		ZeroOcc	AltConf
21	A	26	Total	O	0	0
			26	26		
21	B	22	Total	O	0	0
			22	22		
21	C	45	Total	O	0	0
			45	45		
21	D	1	Total	O	0	0
			1	1		
21	G	5	Total	O	0	0
			5	5		
21	H	3	Total	O	0	0
			3	3		

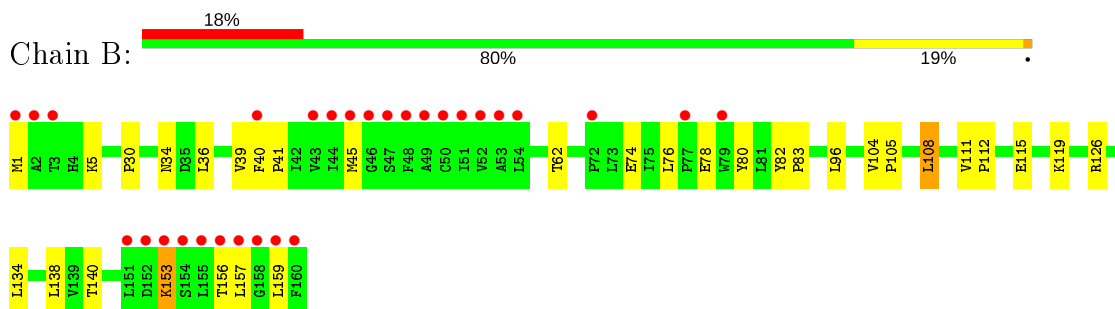
3 Residue-property plots [i](#)

These plots are drawn for all protein, RNA, DNA and oligosaccharide chains in the entry. The first graphic for a chain summarises the proportions of the various outlier classes displayed in the second graphic. The second graphic shows the sequence view annotated by issues in geometry and electron density. Residues are color-coded according to the number of geometric quality criteria for which they contain at least one outlier: green = 0, yellow = 1, orange = 2 and red = 3 or more. A red dot above a residue indicates a poor fit to the electron density ($RSRZ > 2$). Stretches of 2 or more consecutive residues without any outlier are shown as a green connector. Residues present in the sample, but not in the model, are shown in grey.

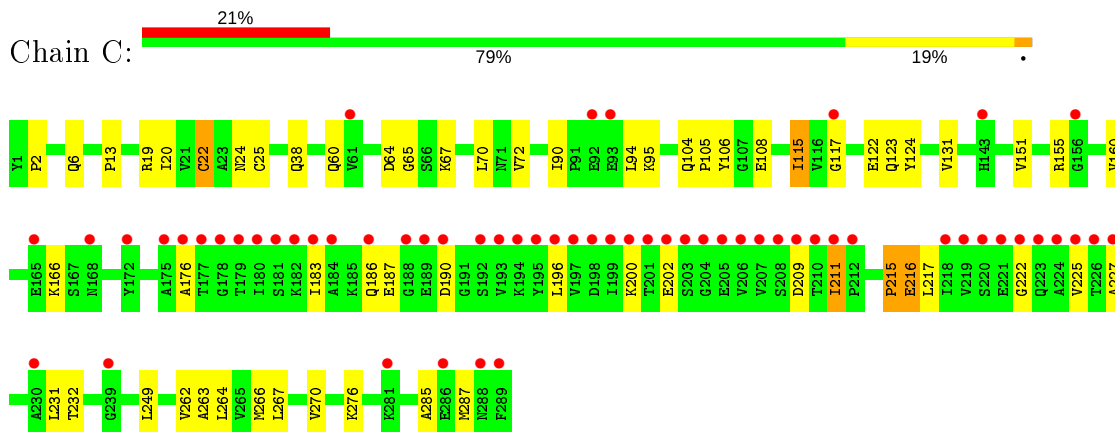
- Molecule 1: Cytochrome b6




- Molecule 2: Cytochrome b6-f complex subunit 4

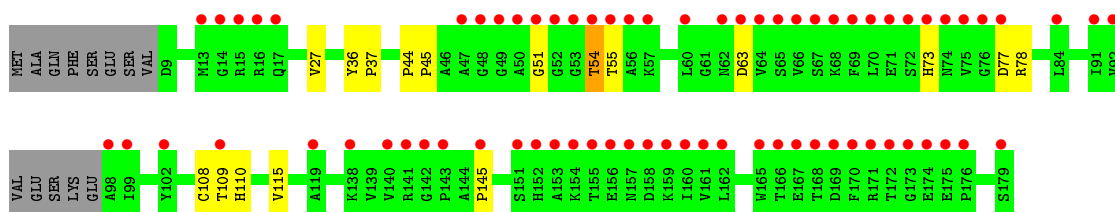


- Molecule 3: Apocytochrome f




- Molecule 4: Cytochrome b6-f complex iron-sulfur subunit 1

Chain D: 




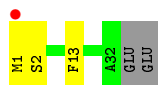
- Molecule 5: Cytochrome b6-f complex subunit 6

Chain E: 




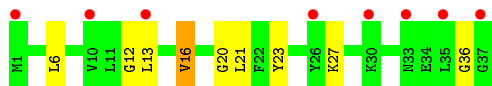
- Molecule 6: Cytochrome b6-f complex subunit 7

Chain F: 




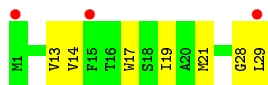
- Molecule 7: Cytochrome b6-f complex subunit 5

Chain G: 



- Molecule 8: Cytochrome b6-f complex subunit 8

Chain H: 



4 Data and refinement statistics

Property	Value	Source
Space group	P 61 2 2	Depositor
Cell constants a, b, c, α , β , γ	159.13Å 159.13Å 364.37Å 90.00° 90.00° 120.00°	Depositor
Resolution (Å)	39.55 – 2.70 39.55 – 2.70	Depositor EDS
% Data completeness (in resolution range)	98.0 (39.55-2.70) 98.0 (39.55-2.70)	Depositor EDS
R_{merge}	(Not available)	Depositor
R_{sym}	(Not available)	Depositor
$\langle I/\sigma(I) \rangle$ ¹	2.39 (at 2.69Å)	Xtrriage
Refinement program	REFMAC, PHENIX 1.8.1_1168	Depositor
R, R_{free}	0.220 , 0.246 0.227 , 0.252	Depositor DCC
R_{free} test set	3733 reflections (5.04%)	wwPDB-VP
Wilson B-factor (Å ²)	69.7	Xtrriage
Anisotropy	0.071	Xtrriage
Bulk solvent k_{sol} (e/Å ³), B_{sol} (Å ²)	0.41 , 71.3	EDS
L-test for twinning ²	$\langle L \rangle = 0.48$, $\langle L^2 \rangle = 0.31$	Xtrriage
Estimated twinning fraction	No twinning to report.	Xtrriage
F_o, F_c correlation	0.93	EDS
Total number of atoms	16386	wwPDB-VP
Average B, all atoms (Å ²)	81.0	wwPDB-VP

Xtrriage's analysis on translational NCS is as follows: *The largest off-origin peak in the Patterson function is 2.58% of the height of the origin peak. No significant pseudotranslation is detected.*

¹Intensities estimated from amplitudes.

²Theoretical values of $\langle |L| \rangle$, $\langle L^2 \rangle$ for acentric reflections are 0.5, 0.333 respectively for untwinned datasets, and 0.375, 0.2 for perfectly twinned datasets.

5 Model quality [i](#)

5.1 Standard geometry [i](#)

Bond lengths and bond angles in the following residue types are not validated in this section: UMQ, MYS, CLA, CD, 7PH, FES, OPC, HEM, 8K6, OCT, BCR, SQD

The Z score for a bond length (or angle) is the number of standard deviations the observed value is removed from the expected value. A bond length (or angle) with $|Z| > 5$ is considered an outlier worth inspection. RMSZ is the root-mean-square of all Z scores of the bond lengths (or angles).

Mol	Chain	Bond lengths		Bond angles	
		RMSZ	# $ Z > 5$	RMSZ	# $ Z > 5$
1	A	0.24	0/1768	0.39	0/2411
2	B	0.24	0/1278	0.45	1/1752 (0.1%)
3	C	0.22	0/2241	0.41	0/3053
4	D	0.21	0/1280	0.40	0/1745
5	E	0.25	0/230	0.36	0/309
6	F	0.25	0/234	0.35	0/315
7	G	0.25	0/286	0.41	0/387
8	H	0.26	0/233	0.42	0/319
All	All	0.23	0/7550	0.41	1/10291 (0.0%)

There are no bond length outliers.

All (1) bond angle outliers are listed below:

Mol	Chain	Res	Type	Atoms	Z	Observed($^{\circ}$)	Ideal($^{\circ}$)
2	B	39	VAL	CG1-CB-CG2	6.68	121.59	110.90

There are no chirality outliers.

There are no planarity outliers.

5.2 Too-close contacts [i](#)

In the following table, the Non-H and H(model) columns list the number of non-hydrogen atoms and hydrogen atoms in the chain respectively. The H(added) column lists the number of hydrogen atoms added and optimized by MolProbity. The Clashes column lists the number of clashes within the asymmetric unit, whereas Symm-Clashes lists symmetry related clashes.

Mol	Chain	Non-H	H(model)	H(added)	Clashes	Symm-Clashes
1	A	1715	1736	1734	30	1
2	B	1239	1292	1290	22	0

Continued on next page...

Continued from previous page...

Mol	Chain	Non-H	H(model)	H(added)	Clashes	Symm-Clashes
3	C	2195	2184	2183	31	0
4	D	1249	1210	1208	8	0
5	E	227	257	257	2	0
6	F	231	252	252	2	0
7	G	281	303	303	6	0
8	H	227	243	243	9	0
9	A	129	90	90	19	0
9	C	43	30	30	7	0
10	A	136	173	166	5	0
10	F	34	43	42	1	0
11	A	15	32	32	1	0
12	A	18	38	38	0	0
13	B	65	62	72	3	0
14	B	54	83	83	0	0
14	C	54	83	83	2	0
15	C	32	49	45	0	0
16	C	1	0	0	0	0
17	D	29	24	22	0	0
18	D	4	0	0	1	0
19	F	8	18	18	0	0
20	G	40	56	56	5	0
21	A	26	0	0	5	0
21	B	22	0	0	4	0
21	C	45	0	0	3	0
21	D	1	0	0	0	0
21	G	5	0	0	0	0
21	H	3	0	0	0	0
All	All	8128	8258	8247	112	1

The all-atom clashscore is defined as the number of clashes found per 1000 atoms (including hydrogen atoms). The all-atom clashscore for this structure is 7.

All (112) close contacts within the same asymmetric unit are listed below, sorted by their clash magnitude.

Atom-1	Atom-2	Interatomic distance (Å)	Clash overlap (Å)
2:B:126:ARG:NH1	21:B:319:HOH:O	2.04	0.90
3:C:25:CYS:SG	9:C:301:HEM:CAC	2.65	0.84
1:A:35:CYS:SG	9:A:303:HEM:CAB	2.70	0.80
9:A:303:HEM:O1A	21:A:425:HOH:O	2.03	0.77
1:A:3:ASN:ND2	1:A:6:ASP:OD2	2.20	0.75
10:A:307:UMQ:H51	2:B:36:LEU:HD21	1.71	0.73

Continued on next page...

Continued from previous page...

Atom-1	Atom-2	Interatomic distance (Å)	Clash overlap (Å)
1:A:47:GLN:O	21:A:422:HOH:O	2.06	0.72
2:B:140:THR:OG1	21:B:318:HOH:O	2.08	0.71
7:G:23:TYR:CE1	20:G:101:BCR:H23C	2.25	0.71
3:C:151:VAL:O	21:C:417:HOH:O	2.07	0.70
13:B:201:CLA:HHC	13:B:201:CLA:HBB1	1.75	0.67
3:C:22:CYS:SG	9:C:301:HEM:CAB	2.83	0.67
9:C:301:HEM:HBB2	9:C:301:HEM:HMB1	1.76	0.67
1:A:83:ARG:NH1	9:A:301:HEM:O1D	2.28	0.66
2:B:115:GLU:OE1	21:B:319:HOH:O	2.15	0.64
1:A:114:ARG:NH1	1:A:210:GLY:O	2.31	0.64
9:A:303:HEM:HHD	9:A:303:HEM:HBC2	1.80	0.64
1:A:35:CYS:SG	9:A:303:HEM:CBB	2.86	0.63
1:A:35:CYS:HG	9:A:303:HEM:CAB	2.11	0.63
3:C:25:CYS:SG	9:C:301:HEM:CBC	2.87	0.62
3:C:64:ASP:OD2	3:C:65:GLY:N	2.34	0.61
3:C:262:VAL:HG13	8:H:14:VAL:HG13	1.81	0.61
1:A:39:ILE:HD11	20:G:101:BCR:H312	1.84	0.59
3:C:270:VAL:HA	8:H:21:MET:HE2	1.84	0.59
9:A:303:HEM:HHA	9:A:303:HEM:HBD1	1.86	0.58
3:C:263:ALA:HA	3:C:266:MET:HE2	1.86	0.58
2:B:45:MET:HE3	4:D:27:VAL:HG13	1.85	0.58
3:C:262:VAL:HG13	8:H:14:VAL:CG1	2.34	0.57
1:A:1:MET:SD	1:A:1:MET:N	2.78	0.56
3:C:215:PRO:O	3:C:216:GLU:HB3	2.05	0.56
1:A:86:HIS:CE1	9:A:301:HEM:C4D	2.94	0.54
1:A:86:HIS:CD2	21:A:422:HOH:O	2.59	0.54
6:F:13:PHE:CD1	7:G:16:VAL:HG13	2.43	0.54
3:C:270:VAL:HA	8:H:21:MET:CE	2.39	0.53
1:A:215:LEU:O	21:A:406:HOH:O	2.19	0.53
5:E:7:TYR:CZ	5:E:11:LEU:HD11	2.43	0.53
3:C:215:PRO:O	3:C:216:GLU:CB	2.55	0.53
8:H:28:GLY:O	8:H:29:LEU:HB2	2.09	0.52
9:A:301:HEM:HMC1	9:A:301:HEM:HBC2	1.92	0.52
2:B:104:VAL:HB	2:B:105:PRO:CD	2.40	0.52
4:D:36:TYR:HB3	4:D:37:PRO:HD3	1.92	0.52
1:A:138:LEU:N	1:A:139:PRO:CD	2.74	0.51
2:B:36:LEU:O	2:B:40:PHE:HB2	2.11	0.51
7:G:20:GLY:N	20:G:101:BCR:H363	2.26	0.51
14:C:302:OPC:HAR1	5:E:3:ALA:HB1	1.93	0.51
8:H:17:TRP:O	8:H:21:MET:HG2	2.11	0.51
3:C:183:ILE:HG22	3:C:183:ILE:O	2.11	0.50

Continued on next page...

Continued from previous page...

Atom-1	Atom-2	Interatomic distance (Å)	Clash overlap (Å)
9:A:303:HEM:C2A	10:A:307:UMQ:H62	2.45	0.50
9:A:303:HEM:CBA	10:A:307:UMQ:H41	2.42	0.50
3:C:160:VAL:O	9:C:301:HEM:HMD1	2.10	0.50
4:D:108:CYS:SG	4:D:115:VAL:HG22	2.51	0.50
1:A:136:TYR:CE1	2:B:78:GLU:CG	2.94	0.50
9:A:303:HEM:HMB1	9:A:303:HEM:HBB2	1.94	0.50
7:G:13:LEU:HA	7:G:16:VAL:HG23	1.93	0.49
9:A:302:HEM:HMB1	9:A:302:HEM:HBB2	1.95	0.49
13:B:201:CLA:CBB	13:B:201:CLA:HHC	2.40	0.49
2:B:30:PRO:O	2:B:34:ASN:HB2	2.13	0.49
9:A:301:HEM:HBB2	9:A:301:HEM:HMB1	1.93	0.49
3:C:19:ARG:NH1	3:C:24:ASN:OD1	2.46	0.49
9:A:302:HEM:HBC2	9:A:302:HEM:HMC1	1.95	0.48
9:C:301:HEM:HBC2	9:C:301:HEM:HMC2	1.95	0.48
1:A:86:HIS:HE1	9:A:301:HEM:C4D	2.16	0.48
3:C:22:CYS:SG	9:C:301:HEM:CBB	3.02	0.47
1:A:31:ASN:HA	8:H:29:LEU:HD13	1.96	0.47
2:B:45:MET:CE	4:D:27:VAL:HG13	2.45	0.47
4:D:73:HIS:ND1	4:D:73:HIS:O	2.48	0.47
1:A:92:MET:O	1:A:96:MET:HG2	2.15	0.47
1:A:107:THR:O	1:A:107:THR:HG23	2.14	0.46
1:A:186:ALA:HB2	11:A:306:MYS:H81	1.96	0.46
4:D:77:ASP:N	4:D:77:ASP:OD2	2.47	0.46
1:A:35:CYS:SG	9:A:303:HEM:C3B	3.07	0.46
2:B:104:VAL:HB	2:B:105:PRO:HD3	1.96	0.46
3:C:115:ILE:HG21	21:C:413:HOH:O	2.16	0.46
2:B:82:TYR:HB2	2:B:83:PRO:HD3	1.97	0.45
2:B:111:VAL:N	2:B:112:PRO:HD2	2.32	0.45
2:B:153:LYS:O	2:B:157:LEU:N	2.50	0.45
3:C:72:VAL:HG21	3:C:124:TYR:O	2.17	0.45
3:C:211:ILE:O	3:C:211:ILE:HG13	2.15	0.45
1:A:154:VAL:N	1:A:155:PRO:CD	2.80	0.44
3:C:2:PRO:HG2	3:C:117:GLY:HA2	1.98	0.44
3:C:38:GLN:N	14:C:302:OPC:OAB	2.50	0.44
1:A:8:PHE:O	1:A:12:LEU:HB2	2.18	0.44
1:A:136:TYR:CE1	2:B:78:GLU:HG2	2.53	0.44
3:C:231:LEU:HD12	3:C:232:THR:HG23	1.99	0.44
7:G:12:GLY:O	7:G:16:VAL:HG22	2.18	0.43
3:C:13:PRO:HB3	3:C:106:TYR:CE1	2.53	0.43
3:C:217:LEU:HD23	3:C:232:THR:HG22	2.00	0.43
20:G:101:BCR:C32	8:H:19:ILE:HD13	2.48	0.43

Continued on next page...

Continued from previous page...

Atom-1	Atom-2	Interatomic distance (Å)	Clash overlap (Å)
3:C:186:GLN:OE1	3:C:187:GLU:N	2.52	0.43
21:B:308:HOH:O	3:C:276:LYS:NZ	2.52	0.43
1:A:118:TRP:CE3	9:A:302:HEM:HAC	2.54	0.43
1:A:51:GLY:HA3	21:A:422:HOH:O	2.19	0.43
3:C:6:GLN:NE2	21:C:413:HOH:O	2.51	0.42
3:C:266:MET:SD	8:H:13:VAL:HG12	2.59	0.42
1:A:121:GLY:O	9:A:302:HEM:HMC3	2.19	0.42
4:D:110:HIS:HB3	18:D:202:FES:S2	2.59	0.42
10:A:307:UMQ:H31	2:B:36:LEU:HD11	2.01	0.42
3:C:90:ILE:O	3:C:95:LYS:NZ	2.49	0.42
2:B:119:LYS:HG2	2:B:119:LYS:O	2.20	0.42
1:A:129:VAL:HG21	13:B:201:CLA:H11	2.02	0.42
3:C:176:ALA:HA	3:C:227:ALA:HB2	2.02	0.42
1:A:25:TYR:CZ	2:B:5:LYS:HD3	2.55	0.41
1:A:132:GLY:HA3	2:B:80:TYR:OH	2.20	0.41
7:G:23:TYR:CD2	20:G:101:BCR:H19C	2.56	0.41
1:A:110:PHE:HB3	1:A:118:TRP:CE3	2.56	0.41
10:A:307:UMQ:O3'	10:A:307:UMQ:O2	2.29	0.41
2:B:108:LEU:HA	2:B:108:LEU:HD13	1.94	0.41
2:B:82:TYR:N	2:B:83:PRO:CD	2.84	0.41
2:B:40:PHE:HB2	2:B:41:PRO:HD3	2.02	0.40
3:C:104:GLN:HA	3:C:105:PRO:HD3	1.97	0.40
4:D:44:PRO:HA	4:D:45:PRO:HD3	1.98	0.40
6:F:1:MET:O	10:F:101:UMQ:O6'	2.20	0.40

All (1) symmetry-related close contacts are listed below. The label for Atom-2 includes the symmetry operator and encoded unit-cell translations to be applied.

Atom-1	Atom-2	Interatomic distance (Å)	Clash overlap (Å)
1:A:11:ARG:NH1	1:A:115:GLU:OE1[12_565]	2.04	0.16

5.3 Torsion angles [i](#)

5.3.1 Protein backbone [i](#)

In the following table, the Percentiles column shows the percent Ramachandran outliers of the chain as a percentile score with respect to all X-ray entries followed by that with respect to entries of similar resolution.

The Analysed column shows the number of residues for which the backbone conformation was

analysed, and the total number of residues.

Mol	Chain	Analysed	Favoured	Allowed	Outliers	Percentiles	
1	A	213/215 (99%)	206 (97%)	6 (3%)	1 (0%)	29	54
2	B	158/160 (99%)	149 (94%)	8 (5%)	1 (1%)	25	50
3	C	287/289 (99%)	252 (88%)	27 (9%)	8 (3%)	5	11
4	D	162/179 (90%)	136 (84%)	22 (14%)	4 (2%)	5	14
5	E	29/31 (94%)	28 (97%)	1 (3%)	0	100	100
6	F	30/34 (88%)	28 (93%)	1 (3%)	1 (3%)	4	8
7	G	35/37 (95%)	34 (97%)	0	1 (3%)	4	10
8	H	27/29 (93%)	27 (100%)	0	0	100	100
All	All	941/974 (97%)	860 (91%)	65 (7%)	16 (2%)	9	23

All (16) Ramachandran outliers are listed below:

Mol	Chain	Res	Type
3	C	190	ASP
3	C	216	GLU
4	D	78	ARG
3	C	200	LYS
3	C	222	GLY
3	C	287	MET
4	D	145	PRO
7	G	36	GLY
1	A	3	ASN
3	C	202	GLU
3	C	285	ALA
4	D	54	THR
2	B	74	GLU
3	C	215	PRO
6	F	2	SER
4	D	51	GLY

5.3.2 Protein sidechains [i](#)

In the following table, the Percentiles column shows the percent sidechain outliers of the chain as a percentile score with respect to all X-ray entries followed by that with respect to entries of similar resolution.

The Analysed column shows the number of residues for which the sidechain conformation was analysed, and the total number of residues.

Mol	Chain	Analysed	Rotameric	Outliers	Percentiles	
1	A	184/184 (100%)	173 (94%)	11 (6%)	19	42
2	B	134/134 (100%)	124 (92%)	10 (8%)	13	31
3	C	238/238 (100%)	218 (92%)	20 (8%)	11	25
4	D	133/145 (92%)	129 (97%)	4 (3%)	41	70
5	E	21/21 (100%)	20 (95%)	1 (5%)	25	53
6	F	22/24 (92%)	22 (100%)	0	100	100
7	G	29/29 (100%)	25 (86%)	4 (14%)	3	8
8	H	24/24 (100%)	24 (100%)	0	100	100
All	All	785/799 (98%)	735 (94%)	50 (6%)	17	39

All (50) residues with a non-rotameric sidechain are listed below:

Mol	Chain	Res	Type
1	A	1	MET
1	A	11	ARG
1	A	26	VAL
1	A	36	LEU
1	A	64	GLU
1	A	81	LEU
1	A	87	ARG
1	A	107	THR
1	A	115	GLU
1	A	164	LEU
1	A	200	LEU
2	B	1	MET
2	B	62	THR
2	B	76	LEU
2	B	96	LEU
2	B	108	LEU
2	B	134	LEU
2	B	138	LEU
2	B	153	LYS
2	B	156	THR
2	B	159	LEU
3	C	20	ILE
3	C	22	CYS
3	C	60	GLN
3	C	67	LYS
3	C	70	LEU
3	C	94	LEU

Continued on next page...

Continued from previous page...

Mol	Chain	Res	Type
3	C	108	GLU
3	C	115	ILE
3	C	122	GLU
3	C	123	GLN
3	C	131	VAL
3	C	155	ARG
3	C	166	LYS
3	C	196	LEU
3	C	209	ASP
3	C	211	ILE
3	C	225	VAL
3	C	249	LEU
3	C	264	LEU
3	C	267	LEU
4	D	54	THR
4	D	55	THR
4	D	63	ASP
4	D	109	THR
5	E	10	PHE
7	G	6	LEU
7	G	16	VAL
7	G	21	LEU
7	G	27	LYS

Some sidechains can be flipped to improve hydrogen bonding and reduce clashes. All (1) such sidechains are listed below:

Mol	Chain	Res	Type
1	A	86	HIS

5.3.3 RNA [i](#)

There are no RNA molecules in this entry.

5.4 Non-standard residues in protein, DNA, RNA chains [i](#)

There are no non-standard protein/DNA/RNA residues in this entry.

5.5 Carbohydrates [i](#)

There are no monosaccharides in this entry.

5.6 Ligand geometry i

Of 20 ligands modelled in this entry, 1 is monoatomic - leaving 19 for Mogul analysis.

In the following table, the Counts columns list the number of bonds (or angles) for which Mogul statistics could be retrieved, the number of bonds (or angles) that are observed in the model and the number of bonds (or angles) that are defined in the Chemical Component Dictionary. The Link column lists molecule types, if any, to which the group is linked. The Z score for a bond length (or angle) is the number of standard deviations the observed value is removed from the expected value. A bond length (or angle) with $|Z| > 2$ is considered an outlier worth inspection. RMSZ is the root-mean-square of all Z scores of the bond lengths (or angles).

Mol	Type	Chain	Res	Link	Bond lengths			Bond angles		
					Counts	RMSZ	# Z > 2	Counts	RMSZ	# Z > 2
9	HEM	C	301	3	27,50,50	2.09	5 (18%)	17,82,82	1.54	4 (23%)
10	UMQ	F	101	-	35,35,35	1.33	6 (17%)	46,46,46	2.02	13 (28%)
15	7PH	C	303	-	31,31,37	0.95	2 (6%)	33,33,42	1.19	3 (9%)
11	MYS	A	306	-	14,14,14	0.31	0	13,13,13	0.81	0
18	FES	D	202	4	0,4,4	0.00	-	-		
12	8K6	A	308	-	17,17,17	0.20	0	16,16,16	0.55	0
19	OCT	F	102	-	7,7,7	0.27	0	6,6,6	0.69	0
9	HEM	A	303	-	27,50,50	2.17	5 (18%)	17,82,82	1.35	2 (11%)
10	UMQ	A	307	-	35,35,35	1.31	5 (14%)	46,46,46	2.02	11 (23%)
17	SQD	D	201	-	28,29,54	1.85	8 (28%)	37,40,65	5.78	9 (24%)
14	OPC	B	202	-	53,53,54	0.97	4 (7%)	59,61,64	1.00	1 (1%)
13	CLA	B	201	21	59,73,73	1.46	5 (8%)	67,113,113	1.41	8 (11%)
10	UMQ	A	305	-	35,35,35	1.37	6 (17%)	46,46,46	2.07	8 (17%)
10	UMQ	A	304	-	35,35,35	1.31	6 (17%)	46,46,46	2.03	10 (21%)
20	BCR	G	101	-	41,41,41	2.27	24 (58%)	56,56,56	2.19	18 (32%)
10	UMQ	A	309	-	35,35,35	1.30	5 (14%)	46,46,46	2.01	11 (23%)
9	HEM	A	302	1	27,50,50	2.10	6 (22%)	17,82,82	1.57	5 (29%)
9	HEM	A	301	1	27,50,50	2.07	6 (22%)	17,82,82	1.60	5 (29%)
14	OPC	C	302	-	53,53,54	0.99	4 (7%)	59,61,64	0.98	2 (3%)

In the following table, the Chirals column lists the number of chiral outliers, the number of chiral centers analysed, the number of these observed in the model and the number defined in the Chemical Component Dictionary. Similar counts are reported in the Torsion and Rings columns. '-' means no outliers of that kind were identified.

Mol	Type	Chain	Res	Link	Chirals	Torsions	Rings
9	HEM	C	301	3	-	0/6/54/54	-
9	HEM	A	303	-	-	2/6/54/54	-

Continued on next page...

Continued from previous page...

Mol	Type	Chain	Res	Link	Chirals	Torsions	Rings
14	OPC	C	302	-	-	28/57/57/60	-
15	7PH	C	303	-	-	13/33/33/39	-
11	MYS	A	306	-	-	3/12/12/12	-
18	FES	D	202	4	-	-	0/1/1/1
12	8K6	A	308	-	-	7/15/15/15	-
19	OCT	F	102	-	-	0/5/5/5	-
10	UMQ	F	101	-	2/2/10/10	6/20/60/60	0/2/2/2
10	UMQ	A	307	-	2/2/10/10	13/20/60/60	0/2/2/2
17	SQD	D	201	-	-	6/23/43/69	0/1/1/1
14	OPC	B	202	-	-	25/57/57/60	-
13	CLA	B	201	21	3/3/22/25	8/37/135/135	-
10	UMQ	A	304	-	2/2/10/10	12/20/60/60	0/2/2/2
20	BCR	G	101	-	-	19/29/63/63	0/2/2/2
10	UMQ	A	309	-	2/2/10/10	12/20/60/60	0/2/2/2
9	HEM	A	302	1	-	0/6/54/54	-
9	HEM	A	301	1	-	1/6/54/54	-
10	UMQ	A	305	-	2/2/10/10	6/20/60/60	0/2/2/2

All (97) bond length outliers are listed below:

Mol	Chain	Res	Type	Atoms	Z	Observed(Å)	Ideal(Å)
13	B	201	CLA	C4B-NB	7.80	1.42	1.35
9	C	301	HEM	C3D-C2D	5.54	1.54	1.37
9	A	303	HEM	C3D-C2D	5.45	1.53	1.37
9	A	301	HEM	C3D-C2D	5.45	1.53	1.37
9	A	302	HEM	C3D-C2D	5.27	1.53	1.37
17	D	201	SQD	O47-C45	-4.76	1.34	1.46
9	A	303	HEM	C3C-C2C	-4.51	1.34	1.40
9	A	302	HEM	C3C-C2C	-3.97	1.34	1.40
9	A	302	HEM	C3B-C2B	-3.94	1.34	1.40
9	C	301	HEM	C3C-C2C	-3.88	1.35	1.40
9	A	303	HEM	C3C-CAC	3.85	1.55	1.47
9	C	301	HEM	C3B-C2B	-3.84	1.35	1.40
9	A	303	HEM	C3B-C2B	-3.83	1.35	1.40
9	A	301	HEM	C3C-CAC	3.82	1.55	1.47
9	A	301	HEM	C3B-CAB	3.74	1.55	1.47
9	A	302	HEM	C3C-CAC	3.72	1.55	1.47
9	A	303	HEM	C3B-CAB	3.68	1.55	1.47
9	C	301	HEM	C3C-CAC	3.67	1.55	1.47

Continued on next page...

Continued from previous page...

Mol	Chain	Res	Type	Atoms	Z	Observed(Å)	Ideal(Å)
9	A	301	HEM	C3C-C2C	-3.65	1.35	1.40
9	A	301	HEM	C3B-C2B	-3.64	1.35	1.40
9	C	301	HEM	C3B-CAB	3.64	1.55	1.47
9	A	302	HEM	C3B-CAB	3.63	1.55	1.47
17	D	201	SQD	C3-C2	-3.51	1.43	1.52
14	C	302	OPC	OAN-CAO	3.46	1.44	1.34
10	A	307	UMQ	C4-C5	-3.42	1.45	1.53
20	G	101	BCR	C20-C21	3.41	1.54	1.43
20	G	101	BCR	C17-C18	3.40	1.40	1.35
14	B	202	OPC	OAN-CAO	3.34	1.43	1.34
15	C	303	7PH	O21-C2	-3.33	1.38	1.46
20	G	101	BCR	C23-C22	3.32	1.53	1.45
10	A	305	UMQ	C4-C5	-3.31	1.46	1.53
13	B	201	CLA	CHC-C1C	3.29	1.43	1.35
20	G	101	BCR	C21-C22	3.27	1.40	1.35
20	G	101	BCR	C16-C17	3.22	1.53	1.43
20	G	101	BCR	C15-C14	3.22	1.53	1.43
17	D	201	SQD	O48-C23	3.16	1.42	1.33
20	G	101	BCR	C11-C10	3.16	1.53	1.43
20	G	101	BCR	C12-C13	3.15	1.52	1.45
20	G	101	BCR	C19-C18	3.14	1.52	1.45
20	G	101	BCR	C8-C9	3.14	1.52	1.45
20	G	101	BCR	C14-C13	3.10	1.39	1.35
10	A	304	UMQ	C4-C5	-3.08	1.46	1.53
20	G	101	BCR	C26-C25	3.05	1.39	1.34
10	A	309	UMQ	C4-C5	-2.98	1.46	1.53
15	C	303	7PH	O31-C3	-2.83	1.38	1.45
10	A	307	UMQ	C3-C4	-2.82	1.45	1.52
10	F	101	UMQ	C4-C5	-2.78	1.47	1.53
10	A	304	UMQ	C3-C4	-2.74	1.45	1.52
10	F	101	UMQ	O2'-C2'	-2.74	1.36	1.43
20	G	101	BCR	C32-C1	-2.70	1.48	1.53
10	A	305	UMQ	O2'-C2'	-2.70	1.36	1.43
10	A	309	UMQ	O2'-C2'	-2.70	1.36	1.43
10	F	101	UMQ	O5'-C5'	-2.66	1.37	1.44
10	A	307	UMQ	O2'-C2'	-2.65	1.36	1.43
13	B	201	CLA	C1D-C2D	2.65	1.48	1.42
10	A	305	UMQ	C3-C4	-2.63	1.45	1.52
17	D	201	SQD	O47-C7	2.63	1.41	1.35
14	C	302	OPC	OBJ-CBK	2.58	1.40	1.33
10	A	304	UMQ	O3'-C3'	-2.53	1.37	1.43
17	D	201	SQD	C1-C2	-2.49	1.45	1.52

Continued on next page...

Continued from previous page...

Mol	Chain	Res	Type	Atoms	Z	Observed(Å)	Ideal(Å)
10	A	305	UMQ	O3'-C3'	-2.48	1.37	1.43
20	G	101	BCR	C10-C9	2.48	1.39	1.35
10	A	309	UMQ	O3'-C3'	-2.45	1.37	1.43
10	A	309	UMQ	C3-C4	-2.44	1.46	1.52
10	F	101	UMQ	O3'-C3'	-2.43	1.37	1.43
20	G	101	BCR	C40-C30	-2.42	1.49	1.53
13	B	201	CLA	CMB-C2B	-2.38	1.46	1.51
10	F	101	UMQ	C3-C4	-2.37	1.46	1.52
10	A	309	UMQ	O5'-C5'	-2.36	1.38	1.44
17	D	201	SQD	O4-C4	-2.35	1.37	1.43
10	A	304	UMQ	O2'-C2'	-2.35	1.37	1.43
20	G	101	BCR	C5-C6	2.33	1.38	1.34
14	B	202	OPC	OBJ-CBI	-2.30	1.39	1.45
17	D	201	SQD	O5-C5	2.30	1.49	1.44
10	A	305	UMQ	O5'-C5'	-2.29	1.38	1.44
14	B	202	OPC	OBJ-CBK	2.28	1.40	1.33
20	G	101	BCR	C24-C23	2.27	1.39	1.33
17	D	201	SQD	C4-C3	-2.25	1.46	1.52
20	G	101	BCR	C39-C30	-2.23	1.49	1.53
20	G	101	BCR	C31-C1	-2.21	1.49	1.53
10	A	304	UMQ	O1-C1	-2.20	1.35	1.41
9	A	301	HEM	CAA-C2A	2.20	1.55	1.52
10	A	307	UMQ	O3'-C3'	-2.19	1.37	1.43
20	G	101	BCR	C20-C19	2.17	1.40	1.34
20	G	101	BCR	C24-C25	2.17	1.52	1.45
14	C	302	OPC	OBJ-CBI	-2.15	1.40	1.45
20	G	101	BCR	C11-C12	2.12	1.40	1.34
14	C	302	OPC	CAV-CAW	2.10	1.44	1.31
13	B	201	CLA	CMD-C2D	-2.08	1.46	1.51
10	F	101	UMQ	O1-C1	-2.08	1.35	1.41
20	G	101	BCR	C29-C28	-2.08	1.47	1.52
10	A	304	UMQ	O5'-C5'	-2.07	1.39	1.44
20	G	101	BCR	C7-C6	2.07	1.52	1.45
14	B	202	OPC	CAV-CAW	2.06	1.43	1.31
10	A	307	UMQ	O5'-C5'	-2.05	1.39	1.44
10	A	305	UMQ	O1-C1	-2.01	1.36	1.41
9	A	302	HEM	CAA-C2A	2.00	1.55	1.52

All (110) bond angle outliers are listed below:

Mol	Chain	Res	Type	Atoms	Z	Observed(°)	Ideal(°)
17	D	201	SQD	O7-S-C6	25.22	136.92	106.94

Continued on next page...

Continued from previous page...

Mol	Chain	Res	Type	Atoms	Z	Observed(°)	Ideal(°)
17	D	201	SQD	O9-S-C6	-20.54	82.53	106.94
17	D	201	SQD	O9-S-O7	-9.20	82.10	113.95
10	A	305	UMQ	O1'-C1'-C2'	7.22	119.57	108.30
10	F	101	UMQ	O5-C5-C4	6.32	121.17	109.69
10	A	305	UMQ	O5'-C5'-C4'	5.84	122.06	109.75
10	A	307	UMQ	C1-C2-C3	5.80	122.08	110.00
13	B	201	CLA	C4A-NA-C1A	5.69	109.26	106.71
10	A	309	UMQ	CA-O1'-C1'	5.20	122.46	113.84
10	A	309	UMQ	O1-C1-C2	5.07	121.24	108.10
10	A	304	UMQ	O1-C4'-C5'	5.04	123.26	109.45
17	D	201	SQD	O47-C7-C8	5.00	120.29	111.09
10	A	305	UMQ	O5'-C1'-C2'	4.90	120.72	110.35
10	A	304	UMQ	O5'-C5'-C6'	4.89	118.58	106.44
10	A	305	UMQ	O5'-C5'-C6'	4.81	118.39	106.44
10	F	101	UMQ	O5-C5-C6	4.78	118.32	106.44
10	A	304	UMQ	O5'-C5'-C4'	4.74	119.75	109.75
10	A	309	UMQ	O2-C2-C3	4.63	121.06	110.35
10	A	307	UMQ	O3'-C3'-C2'	4.63	121.04	110.35
20	G	101	BCR	C16-C17-C18	-4.58	120.77	127.31
10	A	304	UMQ	O1-C4'-C3'	4.57	119.45	107.28
10	A	309	UMQ	O2-C2-C1	4.57	121.15	110.05
20	G	101	BCR	C15-C14-C13	-4.48	120.91	127.31
10	A	307	UMQ	CA-O1'-C1'	4.43	121.18	113.84
10	A	304	UMQ	O2'-C2'-C1'	4.37	120.67	110.05
20	G	101	BCR	C2-C1-C6	4.35	117.19	110.48
10	A	304	UMQ	O2'-C2'-C3'	4.35	120.40	110.35
20	G	101	BCR	C20-C21-C22	-4.33	121.12	127.31
10	F	101	UMQ	O2-C2-C3	4.32	120.33	110.35
10	F	101	UMQ	C1-C2-C3	4.32	118.98	110.00
10	A	307	UMQ	O3'-C3'-C4'	4.25	121.20	109.94
20	G	101	BCR	C7-C8-C9	-4.17	119.93	126.23
10	A	305	UMQ	O5'-C1'-O1'	4.06	119.58	109.97
14	C	302	OPC	OAN-CAO-CAP	4.05	120.24	111.50
10	F	101	UMQ	O2-C2-C1	4.05	119.89	110.05
14	B	202	OPC	OAN-CAO-CAP	4.01	120.14	111.50
10	A	309	UMQ	O1-C1-O5	3.98	121.79	110.67
10	A	304	UMQ	C1'-C2'-C3'	3.90	118.13	110.00
10	A	305	UMQ	CA-O1'-C1'	3.86	120.25	113.84
20	G	101	BCR	C11-C10-C9	-3.83	121.85	127.31
10	A	309	UMQ	O5'-C5'-C4'	3.79	117.75	109.75
20	G	101	BCR	C38-C26-C25	-3.74	120.33	124.53
17	D	201	SQD	O8-S-C6	3.58	111.45	105.74

Continued on next page...

Continued from previous page...

Mol	Chain	Res	Type	Atoms	Z	Observed(°)	Ideal(°)
10	A	307	UMQ	O2-C2-C1	3.55	118.68	110.05
20	G	101	BCR	C33-C5-C6	-3.55	120.55	124.53
10	A	307	UMQ	O2-C2-C3	3.54	118.54	110.35
20	G	101	BCR	C33-C5-C4	3.49	120.32	113.62
10	A	309	UMQ	C1-C2-C3	3.49	117.26	110.00
13	B	201	CLA	CMB-C2B-C1B	-3.43	123.19	128.46
10	A	307	UMQ	C2'-C3'-C4'	3.26	117.12	109.68
20	G	101	BCR	C23-C24-C25	-3.24	118.10	127.20
20	G	101	BCR	C38-C26-C27	3.20	119.76	113.62
15	C	303	7PH	O21-C21-C22	3.17	118.33	111.50
10	A	305	UMQ	C1-O1-C4'	-3.08	110.34	117.96
17	D	201	SQD	C44-O6-C1	3.07	119.74	113.74
10	A	309	UMQ	O5-C1-C2	3.04	116.78	110.35
10	A	307	UMQ	C1-O1-C4'	-3.00	110.55	117.96
20	G	101	BCR	C24-C23-C22	-2.94	121.80	126.23
10	A	307	UMQ	O5'-C5'-C4'	2.93	115.94	109.75
20	G	101	BCR	C29-C30-C25	2.93	114.98	110.48
10	F	101	UMQ	C6-C5-C4	2.90	119.80	113.00
20	G	101	BCR	C34-C9-C10	-2.89	118.88	122.92
13	B	201	CLA	O2D-CGD-O1D	-2.88	118.21	123.84
10	A	309	UMQ	C1-O1-C4'	-2.86	110.88	117.96
10	F	101	UMQ	CA-O1'-C1'	2.84	118.54	113.84
17	D	201	SQD	O48-C46-C45	2.79	116.56	108.43
13	B	201	CLA	CMB-C2B-C3B	2.78	129.89	124.68
9	A	301	HEM	CBD-CAD-C3D	-2.76	107.40	112.48
9	A	303	HEM	CBA-CAA-C2A	-2.76	107.40	112.49
10	F	101	UMQ	C1'-O5'-C5'	-2.67	108.45	113.69
9	A	302	HEM	CMB-C2B-C3B	2.67	129.67	124.68
9	A	301	HEM	CMB-C2B-C3B	2.60	129.55	124.68
9	A	303	HEM	CMB-C2B-C3B	2.59	129.53	124.68
14	C	302	OPC	OBJ-CBK-CBL	2.57	119.96	111.91
10	F	101	UMQ	C1-O1-C4'	-2.56	111.64	117.96
9	A	302	HEM	CBD-CAD-C3D	-2.54	107.80	112.48
20	G	101	BCR	C8-C7-C6	-2.53	120.09	127.20
13	B	201	CLA	C1B-CHB-C4A	-2.53	125.11	130.12
13	B	201	CLA	CMD-C2D-C3D	2.48	129.31	124.68
20	G	101	BCR	C4-C5-C6	-2.48	119.14	122.73
17	D	201	SQD	O48-C23-C24	2.48	119.68	111.91
15	C	303	7PH	O21-C21-O22	-2.45	117.77	123.70
9	A	301	HEM	CMC-C2C-C3C	2.45	129.26	124.68
20	G	101	BCR	C32-C1-C6	-2.43	106.36	110.30
9	C	301	HEM	CMC-C2C-C3C	2.41	129.18	124.68

Continued on next page...

Continued from previous page...

Mol	Chain	Res	Type	Atoms	Z	Observed(°)	Ideal(°)
9	C	301	HEM	C1D-C2D-C3D	-2.40	105.33	107.00
9	A	302	HEM	C1D-C2D-C3D	-2.40	105.33	107.00
10	F	101	UMQ	C1-O5-C5	-2.39	109.01	113.69
10	A	304	UMQ	C6'-C5'-C4'	2.38	120.24	113.33
10	A	309	UMQ	C1-O5-C5	-2.34	109.10	113.69
10	A	304	UMQ	CA-O1'-C1'	2.33	117.71	113.84
9	A	302	HEM	CMC-C2C-C3C	2.33	129.03	124.68
9	C	301	HEM	CMB-C2B-C3B	2.32	129.02	124.68
9	A	301	HEM	C1D-C2D-C3D	-2.30	105.39	107.00
10	F	101	UMQ	O5'-C5'-C4'	2.27	114.54	109.75
13	B	201	CLA	CHB-C4A-NA	2.22	127.58	124.51
10	A	307	UMQ	O5-C5-C6	2.19	111.87	106.44
20	G	101	BCR	C1-C6-C5	-2.18	119.54	122.61
17	D	201	SQD	O6-C44-C45	2.18	116.16	110.90
15	C	303	7PH	O31-C31-C32	2.17	118.72	111.91
10	A	309	UMQ	C3'-C4'-C5'	2.14	115.84	110.93
10	A	305	UMQ	C1-O5-C5	-2.13	109.50	113.69
10	F	101	UMQ	O5'-C1'-C2'	-2.12	105.85	110.35
10	A	304	UMQ	C4-C3-C2	-2.08	107.20	110.82
10	F	101	UMQ	C6'-C5'-C4'	-2.08	107.28	113.33
13	B	201	CLA	O2A-CGA-O1A	-2.05	118.42	123.59
9	A	302	HEM	CMA-C3A-C4A	-2.03	125.35	128.46
10	A	307	UMQ	C1'-O5'-C5'	2.02	117.65	113.69
9	C	301	HEM	CBD-CAD-C3D	-2.02	108.76	112.48
9	A	301	HEM	C4A-C3A-C2A	2.01	108.39	107.00

All (13) chirality outliers are listed below:

Mol	Chain	Res	Type	Atom
10	F	101	UMQ	C5
10	F	101	UMQ	C2
10	A	309	UMQ	C2
10	A	309	UMQ	C1
10	A	307	UMQ	C2
10	A	307	UMQ	C3'
13	B	201	CLA	NC
13	B	201	CLA	ND
13	B	201	CLA	NA
10	A	304	UMQ	C5'
10	A	304	UMQ	C2'
10	A	305	UMQ	C5'
10	A	305	UMQ	C1'

All (161) torsion outliers are listed below:

Mol	Chain	Res	Type	Atoms
10	F	101	UMQ	C2'-C1'-O1'-CA
10	F	101	UMQ	O5'-C1'-O1'-CA
14	C	302	OPC	CAM-CAL-OAK-PAJ
14	C	302	OPC	NAF-CAG-CAH-OAI
9	A	303	HEM	C2D-C3D-CAD-CBD
9	A	303	HEM	C4D-C3D-CAD-CBD
10	A	307	UMQ	O5'-C1'-O1'-CA
10	A	307	UMQ	CB-CA-O1'-C1'
17	D	201	SQD	O49-C7-O47-C45
17	D	201	SQD	C8-C7-O47-C45
17	D	201	SQD	C5-C6-S-O8
14	B	202	OPC	CAL-OAK-PAJ-OAB
14	B	202	OPC	CAH-OAI-PAJ-OBH
14	B	202	OPC	CAH-OAI-PAJ-OAB
13	B	201	CLA	C1A-C2A-CAA-CBA
13	B	201	CLA	C3A-C2A-CAA-CBA
15	C	303	7PH	O11-C1-C2-C3
15	C	303	7PH	O11-C1-C2-O21
15	C	303	7PH	O22-C21-O21-C2
15	C	303	7PH	C22-C21-O21-C2
20	G	101	BCR	C1-C6-C7-C8
20	G	101	BCR	C7-C8-C9-C10
20	G	101	BCR	C7-C8-C9-C34
20	G	101	BCR	C21-C22-C23-C24
20	G	101	BCR	C22-C23-C24-C25
20	G	101	BCR	C23-C24-C25-C30
10	A	309	UMQ	O5-C1-O1-C4'
17	D	201	SQD	O10-C23-O48-C46
17	D	201	SQD	C24-C23-O48-C46
10	A	309	UMQ	O5-C5-C6-O6
10	A	305	UMQ	O5-C5-C6-O6
10	F	101	UMQ	O5-C5-C6-O6
10	A	309	UMQ	C4'-C5'-C6'-O6'
10	A	305	UMQ	C4'-C5'-C6'-O6'
14	C	302	OPC	CAP-CAO-OAN-CAM
10	A	305	UMQ	C4-C5-C6-O6
10	A	309	UMQ	C4-C5-C6-O6
10	A	304	UMQ	O5'-C5'-C6'-O6'
10	A	305	UMQ	O5'-C1'-O1'-CA
20	G	101	BCR	C11-C12-C13-C35
20	G	101	BCR	C36-C18-C19-C20
20	G	101	BCR	C37-C22-C23-C24

Continued on next page...

Continued from previous page...

Mol	Chain	Res	Type	Atoms
20	G	101	BCR	C11-C12-C13-C14
20	G	101	BCR	C17-C18-C19-C20
13	B	201	CLA	C10-C11-C12-C13
10	A	307	UMQ	C2-C1-O1-C4'
10	A	309	UMQ	O5'-C5'-C6'-O6'
13	B	201	CLA	C8-C10-C11-C12
10	A	307	UMQ	O5-C5-C6-O6
10	A	307	UMQ	O5-C1-O1-C4'
10	A	309	UMQ	O5'-C1'-O1'-CA
14	C	302	OPC	OAD-CAO-OAN-CAM
14	B	202	OPC	CAH-OAI-PAJ-OAK
14	B	202	OPC	CBL-CBK-OBJ-CBI
10	A	307	UMQ	O1'-CA-CB-CC
14	B	202	OPC	CBA-CBB-CBC-CBD
14	B	202	OPC	CAQ-CAR-CAS-CAT
20	G	101	BCR	C16-C17-C18-C19
14	C	302	OPC	CBW-CBX-CBY-CBZ
10	A	307	UMQ	CG-CH-CI-CJ
14	B	202	OPC	CAR-CAS-CAT-CAU
15	C	303	7PH	C36-C37-C38-C39
11	A	306	MYS	C6-C7-C8-C9
10	A	304	UMQ	C4-C5-C6-O6
14	C	302	OPC	CBX-CBY-CBZ-CCA
14	B	202	OPC	CBM-CBN-CBO-CBP
10	F	101	UMQ	CD-CF-CG-CH
11	A	306	MYS	C4-C5-C6-C7
10	A	309	UMQ	CH-CI-CJ-CK
14	C	302	OPC	CAS-CAT-CAU-CAV
14	C	302	OPC	CBO-CBP-CBQ-CBR
15	C	303	7PH	C21-C22-C23-C24
10	A	309	UMQ	CA-CB-CC-CD
14	C	302	OPC	CAQ-CAR-CAS-CAT
12	A	308	8K6	C5-C6-C7-C8
14	C	302	OPC	CBB-CBC-CBD-CBE
12	A	308	8K6	C14-C15-C16-C17
20	G	101	BCR	C5-C6-C7-C8
20	G	101	BCR	C23-C24-C25-C26
15	C	303	7PH	C29-C2A-C2B-C2C
10	A	304	UMQ	C4'-C5'-C6'-O6'
20	G	101	BCR	C19-C20-C21-C22
14	C	302	OPC	CBT-CBU-CBV-CBW
10	A	307	UMQ	CA-CB-CC-CD

Continued on next page...

Continued from previous page...

Mol	Chain	Res	Type	Atoms
14	C	302	OPC	CBV-CBW-CBX-CBY
10	F	101	UMQ	CH-CI-CJ-CK
10	A	307	UMQ	C2'-C1'-O1'-CA
10	A	304	UMQ	C2'-C1'-O1'-CA
14	B	202	OPC	CAL-OAK-PAJ-OAI
15	C	303	7PH	C1-C2-C3-O31
10	A	309	UMQ	CI-CJ-CK-CL
10	A	304	UMQ	C5'-C4'-O1-C1
14	C	302	OPC	CAW-CAX-CAY-CAZ
14	B	202	OPC	CBO-CBP-CBQ-CBR
14	B	202	OPC	CBS-CBT-CBU-CBV
14	C	302	OPC	CAP-CAQ-CAR-CAS
13	B	201	CLA	C4-C3-C5-C6
13	B	201	CLA	C2-C3-C5-C6
14	B	202	OPC	CAP-CAQ-CAR-CAS
10	A	304	UMQ	CC-CD-CF-CG
14	B	202	OPC	OAD-CAO-OAN-CAM
15	C	303	7PH	C32-C31-O31-C3
9	A	301	HEM	C2A-CAA-CBA-CGA
14	B	202	OPC	CBK-CBL-CBM-CBN
14	B	202	OPC	CAL-CAM-CBI-OBJ
14	B	202	OPC	CBN-CBO-CBP-CBQ
13	B	201	CLA	O2A-C1-C2-C3
14	C	302	OPC	CBM-CBN-CBO-CBP
10	A	304	UMQ	CA-CB-CC-CD
14	B	202	OPC	OAN-CAM-CBI-OBJ
14	B	202	OPC	CBB-CBC-CBD-CBE
14	B	202	OPC	CBC-CBD-CBE-CBF
14	C	302	OPC	OAK-CAL-CAM-CBI
10	A	305	UMQ	CC-CD-CF-CG
15	C	303	7PH	C23-C24-C25-C26
20	G	101	BCR	C16-C17-C18-C36
14	C	302	OPC	CAY-CAZ-CBA-CBB
10	A	304	UMQ	O5'-C1'-O1'-CA
14	C	302	OPC	OAK-CAL-CAM-OAN
14	C	302	OPC	CBU-CBV-CBW-CBX
10	A	304	UMQ	O5-C1-O1-C4'
14	B	202	OPC	CAS-CAT-CAU-CAV
10	A	307	UMQ	CB-CC-CD-CF
14	C	302	OPC	CBQ-CBR-CBS-CBT
17	D	201	SQD	C5-C6-S-O9
14	B	202	OPC	NAF-CAG-CAH-OAI

Continued on next page...

Continued from previous page...

Mol	Chain	Res	Type	Atoms
15	C	303	7PH	O21-C2-C3-O31
14	B	202	OPC	CBV-CBW-CBX-CBY
10	A	304	UMQ	CF-CG-CH-CI
10	F	101	UMQ	CF-CG-CH-CI
14	C	302	OPC	CBI-CAM-OAN-CAO
15	C	303	7PH	C27-C28-C29-C2A
10	A	304	UMQ	O5-C5-C6-O6
10	A	307	UMQ	CH-CI-CJ-CK
10	A	307	UMQ	C4-C5-C6-O6
10	A	304	UMQ	C2-C1-O1-C4'
12	A	308	8K6	C1-C2-C3-C4
13	B	201	CLA	C13-C15-C16-C17
20	G	101	BCR	C11-C10-C9-C34
12	A	308	8K6	C7-C8-C9-C10
10	A	309	UMQ	CD-CF-CG-CH
12	A	308	8K6	C12-C13-C14-C15
20	G	101	BCR	C11-C10-C9-C8
14	C	302	OPC	CBP-CBQ-CBR-CBS
20	G	101	BCR	C9-C10-C11-C12
10	A	309	UMQ	CF-CG-CH-CI
15	C	303	7PH	C31-C32-C33-C34
14	C	302	OPC	OCC-CBK-OBJ-CBI
14	C	302	OPC	CBL-CBK-OBJ-CBI
12	A	308	8K6	C15-C16-C17-C18
14	C	302	OPC	OBJ-CBK-CBL-CBM
14	C	302	OPC	CBR-CBS-CBT-CBU
10	A	309	UMQ	O1'-CA-CB-CC
14	C	302	OPC	CBN-CBO-CBP-CBQ
11	A	306	MYS	C5-C6-C7-C8
10	A	307	UMQ	O5'-C5'-C6'-O6'
12	A	308	8K6	C13-C14-C15-C16
14	B	202	OPC	OCC-CBK-OBJ-CBI
14	C	302	OPC	CAH-OAI-PAJ-OAB
14	B	202	OPC	CBL-CBM-CBN-CBO
10	A	305	UMQ	CB-CA-O1'-C1'

There are no ring outliers.

11 monomers are involved in 42 short contacts:

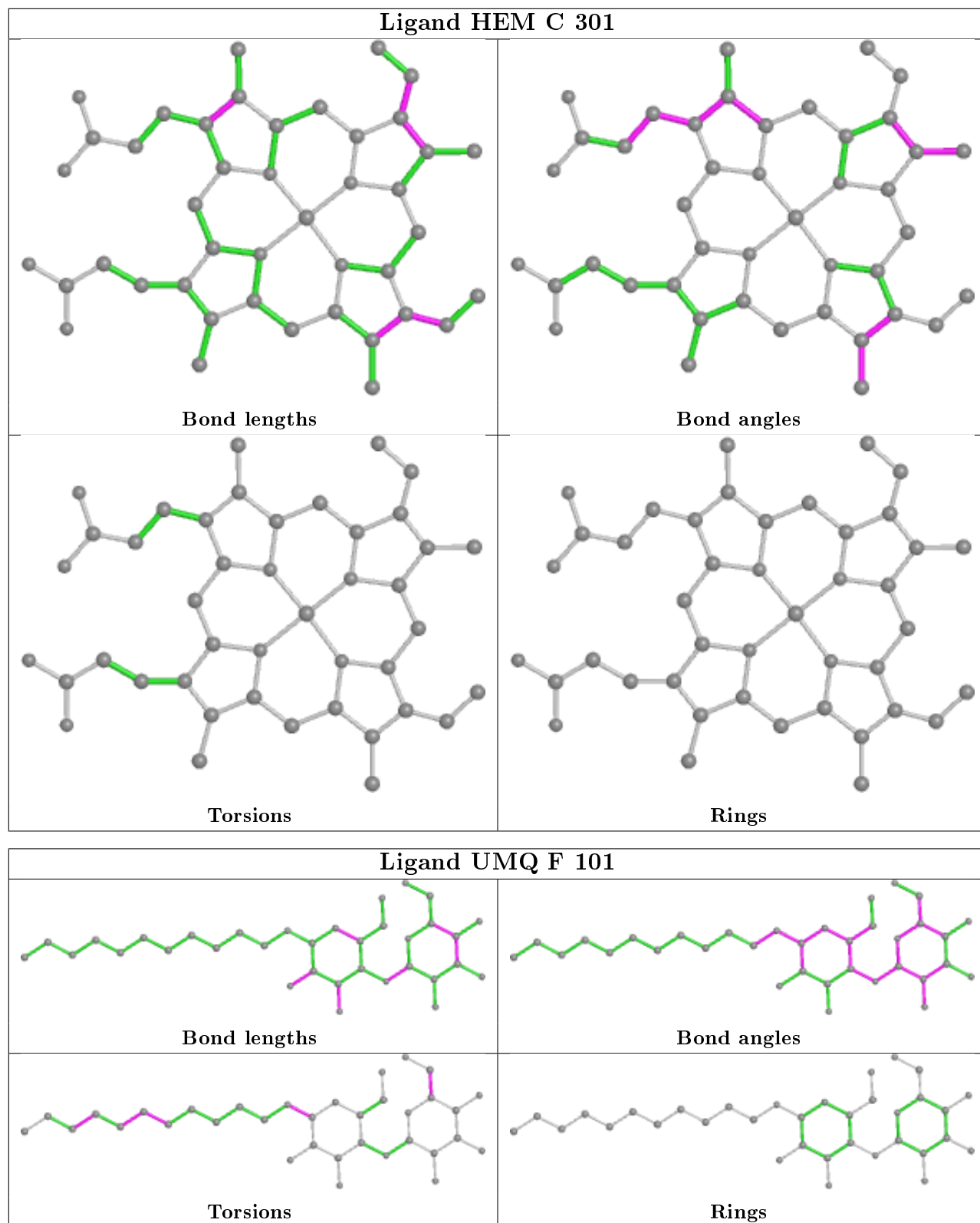
Mol	Chain	Res	Type	Clashes	Symm-Clashes
9	C	301	HEM	7	0
10	F	101	UMQ	1	0

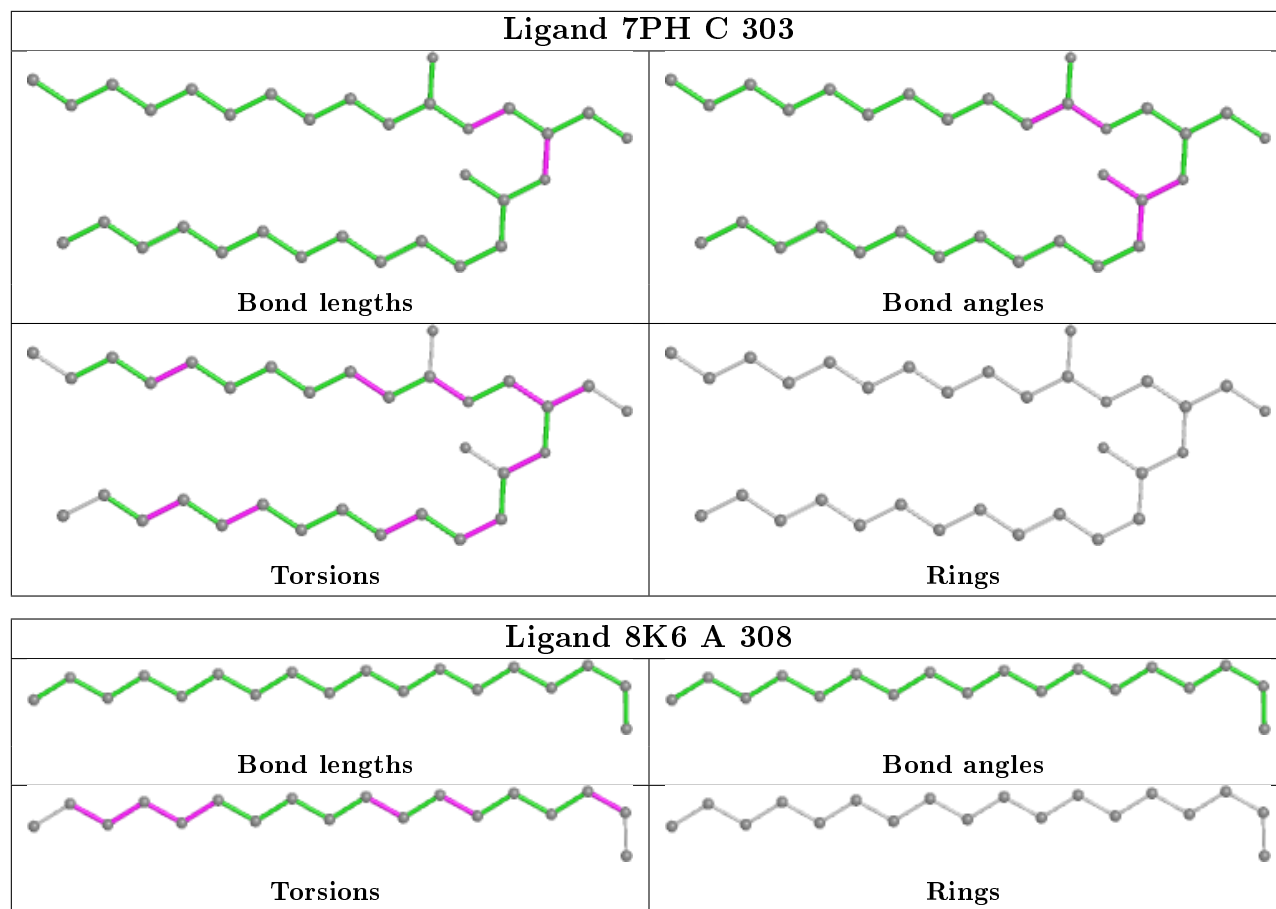
Continued on next page...

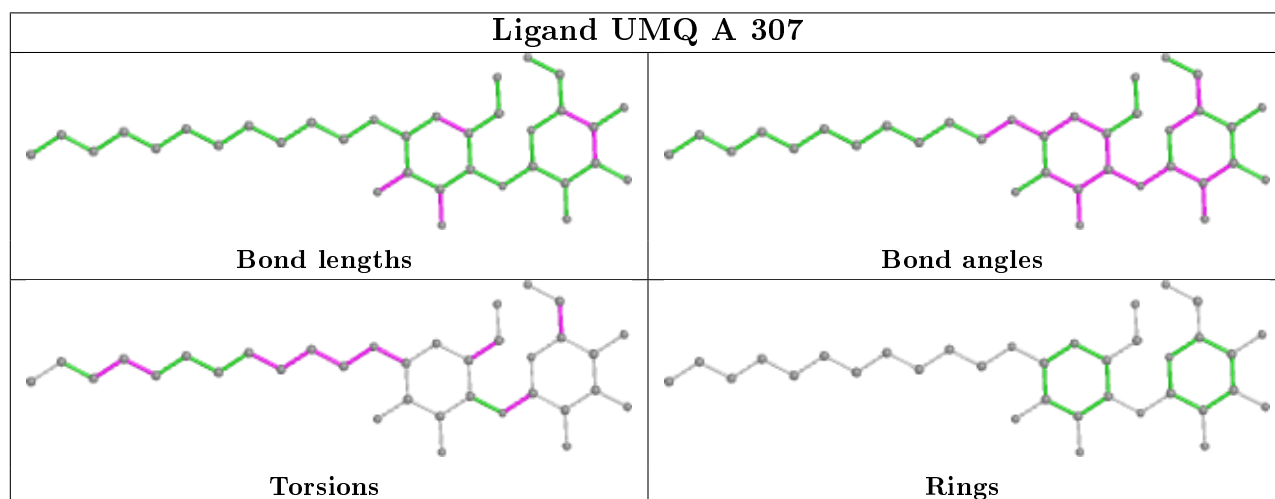
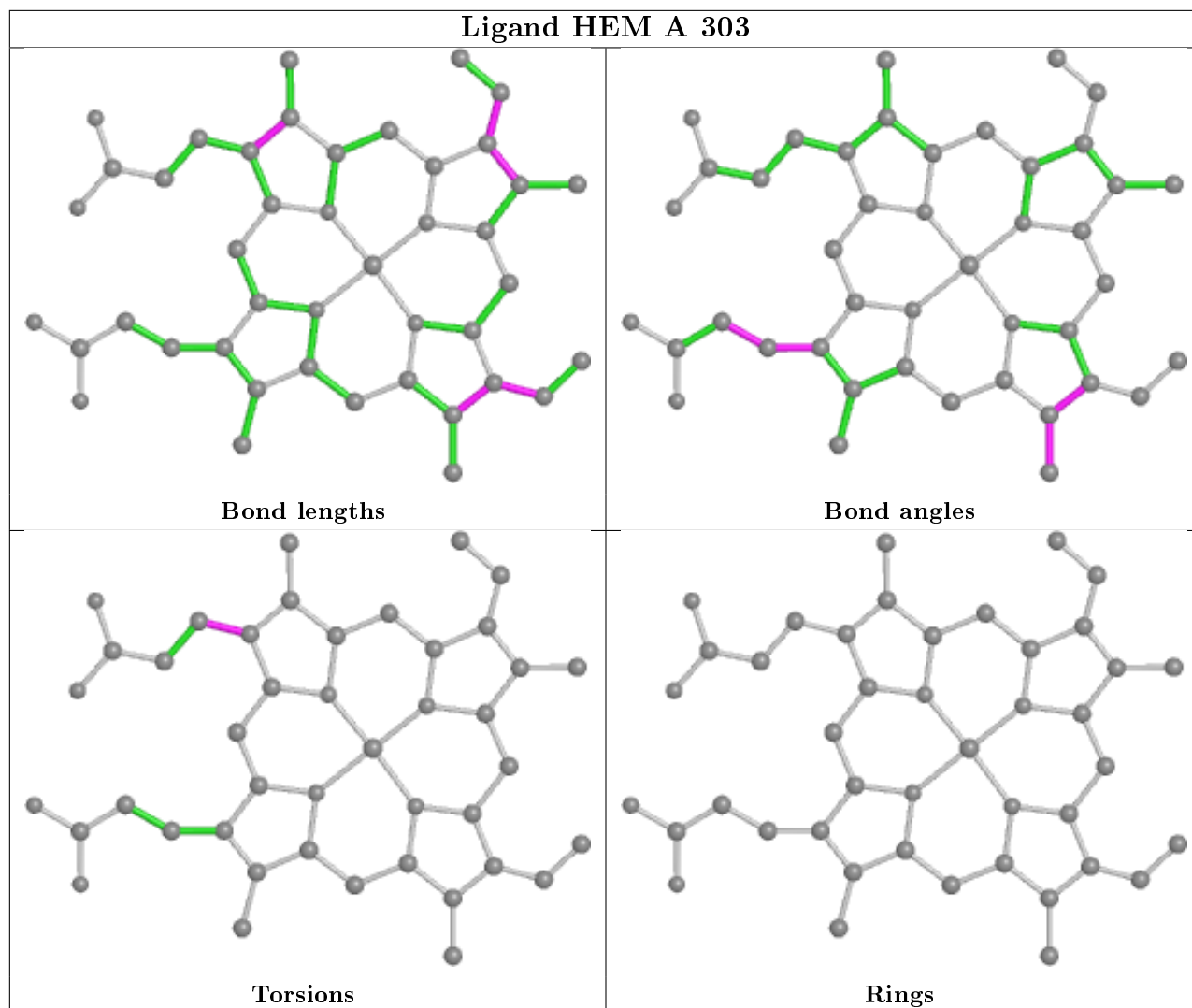
Continued from previous page...

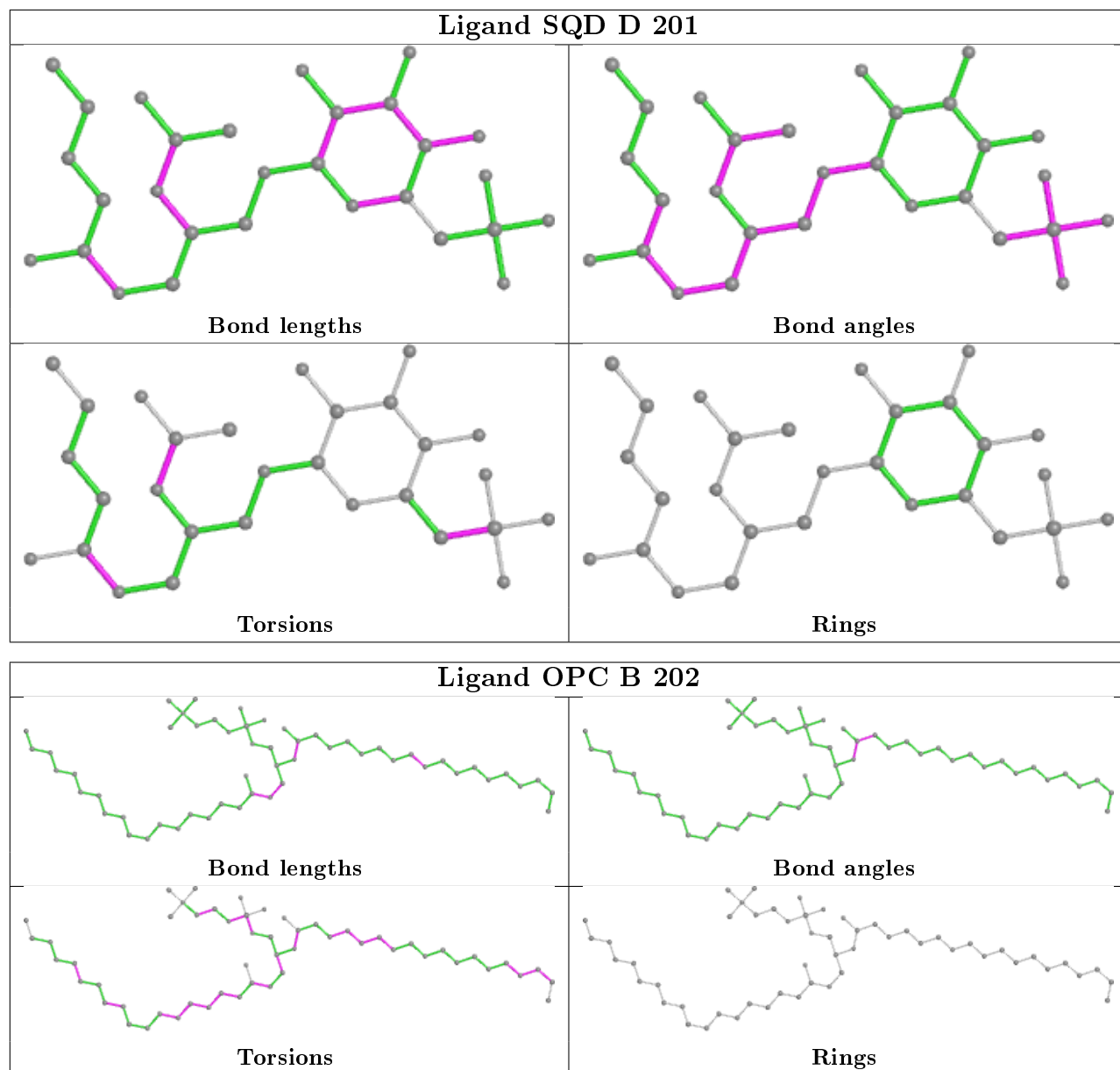
Mol	Chain	Res	Type	Clashes	Symm-Clashes
11	A	306	MYS	1	0
18	D	202	FES	1	0
9	A	303	HEM	10	0
10	A	307	UMQ	5	0
13	B	201	CLA	3	0
20	G	101	BCR	5	0
9	A	302	HEM	4	0
9	A	301	HEM	5	0
14	C	302	OPC	2	0

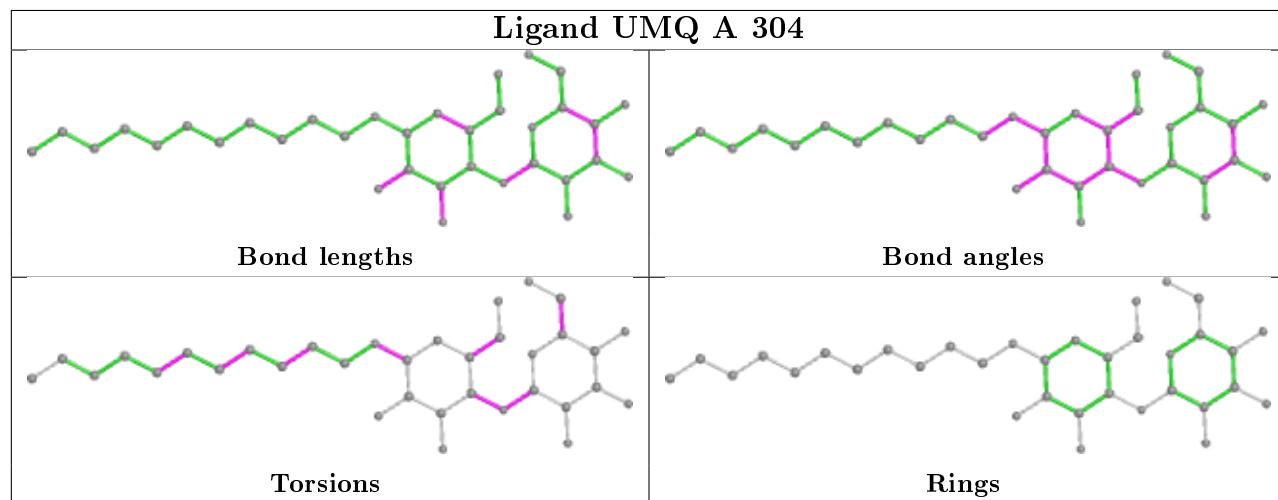
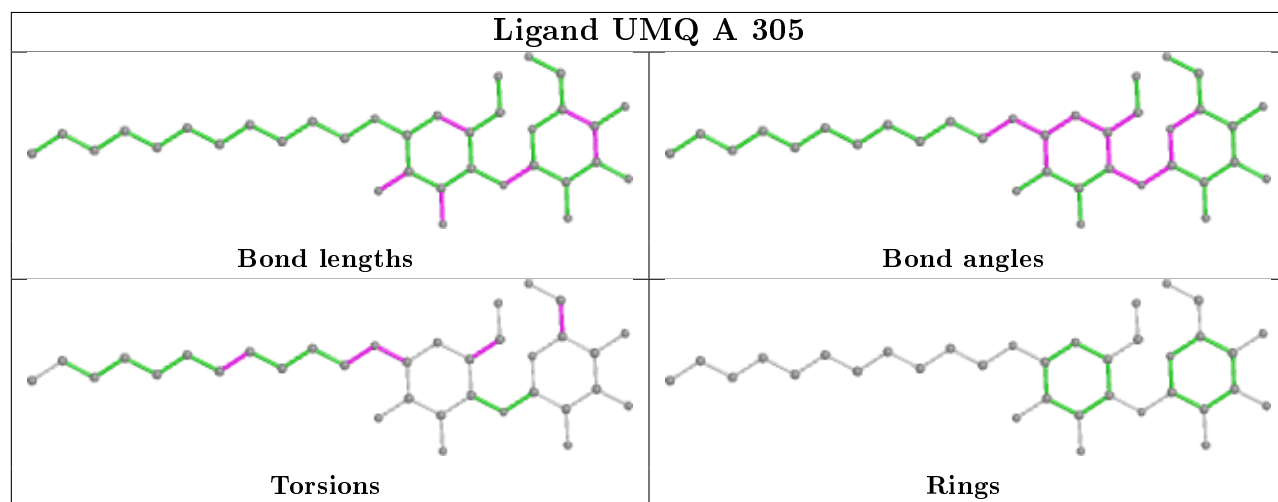
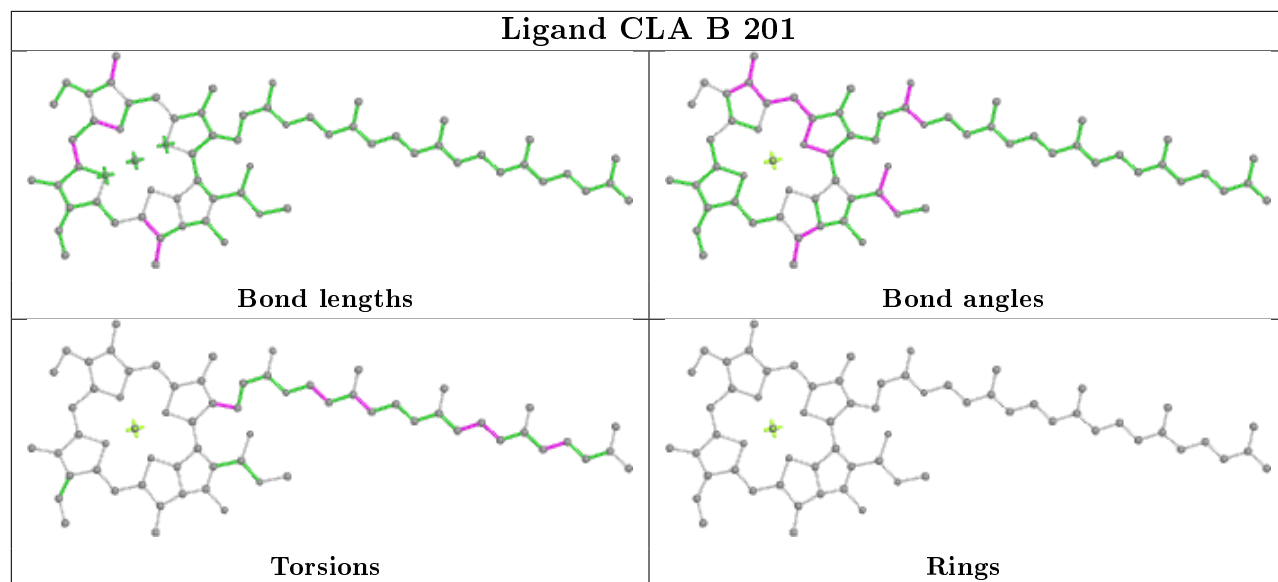
The following is a two-dimensional graphical depiction of Mogul quality analysis of bond lengths, bond angles, torsion angles, and ring geometry for all instances of the Ligand of Interest. In addition, ligands with molecular weight > 250 and outliers as shown on the validation Tables will also be included. For torsion angles, if less than 5% of the Mogul distribution of torsion angles is within 10 degrees of the torsion angle in question, then that torsion angle is considered an outlier. Any bond that is central to one or more torsion angles identified as an outlier by Mogul will be highlighted in the graph. For rings, the root-mean-square deviation (RMSD) between the ring in question and similar rings identified by Mogul is calculated over all ring torsion angles. If the average RMSD is greater than 60 degrees and the minimal RMSD between the ring in question and any Mogul-identified rings is also greater than 60 degrees, then that ring is considered an outlier. The outliers are highlighted in purple. The color gray indicates Mogul did not find sufficient equivalents in the CSD to analyse the geometry.

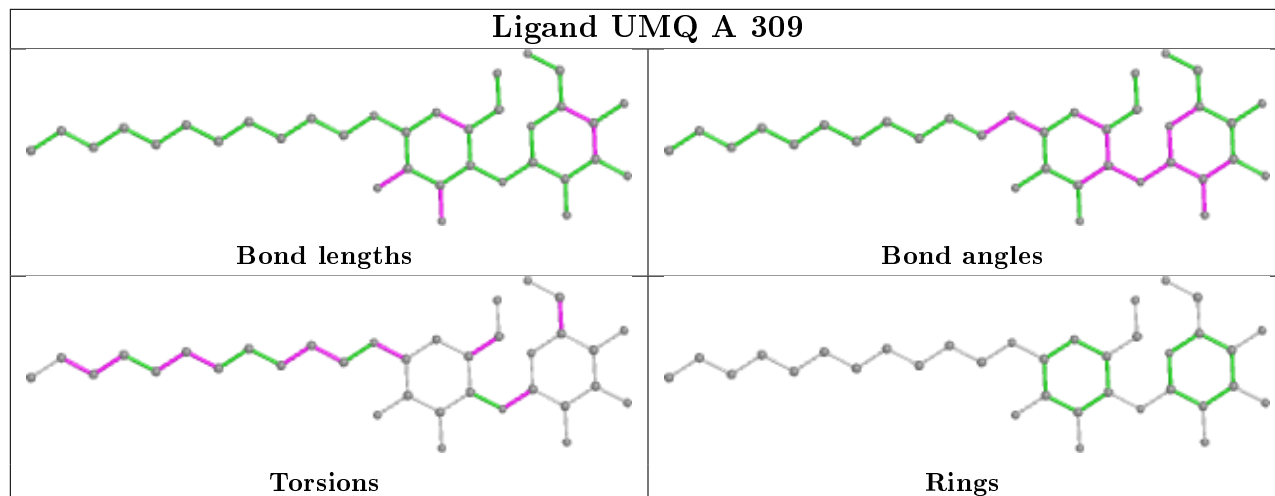
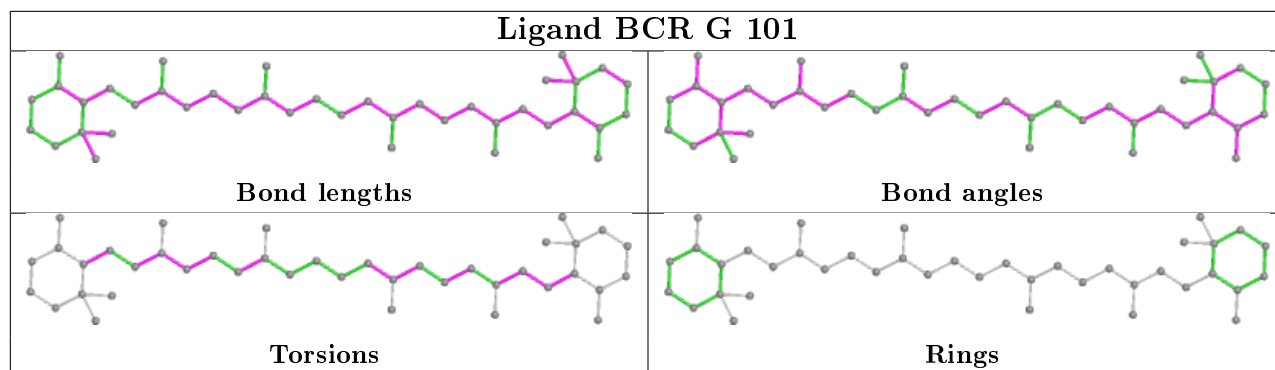


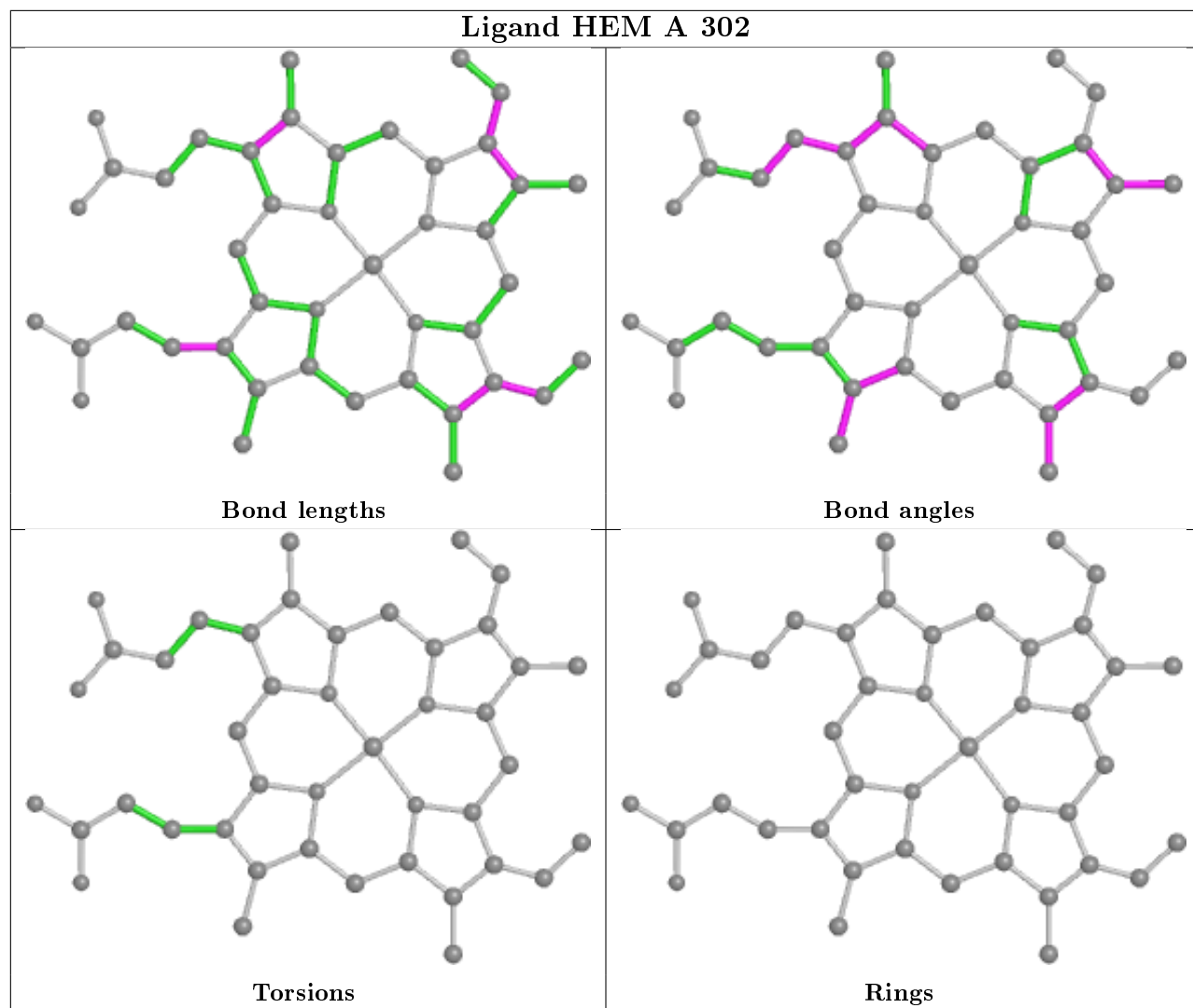


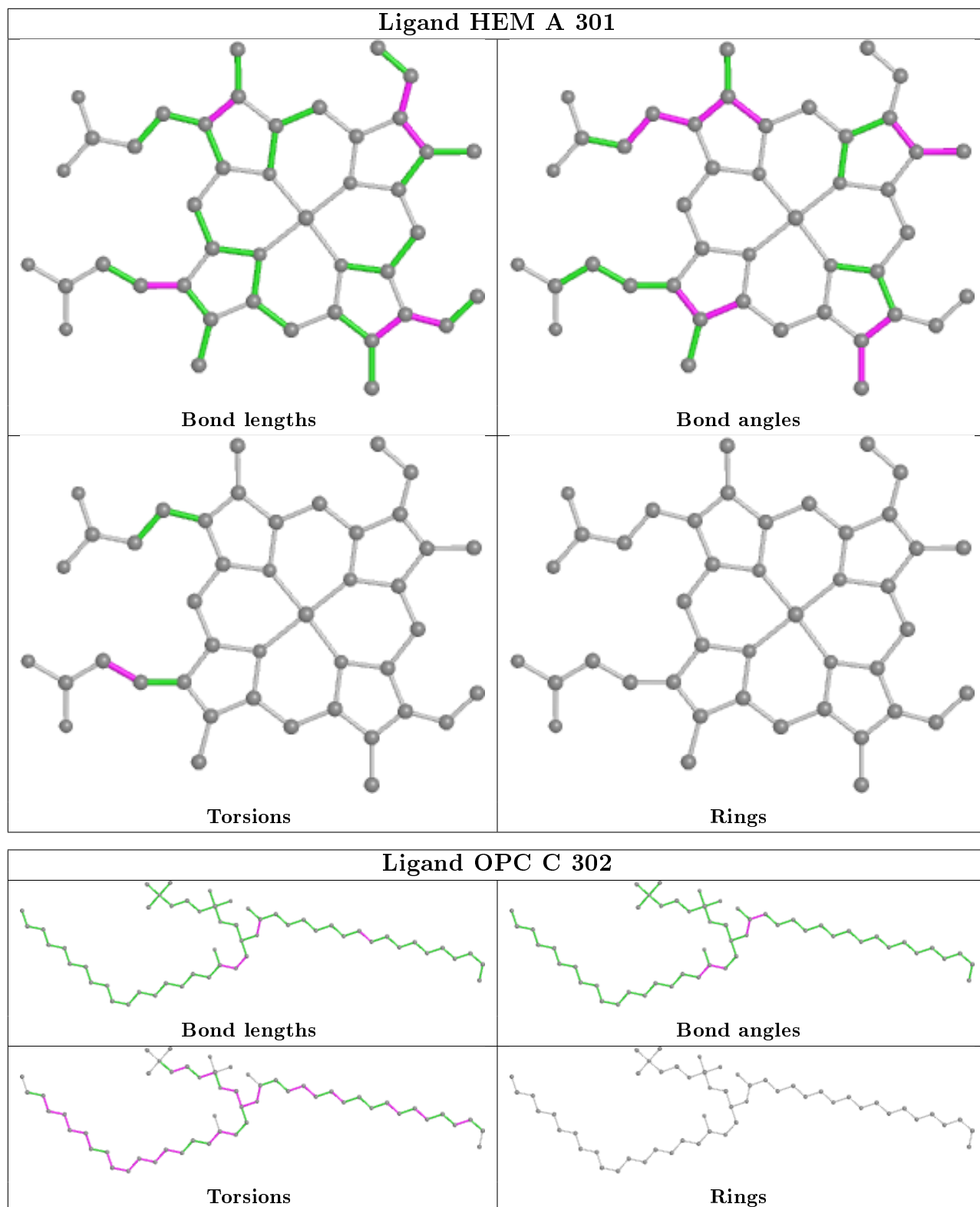












5.7 Other polymers [\(i\)](#)

There are no such residues in this entry.

5.8 Polymer linkage issues

There are no chain breaks in this entry.

6 Fit of model and data

6.1 Protein, DNA and RNA chains

In the following table, the column labelled ‘#RSRZ > 2’ contains the number (and percentage) of RSRZ outliers, followed by percent RSRZ outliers for the chain as percentile scores relative to all X-ray entries and entries of similar resolution. The OWAB column contains the minimum, median, 95th percentile and maximum values of the occupancy-weighted average B-factor per residue. The column labelled ‘Q < 0.9’ lists the number of (and percentage) of residues with an average occupancy less than 0.9.

Mol	Chain	Analysed	<RSRZ>	#RSRZ > 2	OWAB(Å ²)	Q < 0.9
1	A	215/215 (100%)	0.75	29 (13%) 3 2	29, 43, 78, 165	0
2	B	160/160 (100%)	0.94	29 (18%) 1 1	40, 59, 103, 129	0
3	C	289/289 (100%)	1.31	60 (20%) 1 0	42, 66, 168, 188	0
4	D	166/179 (92%)	2.29	72 (43%) 0 0	34, 119, 168, 174	0
5	E	31/31 (100%)	0.54	4 (12%) 3 2	63, 74, 100, 115	0
6	F	32/34 (94%)	0.39	1 (3%) 49 49	55, 67, 106, 126	0
7	G	37/37 (100%)	1.21	8 (21%) 0 0	46, 58, 108, 114	0
8	H	29/29 (100%)	1.15	3 (10%) 6 5	49, 56, 66, 90	0
All	All	959/974 (98%)	1.23	206 (21%) 0 0	29, 63, 160, 188	0

All (206) RSRZ outliers are listed below:

Mol	Chain	Res	Type	RSRZ
1	A	1	MET	12.3
4	D	70	LEU	11.2
3	C	204	GLY	11.2
3	C	199	ILE	11.1
4	D	160	ILE	10.8
2	B	160	PHE	10.4
3	C	224	ALA	10.0
2	B	1	MET	9.8
4	D	69	PHE	9.1
3	C	206	VAL	8.5
3	C	184	ALA	8.0
3	C	205	GLU	7.7
4	D	73	HIS	7.6
3	C	201	THR	7.6
3	C	203	SER	7.5
1	A	2	ALA	7.4

Continued on next page...

Continued from previous page...

Mol	Chain	Res	Type	RSRZ
3	C	227	ALA	7.4
4	D	171	ARG	7.4
4	D	92	VAL	7.3
3	C	196	LEU	7.1
4	D	175	GLU	7.1
4	D	159	LYS	6.9
4	D	72	SER	6.7
4	D	67	SER	6.6
4	D	161	VAL	6.5
4	D	155	THR	6.4
4	D	140	VAL	6.3
3	C	177	THR	6.3
4	D	158	ASP	6.3
4	D	156	GLU	6.2
4	D	64	VAL	6.2
4	D	75	VAL	6.1
4	D	56	ALA	6.1
4	D	63	ASP	5.9
3	C	176	ALA	5.9
4	D	174	GLU	5.9
7	G	37	GLY	5.9
3	C	197	VAL	5.8
4	D	102	TYR	5.7
4	D	157	ASN	5.7
3	C	207	VAL	5.6
4	D	66	VAL	5.6
3	C	180	ILE	5.6
3	C	179	THR	5.5
4	D	91	ILE	5.5
4	D	172	THR	5.4
4	D	141	ARG	5.4
4	D	173	GLY	5.4
3	C	226	THR	5.4
4	D	48	GLY	5.3
6	F	1	MET	5.3
3	C	219	VAL	5.2
3	C	181	SER	5.2
3	C	183	ILE	5.1
3	C	182	LYS	5.1
3	C	209	ASP	5.1
3	C	193	VAL	5.1
2	B	2	ALA	5.0

Continued on next page...

Continued from previous page...

Mol	Chain	Res	Type	RSRZ
3	C	189	GLU	5.0
3	C	208	SER	4.8
3	C	188	GLY	4.8
3	C	225	VAL	4.8
4	D	170	PHE	4.8
3	C	186	GLN	4.7
4	D	179	SER	4.7
4	D	49	GLY	4.6
4	D	54	THR	4.6
4	D	162	LEU	4.6
4	D	65	SER	4.5
3	C	212	PRO	4.4
4	D	99	ILE	4.4
2	B	151	LEU	4.4
3	C	143	HIS	4.4
4	D	84	LEU	4.4
7	G	30	LYS	4.4
3	C	194	LYS	4.3
2	B	159	LEU	4.3
4	D	71	GLU	4.2
5	E	31	LEU	4.2
4	D	55	THR	4.2
4	D	52	GLY	4.2
4	D	166	THR	4.1
4	D	57	LYS	4.1
2	B	50	CYS	4.0
3	C	198	ASP	4.0
3	C	192	SER	4.0
3	C	289	PHE	4.0
4	D	47	ALA	4.0
3	C	202	GLU	4.0
5	E	29	LYS	4.0
3	C	200	LYS	3.9
3	C	195	TYR	3.9
3	C	220	SER	3.9
3	C	190	ASP	3.8
1	A	35	CYS	3.8
2	B	155	LEU	3.8
4	D	169	ASP	3.8
3	C	178	GLY	3.8
2	B	153	LYS	3.7
4	D	50	ALA	3.7

Continued on next page...

Continued from previous page...

Mol	Chain	Res	Type	RSRZ
4	D	62	ASN	3.7
4	D	68	LYS	3.7
3	C	210	THR	3.7
3	C	222	GLY	3.7
4	D	76	GLY	3.7
1	A	95	LEU	3.6
4	D	77	ASP	3.6
3	C	61	VAL	3.6
4	D	51	GLY	3.6
1	A	96	MET	3.5
7	G	1	MET	3.5
1	A	5	TYR	3.5
4	D	145	PRO	3.4
2	B	47	SER	3.4
1	A	92	MET	3.3
4	D	168	THR	3.3
2	B	157	LEU	3.3
3	C	211	ILE	3.3
3	C	281	LYS	3.3
4	D	167	GLU	3.3
3	C	218	ILE	3.3
4	D	165	TRP	3.2
4	D	53	GLY	3.2
4	D	16	ARG	3.2
4	D	98	ALA	3.1
4	D	74	ASN	3.1
3	C	223	GLN	3.1
4	D	119	ALA	3.1
3	C	168	ASN	3.1
4	D	154	LYS	3.1
8	H	1	MET	3.1
3	C	288	ASN	3.0
5	E	30	ILE	3.0
1	A	91	SER	3.0
2	B	46	GLY	2.9
4	D	142	GLY	2.9
3	C	117	GLY	2.9
4	D	17	GLN	2.9
3	C	221	GLU	2.9
4	D	15	ARG	2.9
1	A	4	VAL	2.8
1	A	99	LEU	2.8

Continued on next page...

Continued from previous page...

Mol	Chain	Res	Type	RSRZ
1	A	43	CYS	2.8
2	B	79	TRP	2.8
4	D	153	ALA	2.8
2	B	154	SER	2.7
2	B	51	ILE	2.7
1	A	88	TRP	2.7
1	A	32	ILE	2.7
4	D	143	PRO	2.6
2	B	45	MET	2.6
2	B	54	LEU	2.6
1	A	98	ILE	2.6
3	C	286	GLU	2.6
5	E	2	LEU	2.6
2	B	3	THR	2.5
2	B	156	THR	2.5
1	A	39	ILE	2.5
1	A	89	SER	2.5
1	A	3	ASN	2.5
2	B	152	ASP	2.5
2	B	49	ALA	2.5
2	B	53	ALA	2.4
4	D	138	LYS	2.4
3	C	172	TYR	2.4
4	D	176	PRO	2.4
3	C	93	GLU	2.3
4	D	60	LEU	2.3
4	D	109	THR	2.3
1	A	97	MET	2.3
1	A	94	VAL	2.3
1	A	101	VAL	2.3
2	B	52	VAL	2.3
2	B	77	PRO	2.3
2	B	40	PHE	2.3
7	G	10	VAL	2.3
8	H	15	PHE	2.3
1	A	104	VAL	2.3
1	A	93	MET	2.2
2	B	48	PHE	2.2
1	A	150	ILE	2.2
2	B	43	VAL	2.2
4	D	13	MET	2.2
1	A	33	PHE	2.2

Continued on next page...

Continued from previous page...

Mol	Chain	Res	Type	RSRZ
7	G	33	ASN	2.2
4	D	152	HIS	2.2
3	C	175	ALA	2.2
4	D	14	GLY	2.2
4	D	151	SER	2.2
1	A	100	HIS	2.2
3	C	165	GLU	2.2
3	C	239	GLY	2.2
2	B	72	PRO	2.1
1	A	34	TYR	2.1
2	B	44	ILE	2.1
1	A	90	ALA	2.1
7	G	13	LEU	2.1
2	B	158	GLY	2.1
1	A	36	LEU	2.1
8	H	29	LEU	2.1
3	C	230	ALA	2.1
3	C	156	GLY	2.0
7	G	35	LEU	2.0
7	G	26	TYR	2.0
1	A	30	VAL	2.0
3	C	92	GLU	2.0

6.2 Non-standard residues in protein, DNA, RNA chains [i](#)

There are no non-standard protein/DNA/RNA residues in this entry.

6.3 Carbohydrates [i](#)

There are no monosaccharides in this entry.

6.4 Ligands [i](#)

In the following table, the Atoms column lists the number of modelled atoms in the group and the number defined in the chemical component dictionary. The B-factors column lists the minimum, median, 95th percentile and maximum values of B factors of atoms in the group. The column labelled 'Q< 0.9' lists the number of atoms with occupancy less than 0.9.

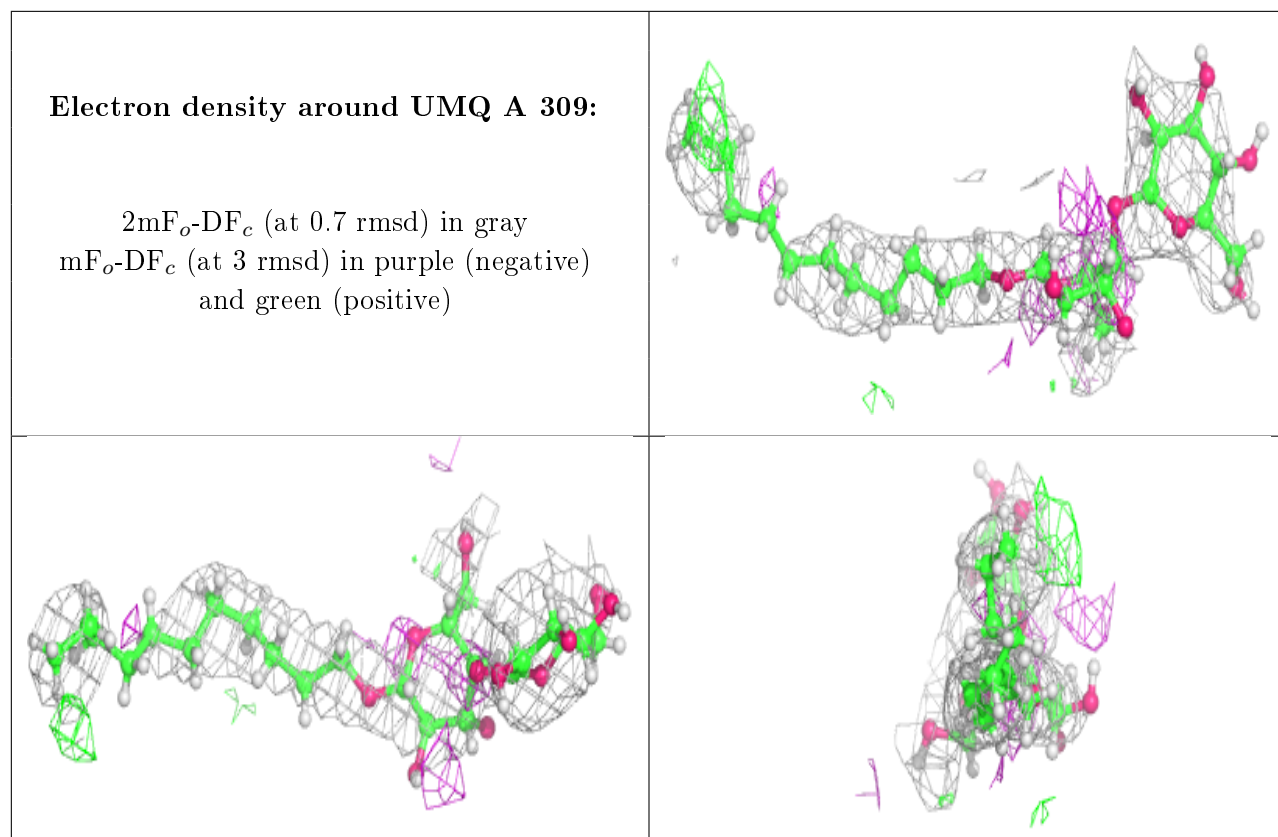
Mol	Type	Chain	Res	Atoms	RSCC	RSR	B-factors(Å ²)	Q<0.9
16	CD	C	304	1/1	-0.76	1.05	206,206,206,206	0

Continued on next page...

Continued from previous page...

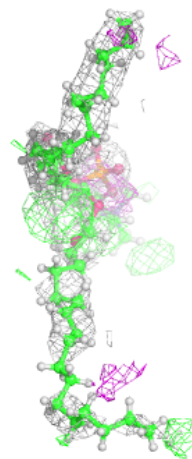
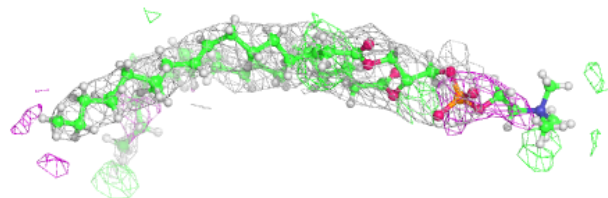
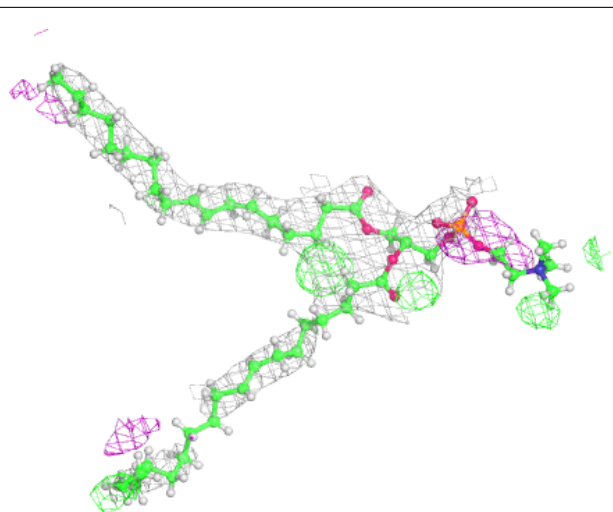
Mol	Type	Chain	Res	Atoms	RSCC	RSR	B-factors(\AA^2)	Q<0.9
10	UMQ	A	309	34/34	0.57	0.41	57,121,187,208	0
14	OPC	C	302	54/55	0.60	0.44	47,96,152,167	0
10	UMQ	F	101	34/34	0.63	0.37	63,128,205,215	0
10	UMQ	A	307	34/34	0.66	0.34	72,111,140,165	0
10	UMQ	A	304	34/34	0.66	0.55	78,129,162,173	0
20	BCR	G	101	40/40	0.67	0.36	40,73,127,138	0
15	7PH	C	303	32/38	0.70	0.30	49,72,135,154	0
11	MYS	A	306	15/15	0.83	0.24	50,68,96,98	0
19	OCT	F	102	8/8	0.83	0.22	61,76,90,99	0
12	8K6	A	308	18/18	0.88	0.15	50,71,84,87	0
10	UMQ	A	305	34/34	0.89	0.29	58,110,148,166	0
14	OPC	B	202	54/55	0.90	0.36	52,93,137,149	0
13	CLA	B	201	65/65	0.90	0.27	47,73,127,132	0
17	SQD	D	201	29/54	0.91	0.22	63,90,129,145	0
18	FES	D	202	4/4	0.94	0.13	79,81,82,95	0
9	HEM	C	301	43/43	0.97	0.24	34,61,83,89	0
9	HEM	A	301	43/43	0.97	0.25	29,39,55,66	0
9	HEM	A	303	43/43	0.97	0.26	40,60,72,79	0
9	HEM	A	302	43/43	0.98	0.27	23,42,53,56	0

The following is a graphical depiction of the model fit to experimental electron density of all instances of the Ligand of Interest. In addition, ligands with molecular weight > 250 and outliers as shown on the geometry validation Tables will also be included. Each fit is shown from different orientation to approximate a three-dimensional view.



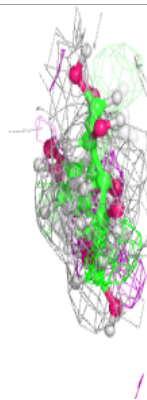
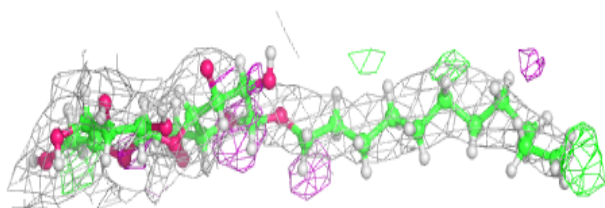
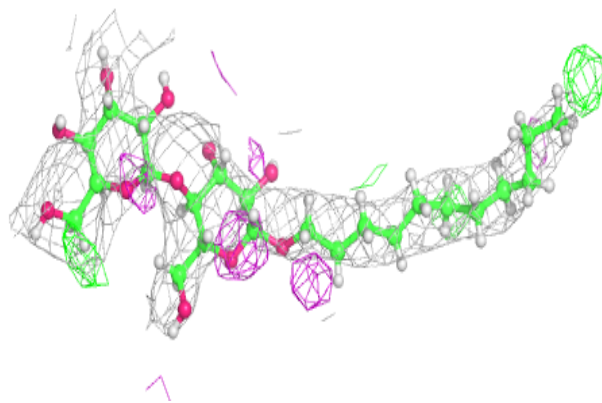
Electron density around OPC C 302:

$2mF_o-DF_c$ (at 0.7 rmsd) in gray
 mF_o-DF_c (at 3 rmsd) in purple (negative)
and green (positive)

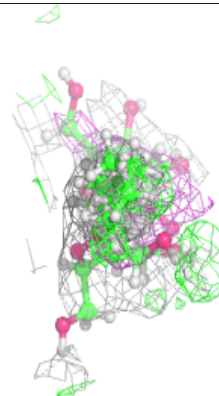
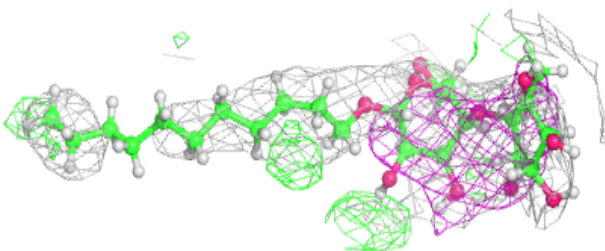
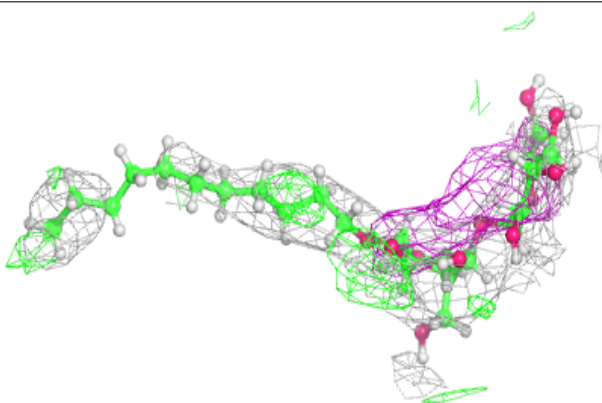


Electron density around UMQ F 101:

$2mF_o-DF_c$ (at 0.7 rmsd) in gray
 mF_o-DF_c (at 3 rmsd) in purple (negative)
and green (positive)

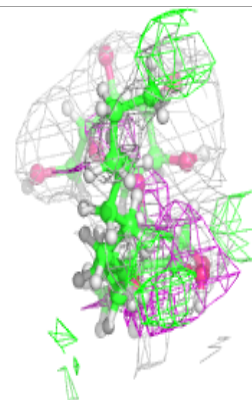
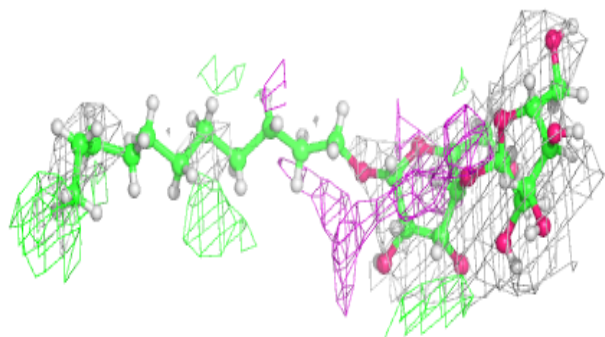
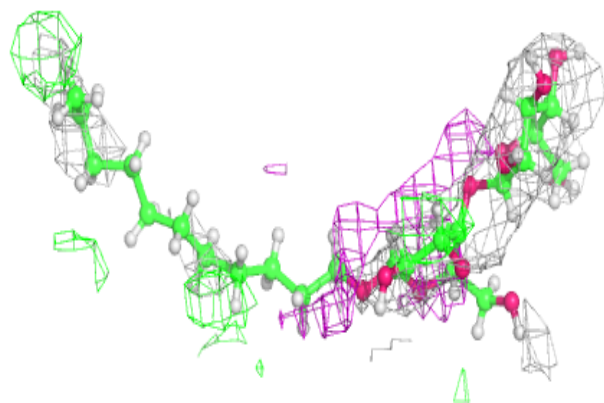
**Electron density around UMQ A 307:**

$2mF_o-DF_c$ (at 0.7 rmsd) in gray
 mF_o-DF_c (at 3 rmsd) in purple (negative)
and green (positive)

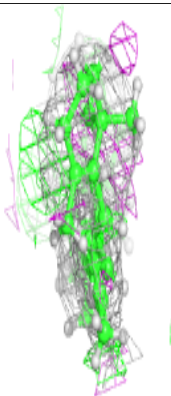
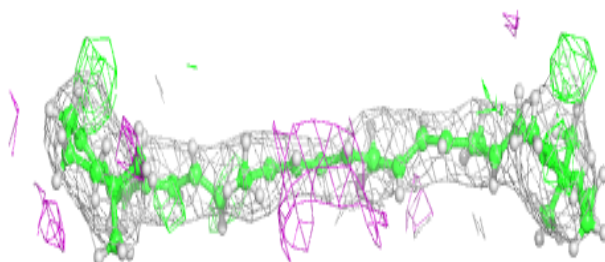
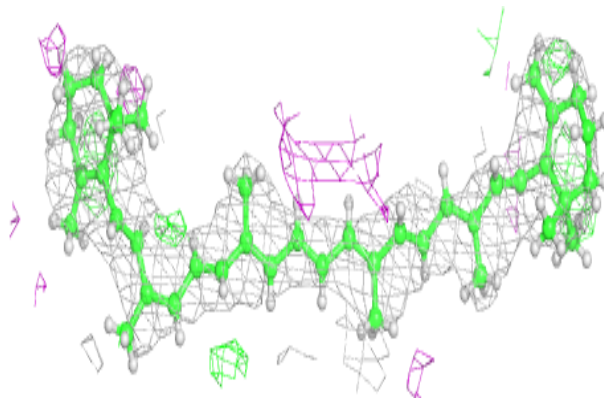


Electron density around UMQ A 304:

$2mF_o-DF_c$ (at 0.7 rmsd) in gray
 mF_o-DF_c (at 3 rmsd) in purple (negative)
and green (positive)

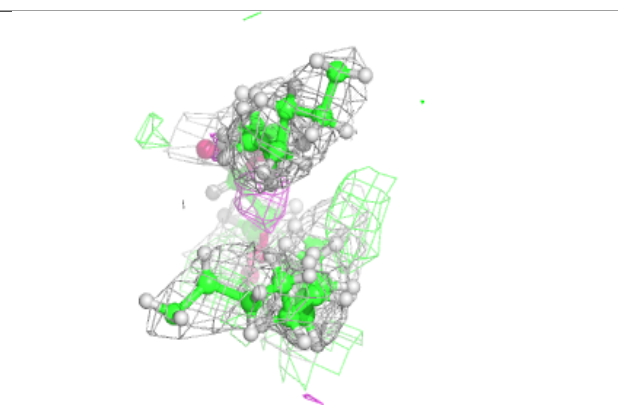
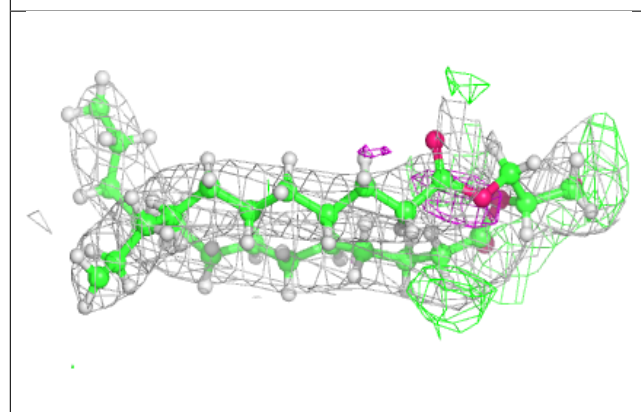
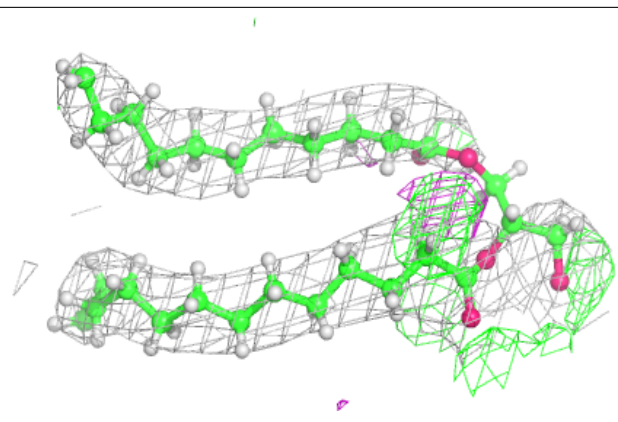
**Electron density around BCR G 101:**

$2mF_o-DF_c$ (at 0.7 rmsd) in gray
 mF_o-DF_c (at 3 rmsd) in purple (negative)
and green (positive)

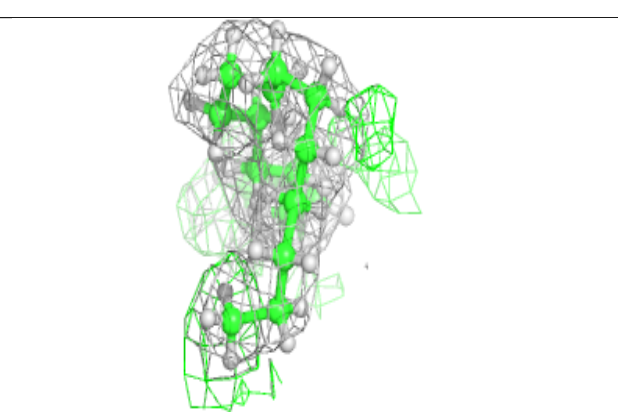
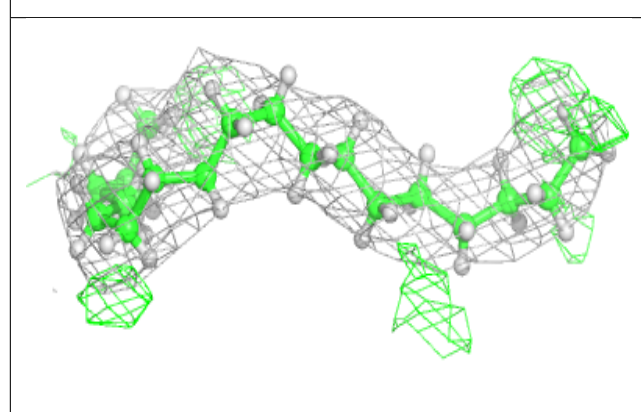
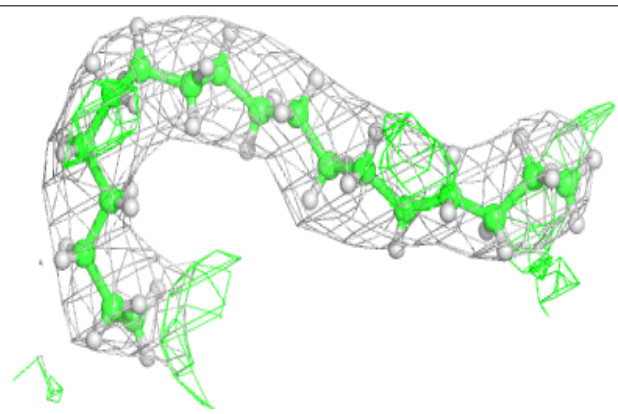


Electron density around 7PH C 303:

$2mF_o-DF_c$ (at 0.7 rmsd) in gray
 mF_o-DF_c (at 3 rmsd) in purple (negative)
and green (positive)

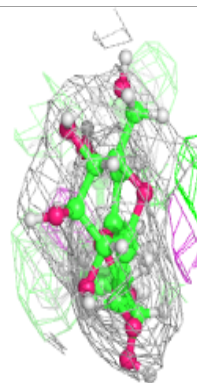
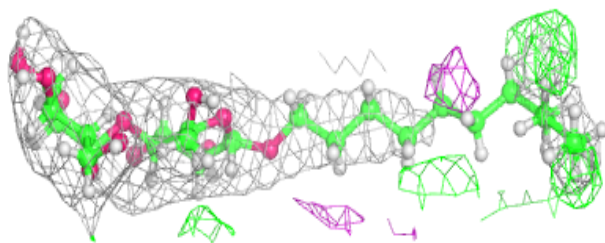
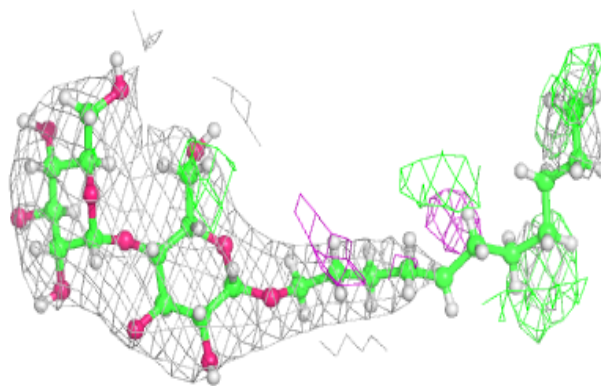
**Electron density around 8K6 A 308:**

$2mF_o-DF_c$ (at 0.7 rmsd) in gray
 mF_o-DF_c (at 3 rmsd) in purple (negative)
and green (positive)

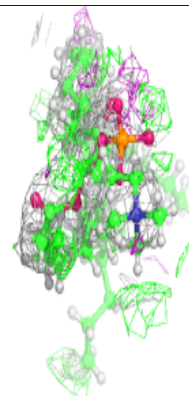
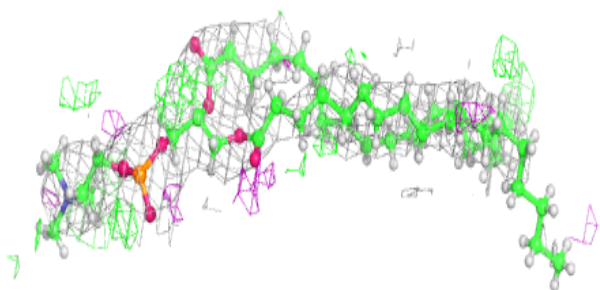
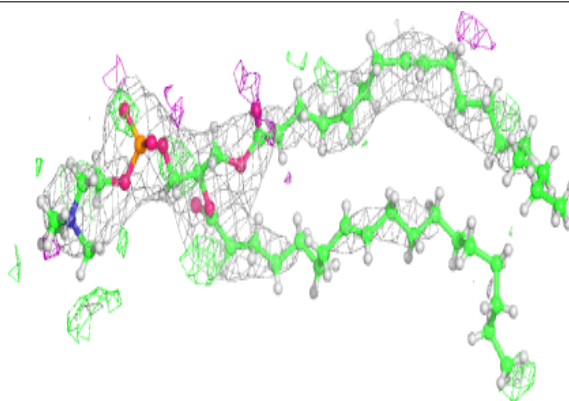


Electron density around UMQ A 305:

$2mF_o-DF_c$ (at 0.7 rmsd) in gray
 mF_o-DF_c (at 3 rmsd) in purple (negative)
and green (positive)

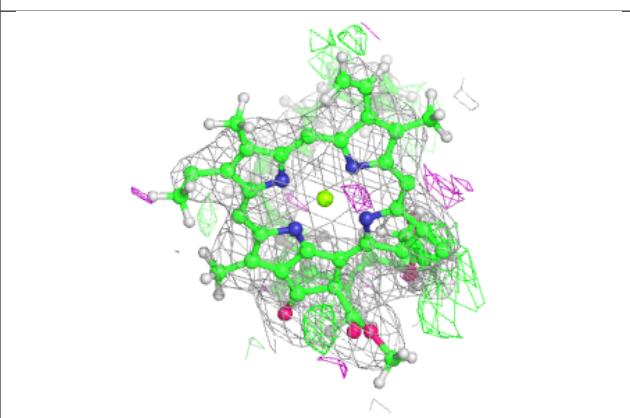
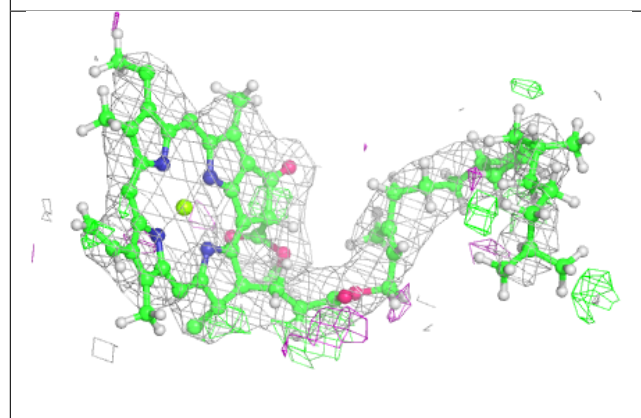
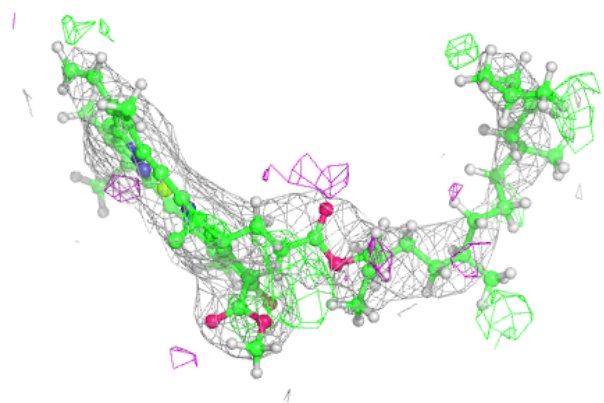
**Electron density around OPC B 202:**

$2mF_o-DF_c$ (at 0.7 rmsd) in gray
 mF_o-DF_c (at 3 rmsd) in purple (negative)
and green (positive)

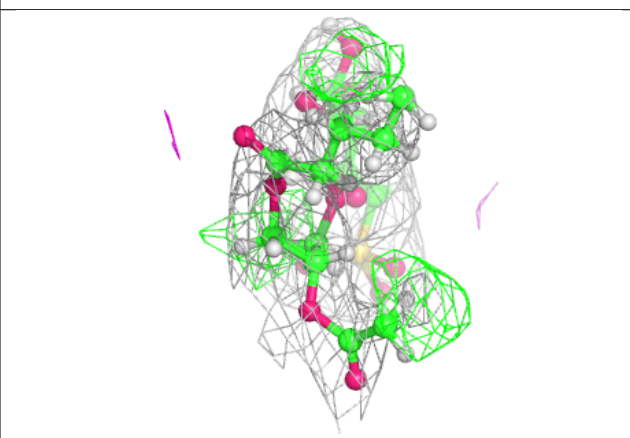
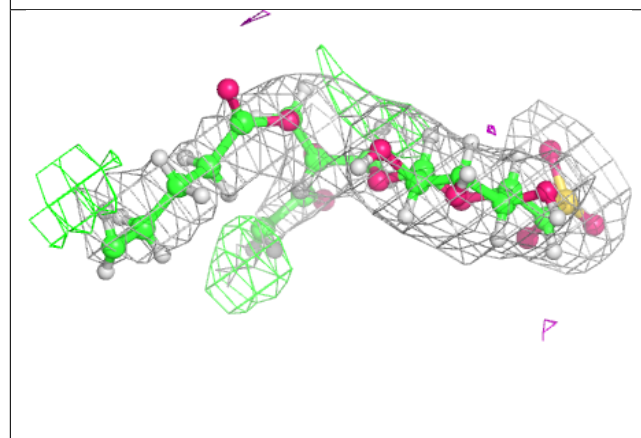
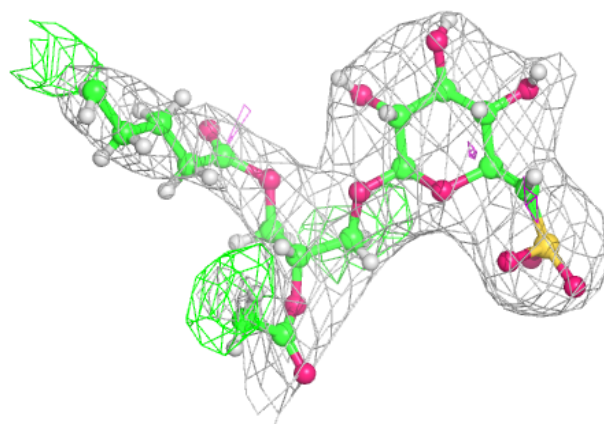


Electron density around CLA B 201:

$2mF_o-DF_c$ (at 0.7 rmsd) in gray
 mF_o-DF_c (at 3 rmsd) in purple (negative)
and green (positive)

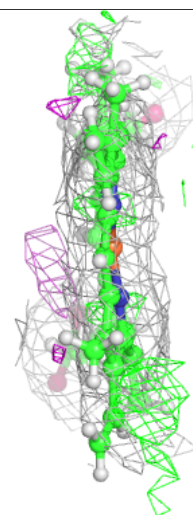
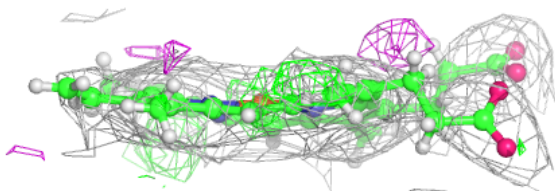
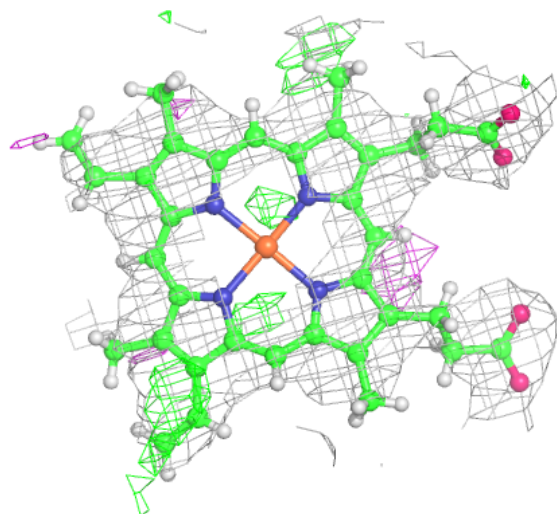
**Electron density around SQD D 201:**

$2mF_o-DF_c$ (at 0.7 rmsd) in gray
 mF_o-DF_c (at 3 rmsd) in purple (negative)
and green (positive)



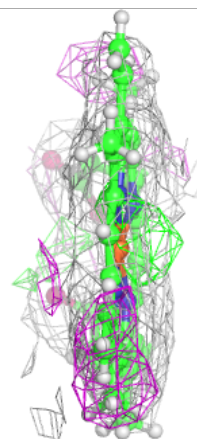
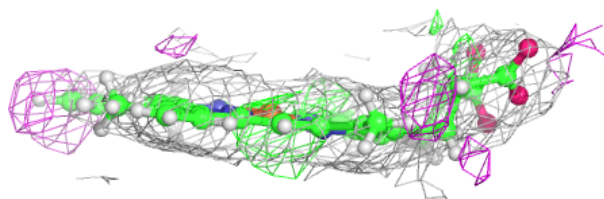
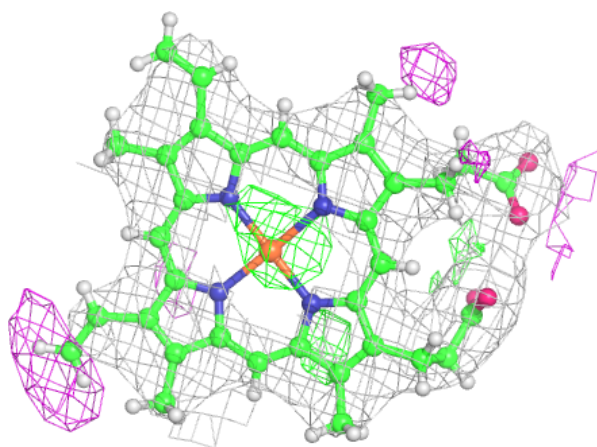
Electron density around HEM C 301:

$2mF_o-DF_c$ (at 0.7 rmsd) in gray
 mF_o-DF_c (at 3 rmsd) in purple (negative)
and green (positive)



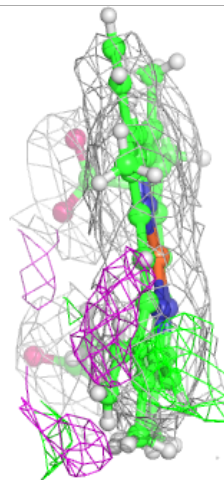
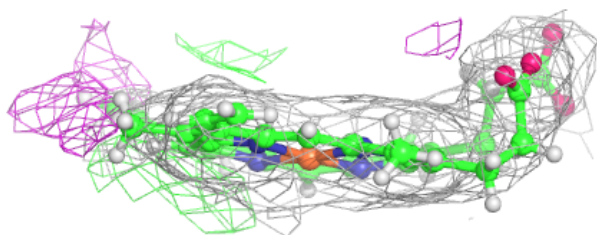
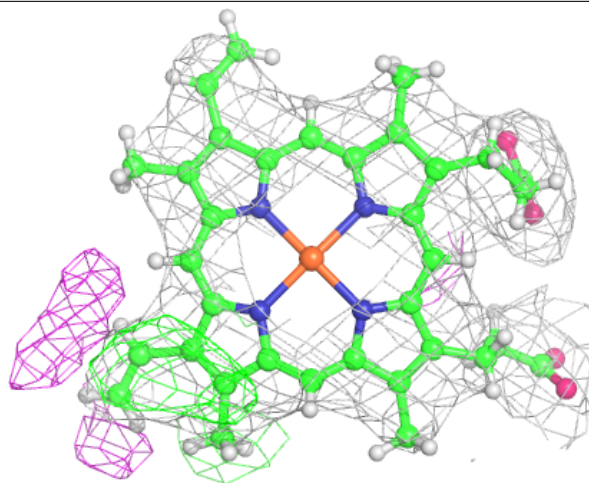
Electron density around HEM A 301:

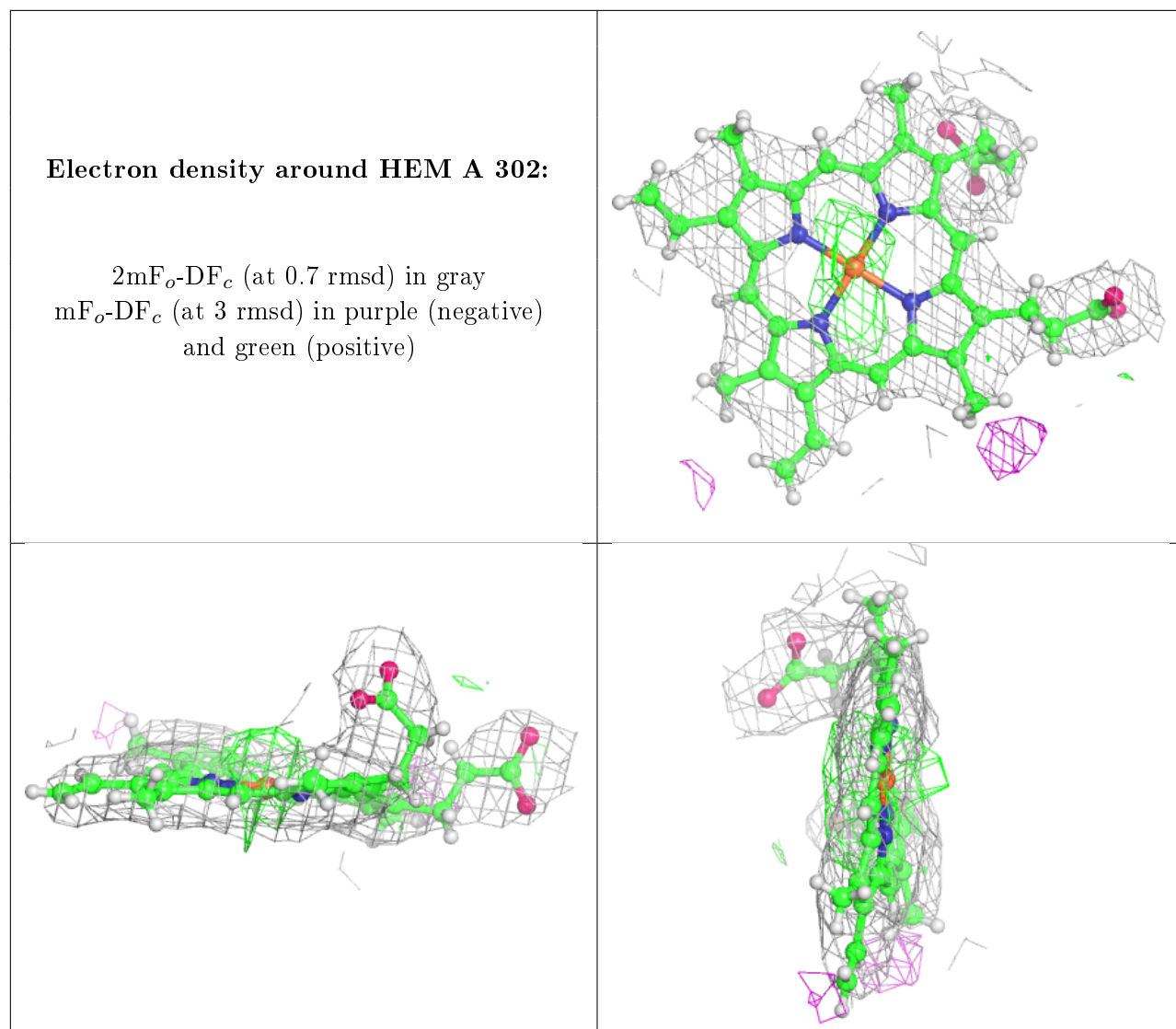
$2mF_o-DF_c$ (at 0.7 rmsd) in gray
 mF_o-DF_c (at 3 rmsd) in purple (negative)
and green (positive)



Electron density around HEM A 303:

$2mF_o-DF_c$ (at 0.7 rmsd) in gray
 mF_o-DF_c (at 3 rmsd) in purple (negative)
and green (positive)





6.5 Other polymers ⓘ

There are no such residues in this entry.