



# Full wwPDB X-ray Structure Validation Report ⓘ

Aug 20, 2023 – 06:39 AM EDT

PDB ID : 2H6F  
Title : Protein Farnesyltransferase Complexed with a Farnesylated DDPTASACVLS Peptide Product at 1.5Å Resolution  
Authors : Terry, K.L.; Beese, L.S.  
Deposited on : 2006-05-31  
Resolution : 1.50 Å(reported)

This is a Full wwPDB X-ray Structure Validation Report for a publicly released PDB entry.

We welcome your comments at [validation@mail.wwpdb.org](mailto:validation@mail.wwpdb.org)

A user guide is available at

<https://www.wwpdb.org/validation/2017/XrayValidationReportHelp>

with specific help available everywhere you see the ⓘ symbol.

The types of validation reports are described at

<http://www.wwpdb.org/validation/2017/FAQs#types>.

---

The following versions of software and data (see [references ⓘ](#)) were used in the production of this report:

MolProbity : 4.02b-467  
Mogul : 1.8.5 (274361), CSD as541be (2020)  
Xtriage (Phenix) : 1.13  
EDS : 2.35  
Percentile statistics : 20191225.v01 (using entries in the PDB archive December 25th 2019)  
Refmac : 5.8.0158  
CCP4 : 7.0.044 (Gargrove)  
Ideal geometry (proteins) : Engh & Huber (2001)  
Ideal geometry (DNA, RNA) : Parkinson et al. (1996)  
Validation Pipeline (wwPDB-VP) : 2.35

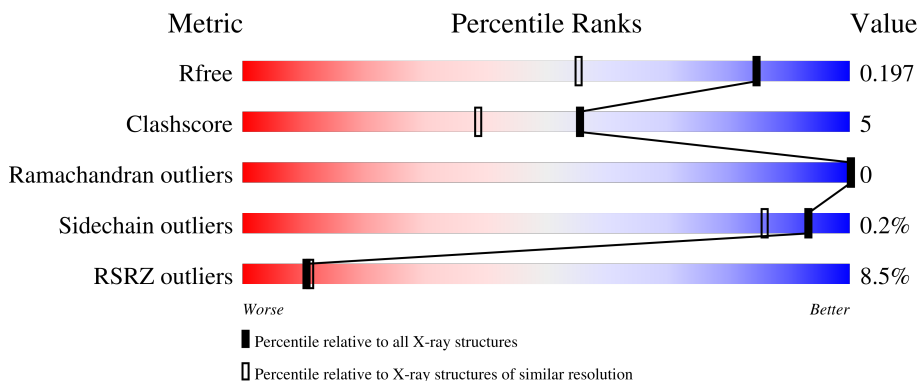
# 1 Overall quality at a glance

The following experimental techniques were used to determine the structure:

*X-RAY DIFFRACTION*

The reported resolution of this entry is 1.50 Å.

Percentile scores (ranging between 0-100) for global validation metrics of the entry are shown in the following graphic. The table shows the number of entries on which the scores are based.



Metric	Whole archive (#Entries)	Similar resolution (#Entries, resolution range(Å))
$R_{free}$	130704	2936 (1.50-1.50)
Clashscore	141614	3144 (1.50-1.50)
Ramachandran outliers	138981	3066 (1.50-1.50)
Sidechain outliers	138945	3064 (1.50-1.50)
RSRZ outliers	127900	2884 (1.50-1.50)

The table below summarises the geometric issues observed across the polymeric chains and their fit to the electron density. The red, orange, yellow and green segments of the lower bar indicate the fraction of residues that contain outliers for  $\geq 3$ , 2, 1 and 0 types of geometric quality criteria respectively. A grey segment represents the fraction of residues that are not modelled. The numeric value for each fraction is indicated below the corresponding segment, with a dot representing fractions  $\leq 5\%$ . The upper red bar (where present) indicates the fraction of residues that have poor fit to the electron density. The numeric value is given above the bar.

Mol	Chain	Length	Quality of chain
1	A	382	
2	B	437	
3	P	11	
4	C	2	

The following table lists non-polymeric compounds, carbohydrate monomers and non-standard

residues in protein, DNA, RNA chains that are outliers for geometric or electron-density-fit criteria:

Mol	Type	Chain	Res	Chirality	Geometry	Clashes	Electron density
5	ACY	A	3001	-	-	X	-
5	ACY	A	3002	-	-	X	-
5	ACY	B	3003	-	-	X	-
7	FAR	P	2010	-	-	X	-

## 2 Entry composition

There are 8 unique types of molecules in this entry. The entry contains 6717 atoms, of which 0 are hydrogens and 0 are deuteriums.

In the tables below, the ZeroOcc column contains the number of atoms modelled with zero occupancy, the AltConf column contains the number of residues with at least one atom in alternate conformation and the Trace column contains the number of residues modelled with at most 2 atoms.

- Molecule 1 is a protein called Protein farnesyltransferase/geranylgeranyltransferase type I alpha subunit.

Mol	Chain	Residues	Atoms					ZeroOcc	AltConf	Trace
			Total	C	N	O	S			
1	A	315	2683	1711	467	500	5	0	0	0

There are 3 discrepancies between the modelled and reference sequences:

Chain	Residue	Modelled	Actual	Comment	Reference
A	380	GLU	-	cloning artifact	UNP P49354
A	381	GLU	-	cloning artifact	UNP P49354
A	382	PHE	-	cloning artifact	UNP P49354

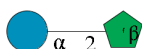
- Molecule 2 is a protein called Protein farnesyltransferase beta subunit.

Mol	Chain	Residues	Atoms					ZeroOcc	AltConf	Trace
			Total	C	N	O	S			
2	B	410	3228	2065	552	589	22	0	0	0

- Molecule 3 is a protein called farnesylated peptide.

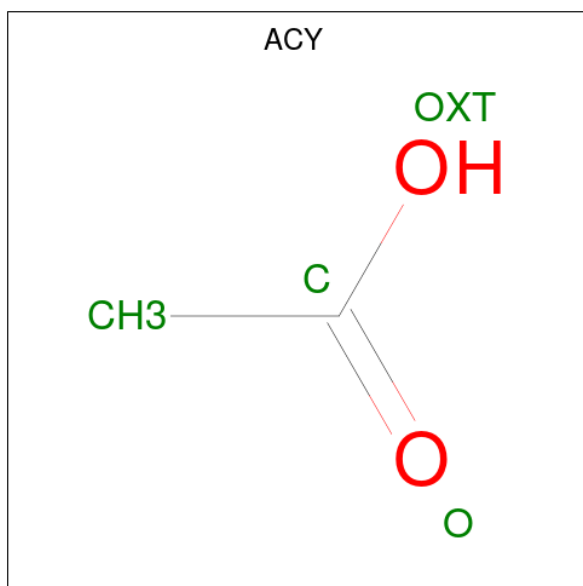
Mol	Chain	Residues	Atoms					ZeroOcc	AltConf	Trace
			Total	C	N	O	S			
3	P	4	28	17	4	6	1	0	0	0

- Molecule 4 is an oligosaccharide called beta-D-fructofuranose-(2-1)-alpha-D-glucopyranose.



Mol	Chain	Residues	Atoms			ZeroOcc	AltConf	Trace
4	C	2	Total	C	O	0	0	0
			23	12	11			

- Molecule 5 is ACETIC ACID (three-letter code: ACY) (formula: C<sub>2</sub>H<sub>4</sub>O<sub>2</sub>).

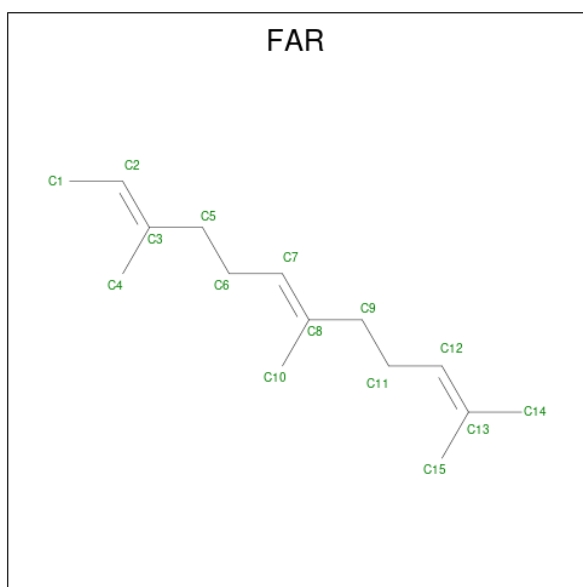


Mol	Chain	Residues	Atoms			ZeroOcc	AltConf
5	A	1	Total	C	O	0	0
			4	2	2		
5	A	1	Total	C	O	0	0
			4	2	2		
5	A	1	Total	C	O	0	0
			4	2	2		
5	B	1	Total	C	O	0	0
			4	2	2		
5	B	1	Total	C	O	0	0
			4	2	2		

- Molecule 6 is ZINC ION (three-letter code: ZN) (formula: Zn).

Mol	Chain	Residues	Atoms		ZeroOcc	AltConf
6	B	1	Total	Zn	0	0
			1	1		

- Molecule 7 is FARNESYL (three-letter code: FAR) (formula: C<sub>15</sub>H<sub>26</sub>).



Mol	Chain	Residues	Atoms	ZeroOcc	AltConf
7	P	1	Total C 15 15	0	0

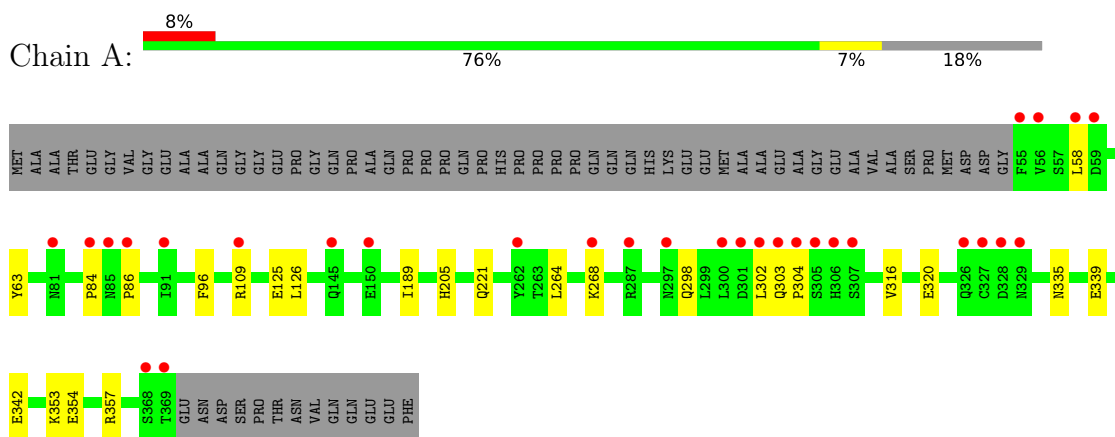
- Molecule 8 is water.

Mol	Chain	Residues	Atoms	ZeroOcc	AltConf
8	A	330	Total O 330 330	0	0
8	B	381	Total O 381 381	0	0
8	P	8	Total O 8 8	0	0

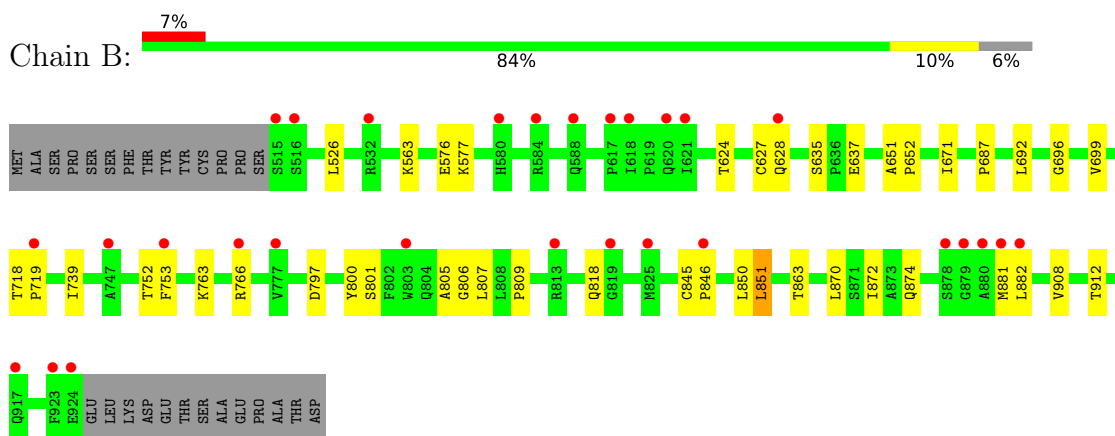
### 3 Residue-property plots [i](#)

These plots are drawn for all protein, RNA, DNA and oligosaccharide chains in the entry. The first graphic for a chain summarises the proportions of the various outlier classes displayed in the second graphic. The second graphic shows the sequence view annotated by issues in geometry and electron density. Residues are color-coded according to the number of geometric quality criteria for which they contain at least one outlier: green = 0, yellow = 1, orange = 2 and red = 3 or more. A red dot above a residue indicates a poor fit to the electron density ( $RSRZ > 2$ ). Stretches of 2 or more consecutive residues without any outlier are shown as a green connector. Residues present in the sample, but not in the model, are shown in grey.

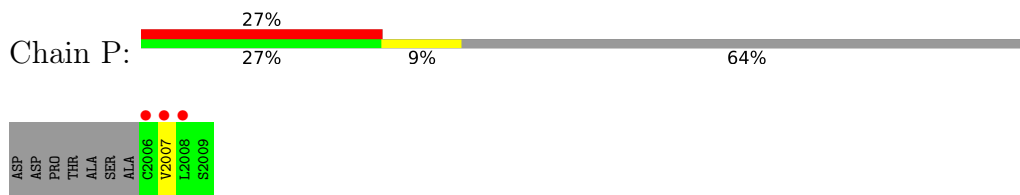
- Molecule 1: Protein farnesyltransferase/geranylgeranyltransferase type I alpha subunit




- Molecule 2: Protein farnesyltransferase beta subunit



- Molecule 3: farnesylated peptide



- Molecule 4: beta-D-fructofuranose-(2-1)-alpha-D-glucopyranose

Chain C:  100%

6L61  
FRU2



## 4 Data and refinement statistics

Property	Value	Source
Space group	P 61	Depositor
Cell constants a, b, c, $\alpha$ , $\beta$ , $\gamma$	178.57Å 178.57Å 64.66Å 90.00° 90.00° 120.00°	Depositor
Resolution (Å)	38.66 – 1.50 38.66 – 1.50	Depositor EDS
% Data completeness (in resolution range)	98.7 (38.66-1.50) 98.9 (38.66-1.50)	Depositor EDS
$R_{merge}$	(Not available)	Depositor
$R_{sym}$	0.06	Depositor
$\langle I/\sigma(I) \rangle$ <sup>1</sup>	2.11 (at 1.50Å)	Xtrriage
Refinement program	CNS	Depositor
R, $R_{free}$	0.190 , 0.203 0.184 , 0.197	Depositor DCC
$R_{free}$ test set	9297 reflections (5.03%)	wwPDB-VP
Wilson B-factor (Å <sup>2</sup> )	15.7	Xtrriage
Anisotropy	0.006	Xtrriage
Bulk solvent $k_{sol}$ (e/Å <sup>3</sup> ), $B_{sol}$ (Å <sup>2</sup> )	0.39 , 45.9	EDS
L-test for twinning <sup>2</sup>	$\langle  L  \rangle = 0.50$ , $\langle L^2 \rangle = 0.33$	Xtrriage
Estimated twinning fraction	0.019 for h,-h-k,-l	Xtrriage
$F_o, F_c$ correlation	0.96	EDS
Total number of atoms	6717	wwPDB-VP
Average B, all atoms (Å <sup>2</sup> )	18.0	wwPDB-VP

Xtrriage's analysis on translational NCS is as follows: *The largest off-origin peak in the Patterson function is 2.72% of the height of the origin peak. No significant pseudotranslation is detected.*

<sup>1</sup>Intensities estimated from amplitudes.

<sup>2</sup>Theoretical values of  $\langle |L| \rangle$ ,  $\langle L^2 \rangle$  for acentric reflections are 0.5, 0.333 respectively for untwinned datasets, and 0.375, 0.2 for perfectly twinned datasets.

## 5 Model quality [i](#)

### 5.1 Standard geometry [i](#)

Bond lengths and bond angles in the following residue types are not validated in this section: FRU, ACY, FAR, ZN, GLC

The Z score for a bond length (or angle) is the number of standard deviations the observed value is removed from the expected value. A bond length (or angle) with  $|Z| > 5$  is considered an outlier worth inspection. RMSZ is the root-mean-square of all Z scores of the bond lengths (or angles).

Mol	Chain	Bond lengths		Bond angles	
		RMSZ	# Z  >5	RMSZ	# Z  >5
1	A	0.26	0/2750	0.49	0/3735
2	B	0.29	0/3317	0.56	0/4508
3	P	0.57	0/27	1.15	1/34 (2.9%)
All	All	0.28	0/6094	0.54	1/8277 (0.0%)

There are no bond length outliers.

All (1) bond angle outliers are listed below:

Mol	Chain	Res	Type	Atoms	Z	Observed(°)	Ideal(°)
3	P	2007	VAL	N-CA-CB	5.67	123.97	111.50

There are no chirality outliers.

There are no planarity outliers.

### 5.2 Too-close contacts [i](#)

In the following table, the Non-H and H(model) columns list the number of non-hydrogen atoms and hydrogen atoms in the chain respectively. The H(added) column lists the number of hydrogen atoms added and optimized by MolProbity. The Clashes column lists the number of clashes within the asymmetric unit, whereas Symm-Clashes lists symmetry-related clashes.

Mol	Chain	Non-H	H(model)	H(added)	Clashes	Symm-Clashes
1	A	2683	0	2601	18	0
2	B	3228	0	3147	25	0
3	P	28	0	28	0	0
4	C	23	0	21	0	0
5	A	12	0	9	15	0
5	B	8	0	6	2	0
6	B	1	0	0	0	0

*Continued on next page...*

Continued from previous page...

Mol	Chain	Non-H	H(model)	H(added)	Clashes	Symm-Clashes
7	P	15	0	24	10	0
8	A	330	0	0	6	0
8	B	381	0	0	4	0
8	P	8	0	0	3	0
All	All	6717	0	5836	60	0

The all-atom clashscore is defined as the number of clashes found per 1000 atoms (including hydrogen atoms). The all-atom clashscore for this structure is 5.

All (60) close contacts within the same asymmetric unit are listed below, sorted by their clash magnitude.

Atom-1	Atom-2	Interatomic distance (Å)	Clash overlap (Å)
5:A:3002:ACY:H2	8:P:1691:HOH:O	1.11	1.29
5:B:3003:ACY:H1	8:B:1551:HOH:O	1.10	1.27
5:B:3003:ACY:CH3	8:B:1551:HOH:O	1.75	0.93
5:A:3002:ACY:H3	7:P:2010:FAR:H102	1.50	0.91
2:B:627:CYS:HB3	2:B:671:ILE:HD11	1.52	0.88
5:A:3002:ACY:H3	7:P:2010:FAR:C10	2.04	0.87
5:A:3002:ACY:CH3	8:P:1691:HOH:O	1.88	0.80
2:B:845:CYS:HB2	2:B:851:LEU:HD21	1.66	0.76
5:A:3001:ACY:H3	7:P:2010:FAR:H42	1.69	0.74
1:A:316:VAL:O	1:A:320:GLU:HG3	1.89	0.72
1:A:221:GLN:HG3	8:A:1180:HOH:O	1.90	0.72
5:A:3002:ACY:CH3	7:P:2010:FAR:C10	2.69	0.71
2:B:766:ARG:HH21	2:B:818:GLN:HG2	1.55	0.70
5:A:3002:ACY:CH3	7:P:2010:FAR:H103	2.26	0.66
5:A:3002:ACY:O	7:P:2010:FAR:C4	2.47	0.63
2:B:881:MET:C	2:B:882:LEU:HD12	2.20	0.62
2:B:577:LYS:HD3	2:B:846:PRO:O	2.00	0.62
5:A:3002:ACY:O	7:P:2010:FAR:H41	1.99	0.61
5:A:3001:ACY:H3	7:P:2010:FAR:C4	2.30	0.61
1:A:298:GLN:O	1:A:302:LEU:HD23	2.03	0.59
1:A:303:GLN:N	1:A:304:PRO:HD2	2.20	0.56
2:B:739:ILE:HB	2:B:752:THR:HA	1.87	0.56
2:B:801:SER:O	2:B:805:ALA:HB3	2.05	0.56
5:A:3001:ACY:H1	8:A:1438:HOH:O	2.06	0.55
1:A:304:PRO:HG2	8:A:1998:HOH:O	2.10	0.52
1:A:342:GLU:CD	1:A:357:ARG:HH12	2.13	0.51
2:B:696:GLY:HA2	8:B:1901:HOH:O	2.10	0.51
2:B:763:LYS:HB2	2:B:763:LYS:NZ	2.26	0.51
1:A:335:ASN:O	1:A:339:GLU:HG3	2.12	0.50

Continued on next page...

Continued from previous page...

Atom-1	Atom-2	Interatomic distance (Å)	Clash overlap (Å)
1:A:58:LEU:HD11	1:A:126:LEU:HG	1.94	0.50
2:B:692:LEU:HD23	2:B:699:VAL:CG2	2.42	0.49
5:A:3002:ACY:CH3	7:P:2010:FAR:H102	2.30	0.48
2:B:806:GLY:HA2	2:B:872:ILE:HD13	1.96	0.48
2:B:526:LEU:HD13	2:B:563:LYS:HB2	1.95	0.47
2:B:635:SER:OG	2:B:637:GLU:HG2	2.15	0.47
1:A:354:GLU:HB2	8:A:1697:HOH:O	2.14	0.47
2:B:753:PHE:HA	2:B:807:LEU:HD21	1.97	0.47
5:A:3001:ACY:OXT	8:A:1360:HOH:O	2.19	0.47
2:B:624:THR:O	2:B:628:GLN:HG3	2.14	0.47
2:B:908:VAL:O	2:B:912:THR:HG23	2.14	0.46
2:B:627:CYS:CB	2:B:671:ILE:HD11	2.34	0.46
1:A:96:PHE:HA	1:A:126:LEU:HD13	1.99	0.45
2:B:687:PRO:HG2	8:B:1434:HOH:O	2.16	0.45
2:B:718:THR:HB	2:B:719:PRO:HD2	1.99	0.44
5:A:3002:ACY:C	8:P:1691:HOH:O	2.46	0.44
1:A:109:ARG:HG3	8:A:1256:HOH:O	2.16	0.44
2:B:651:ALA:HB3	2:B:652:PRO:CD	2.47	0.44
5:A:3002:ACY:O	7:P:2010:FAR:H42	2.15	0.44
1:A:109:ARG:HH11	1:A:109:ARG:CB	2.32	0.43
1:A:84:PRO:C	1:A:86:PRO:HD3	2.39	0.43
2:B:797:ASP:HB3	2:B:800:TYR:HD1	1.84	0.42
1:A:353:LYS:O	1:A:357:ARG:HG2	2.19	0.42
1:A:58:LEU:HD23	1:A:63:TYR:CZ	2.54	0.42
1:A:264:LEU:O	1:A:268:LYS:HG3	2.19	0.42
2:B:870:LEU:O	2:B:874:GLN:HG3	2.20	0.41
2:B:576:GLU:OE1	2:B:576:GLU:HA	2.20	0.41
1:A:58:LEU:HB2	1:A:125:GLU:OE1	2.21	0.41
1:A:189:ILE:HD11	1:A:205:HIS:HD2	1.86	0.40
2:B:850:LEU:HB2	2:B:863:THR:HA	2.02	0.40
2:B:806:GLY:O	2:B:809:PRO:HD2	2.21	0.40

There are no symmetry-related clashes.

## 5.3 Torsion angles

### 5.3.1 Protein backbone

In the following table, the Percentiles column shows the percent Ramachandran outliers of the chain as a percentile score with respect to all X-ray entries followed by that with respect to entries of similar resolution.

The Analysed column shows the number of residues for which the backbone conformation was analysed, and the total number of residues.

Mol	Chain	Analysed	Favoured	Allowed	Outliers	Percentiles	
1	A	313/382 (82%)	301 (96%)	12 (4%)	0	100	100
2	B	408/437 (93%)	402 (98%)	6 (2%)	0	100	100
3	P	2/11 (18%)	2 (100%)	0	0	100	100
All	All	723/830 (87%)	705 (98%)	18 (2%)	0	100	100

There are no Ramachandran outliers to report.

### 5.3.2 Protein sidechains [i](#)

In the following table, the Percentiles column shows the percent sidechain outliers of the chain as a percentile score with respect to all X-ray entries followed by that with respect to entries of similar resolution.

The Analysed column shows the number of residues for which the sidechain conformation was analysed, and the total number of residues.

Mol	Chain	Analysed	Rotameric	Outliers	Percentiles	
1	A	294/344 (86%)	294 (100%)	0	100	100
2	B	346/370 (94%)	345 (100%)	1 (0%)	92	85
3	P	4/9 (44%)	4 (100%)	0	100	100
All	All	644/723 (89%)	643 (100%)	1 (0%)	93	86

All (1) residues with a non-rotameric sidechain are listed below:

Mol	Chain	Res	Type
2	B	851	LEU

Sometimes sidechains can be flipped to improve hydrogen bonding and reduce clashes. All (1) such sidechains are listed below:

Mol	Chain	Res	Type
2	B	818	GLN

### 5.3.3 RNA [i](#)

There are no RNA molecules in this entry.

## 5.4 Non-standard residues in protein, DNA, RNA chains [i](#)

There are no non-standard protein/DNA/RNA residues in this entry.

## 5.5 Carbohydrates [i](#)

2 monosaccharides are modelled in this entry.

In the following table, the Counts columns list the number of bonds (or angles) for which Mogul statistics could be retrieved, the number of bonds (or angles) that are observed in the model and the number of bonds (or angles) that are defined in the Chemical Component Dictionary. The Link column lists molecule types, if any, to which the group is linked. The Z score for a bond length (or angle) is the number of standard deviations the observed value is removed from the expected value. A bond length (or angle) with  $|Z| > 2$  is considered an outlier worth inspection. RMSZ is the root-mean-square of all Z scores of the bond lengths (or angles).

Mol	Type	Chain	Res	Link	Bond lengths			Bond angles		
					Counts	RMSZ	# Z  > 2	Counts	RMSZ	# Z  > 2
4	GLC	C	1	4	11,11,12	3.06	4 (36%)	15,15,17	1.55	3 (20%)
4	FRU	C	2	4	11,12,12	1.54	2 (18%)	10,18,18	0.70	0

In the following table, the Chirals column lists the number of chiral outliers, the number of chiral centers analysed, the number of these observed in the model and the number defined in the Chemical Component Dictionary. Similar counts are reported in the Torsion and Rings columns. '-' means no outliers of that kind were identified.

Mol	Type	Chain	Res	Link	Chirals	Torsions	Rings
4	GLC	C	1	4	-	0/2/19/22	0/1/1/1
4	FRU	C	2	4	-	0/5/24/24	0/1/1/1

All (6) bond length outliers are listed below:

Mol	Chain	Res	Type	Atoms	Z	Observed(Å)	Ideal(Å)
4	C	1	GLC	C2-C3	9.00	1.65	1.52
4	C	2	FRU	O2-C2	3.75	1.47	1.40
4	C	1	GLC	O5-C5	2.52	1.48	1.43
4	C	2	FRU	C1-C2	2.52	1.56	1.52
4	C	1	GLC	C4-C5	2.40	1.58	1.53
4	C	1	GLC	O5-C1	2.03	1.47	1.43

All (3) bond angle outliers are listed below:

Mol	Chain	Res	Type	Atoms	Z	Observed(°)	Ideal(°)
4	C	1	GLC	C1-O5-C5	3.88	117.45	112.19

*Continued on next page...*

Continued from previous page...

Mol	Chain	Res	Type	Atoms	Z	Observed(°)	Ideal(°)
4	C	1	GLC	C1-C2-C3	-2.86	106.15	109.67
4	C	1	GLC	O3-C3-C2	-2.25	105.68	109.99

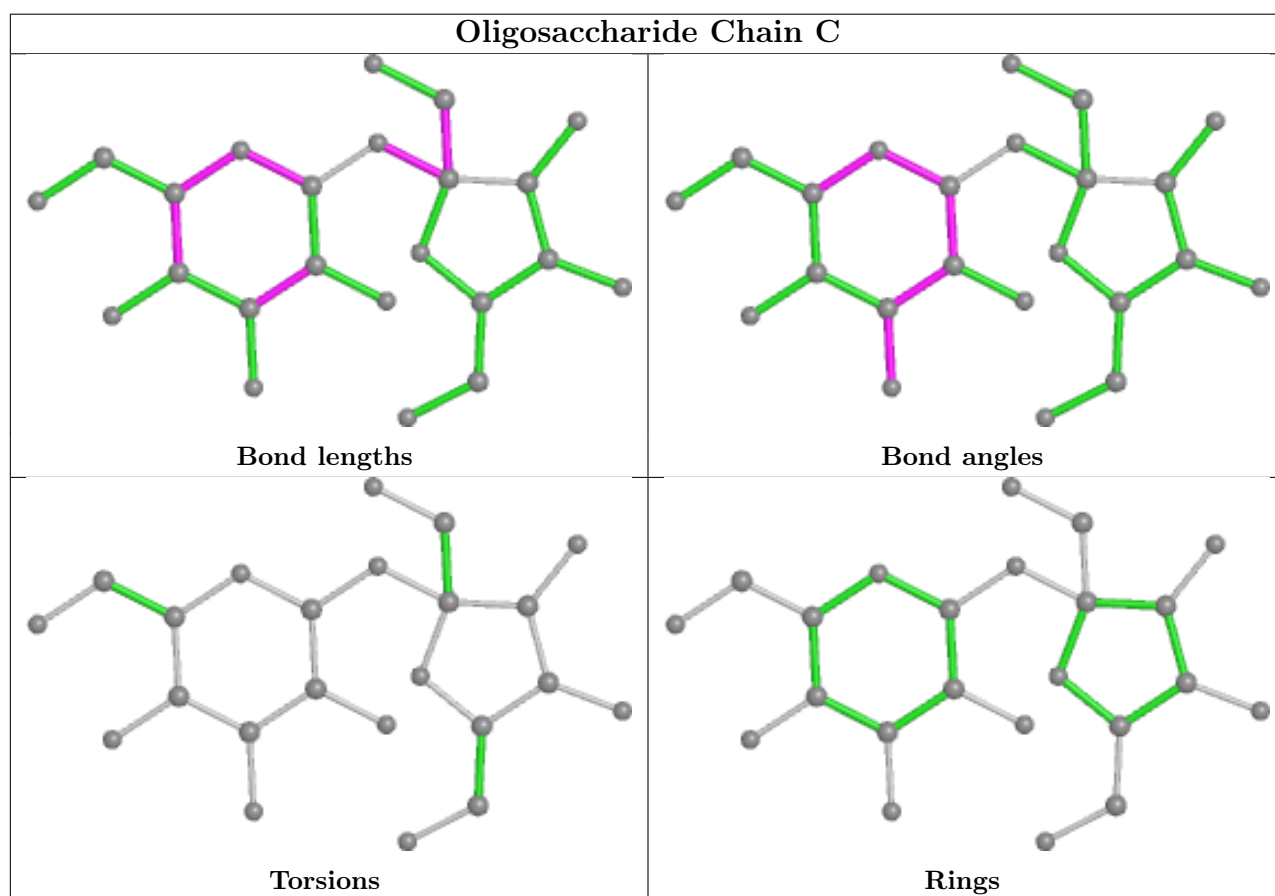
There are no chirality outliers.

There are no torsion outliers.

There are no ring outliers.

No monomer is involved in short contacts.

The following is a two-dimensional graphical depiction of Mogul quality analysis of bond lengths, bond angles, torsion angles, and ring geometry for oligosaccharide.



## 5.6 Ligand geometry [i](#)

Of 7 ligands modelled in this entry, 1 is monoatomic - leaving 6 for Mogul analysis.

In the following table, the Counts columns list the number of bonds (or angles) for which Mogul statistics could be retrieved, the number of bonds (or angles) that are observed in the model and the number of bonds (or angles) that are defined in the Chemical Component Dictionary. The Link column lists molecule types, if any, to which the group is linked. The Z score for a bond

length (or angle) is the number of standard deviations the observed value is removed from the expected value. A bond length (or angle) with  $|Z| > 2$  is considered an outlier worth inspection. RMSZ is the root-mean-square of all Z scores of the bond lengths (or angles).

Mol	Type	Chain	Res	Link	Bond lengths			Bond angles		
					Counts	RMSZ	# Z  > 2	Counts	RMSZ	# Z  > 2
5	ACY	B	3003	-	3,3,3	1.19	0	3,3,3	1.64	1 (33%)
5	ACY	A	3002	-	3,3,3	1.19	0	3,3,3	1.63	1 (33%)
5	ACY	A	3004	-	3,3,3	1.18	0	3,3,3	1.67	1 (33%)
7	FAR	P	2010	3	14,14,14	0.58	0	16,16,16	0.57	0
5	ACY	B	3005	-	3,3,3	1.21	0	3,3,3	1.68	1 (33%)
5	ACY	A	3001	-	3,3,3	1.20	0	3,3,3	1.64	1 (33%)

In the following table, the Chirals column lists the number of chiral outliers, the number of chiral centers analysed, the number of these observed in the model and the number defined in the Chemical Component Dictionary. Similar counts are reported in the Torsion and Rings columns. '-' means no outliers of that kind were identified.

Mol	Type	Chain	Res	Link	Chirals	Torsions	Rings
7	FAR	P	2010	3	-	1/14/14/14	-

There are no bond length outliers.

All (5) bond angle outliers are listed below:

Mol	Chain	Res	Type	Atoms	Z	Observed(°)	Ideal(°)
5	B	3005	ACY	O-C-CH3	-2.31	113.33	122.33
5	A	3004	ACY	O-C-CH3	-2.30	113.37	122.33
5	A	3001	ACY	O-C-CH3	-2.26	113.53	122.33
5	B	3003	ACY	O-C-CH3	-2.25	113.56	122.33
5	A	3002	ACY	O-C-CH3	-2.25	113.58	122.33

There are no chirality outliers.

All (1) torsion outliers are listed below:

Mol	Chain	Res	Type	Atoms
7	P	2010	FAR	C9-C11-C12-C13

There are no ring outliers.

4 monomers are involved in 17 short contacts:

Mol	Chain	Res	Type	Clashes	Symm-Clashes
5	B	3003	ACY	2	0

*Continued on next page...*



*Continued from previous page...*

Mol	Chain	Res	Type	Clashes	Symm-Clashes
5	A	3002	ACY	11	0
7	P	2010	FAR	10	0
5	A	3001	ACY	4	0

## 5.7 Other polymers [i](#)

There are no such residues in this entry.

## 5.8 Polymer linkage issues [i](#)

There are no chain breaks in this entry.

## 6 Fit of model and data

### 6.1 Protein, DNA and RNA chains

In the following table, the column labelled ‘#RSRZ > 2’ contains the number (and percentage) of RSRZ outliers, followed by percent RSRZ outliers for the chain as percentile scores relative to all X-ray entries and entries of similar resolution. The OWAB column contains the minimum, median, 95<sup>th</sup> percentile and maximum values of the occupancy-weighted average B-factor per residue. The column labelled ‘Q < 0.9’ lists the number of (and percentage) of residues with an average occupancy less than 0.9.

Mol	Chain	Analysed	<RSRZ>	#RSRZ>2	OWAB(Å <sup>2</sup> )	Q<0.9
1	A	315/382 (82%)	0.78	30 (9%) <b>8</b> <b>8</b>	11, 19, 33, 48	0
2	B	410/437 (93%)	0.59	29 (7%) <b>16</b> <b>17</b>	9, 14, 24, 34	0
3	P	4/11 (36%)	3.19	3 (75%) <b>0</b> <b>0</b>	13, 16, 22, 25	0
All	All	729/830 (87%)	0.69	62 (8%) <b>10</b> <b>11</b>	9, 16, 28, 48	0

All (62) RSRZ outliers are listed below:

Mol	Chain	Res	Type	RSRZ
1	A	55	PHE	14.9
1	A	369	THR	6.7
1	A	304	PRO	6.3
2	B	515	SER	6.0
1	A	302	LEU	5.8
3	P	2006	CYS	5.4
1	A	306	HIS	5.3
2	B	880	ALA	5.2
1	A	307	SER	5.2
2	B	879	GLY	5.1
1	A	301	ASP	4.9
1	A	328	ASP	4.6
1	A	305	SER	4.5
1	A	368	SER	4.0
2	B	881	MET	3.9
1	A	303	GLN	3.8
2	B	923	PHE	3.6
1	A	109	ARG	3.4
2	B	924	GLU	3.4
2	B	878	SER	3.3
1	A	145	GLN	3.2
1	A	300	LEU	3.2
2	B	825	MET	3.2

*Continued on next page...*

*Continued from previous page...*

<b>Mol</b>	<b>Chain</b>	<b>Res</b>	<b>Type</b>	<b>RSRZ</b>
3	P	2008	LEU	3.2
1	A	326	GLN	3.1
3	P	2007	VAL	3.1
2	B	620	GLN	3.1
1	A	329	ASN	3.0
2	B	882	LEU	2.9
1	A	56	VAL	2.9
1	A	91	ILE	2.9
1	A	327	CYS	2.7
2	B	766	ARG	2.7
2	B	588	GLN	2.7
2	B	813	ARG	2.7
2	B	846	PRO	2.6
2	B	917	GLN	2.6
2	B	532	ARG	2.6
1	A	85	ASN	2.6
2	B	777	VAL	2.5
1	A	59	ASP	2.5
2	B	803	TRP	2.5
2	B	618	ILE	2.5
2	B	621	ILE	2.4
2	B	584	ARG	2.4
2	B	617	PRO	2.4
1	A	81	ASN	2.3
1	A	84	PRO	2.3
2	B	719	PRO	2.3
2	B	516	SER	2.2
1	A	150	GLU	2.2
2	B	753	PHE	2.2
2	B	580	HIS	2.2
1	A	268	LYS	2.2
2	B	819	GLY	2.1
2	B	628	GLN	2.1
2	B	747	ALA	2.1
1	A	297	ASN	2.1
1	A	262	TYR	2.0
1	A	287	ARG	2.0
1	A	58	LEU	2.0
1	A	86	PRO	2.0

## 6.2 Non-standard residues in protein, DNA, RNA chains [i](#)

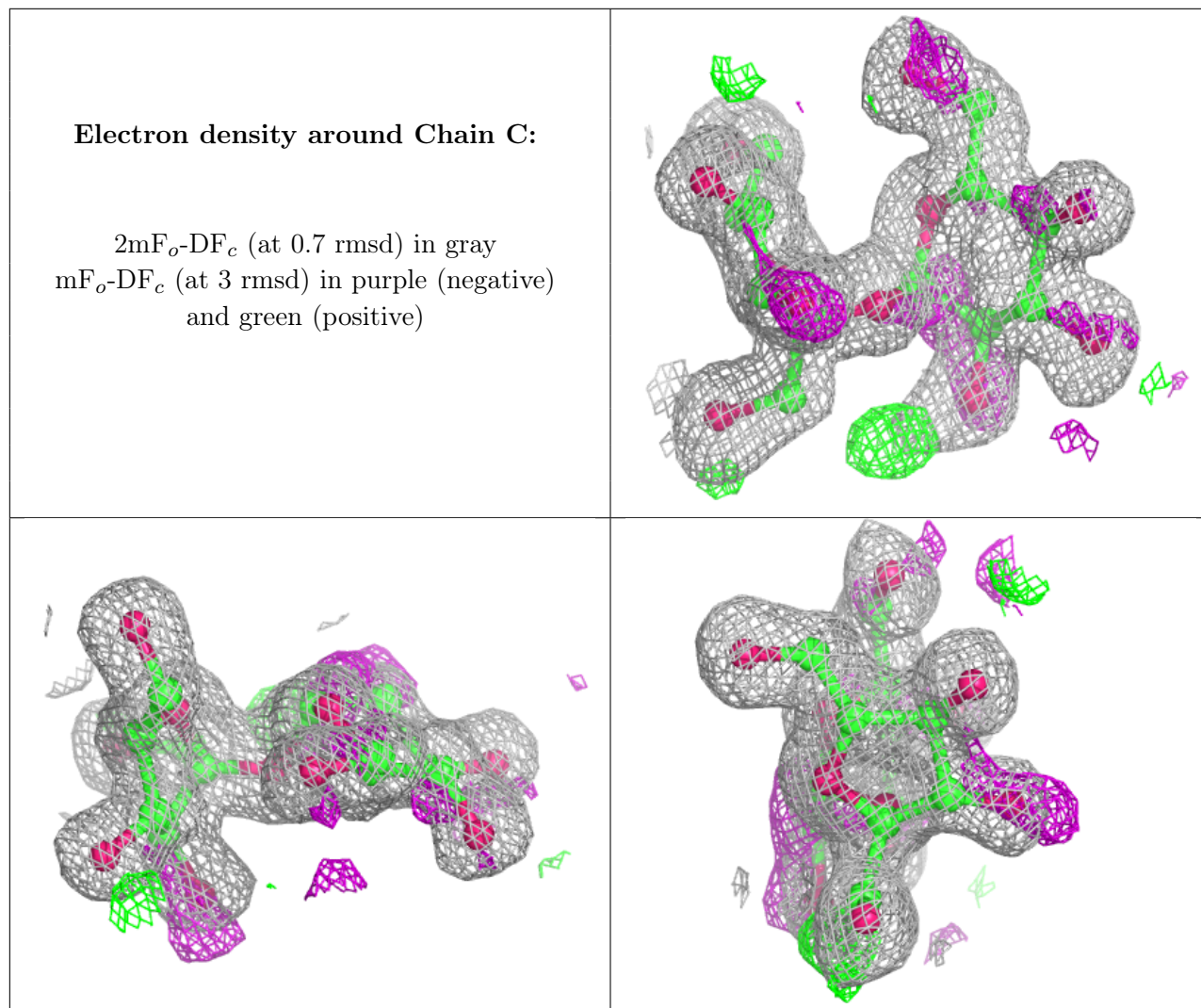
There are no non-standard protein/DNA/RNA residues in this entry.

## 6.3 Carbohydrates [i](#)

In the following table, the Atoms column lists the number of modelled atoms in the group and the number defined in the chemical component dictionary. The B-factors column lists the minimum, median, 95<sup>th</sup> percentile and maximum values of B factors of atoms in the group. The column labelled 'Q<0.9' lists the number of atoms with occupancy less than 0.9.

Mol	Type	Chain	Res	Atoms	RSCC	RSR	B-factors(Å <sup>2</sup> )	Q<0.9
4	GLC	C	1	11/12	0.90	0.17	20,20,21,21	0
4	FRU	C	2	12/12	0.92	0.13	17,19,20,20	0

The following is a graphical depiction of the model fit to experimental electron density for oligosaccharide. Each fit is shown from different orientation to approximate a three-dimensional view.



## 6.4 Ligands [i](#)

In the following table, the Atoms column lists the number of modelled atoms in the group and the number defined in the chemical component dictionary. The B-factors column lists the minimum, median, 95<sup>th</sup> percentile and maximum values of B factors of atoms in the group. The column labelled 'Q< 0.9' lists the number of atoms with occupancy less than 0.9.

Mol	Type	Chain	Res	Atoms	RSCC	RSR	B-factors(Å <sup>2</sup> )	Q<0.9
5	ACY	B	3005	4/4	0.65	0.25	37,37,38,38	0
5	ACY	B	3003	4/4	0.71	0.23	40,41,41,41	0
5	ACY	A	3001	4/4	0.71	0.24	40,41,41,41	0
5	ACY	A	3002	4/4	0.82	0.24	40,41,41,41	0
7	FAR	P	2010	15/15	0.88	0.22	16,19,24,24	0
5	ACY	A	3004	4/4	0.97	0.09	15,15,15,15	0
6	ZN	B	1001	1/1	1.00	0.04	13,13,13,13	0

## 6.5 Other polymers [i](#)

There are no such residues in this entry.