



wwPDB X-ray Structure Validation Summary Report ⓘ

Feb 18, 2024 – 06:22 PM EST

PDB ID : 4H6A
Title : Crystal Structure of the Allene Oxide Cyclase 2 from *Physcomitrella patens*
Authors : Neumann, P.; Ficner, R.
Deposited on : 2012-09-19
Resolution : 1.95 Å(reported)

This is a wwPDB X-ray Structure Validation Summary Report for a publicly released PDB entry.

We welcome your comments at validation@mail.wwpdb.org

A user guide is available at

<https://www.wwpdb.org/validation/2017/XrayValidationReportHelp>

with specific help available everywhere you see the ⓘ symbol.

The types of validation reports are described at

<http://www.wwpdb.org/validation/2017/FAQs#types>.

The following versions of software and data (see [references ⓘ](#)) were used in the production of this report:

MolProbity : 4.02b-467
Mogul : 1.8.5 (274361), CSD as541be (2020)
Xtriage (Phenix) : 1.13
EDS : 2.36
Percentile statistics : 20191225.v01 (using entries in the PDB archive December 25th 2019)
Refmac : 5.8.0158
CCP4 : 7.0.044 (Gargrove)
Ideal geometry (proteins) : Engh & Huber (2001)
Ideal geometry (DNA, RNA) : Parkinson et al. (1996)
Validation Pipeline (wwPDB-VP) : 2.36

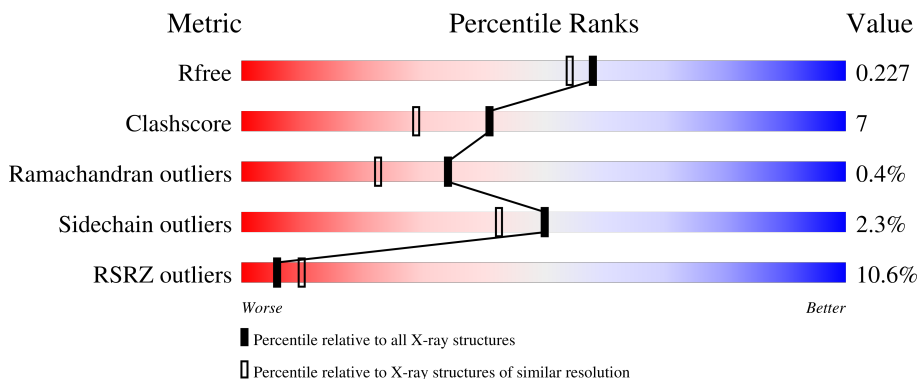
1 Overall quality at a glance

The following experimental techniques were used to determine the structure:

X-RAY DIFFRACTION

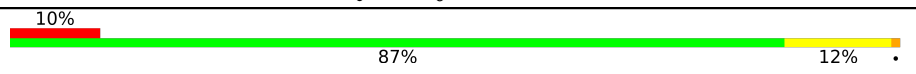
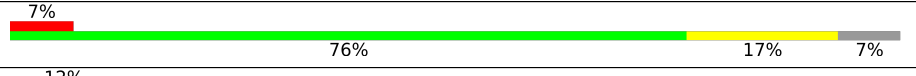

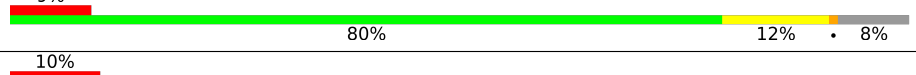
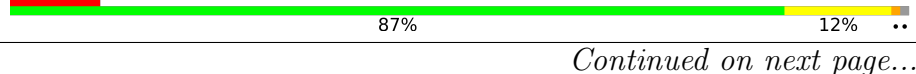
The reported resolution of this entry is 1.95 Å.

Percentile scores (ranging between 0-100) for global validation metrics of the entry are shown in the following graphic. The table shows the number of entries on which the scores are based.



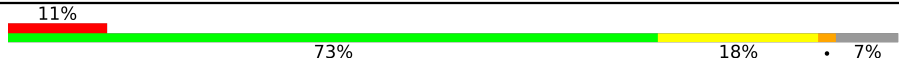
Metric	Whole archive (#Entries)	Similar resolution (#Entries, resolution range(Å))
R_{free}	130704	2580 (1.96-1.96)
Clashscore	141614	2705 (1.96-1.96)
Ramachandran outliers	138981	2678 (1.96-1.96)
Sidechain outliers	138945	2678 (1.96-1.96)
RSRZ outliers	127900	2539 (1.96-1.96)

The table below summarises the geometric issues observed across the polymeric chains and their fit to the electron density. The red, orange, yellow and green segments of the lower bar indicate the fraction of residues that contain outliers for ≥ 3 , 2, 1 and 0 types of geometric quality criteria respectively. A grey segment represents the fraction of residues that are not modelled. The numeric value for each fraction is indicated below the corresponding segment, with a dot representing fractions $\leq 5\%$. The upper red bar (where present) indicates the fraction of residues that have poor fit to the electron density. The numeric value is given above the bar.

Mol	Chain	Length	Quality of chain
1	A	194	
1	B	194	
1	C	194	
1	D	194	
1	E	194	

Continued on next page...

Continued from previous page...

Mol	Chain	Length	Quality of chain
1	F	194	 <p>11% 73% 18% • 7%</p>

2 Entry composition [i](#)

There are 6 unique types of molecules in this entry. The entry contains 9169 atoms, of which 0 are hydrogens and 0 are deuteriums.

In the tables below, the ZeroOcc column contains the number of atoms modelled with zero occupancy, the AltConf column contains the number of residues with at least one atom in alternate conformation and the Trace column contains the number of residues modelled with at most 2 atoms.

- Molecule 1 is a protein called Allene oxide cyclase.

Mol	Chain	Residues	Atoms					ZeroOcc	AltConf	Trace
			Total	C	N	O	S			
1	A	194	1478	941	249	283	5	0	0	0
1	B	180	1374	875	230	264	5	0	0	0
1	C	181	1382	881	231	265	5	0	0	0
1	D	179	1369	874	228	262	5	0	0	0
1	E	193	1474	939	248	282	5	0	0	0
1	F	180	1380	883	229	263	5	0	0	0

There are 36 discrepancies between the modelled and reference sequences:

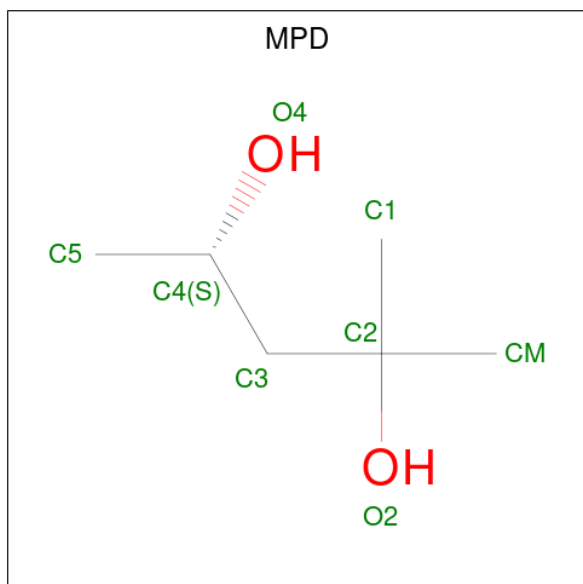
Chain	Residue	Modelled	Actual	Comment	Reference
A	-5	GLY	-	expression tag	UNP A9RB27
A	-4	GLY	-	expression tag	UNP A9RB27
A	-3	PRO	-	expression tag	UNP A9RB27
A	-2	LEU	-	expression tag	UNP A9RB27
A	-1	GLY	-	expression tag	UNP A9RB27
A	0	SER	-	expression tag	UNP A9RB27
B	-5	GLY	-	expression tag	UNP A9RB27
B	-4	GLY	-	expression tag	UNP A9RB27
B	-3	PRO	-	expression tag	UNP A9RB27
B	-2	LEU	-	expression tag	UNP A9RB27
B	-1	GLY	-	expression tag	UNP A9RB27
B	0	SER	-	expression tag	UNP A9RB27
C	-5	GLY	-	expression tag	UNP A9RB27
C	-4	GLY	-	expression tag	UNP A9RB27
C	-3	PRO	-	expression tag	UNP A9RB27
C	-2	LEU	-	expression tag	UNP A9RB27
C	-1	GLY	-	expression tag	UNP A9RB27

Continued on next page...

Continued from previous page...

Chain	Residue	Modelled	Actual	Comment	Reference
C	0	SER	-	expression tag	UNP A9RB27
D	-5	GLY	-	expression tag	UNP A9RB27
D	-4	GLY	-	expression tag	UNP A9RB27
D	-3	PRO	-	expression tag	UNP A9RB27
D	-2	LEU	-	expression tag	UNP A9RB27
D	-1	GLY	-	expression tag	UNP A9RB27
D	0	SER	-	expression tag	UNP A9RB27
E	-5	GLY	-	expression tag	UNP A9RB27
E	-4	GLY	-	expression tag	UNP A9RB27
E	-3	PRO	-	expression tag	UNP A9RB27
E	-2	LEU	-	expression tag	UNP A9RB27
E	-1	GLY	-	expression tag	UNP A9RB27
E	0	SER	-	expression tag	UNP A9RB27
F	-5	GLY	-	expression tag	UNP A9RB27
F	-4	GLY	-	expression tag	UNP A9RB27
F	-3	PRO	-	expression tag	UNP A9RB27
F	-2	LEU	-	expression tag	UNP A9RB27
F	-1	GLY	-	expression tag	UNP A9RB27
F	0	SER	-	expression tag	UNP A9RB27

- Molecule 2 is (4S)-2-METHYL-2,4-PENTANEDIOL (three-letter code: MPD) (formula: C₆H₁₄O₂).



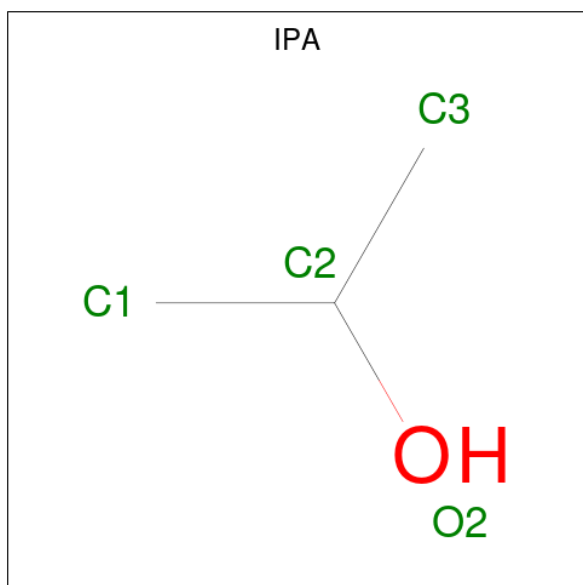
Mol	Chain	Residues	Atoms		ZeroOcc	AltConf
			Total	C O		
2	A	1	16	12 4	0	1

Continued on next page...

Continued from previous page...

Mol	Chain	Residues	Atoms	ZeroOcc	AltConf
2	C	1	Total C O 8 6 2	0	0
2	D	1	Total C O 8 6 2	0	0

- Molecule 3 is ISOPROPYL ALCOHOL (three-letter code: IPA) (formula: C₃H₈O).



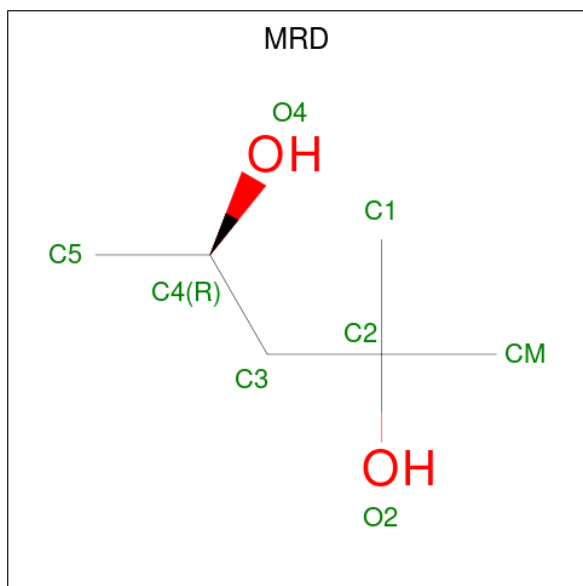
Mol	Chain	Residues	Atoms	ZeroOcc	AltConf
3	A	1	Total C O 4 3 1	0	0
3	B	1	Total C O 4 3 1	0	0
3	B	1	Total C O 4 3 1	0	0
3	E	1	Total C O 8 6 2	0	1
3	E	1	Total C O 4 3 1	0	0
3	E	1	Total C O 4 3 1	0	0
3	F	1	Total C O 4 3 1	0	0

- Molecule 4 is SULFATE ION (three-letter code: SO4) (formula: O₄S).



Mol	Chain	Residues	Atoms			ZeroOcc	AltConf
4	D	1	Total	O	S	0	0
			5	4	1		

- Molecule 5 is (4R)-2-METHYLPENTANE-2,4-DIOL (three-letter code: MRD) (formula: $C_6H_{14}O_2$).



Mol	Chain	Residues	Atoms			ZeroOcc	AltConf
5	F	1	Total	C	O	0	0
			8	6	2		

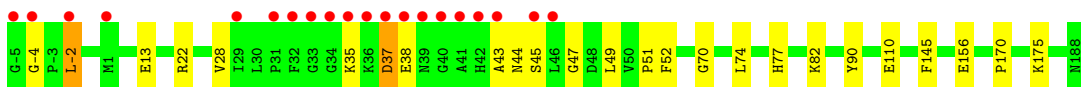
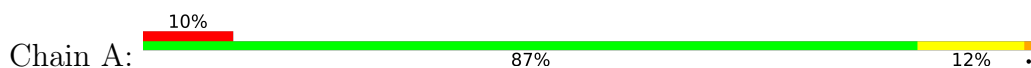
- Molecule 6 is water.

Mol	Chain	Residues	Atoms		ZeroOcc	AltConf
6	A	136	Total 136	O 136	0	0
6	B	121	Total 121	O 121	0	0
6	C	101	Total 101	O 101	0	0
6	D	100	Total 100	O 100	0	0
6	E	116	Total 116	O 116	0	0
6	F	61	Total 61	O 61	0	0

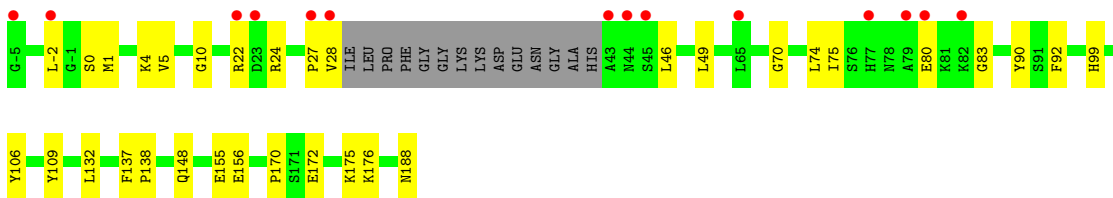
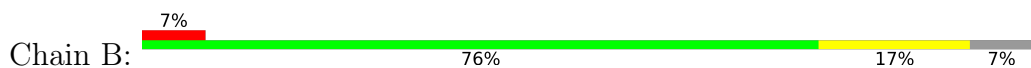
3 Residue-property plots [i](#)

These plots are drawn for all protein, RNA, DNA and oligosaccharide chains in the entry. The first graphic for a chain summarises the proportions of the various outlier classes displayed in the second graphic. The second graphic shows the sequence view annotated by issues in geometry and electron density. Residues are color-coded according to the number of geometric quality criteria for which they contain at least one outlier: green = 0, yellow = 1, orange = 2 and red = 3 or more. A red dot above a residue indicates a poor fit to the electron density ($RSRZ > 2$). Stretches of 2 or more consecutive residues without any outlier are shown as a green connector. Residues present in the sample, but not in the model, are shown in grey.

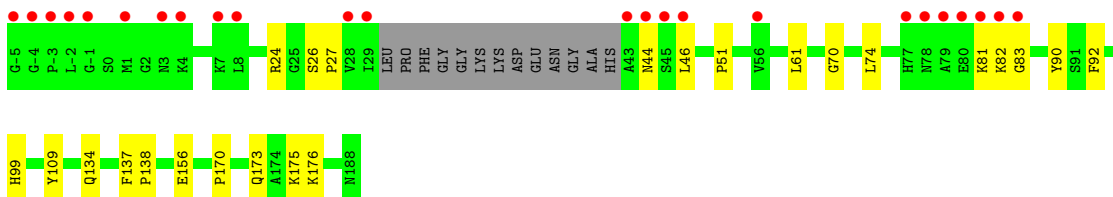
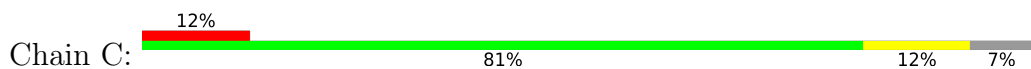
- Molecule 1: Allene oxide cyclase



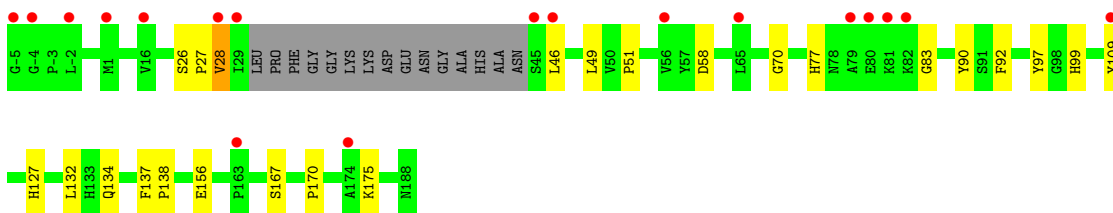
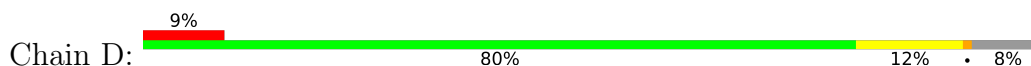
- Molecule 1: Allene oxide cyclase



- Molecule 1: Allene oxide cyclase



- Molecule 1: Allene oxide cyclase



4 Data and refinement statistics i

Property	Value	Source
Space group	P 1 21 1	Depositor
Cell constants a, b, c, α , β , γ	67.59Å 115.40Å 87.03Å 90.00° 91.58° 90.00°	Depositor
Resolution (Å)	19.45 – 1.95 19.73 – 1.95	Depositor EDS
% Data completeness (in resolution range)	99.8 (19.45-1.95) 99.8 (19.73-1.95)	Depositor EDS
R_{merge}	0.05	Depositor
R_{sym}	(Not available)	Depositor
$\langle I/\sigma(I) \rangle$ ¹	1.95 (at 1.94Å)	Xtrriage
Refinement program	PHENIX 1.7.1_743	Depositor
R, R_{free}	0.200 , 0.231 0.195 , 0.227	Depositor DCC
R_{free} test set	4840 reflections (5.00%)	wwPDB-VP
Wilson B-factor (Å ²)	29.1	Xtrriage
Anisotropy	0.433	Xtrriage
Bulk solvent k_{sol} (e/Å ³), B_{sol} (Å ²)	0.35 , 59.2	EDS
L-test for twinning ²	$\langle L \rangle = 0.49$, $\langle L^2 \rangle = 0.33$	Xtrriage
Estimated twinning fraction	0.027 for h,-k,-l	Xtrriage
F_o, F_c correlation	0.96	EDS
Total number of atoms	9169	wwPDB-VP
Average B, all atoms (Å ²)	39.0	wwPDB-VP

Xtrriage's analysis on translational NCS is as follows: *The largest off-origin peak in the Patterson function is 4.46% of the height of the origin peak. No significant pseudotranslation is detected.*

¹Intensities estimated from amplitudes.

²Theoretical values of $\langle |L| \rangle$, $\langle L^2 \rangle$ for acentric reflections are 0.5, 0.333 respectively for untwinned datasets, and 0.375, 0.2 for perfectly twinned datasets.

5 Model quality [i](#)

5.1 Standard geometry [i](#)

Bond lengths and bond angles in the following residue types are not validated in this section: IPA, SO4, MRD, MPD

The Z score for a bond length (or angle) is the number of standard deviations the observed value is removed from the expected value. A bond length (or angle) with $|Z| > 5$ is considered an outlier worth inspection. RMSZ is the root-mean-square of all Z scores of the bond lengths (or angles).

Mol	Chain	Bond lengths		Bond angles	
		RMSZ	# Z >5	RMSZ	# Z >5
1	A	0.24	0/1515	0.46	0/2051
1	B	0.24	0/1407	0.45	0/1905
1	C	0.34	0/1415	0.48	0/1916
1	D	0.33	0/1402	0.45	0/1898
1	E	0.24	0/1511	0.43	0/2046
1	F	0.32	0/1414	0.46	0/1916
All	All	0.28	0/8664	0.46	0/11732

There are no bond length outliers.

There are no bond angle outliers.

There are no chirality outliers.

There are no planarity outliers.

5.2 Too-close contacts [i](#)

In the following table, the Non-H and H(model) columns list the number of non-hydrogen atoms and hydrogen atoms in the chain respectively. The H(added) column lists the number of hydrogen atoms added and optimized by MolProbity. The Clashes column lists the number of clashes within the asymmetric unit, whereas Symm-Clashes lists symmetry-related clashes.

Mol	Chain	Non-H	H(model)	H(added)	Clashes	Symm-Clashes
1	A	1478	0	1449	25	0
1	B	1374	0	1347	22	0
1	C	1382	0	1358	17	0
1	D	1369	0	1347	26	0
1	E	1474	0	1446	16	0
1	F	1380	0	1362	26	0
2	A	16	0	28	4	0

Continued on next page...

Continued from previous page...

Mol	Chain	Non-H	H(model)	H(added)	Clashes	Symm-Clashes
2	C	8	0	14	0	0
2	D	8	0	14	0	0
3	A	4	0	8	0	0
3	B	8	0	16	0	0
3	E	16	0	32	0	0
3	F	4	0	8	0	0
4	D	5	0	0	0	0
5	F	8	0	14	3	0
6	A	136	0	0	2	0
6	B	121	0	0	1	0
6	C	101	0	0	3	0
6	D	100	0	0	2	0
6	E	116	0	0	0	0
6	F	61	0	0	2	0
All	All	9169	0	8443	120	0

The all-atom clashscore is defined as the number of clashes found per 1000 atoms (including hydrogen atoms). The all-atom clashscore for this structure is 7.

The worst 5 of 120 close contacts within the same asymmetric unit are listed below, sorted by their clash magnitude.

Atom-1	Atom-2	Interatomic distance (Å)	Clash overlap (Å)
1:E:47:GLY:HA2	1:F:51:PRO:HG2	1.59	0.85
1:B:24:ARG:NH1	1:B:188:ASN:O	2.14	0.79
1:F:9:ALA:O	1:F:148:GLN:NE2	2.15	0.78
1:A:47:GLY:HA2	1:D:51:PRO:HG2	1.66	0.77
1:D:83:GLY:HA3	1:D:109:TYR:HD2	1.50	0.75

There are no symmetry-related clashes.

5.3 Torsion angles [i](#)

5.3.1 Protein backbone [i](#)

In the following table, the Percentiles column shows the percent Ramachandran outliers of the chain as a percentile score with respect to all X-ray entries followed by that with respect to entries of similar resolution.

The Analysed column shows the number of residues for which the backbone conformation was analysed, and the total number of residues.

Mol	Chain	Analysed	Favoured	Allowed	Outliers	Percentiles	
1	A	192/194 (99%)	183 (95%)	8 (4%)	1 (0%)	29	17
1	B	176/194 (91%)	172 (98%)	3 (2%)	1 (1%)	25	14
1	C	177/194 (91%)	172 (97%)	5 (3%)	0	100	100
1	D	175/194 (90%)	173 (99%)	2 (1%)	0	100	100
1	E	191/194 (98%)	187 (98%)	4 (2%)	0	100	100
1	F	176/194 (91%)	168 (96%)	6 (3%)	2 (1%)	14	5
All	All	1087/1164 (93%)	1055 (97%)	28 (3%)	4 (0%)	34	22

All (4) Ramachandran outliers are listed below:

Mol	Chain	Res	Type
1	B	27	PRO
1	F	7	LYS
1	F	27	PRO
1	A	-4	GLY

5.3.2 Protein sidechains [i](#)

In the following table, the Percentiles column shows the percent sidechain outliers of the chain as a percentile score with respect to all X-ray entries followed by that with respect to entries of similar resolution.

The Analysed column shows the number of residues for which the sidechain conformation was analysed, and the total number of residues.

Mol	Chain	Analysed	Rotameric	Outliers	Percentiles	
1	A	159/159 (100%)	156 (98%)	3 (2%)	57	50
1	B	149/159 (94%)	145 (97%)	4 (3%)	44	34
1	C	150/159 (94%)	148 (99%)	2 (1%)	69	65
1	D	149/159 (94%)	146 (98%)	3 (2%)	55	48
1	E	159/159 (100%)	156 (98%)	3 (2%)	57	50
1	F	151/159 (95%)	145 (96%)	6 (4%)	31	19
All	All	917/954 (96%)	896 (98%)	21 (2%)	50	42

5 of 21 residues with a non-rotameric sidechain are listed below:

Mol	Chain	Res	Type
1	E	80	GLU

Continued on next page...

Continued from previous page...

Mol	Chain	Res	Type
1	F	29	ILE
1	F	156	GLU
1	F	85	ARG
1	F	22	ARG

Sometimes sidechains can be flipped to improve hydrogen bonding and reduce clashes. All (3) such sidechains are listed below:

Mol	Chain	Res	Type
1	B	44	ASN
1	B	134	GLN
1	D	134	GLN

5.3.3 RNA [i](#)

There are no RNA molecules in this entry.

5.4 Non-standard residues in protein, DNA, RNA chains [i](#)

There are no non-standard protein/DNA/RNA residues in this entry.

5.5 Carbohydrates [i](#)

There are no monosaccharides in this entry.

5.6 Ligand geometry [i](#)

14 ligands are modelled in this entry.

In the following table, the Counts columns list the number of bonds (or angles) for which Mogul statistics could be retrieved, the number of bonds (or angles) that are observed in the model and the number of bonds (or angles) that are defined in the Chemical Component Dictionary. The Link column lists molecule types, if any, to which the group is linked. The Z score for a bond length (or angle) is the number of standard deviations the observed value is removed from the expected value. A bond length (or angle) with $|Z| > 2$ is considered an outlier worth inspection. RMSZ is the root-mean-square of all Z scores of the bond lengths (or angles).

Mol	Type	Chain	Res	Link	Bond lengths			Bond angles		
					Counts	RMSZ	$\# Z > 2$	Counts	RMSZ	$\# Z > 2$
3	IPA	B	202	-	3,3,3	0.58	0	3,3,3	0.32	0
3	IPA	E	201[B]	-	3,3,3	0.61	0	3,3,3	0.32	0

Mol	Type	Chain	Res	Link	Bond lengths			Bond angles		
					Counts	RMSZ	# Z > 2	Counts	RMSZ	# Z > 2
3	IPA	E	201[A]	-	3,3,3	0.59	0	3,3,3	0.31	0
2	MPD	A	201[A]	-	7,7,7	0.28	0	9,10,10	0.21	0
5	MRD	F	201	-	7,7,7	0.27	0	9,10,10	0.33	0
2	MPD	A	201[B]	-	7,7,7	0.27	0	9,10,10	0.30	0
2	MPD	C	201	-	7,7,7	0.26	0	9,10,10	0.30	0
3	IPA	F	202	-	3,3,3	0.58	0	3,3,3	0.33	0
2	MPD	D	202	-	7,7,7	0.28	0	9,10,10	0.39	0
4	SO4	D	201	-	4,4,4	0.14	0	6,6,6	0.04	0
3	IPA	A	202	-	3,3,3	0.61	0	3,3,3	0.32	0
3	IPA	E	202	-	3,3,3	0.58	0	3,3,3	0.33	0
3	IPA	E	203	-	3,3,3	0.60	0	3,3,3	0.33	0
3	IPA	B	201	-	3,3,3	0.60	0	3,3,3	0.33	0

In the following table, the Chirals column lists the number of chiral outliers, the number of chiral centers analysed, the number of these observed in the model and the number defined in the Chemical Component Dictionary. Similar counts are reported in the Torsion and Rings columns. '-' means no outliers of that kind were identified.

Mol	Type	Chain	Res	Link	Chirals	Torsions	Rings
5	MRD	F	201	-	-	1/5/5/5	-
2	MPD	A	201[A]	-	-	1/5/5/5	-
2	MPD	A	201[B]	-	-	4/5/5/5	-
2	MPD	C	201	-	-	2/5/5/5	-
2	MPD	D	202	-	-	0/5/5/5	-

There are no bond length outliers.

There are no bond angle outliers.

There are no chirality outliers.

5 of 8 torsion outliers are listed below:

Mol	Chain	Res	Type	Atoms
2	A	201[B]	MPD	O2-C2-C3-C4
2	A	201[B]	MPD	CM-C2-C3-C4
2	C	201	MPD	CM-C2-C3-C4
2	C	201	MPD	O2-C2-C3-C4
2	A	201[B]	MPD	C2-C3-C4-C5

There are no ring outliers.

3 monomers are involved in 7 short contacts:

Mol	Chain	Res	Type	Clashes	Symm-Clashes
2	A	201[A]	MPD	3	0
5	F	201	MRD	3	0
2	A	201[B]	MPD	1	0

5.7 Other polymers [i](#)

There are no such residues in this entry.

5.8 Polymer linkage issues [i](#)

There are no chain breaks in this entry.

6 Fit of model and data [i](#)

6.1 Protein, DNA and RNA chains [i](#)

In the following table, the column labelled ‘#RSRZ > 2’ contains the number (and percentage) of RSRZ outliers, followed by percent RSRZ outliers for the chain as percentile scores relative to all X-ray entries and entries of similar resolution. The OWAB column contains the minimum, median, 95th percentile and maximum values of the occupancy-weighted average B-factor per residue. The column labelled ‘Q < 0.9’ lists the number of (and percentage) of residues with an average occupancy less than 0.9.

Mol	Chain	Analysed	<RSRZ>	#RSRZ>2	OWAB(Å ²)	Q<0.9
1	A	194/194 (100%)	0.47	20 (10%) 6 10	17, 30, 86, 130	0
1	B	180/194 (92%)	0.24	14 (7%) 13 20	20, 29, 65, 85	0
1	C	181/194 (93%)	0.60	24 (13%) 3 5	21, 32, 66, 99	0
1	D	179/194 (92%)	0.45	18 (10%) 7 11	21, 38, 70, 99	0
1	E	193/194 (99%)	0.43	20 (10%) 6 10	22, 34, 70, 92	0
1	F	180/194 (92%)	0.71	21 (11%) 4 7	24, 45, 69, 97	0
All	All	1107/1164 (95%)	0.48	117 (10%) 6 10	17, 34, 70, 130	0

The worst 5 of 117 RSRZ outliers are listed below:

Mol	Chain	Res	Type	RSRZ
1	C	-5	GLY	13.6
1	C	43	ALA	13.6
1	A	-5	GLY	9.3
1	B	44	ASN	8.3
1	A	39	ASN	7.6

6.2 Non-standard residues in protein, DNA, RNA chains [i](#)

There are no non-standard protein/DNA/RNA residues in this entry.

6.3 Carbohydrates [i](#)

There are no monosaccharides in this entry.

6.4 Ligands [i](#)

In the following table, the Atoms column lists the number of modelled atoms in the group and the number defined in the chemical component dictionary. The B-factors column lists the minimum, median, 95th percentile and maximum values of B factors of atoms in the group. The column labelled 'Q<0.9' lists the number of atoms with occupancy less than 0.9.

Mol	Type	Chain	Res	Atoms	RSCC	RSR	B-factors(Å ²)	Q<0.9
2	MPD	A	201[A]	8/8	0.70	0.39	30,37,41,41	8
2	MPD	A	201[B]	8/8	0.70	0.39	39,41,42,42	8
3	IPA	F	202	4/4	0.76	0.23	52,52,53,55	0
3	IPA	B	201	4/4	0.77	0.20	54,56,56,57	0
3	IPA	E	201[A]	4/4	0.81	0.21	38,39,40,42	4
3	IPA	E	201[B]	4/4	0.81	0.21	39,39,40,40	4
3	IPA	A	202	4/4	0.81	0.19	48,52,52,53	0
3	IPA	B	202	4/4	0.87	0.26	56,57,57,58	0
5	MRD	F	201	8/8	0.88	0.36	58,59,60,62	0
4	SO4	D	201	5/5	0.89	0.14	89,89,90,91	0
2	MPD	C	201	8/8	0.89	0.28	36,46,50,55	0
2	MPD	D	202	8/8	0.90	0.20	53,55,57,58	0
3	IPA	E	202	4/4	0.90	0.23	60,61,61,63	0
3	IPA	E	203	4/4	0.90	0.26	56,57,58,60	0

6.5 Other polymers [i](#)

There are no such residues in this entry.