



wwPDB EM Validation Summary Report

Nov 20, 2022 – 07:00 am GMT


PDB ID : 6H6E
EMDB ID : EMD-0149
Title : PTC3 holotoxin complex from Photorhabdus luminescens in prepore state (TcdA1, TcdB2, TccC3)
Authors : Gatsogiannis, C.; Merino, F.; Roderer, D.; Balchin, D.; Schubert, E.; Kuhlee, A.; Hayer-Hartl, M.; Raunser, S.
Deposited on : 2018-07-27
Resolution : 3.95 Å (reported)
Based on initial models : 4O9X, 1VW1

This is a wwPDB EM Validation Summary Report for a publicly released PDB entry.

We welcome your comments at validation@mail.wwpdb.org

A user guide is available at

<https://www.wwpdb.org/validation/2017/EMValidationReportHelp>

with specific help available everywhere you see the  symbol.

The types of validation reports are described at

<http://www.wwpdb.org/validation/2017/FAQs#types>.

The following versions of software and data (see [references](#) ) were used in the production of this report:

EMDB validation analysis : 0.0.1.dev43
MolProbity : 4.02b-467
Percentile statistics : 20191225.v01 (using entries in the PDB archive December 25th 2019)
MapQ : 1.9.9
Ideal geometry (proteins) : Engh & Huber (2001)
Ideal geometry (DNA, RNA) : Parkinson et al. (1996)
Validation Pipeline (wwPDB-VP) : 2.31.2

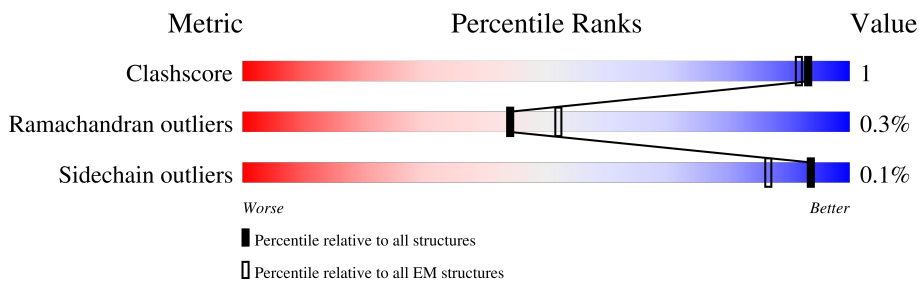
1 Overall quality at a glance i

The following experimental techniques were used to determine the structure:

ELECTRON MICROSCOPY

The reported resolution of this entry is 3.95 Å.

Percentile scores (ranging between 0-100) for global validation metrics of the entry are shown in the following graphic. The table shows the number of entries on which the scores are based.



Metric	Whole archive (#Entries)	EM structures (#Entries)
Clashscore	158937	4297
Ramachandran outliers	154571	4023
Sidechain outliers	154315	3826

The table below summarises the geometric issues observed across the polymeric chains and their fit to the map. The red, orange, yellow and green segments of the bar indicate the fraction of residues that contain outliers for ≥ 3 , 2, 1 and 0 types of geometric quality criteria respectively. A grey segment represents the fraction of residues that are not modelled. The numeric value for each fraction is indicated below the corresponding segment, with a dot representing fractions $\leq 5\%$. The upper red bar (where present) indicates the fraction of residues that have poor fit to the EM map (all-atom inclusion $< 40\%$). The numeric value is given above the bar.

Mol	Chain	Length	Quality of chain
1	A	2516	89% 6% .
1	B	2516	90% 6% .
1	C	2516	90% 6% .
1	D	2516	89% 7% .
1	E	2516	89% 6% .
2	F	2434	81% 7% 12%

2 Entry composition

There are 2 unique types of molecules in this entry. The entry contains 112922 atoms, of which 0 are hydrogens and 0 are deuteriums.

In the tables below, the AltConf column contains the number of residues with at least one atom in alternate conformation and the Trace column contains the number of residues modelled with at most 2 atoms.

- Molecule 1 is a protein called TcdA1.

Mol	Chain	Residues	Atoms					AltConf	Trace
			Total	C	N	O	S		
1	A	2417	19161	12136	3248	3716	61	0	0
1	B	2417	19161	12136	3248	3716	61	0	0
1	C	2417	19161	12136	3248	3716	61	0	0
1	D	2417	19161	12136	3248	3716	61	0	0
1	E	2417	19161	12136	3248	3716	61	0	0

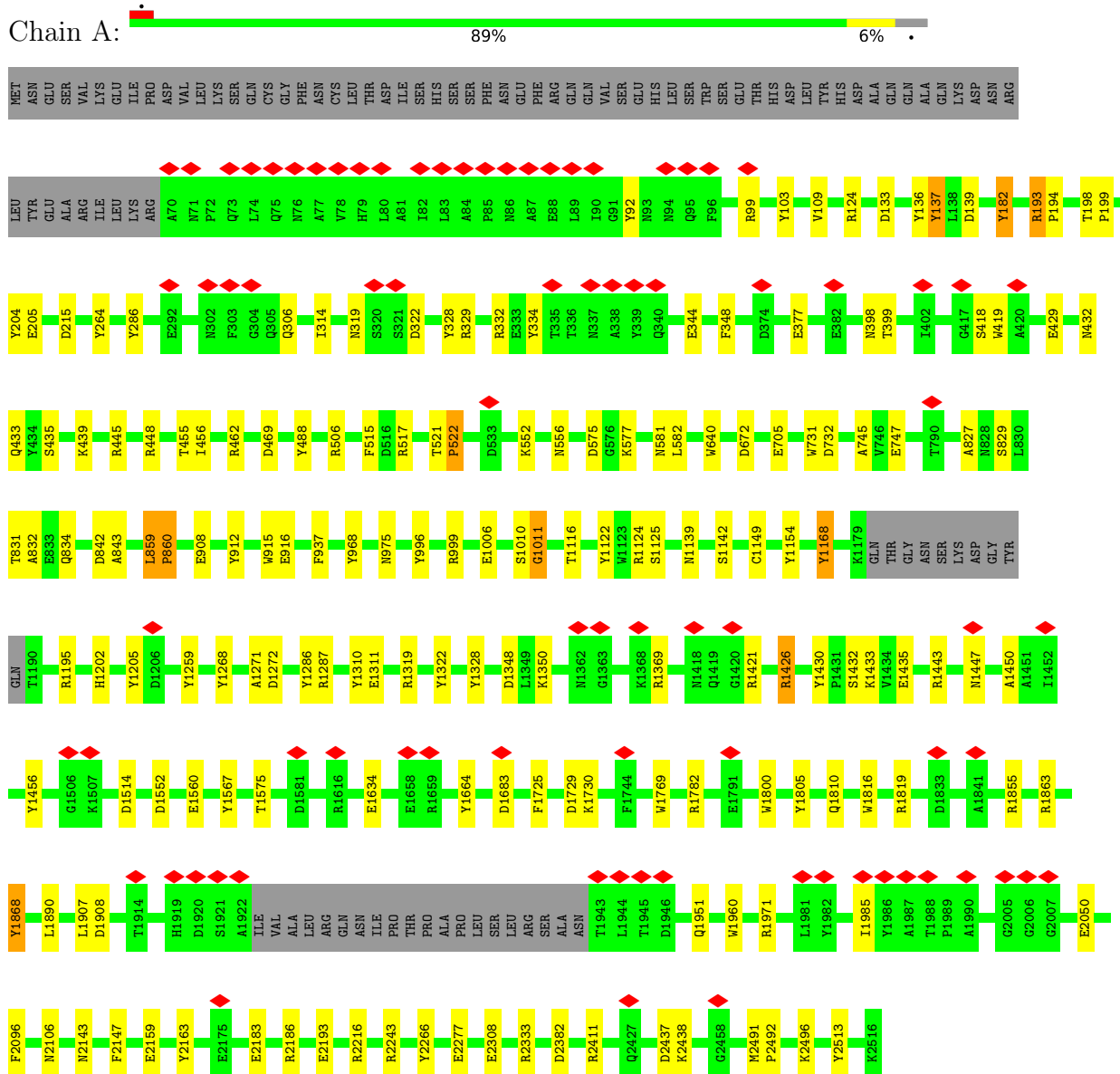
- Molecule 2 is a protein called TcdB2,TccC3.

Mol	Chain	Residues	Atoms					AltConf	Trace
			Total	C	N	O	S		
2	F	2146	17117	10722	3038	3322	35	0	0

3 Residue-property plots [i](#)

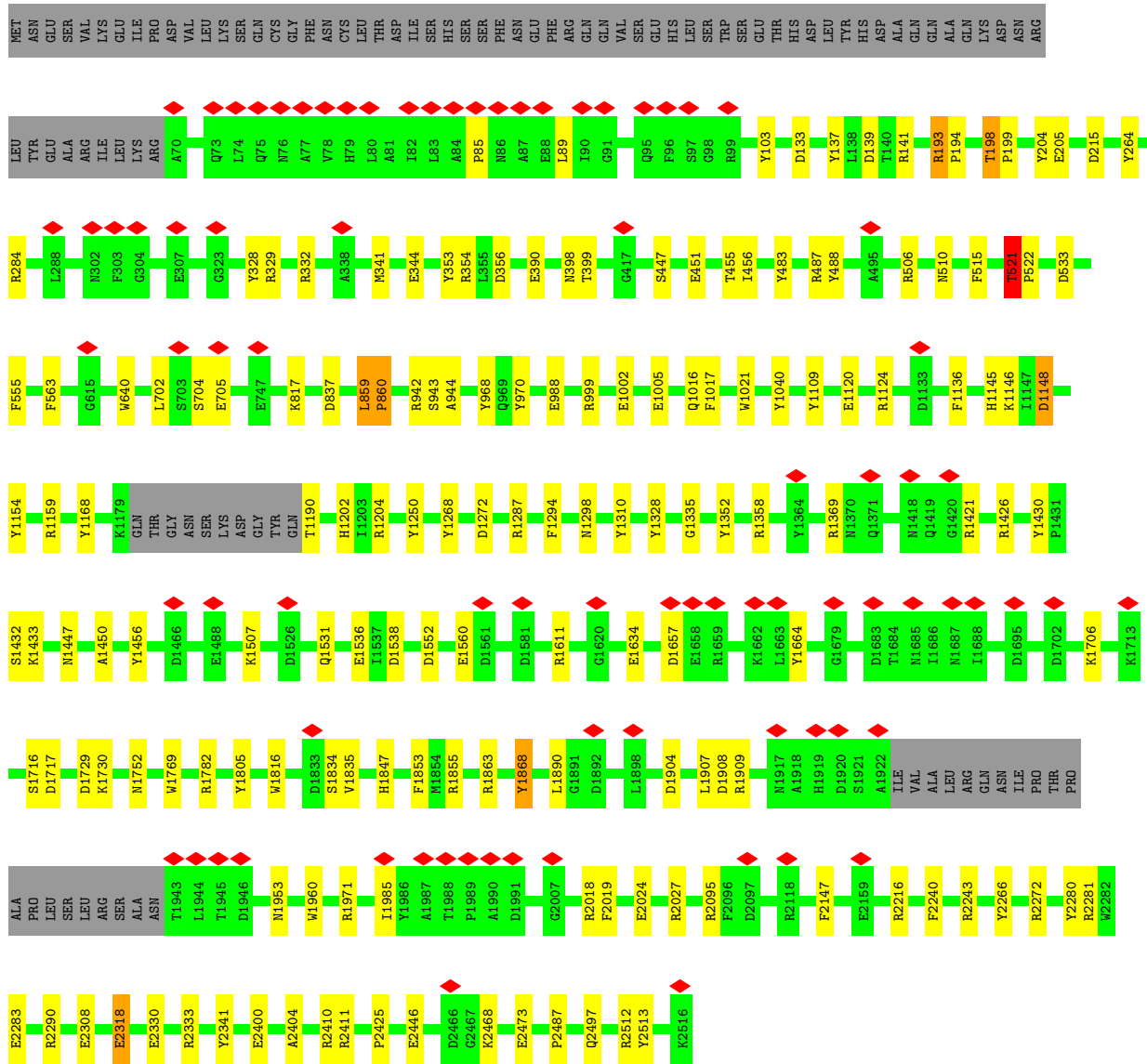
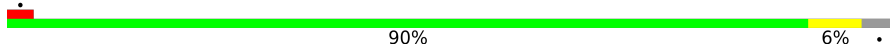
These plots are drawn for all protein, RNA, DNA and oligosaccharide chains in the entry. The first graphic for a chain summarises the proportions of the various outlier classes displayed in the second graphic. The second graphic shows the sequence view annotated by issues in geometry and atom inclusion in map density. Residues are color-coded according to the number of geometric quality criteria for which they contain at least one outlier: green = 0, yellow = 1, orange = 2 and red = 3 or more. A red diamond above a residue indicates a poor fit to the EM map for this residue (all-atom inclusion < 40%). Stretches of 2 or more consecutive residues without any outlier are shown as a green connector. Residues present in the sample, but not in the model, are shown in grey.

- Molecule 1: TcdA1



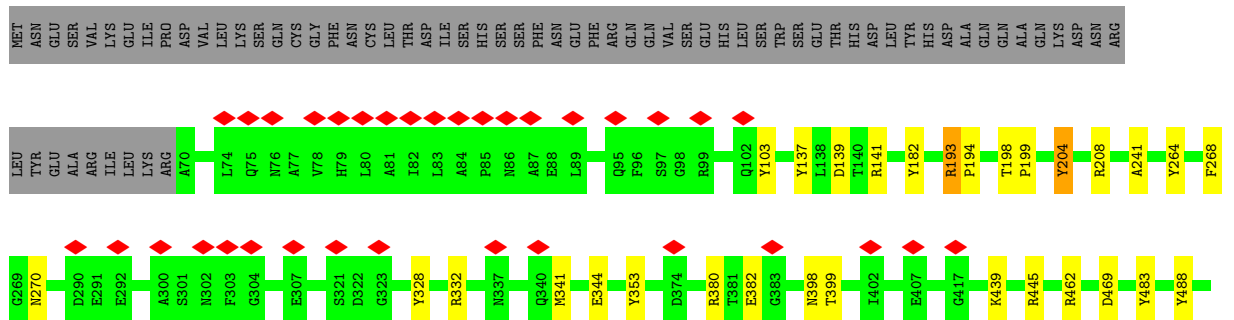
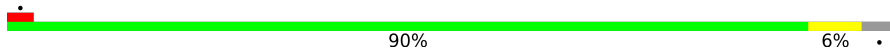
- Molecule 1: TcdA1

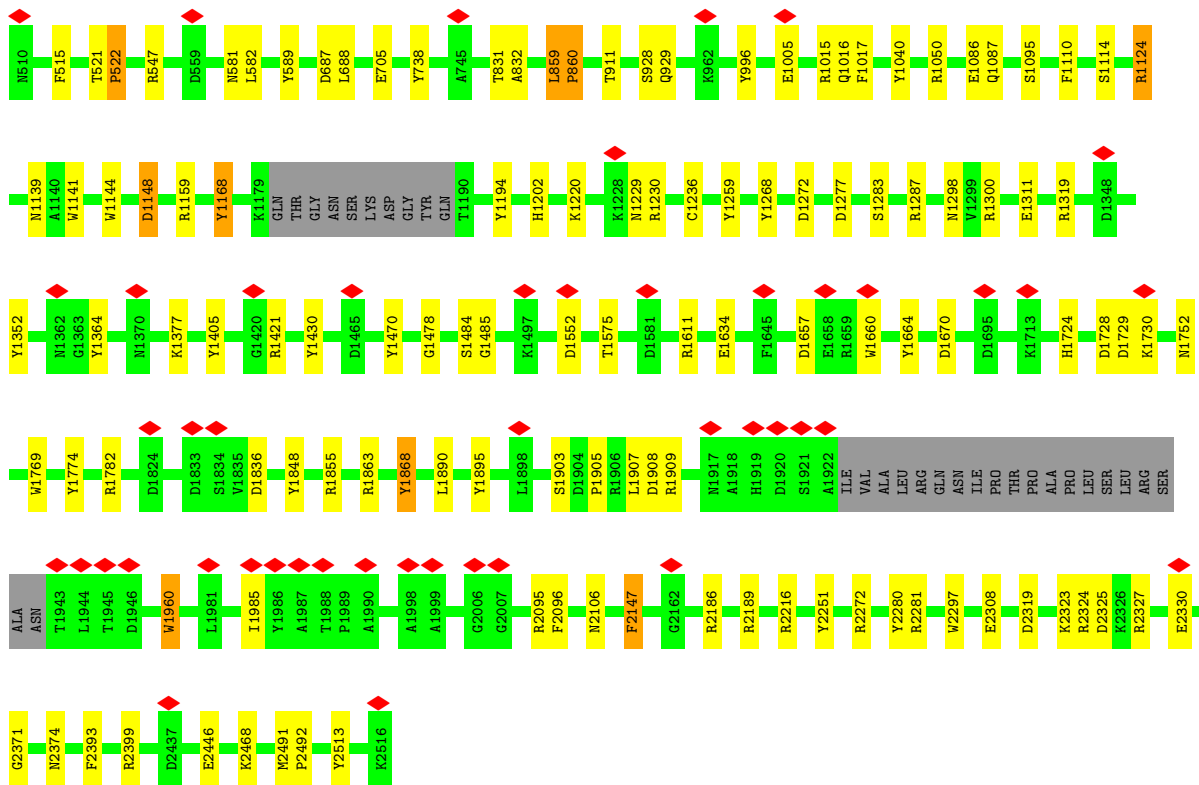
Chain B:



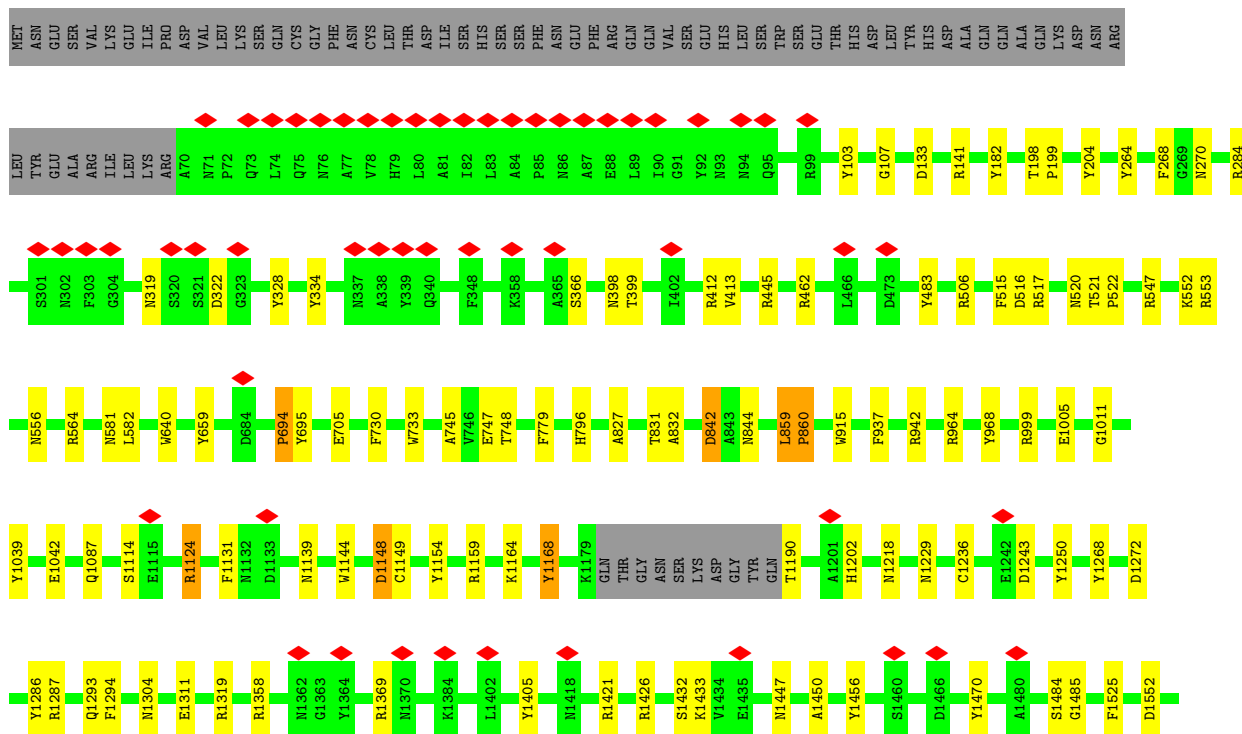
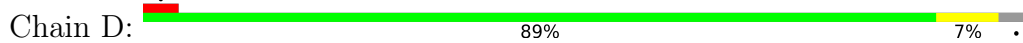
• Molecule 1: TcdA1

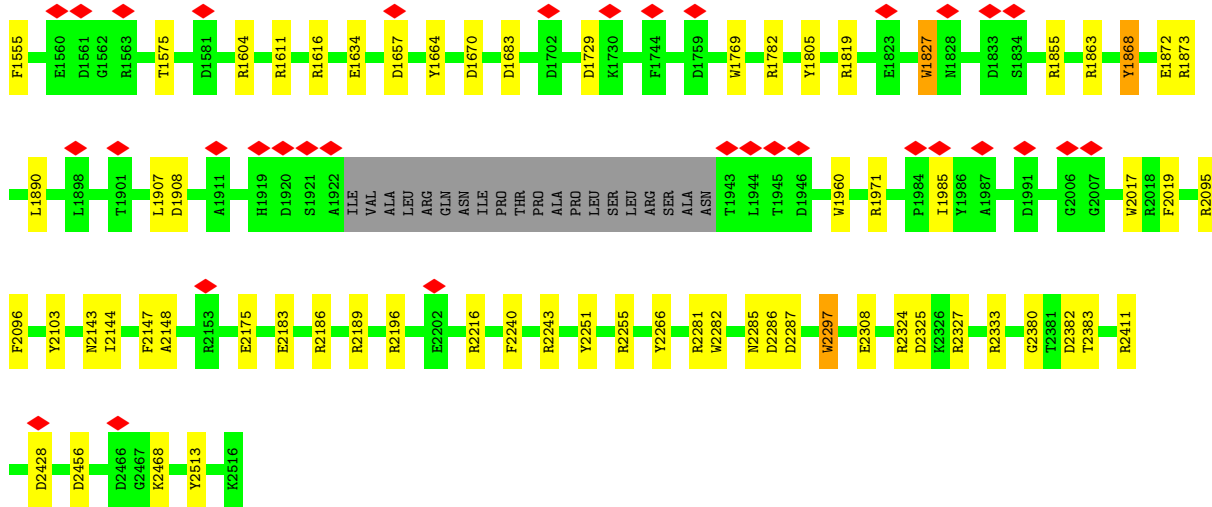
Chain C:



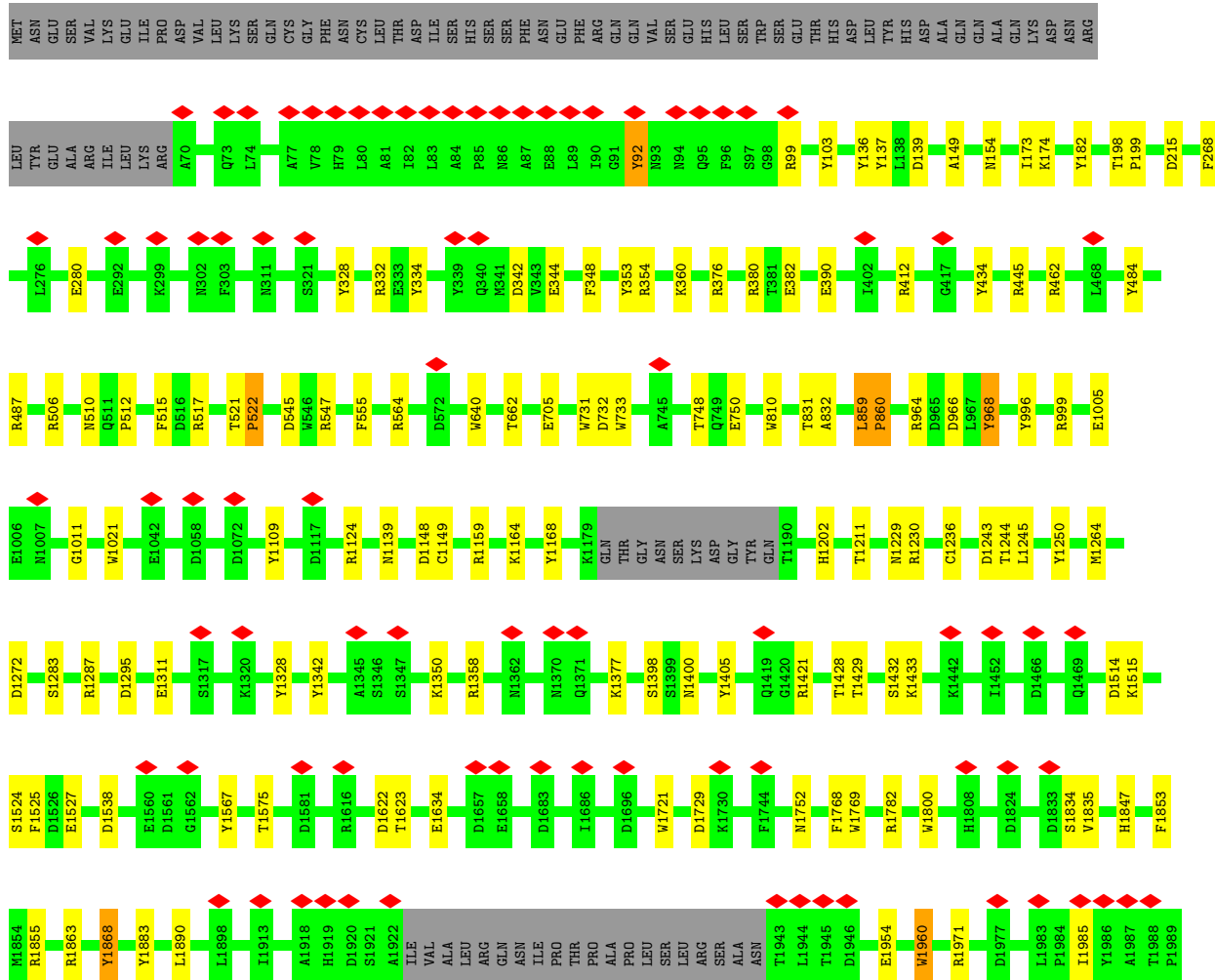
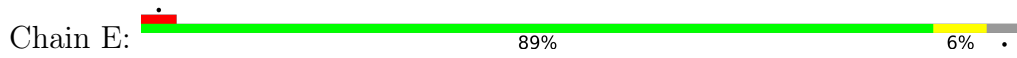


● Molecule 1: TcdA1





• Molecule 1: TcdA1



LYS
TYR
THR
LYS
ASP
LYS
SER
THR
VAL
TRP
VAL
SER
THR
ALA
ILE
ASN
THR
GLU
ALA
GLY
GLY
GLN
SER
ALA
SER
GLY
ALA
PRO
LEU
HIS
LYS
ILE
ASP
MET
ASP
LEU
TYR
GLU
PHE
ALA
ILE
ASP
GLY
GLN
LYS
LEU
ASN
PRO
LEU
PRO
GLU
GLY
ARG
THR
LYS
ASN
MET
VAL
PRO
SER
LEU

LEU
LEU
ASP
THR
PRO
GLN
ILE
GLU
THR
SER
SER
ILE
ILE
ALA
LEU
ASN
HIS
GLY
PRO
VAL
ASN
ASP
ALA
GLU
ILE
SER
PHE
LEU
THR
THR
ILE
PRO
LEU
LYS
ASN
VAL
LYS
PRO
HIS
LYS
ARG

4 Experimental information

Property	Value	Source
EM reconstruction method	SINGLE PARTICLE	Depositor
Imposed symmetry	POINT, C1	Depositor
Number of particles used	89148	Depositor
Resolution determination method	FSC 0.143 CUT-OFF	Depositor
CTF correction method	PHASE FLIPPING AND AMPLITUDE CORRECTION	Depositor
Microscope	FEI TITAN KRIOS	Depositor
Voltage (kV)	300	Depositor
Electron dose ($e^-/\text{\AA}^2$)	2.2	Depositor
Minimum defocus (nm)	Not provided	
Maximum defocus (nm)	Not provided	
Magnification	Not provided	
Image detector	FEI FALCON II (4k x 4k)	Depositor
Maximum map value	0.124	Depositor
Minimum map value	-0.137	Depositor
Average map value	0.000	Depositor
Map value standard deviation	0.003	Depositor
Recommended contour level	0.02	Depositor
Map size (Å)	547.2, 547.2, 547.2	wwPDB
Map dimensions	480, 480, 480	wwPDB
Map angles (°)	90.0, 90.0, 90.0	wwPDB
Pixel spacing (Å)	1.14, 1.14, 1.14	Depositor

5 Model quality [i](#)

5.1 Standard geometry [i](#)

The Z score for a bond length (or angle) is the number of standard deviations the observed value is removed from the expected value. A bond length (or angle) with $|Z| > 5$ is considered an outlier worth inspection. RMSZ is the root-mean-square of all Z scores of the bond lengths (or angles).

Mol	Chain	Bond lengths		Bond angles	
		RMSZ	# Z >5	RMSZ	# Z >5
1	A	1.14	53/19574 (0.3%)	0.95	49/26589 (0.2%)
1	B	1.13	47/19574 (0.2%)	0.94	56/26589 (0.2%)
1	C	1.13	43/19574 (0.2%)	0.95	58/26589 (0.2%)
1	D	1.12	44/19574 (0.2%)	0.96	73/26589 (0.3%)
1	E	1.12	40/19574 (0.2%)	0.96	63/26589 (0.2%)
2	F	1.13	34/17538 (0.2%)	1.02	74/23909 (0.3%)
All	All	1.13	261/115408 (0.2%)	0.96	373/156854 (0.2%)

The worst 5 of 261 bond length outliers are listed below:

Mol	Chain	Res	Type	Atoms	Z	Observed(Å)	Ideal(Å)
1	B	968	TYR	CG-CD1	-9.63	1.26	1.39
1	D	968	TYR	CG-CD1	-9.11	1.27	1.39
1	A	103	TYR	CB-CG	-8.09	1.39	1.51
1	C	103	TYR	CB-CG	-7.53	1.40	1.51
1	A	1769	TRP	CB-CG	-7.52	1.36	1.50

The worst 5 of 373 bond angle outliers are listed below:

Mol	Chain	Res	Type	Atoms	Z	Observed(°)	Ideal(°)
1	A	445	ARG	NE-CZ-NH2	-13.57	113.52	120.30
1	A	462	ARG	NE-CZ-NH2	-13.26	113.67	120.30
1	E	445	ARG	NE-CZ-NH1	11.68	126.14	120.30
1	C	1319	ARG	NE-CZ-NH2	-10.73	114.93	120.30
1	A	1319	ARG	NE-CZ-NH2	-10.70	114.95	120.30

There are no chirality outliers.

There are no planarity outliers.

5.2 Too-close contacts [i](#)

In the following table, the Non-H and H(model) columns list the number of non-hydrogen atoms and hydrogen atoms in the chain respectively. The H(added) column lists the number of hydrogen atoms added and optimized by MolProbity. The Clashes column lists the number of clashes within the asymmetric unit, whereas Symm-Clashes lists symmetry-related clashes.

Mol	Chain	Non-H	H(model)	H(added)	Clashes	Symm-Clashes
1	A	19161	0	18735	50	0
1	B	19161	0	18735	52	0
1	C	19161	0	18735	44	0
1	D	19161	0	18735	64	0
1	E	19161	0	18735	63	0
2	F	17117	0	16479	53	0
All	All	112922	0	110154	294	0

The all-atom clashscore is defined as the number of clashes found per 1000 atoms (including hydrogen atoms). The all-atom clashscore for this structure is 1.

The worst 5 of 294 close contacts within the same asymmetric unit are listed below, sorted by their clash magnitude.

Atom-1	Atom-2	Interatomic distance (Å)	Clash overlap (Å)
1:D:2147:PHE:CD1	1:E:2147:PHE:CE1	1.83	1.63
1:D:2147:PHE:CD1	1:E:2147:PHE:HE1	0.95	1.59
1:D:2147:PHE:HD1	1:E:2147:PHE:CE1	1.29	1.24
1:D:2144:ILE:HG22	1:D:2148:ALA:O	1.65	0.95
1:D:2147:PHE:HB3	1:E:2147:PHE:HD1	1.33	0.93

There are no symmetry-related clashes.

5.3 Torsion angles [i](#)

5.3.1 Protein backbone [i](#)

In the following table, the Percentiles column shows the percent Ramachandran outliers of the chain as a percentile score with respect to all PDB entries followed by that with respect to all EM entries.

The Analysed column shows the number of residues for which the backbone conformation was analysed, and the total number of residues.

Mol	Chain	Analysed	Favoured	Allowed	Outliers	Percentiles
1	A	2411/2516 (96%)	2371 (98%)	34 (1%)	6 (0%)	47 79

Continued on next page...

Continued from previous page...

Mol	Chain	Analysed	Favoured	Allowed	Outliers	Percentiles	
1	B	2411/2516 (96%)	2365 (98%)	41 (2%)	5 (0%)	47	79
1	C	2411/2516 (96%)	2359 (98%)	44 (2%)	8 (0%)	41	74
1	D	2411/2516 (96%)	2361 (98%)	45 (2%)	5 (0%)	47	79
1	E	2411/2516 (96%)	2360 (98%)	47 (2%)	4 (0%)	47	79
2	F	2142/2434 (88%)	2077 (97%)	56 (3%)	9 (0%)	34	70
All	All	14197/15014 (95%)	13893 (98%)	267 (2%)	37 (0%)	44	74

5 of 37 Ramachandran outliers are listed below:

Mol	Chain	Res	Type
1	A	860	PRO
1	B	860	PRO
1	C	688	LEU
1	C	860	PRO
1	C	911	THR

5.3.2 Protein sidechains [i](#)

In the following table, the Percentiles column shows the percent sidechain outliers of the chain as a percentile score with respect to all PDB entries followed by that with respect to all EM entries.

The Analysed column shows the number of residues for which the sidechain conformation was analysed, and the total number of residues.

Mol	Chain	Analysed	Rotameric	Outliers	Percentiles	
1	A	2067/2157 (96%)	2065 (100%)	2 (0%)	93	96
1	B	2067/2157 (96%)	2065 (100%)	2 (0%)	93	96
1	C	2067/2157 (96%)	2065 (100%)	2 (0%)	93	96
1	D	2067/2157 (96%)	2066 (100%)	1 (0%)	100	100
1	E	2067/2157 (96%)	2065 (100%)	2 (0%)	93	96
2	F	1853/2105 (88%)	1849 (100%)	4 (0%)	93	96
All	All	12188/12890 (95%)	12175 (100%)	13 (0%)	93	96

5 of 13 residues with a non-rotameric sidechain are listed below:

Mol	Chain	Res	Type
1	E	968	TYR

Continued on next page...

Continued from previous page...

Mol	Chain	Res	Type
1	E	1868	TYR
2	F	1969	ARG
2	F	1044	ARG
2	F	1848	ARG

Sometimes sidechains can be flipped to improve hydrogen bonding and reduce clashes. 5 of 7 such sidechains are listed below:

Mol	Chain	Res	Type
1	D	1087	GLN
1	D	1748	ASN
1	E	1087	GLN
1	D	2143	ASN
1	B	2021	HIS

5.3.3 RNA [i](#)

There are no RNA molecules in this entry.

5.4 Non-standard residues in protein, DNA, RNA chains [i](#)

There are no non-standard protein/DNA/RNA residues in this entry.

5.5 Carbohydrates [i](#)

There are no monosaccharides in this entry.

5.6 Ligand geometry [i](#)

There are no ligands in this entry.

5.7 Other polymers [i](#)

There are no such residues in this entry.

5.8 Polymer linkage issues [i](#)

There are no chain breaks in this entry.

6 Map visualisation [i](#)

This section contains visualisations of the EMDB entry EMD-0149. These allow visual inspection of the internal detail of the map and identification of artifacts.

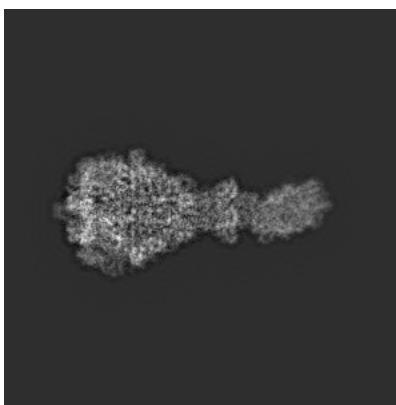
No raw map or half-maps were deposited for this entry and therefore no images, graphs, etc. pertaining to the raw map can be shown.

6.1 Orthogonal projections [i](#)

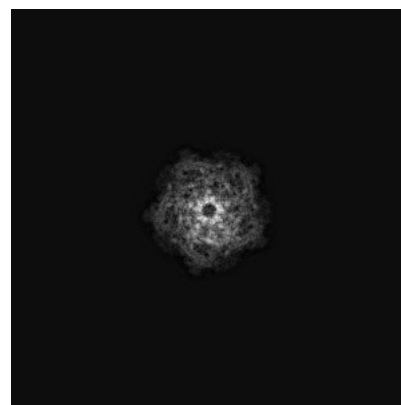
6.1.1 Primary map



X



Y

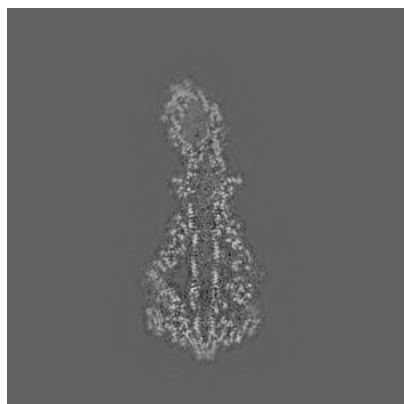


Z

The images above show the map projected in three orthogonal directions.

6.2 Central slices [i](#)

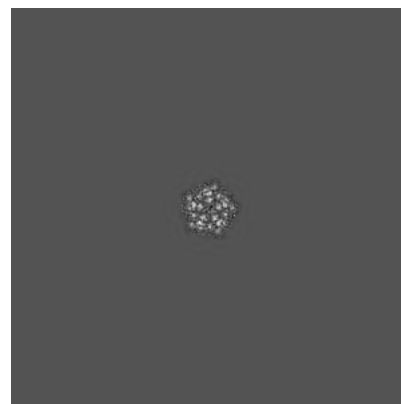
6.2.1 Primary map



X Index: 240



Y Index: 240



Z Index: 240

The images above show central slices of the map in three orthogonal directions.

6.3 Largest variance slices [i](#)

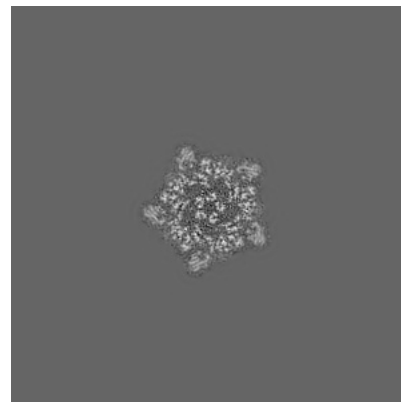
6.3.1 Primary map



X Index: 227



Y Index: 227



Z Index: 139

The images above show the largest variance slices of the map in three orthogonal directions.

6.4 Orthogonal surface views [i](#)

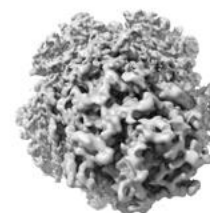
6.4.1 Primary map



X



Y



Z

The images above show the 3D surface view of the map at the recommended contour level 0.02. These images, in conjunction with the slice images, may facilitate assessment of whether an appropriate contour level has been provided.

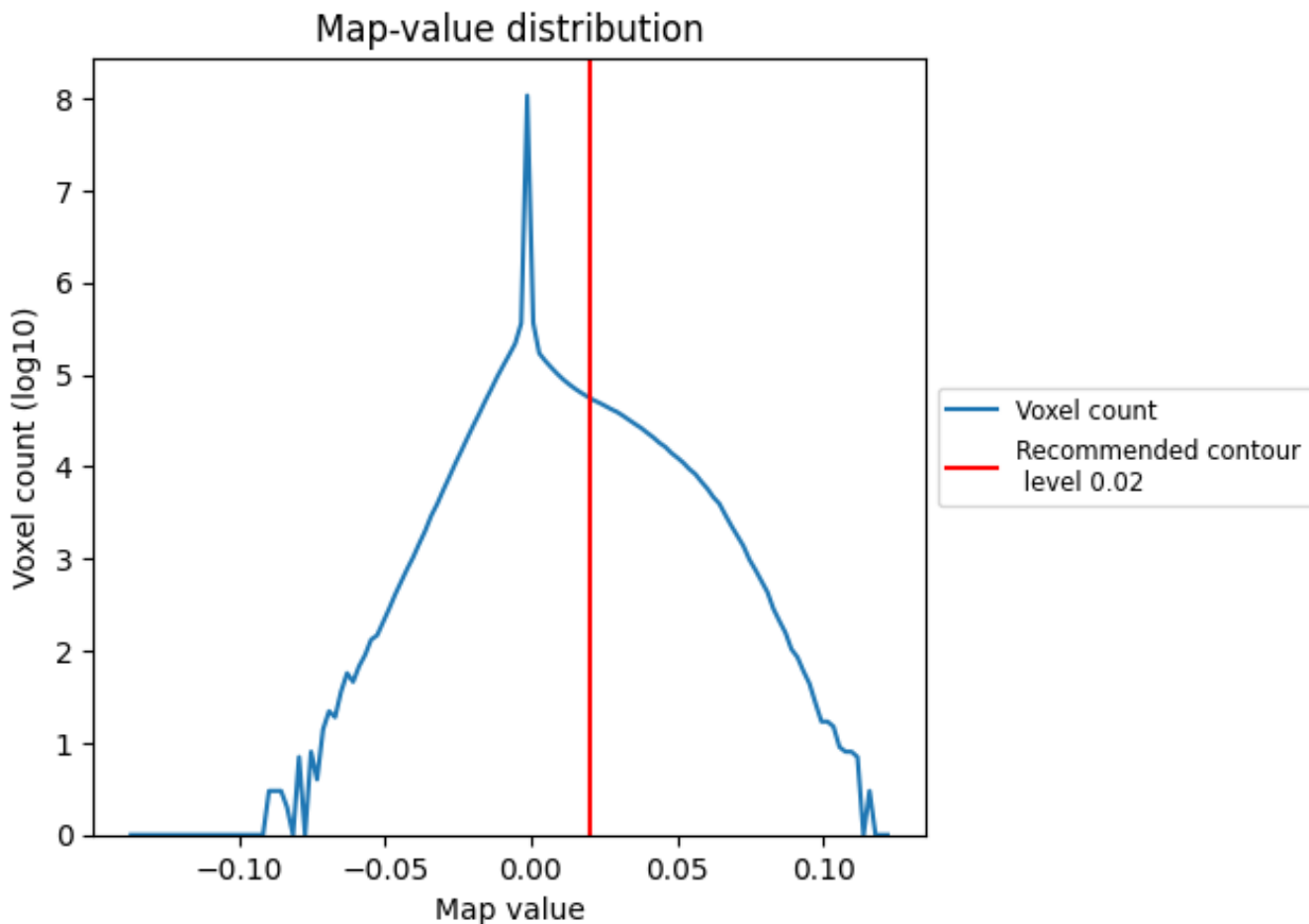
6.5 Mask visualisation

This section was not generated. No masks/segmentation were deposited.

7 Map analysis [i](#)

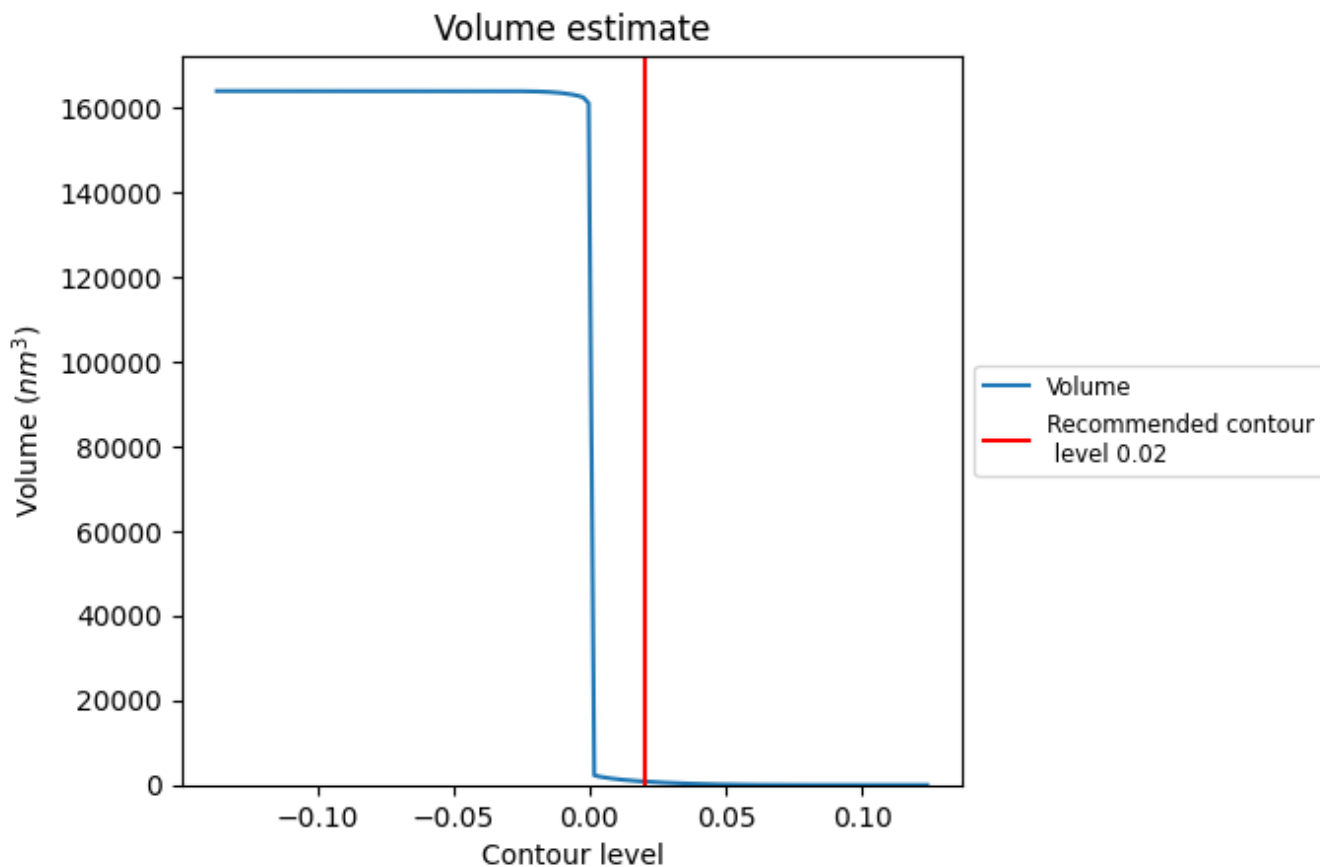
This section contains the results of statistical analysis of the map.

7.1 Map-value distribution [i](#)



The map-value distribution is plotted in 128 intervals along the x-axis. The y-axis is logarithmic. A spike in this graph at zero usually indicates that the volume has been masked.

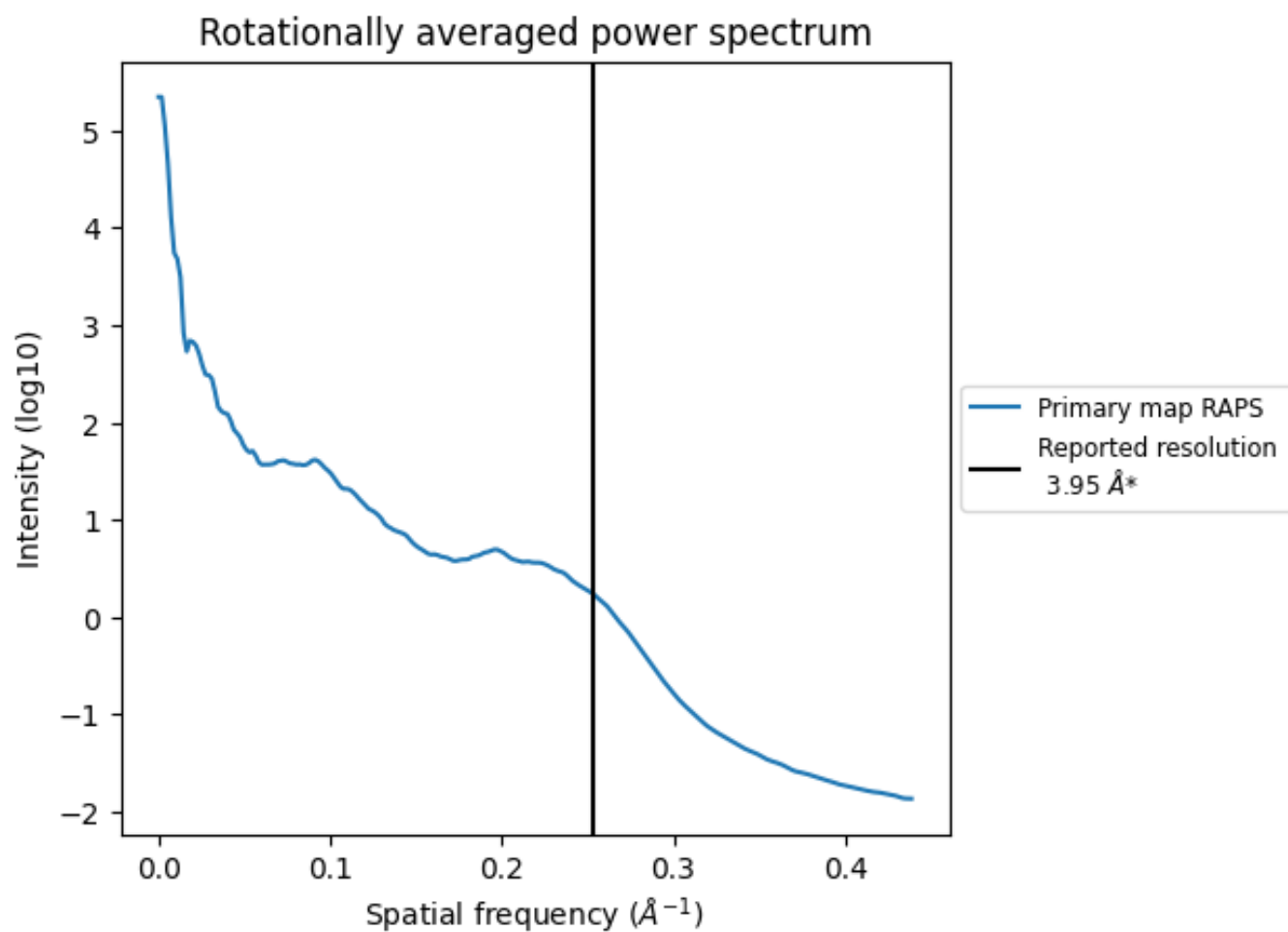
7.2 Volume estimate [\(i\)](#)



The volume at the recommended contour level is 825 nm³; this corresponds to an approximate mass of 745 kDa.

The volume estimate graph shows how the enclosed volume varies with the contour level. The recommended contour level is shown as a vertical line and the intersection between the line and the curve gives the volume of the enclosed surface at the given level.

7.3 Rotationally averaged power spectrum [i](#)



*Reported resolution corresponds to spatial frequency of 0.253 Å⁻¹

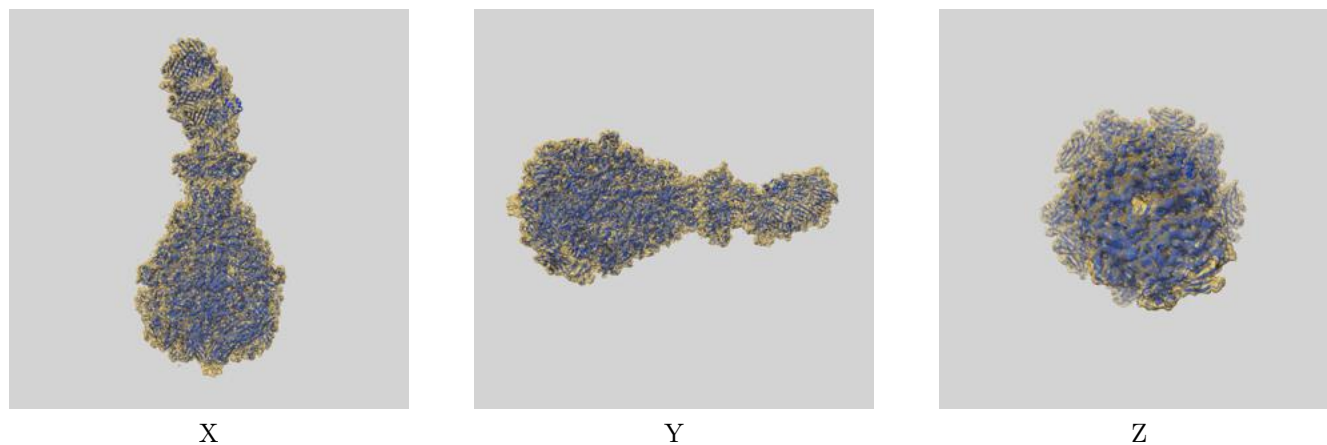
8 Fourier-Shell correlation

This section was not generated. No FSC curve or half-maps provided.

9 Map-model fit [i](#)

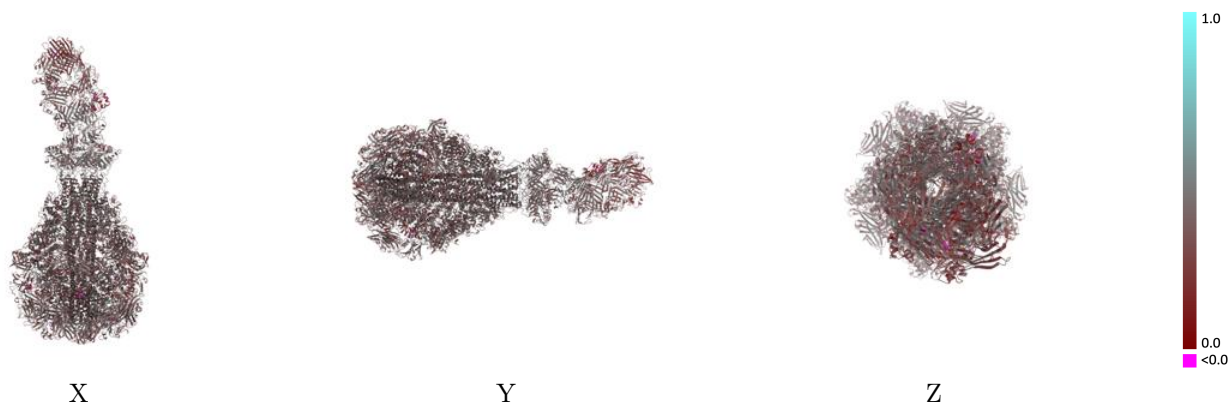
This section contains information regarding the fit between EMDB map EMD-0149 and PDB model 6H6E. Per-residue inclusion information can be found in section [3](#) on page [4](#).

9.1 Map-model overlay [i](#)



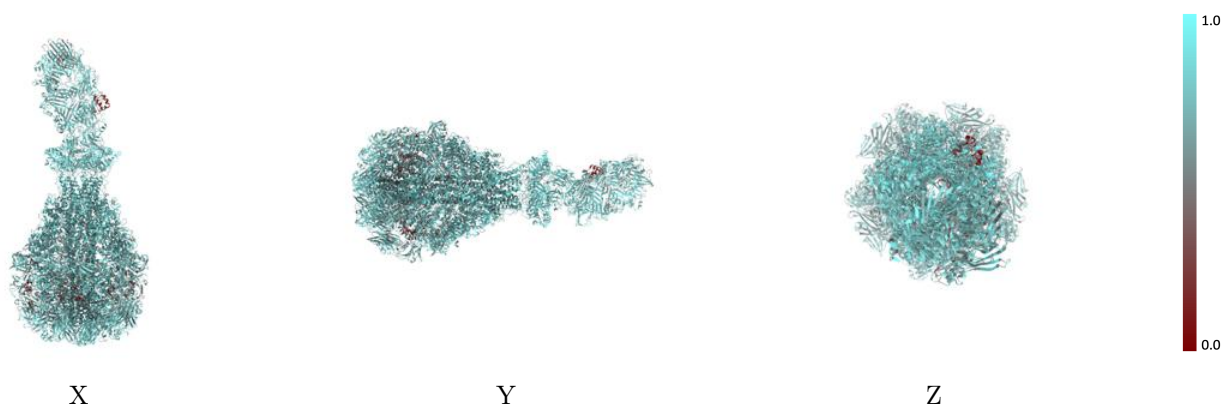
The images above show the 3D surface view of the map at the recommended contour level 0.02 at 50% transparency in yellow overlaid with a ribbon representation of the model coloured in blue. These images allow for the visual assessment of the quality of fit between the atomic model and the map.

9.2 Q-score mapped to coordinate model [i](#)



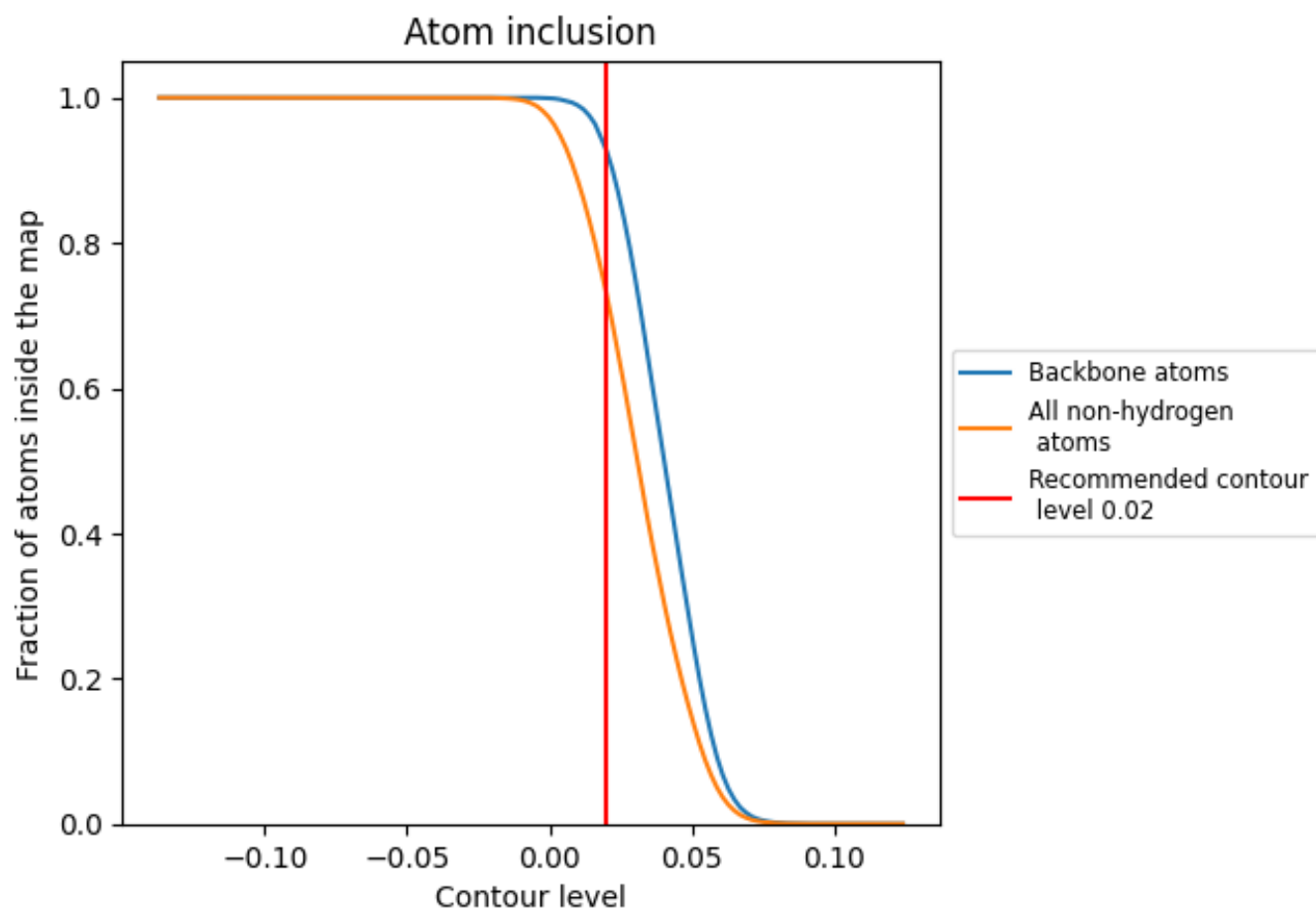
The images above show the model with each residue coloured according its Q-score. This shows their resolvability in the map with higher Q-score values reflecting better resolvability. Please note: Q-score is calculating the resolvability of atoms, and thus high values are only expected at resolutions at which atoms can be resolved. Low Q-score values may therefore be expected for many entries.

9.3 Atom inclusion mapped to coordinate model [i](#)



The images above show the model with each residue coloured according to its atom inclusion. This shows to what extent they are inside the map at the recommended contour level (0.02).















9.4 Atom inclusion [i](#)



At the recommended contour level, 93% of all backbone atoms, 73% of all non-hydrogen atoms, are inside the map.

9.5 Map-model fit summary

The table lists the average atom inclusion at the recommended contour level (0.02) and Q-score for the entire model and for each chain.

Chain	Atom inclusion	Q-score
All	 0.7309	 0.3710
A	 0.7307	 0.3750
B	 0.7321	 0.3760
C	 0.7335	 0.3750
D	 0.7324	 0.3780
E	 0.7325	 0.3770
F	 0.7235	 0.3400

