



Full wwPDB X-ray Structure Validation Report ⓘ

Jun 24, 2024 – 09:32 AM EDT

PDB ID : 6H7D
Title : Crystal Structure of *A. thaliana* Sugar Transport Protein 10 in complex with glucose in the outward occluded state
Authors : Pedersen, B.P.; Paulsen, P.A.; Custodio, T.F.
Deposited on : 2018-07-31
Resolution : 2.40 Å (reported)

This is a Full wwPDB X-ray Structure Validation Report for a publicly released PDB entry.

We welcome your comments at validation@mail.wwpdb.org

A user guide is available at

<https://www.wwpdb.org/validation/2017/XrayValidationReportHelp>

with specific help available everywhere you see the ⓘ symbol.

The types of validation reports are described at

<http://www.wwpdb.org/validation/2017/FAQs#types>.

The following versions of software and data (see [references ⓘ](#)) were used in the production of this report:

MolProbity : 4.02b-467
Mogul : 1.8.5 (274361), CSD as541be (2020)
Xtriage (Phenix) : 1.13
EDS : 2.37.1
buster-report : 1.1.7 (2018)
Percentile statistics : 20191225.v01 (using entries in the PDB archive December 25th 2019)
Refmac : 5.8.0158
CCP4 : 7.0.044 (Gargrove)
Ideal geometry (proteins) : Engh & Huber (2001)
Ideal geometry (DNA, RNA) : Parkinson et al. (1996)
Validation Pipeline (wwPDB-VP) : 2.37.1

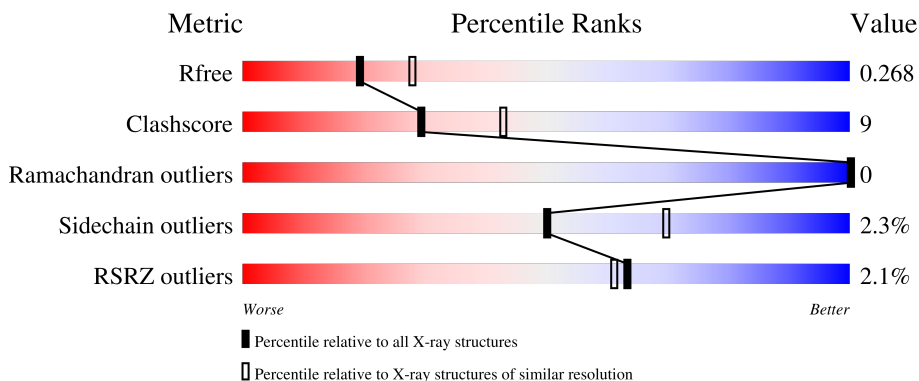
1 Overall quality at a glance

The following experimental techniques were used to determine the structure:

X-RAY DIFFRACTION

The reported resolution of this entry is 2.40 Å.

Percentile scores (ranging between 0-100) for global validation metrics of the entry are shown in the following graphic. The table shows the number of entries on which the scores are based.



Metric	Whole archive (#Entries)	Similar resolution (#Entries, resolution range(Å))
R_{free}	130704	3907 (2.40-2.40)
Clashscore	141614	4398 (2.40-2.40)
Ramachandran outliers	138981	4318 (2.40-2.40)
Sidechain outliers	138945	4319 (2.40-2.40)
RSRZ outliers	127900	3811 (2.40-2.40)

The table below summarises the geometric issues observed across the polymeric chains and their fit to the electron density. The red, orange, yellow and green segments of the lower bar indicate the fraction of residues that contain outliers for ≥ 3 , 2, 1 and 0 types of geometric quality criteria respectively. A grey segment represents the fraction of residues that are not modelled. The numeric value for each fraction is indicated below the corresponding segment, with a dot representing fractions $\leq 5\%$. The upper red bar (where present) indicates the fraction of residues that have poor fit to the electron density. The numeric value is given above the bar.

Mol	Chain	Length	Quality of chain
1	A	521	

The following table lists non-polymeric compounds, carbohydrate monomers and non-standard residues in protein, DNA, RNA chains that are outliers for geometric or electron-density-fit criteria:

Mol	Type	Chain	Res	Chirality	Geometry	Clashes	Electron density
5	OLC	A	604	-	-	-	X

2 Entry composition [i](#)

There are 6 unique types of molecules in this entry. The entry contains 3969 atoms, of which 0 are hydrogens and 0 are deuteriums.

In the tables below, the ZeroOcc column contains the number of atoms modelled with zero occupancy, the AltConf column contains the number of residues with at least one atom in alternate conformation and the Trace column contains the number of residues modelled with at most 2 atoms.

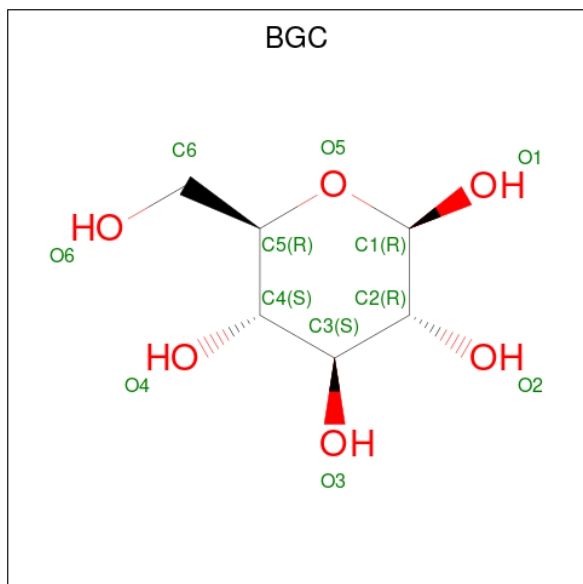
- Molecule 1 is a protein called Sugar transport protein 10.

Mol	Chain	Residues	Atoms					ZeroOcc	AltConf	Trace
			Total	C	N	O	S			
1	A	487	3771	2490	605	644	32	0	0	0

There are 8 discrepancies between the modelled and reference sequences:

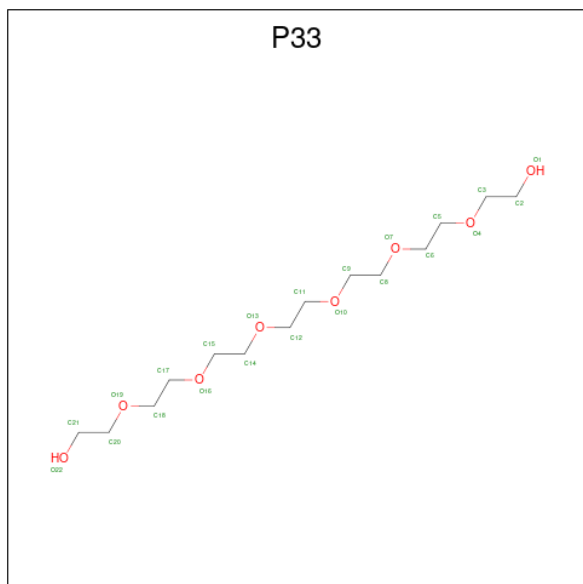
Chain	Residue	Modelled	Actual	Comment	Reference
A	0	MET	-	initiating methionine	UNP Q9LT15
A	1	ALA	-	expression tag	UNP Q9LT15
A	515	PRO	-	expression tag	UNP Q9LT15
A	516	GLY	-	expression tag	UNP Q9LT15
A	517	LEU	-	expression tag	UNP Q9LT15
A	518	VAL	-	expression tag	UNP Q9LT15
A	519	PRO	-	expression tag	UNP Q9LT15
A	520	ARG	-	expression tag	UNP Q9LT15

- Molecule 2 is beta-D-glucopyranose (three-letter code: BGC) (formula: C₆H₁₂O₆) (labeled as "Ligand of Interest" by depositor).



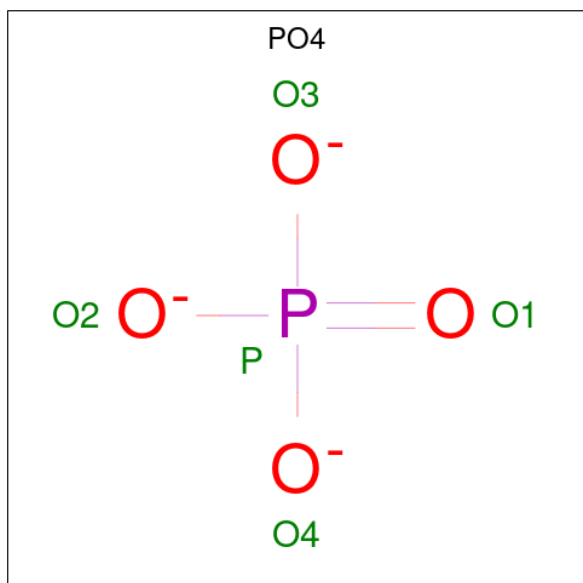
Mol	Chain	Residues	Atoms			ZeroOcc	AltConf
2	A	1	Total	C	O	0	0
			12	6	6		

- Molecule 3 is 3,6,9,12,15,18-HEXA-OXAICOSANE-1,20-DIOL (three-letter code: P33) (formula: $C_{14}H_{30}O_8$).



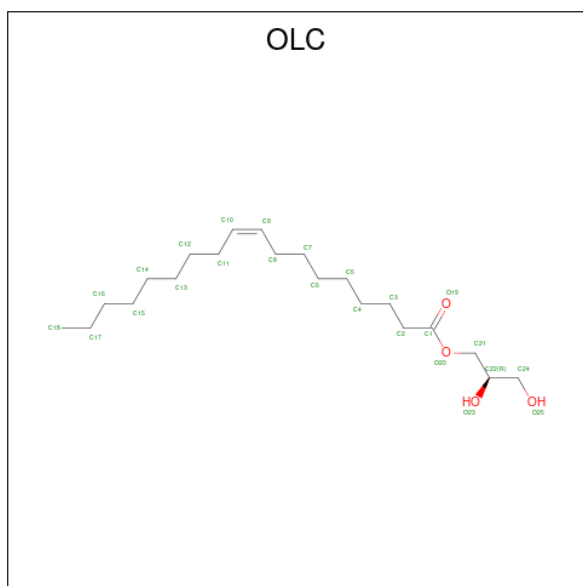
Mol	Chain	Residues	Atoms			ZeroOcc	AltConf
3	A	1	Total	C	O	0	0
			22	14	8		

- Molecule 4 is PHOSPHATE ION (three-letter code: PO4) (formula: O_4P).



Mol	Chain	Residues	Atoms	ZeroOcc	AltConf
4	A	1	Total O P 5 4 1	0	0

- Molecule 5 is (2R)-2,3-dihydroxypropyl (9Z)-octadec-9-enoate (three-letter code: OLC) (formula: C₂₁H₄₀O₄).



Mol	Chain	Residues	Atoms	ZeroOcc	AltConf
5	A	1	Total C O 25 21 4	0	0
5	A	1	Total C O 25 21 4	0	0
5	A	1	Total C O 25 21 4	0	0
5	A	1	Total C O 25 21 4	0	0
5	A	1	Total C O 25 21 4	0	0

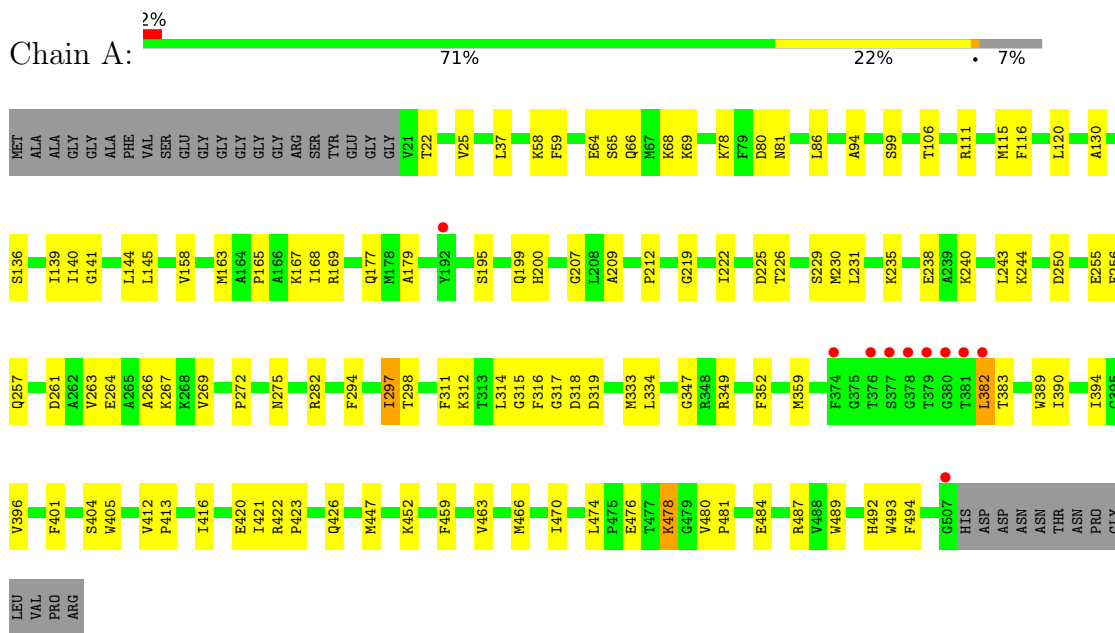
- Molecule 6 is water.

Mol	Chain	Residues	Atoms	ZeroOcc	AltConf
6	A	34	Total O 34 34	0	0

3 Residue-property plots [i](#)

These plots are drawn for all protein, RNA, DNA and oligosaccharide chains in the entry. The first graphic for a chain summarises the proportions of the various outlier classes displayed in the second graphic. The second graphic shows the sequence view annotated by issues in geometry and electron density. Residues are color-coded according to the number of geometric quality criteria for which they contain at least one outlier: green = 0, yellow = 1, orange = 2 and red = 3 or more. A red dot above a residue indicates a poor fit to the electron density ($RSRZ > 2$). Stretches of 2 or more consecutive residues without any outlier are shown as a green connector. Residues present in the sample, but not in the model, are shown in grey.

- Molecule 1: Sugar transport protein 10



4 Data and refinement statistics

Property	Value	Source
Space group	P 1 21 1	Depositor
Cell constants a, b, c, α , β , γ	51.68Å 92.46Å 66.80Å 90.00° 109.37° 90.00°	Depositor
Resolution (Å)	63.02 – 2.40 63.02 – 2.40	Depositor EDS
% Data completeness (in resolution range)	99.8 (63.02-2.40) 99.8 (63.02-2.40)	Depositor EDS
R_{merge}	0.28	Depositor
R_{sym}	(Not available)	Depositor
$\langle I/\sigma(I) \rangle$ ¹	1.21 (at 2.40Å)	Xtrriage
Refinement program	PHENIX 1.13rc1	Depositor
R, R_{free}	0.203 , 0.268 0.203 , 0.268	Depositor DCC
R_{free} test set	1161 reflections (5.00%)	wwPDB-VP
Wilson B-factor (Å ²)	41.3	Xtrriage
Anisotropy	0.452	Xtrriage
Bulk solvent k_{sol} (e/Å ³), B_{sol} (Å ²)	0.35 , 62.7	EDS
L-test for twinning ²	$\langle L \rangle = 0.50$, $\langle L^2 \rangle = 0.33$	Xtrriage
Estimated twinning fraction	No twinning to report.	Xtrriage
F_o, F_c correlation	0.95	EDS
Total number of atoms	3969	wwPDB-VP
Average B, all atoms (Å ²)	54.0	wwPDB-VP

Xtrriage's analysis on translational NCS is as follows: *The largest off-origin peak in the Patterson function is 7.36% of the height of the origin peak. No significant pseudotranslation is detected.*

¹Intensities estimated from amplitudes.

²Theoretical values of $\langle |L| \rangle$, $\langle L^2 \rangle$ for acentric reflections are 0.5, 0.333 respectively for untwinned datasets, and 0.375, 0.2 for perfectly twinned datasets.

5 Model quality [i](#)

5.1 Standard geometry [i](#)

Bond lengths and bond angles in the following residue types are not validated in this section: BGC, PO4, P33, OLC

The Z score for a bond length (or angle) is the number of standard deviations the observed value is removed from the expected value. A bond length (or angle) with $|Z| > 5$ is considered an outlier worth inspection. RMSZ is the root-mean-square of all Z scores of the bond lengths (or angles).

Mol	Chain	Bond lengths		Bond angles	
		RMSZ	# $ Z > 5$	RMSZ	# $ Z > 5$
1	A	0.42	0/3866	0.57	1/5235 (0.0%)

Chiral center outliers are detected by calculating the chiral volume of a chiral center and verifying if the center is modelled as a planar moiety or with the opposite hand. A planarity outlier is detected by checking planarity of atoms in a peptide group, atoms in a mainchain group or atoms of a sidechain that are expected to be planar.

Mol	Chain	#Chirality outliers	#Planarity outliers
1	A	0	2

There are no bond length outliers.

All (1) bond angle outliers are listed below:

Mol	Chain	Res	Type	Atoms	Z	Observed($^{\circ}$)	Ideal($^{\circ}$)
1	A	382	LEU	CA-CB-CG	5.12	127.08	115.30

There are no chirality outliers.

All (2) planarity outliers are listed below:

Mol	Chain	Res	Type	Group
1	A	297	ILE	Peptide
1	A	317	GLY	Peptide

5.2 Too-close contacts [i](#)

In the following table, the Non-H and H(model) columns list the number of non-hydrogen atoms and hydrogen atoms in the chain respectively. The H(added) column lists the number of hydrogen atoms added and optimized by MolProbity. The Clashes column lists the number of clashes within the asymmetric unit, whereas Symm-Clashes lists symmetry-related clashes.

Mol	Chain	Non-H	H(model)	H(added)	Clashes	Symm-Clashes
1	A	3771	0	3848	76	0
2	A	12	0	11	1	0
3	A	22	0	30	0	0
4	A	5	0	0	1	0
5	A	125	0	200	6	0
6	A	34	0	0	1	0
All	All	3969	0	4089	76	0

The all-atom clashscore is defined as the number of clashes found per 1000 atoms (including hydrogen atoms). The all-atom clashscore for this structure is 9.

All (76) close contacts within the same asymmetric unit are listed below, sorted by their clash magnitude.

Atom-1	Atom-2	Interatomic distance (Å)	Clash overlap (Å)
1:A:230:MET:HG2	1:A:235:LYS:CE	1.91	0.99
1:A:230:MET:HG2	1:A:235:LYS:HE2	1.53	0.89
1:A:169:ARG:NH2	1:A:480:VAL:O	2.13	0.77
1:A:492:HIS:ND1	1:A:493:TRP:O	2.22	0.72
1:A:396:VAL:HG21	5:A:605:OLC:H5A	1.73	0.70
1:A:476:GLU:CG	1:A:478:LYS:HD3	2.23	0.69
1:A:481:PRO:HB2	1:A:484:GLU:HG3	1.76	0.68
1:A:230:MET:HG2	1:A:235:LYS:NZ	2.08	0.67
1:A:158:VAL:HG23	1:A:426:GLN:HG3	1.79	0.64
1:A:163:MET:HE2	1:A:226:THR:HG22	1.81	0.62
1:A:230:MET:HE2	1:A:238:GLU:HB3	1.81	0.61
1:A:243:LEU:HD21	1:A:255:GLU:HG3	1.83	0.61
1:A:347:GLY:HA2	1:A:478:LYS:HD2	1.83	0.59
1:A:106:THR:HG23	1:A:111:ARG:HG3	1.83	0.59
1:A:347:GLY:CA	1:A:478:LYS:HD2	2.33	0.58
1:A:199:GLN:HG2	1:A:200:HIS:CE1	2.39	0.57
1:A:389:TRP:CZ2	5:A:605:OLC:H21	2.41	0.55
1:A:396:VAL:HG11	5:A:605:OLC:H8	1.88	0.54
1:A:37:LEU:HD11	5:A:606:OLC:H10	1.89	0.53
1:A:272:PRO:HB3	1:A:421:ILE:HG22	1.90	0.53
1:A:163:MET:CE	1:A:226:THR:HG22	2.39	0.53
1:A:298:THR:HG21	1:A:401:PHE:CD2	2.44	0.53
1:A:94:ALA:HA	5:A:603:OLC:H14	1.91	0.53
1:A:294:PHE:HA	1:A:297:ILE:HG22	1.91	0.52
1:A:209:ALA:O	1:A:212:PRO:HD2	2.10	0.52
1:A:200:HIS:ND1	4:A:602:PO4:O1	2.40	0.51
1:A:349:ARG:NH1	1:A:474:LEU:O	2.44	0.50
1:A:390:ILE:O	1:A:394:ILE:HG13	2.12	0.50

Continued on next page...

Continued from previous page...

Atom-1	Atom-2	Interatomic distance (Å)	Clash overlap (Å)
1:A:230:MET:CG	1:A:235:LYS:HE2	2.34	0.50
1:A:447:MET:HB3	1:A:452:LYS:HB2	1.94	0.50
1:A:257:GLN:NE2	1:A:261:ASP:OD1	2.35	0.50
1:A:266:ALA:HA	1:A:420:GLU:HB3	1.94	0.49
1:A:282:ARG:HH11	1:A:282:ARG:HA	1.77	0.49
1:A:459:PHE:O	1:A:463:VAL:HG23	2.13	0.48
1:A:219:GLY:O	1:A:222:ILE:HG22	2.14	0.48
1:A:298:THR:HG23	1:A:359:MET:CE	2.43	0.48
1:A:311:PHE:O	1:A:316:PHE:HB2	2.14	0.48
1:A:404:SER:OG	1:A:405:TRP:N	2.43	0.48
1:A:116:PHE:CZ	1:A:120:LEU:HD13	2.48	0.48
1:A:64:GLU:OE2	1:A:68:LYS:HE2	2.15	0.47
1:A:230:MET:HG2	1:A:235:LYS:HZ3	1.80	0.47
1:A:312:LYS:O	6:A:701:HOH:O	2.20	0.47
1:A:422:ARG:HB3	1:A:423:PRO:HD3	1.98	0.46
1:A:231:LEU:HG	1:A:263:VAL:HG21	1.97	0.46
1:A:314:LEU:HB3	1:A:382:LEU:HG	1.97	0.46
1:A:484:GLU:OE1	1:A:487:ARG:NH2	2.49	0.46
1:A:416:ILE:HB	1:A:489:TRP:HZ2	1.79	0.45
1:A:141:GLY:O	1:A:145:LEU:HG	2.14	0.45
1:A:352:PHE:HB3	1:A:470:ILE:HG21	1.97	0.45
1:A:37:LEU:HD23	1:A:179:ALA:O	2.17	0.45
1:A:130:ALA:HB2	1:A:207:GLY:HA2	1.99	0.45
1:A:463:VAL:HA	1:A:466:MET:HG2	1.98	0.45
1:A:493:TRP:CE3	1:A:494:PHE:HB2	2.51	0.45
1:A:86:LEU:HD23	1:A:86:LEU:HA	1.64	0.44
1:A:177:GLN:OE1	2:A:600:BGC:O1	2.35	0.44
1:A:264:GLU:HA	1:A:267:LYS:HE2	2.00	0.44
1:A:130:ALA:HB2	1:A:207:GLY:CA	2.48	0.43
1:A:140:ILE:O	1:A:144:LEU:HD23	2.18	0.43
1:A:244:LYS:HD2	1:A:250:ASP:HA	2.00	0.43
1:A:298:THR:HG23	1:A:359:MET:HE1	2.00	0.43
1:A:225:ASP:OD2	1:A:229:SER:HB3	2.18	0.43
1:A:66:GLN:HA	1:A:69:LYS:HG2	2.01	0.42
1:A:359:MET:HB3	1:A:359:MET:HE2	1.82	0.42
1:A:136:SER:O	1:A:140:ILE:HD13	2.18	0.42
1:A:165:PRO:HG2	1:A:168:ILE:HG12	2.01	0.42
1:A:333:MET:HG2	1:A:334:LEU:H	1.84	0.42
1:A:111:ARG:O	1:A:115:MET:HG3	2.19	0.42
1:A:269:VAL:HG13	1:A:275:ASN:OD1	2.20	0.42
1:A:139:ILE:HG12	5:A:603:OLC:H2	2.02	0.41

Continued on next page...

Continued from previous page...

Atom-1	Atom-2	Interatomic distance (Å)	Clash overlap (Å)
1:A:315:GLY:O	1:A:316:PHE:HB2	2.21	0.41
1:A:240:LYS:HB2	1:A:256:PHE:CZ	2.55	0.41
1:A:476:GLU:HG3	1:A:478:LYS:HD3	2.02	0.41
1:A:58:LYS:HD3	1:A:59:PHE:CZ	2.56	0.40
1:A:78:LYS:C	1:A:80:ASP:H	2.25	0.40
1:A:22:THR:H	1:A:25:VAL:HG12	1.87	0.40
1:A:412:VAL:HB	1:A:413:PRO:HD3	2.03	0.40

There are no symmetry-related clashes.

5.3 Torsion angles [i](#)

5.3.1 Protein backbone [i](#)

In the following table, the Percentiles column shows the percent Ramachandran outliers of the chain as a percentile score with respect to all X-ray entries followed by that with respect to entries of similar resolution.

The Analysed column shows the number of residues for which the backbone conformation was analysed, and the total number of residues.

Mol	Chain	Analysed	Favoured	Allowed	Outliers	Percentiles
1	A	485/521 (93%)	464 (96%)	21 (4%)	0	100 100

There are no Ramachandran outliers to report.

5.3.2 Protein sidechains [i](#)

In the following table, the Percentiles column shows the percent sidechain outliers of the chain as a percentile score with respect to all X-ray entries followed by that with respect to entries of similar resolution.

The Analysed column shows the number of residues for which the sidechain conformation was analysed, and the total number of residues.

Mol	Chain	Analysed	Rotameric	Outliers	Percentiles
1	A	396/417 (95%)	387 (98%)	9 (2%)	50 70

All (9) residues with a non-rotameric sidechain are listed below:

Mol	Chain	Res	Type
1	A	65	SER
1	A	81	ASN
1	A	99	SER
1	A	167	LYS
1	A	195	SER
1	A	318	ASP
1	A	319	ASP
1	A	383	THR
1	A	478	LYS

Sometimes sidechains can be flipped to improve hydrogen bonding and reduce clashes. All (1) such sidechains are listed below:

Mol	Chain	Res	Type
1	A	134	ASN

5.3.3 RNA [i](#)

There are no RNA molecules in this entry.

5.4 Non-standard residues in protein, DNA, RNA chains [i](#)

There are no non-standard protein/DNA/RNA residues in this entry.

5.5 Carbohydrates [i](#)

There are no monosaccharides in this entry.

5.6 Ligand geometry [i](#)

8 ligands are modelled in this entry.

In the following table, the Counts columns list the number of bonds (or angles) for which Mogul statistics could be retrieved, the number of bonds (or angles) that are observed in the model and the number of bonds (or angles) that are defined in the Chemical Component Dictionary. The Link column lists molecule types, if any, to which the group is linked. The Z score for a bond length (or angle) is the number of standard deviations the observed value is removed from the expected value. A bond length (or angle) with $|Z| > 2$ is considered an outlier worth inspection. RMSZ is the root-mean-square of all Z scores of the bond lengths (or angles).

Mol	Type	Chain	Res	Link	Bond lengths			Bond angles		
					Counts	RMSZ	# Z > 2	Counts	RMSZ	# Z > 2
5	OLC	A	606	-	24,24,24	0.88	1 (4%)	25,25,25	1.05	1 (4%)
2	BGC	A	600	-	12,12,12	1.24	1 (8%)	17,17,17	0.78	0
3	P33	A	601	-	21,21,21	0.56	0	20,20,20	0.47	0
5	OLC	A	607	-	24,24,24	0.83	1 (4%)	25,25,25	0.90	1 (4%)
5	OLC	A	604	-	24,24,24	0.85	1 (4%)	25,25,25	0.94	1 (4%)
4	PO4	A	602	-	4,4,4	0.91	0	6,6,6	0.44	0
5	OLC	A	603	-	24,24,24	0.87	1 (4%)	25,25,25	1.07	1 (4%)
5	OLC	A	605	-	24,24,24	0.82	2 (8%)	25,25,25	1.06	1 (4%)

In the following table, the Chirals column lists the number of chiral outliers, the number of chiral centers analysed, the number of these observed in the model and the number defined in the Chemical Component Dictionary. Similar counts are reported in the Torsion and Rings columns. '-' means no outliers of that kind were identified.

Mol	Type	Chain	Res	Link	Chirals	Torsions	Rings
5	OLC	A	606	-	-	7/24/24/24	-
2	BGC	A	600	-	-	0/2/22/22	0/1/1/1
3	P33	A	601	-	-	12/19/19/19	-
5	OLC	A	607	-	-	11/24/24/24	-
5	OLC	A	604	-	-	13/24/24/24	-
5	OLC	A	603	-	-	9/24/24/24	-
5	OLC	A	605	-	-	11/24/24/24	-

All (7) bond length outliers are listed below:

Mol	Chain	Res	Type	Atoms	Z	Observed(Å)	Ideal(Å)
5	A	603	OLC	O20-C1	2.99	1.42	1.33
2	A	600	BGC	O5-C1	2.98	1.50	1.42
5	A	604	OLC	O20-C1	2.77	1.41	1.33
5	A	606	OLC	O20-C1	2.76	1.41	1.33
5	A	607	OLC	O20-C1	2.69	1.41	1.33
5	A	605	OLC	O20-C1	2.43	1.40	1.33
5	A	605	OLC	O20-C21	-2.07	1.40	1.45

All (5) bond angle outliers are listed below:

Mol	Chain	Res	Type	Atoms	Z	Observed(°)	Ideal(°)
5	A	606	OLC	O20-C1-C2	3.51	122.93	111.91
5	A	603	OLC	O20-C1-C2	2.99	121.30	111.91

Continued on next page...

Continued from previous page...

Mol	Chain	Res	Type	Atoms	Z	Observed(°)	Ideal(°)
5	A	605	OLC	O20-C1-C2	2.81	120.72	111.91
5	A	604	OLC	O20-C1-C2	2.73	120.48	111.91
5	A	607	OLC	O20-C1-C2	2.38	119.39	111.91

There are no chirality outliers.

All (63) torsion outliers are listed below:

Mol	Chain	Res	Type	Atoms
5	A	603	OLC	O20-C21-C22-C24
5	A	604	OLC	O20-C21-C22-C24
5	A	606	OLC	O19-C1-O20-C21
5	A	606	OLC	C2-C1-O20-C21
5	A	607	OLC	C2-C1-O20-C21
3	A	601	P33	C12-C11-O10-C9
5	A	603	OLC	O20-C21-C22-O23
3	A	601	P33	C9-C8-O7-C6
5	A	607	OLC	O19-C1-O20-C21
5	A	605	OLC	C2-C1-O20-C21
3	A	601	P33	O10-C11-C12-O13
5	A	604	OLC	O20-C21-C22-O23
5	A	605	OLC	O19-C1-O20-C21
5	A	606	OLC	C1-C2-C3-C4
3	A	601	P33	O1-C2-C3-O4
3	A	601	P33	O19-C20-C21-O22
3	A	601	P33	O7-C8-C9-O10
5	A	604	OLC	C5-C6-C7-C8
5	A	604	OLC	C4-C5-C6-C7
5	A	606	OLC	C4-C5-C6-C7
5	A	606	OLC	C5-C6-C7-C8
5	A	607	OLC	C11-C12-C13-C14
5	A	607	OLC	C2-C3-C4-C5
5	A	603	OLC	C21-C22-C24-O25
5	A	605	OLC	C21-C22-C24-O25
5	A	603	OLC	C4-C5-C6-C7
5	A	607	OLC	C14-C15-C16-C17
5	A	607	OLC	C12-C13-C14-C15
5	A	604	OLC	C14-C15-C16-C17
5	A	603	OLC	C11-C12-C13-C14
5	A	607	OLC	C10-C11-C12-C13
5	A	605	OLC	C5-C6-C7-C8
5	A	606	OLC	C11-C12-C13-C14
5	A	604	OLC	C10-C11-C12-C13

Continued on next page...

Continued from previous page...

Mol	Chain	Res	Type	Atoms
5	A	605	OLC	C15-C16-C17-C18
5	A	604	OLC	C3-C4-C5-C6
5	A	605	OLC	O23-C22-C24-O25
5	A	604	OLC	C2-C3-C4-C5
5	A	603	OLC	C15-C16-C17-C18
5	A	605	OLC	C3-C4-C5-C6
3	A	601	P33	C2-C3-O4-C5
3	A	601	P33	C5-C6-O7-C8
5	A	604	OLC	C2-C1-O20-C21
5	A	607	OLC	C1-C2-C3-C4
5	A	604	OLC	O19-C1-O20-C21
5	A	607	OLC	C3-C4-C5-C6
5	A	607	OLC	C4-C5-C6-C7
3	A	601	P33	C6-C5-O4-C3
5	A	604	OLC	C15-C16-C17-C18
5	A	605	OLC	C7-C8-C9-C10
3	A	601	P33	C18-C17-O16-C15
5	A	604	OLC	C9-C10-C11-C12
5	A	605	OLC	C9-C10-C11-C12
5	A	605	OLC	C14-C15-C16-C17
5	A	603	OLC	C9-C10-C11-C12
5	A	603	OLC	C7-C8-C9-C10
5	A	606	OLC	C7-C8-C9-C10
3	A	601	P33	O4-C5-C6-O7
5	A	605	OLC	C13-C14-C15-C16
5	A	604	OLC	C7-C8-C9-C10
5	A	603	OLC	O23-C22-C24-O25
5	A	607	OLC	C7-C8-C9-C10
3	A	601	P33	O16-C17-C18-O19

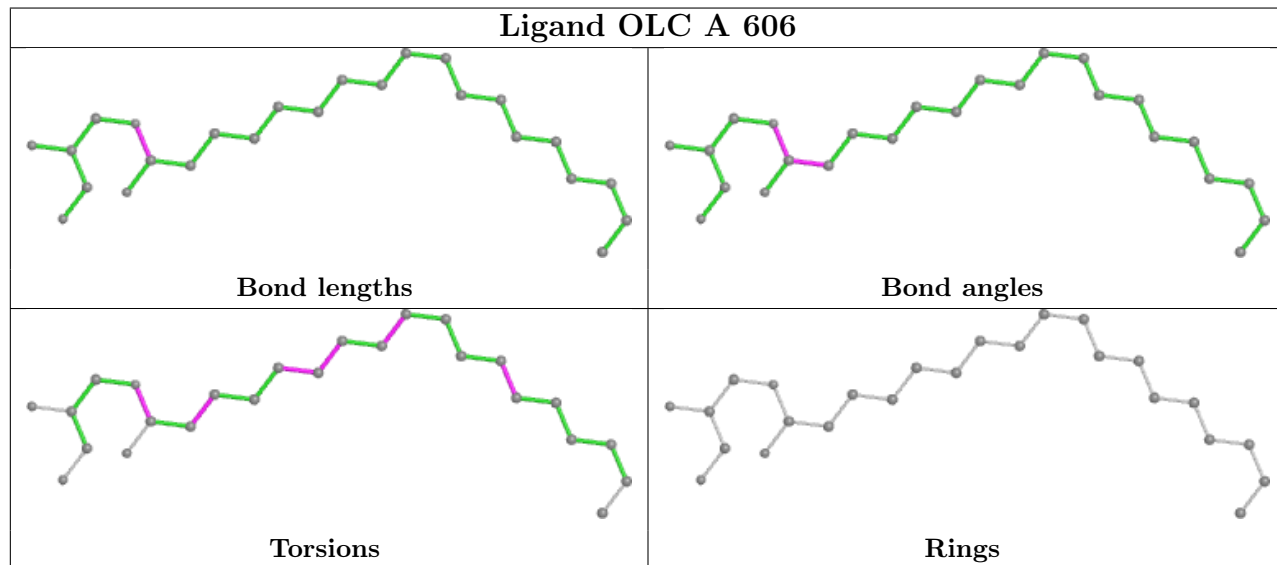
There are no ring outliers.

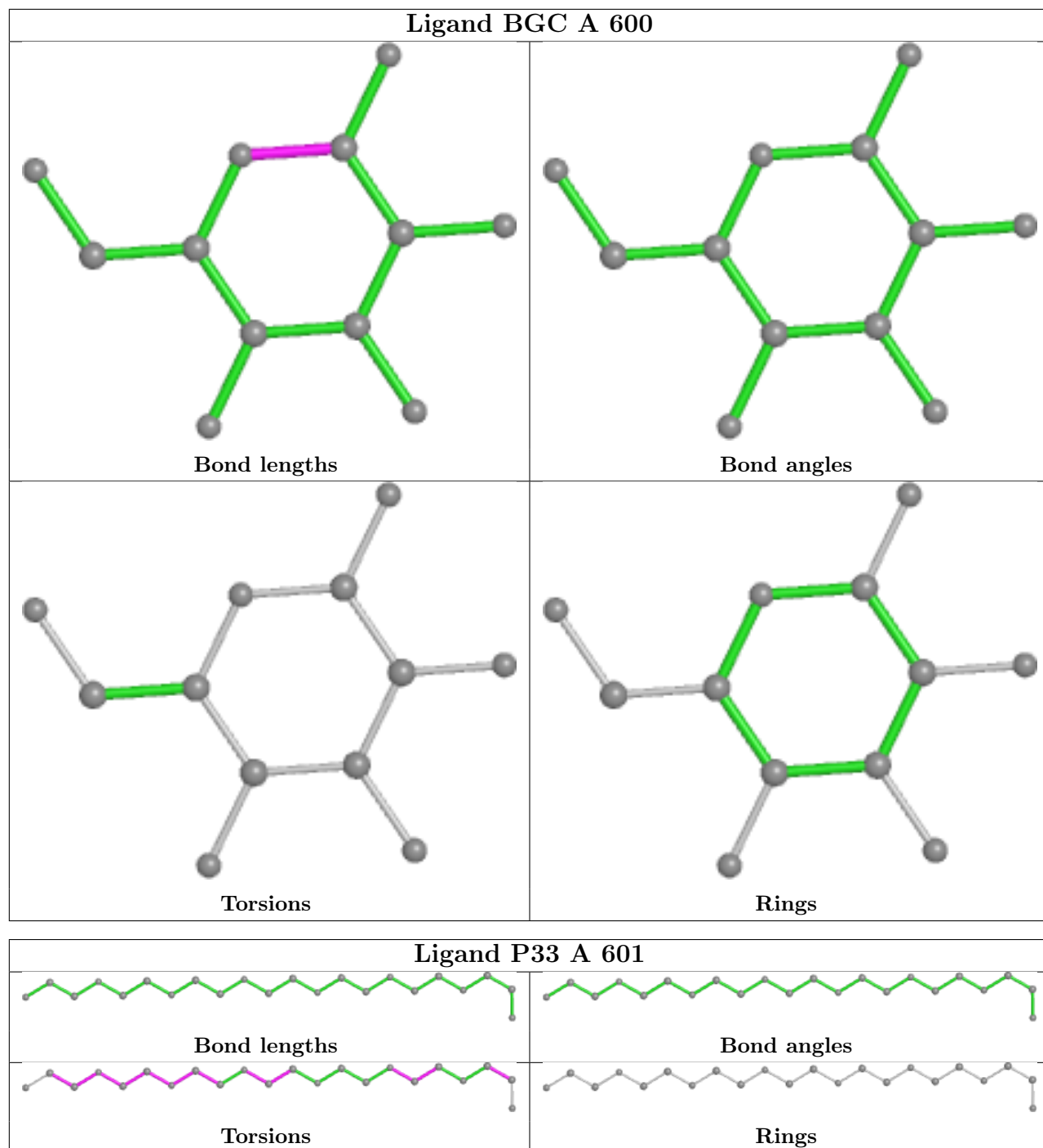
5 monomers are involved in 8 short contacts:

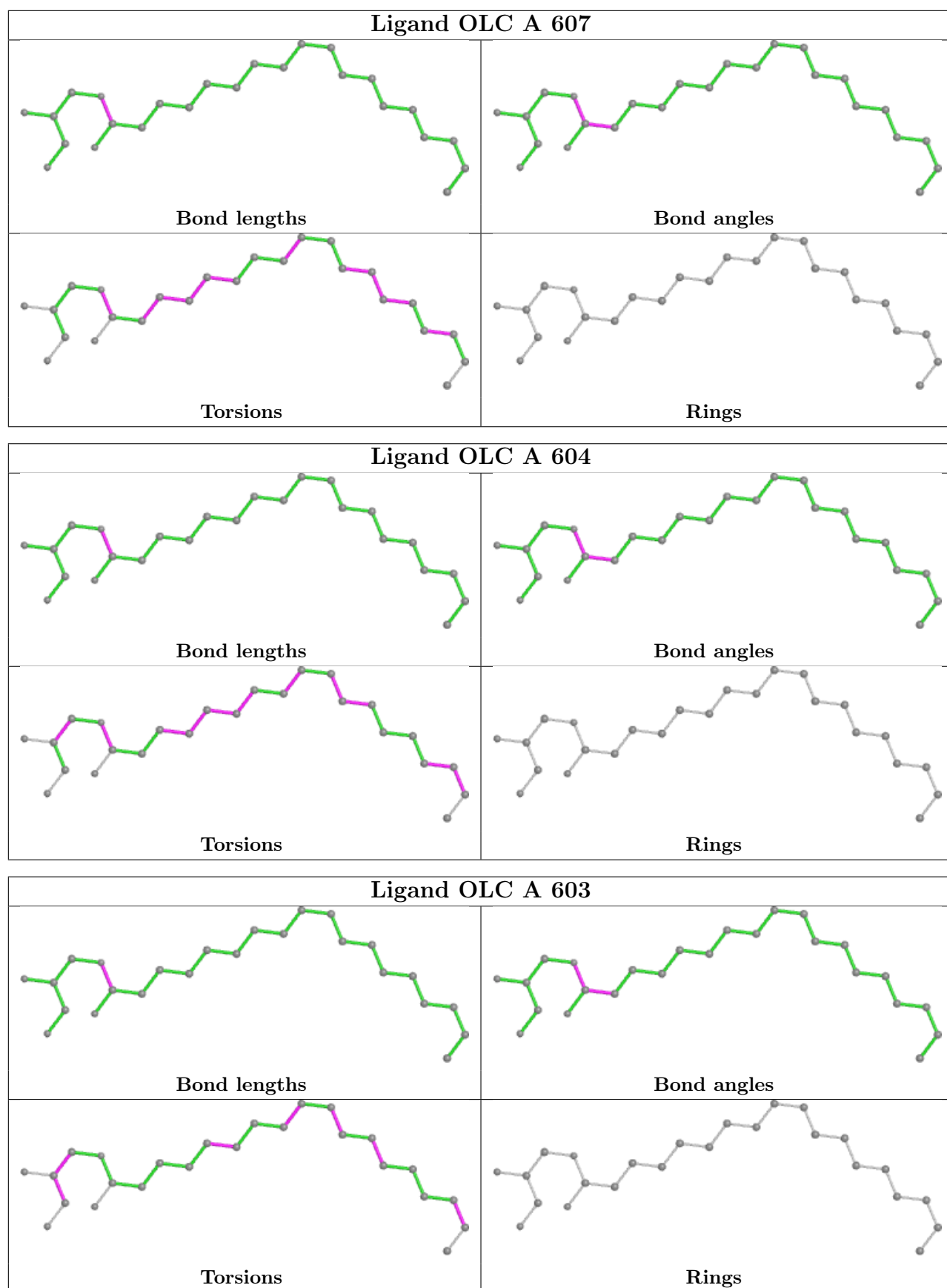
Mol	Chain	Res	Type	Clashes	Symm-Clashes
5	A	606	OLC	1	0
2	A	600	BGC	1	0
4	A	602	PO4	1	0
5	A	603	OLC	2	0
5	A	605	OLC	3	0

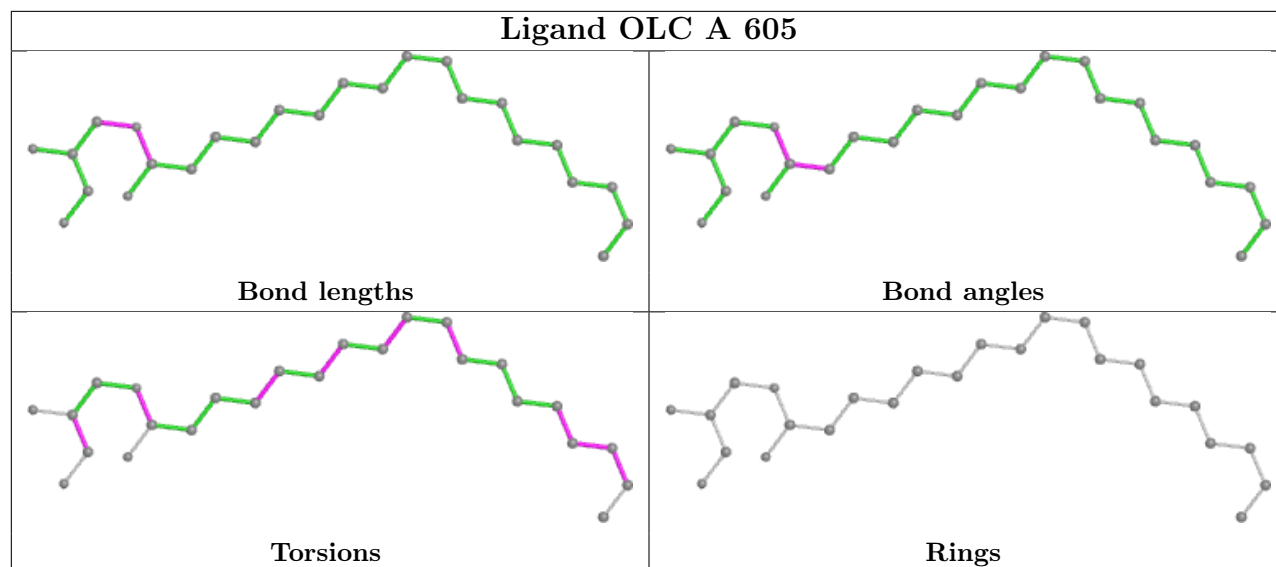
The following is a two-dimensional graphical depiction of Mogul quality analysis of bond lengths, bond angles, torsion angles, and ring geometry for all instances of the Ligand of Interest. In

addition, ligands with molecular weight > 250 and outliers as shown on the validation Tables will also be included. For torsion angles, if less than 5% of the Mogul distribution of torsion angles is within 10 degrees of the torsion angle in question, then that torsion angle is considered an outlier. Any bond that is central to one or more torsion angles identified as an outlier by Mogul will be highlighted in the graph. For rings, the root-mean-square deviation (RMSD) between the ring in question and similar rings identified by Mogul is calculated over all ring torsion angles. If the average RMSD is greater than 60 degrees and the minimal RMSD between the ring in question and any Mogul-identified rings is also greater than 60 degrees, then that ring is considered an outlier. The outliers are highlighted in purple. The color gray indicates Mogul did not find sufficient equivalents in the CSD to analyse the geometry.









5.7 Other polymers [\(i\)](#)

There are no such residues in this entry.

5.8 Polymer linkage issues [\(i\)](#)

There are no chain breaks in this entry.

6 Fit of model and data [i](#)

6.1 Protein, DNA and RNA chains [i](#)

In the following table, the column labelled '#RSRZ > 2' contains the number (and percentage) of RSRZ outliers, followed by percent RSRZ outliers for the chain as percentile scores relative to all X-ray entries and entries of similar resolution. The OWAB column contains the minimum, median, 95th percentile and maximum values of the occupancy-weighted average B-factor per residue. The column labelled 'Q < 0.9' lists the number of (and percentage) of residues with an average occupancy less than 0.9.

Mol	Chain	Analysed	<RSRZ>	#RSRZ>2	OWAB(Å ²)	Q<0.9
1	A	487/521 (93%)	-0.00	10 (2%) 63 61	31, 49, 84, 159	0

All (10) RSRZ outliers are listed below:

Mol	Chain	Res	Type	RSRZ
1	A	378	GLY	13.2
1	A	377	SER	10.0
1	A	376	THR	8.1
1	A	379	THR	6.0
1	A	382	LEU	5.1
1	A	380	GLY	4.6
1	A	381	THR	3.1
1	A	192	TYR	3.0
1	A	507	GLY	2.6
1	A	374	PHE	2.1

6.2 Non-standard residues in protein, DNA, RNA chains [i](#)

There are no non-standard protein/DNA/RNA residues in this entry.

6.3 Carbohydrates [i](#)

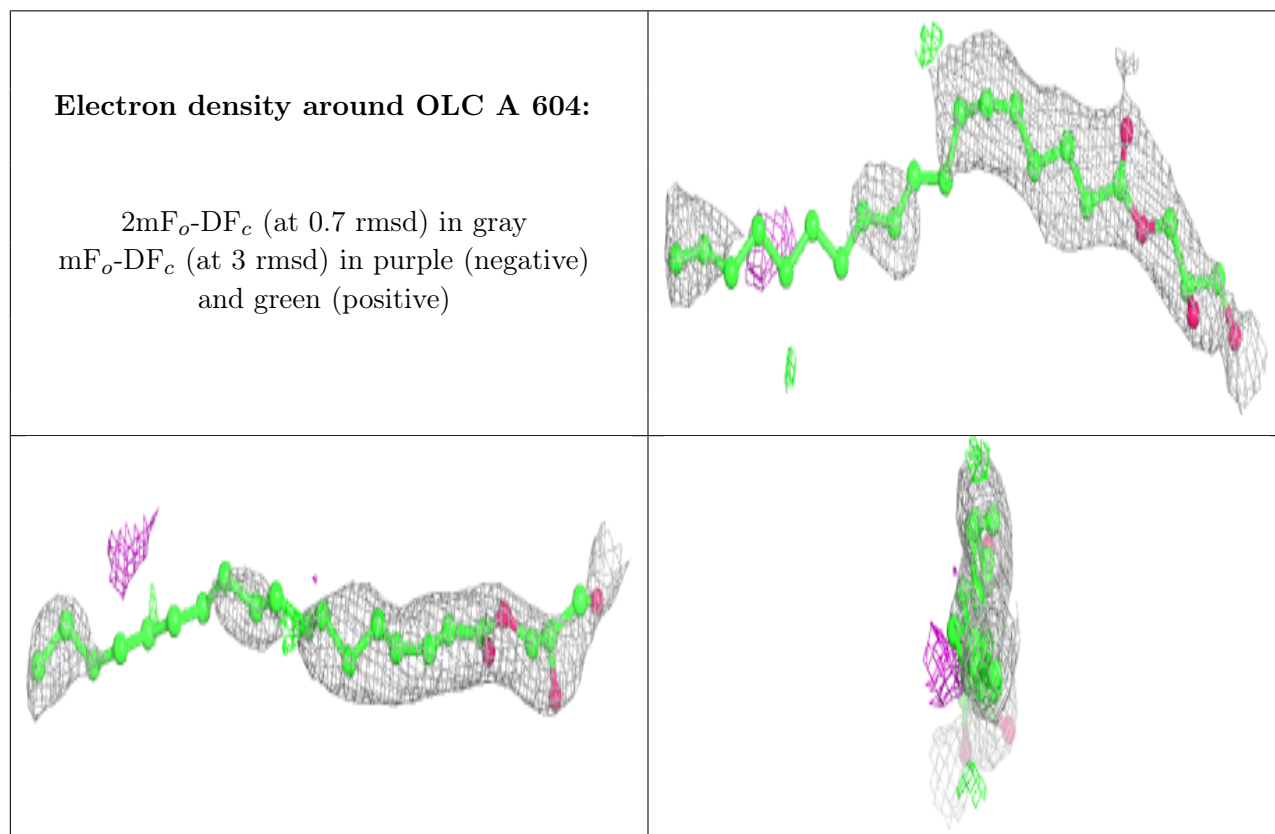
There are no monosaccharides in this entry.

6.4 Ligands [i](#)

In the following table, the Atoms column lists the number of modelled atoms in the group and the number defined in the chemical component dictionary. The B-factors column lists the minimum, median, 95th percentile and maximum values of B factors of atoms in the group. The column labelled 'Q < 0.9' lists the number of atoms with occupancy less than 0.9.

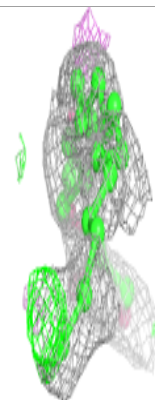
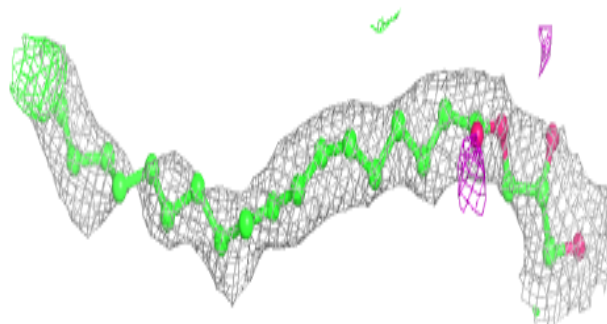
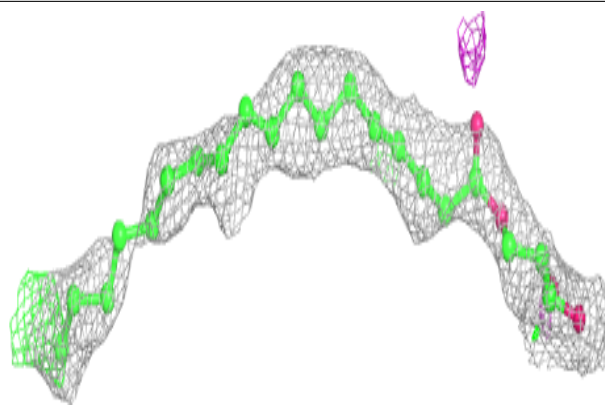
Mol	Type	Chain	Res	Atoms	RSCC	RSR	B-factors(\AA^2)	Q<0.9
5	OLC	A	604	25/25	0.73	0.41	63,82,89,90	0
5	OLC	A	606	25/25	0.75	0.30	55,67,85,91	0
5	OLC	A	605	25/25	0.80	0.31	52,69,93,96	0
5	OLC	A	607	25/25	0.85	0.22	49,67,98,104	0
5	OLC	A	603	25/25	0.86	0.20	60,77,88,89	0
3	P33	A	601	22/22	0.89	0.17	38,53,69,73	0
4	PO4	A	602	5/5	0.97	0.15	49,65,72,74	0
2	BGC	A	600	12/12	0.97	0.13	26,33,39,41	0

The following is a graphical depiction of the model fit to experimental electron density of all instances of the Ligand of Interest. In addition, ligands with molecular weight > 250 and outliers as shown on the geometry validation Tables will also be included. Each fit is shown from different orientation to approximate a three-dimensional view.

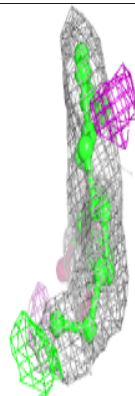
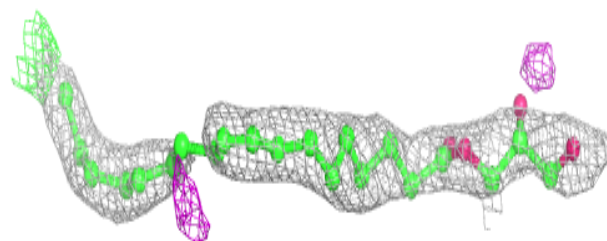
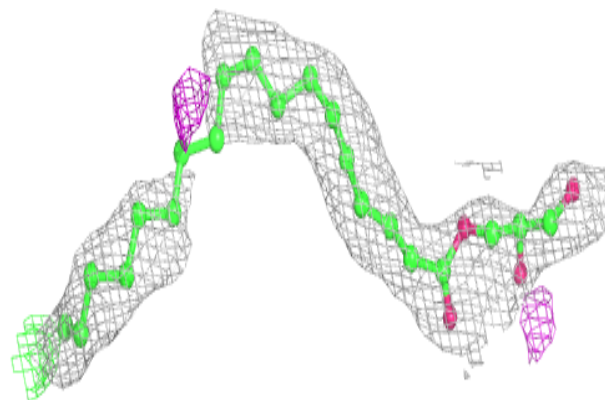


Electron density around OLC A 606:

$2mF_o-DF_c$ (at 0.7 rmsd) in gray
 mF_o-DF_c (at 3 rmsd) in purple (negative)
and green (positive)

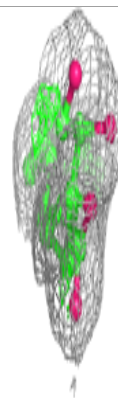
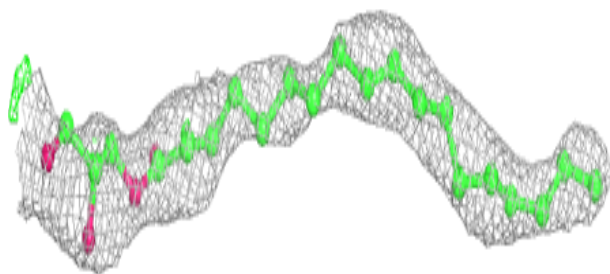
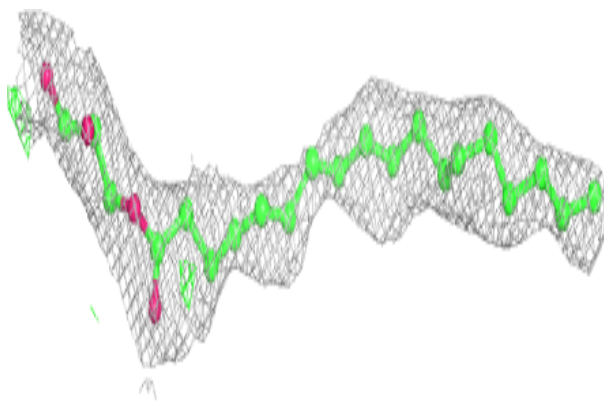
**Electron density around OLC A 605:**

$2mF_o-DF_c$ (at 0.7 rmsd) in gray
 mF_o-DF_c (at 3 rmsd) in purple (negative)
and green (positive)

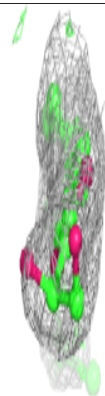
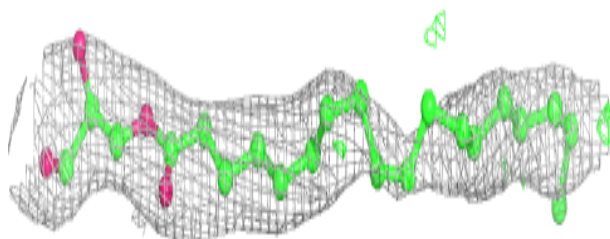
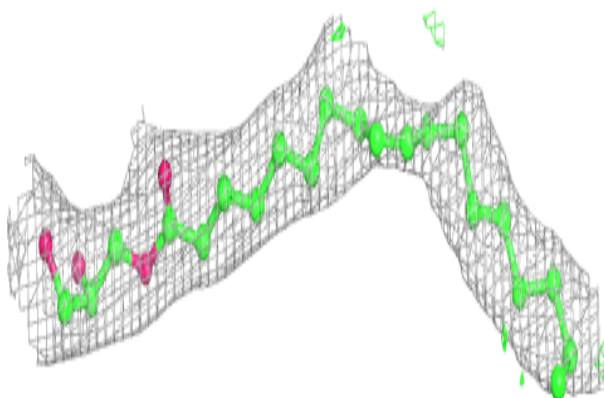


Electron density around OLC A 607:

$2mF_o-DF_c$ (at 0.7 rmsd) in gray
 mF_o-DF_c (at 3 rmsd) in purple (negative)
and green (positive)

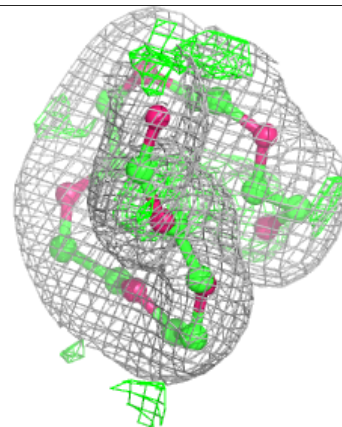
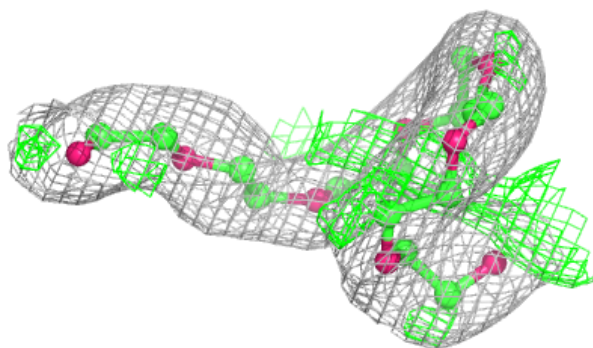
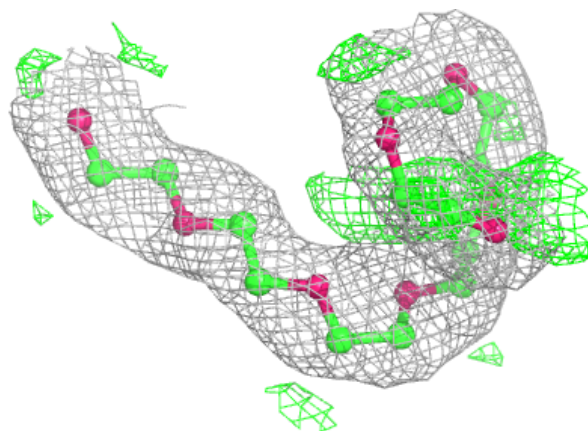
**Electron density around OLC A 603:**

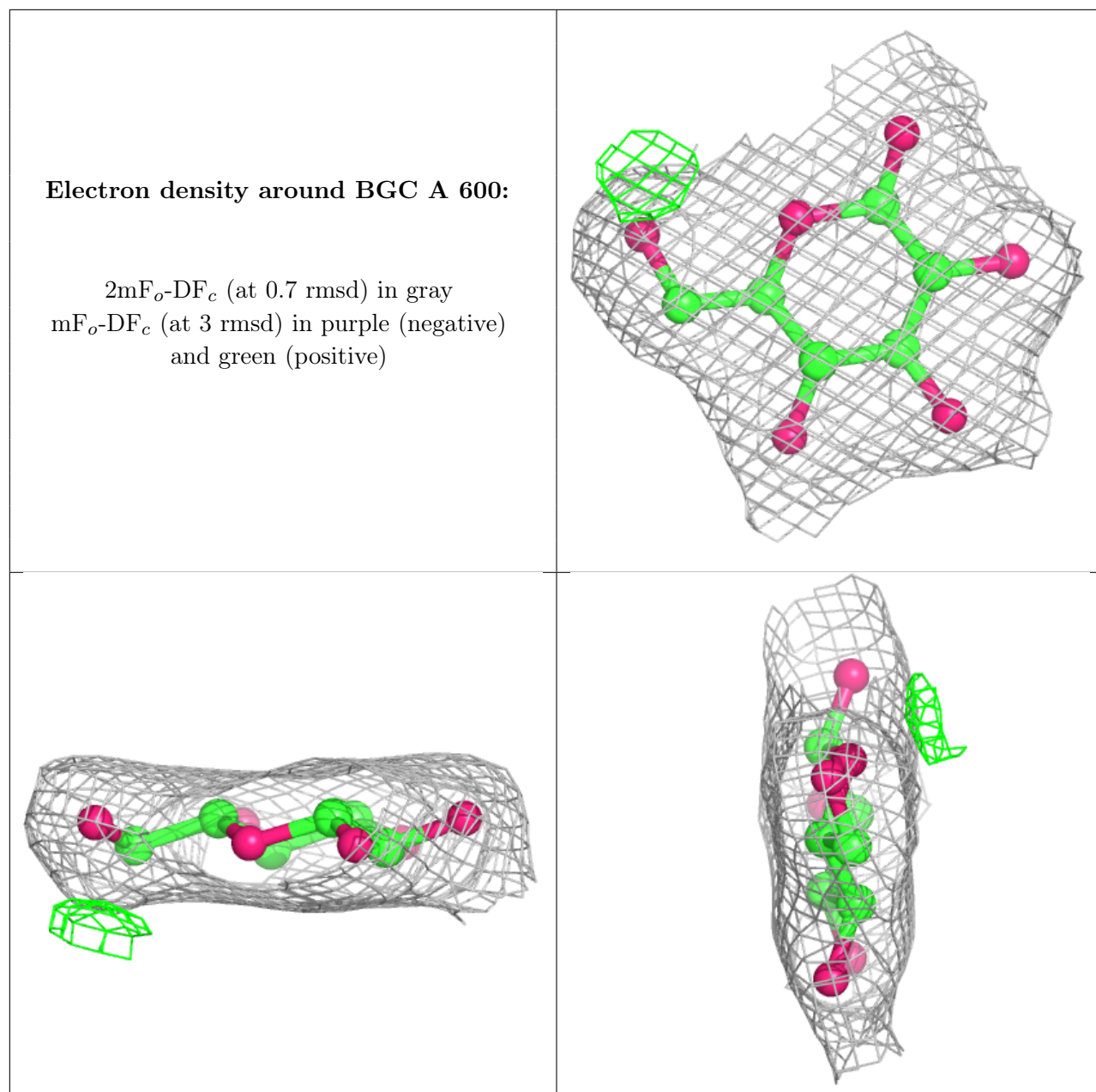
$2mF_o-DF_c$ (at 0.7 rmsd) in gray
 mF_o-DF_c (at 3 rmsd) in purple (negative)
and green (positive)



Electron density around P33 A 601:

$2mF_o-DF_c$ (at 0.7 rmsd) in gray
 mF_o-DF_c (at 3 rmsd) in purple (negative)
and green (positive)





6.5 Other polymers [i](#)

There are no such residues in this entry.