



# wwPDB X-ray Structure Validation Summary Report ⓘ

Sep 10, 2023 – 06:33 AM EDT

PDB ID : 4H9L  
Title : Bacterial Photosynthetic Reaction Center from Rhodobacter sphaeroides with ILE M265 replaced with SER  
Authors : Mattis, A.J.; Wraight, C.A.  
Deposited on : 2012-09-24  
Resolution : 2.77 Å(reported)

This is a wwPDB X-ray Structure Validation Summary Report for a publicly released PDB entry.

We welcome your comments at [validation@mail.wwpdb.org](mailto:validation@mail.wwpdb.org)

A user guide is available at

<https://www.wwpdb.org/validation/2017/XrayValidationReportHelp>

with specific help available everywhere you see the ⓘ symbol.

The types of validation reports are described at

<http://www.wwpdb.org/validation/2017/FAQs#types>.

---

The following versions of software and data (see [references ⓘ](#)) were used in the production of this report:

MolProbity : 4.02b-467  
Mogul : 1.8.5 (274361), CSD as541be (2020)  
Xtriage (Phenix) : 1.13  
EDS : 2.35.1  
buster-report : 1.1.7 (2018)  
Percentile statistics : 20191225.v01 (using entries in the PDB archive December 25th 2019)  
Refmac : 5.8.0158  
CCP4 : 7.0.044 (Gargrove)  
Ideal geometry (proteins) : Engh & Huber (2001)  
Ideal geometry (DNA, RNA) : Parkinson et al. (1996)  
Validation Pipeline (wwPDB-VP) : 2.35.1

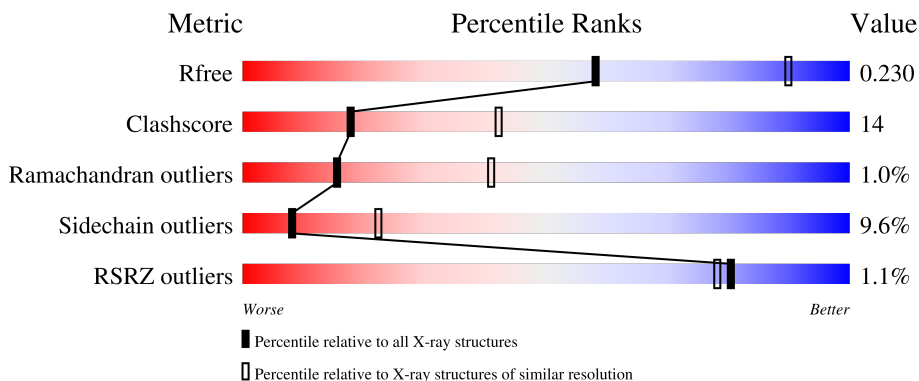
# 1 Overall quality at a glance

The following experimental techniques were used to determine the structure:

*X-RAY DIFFRACTION*

The reported resolution of this entry is 2.77 Å.

Percentile scores (ranging between 0-100) for global validation metrics of the entry are shown in the following graphic. The table shows the number of entries on which the scores are based.



Metric	Whole archive (#Entries)	Similar resolution (#Entries, resolution range(Å))
$R_{free}$	130704	4107 (2.80-2.76)
Clashscore	141614	4575 (2.80-2.76)
Ramachandran outliers	138981	4487 (2.80-2.76)
Sidechain outliers	138945	4489 (2.80-2.76)
RSRZ outliers	127900	4027 (2.80-2.76)

The table below summarises the geometric issues observed across the polymeric chains and their fit to the electron density. The red, orange, yellow and green segments of the lower bar indicate the fraction of residues that contain outliers for  $\geq 3$ , 2, 1 and 0 types of geometric quality criteria respectively. A grey segment represents the fraction of residues that are not modelled. The numeric value for each fraction is indicated below the corresponding segment, with a dot representing fractions  $\leq 5\%$ . The upper red bar (where present) indicates the fraction of residues that have poor fit to the electron density. The numeric value is given above the bar.

Mol	Chain	Length	Quality of chain
1	L	281	 68% 26% 5%
2	M	313	 72% 19% 5% . .
3	H	260	 71% 15% 6% 8%

The following table lists non-polymeric compounds, carbohydrate monomers and non-standard residues in protein, DNA, RNA chains that are outliers for geometric or electron-density-fit criteria:

Mol	Type	Chain	Res	Chirality	Geometry	Clashes	Electron density
5	BPH	L	303	X	-	-	-

## 2 Entry composition [i](#)

There are 9 unique types of molecules in this entry. The entry contains 6916 atoms, of which 0 are hydrogens and 0 are deuteriums.

In the tables below, the ZeroOcc column contains the number of atoms modelled with zero occupancy, the AltConf column contains the number of residues with at least one atom in alternate conformation and the Trace column contains the number of residues modelled with at most 2 atoms.

- Molecule 1 is a protein called Reaction center protein L chain.

Mol	Chain	Residues	Atoms					ZeroOcc	AltConf	Trace
			Total	C	N	O	S			
1	L	280	2195	1484	347	356	8	0	0	0

- Molecule 2 is a protein called Reaction center protein M chain.

Mol	Chain	Residues	Atoms					ZeroOcc	AltConf	Trace
			Total	C	N	O	S			
2	M	301	2375	1586	390	389	10	0	0	0

There are 12 discrepancies between the modelled and reference sequences:

Chain	Residue	Modelled	Actual	Comment	Reference
M	265	SER	ILE	engineered mutation	UNP P0C0Y9
M	303	MET	-	expression tag	UNP P0C0Y9
M	304	ALA	-	expression tag	UNP P0C0Y9
M	305	PRO	-	expression tag	UNP P0C0Y9
M	306	LEU	-	expression tag	UNP P0C0Y9
M	307	ASN	-	expression tag	UNP P0C0Y9
M	308	HIS	-	expression tag	UNP P0C0Y9
M	309	HIS	-	expression tag	UNP P0C0Y9
M	310	HIS	-	expression tag	UNP P0C0Y9
M	311	HIS	-	expression tag	UNP P0C0Y9
M	312	HIS	-	expression tag	UNP P0C0Y9
M	313	HIS	-	expression tag	UNP P0C0Y9

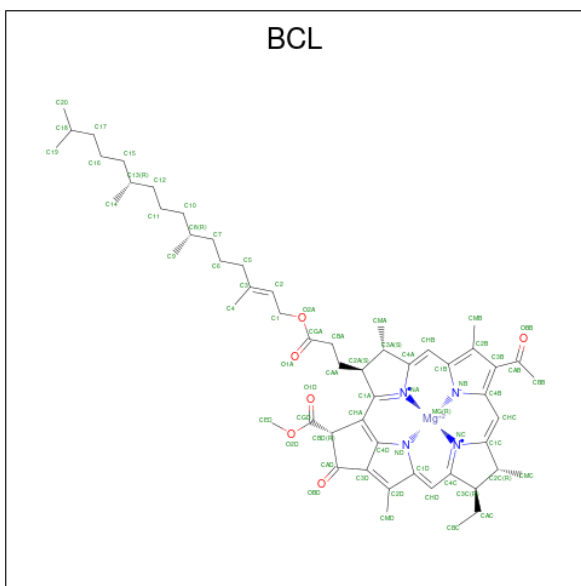
- Molecule 3 is a protein called Reaction center protein H chain.

Mol	Chain	Residues	Atoms					ZeroOcc	AltConf	Trace
			Total	C	N	O	S			
3	H	238	1786	1143	303	331	9	0	0	0

There are 20 discrepancies between the modelled and reference sequences:

Chain	Residue	Modelled	Actual	Comment	Reference
H	1	MET	-	expression tag	UNP P0C0Y7
H	2	VAL	-	expression tag	UNP P0C0Y7
H	3	GLY	-	expression tag	UNP P0C0Y7
H	4	VAL	-	expression tag	UNP P0C0Y7
H	5	THR	-	expression tag	UNP P0C0Y7
H	6	ALA	-	expression tag	UNP P0C0Y7
H	7	PHE	-	expression tag	UNP P0C0Y7
H	8	GLY	-	expression tag	UNP P0C0Y7
H	9	ASN	-	expression tag	UNP P0C0Y7
H	10	PHE	-	expression tag	UNP P0C0Y7
H	251	VAL	-	expression tag	UNP P0C0Y7
H	252	VAL	-	expression tag	UNP P0C0Y7
H	253	ALA	-	expression tag	UNP P0C0Y7
H	254	ALA	-	expression tag	UNP P0C0Y7
H	255	MET	-	expression tag	UNP P0C0Y7
H	256	LEU	-	expression tag	UNP P0C0Y7
H	257	ALA	-	expression tag	UNP P0C0Y7
H	258	GLU	-	expression tag	UNP P0C0Y7
H	259	TYR	-	expression tag	UNP P0C0Y7
H	260	ALA	-	expression tag	UNP P0C0Y7

- Molecule 4 is BACTERIOCHLOROPHYLL A (three-letter code: BCL) (formula:  $C_{55}H_{74}MgN_4O_6$ ).



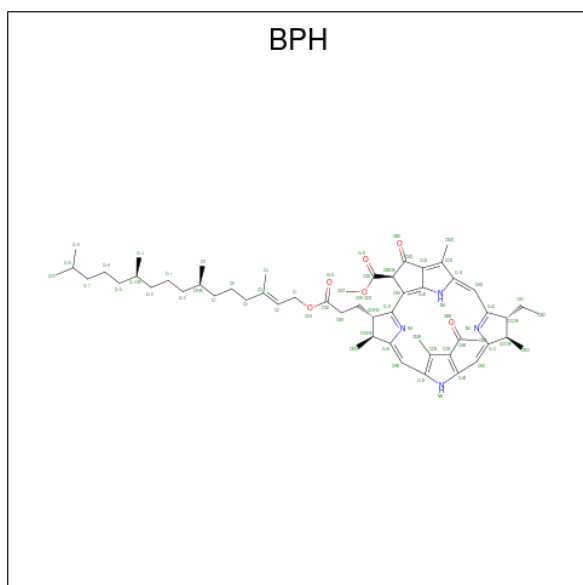
Mol	Chain	Residues	Atoms				ZeroOcc	AltConf	
			Total	C	Mg	N			O
4	L	1	66	55	1	4	6	0	0
4	L	1	66	55	1	4	6	0	0

*Continued on next page...*

Continued from previous page...

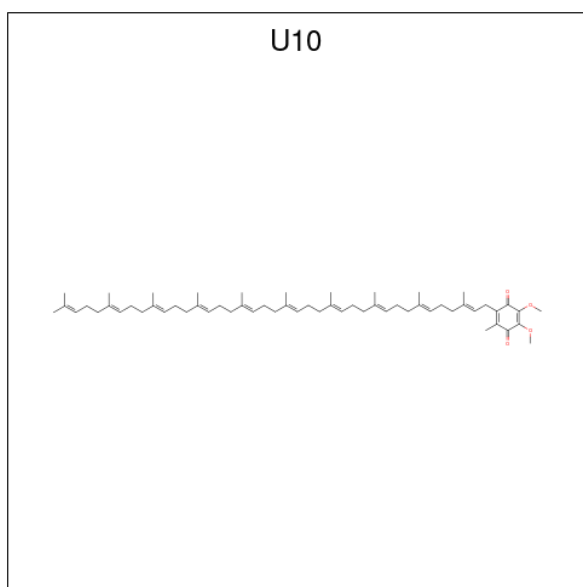
Mol	Chain	Residues	Atoms				ZeroOcc	AltConf	
4	M	1	Total	C	Mg	N	O	0	0
			51	40	1	4	6		
4	M	1	Total	C	Mg	N	O	0	0
			66	55	1	4	6		

- Molecule 5 is BACTERIOPHEOPHYTIN A (three-letter code: BPH) (formula:  $C_{55}H_{76}N_4O_6$ ).



Mol	Chain	Residues	Atoms				ZeroOcc	AltConf
5	L	1	Total	C	N	O	0	0
			65	55	4	6		
5	M	1	Total	C	N	O	0	0
			50	40	4	6		

- Molecule 6 is UBIQUINONE-10 (three-letter code: U10) (formula:  $C_{59}H_{90}O_4$ ).

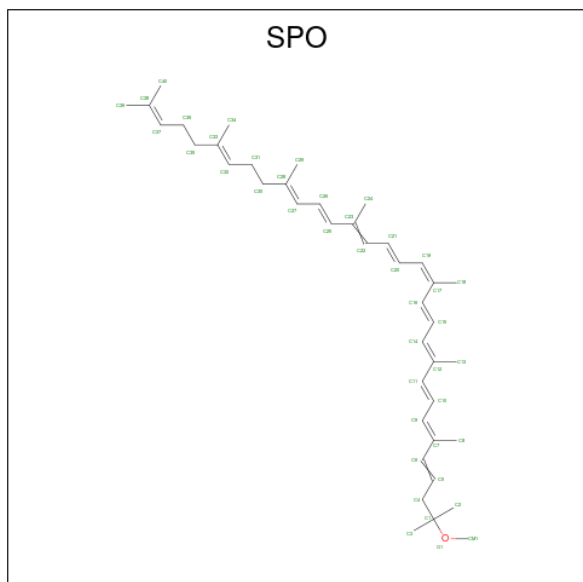


Mol	Chain	Residues	Atoms		ZeroOcc	AltConf
6	L	1	Total	C O	0	0
			16	12 4		
6	M	1	Total	C O	0	0
			48	44 4		

- Molecule 7 is FE (III) ION (three-letter code: FE) (formula: Fe).

Mol	Chain	Residues	Atoms		ZeroOcc	AltConf
7	M	1	Total	Fe	0	0
			1	1		

- Molecule 8 is SPHEROIDENE (three-letter code: SPO) (formula: C<sub>41</sub>H<sub>60</sub>O).



Mol	Chain	Residues	Atoms			ZeroOcc	AltConf
8	M	1	Total	C	O	0	0
			33	32	1		

- Molecule 9 is water.

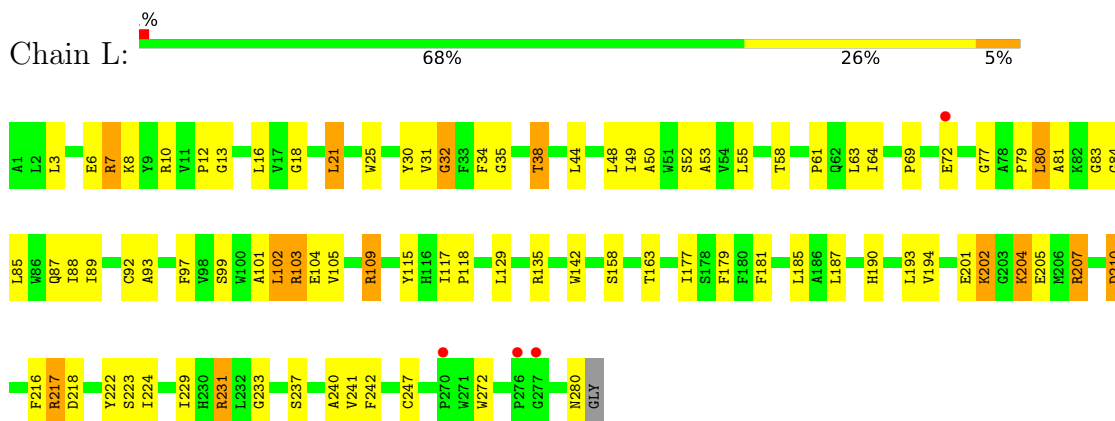
Mol	Chain	Residues	Atoms		ZeroOcc	AltConf
9	L	26	Total	O	0	0
			26	26		
9	M	30	Total	O	0	0
			30	30		
9	H	42	Total	O	0	0
			42	42		



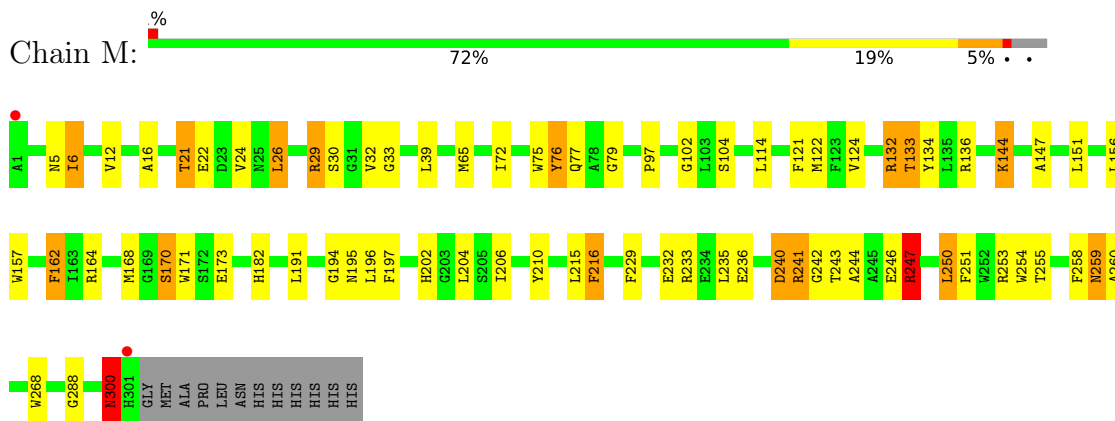
### 3 Residue-property plots i

These plots are drawn for all protein, RNA, DNA and oligosaccharide chains in the entry. The first graphic for a chain summarises the proportions of the various outlier classes displayed in the second graphic. The second graphic shows the sequence view annotated by issues in geometry and electron density. Residues are color-coded according to the number of geometric quality criteria for which they contain at least one outlier: green = 0, yellow = 1, orange = 2 and red = 3 or more. A red dot above a residue indicates a poor fit to the electron density ( $RSRZ > 2$ ). Stretches of 2 or more consecutive residues without any outlier are shown as a green connector. Residues present in the sample, but not in the model, are shown in grey.

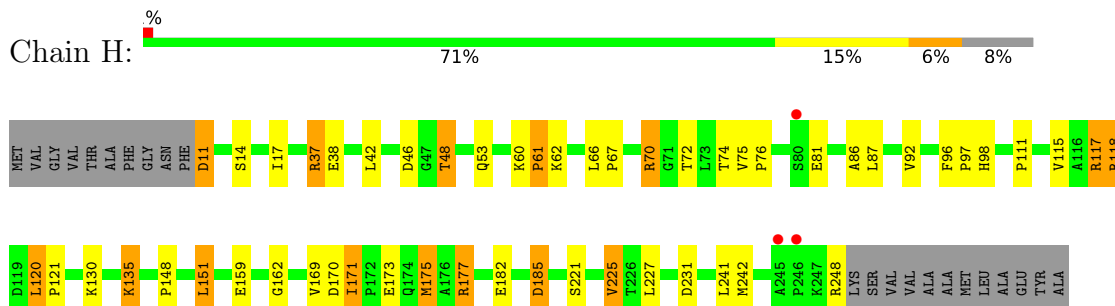
#### ● Molecule 1: Reaction center protein L chain



#### ● Molecule 2: Reaction center protein M chain



#### ● Molecule 3: Reaction center protein H chain



## 4 Data and refinement statistics i

Property	Value	Source
Space group	P 31 2 1	Depositor
Cell constants a, b, c, $\alpha$ , $\beta$ , $\gamma$	140.19Å 140.19Å 184.56Å 90.00° 90.00° 120.00°	Depositor
Resolution (Å)	19.90 – 2.77 19.90 – 2.77	Depositor EDS
% Data completeness (in resolution range)	99.9 (19.90-2.77) 99.9 (19.90-2.77)	Depositor EDS
$R_{merge}$	0.10	Depositor
$R_{sym}$	(Not available)	Depositor
$\langle I/\sigma(I) \rangle$ <sup>1</sup>	2.45 (at 2.79Å)	Xtrriage
Refinement program	REFMAC 5.5.0109, PHENIX	Depositor
R, $R_{free}$	0.191 , 0.227 0.194 , 0.230	Depositor DCC
$R_{free}$ test set	2682 reflections (5.00%)	wwPDB-VP
Wilson B-factor (Å <sup>2</sup> )	56.5	Xtrriage
Anisotropy	0.064	Xtrriage
Bulk solvent $k_{sol}$ (e/Å <sup>3</sup> ), $B_{sol}$ (Å <sup>2</sup> )	0.33 , 44.2	EDS
L-test for twinning <sup>2</sup>	$\langle  L  \rangle = 0.48$ , $\langle L^2 \rangle = 0.31$	Xtrriage
Estimated twinning fraction	0.024 for -h,-k,l	Xtrriage
$F_o, F_c$ correlation	0.94	EDS
Total number of atoms	6916	wwPDB-VP
Average B, all atoms (Å <sup>2</sup> )	50.0	wwPDB-VP

Xtrriage's analysis on translational NCS is as follows: *The largest off-origin peak in the Patterson function is 2.65% of the height of the origin peak. No significant pseudotranslation is detected.*

<sup>1</sup>Intensities estimated from amplitudes.

<sup>2</sup>Theoretical values of  $\langle |L| \rangle$ ,  $\langle L^2 \rangle$  for acentric reflections are 0.5, 0.333 respectively for untwinned datasets, and 0.375, 0.2 for perfectly twinned datasets.

## 5 Model quality [i](#)

### 5.1 Standard geometry [i](#)

Bond lengths and bond angles in the following residue types are not validated in this section: FE, SPO, BCL, U10, BPH

The Z score for a bond length (or angle) is the number of standard deviations the observed value is removed from the expected value. A bond length (or angle) with  $|Z| > 5$  is considered an outlier worth inspection. RMSZ is the root-mean-square of all Z scores of the bond lengths (or angles).

Mol	Chain	Bond lengths		Bond angles	
		RMSZ	# Z  >5	RMSZ	# Z  >5
1	L	1.18	1/2281 (0.0%)	1.10	14/3125 (0.4%)
2	M	1.13	3/2466 (0.1%)	1.07	12/3369 (0.4%)
3	H	1.11	0/1834	1.17	13/2504 (0.5%)
All	All	1.14	4/6581 (0.1%)	1.11	39/8998 (0.4%)

Chiral center outliers are detected by calculating the chiral volume of a chiral center and verifying if the center is modelled as a planar moiety or with the opposite hand. A planarity outlier is detected by checking planarity of atoms in a peptide group, atoms in a mainchain group or atoms of a sidechain that are expected to be planar.

Mol	Chain	#Chirality outliers	#Planarity outliers
1	L	0	1
2	M	0	1
All	All	0	2

All (4) bond length outliers are listed below:

Mol	Chain	Res	Type	Atoms	Z	Observed(Å)	Ideal(Å)
2	M	258	PHE	CE1-CZ	5.79	1.48	1.37
2	M	236	GLU	CG-CD	5.49	1.60	1.51
2	M	162	PHE	CD1-CE1	5.44	1.50	1.39
1	L	242	PHE	CE1-CZ	5.43	1.47	1.37

The worst 5 of 39 bond angle outliers are listed below:

Mol	Chain	Res	Type	Atoms	Z	Observed(°)	Ideal(°)
1	L	217	ARG	NE-CZ-NH1	11.40	126.00	120.30
3	H	177	ARG	NE-CZ-NH2	-10.61	114.99	120.30
3	H	177	ARG	NE-CZ-NH1	10.29	125.45	120.30
1	L	231	ARG	NE-CZ-NH2	-10.10	115.25	120.30

*Continued on next page...*

*Continued from previous page...*

Mol	Chain	Res	Type	Atoms	Z	Observed(°)	Ideal(°)
1	L	103	ARG	NE-CZ-NH2	-9.52	115.54	120.30

There are no chirality outliers.

All (2) planarity outliers are listed below:

Mol	Chain	Res	Type	Group
1	L	32	GLY	Peptide
2	M	300	ASN	Peptide

## 5.2 Too-close contacts [i](#)

In the following table, the Non-H and H(model) columns list the number of non-hydrogen atoms and hydrogen atoms in the chain respectively. The H(added) column lists the number of hydrogen atoms added and optimized by MolProbity. The Clashes column lists the number of clashes within the asymmetric unit, whereas Symm-Clashes lists symmetry-related clashes.

Mol	Chain	Non-H	H(model)	H(added)	Clashes	Symm-Clashes
1	L	2195	0	2125	66	0
2	M	2375	0	2270	64	0
3	H	1786	0	1747	42	0
4	L	132	0	148	11	0
4	M	117	0	115	22	0
5	L	65	0	76	8	0
5	M	50	0	43	5	0
6	L	16	0	12	6	0
6	M	48	0	63	6	0
7	M	1	0	0	0	0
8	M	33	0	43	6	0
9	H	42	0	0	1	0
9	L	26	0	0	1	0
9	M	30	0	0	1	0
All	All	6916	0	6642	183	0

The all-atom clashscore is defined as the number of clashes found per 1000 atoms (including hydrogen atoms). The all-atom clashscore for this structure is 14.

The worst 5 of 183 close contacts within the same asymmetric unit are listed below, sorted by their clash magnitude.

Atom-1	Atom-2	Interatomic distance (Å)	Clash overlap (Å)
2:M:197:PHE:CZ	4:M:403:BCL:HBB2	1.94	1.03

*Continued on next page...*

Continued from previous page...

Atom-1	Atom-2	Interatomic distance (Å)	Clash overlap (Å)
1:L:38:THR:HG22	1:L:99:SER:CB	1.89	1.02
1:L:49:ILE:HG13	1:L:89:ILE:HD13	1.41	1.02
1:L:38:THR:HG22	1:L:99:SER:HB2	1.06	1.02
2:M:197:PHE:HZ	4:M:403:BCL:HBB2	1.24	1.02

There are no symmetry-related clashes.

## 5.3 Torsion angles [i](#)

### 5.3.1 Protein backbone [i](#)

In the following table, the Percentiles column shows the percent Ramachandran outliers of the chain as a percentile score with respect to all X-ray entries followed by that with respect to entries of similar resolution.

The Analysed column shows the number of residues for which the backbone conformation was analysed, and the total number of residues.

Mol	Chain	Analysed	Favoured	Allowed	Outliers	Percentiles	
1	L	278/281 (99%)	244 (88%)	32 (12%)	2 (1%)	22	50
2	M	299/313 (96%)	276 (92%)	21 (7%)	2 (1%)	22	50
3	H	236/260 (91%)	220 (93%)	12 (5%)	4 (2%)	9	27
All	All	813/854 (95%)	740 (91%)	65 (8%)	8 (1%)	15	41

5 of 8 Ramachandran outliers are listed below:

Mol	Chain	Res	Type
1	L	202	LYS
2	M	77	GLN
1	L	80	LEU
2	M	30	SER
3	H	61	PRO

### 5.3.2 Protein sidechains [i](#)

In the following table, the Percentiles column shows the percent sidechain outliers of the chain as a percentile score with respect to all X-ray entries followed by that with respect to entries of similar resolution.

The Analysed column shows the number of residues for which the sidechain conformation was

analysed, and the total number of residues.

Mol	Chain	Analysed	Rotameric	Outliers	Percentiles	
1	L	213/220 (97%)	192 (90%)	21 (10%)	8	21
2	M	228/246 (93%)	204 (90%)	24 (10%)	7	18
3	H	184/208 (88%)	169 (92%)	15 (8%)	11	30
All	All	625/674 (93%)	565 (90%)	60 (10%)	8	22

5 of 60 residues with a non-rotameric sidechain are listed below:

Mol	Chain	Res	Type
2	M	122	MET
3	H	171	ILE
2	M	191	LEU
3	H	159	GLU
3	H	231	ASP

Sometimes sidechains can be flipped to improve hydrogen bonding and reduce clashes. All (1) such sidechains are listed below:

Mol	Chain	Res	Type
3	H	98	HIS

### 5.3.3 RNA [i](#)

There are no RNA molecules in this entry.

## 5.4 Non-standard residues in protein, DNA, RNA chains [i](#)

There are no non-standard protein/DNA/RNA residues in this entry.

## 5.5 Carbohydrates [i](#)

There are no monosaccharides in this entry.

## 5.6 Ligand geometry [i](#)

Of 10 ligands modelled in this entry, 1 is monoatomic - leaving 9 for Mogul analysis.

In the following table, the Counts columns list the number of bonds (or angles) for which Mogul statistics could be retrieved, the number of bonds (or angles) that are observed in the model and

the number of bonds (or angles) that are defined in the Chemical Component Dictionary. The Link column lists molecule types, if any, to which the group is linked. The Z score for a bond length (or angle) is the number of standard deviations the observed value is removed from the expected value. A bond length (or angle) with  $|Z| > 2$  is considered an outlier worth inspection. RMSZ is the root-mean-square of all Z scores of the bond lengths (or angles).

Mol	Type	Chain	Res	Link	Bond lengths			Bond angles		
					Counts	RMSZ	# Z  > 2	Counts	RMSZ	# Z  > 2
6	U10	L	304	-	16,16,63	1.92	6 (37%)	19,22,79	3.16	9 (47%)
5	BPH	L	303	-	51,70,70	0.90	1 (1%)	52,101,101	1.73	9 (17%)
5	BPH	M	404	-	36,55,70	1.40	5 (13%)	34,83,101	2.54	15 (44%)
4	BCL	M	401	-	43,59,74	2.05	3 (6%)	51,97,115	2.50	15 (29%)
4	BCL	M	403	-	58,74,74	1.43	3 (5%)	69,115,115	1.86	18 (26%)
8	SPO	M	406	-	31,32,41	1.65	4 (12%)	35,39,50	2.62	12 (34%)
4	BCL	L	301	-	58,74,74	1.64	3 (5%)	69,115,115	1.65	13 (18%)
6	U10	M	405	-	48,48,63	2.98	12 (25%)	58,61,79	1.80	11 (18%)
4	BCL	L	302	-	58,74,74	1.58	5 (8%)	69,115,115	1.98	15 (21%)

In the following table, the Chirals column lists the number of chiral outliers, the number of chiral centers analysed, the number of these observed in the model and the number defined in the Chemical Component Dictionary. Similar counts are reported in the Torsion and Rings columns. '-' means no outliers of that kind were identified.

Mol	Type	Chain	Res	Link	Chirals	Torsions	Rings
6	U10	L	304	-	-	5/7/31/87	0/1/1/1
5	BPH	L	303	-	2/2/18/22	11/37/105/105	0/5/6/6
5	BPH	M	404	-	-	4/19/87/105	0/5/6/6
4	BCL	M	401	-	-	2/19/119/137	-
4	BCL	M	403	-	-	5/37/137/137	-
8	SPO	M	406	-	-	13/37/37/47	-
4	BCL	L	301	-	-	3/37/137/137	-
6	U10	M	405	-	-	15/45/69/87	0/1/1/1
4	BCL	L	302	-	-	4/37/137/137	-

The worst 5 of 42 bond length outliers are listed below:

Mol	Chain	Res	Type	Atoms	Z	Observed(Å)	Ideal(Å)
4	M	401	BCL	C1B-NB	10.37	1.44	1.35
4	L	301	BCL	C4B-NB	9.02	1.43	1.35
4	L	302	BCL	C1B-NB	7.97	1.42	1.35

Continued on next page...

Continued from previous page...

Mol	Chain	Res	Type	Atoms	Z	Observed(Å)	Ideal(Å)
6	M	405	U10	C13-C14	7.95	1.52	1.33
6	M	405	U10	C33-C34	7.62	1.51	1.33

The worst 5 of 117 bond angle outliers are listed below:

Mol	Chain	Res	Type	Atoms	Z	Observed(°)	Ideal(°)
4	M	401	BCL	C1-C2-C3	9.63	142.34	126.75
8	M	406	SPO	C16-C17-C19	8.17	131.48	118.94
6	L	304	U10	C7-C6-C5	7.40	127.39	118.48
8	M	406	SPO	C18-C17-C19	-7.19	112.85	122.92
5	L	303	BPH	C6-C5-C3	6.87	131.48	113.45

All (2) chirality outliers are listed below:

Mol	Chain	Res	Type	Atom
5	L	303	BPH	C13
5	L	303	BPH	C8

5 of 62 torsion outliers are listed below:

Mol	Chain	Res	Type	Atoms
4	M	401	BCL	O2A-C1-C2-C3
5	L	303	BPH	O2A-C1-C2-C3
6	L	304	U10	C1-C6-C7-C8
6	M	405	U10	C24-C26-C27-C28
6	M	405	U10	C27-C28-C29-C30

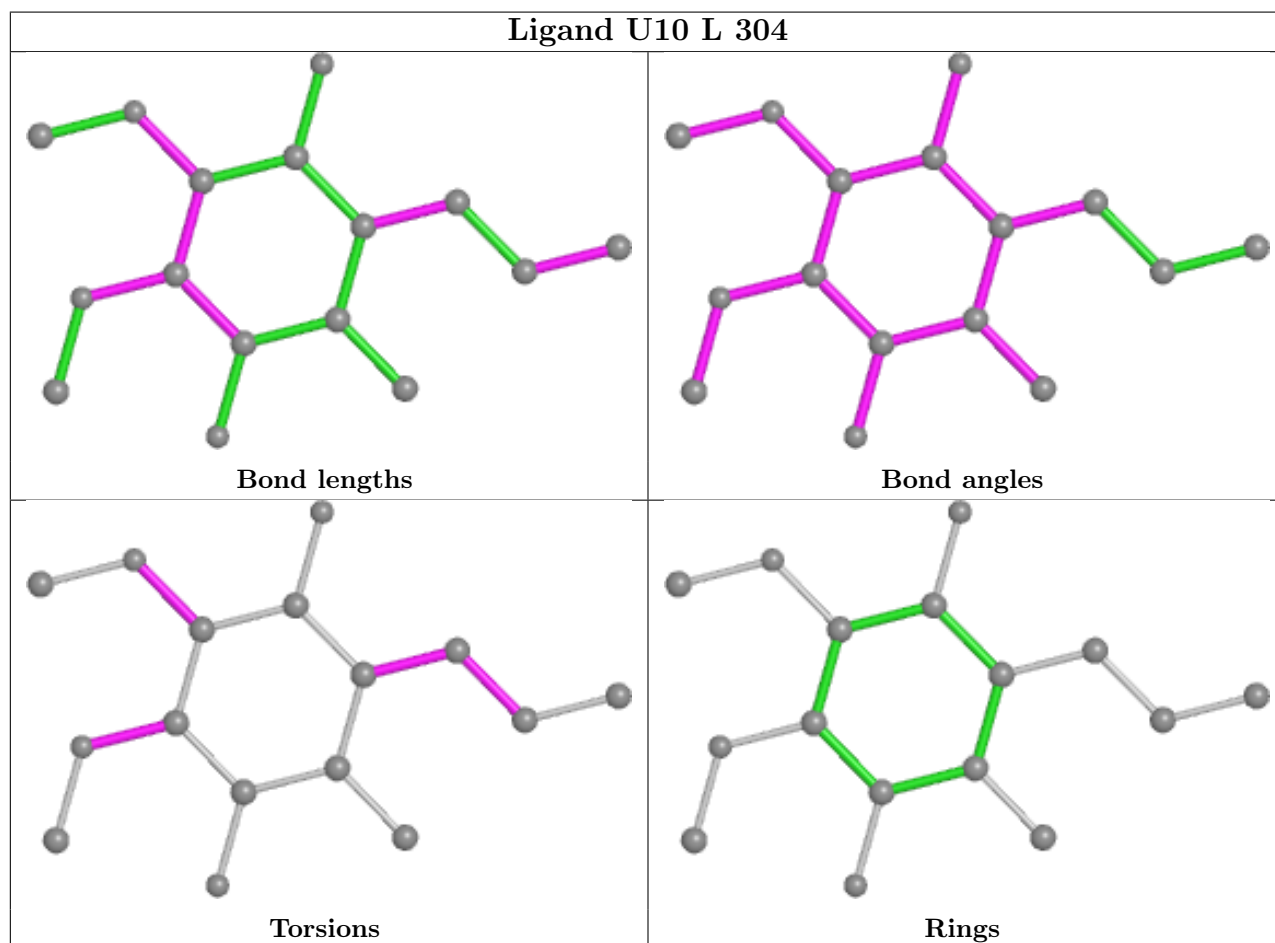
There are no ring outliers.

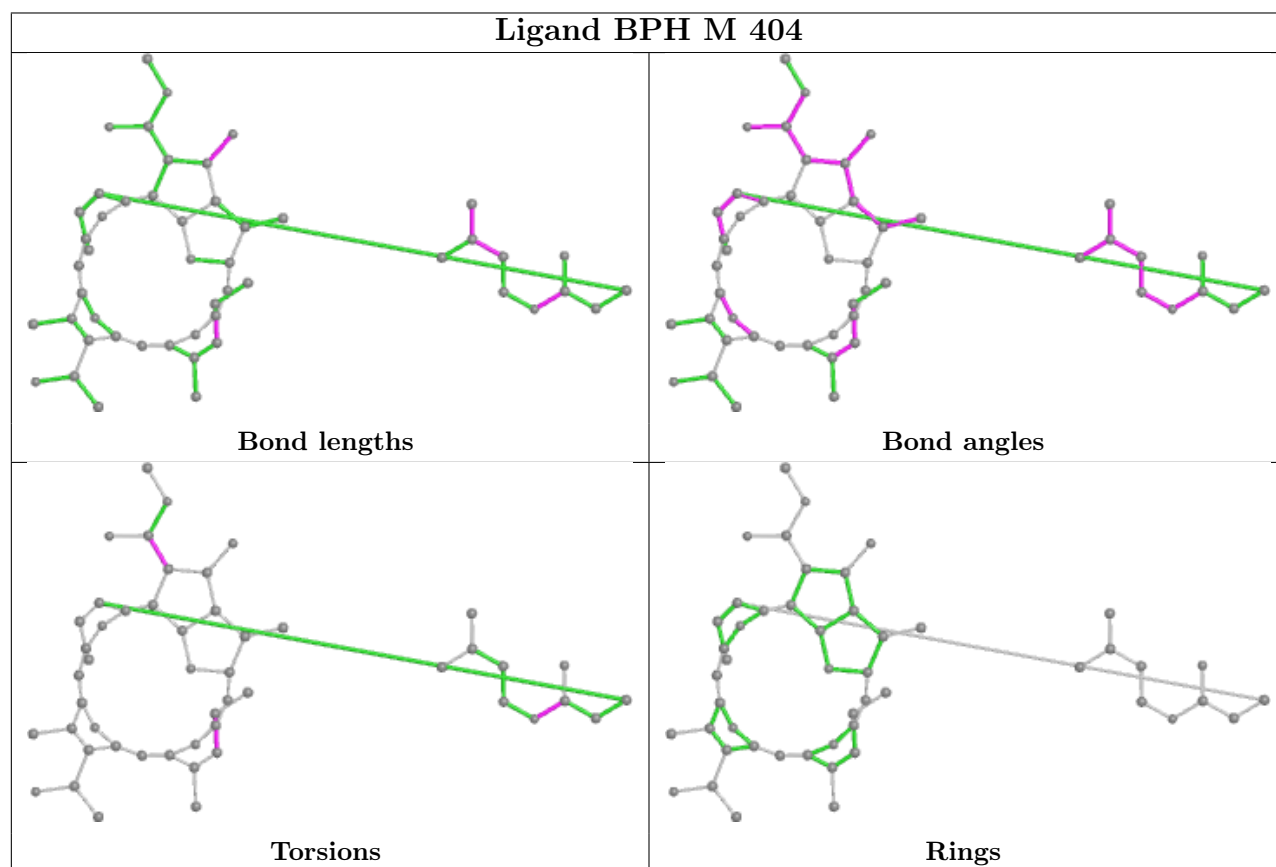
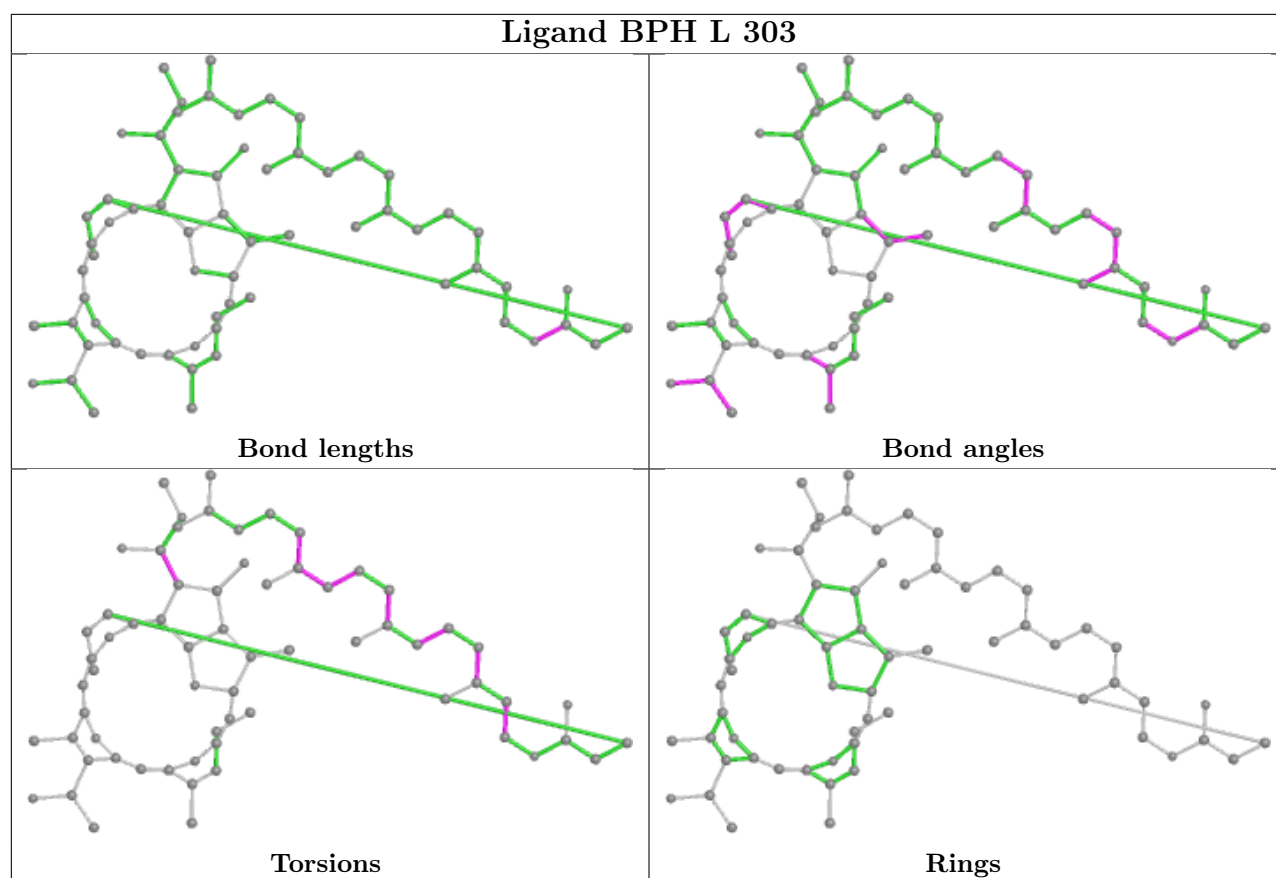
9 monomers are involved in 56 short contacts:

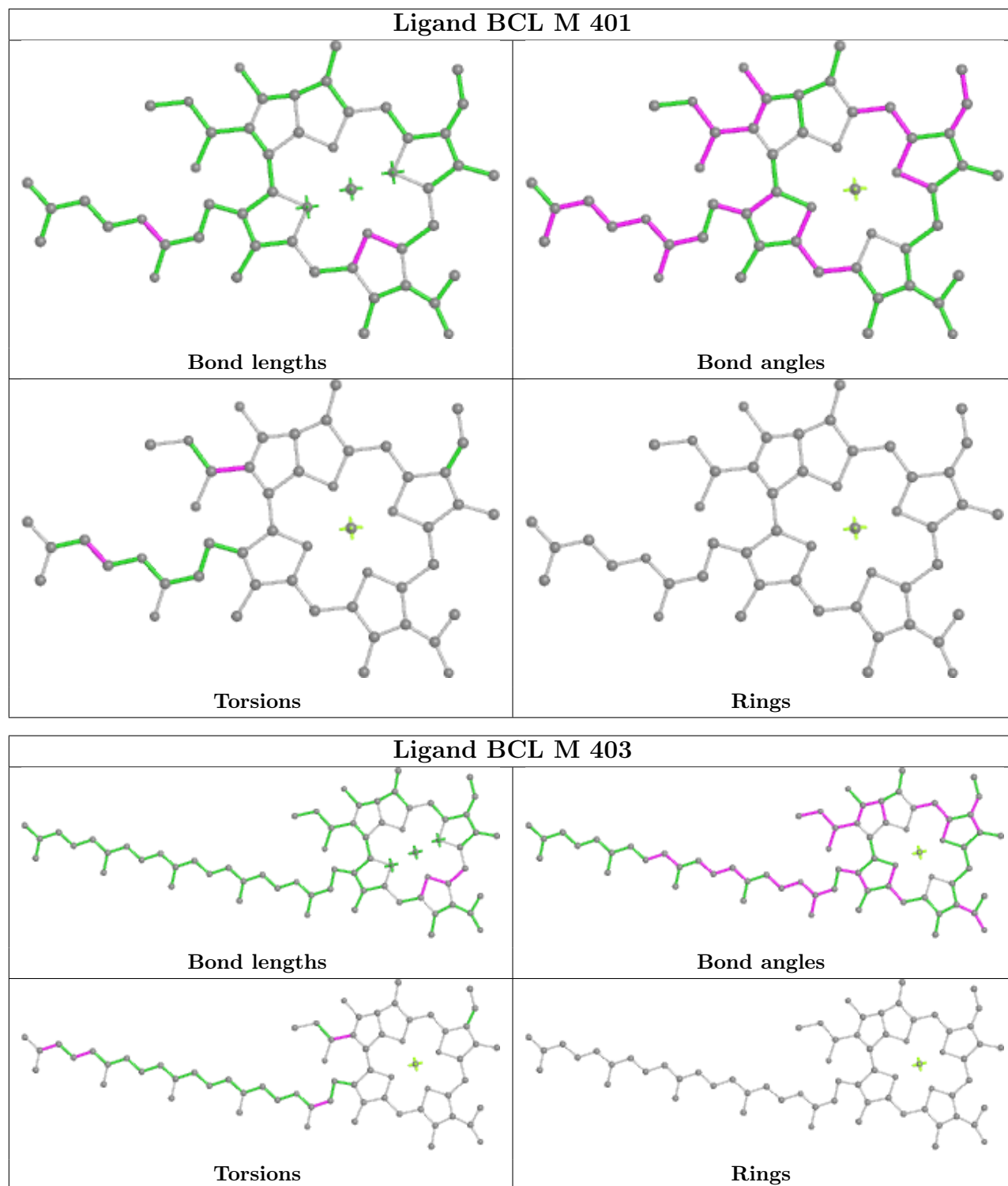
Mol	Chain	Res	Type	Clashes	Symm-Clashes
6	L	304	U10	6	0
5	L	303	BPH	8	0
5	M	404	BPH	5	0
4	M	401	BCL	7	0
4	M	403	BCL	16	0
8	M	406	SPO	6	0
4	L	301	BCL	7	0
6	M	405	U10	6	0
4	L	302	BCL	5	0

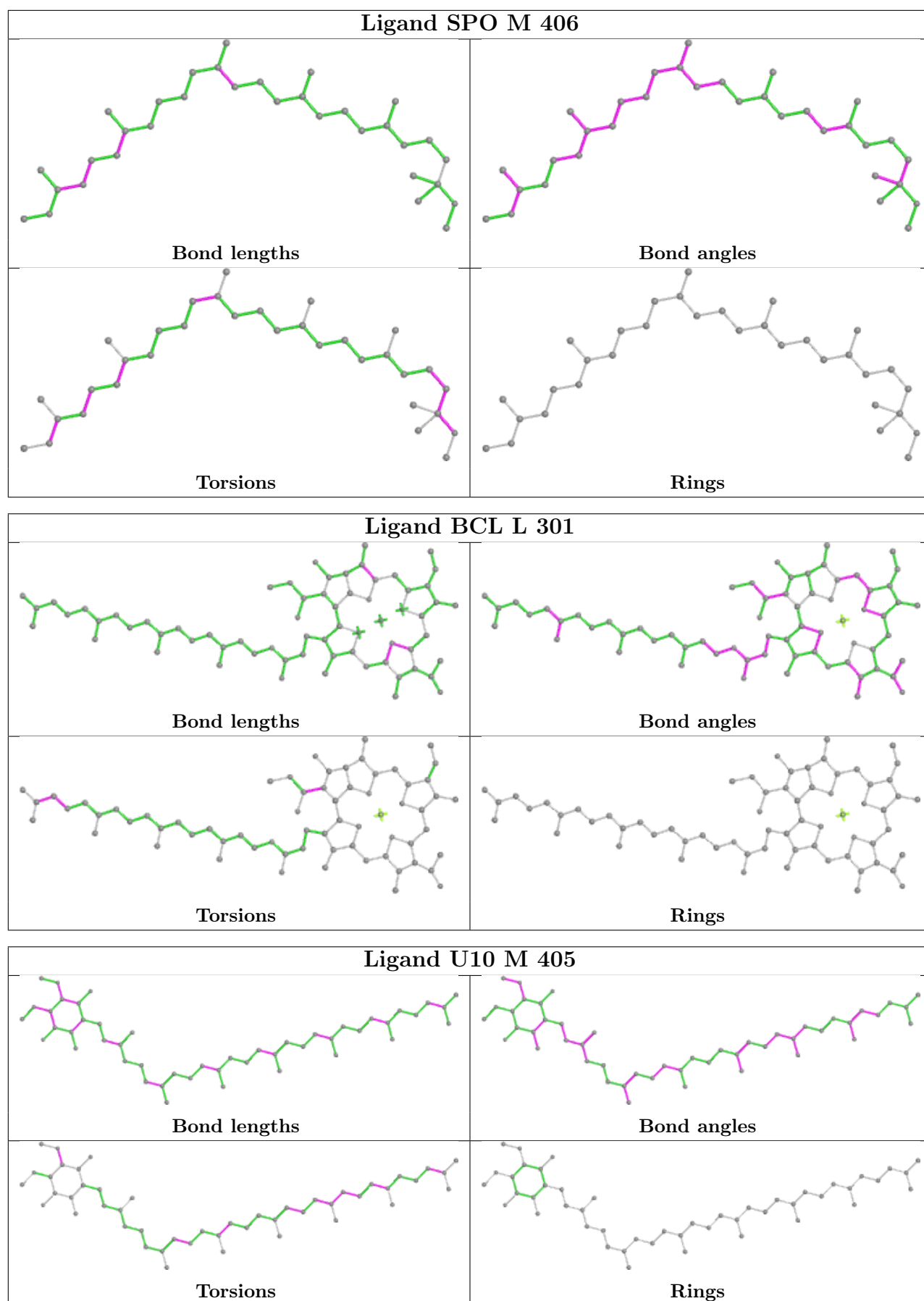


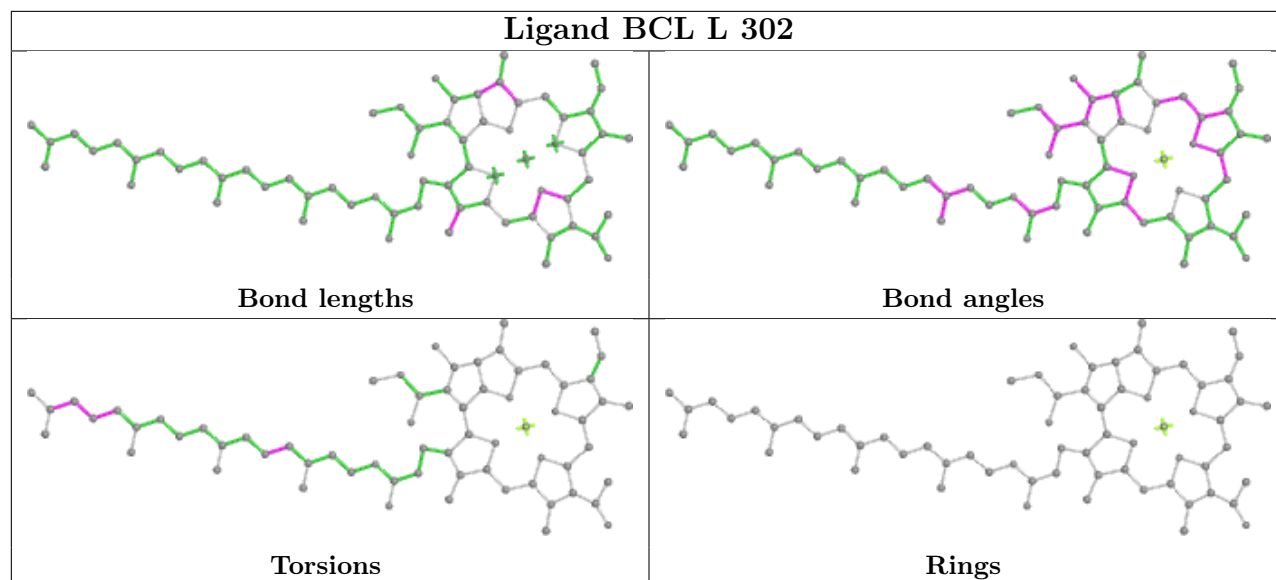
The following is a two-dimensional graphical depiction of Mogul quality analysis of bond lengths, bond angles, torsion angles, and ring geometry for all instances of the Ligand of Interest. In addition, ligands with molecular weight > 250 and outliers as shown on the validation Tables will also be included. For torsion angles, if less than 5% of the Mogul distribution of torsion angles is within 10 degrees of the torsion angle in question, then that torsion angle is considered an outlier. Any bond that is central to one or more torsion angles identified as an outlier by Mogul will be highlighted in the graph. For rings, the root-mean-square deviation (RMSD) between the ring in question and similar rings identified by Mogul is calculated over all ring torsion angles. If the average RMSD is greater than 60 degrees and the minimal RMSD between the ring in question and any Mogul-identified rings is also greater than 60 degrees, then that ring is considered an outlier. The outliers are highlighted in purple. The color gray indicates Mogul did not find sufficient equivalents in the CSD to analyse the geometry.











## 5.7 Other polymers [i](#)

There are no such residues in this entry.

## 5.8 Polymer linkage issues [i](#)

There are no chain breaks in this entry.

## 6 Fit of model and data [i](#)

### 6.1 Protein, DNA and RNA chains [i](#)

In the following table, the column labelled ‘#RSRZ> 2’ contains the number (and percentage) of RSRZ outliers, followed by percent RSRZ outliers for the chain as percentile scores relative to all X-ray entries and entries of similar resolution. The OWAB column contains the minimum, median, 95<sup>th</sup> percentile and maximum values of the occupancy-weighted average B-factor per residue. The column labelled ‘Q< 0.9’ lists the number of (and percentage) of residues with an average occupancy less than 0.9.

Mol	Chain	Analysed	<RSRZ>	#RSRZ>2	OWAB(Å <sup>2</sup> )	Q<0.9
1	L	280/281 (99%)	-0.61	4 (1%) 75 73	33, 47, 84, 90	0
2	M	301/313 (96%)	-0.71	2 (0%) 87 86	33, 47, 77, 86	0
3	H	238/260 (91%)	-0.59	3 (1%) 77 75	35, 47, 62, 77	0
All	All	819/854 (95%)	-0.64	9 (1%) 80 78	33, 47, 77, 90	0

The worst 5 of 9 RSRZ outliers are listed below:

Mol	Chain	Res	Type	RSRZ
2	M	1	ALA	5.6
3	H	246	PRO	3.5
1	L	276	PRO	3.2
1	L	277	GLY	2.8
1	L	72	GLU	2.4

### 6.2 Non-standard residues in protein, DNA, RNA chains [i](#)

There are no non-standard protein/DNA/RNA residues in this entry.

### 6.3 Carbohydrates [i](#)

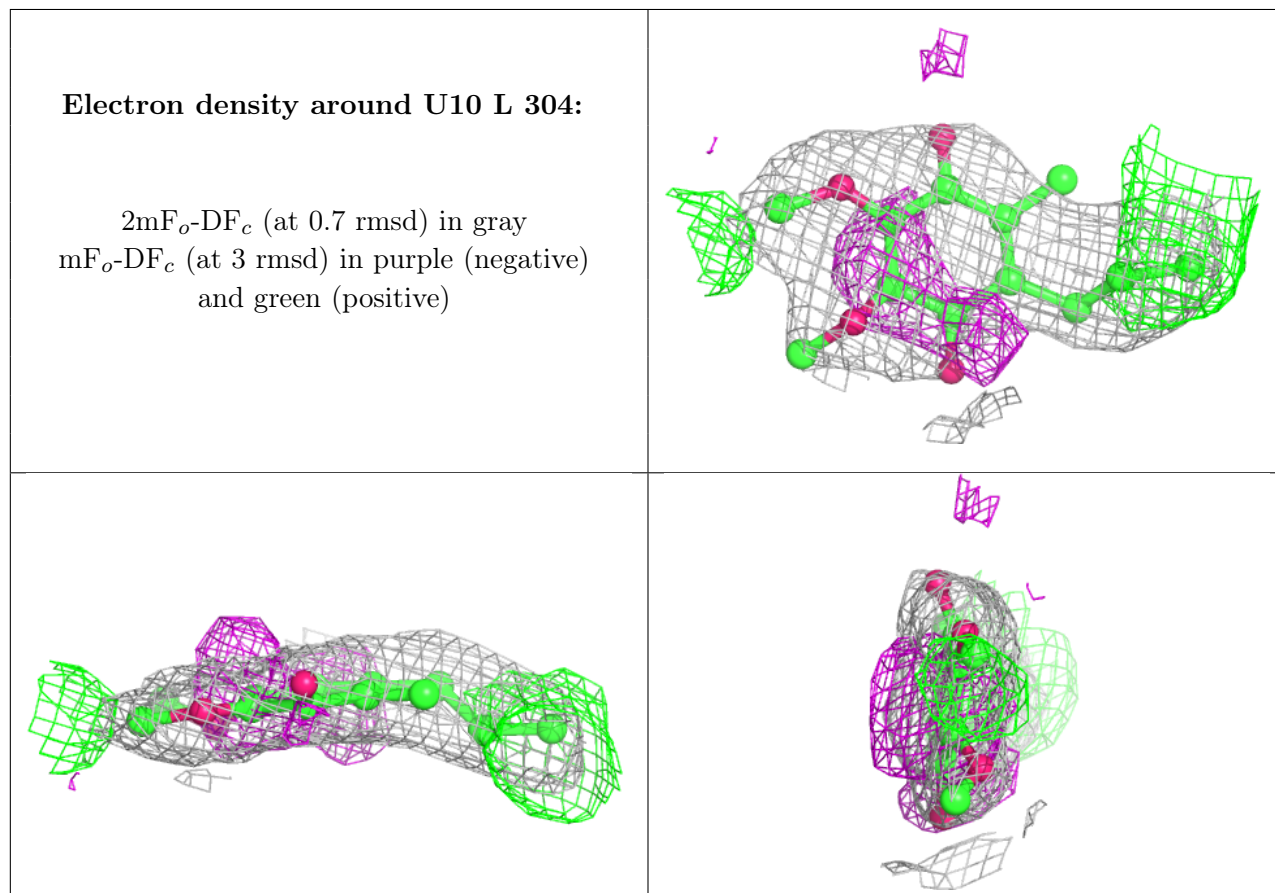
There are no monosaccharides in this entry.

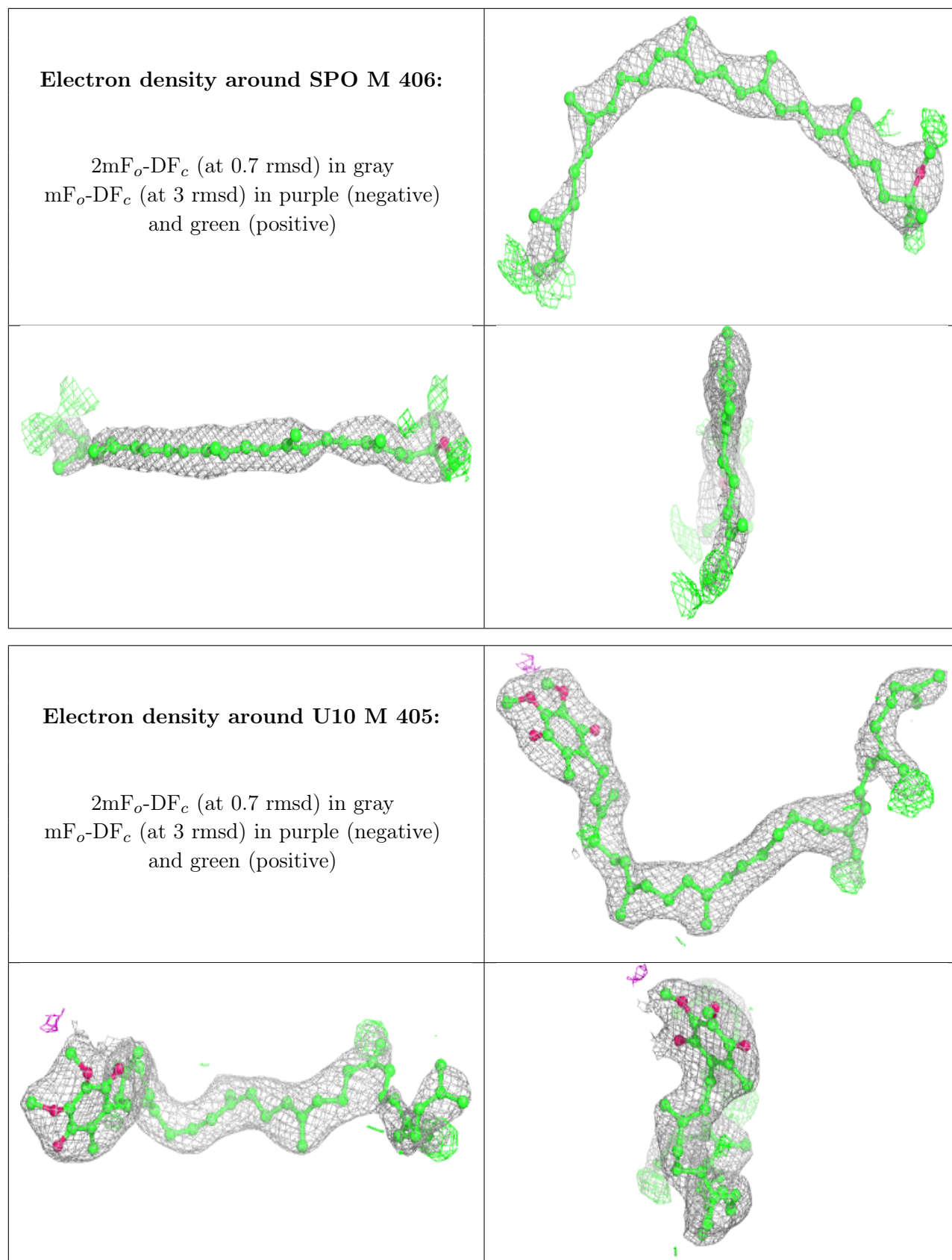
### 6.4 Ligands [i](#)

In the following table, the Atoms column lists the number of modelled atoms in the group and the number defined in the chemical component dictionary. The B-factors column lists the minimum, median, 95<sup>th</sup> percentile and maximum values of B factors of atoms in the group. The column labelled ‘Q< 0.9’ lists the number of atoms with occupancy less than 0.9.

Mol	Type	Chain	Res	Atoms	RSCC	RSR	B-factors( $\text{\AA}^2$ )	Q<0.9
6	U10	L	304	16/63	0.84	0.27	57,71,81,90	0
8	SPO	M	406	33/42	0.91	0.20	54,63,94,95	0
6	U10	M	405	48/63	0.93	0.15	36,46,80,82	0
5	BPH	M	404	50/65	0.96	0.10	35,45,59,68	0
4	BCL	L	301	66/66	0.96	0.16	35,45,51,56	0
4	BCL	M	401	51/66	0.96	0.12	34,40,57,65	0
4	BCL	M	403	66/66	0.96	0.16	34,45,63,69	0
5	BPH	L	303	65/65	0.97	0.12	24,37,47,51	0
4	BCL	L	302	66/66	0.98	0.07	23,33,58,66	0
7	FE	M	402	1/1	0.99	0.08	40,40,40,40	0

The following is a graphical depiction of the model fit to experimental electron density of all instances of the Ligand of Interest. In addition, ligands with molecular weight > 250 and outliers as shown on the geometry validation Tables will also be included. Each fit is shown from different orientation to approximate a three-dimensional view.

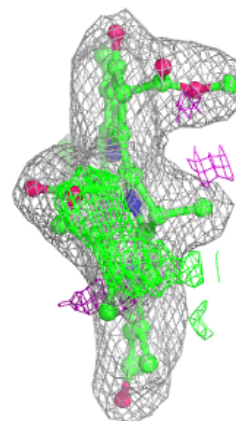
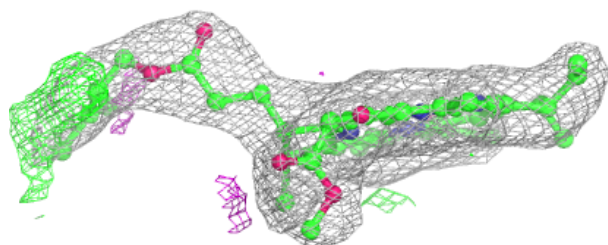
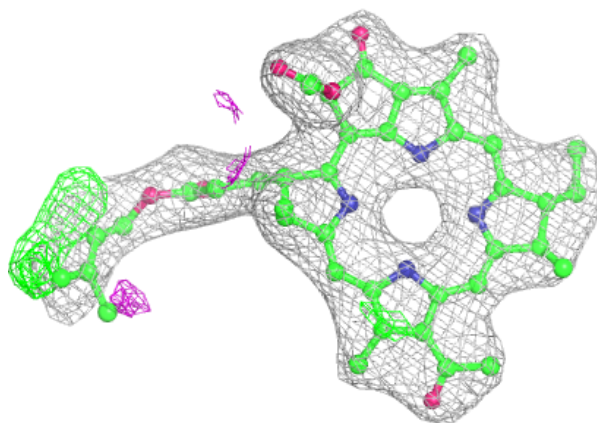




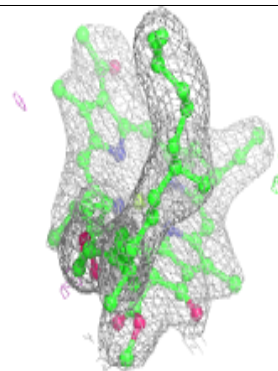
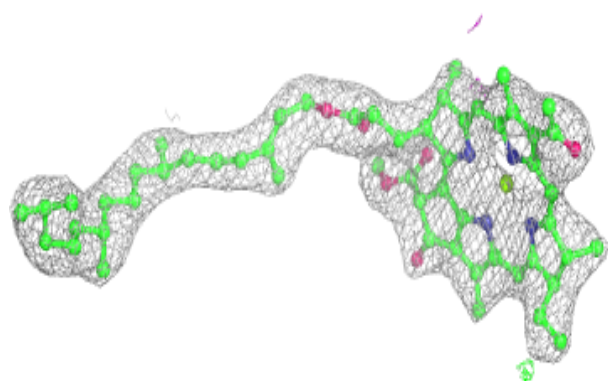
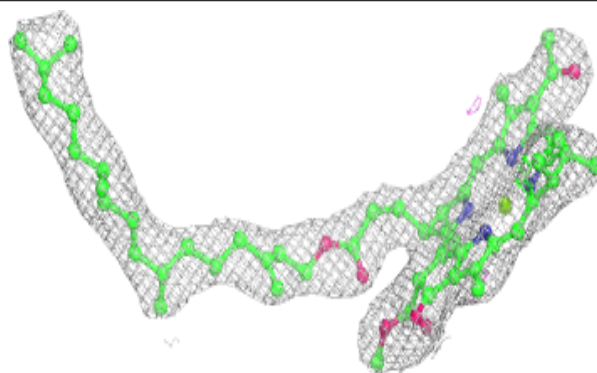


**Electron density around BPH M 404:**

$2mF_o-DF_c$  (at 0.7 rmsd) in gray  
 $mF_o-DF_c$  (at 3 rmsd) in purple (negative)  
and green (positive)

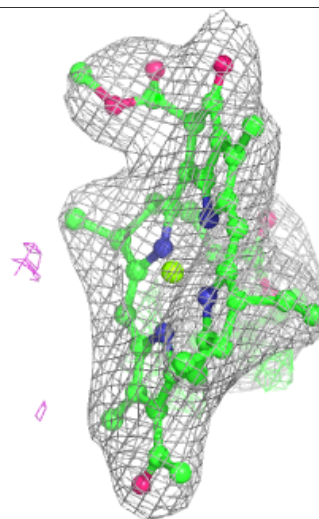
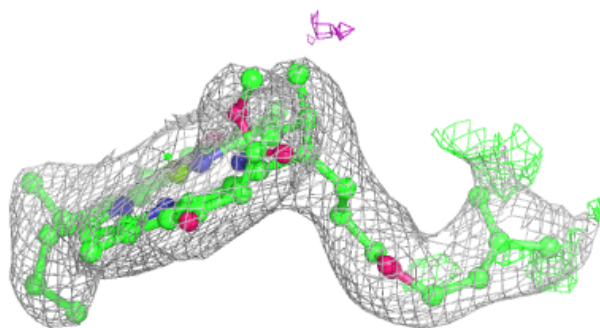
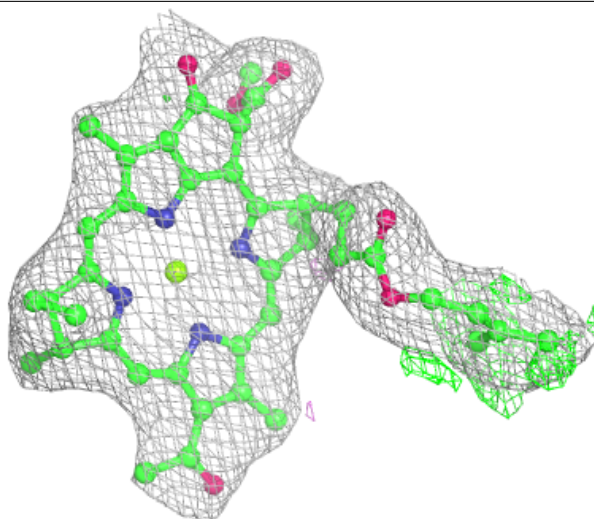
**Electron density around BCL L 301:**

$2mF_o-DF_c$  (at 0.7 rmsd) in gray  
 $mF_o-DF_c$  (at 3 rmsd) in purple (negative)  
and green (positive)



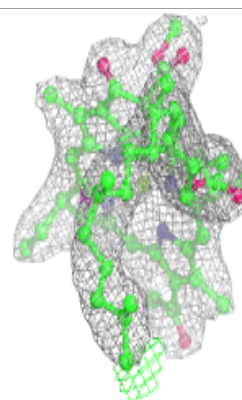
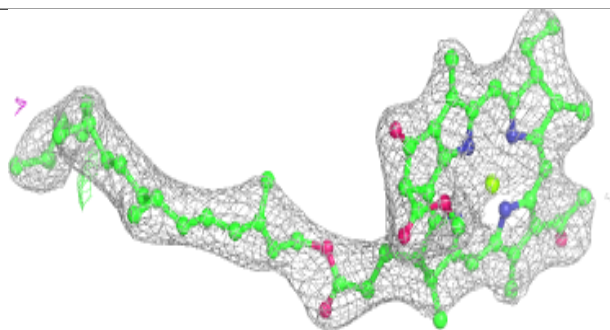
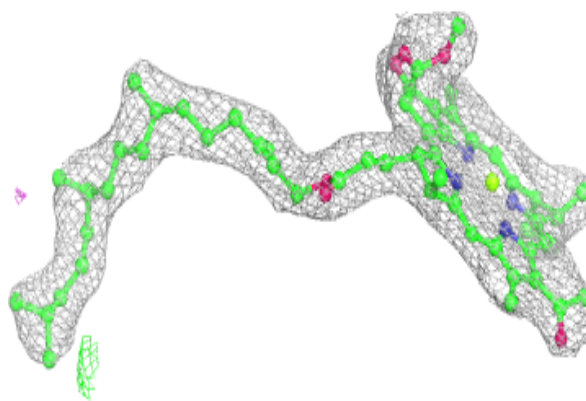
**Electron density around BCL M 401:**

$2mF_o-DF_c$  (at 0.7 rmsd) in gray  
 $mF_o-DF_c$  (at 3 rmsd) in purple (negative)  
and green (positive)

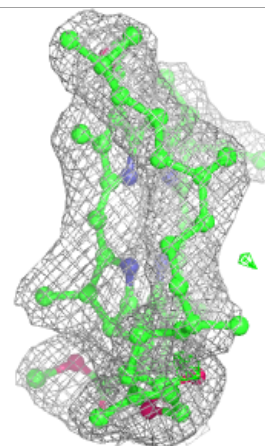
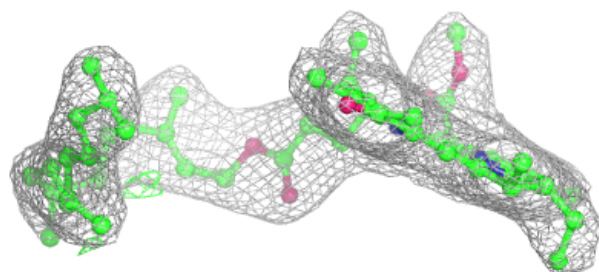
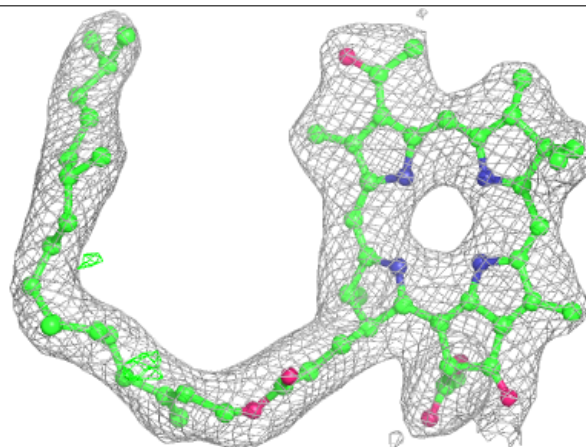


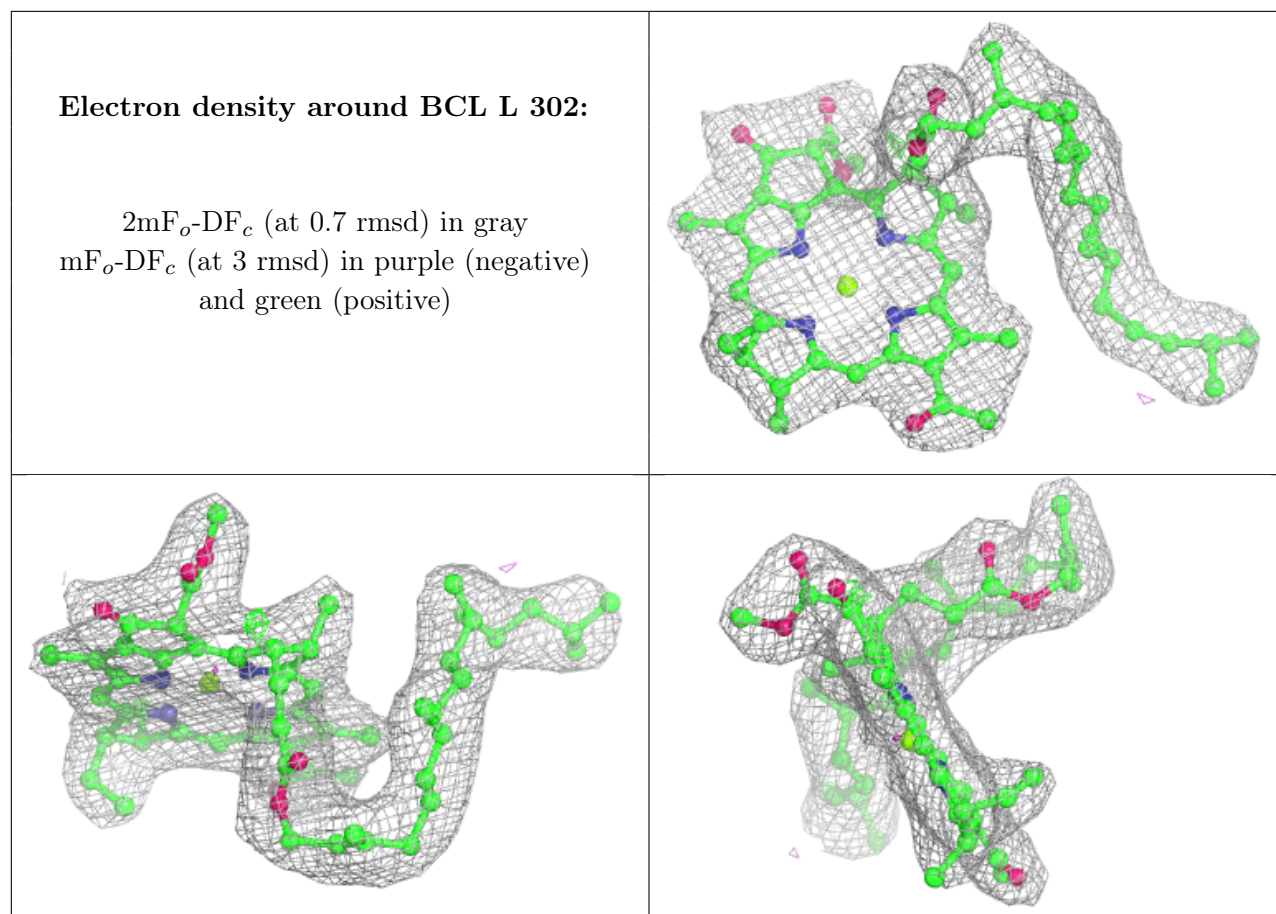
**Electron density around BCL M 403:**

$2mF_o-DF_c$  (at 0.7 rmsd) in gray  
 $mF_o-DF_c$  (at 3 rmsd) in purple (negative)  
and green (positive)

**Electron density around BPH L 303:**

$2mF_o-DF_c$  (at 0.7 rmsd) in gray  
 $mF_o-DF_c$  (at 3 rmsd) in purple (negative)  
and green (positive)





## 6.5 Other polymers [i](#)

There are no such residues in this entry.