



Full wwPDB X-ray Structure Validation Report ⓘ

Jun 7, 2020 – 02:33 am BST

PDB ID : 6HEG
Title : Crystal structure of Escherichia coli DEAH/RHA helicase HrpB
Authors : Xin, B.G.; Chen, W.F.; Rety, S.; Dai, Y.X.; Xi, X.G.
Deposited on : 2018-08-20
Resolution : 3.02 Å(reported)

This is a Full wwPDB X-ray Structure Validation Report for a publicly released PDB entry.

We welcome your comments at validation@mail.wwpdb.org

A user guide is available at

<https://www.wwpdb.org/validation/2017/XrayValidationReportHelp>

with specific help available everywhere you see the ⓘ symbol.

The following versions of software and data (see [references ⓘ](#)) were used in the production of this report:

MolProbity : 4.02b-467
Mogul : 1.8.5 (274361), CSD as541be (2020)
Xtriage (Phenix) : 1.13
EDS : 2.11
buster-report : 1.1.7 (2018)
Percentile statistics : 20191225.v01 (using entries in the PDB archive December 25th 2019)
Refmac : 5.8.0158
CCP4 : 7.0.044 (Gargrove)
Ideal geometry (proteins) : Engh & Huber (2001)
Ideal geometry (DNA, RNA) : Parkinson et al. (1996)
Validation Pipeline (wwPDB-VP) : 2.11

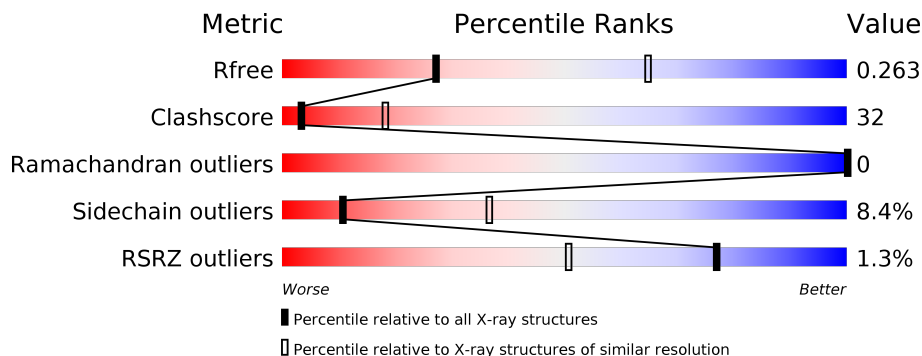
1 Overall quality at a glance

The following experimental techniques were used to determine the structure:

X-RAY DIFFRACTION

The reported resolution of this entry is 3.02 Å.

Percentile scores (ranging between 0-100) for global validation metrics of the entry are shown in the following graphic. The table shows the number of entries on which the scores are based.



Metric	Whole archive (#Entries)	Similar resolution (#Entries, resolution range(Å))
R_{free}	130704	2399 (3.04-3.00)
Clashscore	141614	2734 (3.04-3.00)
Ramachandran outliers	138981	2640 (3.04-3.00)
Sidechain outliers	138945	2643 (3.04-3.00)
RSRZ outliers	127900	2287 (3.04-3.00)

The table below summarises the geometric issues observed across the polymeric chains and their fit to the electron density. The red, orange, yellow and green segments on the lower bar indicate the fraction of residues that contain outliers for ≥ 3 , 2, 1 and 0 types of geometric quality criteria respectively. A grey segment represents the fraction of residues that are not modelled. The numeric value for each fraction is indicated below the corresponding segment, with a dot representing fractions $\leq 5\%$. The upper red bar (where present) indicates the fraction of residues that have poor fit to the electron density. The numeric value is given above the bar.

Mol	Chain	Length	Quality of chain
1	A	809	

The following table lists non-polymeric compounds, carbohydrate monomers and non-standard residues in protein, DNA, RNA chains that are outliers for geometric or electron-density-fit criteria:

Mol	Type	Chain	Res	Chirality	Geometry	Clashes	Electron density
3	ALF	A	902	-	-	X	-
4	PO4	A	905	-	-	X	X

Continued on next page...

Continued from previous page...

Mol	Type	Chain	Res	Chirality	Geometry	Clashes	Electron density
4	PO4	A	906	-	-	X	X

2 Entry composition [i](#)

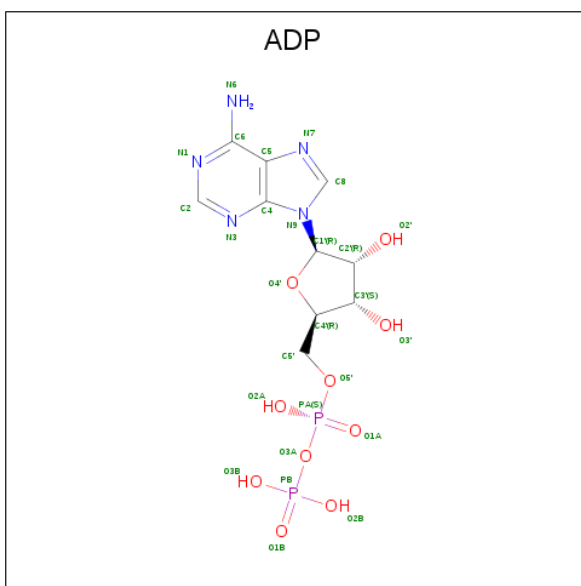
There are 4 unique types of molecules in this entry. The entry contains 6135 atoms, of which 12 are hydrogens and 0 are deuteriums.

In the tables below, the ZeroOcc column contains the number of atoms modelled with zero occupancy, the AltConf column contains the number of residues with at least one atom in alternate conformation and the Trace column contains the number of residues modelled with at most 2 atoms.

- Molecule 1 is a protein called ATP-dependent RNA helicase HrpB.

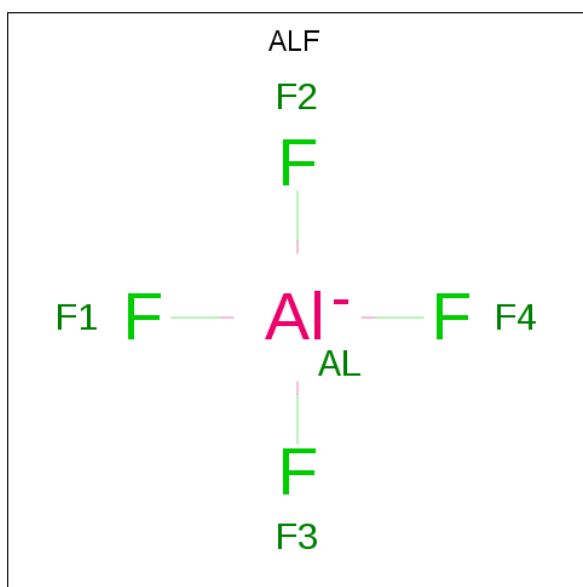
Mol	Chain	Residues	Atoms					ZeroOcc	AltConf	Trace
			Total	C	N	O	S			
1	A	783	6061	3806	1106	1121	28	0	0	0

- Molecule 2 is ADENOSINE-5'-DIPHOSPHATE (three-letter code: ADP) (formula: $C_{10}H_{15}N_5O_{10}P_2$).



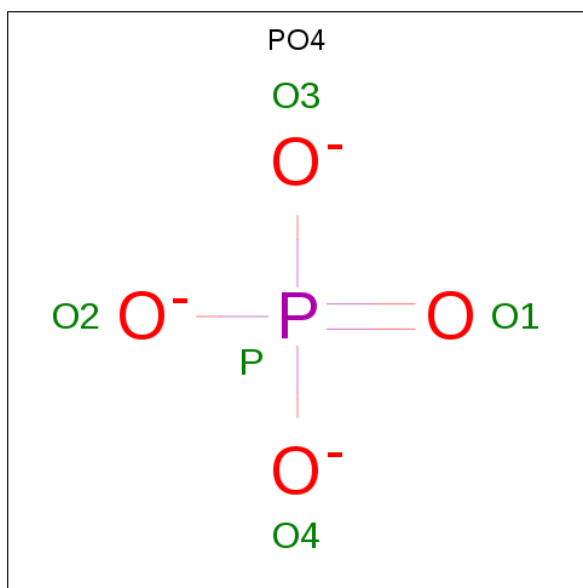
Mol	Chain	Residues	Atoms						ZeroOcc	AltConf
			Total	C	H	N	O	P		
2	A	1	39	10	12	5	10	2	0	0

- Molecule 3 is TETRAFLUOROALUMINATE ION (three-letter code: ALF) (formula: AlF_4).



Mol	Chain	Residues	Atoms			ZeroOcc	AltConf
			Total	Al	F		
3	A	1	5	1	4	0	0

- Molecule 4 is PHOSPHATE ION (three-letter code: PO4) (formula: O₄P).



Mol	Chain	Residues	Atoms			ZeroOcc	AltConf
			Total	O	P		
4	A	1	5	4	1	0	0
4	A	1	5	4	1	0	0
4	A	1	5	4	1	0	0

Continued on next page...

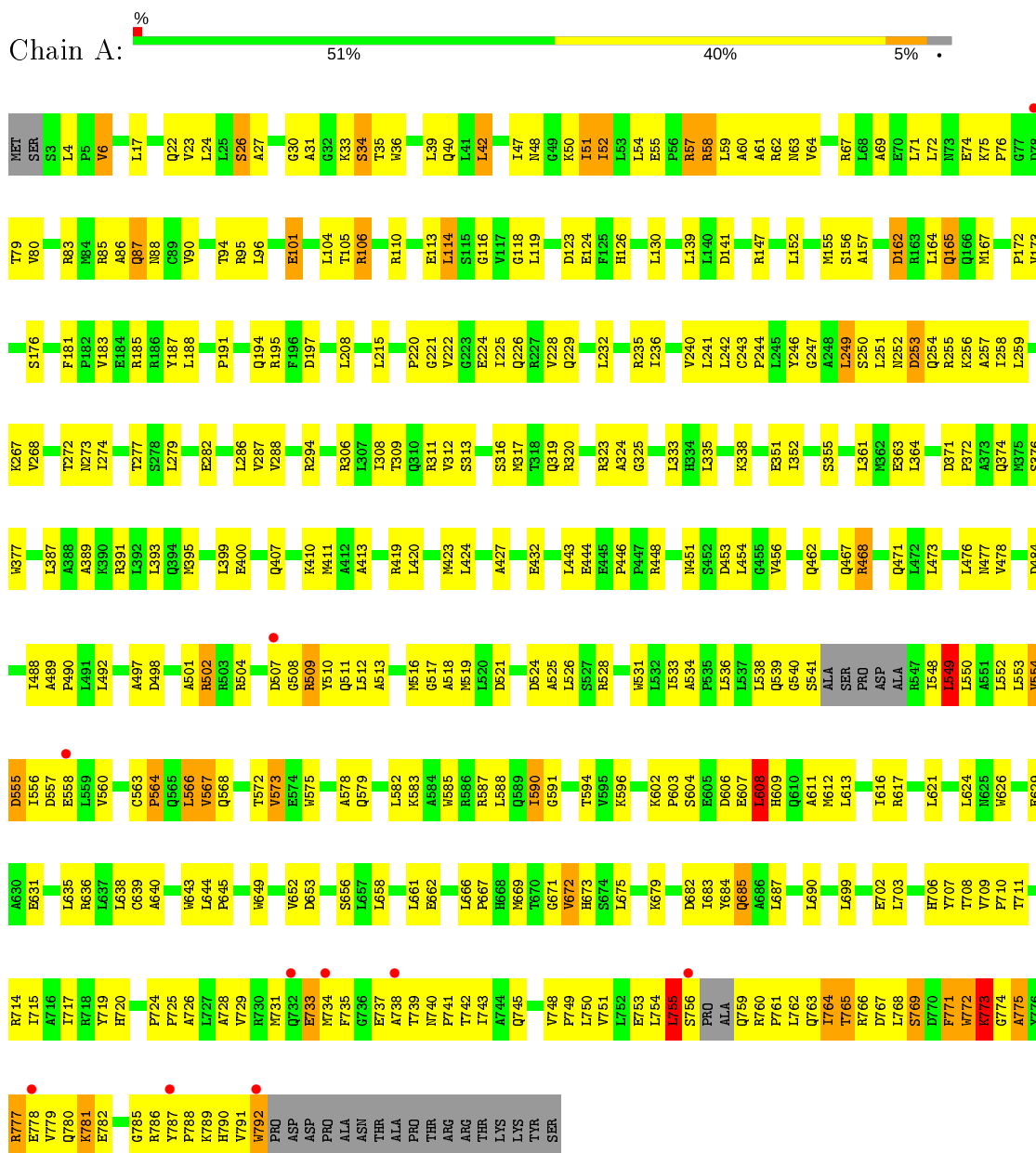
Continued from previous page...

Mol	Chain	Residues	Atoms			ZeroOcc	AltConf
			Total	O	P		
4	A	1	5	4	1	0	0
4	A	1	5	4	1	0	0
4	A	1	5	4	1	0	0

3 Residue-property plots [i](#)

These plots are drawn for all protein, RNA and DNA chains in the entry. The first graphic for a chain summarises the proportions of the various outlier classes displayed in the second graphic. The second graphic shows the sequence view annotated by issues in geometry and electron density. Residues are color-coded according to the number of geometric quality criteria for which they contain at least one outlier: green = 0, yellow = 1, orange = 2 and red = 3 or more. A red dot above a residue indicates a poor fit to the electron density ($RSRZ > 2$). Stretches of 2 or more consecutive residues without any outlier are shown as a green connector. Residues present in the sample, but not in the model, are shown in grey.

- Molecule 1: ATP-dependent RNA helicase HrpB



4 Data and refinement statistics

Property	Value	Source
Space group	P 21 21 21	Depositor
Cell constants a, b, c, α , β , γ	48.55Å 106.37Å 180.00Å 90.00° 90.00° 90.00°	Depositor
Resolution (Å)	53.19 – 3.02 91.58 – 3.02	Depositor EDS
% Data completeness (in resolution range)	99.9 (53.19-3.02) 99.9 (91.58-3.02)	Depositor EDS
R_{merge}	0.18	Depositor
R_{sym}	(Not available)	Depositor
$\langle I/\sigma(I) \rangle$ ¹	2.17 (at 3.01Å)	Xtrriage
Refinement program	PHENIX (1.14rc1_3177: ???)	Depositor
R, R_{free}	0.208 , 0.263 0.209 , 0.263	Depositor DCC
R_{free} test set	946 reflections (4.96%)	wwPDB-VP
Wilson B-factor (Å ²)	65.9	Xtrriage
Anisotropy	0.411	Xtrriage
Bulk solvent k_{sol} (e/Å ³), B_{sol} (Å ²)	0.30 , 54.2	EDS
L-test for twinning ²	$\langle L \rangle = 0.49$, $\langle L^2 \rangle = 0.32$	Xtrriage
Estimated twinning fraction	No twinning to report.	Xtrriage
F_o, F_c correlation	0.92	EDS
Total number of atoms	6135	wwPDB-VP
Average B, all atoms (Å ²)	69.0	wwPDB-VP

Xtrriage's analysis on translational NCS is as follows: *The largest off-origin peak in the Patterson function is 4.48% of the height of the origin peak. No significant pseudotranslation is detected.*

¹Intensities estimated from amplitudes.

²Theoretical values of $\langle |L| \rangle$, $\langle L^2 \rangle$ for acentric reflections are 0.5, 0.333 respectively for untwinned datasets, and 0.375, 0.2 for perfectly twinned datasets.

5 Model quality [i](#)

5.1 Standard geometry [i](#)

Bond lengths and bond angles in the following residue types are not validated in this section: ALF, PO4, ADP

The Z score for a bond length (or angle) is the number of standard deviations the observed value is removed from the expected value. A bond length (or angle) with $|Z| > 5$ is considered an outlier worth inspection. RMSZ is the root-mean-square of all Z scores of the bond lengths (or angles).

Mol	Chain	Bond lengths		Bond angles	
		RMSZ	# Z >5	RMSZ	# Z >5
1	A	0.33	0/6160	0.59	2/8359 (0.0%)

Chiral center outliers are detected by calculating the chiral volume of a chiral center and verifying if the center is modelled as a planar moiety or with the opposite hand. A planarity outlier is detected by checking planarity of atoms in a peptide group, atoms in a mainchain group or atoms of a sidechain that are expected to be planar.

Mol	Chain	#Chirality outliers	#Planarity outliers
1	A	0	10

There are no bond length outliers.

All (2) bond angle outliers are listed below:

Mol	Chain	Res	Type	Atoms	Z	Observed($^{\circ}$)	Ideal($^{\circ}$)
1	A	739	THR	C-N-CA	8.05	141.83	121.70
1	A	755	LEU	CA-CB-CG	-6.85	99.54	115.30

There are no chirality outliers.

All (10) planarity outliers are listed below:

Mol	Chain	Res	Type	Group
1	A	249	LEU	Peptide
1	A	507	ASP	Peptide
1	A	549	LEU	Peptide
1	A	564	PRO	Peptide
1	A	608	LEU	Mainchain,Peptide
1	A	738	ALA	Peptide
1	A	772	TRP	Peptide
1	A	773	LYS	Peptide

Continued on next page...

Continued from previous page...

Mol	Chain	Res	Type	Group
1	A	775	ALA	Peptide

5.2 Too-close contacts

In the following table, the Non-H and H(model) columns list the number of non-hydrogen atoms and hydrogen atoms in the chain respectively. The H(added) column lists the number of hydrogen atoms added and optimized by MolProbity. The Clashes column lists the number of clashes within the asymmetric unit, whereas Symm-Clashes lists symmetry related clashes.

Mol	Chain	Non-H	H(model)	H(added)	Clashes	Symm-Clashes
1	A	6061	0	6206	399	0
2	A	27	12	12	3	0
3	A	5	0	0	4	0
4	A	30	0	0	3	13
All	All	6123	12	6218	400	13

The all-atom clashscore is defined as the number of clashes found per 1000 atoms (including hydrogen atoms). The all-atom clashscore for this structure is 32.

All (400) close contacts within the same asymmetric unit are listed below, sorted by their clash magnitude.

Atom-1	Atom-2	Interatomic distance (Å)	Clash overlap (Å)
1:A:608:LEU:HA	1:A:611:ALA:HB3	1.29	1.08
1:A:519:MET:HG3	1:A:549:LEU:HD12	1.26	1.07
1:A:755:LEU:HD21	1:A:764:ILE:H	1.29	0.98
1:A:754:LEU:HD12	1:A:764:ILE:HG22	1.46	0.97
1:A:766:ARG:HD2	1:A:768:LEU:H	1.31	0.94
1:A:34:SER:OG	3:A:902:ALF:F4	1.80	0.89
1:A:682:ASP:HB3	1:A:685:GLN:HE22	1.37	0.89
1:A:617:ARG:NH2	1:A:662:GLU:OE2	2.07	0.87
1:A:518:ALA:HA	1:A:550:LEU:HB3	1.56	0.87
1:A:549:LEU:HA	1:A:550:LEU:CD2	2.05	0.87
1:A:771:PHE:O	1:A:775:ALA:N	2.07	0.86
1:A:731:MET:HB2	1:A:754:LEU:O	1.74	0.86
1:A:516:MET:CE	1:A:550:LEU:HD11	2.06	0.84
1:A:759:GLN:OE1	1:A:760:ARG:N	2.09	0.84
1:A:755:LEU:HD13	1:A:762:LEU:HA	1.59	0.84
1:A:587:ARG:NH2	4:A:907:PO4:O3	2.11	0.83
1:A:573:VAL:HA	1:A:583:LYS:O	1.79	0.83
1:A:728:ALA:HA	1:A:753:GLU:HB2	1.60	0.83

Continued on next page...

Continued from previous page...

Atom-1	Atom-2	Interatomic distance (Å)	Clash overlap (Å)
1:A:232:LEU:HD22	1:A:236:ILE:HD11	1.60	0.83
1:A:519:MET:HG3	1:A:549:LEU:CD1	2.08	0.82
1:A:791:VAL:O	1:A:792:TRP:HB3	1.77	0.82
1:A:424:LEU:HD12	1:A:476:LEU:HD11	1.62	0.81
1:A:255:ARG:HD2	1:A:259:LEU:HG	1.61	0.81
1:A:731:MET:HG2	1:A:731:MET:O	1.78	0.81
1:A:549:LEU:HA	1:A:550:LEU:HD23	1.63	0.81
1:A:549:LEU:HB2	1:A:550:LEU:HB2	1.63	0.80
1:A:766:ARG:CZ	1:A:769:SER:HA	2.11	0.80
1:A:781:LYS:NZ	1:A:785:GLY:HA2	1.96	0.80
1:A:773:LYS:HG2	1:A:773:LYS:O	1.80	0.80
1:A:755:LEU:CD2	1:A:764:ILE:H	1.95	0.80
1:A:516:MET:HE1	1:A:550:LEU:HD11	1.64	0.79
1:A:631:GLU:O	1:A:635:LEU:HD23	1.82	0.79
1:A:33:LYS:HB3	1:A:155:MET:HE3	1.62	0.79
1:A:536:LEU:HB2	1:A:554:VAL:HG12	1.62	0.79
1:A:766:ARG:CD	1:A:768:LEU:H	1.95	0.79
1:A:740:ASN:HB2	1:A:769:SER:HB2	1.64	0.78
1:A:608:LEU:HA	1:A:611:ALA:CB	2.10	0.78
1:A:755:LEU:HD13	1:A:763:GLN:H	1.48	0.78
1:A:557:ASP:OD1	1:A:558:GLU:N	2.18	0.76
1:A:35:THR:HG21	1:A:67:ARG:HD3	1.68	0.76
1:A:254:GLN:O	1:A:258:ILE:HD12	1.87	0.75
1:A:50:LYS:HG2	1:A:116:GLY:O	1.86	0.75
1:A:253:ASP:HA	1:A:256:LYS:HE3	1.67	0.75
1:A:451:ASN:HD22	1:A:456:VAL:HG21	1.49	0.75
1:A:729:VAL:HG11	1:A:734:MET:HG2	1.70	0.74
1:A:582:LEU:HG	1:A:583:LYS:H	1.52	0.74
1:A:616:ILE:HD13	1:A:624:LEU:HD11	1.70	0.74
1:A:167:MET:CE	1:A:376:SER:HB3	2.17	0.74
1:A:755:LEU:HD13	1:A:762:LEU:CA	2.17	0.74
1:A:755:LEU:HD13	1:A:763:GLN:N	2.02	0.73
1:A:451:ASN:HD21	1:A:456:VAL:HG11	1.52	0.73
1:A:106:ARG:O	1:A:110:ARG:HG2	1.88	0.73
1:A:17:LEU:HD23	1:A:23:VAL:HG21	1.70	0.73
1:A:755:LEU:HD22	1:A:763:GLN:HB2	1.69	0.73
1:A:613:LEU:HD22	1:A:661:LEU:HB3	1.69	0.72
1:A:682:ASP:O	1:A:685:GLN:NE2	2.22	0.72
1:A:771:PHE:C	1:A:774:GLY:H	1.91	0.72
1:A:766:ARG:NH1	1:A:771:PHE:H	1.88	0.72
1:A:578:ALA:O	1:A:579:GLN:HG2	1.91	0.71

Continued on next page...

Continued from previous page...

Atom-1	Atom-2	Interatomic distance (Å)	Clash overlap (Å)
1:A:167:MET:HE3	1:A:376:SER:HB3	1.72	0.71
1:A:728:ALA:CA	1:A:753:GLU:HB2	2.20	0.71
1:A:756:SER:HB3	1:A:761:PRO:HB3	1.72	0.71
1:A:287:VAL:HG23	1:A:324:ALA:HB2	1.71	0.71
1:A:519:MET:CG	1:A:549:LEU:HD12	2.15	0.71
1:A:87:GLN:HB3	1:A:467:GLN:OE1	1.91	0.70
1:A:766:ARG:HD2	1:A:768:LEU:N	2.05	0.70
1:A:257:ALA:O	1:A:267:LYS:NZ	2.21	0.70
1:A:715:ILE:HD13	1:A:729:VAL:HG23	1.73	0.70
1:A:781:LYS:CE	1:A:785:GLY:HA2	2.22	0.70
1:A:549:LEU:CA	1:A:550:LEU:HB2	2.23	0.69
1:A:42:LEU:O	1:A:95:ARG:NH2	2.25	0.69
1:A:604:SER:OG	1:A:607:GLU:HG2	1.91	0.69
1:A:549:LEU:CB	1:A:550:LEU:HB2	2.22	0.69
1:A:567:VAL:HB	1:A:590:ILE:HG23	1.73	0.69
1:A:534:ALA:HA	1:A:555:ASP:HB3	1.75	0.69
1:A:771:PHE:O	1:A:774:GLY:N	2.25	0.68
1:A:253:ASP:HA	1:A:256:LYS:CB	2.24	0.68
1:A:653:ASP:OD1	1:A:656:SER:OG	2.08	0.68
1:A:563:CYS:HB3	1:A:564:PRO:HD2	1.74	0.68
1:A:777:ARG:O	1:A:780:GLN:HG2	1.93	0.68
1:A:502:ARG:HG3	1:A:531:TRP:CZ3	2.29	0.68
1:A:687:LEU:O	1:A:690:LEU:HB2	1.93	0.67
1:A:640:ALA:HB2	1:A:703:LEU:CD1	2.24	0.67
1:A:743:ILE:HG23	1:A:750:LEU:HD21	1.77	0.67
1:A:232:LEU:HD22	1:A:236:ILE:CD1	2.24	0.67
1:A:59:LEU:HD13	1:A:247:GLY:O	1.95	0.67
1:A:539:GLN:HG2	1:A:540:GLY:N	2.10	0.67
1:A:71:LEU:HD23	1:A:71:LEU:O	1.95	0.66
1:A:253:ASP:HA	1:A:256:LYS:HB2	1.78	0.66
1:A:6:VAL:HB	1:A:31:ALA:O	1.95	0.65
1:A:511:GLN:HA	1:A:517:GLY:HA2	1.76	0.65
1:A:250:SER:OG	1:A:252:ASN:HB2	1.97	0.65
1:A:737:GLU:HB2	1:A:772:TRP:HZ3	1.62	0.65
1:A:729:VAL:HG11	1:A:734:MET:CG	2.27	0.64
1:A:702:GLU:HG2	1:A:745:GLN:HG3	1.78	0.64
1:A:728:ALA:HA	1:A:753:GLU:O	1.98	0.64
1:A:517:GLY:O	1:A:550:LEU:HG	1.97	0.64
1:A:775:ALA:HB1	1:A:778:GLU:HG2	1.78	0.64
1:A:162:ASP:OD1	1:A:162:ASP:N	2.31	0.64
1:A:502:ARG:HG3	1:A:531:TRP:CH2	2.33	0.64

Continued on next page...

Continued from previous page...

Atom-1	Atom-2	Interatomic distance (Å)	Clash overlap (Å)
1:A:33:LYS:HE2	3:A:902:ALF:F2	1.88	0.64
1:A:675:LEU:HG	1:A:679:LYS:HE3	1.79	0.63
1:A:666:LEU:HA	1:A:669:MET:HE3	1.79	0.63
1:A:221:GLY:O	1:A:225:ILE:HG13	1.98	0.63
1:A:259:LEU:O	1:A:267:LYS:NZ	2.27	0.62
1:A:294:ARG:HD3	1:A:309:THR:HG22	1.82	0.62
1:A:706:HIS:NE2	1:A:714:ARG:HD3	2.14	0.61
1:A:395:MET:CE	1:A:497:ALA:HB3	2.29	0.61
1:A:33:LYS:HB3	1:A:155:MET:CE	2.31	0.61
1:A:766:ARG:HD2	1:A:767:ASP:N	2.16	0.61
1:A:316:SER:O	1:A:320:ARG:HG3	2.01	0.61
1:A:755:LEU:CD1	1:A:763:GLN:H	2.12	0.61
1:A:755:LEU:HB2	1:A:762:LEU:H	1.66	0.61
1:A:755:LEU:HD22	1:A:763:GLN:CB	2.30	0.61
1:A:187:TYR:CD1	1:A:338:LYS:HG2	2.36	0.60
1:A:139:LEU:HG	1:A:152:LEU:HD11	1.82	0.60
1:A:572:THR:HG21	1:A:587:ARG:NH1	2.17	0.60
1:A:533:ILE:HG23	1:A:556:ILE:HG22	1.84	0.60
1:A:583:LYS:HE3	1:A:585:TRP:CD2	2.36	0.60
1:A:371:ASP:HB3	1:A:374:GLN:HG3	1.84	0.60
1:A:451:ASN:ND2	1:A:456:VAL:HG11	2.15	0.60
1:A:424:LEU:HD12	1:A:476:LEU:CD1	2.32	0.60
1:A:549:LEU:HA	1:A:550:LEU:HB2	1.82	0.60
1:A:27:ALA:HB3	1:A:33:LYS:HD3	1.84	0.60
1:A:643:TRP:C	1:A:645:PRO:HD3	2.22	0.60
1:A:755:LEU:HB2	1:A:762:LEU:N	2.16	0.59
1:A:251:LEU:HD23	1:A:251:LEU:O	2.01	0.59
1:A:755:LEU:HD21	1:A:764:ILE:N	2.09	0.59
1:A:737:GLU:HG3	1:A:772:TRP:CZ3	2.37	0.59
1:A:446:PRO:HG3	1:A:536:LEU:HD11	1.83	0.59
1:A:666:LEU:HA	1:A:669:MET:CE	2.31	0.59
1:A:717:ILE:HD13	1:A:750:LEU:HD11	1.84	0.59
1:A:755:LEU:HD22	1:A:763:GLN:H	1.67	0.59
1:A:58:ARG:O	1:A:58:ARG:HG2	2.02	0.59
1:A:706:HIS:CD2	1:A:714:ARG:HD3	2.37	0.59
1:A:785:GLY:O	1:A:786:ARG:HG2	2.02	0.59
1:A:255:ARG:CD	1:A:259:LEU:HG	2.31	0.58
1:A:312:VAL:HG22	1:A:316:SER:HB2	1.86	0.58
1:A:488:ILE:O	1:A:492:LEU:HG	2.03	0.58
1:A:453:ASP:OD1	1:A:454:LEU:N	2.36	0.58
1:A:468:ARG:O	1:A:468:ARG:HD3	2.04	0.58

Continued on next page...

Continued from previous page...

Atom-1	Atom-2	Interatomic distance (Å)	Clash overlap (Å)
1:A:682:ASP:HB3	1:A:685:GLN:NE2	2.15	0.58
1:A:715:ILE:CD1	1:A:729:VAL:HG23	2.34	0.57
1:A:608:LEU:O	1:A:612:MET:HG3	2.04	0.57
1:A:24:LEU:HD12	1:A:164:LEU:HG	1.86	0.57
1:A:540:GLY:O	1:A:548:ILE:HD11	2.04	0.57
1:A:106:ARG:HH11	1:A:106:ARG:HG2	1.69	0.57
1:A:17:LEU:HD23	1:A:23:VAL:CG2	2.34	0.57
1:A:60:ALA:O	1:A:64:VAL:HG13	2.04	0.57
1:A:621:LEU:HG	1:A:658:LEU:HD21	1.86	0.57
1:A:666:LEU:HD12	1:A:669:MET:HE3	1.87	0.57
1:A:246:TYR:CZ	1:A:249:LEU:HD21	2.40	0.56
1:A:387:LEU:O	1:A:391:ARG:HG3	2.06	0.56
1:A:165:GLN:OE1	1:A:173:VAL:HG21	2.05	0.56
1:A:393:LEU:HB3	1:A:399:LEU:HD13	1.87	0.56
1:A:672:VAL:HG12	1:A:673:HIS:N	2.19	0.56
1:A:775:ALA:C	1:A:777:ARG:H	2.08	0.56
1:A:253:ASP:O	1:A:256:LYS:HB3	2.05	0.56
1:A:58:ARG:O	1:A:58:ARG:CG	2.53	0.56
1:A:407:GLN:O	1:A:411:MET:HG3	2.06	0.56
1:A:775:ALA:HB1	1:A:778:GLU:CG	2.35	0.56
1:A:741:PRO:HB2	1:A:750:LEU:HD23	1.87	0.56
1:A:729:VAL:CG1	1:A:734:MET:HG2	2.36	0.56
1:A:782:GLU:N	1:A:782:GLU:OE1	2.39	0.56
1:A:761:PRO:HB2	1:A:762:LEU:HG	1.88	0.55
1:A:539:GLN:HG2	1:A:540:GLY:H	1.71	0.55
1:A:312:VAL:HG13	1:A:317:MET:HG3	1.89	0.55
1:A:167:MET:HE1	1:A:376:SER:HB3	1.89	0.55
1:A:531:TRP:CE2	1:A:560:VAL:HG21	2.42	0.55
1:A:113:GLU:O	1:A:147:ARG:HG3	2.06	0.55
1:A:755:LEU:CD1	1:A:762:LEU:HA	2.35	0.55
1:A:782:GLU:CD	1:A:782:GLU:H	2.09	0.55
1:A:123:ASP:OD1	1:A:155:MET:HE2	2.07	0.55
1:A:616:ILE:CD1	1:A:624:LEU:HD11	2.36	0.55
1:A:753:GLU:HA	1:A:765:THR:HG22	1.89	0.55
1:A:85:ARG:CZ	1:A:101:GLU:HG2	2.37	0.54
1:A:766:ARG:NH2	1:A:769:SER:HA	2.22	0.54
1:A:502:ARG:NH1	1:A:594:THR:O	2.41	0.54
1:A:473:LEU:HD22	1:A:478:VAL:HG21	1.88	0.54
1:A:582:LEU:HG	1:A:583:LYS:N	2.23	0.54
1:A:79:THR:HA	1:A:94:THR:HA	1.90	0.54
1:A:410:LYS:O	1:A:413:ALA:HB3	2.08	0.54

Continued on next page...

Continued from previous page...

Atom-1	Atom-2	Interatomic distance (Å)	Clash overlap (Å)
1:A:766:ARG:HH12	1:A:771:PHE:H	1.54	0.54
1:A:30:GLY:HA2	2:A:901:ADP:H5'1	1.89	0.54
1:A:427:ALA:HB1	1:A:432:GLU:HB3	1.91	0.53
1:A:775:ALA:HB1	1:A:778:GLU:CD	2.28	0.53
1:A:4:LEU:HD12	1:A:36:TRP:CG	2.42	0.53
1:A:85:ARG:HD3	1:A:468:ARG:NH2	2.22	0.53
1:A:444:GLU:OE1	1:A:468:ARG:NH2	2.41	0.53
1:A:728:ALA:HB2	1:A:753:GLU:OE1	2.08	0.53
1:A:556:ILE:HG12	1:A:557:ASP:N	2.24	0.53
1:A:742:THR:HG22	1:A:749:PRO:HB3	1.91	0.53
1:A:517:GLY:O	1:A:550:LEU:HB3	2.08	0.53
1:A:83:ARG:HA	1:A:88:ASN:HB3	1.92	0.52
1:A:643:TRP:HH2	1:A:725:PRO:HD3	1.75	0.52
1:A:756:SER:HB3	1:A:761:PRO:CB	2.40	0.52
1:A:60:ALA:O	1:A:64:VAL:HG22	2.10	0.52
1:A:764:ILE:HG21	1:A:771:PHE:CE2	2.44	0.52
1:A:708:THR:HG22	1:A:714:ARG:HG2	1.92	0.51
1:A:57:ARG:O	1:A:58:ARG:HB3	2.09	0.51
1:A:253:ASP:HA	1:A:256:LYS:HB3	1.90	0.51
1:A:629:GLU:HG2	1:A:684:TYR:CD2	2.46	0.51
1:A:640:ALA:HB2	1:A:703:LEU:HD12	1.91	0.51
1:A:54:LEU:HD22	1:A:104:LEU:HD23	1.93	0.51
1:A:473:LEU:HD22	1:A:478:VAL:CG2	2.40	0.51
1:A:534:ALA:CA	1:A:555:ASP:HB3	2.41	0.51
1:A:312:VAL:CG2	1:A:316:SER:HB2	2.40	0.51
1:A:787:TYR:N	1:A:788:PRO:CD	2.74	0.51
1:A:743:ILE:HG23	1:A:750:LEU:CD2	2.41	0.51
1:A:236:ILE:CG2	1:A:240:VAL:HB	2.40	0.50
1:A:566:LEU:O	1:A:590:ILE:HG22	2.11	0.50
1:A:643:TRP:CH2	1:A:725:PRO:HD3	2.46	0.50
1:A:671:GLY:HA2	1:A:673:HIS:CE1	2.47	0.50
1:A:253:ASP:N	1:A:253:ASP:OD1	2.43	0.50
1:A:446:PRO:HB2	1:A:448:ARG:HH12	1.76	0.50
1:A:755:LEU:CD2	1:A:763:GLN:H	2.24	0.50
1:A:508:GLY:O	1:A:510:TYR:HD1	1.93	0.50
1:A:517:GLY:O	1:A:550:LEU:CG	2.59	0.50
1:A:737:GLU:CB	1:A:772:TRP:HZ3	2.25	0.50
1:A:294:ARG:CD	1:A:309:THR:HG22	2.41	0.50
1:A:195:ARG:NH2	4:A:905:PO4:O3	2.45	0.50
1:A:361:LEU:CD1	1:A:372:PRO:HG3	2.42	0.50
1:A:626:TRP:CD2	1:A:683:ILE:HD11	2.47	0.50

Continued on next page...

Continued from previous page...

Atom-1	Atom-2	Interatomic distance (Å)	Clash overlap (Å)
1:A:755:LEU:HD22	1:A:763:GLN:N	2.26	0.50
1:A:124:GLU:OE2	3:A:902:ALF:F3	2.18	0.50
1:A:72:LEU:CB	1:A:74:GLU:HG3	2.41	0.50
1:A:756:SER:CB	1:A:761:PRO:HB3	2.42	0.50
1:A:728:ALA:CB	1:A:753:GLU:HB2	2.41	0.50
1:A:508:GLY:O	1:A:510:TYR:CD1	2.65	0.49
1:A:518:ALA:HB1	1:A:552:LEU:HD12	1.92	0.49
1:A:282:GLU:HA	1:A:282:GLU:OE1	2.12	0.49
1:A:549:LEU:O	1:A:549:LEU:HD23	2.12	0.49
1:A:57:ARG:HH22	1:A:273:ASN:CG	2.15	0.49
1:A:85:ARG:NH2	1:A:101:GLU:HG2	2.27	0.49
1:A:534:ALA:CB	1:A:555:ASP:HB3	2.42	0.49
1:A:709:VAL:HG11	1:A:729:VAL:HG21	1.95	0.49
1:A:766:ARG:CZ	1:A:769:SER:CA	2.88	0.49
1:A:750:LEU:H	1:A:750:LEU:HD22	1.76	0.49
1:A:549:LEU:HA	1:A:550:LEU:CB	2.42	0.49
1:A:766:ARG:CD	1:A:769:SER:H	2.26	0.49
1:A:311:ARG:NH1	4:A:906:PO4:O4	2.46	0.49
1:A:534:ALA:HA	1:A:555:ASP:CB	2.42	0.49
1:A:74:GLU:OE1	1:A:79:THR:HB	2.13	0.49
1:A:224:GLU:O	1:A:228:VAL:HG23	2.13	0.48
1:A:740:ASN:CB	1:A:769:SER:HB2	2.40	0.48
1:A:147:ARG:NE	1:A:147:ARG:HA	2.27	0.48
1:A:48:ASN:O	1:A:118:GLY:HA3	2.13	0.48
1:A:55:GLU:HG3	1:A:64:VAL:HG21	1.95	0.48
1:A:737:GLU:CG	1:A:772:TRP:HZ3	2.25	0.48
1:A:518:ALA:HB3	1:A:552:LEU:HD11	1.94	0.48
1:A:22:GLN:O	1:A:172:PRO:HD2	2.13	0.48
1:A:524:ASP:OD1	1:A:526:LEU:HD12	2.13	0.48
1:A:220:PRO:HD2	1:A:224:GLU:HG2	1.96	0.48
1:A:232:LEU:HD22	1:A:236:ILE:CG1	2.44	0.48
1:A:282:GLU:OE2	2:A:901:ADP:H2'	2.13	0.48
1:A:453:ASP:HB3	1:A:456:VAL:HG13	1.96	0.48
1:A:737:GLU:CG	1:A:772:TRP:CZ3	2.97	0.48
1:A:253:ASP:CA	1:A:256:LYS:HE3	2.41	0.48
1:A:771:PHE:CD1	1:A:771:PHE:C	2.86	0.48
1:A:759:GLN:NE2	1:A:782:GLU:OE2	2.47	0.48
1:A:788:PRO:CB	1:A:789:LYS:HG2	2.44	0.48
1:A:735:PHE:HB2	1:A:792:TRP:O	2.14	0.48
1:A:509:ARG:HG2	1:A:519:MET:SD	2.54	0.47
1:A:711:THR:HG22	1:A:711:THR:O	2.14	0.47

Continued on next page...

Continued from previous page...

Atom-1	Atom-2	Interatomic distance (Å)	Clash overlap (Å)
1:A:451:ASN:ND2	1:A:456:VAL:HG21	2.25	0.47
1:A:781:LYS:HZ3	1:A:785:GLY:HA2	1.79	0.47
1:A:52:ILE:C	1:A:52:ILE:HD12	2.35	0.47
1:A:423:MET:CE	1:A:492:LEU:HD23	2.45	0.47
1:A:272:THR:OG1	1:A:274:ILE:HD12	2.14	0.47
1:A:638:LEU:CD1	1:A:652:VAL:CG2	2.93	0.47
1:A:312:VAL:HG22	1:A:313:SER:N	2.29	0.47
1:A:85:ARG:HD3	1:A:468:ARG:HH22	1.80	0.47
1:A:549:LEU:CA	1:A:550:LEU:CB	2.92	0.47
1:A:208:LEU:HD11	1:A:268:VAL:HG21	1.97	0.47
1:A:287:VAL:CG2	1:A:324:ALA:HB2	2.43	0.47
1:A:639:CYS:HB3	1:A:643:TRP:CZ3	2.49	0.47
1:A:734:MET:O	1:A:772:TRP:HH2	1.97	0.47
1:A:735:PHE:HB2	1:A:792:TRP:C	2.36	0.47
1:A:114:LEU:HA	1:A:114:LEU:HD12	1.74	0.46
1:A:395:MET:HE3	1:A:497:ALA:HB3	1.97	0.46
1:A:58:ARG:HA	1:A:61:ALA:HB3	1.97	0.46
1:A:69:ALA:HB3	1:A:76:PRO:HD3	1.98	0.46
1:A:165:GLN:H	1:A:165:GLN:HG2	1.50	0.46
1:A:419:ARG:NH2	1:A:498:ASP:OD1	2.49	0.46
1:A:755:LEU:HD22	1:A:763:GLN:CA	2.46	0.46
1:A:26:SER:HA	1:A:156:SER:O	2.16	0.46
1:A:86:ALA:HA	1:A:471:GLN:HE22	1.80	0.46
1:A:743:ILE:CG2	1:A:750:LEU:HD21	2.46	0.46
1:A:516:MET:HE2	1:A:516:MET:HB2	1.87	0.46
2:A:901:ADP:O3B	3:A:902:ALF:F1	2.24	0.46
1:A:552:LEU:HB3	1:A:555:ASP:OD2	2.16	0.46
1:A:707:TYR:CE2	1:A:741:PRO:HB3	2.51	0.46
1:A:772:TRP:O	1:A:773:LYS:HB3	2.15	0.46
1:A:575:TRP:O	1:A:575:TRP:CD1	2.70	0.45
1:A:568:GLN:HA	1:A:568:GLN:OE1	2.16	0.45
1:A:737:GLU:HG3	1:A:772:TRP:CE3	2.52	0.45
1:A:766:ARG:NH1	1:A:771:PHE:CD1	2.85	0.45
1:A:251:LEU:N	1:A:254:GLN:OE1	2.50	0.45
1:A:773:LYS:NZ	1:A:773:LYS:HB3	2.31	0.45
1:A:215:LEU:HD21	1:A:288:VAL:HG23	1.98	0.45
1:A:699:LEU:O	1:A:702:GLU:O	2.34	0.45
1:A:88:ASN:OD1	1:A:88:ASN:N	2.48	0.45
1:A:588:LEU:HB2	1:A:596:LYS:HB2	1.98	0.45
1:A:504:ARG:HB3	1:A:509:ARG:O	2.18	0.44
1:A:607:GLU:O	1:A:608:LEU:HB3	2.17	0.44

Continued on next page...

Continued from previous page...

Atom-1	Atom-2	Interatomic distance (Å)	Clash overlap (Å)
1:A:39:LEU:HD22	1:A:72:LEU:HD11	1.99	0.44
1:A:27:ALA:CB	1:A:176:SER:HB3	2.47	0.44
1:A:513:ALA:O	1:A:591:GLY:O	2.35	0.44
1:A:602:LYS:N	1:A:603:PRO:HD3	2.32	0.44
1:A:4:LEU:CD1	1:A:36:TRP:HB2	2.48	0.44
1:A:215:LEU:HA	1:A:286:LEU:O	2.17	0.44
1:A:636:ARG:HG2	1:A:719:TYR:CE2	2.52	0.44
1:A:17:LEU:HD23	1:A:17:LEU:HA	1.83	0.44
1:A:243:CYS:HB3	1:A:257:ALA:HB2	2.00	0.44
1:A:188:LEU:HB3	1:A:333:LEU:HD11	1.99	0.44
1:A:709:VAL:HB	1:A:710:PRO:HD2	1.98	0.44
1:A:147:ARG:HA	1:A:147:ARG:HE	1.83	0.44
1:A:550:LEU:N	1:A:550:LEU:HD22	2.33	0.44
1:A:62:ARG:HG3	1:A:63:ASN:N	2.33	0.44
1:A:309:THR:HG23	1:A:541:SER:O	2.17	0.44
1:A:501:ALA:HB2	1:A:512:LEU:HD13	2.00	0.44
1:A:519:MET:N	1:A:550:LEU:O	2.50	0.44
1:A:72:LEU:HB2	1:A:74:GLU:HG3	1.99	0.44
1:A:643:TRP:CD2	1:A:748:VAL:HG21	2.52	0.44
1:A:787:TYR:N	1:A:788:PRO:HD3	2.33	0.44
1:A:232:LEU:CD2	1:A:236:ILE:HD11	2.41	0.44
1:A:222:VAL:O	1:A:226:GLN:HG3	2.18	0.43
1:A:224:GLU:OE1	1:A:294:ARG:NH2	2.51	0.43
1:A:420:LEU:HD21	1:A:443:LEU:HD12	2.00	0.43
1:A:446:PRO:HB2	1:A:448:ARG:NH1	2.33	0.43
1:A:608:LEU:HG	1:A:608:LEU:O	2.17	0.43
1:A:638:LEU:CD1	1:A:652:VAL:HG23	2.48	0.43
1:A:42:LEU:HD23	1:A:42:LEU:HA	1.76	0.43
1:A:51:ILE:HG12	1:A:96:LEU:HD12	2.01	0.43
1:A:516:MET:SD	1:A:550:LEU:HD11	2.59	0.43
1:A:724:PRO:HB2	1:A:751:VAL:HG23	2.00	0.43
1:A:635:LEU:HD12	1:A:720:HIS:HA	2.01	0.43
1:A:279:LEU:HA	1:A:279:LEU:HD12	1.71	0.43
1:A:488:ILE:CG2	1:A:556:ILE:HD12	2.49	0.43
1:A:488:ILE:HG21	1:A:556:ILE:HD12	2.01	0.43
1:A:563:CYS:CB	1:A:564:PRO:HD2	2.46	0.43
1:A:188:LEU:O	1:A:335:LEU:HA	2.19	0.43
1:A:755:LEU:CG	1:A:763:GLN:H	2.32	0.43
1:A:246:TYR:CE2	1:A:249:LEU:HD21	2.53	0.43
1:A:489:ALA:N	1:A:490:PRO:HD2	2.34	0.43
1:A:726:ALA:HA	1:A:751:VAL:O	2.19	0.43

Continued on next page...

Continued from previous page...

Atom-1	Atom-2	Interatomic distance (Å)	Clash overlap (Å)
1:A:126:HIS:CE1	1:A:157:ALA:HB3	2.54	0.43
1:A:351:GLU:HG2	1:A:355:SER:OG	2.19	0.43
1:A:629:GLU:HG2	1:A:684:TYR:CE2	2.54	0.43
1:A:255:ARG:O	1:A:259:LEU:HB2	2.19	0.42
1:A:59:LEU:HD11	1:A:254:GLN:NE2	2.34	0.42
1:A:36:TRP:CH2	1:A:40:GLN:HG3	2.53	0.42
1:A:51:ILE:O	1:A:96:LEU:HA	2.18	0.42
1:A:525:ALA:HB1	1:A:528:ARG:HH12	1.83	0.42
1:A:80:VAL:HG22	1:A:96:LEU:HD22	2.01	0.42
1:A:710:PRO:HD2	1:A:733:GLU:O	2.18	0.42
1:A:69:ALA:CB	1:A:76:PRO:HD3	2.49	0.42
1:A:525:ALA:O	1:A:528:ARG:NH1	2.52	0.42
1:A:702:GLU:O	1:A:703:LEU:HB2	2.18	0.42
1:A:130:LEU:HD13	1:A:352:ILE:HG13	2.01	0.42
1:A:606:ASP:O	1:A:609:HIS:HB2	2.20	0.42
1:A:277:THR:HG22	1:A:319:GLN:OE1	2.19	0.42
1:A:518:ALA:CB	1:A:552:LEU:CD1	2.98	0.42
1:A:236:ILE:HD12	1:A:242:LEU:HD21	2.02	0.42
1:A:306:ARG:HH11	1:A:308:ILE:HD11	1.85	0.42
1:A:47:ILE:HG21	1:A:119:LEU:HB2	2.00	0.42
1:A:531:TRP:CD2	1:A:560:VAL:CG2	3.03	0.42
1:A:728:ALA:HB2	1:A:753:GLU:HB2	2.01	0.42
1:A:63:ASN:O	1:A:67:ARG:HG3	2.19	0.42
1:A:191:PRO:HG2	1:A:194:GLN:HB2	2.01	0.42
1:A:72:LEU:HB3	1:A:74:GLU:HG3	2.01	0.42
1:A:735:PHE:CZ	1:A:787:TYR:CB	3.02	0.42
1:A:181:PHE:HB2	1:A:325:GLY:O	2.20	0.41
1:A:549:LEU:HA	1:A:550:LEU:HD22	1.95	0.41
1:A:549:LEU:N	1:A:549:LEU:CD2	2.83	0.41
1:A:250:SER:O	1:A:251:LEU:HB3	2.20	0.41
1:A:604:SER:O	1:A:607:GLU:O	2.38	0.41
1:A:518:ALA:HB1	1:A:552:LEU:CD1	2.50	0.41
1:A:575:TRP:HA	1:A:582:LEU:HA	2.02	0.41
1:A:742:THR:HA	1:A:749:PRO:HA	2.02	0.41
1:A:106:ARG:HG2	1:A:106:ARG:NH1	2.33	0.41
1:A:364:LEU:HD11	1:A:377:TRP:HZ2	1.85	0.41
1:A:666:LEU:HB3	1:A:667:PRO:HD3	2.03	0.41
1:A:229:GLN:OE1	1:A:244:PRO:HG3	2.21	0.41
1:A:4:LEU:HD12	1:A:36:TRP:CB	2.51	0.41
1:A:389:ALA:O	1:A:393:LEU:HG	2.20	0.41
1:A:781:LYS:HE3	1:A:781:LYS:H	1.86	0.41

Continued on next page...

Continued from previous page...

Atom-1	Atom-2	Interatomic distance (Å)	Clash overlap (Å)
1:A:502:ARG:HD3	1:A:531:TRP:CZ2	2.56	0.41
1:A:517:GLY:O	1:A:550:LEU:CB	2.69	0.41
1:A:766:ARG:NH1	1:A:769:SER:HA	2.35	0.41
1:A:400:GLU:OE1	1:A:400:GLU:HA	2.20	0.40
1:A:47:ILE:N	1:A:47:ILE:HD12	2.36	0.40
1:A:644:LEU:HB2	1:A:649:TRP:HE1	1.85	0.40
1:A:361:LEU:HD23	1:A:393:LEU:HD12	2.02	0.40
1:A:538:LEU:CB	1:A:553:LEU:HD13	2.51	0.40
1:A:617:ARG:NH1	1:A:658:LEU:O	2.54	0.40
1:A:781:LYS:NZ	1:A:781:LYS:HB2	2.34	0.40
1:A:308:ILE:HG23	1:A:541:SER:OG	2.21	0.40
1:A:477:ASN:O	1:A:477:ASN:ND2	2.54	0.40
1:A:531:TRP:CD2	1:A:560:VAL:HG21	2.57	0.40

All (13) symmetry-related close contacts are listed below. The label for Atom-2 includes the symmetry operator and encoded unit-cell translations to be applied.

Atom-1	Atom-2	Interatomic distance (Å)	Clash overlap (Å)
4:A:905:PO4:P	4:A:906:PO4:O3[4_556]	0.58	1.62
4:A:905:PO4:O1	4:A:906:PO4:O3[4_556]	1.04	1.16
4:A:905:PO4:O4	4:A:906:PO4:O2[4_556]	1.11	1.09
4:A:905:PO4:O4	4:A:906:PO4:P[4_556]	1.24	0.96
4:A:905:PO4:O2	4:A:906:PO4:P[4_556]	1.28	0.92
4:A:905:PO4:P	4:A:906:PO4:P[4_556]	1.38	0.82
4:A:905:PO4:O2	4:A:906:PO4:O1[4_556]	1.48	0.72
4:A:905:PO4:O2	4:A:906:PO4:O3[4_556]	1.51	0.69
4:A:905:PO4:O4	4:A:906:PO4:O3[4_556]	1.68	0.52
4:A:905:PO4:O2	4:A:906:PO4:O4[4_556]	1.88	0.32
4:A:905:PO4:O3	4:A:906:PO4:O3[4_556]	1.94	0.26
4:A:905:PO4:P	4:A:906:PO4:O4[4_556]	2.00	0.20
4:A:905:PO4:O4	4:A:906:PO4:O4[4_556]	2.02	0.18

5.3 Torsion angles [i](#)

5.3.1 Protein backbone [i](#)

In the following table, the Percentiles column shows the percent Ramachandran outliers of the chain as a percentile score with respect to all X-ray entries followed by that with respect to entries of similar resolution.

The Analysed column shows the number of residues for which the backbone conformation was analysed, and the total number of residues.

Mol	Chain	Analysed	Favoured	Allowed	Outliers	Percentiles	
1	A	777/809 (96%)	759 (98%)	18 (2%)	0	100	100

There are no Ramachandran outliers to report.

5.3.2 Protein sidechains [i](#)

In the following table, the Percentiles column shows the percent sidechain outliers of the chain as a percentile score with respect to all X-ray entries followed by that with respect to entries of similar resolution.

The Analysed column shows the number of residues for which the sidechain conformation was analysed, and the total number of residues.

Mol	Chain	Analysed	Rotameric	Outliers	Percentiles	
1	A	643/665 (97%)	589 (92%)	54 (8%)	11	37

All (54) residues with a non-rotameric sidechain are listed below:

Mol	Chain	Res	Type
1	A	6	VAL
1	A	26	SER
1	A	34	SER
1	A	42	LEU
1	A	51	ILE
1	A	52	ILE
1	A	57	ARG
1	A	58	ARG
1	A	75	LYS
1	A	87	GLN
1	A	90	VAL
1	A	101	GLU
1	A	105	THR
1	A	106	ARG
1	A	114	LEU
1	A	141	ASP
1	A	162	ASP
1	A	165	GLN
1	A	183	VAL
1	A	185	ARG
1	A	197	ASP

Continued on next page...

Continued from previous page...

Mol	Chain	Res	Type
1	A	235	ARG
1	A	241	LEU
1	A	253	ASP
1	A	323	ARG
1	A	363	GLU
1	A	462	GLN
1	A	468	ARG
1	A	484	ASP
1	A	502	ARG
1	A	509	ARG
1	A	521	ASP
1	A	549	LEU
1	A	554	VAL
1	A	555	ASP
1	A	566	LEU
1	A	567	VAL
1	A	573	VAL
1	A	590	ILE
1	A	608	LEU
1	A	672	VAL
1	A	685	GLN
1	A	733	GLU
1	A	755	LEU
1	A	764	ILE
1	A	765	THR
1	A	769	SER
1	A	771	PHE
1	A	773	LYS
1	A	777	ARG
1	A	779	VAL
1	A	781	LYS
1	A	790	HIS
1	A	792	TRP

Some sidechains can be flipped to improve hydrogen bonding and reduce clashes. All (3) such sidechains are listed below:

Mol	Chain	Res	Type
1	A	451	ASN
1	A	471	GLN
1	A	685	GLN

5.3.3 RNA [i](#)

There are no RNA molecules in this entry.

5.4 Non-standard residues in protein, DNA, RNA chains [i](#)

There are no non-standard protein/DNA/RNA residues in this entry.

5.5 Carbohydrates [i](#)

There are no carbohydrates in this entry.

5.6 Ligand geometry [i](#)

8 ligands are modelled in this entry.

In the following table, the Counts columns list the number of bonds (or angles) for which Mogul statistics could be retrieved, the number of bonds (or angles) that are observed in the model and the number of bonds (or angles) that are defined in the Chemical Component Dictionary. The Link column lists molecule types, if any, to which the group is linked. The Z score for a bond length (or angle) is the number of standard deviations the observed value is removed from the expected value. A bond length (or angle) with $|Z| > 2$ is considered an outlier worth inspection. RMSZ is the root-mean-square of all Z scores of the bond lengths (or angles).

Mol	Type	Chain	Res	Link	Bond lengths			Bond angles		
					Counts	RMSZ	# Z > 2	Counts	RMSZ	# Z > 2
4	PO4	A	906	-	4,4,4	0.94	0	6,6,6	0.39	0
4	PO4	A	905	-	4,4,4	1.85	2 (50%)	6,6,6	1.45	0
4	PO4	A	908	-	4,4,4	2.28	2 (50%)	6,6,6	1.19	1 (16%)
4	PO4	A	903	-	4,4,4	0.91	0	6,6,6	0.84	0
4	PO4	A	907	-	4,4,4	0.89	0	6,6,6	0.49	0
3	ALF	A	902	-	0,4,4	0.00	-	-		
4	PO4	A	904	-	4,4,4	0.92	0	6,6,6	0.52	0
2	ADP	A	901	1	24,29,29	1.16	3 (12%)	29,45,45	1.75	6 (20%)

In the following table, the Chirals column lists the number of chiral outliers, the number of chiral centers analysed, the number of these observed in the model and the number defined in the Chemical Component Dictionary. Similar counts are reported in the Torsion and Rings columns. '-' means no outliers of that kind were identified.

Mol	Type	Chain	Res	Link	Chirals	Torsions	Rings
2	ADP	A	901	1	-	3/12/32/32	0/3/3/3

All (7) bond length outliers are listed below:

Mol	Chain	Res	Type	Atoms	Z	Observed(Å)	Ideal(Å)
2	A	901	ADP	O4'-C1'	3.29	1.45	1.41
4	A	908	PO4	P-O2	-2.66	1.46	1.54
2	A	901	ADP	C5-C4	2.56	1.47	1.40
4	A	908	PO4	P-O4	-2.51	1.47	1.54
4	A	905	PO4	P-O4	-2.11	1.48	1.54
2	A	901	ADP	C2-N3	2.07	1.35	1.32
4	A	905	PO4	P-O2	-2.06	1.48	1.54

All (7) bond angle outliers are listed below:

Mol	Chain	Res	Type	Atoms	Z	Observed(°)	Ideal(°)
2	A	901	ADP	C3'-C2'-C1'	4.58	107.87	100.98
2	A	901	ADP	PA-O3A-PB	-4.00	119.10	132.83
2	A	901	ADP	N3-C2-N1	-3.68	122.93	128.68
2	A	901	ADP	C4-C5-N7	-2.80	106.48	109.40
2	A	901	ADP	O3B-PB-O2B	2.18	115.96	107.64
4	A	908	PO4	O4-P-O3	2.11	114.74	107.97
2	A	901	ADP	O2A-PA-O1A	2.01	122.19	112.24

There are no chirality outliers.

All (3) torsion outliers are listed below:

Mol	Chain	Res	Type	Atoms
2	A	901	ADP	O4'-C4'-C5'-O5'
2	A	901	ADP	C3'-C4'-C5'-O5'
2	A	901	ADP	C4'-C5'-O5'-PA

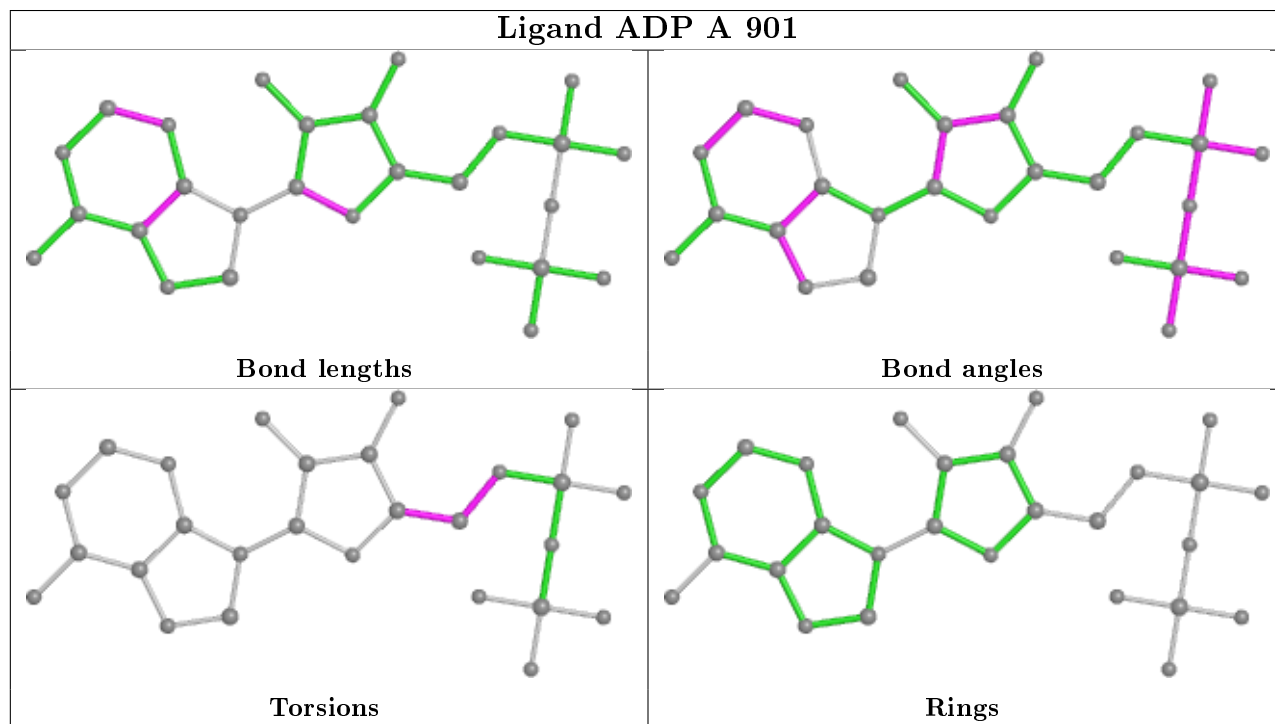
There are no ring outliers.

5 monomers are involved in 22 short contacts:

Mol	Chain	Res	Type	Clashes	Symm-Clashes
4	A	906	PO4	1	13
4	A	905	PO4	1	13
4	A	907	PO4	1	0
3	A	902	ALF	4	0
2	A	901	ADP	3	0

The following is a two-dimensional graphical depiction of Mogul quality analysis of bond lengths, bond angles, torsion angles, and ring geometry for all instances of the Ligand of Interest. In addition, ligands with molecular weight > 250 and outliers as shown on the validation Tables will

also be included. For torsion angles, if less than 5% of the Mogul distribution of torsion angles is within 10 degrees of the torsion angle in question, then that torsion angle is considered an outlier. Any bond that is central to one or more torsion angles identified as an outlier by Mogul will be highlighted in the graph. For rings, the root-mean-square deviation (RMSD) between the ring in question and similar rings identified by Mogul is calculated over all ring torsion angles. If the average RMSD is greater than 60 degrees and the minimal RMSD between the ring in question and any Mogul-identified rings is also greater than 60 degrees, then that ring is considered an outlier. The outliers are highlighted in purple. The color gray indicates Mogul did not find sufficient equivalents in the CSD to analyse the geometry.



5.7 Other polymers [i](#)

There are no such residues in this entry.

5.8 Polymer linkage issues [i](#)

There are no chain breaks in this entry.

6 Fit of model and data [i](#)

6.1 Protein, DNA and RNA chains [i](#)

In the following table, the column labelled ‘#RSRZ> 2’ contains the number (and percentage) of RSRZ outliers, followed by percent RSRZ outliers for the chain as percentile scores relative to all X-ray entries and entries of similar resolution. The OWAB column contains the minimum, median, 95th percentile and maximum values of the occupancy-weighted average B-factor per residue. The column labelled ‘Q< 0.9’ lists the number of (and percentage) of residues with an average occupancy less than 0.9.

Mol	Chain	Analysed	<RSRZ>	#RSRZ>2	OWAB(Å ²)	Q<0.9
1	A	783/809 (96%)	-0.19	10 (1%) 77 51	28, 61, 121, 219	0

All (10) RSRZ outliers are listed below:

Mol	Chain	Res	Type	RSRZ
1	A	738	ALA	5.6
1	A	787	TYR	4.5
1	A	778	GLU	3.7
1	A	756	SER	3.3
1	A	507	ASP	3.1
1	A	792	TRP	2.8
1	A	78	ASP	2.7
1	A	558	GLU	2.6
1	A	734	MET	2.3
1	A	732	GLN	2.2

6.2 Non-standard residues in protein, DNA, RNA chains [i](#)

There are no non-standard protein/DNA/RNA residues in this entry.

6.3 Carbohydrates [i](#)

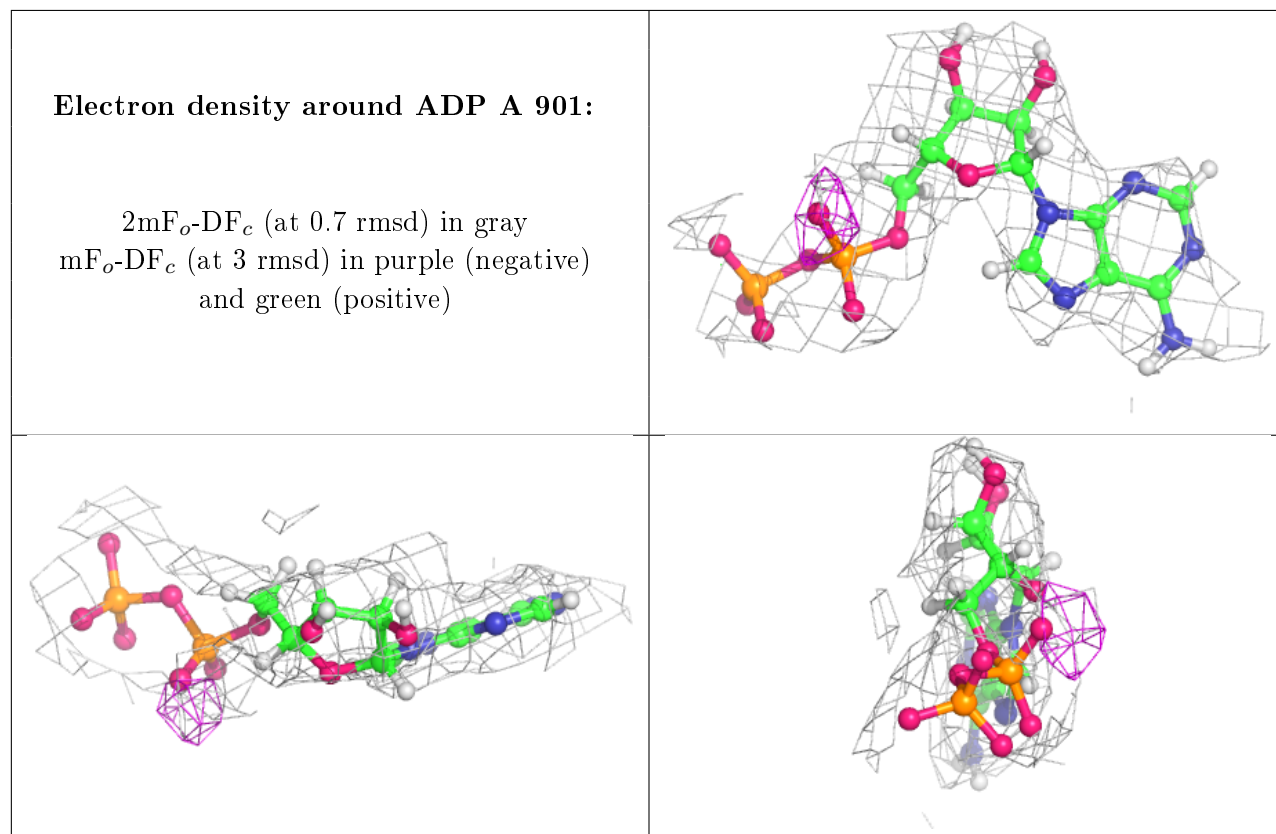
There are no carbohydrates in this entry.

6.4 Ligands [i](#)

In the following table, the Atoms column lists the number of modelled atoms in the group and the number defined in the chemical component dictionary. The B-factors column lists the minimum, median, 95th percentile and maximum values of B factors of atoms in the group. The column labelled ‘Q< 0.9’ lists the number of atoms with occupancy less than 0.9.

Mol	Type	Chain	Res	Atoms	RSCC	RSR	B-factors(\AA^2)	Q<0.9
4	PO4	A	906	5/5	0.67	0.64	149,155,157,157	0
4	PO4	A	905	5/5	0.69	0.51	201,203,203,205	0
3	ALF	A	902	5/5	0.83	0.25	102,143,149,152	0
2	ADP	A	901	27/27	0.91	0.19	52,125,156,156	0
4	PO4	A	908	5/5	0.92	0.17	103,103,103,103	0
4	PO4	A	904	5/5	0.92	0.15	81,90,98,100	0
4	PO4	A	907	5/5	0.93	0.15	82,89,92,95	0
4	PO4	A	903	5/5	0.97	0.18	55,70,75,78	0

The following is a graphical depiction of the model fit to experimental electron density of all instances of the Ligand of Interest. In addition, ligands with molecular weight > 250 and outliers as shown on the geometry validation Tables will also be included. Each fit is shown from different orientation to approximate a three-dimensional view.



6.5 Other polymers [\(i\)](#)

There are no such residues in this entry.