



# Full wwPDB X-ray Structure Validation Report ⓘ

May 14, 2020 – 09:12 pm BST

PDB ID : 6HEW  
Title : Crystal Structure of Ephrin A2 (EphA2) Receptor Protein Kinase with the NVP-BHG712 derivative AT069  
Authors : Kudlinzki, D.; Troester, A.; Witt, K.; Linhard, V.L.; Gande, S.L.; Saxena, K.; Schwalbe, H.  
Deposited on : 2018-08-20  
Resolution : 1.27 Å(reported)

This is a Full wwPDB X-ray Structure Validation Report for a publicly released PDB entry.

We welcome your comments at [validation@mail.wwpdb.org](mailto:validation@mail.wwpdb.org)

A user guide is available at

<https://www.wwpdb.org/validation/2017/XrayValidationReportHelp>

with specific help available everywhere you see the ⓘ symbol.

---

The following versions of software and data (see [references ⓘ](#)) were used in the production of this report:

MolProbity : 4.02b-467  
Mogul : 1.8.5 (274361), CSD as541be (2020)  
Xtriage (Phenix) : 1.13  
EDS : 2.11  
buster-report : 1.1.7 (2018)  
Percentile statistics : 20191225.v01 (using entries in the PDB archive December 25th 2019)  
Refmac : 5.8.0158  
CCP4 : 7.0.044 (Gargrove)  
Ideal geometry (proteins) : Engh & Huber (2001)  
Ideal geometry (DNA, RNA) : Parkinson et al. (1996)  
Validation Pipeline (wwPDB-VP) : 2.11

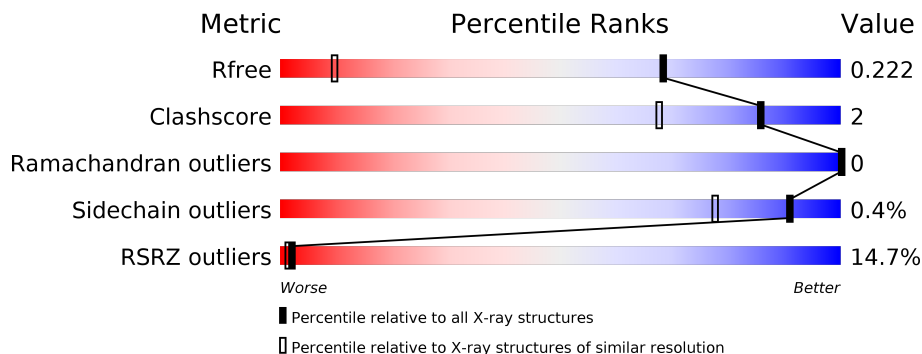
# 1 Overall quality at a glance

The following experimental techniques were used to determine the structure:

*X-RAY DIFFRACTION*

The reported resolution of this entry is 1.27 Å.

Percentile scores (ranging between 0-100) for global validation metrics of the entry are shown in the following graphic. The table shows the number of entries on which the scores are based.



Metric	Whole archive (#Entries)	Similar resolution (#Entries, resolution range(Å))
$R_{free}$	130704	1023 (1.28-1.24)
Clashscore	141614	1060 (1.28-1.24)
Ramachandran outliers	138981	1029 (1.28-1.24)
Sidechain outliers	138945	1028 (1.28-1.24)
RSRZ outliers	127900	1004 (1.28-1.24)

The table below summarises the geometric issues observed across the polymeric chains and their fit to the electron density. The red, orange, yellow and green segments on the lower bar indicate the fraction of residues that contain outliers for  $\geq 3$ , 2, 1 and 0 types of geometric quality criteria respectively. A grey segment represents the fraction of residues that are not modelled. The numeric value for each fraction is indicated below the corresponding segment, with a dot representing fractions  $\leq 5\%$ . The upper red bar (where present) indicates the fraction of residues that have poor fit to the electron density. The numeric value is given above the bar.

Mol	Chain	Length	Quality of chain
1	A	306	

## 2 Entry composition [i](#)

There are 3 unique types of molecules in this entry. The entry contains 2550 atoms, of which 0 are hydrogens and 0 are deuteriums.

In the tables below, the ZeroOcc column contains the number of atoms modelled with zero occupancy, the AltConf column contains the number of residues with at least one atom in alternate conformation and the Trace column contains the number of residues modelled with at most 2 atoms.

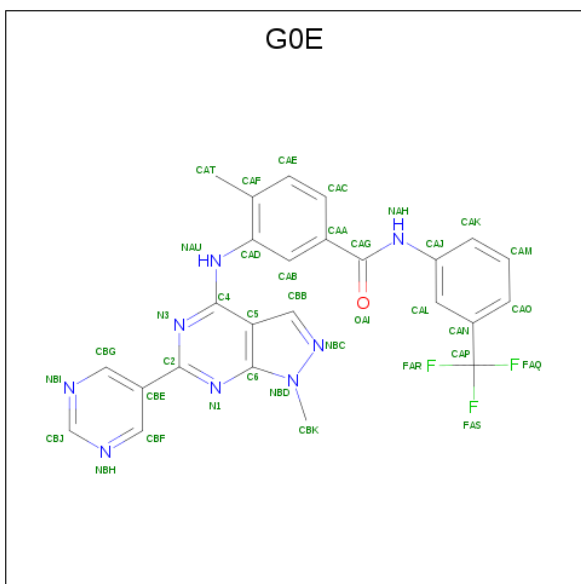
- Molecule 1 is a protein called Ephrin type-A receptor 2.

Mol	Chain	Residues	Atoms					ZeroOcc	AltConf	Trace
			Total	C	N	O	S			
1	A	272	2207	1411	383	394	19	0	5	0

There is a discrepancy between the modelled and reference sequences:

Chain	Residue	Modelled	Actual	Comment	Reference
A	595	GLY	-	expression tag	UNP P29317

- Molecule 2 is 4-methyl-3-[(1-methyl-6-pyrimidin-5-yl-pyrazolo[3,4-d]pyrimidin-4-yl)amino]-{N}-[3-(trifluoromethyl)phenyl]benzamide (three-letter code: G0E) (formula: C<sub>25</sub>H<sub>19</sub>F<sub>3</sub>N<sub>8</sub>O) (labeled as "Ligand of Interest" by author).



Mol	Chain	Residues	Atoms				ZeroOcc	AltConf	
			Total	C	F	N			O
2	A	1	74	50	6	16	2	0	1

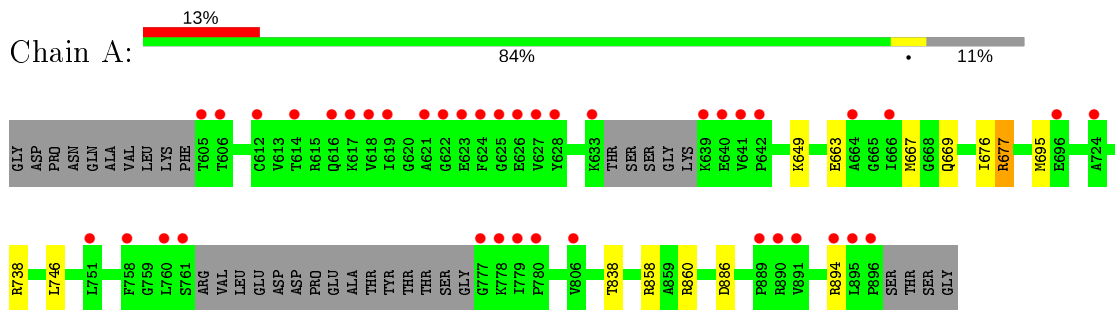
- Molecule 3 is water.

<b>Mol</b>	<b>Chain</b>	<b>Residues</b>	<b>Atoms</b>		<b>ZeroOcc</b>	<b>AltConf</b>
3	A	269	Total 269	O 269	0	0

### 3 Residue-property plots [i](#)

These plots are drawn for all protein, RNA and DNA chains in the entry. The first graphic for a chain summarises the proportions of the various outlier classes displayed in the second graphic. The second graphic shows the sequence view annotated by issues in geometry and electron density. Residues are color-coded according to the number of geometric quality criteria for which they contain at least one outlier: green = 0, yellow = 1, orange = 2 and red = 3 or more. A red dot above a residue indicates a poor fit to the electron density ( $RSRZ > 2$ ). Stretches of 2 or more consecutive residues without any outlier are shown as a green connector. Residues present in the sample, but not in the model, are shown in grey.

- Molecule 1: Ephrin type-A receptor 2



## 4 Data and refinement statistics

Property	Value	Source
Space group	P 1 21 1	Depositor
Cell constants a, b, c, $\alpha$ , $\beta$ , $\gamma$	32.79Å 107.24Å 40.54Å 90.00° 108.61° 90.00°	Depositor
Resolution (Å)	38.42 – 1.27 38.42 – 1.27	Depositor EDS
% Data completeness (in resolution range)	99.3 (38.42-1.27) 99.4 (38.42-1.27)	Depositor EDS
$R_{merge}$	(Not available)	Depositor
$R_{sym}$	(Not available)	Depositor
$\langle I/\sigma(I) \rangle$ <sup>1</sup>	0.97 (at 1.27Å)	Xtrriage
Refinement program	PHENIX (1.10.1_2155: ???)	Depositor
R, $R_{free}$	0.197 , 0.221 0.198 , 0.222	Depositor DCC
$R_{free}$ test set	2089 reflections (3.01%)	wwPDB-VP
Wilson B-factor (Å <sup>2</sup> )	16.8	Xtrriage
Anisotropy	0.201	Xtrriage
Bulk solvent $k_{sol}$ (e/Å <sup>3</sup> ), $B_{sol}$ (Å <sup>2</sup> )	0.35 , 54.8	EDS
L-test for twinning <sup>2</sup>	$\langle  L  \rangle = 0.50$ , $\langle L^2 \rangle = 0.33$	Xtrriage
Estimated twinning fraction	No twinning to report.	Xtrriage
$F_o, F_c$ correlation	0.97	EDS
Total number of atoms	2550	wwPDB-VP
Average B, all atoms (Å <sup>2</sup> )	26.0	wwPDB-VP

Xtrriage's analysis on translational NCS is as follows: *The largest off-origin peak in the Patterson function is 7.93% of the height of the origin peak. No significant pseudotranslation is detected.*

<sup>1</sup>Intensities estimated from amplitudes.

<sup>2</sup>Theoretical values of  $\langle |L| \rangle$ ,  $\langle L^2 \rangle$  for acentric reflections are 0.5, 0.333 respectively for untwinned datasets, and 0.375, 0.2 for perfectly twinned datasets.

## 5 Model quality [i](#)

### 5.1 Standard geometry [i](#)

Bond lengths and bond angles in the following residue types are not validated in this section: G0E

The Z score for a bond length (or angle) is the number of standard deviations the observed value is removed from the expected value. A bond length (or angle) with  $|Z| > 5$  is considered an outlier worth inspection. RMSZ is the root-mean-square of all Z scores of the bond lengths (or angles).

Mol	Chain	Bond lengths		Bond angles	
		RMSZ	# Z  >5	RMSZ	# Z  >5
1	A	0.40	0/2253	0.57	0/3034

Chiral center outliers are detected by calculating the chiral volume of a chiral center and verifying if the center is modelled as a planar moiety or with the opposite hand. A planarity outlier is detected by checking planarity of atoms in a peptide group, atoms in a mainchain group or atoms of a sidechain that are expected to be planar.

Mol	Chain	#Chirality outliers	#Planarity outliers
1	A	0	3

There are no bond length outliers.

There are no bond angle outliers.

There are no chirality outliers.

All (3) planarity outliers are listed below:

Mol	Chain	Res	Type	Group
1	A	677	ARG	Sidechain
1	A	860	ARG	Sidechain
1	A	894	ARG	Sidechain

### 5.2 Too-close contacts [i](#)

In the following table, the Non-H and H(model) columns list the number of non-hydrogen atoms and hydrogen atoms in the chain respectively. The H(added) column lists the number of hydrogen atoms added and optimized by MolProbity. The Clashes column lists the number of clashes within the asymmetric unit, whereas Symm-Clashes lists symmetry related clashes.

Mol	Chain	Non-H	H(model)	H(added)	Clashes	Symm-Clashes
1	A	2207	0	2235	10	0
2	A	74	0	0	0	0
3	A	269	0	0	4	0
All	All	2550	0	2235	10	0

The all-atom clashscore is defined as the number of clashes found per 1000 atoms (including hydrogen atoms). The all-atom clashscore for this structure is 2.

All (10) close contacts within the same asymmetric unit are listed below, sorted by their clash magnitude.

Atom-1	Atom-2	Interatomic distance (Å)	Clash overlap (Å)
1:A:649:LYS:HE3	3:A:1297:HOH:O	1.96	0.64
1:A:676:ILE:HD12	1:A:746:LEU:HD12	1.94	0.50
1:A:649:LYS:NZ	3:A:1108:HOH:O	2.47	0.47
1:A:858:ARG:NH2	3:A:1103:HOH:O	2.35	0.47
1:A:669:GLN:HB2	1:A:669:GLN:HE21	1.58	0.46
1:A:738:ARG:NH1	3:A:1106:HOH:O	2.46	0.45
1:A:838:THR:HG21	1:A:886:ASP:O	2.16	0.44
1:A:649:LYS:HD2	1:A:649:LYS:HA	1.72	0.44
1:A:663:GLU:O	1:A:667:MET:HG3	2.19	0.42
1:A:677:ARG:HG2	1:A:677:ARG:NH1	2.35	0.41

There are no symmetry-related clashes.

## 5.3 Torsion angles [i](#)

### 5.3.1 Protein backbone [i](#)

In the following table, the Percentiles column shows the percent Ramachandran outliers of the chain as a percentile score with respect to all X-ray entries followed by that with respect to entries of similar resolution.

The Analysed column shows the number of residues for which the backbone conformation was analysed, and the total number of residues.

Mol	Chain	Analysed	Favoured	Allowed	Outliers	Percentiles
1	A	271/306 (89%)	268 (99%)	3 (1%)	0	<b>100</b> <b>100</b>

There are no Ramachandran outliers to report.



### 5.3.2 Protein sidechains [i](#)

In the following table, the Percentiles column shows the percent sidechain outliers of the chain as a percentile score with respect to all X-ray entries followed by that with respect to entries of similar resolution.

The Analysed column shows the number of residues for which the sidechain conformation was analysed, and the total number of residues.

Mol	Chain	Analysed	Rotameric	Outliers	Percentiles
1	A	239/262 (91%)	238 (100%)	1 (0%)	91 77

All (1) residues with a non-rotameric sidechain are listed below:

Mol	Chain	Res	Type
1	A	695	MET

Some sidechains can be flipped to improve hydrogen bonding and reduce clashes. All (1) such sidechains are listed below:

Mol	Chain	Res	Type
1	A	669	GLN

### 5.3.3 RNA [i](#)

There are no RNA molecules in this entry.

## 5.4 Non-standard residues in protein, DNA, RNA chains [i](#)

There are no non-standard protein/DNA/RNA residues in this entry.

### 5.5 Carbohydrates [i](#)

There are no carbohydrates in this entry.

### 5.6 Ligand geometry [i](#)

2 ligands are modelled in this entry.

In the following table, the Counts columns list the number of bonds (or angles) for which Mogul statistics could be retrieved, the number of bonds (or angles) that are observed in the model and the number of bonds (or angles) that are defined in the Chemical Component Dictionary. The Link column lists molecule types, if any, to which the group is linked. The Z score for a bond

length (or angle) is the number of standard deviations the observed value is removed from the expected value. A bond length (or angle) with  $|Z| > 2$  is considered an outlier worth inspection. RMSZ is the root-mean-square of all Z scores of the bond lengths (or angles).

Mol	Type	Chain	Res	Link	Bond lengths			Bond angles		
					Counts	RMSZ	# Z  > 2	Counts	RMSZ	# Z  > 2
2	G0E	A	1000[B]	-	39,41,41	2.41	14 (35%)	52,60,60	2.57	14 (26%)
2	G0E	A	1000[A]	-	39,41,41	2.40	14 (35%)	52,60,60	2.47	18 (34%)

In the following table, the Chirals column lists the number of chiral outliers, the number of chiral centers analysed, the number of these observed in the model and the number defined in the Chemical Component Dictionary. Similar counts are reported in the Torsion and Rings columns. '-' means no outliers of that kind were identified.

Mol	Type	Chain	Res	Link	Chirals	Torsions	Rings
2	G0E	A	1000[B]	-	-	4/22/22/22	0/5/5/5
2	G0E	A	1000[A]	-	-	2/22/22/22	0/5/5/5

All (28) bond length outliers are listed below:

Mol	Chain	Res	Type	Atoms	Z	Observed(Å)	Ideal(Å)
2	A	1000[A]	G0E	C4-C5	-6.60	1.36	1.44
2	A	1000[B]	G0E	C4-C5	-6.45	1.36	1.44
2	A	1000[A]	G0E	CAT-CAF	-5.47	1.40	1.51
2	A	1000[B]	G0E	CAT-CAF	-5.44	1.40	1.51
2	A	1000[B]	G0E	CBE-C2	-5.09	1.35	1.48
2	A	1000[A]	G0E	CBE-C2	-5.06	1.35	1.48
2	A	1000[B]	G0E	CAA-CAG	-4.34	1.41	1.50
2	A	1000[A]	G0E	C5-C6	-4.01	1.33	1.43
2	A	1000[A]	G0E	CBB-C5	-3.91	1.32	1.40
2	A	1000[A]	G0E	FAQ-CAP	-3.86	1.18	1.32
2	A	1000[A]	G0E	CAA-CAG	-3.81	1.42	1.50
2	A	1000[B]	G0E	C5-C6	-3.78	1.34	1.43
2	A	1000[B]	G0E	FAQ-CAP	-3.74	1.19	1.32
2	A	1000[A]	G0E	FAS-CAP	-3.66	1.19	1.32
2	A	1000[B]	G0E	FAS-CAP	-3.49	1.20	1.32
2	A	1000[B]	G0E	CBB-C5	-3.44	1.33	1.40
2	A	1000[B]	G0E	CAD-NAU	-3.18	1.31	1.39
2	A	1000[B]	G0E	CAP-CAN	-3.00	1.43	1.49
2	A	1000[A]	G0E	CAP-CAN	-2.88	1.43	1.49
2	A	1000[B]	G0E	CBK-NBD	2.84	1.52	1.47
2	A	1000[A]	G0E	CBK-NBD	2.79	1.52	1.47
2	A	1000[B]	G0E	CAJ-NAH	-2.72	1.36	1.41
2	A	1000[A]	G0E	C4-N3	-2.50	1.29	1.32

*Continued on next page...*

*Continued from previous page...*

Mol	Chain	Res	Type	Atoms	Z	Observed(Å)	Ideal(Å)
2	A	1000[A]	G0E	CAJ-NAH	-2.45	1.36	1.41
2	A	1000[A]	G0E	FAR-CAP	-2.20	1.24	1.32
2	A	1000[A]	G0E	CBJ-NBH	2.18	1.37	1.33
2	A	1000[B]	G0E	CBJ-NBH	2.14	1.37	1.33
2	A	1000[B]	G0E	FAR-CAP	-2.13	1.25	1.32

All (32) bond angle outliers are listed below:

Mol	Chain	Res	Type	Atoms	Z	Observed(°)	Ideal(°)
2	A	1000[A]	G0E	CBB-NBC-NBD	8.46	113.04	104.23
2	A	1000[B]	G0E	CBB-NBC-NBD	7.30	111.83	104.23
2	A	1000[A]	G0E	N1-C2-N3	-6.65	120.89	126.11
2	A	1000[B]	G0E	C5-C4-NAU	6.30	126.66	119.73
2	A	1000[B]	G0E	CBG-CBE-CBF	5.99	124.00	114.66
2	A	1000[B]	G0E	CBB-C5-C6	-5.95	99.70	105.20
2	A	1000[B]	G0E	NAU-C4-N3	-5.80	113.22	118.66
2	A	1000[B]	G0E	N1-C2-N3	-5.47	121.81	126.11
2	A	1000[A]	G0E	CBB-C5-C6	-5.30	100.29	105.20
2	A	1000[B]	G0E	C2-N1-C6	4.70	120.94	115.08
2	A	1000[A]	G0E	C2-N1-C6	4.65	120.89	115.08
2	A	1000[A]	G0E	CBG-CBE-CBF	4.56	121.78	114.66
2	A	1000[B]	G0E	CBG-CBE-C2	-3.83	116.24	121.31
2	A	1000[A]	G0E	CBF-NBH-CBJ	3.76	120.62	115.80
2	A	1000[B]	G0E	CBF-NBH-CBJ	3.45	120.22	115.80
2	A	1000[A]	G0E	C5-C4-NAU	3.07	123.11	119.73
2	A	1000[A]	G0E	NBI-CBJ-NBH	-2.93	120.88	126.61
2	A	1000[A]	G0E	CBG-NBI-CBJ	2.92	119.53	115.80
2	A	1000[A]	G0E	CAJ-CAL-CAN	2.77	122.88	119.85
2	A	1000[A]	G0E	CBK-NBD-C6	2.76	130.13	124.18
2	A	1000[A]	G0E	CAE-CAF-CAD	2.72	120.01	117.44
2	A	1000[B]	G0E	CBE-CBF-NBH	-2.58	116.55	123.48
2	A	1000[A]	G0E	CAB-CAD-CAF	-2.54	116.80	119.77
2	A	1000[B]	G0E	CAD-NAU-C4	-2.47	122.47	129.29
2	A	1000[A]	G0E	CAA-CAB-CAD	2.43	124.17	119.70
2	A	1000[B]	G0E	CAJ-CAL-CAN	2.41	122.48	119.85
2	A	1000[A]	G0E	CAK-CAJ-CAL	-2.40	116.80	119.65
2	A	1000[A]	G0E	CBE-C2-N1	2.27	122.27	116.88
2	A	1000[A]	G0E	CBG-CBE-C2	-2.26	118.32	121.31
2	A	1000[B]	G0E	CBG-NBI-CBJ	2.24	118.66	115.80
2	A	1000[B]	G0E	CBE-CBG-NBI	-2.15	117.72	123.48
2	A	1000[A]	G0E	CAC-CAA-CAB	-2.01	116.86	119.24

There are no chirality outliers.

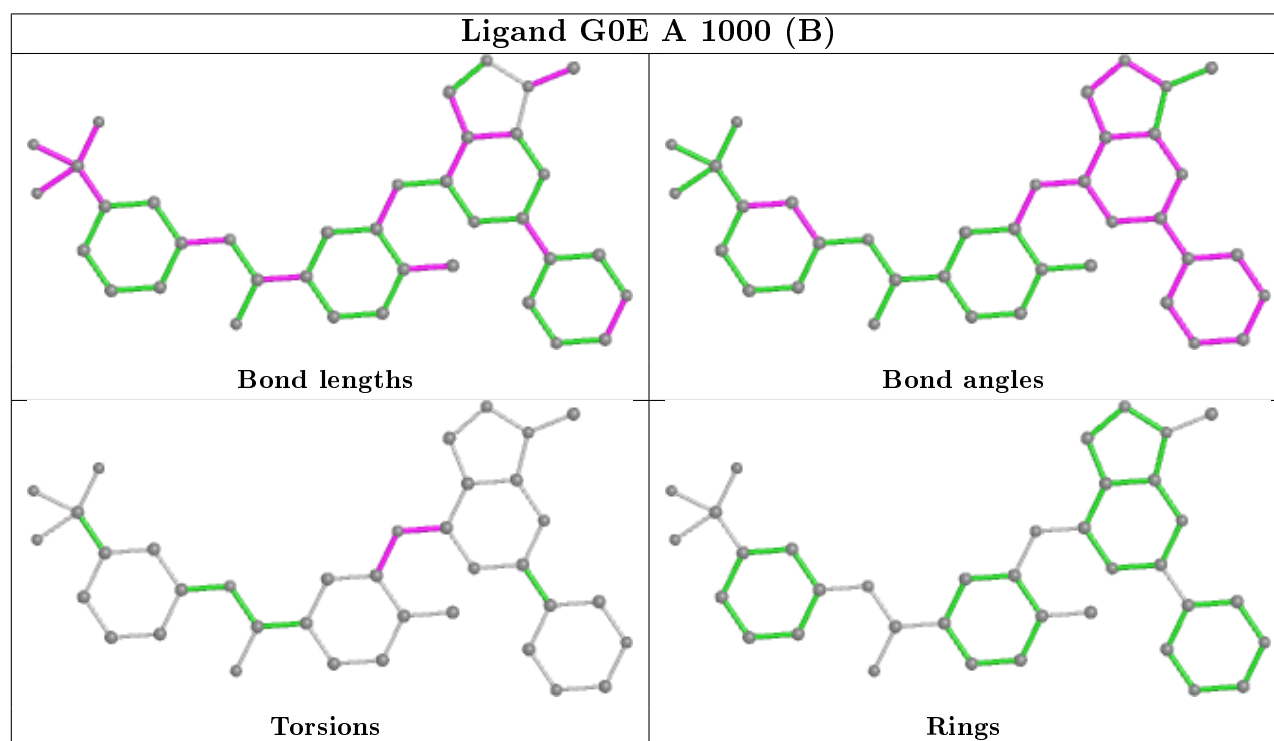
All (6) torsion outliers are listed below:

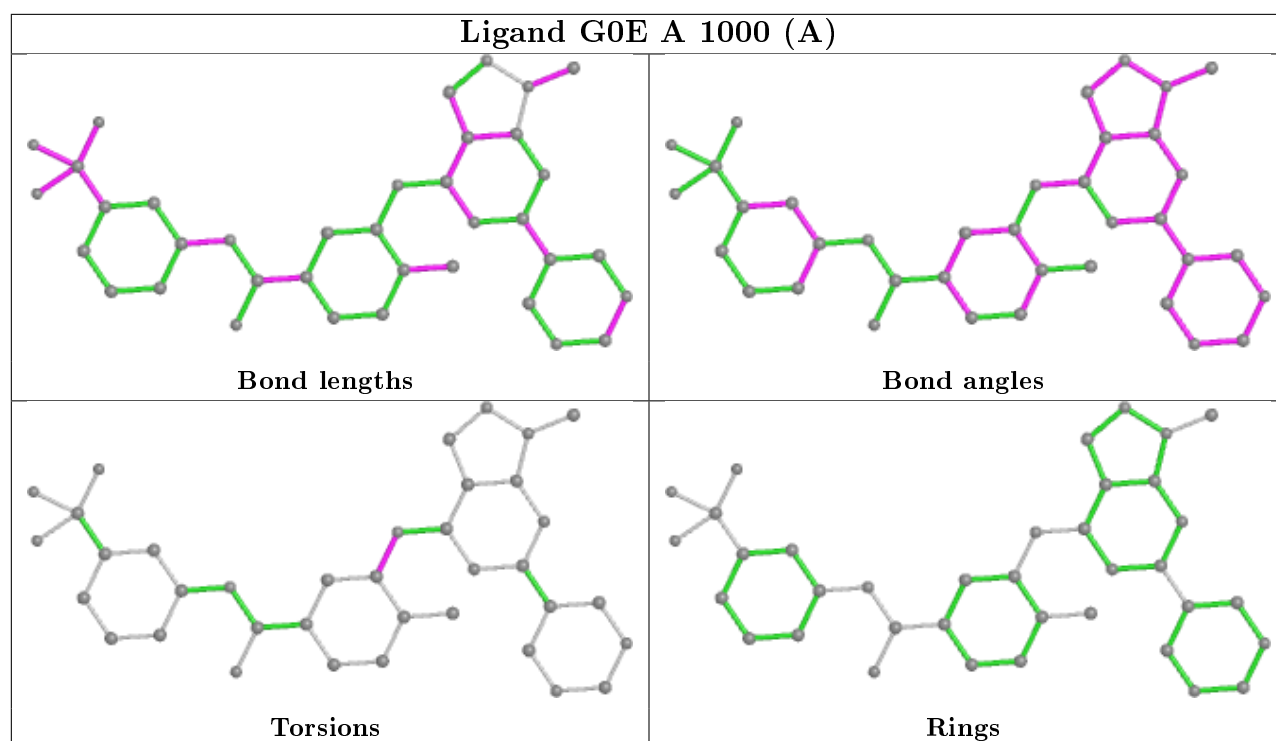
Mol	Chain	Res	Type	Atoms
2	A	1000[B]	G0E	N3-C4-NAU-CAD
2	A	1000[B]	G0E	C5-C4-NAU-CAD
2	A	1000[B]	G0E	CAF-CAD-NAU-C4
2	A	1000[A]	G0E	CAF-CAD-NAU-C4
2	A	1000[B]	G0E	CAB-CAD-NAU-C4
2	A	1000[A]	G0E	CAB-CAD-NAU-C4

There are no ring outliers.

No monomer is involved in short contacts.

The following is a two-dimensional graphical depiction of Mogul quality analysis of bond lengths, bond angles, torsion angles, and ring geometry for all instances of the Ligand of Interest. In addition, ligands with molecular weight > 250 and outliers as shown on the validation Tables will also be included. For torsion angles, if less than 5% of the Mogul distribution of torsion angles is within 10 degrees of the torsion angle in question, then that torsion angle is considered an outlier. Any bond that is central to one or more torsion angles identified as an outlier by Mogul will be highlighted in the graph. For rings, the root-mean-square deviation (RMSD) between the ring in question and similar rings identified by Mogul is calculated over all ring torsion angles. If the average RMSD is greater than 60 degrees and the minimal RMSD between the ring in question and any Mogul-identified rings is also greater than 60 degrees, then that ring is considered an outlier. The outliers are highlighted in purple. The color gray indicates Mogul did not find sufficient equivalents in the CSD to analyse the geometry.





## 5.7 Other polymers [i](#)

There are no such residues in this entry.

## 5.8 Polymer linkage issues [i](#)

There are no chain breaks in this entry.

## 6 Fit of model and data

### 6.1 Protein, DNA and RNA chains

In the following table, the column labelled ‘#RSRZ> 2’ contains the number (and percentage) of RSRZ outliers, followed by percent RSRZ outliers for the chain as percentile scores relative to all X-ray entries and entries of similar resolution. The OWAB column contains the minimum, median, 95<sup>th</sup> percentile and maximum values of the occupancy-weighted average B-factor per residue. The column labelled ‘Q< 0.9’ lists the number of (and percentage) of residues with an average occupancy less than 0.9.

Mol	Chain	Analysed	<RSRZ>	#RSRZ>2	OWAB(Å <sup>2</sup> )	Q<0.9
1	A	272/306 (88%)	1.07	40 (14%) <b>2</b> <b>1</b>	14, 21, 52, 79	0

All (40) RSRZ outliers are listed below:

Mol	Chain	Res	Type	RSRZ
1	A	777	GLY	11.0
1	A	779	ILE	9.9
1	A	760	LEU	7.0
1	A	605	THR	6.3
1	A	618	VAL	6.2
1	A	761	SER	5.1
1	A	896	PRO	4.7
1	A	889	PRO	4.5
1	A	895	LEU	4.3
1	A	890	ARG	4.2
1	A	621	ALA	4.2
1	A	622	GLY	4.1
1	A	778	LYS	3.9
1	A	624	PHE	3.7
1	A	666	ILE	3.3
1	A	633	LYS	3.2
1	A	894	ARG	3.2
1	A	614	THR	2.9
1	A	627	VAL	2.9
1	A	617	LYS	2.8
1	A	616	GLN	2.7
1	A	641	VAL	2.6
1	A	664	ALA	2.5
1	A	625	GLY	2.5
1	A	642	PRO	2.5
1	A	780	PRO	2.4
1	A	696	GLU	2.3

*Continued on next page...*

*Continued from previous page...*

Mol	Chain	Res	Type	RSRZ
1	A	606	THR	2.3
1	A	758	PHE	2.3
1	A	619	ILE	2.2
1	A	891	VAL	2.2
1	A	751	LEU	2.2
1	A	639	LYS	2.2
1	A	806	VAL	2.2
1	A	640	GLU	2.1
1	A	628	TYR	2.1
1	A	626	GLU	2.1
1	A	724	ALA	2.0
1	A	612	CYS	2.0
1	A	623	GLU	2.0

## 6.2 Non-standard residues in protein, DNA, RNA chains [i](#)

There are no non-standard protein/DNA/RNA residues in this entry.

## 6.3 Carbohydrates [i](#)

There are no carbohydrates in this entry.

## 6.4 Ligands [i](#)

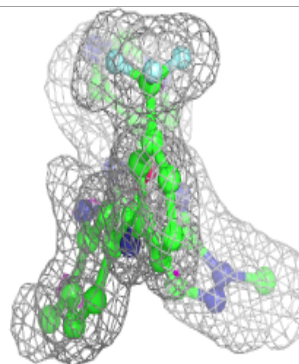
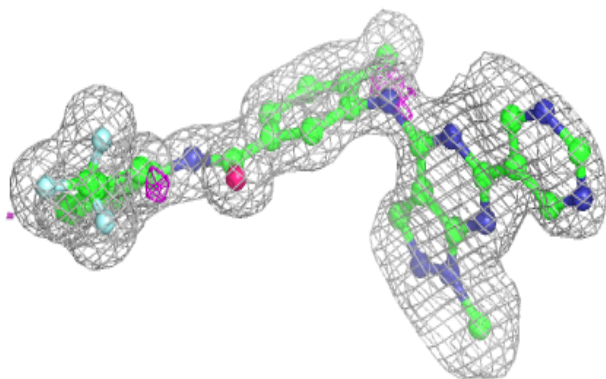
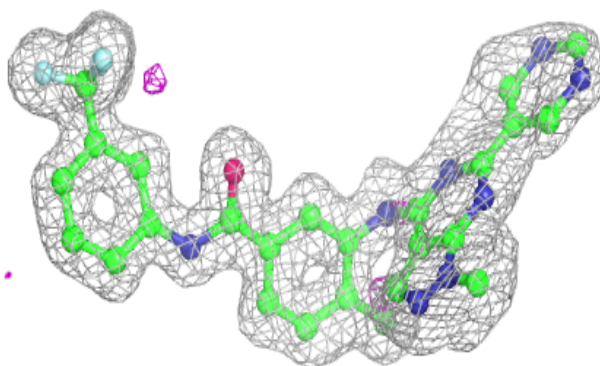
In the following table, the Atoms column lists the number of modelled atoms in the group and the number defined in the chemical component dictionary. The B-factors column lists the minimum, median, 95<sup>th</sup> percentile and maximum values of B factors of atoms in the group. The column labelled 'Q< 0.9' lists the number of atoms with occupancy less than 0.9.

Mol	Type	Chain	Res	Atoms	RSCC	RSR	B-factors( $\text{\AA}^2$ )	Q<0.9
2	G0E	A	1000[B]	37/37	0.90	0.13	16,20,25,25	37
2	G0E	A	1000[A]	37/37	0.90	0.13	16,21,25,25	37

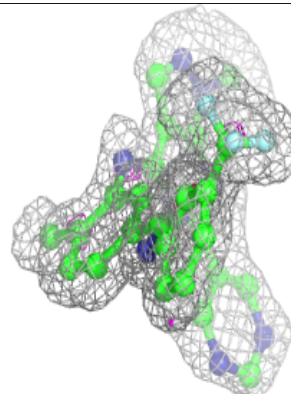
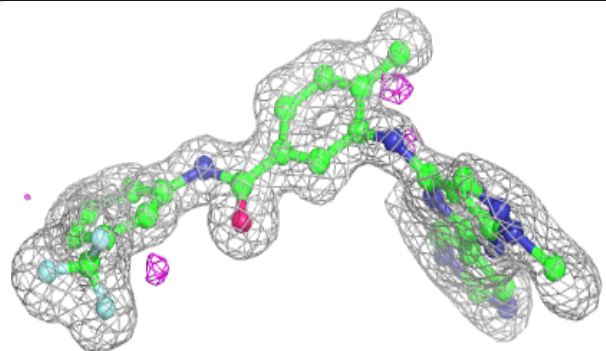
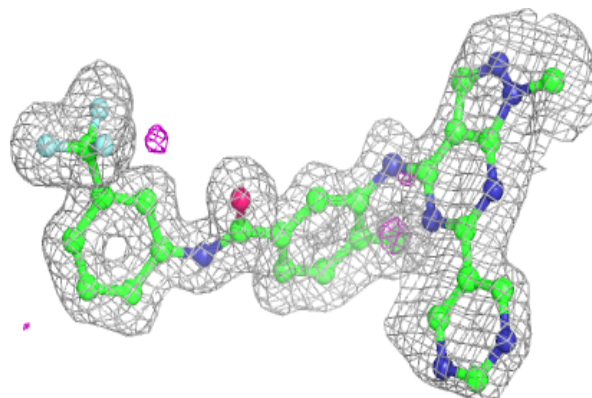
The following is a graphical depiction of the model fit to experimental electron density of all instances of the Ligand of Interest. In addition, ligands with molecular weight > 250 and outliers as shown on the geometry validation Tables will also be included. Each fit is shown from different orientation to approximate a three-dimensional view.

**Electron density around G0E A 1000 (B):**

$2mF_o-DF_c$  (at 0.7 rmsd) in gray  
 $mF_o-DF_c$  (at 3 rmsd) in purple (negative)  
and green (positive)

**Electron density around G0E A 1000 (A):**

$2mF_o-DF_c$  (at 0.7 rmsd) in gray  
 $mF_o-DF_c$  (at 3 rmsd) in purple (negative)  
and green (positive)





## 6.5 Other polymers

There are no such residues in this entry.