



wwPDB X-ray Structure Validation Summary Report ⓘ

Feb 8, 2024 – 08:50 AM EST

PDB ID : 2HG9
Title : Reaction centre from Rhodobacter sphaeroides strain R-26.1 complexed with tetrabrominated phosphatidylcholine
Authors : Roszak, A.W.; Gardiner, A.T.; Isaacs, N.W.; Cogdell, R.J.
Deposited on : 2006-06-26
Resolution : 2.45 Å(reported)

This is a wwPDB X-ray Structure Validation Summary Report for a publicly released PDB entry.

We welcome your comments at validation@mail.wwpdb.org

A user guide is available at

<https://www.wwpdb.org/validation/2017/XrayValidationReportHelp>

with specific help available everywhere you see the ⓘ symbol.

The types of validation reports are described at

<http://www.wwpdb.org/validation/2017/FAQs#types>.

The following versions of software and data (see [references ⓘ](#)) were used in the production of this report:

MolProbity : 4.02b-467
Mogul : 1.8.5 (274361), CSD as541be (2020)
Xtrriage (Phenix) : 1.13
EDS : 2.36
buster-report : 1.1.7 (2018)
Percentile statistics : 20191225.v01 (using entries in the PDB archive December 25th 2019)
Refmac : 5.8.0158
CCP4 : 7.0.044 (Gargrove)
Ideal geometry (proteins) : Engh & Huber (2001)
Ideal geometry (DNA, RNA) : Parkinson et al. (1996)
Validation Pipeline (wwPDB-VP) : 2.36

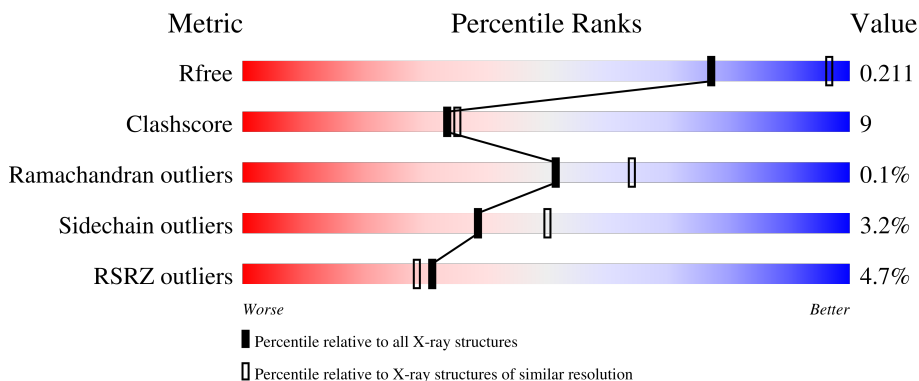
1 Overall quality at a glance

The following experimental techniques were used to determine the structure:

X-RAY DIFFRACTION

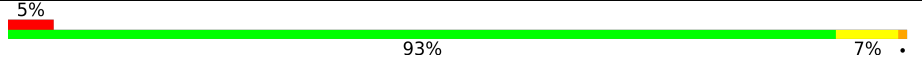
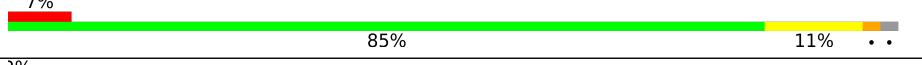
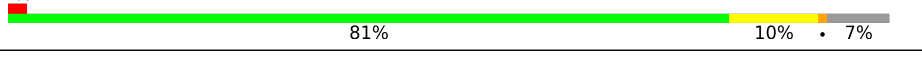
The reported resolution of this entry is 2.45 Å.

Percentile scores (ranging between 0-100) for global validation metrics of the entry are shown in the following graphic. The table shows the number of entries on which the scores are based.



Metric	Whole archive (#Entries)	Similar resolution (#Entries, resolution range(Å))
R_{free}	130704	1544 (2.48-2.44)
Clashscore	141614	1613 (2.48-2.44)
Ramachandran outliers	138981	1598 (2.48-2.44)
Sidechain outliers	138945	1598 (2.48-2.44)
RSRZ outliers	127900	1523 (2.48-2.44)

The table below summarises the geometric issues observed across the polymeric chains and their fit to the electron density. The red, orange, yellow and green segments of the lower bar indicate the fraction of residues that contain outliers for ≥ 3 , 2, 1 and 0 types of geometric quality criteria respectively. A grey segment represents the fraction of residues that are not modelled. The numeric value for each fraction is indicated below the corresponding segment, with a dot representing fractions $\leq 5\%$. The upper red bar (where present) indicates the fraction of residues that have poor fit to the electron density. The numeric value is given above the bar.

Mol	Chain	Length	Quality of chain
1	L	281	
2	M	307	
3	H	260	

The following table lists non-polymeric compounds, carbohydrate monomers and non-standard residues in protein, DNA, RNA chains that are outliers for geometric or electron-density-fit criteria:

Mol	Type	Chain	Res	Chirality	Geometry	Clashes	Electron density
10	CDL	M	800	-	-	-	X
11	PCK	M	802	-	-	X	X
12	LDA	H	903	-	-	-	X
12	LDA	H	904	-	-	-	X
12	LDA	H	908	-	-	X	X
12	LDA	M	902	-	-	-	X
12	LDA	M	920	-	-	-	X
13	GOL	H	708	-	-	-	X
15	PC7	H	801	-	-	-	X
8	U10	L	502	-	-	-	X

2 Entry composition [i](#)

There are 16 unique types of molecules in this entry. The entry contains 7843 atoms, of which 0 are hydrogens and 0 are deuteriums.

In the tables below, the ZeroOcc column contains the number of atoms modelled with zero occupancy, the AltConf column contains the number of residues with at least one atom in alternate conformation and the Trace column contains the number of residues modelled with at most 2 atoms.

- Molecule 1 is a protein called Reaction center protein L chain.

Mol	Chain	Residues	Atoms					ZeroOcc	AltConf	Trace
			Total	C	N	O	S			
1	L	281	2237	1511	356	362	8	0	3	0

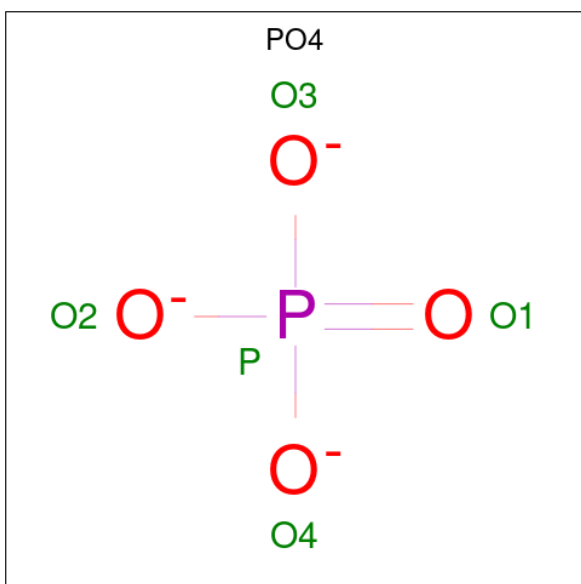
- Molecule 2 is a protein called Reaction center protein M chain.

Mol	Chain	Residues	Atoms					ZeroOcc	AltConf	Trace
			Total	C	N	O	S			
2	M	302	2450	1631	402	406	11	0	12	0

- Molecule 3 is a protein called Reaction center protein H chain.

Mol	Chain	Residues	Atoms					ZeroOcc	AltConf	Trace
			Total	C	N	O	S			
3	H	241	1862	1189	323	339	11	0	9	0

- Molecule 4 is PHOSPHATE ION (three-letter code: PO4) (formula: O₄P).

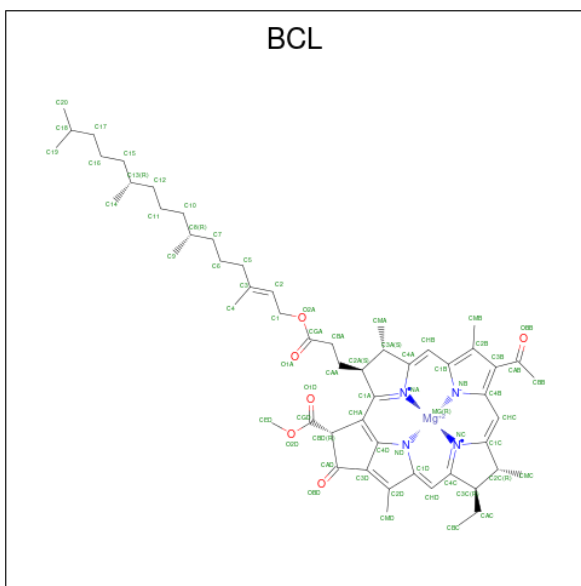


Mol	Chain	Residues	Atoms	ZeroOcc	AltConf
4	L	1	Total O P 5 4 1	0	0
4	M	1	Total O P 5 4 1	0	0
4	M	1	Total O P 5 4 1	0	0
4	H	1	Total O P 5 4 1	0	0

- Molecule 5 is CHLORIDE ION (three-letter code: CL) (formula: Cl).

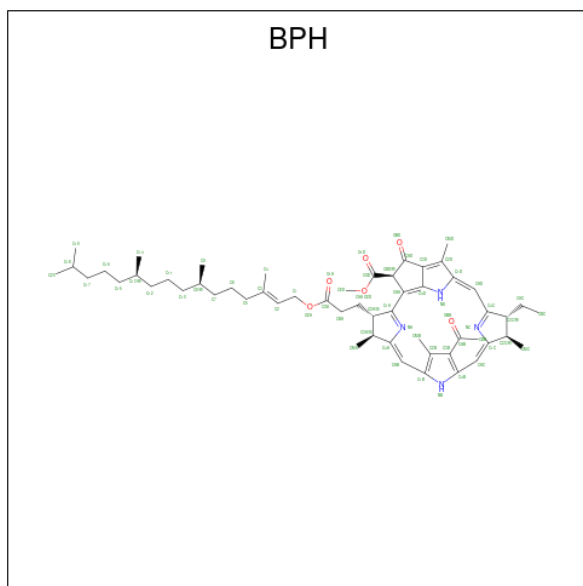
Mol	Chain	Residues	Atoms	ZeroOcc	AltConf
5	L	1	Total Cl 1 1	0	0
5	M	1	Total Cl 1 1	0	0

- Molecule 6 is BACTERIOCHLOROPHYLL A (three-letter code: BCL) (formula: C₅₅H₇₄MgN₄O₆).



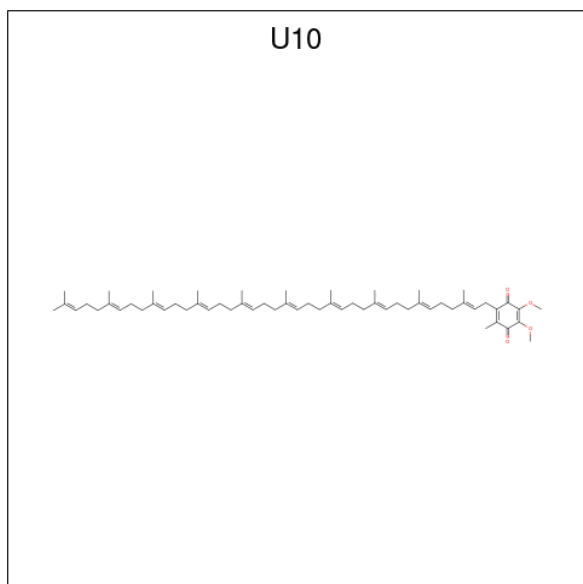
Mol	Chain	Residues	Atoms	ZeroOcc	AltConf
6	L	1	Total C Mg N O 66 55 1 4 6	0	0
6	L	1	Total C Mg N O 66 55 1 4 6	0	0
6	M	1	Total C Mg N O 66 55 1 4 6	0	0
6	M	1	Total C Mg N O 66 55 1 4 6	0	0

- Molecule 7 is BACTERIOPHEOPHYTIN A (three-letter code: BPH) (formula: $C_{55}H_{76}N_4O_6$).



Mol	Chain	Residues	Atoms				ZeroOcc	AltConf
7	L	1	Total	C	N	O	0	0
			65	55	4	6		
7	M	1	Total	C	N	O	0	0
			65	55	4	6		

- Molecule 8 is UBIQUINONE-10 (three-letter code: U10) (formula: $C_{59}H_{90}O_4$).



Mol	Chain	Residues	Atoms			ZeroOcc	AltConf
8	L	1	Total	C	O	0	0
			48	44	4		

Continued on next page...

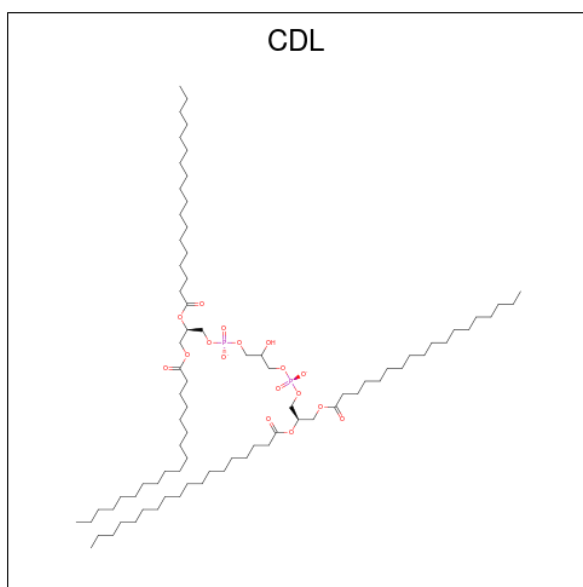
Continued from previous page...

Mol	Chain	Residues	Atoms			ZeroOcc	AltConf
8	M	1	Total	C	O	0	0
			48	44	4		

- Molecule 9 is FE (III) ION (three-letter code: FE) (formula: Fe).

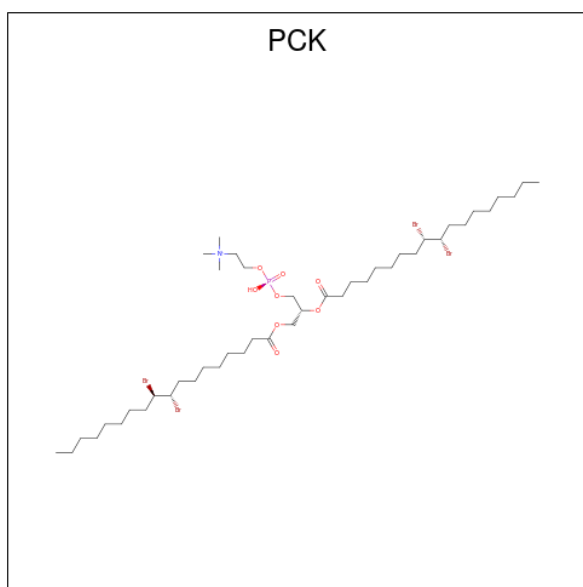
Mol	Chain	Residues	Atoms		ZeroOcc	AltConf
9	M	1	Total	Fe	0	0
			1	1		

- Molecule 10 is CARDIOLIPIN (three-letter code: CDL) (formula: C₈₁H₁₅₆O₁₇P₂).



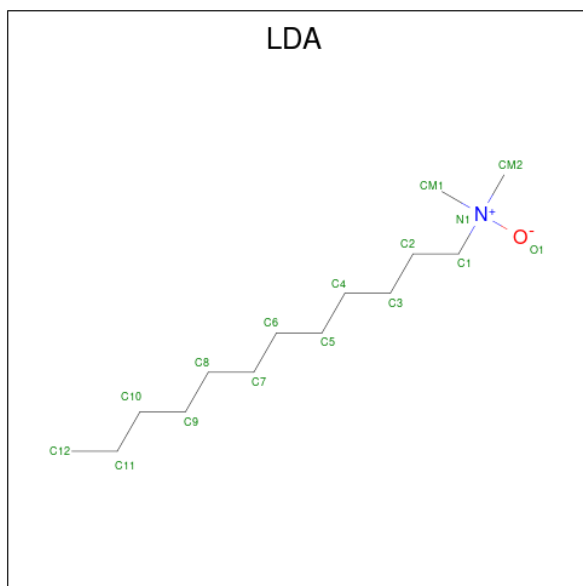
Mol	Chain	Residues	Atoms				ZeroOcc	AltConf
10	M	1	Total	C	O	P	0	0
			81	62	17	2		

- Molecule 11 is (7R,18S,19R)-18,19-DIBROMO-7-[[[(9S,10S)-9,10-DIBROMOOCTADECAN OYL]OXY}-4-HYDROXY-N,N,N-TRIMETHYL-10-OXO-3,5,9-TRIOXA-4-P HOSPHAHE PTACOSAN-1-AMINIUM 4-OXIDE (three-letter code: PCK) (formula: C₄₄H₈₅Br₄NO₈P).



Mol	Chain	Residues	Atoms					ZeroOcc	AltConf	
			Total	Br	C	N	O			P
11	M	1	58	4	44	1	8	1	0	0

- Molecule 12 is LAURYL DIMETHYLAMINE-N-OXIDE (three-letter code: LDA) (formula: $C_{14}H_{31}NO$).



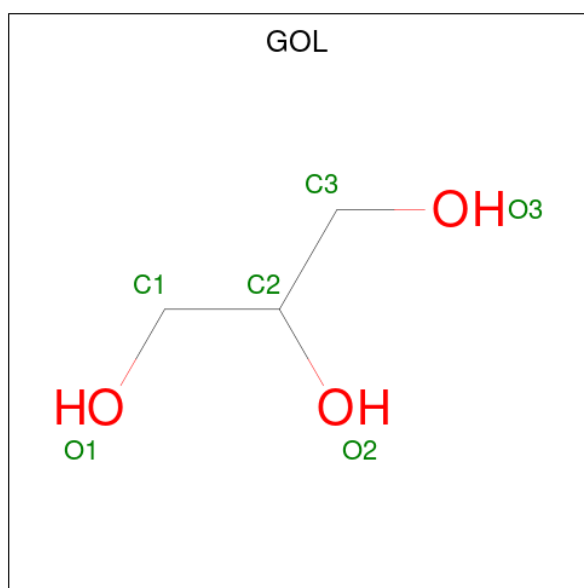
Mol	Chain	Residues	Atoms				ZeroOcc	AltConf
			Total	C	N	O		
12	M	1	16	14	1	1	0	0
12	M	1	16	14	1	1	0	0

Continued on next page...

Continued from previous page...

Mol	Chain	Residues	Atoms				ZeroOcc	AltConf
			Total	C	N	O		
12	M	1	Total 16	C 14	N 1	O 1	0	0
12	H	1	Total 16	C 14	N 1	O 1	0	0
12	H	1	Total 16	C 14	N 1	O 1	0	0
12	H	1	Total 16	C 14	N 1	O 1	0	0
12	H	1	Total 16	C 14	N 1	O 1	0	0

- Molecule 13 is GLYCEROL (three-letter code: GOL) (formula: C₃H₈O₃).

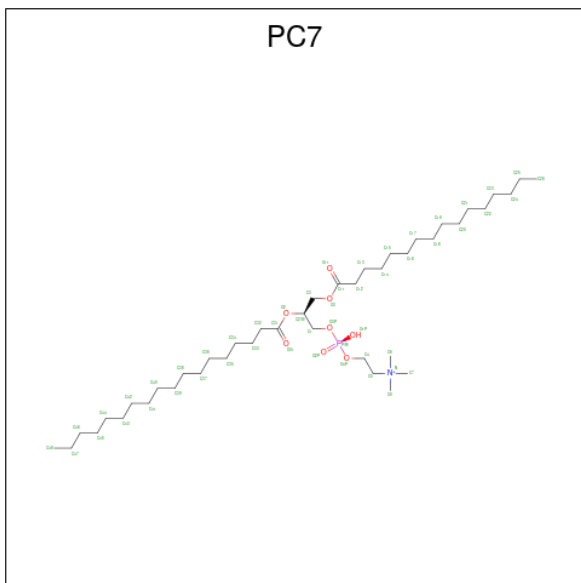


Mol	Chain	Residues	Atoms			ZeroOcc	AltConf
			Total	C	O		
13	M	1	Total 6	C 3	O 3	0	0
13	M	1	Total 6	C 3	O 3	0	0
13	H	1	Total 6	C 3	O 3	0	0
13	H	1	Total 6	C 3	O 3	0	0
13	H	1	Total 6	C 3	O 3	0	0
13	H	1	Total 6	C 3	O 3	0	0

- Molecule 14 is POTASSIUM ION (three-letter code: K) (formula: K).

Mol	Chain	Residues	Atoms	ZeroOcc	AltConf
14	H	1	Total K 1 1	0	0

- Molecule 15 is (7S)-4-HYDROXY-N,N,N-TRIMETHYL-9-OXO-7-[(PALMITOYLOXY)METHYL]-3,5,8-TRIOXA-4-PHOSPHAHEXACOSAN-1-AMINIUM 4-OXIDE (three-letter code: PC7) (formula: C₄₂H₈₅NO₈P).



Mol	Chain	Residues	Atoms	ZeroOcc	AltConf
15	H	1	Total C N O P 52 42 1 8 1	0	0

- Molecule 16 is water.

Mol	Chain	Residues	Atoms	ZeroOcc	AltConf
16	L	100	Total O 100 100	0	0
16	M	133	Total O 133 133	0	0
16	H	208	Total O 208 208	0	0

3 Residue-property plots [i](#)


These plots are drawn for all protein, RNA, DNA and oligosaccharide chains in the entry. The first graphic for a chain summarises the proportions of the various outlier classes displayed in the second graphic. The second graphic shows the sequence view annotated by issues in geometry and electron density. Residues are color-coded according to the number of geometric quality criteria for which they contain at least one outlier: green = 0, yellow = 1, orange = 2 and red = 3 or more. A red dot above a residue indicates a poor fit to the electron density ($RSRZ > 2$). Stretches of 2 or more consecutive residues without any outlier are shown as a green connector. Residues present in the sample, but not in the model, are shown in grey.

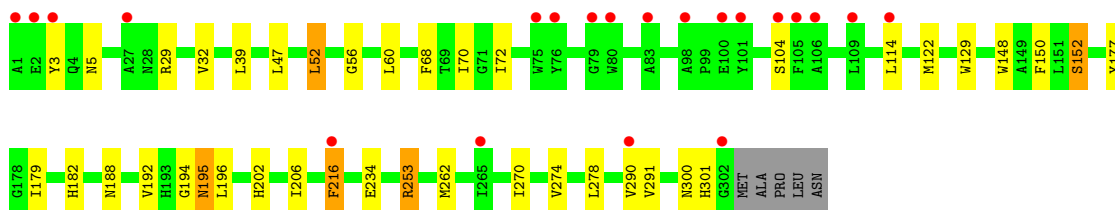
- Molecule 1: Reaction center protein L chain

Chain L: 




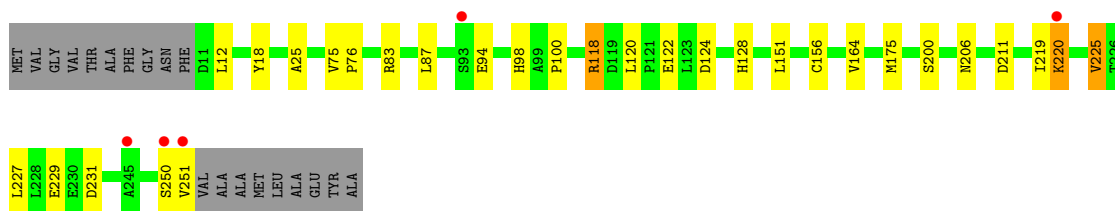
- Molecule 2: Reaction center protein M chain

Chain M: 



- Molecule 3: Reaction center protein H chain

Chain H: 



4 Data and refinement statistics

Property	Value	Source
Space group	P 31 2 1	Depositor
Cell constants a, b, c, α , β , γ	139.55Å 139.55Å 184.61Å 90.00° 90.00° 120.00°	Depositor
Resolution (Å)	39.36 – 2.45 39.36 – 2.45	Depositor EDS
% Data completeness (in resolution range)	98.0 (39.36-2.45) 98.0 (39.36-2.45)	Depositor EDS
R_{merge}	0.07	Depositor
R_{sym}	(Not available)	Depositor
$\langle I/\sigma(I) \rangle$ ¹	3.30 (at 2.45Å)	Xtrriage
Refinement program	REFMAC 5.2.0019	Depositor
R, R_{free}	0.179 , 0.209 0.183 , 0.211	Depositor DCC
R_{free} test set	3709 reflections (4.93%)	wwPDB-VP
Wilson B-factor (Å ²)	49.9	Xtrriage
Anisotropy	0.036	Xtrriage
Bulk solvent k_{sol} (e/Å ³), B_{sol} (Å ²)	0.33 , 83.3	EDS
L-test for twinning ²	$\langle L \rangle = 0.50$, $\langle L^2 \rangle = 0.33$	Xtrriage
Estimated twinning fraction	0.017 for -h,-k,l	Xtrriage
F_o, F_c correlation	0.95	EDS
Total number of atoms	7843	wwPDB-VP
Average B, all atoms (Å ²)	55.0	wwPDB-VP

Xtrriage's analysis on translational NCS is as follows: *The largest off-origin peak in the Patterson function is 2.64% of the height of the origin peak. No significant pseudotranslation is detected.*

¹Intensities estimated from amplitudes.

²Theoretical values of $\langle |L| \rangle$, $\langle L^2 \rangle$ for acentric reflections are 0.5, 0.333 respectively for untwinned datasets, and 0.375, 0.2 for perfectly twinned datasets.

5 Model quality i

5.1 Standard geometry i

Bond lengths and bond angles in the following residue types are not validated in this section: PO4, CDL, U10, FE, PC7, BPH, BCL, LDA, GOL, CL, PCK, K

The Z score for a bond length (or angle) is the number of standard deviations the observed value is removed from the expected value. A bond length (or angle) with $|Z| > 5$ is considered an outlier worth inspection. RMSZ is the root-mean-square of all Z scores of the bond lengths (or angles).

Mol	Chain	Bond lengths		Bond angles	
		RMSZ	# $ Z > 5$	RMSZ	# $ Z > 5$
1	L	0.90	0/2342	0.73	1/3205 (0.0%)
2	M	0.90	1/2601 (0.0%)	0.80	3/3548 (0.1%)
3	H	0.95	3/1961 (0.2%)	0.84	4/2663 (0.2%)
All	All	0.92	4/6904 (0.1%)	0.79	8/9416 (0.1%)

All (4) bond length outliers are listed below:

Mol	Chain	Res	Type	Atoms	Z	Observed(Å)	Ideal(Å)
3	H	94	GLU	CG-CD	6.20	1.61	1.51
3	H	94	GLU	CB-CG	5.59	1.62	1.52
3	H	94	GLU	CD-OE2	5.30	1.31	1.25
2	M	152	SER	CB-OG	5.05	1.48	1.42

The worst 5 of 8 bond angle outliers are listed below:

Mol	Chain	Res	Type	Atoms	Z	Observed(°)	Ideal(°)
3	H	124	ASP	CB-CG-OD1	7.74	125.27	118.30
3	H	124	ASP	CB-CG-OD2	-6.80	112.18	118.30
2	M	253[A]	ARG	NE-CZ-NH2	6.00	123.30	120.30
2	M	253[B]	ARG	NE-CZ-NH2	6.00	123.30	120.30
3	H	83	ARG	NE-CZ-NH2	-5.78	117.41	120.30

There are no chirality outliers.

There are no planarity outliers.

5.2 Too-close contacts i

In the following table, the Non-H and H(model) columns list the number of non-hydrogen atoms and hydrogen atoms in the chain respectively. The H(added) column lists the number of hydrogen

atoms added and optimized by MolProbity. The Clashes column lists the number of clashes within the asymmetric unit, whereas Symm-Clashes lists symmetry-related clashes.

Mol	Chain	Non-H	H(model)	H(added)	Clashes	Symm-Clashes
1	L	2237	0	2202	10	0
2	M	2450	0	2370	38	0
3	H	1862	0	1884	21	0
4	H	5	0	0	0	0
4	L	5	0	0	0	0
4	M	10	0	0	0	0
5	L	1	0	0	0	0
5	M	1	0	0	1	0
6	L	132	0	148	8	0
6	M	132	0	148	20	0
7	L	65	0	75	3	0
7	M	65	0	76	4	0
8	L	48	0	63	4	0
8	M	48	0	63	1	0
9	M	1	0	0	0	0
10	M	81	0	106	2	0
11	M	58	0	80	24	0
12	H	64	0	124	19	0
12	M	48	0	93	9	0
13	H	24	0	32	2	0
13	M	12	0	16	0	0
14	H	1	0	0	0	0
15	H	52	0	84	6	0
16	H	208	0	0	0	0
16	L	100	0	0	0	0
16	M	133	0	0	7	0
All	All	7843	0	7564	128	0

The all-atom clashscore is defined as the number of clashes found per 1000 atoms (including hydrogen atoms). The all-atom clashscore for this structure is 9.

The worst 5 of 128 close contacts within the same asymmetric unit are listed below, sorted by their clash magnitude.

Atom-1	Atom-2	Interatomic distance (Å)	Clash overlap (Å)
12:M:902:LDA:H121	12:H:908:LDA:H121	1.37	1.04
2:M:47[A]:LEU:HD22	11:M:802:PCK:BR4	2.11	1.04
8:L:502:U10:H351	8:L:502:U10:H38	1.41	1.03
11:M:802:PCK:H252	11:M:802:PCK:H211	1.35	1.02
2:M:122:MET:SD	12:M:920:LDA:H122	2.01	1.01

There are no symmetry-related clashes.

5.3 Torsion angles [i](#)

5.3.1 Protein backbone [i](#)

In the following table, the Percentiles column shows the percent Ramachandran outliers of the chain as a percentile score with respect to all X-ray entries followed by that with respect to entries of similar resolution.

The Analysed column shows the number of residues for which the backbone conformation was analysed, and the total number of residues.

Mol	Chain	Analysed	Favoured	Allowed	Outliers	Percentiles	
1	L	282/281 (100%)	275 (98%)	7 (2%)	0	100	100
2	M	312/307 (102%)	300 (96%)	11 (4%)	1 (0%)	41	49
3	H	248/260 (95%)	245 (99%)	3 (1%)	0	100	100
All	All	842/848 (99%)	820 (97%)	21 (2%)	1 (0%)	51	64

All (1) Ramachandran outliers are listed below:

Mol	Chain	Res	Type
2	M	195	ASN

5.3.2 Protein sidechains [i](#)

In the following table, the Percentiles column shows the percent sidechain outliers of the chain as a percentile score with respect to all X-ray entries followed by that with respect to entries of similar resolution.

The Analysed column shows the number of residues for which the sidechain conformation was analysed, and the total number of residues.

Mol	Chain	Analysed	Rotameric	Outliers	Percentiles	
1	L	223/220 (101%)	216 (97%)	7 (3%)	40	52
2	M	248/240 (103%)	239 (96%)	9 (4%)	35	46
3	H	205/208 (99%)	198 (97%)	7 (3%)	37	48
All	All	676/668 (101%)	653 (97%)	23 (3%)	39	48

5 of 23 residues with a non-rotameric sidechain are listed below:

Mol	Chain	Res	Type
2	M	216	PHE
3	H	118[B]	ARG
3	H	118[A]	ARG
3	H	200	SER
1	L	272	TRP

Sometimes sidechains can be flipped to improve hydrogen bonding and reduce clashes. All (3) such sidechains are listed below:

Mol	Chain	Res	Type
2	M	4	GLN
2	M	28	ASN
3	H	68	HIS

5.3.3 RNA [i](#)

There are no RNA molecules in this entry.

5.4 Non-standard residues in protein, DNA, RNA chains [i](#)

There are no non-standard protein/DNA/RNA residues in this entry.

5.5 Carbohydrates [i](#)

There are no monosaccharides in this entry.

5.6 Ligand geometry [i](#)

Of 32 ligands modelled in this entry, 4 are monoatomic - leaving 28 for Mogul analysis.

In the following table, the Counts columns list the number of bonds (or angles) for which Mogul statistics could be retrieved, the number of bonds (or angles) that are observed in the model and the number of bonds (or angles) that are defined in the Chemical Component Dictionary. The Link column lists molecule types, if any, to which the group is linked. The Z score for a bond length (or angle) is the number of standard deviations the observed value is removed from the expected value. A bond length (or angle) with $|Z| > 2$ is considered an outlier worth inspection. RMSZ is the root-mean-square of all Z scores of the bond lengths (or angles).

Mol	Type	Chain	Res	Link	Bond lengths			Bond angles		
					Counts	RMSZ	$\# Z > 2$	Counts	RMSZ	$\# Z > 2$
4	PO4	M	701	-	4,4,4	0.88	0	6,6,6	1.24	0

Mol	Type	Chain	Res	Link	Bond lengths			Bond angles		
					Counts	RMSZ	# Z > 2	Counts	RMSZ	# Z > 2
12	LDA	H	908	-	12,15,15	2.02	1 (8%)	14,17,17	0.97	1 (7%)
13	GOL	M	710	-	5,5,5	0.42	0	5,5,5	0.43	0
6	BCL	L	312	1	64,74,74	1.27	3 (4%)	78,115,115	1.50	15 (19%)
12	LDA	H	901	-	12,15,15	2.02	1 (8%)	14,17,17	0.60	0
11	PCK	M	802	-	57,57,57	0.77	0	63,69,69	1.06	5 (7%)
6	BCL	M	311	2	64,74,74	1.29	3 (4%)	78,115,115	1.54	18 (23%)
6	BCL	L	314	1	64,74,74	1.12	5 (7%)	78,115,115	1.62	17 (21%)
6	BCL	M	313	2	64,74,74	1.34	3 (4%)	78,115,115	1.77	18 (23%)
13	GOL	H	706	-	5,5,5	0.35	0	5,5,5	1.03	0
13	GOL	H	709	-	5,5,5	0.43	0	5,5,5	0.42	0
4	PO4	M	702	-	4,4,4	0.82	0	6,6,6	1.07	0
13	GOL	H	705	-	5,5,5	0.52	0	5,5,5	0.65	0
8	U10	L	502	-	48,48,63	1.10	3 (6%)	58,61,79	1.77	15 (25%)
4	PO4	L	703	-	4,4,4	0.90	0	6,6,6	0.86	0
12	LDA	M	902	-	12,15,15	2.00	1 (8%)	14,17,17	0.81	0
12	LDA	M	907	-	12,15,15	2.04	1 (8%)	14,17,17	0.63	0
12	LDA	H	903	-	12,15,15	2.01	1 (8%)	14,17,17	0.50	0
12	LDA	M	920	-	12,15,15	2.03	1 (8%)	14,17,17	0.61	0
12	LDA	H	904	-	12,15,15	1.98	1 (8%)	14,17,17	0.74	0
4	PO4	H	704	-	4,4,4	0.79	0	6,6,6	0.84	0
8	U10	M	501	-	48,48,63	0.94	2 (4%)	58,61,79	1.58	13 (22%)
10	CDL	M	800	-	80,80,99	1.18	4 (5%)	86,92,111	1.13	6 (6%)
7	BPH	L	402	-	51,70,70	0.92	2 (3%)	52,101,101	1.55	8 (15%)
13	GOL	M	707	-	5,5,5	0.49	0	5,5,5	0.30	0
13	GOL	H	708	-	5,5,5	0.27	0	5,5,5	0.50	0
7	BPH	M	401	-	51,70,70	0.77	0	52,101,101	1.66	12 (23%)
15	PC7	H	801	-	51,51,51	0.84	1 (1%)	57,59,59	0.92	3 (5%)

In the following table, the Chirals column lists the number of chiral outliers, the number of chiral centers analysed, the number of these observed in the model and the number defined in the Chemical Component Dictionary. Similar counts are reported in the Torsion and Rings columns. '-' means no outliers of that kind were identified.

Mol	Type	Chain	Res	Link	Chirals	Torsions	Rings
12	LDA	H	908	-	-	10/13/13/13	-
13	GOL	M	710	-	-	4/4/4/4	-
6	BCL	L	312	1	-	1/37/137/137	-
12	LDA	H	901	-	-	6/13/13/13	-

Continued on next page...

Continued from previous page...

Mol	Type	Chain	Res	Link	Chirals	Torsions	Rings
11	PCK	M	802	-	-	33/67/67/67	-
6	BCL	M	311	2	-	10/37/137/137	-
6	BCL	L	314	1	-	2/37/137/137	-
6	BCL	M	313	2	-	3/37/137/137	-
13	GOL	H	706	-	-	2/4/4/4	-
13	GOL	H	709	-	-	2/4/4/4	-
13	GOL	H	705	-	-	2/4/4/4	-
8	U10	L	502	-	-	11/45/69/87	0/1/1/1
12	LDA	M	902	-	-	2/13/13/13	-
12	LDA	M	907	-	-	6/13/13/13	-
12	LDA	H	903	-	-	9/13/13/13	-
12	LDA	H	904	-	-	5/13/13/13	-
12	LDA	M	920	-	-	7/13/13/13	-
8	U10	M	501	-	-	5/45/69/87	0/1/1/1
10	CDL	M	800	-	-	38/91/91/110	-
7	BPH	L	402	-	-	5/37/105/105	0/5/6/6
13	GOL	M	707	-	-	3/4/4/4	-
13	GOL	H	708	-	-	1/4/4/4	-
7	BPH	M	401	-	-	10/37/105/105	0/5/6/6
15	PC7	H	801	-	-	23/55/55/55	-

The worst 5 of 33 bond length outliers are listed below:

Mol	Chain	Res	Type	Atoms	Z	Observed(Å)	Ideal(Å)
12	H	901	LDA	O1-N1	-6.96	1.25	1.42
12	H	908	LDA	O1-N1	-6.95	1.25	1.42
12	M	907	LDA	O1-N1	-6.94	1.25	1.42
12	H	903	LDA	O1-N1	-6.86	1.26	1.42
12	M	902	LDA	O1-N1	-6.85	1.26	1.42

The worst 5 of 131 bond angle outliers are listed below:

Mol	Chain	Res	Type	Atoms	Z	Observed(°)	Ideal(°)
7	M	401	BPH	O2D-CGD-CBD	5.17	117.55	111.00
7	L	402	BPH	O2D-CGD-CBD	5.05	117.39	111.00
10	M	800	CDL	OA6-CA5-C11	4.95	122.17	111.50
10	M	800	CDL	OB6-CB5-C51	4.48	121.17	111.50
7	L	402	BPH	C1-C2-C3	-4.46	118.32	126.04

There are no chirality outliers.

5 of 200 torsion outliers are listed below:

Mol	Chain	Res	Type	Atoms
7	M	401	BPH	C11-C10-C8-C9
8	L	502	U10	C28-C29-C31-C32
8	L	502	U10	C30-C29-C31-C32
10	M	800	CDL	CA2-OA2-PA1-OA3
10	M	800	CDL	CA2-OA2-PA1-OA4

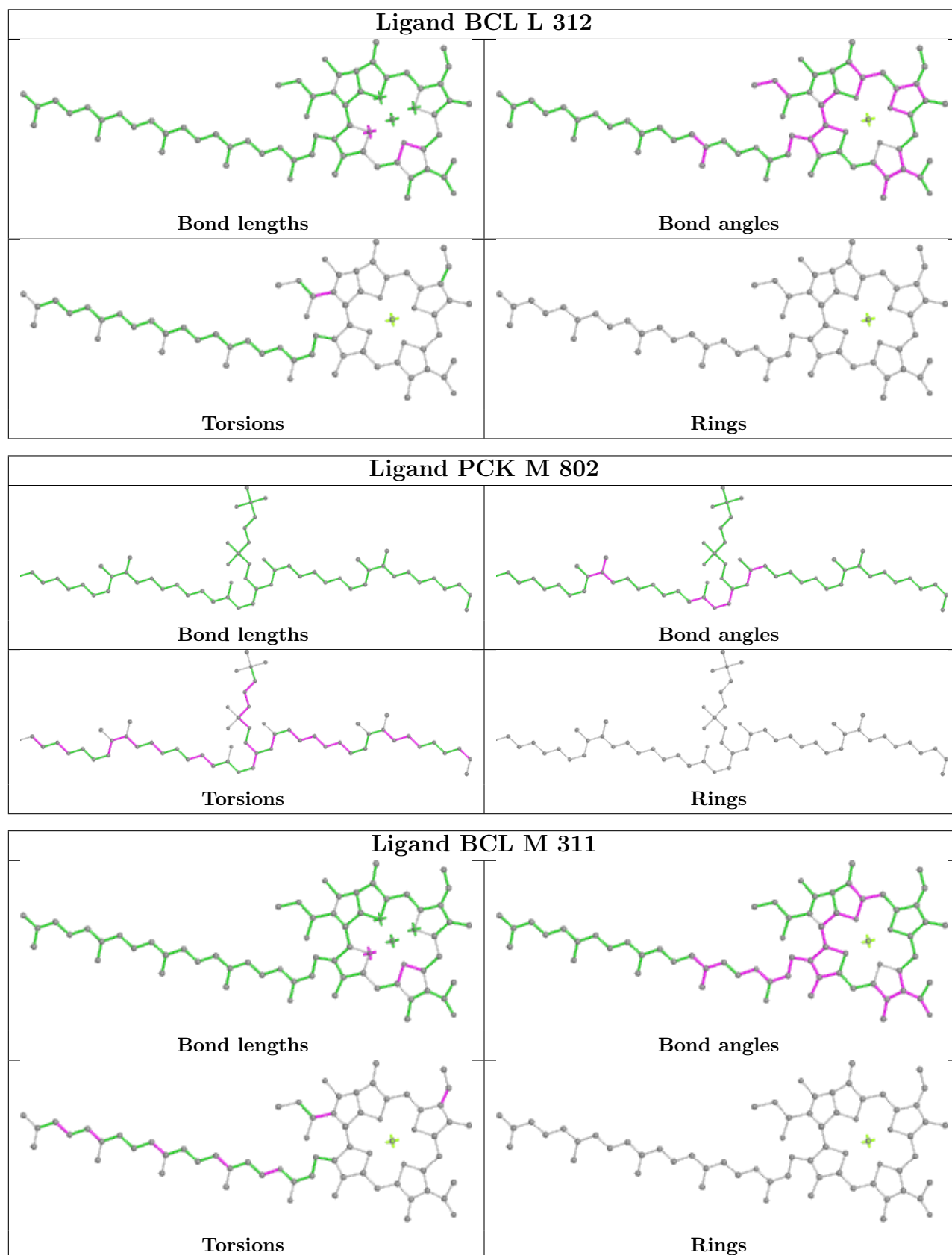
There are no ring outliers.

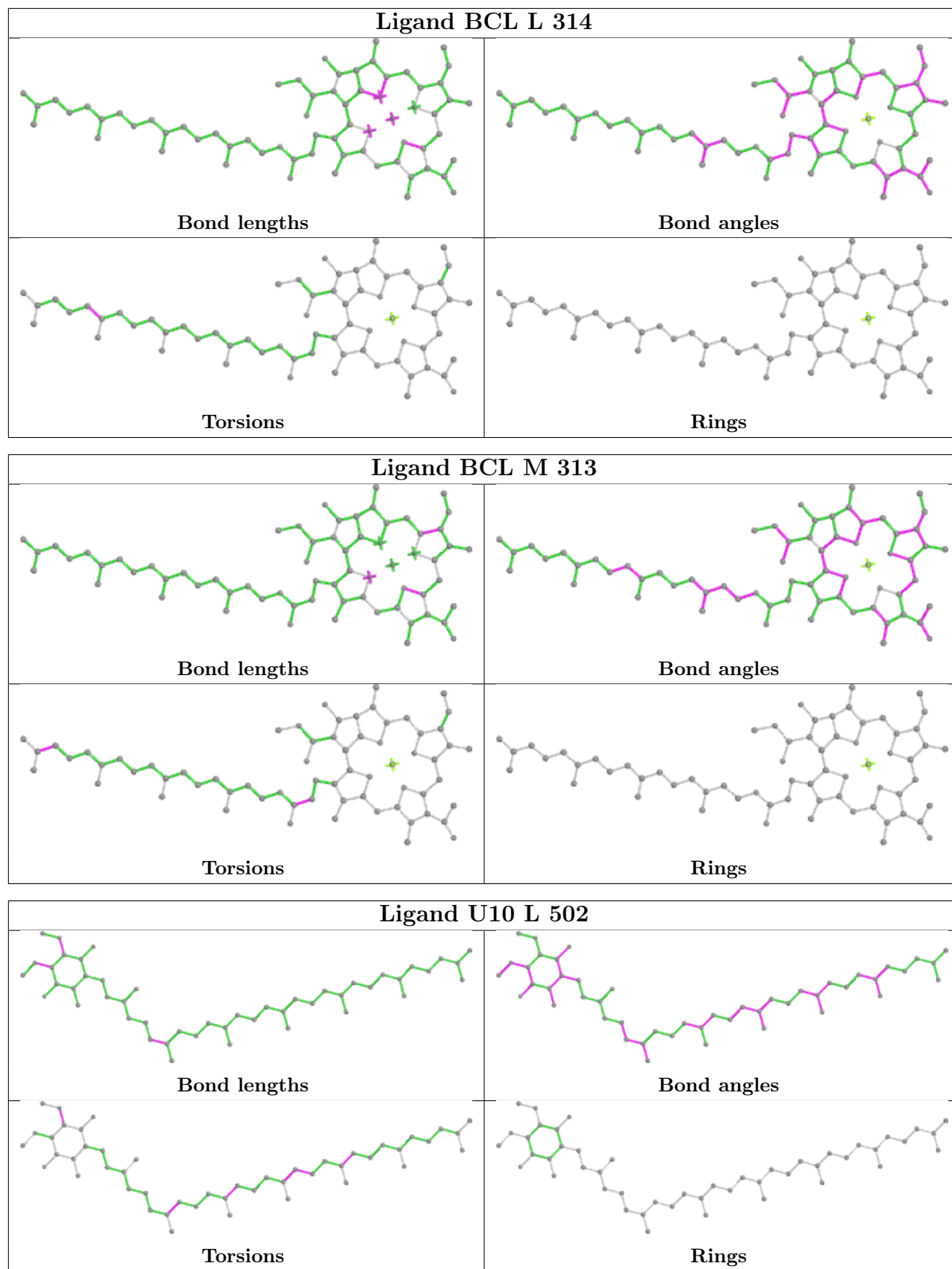
19 monomers are involved in 81 short contacts:

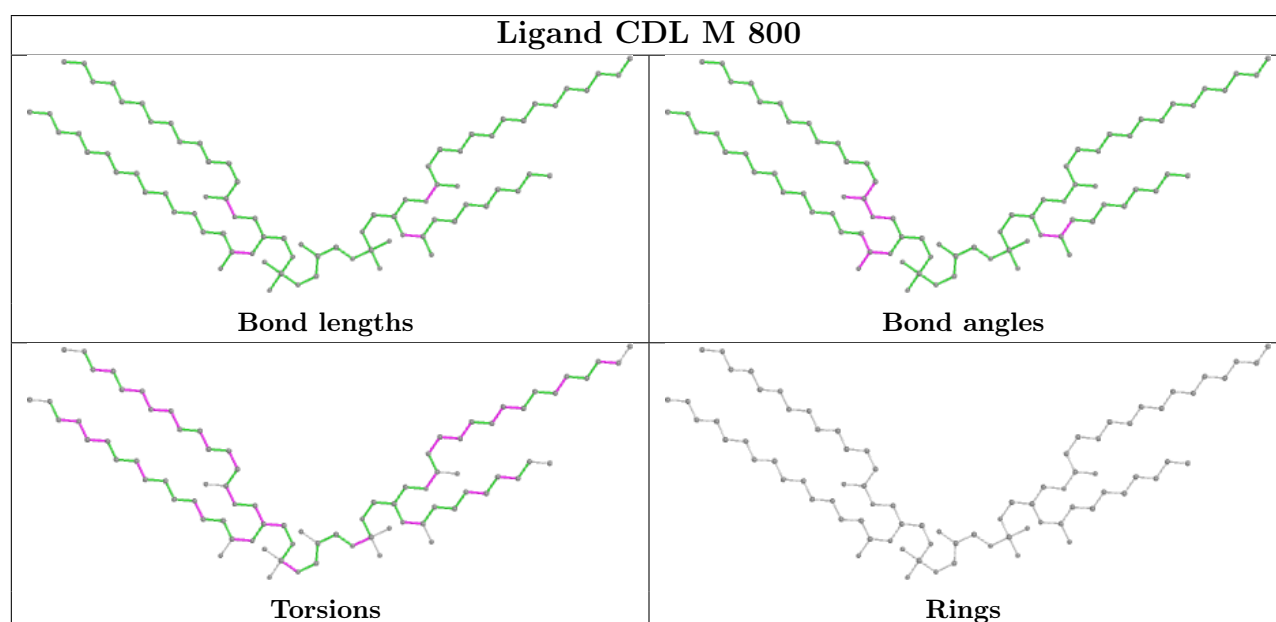
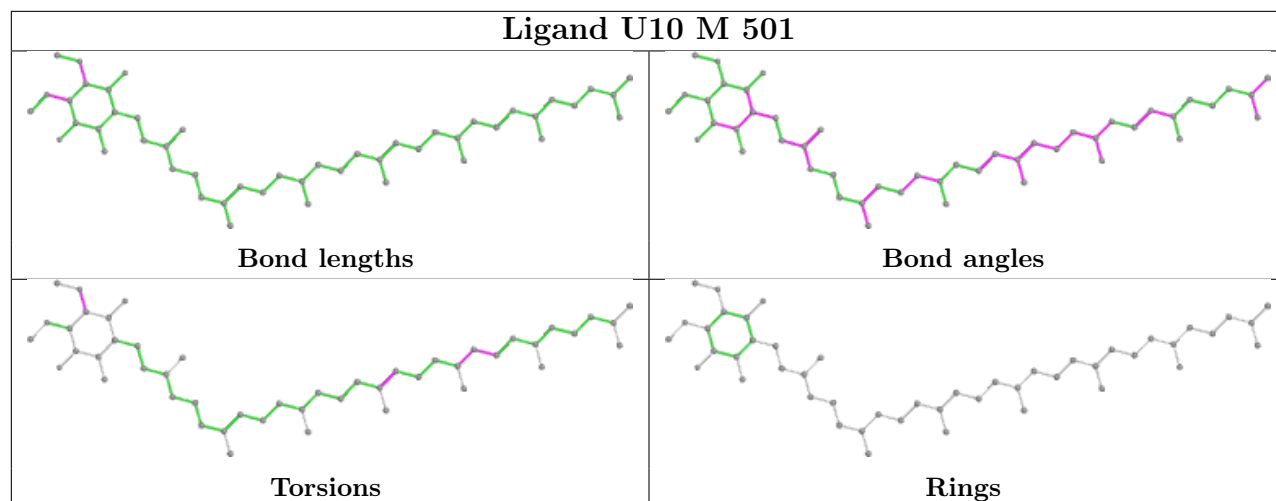
Mol	Chain	Res	Type	Clashes	Symm-Clashes
12	H	908	LDA	10	0
6	L	312	BCL	4	0
12	H	901	LDA	2	0
11	M	802	PCK	24	0
6	M	311	BCL	13	0
6	L	314	BCL	5	0
6	M	313	BCL	7	0
8	L	502	U10	4	0
12	M	902	LDA	5	0
12	M	907	LDA	1	0
12	H	903	LDA	5	0
12	M	920	LDA	3	0
12	H	904	LDA	7	0
8	M	501	U10	1	0
10	M	800	CDL	2	0
7	L	402	BPH	3	0
13	H	708	GOL	2	0
7	M	401	BPH	4	0
15	H	801	PC7	6	0

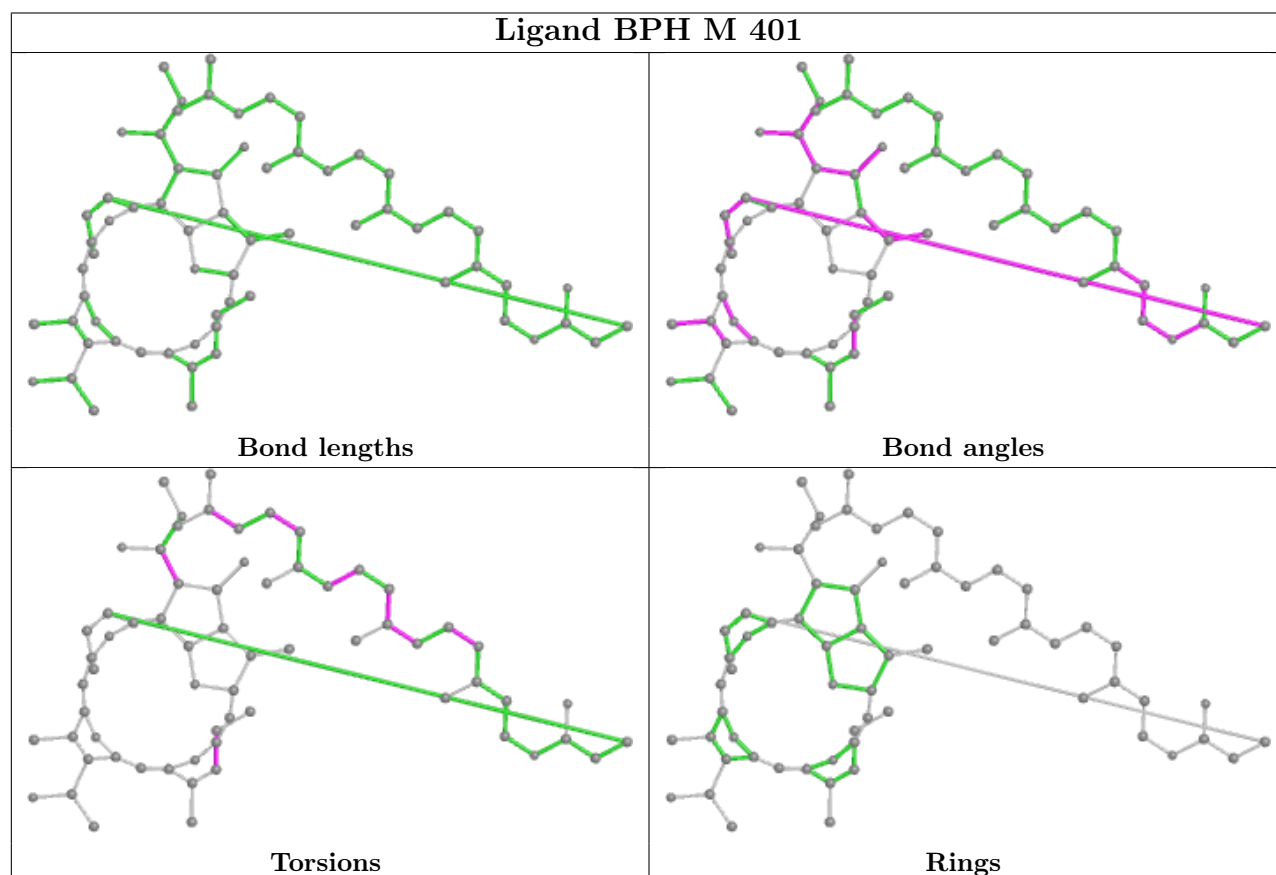
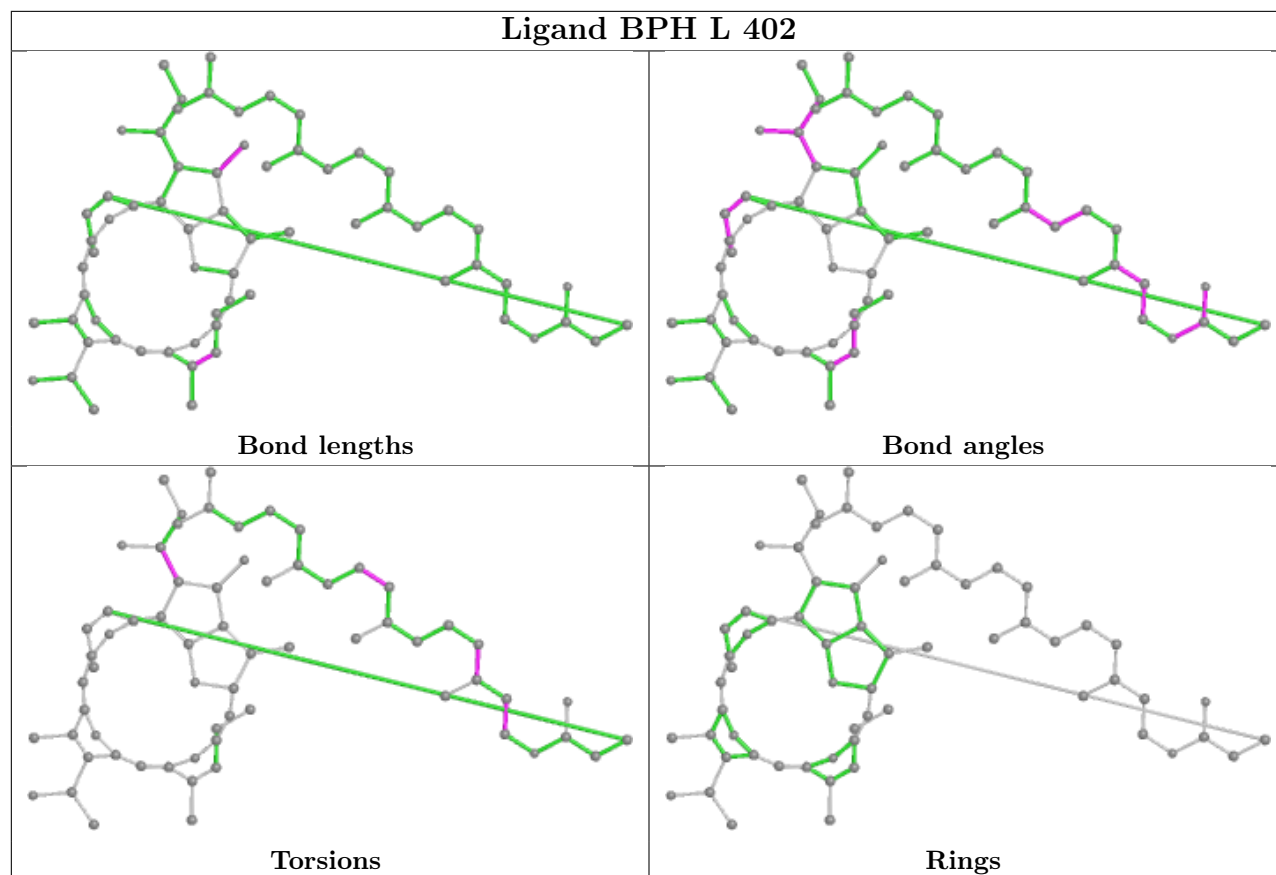
The following is a two-dimensional graphical depiction of Mogul quality analysis of bond lengths, bond angles, torsion angles, and ring geometry for all instances of the Ligand of Interest. In addition, ligands with molecular weight > 250 and outliers as shown on the validation Tables will also be included. For torsion angles, if less than 5% of the Mogul distribution of torsion angles is within 10 degrees of the torsion angle in question, then that torsion angle is considered an outlier. Any bond that is central to one or more torsion angles identified as an outlier by Mogul will be highlighted in the graph. For rings, the root-mean-square deviation (RMSD) between the ring in question and similar rings identified by Mogul is calculated over all ring torsion angles. If the average RMSD is greater than 60 degrees and the minimal RMSD between the ring in question and any Mogul-identified rings is also greater than 60 degrees, then that ring is considered an outlier.

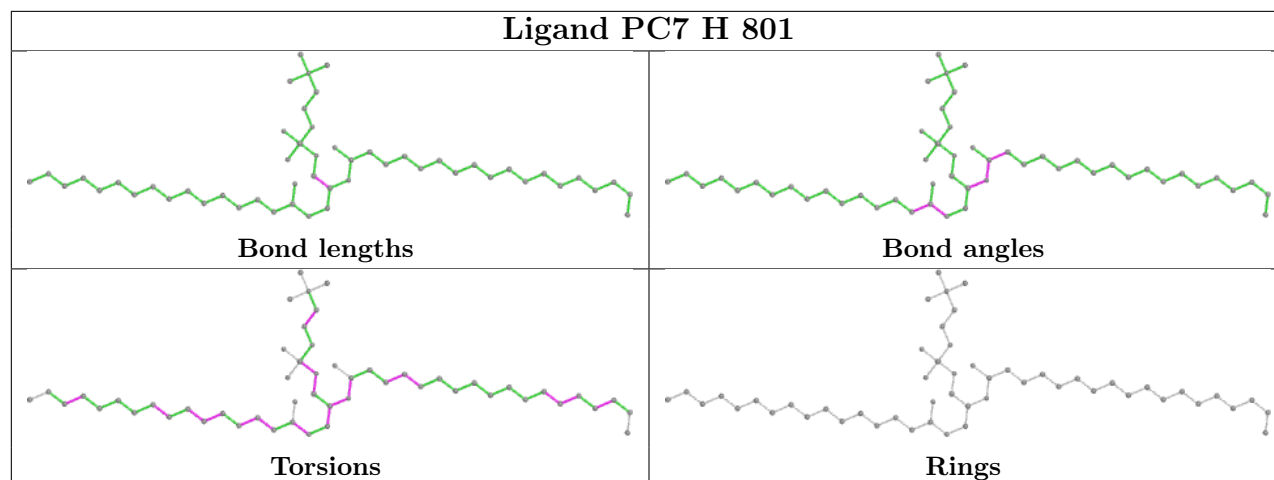
The outliers are highlighted in purple. The color gray indicates Mogul did not find sufficient equivalents in the CSD to analyse the geometry.











5.7 Other polymers [i](#)

There are no such residues in this entry.

5.8 Polymer linkage issues [i](#)

There are no chain breaks in this entry.

6 Fit of model and data [i](#)

6.1 Protein, DNA and RNA chains [i](#)

In the following table, the column labelled ‘#RSRZ> 2’ contains the number (and percentage) of RSRZ outliers, followed by percent RSRZ outliers for the chain as percentile scores relative to all X-ray entries and entries of similar resolution. The OWAB column contains the minimum, median, 95th percentile and maximum values of the occupancy-weighted average B-factor per residue. The column labelled ‘Q< 0.9’ lists the number of (and percentage) of residues with an average occupancy less than 0.9.

Mol	Chain	Analysed	<RSRZ>	#RSRZ>2	OWAB(Å ²)	Q<0.9
1	L	281/281 (100%)	-0.00	13 (4%) 32 30	43, 53, 66, 82	0
2	M	302/307 (98%)	0.18	21 (6%) 16 13	43, 53, 65, 89	0
3	H	241/260 (92%)	-0.24	5 (2%) 63 60	44, 53, 61, 95	0
All	All	824/848 (97%)	-0.00	39 (4%) 31 29	43, 53, 65, 95	0

The worst 5 of 39 RSRZ outliers are listed below:

Mol	Chain	Res	Type	RSRZ
2	M	1	ALA	10.3
3	H	251	VAL	8.6
2	M	2[A]	GLU	6.1
3	H	250	SER	6.0
1	L	277	GLY	4.7

6.2 Non-standard residues in protein, DNA, RNA chains [i](#)

There are no non-standard protein/DNA/RNA residues in this entry.

6.3 Carbohydrates [i](#)

There are no monosaccharides in this entry.

6.4 Ligands [i](#)

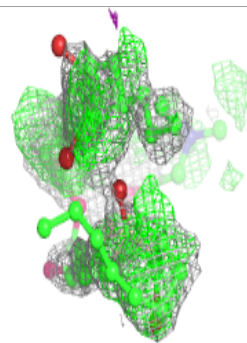
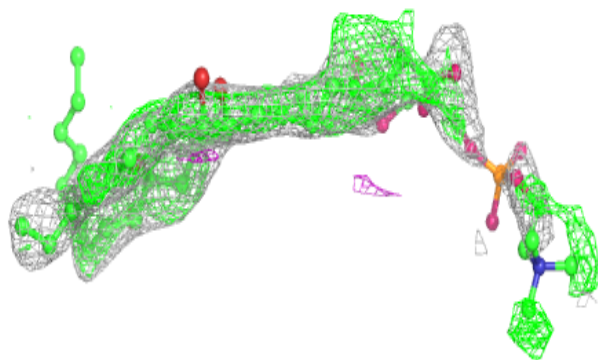
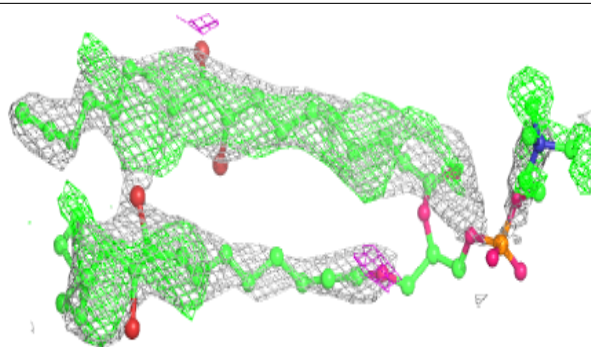
In the following table, the Atoms column lists the number of modelled atoms in the group and the number defined in the chemical component dictionary. The B-factors column lists the minimum, median, 95th percentile and maximum values of B factors of atoms in the group. The column labelled ‘Q< 0.9’ lists the number of atoms with occupancy less than 0.9.

Mol	Type	Chain	Res	Atoms	RSCC	RSR	B-factors(\AA^2)	Q<0.9
11	PCK	M	802	58/58	0.22	0.74	60,69,82,84	58
12	LDA	H	904	16/16	0.37	0.63	53,54,58,58	16
15	PC7	H	801	52/52	0.44	0.68	24,60,69,69	52
12	LDA	H	908	16/16	0.45	0.61	45,51,61,61	16
12	LDA	H	903	16/16	0.47	0.44	56,61,64,65	16
12	LDA	M	920	16/16	0.62	0.80	42,46,59,59	16
13	GOL	M	710	6/6	0.63	0.33	55,57,58,60	6
10	CDL	M	800	81/100	0.63	0.51	43,67,79,82	81
12	LDA	M	907	16/16	0.66	0.39	56,59,65,66	16
12	LDA	M	902	16/16	0.72	0.62	59,64,67,68	16
13	GOL	H	708	6/6	0.72	1.10	47,49,50,52	6
5	CL	L	712	1/1	0.72	0.35	66,66,66,66	1
8	U10	L	502	48/63	0.73	0.55	40,55,73,75	48
4	PO4	L	703	5/5	0.73	0.33	61,61,62,65	5
13	GOL	M	707	6/6	0.75	0.23	49,50,52,52	6
12	LDA	H	901	16/16	0.85	0.29	61,63,66,68	16
13	GOL	H	706	6/6	0.87	0.26	71,72,73,74	6
4	PO4	H	704	5/5	0.87	0.30	71,73,74,75	5
13	GOL	H	705	6/6	0.87	0.41	48,58,59,61	6
5	CL	M	711	1/1	0.88	0.24	74,74,74,74	1
13	GOL	H	709	6/6	0.88	0.19	55,56,57,58	6
7	BPH	M	401	65/65	0.88	0.23	45,55,106,107	0
8	U10	M	501	48/63	0.89	0.24	49,61,81,84	0
14	K	H	700	1/1	0.93	0.11	57,57,57,57	0
4	PO4	M	702	5/5	0.94	0.12	53,53,54,55	5
6	BCL	M	311	66/66	0.94	0.22	46,54,119,120	0
6	BCL	L	312	66/66	0.96	0.16	42,50,63,67	0
4	PO4	M	701	5/5	0.96	0.14	57,58,62,62	5
6	BCL	M	313	66/66	0.96	0.19	42,50,79,87	0
7	BPH	L	402	65/65	0.96	0.15	40,52,60,61	0
6	BCL	L	314	66/66	0.97	0.15	41,48,67,71	0
9	FE	M	500	1/1	0.99	0.17	51,51,51,51	0

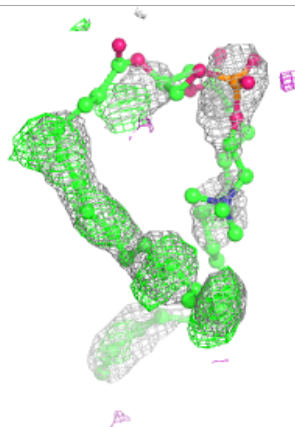
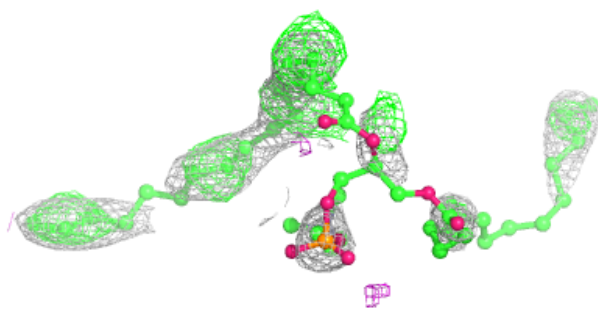
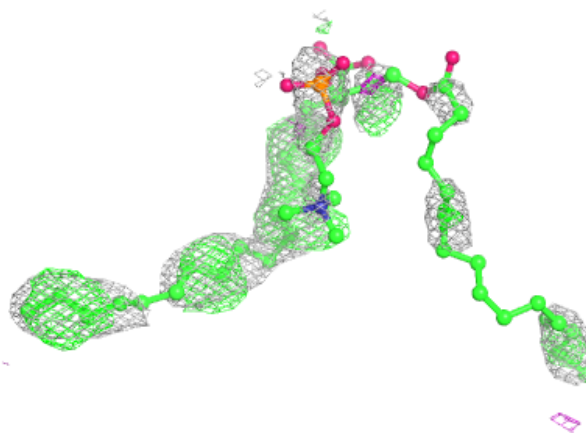
The following is a graphical depiction of the model fit to experimental electron density of all instances of the Ligand of Interest. In addition, ligands with molecular weight > 250 and outliers as shown on the geometry validation Tables will also be included. Each fit is shown from different orientation to approximate a three-dimensional view.

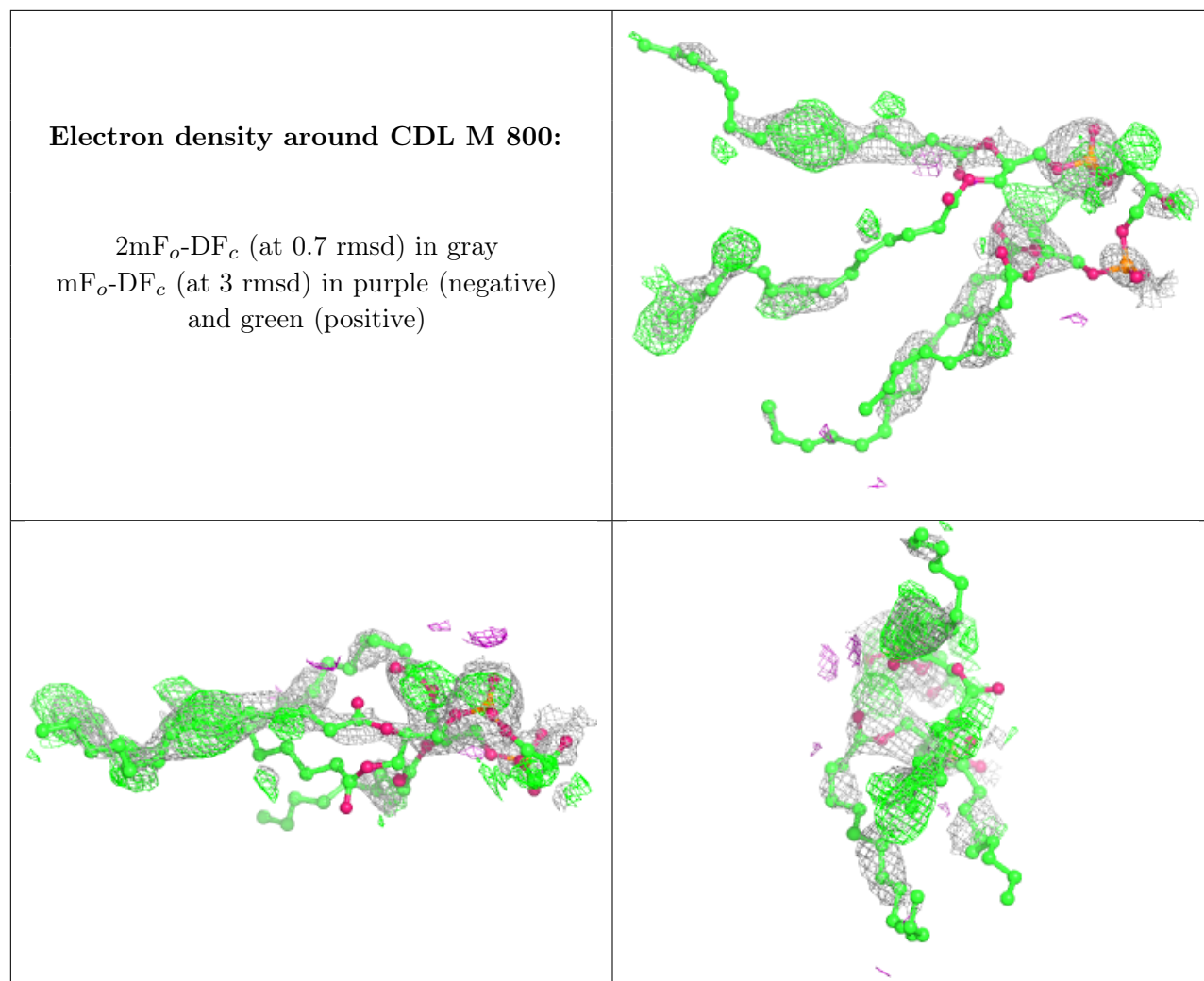
Electron density around PCK M 802:

$2mF_o-DF_c$ (at 0.7 rmsd) in gray
 mF_o-DF_c (at 3 rmsd) in purple (negative)
and green (positive)

**Electron density around PC7 H 801:**

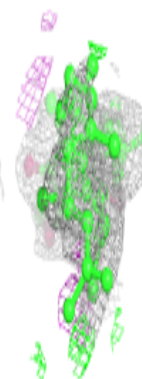
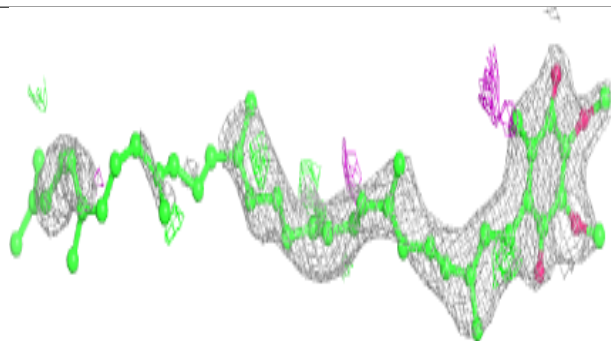
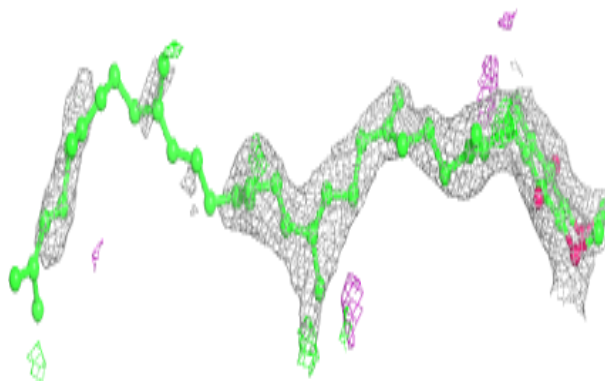
$2mF_o-DF_c$ (at 0.7 rmsd) in gray
 mF_o-DF_c (at 3 rmsd) in purple (negative)
and green (positive)



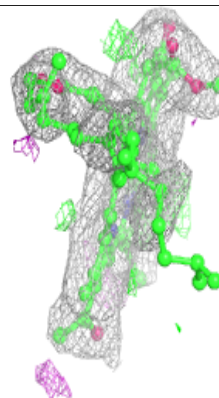
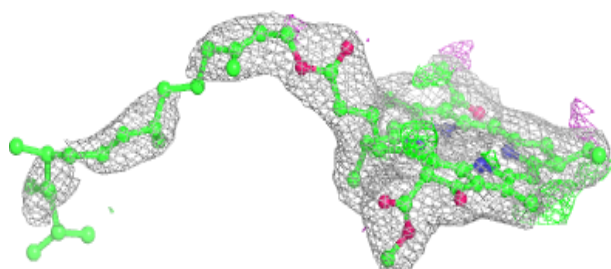
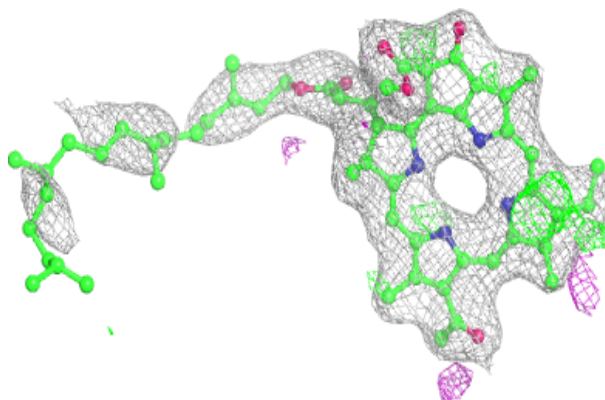


Electron density around U10 L 502:

$2mF_o-DF_c$ (at 0.7 rmsd) in gray
 mF_o-DF_c (at 3 rmsd) in purple (negative)
and green (positive)

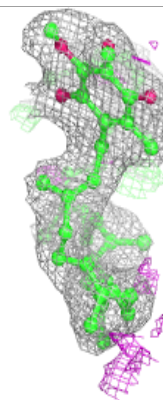
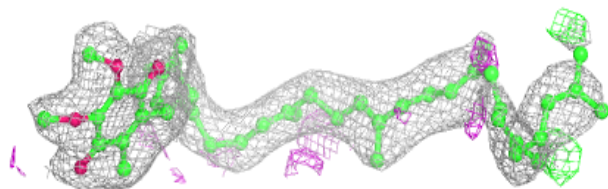
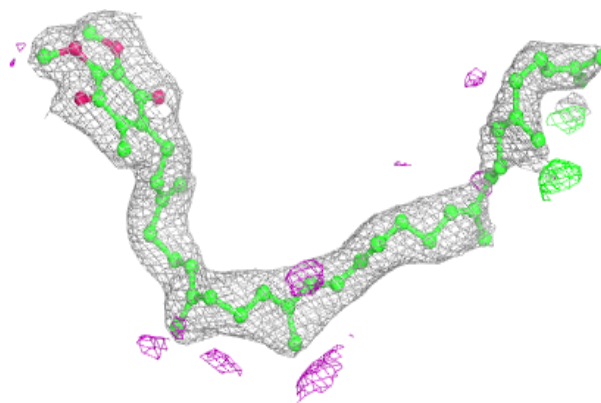
**Electron density around BPH M 401:**

$2mF_o-DF_c$ (at 0.7 rmsd) in gray
 mF_o-DF_c (at 3 rmsd) in purple (negative)
and green (positive)

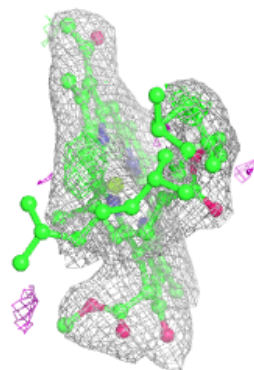
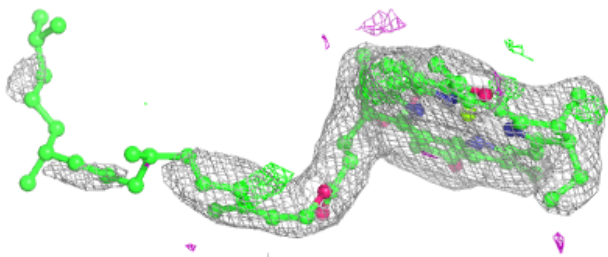
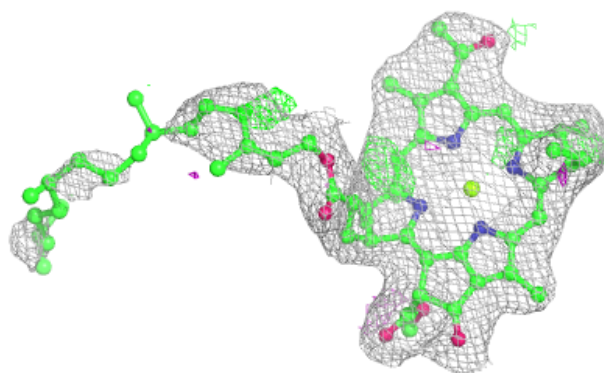


Electron density around U10 M 501:

$2mF_o-DF_c$ (at 0.7 rmsd) in gray
 mF_o-DF_c (at 3 rmsd) in purple (negative)
and green (positive)

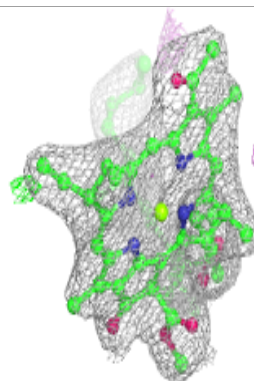
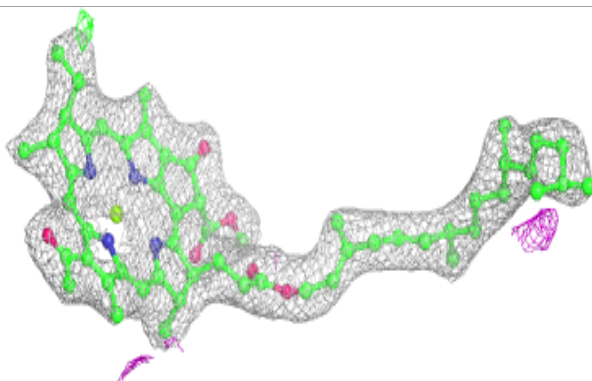
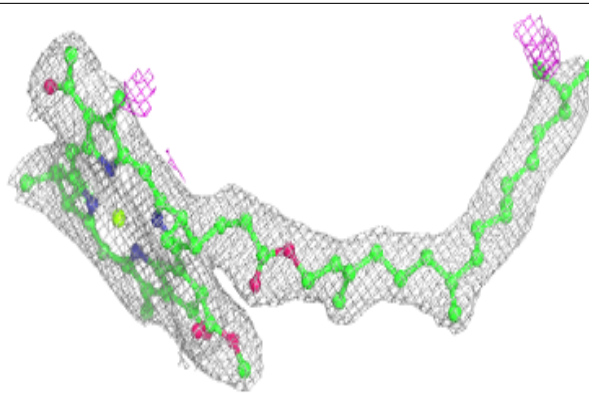
**Electron density around BCL M 311:**

$2mF_o-DF_c$ (at 0.7 rmsd) in gray
 mF_o-DF_c (at 3 rmsd) in purple (negative)
and green (positive)

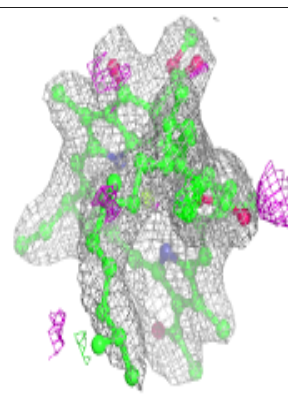
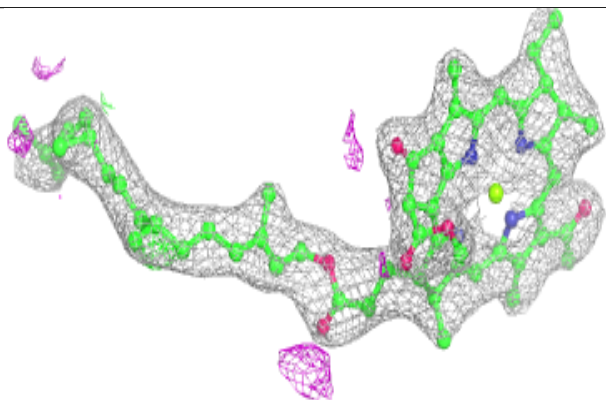
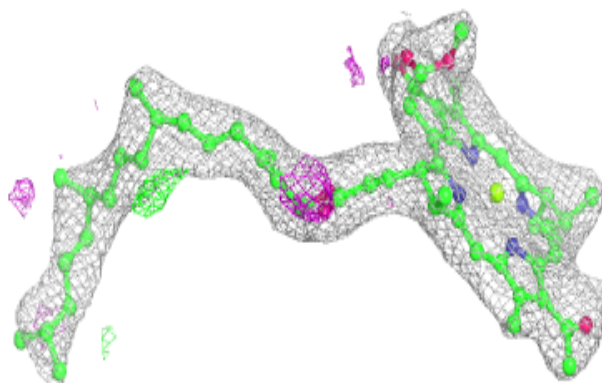


Electron density around BCL L 312:

$2mF_o-DF_c$ (at 0.7 rmsd) in gray
 mF_o-DF_c (at 3 rmsd) in purple (negative)
and green (positive)

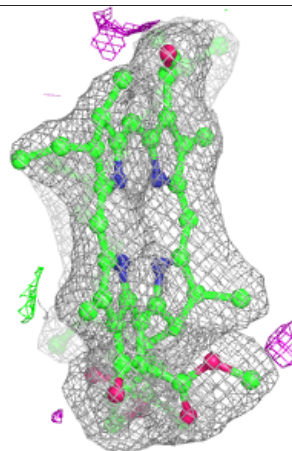
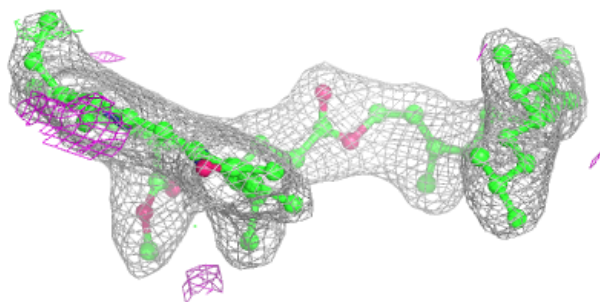
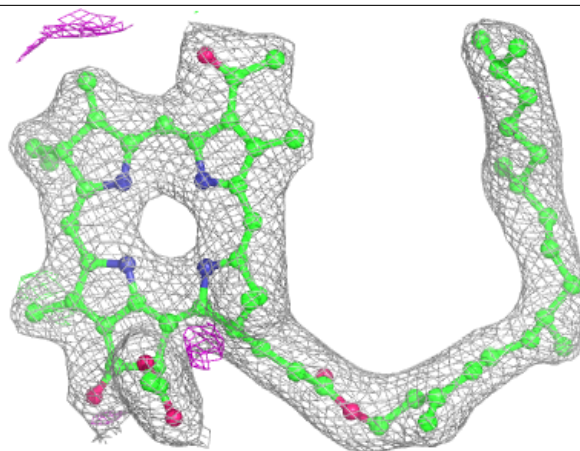
**Electron density around BCL M 313:**

$2mF_o-DF_c$ (at 0.7 rmsd) in gray
 mF_o-DF_c (at 3 rmsd) in purple (negative)
and green (positive)



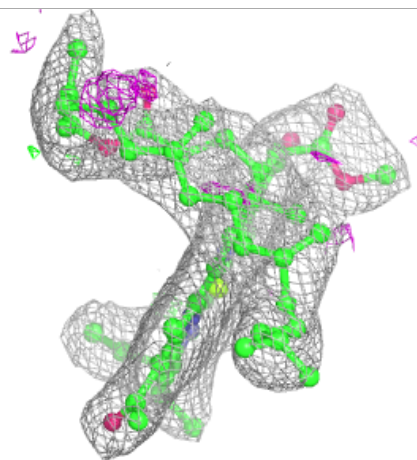
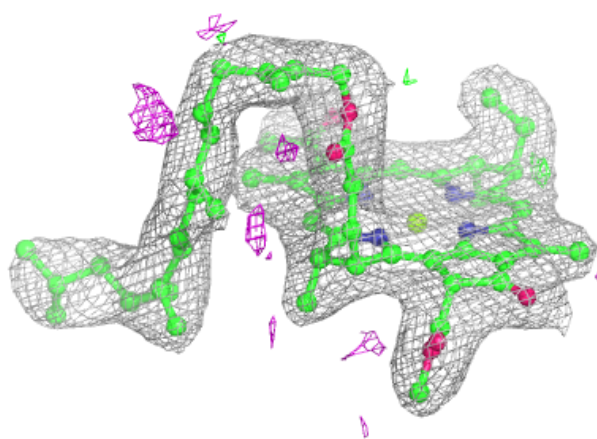
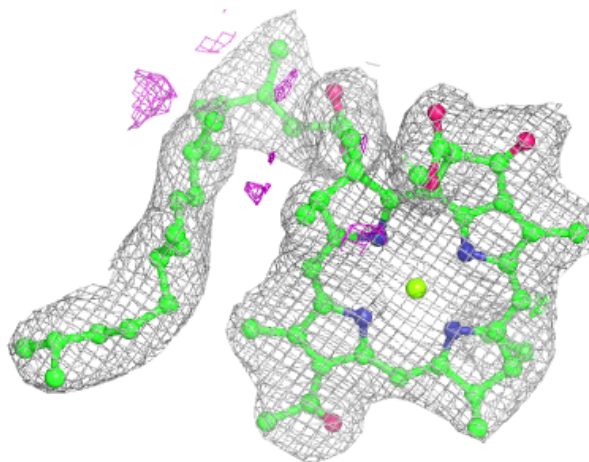
Electron density around BPH L 402:

$2mF_o-DF_c$ (at 0.7 rmsd) in gray
 mF_o-DF_c (at 3 rmsd) in purple (negative)
and green (positive)



Electron density around BCL L 314:

$2mF_o-DF_c$ (at 0.7 rmsd) in gray
 mF_o-DF_c (at 3 rmsd) in purple (negative)
and green (positive)



6.5 Other polymers [i](#)

There are no such residues in this entry.