



Full wwPDB X-ray Structure Validation Report ⓘ

Sep 10, 2023 – 03:41 AM EDT

PDB ID : 4HGF
Title : Crystal structure of P450 BM3 5F5K heme domain variant complexed with styrene
Authors : Shehzad, A.; Panneerselvam, S.; Bocola, M.; Mueller-Dieckmann, J.; Wilmanns, M.; Schwaneberg, U.
Deposited on : 2012-10-08
Resolution : 1.70 Å(reported)

This is a Full wwPDB X-ray Structure Validation Report for a publicly released PDB entry.

We welcome your comments at validation@mail.wwpdb.org

A user guide is available at

<https://www.wwpdb.org/validation/2017/XrayValidationReportHelp>

with specific help available everywhere you see the ⓘ symbol.

The types of validation reports are described at

<http://www.wwpdb.org/validation/2017/FAQs#types>.

The following versions of software and data (see [references ⓘ](#)) were used in the production of this report:

MolProbity : 4.02b-467
Mogul : 1.8.5 (274361), CSD as541be (2020)
Xtrriage (Phenix) : 1.13
EDS : 2.35.1
buster-report : 1.1.7 (2018)
Percentile statistics : 20191225.v01 (using entries in the PDB archive December 25th 2019)
Refmac : 5.8.0158
CCP4 : 7.0.044 (Gargrove)
Ideal geometry (proteins) : Engh & Huber (2001)
Ideal geometry (DNA, RNA) : Parkinson et al. (1996)
Validation Pipeline (wwPDB-VP) : 2.35.1

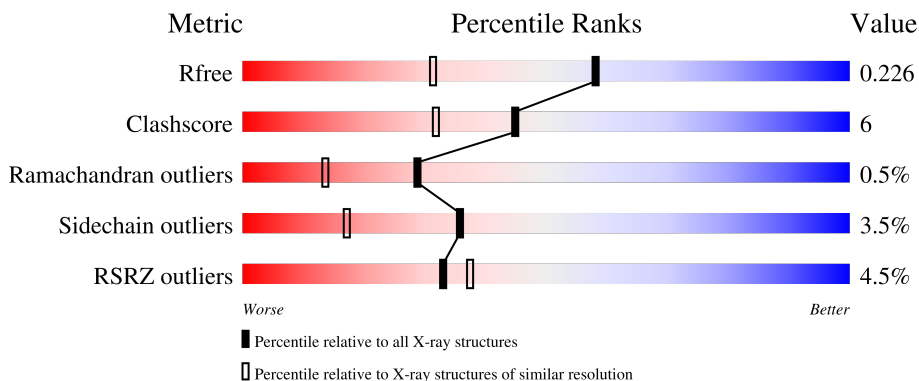
1 Overall quality at a glance

The following experimental techniques were used to determine the structure:

X-RAY DIFFRACTION

The reported resolution of this entry is 1.70 Å.

Percentile scores (ranging between 0-100) for global validation metrics of the entry are shown in the following graphic. The table shows the number of entries on which the scores are based.



Metric	Whole archive (#Entries)	Similar resolution (#Entries, resolution range(Å))
R_{free}	130704	4298 (1.70-1.70)
Clashscore	141614	4695 (1.70-1.70)
Ramachandran outliers	138981	4610 (1.70-1.70)
Sidechain outliers	138945	4610 (1.70-1.70)
RSRZ outliers	127900	4222 (1.70-1.70)

The table below summarises the geometric issues observed across the polymeric chains and their fit to the electron density. The red, orange, yellow and green segments of the lower bar indicate the fraction of residues that contain outliers for ≥ 3 , 2, 1 and 0 types of geometric quality criteria respectively. A grey segment represents the fraction of residues that are not modelled. The numeric value for each fraction is indicated below the corresponding segment, with a dot representing fractions $\leq 5\%$. The upper red bar (where present) indicates the fraction of residues that have poor fit to the electron density. The numeric value is given above the bar.

Mol	Chain	Length	Quality of chain
1	A	455	 4% 82% 13% . .
1	B	455	 4% 84% 11% . .

The following table lists non-polymeric compounds, carbohydrate monomers and non-standard residues in protein, DNA, RNA chains that are outliers for geometric or electron-density-fit criteria:

Mol	Type	Chain	Res	Chirality	Geometry	Clashes	Electron density
3	SYN	B	502	-	-	X	-

2 Entry composition [i](#)

There are 5 unique types of molecules in this entry. The entry contains 8178 atoms, of which 0 are hydrogens and 0 are deuteriums.

In the tables below, the ZeroOcc column contains the number of atoms modelled with zero occupancy, the AltConf column contains the number of residues with at least one atom in alternate conformation and the Trace column contains the number of residues modelled with at most 2 atoms.

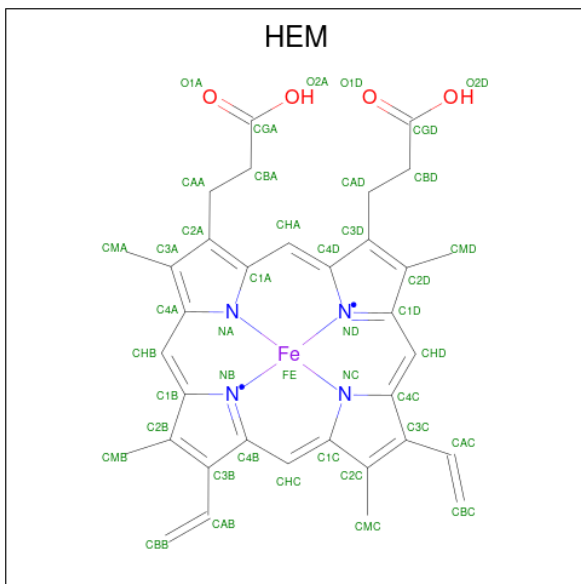
- Molecule 1 is a protein called Bifunctional P-450/NADPH-P450 reductase.

Mol	Chain	Residues	Atoms					ZeroOcc	AltConf	Trace
			Total	C	N	O	S			
1	A	442	Total 3607	C 2314	N 608	O 668	S 17	0	9	0
1	B	441	Total 3599	C 2303	N 609	O 669	S 18	0	8	0

There are 6 discrepancies between the modelled and reference sequences:

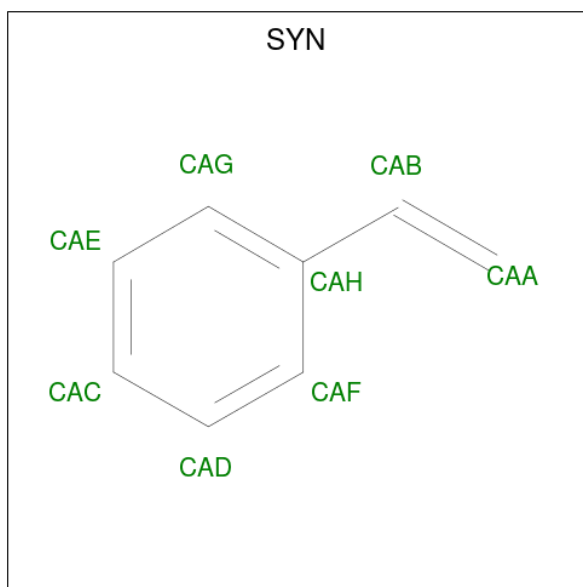
Chain	Residue	Modelled	Actual	Comment	Reference
A	87	ALA	PHE	engineered mutation	UNP P14779
A	184	LYS	ALA	engineered mutation	UNP P14779
A	235	ALA	THR	engineered mutation	UNP P14779
B	87	ALA	PHE	engineered mutation	UNP P14779
B	184	LYS	ALA	engineered mutation	UNP P14779
B	235	ALA	THR	engineered mutation	UNP P14779

- Molecule 2 is PROTOPORPHYRIN IX CONTAINING FE (three-letter code: HEM) (formula: $C_{34}H_{32}FeN_4O_4$).



Mol	Chain	Residues	Atoms				ZeroOcc	AltConf	
			Total	C	Fe	N			O
2	A	1	43	34	1	4	4	0	0
2	B	1	43	34	1	4	4	0	0

- Molecule 3 is ethenylbenzene (three-letter code: SYN) (formula: C₈H₈).



Mol	Chain	Residues	Atoms		ZeroOcc	AltConf
			Total	C		
3	A	1	8	8	0	0
3	B	1	8	8	0	0

- Molecule 4 is CHLORIDE ION (three-letter code: CL) (formula: Cl).

Mol	Chain	Residues	Atoms		ZeroOcc	AltConf
			Total	Cl		
4	A	1	1	1	0	0

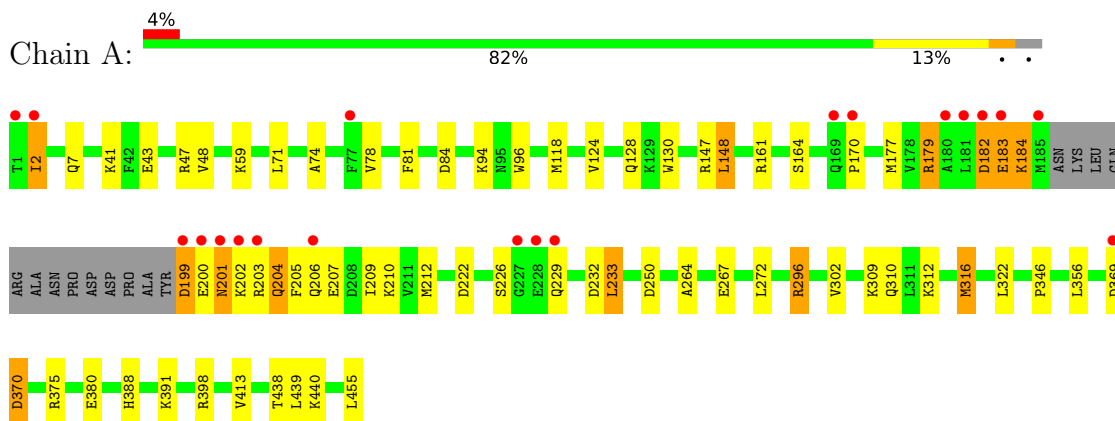
- Molecule 5 is water.

Mol	Chain	Residues	Atoms		ZeroOcc	AltConf
			Total	O		
5	A	423	423	423	0	0
5	B	446	446	446	0	0

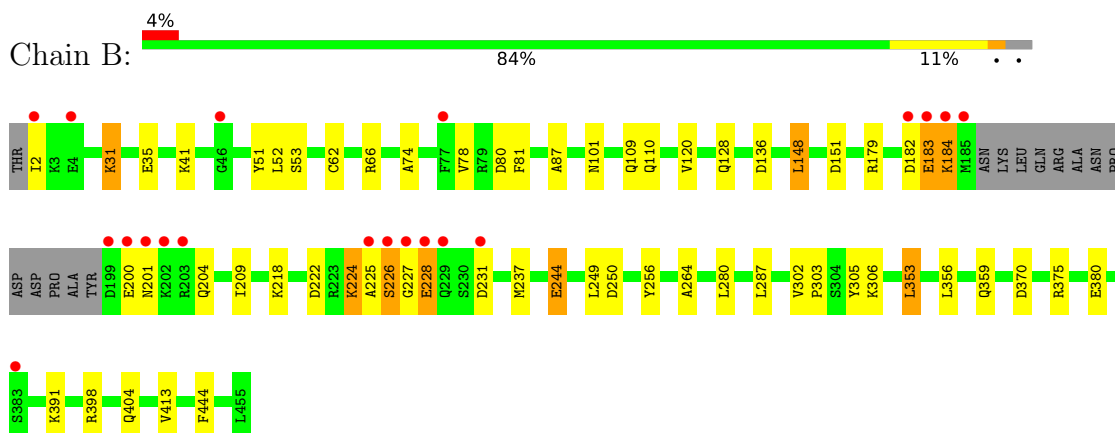
3 Residue-property plots [i](#)

These plots are drawn for all protein, RNA, DNA and oligosaccharide chains in the entry. The first graphic for a chain summarises the proportions of the various outlier classes displayed in the second graphic. The second graphic shows the sequence view annotated by issues in geometry and electron density. Residues are color-coded according to the number of geometric quality criteria for which they contain at least one outlier: green = 0, yellow = 1, orange = 2 and red = 3 or more. A red dot above a residue indicates a poor fit to the electron density ($RSRZ > 2$). Stretches of 2 or more consecutive residues without any outlier are shown as a green connector. Residues present in the sample, but not in the model, are shown in grey.

- Molecule 1: Bifunctional P-450/NADPH-P450 reductase



- Molecule 1: Bifunctional P-450/NADPH-P450 reductase



4 Data and refinement statistics

Property	Value	Source
Space group	P 1 21 1	Depositor
Cell constants a, b, c, α , β , γ	59.14Å 148.12Å 64.07Å 90.00° 98.16° 90.00°	Depositor
Resolution (Å)	19.51 – 1.70 19.51 – 1.70	Depositor EDS
% Data completeness (in resolution range)	98.3 (19.51-1.70) 98.4 (19.51-1.70)	Depositor EDS
R_{merge}	(Not available)	Depositor
R_{sym}	(Not available)	Depositor
$\langle I/\sigma(I) \rangle$ ¹	1.59 (at 1.70Å)	Xtrriage
Refinement program	REFMAC 5.6.0117	Depositor
R, R_{free}	0.189 , 0.228 0.189 , 0.226	Depositor DCC
R_{free} test set	811 reflections (0.69%)	wwPDB-VP
Wilson B-factor (Å ²)	17.1	Xtrriage
Anisotropy	0.032	Xtrriage
Bulk solvent k_{sol} (e/Å ³), B_{sol} (Å ²)	0.36 , 55.8	EDS
L-test for twinning ²	$\langle L \rangle = 0.46$, $\langle L^2 \rangle = 0.28$	Xtrriage
Estimated twinning fraction	No twinning to report.	Xtrriage
F_o, F_c correlation	0.95	EDS
Total number of atoms	8178	wwPDB-VP
Average B, all atoms (Å ²)	21.0	wwPDB-VP

Xtrriage's analysis on translational NCS is as follows: *The largest off-origin peak in the Patterson function is 6.86% of the height of the origin peak. No significant pseudotranslation is detected.*

¹Intensities estimated from amplitudes.

²Theoretical values of $\langle |L| \rangle$, $\langle L^2 \rangle$ for acentric reflections are 0.5, 0.333 respectively for untwinned datasets, and 0.375, 0.2 for perfectly twinned datasets.

5 Model quality [i](#)

5.1 Standard geometry [i](#)

Bond lengths and bond angles in the following residue types are not validated in this section: CL, SYN, HEM

The Z score for a bond length (or angle) is the number of standard deviations the observed value is removed from the expected value. A bond length (or angle) with $|Z| > 5$ is considered an outlier worth inspection. RMSZ is the root-mean-square of all Z scores of the bond lengths (or angles).

Mol	Chain	Bond lengths		Bond angles	
		RMSZ	# Z >5	RMSZ	# Z >5
1	A	1.19	2/3714 (0.1%)	1.05	10/5012 (0.2%)
1	B	1.20	2/3700 (0.1%)	1.05	10/4993 (0.2%)
All	All	1.20	4/7414 (0.1%)	1.05	20/10005 (0.2%)

All (4) bond length outliers are listed below:

Mol	Chain	Res	Type	Atoms	Z	Observed(Å)	Ideal(Å)
1	A	96	TRP	CD2-CE2	5.84	1.48	1.41
1	A	130	TRP	CD2-CE2	5.64	1.48	1.41
1	B	244	GLU	CG-CD	5.45	1.60	1.51
1	B	256	TYR	CG-CD2	5.11	1.45	1.39

All (20) bond angle outliers are listed below:

Mol	Chain	Res	Type	Atoms	Z	Observed(°)	Ideal(°)
1	A	316	MET	CG-SD-CE	5.87	109.60	100.20
1	A	161	ARG	NE-CZ-NH1	5.71	123.16	120.30
1	A	398	ARG	NE-CZ-NH1	-5.71	117.45	120.30
1	B	237	MET	CG-SD-CE	5.64	109.23	100.20
1	A	232	ASP	CB-CG-OD1	5.53	123.28	118.30
1	A	296	ARG	NE-CZ-NH1	5.49	123.05	120.30
1	A	356	LEU	CB-CG-CD2	-5.49	101.67	111.00
1	B	280	LEU	CB-CG-CD2	5.48	120.32	111.00
1	A	233	LEU	CB-CG-CD2	5.47	120.30	111.00
1	B	353	LEU	CB-CG-CD1	-5.33	101.94	111.00
1	B	66	ARG	NE-CZ-NH1	-5.29	117.66	120.30
1	B	398	ARG	NE-CZ-NH1	-5.21	117.70	120.30
1	B	250	ASP	CB-CG-OD1	5.19	122.97	118.30
1	B	249	LEU	CB-CG-CD1	-5.16	102.23	111.00
1	A	71	LEU	CB-CG-CD2	-5.11	102.31	111.00

Continued on next page...

Continued from previous page...

Mol	Chain	Res	Type	Atoms	Z	Observed(°)	Ideal(°)
1	A	84	ASP	CB-CG-OD1	5.11	122.90	118.30
1	B	444	PHE	CB-CG-CD2	-5.08	117.25	120.80
1	B	151	ASP	CB-CG-OD2	-5.05	113.75	118.30
1	B	244	GLU	OE1-CD-OE2	-5.02	117.28	123.30
1	A	250	ASP	CB-CG-OD1	5.01	122.81	118.30

There are no chirality outliers.

There are no planarity outliers.

5.2 Too-close contacts [i](#)

In the following table, the Non-H and H(model) columns list the number of non-hydrogen atoms and hydrogen atoms in the chain respectively. The H(added) column lists the number of hydrogen atoms added and optimized by MolProbity. The Clashes column lists the number of clashes within the asymmetric unit, whereas Symm-Clashes lists symmetry-related clashes.

Mol	Chain	Non-H	H(model)	H(added)	Clashes	Symm-Clashes
1	A	3607	0	3636	47	0
1	B	3599	0	3603	45	0
2	A	43	0	30	0	0
2	B	43	0	30	0	0
3	A	8	0	8	3	0
3	B	8	0	7	4	0
4	A	1	0	0	0	0
5	A	423	0	0	10	0
5	B	446	0	0	13	0
All	All	8178	0	7314	95	0

The all-atom clashscore is defined as the number of clashes found per 1000 atoms (including hydrogen atoms). The all-atom clashscore for this structure is 6.

All (95) close contacts within the same asymmetric unit are listed below, sorted by their clash magnitude.

Atom-1	Atom-2	Interatomic distance (Å)	Clash overlap (Å)
1:A:370:ASP:OD2	1:A:375:ARG:NH1	1.91	1.03
1:A:128:GLN:HG3	5:B:604:HOH:O	1.59	1.01
1:B:128:GLN:NE2	5:B:1003:HOH:O	1.92	0.98
1:B:183:GLU:OE1	1:B:201:ASN:HB3	1.71	0.90
1:A:267[B]:GLU:HG2	1:A:438:THR:HG21	1.54	0.89
1:A:199:ASP:O	1:A:202:LYS:HD3	1.74	0.87

Continued on next page...

Continued from previous page...

Atom-1	Atom-2	Interatomic distance (Å)	Clash overlap (Å)
1:A:118:MET:HG2	5:A:941:HOH:O	1.73	0.87
1:B:128:GLN:HG2	5:B:1004:HOH:O	1.77	0.85
1:A:310:GLN:HG3	5:A:899:HOH:O	1.78	0.82
1:A:43:GLU:HG2	1:A:48[B]:VAL:HG12	1.61	0.82
1:A:267[B]:GLU:CG	1:A:438:THR:HG21	2.13	0.78
1:B:204:GLN:NE2	1:B:204:GLN:HA	2.00	0.75
1:A:267[B]:GLU:HG2	1:A:438:THR:CG2	2.16	0.75
1:B:222:ASP:OD2	5:B:885:HOH:O	2.05	0.75
1:B:183:GLU:O	1:B:183:GLU:HG3	1.86	0.75
1:A:179:ARG:CD	1:A:204:GLN:OE1	2.35	0.74
1:B:226:SER:C	1:B:228:GLU:H	1.95	0.70
1:B:182:ASP:C	1:B:184:LYS:H	1.95	0.69
1:A:229:GLN:HA	1:A:229:GLN:OE1	1.93	0.67
1:A:309:LYS:O	1:A:312[B]:LYS:HE3	1.95	0.67
1:B:31[A]:LYS:HD2	5:B:811:HOH:O	1.95	0.66
1:A:179:ARG:HD2	1:A:204:GLN:OE1	1.95	0.66
1:A:212:MET:SD	5:A:1005:HOH:O	2.54	0.66
1:B:204:GLN:HA	1:B:204:GLN:HE21	1.59	0.64
3:B:502:SYN:H8	5:B:1046:HOH:O	1.97	0.64
1:A:183:GLU:HG2	1:A:205:PHE:HB2	1.79	0.64
1:B:224:LYS:HZ3	1:B:225:ALA:HB2	1.63	0.64
1:A:183:GLU:O	1:A:183:GLU:HG3	1.98	0.64
1:A:147:ARG:HG2	1:A:164[B]:SER:OG	1.98	0.63
1:A:199:ASP:OD2	1:A:199:ASP:N	2.30	0.63
1:A:177:MET:HG2	1:A:212:MET:HE1	1.81	0.62
1:B:183:GLU:OE1	1:B:201:ASN:CB	2.47	0.61
3:A:502:SYN:H8	5:A:874:HOH:O	2.01	0.60
1:B:303:PRO:HG3	5:B:883:HOH:O	2.01	0.60
1:B:404:GLN:HG3	5:B:1024:HOH:O	2.02	0.60
1:A:7:GLN:HB2	1:A:41[A]:LYS:HG3	1.83	0.59
1:A:264:ALA:O	3:A:502:SYN:H9	2.02	0.59
1:A:388:HIS:HA	1:A:391:LYS:HD3	1.86	0.58
1:B:224:LYS:NZ	1:B:225:ALA:HB2	2.19	0.57
1:B:74:ALA:O	1:B:78:VAL:HG23	2.05	0.57
1:B:80:ASP:HB2	1:B:184:LYS:NZ	2.20	0.55
1:A:272:LEU:HD13	1:A:322:LEU:HG	1.87	0.55
1:A:316:MET:CE	1:A:380:GLU:HG3	2.36	0.55
1:B:182:ASP:C	1:B:184:LYS:N	2.59	0.55
1:B:306:LYS:HG2	5:B:844:HOH:O	2.06	0.55
1:B:109:GLN:OE1	1:B:305:TYR:OH	2.18	0.55
1:A:316:MET:HE1	1:A:380:GLU:HG3	1.87	0.54

Continued on next page...

Continued from previous page...

Atom-1	Atom-2	Interatomic distance (Å)	Clash overlap (Å)
1:B:87:ALA:HB1	3:B:502:SYN:H4	1.90	0.54
1:A:182:ASP:C	1:A:184:LYS:H	2.11	0.54
1:A:201:ASN:OD1	1:A:201:ASN:N	2.40	0.53
1:B:226:SER:C	1:B:228:GLU:N	2.62	0.53
1:B:35:GLU:HG3	5:B:979:HOH:O	2.08	0.53
1:A:296:ARG:NH2	5:A:849:HOH:O	2.38	0.53
1:A:267[B]:GLU:CG	1:A:438:THR:CG2	2.84	0.51
1:B:148:LEU:HD21	1:B:413:VAL:HG21	1.91	0.51
1:A:148:LEU:HD21	1:A:413:VAL:HG21	1.93	0.51
1:B:136[A]:ASP:O	1:B:136[A]:ASP:OD2	2.29	0.50
1:B:182:ASP:O	1:B:184:LYS:N	2.39	0.50
1:B:226:SER:O	1:B:228:GLU:N	2.45	0.50
1:B:101:ASN:HD21	1:B:244:GLU:CD	2.15	0.49
1:B:53:SER:HB3	1:B:359:GLN:HB3	1.94	0.49
1:B:370:ASP:OD2	1:B:375[B]:ARG:NH1	2.41	0.49
1:A:94[B]:LYS:HE3	5:A:784:HOH:O	2.12	0.49
1:A:7:GLN:HB2	1:A:41[A]:LYS:HE2	1.95	0.49
1:A:204:GLN:HG3	1:A:205:PHE:N	2.27	0.49
3:B:502:SYN:H8	5:B:821:HOH:O	2.14	0.48
1:B:287:LEU:C	1:B:287:LEU:HD23	2.34	0.47
1:A:81:PHE:HE2	1:A:209:ILE:HD11	1.80	0.47
1:B:209:ILE:HD13	1:B:209:ILE:HA	1.70	0.47
1:A:47:ARG:NH2	5:A:767:HOH:O	2.48	0.46
5:A:855:HOH:O	1:B:218:LYS:HE2	2.15	0.46
1:A:264:ALA:O	3:A:502:SYN:CAA	2.63	0.46
1:A:222:ASP:OD2	5:A:824:HOH:O	2.21	0.46
1:A:205:PHE:HD2	1:A:206:GLN:HG2	1.79	0.45
1:A:177:MET:HG2	1:A:212:MET:CE	2.44	0.45
1:A:200:GLU:O	1:A:202:LYS:N	2.47	0.45
1:A:170:PRO:HA	5:A:873:HOH:O	2.18	0.44
1:B:31[A]:LYS:HB3	1:B:31[A]:LYS:HE2	1.40	0.44
1:A:41[B]:LYS:NZ	1:A:41[B]:LYS:CB	2.81	0.44
1:B:81:PHE:HE1	1:B:209:ILE:HD11	1.83	0.43
1:A:182:ASP:O	1:A:184:LYS:N	2.52	0.43
1:A:74:ALA:O	1:A:78:VAL:HG23	2.18	0.43
1:A:124:VAL:HG13	1:A:455:LEU:HD13	2.01	0.42
1:B:51:TYR:HD2	1:B:356:LEU:HD13	1.85	0.42
1:B:62:CYS:SG	1:B:391:LYS:HE2	2.59	0.42
1:A:2:ILE:HG13	1:A:346:PRO:HG3	2.02	0.42
1:B:31[A]:LYS:NZ	5:B:716:HOH:O	2.52	0.42
1:B:183:GLU:O	1:B:183:GLU:CG	2.54	0.42

Continued on next page...

Continued from previous page...

Atom-1	Atom-2	Interatomic distance (Å)	Clash overlap (Å)
1:B:264:ALA:O	3:B:502:SYN:CAA	2.68	0.42
1:B:370:ASP:OD2	1:B:375[B]:ARG:NH2	2.49	0.41
1:A:439:LEU:O	1:A:440[A]:LYS:HG2	2.20	0.41
1:B:52:LEU:HD11	1:B:353:LEU:HD13	2.02	0.41
1:B:380:GLU:HB3	5:B:769:HOH:O	2.20	0.41
1:B:179:ARG:HH11	1:B:179:ARG:HG3	1.86	0.41
1:B:120:VAL:HG11	1:B:302:VAL:CG1	2.52	0.40

There are no symmetry-related clashes.

5.3 Torsion angles [i](#)

5.3.1 Protein backbone [i](#)

In the following table, the Percentiles column shows the percent Ramachandran outliers of the chain as a percentile score with respect to all X-ray entries followed by that with respect to entries of similar resolution.

The Analysed column shows the number of residues for which the backbone conformation was analysed, and the total number of residues.

Mol	Chain	Analysed	Favoured	Allowed	Outliers	Percentiles	
1	A	447/455 (98%)	436 (98%)	9 (2%)	2 (0%)	34	18
1	B	445/455 (98%)	429 (96%)	14 (3%)	2 (0%)	34	18
All	All	892/910 (98%)	865 (97%)	23 (3%)	4 (0%)	29	18

All (4) Ramachandran outliers are listed below:

Mol	Chain	Res	Type
1	A	183	GLU
1	B	183	GLU
1	B	227	GLY
1	A	370	ASP

5.3.2 Protein sidechains [i](#)

In the following table, the Percentiles column shows the percent sidechain outliers of the chain as a percentile score with respect to all X-ray entries followed by that with respect to entries of similar resolution.

The Analysed column shows the number of residues for which the sidechain conformation was analysed, and the total number of residues.

Mol	Chain	Analysed	Rotameric	Outliers	Percentiles	
1	A	396/398 (100%)	380 (96%)	16 (4%)	31	13
1	B	394/398 (99%)	382 (97%)	12 (3%)	41	22
All	All	790/796 (99%)	762 (96%)	28 (4%)	36	17

All (28) residues with a non-rotameric sidechain are listed below:

Mol	Chain	Res	Type
1	A	2	ILE
1	A	59	LYS
1	A	148	LEU
1	A	179	ARG
1	A	182	ASP
1	A	184	LYS
1	A	199	ASP
1	A	201	ASN
1	A	203	ARG
1	A	204	GLN
1	A	207	GLU
1	A	210	LYS
1	A	226	SER
1	A	233	LEU
1	A	302	VAL
1	A	369	ASP
1	B	2	ILE
1	B	31[A]	LYS
1	B	31[B]	LYS
1	B	41	LYS
1	B	110	GLN
1	B	148	LEU
1	B	184	LYS
1	B	200	GLU
1	B	224	LYS
1	B	226	SER
1	B	228	GLU
1	B	231	ASP

Sometimes sidechains can be flipped to improve hydrogen bonding and reduce clashes. All (4) such sidechains are listed below:

Mol	Chain	Res	Type
1	A	403	GLN
1	B	101	ASN
1	B	110	GLN
1	B	236	HIS

5.3.3 RNA [i](#)

There are no RNA molecules in this entry.

5.4 Non-standard residues in protein, DNA, RNA chains [i](#)

There are no non-standard protein/DNA/RNA residues in this entry.

5.5 Carbohydrates [i](#)

There are no monosaccharides in this entry.

5.6 Ligand geometry [i](#)

Of 5 ligands modelled in this entry, 1 is monoatomic - leaving 4 for Mogul analysis.

In the following table, the Counts columns list the number of bonds (or angles) for which Mogul statistics could be retrieved, the number of bonds (or angles) that are observed in the model and the number of bonds (or angles) that are defined in the Chemical Component Dictionary. The Link column lists molecule types, if any, to which the group is linked. The Z score for a bond length (or angle) is the number of standard deviations the observed value is removed from the expected value. A bond length (or angle) with $|Z| > 2$ is considered an outlier worth inspection. RMSZ is the root-mean-square of all Z scores of the bond lengths (or angles).

Mol	Type	Chain	Res	Link	Bond lengths			Bond angles		
					Counts	RMSZ	# Z > 2	Counts	RMSZ	# Z > 2
2	HEM	B	501	1	41,50,50	2.03	13 (31%)	45,82,82	2.96	16 (35%)
2	HEM	A	501	1	41,50,50	1.84	11 (26%)	45,82,82	2.67	16 (35%)
3	SYN	A	502	-	8,8,8	2.00	2 (25%)	9,9,9	0.89	0
3	SYN	B	502	-	8,8,8	1.76	1 (12%)	9,9,9	0.94	0

In the following table, the Chirals column lists the number of chiral outliers, the number of chiral centers analysed, the number of these observed in the model and the number defined in the Chemical Component Dictionary. Similar counts are reported in the Torsion and Rings columns. '-' means no outliers of that kind were identified.

Mol	Type	Chain	Res	Link	Chirals	Torsions	Rings
2	HEM	B	501	1	-	2/12/54/54	-
2	HEM	A	501	1	-	3/12/54/54	-
3	SYN	A	502	-	-	2/2/2/2	0/1/1/1
3	SYN	B	502	-	-	2/2/2/2	0/1/1/1

All (27) bond length outliers are listed below:

Mol	Chain	Res	Type	Atoms	Z	Observed(Å)	Ideal(Å)
2	B	501	HEM	C3D-C2D	6.62	1.50	1.36
2	A	501	HEM	C3D-C2D	5.21	1.47	1.36
3	A	502	SYN	CAA-CAB	4.18	1.57	1.29
3	B	502	SYN	CAA-CAB	3.96	1.55	1.29
2	B	501	HEM	C1B-NB	-3.94	1.33	1.40
2	B	501	HEM	C3C-C2C	-3.55	1.35	1.40
2	A	501	HEM	C3C-CAC	3.50	1.55	1.47
2	A	501	HEM	FE-ND	3.33	2.13	1.96
2	B	501	HEM	FE-NB	3.33	2.13	1.96
2	B	501	HEM	C3C-CAC	3.32	1.54	1.47
2	B	501	HEM	O2D-CGD	-2.93	1.20	1.30
2	A	501	HEM	FE-NB	2.93	2.11	1.96
2	A	501	HEM	C1B-NB	-2.91	1.35	1.40
2	B	501	HEM	C4A-NA	-2.88	1.30	1.36
2	B	501	HEM	O2A-CGA	-2.88	1.21	1.30
2	A	501	HEM	C3B-C2B	-2.83	1.31	1.37
2	A	501	HEM	C3C-C2C	-2.65	1.36	1.40
2	B	501	HEM	FE-ND	2.60	2.09	1.96
2	A	501	HEM	O2A-CGA	-2.48	1.22	1.30
2	B	501	HEM	C2C-C1C	2.48	1.48	1.42
2	A	501	HEM	C1D-ND	-2.40	1.33	1.38
2	B	501	HEM	C4D-ND	-2.26	1.36	1.40
3	A	502	SYN	CAE-CAG	2.21	1.43	1.38
2	A	501	HEM	O2D-CGD	-2.15	1.23	1.30
2	B	501	HEM	CHD-C1D	-2.14	1.34	1.41
2	A	501	HEM	C4D-ND	-2.10	1.36	1.40
2	B	501	HEM	CHC-C4B	-2.09	1.35	1.41

All (32) bond angle outliers are listed below:

Mol	Chain	Res	Type	Atoms	Z	Observed(°)	Ideal(°)
2	A	501	HEM	C4D-ND-C1D	10.24	115.65	105.07
2	B	501	HEM	C1B-NB-C4B	9.94	115.34	105.07
2	B	501	HEM	C4D-ND-C1D	7.81	113.14	105.07

Continued on next page...

Continued from previous page...

Mol	Chain	Res	Type	Atoms	Z	Observed(°)	Ideal(°)
2	B	501	HEM	C2B-C1B-NB	-6.20	102.50	109.84
2	B	501	HEM	C3B-C2B-C1B	5.73	110.74	106.49
2	A	501	HEM	C3D-C4D-ND	-5.30	104.26	110.17
2	A	501	HEM	C1B-NB-C4B	5.17	110.41	105.07
2	A	501	HEM	CHB-C1B-NB	5.05	130.62	124.38
2	B	501	HEM	CHD-C1D-ND	4.76	129.61	124.43
2	A	501	HEM	C3B-C2B-C1B	4.61	109.91	106.49
2	A	501	HEM	CHA-C4D-ND	4.09	129.44	124.38
2	B	501	HEM	CHA-C4D-ND	3.80	129.08	124.38
2	B	501	HEM	C4B-CHC-C1C	3.54	127.23	122.56
2	B	501	HEM	CMB-C2B-C1B	-3.53	119.67	125.04
2	A	501	HEM	C2B-C1B-NB	-3.48	105.71	109.84
2	B	501	HEM	CHC-C4B-NB	3.25	127.97	124.43
2	B	501	HEM	CHB-C1B-NB	3.20	128.34	124.38
2	B	501	HEM	C4A-C3A-C2A	3.17	109.20	107.00
2	A	501	HEM	C4B-CHC-C1C	3.07	126.61	122.56
2	B	501	HEM	CMA-C3A-C4A	-3.02	123.83	128.46
2	B	501	HEM	C3C-C4C-NC	-2.97	105.33	110.94
2	A	501	HEM	C3C-C4C-NC	-2.59	106.05	110.94
2	A	501	HEM	CBD-CAD-C3D	-2.56	105.51	112.63
2	B	501	HEM	O1D-CGD-CBD	-2.32	115.61	123.08
2	A	501	HEM	CHD-C1D-ND	2.32	126.95	124.43
2	A	501	HEM	CHC-C4B-C3B	2.32	128.12	124.57
2	A	501	HEM	C2C-C3C-C4C	2.28	108.49	106.90
2	B	501	HEM	C3D-C4D-ND	-2.26	107.65	110.17
2	B	501	HEM	CHD-C1D-C2D	-2.25	121.46	124.98
2	A	501	HEM	C2D-C1D-ND	-2.16	107.30	109.88
2	A	501	HEM	CMC-C2C-C3C	2.11	128.62	124.68
2	A	501	HEM	C4A-C3A-C2A	2.04	108.41	107.00

There are no chirality outliers.

All (9) torsion outliers are listed below:

Mol	Chain	Res	Type	Atoms
3	B	502	SYN	CAA-CAB-CAH-CAG
3	B	502	SYN	CAA-CAB-CAH-CAF
3	A	502	SYN	CAA-CAB-CAH-CAF
3	A	502	SYN	CAA-CAB-CAH-CAG
2	B	501	HEM	CAD-CBD-CGD-O1D
2	A	501	HEM	CAD-CBD-CGD-O2D
2	B	501	HEM	CAD-CBD-CGD-O2D
2	A	501	HEM	CAD-CBD-CGD-O1D

Continued on next page...

Continued from previous page...

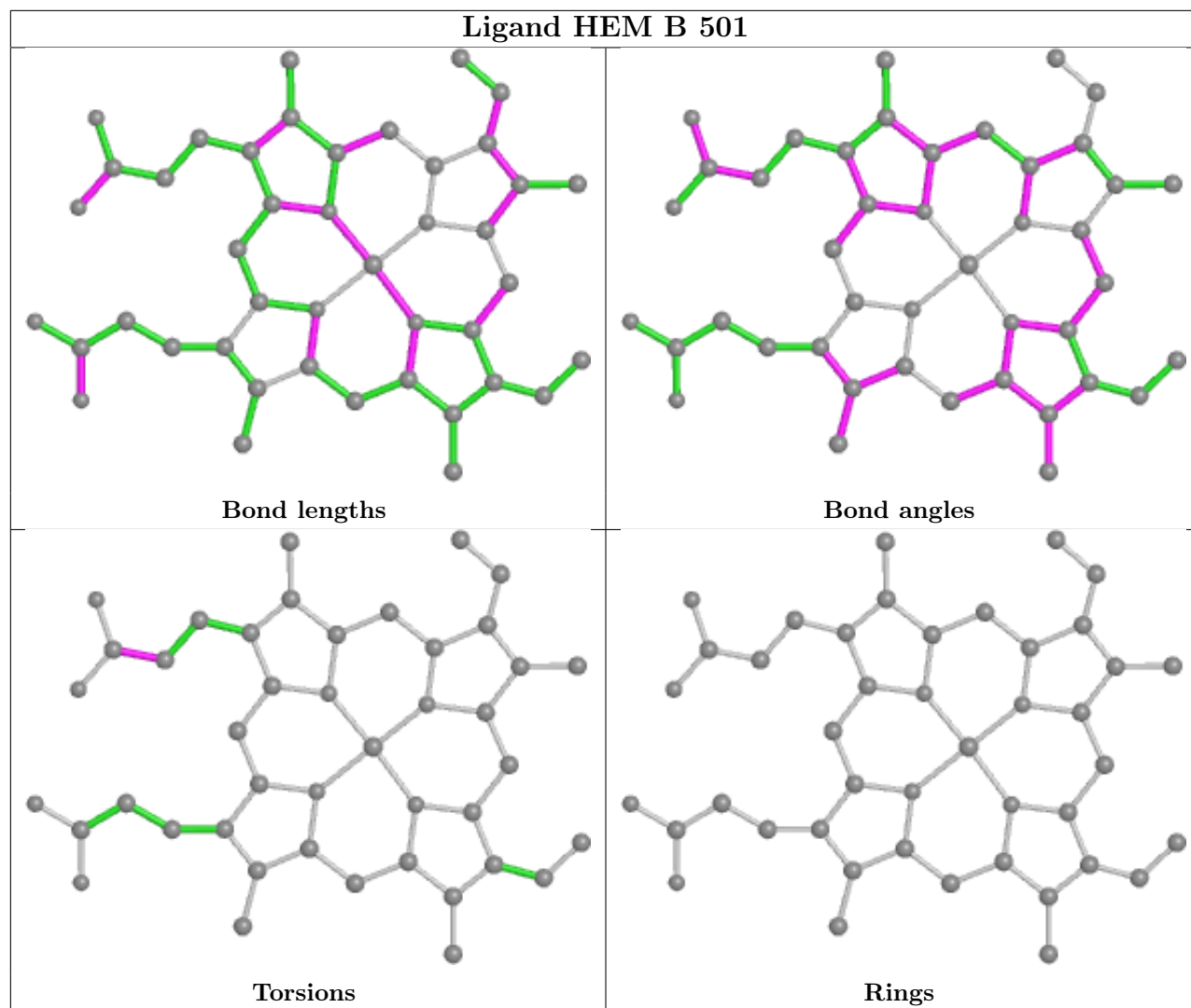
Mol	Chain	Res	Type	Atoms
2	A	501	HEM	CAA-CBA-CGA-O1A

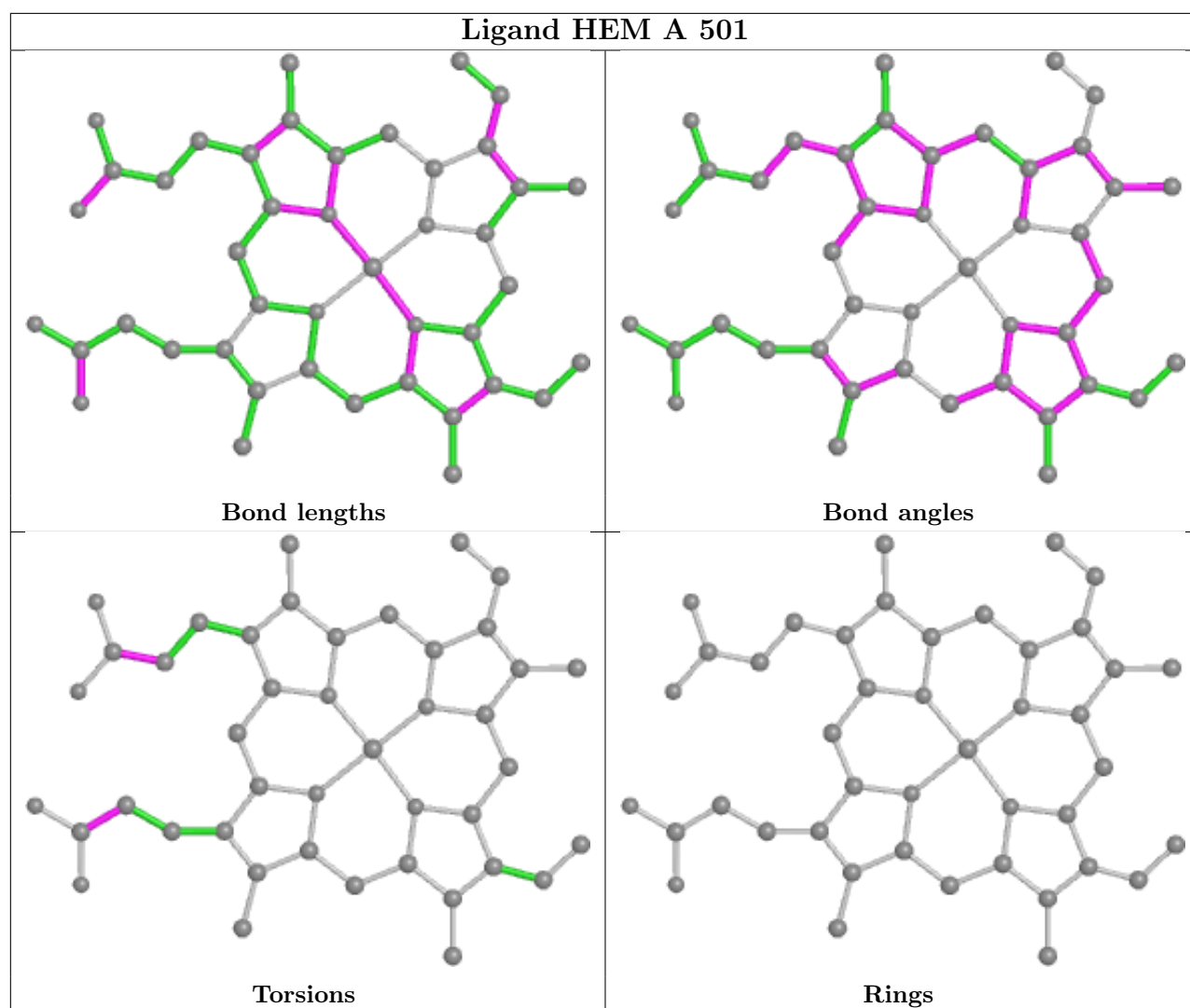
There are no ring outliers.

2 monomers are involved in 7 short contacts:

Mol	Chain	Res	Type	Clashes	Symm-Clashes
3	A	502	SYN	3	0
3	B	502	SYN	4	0

The following is a two-dimensional graphical depiction of Mogul quality analysis of bond lengths, bond angles, torsion angles, and ring geometry for all instances of the Ligand of Interest. In addition, ligands with molecular weight > 250 and outliers as shown on the validation Tables will also be included. For torsion angles, if less than 5% of the Mogul distribution of torsion angles is within 10 degrees of the torsion angle in question, then that torsion angle is considered an outlier. Any bond that is central to one or more torsion angles identified as an outlier by Mogul will be highlighted in the graph. For rings, the root-mean-square deviation (RMSD) between the ring in question and similar rings identified by Mogul is calculated over all ring torsion angles. If the average RMSD is greater than 60 degrees and the minimal RMSD between the ring in question and any Mogul-identified rings is also greater than 60 degrees, then that ring is considered an outlier. The outliers are highlighted in purple. The color gray indicates Mogul did not find sufficient equivalents in the CSD to analyse the geometry.





5.7 Other polymers [i](#)

There are no such residues in this entry.

5.8 Polymer linkage issues [i](#)

There are no chain breaks in this entry.

6 Fit of model and data

6.1 Protein, DNA and RNA chains

In the following table, the column labelled ‘#RSRZ > 2’ contains the number (and percentage) of RSRZ outliers, followed by percent RSRZ outliers for the chain as percentile scores relative to all X-ray entries and entries of similar resolution. The OWAB column contains the minimum, median, 95th percentile and maximum values of the occupancy-weighted average B-factor per residue. The column labelled ‘Q < 0.9’ lists the number of (and percentage) of residues with an average occupancy less than 0.9.

Mol	Chain	Analysed	<RSRZ>	#RSRZ>2	OWAB(Å ²)	Q<0.9
1	A	442/455 (97%)	-0.10	20 (4%) 33 37	9, 15, 50, 125	1 (0%)
1	B	441/455 (96%)	-0.05	20 (4%) 33 37	9, 16, 44, 104	0
All	All	883/910 (97%)	-0.08	40 (4%) 33 37	9, 16, 49, 125	1 (0%)

All (40) RSRZ outliers are listed below:

Mol	Chain	Res	Type	RSRZ
1	B	2	ILE	7.2
1	B	185	MET	6.3
1	B	227	GLY	5.8
1	A	199	ASP	5.3
1	B	229	GLN	5.0
1	A	2	ILE	5.0
1	B	228	GLU	4.4
1	A	229	GLN	4.1
1	A	1	THR	4.0
1	A	77	PHE	4.0
1	A	200	GLU	4.0
1	A	182	ASP	3.7
1	A	185	MET	3.6
1	B	46	GLY	3.6
1	A	202	LYS	3.6
1	A	227	GLY	3.5
1	A	228	GLU	3.4
1	B	199	ASP	3.4
1	A	180	ALA	3.4
1	B	77	PHE	3.3
1	A	170	PRO	3.2
1	B	200	GLU	3.1
1	B	202	LYS	2.8
1	B	225	ALA	2.8

Continued on next page...

Continued from previous page...

Mol	Chain	Res	Type	RSRZ
1	B	201	ASN	2.7
1	B	184	LYS	2.7
1	A	169	GLN	2.6
1	A	203	ARG	2.5
1	B	203	ARG	2.4
1	A	206	GLN	2.4
1	B	226	SER	2.3
1	B	231	ASP	2.2
1	B	182	ASP	2.2
1	A	201	ASN	2.2
1	A	183	GLU	2.1
1	A	369	ASP	2.1
1	B	4	GLU	2.1
1	B	383	SER	2.1
1	B	183	GLU	2.0
1	A	181	LEU	2.0

6.2 Non-standard residues in protein, DNA, RNA chains [i](#)

There are no non-standard protein/DNA/RNA residues in this entry.

6.3 Carbohydrates [i](#)

There are no monosaccharides in this entry.

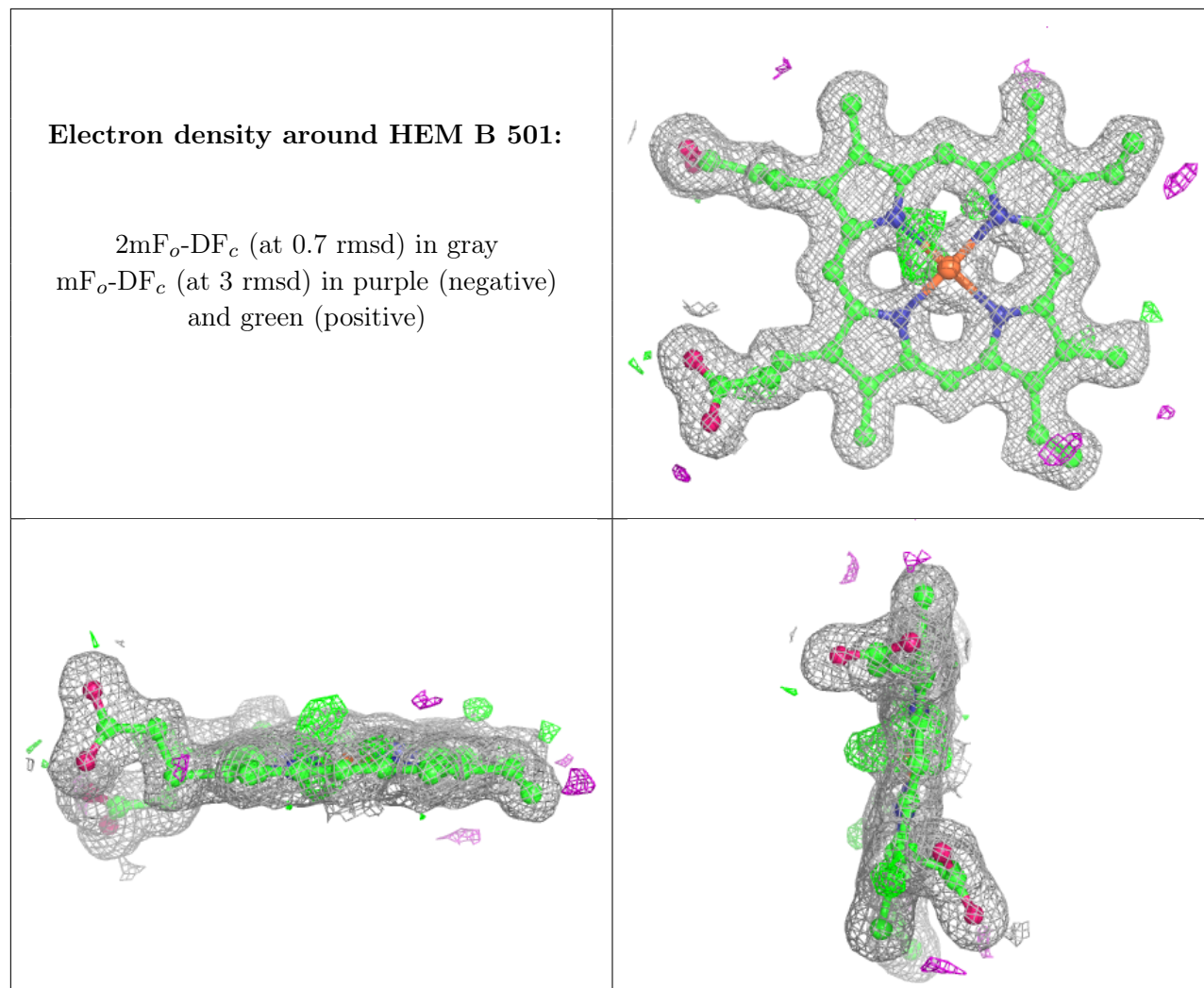
6.4 Ligands [i](#)

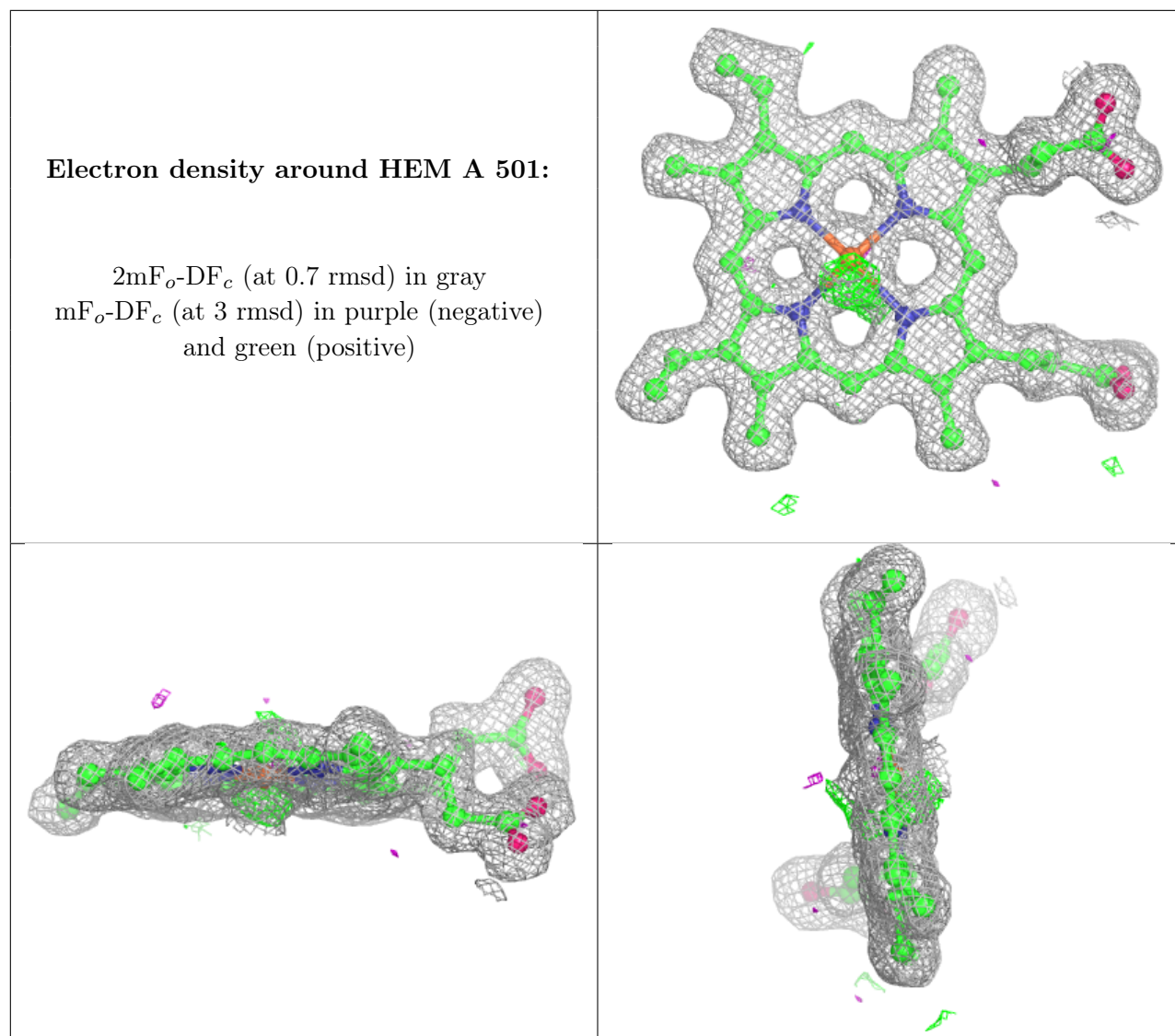
In the following table, the Atoms column lists the number of modelled atoms in the group and the number defined in the chemical component dictionary. The B-factors column lists the minimum, median, 95th percentile and maximum values of B factors of atoms in the group. The column labelled 'Q< 0.9' lists the number of atoms with occupancy less than 0.9.

Mol	Type	Chain	Res	Atoms	RSCC	RSR	B-factors(Å ²)	Q<0.9
3	SYN	B	502	8/8	0.87	0.13	21,32,37,38	0
3	SYN	A	502	8/8	0.89	0.13	19,30,38,41	0
4	CL	A	503	1/1	0.93	0.07	53,53,53,53	0
2	HEM	B	501	43/43	0.98	0.08	8,9,12,15	0
2	HEM	A	501	43/43	0.98	0.07	8,10,13,15	0

The following is a graphical depiction of the model fit to experimental electron density of all

instances of the Ligand of Interest. In addition, ligands with molecular weight > 250 and outliers as shown on the geometry validation Tables will also be included. Each fit is shown from different orientation to approximate a three-dimensional view.





6.5 Other polymers [i](#)

There are no such residues in this entry.