



# wwPDB X-ray Structure Validation Summary Report ⓘ

Jan 7, 2024 – 07:59 am GMT

PDB ID : 6HGB  
Title : Influenza A virus N6 neuraminidase native structure (Duck/England/56).  
Authors : Salinger, M.T.; Hobbs, J.R.; Murray, J.W.; Laver, W.G.; Kuhn, P.; Garman, E.F.  
Deposited on : 2018-08-23  
Resolution : 1.50 Å (reported)

This is a wwPDB X-ray Structure Validation Summary Report for a publicly released PDB entry.

We welcome your comments at [validation@mail.wwpdb.org](mailto:validation@mail.wwpdb.org)

A user guide is available at

<https://www.wwpdb.org/validation/2017/XrayValidationReportHelp>

with specific help available everywhere you see the ⓘ symbol.

The types of validation reports are described at

<http://www.wwpdb.org/validation/2017/FAQs#types>.

---

The following versions of software and data (see [references ⓘ](#)) were used in the production of this report:

MolProbity : 4.02b-467  
Mogul : 1.8.4, CSD as541be (2020)  
Xtriage (Phenix) : 1.13  
EDS : 2.36  
Percentile statistics : 20191225.v01 (using entries in the PDB archive December 25th 2019)  
Refmac : 5.8.0158  
CCP4 : 7.0.044 (Gargrove)  
Ideal geometry (proteins) : Engh & Huber (2001)  
Ideal geometry (DNA, RNA) : Parkinson et al. (1996)  
Validation Pipeline (wwPDB-VP) : 2.36

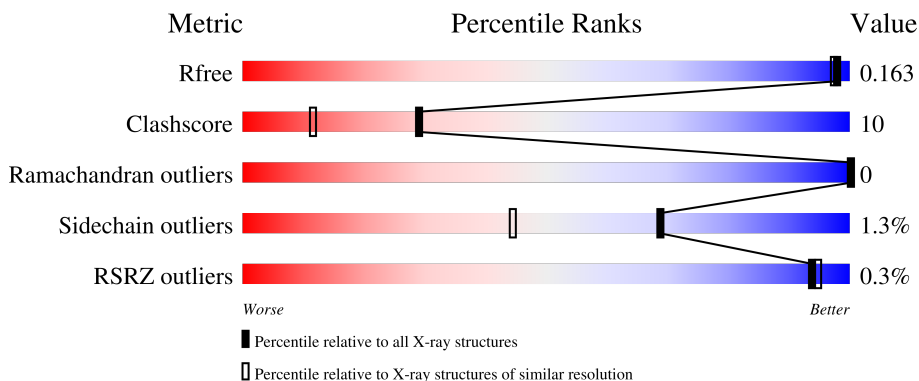
# 1 Overall quality at a glance

The following experimental techniques were used to determine the structure:

*X-RAY DIFFRACTION*

The reported resolution of this entry is 1.50 Å.

Percentile scores (ranging between 0-100) for global validation metrics of the entry are shown in the following graphic. The table shows the number of entries on which the scores are based.




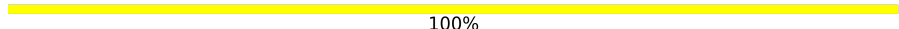
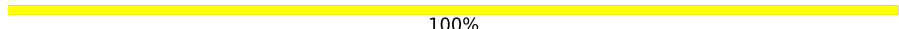
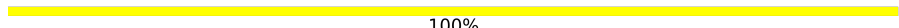
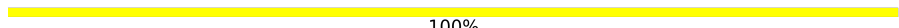
Metric	Whole archive (#Entries)	Similar resolution (#Entries, resolution range(Å))
$R_{free}$	130704	2936 (1.50-1.50)
Clashscore	141614	3144 (1.50-1.50)
Ramachandran outliers	138981	3066 (1.50-1.50)
Sidechain outliers	138945	3064 (1.50-1.50)
RSRZ outliers	127900	2884 (1.50-1.50)

The table below summarises the geometric issues observed across the polymeric chains and their fit to the electron density. The red, orange, yellow and green segments of the lower bar indicate the fraction of residues that contain outliers for  $\geq 3$ , 2, 1 and 0 types of geometric quality criteria respectively. A grey segment represents the fraction of residues that are not modelled. The numeric value for each fraction is indicated below the corresponding segment, with a dot representing fractions  $\leq 5\%$ . The upper red bar (where present) indicates the fraction of residues that have poor fit to the electron density. The numeric value is given above the bar.

Mol	Chain	Length	Quality of chain
1	A	389	88% 11% .
1	B	389	88% 12% .
1	C	389	87% 12% .
1	D	389	90% 9% .
2	E	2	100%

Continued on next page...

Continued from previous page...

Mol	Chain	Length	Quality of chain
2	F	2	 100%
2	H	2	 100%
2	J	2	 50% 50%
2	K	2	 100%
2	N	2	 100%
3	G	8	 100%
4	I	7	 71% 29%
5	L	6	 100%
5	M	6	 100%

The following table lists non-polymeric compounds, carbohydrate monomers and non-standard residues in protein, DNA, RNA chains that are outliers for geometric or electron-density-fit criteria:

Mol	Type	Chain	Res	Chirality	Geometry	Clashes	Electron density
2	NAG	F	2	-	-	-	X
2	NAG	J	2	-	-	-	X
6	GOL	C	517	-	-	X	-
8	PO4	B	518	-	-	-	X
9	PEG	A	522	-	-	X	-
9	PEG	B	520	-	-	X	-
9	PEG	B	523[B]	-	-	X	-
9	PEG	B	526	-	-	X	-
9	PEG	C	520	-	-	X	-
9	PEG	C	521	-	-	X	-
9	PEG	D	517	-	-	X	-

## 2 Entry composition [i](#)

There are 11 unique types of molecules in this entry. The entry contains 15249 atoms, of which 0 are hydrogens and 0 are deuteriums.

In the tables below, the ZeroOcc column contains the number of atoms modelled with zero occupancy, the AltConf column contains the number of residues with at least one atom in alternate conformation and the Trace column contains the number of residues modelled with at most 2 atoms.

- Molecule 1 is a protein called Neuraminidase.

Mol	Chain	Residues	Atoms					ZeroOcc	AltConf	Trace
			Total	C	N	O	S			
1	A	389	Total 3203	C 2003	N 563	O 604	S 33	0	29	0
1	B	389	Total 3197	C 1988	N 565	O 611	S 33	0	24	0
1	C	389	Total 3193	C 1998	N 562	O 601	S 32	0	27	0
1	D	389	Total 3206	C 2004	N 568	O 604	S 30	0	29	0

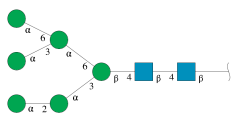
- Molecule 2 is an oligosaccharide called 2-acetamido-2-deoxy-beta-D-glucopyranose-(1-4)-2-acetamido-2-deoxy-beta-D-glucopyranose.



Mol	Chain	Residues	Atoms				ZeroOcc	AltConf	Trace
			Total	C	N	O			
2	E	2	Total 28	C 16	N 2	O 10	0	0	0
2	F	2	Total 28	C 16	N 2	O 10	0	0	0
2	H	2	Total 28	C 16	N 2	O 10	0	0	0
2	J	2	Total 28	C 16	N 2	O 10	0	0	0
2	K	2	Total 28	C 16	N 2	O 10	0	0	0
2	N	2	Total 28	C 16	N 2	O 10	0	0	0

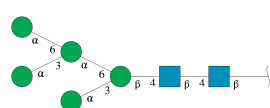
- Molecule 3 is an oligosaccharide called alpha-D-mannopyranose-(1-2)-alpha-D-mannopyranose-(1-3)-[alpha-D-mannopyranose-(1-3)-[alpha-D-mannopyranose-(1-6)]alpha-D-mannopyranose-(1-6)]beta-D-mannopyranose-(1-4)-2-acetamido-2-deoxy-beta-D-glucopyranose-(1-4)-2-

-acetamido-2-deoxy-beta-D-glucopyranose.



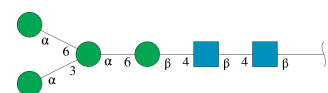
Mol	Chain	Residues	Atoms				ZeroOcc	AltConf	Trace
			Total	C	N	O			
3	G	8	94	52	2	40	0	0	0

- Molecule 4 is an oligosaccharide called alpha-D-mannopyranose-(1-3)-[alpha-D-mannopyranose-(1-6)]alpha-D-mannopyranose-(1-6)-[alpha-D-mannopyranose-(1-3)]beta-D-mannopyranose-(1-4)-2-acetamido-2-deoxy-beta-D-glucopyranose-(1-4)-2-acetamido-2-deoxy-beta-D-glucopyranose.



Mol	Chain	Residues	Atoms				ZeroOcc	AltConf	Trace
			Total	C	N	O			
4	I	7	83	46	2	35	0	0	0

- Molecule 5 is an oligosaccharide called alpha-D-mannopyranose-(1-3)-[alpha-D-mannopyranose-(1-6)]alpha-D-mannopyranose-(1-6)-beta-D-mannopyranose-(1-4)-2-acetamido-2-deoxy-beta-D-glucopyranose-(1-4)-2-acetamido-2-deoxy-beta-D-glucopyranose.



Mol	Chain	Residues	Atoms				ZeroOcc	AltConf	Trace
			Total	C	N	O			
5	L	6	72	40	2	30	0	0	0
5	M	6	72	40	2	30	0	0	0

- Molecule 6 is GLYCEROL (three-letter code: GOL) (formula: C<sub>3</sub>H<sub>8</sub>O<sub>3</sub>).



Mol	Chain	Residues	Atoms	ZeroOcc	AltConf
6	A	1	Total C O 12 6 6	0	1
6	A	1	Total C O 6 3 3	0	0
6	A	1	Total C O 12 6 6	0	1
6	A	1	Total C O 12 6 6	0	1
6	A	1	Total C O 6 3 3	0	0
6	A	1	Total C O 6 3 3	0	0
6	B	1	Total C O 6 3 3	0	0
6	B	1	Total C O 6 3 3	0	0
6	B	1	Total C O 6 3 3	0	0
6	B	1	Total C O 6 3 3	0	0
6	B	1	Total C O 6 3 3	0	0
6	B	1	Total C O 6 3 3	0	0
6	C	1	Total C O 6 3 3	0	0
6	C	1	Total C O 6 3 3	0	0

*Continued on next page...*

*Continued from previous page...*

Mol	Chain	Residues	Atoms	ZeroOcc	AltConf
6	C	1	Total C O 6 3 3	0	0
6	C	1	Total C O 6 3 3	0	0
6	C	1	Total C O 12 6 6	0	1
6	C	1	Total C O 12 6 6	0	1
6	C	1	Total C O 6 3 3	0	0
6	C	1	Total C O 6 3 3	0	0
6	D	1	Total C O 6 3 3	0	0
6	D	1	Total C O 6 3 3	0	0
6	D	1	Total C O 6 3 3	0	0
6	D	1	Total C O 6 3 3	0	0
6	D	1	Total C O 6 3 3	0	0

- Molecule 7 is CALCIUM ION (three-letter code: CA) (formula: Ca).

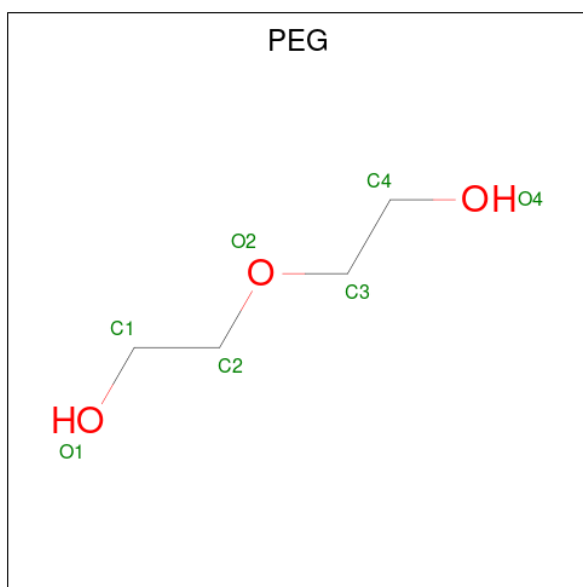
Mol	Chain	Residues	Atoms	ZeroOcc	AltConf
7	A	1	Total Ca 1 1	0	0
7	B	1	Total Ca 1 1	0	0
7	C	1	Total Ca 1 1	0	0
7	D	1	Total Ca 1 1	0	0

- Molecule 8 is PHOSPHATE ION (three-letter code: PO4) (formula: O<sub>4</sub>P).



Mol	Chain	Residues	Atoms	ZeroOcc	AltConf
8	A	1	Total O P 5 4 1	0	0
8	A	1	Total O P 5 4 1	0	0
8	B	1	Total O P 5 4 1	0	0

- Molecule 9 is DI(HYDROXYETHYL)ETHER (three-letter code: PEG) (formula: C<sub>4</sub>H<sub>10</sub>O<sub>3</sub>).



Mol	Chain	Residues	Atoms	ZeroOcc	AltConf
9	A	1	Total C O 7 4 3	0	0

*Continued on next page...*



*Continued from previous page...*

Mol	Chain	Residues	Atoms			ZeroOcc	AltConf
9	B	1	Total	C	O	0	0
			7	4	3		
9	B	1	Total	C	O	0	0
			7	4	3		
9	B	1	Total	C	O	0	0
			7	4	3		
9	B	1	Total	C	O	0	0
			7	4	3		
9	B	1	Total	C	O	0	1
			14	8	6		
9	B	1	Total	C	O	0	0
			7	4	3		
9	B	1	Total	C	O	0	0
			7	4	3		
9	B	1	Total	C	O	0	0
			7	4	3		
9	C	1	Total	C	O	0	0
			7	4	3		
9	C	1	Total	C	O	0	0
			7	4	3		
9	C	1	Total	C	O	0	0
			7	4	3		
9	C	1	Total	C	O	0	0
			7	4	3		
9	C	1	Total	C	O	0	0
			7	4	3		
9	D	1	Total	C	O	0	0
			7	4	3		
9	D	1	Total	C	O	0	0
			7	4	3		
9	D	1	Total	C	O	0	0
			7	4	3		
9	D	1	Total	C	O	0	0
			7	4	3		
9	D	1	Total	C	O	0	0
			7	4	3		

- Molecule 10 is 2-acetamido-2-deoxy-beta-D-glucopyranose (three-letter code: NAG) (formula: C<sub>8</sub>H<sub>15</sub>NO<sub>6</sub>).



Mol	Chain	Residues	Atoms				ZeroOcc	AltConf
10	B	1	Total	C	N	O	0	0
			14	8	1	5		
10	D	1	Total	C	N	O	0	0
			14	8	1	5		

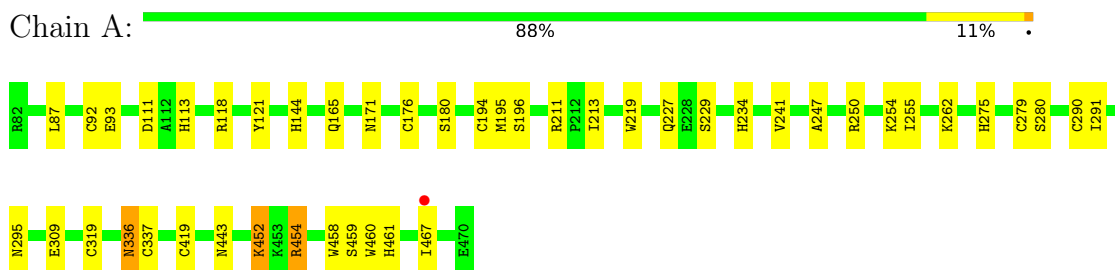
- Molecule 11 is water.

Mol	Chain	Residues	Atoms		ZeroOcc	AltConf
11	A	391	Total	O	0	1
			392	392		
11	B	407	Total	O	0	0
			407	407		
11	C	405	Total	O	0	4
			409	409		
11	D	384	Total	O	0	2
			386	386		

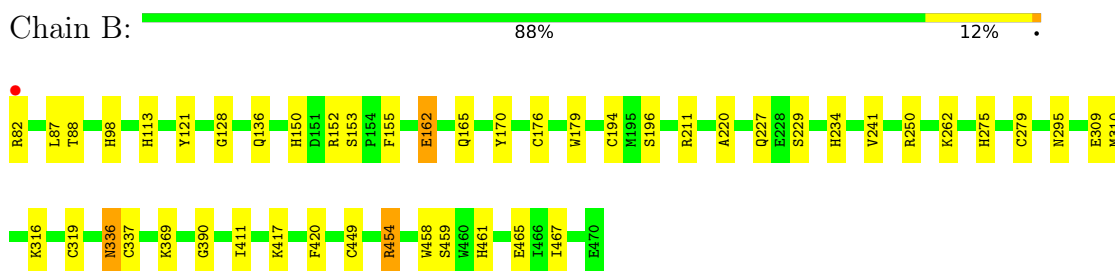
### 3 Residue-property plots

These plots are drawn for all protein, RNA, DNA and oligosaccharide chains in the entry. The first graphic for a chain summarises the proportions of the various outlier classes displayed in the second graphic. The second graphic shows the sequence view annotated by issues in geometry and electron density. Residues are color-coded according to the number of geometric quality criteria for which they contain at least one outlier: green = 0, yellow = 1, orange = 2 and red = 3 or more. A red dot above a residue indicates a poor fit to the electron density ( $RSRZ > 2$ ). Stretches of 2 or more consecutive residues without any outlier are shown as a green connector. Residues present in the sample, but not in the model, are shown in grey.

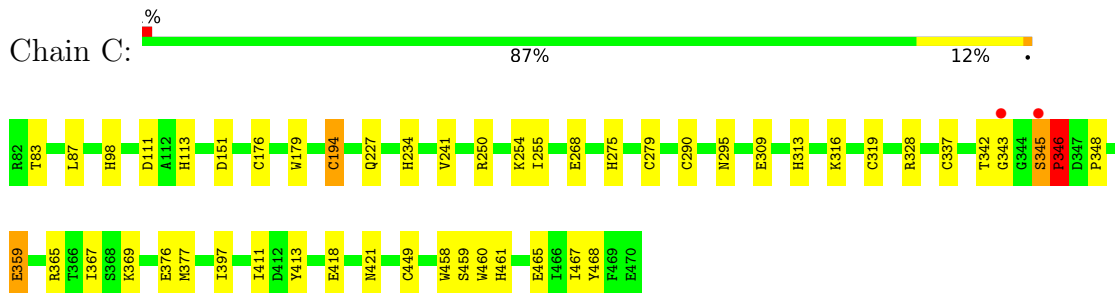
- Molecule 1: Neuraminidase



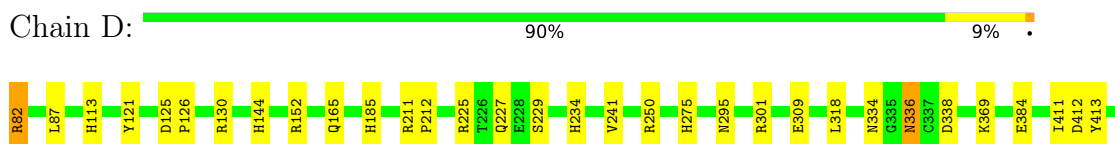
- Molecule 1: Neuraminidase



- Molecule 1: Neuraminidase



- Molecule 1: Neuraminidase





- Molecule 2: 2-acetamido-2-deoxy-beta-D-glucopyranose-(1-4)-2-acetamido-2-deoxy-beta-D-glucopyranose

Chain E: 100%

MAG1  
MAG2

- Molecule 2: 2-acetamido-2-deoxy-beta-D-glucopyranose-(1-4)-2-acetamido-2-deoxy-beta-D-glucopyranose

Chain F: 100%

MAG1  
MAG2

- Molecule 2: 2-acetamido-2-deoxy-beta-D-glucopyranose-(1-4)-2-acetamido-2-deoxy-beta-D-glucopyranose

Chain H: 100%

MAG1  
MAG2

- Molecule 2: 2-acetamido-2-deoxy-beta-D-glucopyranose-(1-4)-2-acetamido-2-deoxy-beta-D-glucopyranose

Chain J: 50% 50%

MAG1  
MAG2

- Molecule 2: 2-acetamido-2-deoxy-beta-D-glucopyranose-(1-4)-2-acetamido-2-deoxy-beta-D-glucopyranose

Chain K: 100%


MAG1  
MAG2

- Molecule 2: 2-acetamido-2-deoxy-beta-D-glucopyranose-(1-4)-2-acetamido-2-deoxy-beta-D-glucopyranose

Chain N: 100%

MAG1  
MAG2

- Molecule 3: alpha-D-mannopyranose-(1-2)-alpha-D-mannopyranose-(1-3)-[alpha-D-mannopyranose-(1-3)-[alpha-D-mannopyranose-(1-6)]alpha-D-mannopyranose-(1-6)]beta-D-mannopyranose-(1-4)-2-acetamido-2-deoxy-beta-D-glucopyranose-(1-4)-2-acetamido-2-deoxy-beta-D-glucopyranose

Chain G:  100%

MAG1  
MAG2  
BMA3  
MAN4  
MAN5  
MAN6  
MAN7  
MAN8

- Molecule 4: alpha-D-mannopyranose-(1-3)-[alpha-D-mannopyranose-(1-6)]alpha-D-mannopyranose-(1-6)-[alpha-D-mannopyranose-(1-3)]beta-D-mannopyranose-(1-4)-2-acetamido-2-deoxy-beta-D-glucopyranose-(1-4)-2-acetamido-2-deoxy-beta-D-glucopyranose

Chain I:  71%  29%

MAG1  
MAG2  
BMA3  
MAN4  
MAN5  
MAN6  
MAN7

- Molecule 5: alpha-D-mannopyranose-(1-3)-[alpha-D-mannopyranose-(1-6)]alpha-D-mannopyranose-(1-6)-beta-D-mannopyranose-(1-4)-2-acetamido-2-deoxy-beta-D-glucopyranose-(1-4)-2-acetamido-2-deoxy-beta-D-glucopyranose

Chain L:  100%

MAG1  
MAG2  
BMA3  
MAN4  
MAN5  
MAN6

- Molecule 5: alpha-D-mannopyranose-(1-3)-[alpha-D-mannopyranose-(1-6)]alpha-D-mannopyranose-(1-6)-beta-D-mannopyranose-(1-4)-2-acetamido-2-deoxy-beta-D-glucopyranose-(1-4)-2-acetamido-2-deoxy-beta-D-glucopyranose

Chain M:  100%

MAG1  
MAG2  
BMA3  
MAN4  
MAN5  
MAN6

## 4 Data and refinement statistics i

Property	Value	Source
Space group	P 1 21 1	Depositor
Cell constants a, b, c, $\alpha$ , $\beta$ , $\gamma$	106.20Å 73.90Å 106.40Å 90.00° 90.30° 90.00°	Depositor
Resolution (Å)	30.68 – 1.50 30.66 – 1.50	Depositor EDS
% Data completeness (in resolution range)	91.8 (30.68-1.50) 91.8 (30.66-1.50)	Depositor EDS
$R_{merge}$	(Not available)	Depositor
$R_{sym}$	0.09	Depositor
$\langle I/\sigma(I) \rangle$ <sup>1</sup>	2.70 (at 1.50Å)	Xtrriage
Refinement program	REFMAC 5.8.0230	Depositor
R, $R_{free}$	0.139 , 0.161 0.141 , 0.163	Depositor DCC
$R_{free}$ test set	11165 reflections (4.61%)	wwPDB-VP
Wilson B-factor (Å <sup>2</sup> )	9.8	Xtrriage
Anisotropy	1.297	Xtrriage
Bulk solvent $k_{sol}$ (e/Å <sup>3</sup> ), $B_{sol}$ (Å <sup>2</sup> )	0.40 , 55.2	EDS
L-test for twinning <sup>2</sup>	$\langle  L  \rangle = 0.49$ , $\langle L^2 \rangle = 0.32$	Xtrriage
Estimated twinning fraction	0.005 for l,k,-h 0.016 for h,-k,-l 0.014 for l,-k,h	Xtrriage
$F_o, F_c$ correlation	0.97	EDS
Total number of atoms	15249	wwPDB-VP
Average B, all atoms (Å <sup>2</sup> )	15.0	wwPDB-VP

Xtrriage's analysis on translational NCS is as follows: *The largest off-origin peak in the Patterson function is 3.48% of the height of the origin peak. No significant pseudotranslation is detected.*

<sup>1</sup>Intensities estimated from amplitudes.

<sup>2</sup>Theoretical values of  $\langle |L| \rangle$ ,  $\langle L^2 \rangle$  for acentric reflections are 0.5, 0.333 respectively for untwinned datasets, and 0.375, 0.2 for perfectly twinned datasets.

## 5 Model quality [i](#)

### 5.1 Standard geometry [i](#)

Bond lengths and bond angles in the following residue types are not validated in this section: GOL, CA, MAN, PEG, NAG, BMA, PO4

The Z score for a bond length (or angle) is the number of standard deviations the observed value is removed from the expected value. A bond length (or angle) with  $|Z| > 5$  is considered an outlier worth inspection. RMSZ is the root-mean-square of all Z scores of the bond lengths (or angles).

Mol	Chain	Bond lengths		Bond angles	
		RMSZ	# Z  >5	RMSZ	# Z  >5
1	A	0.67	1/3313 (0.0%)	0.83	1/4491 (0.0%)
1	B	0.66	0/3285	0.83	3/4451 (0.1%)
1	C	0.68	0/3304	0.83	1/4480 (0.0%)
1	D	0.67	0/3323	0.83	2/4505 (0.0%)
All	All	0.67	1/13225 (0.0%)	0.83	7/17927 (0.0%)

Chiral center outliers are detected by calculating the chiral volume of a chiral center and verifying if the center is modelled as a planar moiety or with the opposite hand. A planarity outlier is detected by checking planarity of atoms in a peptide group, atoms in a mainchain group or atoms of a sidechain that are expected to be planar.

Mol	Chain	#Chirality outliers	#Planarity outliers
1	A	0	2
1	B	0	1
1	D	0	6
All	All	0	9

All (1) bond length outliers are listed below:

Mol	Chain	Res	Type	Atoms	Z	Observed(Å)	Ideal(Å)
1	A	280	SER	CA-CB	-5.49	1.44	1.52

The worst 5 of 7 bond angle outliers are listed below:

Mol	Chain	Res	Type	Atoms	Z	Observed(°)	Ideal(°)
1	C	346	PRO	N-CA-CB	-8.14	93.53	103.30
1	B	250	ARG	NE-CZ-NH1	6.44	123.52	120.30
1	B	250	ARG	NE-CZ-NH2	-6.37	117.11	120.30
1	A	211	ARG	CD-NE-CZ	5.60	131.44	123.60
1	B	211	ARG	NE-CZ-NH2	-5.46	117.57	120.30

There are no chirality outliers.

5 of 9 planarity outliers are listed below:

Mol	Chain	Res	Type	Group
1	A	250	ARG	Sidechain
1	A	454[A]	ARG	Sidechain
1	B	454	ARG	Sidechain
1	D	152	ARG	Sidechain
1	D	211[A]	ARG	Sidechain

## 5.2 Too-close contacts [i](#)

In the following table, the Non-H and H(model) columns list the number of non-hydrogen atoms and hydrogen atoms in the chain respectively. The H(added) column lists the number of hydrogen atoms added and optimized by MolProbity. The Clashes column lists the number of clashes within the asymmetric unit, whereas Symm-Clashes lists symmetry-related clashes.

Mol	Chain	Non-H	H(model)	H(added)	Clashes	Symm-Clashes
1	A	3203	0	3109	54	0
1	B	3197	0	3065	65	0
1	C	3193	0	3095	70	0
1	D	3206	0	3111	46	0
2	E	28	0	25	0	0
2	F	28	0	25	0	0
2	H	28	0	25	0	0
2	J	28	0	25	3	0
2	K	28	0	25	0	0
2	N	28	0	25	0	0
3	G	94	0	79	0	0
4	I	83	0	70	3	0
5	L	72	0	61	0	0
5	M	72	0	61	0	0
6	A	54	0	72	5	0
6	B	36	0	48	3	0
6	C	60	0	80	22	0
6	D	30	0	40	5	0
7	A	1	0	0	0	0
7	B	1	0	0	0	0
7	C	1	0	0	0	0
7	D	1	0	0	0	0
8	A	10	0	0	0	0
8	B	5	0	0	0	0
9	A	7	0	10	5	0
9	B	63	0	90	27	0

*Continued on next page...*



Continued from previous page...

Mol	Chain	Non-H	H(model)	H(added)	Clashes	Symm-Clashes
9	C	28	0	39	19	0
9	D	42	0	59	14	0
10	B	14	0	13	0	0
10	D	14	0	13	0	0
11	A	392	0	0	12	0
11	B	407	0	0	21	0
11	C	409	0	0	12	0
11	D	386	0	0	10	0
All	All	15249	0	13265	260	0

The all-atom clashscore is defined as the number of clashes found per 1000 atoms (including hydrogen atoms). The all-atom clashscore for this structure is 10.

The worst 5 of 260 close contacts within the same asymmetric unit are listed below, sorted by their clash magnitude.

Atom-1	Atom-2	Interatomic distance (Å)	Clash overlap (Å)
1:A:213[B]:ILE:HD12	1:A:213[B]:ILE:O	1.32	1.29
9:B:523[B]:PEG:O4	9:B:523[B]:PEG:H12	1.22	1.25
1:B:319:CYS:SG	1:B:337[B]:CYS:HB3	1.84	1.17
9:B:523[B]:PEG:O4	9:B:523[B]:PEG:C1	1.94	1.15
9:A:522:PEG:H32	11:A:627:HOH:O	1.46	1.15

There are no symmetry-related clashes.

## 5.3 Torsion angles [i](#)

### 5.3.1 Protein backbone [i](#)

In the following table, the Percentiles column shows the percent Ramachandran outliers of the chain as a percentile score with respect to all X-ray entries followed by that with respect to entries of similar resolution.

The Analysed column shows the number of residues for which the backbone conformation was analysed, and the total number of residues.

Mol	Chain	Analysed	Favoured	Allowed	Outliers	Percentiles	
1	A	417/389 (107%)	400 (96%)	17 (4%)	0	100	100
1	B	414/389 (106%)	401 (97%)	13 (3%)	0	100	100
1	C	414/389 (106%)	399 (96%)	15 (4%)	0	100	100

Continued on next page...

Continued from previous page...

Mol	Chain	Analysed	Favoured	Allowed	Outliers	Percentiles	
1	D	416/389 (107%)	405 (97%)	11 (3%)	0	100	100
All	All	1661/1556 (107%)	1605 (97%)	56 (3%)	0	100	100

There are no Ramachandran outliers to report.

### 5.3.2 Protein sidechains [i](#)

In the following table, the Percentiles column shows the percent sidechain outliers of the chain as a percentile score with respect to all X-ray entries followed by that with respect to entries of similar resolution.

The Analysed column shows the number of residues for which the sidechain conformation was analysed, and the total number of residues.

Mol	Chain	Analysed	Rotameric	Outliers	Percentiles	
1	A	361/331 (109%)	358 (99%)	3 (1%)	81	66
1	B	358/331 (108%)	351 (98%)	7 (2%)	55	25
1	C	358/331 (108%)	349 (98%)	9 (2%)	47	18
1	D	360/331 (109%)	356 (99%)	4 (1%)	73	53
All	All	1437/1324 (108%)	1414 (98%)	23 (2%)	69	36

5 of 23 residues with a non-rotameric sidechain are listed below:

Mol	Chain	Res	Type
1	C	346	PRO
1	C	458[A]	TRP
1	C	359[B]	GLU
1	C	458[B]	TRP
1	B	162[B]	GLU

Sometimes sidechains can be flipped to improve hydrogen bonding and reduce clashes. 5 of 41 such sidechains are listed below:

Mol	Chain	Res	Type
1	C	334	ASN
1	D	144	HIS
1	C	400	ASN
1	C	443	ASN
1	D	234	HIS

### 5.3.3 RNA [i](#)

There are no RNA molecules in this entry.

## 5.4 Non-standard residues in protein, DNA, RNA chains [i](#)

There are no non-standard protein/DNA/RNA residues in this entry.

## 5.5 Carbohydrates [i](#)

39 monosaccharides are modelled in this entry.

In the following table, the Counts columns list the number of bonds (or angles) for which Mogul statistics could be retrieved, the number of bonds (or angles) that are observed in the model and the number of bonds (or angles) that are defined in the Chemical Component Dictionary. The Link column lists molecule types, if any, to which the group is linked. The Z score for a bond length (or angle) is the number of standard deviations the observed value is removed from the expected value. A bond length (or angle) with  $|Z| > 2$  is considered an outlier worth inspection. RMSZ is the root-mean-square of all Z scores of the bond lengths (or angles).

Mol	Type	Chain	Res	Link	Bond lengths			Bond angles		
					Counts	RMSZ	# Z  > 2	Counts	RMSZ	# Z  > 2
2	NAG	E	1	2,1	14,14,15	0.79	0	17,19,21	1.35	2 (11%)
2	NAG	E	2	2	14,14,15	0.49	0	17,19,21	1.26	3 (17%)
2	NAG	F	1	2,1	14,14,15	1.11	2 (14%)	17,19,21	1.36	1 (5%)
2	NAG	F	2	2	14,14,15	0.41	0	17,19,21	1.74	5 (29%)
3	NAG	G	1	3,1	14,14,15	0.91	0	17,19,21	2.22	4 (23%)
3	NAG	G	2	3	14,14,15	0.58	0	17,19,21	1.39	4 (23%)
3	BMA	G	3	3	11,11,12	0.67	0	15,15,17	1.31	3 (20%)
3	MAN	G	4	3	11,11,12	0.59	0	15,15,17	1.25	2 (13%)
3	MAN	G	5	3	11,11,12	0.68	0	15,15,17	1.97	4 (26%)
3	MAN	G	6	3	11,11,12	1.03	1 (9%)	15,15,17	1.01	0
3	MAN	G	7	3	11,11,12	0.75	0	15,15,17	1.55	3 (20%)
3	MAN	G	8	3	11,11,12	0.85	0	15,15,17	1.27	3 (20%)
2	NAG	H	1	2,1	14,14,15	1.02	1 (7%)	17,19,21	1.17	2 (11%)
2	NAG	H	2	2	14,14,15	0.57	0	17,19,21	1.86	4 (23%)
4	NAG	I	1	4,1	14,14,15	0.81	0	17,19,21	1.75	6 (35%)
4	NAG	I	2	4	14,14,15	0.87	0	17,19,21	1.55	5 (29%)
4	BMA	I	3	4	11,11,12	0.57	0	15,15,17	1.19	2 (13%)
4	MAN	I	4	4	11,11,12	1.17	2 (18%)	15,15,17	1.40	2 (13%)

Mol	Type	Chain	Res	Link	Bond lengths			Bond angles		
					Counts	RMSZ	# Z  > 2	Counts	RMSZ	# Z  > 2
4	MAN	I	5	4	11,11,12	0.81	0	15,15,17	1.07	2 (13%)
4	MAN	I	6	4	11,11,12	0.55	0	15,15,17	1.77	4 (26%)
4	MAN	I	7	4	11,11,12	0.71	0	15,15,17	1.81	5 (33%)
2	NAG	J	1	2,1	14,14,15	1.07	1 (7%)	17,19,21	2.24	4 (23%)
2	NAG	J	2	2	14,14,15	1.09	1 (7%)	17,19,21	2.75	4 (23%)
2	NAG	K	1	2,1	14,14,15	1.24	1 (7%)	17,19,21	1.44	2 (11%)
2	NAG	K	2	2	14,14,15	0.64	0	17,19,21	1.42	3 (17%)
5	NAG	L	1	1,5	14,14,15	0.71	0	17,19,21	1.97	4 (23%)
5	NAG	L	2	5	14,14,15	0.85	0	17,19,21	1.62	5 (29%)
5	BMA	L	3	5	11,11,12	0.64	0	15,15,17	1.19	2 (13%)
5	MAN	L	4	5	11,11,12	0.83	1 (9%)	15,15,17	1.28	1 (6%)
5	MAN	L	5	5	11,11,12	0.67	0	15,15,17	1.52	2 (13%)
5	MAN	L	6	5	11,11,12	0.88	0	15,15,17	1.85	4 (26%)
5	NAG	M	1	1,5	14,14,15	0.90	0	17,19,21	1.89	2 (11%)
5	NAG	M	2	5	14,14,15	0.75	0	17,19,21	1.49	3 (17%)
5	BMA	M	3	5	11,11,12	0.93	0	15,15,17	1.33	1 (6%)
5	MAN	M	4	5	11,11,12	0.81	0	15,15,17	1.21	1 (6%)
5	MAN	M	5	5	11,11,12	0.75	0	15,15,17	1.52	3 (20%)
5	MAN	M	6	5	11,11,12	0.52	0	15,15,17	1.58	3 (20%)
2	NAG	N	1	2,1	14,14,15	0.96	0	17,19,21	0.83	1 (5%)
2	NAG	N	2	2	14,14,15	0.63	0	17,19,21	1.71	3 (17%)

In the following table, the Chirals column lists the number of chiral outliers, the number of chiral centers analysed, the number of these observed in the model and the number defined in the Chemical Component Dictionary. Similar counts are reported in the Torsion and Rings columns. '-' means no outliers of that kind were identified.

Mol	Type	Chain	Res	Link	Chirals	Torsions	Rings
2	NAG	E	1	2,1	-	0/6/23/26	0/1/1/1
2	NAG	E	2	2	-	0/6/23/26	0/1/1/1
2	NAG	F	1	2,1	-	0/6/23/26	0/1/1/1
2	NAG	F	2	2	-	0/6/23/26	0/1/1/1
3	NAG	G	1	3,1	-	0/6/23/26	0/1/1/1
3	NAG	G	2	3	-	0/6/23/26	0/1/1/1
3	BMA	G	3	3	-	0/2/19/22	0/1/1/1
3	MAN	G	4	3	-	0/2/19/22	0/1/1/1
3	MAN	G	5	3	-	0/2/19/22	0/1/1/1
3	MAN	G	6	3	-	0/2/19/22	0/1/1/1

Continued on next page...

Continued from previous page...

Mol	Type	Chain	Res	Link	Chirals	Torsions	Rings
3	MAN	G	7	3	-	1/2/19/22	0/1/1/1
3	MAN	G	8	3	-	0/2/19/22	0/1/1/1
2	NAG	H	1	2,1	-	0/6/23/26	0/1/1/1
2	NAG	H	2	2	-	0/6/23/26	0/1/1/1
4	NAG	I	1	4,1	-	0/6/23/26	0/1/1/1
4	NAG	I	2	4	-	0/6/23/26	0/1/1/1
4	BMA	I	3	4	-	0/2/19/22	0/1/1/1
4	MAN	I	4	4	-	0/2/19/22	0/1/1/1
4	MAN	I	5	4	-	0/2/19/22	0/1/1/1
4	MAN	I	6	4	-	0/2/19/22	0/1/1/1
4	MAN	I	7	4	-	2/2/19/22	0/1/1/1
2	NAG	J	1	2,1	-	1/6/23/26	0/1/1/1
2	NAG	J	2	2	-	2/6/23/26	0/1/1/1
2	NAG	K	1	2,1	-	0/6/23/26	0/1/1/1
2	NAG	K	2	2	-	2/6/23/26	0/1/1/1
5	NAG	L	1	1,5	-	0/6/23/26	0/1/1/1
5	NAG	L	2	5	-	0/6/23/26	0/1/1/1
5	BMA	L	3	5	-	0/2/19/22	0/1/1/1
5	MAN	L	4	5	-	0/2/19/22	0/1/1/1
5	MAN	L	5	5	-	0/2/19/22	0/1/1/1
5	MAN	L	6	5	-	0/2/19/22	0/1/1/1
5	NAG	M	1	1,5	-	0/6/23/26	0/1/1/1
5	NAG	M	2	5	-	0/6/23/26	0/1/1/1
5	BMA	M	3	5	-	0/2/19/22	0/1/1/1
5	MAN	M	4	5	-	0/2/19/22	0/1/1/1
5	MAN	M	5	5	-	0/2/19/22	0/1/1/1
5	MAN	M	6	5	-	2/2/19/22	0/1/1/1
2	NAG	N	1	2,1	-	0/6/23/26	0/1/1/1
2	NAG	N	2	2	-	0/6/23/26	0/1/1/1

The worst 5 of 10 bond length outliers are listed below:

Mol	Chain	Res	Type	Atoms	Z	Observed(Å)	Ideal(Å)
2	J	2	NAG	C1-C2	2.89	1.56	1.52
4	I	4	MAN	O5-C1	-2.77	1.39	1.43
2	F	1	NAG	O5-C1	-2.77	1.39	1.43
3	G	6	MAN	C2-C3	2.70	1.56	1.52
2	J	1	NAG	O4-C4	2.66	1.49	1.43

The worst 5 of 114 bond angle outliers are listed below:

Mol	Chain	Res	Type	Atoms	Z	Observed(°)	Ideal(°)
2	J	2	NAG	C1-C2-N2	8.26	124.60	110.49
3	G	1	NAG	O5-C1-C2	-7.04	100.17	111.29
2	J	1	NAG	O5-C5-C6	-6.69	96.72	107.20
5	M	1	NAG	O5-C1-C2	-6.48	101.06	111.29
5	L	1	NAG	O5-C1-C2	-6.12	101.62	111.29

There are no chirality outliers.

5 of 10 torsion outliers are listed below:

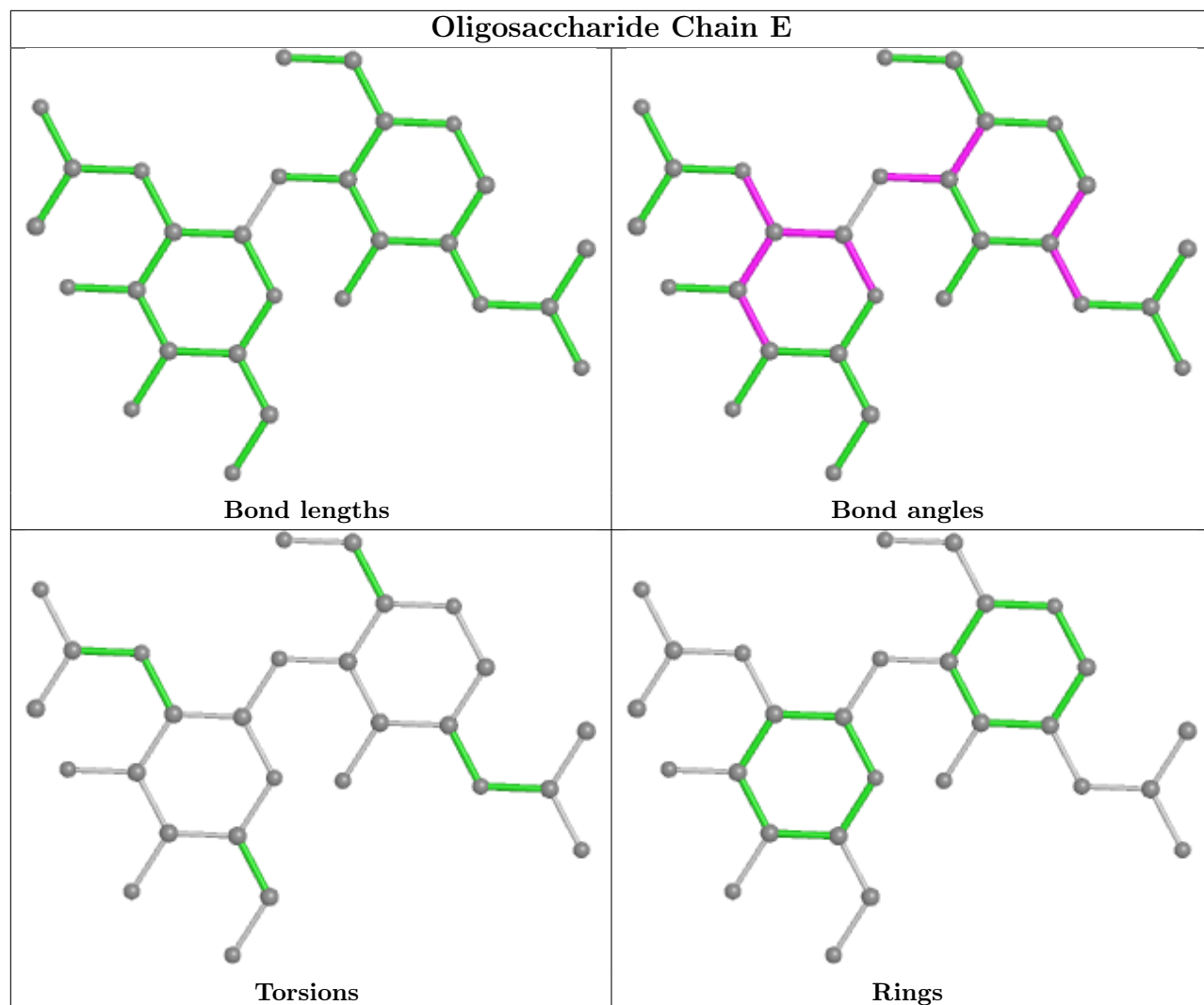
Mol	Chain	Res	Type	Atoms
4	I	7	MAN	O5-C5-C6-O6
4	I	7	MAN	C4-C5-C6-O6
5	M	6	MAN	O5-C5-C6-O6
2	J	2	NAG	O5-C5-C6-O6
5	M	6	MAN	C4-C5-C6-O6

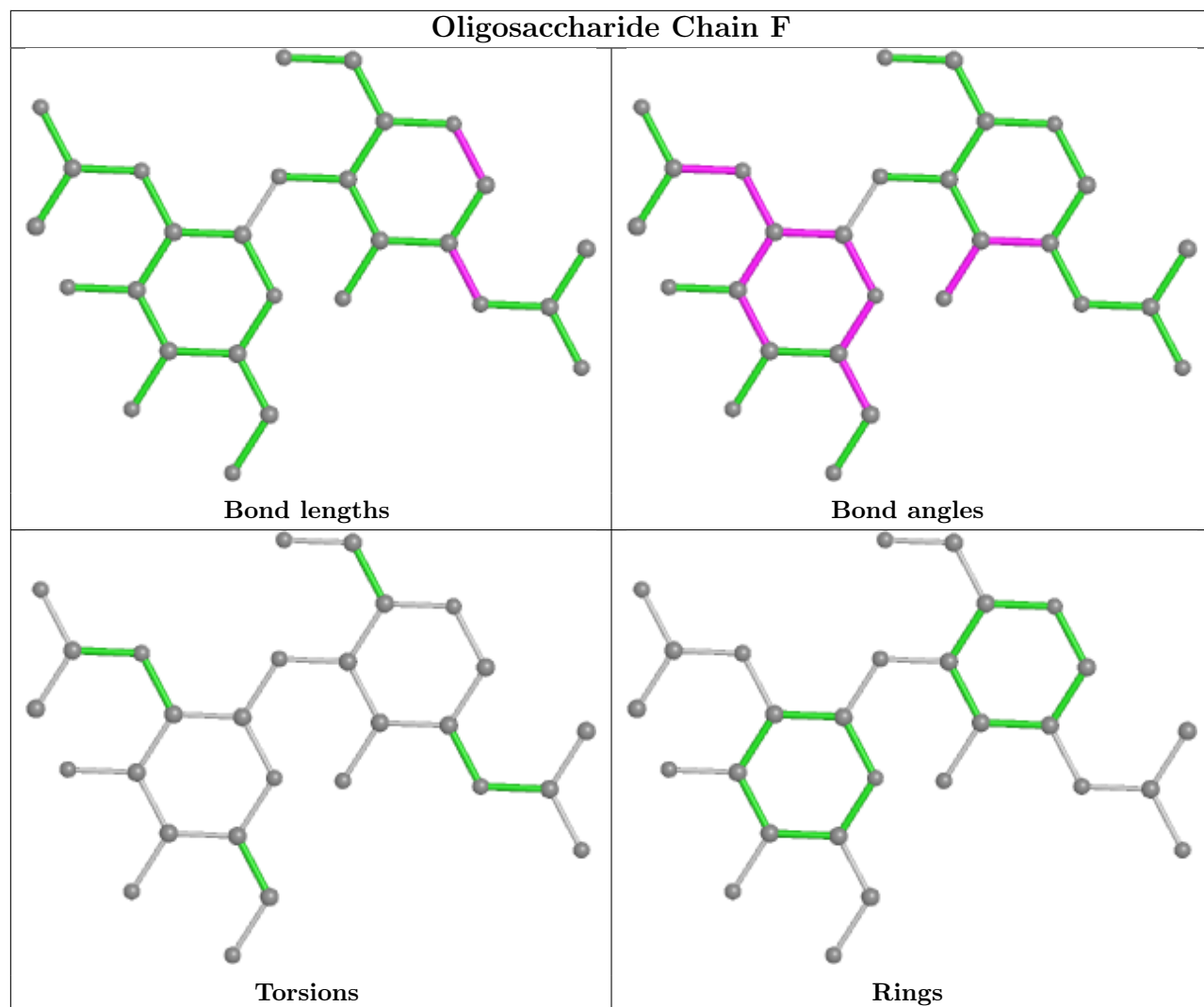
There are no ring outliers.

3 monomers are involved in 6 short contacts:

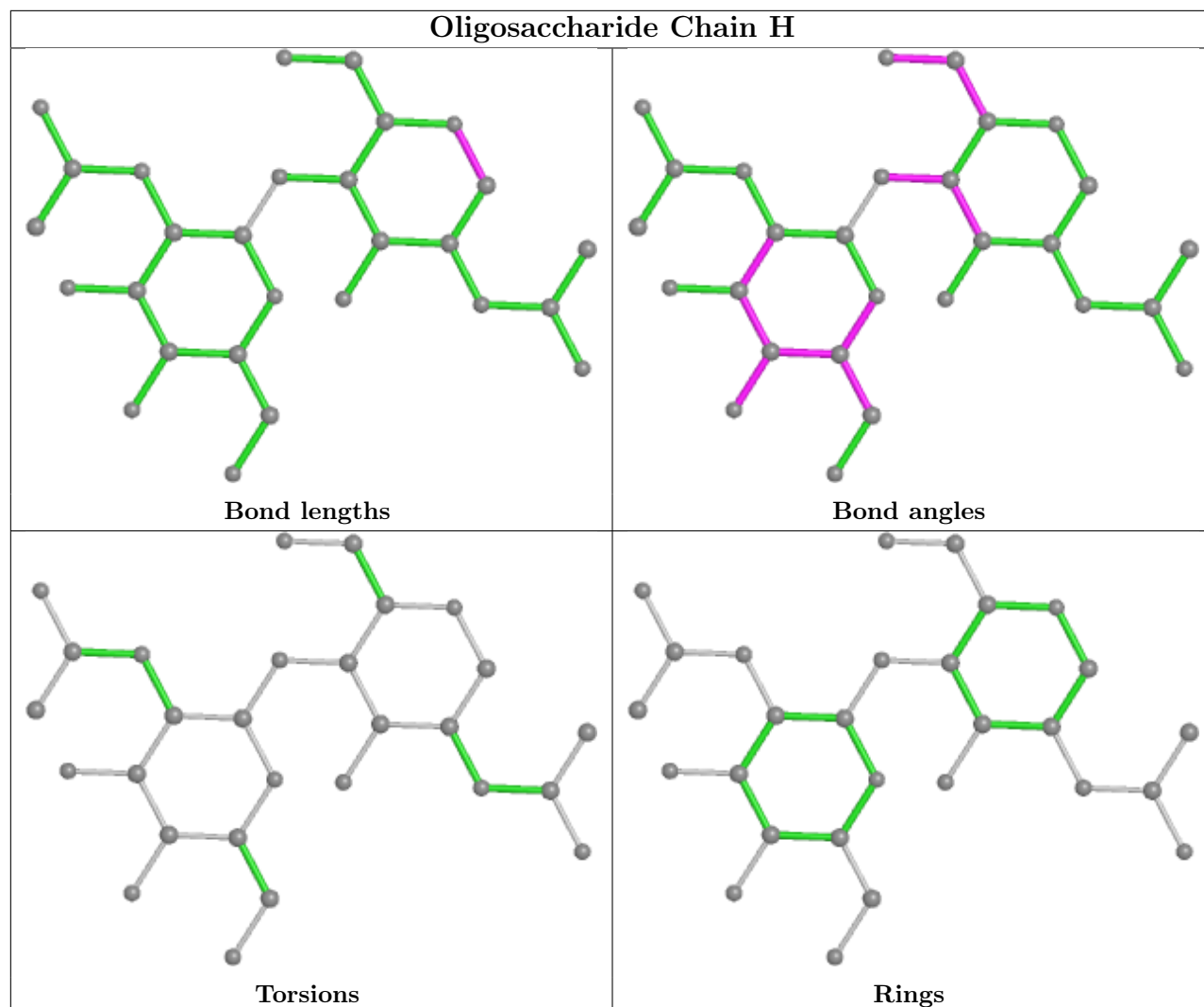
Mol	Chain	Res	Type	Clashes	Symm-Clashes
4	I	1	NAG	1	0
4	I	2	NAG	2	0
2	J	1	NAG	3	0

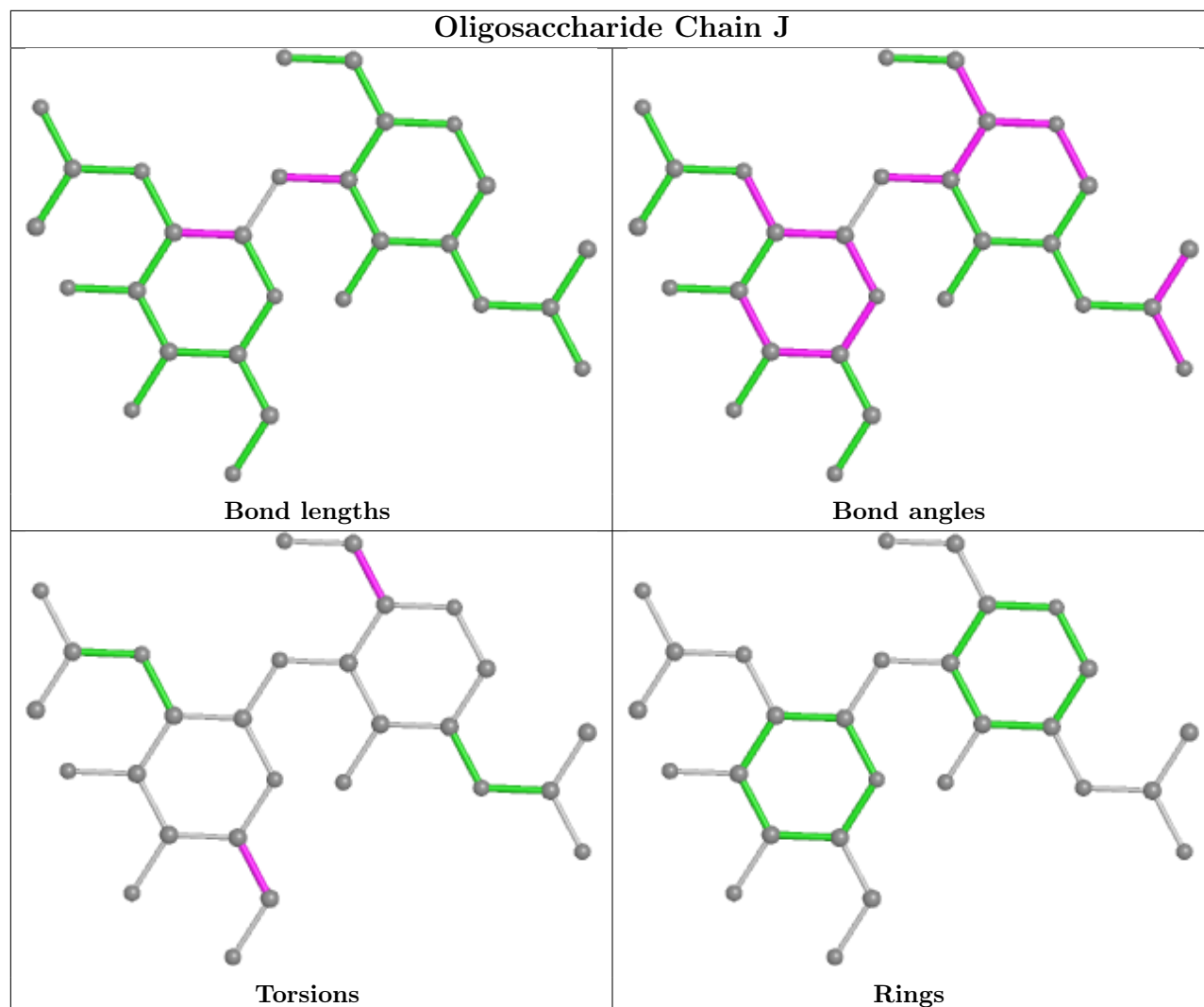
The following is a two-dimensional graphical depiction of Mogul quality analysis of bond lengths, bond angles, torsion angles, and ring geometry for oligosaccharide.

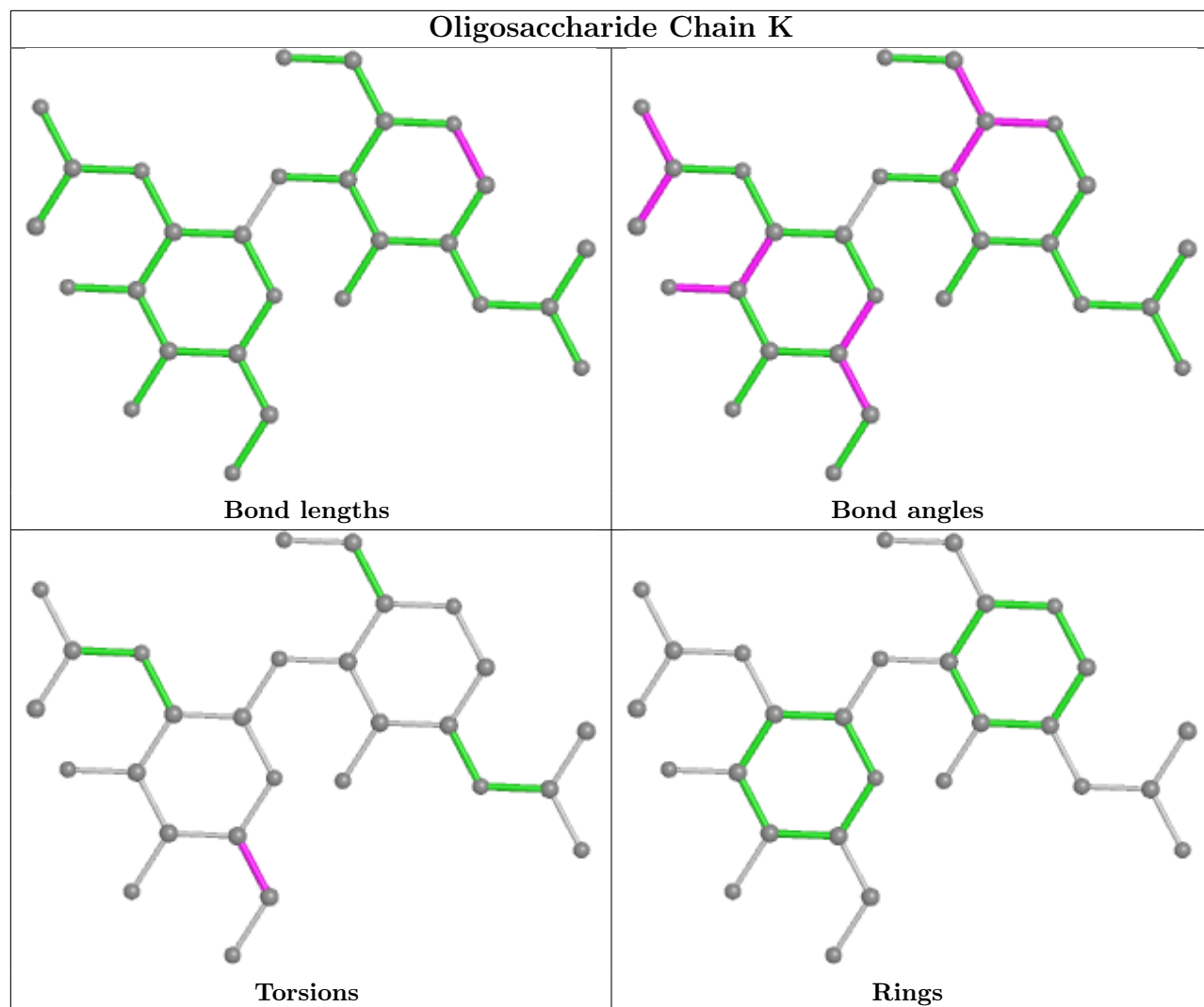


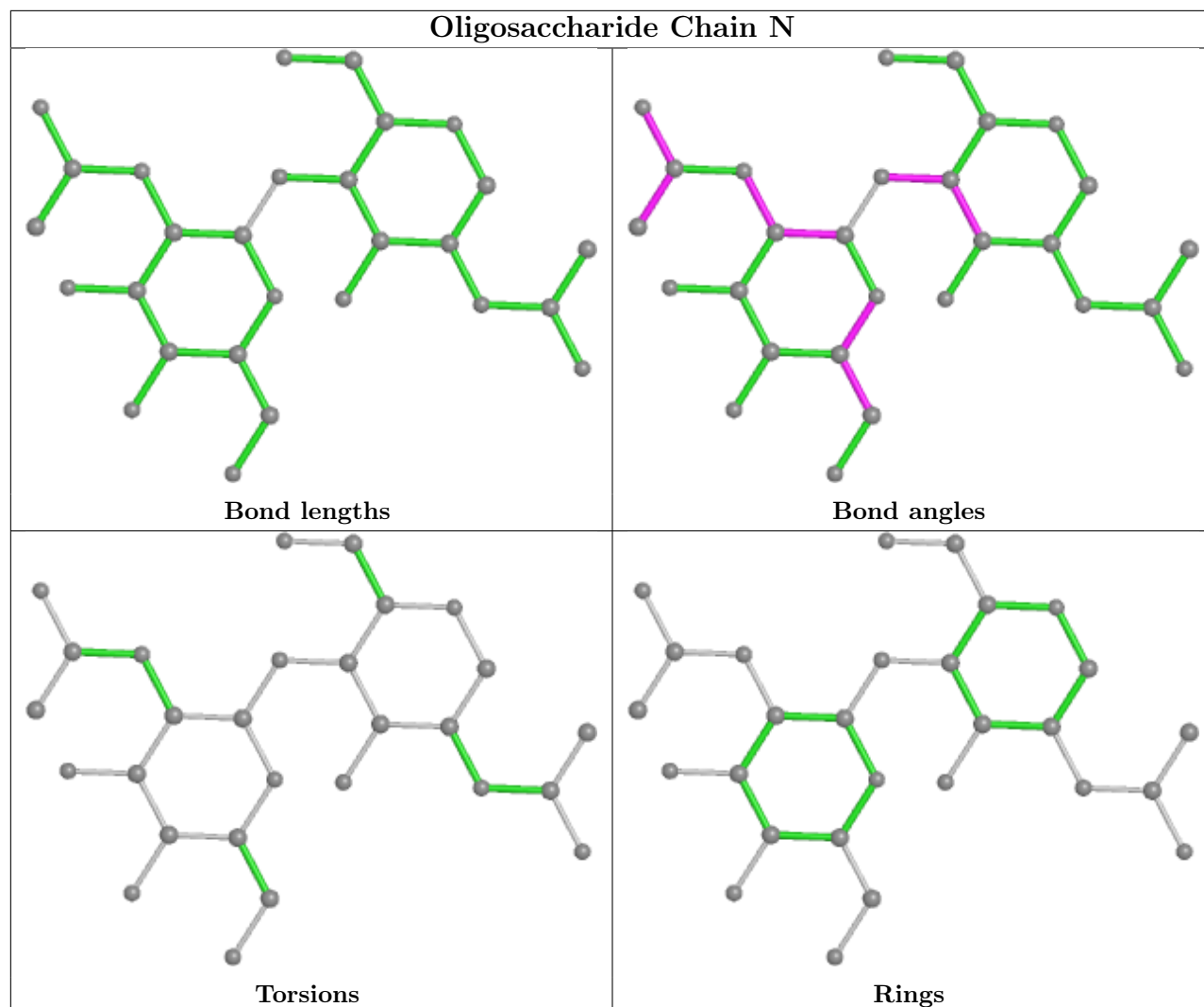


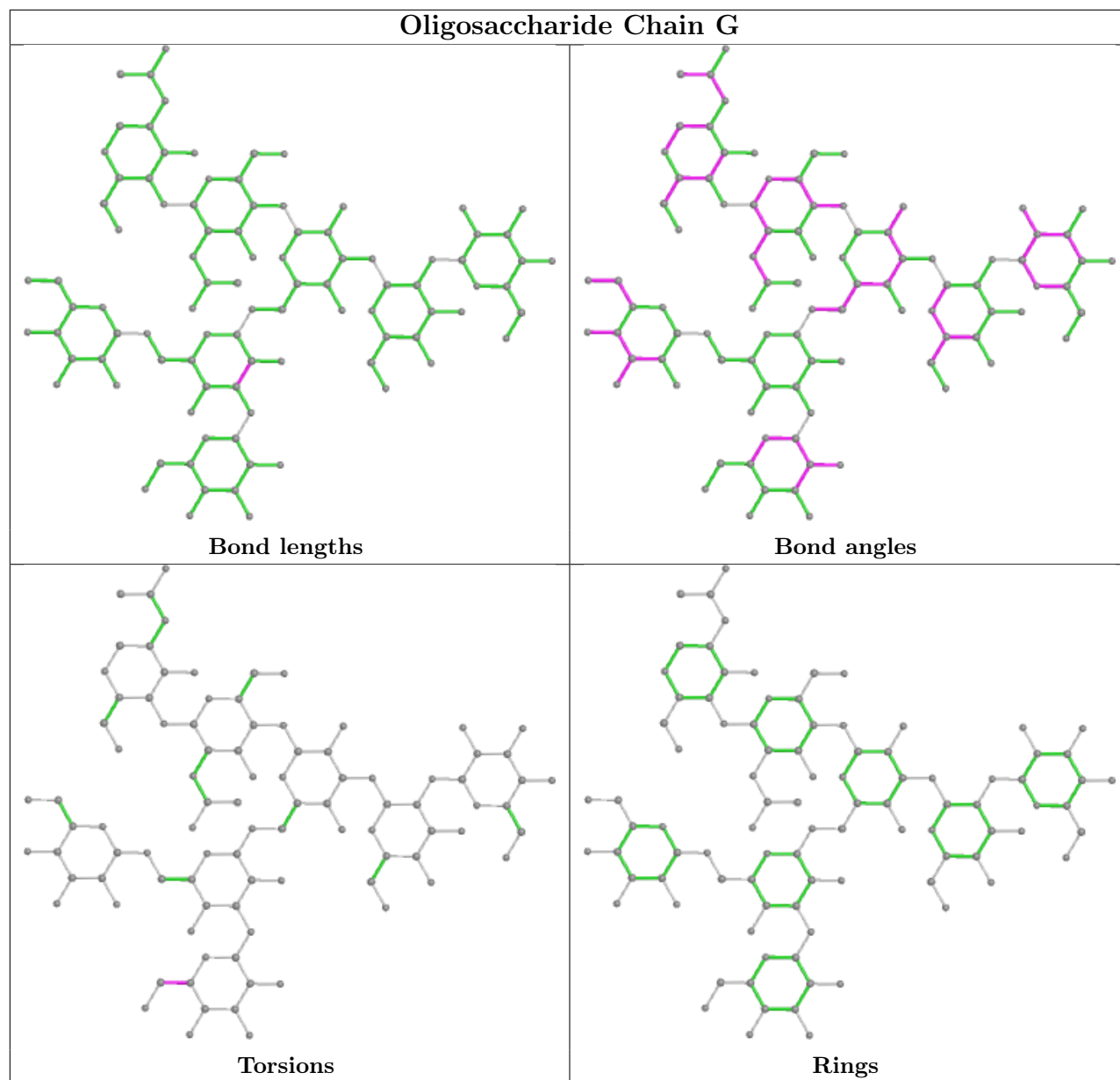


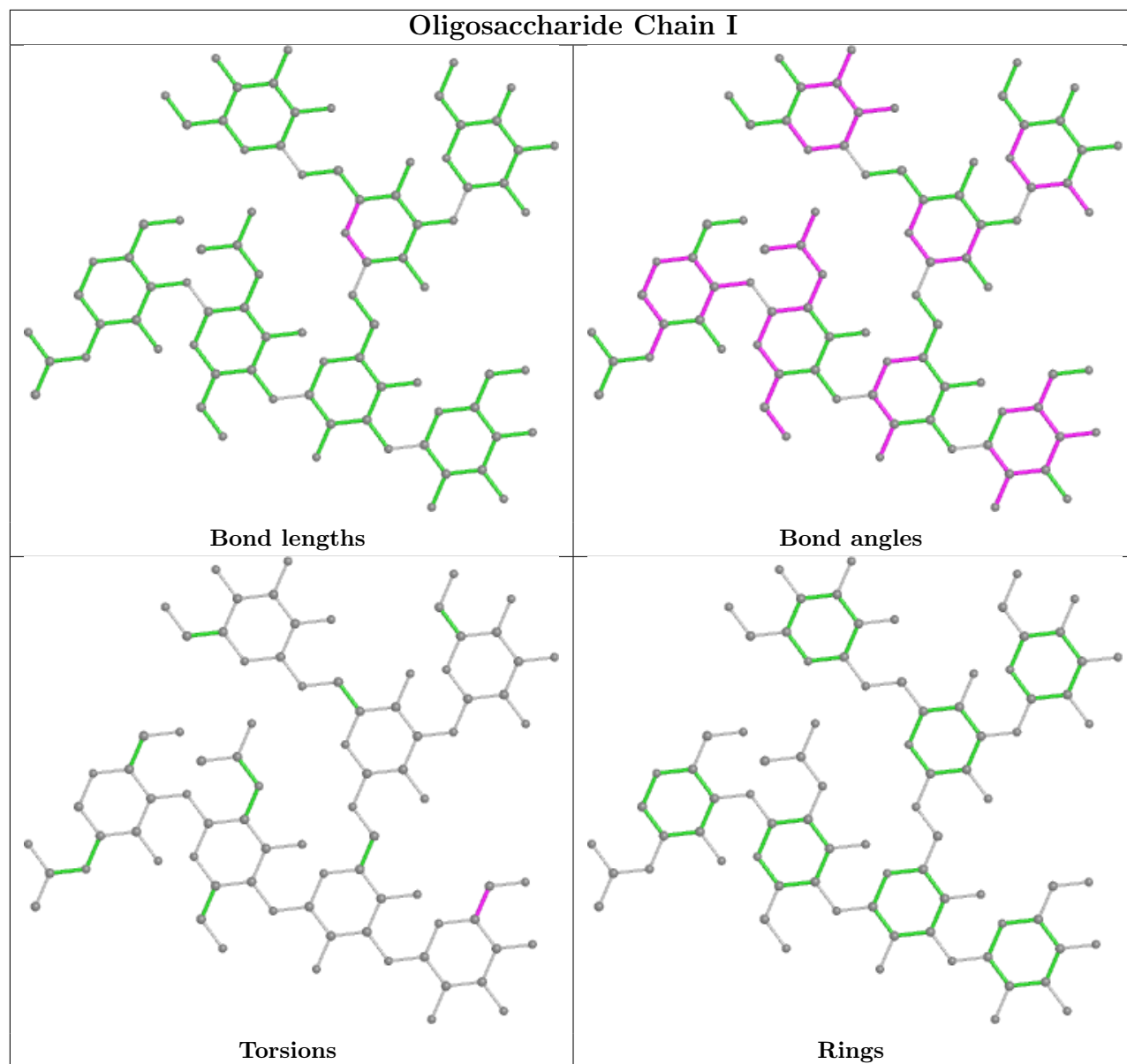


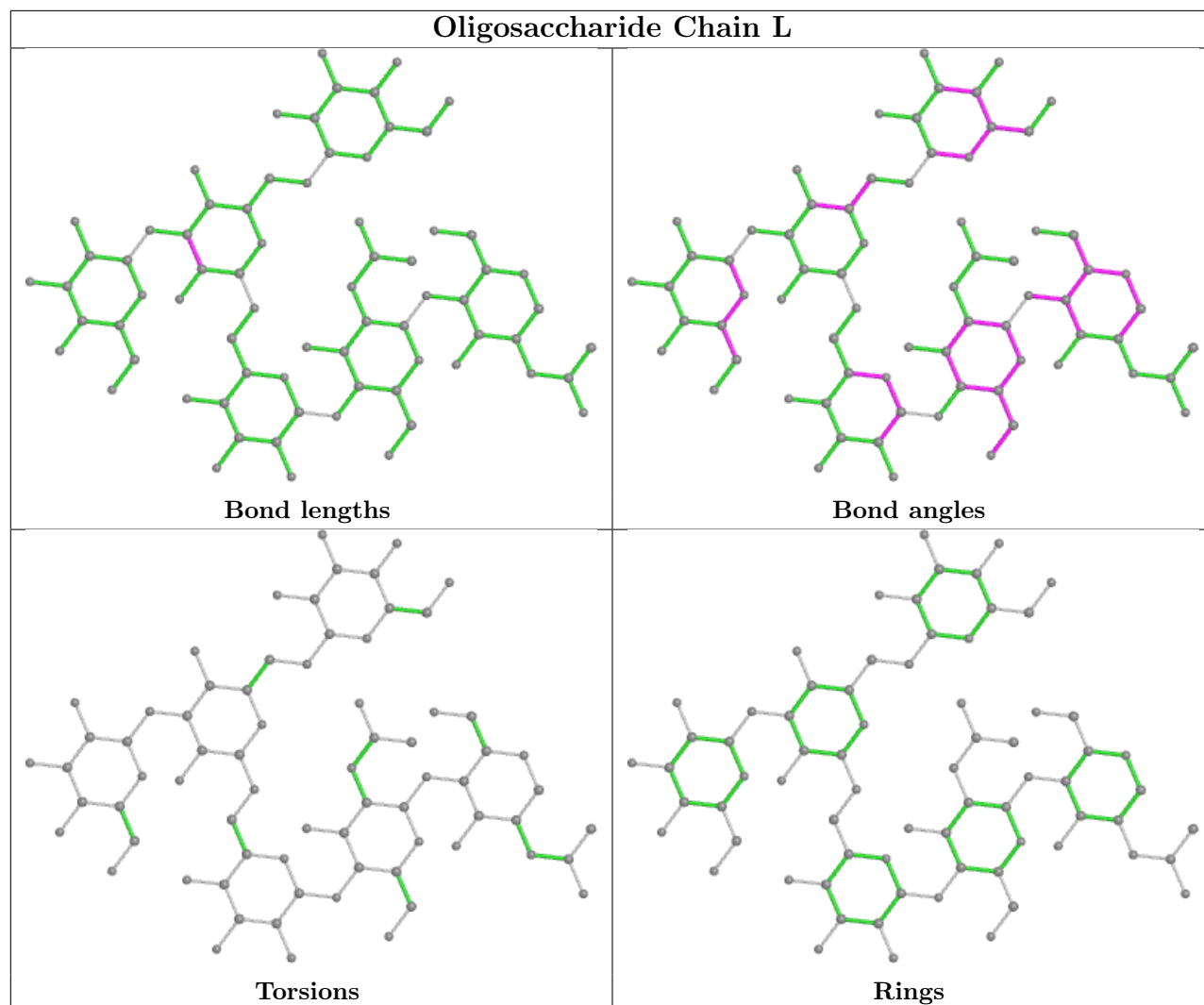


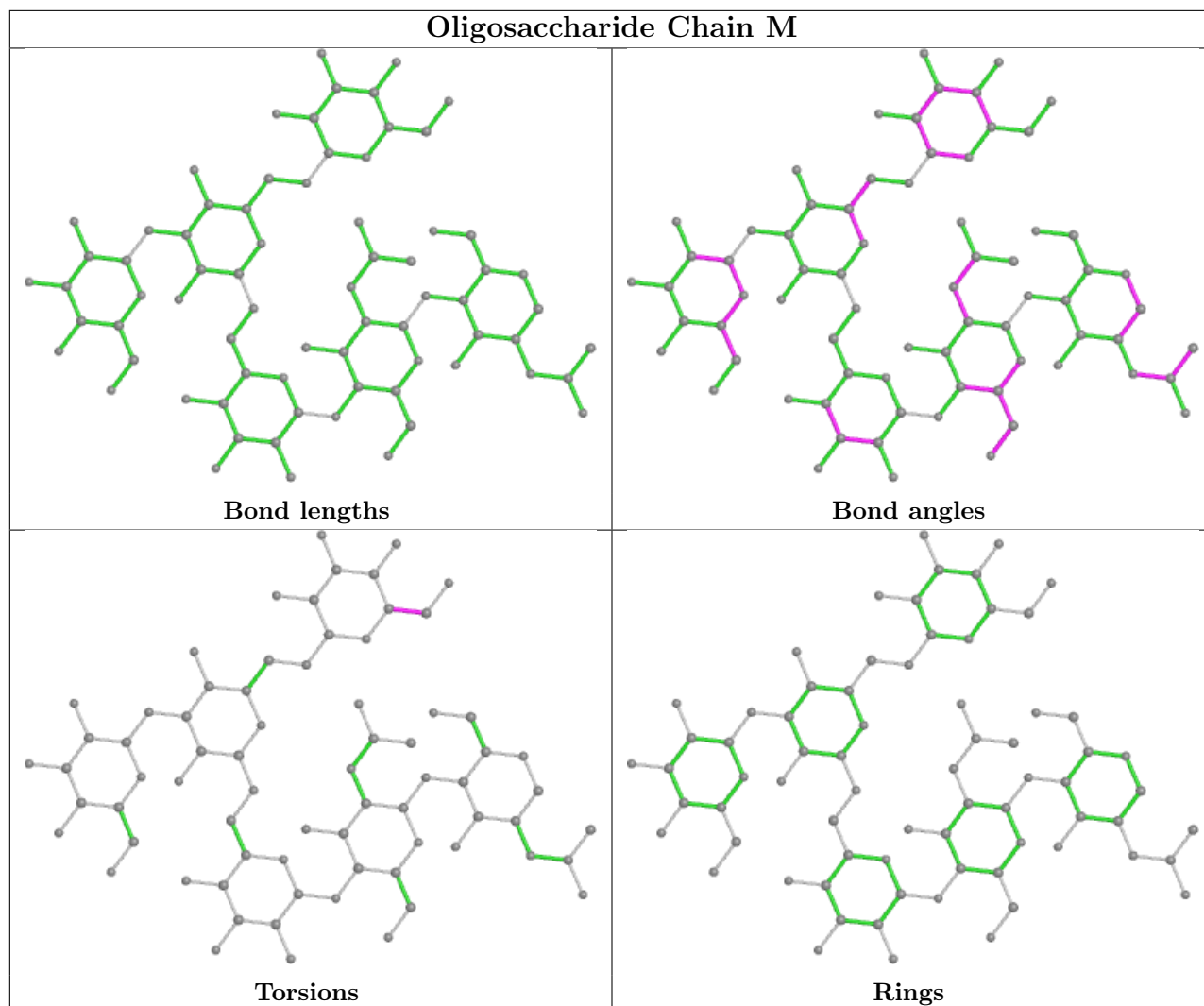












## 5.6 Ligand geometry [i](#)

Of 59 ligands modelled in this entry, 4 are monoatomic - leaving 55 for Mogul analysis.

In the following table, the Counts columns list the number of bonds (or angles) for which Mogul statistics could be retrieved, the number of bonds (or angles) that are observed in the model and the number of bonds (or angles) that are defined in the Chemical Component Dictionary. The Link column lists molecule types, if any, to which the group is linked. The Z score for a bond length (or angle) is the number of standard deviations the observed value is removed from the expected value. A bond length (or angle) with  $|Z| > 2$  is considered an outlier worth inspection. RMSZ is the root-mean-square of all Z scores of the bond lengths (or angles).

Mol	Type	Chain	Res	Link	Bond lengths			Bond angles		
					Counts	RMSZ	$\# Z  > 2$	Counts	RMSZ	$\# Z  > 2$
9	PEG	B	523[A]	-	6,6,6	0.40	0	5,5,5	0.39	0
6	GOL	B	514	-	5,5,5	0.33	0	5,5,5	0.48	0
9	PEG	D	521	-	6,6,6	0.52	0	5,5,5	0.49	0
9	PEG	D	519	-	6,6,6	0.19	0	5,5,5	0.12	0



Mol	Type	Chain	Res	Link	Bond lengths			Bond angles		
					Counts	RMSZ	# Z  > 2	Counts	RMSZ	# Z  > 2
6	GOL	C	514	-	5,5,5	0.95	0	5,5,5	1.70	2 (40%)
8	PO4	A	521	-	4,4,4	0.85	0	6,6,6	1.64	1 (16%)
9	PEG	C	520	-	6,6,6	0.60	0	5,5,5	0.25	0
9	PEG	C	523	-	6,6,6	0.39	0	5,5,5	0.35	0
9	PEG	D	520	-	6,6,6	0.47	0	5,5,5	0.13	0
6	GOL	A	517	-	5,5,5	0.72	0	5,5,5	1.25	0
6	GOL	D	512	-	5,5,5	0.26	0	5,5,5	0.91	0
6	GOL	A	513[A]	-	5,5,5	0.24	0	5,5,5	0.79	0
6	GOL	A	513[B]	-	5,5,5	0.45	0	5,5,5	0.64	0
6	GOL	A	514	-	5,5,5	0.67	0	5,5,5	1.14	0
6	GOL	A	518	-	5,5,5	0.28	0	5,5,5	0.84	0
6	GOL	B	513	-	5,5,5	0.62	0	5,5,5	0.85	0
8	PO4	A	520	-	4,4,4	0.89	0	6,6,6	0.72	0
9	PEG	B	519	-	6,6,6	0.16	0	5,5,5	0.17	0
9	PEG	B	521	-	6,6,6	0.37	0	5,5,5	0.32	0
6	GOL	D	510	-	5,5,5	0.58	0	5,5,5	0.91	0
6	GOL	D	514	-	5,5,5	0.54	0	5,5,5	0.72	0
6	GOL	C	515[B]	-	5,5,5	0.50	0	5,5,5	0.56	0
9	PEG	D	518	-	6,6,6	0.25	0	5,5,5	0.21	0
6	GOL	C	515[A]	-	5,5,5	0.59	0	5,5,5	1.05	0
9	PEG	B	524	-	6,6,6	0.33	0	5,5,5	0.47	0
6	GOL	C	517	-	5,5,5	0.75	0	5,5,5	1.05	0
6	GOL	C	518	-	5,5,5	0.59	0	5,5,5	0.74	0
6	GOL	D	513	-	5,5,5	1.22	1 (20%)	5,5,5	1.05	1 (20%)
6	GOL	A	515[B]	-	5,5,5	0.27	0	5,5,5	0.81	0
6	GOL	A	515[A]	-	5,5,5	0.23	0	5,5,5	1.05	0
6	GOL	B	511	-	5,5,5	0.47	0	5,5,5	1.39	1 (20%)
6	GOL	B	516	-	5,5,5	0.61	0	5,5,5	0.86	0
6	GOL	D	511	-	5,5,5	0.53	0	5,5,5	1.01	0
8	PO4	B	518	-	4,4,4	1.02	0	6,6,6	0.80	0
9	PEG	B	522	-	6,6,6	0.21	0	5,5,5	0.29	0
9	PEG	B	525	-	6,6,6	0.18	0	5,5,5	0.08	0
9	PEG	C	522	-	6,6,6	0.31	0	5,5,5	0.21	0
10	NAG	D	501	1	14,14,15	0.68	0	17,19,21	0.78	0
9	PEG	D	516	-	6,6,6	0.37	0	5,5,5	0.33	0
6	GOL	B	515	-	5,5,5	0.57	0	5,5,5	0.69	0
9	PEG	D	517	-	6,6,6	0.73	0	5,5,5	0.99	0
6	GOL	C	511	-	5,5,5	0.59	0	5,5,5	0.97	1 (20%)
9	PEG	B	526	-	6,6,6	0.23	0	5,5,5	0.22	0
6	GOL	B	512	-	5,5,5	0.59	0	5,5,5	1.46	1 (20%)
9	PEG	B	520	-	6,6,6	0.45	0	5,5,5	0.26	0
9	PEG	A	522	-	6,6,6	0.35	0	5,5,5	0.17	0

Mol	Type	Chain	Res	Link	Bond lengths			Bond angles		
					Counts	RMSZ	# Z  > 2	Counts	RMSZ	# Z  > 2
6	GOL	C	512	-	5,5,5	1.06	0	5,5,5	2.35	2 (40%)
6	GOL	C	513	-	5,5,5	1.90	1 (20%)	5,5,5	0.97	0
6	GOL	C	516[B]	-	5,5,5	0.34	0	5,5,5	0.45	0
6	GOL	C	516[A]	-	5,5,5	0.57	0	5,5,5	0.91	0
9	PEG	C	521	-	6,6,6	0.29	0	5,5,5	0.36	0
10	NAG	B	501	1	14,14,15	0.55	0	17,19,21	1.77	5 (29%)
6	GOL	A	516[B]	-	5,5,5	0.46	0	5,5,5	0.55	0
9	PEG	B	523[B]	-	6,6,6	0.19	0	5,5,5	0.20	0
6	GOL	A	516[A]	-	5,5,5	0.33	0	5,5,5	0.41	0

In the following table, the Chirals column lists the number of chiral outliers, the number of chiral centers analysed, the number of these observed in the model and the number defined in the Chemical Component Dictionary. Similar counts are reported in the Torsion and Rings columns. '-' means no outliers of that kind were identified.

Mol	Type	Chain	Res	Link	Chirals	Torsions	Rings
9	PEG	B	523[A]	-	-	3/4/4/4	-
6	GOL	B	514	-	-	0/4/4/4	-
9	PEG	D	521	-	-	2/4/4/4	-
9	PEG	D	519	-	-	1/4/4/4	-
6	GOL	C	514	-	-	2/4/4/4	-
9	PEG	C	520	-	-	3/4/4/4	-
9	PEG	C	523	-	-	3/4/4/4	-
9	PEG	D	520	-	-	1/4/4/4	-
6	GOL	A	517	-	-	4/4/4/4	-
6	GOL	D	512	-	-	2/4/4/4	-
6	GOL	A	513[A]	-	-	0/4/4/4	-
6	GOL	A	513[B]	-	-	3/4/4/4	-
6	GOL	A	514	-	-	0/4/4/4	-
6	GOL	A	518	-	-	2/4/4/4	-
6	GOL	B	513	-	-	2/4/4/4	-
9	PEG	B	521	-	-	1/4/4/4	-
9	PEG	B	519	-	-	1/4/4/4	-
6	GOL	D	510	-	-	0/4/4/4	-
6	GOL	D	514	-	-	2/4/4/4	-
6	GOL	C	515[B]	-	-	4/4/4/4	-
9	PEG	D	518	-	-	2/4/4/4	-
6	GOL	C	515[A]	-	-	1/4/4/4	-
9	PEG	B	524	-	-	4/4/4/4	-

Continued on next page...

Continued from previous page...

Mol	Type	Chain	Res	Link	Chirals	Torsions	Rings
6	GOL	C	517	-	-	3/4/4/4	-
6	GOL	C	518	-	-	2/4/4/4	-
6	GOL	D	513	-	-	2/4/4/4	-
6	GOL	A	515[B]	-	-	2/4/4/4	-
6	GOL	A	515[A]	-	-	2/4/4/4	-
6	GOL	B	511	-	-	0/4/4/4	-
6	GOL	B	516	-	-	3/4/4/4	-
6	GOL	D	511	-	-	2/4/4/4	-
9	PEG	B	522	-	-	3/4/4/4	-
9	PEG	B	525	-	-	2/4/4/4	-
9	PEG	C	522	-	-	1/4/4/4	-
10	NAG	D	501	1	-	0/6/23/26	0/1/1/1
9	PEG	D	516	-	-	1/4/4/4	-
6	GOL	B	515	-	-	3/4/4/4	-
9	PEG	D	517	-	-	3/4/4/4	-
6	GOL	C	511	-	-	2/4/4/4	-
9	PEG	B	526	-	-	4/4/4/4	-
6	GOL	B	512	-	-	3/4/4/4	-
9	PEG	B	520	-	-	3/4/4/4	-
9	PEG	A	522	-	-	3/4/4/4	-
6	GOL	C	512	-	-	2/4/4/4	-
6	GOL	C	513	-	-	2/4/4/4	-
6	GOL	C	516[B]	-	-	2/4/4/4	-
6	GOL	C	516[A]	-	-	0/4/4/4	-
9	PEG	C	521	-	-	0/4/4/4	-
10	NAG	B	501	1	-	1/6/23/26	0/1/1/1
6	GOL	A	516[B]	-	-	4/4/4/4	-
9	PEG	B	523[B]	-	-	4/4/4/4	-
6	GOL	A	516[A]	-	-	0/4/4/4	-

All (2) bond length outliers are listed below:

Mol	Chain	Res	Type	Atoms	Z	Observed(Å)	Ideal(Å)
6	C	513	GOL	O1-C1	3.90	1.58	1.42
6	D	513	GOL	O1-C1	2.68	1.53	1.42

The worst 5 of 14 bond angle outliers are listed below:

Mol	Chain	Res	Type	Atoms	Z	Observed(°)	Ideal(°)
10	B	501	NAG	C1-C2-N2	-4.12	103.46	110.49
6	C	512	GOL	C3-C2-C1	-3.87	96.66	111.70
10	B	501	NAG	C4-C3-C2	2.81	115.13	111.02
6	C	514	GOL	O2-C2-C1	-2.73	97.10	109.12
10	B	501	NAG	O5-C1-C2	2.72	115.58	111.29

There are no chirality outliers.

5 of 102 torsion outliers are listed below:

Mol	Chain	Res	Type	Atoms
6	A	513[B]	GOL	O1-C1-C2-C3
6	A	517	GOL	O1-C1-C2-C3
6	A	517	GOL	C1-C2-C3-O3
6	A	518	GOL	O1-C1-C2-C3
6	B	512	GOL	C1-C2-C3-O3

There are no ring outliers.

30 monomers are involved in 100 short contacts:

Mol	Chain	Res	Type	Clashes	Symm-Clashes
9	B	523[A]	PEG	2	0
9	D	521	PEG	2	0
9	D	519	PEG	1	0
6	C	514	GOL	2	0
9	C	520	PEG	11	0
9	C	523	PEG	1	0
6	A	517	GOL	2	0
6	D	512	GOL	3	0
6	A	518	GOL	1	0
6	B	513	GOL	2	0
9	B	521	PEG	2	0
6	D	514	GOL	1	0
6	C	515[B]	GOL	1	0
9	D	518	PEG	3	0
9	B	524	PEG	1	0
6	C	517	GOL	17	0
6	A	515[A]	GOL	2	0
6	D	511	GOL	1	0
9	B	522	PEG	3	0
9	C	522	PEG	3	0
6	B	515	GOL	1	0
9	D	517	PEG	8	0

*Continued on next page...*

*Continued from previous page...*

Mol	Chain	Res	Type	Clashes	Symm-Clashes
9	B	526	PEG	4	0
6	B	512	GOL	1	0
9	B	520	PEG	10	0
9	A	522	PEG	5	0
6	C	516[B]	GOL	2	0
6	C	516[A]	GOL	3	0
9	C	521	PEG	4	0
9	B	523[B]	PEG	5	0

## 5.7 Other polymers [i](#)

There are no such residues in this entry.

## 5.8 Polymer linkage issues [i](#)

There are no chain breaks in this entry.

## 6 Fit of model and data [i](#)

### 6.1 Protein, DNA and RNA chains [i](#)

In the following table, the column labelled ‘#RSRZ> 2’ contains the number (and percentage) of RSRZ outliers, followed by percent RSRZ outliers for the chain as percentile scores relative to all X-ray entries and entries of similar resolution. The OWAB column contains the minimum, median, 95<sup>th</sup> percentile and maximum values of the occupancy-weighted average B-factor per residue. The column labelled ‘Q< 0.9’ lists the number of (and percentage) of residues with an average occupancy less than 0.9.

Mol	Chain	Analysed	<RSRZ>	#RSRZ>2	OWAB(Å <sup>2</sup> )	Q<0.9
1	A	389/389 (100%)	-0.48	1 (0%) 94   95	8, 12, 19, 36	0
1	B	389/389 (100%)	-0.48	1 (0%) 94   95	8, 12, 19, 45	0
1	C	389/389 (100%)	-0.52	2 (0%) 91   93	8, 11, 19, 39	0
1	D	389/389 (100%)	-0.50	1 (0%) 94   95	8, 12, 19, 40	0
All	All	1556/1556 (100%)	-0.49	5 (0%) 94   95	8, 12, 19, 45	0

All (5) RSRZ outliers are listed below:

Mol	Chain	Res	Type	RSRZ
1	C	343	GLY	4.7
1	B	82	ARG	2.4
1	C	345[A]	SER	2.4
1	A	467[A]	ILE	2.3
1	D	454	ARG	2.0

### 6.2 Non-standard residues in protein, DNA, RNA chains [i](#)

There are no non-standard protein/DNA/RNA residues in this entry.

### 6.3 Carbohydrates [i](#)

In the following table, the Atoms column lists the number of modelled atoms in the group and the number defined in the chemical component dictionary. The B-factors column lists the minimum, median, 95<sup>th</sup> percentile and maximum values of B factors of atoms in the group. The column labelled ‘Q< 0.9’ lists the number of atoms with occupancy less than 0.9.

Mol	Type	Chain	Res	Atoms	RSCC	RSR	B-factors(Å <sup>2</sup> )	Q<0.9
2	NAG	J	2	14/15	0.33	0.47	52,77,82,84	0
2	NAG	J	1	14/15	0.56	0.27	43,51,58,63	0

*Continued on next page...*

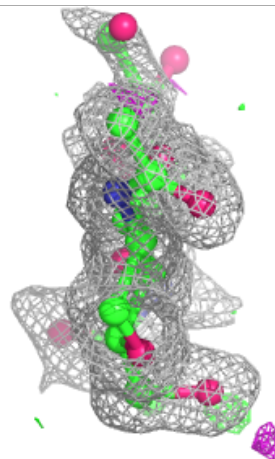
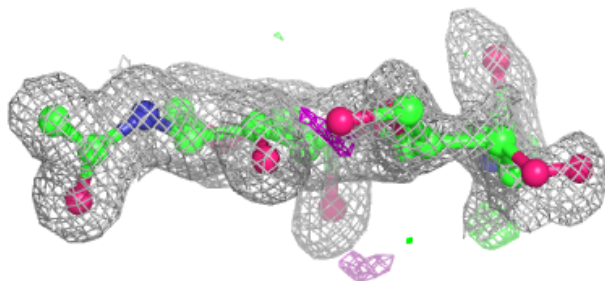
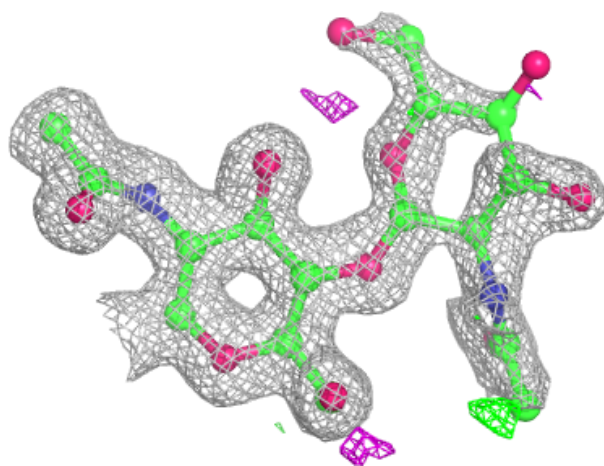
Continued from previous page...

Mol	Type	Chain	Res	Atoms	RSCC	RSR	B-factors( $\text{\AA}^2$ )	Q<0.9
2	NAG	E	2	14/15	0.71	0.34	40,47,50,59	0
4	MAN	I	7	11/12	0.71	0.32	36,45,55,55	0
2	NAG	N	2	14/15	0.73	0.36	45,51,67,71	0
2	NAG	F	2	14/15	0.76	0.41	44,51,64,68	0
2	NAG	K	2	14/15	0.77	0.28	36,42,46,47	0
3	MAN	G	5	11/12	0.79	0.32	33,39,43,47	0
5	MAN	L	5	11/12	0.81	0.28	30,35,38,39	0
5	MAN	L	6	11/12	0.82	0.19	25,28,34,40	0
5	MAN	M	5	11/12	0.82	0.24	29,34,38,41	0
5	NAG	L	1	14/15	0.85	0.20	23,27,31,35	0
2	NAG	H	2	14/15	0.85	0.33	43,49,59,61	0
5	NAG	M	2	14/15	0.86	0.18	19,24,28,30	0
5	MAN	M	6	11/12	0.86	0.23	25,28,37,45	0
5	BMA	M	3	11/12	0.87	0.20	26,29,34,36	0
5	NAG	M	1	14/15	0.87	0.18	22,24,27,29	0
3	NAG	G	1	14/15	0.87	0.17	22,26,30,31	0
5	BMA	L	3	11/12	0.88	0.20	25,27,28,32	0
5	NAG	L	2	14/15	0.88	0.17	18,22,27,29	0
4	NAG	I	1	14/15	0.89	0.20	22,26,37,37	0
5	MAN	L	4	11/12	0.90	0.22	27,29,30,31	0
4	MAN	I	6	11/12	0.90	0.15	20,22,31,37	0
4	NAG	I	2	14/15	0.91	0.16	17,19,23,29	0
5	MAN	M	4	11/12	0.91	0.19	25,27,30,31	0
2	NAG	E	1	14/15	0.92	0.11	18,21,25,29	0
3	MAN	G	8	11/12	0.92	0.14	19,23,31,35	0
2	NAG	F	1	14/15	0.93	0.13	16,19,29,34	0
3	MAN	G	6	11/12	0.94	0.09	14,15,16,19	0
4	MAN	I	5	11/12	0.94	0.11	18,19,21,22	0
3	NAG	G	2	14/15	0.94	0.12	13,16,21,24	0
2	NAG	H	1	14/15	0.94	0.10	14,20,29,35	0
2	NAG	K	1	14/15	0.95	0.11	15,19,26,30	0
3	BMA	G	3	11/12	0.96	0.10	14,14,16,16	0
4	BMA	I	3	11/12	0.96	0.11	16,18,21,24	0
4	MAN	I	4	11/12	0.96	0.09	16,18,19,19	0
3	MAN	G	7	11/12	0.96	0.10	14,15,19,19	0
3	MAN	G	4	11/12	0.96	0.11	18,21,23,28	0
2	NAG	N	1	14/15	0.96	0.11	15,18,30,36	0

The following is a graphical depiction of the model fit to experimental electron density for oligosaccharide. Each fit is shown from different orientation to approximate a three-dimensional view.

**Electron density around Chain E:**

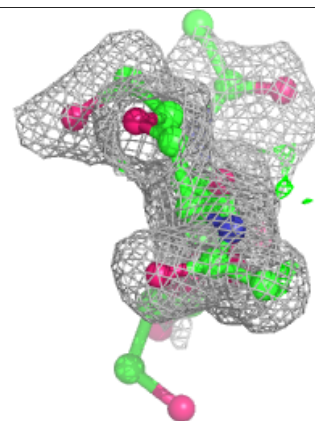
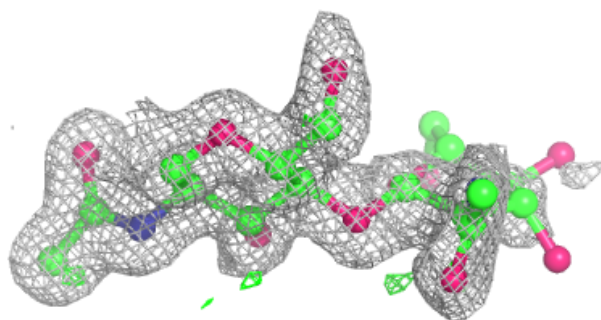
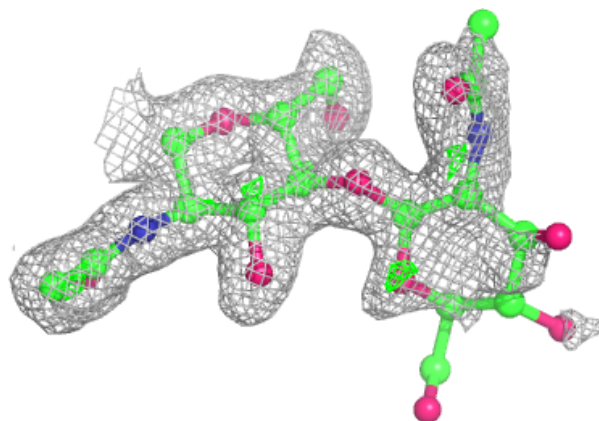
$2mF_o-DF_c$  (at 0.7 rmsd) in gray  
 $mF_o-DF_c$  (at 3 rmsd) in purple (negative)  
and green (positive)



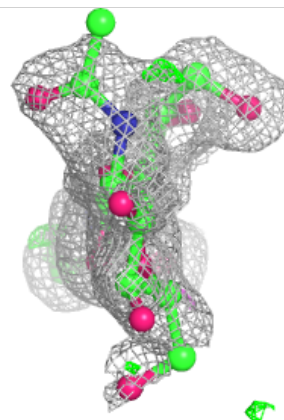
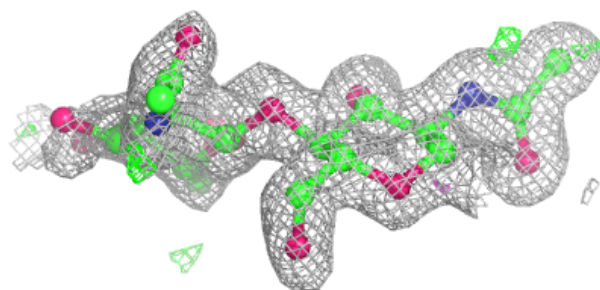
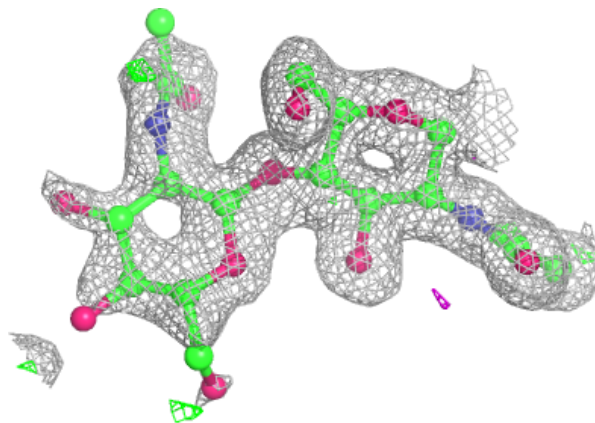


**Electron density around Chain F:**

$2mF_o-DF_c$  (at 0.7 rmsd) in gray  
 $mF_o-DF_c$  (at 3 rmsd) in purple (negative)  
and green (positive)

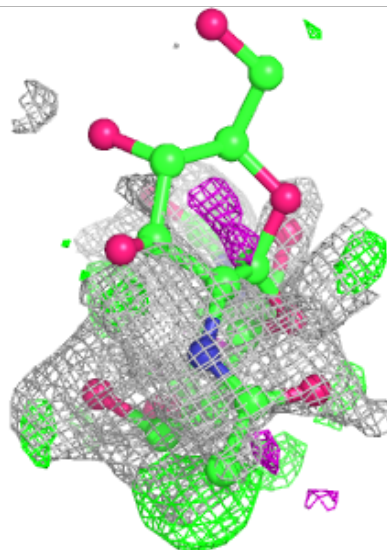
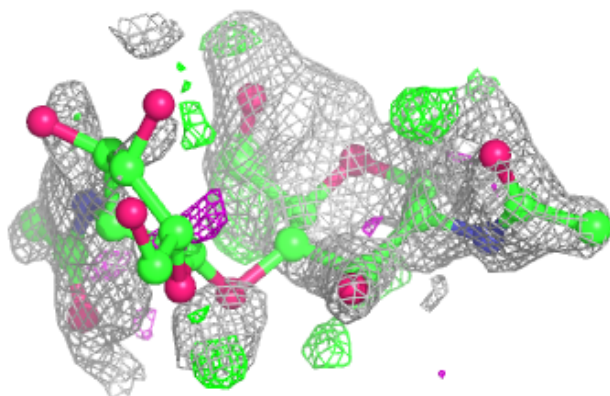
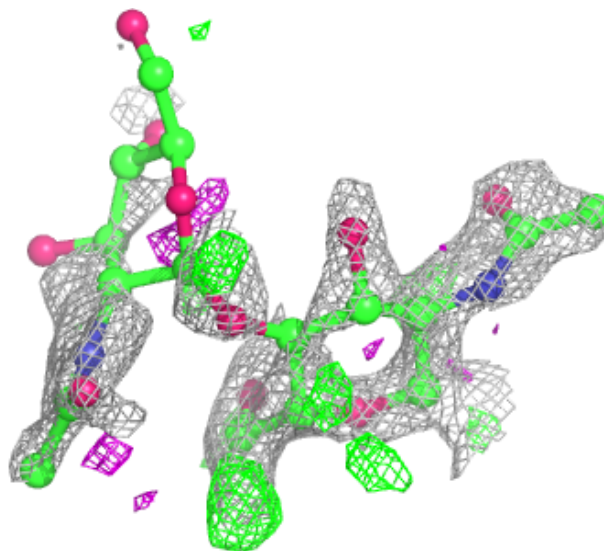
**Electron density around Chain H:**

$2mF_o-DF_c$  (at 0.7 rmsd) in gray  
 $mF_o-DF_c$  (at 3 rmsd) in purple (negative)  
and green (positive)



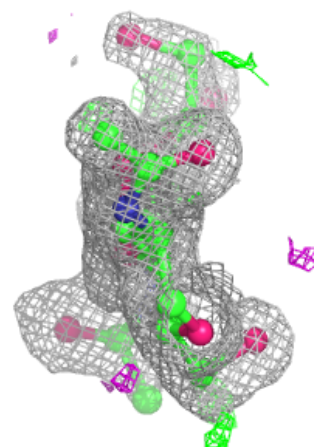
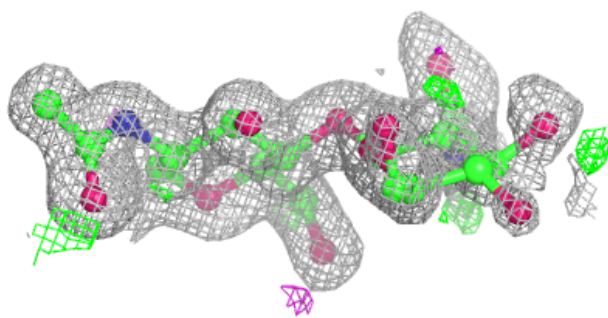
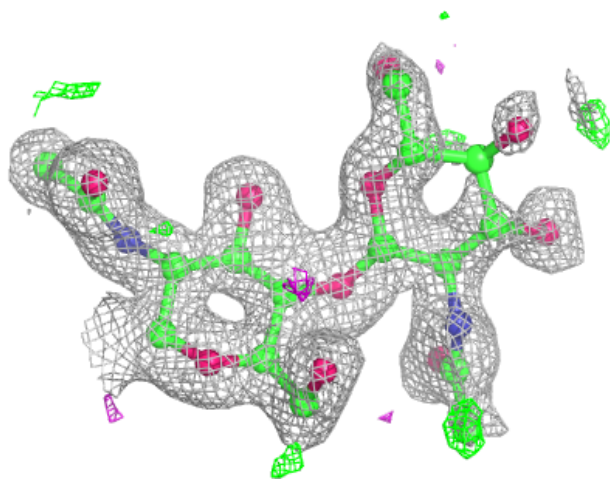
**Electron density around Chain J:**

$2mF_o-DF_c$  (at 0.7 rmsd) in gray  
 $mF_o-DF_c$  (at 3 rmsd) in purple (negative)  
and green (positive)



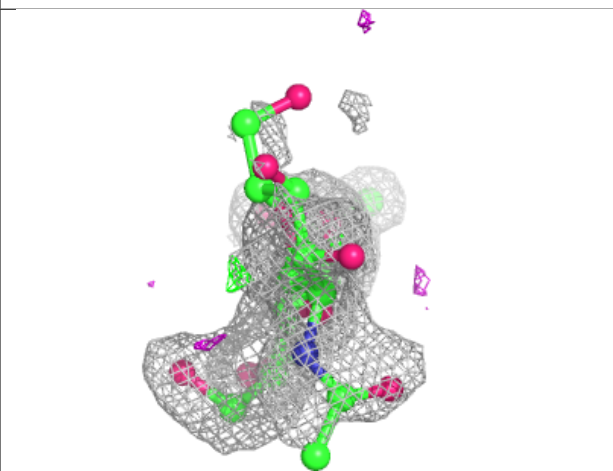
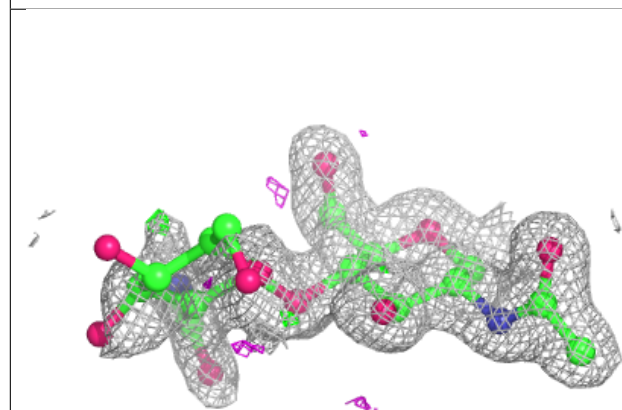
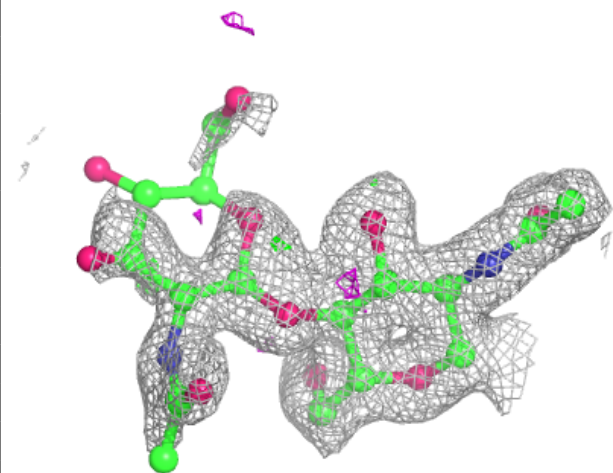
**Electron density around Chain K:**

$2mF_o-DF_c$  (at 0.7 rmsd) in gray  
 $mF_o-DF_c$  (at 3 rmsd) in purple (negative)  
and green (positive)



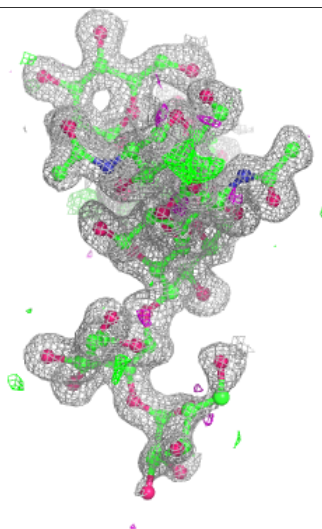
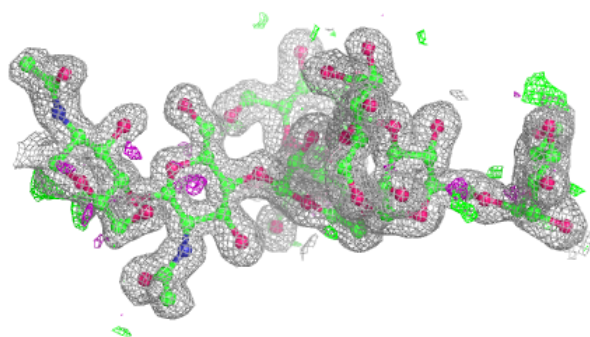
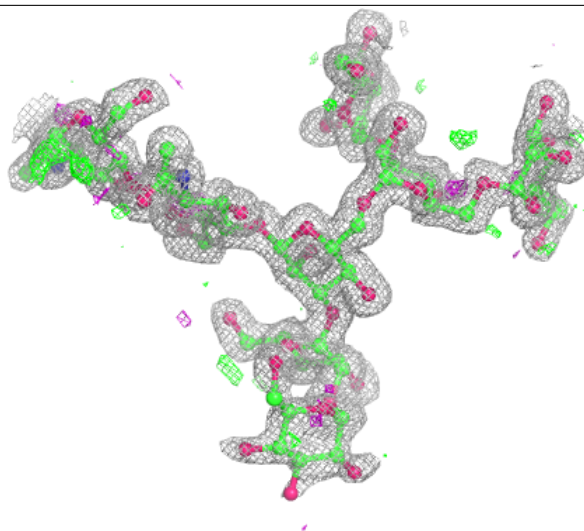
**Electron density around Chain N:**

$2mF_o-DF_c$  (at 0.7 rmsd) in gray  
 $mF_o-DF_c$  (at 3 rmsd) in purple (negative)  
and green (positive)



**Electron density around Chain G:**

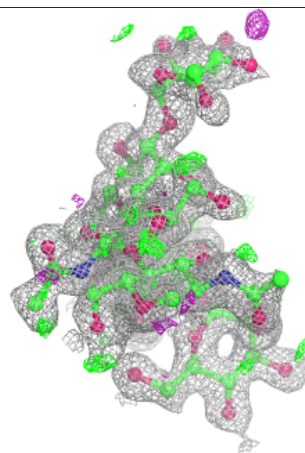
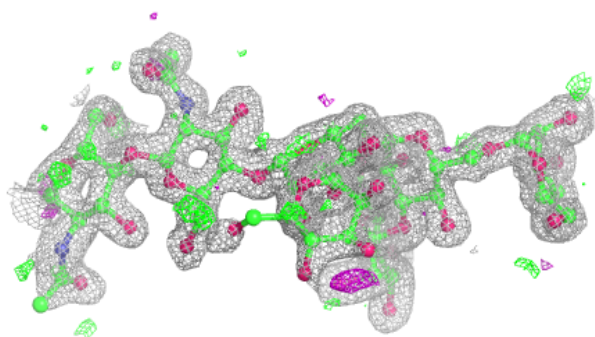
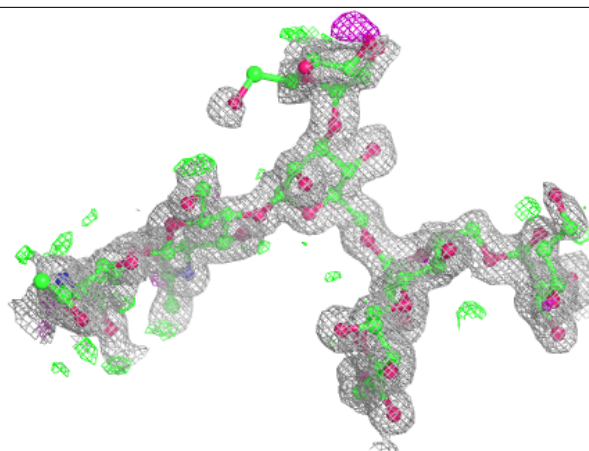
$2mF_o-DF_c$  (at 0.7 rmsd) in gray  
 $mF_o-DF_c$  (at 3 rmsd) in purple (negative)  
and green (positive)



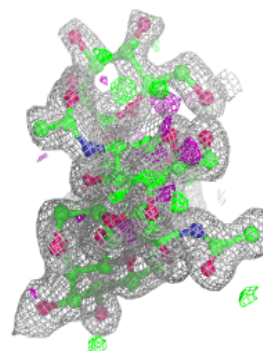
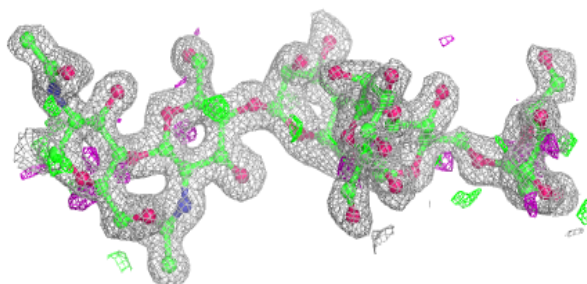
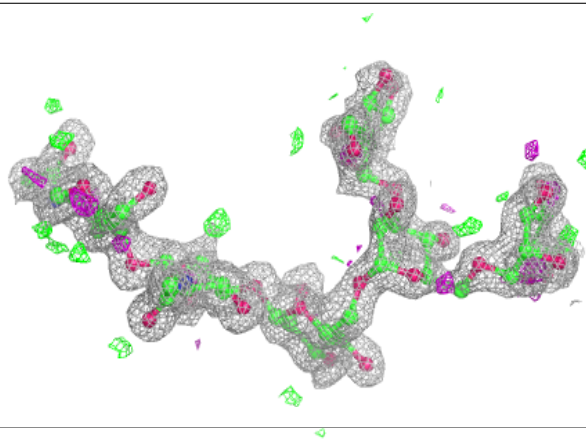


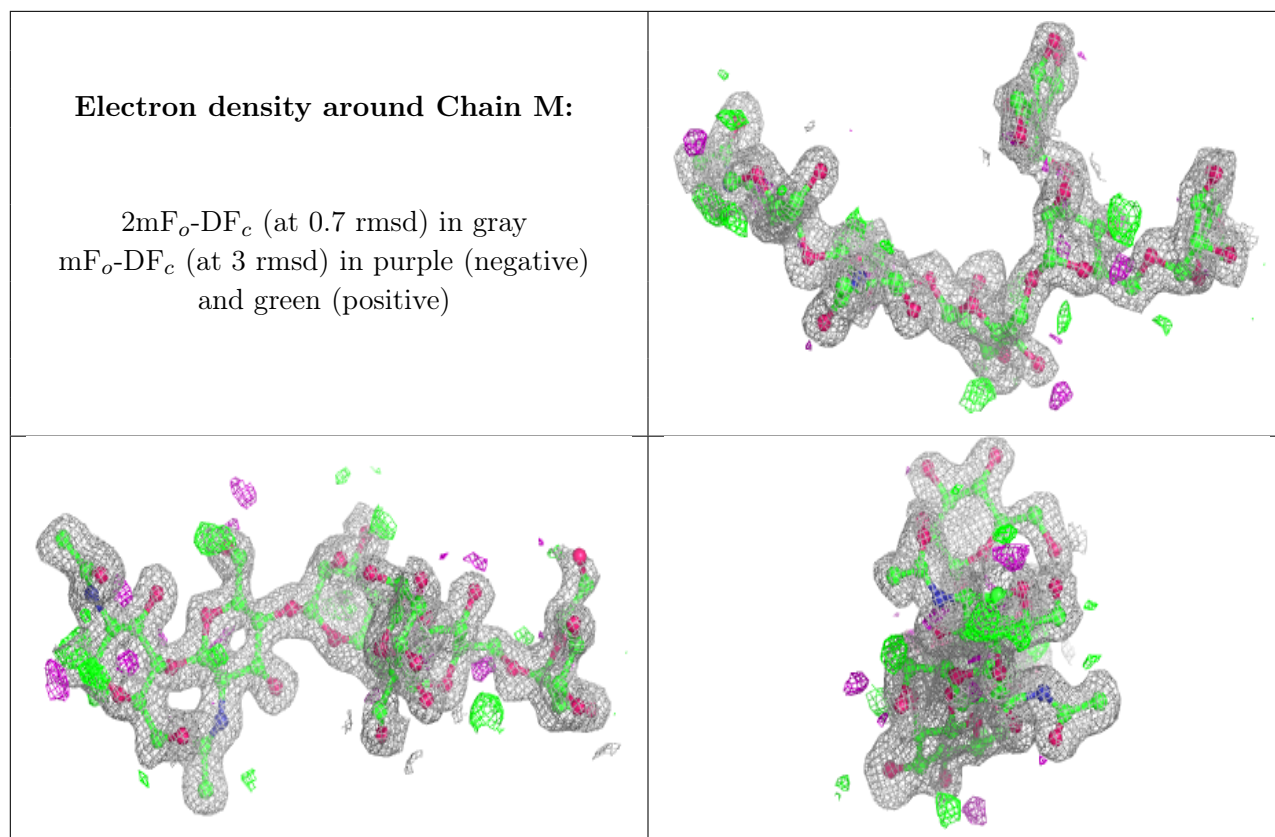
**Electron density around Chain I:**

$2mF_o-DF_c$  (at 0.7 rmsd) in gray  
 $mF_o-DF_c$  (at 3 rmsd) in purple (negative)  
and green (positive)

**Electron density around Chain L:**

$2mF_o-DF_c$  (at 0.7 rmsd) in gray  
 $mF_o-DF_c$  (at 3 rmsd) in purple (negative)  
and green (positive)





## 6.4 Ligands [i](#)

In the following table, the Atoms column lists the number of modelled atoms in the group and the number defined in the chemical component dictionary. The B-factors column lists the minimum, median, 95<sup>th</sup> percentile and maximum values of B factors of atoms in the group. The column labelled 'Q< 0.9' lists the number of atoms with occupancy less than 0.9.

Mol	Type	Chain	Res	Atoms	RSCC	RSR	B-factors(Å <sup>2</sup> )	Q<0.9
9	PEG	B	525	7/7	0.52	0.39	48,56,60,62	0
9	PEG	A	522	7/7	0.61	0.29	40,48,53,53	0
9	PEG	C	522	7/7	0.61	0.35	53,56,58,60	0
9	PEG	B	523[A]	7/7	0.67	0.30	31,33,35,36	7
9	PEG	B	523[B]	7/7	0.67	0.30	18,20,22,22	7
6	GOL	D	514	6/6	0.67	0.36	39,52,54,62	0
9	PEG	B	521	7/7	0.67	0.24	36,52,56,60	0
9	PEG	D	520	7/7	0.68	0.24	31,40,52,54	0
9	PEG	D	516	7/7	0.69	0.26	33,40,46,47	0
9	PEG	C	523	7/7	0.71	0.25	41,47,52,55	0
6	GOL	A	517	6/6	0.71	0.29	37,43,46,50	0
9	PEG	B	524	7/7	0.71	0.27	41,43,48,49	0
9	PEG	B	522	7/7	0.73	0.23	46,50,54,58	0
9	PEG	C	521	7/7	0.73	0.34	36,42,48,50	0

*Continued on next page...*

*Continued from previous page...*

Mol	Type	Chain	Res	Atoms	RSCC	RSR	B-factors(Å <sup>2</sup> )	Q<0.9
8	PO4	A	521	5/5	0.73	0.23	21,42,47,51	5
6	GOL	C	517	6/6	0.74	0.24	25,27,28,28	6
9	PEG	B	519	7/7	0.75	0.16	39,47,53,53	0
8	PO4	B	518	5/5	0.75	0.41	67,73,79,84	0
10	NAG	D	501	14/15	0.77	0.26	33,38,42,43	0
6	GOL	A	515[A]	6/6	0.78	0.20	31,33,34,35	6
9	PEG	D	519	7/7	0.78	0.22	43,48,57,62	0
8	PO4	A	520	5/5	0.78	0.37	95,96,99,110	0
10	NAG	B	501	14/15	0.78	0.38	48,52,56,64	0
6	GOL	A	515[B]	6/6	0.78	0.20	8,8,9,9	6
9	PEG	B	526	7/7	0.79	0.23	27,36,46,48	0
6	GOL	C	513	6/6	0.79	0.16	19,24,27,40	0
6	GOL	A	518	6/6	0.79	0.13	43,45,45,52	0
9	PEG	B	520	7/7	0.80	0.20	21,22,26,30	7
6	GOL	B	515	6/6	0.81	0.27	33,43,47,47	0
9	PEG	D	518	7/7	0.81	0.17	31,36,38,40	0
6	GOL	B	513	6/6	0.81	0.17	28,36,41,41	0
6	GOL	C	511	6/6	0.82	0.17	26,34,37,45	0
9	PEG	D	521	7/7	0.83	0.23	26,37,48,50	0
6	GOL	D	511	6/6	0.83	0.14	23,33,34,35	0
6	GOL	B	516	6/6	0.83	0.33	25,40,43,48	0
6	GOL	B	512	6/6	0.84	0.16	27,38,42,44	0
6	GOL	C	516[A]	6/6	0.85	0.28	20,21,21,22	6
6	GOL	C	516[B]	6/6	0.85	0.28	22,24,25,26	6
6	GOL	D	512	6/6	0.85	0.18	35,42,50,56	0
6	GOL	D	513	6/6	0.86	0.13	22,24,27,37	0
6	GOL	C	514	6/6	0.88	0.13	25,33,34,35	0
6	GOL	C	515[A]	6/6	0.88	0.17	30,31,34,38	6
6	GOL	C	515[B]	6/6	0.88	0.17	13,13,14,15	6
6	GOL	A	514	6/6	0.89	0.15	26,35,41,49	0
6	GOL	C	512	6/6	0.89	0.14	20,25,26,30	0
9	PEG	D	517	7/7	0.89	0.22	16,18,23,25	7
6	GOL	C	518	6/6	0.90	0.30	22,37,42,56	0
6	GOL	D	510	6/6	0.90	0.10	21,23,25,26	0
9	PEG	C	520	7/7	0.92	0.17	25,28,31,33	0
6	GOL	B	511	6/6	0.92	0.09	23,26,27,34	0
6	GOL	A	516[B]	6/6	0.93	0.16	12,13,13,13	6
6	GOL	A	516[A]	6/6	0.93	0.16	18,22,28,31	6
6	GOL	B	514	6/6	0.93	0.11	20,24,30,34	0
6	GOL	A	513[B]	6/6	0.96	0.11	9,10,11,11	6
6	GOL	A	513[A]	6/6	0.96	0.11	17,19,20,22	6
7	CA	C	519	1/1	0.99	0.10	19,19,19,19	0

*Continued on next page...*



*Continued from previous page...*

Mol	Type	Chain	Res	Atoms	RSCC	RSR	B-factors( $\text{\AA}^2$ )	Q<0.9
7	CA	A	519	1/1	0.99	0.03	15,15,15,15	1
7	CA	D	515	1/1	1.00	0.07	9,9,9,9	1
7	CA	B	517	1/1	1.00	0.07	7,7,7,7	1

## 6.5 Other polymers [i](#)

There are no such residues in this entry.