



Full wwPDB X-ray Structure Validation Report ⓘ

Jun 16, 2024 – 02:55 AM EDT

PDB ID : 2HK1
Title : Crystal structure of D-psicose 3-epimerase (DPEase) in the presence of D-fructose
Authors : Kim, K.; Kim, H.J.; Oh, D.K.; Cha, S.S.; Rhee, S.
Deposited on : 2006-07-03
Resolution : 2.30 Å(reported)

This is a Full wwPDB X-ray Structure Validation Report for a publicly released PDB entry.

We welcome your comments at validation@mail.wwpdb.org

A user guide is available at

<https://www.wwpdb.org/validation/2017/XrayValidationReportHelp>

with specific help available everywhere you see the ⓘ symbol.

The types of validation reports are described at

<http://www.wwpdb.org/validation/2017/FAQs#types>.

The following versions of software and data (see [references ⓘ](#)) were used in the production of this report:

MolProbity : 4.02b-467
Mogul : 2022.3.0, CSD as543be (2022)
Xtriage (Phenix) : 1.20.1
EDS : 2.37.1
Percentile statistics : 20191225.v01 (using entries in the PDB archive December 25th 2019)
Refmac : 5.8.0158
CCP4 : 7.0.044 (Gargrove)
Ideal geometry (proteins) : Engh & Huber (2001)
Ideal geometry (DNA, RNA) : Parkinson et al. (1996)
Validation Pipeline (wwPDB-VP) : 2.37.1

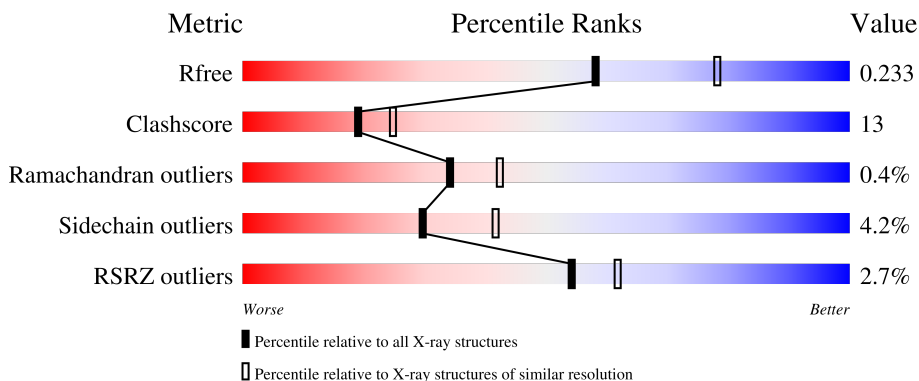
1 Overall quality at a glance

The following experimental techniques were used to determine the structure:

X-RAY DIFFRACTION


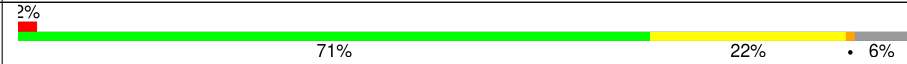
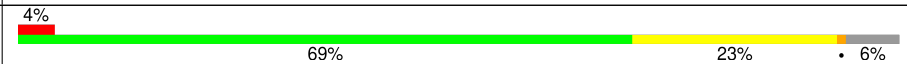

The reported resolution of this entry is 2.30 Å.

Percentile scores (ranging between 0-100) for global validation metrics of the entry are shown in the following graphic. The table shows the number of entries on which the scores are based.



Metric	Whole archive (#Entries)	Similar resolution (#Entries, resolution range(Å))
R_{free}	130704	5042 (2.30-2.30)
Clashscore	141614	5643 (2.30-2.30)
Ramachandran outliers	138981	5575 (2.30-2.30)
Sidechain outliers	138945	5575 (2.30-2.30)
RSRZ outliers	127900	4938 (2.30-2.30)

The table below summarises the geometric issues observed across the polymeric chains and their fit to the electron density. The red, orange, yellow and green segments of the lower bar indicate the fraction of residues that contain outliers for ≥ 3 , 2, 1 and 0 types of geometric quality criteria respectively. A grey segment represents the fraction of residues that are not modelled. The numeric value for each fraction is indicated below the corresponding segment, with a dot representing fractions $\leq 5\%$. The upper red bar (where present) indicates the fraction of residues that have poor fit to the electron density. The numeric value is given above the bar.

Mol	Chain	Length	Quality of chain
1	A	309	 2% 69% 22% • 6%
1	B	309	 2% 71% 22% • 6%
1	C	309	 4% 69% 23% • 6%
1	D	309	 2% 71% 21% • 6%

2 Entry composition [i](#)

There are 4 unique types of molecules in this entry. The entry contains 9344 atoms, of which 0 are hydrogens and 0 are deuteriums.

In the tables below, the ZeroOcc column contains the number of atoms modelled with zero occupancy, the AltConf column contains the number of residues with at least one atom in alternate conformation and the Trace column contains the number of residues modelled with at most 2 atoms.

- Molecule 1 is a protein called D-PSICOSE 3-EPIMERASE.

Mol	Chain	Residues	Atoms						ZeroOcc	AltConf	Trace
			Total	C	N	O	S	Se			
1	A	289	2229	1413	390	419	1	6	0	0	0
1	B	289	2229	1413	390	419	1	6	0	0	0
1	C	289	2229	1413	390	419	1	6	0	0	0
1	D	289	2229	1413	390	419	1	6	0	0	0

There are 80 discrepancies between the modelled and reference sequences:

Chain	Residue	Modelled	Actual	Comment	Reference
A	-19	MSE	-	EXPRESSION TAG	UNP A9CH28
A	-18	GLY	-	EXPRESSION TAG	UNP A9CH28
A	-17	SER	-	EXPRESSION TAG	UNP A9CH28
A	-16	SER	-	EXPRESSION TAG	UNP A9CH28
A	-15	HIS	-	EXPRESSION TAG	UNP A9CH28
A	-14	HIS	-	EXPRESSION TAG	UNP A9CH28
A	-13	HIS	-	EXPRESSION TAG	UNP A9CH28
A	-12	HIS	-	EXPRESSION TAG	UNP A9CH28
A	-11	HIS	-	EXPRESSION TAG	UNP A9CH28
A	-10	SER	-	EXPRESSION TAG	UNP A9CH28
A	-9	SER	-	EXPRESSION TAG	UNP A9CH28
A	-8	GLY	-	EXPRESSION TAG	UNP A9CH28
A	-7	GLU	-	EXPRESSION TAG	UNP A9CH28
A	-6	ASN	-	EXPRESSION TAG	UNP A9CH28
A	-5	LEU	-	EXPRESSION TAG	UNP A9CH28
A	-4	TYR	-	EXPRESSION TAG	UNP A9CH28
A	-3	PHE	-	EXPRESSION TAG	UNP A9CH28
A	-2	GLN	-	EXPRESSION TAG	UNP A9CH28
A	-1	GLY	-	EXPRESSION TAG	UNP A9CH28
A	0	HIS	-	EXPRESSION TAG	UNP A9CH28
B	-19	MSE	-	EXPRESSION TAG	UNP A9CH28

Continued on next page...

Continued from previous page...

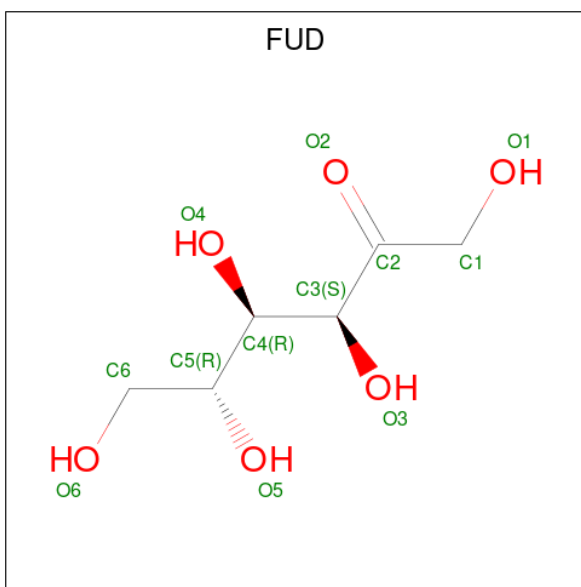
Chain	Residue	Modelled	Actual	Comment	Reference
B	-18	GLY	-	EXPRESSION TAG	UNP A9CH28
B	-17	SER	-	EXPRESSION TAG	UNP A9CH28
B	-16	SER	-	EXPRESSION TAG	UNP A9CH28
B	-15	HIS	-	EXPRESSION TAG	UNP A9CH28
B	-14	HIS	-	EXPRESSION TAG	UNP A9CH28
B	-13	HIS	-	EXPRESSION TAG	UNP A9CH28
B	-12	HIS	-	EXPRESSION TAG	UNP A9CH28
B	-11	HIS	-	EXPRESSION TAG	UNP A9CH28
B	-10	SER	-	EXPRESSION TAG	UNP A9CH28
B	-9	SER	-	EXPRESSION TAG	UNP A9CH28
B	-8	GLY	-	EXPRESSION TAG	UNP A9CH28
B	-7	GLU	-	EXPRESSION TAG	UNP A9CH28
B	-6	ASN	-	EXPRESSION TAG	UNP A9CH28
B	-5	LEU	-	EXPRESSION TAG	UNP A9CH28
B	-4	TYR	-	EXPRESSION TAG	UNP A9CH28
B	-3	PHE	-	EXPRESSION TAG	UNP A9CH28
B	-2	GLN	-	EXPRESSION TAG	UNP A9CH28
B	-1	GLY	-	EXPRESSION TAG	UNP A9CH28
B	0	HIS	-	EXPRESSION TAG	UNP A9CH28
C	-19	MSE	-	EXPRESSION TAG	UNP A9CH28
C	-18	GLY	-	EXPRESSION TAG	UNP A9CH28
C	-17	SER	-	EXPRESSION TAG	UNP A9CH28
C	-16	SER	-	EXPRESSION TAG	UNP A9CH28
C	-15	HIS	-	EXPRESSION TAG	UNP A9CH28
C	-14	HIS	-	EXPRESSION TAG	UNP A9CH28
C	-13	HIS	-	EXPRESSION TAG	UNP A9CH28
C	-12	HIS	-	EXPRESSION TAG	UNP A9CH28
C	-11	HIS	-	EXPRESSION TAG	UNP A9CH28
C	-10	SER	-	EXPRESSION TAG	UNP A9CH28
C	-9	SER	-	EXPRESSION TAG	UNP A9CH28
C	-8	GLY	-	EXPRESSION TAG	UNP A9CH28
C	-7	GLU	-	EXPRESSION TAG	UNP A9CH28
C	-6	ASN	-	EXPRESSION TAG	UNP A9CH28
C	-5	LEU	-	EXPRESSION TAG	UNP A9CH28
C	-4	TYR	-	EXPRESSION TAG	UNP A9CH28
C	-3	PHE	-	EXPRESSION TAG	UNP A9CH28
C	-2	GLN	-	EXPRESSION TAG	UNP A9CH28
C	-1	GLY	-	EXPRESSION TAG	UNP A9CH28
C	0	HIS	-	EXPRESSION TAG	UNP A9CH28
D	-19	MSE	-	EXPRESSION TAG	UNP A9CH28
D	-18	GLY	-	EXPRESSION TAG	UNP A9CH28
D	-17	SER	-	EXPRESSION TAG	UNP A9CH28

Continued on next page...

Continued from previous page...

Chain	Residue	Modelled	Actual	Comment	Reference
D	-16	SER	-	EXPRESSION TAG	UNP A9CH28
D	-15	HIS	-	EXPRESSION TAG	UNP A9CH28
D	-14	HIS	-	EXPRESSION TAG	UNP A9CH28
D	-13	HIS	-	EXPRESSION TAG	UNP A9CH28
D	-12	HIS	-	EXPRESSION TAG	UNP A9CH28
D	-11	HIS	-	EXPRESSION TAG	UNP A9CH28
D	-10	SER	-	EXPRESSION TAG	UNP A9CH28
D	-9	SER	-	EXPRESSION TAG	UNP A9CH28
D	-8	GLY	-	EXPRESSION TAG	UNP A9CH28
D	-7	GLU	-	EXPRESSION TAG	UNP A9CH28
D	-6	ASN	-	EXPRESSION TAG	UNP A9CH28
D	-5	LEU	-	EXPRESSION TAG	UNP A9CH28
D	-4	TYR	-	EXPRESSION TAG	UNP A9CH28
D	-3	PHE	-	EXPRESSION TAG	UNP A9CH28
D	-2	GLN	-	EXPRESSION TAG	UNP A9CH28
D	-1	GLY	-	EXPRESSION TAG	UNP A9CH28
D	0	HIS	-	EXPRESSION TAG	UNP A9CH28

- Molecule 2 is D-fructose (three-letter code: FUD) (formula: C₆H₁₂O₆).



Mol	Chain	Residues	Atoms			ZeroOcc	AltConf
2	A	1	Total	C	O	0	0
			12	6	6		
2	B	1	Total	C	O	0	0
			12	6	6		
2	C	1	Total	C	O	0	0
			12	6	6		

Continued on next page...

Continued from previous page...

Mol	Chain	Residues	Atoms			ZeroOcc	AltConf
2	D	1	Total	C	O	0	0
			12	6	6		

- Molecule 3 is MANGANESE (II) ION (three-letter code: MN) (formula: Mn).

Mol	Chain	Residues	Atoms		ZeroOcc	AltConf
3	A	1	Total	Mn	0	0
			1	1		
3	B	1	Total	Mn	0	0
			1	1		
3	C	1	Total	Mn	0	0
			1	1		
3	D	1	Total	Mn	0	0
			1	1		

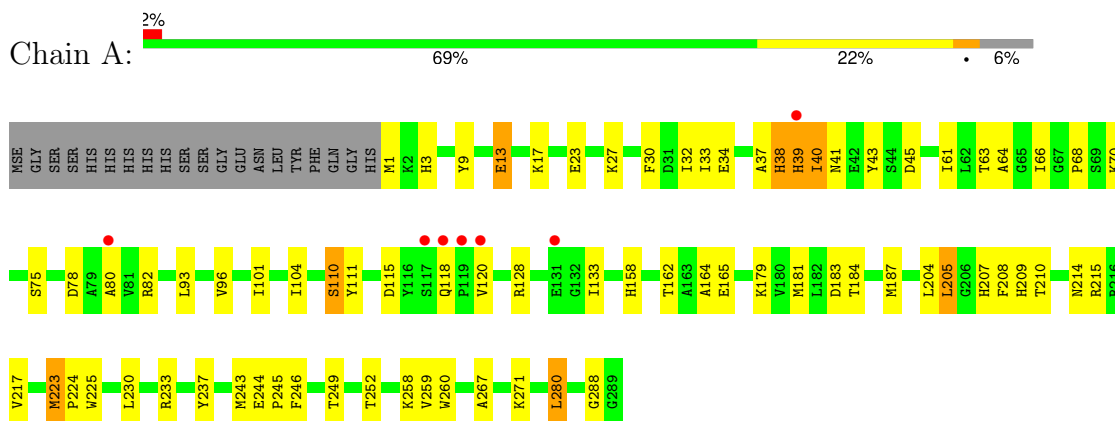
- Molecule 4 is water.

Mol	Chain	Residues	Atoms		ZeroOcc	AltConf
4	A	88	Total	O	0	0
			88	88		
4	B	100	Total	O	0	0
			100	100		
4	C	79	Total	O	0	0
			79	79		
4	D	109	Total	O	0	0
			109	109		

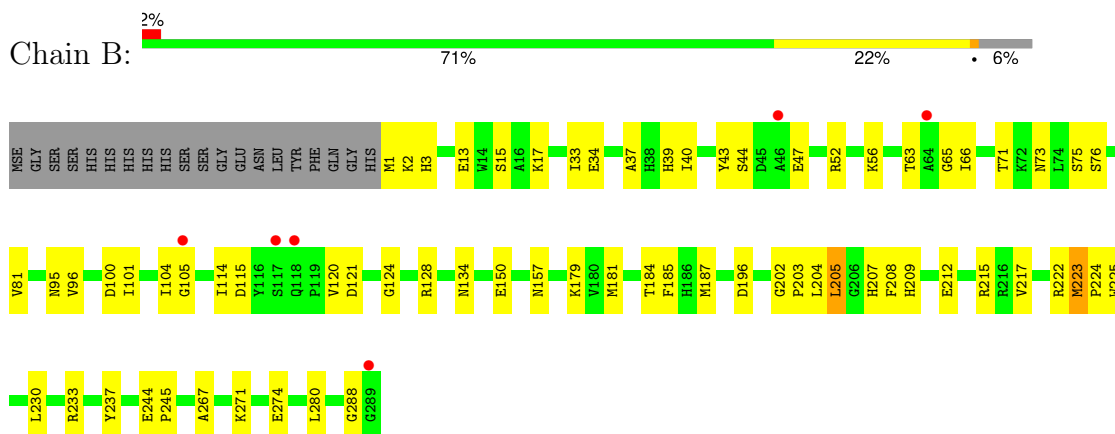
3 Residue-property plots [i](#)

These plots are drawn for all protein, RNA, DNA and oligosaccharide chains in the entry. The first graphic for a chain summarises the proportions of the various outlier classes displayed in the second graphic. The second graphic shows the sequence view annotated by issues in geometry and electron density. Residues are color-coded according to the number of geometric quality criteria for which they contain at least one outlier: green = 0, yellow = 1, orange = 2 and red = 3 or more. A red dot above a residue indicates a poor fit to the electron density ($RSRZ > 2$). Stretches of 2 or more consecutive residues without any outlier are shown as a green connector. Residues present in the sample, but not in the model, are shown in grey.

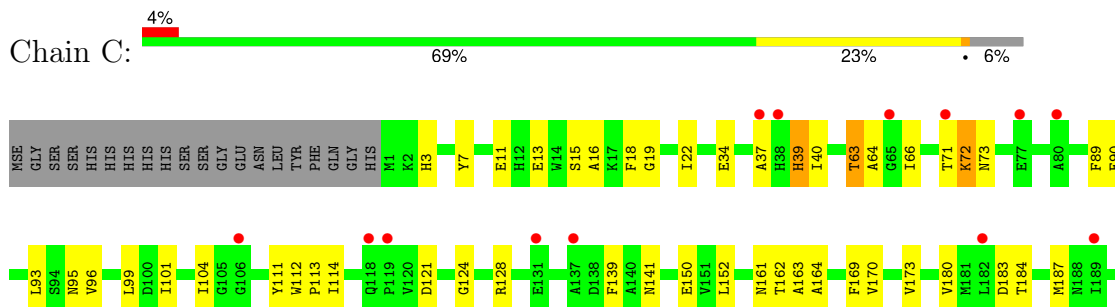
• Molecule 1: D-PSICOSE 3-EPIMERASE



• Molecule 1: D-PSICOSE 3-EPIMERASE



• Molecule 1: D-PSICOSE 3-EPIMERASE





● Molecule 1: D-PSICOSE 3-EPIMERASE



4 Data and refinement statistics

Property	Value	Source
Space group	P 21 21 21	Depositor
Cell constants a, b, c, α , β , γ	103.90Å 113.50Å 133.80Å 90.00° 90.00° 90.00°	Depositor
Resolution (Å)	33.50 – 2.30 35.07 – 2.31	Depositor EDS
% Data completeness (in resolution range)	92.0 (33.50-2.30) 93.3 (35.07-2.31)	Depositor EDS
R_{merge}	0.07	Depositor
R_{sym}	(Not available)	Depositor
$\langle I/\sigma(I) \rangle$ ¹	1.93 (at 2.31Å)	Xtrriage
Refinement program	CNS	Depositor
R, R_{free}	0.192 , 0.239 0.186 , 0.233	Depositor DCC
R_{free} test set	7027 reflections (10.10%)	wwPDB-VP
Wilson B-factor (Å ²)	39.5	Xtrriage
Anisotropy	0.058	Xtrriage
Bulk solvent k_{sol} (e/Å ³), B_{sol} (Å ²)	0.34 , 35.5	EDS
L-test for twinning ²	$\langle L \rangle = 0.49$, $\langle L^2 \rangle = 0.32$	Xtrriage
Estimated twinning fraction	No twinning to report.	Xtrriage
F_o, F_c correlation	0.95	EDS
Total number of atoms	9344	wwPDB-VP
Average B, all atoms (Å ²)	41.0	wwPDB-VP

Xtrriage's analysis on translational NCS is as follows: *The largest off-origin peak in the Patterson function is 3.30% of the height of the origin peak. No significant pseudotranslation is detected.*

¹Intensities estimated from amplitudes.

²Theoretical values of $\langle |L| \rangle$, $\langle L^2 \rangle$ for acentric reflections are 0.5, 0.333 respectively for untwinned datasets, and 0.375, 0.2 for perfectly twinned datasets.

5 Model quality [i](#)

5.1 Standard geometry [i](#)

Bond lengths and bond angles in the following residue types are not validated in this section: FUD, MN

The Z score for a bond length (or angle) is the number of standard deviations the observed value is removed from the expected value. A bond length (or angle) with $|Z| > 5$ is considered an outlier worth inspection. RMSZ is the root-mean-square of all Z scores of the bond lengths (or angles).

Mol	Chain	Bond lengths		Bond angles	
		RMSZ	# Z >5	RMSZ	# Z >5
1	A	0.49	0/2274	0.68	0/3065
1	B	0.49	0/2274	0.67	0/3065
1	C	0.50	0/2274	0.67	0/3065
1	D	0.48	0/2274	0.66	0/3065
All	All	0.49	0/9096	0.67	0/12260

There are no bond length outliers.

There are no bond angle outliers.

There are no chirality outliers.

There are no planarity outliers.

5.2 Too-close contacts [i](#)

In the following table, the Non-H and H(model) columns list the number of non-hydrogen atoms and hydrogen atoms in the chain respectively. The H(added) column lists the number of hydrogen atoms added and optimized by MolProbity. The Clashes column lists the number of clashes within the asymmetric unit, whereas Symm-Clashes lists symmetry-related clashes.

Mol	Chain	Non-H	H(model)	H(added)	Clashes	Symm-Clashes
1	A	2229	0	2179	64	0
1	B	2229	0	2179	58	0
1	C	2229	0	2179	60	0
1	D	2229	0	2179	51	0
2	A	12	0	12	2	0
2	B	12	0	11	2	0
2	C	12	0	11	2	0
2	D	12	0	11	2	0
3	A	1	0	0	0	0

Continued on next page...

Continued from previous page...

Mol	Chain	Non-H	H(model)	H(added)	Clashes	Symm-Clashes
3	B	1	0	0	0	0
3	C	1	0	0	0	0
3	D	1	0	0	0	0
4	A	88	0	0	1	0
4	B	100	0	0	2	0
4	C	79	0	0	3	0
4	D	109	0	0	4	0
All	All	9344	0	8761	231	0

The all-atom clashscore is defined as the number of clashes found per 1000 atoms (including hydrogen atoms). The all-atom clashscore for this structure is 13.

All (231) close contacts within the same asymmetric unit are listed below, sorted by their clash magnitude.

Atom-1	Atom-2	Interatomic distance (Å)	Clash overlap (Å)
1:B:184:THR:HA	1:B:187:MSE:HE3	1.54	0.88
1:D:78:ASP:OD2	1:D:81:VAL:HG23	1.77	0.83
1:C:162:THR:HG22	1:C:164:ALA:N	1.99	0.77
1:A:96:VAL:HG13	1:A:101:ILE:HB	1.67	0.77
1:C:162:THR:HG22	1:C:164:ALA:H	1.49	0.77
1:D:113:PRO:O	1:D:114:ILE:HB	1.85	0.74
1:B:96:VAL:HG13	1:B:101:ILE:HB	1.69	0.74
1:B:96:VAL:HG11	1:B:104:ILE:HD11	1.70	0.74
1:A:39:HIS:O	1:A:41:ASN:N	2.22	0.73
1:A:37:ALA:HA	1:A:40:ILE:HD12	1.69	0.72
1:A:184:THR:HA	1:A:187:MSE:HE3	1.71	0.71
1:B:73:ASN:HD22	1:B:75:SER:H	1.38	0.71
1:A:37:ALA:HB3	1:A:66:ILE:HG12	1.71	0.70
1:C:184:THR:HA	1:C:187:MSE:HE3	1.73	0.70
1:D:9:TYR:CD1	1:D:245:PRO:HG2	2.27	0.69
1:A:184:THR:N	1:A:187:MSE:HE3	2.09	0.68
1:A:184:THR:CA	1:A:187:MSE:HE3	2.26	0.66
1:B:215:ARG:HD2	4:B:1315:HOH:O	1.96	0.66
1:A:64:ALA:HB3	1:A:104:ILE:HD13	1.78	0.65
1:D:86:LYS:O	1:D:90:GLU:HG3	1.97	0.65
1:A:162:THR:HG21	4:D:1384:HOH:O	1.97	0.65
1:C:111:TYR:CZ	1:C:114:ILE:HG13	2.31	0.65
1:C:184:THR:CA	1:C:187:MSE:HE3	2.28	0.64
1:C:184:THR:N	1:C:187:MSE:HE3	2.12	0.64
1:D:45:ASP:OD2	1:D:98:LYS:HE2	1.98	0.64
1:B:215:ARG:HH22	2:B:1301:FUD:H12	1.63	0.64

Continued on next page...

Continued from previous page...

Atom-1	Atom-2	Interatomic distance (Å)	Clash overlap (Å)
1:B:40:ILE:HG22	1:B:95:ASN:HB3	1.79	0.64
1:D:223:MSE:HB3	1:D:225:TRP:CE2	2.32	0.63
1:B:1:MSE:HE2	1:B:237:TYR:HD2	1.63	0.63
1:A:162:THR:HG22	1:A:164:ALA:N	2.14	0.63
1:C:249:THR:HG22	1:C:259:VAL:O	1.97	0.63
1:D:89:PHE:O	1:D:93:LEU:HD13	1.99	0.63
1:A:70:LYS:HE2	1:A:115:ASP:HB2	1.81	0.63
1:D:96:VAL:HG13	1:D:101:ILE:HB	1.79	0.62
1:B:215:ARG:HH22	2:B:1301:FUD:C1	2.12	0.62
1:D:184:THR:HA	1:D:187:MSE:HE3	1.82	0.62
1:A:34:GLU:OE1	1:A:63:THR:CG2	2.47	0.62
1:B:15:SER:HA	1:B:39:HIS:NE2	2.15	0.62
1:A:34:GLU:OE1	1:A:63:THR:HG22	1.99	0.62
1:B:121:ASP:OD2	1:B:124:GLY:HA3	2.00	0.61
1:C:96:VAL:HG13	1:C:101:ILE:HB	1.81	0.60
1:D:183:ASP:O	1:D:187:MSE:HG3	2.00	0.60
1:A:17:LYS:HZ2	1:A:43:TYR:HE1	1.47	0.60
1:B:37:ALA:HB3	1:B:66:ILE:HG12	1.82	0.60
1:D:113:PRO:O	1:D:114:ILE:CB	2.49	0.60
1:C:37:ALA:HB3	1:C:66:ILE:HG12	1.83	0.60
1:A:162:THR:HG22	1:A:164:ALA:H	1.66	0.60
1:A:9:TYR:CD1	1:A:245:PRO:HG2	2.37	0.60
1:D:1:MSE:HE2	1:D:237:TYR:HD2	1.65	0.59
1:B:73:ASN:HD21	1:B:76:SER:H	1.48	0.59
1:D:244:GLU:O	1:D:244:GLU:HG2	2.02	0.59
1:C:248:LYS:HD3	4:C:1331:HOH:O	2.02	0.58
1:A:223:MSE:CE	1:A:223:MSE:HA	2.34	0.58
1:A:223:MSE:HA	1:A:223:MSE:HE2	1.86	0.58
1:B:150:GLU:CD	1:B:181:MSE:HE2	2.24	0.58
1:D:258:LYS:HG3	1:D:260:TRP:CZ2	2.38	0.58
1:C:3:HIS:HE1	1:C:288:GLY:O	1.86	0.58
1:C:40:ILE:HG22	1:C:95:ASN:HB3	1.85	0.58
1:B:230:LEU:HD12	1:B:233:ARG:NH2	2.18	0.57
1:B:196:ASP:OD2	1:D:230:LEU:HD23	2.03	0.57
1:A:215:ARG:HH22	2:A:1300:FUD:H12	1.70	0.57
1:A:223:MSE:HB3	1:A:225:TRP:CE2	2.40	0.56
1:A:32:ILE:HG12	1:A:61:ILE:HB	1.87	0.56
1:A:187:MSE:HE1	1:A:208:PHE:CE1	2.40	0.56
1:C:267:ALA:HB1	1:C:271:LYS:HB3	1.87	0.56
1:B:267:ALA:HB1	1:B:271:LYS:HB3	1.88	0.56
1:C:71:THR:HG22	1:C:72:LYS:HD2	1.87	0.56

Continued on next page...

Continued from previous page...

Atom-1	Atom-2	Interatomic distance (Å)	Clash overlap (Å)
1:C:89:PHE:O	1:C:93:LEU:HD23	2.06	0.56
1:B:34:GLU:OE1	1:B:63:THR:HG22	2.05	0.55
1:A:17:LYS:NZ	1:A:43:TYR:HE1	2.03	0.55
1:B:44:SER:OG	1:B:47:GLU:HG3	2.07	0.55
1:B:73:ASN:ND2	1:B:76:SER:H	2.04	0.55
1:D:222:ARG:HD2	4:D:1385:HOH:O	2.07	0.55
1:A:162:THR:CG2	1:A:164:ALA:H	2.19	0.55
1:A:17:LYS:NZ	1:A:43:TYR:CE1	2.73	0.54
1:C:169:PHE:O	1:C:173:VAL:HG23	2.07	0.54
1:C:112:TRP:HA	1:C:113:PRO:C	2.28	0.54
1:C:34:GLU:HG3	1:C:63:THR:HG22	1.90	0.54
1:A:40:ILE:HA	1:A:43:TYR:HD2	1.73	0.54
1:C:215:ARG:HH22	2:C:1302:FUD:H12	1.72	0.54
1:B:52:ARG:O	1:B:56:LYS:HG2	2.08	0.53
1:D:223:MSE:HE3	4:D:1306:HOH:O	2.09	0.53
1:A:215:ARG:HH22	2:A:1300:FUD:C1	2.21	0.53
1:B:34:GLU:HA	1:B:63:THR:O	2.08	0.53
1:C:90:GLU:HG2	1:C:139:PHE:CE2	2.44	0.53
1:A:162:THR:HG23	4:A:1310:HOH:O	2.08	0.53
1:D:52:ARG:NH1	1:D:100:ASP:HB2	2.24	0.53
1:D:215:ARG:HH22	2:D:1303:FUD:C1	2.22	0.53
1:C:71:THR:C	1:C:72:LYS:HD2	2.29	0.53
1:D:150:GLU:CD	1:D:181:MSE:HE2	2.29	0.52
1:A:187:MSE:HE1	1:A:208:PHE:CZ	2.44	0.52
1:D:184:THR:HG22	1:D:187:MSE:CE	2.39	0.52
1:C:223:MSE:HG3	1:C:224:PRO:HD2	1.90	0.52
1:C:3:HIS:HD2	4:C:1309:HOH:O	1.93	0.52
1:D:223:MSE:HB3	1:D:225:TRP:NE1	2.25	0.52
1:C:223:MSE:HA	1:C:223:MSE:HE2	1.92	0.51
1:A:179:LYS:HB3	1:A:204:LEU:O	2.10	0.51
1:B:184:THR:CA	1:B:187:MSE:HE3	2.34	0.51
1:B:205:LEU:HD13	1:B:237:TYR:CE1	2.44	0.51
1:D:223:MSE:HE2	1:D:223:MSE:HA	1.92	0.51
1:B:34:GLU:OE1	1:B:63:THR:CG2	2.59	0.51
1:B:223:MSE:HG3	1:B:224:PRO:HD2	1.91	0.51
1:A:38:HIS:ND1	1:A:39:HIS:N	2.59	0.51
1:D:184:THR:HA	1:D:187:MSE:CE	2.40	0.51
1:A:3:HIS:HE1	1:A:288:GLY:O	1.93	0.51
1:A:70:LYS:HG2	1:A:111:TYR:CE2	2.46	0.51
1:D:215:ARG:HH22	2:D:1303:FUD:H12	1.75	0.50
1:B:66:ILE:HD12	1:B:104:ILE:HG21	1.93	0.50

Continued on next page...

Continued from previous page...

Atom-1	Atom-2	Interatomic distance (Å)	Clash overlap (Å)
1:B:223:MSE:HA	1:B:223:MSE:CE	2.42	0.50
1:C:223:MSE:HA	1:C:223:MSE:CE	2.41	0.50
1:A:82:ARG:HH11	1:A:82:ARG:HG3	1.76	0.50
1:A:78:ASP:OD1	1:A:80:ALA:N	2.44	0.49
1:A:96:VAL:HG21	1:A:104:ILE:HD11	1.94	0.49
1:C:187:MSE:HE1	1:C:208:PHE:CE1	2.47	0.49
1:B:223:MSE:HG3	1:B:224:PRO:CD	2.42	0.49
1:A:110:SER:OG	1:A:111:TYR:N	2.46	0.49
1:A:1:MSE:HE2	1:A:237:TYR:O	2.13	0.49
1:B:71:THR:O	1:B:81:VAL:HG13	2.13	0.49
1:B:52:ARG:CZ	1:B:56:LYS:HE3	2.43	0.49
1:C:89:PHE:O	1:C:93:LEU:CD2	2.61	0.49
1:D:223:MSE:HG3	1:D:224:PRO:HD2	1.95	0.49
1:D:110:SER:OG	1:D:111:TYR:N	2.45	0.49
1:C:64:ALA:HB3	1:C:104:ILE:HD13	1.94	0.48
1:D:137:ALA:CB	1:D:175:LYS:HG3	2.43	0.48
1:C:223:MSE:HB3	1:C:225:TRP:CE2	2.49	0.48
1:A:23:GLU:O	1:A:27:LYS:HG2	2.12	0.48
1:A:205:LEU:HD13	1:A:237:TYR:CE1	2.47	0.48
1:C:90:GLU:HG2	1:C:139:PHE:CD2	2.48	0.48
1:D:267:ALA:HB1	1:D:271:LYS:HB3	1.94	0.48
1:A:30:PHE:CE1	1:A:280:LEU:HG	2.48	0.48
1:B:73:ASN:HD21	1:B:76:SER:N	2.10	0.48
1:D:38:HIS:C	1:D:38:HIS:ND1	2.67	0.48
1:D:112:TRP:HA	1:D:113:PRO:C	2.34	0.48
1:A:214:ASN:O	1:A:215:ARG:HB2	2.14	0.47
1:D:223:MSE:HA	1:D:223:MSE:CE	2.44	0.47
1:C:111:TYR:CE2	1:C:114:ILE:HA	2.49	0.47
1:C:34:GLU:OE2	1:C:63:THR:CG2	2.63	0.47
1:B:75:SER:O	1:B:128:ARG:HD2	2.14	0.47
1:C:170:VAL:HG21	1:C:180:VAL:HG23	1.96	0.47
1:A:162:THR:HG22	1:A:165:GLU:H	1.78	0.47
1:B:63:THR:HG21	1:B:207:HIS:CE1	2.50	0.47
1:B:65:GLY:HA2	1:B:105:GLY:O	2.14	0.47
1:C:71:THR:O	1:C:72:LYS:HD2	2.14	0.47
1:C:15:SER:HA	1:C:39:HIS:HE1	1.79	0.47
1:D:214:ASN:O	1:D:215:ARG:HB2	2.15	0.47
1:C:96:VAL:HG21	1:C:104:ILE:HD11	1.97	0.47
1:D:3:HIS:HD2	4:D:1305:HOH:O	1.98	0.47
1:A:183:ASP:O	1:A:187:MSE:HG3	2.14	0.46
1:A:217:VAL:HG12	1:A:245:PRO:HG3	1.96	0.46

Continued on next page...

Continued from previous page...

Atom-1	Atom-2	Interatomic distance (Å)	Clash overlap (Å)
1:A:223:MSE:HG3	1:A:224:PRO:HD2	1.96	0.46
1:C:40:ILE:CD1	1:C:99:LEU:HD12	2.45	0.46
1:A:267:ALA:HB1	1:A:271:LYS:HB3	1.97	0.46
1:D:77:GLU:HG3	1:D:128:ARG:CZ	2.45	0.46
1:C:150:GLU:HG2	1:C:152:LEU:HD23	1.97	0.46
1:C:214:ASN:O	1:C:215:ARG:HB2	2.16	0.46
1:B:223:MSE:HB3	1:B:225:TRP:CE2	2.50	0.46
1:B:187:MSE:HE1	1:B:208:PHE:CZ	2.50	0.46
1:C:261:ARG:NE	1:C:263:LEU:HD21	2.31	0.46
1:D:34:GLU:OE1	1:D:63:THR:CG2	2.64	0.46
1:C:40:ILE:HD13	1:C:99:LEU:HD12	1.98	0.46
1:A:75:SER:O	1:A:128:ARG:HD2	2.15	0.46
1:C:252:THR:HG22	1:C:256:ASP:OD2	2.16	0.46
1:D:181:MSE:HE1	1:D:209:HIS:CE1	2.52	0.45
1:A:63:THR:HG21	1:A:207:HIS:CE1	2.52	0.45
1:A:120:VAL:HG13	1:A:158:HIS:CD2	2.52	0.45
1:A:64:ALA:HB3	1:A:104:ILE:CD1	2.43	0.45
1:B:179:LYS:HB3	1:B:204:LEU:O	2.16	0.45
1:C:121:ASP:OD2	1:C:124:GLY:HA3	2.17	0.45
1:C:162:THR:CG2	1:C:163:ALA:N	2.79	0.45
1:A:37:ALA:CB	1:A:66:ILE:HG12	2.42	0.45
1:A:68:PRO:O	1:A:111:TYR:HB2	2.16	0.45
1:D:257:ILE:HG22	1:D:257:ILE:O	2.16	0.45
1:C:11:GLU:HG3	1:C:16:ALA:HB3	1.99	0.45
1:C:215:ARG:HH22	2:C:1302:FUD:C1	2.30	0.44
1:C:19:GLY:O	1:C:22:ILE:HG12	2.18	0.44
1:D:53:LYS:HE2	1:D:57:ASP:OD2	2.17	0.44
1:B:17:LYS:NZ	1:B:43:TYR:CE1	2.81	0.44
1:C:162:THR:CG2	1:C:164:ALA:H	2.23	0.44
1:B:37:ALA:HB3	1:B:66:ILE:CG1	2.46	0.44
1:A:210:THR:OG1	1:A:243:MSE:HA	2.17	0.44
1:C:150:GLU:HG2	1:C:152:LEU:CD2	2.47	0.44
1:A:78:ASP:OD1	1:A:80:ALA:HB3	2.17	0.44
1:C:66:ILE:HG13	1:C:104:ILE:HG23	1.99	0.44
1:C:268:ASP:O	1:C:272:MSE:HG2	2.18	0.44
1:D:3:HIS:HE1	1:D:288:GLY:O	2.00	0.44
1:C:243:MSE:C	1:C:245:PRO:HD3	2.39	0.43
1:D:77:GLU:HG3	1:D:128:ARG:NH2	2.33	0.43
1:A:249:THR:HG22	1:A:259:VAL:O	2.19	0.43
1:C:124:GLY:HA3	1:C:128:ARG:HH21	1.83	0.43
1:D:17:LYS:HB3	1:D:43:TYR:OH	2.18	0.43

Continued on next page...

Continued from previous page...

Atom-1	Atom-2	Interatomic distance (Å)	Clash overlap (Å)
1:B:73:ASN:HD22	1:B:75:SER:N	2.10	0.43
1:C:152:LEU:O	1:C:161:ASN:HA	2.18	0.43
1:D:18:PHE:O	1:D:21:TYR:HB2	2.19	0.43
1:B:3:HIS:HE1	1:B:288:GLY:O	2.01	0.43
1:C:283:SER:O	1:C:287:LEU:HB2	2.19	0.43
1:B:223:MSE:HA	1:B:224:PRO:HD3	1.83	0.42
1:B:33:ILE:HG23	1:B:33:ILE:O	2.18	0.42
1:B:202:GLY:HA3	1:B:203:PRO:HD3	1.83	0.42
1:C:7:TYR:CZ	1:C:18:PHE:HB3	2.54	0.42
1:A:260:TRP:O	1:D:122:LYS:HE2	2.19	0.42
1:C:37:ALA:CB	1:C:66:ILE:HG12	2.48	0.42
1:C:183:ASP:O	1:C:187:MSE:HG3	2.20	0.42
1:A:32:ILE:CG2	1:A:33:ILE:N	2.82	0.42
1:C:215:ARG:HD2	4:C:1380:HOH:O	2.20	0.42
1:A:70:LYS:CE	1:A:115:ASP:HB2	2.48	0.42
1:C:71:THR:HG22	1:C:71:THR:O	2.19	0.42
1:D:226:HIS:O	1:D:230:LEU:HD13	2.20	0.42
1:A:13:GLU:OE2	1:A:252:THR:CB	2.68	0.42
1:B:181:MSE:HE1	1:B:209:HIS:CE1	2.55	0.42
1:B:222:ARG:HD2	4:B:1306:HOH:O	2.19	0.42
1:D:202:GLY:HA3	1:D:203:PRO:HD3	1.87	0.42
1:B:244:GLU:O	1:B:244:GLU:HG2	2.20	0.41
1:A:181:MSE:HE1	1:A:209:HIS:NE2	2.35	0.41
1:B:217:VAL:HG12	1:B:245:PRO:CG	2.50	0.41
1:A:244:GLU:HG2	1:A:246:PHE:CE2	2.55	0.41
1:B:2:LYS:N	1:B:2:LYS:HD2	2.34	0.41
1:B:56:LYS:NZ	1:B:100:ASP:OD2	2.54	0.41
1:D:181:MSE:CE	1:D:209:HIS:CE1	3.04	0.41
1:A:66:ILE:HD11	1:A:104:ILE:HD12	2.02	0.41
1:D:212:GLU:CD	1:D:221:GLY:H	2.24	0.41
1:B:185:PHE:CG	1:B:215:ARG:HD3	2.56	0.41
1:D:37:ALA:CB	1:D:66:ILE:HG12	2.51	0.41
1:D:56:LYS:HB3	1:D:56:LYS:HE2	1.88	0.41
1:D:170:VAL:HG21	1:D:180:VAL:HG23	2.03	0.41
1:B:114:ILE:HD12	1:B:157:ASN:HA	2.01	0.41
1:B:212:GLU:OE1	1:B:223:MSE:HB2	2.22	0.40
1:A:133:ILE:HD13	1:A:133:ILE:HA	1.84	0.40
1:B:52:ARG:NH1	1:B:56:LYS:HE3	2.37	0.40
1:B:71:THR:C	1:B:81:VAL:HG13	2.42	0.40
1:B:114:ILE:CG2	1:B:115:ASP:N	2.85	0.40
1:B:184:THR:HA	1:B:187:MSE:CE	2.38	0.40

There are no symmetry-related clashes.

5.3 Torsion angles [i](#)

5.3.1 Protein backbone [i](#)

In the following table, the Percentiles column shows the percent Ramachandran outliers of the chain as a percentile score with respect to all X-ray entries followed by that with respect to entries of similar resolution.

The Analysed column shows the number of residues for which the backbone conformation was analysed, and the total number of residues.

Mol	Chain	Analysed	Favoured	Allowed	Outliers	Percentiles	
1	A	287/309 (93%)	277 (96%)	7 (2%)	3 (1%)	15	17
1	B	287/309 (93%)	282 (98%)	5 (2%)	0	100	100
1	C	287/309 (93%)	281 (98%)	6 (2%)	0	100	100
1	D	287/309 (93%)	274 (96%)	11 (4%)	2 (1%)	22	26
All	All	1148/1236 (93%)	1114 (97%)	29 (2%)	5 (0%)	34	42

All (5) Ramachandran outliers are listed below:

Mol	Chain	Res	Type
1	A	40	ILE
1	D	113	PRO
1	D	114	ILE
1	A	39	HIS
1	A	38	HIS

5.3.2 Protein sidechains [i](#)

In the following table, the Percentiles column shows the percent sidechain outliers of the chain as a percentile score with respect to all X-ray entries followed by that with respect to entries of similar resolution.

The Analysed column shows the number of residues for which the sidechain conformation was analysed, and the total number of residues.

Mol	Chain	Analysed	Rotameric	Outliers	Percentiles	
1	A	227/237 (96%)	216 (95%)	11 (5%)	25	36
1	B	227/237 (96%)	220 (97%)	7 (3%)	40	55
1	C	227/237 (96%)	216 (95%)	11 (5%)	25	36

Continued on next page...

Continued from previous page...

Mol	Chain	Analysed	Rotameric	Outliers	Percentiles	
1	D	227/237 (96%)	218 (96%)	9 (4%)	31	44
All	All	908/948 (96%)	870 (96%)	38 (4%)	30	42

All (38) residues with a non-rotameric sidechain are listed below:

Mol	Chain	Res	Type
1	A	13	GLU
1	A	45	ASP
1	A	93	LEU
1	A	110	SER
1	A	118	GLN
1	A	205	LEU
1	A	223	MSE
1	A	230	LEU
1	A	233	ARG
1	A	258	LYS
1	A	280	LEU
1	B	13	GLU
1	B	120	VAL
1	B	134	ASN
1	B	205	LEU
1	B	223	MSE
1	B	274	GLU
1	B	280	LEU
1	C	13	GLU
1	C	39	HIS
1	C	63	THR
1	C	72	LYS
1	C	73	ASN
1	C	141	ASN
1	C	205	LEU
1	C	223	MSE
1	C	230	LEU
1	C	258	LYS
1	C	280	LEU
1	D	38	HIS
1	D	45	ASP
1	D	63	THR
1	D	70	LYS
1	D	120	VAL
1	D	199	ARG
1	D	205	LEU

Continued on next page...

Continued from previous page...

Mol	Chain	Res	Type
1	D	223	MSE
1	D	280	LEU

Sometimes sidechains can be flipped to improve hydrogen bonding and reduce clashes. All (14) such sidechains are listed below:

Mol	Chain	Res	Type
1	A	3	HIS
1	A	141	ASN
1	B	3	HIS
1	B	73	ASN
1	B	95	ASN
1	B	134	ASN
1	B	141	ASN
1	C	3	HIS
1	C	73	ASN
1	C	118	GLN
1	C	141	ASN
1	C	146	ASN
1	D	3	HIS
1	D	73	ASN

5.3.3 RNA [i](#)

There are no RNA molecules in this entry.

5.4 Non-standard residues in protein, DNA, RNA chains [i](#)

There are no non-standard protein/DNA/RNA residues in this entry.

5.5 Carbohydrates [i](#)

There are no monosaccharides in this entry.

5.6 Ligand geometry [i](#)

Of 8 ligands modelled in this entry, 4 are monoatomic - leaving 4 for Mogul analysis.

In the following table, the Counts columns list the number of bonds (or angles) for which Mogul statistics could be retrieved, the number of bonds (or angles) that are observed in the model and

the number of bonds (or angles) that are defined in the Chemical Component Dictionary. The Link column lists molecule types, if any, to which the group is linked. The Z score for a bond length (or angle) is the number of standard deviations the observed value is removed from the expected value. A bond length (or angle) with $|Z| > 2$ is considered an outlier worth inspection. RMSZ is the root-mean-square of all Z scores of the bond lengths (or angles).

Mol	Type	Chain	Res	Link	Bond lengths			Bond angles		
					Counts	RMSZ	# Z > 2	Counts	RMSZ	# Z > 2
2	FUD	B	1301	3	11,11,11	1.60	3 (27%)	10,14,14	0.67	0
2	FUD	A	1300	3	11,11,11	1.67	3 (27%)	10,14,14	0.65	0
2	FUD	C	1302	3	11,11,11	1.97	3 (27%)	10,14,14	0.64	0
2	FUD	D	1303	3	11,11,11	1.85	3 (27%)	10,14,14	0.54	0

In the following table, the Chirals column lists the number of chiral outliers, the number of chiral centers analysed, the number of these observed in the model and the number defined in the Chemical Component Dictionary. Similar counts are reported in the Torsion and Rings columns. '-' means no outliers of that kind were identified.

Mol	Type	Chain	Res	Link	Chirals	Torsions	Rings
2	FUD	B	1301	3	-	1/16/16/16	-
2	FUD	A	1300	3	-	2/16/16/16	-
2	FUD	C	1302	3	-	2/16/16/16	-
2	FUD	D	1303	3	-	2/16/16/16	-

All (12) bond length outliers are listed below:

Mol	Chain	Res	Type	Atoms	Z	Observed(Å)	Ideal(Å)
2	C	1302	FUD	C4-C3	3.96	1.62	1.53
2	D	1303	FUD	C4-C3	3.27	1.60	1.53
2	D	1303	FUD	C5-C4	3.27	1.59	1.53
2	C	1302	FUD	C5-C4	3.24	1.59	1.53
2	B	1301	FUD	C5-C4	3.09	1.58	1.53
2	A	1300	FUD	C5-C4	2.85	1.58	1.53
2	A	1300	FUD	C4-C3	2.78	1.59	1.53
2	C	1302	FUD	C1-C2	2.75	1.57	1.50
2	D	1303	FUD	C1-C2	2.62	1.57	1.50
2	B	1301	FUD	C4-C3	2.34	1.58	1.53
2	A	1300	FUD	C1-C2	2.33	1.56	1.50
2	B	1301	FUD	C1-C2	2.19	1.56	1.50

There are no bond angle outliers.

There are no chirality outliers.

All (7) torsion outliers are listed below:

Mol	Chain	Res	Type	Atoms
2	A	1300	FUD	O1-C1-C2-C3
2	A	1300	FUD	O1-C1-C2-O2
2	C	1302	FUD	O1-C1-C2-C3
2	C	1302	FUD	O1-C1-C2-O2
2	B	1301	FUD	O1-C1-C2-O2
2	D	1303	FUD	O1-C1-C2-O2
2	D	1303	FUD	O1-C1-C2-C3

There are no ring outliers.

4 monomers are involved in 8 short contacts:

Mol	Chain	Res	Type	Clashes	Symm-Clashes
2	B	1301	FUD	2	0
2	A	1300	FUD	2	0
2	C	1302	FUD	2	0
2	D	1303	FUD	2	0

5.7 Other polymers [i](#)

There are no such residues in this entry.

5.8 Polymer linkage issues [i](#)

There are no chain breaks in this entry.

6 Fit of model and data

6.1 Protein, DNA and RNA chains

In the following table, the column labelled ‘#RSRZ > 2’ contains the number (and percentage) of RSRZ outliers, followed by percent RSRZ outliers for the chain as percentile scores relative to all X-ray entries and entries of similar resolution. The OWAB column contains the minimum, median, 95th percentile and maximum values of the occupancy-weighted average B-factor per residue. The column labelled ‘Q < 0.9’ lists the number of (and percentage) of residues with an average occupancy less than 0.9.

Mol	Chain	Analysed	<RSRZ>	#RSRZ>2	OWAB(Å ²)	Q<0.9
1	A	283/309 (91%)	-0.03	7 (2%) 57 64	26, 39, 63, 86	0
1	B	283/309 (91%)	-0.05	6 (2%) 63 70	25, 39, 60, 75	0
1	C	283/309 (91%)	0.15	13 (4%) 32 39	26, 41, 57, 79	0
1	D	283/309 (91%)	-0.06	5 (1%) 68 74	24, 40, 65, 81	0
All	All	1132/1236 (91%)	0.00	31 (2%) 54 62	24, 40, 63, 86	0

All (31) RSRZ outliers are listed below:

Mol	Chain	Res	Type	RSRZ
1	B	289	GLY	4.4
1	A	118	GLN	4.2
1	D	118	GLN	4.0
1	D	289	GLY	3.7
1	C	118	GLN	3.3
1	A	39	HIS	3.2
1	B	118	GLN	3.1
1	C	119	PRO	3.1
1	A	117	SER	2.9
1	A	131	GLU	2.8
1	D	39	HIS	2.7
1	A	119	PRO	2.6
1	A	120	VAL	2.6
1	D	119	PRO	2.5
1	C	38	HIS	2.5
1	C	106	GLY	2.4
1	C	77	GLU	2.3
1	C	37	ALA	2.3
1	C	137	ALA	2.2
1	B	117	SER	2.2
1	C	65	GLY	2.1

Continued on next page...

Continued from previous page...

Mol	Chain	Res	Type	RSRZ
1	C	131	GLU	2.1
1	B	46	ALA	2.1
1	C	71	THR	2.1
1	D	115	ASP	2.1
1	A	80	ALA	2.1
1	C	182	LEU	2.0
1	B	64	ALA	2.0
1	C	189	ILE	2.0
1	C	80	ALA	2.0
1	B	105	GLY	2.0

6.2 Non-standard residues in protein, DNA, RNA chains [i](#)

There are no non-standard protein/DNA/RNA residues in this entry.

6.3 Carbohydrates [i](#)

There are no monosaccharides in this entry.

6.4 Ligands [i](#)

In the following table, the Atoms column lists the number of modelled atoms in the group and the number defined in the chemical component dictionary. The B-factors column lists the minimum, median, 95th percentile and maximum values of B factors of atoms in the group. The column labelled 'Q<0.9' lists the number of atoms with occupancy less than 0.9.

Mol	Type	Chain	Res	Atoms	RSCC	RSR	B-factors(Å ²)	Q<0.9
2	FUD	A	1300	12/12	0.80	0.34	53,62,68,71	0
2	FUD	D	1303	12/12	0.87	0.27	53,62,69,71	0
2	FUD	C	1302	12/12	0.88	0.32	42,53,63,66	0
2	FUD	B	1301	12/12	0.88	0.37	60,66,72,74	0
3	MN	B	1002	1/1	0.99	0.15	36,36,36,36	0
3	MN	D	1001	1/1	0.99	0.11	38,38,38,38	0
3	MN	C	1003	1/1	1.00	0.15	34,34,34,34	0
3	MN	A	1004	1/1	1.00	0.15	32,32,32,32	0

6.5 Other polymers [i](#)

There are no such residues in this entry.