



Full wwPDB X-ray Structure Validation Report ⓘ

Aug 27, 2023 – 03:20 PM EDT

PDB ID : 3HO1
Title : Crystal structure of T. thermophilus Argonaute N546 mutant protein complexed with DNA guide strand and 12-nt RNA target strand
Authors : Wang, Y.; Li, H.; Sheng, G.; Patel, D.J.
Deposited on : 2009-06-01
Resolution : 2.60 Å(reported)

This is a Full wwPDB X-ray Structure Validation Report for a publicly released PDB entry.

We welcome your comments at validation@mail.wwpdb.org

A user guide is available at

<https://www.wwpdb.org/validation/2017/XrayValidationReportHelp>

with specific help available everywhere you see the ⓘ symbol.

The types of validation reports are described at

<http://www.wwpdb.org/validation/2017/FAQs#types>.

The following versions of software and data (see [references ⓘ](#)) were used in the production of this report:

MolProbity : 4.02b-467
Xtriage (Phenix) : 1.13
EDS : 2.35
Percentile statistics : 20191225.v01 (using entries in the PDB archive December 25th 2019)
Refmac : 5.8.0158
CCP4 : 7.0.044 (Gargrove)
Ideal geometry (proteins) : Engh & Huber (2001)
Ideal geometry (DNA, RNA) : Parkinson et al. (1996)
Validation Pipeline (wwPDB-VP) : 2.35

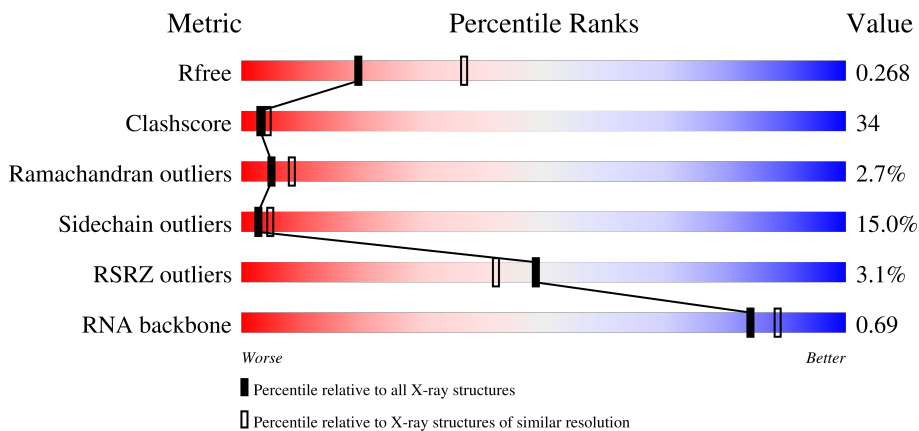
1 Overall quality at a glance

The following experimental techniques were used to determine the structure:

X-RAY DIFFRACTION

The reported resolution of this entry is 2.60 Å.

Percentile scores (ranging between 0-100) for global validation metrics of the entry are shown in the following graphic. The table shows the number of entries on which the scores are based.



Metric	Whole archive (#Entries)	Similar resolution (#Entries, resolution range(Å))
R_{free}	130704	3163 (2.60-2.60)
Clashscore	141614	3518 (2.60-2.60)
Ramachandran outliers	138981	3455 (2.60-2.60)
Sidechain outliers	138945	3455 (2.60-2.60)
RSRZ outliers	127900	3104 (2.60-2.60)
RNA backbone	3102	1040 (2.90-2.30)

The table below summarises the geometric issues observed across the polymeric chains and their fit to the electron density. The red, orange, yellow and green segments of the lower bar indicate the fraction of residues that contain outliers for ≥ 3 , 2, 1 and 0 types of geometric quality criteria respectively. A grey segment represents the fraction of residues that are not modelled. The numeric value for each fraction is indicated below the corresponding segment, with a dot representing fractions $\leq 5\%$. The upper red bar (where present) indicates the fraction of residues that have poor fit to the electron density. The numeric value is given above the bar.

Mol	Chain	Length	Quality of chain
1	A	685	
2	X	21	
3	Y	12	

2 Entry composition [i](#)

There are 5 unique types of molecules in this entry. The entry contains 5767 atoms, of which 0 are hydrogens and 0 are deuteriums.

In the tables below, the ZeroOcc column contains the number of atoms modelled with zero occupancy, the AltConf column contains the number of residues with at least one atom in alternate conformation and the Trace column contains the number of residues modelled with at most 2 atoms.

- Molecule 1 is a protein called argonaute.

Mol	Chain	Residues	Atoms					ZeroOcc	AltConf	Trace
			Total	C	N	O	S			
1	A	673	5145	3292	974	873	6	0	0	0

There is a discrepancy between the modelled and reference sequences:

Chain	Residue	Modelled	Actual	Comment	Reference
A	546	ASN	ASP	engineered mutation	UNP Q746M7

- Molecule 2 is a DNA chain called 5'-D(P*TP*GP*AP*GP*GP*TP*AP*GP*TP*AP*GP*GP*TP*TP*GP*TP*AP*T*AP*GP*T)-3'.

Mol	Chain	Residues	Atoms					ZeroOcc	AltConf	Trace
			Total	C	N	O	P			
2	X	15	299	140	58	87	14	0	0	1

- Molecule 3 is a RNA chain called 5'-R(P*CP*CP*UP*AP*CP*UP*AP*CP*CP*UP*CP*G)-3'.

Mol	Chain	Residues	Atoms					ZeroOcc	AltConf	Trace
			Total	C	N	O	P			
3	Y	12	229	101	34	82	12	0	0	0

- Molecule 4 is MAGNESIUM ION (three-letter code: MG) (formula: Mg).

Mol	Chain	Residues	Atoms		ZeroOcc	AltConf
4	X	1	Total	Mg	0	0
			1	1		

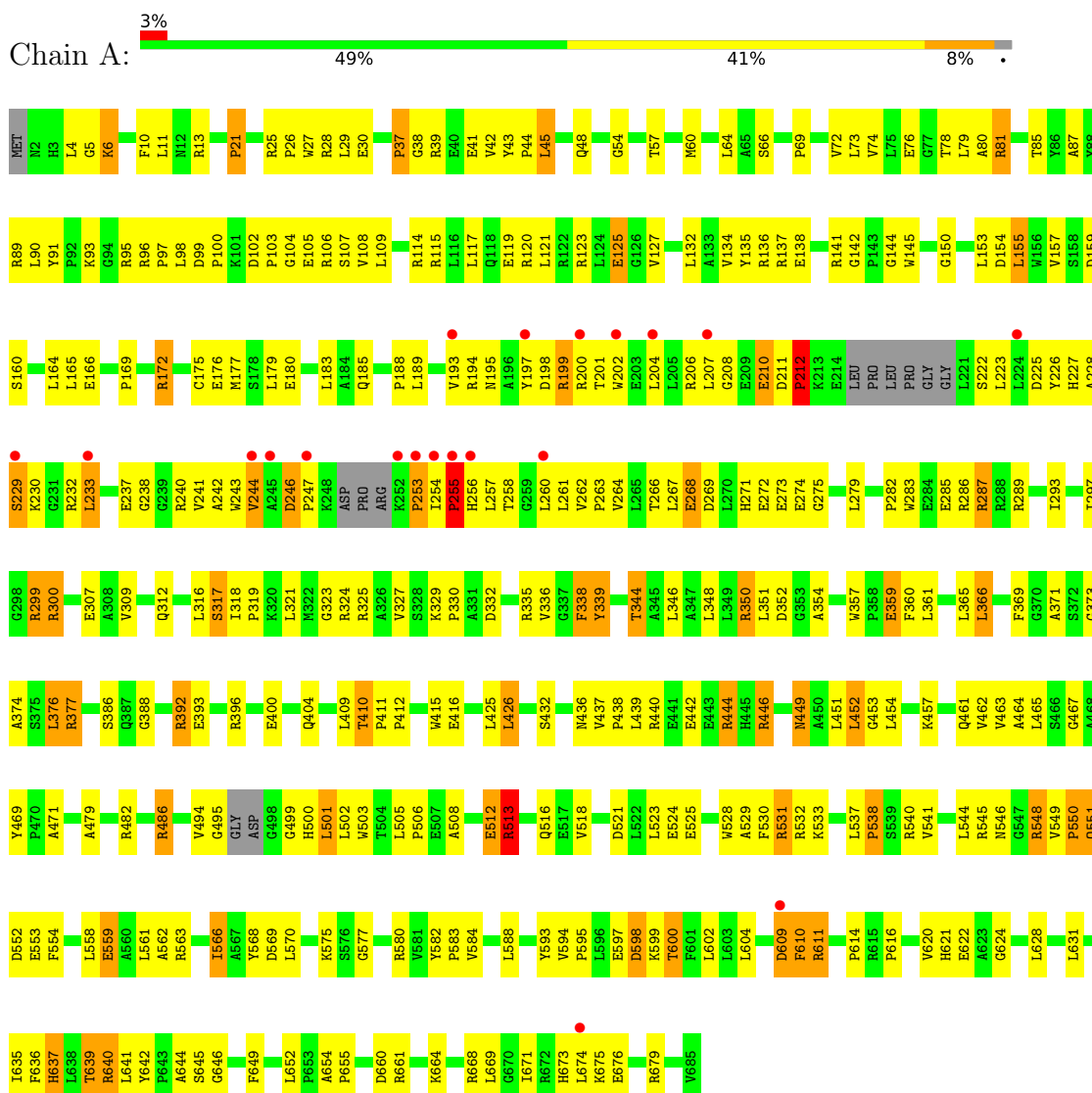
- Molecule 5 is water.

Mol	Chain	Residues	Atoms	ZeroOcc	AltConf
5	A	84	Total O 84 84	0	0
5	X	4	Total O 4 4	0	0
5	Y	5	Total O 5 5	0	0

3 Residue-property plots [i](#)

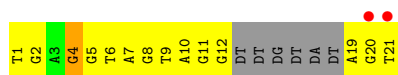
These plots are drawn for all protein, RNA, DNA and oligosaccharide chains in the entry. The first graphic for a chain summarises the proportions of the various outlier classes displayed in the second graphic. The second graphic shows the sequence view annotated by issues in geometry and electron density. Residues are color-coded according to the number of geometric quality criteria for which they contain at least one outlier: green = 0, yellow = 1, orange = 2 and red = 3 or more. A red dot above a residue indicates a poor fit to the electron density ($RSRZ > 2$). Stretches of 2 or more consecutive residues without any outlier are shown as a green connector. Residues present in the sample, but not in the model, are shown in grey.

- Molecule 1: argonaute



- Molecule 2: 5'-D(P*TP*GP*AP*GP*GP*TP*AP*GP*TP*AP*GP*GP*TP*TP*GP*TP*AP*T*AP*GP*T)-3'

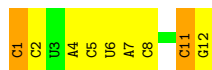




- Molecule 3: 5'-R(P*CP*CP*UP*AP*CP*UP*AP*CP*CP*UP*CP*G)-3'

Chain Y:
25% 58% 17%

Chain Y conservation bar chart showing percentages: 25% (green), 58% (yellow), 17% (orange).



4 Data and refinement statistics

Property	Value	Source
Space group	C 1 2 1	Depositor
Cell constants a, b, c, α , β , γ	122.93Å 118.53Å 59.53Å 90.00° 114.91° 90.00°	Depositor
Resolution (Å)	30.00 – 2.60 40.61 – 2.61	Depositor EDS
% Data completeness (in resolution range)	95.0 (30.00-2.60) 95.7 (40.61-2.61)	Depositor EDS
R_{merge}	0.07	Depositor
R_{sym}	(Not available)	Depositor
$\langle I/\sigma(I) \rangle$ ¹	3.37 (at 2.61Å)	Xtrriage
Refinement program	CNS	Depositor
R, R_{free}	0.220 , 0.258 0.238 , 0.268	Depositor DCC
R_{free} test set	1610 reflections (6.83%)	wwPDB-VP
Wilson B-factor (Å ²)	52.4	Xtrriage
Anisotropy	0.232	Xtrriage
Bulk solvent k_{sol} (e/Å ³), B_{sol} (Å ²)	0.31 , 45.3	EDS
L-test for twinning ²	$\langle L \rangle = 0.49$, $\langle L^2 \rangle = 0.32$	Xtrriage
Estimated twinning fraction	No twinning to report.	Xtrriage
F_o, F_c correlation	0.94	EDS
Total number of atoms	5767	wwPDB-VP
Average B, all atoms (Å ²)	61.0	wwPDB-VP

Xtrriage's analysis on translational NCS is as follows: *The largest off-origin peak in the Patterson function is 5.01% of the height of the origin peak. No significant pseudotranslation is detected.*

¹Intensities estimated from amplitudes.

²Theoretical values of $\langle |L| \rangle$, $\langle L^2 \rangle$ for acentric reflections are 0.5, 0.333 respectively for untwinned datasets, and 0.375, 0.2 for perfectly twinned datasets.

5 Model quality i

5.1 Standard geometry i

Bond lengths and bond angles in the following residue types are not validated in this section: MG

The Z score for a bond length (or angle) is the number of standard deviations the observed value is removed from the expected value. A bond length (or angle) with $|Z| > 5$ is considered an outlier worth inspection. RMSZ is the root-mean-square of all Z scores of the bond lengths (or angles).

Mol	Chain	Bond lengths		Bond angles	
		RMSZ	# Z >5	RMSZ	# Z >5
1	A	0.48	1/5265 (0.0%)	0.82	10/7159 (0.1%)
2	X	0.90	2/335 (0.6%)	0.98	2/515 (0.4%)
3	Y	0.67	1/252 (0.4%)	0.73	0/387
All	All	0.52	4/5852 (0.1%)	0.82	12/8061 (0.1%)

Chiral center outliers are detected by calculating the chiral volume of a chiral center and verifying if the center is modelled as a planar moiety or with the opposite hand. A planarity outlier is detected by checking planarity of atoms in a peptide group, atoms in a mainchain group or atoms of a sidechain that are expected to be planar.

Mol	Chain	#Chirality outliers	#Planarity outliers
2	X	0	1

All (4) bond length outliers are listed below:

Mol	Chain	Res	Type	Atoms	Z	Observed(Å)	Ideal(Å)
2	X	1	DT	OP3-P	-10.21	1.48	1.61
2	X	19	DA	O3'-P	-7.02	1.52	1.61
3	Y	1	C	OP3-P	-6.36	1.53	1.61
1	A	513	ARG	C-O	-5.10	1.13	1.23

All (12) bond angle outliers are listed below:

Mol	Chain	Res	Type	Atoms	Z	Observed(°)	Ideal(°)
2	X	1	DT	OP1-P-OP2	-6.57	109.75	119.60
1	A	246	ASP	O-C-N	-6.53	108.70	121.10
1	A	253	PRO	N-CA-CB	6.10	110.62	103.30
1	A	189	LEU	N-CA-C	5.98	127.14	111.00
1	A	273	GLU	C-N-CA	5.73	136.02	121.70
1	A	274	GLU	N-CA-C	-5.64	95.78	111.00

Continued on next page...

Continued from previous page...

Mol	Chain	Res	Type	Atoms	Z	Observed(°)	Ideal(°)
1	A	275	GLY	N-CA-C	5.51	126.88	113.10
1	A	506	PRO	N-CA-CB	5.43	109.81	103.30
1	A	273	GLU	N-CA-C	5.10	124.76	111.00
1	A	513	ARG	O-C-N	-5.08	114.56	122.70
1	A	669	LEU	N-CA-C	-5.08	97.27	111.00
2	X	1	DT	P-O3'-C3'	5.05	125.76	119.70

There are no chirality outliers.

All (1) planarity outliers are listed below:

Mol	Chain	Res	Type	Group
2	X	4	DG	Sidechain

5.2 Too-close contacts [i](#)

In the following table, the Non-H and H(model) columns list the number of non-hydrogen atoms and hydrogen atoms in the chain respectively. The H(added) column lists the number of hydrogen atoms added and optimized by MolProbity. The Clashes column lists the number of clashes within the asymmetric unit, whereas Symm-Clashes lists symmetry-related clashes.

Mol	Chain	Non-H	H(model)	H(added)	Clashes	Symm-Clashes
1	A	5145	0	5122	347	0
2	X	299	0	160	28	0
3	Y	229	0	118	11	0
4	X	1	0	0	0	0
5	A	84	0	0	9	0
5	X	4	0	0	0	0
5	Y	5	0	0	0	0
All	All	5767	0	5400	372	0

The all-atom clashscore is defined as the number of clashes found per 1000 atoms (including hydrogen atoms). The all-atom clashscore for this structure is 34.

All (372) close contacts within the same asymmetric unit are listed below, sorted by their clash magnitude.

Atom-1	Atom-2	Interatomic distance (Å)	Clash overlap (Å)
1:A:210:GLU:HG3	1:A:243:TRP:HH2	1.09	1.08
1:A:210:GLU:HG3	1:A:243:TRP:CH2	1.90	1.07
1:A:153:LEU:HD13	1:A:297:ILE:HD12	1.37	1.01

Continued on next page...

Continued from previous page...

Atom-1	Atom-2	Interatomic distance (Å)	Clash overlap (Å)
1:A:671:ILE:HG21	1:A:674:LEU:HG	1.43	1.00
1:A:671:ILE:CG2	1:A:674:LEU:HG	1.90	1.00
2:X:21:DT:H2'	2:X:21:DT:O2	1.63	0.99
1:A:210:GLU:CG	1:A:243:TRP:HH2	1.76	0.99
1:A:195:ASN:HB2	1:A:198:ASP:OD1	1.62	0.98
1:A:501:LEU:H	1:A:501:LEU:HD12	1.29	0.96
1:A:377:ARG:HG2	1:A:377:ARG:HH21	1.29	0.95
1:A:208:GLY:HA3	1:A:243:TRP:HZ3	1.32	0.94
1:A:344:THR:HB	1:A:404:GLN:HE22	1.32	0.93
1:A:207:LEU:HD11	1:A:240:ARG:HB2	1.48	0.93
1:A:546:ASN:ND2	1:A:548:ARG:HB2	1.85	0.90
1:A:195:ASN:OD1	1:A:202:TRP:NE1	2.06	0.89
1:A:193:VAL:HG11	1:A:204:LEU:HD13	1.54	0.89
2:X:6:DT:H2''	2:X:7:DA:H5''	1.55	0.89
1:A:233:LEU:HD23	1:A:260:LEU:HD11	1.54	0.89
1:A:208:GLY:HA3	1:A:243:TRP:CZ3	2.08	0.88
1:A:238:GLY:HA3	1:A:257:LEU:HD13	1.56	0.88
1:A:551:GLN:NE2	1:A:622:GLU:HB3	1.90	0.87
1:A:544:LEU:HD21	1:A:635:ILE:HD11	1.55	0.87
1:A:316:LEU:HD11	1:A:593:TYR:HB3	1.57	0.87
1:A:6:LYS:HD2	1:A:312:GLN:HE21	1.37	0.85
1:A:531:ARG:HD2	1:A:537:LEU:HD13	1.58	0.85
1:A:462:VAL:HG12	1:A:463:VAL:HG13	1.60	0.84
1:A:6:LYS:HD2	1:A:312:GLN:NE2	1.93	0.84
1:A:299:ARG:HG2	1:A:299:ARG:HH11	1.43	0.84
1:A:207:LEU:HD11	1:A:240:ARG:CB	2.06	0.84
1:A:324:ARG:NH1	1:A:371:ALA:O	2.11	0.83
1:A:193:VAL:HG21	1:A:261:LEU:HB3	1.60	0.82
1:A:204:LEU:HA	1:A:244:VAL:HA	1.62	0.82
1:A:495:GLY:HA3	1:A:499:GLY:HA2	1.62	0.81
2:X:10:DA:H2'''	2:X:11:DG:H5'	1.61	0.81
1:A:609:ASP:C	1:A:610:PHE:HD2	1.84	0.80
1:A:319:PRO:HG2	1:A:640:ARG:HD3	1.65	0.79
1:A:120:ARG:NH1	1:A:123:ARG:HG3	1.98	0.79
1:A:268:GLU:O	1:A:271:HIS:N	2.12	0.79
1:A:449:ASN:ND2	1:A:645:SER:O	2.12	0.78
1:A:207:LEU:HD21	1:A:240:ARG:HD3	1.65	0.78
1:A:256:HIS:HD2	1:A:257:LEU:H	1.30	0.78
1:A:393:GLU:CD	1:A:396:ARG:HH12	1.87	0.78
1:A:316:LEU:HD11	1:A:593:TYR:CB	2.14	0.78
1:A:541:VAL:HG22	1:A:566:ILE:HD11	1.64	0.77

Continued on next page...

Continued from previous page...

Atom-1	Atom-2	Interatomic distance (Å)	Clash overlap (Å)
1:A:513:ARG:HB3	5:A:713:HOH:O	1.85	0.77
1:A:120:ARG:HH21	1:A:300:ARG:HB2	1.50	0.76
1:A:344:THR:CB	1:A:404:GLN:HE22	1.98	0.76
1:A:125:GLU:CD	1:A:125:GLU:H	1.89	0.75
1:A:639:THR:HG22	1:A:640:ARG:HE	1.49	0.75
1:A:350:ARG:NH2	1:A:354:ALA:HB3	2.02	0.75
1:A:377:ARG:HG2	1:A:377:ARG:NH2	1.99	0.75
1:A:57:THR:HG22	1:A:66:SER:OG	1.87	0.74
1:A:377:ARG:HH21	1:A:377:ARG:CG	2.00	0.74
1:A:330:PRO:HB2	1:A:646:GLY:HA2	1.68	0.74
1:A:495:GLY:CA	1:A:499:GLY:HA2	2.17	0.74
1:A:222:SER:HB3	1:A:225:ASP:HB2	1.68	0.73
1:A:102:ASP:OD2	1:A:105:GLU:HG3	1.88	0.73
1:A:327:VAL:CG2	1:A:332:ASP:HB2	2.19	0.72
1:A:393:GLU:CD	1:A:396:ARG:NH1	2.43	0.72
1:A:530:PHE:CD2	1:A:538:PRO:HD3	2.24	0.72
1:A:227:HIS:NE2	2:X:21:DT:O3'	2.23	0.71
1:A:350:ARG:CZ	1:A:354:ALA:HB3	2.21	0.71
1:A:289:ARG:O	1:A:293:ILE:HD13	1.90	0.70
1:A:671:ILE:HG21	1:A:674:LEU:CG	2.22	0.70
1:A:546:ASN:HD22	1:A:548:ARG:HB2	1.55	0.70
1:A:254:ILE:HG23	2:X:21:DT:O4'	1.92	0.70
1:A:256:HIS:CD2	1:A:257:LEU:H	2.09	0.70
1:A:604:LEU:HD13	1:A:616:PRO:HG3	1.72	0.69
1:A:609:ASP:OD1	1:A:611:ARG:NE	2.24	0.69
2:X:11:DG:H2''	2:X:12:DG:OP2	1.92	0.69
1:A:153:LEU:CD1	1:A:297:ILE:HD12	2.21	0.69
1:A:671:ILE:HD13	1:A:674:LEU:HD11	1.72	0.69
1:A:120:ARG:HD2	1:A:123:ARG:HH11	1.55	0.68
1:A:329:LYS:HE3	1:A:332:ASP:OD2	1.94	0.68
1:A:195:ASN:ND2	1:A:197:TYR:CZ	2.60	0.68
1:A:636:PHE:O	1:A:639:THR:HB	1.93	0.67
1:A:193:VAL:CG2	1:A:261:LEU:HB3	2.24	0.67
1:A:664:LYS:HE2	1:A:668:ARG:NH1	2.10	0.66
1:A:200:ARG:NH1	2:X:20:DG:H4'	2.10	0.66
1:A:208:GLY:CA	1:A:243:TRP:HZ3	2.08	0.66
1:A:639:THR:CG2	1:A:640:ARG:HE	2.09	0.66
1:A:366:LEU:HD12	1:A:376:LEU:HD21	1.78	0.65
1:A:479:ALA:O	1:A:482:ARG:NH2	2.29	0.65
1:A:204:LEU:HD12	1:A:244:VAL:CB	2.26	0.65
1:A:193:VAL:CG1	1:A:204:LEU:HD13	2.24	0.65

Continued on next page...

Continued from previous page...

Atom-1	Atom-2	Interatomic distance (Å)	Clash overlap (Å)
1:A:593:TYR:CZ	1:A:595:PRO:HG3	2.32	0.65
1:A:437:VAL:O	1:A:439:LEU:N	2.29	0.65
1:A:141:ARG:HB2	1:A:141:ARG:HH11	1.62	0.64
1:A:469:TYR:OH	1:A:637:HIS:HD2	1.79	0.64
1:A:446:ARG:HG2	2:X:2:DG:C8	2.32	0.64
1:A:471:ALA:HA	1:A:540:ARG:HG2	1.80	0.64
1:A:207:LEU:HD21	1:A:240:ARG:CD	2.27	0.64
1:A:96:ARG:NH1	5:A:732:HOH:O	2.31	0.63
2:X:10:DA:C2'	2:X:11:DG:H5'	2.27	0.63
1:A:639:THR:HG22	1:A:640:ARG:NE	2.13	0.63
1:A:610:PHE:HD2	1:A:610:PHE:N	1.95	0.63
1:A:120:ARG:HH11	1:A:123:ARG:CG	2.12	0.63
1:A:610:PHE:N	1:A:610:PHE:CD2	2.66	0.62
1:A:10:PHE:CE2	1:A:584:VAL:HG22	2.34	0.62
3:Y:1:C:OP2	3:Y:1:C:H3'	2.00	0.62
1:A:180:GLU:HG2	1:A:258:THR:OG1	1.99	0.62
1:A:207:LEU:HD12	1:A:241:VAL:O	1.99	0.62
1:A:285:GLU:OE1	1:A:289:ARG:HD2	1.99	0.62
1:A:440:ARG:HB3	1:A:442:GLU:OE2	1.99	0.62
1:A:437:VAL:CG1	1:A:438:PRO:HD3	2.30	0.62
1:A:609:ASP:C	1:A:610:PHE:CD2	2.70	0.61
1:A:135:TYR:CE2	1:A:172:ARG:HB2	2.36	0.61
1:A:415:TRP:HZ2	1:A:668:ARG:HG2	1.64	0.61
1:A:494:VAL:HG22	1:A:501:LEU:HG	1.83	0.61
1:A:325:ARG:HB2	1:A:336:VAL:HG13	1.83	0.61
1:A:531:ARG:CD	1:A:537:LEU:HD13	2.31	0.61
1:A:545:ARG:NH1	1:A:622:GLU:OE1	2.34	0.60
1:A:254:ILE:HG22	1:A:254:ILE:O	2.01	0.60
1:A:318:ILE:HD12	1:A:318:ILE:H	1.66	0.60
1:A:155:LEU:HD23	1:A:164:LEU:O	2.00	0.60
1:A:230:LYS:HD3	1:A:232:ARG:NE	2.17	0.59
1:A:664:LYS:HE2	1:A:668:ARG:HH11	1.67	0.59
2:X:5:DG:H2'	2:X:6:DT:H72	1.85	0.59
1:A:204:LEU:HD12	1:A:244:VAL:HA	1.83	0.59
1:A:545:ARG:NH2	1:A:549:VAL:O	2.36	0.59
1:A:415:TRP:CZ2	1:A:668:ARG:HG2	2.38	0.59
1:A:193:VAL:HG22	1:A:194:ARG:N	2.17	0.58
1:A:144:GLY:HA3	1:A:177:MET:HE1	1.84	0.58
1:A:332:ASP:OD1	1:A:335:ARG:NH1	2.36	0.58
1:A:416:GLU:CD	1:A:416:GLU:H	2.06	0.58
1:A:141:ARG:HG3	1:A:142:GLY:H	1.67	0.58

Continued on next page...

Continued from previous page...

Atom-1	Atom-2	Interatomic distance (Å)	Clash overlap (Å)
3:Y:11:C:O2'	3:Y:12:G:OP2	2.18	0.58
1:A:228:ALA:C	1:A:230:LYS:H	2.07	0.58
1:A:530:PHE:HD2	1:A:538:PRO:HD3	1.67	0.58
1:A:79:LEU:N	1:A:79:LEU:HD23	2.19	0.57
1:A:141:ARG:CG	1:A:142:GLY:N	2.67	0.57
1:A:227:HIS:CE1	2:X:21:DT:HO3'	2.22	0.57
3:Y:4:A:H2'	3:Y:5:C:O4'	2.04	0.57
1:A:69:PRO:HG2	1:A:72:VAL:HG13	1.87	0.57
1:A:223:LEU:HD13	1:A:223:LEU:C	2.25	0.57
1:A:317:SER:O	1:A:637:HIS:HE1	1.88	0.57
1:A:175:CYS:SG	1:A:263:PRO:HG2	2.44	0.56
1:A:204:LEU:HD12	1:A:244:VAL:CA	2.35	0.56
1:A:338:PHE:HB3	1:A:462:VAL:HA	1.88	0.56
1:A:155:LEU:HA	1:A:164:LEU:O	2.05	0.56
1:A:195:ASN:CB	1:A:198:ASP:OD1	2.45	0.56
2:X:7:DA:H2''	2:X:8:DG:C8	2.40	0.56
1:A:26:PRO:HG3	1:A:98:LEU:HD22	1.88	0.56
1:A:352:ASP:OD2	1:A:437:VAL:HG21	2.05	0.56
1:A:207:LEU:HD11	1:A:240:ARG:HB3	1.88	0.56
1:A:351:LEU:HB2	1:A:410:THR:HB	1.87	0.56
1:A:549:VAL:O	1:A:550:PRO:O	2.23	0.56
3:Y:11:C:O2'	3:Y:12:G:P	2.63	0.56
1:A:120:ARG:NH1	1:A:123:ARG:CG	2.68	0.56
1:A:267:LEU:HD11	2:X:8:DG:H1'	1.87	0.56
1:A:327:VAL:HG22	1:A:332:ASP:HB2	1.88	0.55
1:A:410:THR:O	1:A:436:ASN:HA	2.06	0.55
2:X:7:DA:H2''	2:X:8:DG:H8	1.71	0.55
1:A:597:GLU:H	1:A:597:GLU:CD	2.09	0.55
2:X:5:DG:H2'	2:X:6:DT:C7	2.36	0.55
1:A:344:THR:O	1:A:376:LEU:HA	2.07	0.55
2:X:21:DT:O2	2:X:21:DT:C2'	2.45	0.55
1:A:344:THR:HG23	1:A:369:PHE:CE2	2.41	0.55
1:A:210:GLU:CD	1:A:243:TRP:HH2	2.09	0.55
1:A:210:GLU:CG	1:A:243:TRP:CH2	2.67	0.54
1:A:120:ARG:NH2	1:A:300:ARG:HB2	2.20	0.54
1:A:125:GLU:CD	1:A:125:GLU:N	2.61	0.54
1:A:392:ARG:HB3	1:A:392:ARG:NH2	2.22	0.54
1:A:551:GLN:HE22	1:A:622:GLU:HB3	1.68	0.54
1:A:195:ASN:ND2	1:A:197:TYR:OH	2.40	0.54
1:A:268:GLU:O	1:A:269:ASP:C	2.44	0.54
1:A:79:LEU:HD23	1:A:79:LEU:H	1.72	0.53

Continued on next page...

Continued from previous page...

Atom-1	Atom-2	Interatomic distance (Å)	Clash overlap (Å)
1:A:233:LEU:CD2	1:A:260:LEU:HD11	2.33	0.53
3:Y:11:C:HO2'	3:Y:12:G:P	2.31	0.53
1:A:144:GLY:O	1:A:176:GLU:N	2.39	0.53
1:A:442:GLU:H	1:A:442:GLU:CD	2.12	0.53
1:A:253:PRO:O	1:A:255:PRO:HD3	2.09	0.53
1:A:194:ARG:NH2	1:A:262:VAL:HG11	2.23	0.53
1:A:299:ARG:HG2	1:A:299:ARG:NH1	2.19	0.53
1:A:598:ASP:HA	5:A:740:HOH:O	2.08	0.53
1:A:226:TYR:CZ	1:A:230:LYS:HE3	2.43	0.53
1:A:501:LEU:HD12	1:A:501:LEU:N	2.12	0.53
1:A:671:ILE:HG23	1:A:674:LEU:HG	1.83	0.53
1:A:344:THR:CB	1:A:404:GLN:NE2	2.72	0.53
1:A:453:GLY:O	1:A:457:LYS:HG3	2.09	0.53
1:A:30:GLU:O	1:A:90:LEU:HA	2.09	0.53
1:A:141:ARG:HB2	1:A:141:ARG:NH1	2.24	0.52
1:A:266:THR:HA	2:X:9:DT:H4'	1.91	0.52
1:A:501:LEU:H	1:A:501:LEU:CD1	2.06	0.52
1:A:283:TRP:CZ3	1:A:287:ARG:NH1	2.76	0.52
1:A:286:ARG:HG3	1:A:582:TYR:OH	2.10	0.52
1:A:115:ARG:O	1:A:119:GLU:HG2	2.10	0.52
1:A:144:GLY:O	1:A:176:GLU:HB2	2.09	0.52
1:A:393:GLU:OE2	1:A:396:ARG:NH1	2.40	0.52
1:A:267:LEU:N	1:A:267:LEU:HD12	2.25	0.52
1:A:243:TRP:HE1	1:A:255:PRO:HG3	1.75	0.52
1:A:545:ARG:NH2	1:A:550:PRO:O	2.42	0.52
1:A:104:GLY:O	1:A:107:SER:HB3	2.09	0.52
1:A:207:LEU:HD21	1:A:240:ARG:NE	2.25	0.51
1:A:142:GLY:HA3	1:A:145:TRP:CE2	2.45	0.51
1:A:207:LEU:HD13	1:A:258:THR:HG21	1.93	0.51
1:A:11:LEU:C	1:A:13:ARG:H	2.14	0.51
1:A:199:ARG:NH2	5:A:762:HOH:O	2.44	0.51
1:A:529:ALA:HB2	1:A:679:ARG:NH2	2.26	0.51
1:A:179:LEU:O	1:A:183:LEU:HG	2.10	0.51
1:A:4:LEU:N	1:A:4:LEU:HD12	2.25	0.51
1:A:99:ASP:N	1:A:105:GLU:OE1	2.43	0.51
1:A:115:ARG:NH1	1:A:119:GLU:OE2	2.43	0.51
1:A:437:VAL:HG13	1:A:438:PRO:HD3	1.91	0.51
1:A:621:HIS:CE1	1:A:631:LEU:HD11	2.46	0.51
1:A:199:ARG:HH11	1:A:199:ARG:CG	2.23	0.51
1:A:54:GLY:O	1:A:73:LEU:HD22	2.11	0.50
1:A:540:ARG:HA	1:A:566:ILE:HD12	1.94	0.50

Continued on next page...

Continued from previous page...

Atom-1	Atom-2	Interatomic distance (Å)	Clash overlap (Å)
1:A:78:THR:HG22	1:A:87:ALA:HA	1.93	0.50
1:A:120:ARG:HH12	1:A:123:ARG:HG3	1.74	0.50
1:A:559:GLU:O	1:A:562:ALA:HB3	2.12	0.50
1:A:242:ALA:N	1:A:256:HIS:O	2.36	0.50
1:A:299:ARG:HH11	1:A:299:ARG:CG	2.17	0.50
1:A:386:SER:C	1:A:388:GLY:H	2.15	0.50
1:A:141:ARG:O	1:A:145:TRP:CH2	2.65	0.50
1:A:210:GLU:CD	1:A:243:TRP:CH2	2.83	0.50
1:A:329:LYS:HE3	1:A:332:ASP:CG	2.32	0.50
1:A:80:ALA:HA	1:A:85:THR:HA	1.94	0.50
1:A:654:ALA:HB3	1:A:655:PRO:HD3	1.94	0.49
3:Y:7:A:O2'	3:Y:8:C:H5'	2.12	0.49
1:A:193:VAL:HA	1:A:264:VAL:HG23	1.93	0.49
1:A:237:GLU:O	1:A:238:GLY:C	2.50	0.49
1:A:396:ARG:NH1	1:A:396:ARG:HB3	2.28	0.49
1:A:551:GLN:C	1:A:553:GLU:N	2.66	0.49
1:A:594:VAL:HB	1:A:602:LEU:HB2	1.94	0.49
3:Y:1:C:H2'	3:Y:2:C:C6	2.48	0.49
1:A:426:LEU:HG	1:A:674:LEU:CD2	2.43	0.49
1:A:359:GLU:OE2	1:A:360:PHE:N	2.46	0.49
1:A:425:LEU:HD13	1:A:432:SER:HB3	1.94	0.49
1:A:411:PRO:O	1:A:412:PRO:C	2.51	0.48
1:A:80:ALA:HB2	1:A:85:THR:HG22	1.96	0.48
1:A:85:THR:HG23	5:A:719:HOH:O	2.13	0.48
1:A:106:ARG:NH1	5:A:733:HOH:O	2.45	0.48
1:A:461:GLN:OE1	1:A:464:ALA:HB2	2.14	0.48
1:A:199:ARG:CG	1:A:199:ARG:NH1	2.77	0.48
1:A:437:VAL:HG12	1:A:438:PRO:HD3	1.94	0.48
1:A:569:ASP:OD1	1:A:624:GLY:HA3	2.14	0.48
2:X:10:DA:H1'	2:X:11:DG:H5'	1.94	0.48
1:A:282:PRO:HB3	1:A:610:PHE:O	2.14	0.48
1:A:350:ARG:NH2	1:A:352:ASP:OD1	2.47	0.48
1:A:194:ARG:NH2	5:A:734:HOH:O	2.47	0.47
1:A:664:LYS:CE	1:A:668:ARG:NH1	2.75	0.47
1:A:194:ARG:O	1:A:262:VAL:HG12	2.14	0.47
1:A:366:LEU:CD1	1:A:376:LEU:HD21	2.43	0.47
1:A:74:VAL:HG12	1:A:76:GLU:O	2.14	0.47
1:A:335:ARG:NH2	1:A:444:ARG:NH1	2.62	0.47
1:A:392:ARG:HB3	1:A:392:ARG:HH21	1.77	0.47
1:A:561:LEU:HD22	1:A:566:ILE:HG12	1.96	0.47
1:A:48:GLN:HE22	1:A:81:ARG:HG3	1.79	0.47

Continued on next page...

Continued from previous page...

Atom-1	Atom-2	Interatomic distance (Å)	Clash overlap (Å)
1:A:193:VAL:HG22	1:A:194:ARG:H	1.78	0.47
1:A:243:TRP:NE1	1:A:255:PRO:HG3	2.28	0.47
1:A:97:PRO:O	1:A:98:LEU:HD12	2.14	0.47
1:A:103:PRO:HA	1:A:106:ARG:HE	1.79	0.47
1:A:323:GLY:O	1:A:339:TYR:HA	2.15	0.47
1:A:628:LEU:HD23	1:A:631:LEU:HD12	1.96	0.47
3:Y:4:A:H2'	3:Y:5:C:C6	2.49	0.47
1:A:323:GLY:O	1:A:339:TYR:HD1	1.98	0.47
1:A:503:TRP:O	1:A:679:ARG:HD2	2.14	0.47
1:A:316:LEU:HD12	1:A:316:LEU:N	2.29	0.47
1:A:207:LEU:HD13	1:A:258:THR:CG2	2.45	0.47
1:A:318:ILE:HD12	1:A:318:ILE:N	2.30	0.47
1:A:268:GLU:O	1:A:271:HIS:CB	2.64	0.46
1:A:486:ARG:NH1	1:A:512:GLU:HB3	2.30	0.46
1:A:575:LYS:CE	1:A:652:LEU:HD11	2.45	0.46
1:A:120:ARG:HH21	1:A:300:ARG:CB	2.26	0.46
1:A:109:LEU:HB3	1:A:157:VAL:HG21	1.98	0.46
1:A:41:GLU:O	1:A:45:LEU:HB2	2.15	0.46
1:A:154:ASP:HB3	1:A:166:GLU:HB3	1.97	0.46
1:A:327:VAL:HG23	1:A:332:ASP:HB2	1.97	0.46
1:A:530:PHE:CE2	1:A:538:PRO:HD3	2.51	0.46
3:Y:1:C:H2'	3:Y:2:C:H6	1.80	0.46
1:A:141:ARG:HG3	1:A:142:GLY:N	2.30	0.45
1:A:316:LEU:HD11	1:A:593:TYR:HB2	1.94	0.45
1:A:523:LEU:HD21	1:A:561:LEU:HD11	1.97	0.45
1:A:197:TYR:CE2	1:A:232:ARG:HD3	2.51	0.45
1:A:230:LYS:HD3	1:A:232:ARG:CZ	2.47	0.45
1:A:256:HIS:CD2	1:A:257:LEU:N	2.82	0.45
1:A:348:LEU:HB2	1:A:357:TRP:CE2	2.52	0.45
1:A:193:VAL:HG23	1:A:262:VAL:O	2.16	0.45
1:A:103:PRO:HA	1:A:106:ARG:HH21	1.82	0.45
1:A:223:LEU:HD11	1:A:257:LEU:HG	1.97	0.45
1:A:283:TRP:CZ3	1:A:583:PRO:HD2	2.52	0.45
1:A:551:GLN:C	1:A:553:GLU:H	2.20	0.45
1:A:559:GLU:OE2	1:A:563:ARG:NH2	2.50	0.45
1:A:575:LYS:HE3	1:A:652:LEU:HD11	1.99	0.45
1:A:10:PHE:CZ	1:A:584:VAL:HG22	2.52	0.45
1:A:267:LEU:HD11	2:X:8:DG:C1'	2.46	0.45
1:A:465:LEU:HG	1:A:641:LEU:HD11	1.99	0.45
1:A:518:VAL:O	1:A:521:ASP:HB3	2.17	0.45
1:A:127:VAL:HG11	1:A:134:VAL:HG12	1.99	0.45

Continued on next page...

Continued from previous page...

Atom-1	Atom-2	Interatomic distance (Å)	Clash overlap (Å)
1:A:199:ARG:NH1	1:A:199:ARG:HG2	2.32	0.45
1:A:279:LEU:HD13	2:X:8:DG:C5'	2.47	0.45
1:A:673:HIS:O	1:A:675:LYS:N	2.49	0.45
1:A:69:PRO:O	1:A:72:VAL:HG22	2.17	0.44
1:A:227:HIS:CE1	2:X:21:DT:O3'	2.69	0.44
1:A:283:TRP:CD1	1:A:588:LEU:HD12	2.52	0.44
1:A:531:ARG:HD3	5:A:716:HOH:O	2.18	0.44
1:A:671:ILE:HG21	1:A:674:LEU:CD1	2.47	0.44
1:A:138:GLU:OE2	1:A:141:ARG:NH1	2.50	0.44
1:A:541:VAL:HG13	1:A:566:ILE:CD1	2.48	0.44
1:A:505:LEU:HD23	1:A:505:LEU:HA	1.76	0.44
1:A:102:ASP:O	1:A:103:PRO:C	2.55	0.44
1:A:138:GLU:CD	1:A:141:ARG:HH12	2.21	0.44
1:A:541:VAL:HG13	1:A:566:ILE:HD11	1.99	0.44
1:A:554:PHE:O	1:A:558:LEU:HG	2.17	0.44
1:A:598:ASP:CG	1:A:599:LYS:H	2.21	0.44
1:A:566:ILE:O	1:A:566:ILE:HG13	2.18	0.44
2:X:10:DA:H1'	2:X:11:DG:C5'	2.48	0.43
1:A:348:LEU:HD11	1:A:409:LEU:HG	2.00	0.43
1:A:28:ARG:HH21	1:A:93:LYS:CB	2.32	0.43
1:A:96:ARG:HG2	1:A:98:LEU:CD1	2.49	0.43
1:A:103:PRO:HB3	1:A:106:ARG:HH21	1.83	0.43
1:A:117:LEU:O	1:A:121:LEU:HG	2.18	0.43
1:A:141:ARG:CG	1:A:142:GLY:H	2.29	0.43
1:A:211:ASP:O	1:A:212:PRO:C	2.56	0.43
1:A:253:PRO:C	1:A:255:PRO:HD3	2.38	0.43
1:A:449:ASN:HD22	1:A:449:ASN:HA	1.42	0.43
1:A:136:ARG:HH22	1:A:137:ARG:HH21	1.67	0.43
1:A:240:ARG:O	1:A:258:THR:HG23	2.18	0.43
1:A:452:LEU:HD12	1:A:452:LEU:HA	1.91	0.43
1:A:99:ASP:HA	1:A:100:PRO:HD2	1.89	0.43
1:A:442:GLU:C	1:A:444:ARG:H	2.20	0.43
1:A:544:LEU:CD2	1:A:635:ILE:HD11	2.38	0.43
1:A:577:GLY:N	3:Y:1:C:OP1	2.52	0.43
2:X:4:DG:H2''	2:X:5:DG:H8	1.83	0.43
1:A:42:VAL:HG13	1:A:43:TYR:N	2.34	0.43
1:A:193:VAL:CG2	1:A:194:ARG:N	2.82	0.43
1:A:200:ARG:HH11	2:X:20:DG:H4'	1.81	0.43
1:A:467:GLY:HA2	5:A:706:HOH:O	2.19	0.42
1:A:321:LEU:HD12	1:A:321:LEU:HA	1.91	0.42
1:A:271:HIS:O	1:A:272:GLU:C	2.57	0.42

Continued on next page...

Continued from previous page...

Atom-1	Atom-2	Interatomic distance (Å)	Clash overlap (Å)
1:A:37:PRO:HG2	1:A:38:GLY:H	1.83	0.42
1:A:193:VAL:HG23	1:A:262:VAL:C	2.40	0.42
1:A:208:GLY:C	1:A:210:GLU:H	2.23	0.42
1:A:226:TYR:HE2	2:X:21:DT:H3'	1.84	0.42
1:A:262:VAL:O	1:A:262:VAL:HG13	2.18	0.42
1:A:60:MET:HG3	1:A:108:VAL:HG21	2.02	0.42
1:A:318:ILE:H	1:A:318:ILE:CD1	2.32	0.42
1:A:344:THR:HG23	1:A:369:PHE:HE2	1.82	0.42
1:A:533:LYS:HD3	1:A:533:LYS:HA	1.91	0.42
1:A:102:ASP:HA	1:A:103:PRO:HD2	1.78	0.42
1:A:150:GLY:O	1:A:169:PRO:HA	2.19	0.42
1:A:211:ASP:HA	1:A:212:PRO:HD2	1.78	0.42
1:A:604:LEU:HD12	1:A:604:LEU:HA	1.85	0.42
1:A:639:THR:HG22	1:A:640:ARG:CD	2.50	0.42
1:A:396:ARG:HB3	1:A:396:ARG:HH11	1.85	0.42
2:X:10:DA:C6	2:X:11:DG:C6	3.08	0.42
1:A:21:PRO:O	1:A:25:ARG:HG3	2.20	0.41
1:A:229:SER:C	1:A:230:LYS:HG3	2.39	0.41
1:A:42:VAL:HG13	1:A:43:TYR:H	1.85	0.41
1:A:144:GLY:HA3	1:A:177:MET:CE	2.49	0.41
1:A:545:ARG:HD2	1:A:554:PHE:CE1	2.55	0.41
1:A:640:ARG:HG3	1:A:649:PHE:CE2	2.56	0.41
2:X:10:DA:C1'	2:X:11:DG:H5'	2.50	0.41
1:A:27:TRP:CZ2	1:A:95:ARG:NH1	2.88	0.41
1:A:558:LEU:O	1:A:561:LEU:HB2	2.20	0.41
1:A:103:PRO:CA	1:A:106:ARG:HH21	2.33	0.41
1:A:558:LEU:HD22	1:A:568:TYR:CE2	2.55	0.41
1:A:89:ARG:HD2	1:A:91:TYR:CE1	2.55	0.41
1:A:550:PRO:HD2	1:A:553:GLU:OE2	2.20	0.41
1:A:600:THR:HB	1:A:620:VAL:HG22	2.02	0.41
3:Y:5:C:H2'	3:Y:6:U:C6	2.56	0.41
1:A:29:LEU:HD12	1:A:29:LEU:N	2.36	0.41
1:A:43:TYR:CB	1:A:44:PRO:HD3	2.51	0.41
1:A:114:ARG:HG3	1:A:132:LEU:HD11	2.03	0.41
1:A:254:ILE:CG2	2:X:21:DT:O4'	2.66	0.41
1:A:365:LEU:HD23	1:A:365:LEU:HA	1.93	0.41
1:A:102:ASP:OD1	1:A:103:PRO:HD2	2.22	0.40
1:A:531:ARG:HH11	1:A:537:LEU:HD22	1.86	0.40
1:A:228:ALA:C	1:A:230:LYS:N	2.73	0.40
1:A:604:LEU:HD11	1:A:614:PRO:HB2	2.02	0.40
1:A:642:TYR:CE2	1:A:644:ALA:HB3	2.56	0.40

There are no symmetry-related clashes.

5.3 Torsion angles [i](#)

5.3.1 Protein backbone [i](#)

In the following table, the Percentiles column shows the percent Ramachandran outliers of the chain as a percentile score with respect to all X-ray entries followed by that with respect to entries of similar resolution.

The Analysed column shows the number of residues for which the backbone conformation was analysed, and the total number of residues.

Mol	Chain	Analysed	Favoured	Allowed	Outliers	Percentiles
1	A	665/685 (97%)	583 (88%)	64 (10%)	18 (3%)	5 8

All (18) Ramachandran outliers are listed below:

Mol	Chain	Res	Type
1	A	5	GLY
1	A	188	PRO
1	A	246	ASP
1	A	247	PRO
1	A	339	TYR
1	A	374	ALA
1	A	508	ALA
1	A	550	PRO
1	A	551	GLN
1	A	39	ARG
1	A	255	PRO
1	A	538	PRO
1	A	37	PRO
1	A	212	PRO
1	A	229	SER
1	A	268	GLU
1	A	373	GLY
1	A	244	VAL

5.3.2 Protein sidechains [i](#)

In the following table, the Percentiles column shows the percent sidechain outliers of the chain as a percentile score with respect to all X-ray entries followed by that with respect to entries of similar resolution.

The Analysed column shows the number of residues for which the sidechain conformation was analysed, and the total number of residues.

Mol	Chain	Analysed	Rotameric	Outliers	Percentiles
1	A	488/549 (89%)	415 (85%)	73 (15%)	3 5

All (73) residues with a non-rotameric sidechain are listed below:

Mol	Chain	Res	Type
1	A	6	LYS
1	A	21	PRO
1	A	45	LEU
1	A	64	LEU
1	A	81	ARG
1	A	125	GLU
1	A	155	LEU
1	A	159	ASP
1	A	160	SER
1	A	165	LEU
1	A	172	ARG
1	A	185	GLN
1	A	199	ARG
1	A	201	THR
1	A	206	ARG
1	A	210	GLU
1	A	212	PRO
1	A	233	LEU
1	A	255	PRO
1	A	287	ARG
1	A	299	ARG
1	A	300	ARG
1	A	307	GLU
1	A	309	VAL
1	A	317	SER
1	A	338	PHE
1	A	344	THR
1	A	346	LEU
1	A	350	ARG
1	A	359	GLU
1	A	361	LEU
1	A	366	LEU
1	A	376	LEU
1	A	377	ARG
1	A	392	ARG

Continued on next page...

Continued from previous page...

Mol	Chain	Res	Type
1	A	400	GLU
1	A	410	THR
1	A	426	LEU
1	A	444	ARG
1	A	446	ARG
1	A	449	ASN
1	A	451	LEU
1	A	452	LEU
1	A	454	LEU
1	A	486	ARG
1	A	500	HIS
1	A	501	LEU
1	A	502	LEU
1	A	512	GLU
1	A	513	ARG
1	A	516	GLN
1	A	524	GLU
1	A	525	GLU
1	A	528	TRP
1	A	531	ARG
1	A	532	ARG
1	A	548	ARG
1	A	552	ASP
1	A	559	GLU
1	A	566	ILE
1	A	570	LEU
1	A	580	ARG
1	A	598	ASP
1	A	600	THR
1	A	609	ASP
1	A	610	PHE
1	A	611	ARG
1	A	637	HIS
1	A	639	THR
1	A	640	ARG
1	A	660	ASP
1	A	661	ARG
1	A	676	GLU

Sometimes sidechains can be flipped to improve hydrogen bonding and reduce clashes. All (10) such sidechains are listed below:

Mol	Chain	Res	Type
1	A	48	GLN
1	A	256	HIS
1	A	312	GLN
1	A	342	GLN
1	A	404	GLN
1	A	500	HIS
1	A	546	ASN
1	A	551	GLN
1	A	633	HIS
1	A	637	HIS

5.3.3 RNA [i](#)

Mol	Chain	Analysed	Backbone Outliers	Pucker Outliers
3	Y	10/12 (83%)	0	1 (10%)

There are no RNA backbone outliers to report.

All (1) RNA pucker outliers are listed below:

Mol	Chain	Res	Type
3	Y	11	C

5.4 Non-standard residues in protein, DNA, RNA chains [i](#)

There are no non-standard protein/DNA/RNA residues in this entry.

5.5 Carbohydrates [i](#)

There are no monosaccharides in this entry.

5.6 Ligand geometry [i](#)

Of 1 ligands modelled in this entry, 1 is monoatomic - leaving 0 for Mogul analysis.

There are no bond length outliers.

There are no bond angle outliers.

There are no chirality outliers.

There are no torsion outliers.

There are no ring outliers.

No monomer is involved in short contacts.

5.7 Other polymers

There are no such residues in this entry.

5.8 Polymer linkage issues

There are no chain breaks in this entry.

6 Fit of model and data

6.1 Protein, DNA and RNA chains

In the following table, the column labelled ‘#RSRZ > 2’ contains the number (and percentage) of RSRZ outliers, followed by percent RSRZ outliers for the chain as percentile scores relative to all X-ray entries and entries of similar resolution. The OWAB column contains the minimum, median, 95th percentile and maximum values of the occupancy-weighted average B-factor per residue. The column labelled ‘Q < 0.9’ lists the number of (and percentage) of residues with an average occupancy less than 0.9.

Mol	Chain	Analysed	<RSRZ>	#RSRZ>2	OWAB(Å ²)	Q<0.9
1	A	673/685 (98%)	-0.03	20 (2%) 50 43	28, 59, 98, 114	1 (0%)
2	X	15/21 (71%)	0.13	2 (13%) 3 2	35, 48, 126, 127	0
3	Y	12/12 (100%)	-0.67	0 100 100	57, 65, 79, 88	0
All	All	700/718 (97%)	-0.04	22 (3%) 49 42	28, 59, 99, 127	1 (0%)

All (22) RSRZ outliers are listed below:

Mol	Chain	Res	Type	RSRZ
1	A	197	TYR	4.3
1	A	253	PRO	4.0
1	A	245	ALA	4.0
1	A	247	PRO	4.0
1	A	256	HIS	3.3
1	A	244	VAL	3.2
1	A	204	LEU	3.1
1	A	207	LEU	3.1
1	A	224	LEU	3.0
1	A	252	LYS	3.0
1	A	260	LEU	3.0
1	A	255	PRO	2.8
1	A	674	LEU	2.6
1	A	254	ILE	2.5
1	A	202	TRP	2.5
1	A	609	ASP	2.5
2	X	20	DG	2.5
2	X	21	DT	2.4
1	A	200	ARG	2.2
1	A	229	SER	2.2
1	A	193	VAL	2.2
1	A	233	LEU	2.1

6.2 Non-standard residues in protein, DNA, RNA chains [i](#)

There are no non-standard protein/DNA/RNA residues in this entry.

6.3 Carbohydrates [i](#)

There are no monosaccharides in this entry.

6.4 Ligands [i](#)

In the following table, the Atoms column lists the number of modelled atoms in the group and the number defined in the chemical component dictionary. The B-factors column lists the minimum, median, 95th percentile and maximum values of B factors of atoms in the group. The column labelled 'Q< 0.9' lists the number of atoms with occupancy less than 0.9.

Mol	Type	Chain	Res	Atoms	RSCC	RSR	B-factors(Å ²)	Q<0.9
4	MG	X	22	1/1	0.91	0.23	32,32,32,32	0

6.5 Other polymers [i](#)

There are no such residues in this entry.