



wwPDB X-ray Structure Validation Summary Report ⓘ

May 15, 2020 – 09:00 pm BST

PDB ID : 3HO8
Title : Crystal Structure of *S. aureus* Pyruvate Carboxylase in complex with Coenzyme A
Authors : Tong, L.; Yu, L.P.C.
Deposited on : 2009-06-01
Resolution : 2.90 Å(reported)

This is a wwPDB X-ray Structure Validation Summary Report for a publicly released PDB entry.

We welcome your comments at validation@mail.wwpdb.org

A user guide is available at

<https://www.wwpdb.org/validation/2017/XrayValidationReportHelp>

with specific help available everywhere you see the ⓘ symbol.

The following versions of software and data (see [references ⓘ](#)) were used in the production of this report:

MolProbity : 4.02b-467
Mogul : 1.8.5 (274361), CSD as541be (2020)
Xtriage (Phenix) : 1.13
EDS : 2.11
buster-report : 1.1.7 (2018)
Percentile statistics : 20191225.v01 (using entries in the PDB archive December 25th 2019)
Refmac : 5.8.0158
CCP4 : 7.0.044 (Gargrove)
Ideal geometry (proteins) : Engh & Huber (2001)
Ideal geometry (DNA, RNA) : Parkinson et al. (1996)
Validation Pipeline (wwPDB-VP) : 2.11

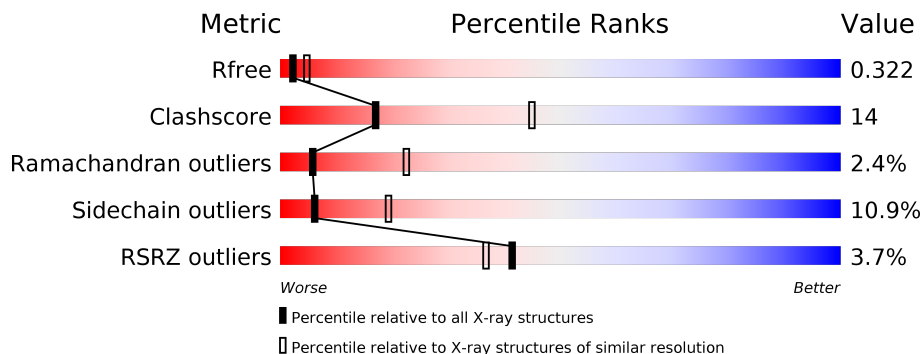
1 Overall quality at a glance i

The following experimental techniques were used to determine the structure:

X-RAY DIFFRACTION

The reported resolution of this entry is 2.90 Å.

Percentile scores (ranging between 0-100) for global validation metrics of the entry are shown in the following graphic. The table shows the number of entries on which the scores are based.



Metric	Whole archive (#Entries)	Similar resolution (#Entries, resolution range(Å))
R_{free}	130704	1957 (2.90-2.90)
Clashscore	141614	2172 (2.90-2.90)
Ramachandran outliers	138981	2115 (2.90-2.90)
Sidechain outliers	138945	2117 (2.90-2.90)
RSRZ outliers	127900	1906 (2.90-2.90)

The table below summarises the geometric issues observed across the polymeric chains and their fit to the electron density. The red, orange, yellow and green segments on the lower bar indicate the fraction of residues that contain outliers for ≥ 3 , 2, 1 and 0 types of geometric quality criteria respectively. A grey segment represents the fraction of residues that are not modelled. The numeric value for each fraction is indicated below the corresponding segment, with a dot representing fractions $\leq 5\%$. The upper red bar (where present) indicates the fraction of residues that have poor fit to the electron density. The numeric value is given above the bar.

Mol	Chain	Length	Quality of chain
1	A	1150	4% (Poor fit) 57% (0 outliers), 26% (1 outlier), 14% (2+ outliers)
1	B	1150	0% (Poor fit) 52% (0 outliers), 29% (1 outlier), 5% (2 outliers), 14% (2+ outliers)
1	C	1150	2% (Poor fit) 56% (0 outliers), 26% (1 outlier), 13% (2+ outliers)
1	D	1150	6% (Poor fit) 54% (0 outliers), 23% (1 outlier), 19% (2+ outliers)

2 Entry composition [i](#)

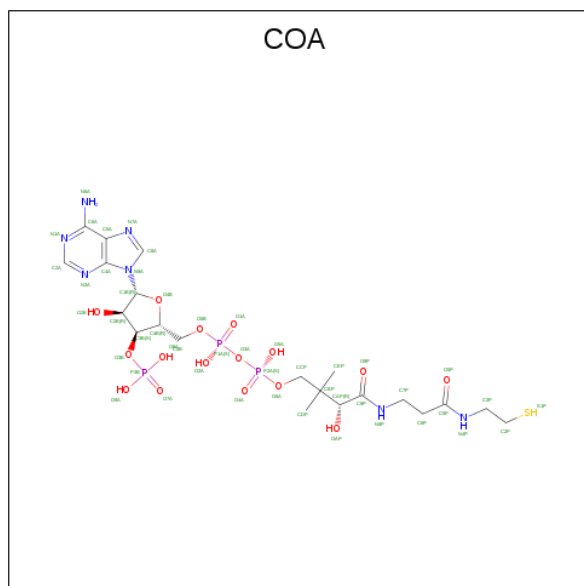
There are 4 unique types of molecules in this entry. The entry contains 31229 atoms, of which 0 are hydrogens and 0 are deuteriums.

In the tables below, the ZeroOcc column contains the number of atoms modelled with zero occupancy, the AltConf column contains the number of residues with at least one atom in alternate conformation and the Trace column contains the number of residues modelled with at most 2 atoms.

- Molecule 1 is a protein called Pyruvate carboxylase.

Mol	Chain	Residues	Atoms					ZeroOcc	AltConf	Trace
			Total	C	N	O	S			
1	A	994	Total 7880	C 5000	N 1329	O 1525	S 26	0	0	0
1	D	934	Total 7396	C 4696	N 1250	O 1426	S 24	0	0	0
1	C	995	Total 7889	C 5005	N 1330	O 1528	S 26	0	0	0
1	B	989	Total 7838	C 4975	N 1321	O 1516	S 26	0	0	0

- Molecule 2 is COENZYME A (three-letter code: COA) (formula: $C_{21}H_{36}N_7O_{16}P_3S$).



Mol	Chain	Residues	Atoms					ZeroOcc	AltConf	
			Total	C	N	O	P			S
2	A	1	Total 48	C 21	N 7	O 16	P 3	S 1	0	0
2	D	1	Total 48	C 21	N 7	O 16	P 3	S 1	0	0

Continued on next page...

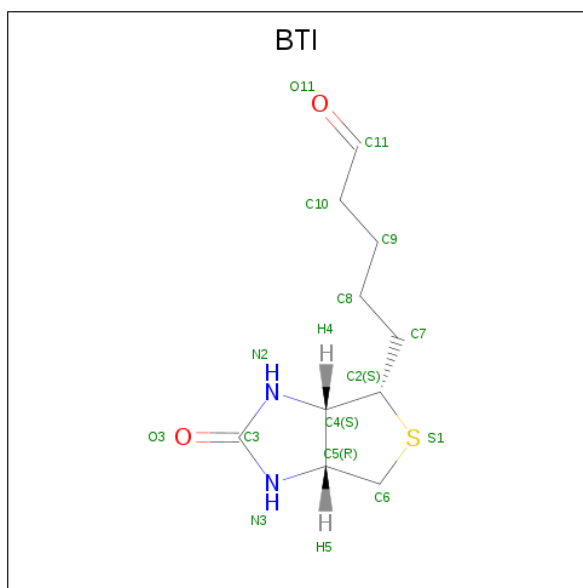
Continued from previous page...

Mol	Chain	Residues	Atoms					ZeroOcc	AltConf	
2	C	1	Total	C	N	O	P	S	0	0
			48	21	7	16	3	1		
2	B	1	Total	C	N	O	P	S	0	0
			48	21	7	16	3	1		

- Molecule 3 is MANGANESE (II) ION (three-letter code: MN) (formula: Mn).

Mol	Chain	Residues	Atoms		ZeroOcc	AltConf
3	B	1	Total	Mn	0	0
			1	1		
3	A	1	Total	Mn	0	0
			1	1		
3	D	1	Total	Mn	0	0
			1	1		
3	C	1	Total	Mn	0	0
			1	1		

- Molecule 4 is 5-(HEXAHYDRO-2-OXO-1H-THIENO[3,4-D]IMIDAZOL-6-YL)PENTANAL (three-letter code: BTI) (formula: C₁₀H₁₆N₂O₂S).

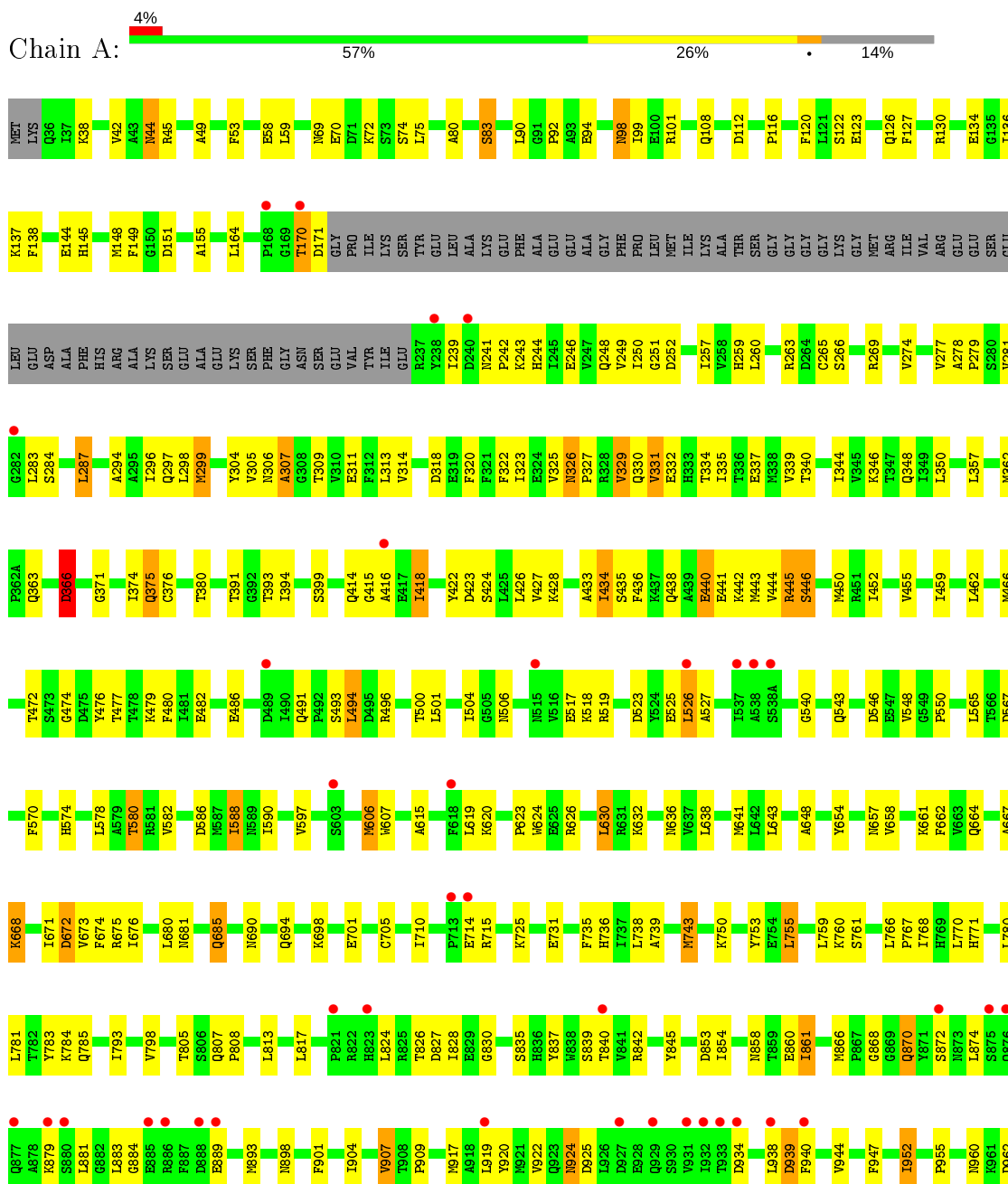


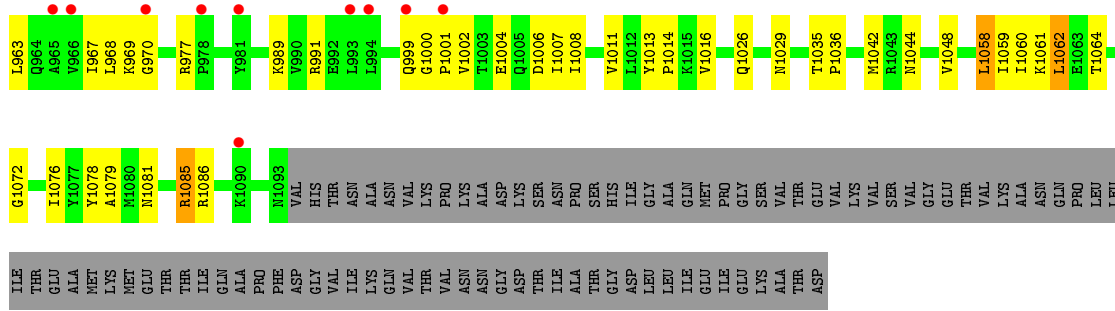
Mol	Chain	Residues	Atoms				ZeroOcc	AltConf	
4	C	1	Total	C	N	O	S	0	0
			15	10	2	2	1		
4	B	1	Total	C	N	O	S	0	0
			15	10	2	2	1		

3 Residue-property plots [i](#)

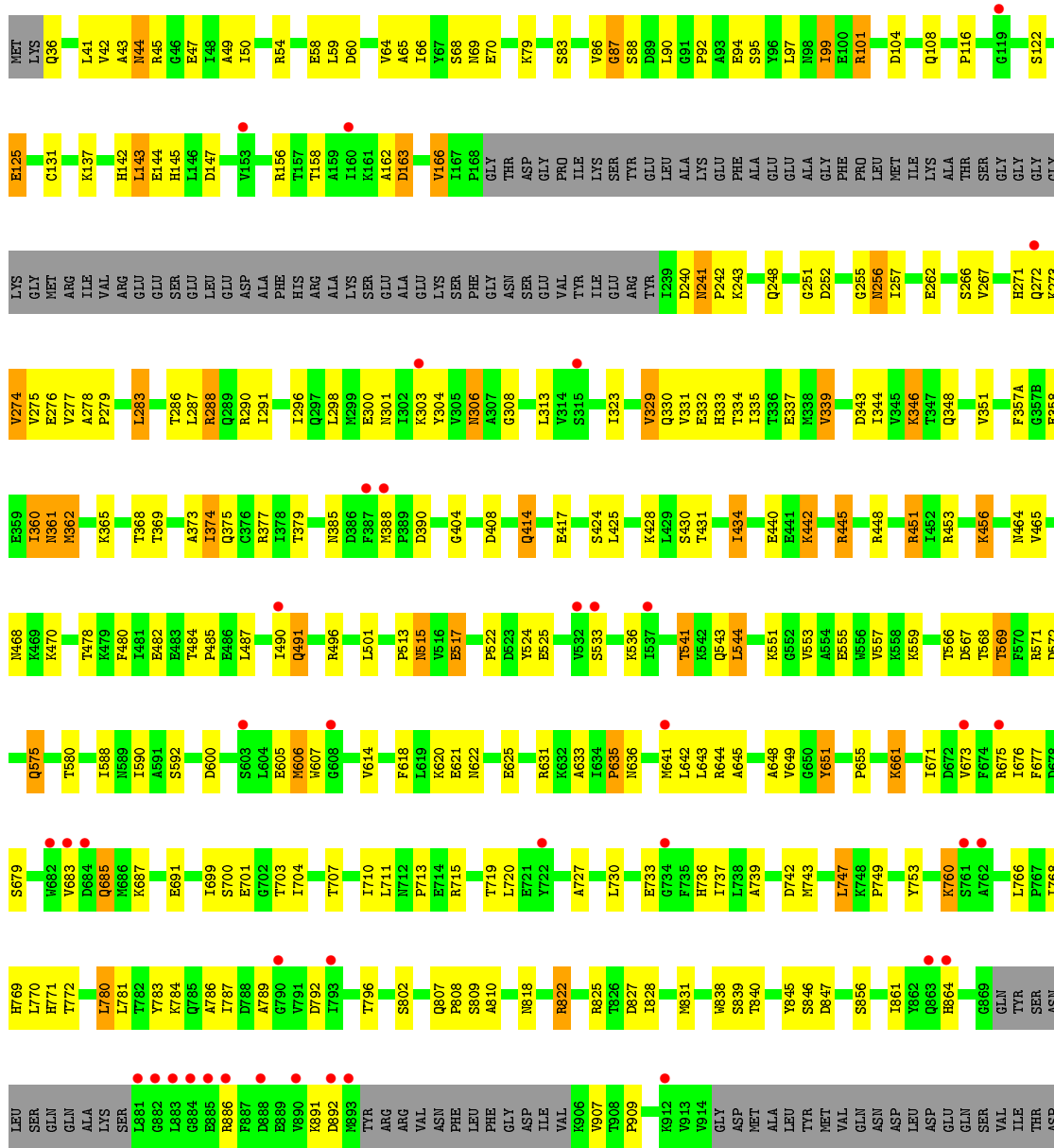
These plots are drawn for all protein, RNA and DNA chains in the entry. The first graphic for a chain summarises the proportions of the various outlier classes displayed in the second graphic. The second graphic shows the sequence view annotated by issues in geometry and electron density. Residues are color-coded according to the number of geometric quality criteria for which they contain at least one outlier: green = 0, yellow = 1, orange = 2 and red = 3 or more. A red dot above a residue indicates a poor fit to the electron density ($RSRZ > 2$). Stretches of 2 or more consecutive residues without any outlier are shown as a green connector. Residues present in the sample, but not in the model, are shown in grey.

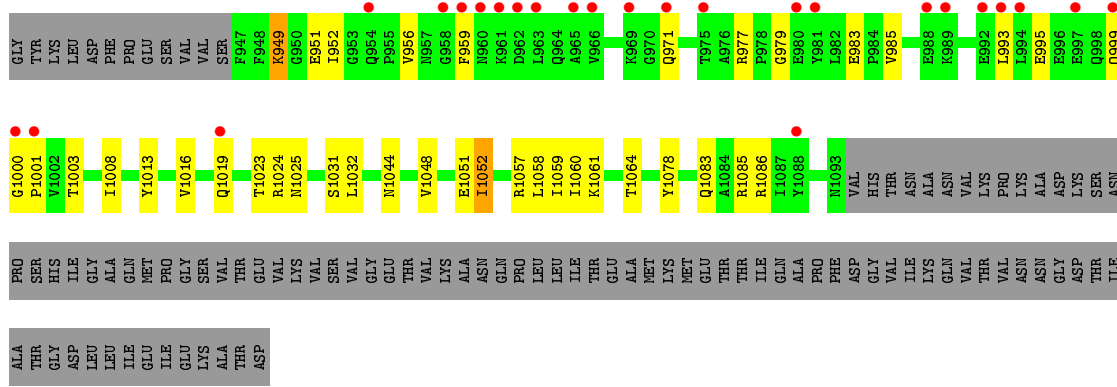
- Molecule 1: Pyruvate carboxylase



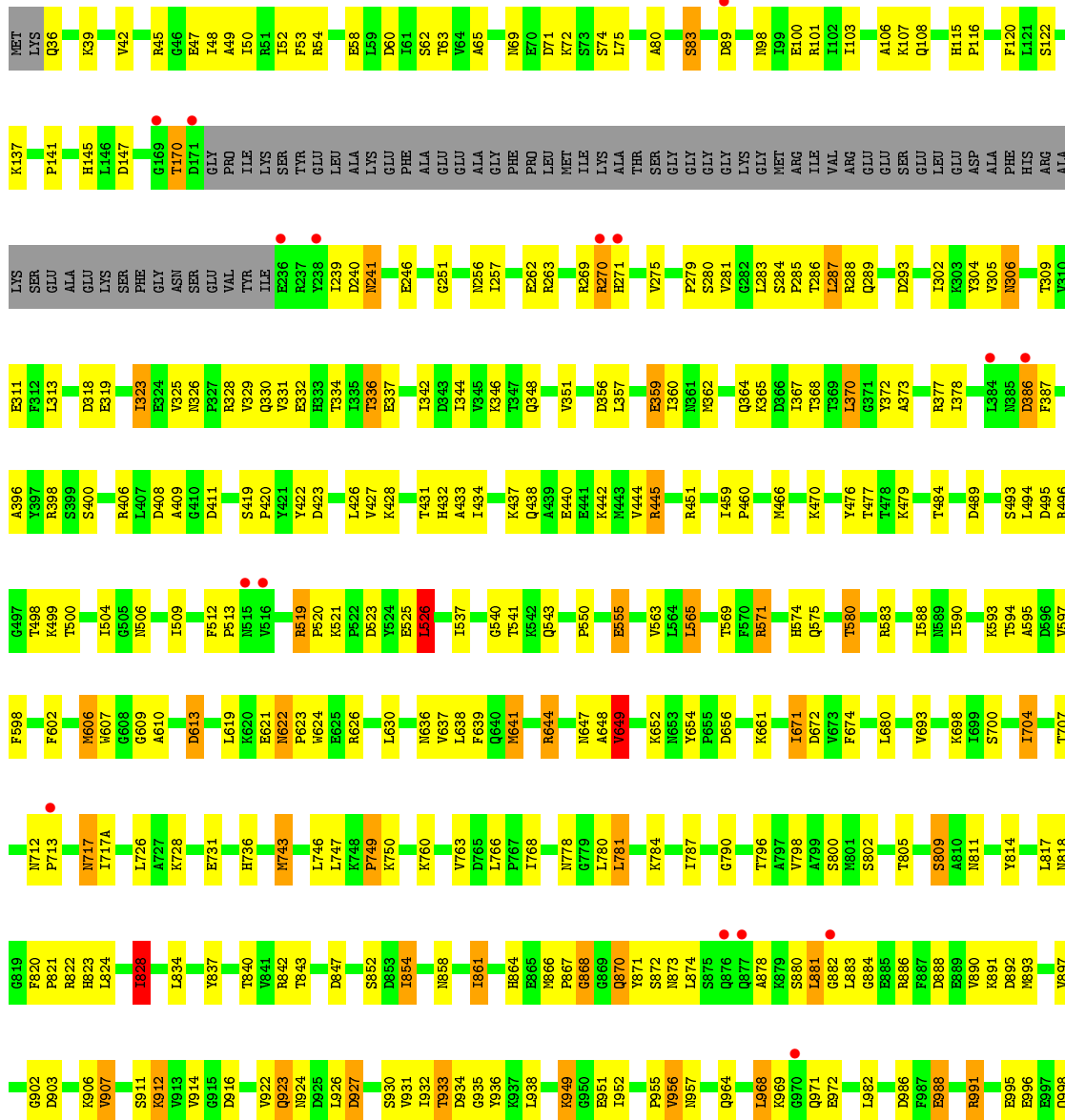


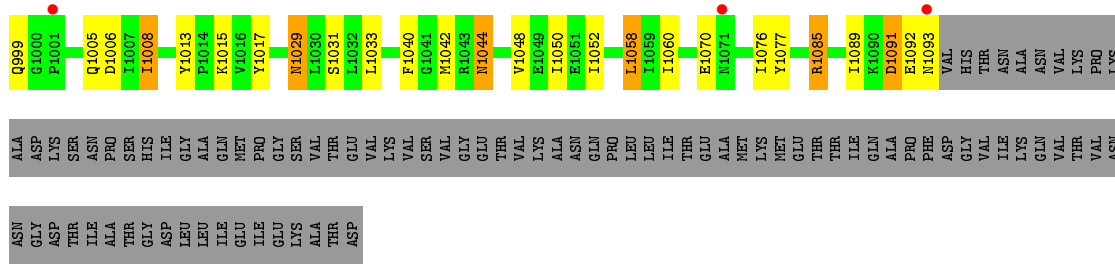
• Molecule 1: Pyruvate carboxylase



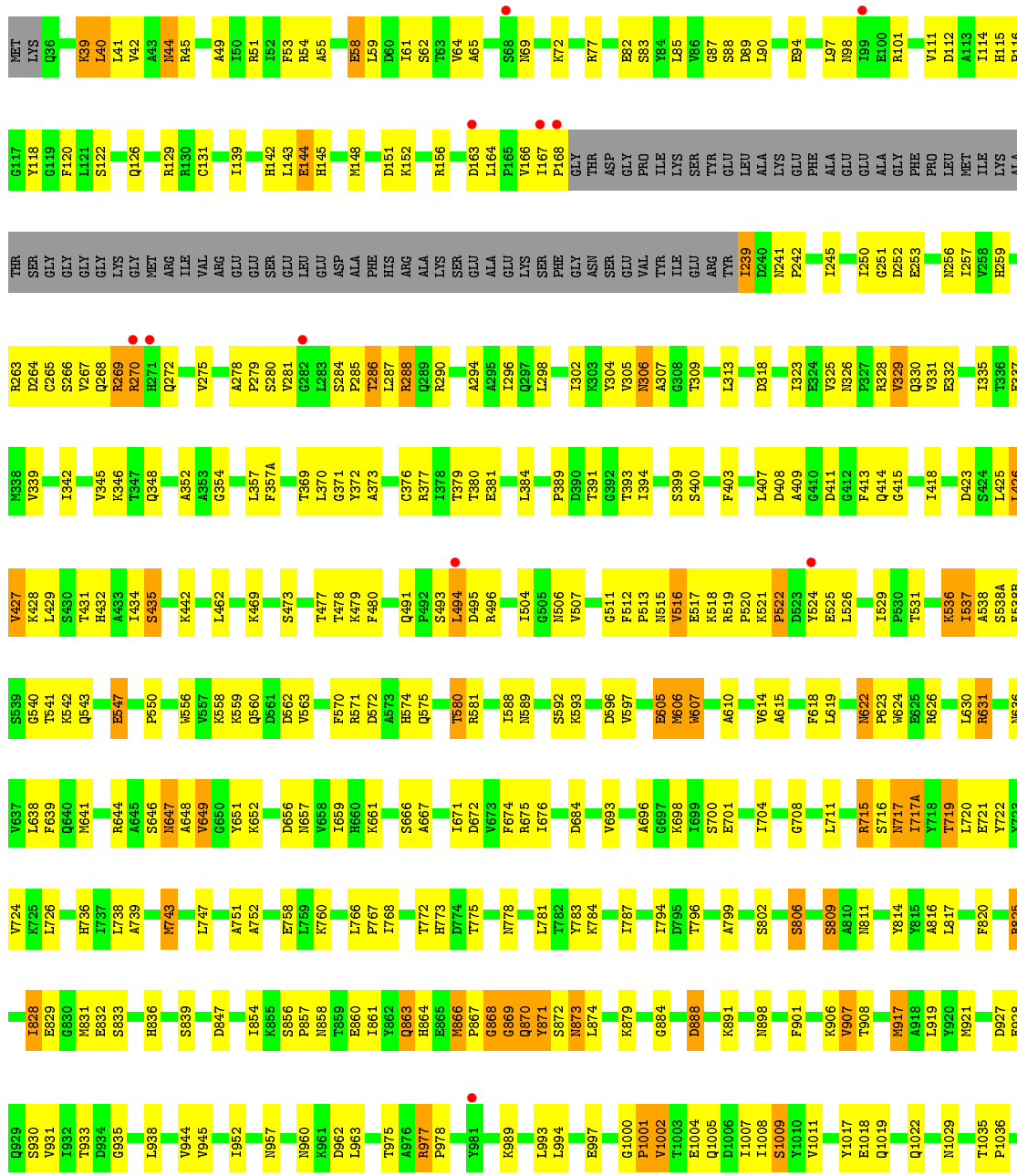


● Molecule 1: Pyruvate carboxylase





• Molecule 1: Pyruvate carboxylase



M1042	SER
R1043	VAL
M1044	GLY
E1049	GLU
D1053	THR
I1059	VAL
I1060	LYS
I1065	ALA
E1070	ASN
M1071	GLN
I1076	PRO
Y1077	LEU
M1080	LEU
M1081	ILE
R1086	THR
I1089	ILE
E1092	GLN
M1093	ALA
VAL	PRO
HIS	PHE
GLY	ASP
THR	GLY
ASN	VAL
ALA	ILE
ASN	LYS
VAL	GLN
VAL	VAL
LYS	THR
PRO	VAL
LYS	ASN
ALA	ASN
ASP	GLY
LYS	ASP
THR	THR
SER	SER
ASN	ILE
PRO	ALA
SER	THR
HIS	GLY
ILE	ASP
ILE	ILE
GLY	LEU
ALA	LEU
GLN	ILE
MET	GLU
PRO	ILE
GLY	GLU
SER	LYS
VAL	ALA
THR	THR
GLU	ASP
LYS	VAL
VAL	VAL

4 Data and refinement statistics

Property	Value	Source
Space group	P 21 21 21	Depositor
Cell constants a, b, c, α , β , γ	96.59Å 164.47Å 373.35Å 90.00° 90.00° 90.00°	Depositor
Resolution (Å)	29.97 – 2.90 29.98 – 2.90	Depositor EDS
% Data completeness (in resolution range)	89.8 (29.97-2.90) 89.8 (29.98-2.90)	Depositor EDS
R_{merge}	0.14	Depositor
R_{sym}	(Not available)	Depositor
$\langle I/\sigma(I) \rangle$ ¹	2.03 (at 2.90Å)	Xtrriage
Refinement program	REFMAC 5.5.0072	Depositor
R, R_{free}	0.264 , 0.328 0.266 , 0.322	Depositor DCC
R_{free} test set	5969 reflections (5.04%)	wwPDB-VP
Wilson B-factor (Å ²)	64.2	Xtrriage
Anisotropy	0.098	Xtrriage
Bulk solvent k_{sol} (e/Å ³), B_{sol} (Å ²)	0.30 , 42.4	EDS
L-test for twinning ²	$\langle L \rangle = 0.47$, $\langle L^2 \rangle = 0.30$	Xtrriage
Estimated twinning fraction	No twinning to report.	Xtrriage
F_o, F_c correlation	0.88	EDS
Total number of atoms	31229	wwPDB-VP
Average B, all atoms (Å ²)	67.0	wwPDB-VP

Xtrriage's analysis on translational NCS is as follows: *The analyses of the Patterson function reveals a significant off-origin peak that is 22.90 % of the origin peak, indicating pseudo-translational symmetry. The chance of finding a peak of this or larger height randomly in a structure without pseudo-translational symmetry is equal to 5.1935e-03. The detected translational NCS is most likely also responsible for the elevated intensity ratio.*

¹Intensities estimated from amplitudes.

²Theoretical values of $\langle |L| \rangle$, $\langle L^2 \rangle$ for acentric reflections are 0.5, 0.333 respectively for untwinned datasets, and 0.375, 0.2 for perfectly twinned datasets.

5 Model quality [i](#)

5.1 Standard geometry [i](#)

Bond lengths and bond angles in the following residue types are not validated in this section: COA, MN, BTI

The Z score for a bond length (or angle) is the number of standard deviations the observed value is removed from the expected value. A bond length (or angle) with $|Z| > 5$ is considered an outlier worth inspection. RMSZ is the root-mean-square of all Z scores of the bond lengths (or angles).

Mol	Chain	Bond lengths		Bond angles	
		RMSZ	# Z >5	RMSZ	# Z >5
1	A	0.43	0/8033	0.60	1/10868 (0.0%)
1	B	0.49	0/7990	0.64	0/10810
1	C	0.50	0/8042	0.65	2/10880 (0.0%)
1	D	0.43	0/7537	0.60	0/10192
All	All	0.47	0/31602	0.62	3/42750 (0.0%)

Chiral center outliers are detected by calculating the chiral volume of a chiral center and verifying if the center is modelled as a planar moiety or with the opposite hand. A planarity outlier is detected by checking planarity of atoms in a peptide group, atoms in a mainchain group or atoms of a sidechain that are expected to be planar.

Mol	Chain	#Chirality outliers	#Planarity outliers
1	C	0	1

There are no bond length outliers.

All (3) bond angle outliers are listed below:

Mol	Chain	Res	Type	Atoms	Z	Observed($^{\circ}$)	Ideal($^{\circ}$)
1	A	526	LEU	CA-CB-CG	5.56	128.09	115.30
1	C	828	ILE	CB-CA-C	-5.22	101.16	111.60
1	C	526	LEU	CA-CB-CG	5.00	126.81	115.30

There are no chirality outliers.

All (1) planarity outliers are listed below:

Mol	Chain	Res	Type	Group
1	C	880	SER	Peptide

5.2 Too-close contacts [i](#)

In the following table, the Non-H and H(model) columns list the number of non-hydrogen atoms and hydrogen atoms in the chain respectively. The H(added) column lists the number of hydrogen atoms added and optimized by MolProbity. The Clashes column lists the number of clashes within the asymmetric unit, whereas Symm-Clashes lists symmetry related clashes.

Mol	Chain	Non-H	H(model)	H(added)	Clashes	Symm-Clashes
1	A	7880	0	7807	199	0
1	B	7838	0	7771	292	0
1	C	7889	0	7813	232	0
1	D	7396	0	7347	158	0
2	A	48	0	32	0	0
2	B	48	0	32	1	0
2	C	48	0	32	2	0
2	D	48	0	32	6	0
3	A	1	0	0	0	0
3	B	1	0	0	0	0
3	C	1	0	0	0	0
3	D	1	0	0	0	0
4	B	15	0	16	0	0
4	C	15	0	16	3	0
All	All	31229	0	30898	870	0

The all-atom clashscore is defined as the number of clashes found per 1000 atoms (including hydrogen atoms). The all-atom clashscore for this structure is 14.

The worst 5 of 870 close contacts within the same asymmetric unit are listed below, sorted by their clash magnitude.

Atom-1	Atom-2	Interatomic distance (Å)	Clash overlap (Å)
1:C:504:ILE:HG21	1:C:1042:MET:HE2	1.18	1.12
1:C:704:ILE:HG12	1:C:726:LEU:HD23	1.22	1.12
1:A:304:TYR:HE2	1:A:307:ALA:O	1.35	1.10
1:A:1085:ARG:HG2	1:A:1085:ARG:HH11	1.12	1.06
1:C:743:MET:HG3	1:C:907:VAL:HG13	1.38	1.04

There are no symmetry-related clashes.

5.3 Torsion angles [i](#)

5.3.1 Protein backbone [i](#)

In the following table, the Percentiles column shows the percent Ramachandran outliers of the chain as a percentile score with respect to all X-ray entries followed by that with respect to entries of similar resolution.

The Analysed column shows the number of residues for which the backbone conformation was analysed, and the total number of residues.

Mol	Chain	Analysed	Favoured	Allowed	Outliers	Percentiles	
1	A	990/1150 (86%)	862 (87%)	105 (11%)	23 (2%)	6	23
1	B	985/1150 (86%)	875 (89%)	89 (9%)	21 (2%)	7	26
1	C	991/1150 (86%)	887 (90%)	79 (8%)	25 (2%)	5	21
1	D	924/1150 (80%)	777 (84%)	123 (13%)	24 (3%)	5	20
All	All	3890/4600 (85%)	3401 (87%)	396 (10%)	93 (2%)	6	22

5 of 93 Ramachandran outliers are listed below:

Mol	Chain	Res	Type
1	A	868	GLY
1	A	939	ASP
1	D	87	GLY
1	D	163	ASP
1	D	272	GLN

5.3.2 Protein sidechains [i](#)

In the following table, the Percentiles column shows the percent sidechain outliers of the chain as a percentile score with respect to all X-ray entries followed by that with respect to entries of similar resolution.

The Analysed column shows the number of residues for which the sidechain conformation was analysed, and the total number of residues.

Mol	Chain	Analysed	Rotameric	Outliers	Percentiles	
1	A	860/987 (87%)	783 (91%)	77 (9%)	9	29
1	B	856/987 (87%)	762 (89%)	94 (11%)	6	19
1	C	861/987 (87%)	759 (88%)	102 (12%)	5	16
1	D	806/987 (82%)	711 (88%)	95 (12%)	5	16
All	All	3383/3948 (86%)	3015 (89%)	368 (11%)	6	19

5 of 368 residues with a non-rotameric sidechain are listed below:

Mol	Chain	Res	Type
1	D	1052	ILE
1	C	411	ASP
1	B	858	ASN
1	D	1086	ARG
1	C	257	ILE

Some sidechains can be flipped to improve hydrogen bonding and reduce clashes. 5 of 122 such sidechains are listed below:

Mol	Chain	Res	Type
1	C	297	GLN
1	C	818	ASN
1	B	898	ASN
1	C	326	ASN
1	C	574	HIS

5.3.3 RNA [i](#)

There are no RNA molecules in this entry.

5.4 Non-standard residues in protein, DNA, RNA chains [i](#)

There are no non-standard protein/DNA/RNA residues in this entry.

5.5 Carbohydrates [i](#)

There are no carbohydrates in this entry.

5.6 Ligand geometry [i](#)

Of 10 ligands modelled in this entry, 4 are monoatomic - leaving 6 for Mogul analysis.

In the following table, the Counts columns list the number of bonds (or angles) for which Mogul statistics could be retrieved, the number of bonds (or angles) that are observed in the model and the number of bonds (or angles) that are defined in the Chemical Component Dictionary. The Link column lists molecule types, if any, to which the group is linked. The Z score for a bond length (or angle) is the number of standard deviations the observed value is removed from the expected value. A bond length (or angle) with $|Z| > 2$ is considered an outlier worth inspection. RMSZ is the root-mean-square of all Z scores of the bond lengths (or angles).

Mol	Type	Chain	Res	Link	Bond lengths			Bond angles		
					Counts	RMSZ	# Z > 2	Counts	RMSZ	# Z > 2
2	COA	C	2001	-	41,50,50	1.06	1 (2%)	52,75,75	1.28	5 (9%)
2	COA	B	2001	-	41,50,50	1.17	2 (4%)	52,75,75	1.48	7 (13%)
2	COA	A	2001	-	41,50,50	0.98	1 (2%)	52,75,75	1.36	6 (11%)
4	BTI	B	2000	-	16,16,16	1.60	2 (12%)	21,21,21	2.05	3 (14%)
4	BTI	C	2000	-	16,16,16	1.67	2 (12%)	21,21,21	2.40	3 (14%)
2	COA	D	2001	-	41,50,50	1.07	1 (2%)	52,75,75	1.28	2 (3%)

In the following table, the Chirals column lists the number of chiral outliers, the number of chiral centers analysed, the number of these observed in the model and the number defined in the Chemical Component Dictionary. Similar counts are reported in the Torsion and Rings columns. '-' means no outliers of that kind were identified.

Mol	Type	Chain	Res	Link	Chirals	Torsions	Rings
2	COA	C	2001	-	-	15/44/64/64	0/3/3/3
2	COA	B	2001	-	-	19/44/64/64	0/3/3/3
2	COA	A	2001	-	-	18/44/64/64	0/3/3/3
4	BTI	B	2000	-	-	3/5/27/27	0/2/2/2
4	BTI	C	2000	-	-	5/5/27/27	0/2/2/2
2	COA	D	2001	-	-	5/44/64/64	0/3/3/3

The worst 5 of 9 bond length outliers are listed below:

Mol	Chain	Res	Type	Atoms	Z	Observed(Å)	Ideal(Å)
4	C	2000	BTI	O3-C3	4.77	1.33	1.23
4	B	2000	BTI	O3-C3	4.46	1.32	1.23
4	C	2000	BTI	C2-S1	-3.62	1.76	1.82
2	B	2001	COA	P3B-O7A	3.44	1.61	1.50
4	B	2000	BTI	C2-S1	-3.36	1.77	1.82

The worst 5 of 26 bond angle outliers are listed below:

Mol	Chain	Res	Type	Atoms	Z	Observed(°)	Ideal(°)
4	C	2000	BTI	C2-C4-N2	-7.22	106.66	113.13
4	B	2000	BTI	C6-C5-N3	-6.32	104.99	113.03
4	C	2000	BTI	C6-C5-N3	-6.22	105.12	113.03
4	B	2000	BTI	C2-C4-N2	-5.02	108.63	113.13
2	B	2001	COA	P2A-O3A-P1A	-4.71	116.67	132.83

There are no chirality outliers.

5 of 65 torsion outliers are listed below:

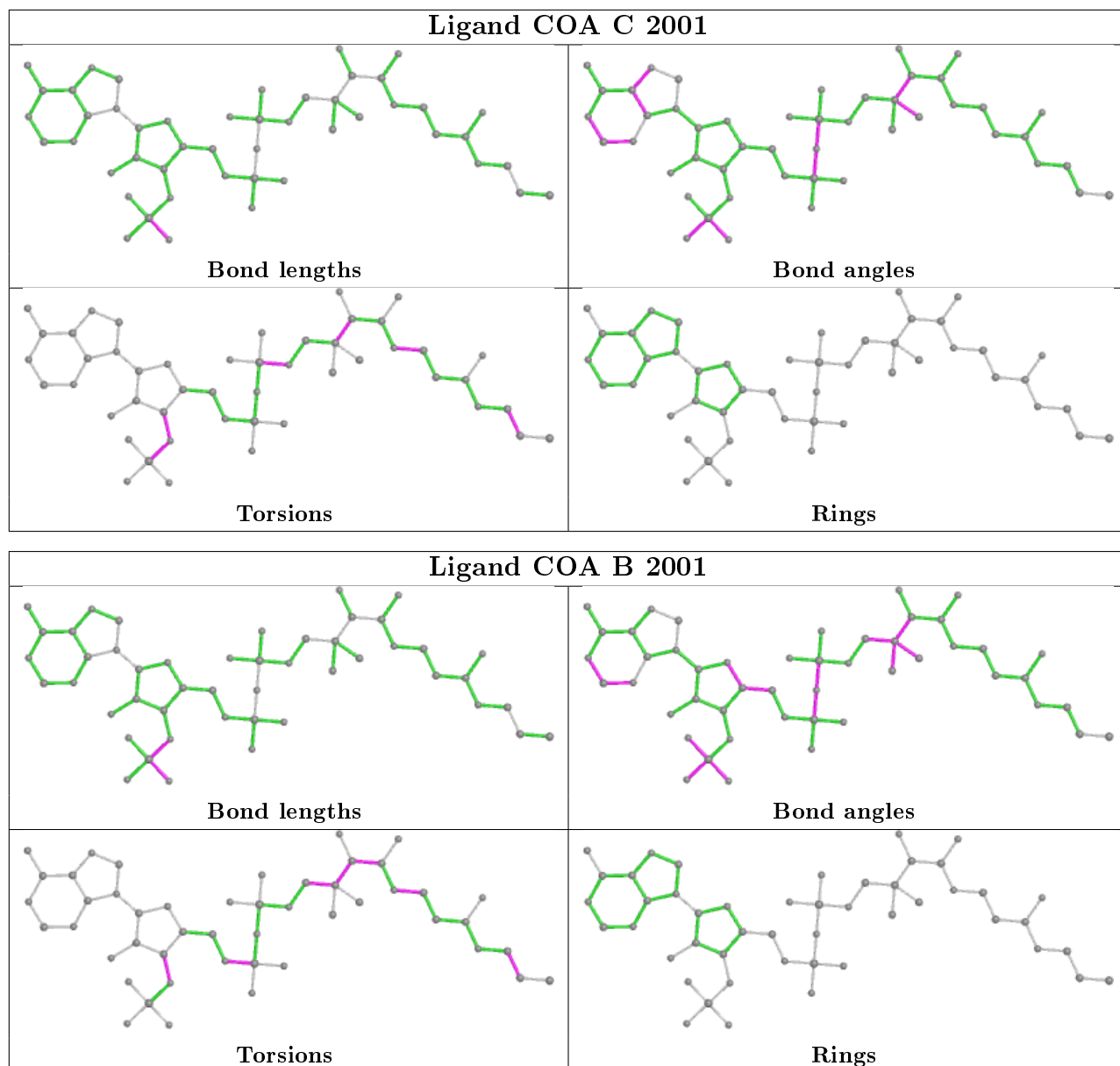
Mol	Chain	Res	Type	Atoms
2	C	2001	COA	CCP-O6A-P2A-O4A
2	C	2001	COA	CCP-O6A-P2A-O5A
2	C	2001	COA	C9P-CAP-CBP-CCP
2	C	2001	COA	C9P-CAP-CBP-CDP
2	C	2001	COA	OAP-CAP-CBP-CEP

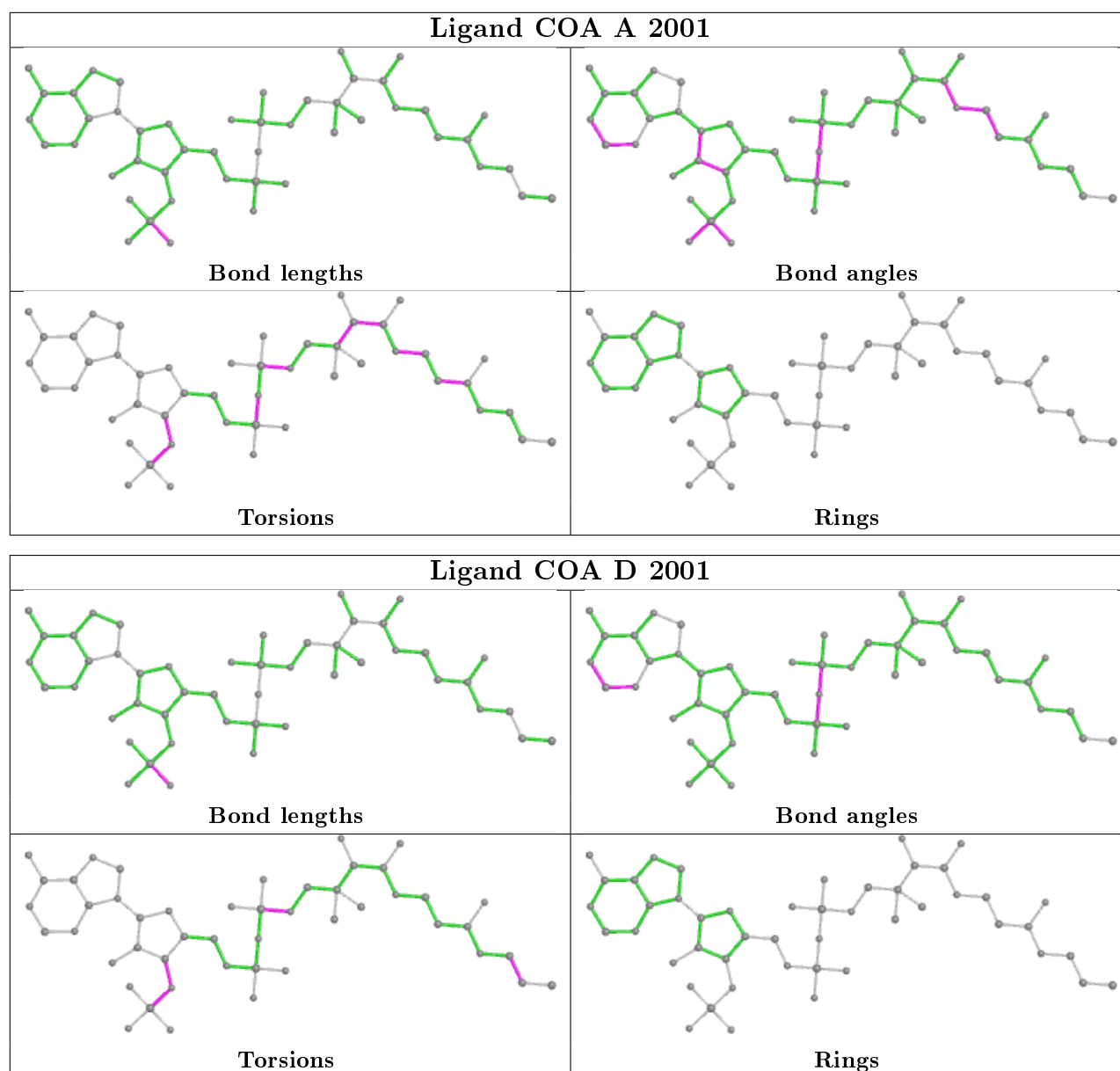
There are no ring outliers.

4 monomers are involved in 12 short contacts:

Mol	Chain	Res	Type	Clashes	Symm-Clashes
2	C	2001	COA	2	0
2	B	2001	COA	1	0
4	C	2000	BTI	3	0
2	D	2001	COA	6	0

The following is a two-dimensional graphical depiction of Mogul quality analysis of bond lengths, bond angles, torsion angles, and ring geometry for all instances of the Ligand of Interest. In addition, ligands with molecular weight > 250 and outliers as shown on the validation Tables will also be included. For torsion angles, if less than 5% of the Mogul distribution of torsion angles is within 10 degrees of the torsion angle in question, then that torsion angle is considered an outlier. Any bond that is central to one or more torsion angles identified as an outlier by Mogul will be highlighted in the graph. For rings, the root-mean-square deviation (RMSD) between the ring in question and similar rings identified by Mogul is calculated over all ring torsion angles. If the average RMSD is greater than 60 degrees and the minimal RMSD between the ring in question and any Mogul-identified rings is also greater than 60 degrees, then that ring is considered an outlier. The outliers are highlighted in purple. The color gray indicates Mogul did not find sufficient equivalents in the CSD to analyse the geometry.





5.7 Other polymers [i](#)

There are no such residues in this entry.

5.8 Polymer linkage issues [i](#)

There are no chain breaks in this entry.

6 Fit of model and data [i](#)

6.1 Protein, DNA and RNA chains [i](#)

In the following table, the column labelled ‘#RSRZ> 2’ contains the number (and percentage) of RSRZ outliers, followed by percent RSRZ outliers for the chain as percentile scores relative to all X-ray entries and entries of similar resolution. The OWAB column contains the minimum, median, 95th percentile and maximum values of the occupancy-weighted average B-factor per residue. The column labelled ‘Q< 0.9’ lists the number of (and percentage) of residues with an average occupancy less than 0.9.

Mol	Chain	Analysed	<RSRZ>	#RSRZ>2	OWAB(Å ²)	Q<0.9
1	A	994/1150 (86%)	0.21	48 (4%) 30 27	39, 76, 117, 151	0
1	B	989/1150 (86%)	-0.20	12 (1%) 79 79	26, 52, 83, 102	0
1	C	995/1150 (86%)	-0.17	19 (1%) 66 65	29, 52, 83, 107	0
1	D	934/1150 (81%)	0.41	64 (6%) 16 13	41, 83, 128, 173	0
All	All	3912/4600 (85%)	0.06	143 (3%) 41 37	26, 64, 111, 173	0

The worst 5 of 143 RSRZ outliers are listed below:

Mol	Chain	Res	Type	RSRZ
1	D	962	ASP	9.6
1	D	965	ALA	6.8
1	D	981	TYR	6.4
1	D	975	THR	5.7
1	D	966	VAL	5.0

6.2 Non-standard residues in protein, DNA, RNA chains [i](#)

There are no non-standard protein/DNA/RNA residues in this entry.

6.3 Carbohydrates [i](#)

There are no carbohydrates in this entry.

6.4 Ligands [i](#)

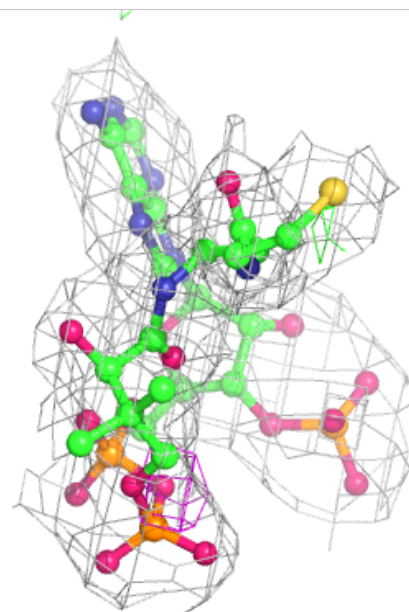
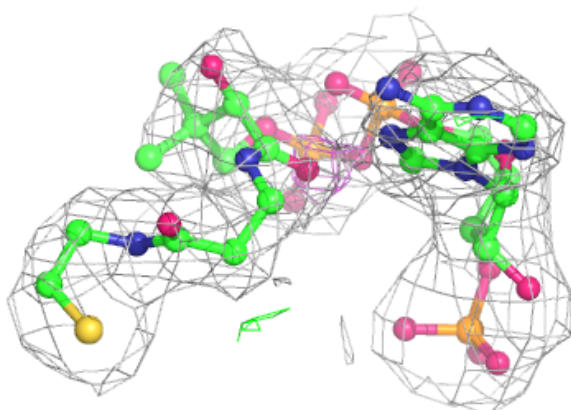
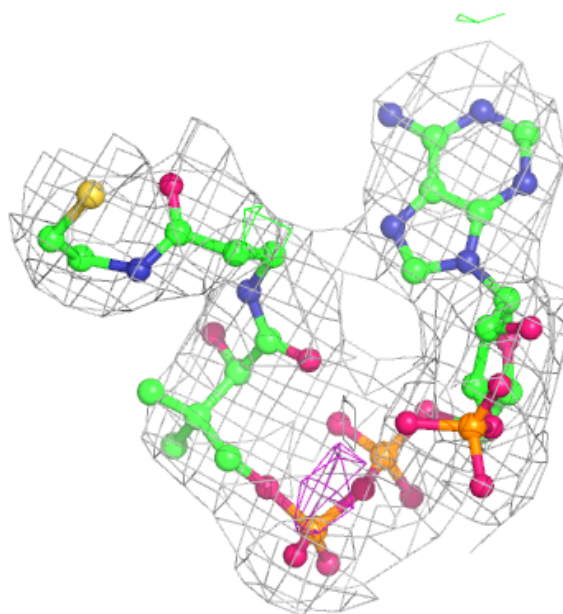
In the following table, the Atoms column lists the number of modelled atoms in the group and the number defined in the chemical component dictionary. The B-factors column lists the minimum, median, 95th percentile and maximum values of B factors of atoms in the group. The column labelled ‘Q< 0.9’ lists the number of atoms with occupancy less than 0.9.

Mol	Type	Chain	Res	Atoms	RSCC	RSR	B-factors(\AA^2)	Q<0.9
3	MN	A	2002	1/1	0.91	0.08	86,86,86,86	0
2	COA	D	2001	48/48	0.94	0.15	45,51,55,56	0
3	MN	B	2002	1/1	0.94	0.08	60,60,60,60	0
4	BTI	B	2000	15/15	0.94	0.13	47,53,54,55	0
4	BTI	C	2000	15/15	0.95	0.12	36,40,42,43	0
2	COA	B	2001	48/48	0.96	0.14	37,40,43,45	0
3	MN	C	2002	1/1	0.96	0.07	65,65,65,65	0
3	MN	D	2002	1/1	0.97	0.10	65,65,65,65	0
2	COA	A	2001	48/48	0.97	0.13	44,48,57,59	0
2	COA	C	2001	48/48	0.97	0.12	32,36,48,51	0

The following is a graphical depiction of the model fit to experimental electron density of all instances of the Ligand of Interest. In addition, ligands with molecular weight > 250 and outliers as shown on the geometry validation Tables will also be included. Each fit is shown from different orientation to approximate a three-dimensional view.

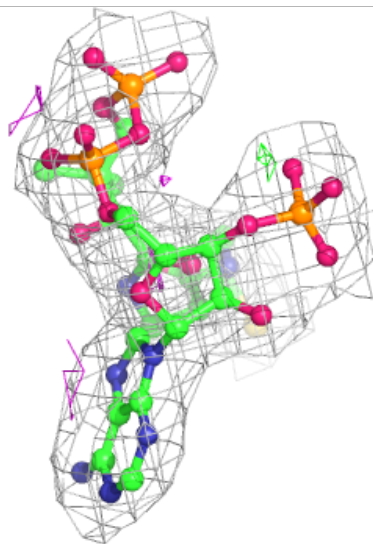
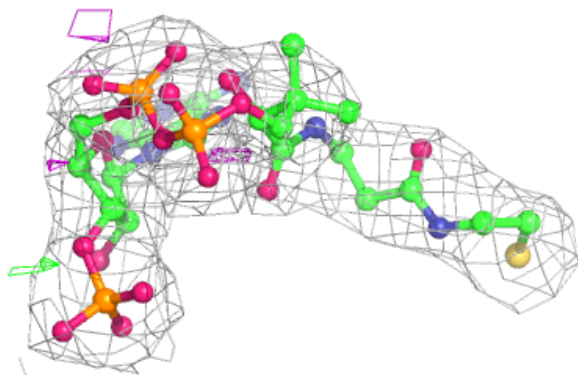
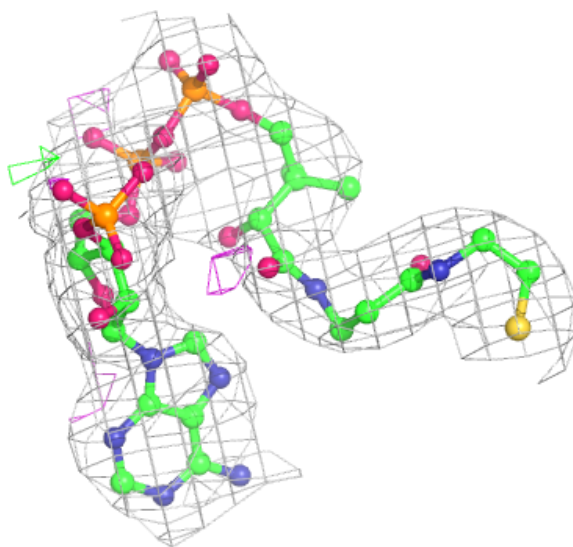
Electron density around COA D 2001:

$2mF_o-DF_c$ (at 0.7 rmsd) in gray
 mF_o-DF_c (at 3 rmsd) in purple (negative)
and green (positive)



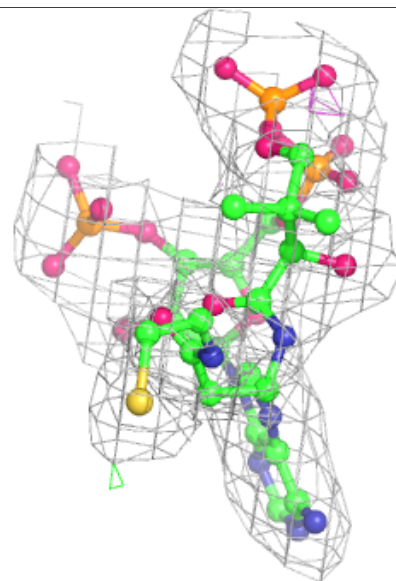
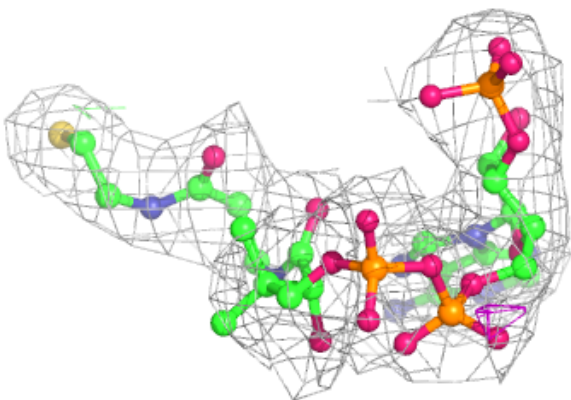
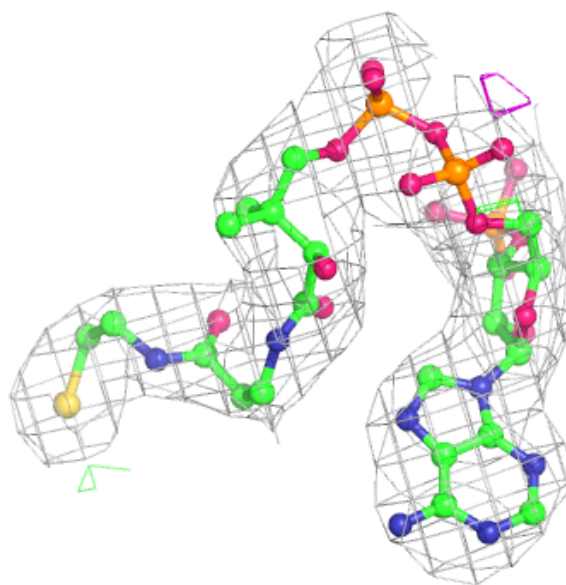
Electron density around COA B 2001:

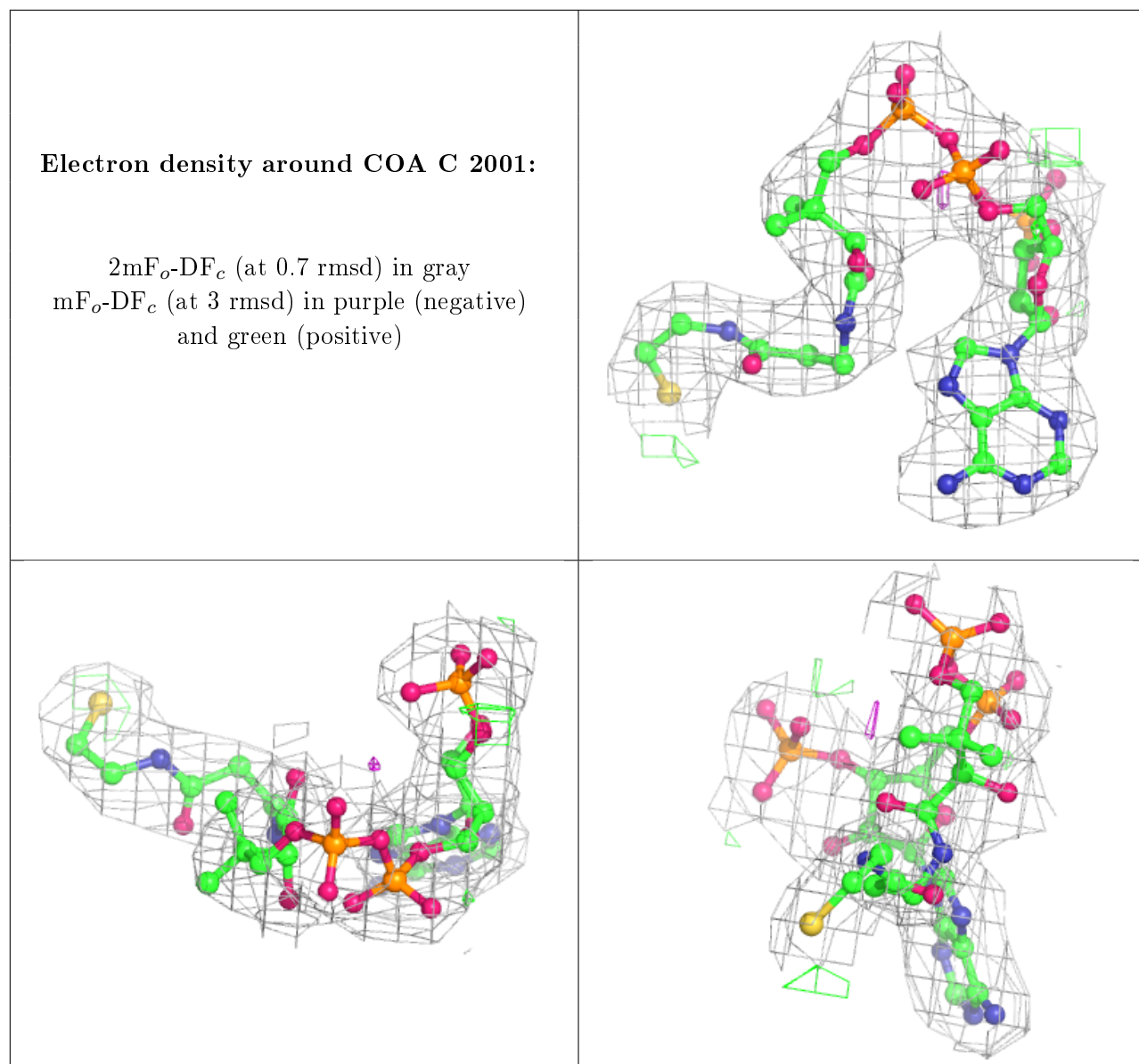
$2mF_o-DF_c$ (at 0.7 rmsd) in gray
 mF_o-DF_c (at 3 rmsd) in purple (negative)
and green (positive)



Electron density around COA A 2001:

$2mF_o-DF_c$ (at 0.7 rmsd) in gray
 mF_o-DF_c (at 3 rmsd) in purple (negative)
and green (positive)





6.5 Other polymers [i](#)

There are no such residues in this entry.