



Full wwPDB X-ray Structure Validation Report ⓘ

Jul 13, 2022 – 05:03 am BST

PDB ID : 6HR6
Title : Nitrocefin reacted with catalytic serine (Ser294) of penicillin-binding protein 3 from *Pseudomonas aeruginosa*
Authors : Bellini, D.; Dowson, C.G.
Deposited on : 2018-09-26
Resolution : 2.53 Å (reported)

This is a Full wwPDB X-ray Structure Validation Report for a publicly released PDB entry.

We welcome your comments at validation@mail.wwpdb.org

A user guide is available at

<https://www.wwpdb.org/validation/2017/XrayValidationReportHelp>

with specific help available everywhere you see the ⓘ symbol.

The types of validation reports are described at <http://www.wwpdb.org/validation/2017/FAQs#types>.

The following versions of software and data (see [references ⓘ](#)) were used in the production of this report:

MolProbity : 4.02b-467
Mogul : 1.8.4, CSD as541be (2020)
Xtriage (Phenix) : 1.13
EDS : 2.29
buster-report : 1.1.7 (2018)
Percentile statistics : 20191225.v01 (using entries in the PDB archive December 25th 2019)
Refmac : 5.8.0267
CCP4 : 7.1.010 (Gargrove)
Ideal geometry (proteins) : Engh & Huber (2001)
Ideal geometry (DNA, RNA) : Parkinson et al. (1996)
Validation Pipeline (wwPDB-VP) : 2.29

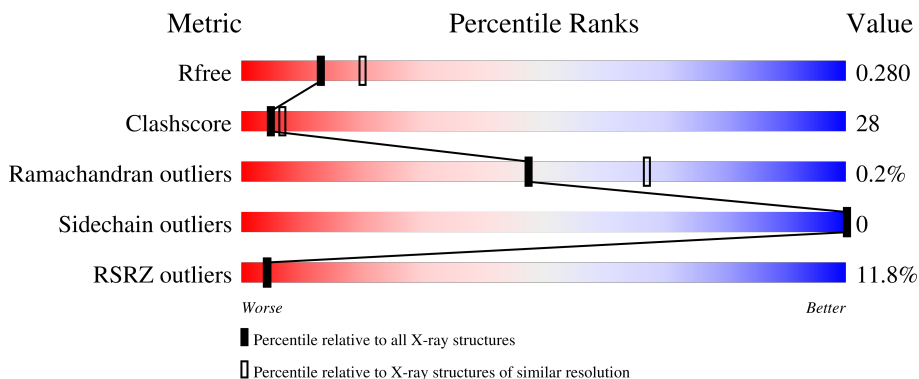
1 Overall quality at a glance

The following experimental techniques were used to determine the structure:

X-RAY DIFFRACTION

The reported resolution of this entry is 2.53 Å.

Percentile scores (ranging between 0-100) for global validation metrics of the entry are shown in the following graphic. The table shows the number of entries on which the scores are based.



Metric	Whole archive (#Entries)	Similar resolution (#Entries, resolution range(Å))
R_{free}	130704	5743 (2.54-2.50)
Clashscore	141614	6463 (2.54-2.50)
Ramachandran outliers	138981	6335 (2.54-2.50)
Sidechain outliers	138945	6337 (2.54-2.50)
RSRZ outliers	127900	5630 (2.54-2.50)

The table below summarises the geometric issues observed across the polymeric chains and their fit to the electron density. The red, orange, yellow and green segments of the lower bar indicate the fraction of residues that contain outliers for ≥ 3 , 2, 1 and 0 types of geometric quality criteria respectively. A grey segment represents the fraction of residues that are not modelled. The numeric value for each fraction is indicated below the corresponding segment, with a dot representing fractions $\leq 5\%$. The upper red bar (where present) indicates the fraction of residues that have poor fit to the electron density. The numeric value is given above the bar.

Mol	Chain	Length	Quality of chain
1	A	535	

2 Entry composition [i](#)

There are 3 unique types of molecules in this entry. The entry contains 3819 atoms, of which 0 are hydrogens and 0 are deuteriums.

In the tables below, the ZeroOcc column contains the number of atoms modelled with zero occupancy, the AltConf column contains the number of residues with at least one atom in alternate conformation and the Trace column contains the number of residues modelled with at most 2 atoms.

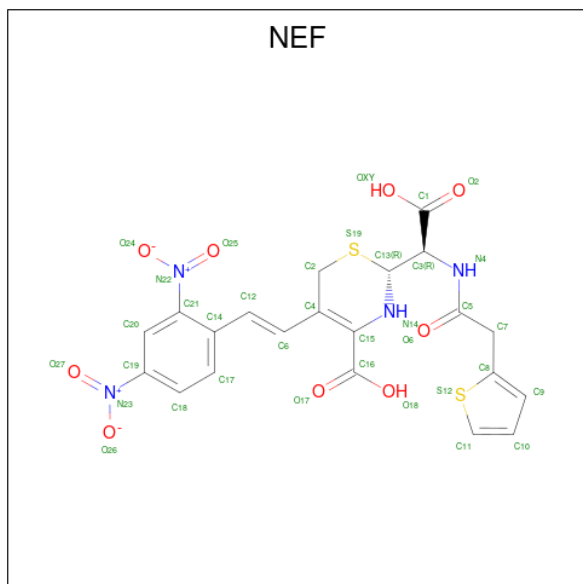
- Molecule 1 is a protein called Peptidoglycan D,D-transpeptidase FtsI.

Mol	Chain	Residues	Atoms					ZeroOcc	AltConf	Trace
			Total	C	N	O	S			
1	A	492	3764	2373	684	695	12	0	1	0

There are 5 discrepancies between the modelled and reference sequences:

Chain	Residue	Modelled	Actual	Comment	Reference
A	45	GLY	-	expression tag	UNP G3XD46
A	46	TYR	-	expression tag	UNP G3XD46
A	47	GLN	-	expression tag	UNP G3XD46
A	48	ASP	-	expression tag	UNP G3XD46
A	49	PRO	-	expression tag	UNP G3XD46

- Molecule 2 is Nitrocefin - open form (three-letter code: NEF) (formula: $C_{21}H_{18}N_4O_9S_2$) (labeled as "Ligand of Interest" by depositor).



Mol	Chain	Residues	Atoms					ZeroOcc	AltConf
			Total	C	N	O	S		
2	A	1	35	21	4	8	2	0	0

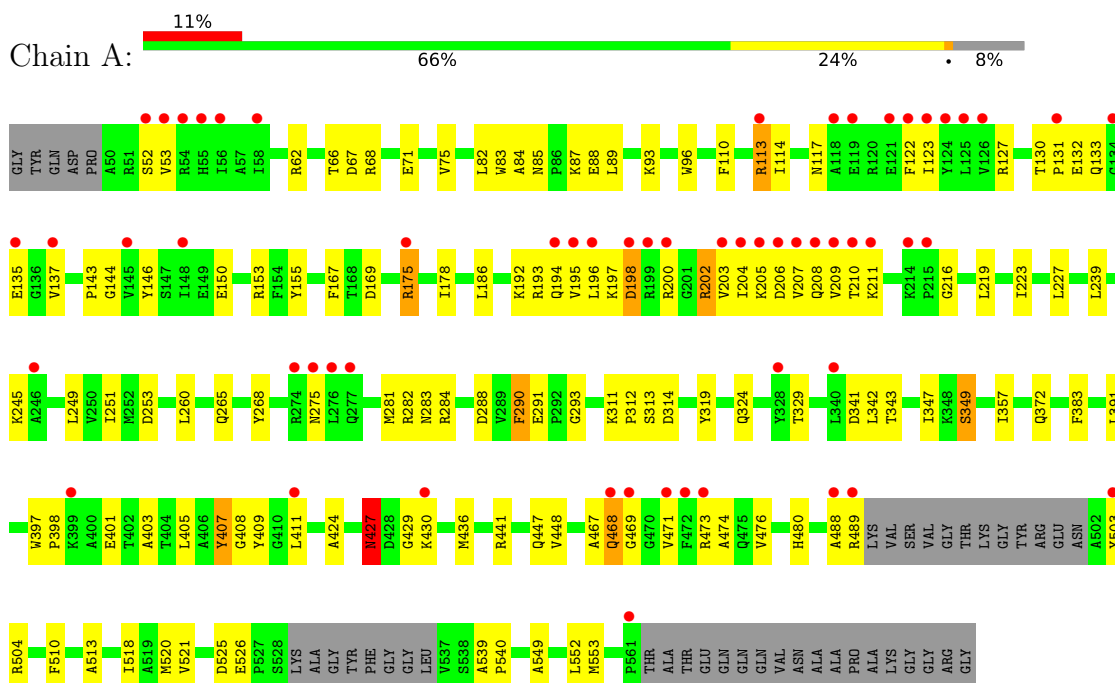
- Molecule 3 is water.

Mol	Chain	Residues	Atoms		ZeroOcc	AltConf
3	A	20	Total	O	0	0
			20	20		

3 Residue-property plots

These plots are drawn for all protein, RNA, DNA and oligosaccharide chains in the entry. The first graphic for a chain summarises the proportions of the various outlier classes displayed in the second graphic. The second graphic shows the sequence view annotated by issues in geometry and electron density. Residues are color-coded according to the number of geometric quality criteria for which they contain at least one outlier: green = 0, yellow = 1, orange = 2 and red = 3 or more. A red dot above a residue indicates a poor fit to the electron density ($RSRZ > 2$). Stretches of 2 or more consecutive residues without any outlier are shown as a green connector. Residues present in the sample, but not in the model, are shown in grey.

- Molecule 1: Peptidoglycan D,D-transpeptidase FtsI



4 Data and refinement statistics

Property	Value	Source
Space group	P 21 21 21	Depositor
Cell constants a, b, c, α , β , γ	68.68Å 83.27Å 89.10Å 90.00° 90.00° 90.00°	Depositor
Resolution (Å)	45.54 – 2.53 44.55 – 2.53	Depositor EDS
% Data completeness (in resolution range)	97.8 (45.54-2.53) 98.3 (44.55-2.53)	Depositor EDS
R_{merge}	(Not available)	Depositor
R_{sym}	(Not available)	Depositor
$\langle I/\sigma(I) \rangle$ ¹	2.02 (at 2.54Å)	Xtrriage
Refinement program	PHENIX 1.17.1_3660	Depositor
R, R_{free}	0.228 , 0.286 0.246 , 0.280	Depositor DCC
R_{free} test set	818 reflections (4.73%)	wwPDB-VP
Wilson B-factor (Å ²)	45.0	Xtrriage
Anisotropy	0.282	Xtrriage
Bulk solvent k_{sol} (e/Å ³), B_{sol} (Å ²)	(Not available) , (Not available)	EDS
L-test for twinning ²	$\langle L \rangle = 0.49$, $\langle L^2 \rangle = 0.33$	Xtrriage
Estimated twinning fraction	No twinning to report.	Xtrriage
F_o, F_c correlation	0.91	EDS
Total number of atoms	3819	wwPDB-VP
Average B, all atoms (Å ²)	56.0	wwPDB-VP

Xtrriage's analysis on translational NCS is as follows: *The largest off-origin peak in the Patterson function is 5.68% of the height of the origin peak. No significant pseudotranslation is detected.*

¹Intensities estimated from amplitudes.

²Theoretical values of $\langle |L| \rangle$, $\langle L^2 \rangle$ for acentric reflections are 0.5, 0.333 respectively for untwinned datasets, and 0.375, 0.2 for perfectly twinned datasets.

5 Model quality i

5.1 Standard geometry i

Bond lengths and bond angles in the following residue types are not validated in this section: NEF

The Z score for a bond length (or angle) is the number of standard deviations the observed value is removed from the expected value. A bond length (or angle) with $|Z| > 5$ is considered an outlier worth inspection. RMSZ is the root-mean-square of all Z scores of the bond lengths (or angles).

Mol	Chain	Bond lengths		Bond angles	
		RMSZ	# Z >5	RMSZ	# Z >5
1	A	0.73	7/3836 (0.2%)	0.91	13/5205 (0.2%)

Chiral center outliers are detected by calculating the chiral volume of a chiral center and verifying if the center is modelled as a planar moiety or with the opposite hand. A planarity outlier is detected by checking planarity of atoms in a peptide group, atoms in a mainchain group or atoms of a sidechain that are expected to be planar.

Mol	Chain	#Chirality outliers	#Planarity outliers
1	A	0	4

All (7) bond length outliers are listed below:

Mol	Chain	Res	Type	Atoms	Z	Observed(Å)	Ideal(Å)
1	A	476	VAL	C-N	8.37	1.50	1.34
1	A	397	TRP	C-N	8.09	1.49	1.34
1	A	319	TYR	C-N	7.74	1.49	1.34
1	A	113	ARG	CZ-NH1	7.60	1.43	1.33
1	A	113	ARG	CG-CD	6.75	1.68	1.51
1	A	427	ASN	C-O	-6.19	1.11	1.23
1	A	424	ALA	C-O	-5.21	1.13	1.23

All (13) bond angle outliers are listed below:

Mol	Chain	Res	Type	Atoms	Z	Observed(°)	Ideal(°)
1	A	113	ARG	CB-CG-CD	-9.71	86.36	111.60
1	A	175	ARG	NE-CZ-NH1	8.70	124.65	120.30
1	A	198	ASP	CB-CA-C	7.33	125.06	110.40
1	A	113	ARG	CA-CB-CG	6.97	128.72	113.40
1	A	175	ARG	NE-CZ-NH2	-6.93	116.83	120.30
1	A	275	ASN	CB-CA-C	6.76	123.93	110.40

Continued on next page...

Continued from previous page...

Mol	Chain	Res	Type	Atoms	Z	Observed(°)	Ideal(°)
1	A	469	GLY	C-N-CA	6.46	135.86	122.30
1	A	525	ASP	CB-CA-C	-6.11	98.18	110.40
1	A	113	ARG	CD-NE-CZ	5.94	131.92	123.60
1	A	290	PHE	C-N-CA	-5.79	107.22	121.70
1	A	202	ARG	NE-CZ-NH2	-5.65	117.47	120.30
1	A	175	ARG	CA-CB-CG	5.27	125.00	113.40
1	A	407	TYR	CB-CA-C	5.00	120.40	110.40

There are no chirality outliers.

All (4) planarity outliers are listed below:

Mol	Chain	Res	Type	Group
1	A	132	GLU	Mainchain
1	A	349[A]	SER	Mainchain
1	A	427	ASN	Mainchain
1	A	468	GLN	Mainchain

5.2 Too-close contacts [i](#)

In the following table, the Non-H and H(model) columns list the number of non-hydrogen atoms and hydrogen atoms in the chain respectively. The H(added) column lists the number of hydrogen atoms added and optimized by MolProbity. The Clashes column lists the number of clashes within the asymmetric unit, whereas Symm-Clashes lists symmetry-related clashes.

Mol	Chain	Non-H	H(model)	H(added)	Clashes	Symm-Clashes
1	A	3764	0	3815	209	0
2	A	35	0	0	1	0
3	A	20	0	0	2	0
All	All	3819	0	3815	210	0

The all-atom clashscore is defined as the number of clashes found per 1000 atoms (including hydrogen atoms). The all-atom clashscore for this structure is 28.

All (210) close contacts within the same asymmetric unit are listed below, sorted by their clash magnitude.

Atom-1	Atom-2	Interatomic distance (Å)	Clash overlap (Å)
1:A:473:ARG:HD2	1:A:540:PRO:CG	1.16	1.62
1:A:52:SER:OG	1:A:197:LYS:CB	1.65	1.43
1:A:52:SER:OG	1:A:197:LYS:CD	1.72	1.35

Continued on next page...

Continued from previous page...

Atom-1	Atom-2	Interatomic distance (Å)	Clash overlap (Å)
1:A:473:ARG:CD	1:A:540:PRO:CG	2.04	1.34
1:A:85:ASN:ND2	1:A:200:ARG:O	1.58	1.33
1:A:169:ASP:HB3	1:A:175:ARG:CD	1.56	1.32
1:A:169:ASP:HB2	1:A:175:ARG:CZ	1.60	1.28
1:A:169:ASP:CB	1:A:175:ARG:NE	1.96	1.27
1:A:473:ARG:HD2	1:A:540:PRO:CD	1.64	1.27
1:A:110:PHE:O	1:A:113:ARG:HG2	1.37	1.23
1:A:195:VAL:CG1	1:A:203:VAL:HG13	1.67	1.22
1:A:473:ARG:CD	1:A:540:PRO:HG3	1.63	1.21
1:A:169:ASP:CB	1:A:175:ARG:CZ	2.20	1.19
1:A:195:VAL:CG2	1:A:206:ASP:OD1	1.90	1.19
1:A:52:SER:OG	1:A:197:LYS:CG	1.94	1.16
1:A:195:VAL:HG22	1:A:206:ASP:OD1	0.98	1.16
1:A:196:LEU:HD11	1:A:205:LYS:HE2	1.29	1.15
1:A:198:ASP:OD1	1:A:204:ILE:HD11	1.43	1.15
1:A:391:LEU:HD12	1:A:411:LEU:CD2	1.77	1.15
1:A:88:GLU:OE1	1:A:144:GLY:HA2	1.44	1.14
1:A:169:ASP:OD2	1:A:175:ARG:NE	1.81	1.13
1:A:239:LEU:HD11	1:A:265:GLN:CB	1.78	1.13
1:A:239:LEU:CD1	1:A:265:GLN:HG3	1.78	1.13
1:A:391:LEU:HD12	1:A:411:LEU:HD22	1.32	1.12
1:A:52:SER:OG	1:A:197:LYS:HB2	1.41	1.12
1:A:405:LEU:CD1	1:A:411:LEU:HD11	1.82	1.10
1:A:473:ARG:HD2	1:A:540:PRO:HG2	1.34	1.08
1:A:52:SER:OG	1:A:197:LYS:HD2	1.55	1.07
1:A:169:ASP:HB3	1:A:175:ARG:HD2	1.16	1.06
1:A:169:ASP:HB3	1:A:175:ARG:NE	1.62	1.06
1:A:195:VAL:HG11	1:A:203:VAL:CG1	1.86	1.06
1:A:391:LEU:HA	1:A:411:LEU:HD22	1.11	1.06
1:A:239:LEU:HD11	1:A:265:GLN:HB2	1.34	1.05
1:A:87:LYS:HB3	1:A:200:ARG:HD3	1.33	1.04
1:A:391:LEU:CD1	1:A:411:LEU:HD13	1.88	1.04
1:A:405:LEU:CD1	1:A:411:LEU:CD1	2.36	1.03
1:A:473:ARG:HD2	1:A:540:PRO:HG3	1.08	1.03
1:A:474:ALA:HB2	1:A:539:ALA:HB1	1.42	1.02
1:A:195:VAL:HG11	1:A:203:VAL:HG13	1.05	1.02
1:A:473:ARG:CG	1:A:540:PRO:HG3	1.89	1.01
1:A:239:LEU:HD12	1:A:265:GLN:HG3	1.38	1.01
1:A:239:LEU:CD1	1:A:265:GLN:CB	2.39	1.00
1:A:488:ALA:O	1:A:504:ARG:N	1.93	0.99
1:A:169:ASP:CG	1:A:175:ARG:NE	2.17	0.97

Continued on next page...

Continued from previous page...

Atom-1	Atom-2	Interatomic distance (Å)	Clash overlap (Å)
1:A:239:LEU:HD11	1:A:265:GLN:CG	1.93	0.97
1:A:239:LEU:CD1	1:A:265:GLN:CG	2.43	0.97
1:A:52:SER:OG	1:A:197:LYS:HB3	1.66	0.94
1:A:196:LEU:CD1	1:A:205:LYS:HE2	1.98	0.93
1:A:110:PHE:O	1:A:113:ARG:CG	2.17	0.92
1:A:169:ASP:HB2	1:A:175:ARG:NH1	1.84	0.92
1:A:196:LEU:HD11	1:A:205:LYS:CE	2.01	0.91
1:A:194:GLN:HG3	1:A:210:THR:CG2	2.00	0.91
1:A:169:ASP:CB	1:A:175:ARG:CD	2.45	0.90
1:A:52:SER:OG	1:A:197:LYS:HD3	1.70	0.90
1:A:110:PHE:C	1:A:113:ARG:HG2	1.92	0.89
1:A:391:LEU:CD1	1:A:411:LEU:CD1	2.51	0.89
1:A:245:LYS:HD2	1:A:526:GLU:OE1	1.74	0.87
1:A:391:LEU:CA	1:A:411:LEU:HD22	2.02	0.86
1:A:194:GLN:HG3	1:A:210:THR:HG23	1.56	0.86
1:A:52:SER:CB	1:A:197:LYS:HD3	2.05	0.86
1:A:405:LEU:HD13	1:A:411:LEU:HD11	1.57	0.85
1:A:117:ASN:ND2	1:A:123:ILE:HD13	1.91	0.85
1:A:239:LEU:HD11	1:A:265:GLN:HG3	1.54	0.85
1:A:405:LEU:HD11	1:A:411:LEU:HD11	1.58	0.84
1:A:52:SER:CB	1:A:197:LYS:CD	2.55	0.83
1:A:473:ARG:CD	1:A:540:PRO:HG2	1.96	0.83
1:A:391:LEU:HA	1:A:411:LEU:CD2	1.98	0.81
1:A:473:ARG:HD2	1:A:540:PRO:HD3	1.60	0.81
1:A:198:ASP:OD1	1:A:204:ILE:CD1	2.28	0.79
1:A:87:LYS:HB3	1:A:200:ARG:CD	2.10	0.79
1:A:87:LYS:CB	1:A:200:ARG:HB3	2.14	0.78
1:A:195:VAL:HG12	1:A:196:LEU:N	1.96	0.77
1:A:391:LEU:CD1	1:A:411:LEU:HD22	2.12	0.77
1:A:405:LEU:CD1	1:A:411:LEU:HD12	2.15	0.77
1:A:198:ASP:CG	1:A:204:ILE:HD11	2.05	0.77
1:A:110:PHE:CA	1:A:113:ARG:HG2	2.15	0.77
1:A:110:PHE:HA	1:A:113:ARG:HG2	1.68	0.76
1:A:195:VAL:HG12	1:A:196:LEU:H	1.50	0.76
1:A:117:ASN:HB3	1:A:123:ILE:HD11	1.68	0.75
1:A:391:LEU:HD13	1:A:411:LEU:HD13	1.68	0.75
1:A:195:VAL:CG1	1:A:203:VAL:CG1	2.56	0.75
1:A:117:ASN:HD22	1:A:123:ILE:HD13	1.52	0.74
1:A:195:VAL:HG13	1:A:205:LYS:O	1.87	0.74
1:A:52:SER:HB3	1:A:197:LYS:HD3	1.69	0.72
1:A:473:ARG:CD	1:A:540:PRO:CD	2.53	0.72

Continued on next page...

Continued from previous page...

Atom-1	Atom-2	Interatomic distance (Å)	Clash overlap (Å)
1:A:198:ASP:HB2	1:A:202:ARG:HB2	1.71	0.72
1:A:117:ASN:CB	1:A:123:ILE:HD11	2.22	0.70
1:A:405:LEU:HD12	1:A:411:LEU:HD12	1.72	0.70
1:A:473:ARG:HG2	1:A:540:PRO:HG3	1.73	0.70
1:A:239:LEU:CD1	1:A:265:GLN:HB2	2.13	0.70
1:A:473:ARG:CD	1:A:540:PRO:HD3	2.22	0.69
1:A:87:LYS:HB2	1:A:200:ARG:HB3	1.73	0.69
1:A:430:LYS:CG	1:A:447:GLN:OE1	2.42	0.68
1:A:391:LEU:HD12	1:A:411:LEU:CD1	2.24	0.68
1:A:117:ASN:ND2	1:A:123:ILE:CD1	2.56	0.68
1:A:441:ARG:HH11	1:A:441:ARG:HB3	1.59	0.67
1:A:195:VAL:CG1	1:A:196:LEU:H	2.07	0.66
1:A:405:LEU:HD11	1:A:411:LEU:CD1	2.16	0.66
1:A:87:LYS:HB3	1:A:200:ARG:HB3	1.77	0.66
1:A:85:ASN:ND2	1:A:88:GLU:HG3	2.11	0.65
1:A:342:LEU:HD22	1:A:357:ILE:HD11	1.78	0.65
1:A:194:GLN:HG3	1:A:210:THR:HG21	1.76	0.65
1:A:110:PHE:HA	1:A:113:ARG:CG	2.27	0.65
1:A:195:VAL:CG1	1:A:196:LEU:N	2.61	0.63
1:A:239:LEU:CD1	1:A:265:GLN:HB3	2.28	0.63
1:A:207:VAL:O	1:A:208:GLN:HG3	1.98	0.63
1:A:430:LYS:HG2	1:A:447:GLN:OE1	1.99	0.62
1:A:194:GLN:O	1:A:206:ASP:HA	1.99	0.62
1:A:284:ARG:HG2	1:A:284:ARG:HH11	1.65	0.62
1:A:391:LEU:HD12	1:A:411:LEU:HD21	1.74	0.61
1:A:196:LEU:HB2	1:A:204:ILE:HB	1.83	0.61
1:A:53:VAL:HG12	1:A:53:VAL:O	2.01	0.61
1:A:131:PRO:O	1:A:135:GLU:HG3	2.00	0.61
1:A:489:ARG:C	1:A:503:TYR:HA	2.20	0.61
1:A:343:THR:HG22	1:A:347:ILE:HD12	1.83	0.60
1:A:391:LEU:HD11	1:A:411:LEU:HD13	1.81	0.60
1:A:441:ARG:HB3	1:A:441:ARG:NH1	2.17	0.59
1:A:239:LEU:HD12	1:A:265:GLN:CG	2.19	0.59
1:A:155:TYR:OH	1:A:167:PHE:HA	2.03	0.59
1:A:405:LEU:HD12	1:A:411:LEU:CD1	2.27	0.58
1:A:227:LEU:HD23	1:A:552:LEU:HD12	1.85	0.58
1:A:268:TYR:CE1	1:A:281:MET:HA	2.39	0.57
1:A:391:LEU:HD11	1:A:411:LEU:CD1	2.32	0.57
1:A:197:LYS:O	1:A:198:ASP:OD1	2.24	0.56
1:A:117:ASN:CB	1:A:123:ILE:CD1	2.84	0.56
1:A:89:LEU:HD23	1:A:143:PRO:O	2.06	0.56

Continued on next page...

Continued from previous page...

Atom-1	Atom-2	Interatomic distance (Å)	Clash overlap (Å)
1:A:284:ARG:HG2	1:A:288:ASP:OD2	2.05	0.56
1:A:67:ASP:HB2	1:A:223:ILE:O	2.06	0.55
1:A:82:LEU:HD13	1:A:137:VAL:HG11	1.88	0.55
1:A:291:GLU:OE1	1:A:409:TYR:HD1	1.89	0.55
1:A:52:SER:CB	1:A:197:LYS:HD2	2.28	0.55
1:A:186:LEU:O	1:A:216:GLY:HA3	2.07	0.54
1:A:403:ALA:O	1:A:407:TYR:CD2	2.61	0.53
1:A:85:ASN:HD22	1:A:88:GLU:HG3	1.71	0.53
1:A:473:ARG:HD3	1:A:540:PRO:HG2	1.84	0.53
1:A:282:ARG:HD2	1:A:284:ARG:CZ	2.38	0.53
1:A:489:ARG:HA	1:A:503:TYR:HA	1.91	0.53
2:A:1101:NEF:C2	2:A:1101:NEF:N4	2.72	0.52
1:A:196:LEU:HD12	1:A:205:LYS:CG	2.38	0.52
1:A:197:LYS:HG2	1:A:198:ASP:N	2.24	0.52
1:A:68:ARG:HG3	1:A:223:ILE:O	2.10	0.52
1:A:83:TRP:CE2	1:A:146:TYR:HB2	2.45	0.52
1:A:430:LYS:CE	1:A:447:GLN:OE1	2.58	0.51
1:A:398:PRO:HD2	1:A:401:GLU:HB2	1.91	0.51
1:A:253:ASP:HB2	1:A:260:LEU:HD11	1.92	0.51
1:A:239:LEU:HD13	1:A:265:GLN:HB3	1.93	0.50
1:A:343:THR:HG22	1:A:347:ILE:CD1	2.41	0.50
1:A:467:ALA:O	1:A:468:GLN:HG3	2.11	0.50
1:A:87:LYS:HD3	1:A:200:ARG:HG2	1.93	0.50
1:A:83:TRP:NE1	1:A:146:TYR:HB2	2.27	0.50
1:A:227:LEU:HD12	1:A:260:LEU:HB3	1.94	0.50
1:A:178:ILE:HD11	1:A:436:MET:HG2	1.94	0.49
1:A:193:ARG:HD3	1:A:206:ASP:OD2	2.13	0.49
1:A:489:ARG:CA	1:A:503:TYR:HA	2.43	0.49
1:A:117:ASN:CG	1:A:123:ILE:HD11	2.32	0.49
1:A:169:ASP:CB	1:A:175:ARG:NH1	2.60	0.49
1:A:518:ILE:HD11	1:A:553:MET:SD	2.52	0.49
1:A:192:LYS:H	1:A:211:LYS:HB2	1.78	0.48
1:A:194:GLN:CG	1:A:210:THR:HG21	2.41	0.48
1:A:284:ARG:HG2	1:A:284:ARG:NH1	2.26	0.48
1:A:122:PHE:O	1:A:123:ILE:HG13	2.14	0.48
1:A:324:GLN:HG2	1:A:329:THR:OG1	2.14	0.47
1:A:75:VAL:N	1:A:153:ARG:HD2	2.30	0.47
1:A:87:LYS:HB3	1:A:200:ARG:CB	2.42	0.47
1:A:430:LYS:HG3	1:A:447:GLN:OE1	2.14	0.47
1:A:473:ARG:NE	1:A:540:PRO:HD3	2.29	0.47
1:A:196:LEU:HD12	1:A:205:LYS:HG2	1.97	0.47

Continued on next page...

Continued from previous page...

Atom-1	Atom-2	Interatomic distance (Å)	Clash overlap (Å)
1:A:311:LYS:HE2	1:A:313:SER:OG	2.15	0.47
1:A:169:ASP:CG	1:A:175:ARG:CZ	2.74	0.47
1:A:314:ASP:O	1:A:341:ASP:HA	2.15	0.46
1:A:169:ASP:OD2	1:A:175:ARG:CZ	2.58	0.46
1:A:209:VAL:HG12	1:A:209:VAL:O	2.15	0.46
1:A:290:PHE:HB2	1:A:504:ARG:NH1	2.30	0.46
1:A:93:LYS:HG2	1:A:96:TRP:CZ2	2.51	0.46
1:A:87:LYS:HB3	1:A:200:ARG:CG	2.46	0.45
1:A:130:THR:O	1:A:133:GLN:N	2.49	0.45
1:A:251:ILE:HG12	1:A:520:MET:HE2	1.99	0.45
1:A:110:PHE:HA	1:A:113:ARG:CD	2.46	0.45
1:A:227:LEU:HD22	1:A:549:ALA:HA	1.97	0.45
1:A:127:ARG:NH2	1:A:150:GLU:OE2	2.44	0.45
1:A:84:ALA:HA	1:A:144:GLY:O	2.17	0.45
1:A:245:LYS:CD	1:A:526:GLU:OE1	2.55	0.45
1:A:293:GLY:CA	1:A:408:GLY:HA3	2.46	0.45
1:A:249:LEU:HA	1:A:521:VAL:O	2.16	0.45
1:A:88:GLU:OE2	1:A:146:TYR:OH	2.27	0.44
1:A:207:VAL:O	1:A:208:GLN:CG	2.64	0.44
1:A:405:LEU:HD13	1:A:411:LEU:CD1	2.28	0.44
1:A:195:VAL:HA	1:A:205:LYS:O	2.17	0.44
1:A:480:HIS:O	1:A:513:ALA:N	2.50	0.44
1:A:196:LEU:CD1	1:A:205:LYS:CE	2.78	0.43
1:A:510:PHE:HA	1:A:518:ILE:O	2.18	0.43
1:A:312:PRO:HD2	3:A:1207:HOH:O	2.18	0.43
1:A:153:ARG:HG2	1:A:155:TYR:CZ	2.54	0.43
1:A:251:ILE:HG23	1:A:518:ILE:HG23	2.00	0.42
1:A:427:ASN:O	1:A:429:GLY:N	2.52	0.42
1:A:283:ASN:HD22	1:A:383:PHE:HE2	1.67	0.42
1:A:198:ASP:CB	1:A:202:ARG:HB2	2.46	0.42
1:A:89:LEU:HD12	1:A:114:ILE:HD12	2.02	0.41
1:A:473:ARG:HE	1:A:540:PRO:HD3	1.85	0.41
1:A:62:ARG:HG2	1:A:153:ARG:NH2	2.36	0.41
1:A:66:THR:HA	1:A:71:GLU:O	2.19	0.41
1:A:372:GLN:HB3	1:A:448:VAL:HB	2.02	0.41
1:A:52:SER:H	1:A:197:LYS:HB3	1.84	0.41
1:A:207:VAL:C	1:A:208:GLN:HG3	2.40	0.41
1:A:198:ASP:OD2	1:A:204:ILE:CG1	2.69	0.40
1:A:117:ASN:HD22	1:A:123:ILE:CD1	2.24	0.40
1:A:219:LEU:HD12	1:A:219:LEU:HA	1.86	0.40
1:A:349[B]:SER:OG	3:A:1201:HOH:O	2.04	0.40

Continued on next page...

Continued from previous page...

Atom-1	Atom-2	Interatomic distance (Å)	Clash overlap (Å)
1:A:52:SER:N	1:A:197:LYS:HB3	2.36	0.40
1:A:117:ASN:CG	1:A:123:ILE:CD1	2.88	0.40

There are no symmetry-related clashes.

5.3 Torsion angles [i](#)

5.3.1 Protein backbone [i](#)

In the following table, the Percentiles column shows the percent Ramachandran outliers of the chain as a percentile score with respect to all X-ray entries followed by that with respect to entries of similar resolution.

The Analysed column shows the number of residues for which the backbone conformation was analysed, and the total number of residues.

Mol	Chain	Analysed	Favoured	Allowed	Outliers	Percentiles
1	A	487/535 (91%)	465 (96%)	21 (4%)	1 (0%)	47 67

All (1) Ramachandran outliers are listed below:

Mol	Chain	Res	Type
1	A	471	VAL

5.3.2 Protein sidechains [i](#)

In the following table, the Percentiles column shows the percent sidechain outliers of the chain as a percentile score with respect to all X-ray entries followed by that with respect to entries of similar resolution.

The Analysed column shows the number of residues for which the sidechain conformation was analysed, and the total number of residues.

Mol	Chain	Analysed	Rotameric	Outliers	Percentiles
1	A	395/423 (93%)	395 (100%)	0	100 100

There are no protein residues with a non-rotameric sidechain to report.

Sometimes sidechains can be flipped to improve hydrogen bonding and reduce clashes. All (1) such sidechains are listed below:

Mol	Chain	Res	Type
1	A	117	ASN

5.3.3 RNA [i](#)

There are no RNA molecules in this entry.

5.4 Non-standard residues in protein, DNA, RNA chains [i](#)

There are no non-standard protein/DNA/RNA residues in this entry.

5.5 Carbohydrates [i](#)

There are no monosaccharides in this entry.

5.6 Ligand geometry [i](#)

1 ligand is modelled in this entry.

In the following table, the Counts columns list the number of bonds (or angles) for which Mogul statistics could be retrieved, the number of bonds (or angles) that are observed in the model and the number of bonds (or angles) that are defined in the Chemical Component Dictionary. The Link column lists molecule types, if any, to which the group is linked. The Z score for a bond length (or angle) is the number of standard deviations the observed value is removed from the expected value. A bond length (or angle) with $|Z| > 2$ is considered an outlier worth inspection. RMSZ is the root-mean-square of all Z scores of the bond lengths (or angles).

Mol	Type	Chain	Res	Link	Bond lengths			Bond angles		
					Counts	RMSZ	# $ Z > 2$	Counts	RMSZ	# $ Z > 2$
2	NEF	A	1101	1	30,37,38	1.30	5 (16%)	31,51,53	2.35	9 (29%)

In the following table, the Chirals column lists the number of chiral outliers, the number of chiral centers analysed, the number of these observed in the model and the number defined in the Chemical Component Dictionary. Similar counts are reported in the Torsion and Rings columns. '-' means no outliers of that kind were identified.

Mol	Type	Chain	Res	Link	Chirals	Torsions	Rings
2	NEF	A	1101	1	-	9/19/44/46	0/2/3/3

All (5) bond length outliers are listed below:

Mol	Chain	Res	Type	Atoms	Z	Observed(Å)	Ideal(Å)
2	A	1101	NEF	O18-C16	-3.84	1.19	1.30
2	A	1101	NEF	C8-S12	-2.58	1.68	1.73
2	A	1101	NEF	C15-C16	2.31	1.52	1.48
2	A	1101	NEF	C7-C8	-2.13	1.49	1.51
2	A	1101	NEF	O2-C1	2.06	1.28	1.19

All (9) bond angle outliers are listed below:

Mol	Chain	Res	Type	Atoms	Z	Observed(°)	Ideal(°)
2	A	1101	NEF	C6-C4-C15	6.69	127.56	122.10
2	A	1101	NEF	C3-N4-C5	-4.97	117.80	123.13
2	A	1101	NEF	C13-N14-C15	4.74	129.48	118.32
2	A	1101	NEF	O2-C1-C3	-4.58	112.07	124.83
2	A	1101	NEF	C17-C14-C21	-3.24	115.20	118.92
2	A	1101	NEF	C13-C3-N4	3.01	116.53	109.98
2	A	1101	NEF	O17-C16-C15	-2.65	115.45	120.13
2	A	1101	NEF	C2-C4-C6	-2.62	117.94	120.47
2	A	1101	NEF	C16-C15-C4	2.05	124.84	122.79

There are no chirality outliers.

All (9) torsion outliers are listed below:

Mol	Chain	Res	Type	Atoms
2	A	1101	NEF	C14-C12-C6-C4
2	A	1101	NEF	C6-C12-C14-C21
2	A	1101	NEF	N14-C15-C16-O18
2	A	1101	NEF	C14-C21-N22-O25
2	A	1101	NEF	C20-C21-N22-O25
2	A	1101	NEF	O6-C5-C7-C8
2	A	1101	NEF	N4-C5-C7-C8
2	A	1101	NEF	N14-C15-C16-O17
2	A	1101	NEF	C6-C12-C14-C17

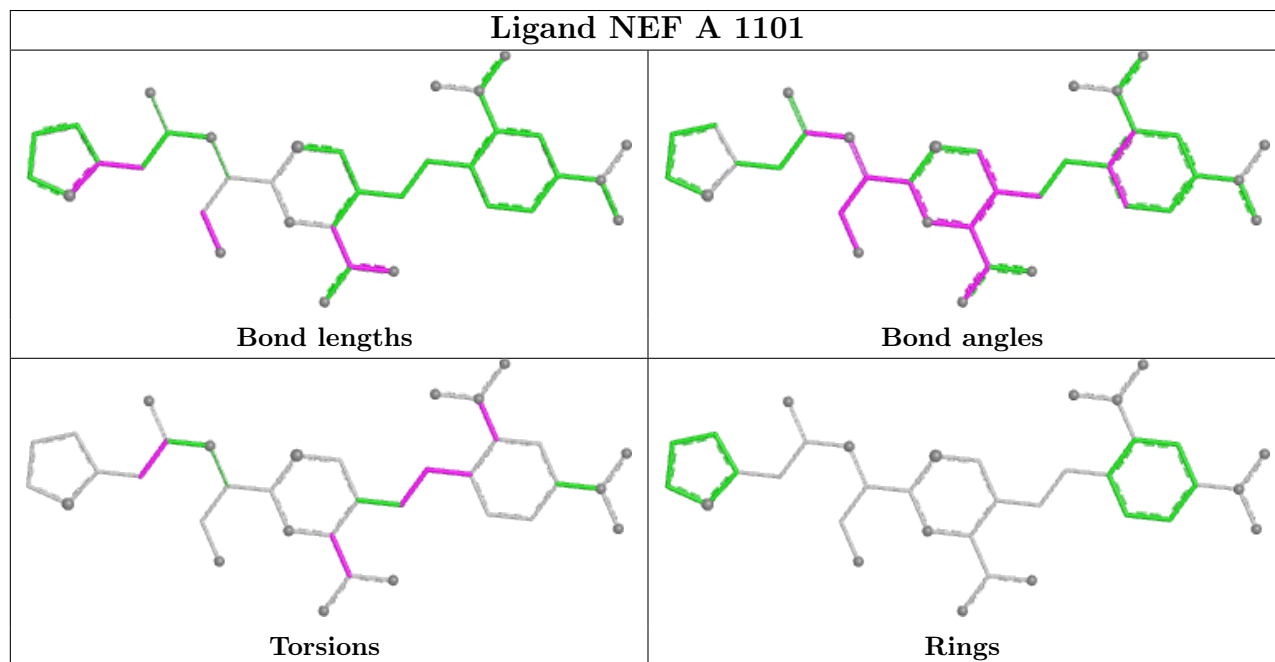
There are no ring outliers.

1 monomer is involved in 1 short contact:

Mol	Chain	Res	Type	Clashes	Symm-Clashes
2	A	1101	NEF	1	0

The following is a two-dimensional graphical depiction of Mogul quality analysis of bond lengths, bond angles, torsion angles, and ring geometry for all instances of the Ligand of Interest. In addition, ligands with molecular weight > 250 and outliers as shown on the validation Tables will

also be included. For torsion angles, if less than 5% of the Mogul distribution of torsion angles is within 10 degrees of the torsion angle in question, then that torsion angle is considered an outlier. Any bond that is central to one or more torsion angles identified as an outlier by Mogul will be highlighted in the graph. For rings, the root-mean-square deviation (RMSD) between the ring in question and similar rings identified by Mogul is calculated over all ring torsion angles. If the average RMSD is greater than 60 degrees and the minimal RMSD between the ring in question and any Mogul-identified rings is also greater than 60 degrees, then that ring is considered an outlier. The outliers are highlighted in purple. The color gray indicates Mogul did not find sufficient equivalents in the CSD to analyse the geometry.



5.7 Other polymers [i](#)

There are no such residues in this entry.

5.8 Polymer linkage issues [i](#)

There are no chain breaks in this entry.

6 Fit of model and data

6.1 Protein, DNA and RNA chains

In the following table, the column labelled ‘#RSRZ> 2’ contains the number (and percentage) of RSRZ outliers, followed by percent RSRZ outliers for the chain as percentile scores relative to all X-ray entries and entries of similar resolution. The OWAB column contains the minimum, median, 95th percentile and maximum values of the occupancy-weighted average B-factor per residue. The column labelled ‘Q< 0.9’ lists the number of (and percentage) of residues with an average occupancy less than 0.9.

Mol	Chain	Analysed	<RSRZ>	#RSRZ>2	OWAB(Å ²)	Q<0.9
1	A	492/535 (91%)	0.75	58 (11%) 4 4	27, 48, 108, 134	0

All (58) RSRZ outliers are listed below:

Mol	Chain	Res	Type	RSRZ
1	A	472	PHE	11.5
1	A	207	VAL	9.7
1	A	468	GLN	8.4
1	A	135	GLU	7.5
1	A	200	ARG	6.5
1	A	210	THR	6.5
1	A	489	ARG	6.4
1	A	473	ARG	6.3
1	A	206	ASP	6.2
1	A	131	PRO	5.9
1	A	471	VAL	5.7
1	A	208	GLN	5.7
1	A	274	ARG	5.6
1	A	175	ARG	5.5
1	A	194	GLN	5.4
1	A	205	LYS	5.2
1	A	148	ILE	5.1
1	A	488	ALA	5.0
1	A	203	VAL	5.0
1	A	195	VAL	4.9
1	A	122	PHE	4.6
1	A	137	VAL	4.5
1	A	198	ASP	4.5
1	A	55	HIS	4.4
1	A	276	LEU	4.4
1	A	126	VAL	4.3
1	A	199	ARG	4.2

Continued on next page...

Continued from previous page...

Mol	Chain	Res	Type	RSRZ
1	A	503	TYR	4.2
1	A	204	ILE	4.0
1	A	275	ASN	3.8
1	A	113	ARG	3.8
1	A	52	SER	3.5
1	A	411	LEU	3.4
1	A	118	ALA	3.4
1	A	277	GLN	3.4
1	A	134	GLY	3.4
1	A	469	GLY	3.4
1	A	53	VAL	3.3
1	A	54	ARG	3.2
1	A	399	LYS	3.2
1	A	561	PRO	3.0
1	A	125	LEU	3.0
1	A	196	LEU	2.9
1	A	56	ILE	2.8
1	A	119	GLU	2.8
1	A	211	LYS	2.7
1	A	214	LYS	2.7
1	A	328	TYR	2.6
1	A	430	LYS	2.5
1	A	123	ILE	2.4
1	A	145	VAL	2.3
1	A	124	TYR	2.3
1	A	121	GLU	2.2
1	A	58	ILE	2.2
1	A	209	VAL	2.2
1	A	340	LEU	2.1
1	A	246	ALA	2.0
1	A	215	PRO	2.0

6.2 Non-standard residues in protein, DNA, RNA chains [i](#)

There are no non-standard protein/DNA/RNA residues in this entry.

6.3 Carbohydrates [i](#)

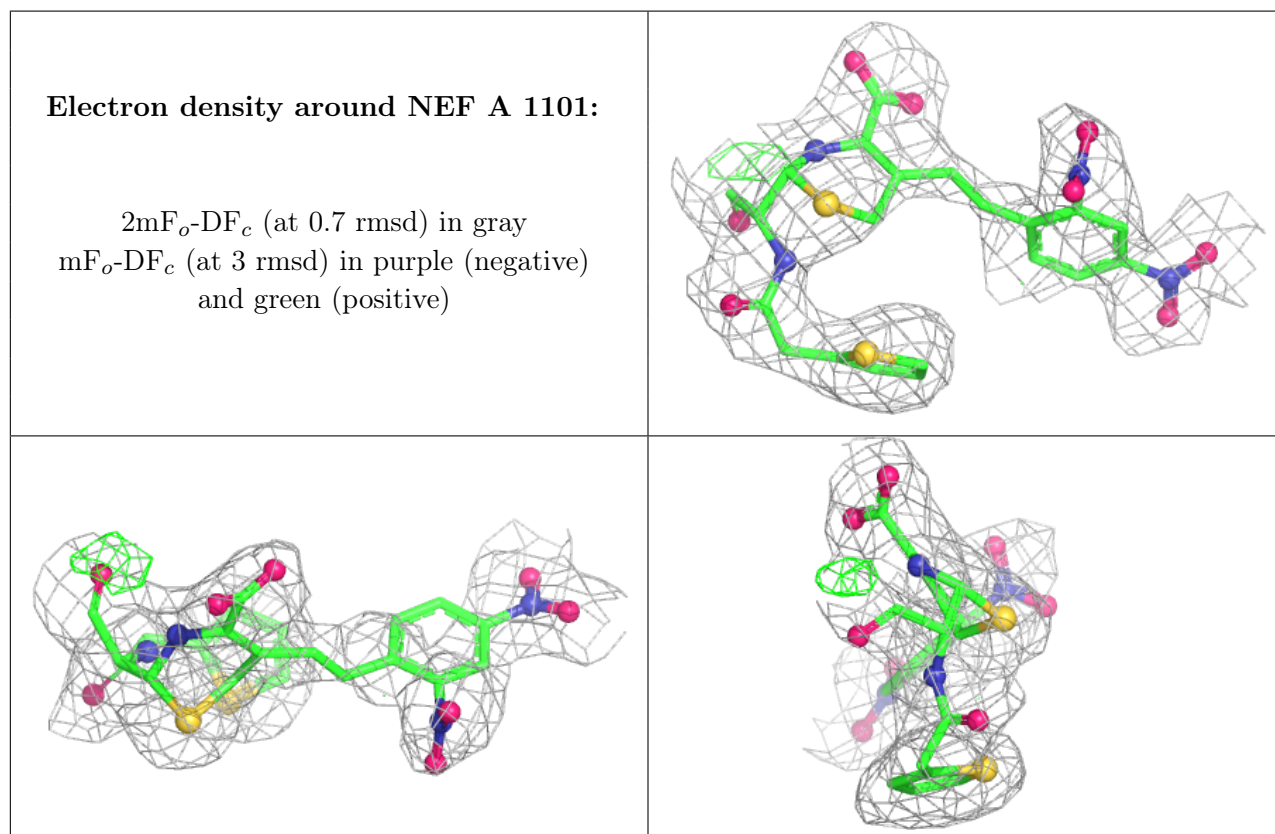
There are no monosaccharides in this entry.

6.4 Ligands [i](#)

In the following table, the Atoms column lists the number of modelled atoms in the group and the number defined in the chemical component dictionary. The B-factors column lists the minimum, median, 95th percentile and maximum values of B factors of atoms in the group. The column labelled 'Q< 0.9' lists the number of atoms with occupancy less than 0.9.

Mol	Type	Chain	Res	Atoms	RSCC	RSR	B-factors(Å ²)	Q<0.9
2	NEF	A	1101	35/36	0.87	0.19	46,64,105,107	0

The following is a graphical depiction of the model fit to experimental electron density of all instances of the Ligand of Interest. In addition, ligands with molecular weight > 250 and outliers as shown on the geometry validation Tables will also be included. Each fit is shown from different orientation to approximate a three-dimensional view.



6.5 Other polymers [i](#)

There are no such residues in this entry.