



Full wwPDB X-ray Structure Validation Report ⓘ

Jul 13, 2022 – 03:21 am BST

PDB ID : 6HR9
Title : Nitrocefin acylation of both catalytic serines of the Y409 mutant of penicillin-binding protein 3 from *P. aeruginosa*
Authors : Bellini, D.; Dowson, C.G.
Deposited on : 2018-09-26
Resolution : 1.99 Å (reported)

This is a Full wwPDB X-ray Structure Validation Report for a publicly released PDB entry.

We welcome your comments at validation@mail.wwpdb.org

A user guide is available at

<https://www.wwpdb.org/validation/2017/XrayValidationReportHelp>

with specific help available everywhere you see the ⓘ symbol.

The types of validation reports are described at <http://www.wwpdb.org/validation/2017/FAQs#types>.

The following versions of software and data (see [references ⓘ](#)) were used in the production of this report:

MolProbity : 4.02b-467
Mogul : 1.8.4, CSD as541be (2020)
Xtrriage (Phenix) : 1.13
EDS : 2.29
buster-report : 1.1.7 (2018)
Percentile statistics : 20191225.v01 (using entries in the PDB archive December 25th 2019)
Refmac : 5.8.0267
CCP4 : 7.1.010 (Gargrove)
Ideal geometry (proteins) : Engh & Huber (2001)
Ideal geometry (DNA, RNA) : Parkinson et al. (1996)
Validation Pipeline (wwPDB-VP) : 2.29

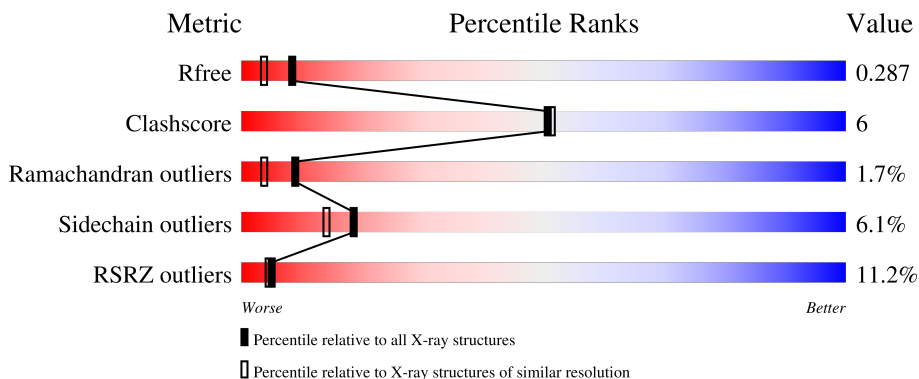
1 Overall quality at a glance

The following experimental techniques were used to determine the structure:

X-RAY DIFFRACTION

The reported resolution of this entry is 1.99 Å.

Percentile scores (ranging between 0-100) for global validation metrics of the entry are shown in the following graphic. The table shows the number of entries on which the scores are based.



Metric	Whole archive (#Entries)	Similar resolution (#Entries, resolution range(Å))
R_{free}	130704	8085 (2.00-2.00)
Clashscore	141614	9178 (2.00-2.00)
Ramachandran outliers	138981	9054 (2.00-2.00)
Sidechain outliers	138945	9053 (2.00-2.00)
RSRZ outliers	127900	7900 (2.00-2.00)

The table below summarises the geometric issues observed across the polymeric chains and their fit to the electron density. The red, orange, yellow and green segments of the lower bar indicate the fraction of residues that contain outliers for ≥ 3 , 2, 1 and 0 types of geometric quality criteria respectively. A grey segment represents the fraction of residues that are not modelled. The numeric value for each fraction is indicated below the corresponding segment, with a dot representing fractions $\leq 5\%$. The upper red bar (where present) indicates the fraction of residues that have poor fit to the electron density. The numeric value is given above the bar.

Mol	Chain	Length	Quality of chain
1	A	535	

2 Entry composition [i](#)

There are 3 unique types of molecules in this entry. The entry contains 3900 atoms, of which 0 are hydrogens and 0 are deuteriums.

In the tables below, the ZeroOcc column contains the number of atoms modelled with zero occupancy, the AltConf column contains the number of residues with at least one atom in alternate conformation and the Trace column contains the number of residues modelled with at most 2 atoms.

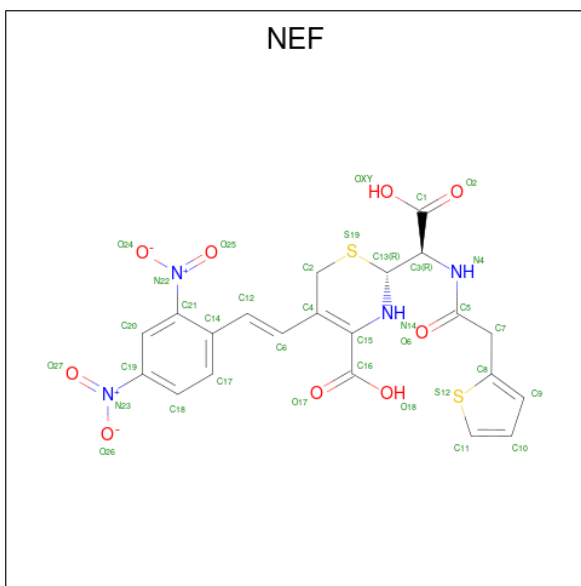
- Molecule 1 is a protein called Peptidoglycan D,D-transpeptidase FtsI.

Mol	Chain	Residues	Atoms					ZeroOcc	AltConf	Trace
			Total	C	N	O	S			
1	A	491	3728	2351	674	691	12	0	0	0

There are 6 discrepancies between the modelled and reference sequences:

Chain	Residue	Modelled	Actual	Comment	Reference
A	45	GLY	-	expression tag	UNP G3XD46
A	46	TYR	-	expression tag	UNP G3XD46
A	47	GLN	-	expression tag	UNP G3XD46
A	48	ASP	-	expression tag	UNP G3XD46
A	49	PRO	-	expression tag	UNP G3XD46
A	409	ALA	TYR	engineered mutation	UNP G3XD46

- Molecule 2 is Nitrocefin - open form (three-letter code: NEF) (formula: $C_{21}H_{18}N_4O_9S_2$) (labeled as "Ligand of Interest" by depositor).



Mol	Chain	Residues	Atoms					ZeroOcc	AltConf
2	A	1	Total	C	N	O	S	0	0
			35	21	4	8	2		
2	A	1	Total	C	N	O	S	0	0
			35	21	4	8	2		

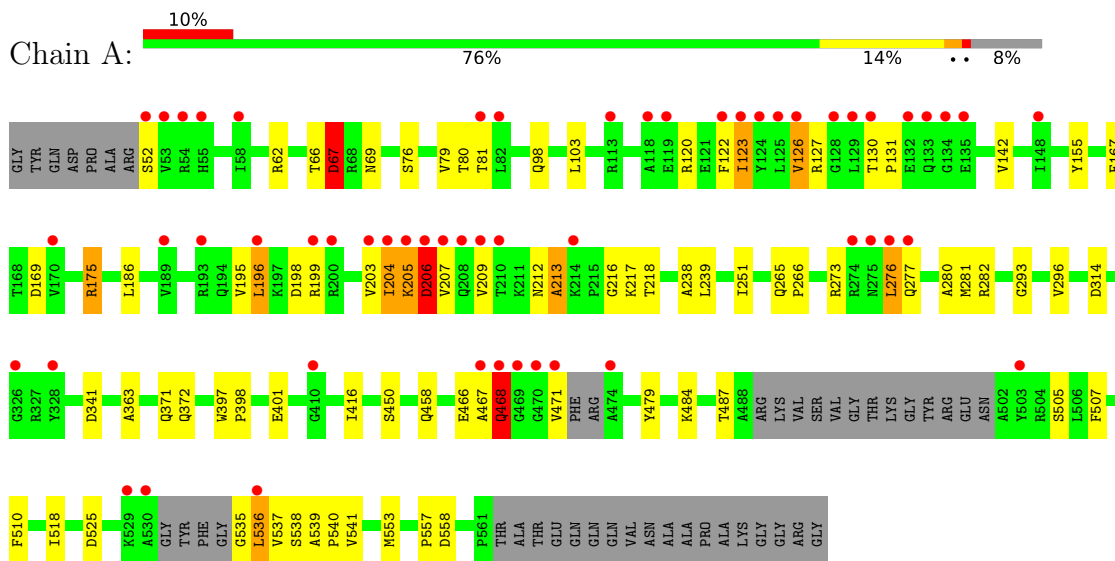
- Molecule 3 is water.

Mol	Chain	Residues	Atoms		ZeroOcc	AltConf
3	A	102	Total	O	0	0
			102	102		

3 Residue-property plots [i](#)

These plots are drawn for all protein, RNA, DNA and oligosaccharide chains in the entry. The first graphic for a chain summarises the proportions of the various outlier classes displayed in the second graphic. The second graphic shows the sequence view annotated by issues in geometry and electron density. Residues are color-coded according to the number of geometric quality criteria for which they contain at least one outlier: green = 0, yellow = 1, orange = 2 and red = 3 or more. A red dot above a residue indicates a poor fit to the electron density ($RSRZ > 2$). Stretches of 2 or more consecutive residues without any outlier are shown as a green connector. Residues present in the sample, but not in the model, are shown in grey.

- Molecule 1: Peptidoglycan D,D-transpeptidase FtsI



4 Data and refinement statistics

Property	Value	Source
Space group	P 21 21 21	Depositor
Cell constants a, b, c, α , β , γ	68.04Å 83.26Å 88.73Å 90.00° 90.00° 90.00°	Depositor
Resolution (Å)	60.72 – 1.99 60.72 – 1.99	Depositor EDS
% Data completeness (in resolution range)	97.5 (60.72-1.99) 97.5 (60.72-1.99)	Depositor EDS
R_{merge}	(Not available)	Depositor
R_{sym}	(Not available)	Depositor
$\langle I/\sigma(I) \rangle$ ¹	1.94 (at 1.98Å)	Xtriage
Refinement program	REFMAC 5.8.0258	Depositor
R, R_{free}	0.222 , 0.281 0.231 , 0.287	Depositor DCC
R_{free} test set	1683 reflections (4.90%)	wwPDB-VP
Wilson B-factor (Å ²)	29.0	Xtriage
Anisotropy	0.163	Xtriage
Bulk solvent k_{sol} (e/Å ³), B_{sol} (Å ²)	(Not available) , (Not available)	EDS
L-test for twinning ²	$\langle L \rangle = 0.49$, $\langle L^2 \rangle = 0.32$	Xtriage
Estimated twinning fraction	No twinning to report.	Xtriage
F_o, F_c correlation	0.94	EDS
Total number of atoms	3900	wwPDB-VP
Average B, all atoms (Å ²)	43.0	wwPDB-VP

Xtriage's analysis on translational NCS is as follows: *The largest off-origin peak in the Patterson function is 5.81% of the height of the origin peak. No significant pseudotranslation is detected.*

¹Intensities estimated from amplitudes.

²Theoretical values of $\langle |L| \rangle$, $\langle L^2 \rangle$ for acentric reflections are 0.5, 0.333 respectively for untwinned datasets, and 0.375, 0.2 for perfectly twinned datasets.

5 Model quality [i](#)

5.1 Standard geometry [i](#)

Bond lengths and bond angles in the following residue types are not validated in this section: NEF

The Z score for a bond length (or angle) is the number of standard deviations the observed value is removed from the expected value. A bond length (or angle) with $|Z| > 5$ is considered an outlier worth inspection. RMSZ is the root-mean-square of all Z scores of the bond lengths (or angles).

Mol	Chain	Bond lengths		Bond angles	
		RMSZ	# Z >5	RMSZ	# Z >5
1	A	0.68	0/3797	0.83	1/5152 (0.0%)

Chiral center outliers are detected by calculating the chiral volume of a chiral center and verifying if the center is modelled as a planar moiety or with the opposite hand. A planarity outlier is detected by checking planarity of atoms in a peptide group, atoms in a mainchain group or atoms of a sidechain that are expected to be planar.

Mol	Chain	#Chirality outliers	#Planarity outliers
1	A	0	1

There are no bond length outliers.

All (1) bond angle outliers are listed below:

Mol	Chain	Res	Type	Atoms	Z	Observed(°)	Ideal(°)
1	A	67	ASP	CB-CA-C	-5.91	98.59	110.40

There are no chirality outliers.

All (1) planarity outliers are listed below:

Mol	Chain	Res	Type	Group
1	A	66	THR	Peptide

5.2 Too-close contacts [i](#)

In the following table, the Non-H and H(model) columns list the number of non-hydrogen atoms and hydrogen atoms in the chain respectively. The H(added) column lists the number of hydrogen atoms added and optimized by MolProbity. The Clashes column lists the number of clashes within the asymmetric unit, whereas Symm-Clashes lists symmetry-related clashes.

Mol	Chain	Non-H	H(model)	H(added)	Clashes	Symm-Clashes
1	A	3728	0	3788	41	0
2	A	70	0	0	4	0
3	A	102	0	0	1	0
All	All	3900	0	3788	43	0

The all-atom clashscore is defined as the number of clashes found per 1000 atoms (including hydrogen atoms). The all-atom clashscore for this structure is 6.

All (43) close contacts within the same asymmetric unit are listed below, sorted by their clash magnitude.

Atom-1	Atom-2	Interatomic distance (Å)	Clash overlap (Å)
1:A:371:GLN:HE22	1:A:372:GLN:HE21	1.17	0.93
1:A:122:PHE:O	1:A:123:ILE:HD12	1.86	0.77
1:A:195:VAL:HG12	1:A:207:VAL:HG22	1.82	0.61
1:A:195:VAL:HG12	1:A:207:VAL:CG2	2.31	0.59
1:A:203:VAL:HG13	1:A:203:VAL:O	2.04	0.58
1:A:196:LEU:CD2	1:A:206:ASP:HB2	2.37	0.55
1:A:487:THR:HG1	1:A:535:GLY:N	2.04	0.55
1:A:98:GLN:HG3	3:A:1347:HOH:O	2.08	0.53
1:A:479:TYR:HA	1:A:558:ASP:OD1	2.08	0.52
1:A:273:ARG:HB3	1:A:276:LEU:HD12	1.92	0.51
2:A:1202:NEF:N22	2:A:1202:NEF:C6	2.71	0.51
1:A:398:PRO:HG2	1:A:401:GLU:OE1	2.12	0.50
1:A:155:TYR:OH	1:A:167:PHE:HA	2.12	0.49
1:A:212:ASN:O	1:A:213:ALA:HB3	2.12	0.48
1:A:52:SER:O	1:A:196:LEU:HA	2.12	0.48
1:A:518:ILE:HD11	1:A:553:MET:SD	2.54	0.47
1:A:169:ASP:HB3	1:A:175:ARG:HG3	1.97	0.46
1:A:79:VAL:HA	1:A:131:PRO:HD3	1.97	0.46
1:A:251:ILE:HG23	1:A:518:ILE:HG23	1.98	0.46
1:A:196:LEU:O	1:A:204:ILE:O	2.34	0.45
1:A:293:GLY:O	1:A:296:VAL:HG22	2.17	0.45
1:A:479:TYR:CE2	1:A:557:PRO:HA	2.51	0.45
1:A:536:LEU:HG	1:A:536:LEU:O	2.16	0.45
1:A:484:LYS:NZ	2:A:1202:NEF:O18	2.46	0.44
1:A:314:ASP:O	1:A:341:ASP:HA	2.18	0.44
1:A:505:SER:CB	1:A:537:VAL:HG22	2.47	0.44
1:A:276:LEU:HD13	1:A:281:MET:SD	2.57	0.44
1:A:62:ARG:HB3	1:A:76:SER:OG	2.18	0.43
1:A:186:LEU:O	1:A:216:GLY:HA3	2.20	0.42
1:A:67:ASP:HB3	1:A:69:ASN:H	1.85	0.42
1:A:81:THR:HG23	1:A:127:ARG:HA	2.01	0.42

Continued on next page...

Continued from previous page...

Atom-1	Atom-2	Interatomic distance (Å)	Clash overlap (Å)
1:A:103:LEU:HD22	1:A:126:VAL:HG22	2.01	0.42
1:A:175:ARG:NH2	1:A:281:MET:HE1	2.35	0.41
1:A:363:ALA:HB3	1:A:397:TRP:CG	2.56	0.41
1:A:266:PRO:HG2	1:A:280:ALA:HA	2.03	0.41
1:A:507:PHE:HB2	1:A:538:SER:HB3	2.03	0.41
1:A:468:GLN:HE21	1:A:468:GLN:HB3	1.66	0.41
1:A:238:ALA:HB2	1:A:541:VAL:HG22	2.01	0.41
1:A:239:LEU:HD22	1:A:265:GLN:CB	2.50	0.41
2:A:1202:NEF:C6	2:A:1202:NEF:O25	2.68	0.41
1:A:539:ALA:N	1:A:540:PRO:CD	2.83	0.40
1:A:471:VAL:HG11	2:A:1202:NEF:S12	2.61	0.40
1:A:458:GLN:HG2	1:A:510:PHE:CZ	2.56	0.40

There are no symmetry-related clashes.

5.3 Torsion angles [i](#)

5.3.1 Protein backbone [i](#)

In the following table, the Percentiles column shows the percent Ramachandran outliers of the chain as a percentile score with respect to all X-ray entries followed by that with respect to entries of similar resolution.

The Analysed column shows the number of residues for which the backbone conformation was analysed, and the total number of residues.

Mol	Chain	Analysed	Favoured	Allowed	Outliers	Percentiles
1	A	483/535 (90%)	456 (94%)	19 (4%)	8 (2%)	9 4

All (8) Ramachandran outliers are listed below:

Mol	Chain	Res	Type
1	A	67	ASP
1	A	205	LYS
1	A	468	GLN
1	A	206	ASP
1	A	467	ALA
1	A	466	GLU
1	A	209	VAL
1	A	213	ALA

5.3.2 Protein sidechains [i](#)

In the following table, the Percentiles column shows the percent sidechain outliers of the chain as a percentile score with respect to all X-ray entries followed by that with respect to entries of similar resolution.

The Analysed column shows the number of residues for which the sidechain conformation was analysed, and the total number of residues.

Mol	Chain	Analysed	Rotameric	Outliers	Percentiles
1	A	391/422 (93%)	367 (94%)	24 (6%)	18 14

All (24) residues with a non-rotameric sidechain are listed below:

Mol	Chain	Res	Type
1	A	67	ASP
1	A	80	THR
1	A	120	ARG
1	A	123	ILE
1	A	126	VAL
1	A	130	THR
1	A	142	VAL
1	A	175	ARG
1	A	196	LEU
1	A	198	ASP
1	A	199	ARG
1	A	204	ILE
1	A	205	LYS
1	A	206	ASP
1	A	217	LYS
1	A	218	THR
1	A	276	LEU
1	A	277	GLN
1	A	282	ARG
1	A	416	ILE
1	A	450	SER
1	A	468	GLN
1	A	525	ASP
1	A	536	LEU

Sometimes sidechains can be flipped to improve hydrogen bonding and reduce clashes. All (3) such sidechains are listed below:

Mol	Chain	Res	Type
1	A	324	GLN

Continued on next page...

Continued from previous page...

Mol	Chain	Res	Type
1	A	371	GLN
1	A	468	GLN

5.3.3 RNA [i](#)

There are no RNA molecules in this entry.

5.4 Non-standard residues in protein, DNA, RNA chains [i](#)

There are no non-standard protein/DNA/RNA residues in this entry.

5.5 Carbohydrates [i](#)

There are no monosaccharides in this entry.

5.6 Ligand geometry [i](#)

2 ligands are modelled in this entry.

In the following table, the Counts columns list the number of bonds (or angles) for which Mogul statistics could be retrieved, the number of bonds (or angles) that are observed in the model and the number of bonds (or angles) that are defined in the Chemical Component Dictionary. The Link column lists molecule types, if any, to which the group is linked. The Z score for a bond length (or angle) is the number of standard deviations the observed value is removed from the expected value. A bond length (or angle) with $|Z| > 2$ is considered an outlier worth inspection. RMSZ is the root-mean-square of all Z scores of the bond lengths (or angles).

Mol	Type	Chain	Res	Link	Bond lengths			Bond angles		
					Counts	RMSZ	# Z > 2	Counts	RMSZ	# Z > 2
2	NEF	A	1202	1	30,37,38	1.34	4 (13%)	31,51,53	3.62	13 (41%)
2	NEF	A	1201	1	30,37,38	1.43	5 (16%)	31,51,53	2.29	7 (22%)

In the following table, the Chirals column lists the number of chiral outliers, the number of chiral centers analysed, the number of these observed in the model and the number defined in the Chemical Component Dictionary. Similar counts are reported in the Torsion and Rings columns. '-' means no outliers of that kind were identified.

Mol	Type	Chain	Res	Link	Chirals	Torsions	Rings
2	NEF	A	1202	1	-	12/19/44/46	0/2/3/3

Continued on next page...

Continued from previous page...

Mol	Type	Chain	Res	Link	Chirals	Torsions	Rings
2	NEF	A	1201	1	-	5/19/44/46	0/2/3/3

All (9) bond length outliers are listed below:

Mol	Chain	Res	Type	Atoms	Z	Observed(Å)	Ideal(Å)
2	A	1201	NEF	O18-C16	-3.72	1.19	1.30
2	A	1202	NEF	O18-C16	-3.56	1.20	1.30
2	A	1201	NEF	C15-C16	3.28	1.53	1.48
2	A	1201	NEF	O2-C1	2.78	1.31	1.19
2	A	1201	NEF	C7-C8	-2.65	1.49	1.51
2	A	1202	NEF	C15-C16	2.63	1.52	1.48
2	A	1202	NEF	O17-C16	-2.63	1.15	1.22
2	A	1201	NEF	C8-S12	-2.37	1.68	1.73
2	A	1202	NEF	O2-C1	2.18	1.28	1.19

All (20) bond angle outliers are listed below:

Mol	Chain	Res	Type	Atoms	Z	Observed(°)	Ideal(°)
2	A	1202	NEF	C2-C4-C6	-12.60	108.29	120.47
2	A	1202	NEF	C6-C4-C15	10.87	130.97	122.10
2	A	1201	NEF	C3-N4-C5	-6.06	116.64	123.13
2	A	1201	NEF	C13-C3-N4	6.01	123.07	109.98
2	A	1202	NEF	O2-C1-C3	-5.52	109.45	124.83
2	A	1201	NEF	C13-N14-C15	4.53	128.97	118.32
2	A	1202	NEF	C8-C7-C5	-4.51	104.41	113.39
2	A	1201	NEF	O2-C1-C3	-3.95	113.82	124.83
2	A	1201	NEF	C8-C7-C5	-3.61	106.22	113.39
2	A	1201	NEF	C2-C4-C6	-3.47	117.12	120.47
2	A	1202	NEF	C13-C3-N4	3.41	117.41	109.98
2	A	1202	NEF	C3-N4-C5	-3.40	119.49	123.13
2	A	1202	NEF	C16-C15-C4	2.81	125.60	122.79
2	A	1201	NEF	C17-C14-C21	-2.62	115.90	118.92
2	A	1202	NEF	C21-C14-C12	-2.46	121.55	124.27
2	A	1202	NEF	O17-C16-C15	-2.41	115.87	120.13
2	A	1202	NEF	C17-C14-C21	-2.37	116.19	118.92
2	A	1202	NEF	C20-C19-N23	-2.24	116.77	118.75
2	A	1202	NEF	C13-N14-C15	2.09	123.23	118.32
2	A	1202	NEF	C18-C19-N23	2.01	120.89	119.38

There are no chirality outliers.

All (17) torsion outliers are listed below:

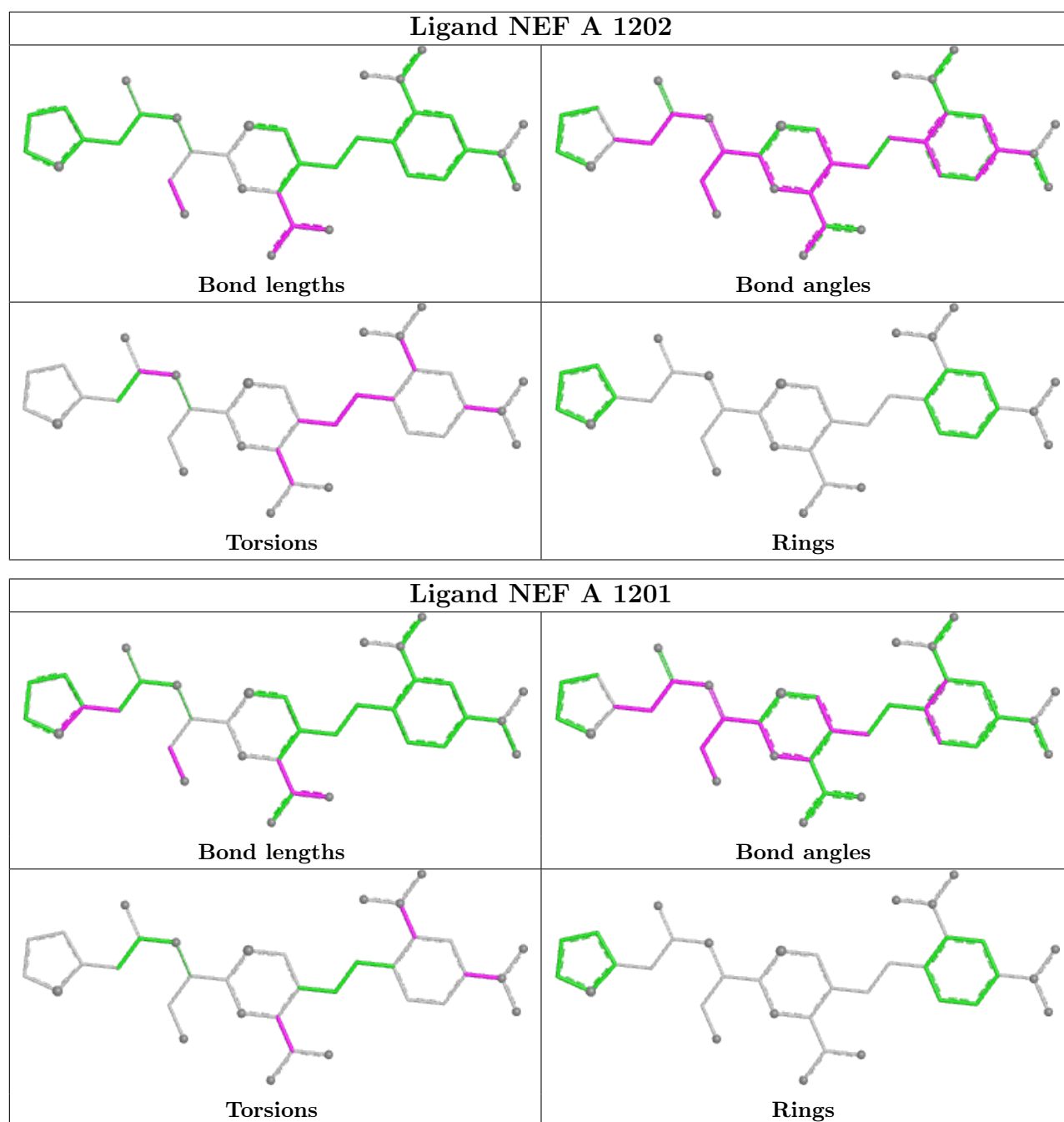
Mol	Chain	Res	Type	Atoms
2	A	1201	NEF	C18-C19-N23-O27
2	A	1201	NEF	C20-C19-N23-O27
2	A	1201	NEF	C14-C21-N22-O25
2	A	1201	NEF	C20-C21-N22-O25
2	A	1202	NEF	C6-C12-C14-C21
2	A	1202	NEF	N14-C15-C16-O18
2	A	1202	NEF	C7-C5-N4-C3
2	A	1202	NEF	O6-C5-N4-C3
2	A	1202	NEF	C18-C19-N23-O27
2	A	1202	NEF	C20-C19-N23-O27
2	A	1202	NEF	C20-C21-N22-O25
2	A	1202	NEF	C14-C12-C6-C4
2	A	1202	NEF	C2-C4-C6-C12
2	A	1201	NEF	C4-C15-C16-O17
2	A	1202	NEF	C4-C15-C16-O18
2	A	1202	NEF	C14-C21-N22-O25
2	A	1202	NEF	C6-C12-C14-C17

There are no ring outliers.

1 monomer is involved in 4 short contacts:

Mol	Chain	Res	Type	Clashes	Symm-Clashes
2	A	1202	NEF	4	0

The following is a two-dimensional graphical depiction of Mogul quality analysis of bond lengths, bond angles, torsion angles, and ring geometry for all instances of the Ligand of Interest. In addition, ligands with molecular weight > 250 and outliers as shown on the validation Tables will also be included. For torsion angles, if less than 5% of the Mogul distribution of torsion angles is within 10 degrees of the torsion angle in question, then that torsion angle is considered an outlier. Any bond that is central to one or more torsion angles identified as an outlier by Mogul will be highlighted in the graph. For rings, the root-mean-square deviation (RMSD) between the ring in question and similar rings identified by Mogul is calculated over all ring torsion angles. If the average RMSD is greater than 60 degrees and the minimal RMSD between the ring in question and any Mogul-identified rings is also greater than 60 degrees, then that ring is considered an outlier. The outliers are highlighted in purple. The color gray indicates Mogul did not find sufficient equivalents in the CSD to analyse the geometry.



5.7 Other polymers [\(i\)](#)

There are no such residues in this entry.

5.8 Polymer linkage issues [\(i\)](#)

There are no chain breaks in this entry.

6 Fit of model and data

6.1 Protein, DNA and RNA chains

In the following table, the column labelled ‘#RSRZ> 2’ contains the number (and percentage) of RSRZ outliers, followed by percent RSRZ outliers for the chain as percentile scores relative to all X-ray entries and entries of similar resolution. The OWAB column contains the minimum, median, 95th percentile and maximum values of the occupancy-weighted average B-factor per residue. The column labelled ‘Q< 0.9’ lists the number of (and percentage) of residues with an average occupancy less than 0.9.

Mol	Chain	Analysed	<RSRZ>	#RSRZ>2	OWAB(Å ²)	Q<0.9
1	A	491/535 (91%)	0.64	55 (11%) 5 4	21, 36, 82, 116	0

All (55) RSRZ outliers are listed below:

Mol	Chain	Res	Type	RSRZ
1	A	206	ASP	12.3
1	A	126	VAL	6.3
1	A	207	VAL	6.3
1	A	189	VAL	5.8
1	A	469	GLY	5.7
1	A	209	VAL	5.1
1	A	471	VAL	4.8
1	A	129	LEU	4.6
1	A	203	VAL	4.6
1	A	196	LEU	4.5
1	A	170	VAL	4.3
1	A	135	GLU	4.2
1	A	276	LEU	4.2
1	A	468	GLN	4.0
1	A	208	GLN	3.9
1	A	529	LYS	3.8
1	A	275	ASN	3.8
1	A	326	GLY	3.7
1	A	130	THR	3.6
1	A	53	VAL	3.4
1	A	536	LEU	3.4
1	A	81	THR	3.4
1	A	204	ILE	3.4
1	A	328	TYR	3.3
1	A	125	LEU	3.1
1	A	124	TYR	3.1
1	A	467	ALA	3.1

Continued on next page...

Continued from previous page...

Mol	Chain	Res	Type	RSRZ
1	A	274	ARG	3.1
1	A	470	GLY	3.0
1	A	123	ILE	2.9
1	A	54	ARG	2.9
1	A	205	LYS	2.8
1	A	58	ILE	2.8
1	A	119	GLU	2.8
1	A	55	HIS	2.7
1	A	82	LEU	2.6
1	A	134	GLY	2.6
1	A	122	PHE	2.6
1	A	503	TYR	2.6
1	A	113	ARG	2.5
1	A	132	GLU	2.5
1	A	200	ARG	2.5
1	A	128	GLY	2.4
1	A	214	LYS	2.4
1	A	410	GLY	2.4
1	A	148	ILE	2.4
1	A	474	ALA	2.3
1	A	193	ARG	2.3
1	A	277	GLN	2.2
1	A	52	SER	2.2
1	A	199	ARG	2.1
1	A	530	ALA	2.1
1	A	133	GLN	2.0
1	A	210	THR	2.0
1	A	118	ALA	2.0

6.2 Non-standard residues in protein, DNA, RNA chains [i](#)

There are no non-standard protein/DNA/RNA residues in this entry.

6.3 Carbohydrates [i](#)

There are no monosaccharides in this entry.

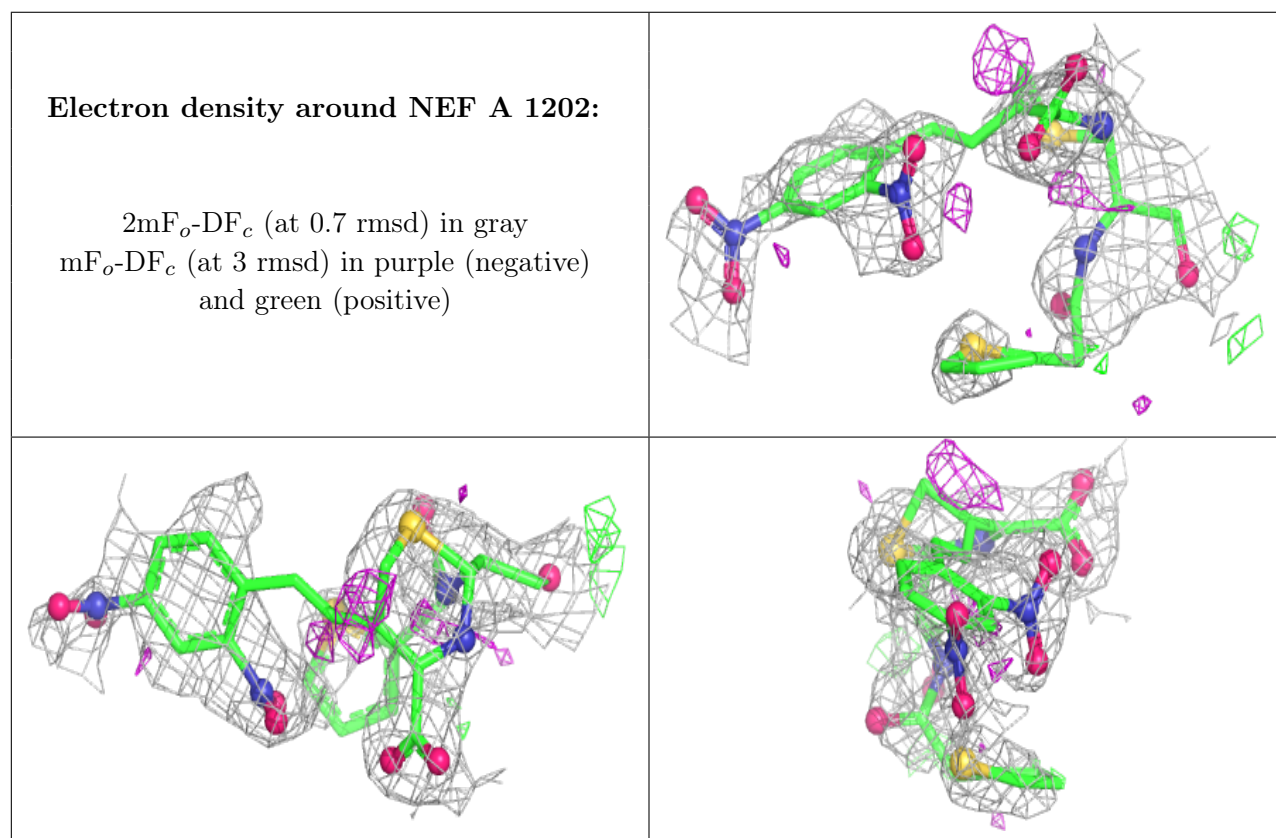
6.4 Ligands [i](#)

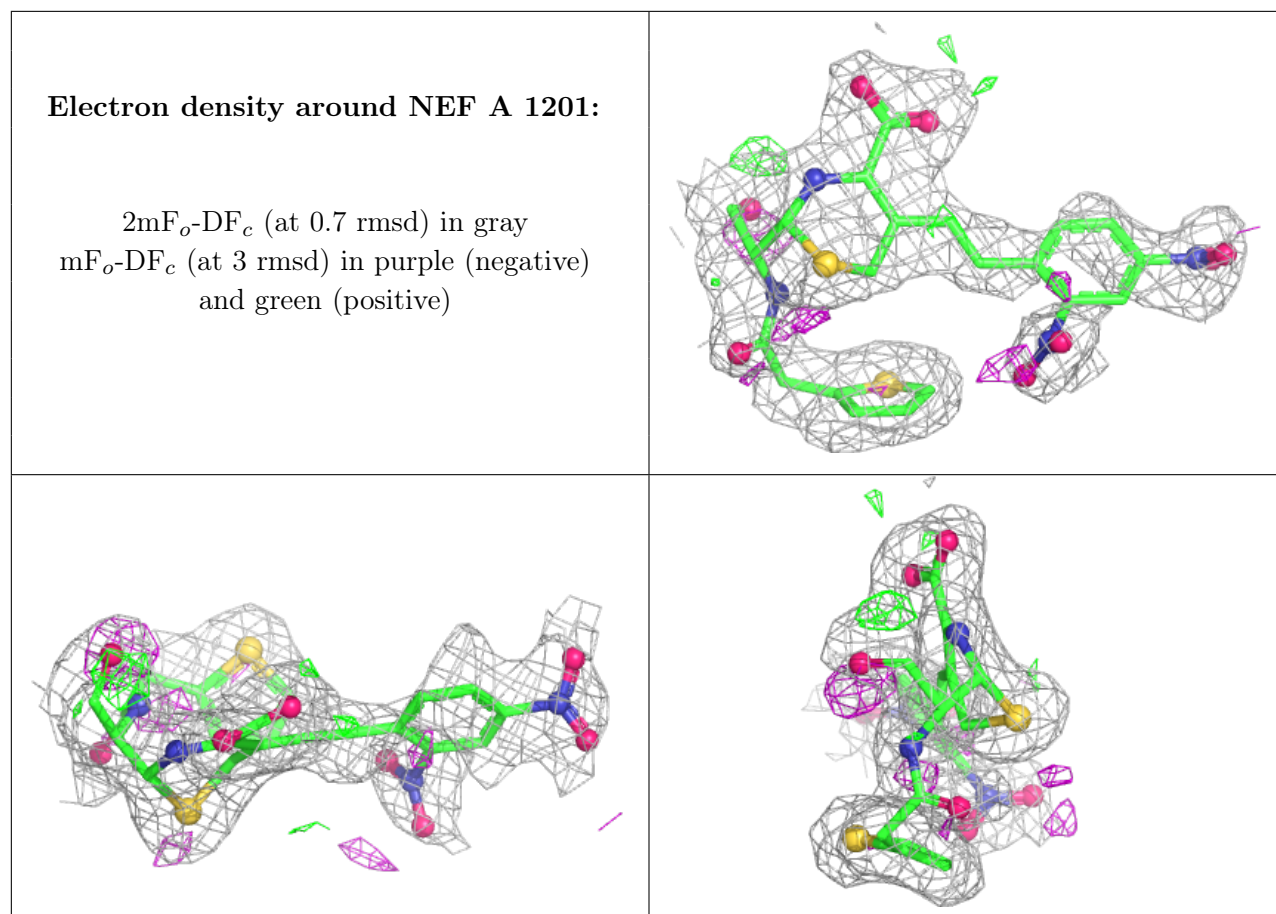
In the following table, the Atoms column lists the number of modelled atoms in the group and the number defined in the chemical component dictionary. The B-factors column lists the minimum,

median, 95th percentile and maximum values of B factors of atoms in the group. The column labelled 'Q< 0.9' lists the number of atoms with occupancy less than 0.9.

Mol	Type	Chain	Res	Atoms	RSCC	RSR	B-factors(Å ²)	Q<0.9
2	NEF	A	1202	35/36	0.79	0.32	51,84,110,113	0
2	NEF	A	1201	35/36	0.86	0.16	29,46,83,83	0

The following is a graphical depiction of the model fit to experimental electron density of all instances of the Ligand of Interest. In addition, ligands with molecular weight > 250 and outliers as shown on the geometry validation Tables will also be included. Each fit is shown from different orientation to approximate a three-dimensional view.





6.5 Other polymers [i](#)

There are no such residues in this entry.