



Full wwPDB X-ray Structure Validation Report ⓘ

Aug 9, 2020 – 02:16 AM BST

PDB ID : 2HTV
Title : N4 neuraminidase
Authors : Russell, R.J.; Haire, L.F.; Stevens, D.J.; Collins, P.J.; Lin, Y.P.; Blackburn, G.M.; Hay, A.J.; Gamblin, S.J.; Skehel, J.J.
Deposited on : 2006-07-26
Resolution : 2.80 Å(reported)

This is a Full wwPDB X-ray Structure Validation Report for a publicly released PDB entry.

We welcome your comments at validation@mail.wwpdb.org

A user guide is available at

<https://www.wwpdb.org/validation/2017/XrayValidationReportHelp>

with specific help available everywhere you see the ⓘ symbol.

The following versions of software and data (see [references ⓘ](#)) were used in the production of this report:

MolProbity : 4.02b-467
Mogul : 1.8.5 (274361), CSD as541be (2020)
Xtriage (Phenix) : 1.13
EDS : 2.13.1
Percentile statistics : 20191225.v01 (using entries in the PDB archive December 25th 2019)
Refmac : 5.8.0158
CCP4 : 7.0.044 (Gargrove)
Ideal geometry (proteins) : Engh & Huber (2001)
Ideal geometry (DNA, RNA) : Parkinson et al. (1996)
Validation Pipeline (wwPDB-VP) : 2.13.1

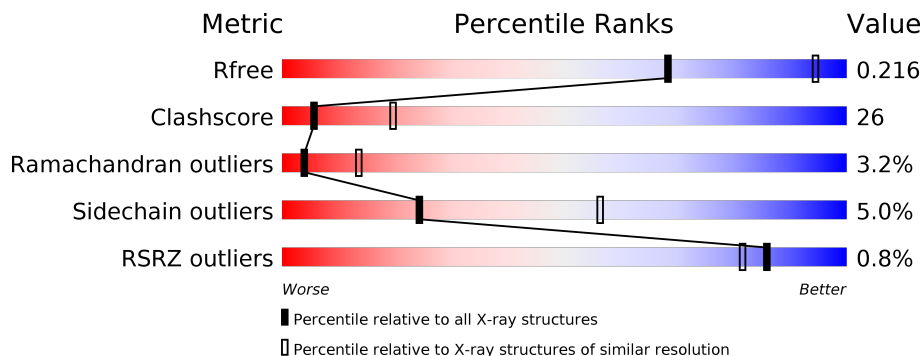
1 Overall quality at a glance

The following experimental techniques were used to determine the structure:

X-RAY DIFFRACTION

The reported resolution of this entry is 2.80 Å.

Percentile scores (ranging between 0-100) for global validation metrics of the entry are shown in the following graphic. The table shows the number of entries on which the scores are based.



Metric	Whole archive (#Entries)	Similar resolution (#Entries, resolution range(Å))
R_{free}	130704	3140 (2.80-2.80)
Clashscore	141614	3569 (2.80-2.80)
Ramachandran outliers	138981	3498 (2.80-2.80)
Sidechain outliers	138945	3500 (2.80-2.80)
RSRZ outliers	127900	3078 (2.80-2.80)

The table below summarises the geometric issues observed across the polymeric chains and their fit to the electron density. The red, orange, yellow and green segments on the lower bar indicate the fraction of residues that contain outliers for ≥ 3 , 2, 1 and 0 types of geometric quality criteria respectively. A grey segment represents the fraction of residues that are not modelled. The numeric value for each fraction is indicated below the corresponding segment, with a dot representing fractions $\leq 5\%$. The upper red bar (where present) indicates the fraction of residues that have poor fit to the electron density. The numeric value is given above the bar.

Mol	Chain	Length	Quality of chain
1	A	390	 62% 33% . .
1	B	390	 54% 39% 6% ..

The following table lists non-polymeric compounds, carbohydrate monomers and non-standard residues in protein, DNA, RNA chains that are outliers for geometric or electron-density-fit criteria:

Mol	Type	Chain	Res	Chirality	Geometry	Clashes	Electron density
2	NAG	A	1146	X	-	-	X
2	NAG	B	1147	X	-	-	X

2 Entry composition [i](#)

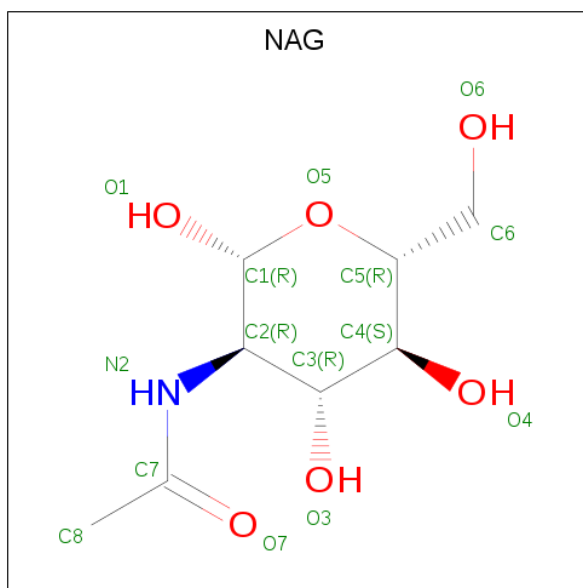
There are 4 unique types of molecules in this entry. The entry contains 6340 atoms, of which 0 are hydrogens and 0 are deuteriums.

In the tables below, the ZeroOcc column contains the number of atoms modelled with zero occupancy, the AltConf column contains the number of residues with at least one atom in alternate conformation and the Trace column contains the number of residues modelled with at most 2 atoms.

- Molecule 1 is a protein called Neuraminidase.

Mol	Chain	Residues	Atoms					ZeroOcc	AltConf	Trace
			Total	C	N	O	S			
1	A	388	Total 2995	C 1880	N 516	O 577	S 22	0	0	0
1	B	388	Total 2995	C 1880	N 516	O 577	S 22	0	0	0

- Molecule 2 is 2-acetamido-2-deoxy-beta-D-glucopyranose (three-letter code: NAG) (formula: $C_8H_{15}NO_6$).



Mol	Chain	Residues	Atoms				ZeroOcc	AltConf
			Total	C	N	O		
2	A	1	Total 15	C 8	N 1	O 6	0	0
2	B	1	Total 15	C 8	N 1	O 6	0	0

- Molecule 3 is CALCIUM ION (three-letter code: CA) (formula: Ca).

Mol	Chain	Residues	Atoms	ZeroOcc	AltConf
3	B	1	Total Ca 1 1	0	0
3	A	1	Total Ca 1 1	0	0

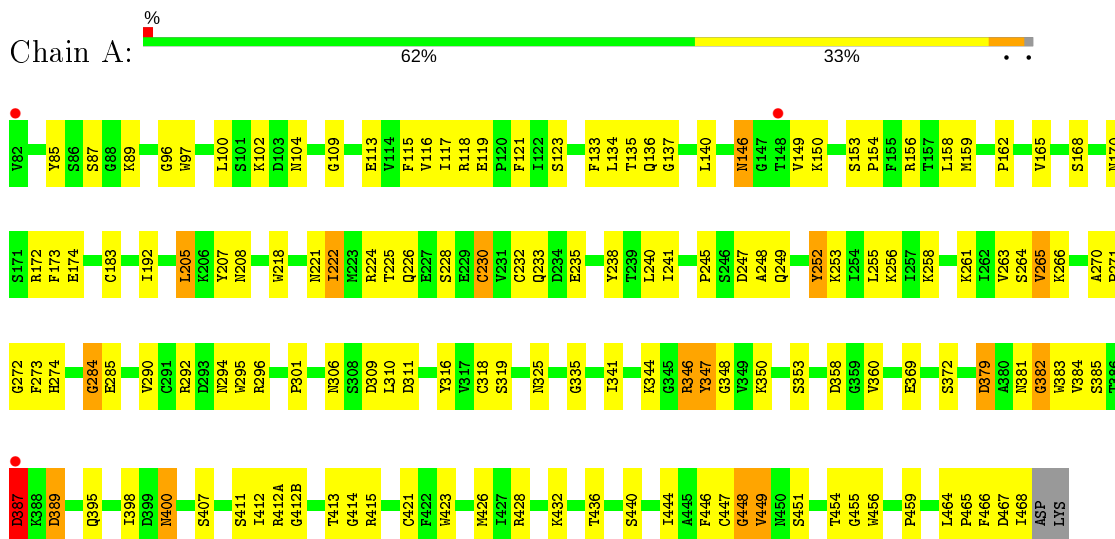
- Molecule 4 is water.

Mol	Chain	Residues	Atoms	ZeroOcc	AltConf
4	A	174	Total O 174 174	0	0
4	B	144	Total O 144 144	0	0

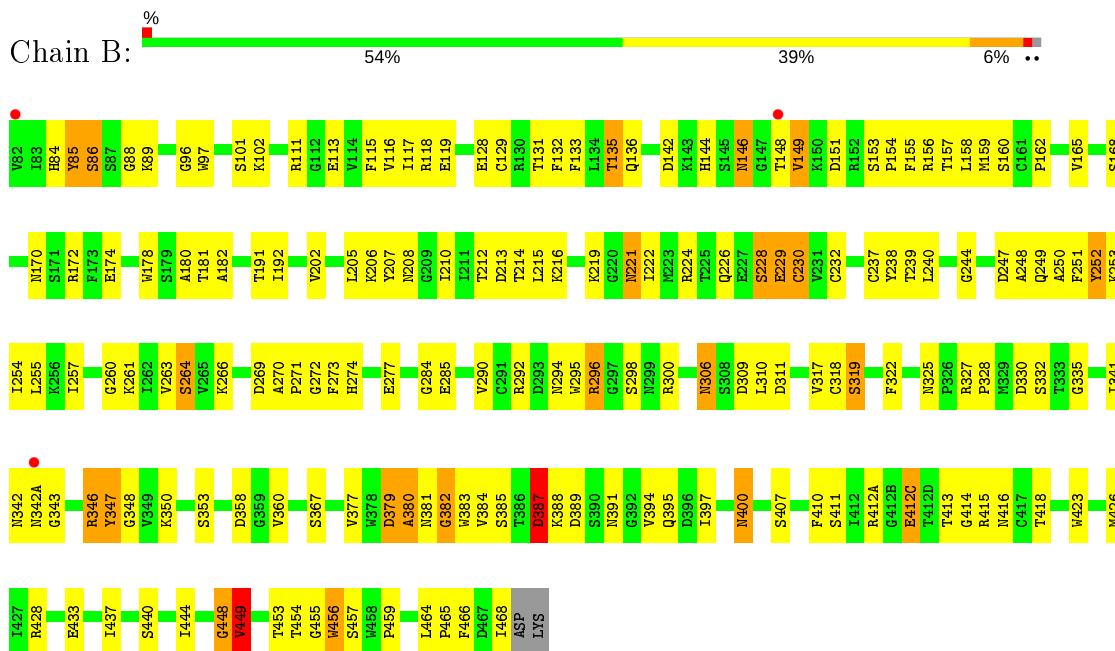
3 Residue-property plots

These plots are drawn for all protein, RNA, DNA and oligosaccharide chains in the entry. The first graphic for a chain summarises the proportions of the various outlier classes displayed in the second graphic. The second graphic shows the sequence view annotated by issues in geometry and electron density. Residues are color-coded according to the number of geometric quality criteria for which they contain at least one outlier: green = 0, yellow = 1, orange = 2 and red = 3 or more. A red dot above a residue indicates a poor fit to the electron density ($RSRZ > 2$). Stretches of 2 or more consecutive residues without any outlier are shown as a green connector. Residues present in the sample, but not in the model, are shown in grey.

- Molecule 1: Neuraminidase



- Molecule 1: Neuraminidase



4 Data and refinement statistics

Property	Value	Source
Space group	P 4 3 2	Depositor
Cell constants a, b, c, α , β , γ	193.79Å 193.79Å 193.79Å 90.00° 90.00° 90.00°	Depositor
Resolution (Å)	30.00 – 2.80 19.58 – 2.80	Depositor EDS
% Data completeness (in resolution range)	(Not available) (30.00-2.80) 94.3 (19.58-2.80)	Depositor EDS
R_{merge}	(Not available)	Depositor
R_{sym}	0.15	Depositor
$\langle I/\sigma(I) \rangle$ ¹	2.79 (at 2.79Å)	Xtrriage
Refinement program	CNS 1.1	Depositor
R, R_{free}	0.222 , 0.273 0.220 , 0.216	Depositor DCC
R_{free} test set	1471 reflections (5.01%)	wwPDB-VP
Wilson B-factor (Å ²)	26.0	Xtrriage
Anisotropy	0.000	Xtrriage
Bulk solvent k_{sol} (e/Å ³), B_{sol} (Å ²)	0.34 , 45.2	EDS
L-test for twinning ²	$\langle L \rangle = 0.50$, $\langle L^2 \rangle = 0.33$	Xtrriage
Estimated twinning fraction	No twinning to report.	Xtrriage
F_o, F_c correlation	0.90	EDS
Total number of atoms	6340	wwPDB-VP
Average B, all atoms (Å ²)	21.0	wwPDB-VP

Xtrriage's analysis on translational NCS is as follows: *The analyses of the Patterson function reveals a significant off-origin peak that is 46.11 % of the origin peak, indicating pseudo-translational symmetry. The chance of finding a peak of this or larger height randomly in a structure without pseudo-translational symmetry is equal to 1.1995e-04. The detected translational NCS is most likely also responsible for the elevated intensity ratio.*

¹ Intensities estimated from amplitudes.

² Theoretical values of $\langle |L| \rangle$, $\langle L^2 \rangle$ for acentric reflections are 0.5, 0.333 respectively for untwinned datasets, and 0.375, 0.2 for perfectly twinned datasets.

5 Model quality [i](#)

5.1 Standard geometry [i](#)

Bond lengths and bond angles in the following residue types are not validated in this section: CA, NAG

The Z score for a bond length (or angle) is the number of standard deviations the observed value is removed from the expected value. A bond length (or angle) with $|Z| > 5$ is considered an outlier worth inspection. RMSZ is the root-mean-square of all Z scores of the bond lengths (or angles).

Mol	Chain	Bond lengths		Bond angles	
		RMSZ	# $ Z > 5$	RMSZ	# $ Z > 5$
1	A	0.43	1/3074 (0.0%)	0.78	3/4171 (0.1%)
1	B	0.40	1/3074 (0.0%)	0.76	3/4171 (0.1%)
All	All	0.41	2/6148 (0.0%)	0.77	6/8342 (0.1%)

All (2) bond length outliers are listed below:

Mol	Chain	Res	Type	Atoms	Z	Observed(Å)	Ideal(Å)
1	A	387	ASP	CB-CG	7.61	1.67	1.51
1	B	387	ASP	CB-CG	5.43	1.63	1.51

All (6) bond angle outliers are listed below:

Mol	Chain	Res	Type	Atoms	Z	Observed(°)	Ideal(°)
1	A	387	ASP	CB-CG-OD2	14.22	131.10	118.30
1	B	387	ASP	CB-CG-OD2	12.77	129.79	118.30
1	B	387	ASP	CB-CG-OD1	-7.66	111.41	118.30
1	B	379	ASP	CB-CG-OD2	7.61	125.14	118.30
1	A	387	ASP	CB-CG-OD1	-7.46	111.58	118.30
1	A	379	ASP	CB-CG-OD2	6.37	124.03	118.30

There are no chirality outliers.

There are no planarity outliers.

5.2 Too-close contacts [i](#)

In the following table, the Non-H and H(model) columns list the number of non-hydrogen atoms and hydrogen atoms in the chain respectively. The H(added) column lists the number of hydrogen atoms added and optimized by MolProbity. The Clashes column lists the number of clashes within the asymmetric unit, whereas Symm-Clashes lists symmetry related clashes.

Mol	Chain	Non-H	H(model)	H(added)	Clashes	Symm-Clashes
1	A	2995	0	2840	127	0
1	B	2995	0	2840	173	0
2	A	15	0	15	2	0
2	B	15	0	15	3	0
3	A	1	0	0	0	0
3	B	1	0	0	0	0
4	A	174	0	0	3	0
4	B	144	0	0	8	0
All	All	6340	0	5710	300	0

The all-atom clashscore is defined as the number of clashes found per 1000 atoms (including hydrogen atoms). The all-atom clashscore for this structure is 26.

All (300) close contacts within the same asymmetric unit are listed below, sorted by their clash magnitude.

Atom-1	Atom-2	Interatomic distance (Å)	Clash overlap (Å)
1:B:146:ASN:ND2	2:B:1147:NAG:H1	1.67	1.08
1:B:426:MET:HE1	1:B:459:PRO:HA	1.30	1.07
1:B:226:GLN:HE21	1:B:239:THR:HG23	1.14	1.06
1:B:146:ASN:HD21	2:B:1147:NAG:H1	0.87	0.99
1:A:426:MET:HE1	1:A:459:PRO:HA	1.44	0.99
1:B:249:GLN:NE2	1:B:271:PRO:HA	1.82	0.94
1:A:306:ASN:HD22	1:A:311:ASP:HB2	1.34	0.92
1:A:249:GLN:NE2	1:A:272:GLY:H	1.67	0.91
1:B:97:TRP:H	1:B:395:GLN:HE22	1.20	0.89
1:A:97:TRP:H	1:A:395:GLN:HE22	1.19	0.89
1:A:318:CYS:HB3	1:A:385:SER:O	1.73	0.88
1:B:413:THR:HG22	1:B:414:GLY:H	1.37	0.88
1:A:466:PHE:C	1:A:468:ILE:H	1.84	0.80
1:B:306:ASN:HD21	1:B:311:ASP:H	1.28	0.80
1:B:249:GLN:HE22	1:B:271:PRO:HA	1.48	0.78
1:A:381:ASN:HB3	1:A:385:SER:HB3	1.67	0.76
1:B:263:VAL:O	1:B:264:SER:HB3	1.86	0.74
1:B:156:ARG:HG2	1:B:178:TRP:HA	1.70	0.73
1:B:239:THR:HG22	1:B:240:LEU:H	1.53	0.73
1:A:135:THR:HG22	1:A:137:GLY:H	1.52	0.73
1:B:263:VAL:HG12	1:B:263:VAL:O	1.89	0.72
1:A:426:MET:CE	1:A:459:PRO:HA	2.16	0.72
1:A:454:THR:HG22	1:A:455:GLY:O	1.89	0.71
1:A:468:ILE:HG23	1:A:468:ILE:O	1.90	0.71
1:B:239:THR:HG22	1:B:240:LEU:N	2.05	0.71
1:B:319:SER:HB2	1:B:382:GLY:HA2	1.73	0.71

Continued on next page...

Continued from previous page...

Atom-1	Atom-2	Interatomic distance (Å)	Clash overlap (Å)
1:A:306:ASN:ND2	1:A:311:ASP:HB2	2.06	0.70
1:A:292:ARG:HH11	1:A:294:ASN:HD21	1.39	0.70
1:B:306:ASN:ND2	1:B:311:ASP:H	1.89	0.69
1:B:228:SER:HB3	1:B:350:LYS:CE	2.23	0.69
1:A:159:MET:HE3	1:A:173:PHE:HA	1.75	0.69
1:A:292:ARG:HH11	1:A:294:ASN:ND2	1.91	0.68
1:B:387:ASP:OD2	1:B:389:ASP:O	2.12	0.68
1:A:102:LYS:HZ2	1:A:104:ASN:ND2	1.92	0.67
1:A:115:PHE:CD2	1:A:135:THR:HG21	2.29	0.67
1:B:228:SER:HB3	1:B:350:LYS:HE2	1.75	0.67
1:B:413:THR:HG21	1:B:415:ARG:HG3	1.77	0.66
1:B:116:VAL:O	1:B:135:THR:HG23	1.96	0.65
1:B:212:THR:OG1	1:B:260:GLY:HA3	1.96	0.65
1:A:387:ASP:OD2	1:A:389:ASP:O	2.14	0.64
1:B:413:THR:HG22	1:B:414:GLY:N	2.11	0.64
1:A:309:ASP:O	1:A:310:LEU:HB2	1.97	0.64
1:A:228:SER:HB2	1:A:350:LYS:CE	2.26	0.64
1:A:226:GLN:HE22	1:A:230:CYS:HA	1.63	0.63
1:B:381:ASN:HB3	1:B:385:SER:HB3	1.79	0.63
1:B:222:ILE:O	1:B:224:ARG:HG3	1.99	0.63
1:A:192:ILE:HG12	1:A:205:LEU:HD13	1.81	0.63
1:B:97:TRP:N	1:B:395:GLN:HE22	1.96	0.63
1:A:117:ILE:HG13	1:A:133:PHE:CD1	2.34	0.62
1:B:229:GLU:HG3	1:B:230:CYS:O	1.99	0.62
1:A:235:GLU:HB3	1:A:258:LYS:HE3	1.81	0.62
1:B:249:GLN:HG3	4:B:1156:HOH:O	1.97	0.62
1:B:437:ILE:HG21	2:B:1147:NAG:H82	1.80	0.62
1:B:330:ASP:HB3	1:B:388:LYS:HB2	1.81	0.62
1:A:270:ALA:HB1	1:A:273:PHE:HB2	1.80	0.62
1:A:136:GLN:NE2	1:A:156:ARG:HD2	2.15	0.62
1:B:318:CYS:HB3	1:B:385:SER:O	1.98	0.62
1:B:380:ALA:H	1:B:391:ASN:ND2	1.96	0.62
1:A:102:LYS:NZ	1:A:104:ASN:ND2	2.47	0.62
1:B:85:TYR:HD2	1:B:412(C):GLU:HG3	1.65	0.61
1:B:226:GLN:HE22	1:B:230:CYS:HA	1.65	0.61
1:A:381:ASN:CB	1:A:385:SER:HB3	2.30	0.61
1:B:335:GLY:HA2	1:B:341:ILE:HD12	1.83	0.61
1:B:426:MET:HE1	1:B:459:PRO:CA	2.19	0.61
1:A:266:LYS:HD3	1:A:310:LEU:O	2.01	0.61
1:B:102:LYS:HG3	1:B:444:ILE:HG22	1.81	0.61
1:A:162:PRO:O	1:A:165:VAL:HG22	2.01	0.61

Continued on next page...

Continued from previous page...

Atom-1	Atom-2	Interatomic distance (Å)	Clash overlap (Å)
1:A:306:ASN:HB3	1:A:309:ASP:H	1.64	0.61
1:B:387:ASP:HB2	1:B:389:ASP:H	1.65	0.61
1:B:248:ALA:HA	1:B:295:TRP:CG	2.37	0.60
1:A:381:ASN:HB3	1:A:385:SER:CB	2.30	0.60
1:A:319:SER:HB2	1:A:382:GLY:HA2	1.84	0.60
1:A:464:LEU:HB3	1:A:465:PRO:HA	1.83	0.60
1:B:413:THR:CG2	1:B:415:ARG:HG3	2.31	0.60
1:A:146:ASN:ND2	1:A:146:ASN:O	2.34	0.60
1:B:111:ARG:NH1	4:B:1236:HOH:O	2.35	0.60
1:A:87:SER:HB3	1:A:233:GLN:HB3	1.84	0.59
1:B:248:ALA:HA	1:B:295:TRP:CD1	2.37	0.59
1:A:102:LYS:HG3	1:A:444:ILE:HG22	1.85	0.59
1:B:249:GLN:HG2	1:B:295:TRP:CZ3	2.38	0.59
1:B:358:ASP:HB3	1:B:384:VAL:CG2	2.32	0.58
1:A:387:ASP:HB2	1:A:389:ASP:H	1.68	0.58
1:B:347:TYR:HB3	4:B:1157:HOH:O	2.02	0.58
1:B:295:TRP:CD2	1:B:296:ARG:HD2	2.39	0.58
1:B:381:ASN:O	1:B:383:TRP:N	2.36	0.58
1:A:249:GLN:HE21	1:A:272:GLY:H	1.51	0.58
1:B:292:ARG:HH11	1:B:294:ASN:ND2	2.02	0.58
1:A:240:LEU:HD13	1:A:241:ILE:N	2.18	0.58
1:B:96:GLY:O	1:B:448:GLY:O	2.22	0.58
1:B:464:LEU:HB3	1:B:465:PRO:HA	1.86	0.57
1:A:135:THR:O	1:A:156:ARG:HA	2.03	0.57
1:A:412(B):GLY:O	1:A:413:THR:O	2.22	0.57
1:B:296:ARG:HG3	1:B:296:ARG:HH11	1.70	0.57
1:B:290:VAL:HG21	1:B:353:SER:HB2	1.87	0.57
1:A:85:TYR:HB3	1:A:412(A):ARG:NH1	2.19	0.56
1:B:249:GLN:NE2	1:B:272:GLY:H	2.03	0.56
1:A:306:ASN:HB2	1:A:311:ASP:H	1.70	0.56
1:B:454:THR:HG22	1:B:455:GLY:O	2.04	0.56
1:B:132:PHE:HB3	1:B:158:LEU:HD11	1.88	0.56
1:A:398:ILE:HD13	1:A:426:MET:HE2	1.86	0.56
1:A:379:ASP:OD2	1:A:387:ASP:OD2	2.24	0.56
1:B:358:ASP:HB3	1:B:384:VAL:HG22	1.88	0.55
1:A:117:ILE:CG2	1:A:118:ARG:N	2.70	0.55
1:B:117:ILE:CG2	1:B:118:ARG:N	2.70	0.55
1:B:226:GLN:NE2	1:B:239:THR:HG23	2.00	0.55
1:A:436:THR:HB	1:A:468:ILE:HD11	1.88	0.54
1:A:466:PHE:O	1:A:468:ILE:N	2.41	0.54
1:A:466:PHE:C	1:A:468:ILE:N	2.55	0.54

Continued on next page...

Continued from previous page...

Atom-1	Atom-2	Interatomic distance (Å)	Clash overlap (Å)
1:B:115:PHE:O	1:B:117:ILE:HD13	2.08	0.54
1:B:192:ILE:HG12	1:B:205:LEU:HD22	1.88	0.54
1:B:116:VAL:HG13	1:B:440:SER:HB2	1.90	0.53
1:A:119:GLU:OE2	1:A:134:LEU:HD12	2.07	0.53
1:A:256:LYS:HB3	1:A:263:VAL:O	2.08	0.53
1:A:346:ARG:HG3	1:A:347:TYR:N	2.23	0.53
1:A:449:VAL:HG13	1:A:451:SER:OG	2.09	0.53
1:B:172:ARG:HD3	4:B:1278:HOH:O	2.07	0.53
1:A:172:ARG:HD2	1:A:174:GLU:OE1	2.09	0.53
1:A:249:GLN:NE2	1:A:272:GLY:N	2.48	0.53
1:B:306:ASN:C	1:B:306:ASN:HD22	2.11	0.52
1:A:96:GLY:O	1:A:448:GLY:O	2.28	0.52
1:A:159:MET:CE	1:A:173:PHE:HA	2.40	0.52
1:A:252:TYR:OH	1:A:274:HIS:HA	2.09	0.52
1:A:97:TRP:H	1:A:395:GLN:NE2	2.00	0.52
1:A:117:ILE:HG23	1:A:118:ARG:N	2.24	0.52
1:B:249:GLN:HE21	1:B:271:PRO:HA	1.68	0.52
1:B:455:GLY:O	1:B:456:TRP:HB2	2.08	0.52
1:B:181:THR:HG22	1:B:192:ILE:HB	1.92	0.51
1:A:228:SER:HB2	1:A:350:LYS:HE2	1.91	0.51
1:A:372:SER:OG	1:A:400:ASN:ND2	2.43	0.51
1:B:117:ILE:HG23	1:B:118:ARG:N	2.24	0.51
1:B:162:PRO:O	1:B:165:VAL:HG22	2.11	0.51
1:B:263:VAL:CG1	1:B:263:VAL:O	2.59	0.51
1:A:255:LEU:HD22	1:A:265:VAL:HB	1.90	0.51
1:B:158:LEU:HG	1:B:174:GLU:HB2	1.92	0.51
1:B:263:VAL:O	1:B:264:SER:CB	2.56	0.51
1:A:448:GLY:O	1:A:449:VAL:HB	2.09	0.51
1:B:191:THR:OG1	1:B:206:LYS:HB2	2.09	0.51
1:B:309:ASP:O	1:B:310:LEU:HB2	2.11	0.51
1:B:172:ARG:HD2	1:B:174:GLU:OE1	2.11	0.51
1:B:84:HIS:HB3	4:B:1148:HOH:O	2.12	0.50
1:B:214:THR:HG22	1:B:215:LEU:N	2.26	0.50
1:B:367:SER:HB2	1:B:400:ASN:HD21	1.77	0.50
1:B:136:GLN:NE2	1:B:156:ARG:HD3	2.26	0.50
1:B:261:LYS:NZ	1:B:261:LYS:HB2	2.26	0.50
1:B:142:ASP:OD2	1:B:144:HIS:HD2	1.95	0.50
1:A:306:ASN:HD22	1:A:311:ASP:CB	2.14	0.49
1:B:155:PHE:O	1:B:157:THR:HG23	2.11	0.49
1:B:448:GLY:O	1:B:449:VAL:HG12	2.12	0.49
1:A:113:GLU:O	1:A:168:SER:HB2	2.12	0.49

Continued on next page...

Continued from previous page...

Atom-1	Atom-2	Interatomic distance (Å)	Clash overlap (Å)
1:B:132:PHE:CD2	1:B:160:SER:HB3	2.48	0.49
1:B:325:ASN:O	1:B:348:GLY:HA2	2.12	0.49
1:A:344:LYS:HE2	1:A:369:GLU:CD	2.32	0.49
1:A:428:ARG:NH1	1:A:464:LEU:HG	2.27	0.49
1:B:377:VAL:HG22	1:B:394:VAL:HG22	1.93	0.49
1:A:245:PRO:HG2	1:A:249:GLN:O	2.13	0.49
1:B:205:LEU:N	1:B:205:LEU:HD23	2.28	0.48
1:A:436:THR:CB	1:A:468:ILE:HD11	2.43	0.48
1:B:210:ILE:O	1:B:212:THR:HG23	2.13	0.48
1:A:271:PRO:HG3	4:A:1314:HOH:O	2.13	0.48
1:A:135:THR:HG22	1:A:137:GLY:N	2.26	0.48
1:B:239:THR:CG2	1:B:240:LEU:H	2.25	0.48
1:B:239:THR:CG2	1:B:240:LEU:N	2.75	0.48
1:A:381:ASN:O	1:A:382:GLY:C	2.52	0.48
1:A:158:LEU:O	1:A:174:GLU:HB2	2.13	0.48
1:B:292:ARG:HE	1:B:294:ASN:HD22	1.62	0.48
1:B:298:SER:HB2	1:B:341:ILE:O	2.13	0.48
1:B:181:THR:CG2	1:B:192:ILE:HB	2.44	0.47
1:B:335:GLY:HA2	1:B:341:ILE:CD1	2.43	0.47
1:B:269:ASP:OD1	1:B:271:PRO:HD3	2.13	0.47
1:B:322:PHE:HB2	1:B:327:ARG:HD2	1.95	0.47
1:A:218:TRP:CZ3	1:A:253:LYS:HD2	2.50	0.47
1:A:266:LYS:HD3	1:A:310:LEU:HB3	1.97	0.47
1:B:254:ILE:C	1:B:255:LEU:HD23	2.35	0.47
1:B:270:ALA:HB1	1:B:273:PHE:HB2	1.97	0.47
1:A:232:CYS:O	1:A:412(A):ARG:NH2	2.44	0.47
1:A:249:GLN:HE22	1:A:272:GLY:H	1.54	0.47
1:A:290:VAL:HG21	1:A:353:SER:HB2	1.97	0.47
1:B:296:ARG:NH1	1:B:296:ARG:HG3	2.29	0.47
1:B:380:ALA:H	1:B:391:ASN:HD22	1.62	0.46
1:B:88:GLY:HA2	1:B:284:GLY:O	2.15	0.46
1:B:111:ARG:HG3	4:B:1210:HOH:O	2.13	0.46
1:B:135:THR:O	1:B:156:ARG:HA	2.16	0.46
1:B:379:ASP:OD2	1:B:387:ASP:OD2	2.33	0.46
1:B:101:SER:O	1:B:444:ILE:HA	2.15	0.46
1:A:123:SER:OG	1:A:183:CYS:HA	2.15	0.46
1:A:360:VAL:CG2	1:A:383:TRP:HE3	2.28	0.46
1:B:228:SER:HB3	1:B:350:LYS:NZ	2.31	0.46
1:B:192:ILE:HG23	1:B:205:LEU:HD22	1.97	0.46
1:B:407:SER:HA	1:B:423:TRP:O	2.16	0.46
1:A:104:ASN:HA	4:A:1162:HOH:O	2.16	0.46

Continued on next page...

Continued from previous page...

Atom-1	Atom-2	Interatomic distance (Å)	Clash overlap (Å)
1:B:202:VAL:HG22	1:B:216:LYS:HG3	1.98	0.46
1:B:96:GLY:C	1:B:453:THR:HG21	2.35	0.46
1:A:100:LEU:HD22	1:A:447:CYS:SG	2.56	0.46
1:B:254:ILE:CG2	1:B:310:LEU:HG	2.46	0.45
1:B:182:ALA:O	1:B:229:GLU:HA	2.16	0.45
1:A:109:GLY:HA3	1:A:140:LEU:HD12	1.98	0.45
1:B:232:CYS:HA	1:B:237:CYS:HA	1.98	0.45
1:A:153:SER:HB2	1:A:154:PRO:HD2	1.99	0.45
1:B:192:ILE:HG23	1:B:205:LEU:CD2	2.46	0.45
1:A:248:ALA:HA	1:A:295:TRP:CD1	2.52	0.45
1:B:358:ASP:HB3	1:B:384:VAL:HG21	1.99	0.44
1:B:113:GLU:O	1:B:168:SER:HB2	2.18	0.44
1:B:115:PHE:HB3	1:B:135:THR:HG21	2.00	0.44
1:B:346:ARG:HG3	1:B:347:TYR:N	2.33	0.44
1:B:466:PHE:C	1:B:468:ILE:N	2.70	0.44
1:A:261:LYS:HD3	4:A:1264:HOH:O	2.17	0.44
1:B:300:ARG:O	1:B:317:VAL:HG23	2.16	0.44
1:A:115:PHE:O	1:A:117:ILE:HD13	2.18	0.44
1:A:118:ARG:HB2	1:A:156:ARG:NH1	2.33	0.44
1:A:301:PRO:HA	1:A:316:TYR:HA	2.00	0.44
1:A:207:TYR:CE1	1:A:208:ASN:ND2	2.86	0.44
1:A:270:ALA:O	1:A:273:PHE:HB2	2.17	0.44
1:B:219:LYS:NZ	4:B:1232:HOH:O	2.51	0.44
1:B:240:LEU:HA	1:B:253:LYS:O	2.18	0.43
1:B:328:PRO:HG3	1:B:342(A):ASN:HD22	1.83	0.43
1:B:411:SER:HB2	1:B:418:THR:HG22	2.00	0.43
1:B:466:PHE:C	1:B:468:ILE:H	2.21	0.43
1:A:381:ASN:O	1:A:383:TRP:N	2.51	0.43
1:B:159:MET:HB3	1:B:172:ARG:O	2.18	0.43
1:B:96:GLY:O	1:B:449:VAL:HG12	2.19	0.43
1:A:172:ARG:HG2	1:A:173:PHE:N	2.34	0.43
1:A:413:THR:C	1:A:415:ARG:H	2.21	0.43
1:B:219:LYS:HE2	1:B:251:PHE:CE2	2.53	0.43
1:B:416:ASN:N	1:B:416:ASN:OD1	2.52	0.43
1:A:235:GLU:CB	1:A:258:LYS:HE3	2.46	0.43
1:A:358:ASP:OD1	1:A:384:VAL:HG21	2.19	0.43
1:B:128:GLU:HG2	1:B:129:CYS:N	2.34	0.43
1:B:413:THR:CG2	1:B:414:GLY:H	2.20	0.43
1:B:158:LEU:HD22	1:B:180:ALA:HB1	2.00	0.43
1:A:412:ILE:HG22	1:A:413:THR:HG23	2.00	0.43
1:A:421:CYS:HB3	1:A:446:PHE:O	2.19	0.43

Continued on next page...

Continued from previous page...

Atom-1	Atom-2	Interatomic distance (Å)	Clash overlap (Å)
1:B:229:GLU:OE2	1:B:410:PHE:HA	2.19	0.43
1:B:214:THR:CG2	1:B:215:LEU:N	2.82	0.43
1:B:221:ASN:HB3	1:B:244:GLY:HA2	2.00	0.43
1:B:254:ILE:O	1:B:255:LEU:HD23	2.19	0.43
1:A:238:TYR:N	1:A:238:TYR:CD1	2.86	0.42
1:B:153:SER:HB2	1:B:154:PRO:HD2	2.00	0.42
1:B:250:ALA:HB3	1:B:252:TYR:CE2	2.54	0.42
1:A:335:GLY:HA2	1:A:341:ILE:CD1	2.48	0.42
1:B:248:ALA:HA	1:B:295:TRP:CD2	2.54	0.42
1:A:87:SER:CB	1:A:233:GLN:OE1	2.67	0.42
1:B:266:LYS:HB2	1:B:310:LEU:HD23	2.00	0.42
1:B:328:PRO:HG3	1:B:342(A):ASN:ND2	2.35	0.42
1:B:251:PHE:N	1:B:251:PHE:CD1	2.87	0.42
1:A:118:ARG:O	1:A:119:GLU:HB2	2.18	0.42
1:A:266:LYS:HE2	1:A:266:LYS:HB3	1.95	0.42
1:A:222:ILE:O	1:A:224:ARG:NH2	2.49	0.42
1:B:118:ARG:O	1:B:119:GLU:HB2	2.19	0.42
1:B:202:VAL:CG2	1:B:216:LYS:HG3	2.49	0.42
1:B:342:ASN:O	1:B:342(A):ASN:HB2	2.18	0.42
1:B:85:TYR:CD2	1:B:412(C):GLU:HG3	2.51	0.42
1:B:306:ASN:ND2	1:B:306:ASN:C	2.73	0.42
1:B:115:PHE:HB3	1:B:135:THR:CG2	2.50	0.42
1:A:146:ASN:ND2	2:A:1146:NAG:H1	2.35	0.42
1:A:121:PHE:HB3	1:A:423:TRP:CZ2	2.55	0.42
1:B:97:TRP:H	1:B:395:GLN:NE2	2.02	0.42
1:A:360:VAL:CG2	1:A:383:TRP:HB2	2.50	0.41
1:A:468:ILE:CG2	1:A:468:ILE:O	2.61	0.41
1:B:232:CYS:O	1:B:412(A):ARG:NH2	2.40	0.41
1:B:387:ASP:C	1:B:389:ASP:H	2.22	0.41
1:A:428:ARG:HB3	1:A:464:LEU:HD11	2.00	0.41
1:B:328:PRO:CG	1:B:342(A):ASN:HD22	2.33	0.41
1:B:397:ILE:O	1:B:457:SER:HA	2.20	0.41
1:B:102:LYS:NZ	1:B:459:PRO:O	2.52	0.41
1:B:117:ILE:HG13	1:B:133:PHE:CD1	2.55	0.41
1:A:116:VAL:HG13	1:A:440:SER:HB2	2.01	0.41
1:B:115:PHE:CG	1:B:135:THR:HG21	2.56	0.41
1:B:207:TYR:CE1	1:B:208:ASN:ND2	2.88	0.41
1:B:116:VAL:C	1:B:117:ILE:HD12	2.40	0.41
1:B:158:LEU:HD22	1:B:180:ALA:CB	2.50	0.41
1:B:428:ARG:NH1	1:B:433:GLU:OE2	2.50	0.41
1:A:149:VAL:HG12	1:A:150:LYS:N	2.36	0.41

Continued on next page...

Continued from previous page...

Atom-1	Atom-2	Interatomic distance (Å)	Clash overlap (Å)
1:B:252:TYR:OH	1:B:274:HIS:HA	2.21	0.41
1:B:346:ARG:O	1:B:347:TYR:O	2.37	0.41
1:A:174:GLU:HA	1:A:174:GLU:OE2	2.21	0.41
1:A:248:ALA:HA	1:A:295:TRP:CG	2.55	0.41
1:B:360:VAL:CG2	1:B:383:TRP:HB2	2.51	0.41
1:A:121:PHE:HB2	1:A:423:TRP:NE1	2.36	0.41
1:B:322:PHE:CE1	1:B:328:PRO:HG2	2.55	0.41
1:B:131:THR:O	1:B:160:SER:HA	2.20	0.41
1:B:205:LEU:HD13	1:B:257:ILE:HD13	2.02	0.41
1:A:118:ARG:HB2	1:A:156:ARG:HH11	1.86	0.40
1:A:205:LEU:N	1:A:205:LEU:HD22	2.36	0.40
1:A:225:THR:OG1	1:A:226:GLN:N	2.54	0.40
1:A:294:ASN:O	1:A:346:ARG:NH1	2.54	0.40
1:B:142:ASP:OD2	1:B:144:HIS:CD2	2.74	0.40
1:B:84:HIS:O	1:B:86:SER:N	2.55	0.40
1:A:146:ASN:HD21	2:A:1146:NAG:C1	2.34	0.40
1:A:136:GLN:HE22	1:A:156:ARG:HD2	1.82	0.40
1:A:87:SER:HB2	1:A:233:GLN:OE1	2.20	0.40
1:B:213:ASP:HB2	1:B:260:GLY:O	2.22	0.40
1:B:277:GLU:HB3	1:B:350:LYS:HD2	2.03	0.40
1:B:117:ILE:O	1:B:118:ARG:HD2	2.20	0.40
1:B:238:TYR:HA	1:B:255:LEU:O	2.20	0.40
1:A:284:GLY:O	1:A:285:GLU:HB2	2.21	0.40
1:A:325:ASN:O	1:A:348:GLY:HA2	2.21	0.40
1:A:270:ALA:HB1	1:A:273:PHE:CB	2.51	0.40
1:A:350:LYS:HG2	1:A:407:SER:O	2.22	0.40
1:B:148:THR:O	1:B:149:VAL:C	2.59	0.40
1:B:415:ARG:HD3	4:B:1257:HOH:O	2.20	0.40

There are no symmetry-related clashes.

5.3 Torsion angles [i](#)

5.3.1 Protein backbone [i](#)

In the following table, the Percentiles column shows the percent Ramachandran outliers of the chain as a percentile score with respect to all X-ray entries followed by that with respect to entries of similar resolution.

The Analysed column shows the number of residues for which the backbone conformation was analysed, and the total number of residues.

Mol	Chain	Analysed	Favoured	Allowed	Outliers	Percentiles	
1	A	386/390 (99%)	340 (88%)	34 (9%)	12 (3%)	4	14
1	B	386/390 (99%)	330 (86%)	43 (11%)	13 (3%)	3	13
All	All	772/780 (99%)	670 (87%)	77 (10%)	25 (3%)	4	13

All (25) Ramachandran outliers are listed below:

Mol	Chain	Res	Type
1	A	346	ARG
1	A	347	TYR
1	B	264	SER
1	B	319	SER
1	B	346	ARG
1	B	347	TYR
1	B	382	GLY
1	B	456	TRP
1	A	284	GLY
1	A	382	GLY
1	A	448	GLY
1	A	467	ASP
1	B	332	SER
1	B	448	GLY
1	A	432	LYS
1	A	456	TRP
1	B	149	VAL
1	B	449	VAL
1	A	264	SER
1	A	449	VAL
1	B	85	TYR
1	B	343	GLY
1	B	380	ALA
1	A	222	ILE
1	A	414	GLY

5.3.2 Protein sidechains [i](#)

In the following table, the Percentiles column shows the percent sidechain outliers of the chain as a percentile score with respect to all X-ray entries followed by that with respect to entries of similar resolution.

The Analysed column shows the number of residues for which the sidechain conformation was analysed, and the total number of residues.

Mol	Chain	Analysed	Rotameric	Outliers	Percentiles	
1	A	331/333 (99%)	317 (96%)	14 (4%)	30	63
1	B	331/333 (99%)	312 (94%)	19 (6%)	20	50
All	All	662/666 (99%)	629 (95%)	33 (5%)	24	56

All (33) residues with a non-rotameric sidechain are listed below:

Mol	Chain	Res	Type
1	A	89	LYS
1	A	146	ASN
1	A	170	ASN
1	A	205	LEU
1	A	221	ASN
1	A	230	CYS
1	A	247	ASP
1	A	252	TYR
1	A	265	VAL
1	A	296	ARG
1	A	387	ASP
1	A	389	ASP
1	A	400	ASN
1	A	411	SER
1	B	86	SER
1	B	89	LYS
1	B	135	THR
1	B	146	ASN
1	B	151	ASP
1	B	170	ASN
1	B	221	ASN
1	B	228	SER
1	B	229	GLU
1	B	230	CYS
1	B	247	ASP
1	B	252	TYR
1	B	285	GLU
1	B	296	ARG
1	B	306	ASN
1	B	387	ASP
1	B	400	ASN
1	B	412(C)	GLU
1	B	449	VAL

Some sidechains can be flipped to improve hydrogen bonding and reduce clashes. All (23) such sidechains are listed below:

Mol	Chain	Res	Type
1	A	104	ASN
1	A	170	ASN
1	A	221	ASN
1	A	226	GLN
1	A	249	GLN
1	A	294	ASN
1	A	306	ASN
1	A	391	ASN
1	A	395	GLN
1	A	400	ASN
1	B	104	ASN
1	B	144	HIS
1	B	146	ASN
1	B	170	ASN
1	B	221	ASN
1	B	226	GLN
1	B	249	GLN
1	B	294	ASN
1	B	306	ASN
1	B	342(A)	ASN
1	B	391	ASN
1	B	395	GLN
1	B	400	ASN

5.3.3 RNA [i](#)

There are no RNA molecules in this entry.

5.4 Non-standard residues in protein, DNA, RNA chains [i](#)

There are no non-standard protein/DNA/RNA residues in this entry.

5.5 Carbohydrates [i](#)

There are no monosaccharides in this entry.

5.6 Ligand geometry [i](#)

Of 4 ligands modelled in this entry, 2 are monoatomic - leaving 2 for Mogul analysis.

In the following table, the Counts columns list the number of bonds (or angles) for which Mogul statistics could be retrieved, the number of bonds (or angles) that are observed in the model and

the number of bonds (or angles) that are defined in the Chemical Component Dictionary. The Link column lists molecule types, if any, to which the group is linked. The Z score for a bond length (or angle) is the number of standard deviations the observed value is removed from the expected value. A bond length (or angle) with $|Z| > 2$ is considered an outlier worth inspection. RMSZ is the root-mean-square of all Z scores of the bond lengths (or angles).

Mol	Type	Chain	Res	Link	Bond lengths			Bond angles		
					Counts	RMSZ	# Z > 2	Counts	RMSZ	# Z > 2
2	NAG	A	1146	-	15,15,15	0.93	0	21,21,21	1.22	2 (9%)
2	NAG	B	1147	-	15,15,15	0.56	0	21,21,21	0.69	0

In the following table, the Chirals column lists the number of chiral outliers, the number of chiral centers analysed, the number of these observed in the model and the number defined in the Chemical Component Dictionary. Similar counts are reported in the Torsion and Rings columns. '-' means no outliers of that kind were identified.

Mol	Type	Chain	Res	Link	Chirals	Torsions	Rings
2	NAG	A	1146	-	1/1/6/7	1/6/26/26	0/1/1/1
2	NAG	B	1147	-	1/1/6/7	2/6/26/26	0/1/1/1

There are no bond length outliers.

All (2) bond angle outliers are listed below:

Mol	Chain	Res	Type	Atoms	Z	Observed($^{\circ}$)	Ideal($^{\circ}$)
2	A	1146	NAG	C6-C5-C4	2.72	119.38	113.00
2	A	1146	NAG	C4-C3-C2	2.70	114.30	110.34

All (2) chirality outliers are listed below:

Mol	Chain	Res	Type	Atom
2	A	1146	NAG	C1
2	B	1147	NAG	C1

All (3) torsion outliers are listed below:

Mol	Chain	Res	Type	Atoms
2	B	1147	NAG	O5-C5-C6-O6
2	B	1147	NAG	C4-C5-C6-O6
2	A	1146	NAG	C4-C5-C6-O6

There are no ring outliers.

2 monomers are involved in 5 short contacts:

Mol	Chain	Res	Type	Clashes	Symm-Clashes
2	A	1146	NAG	2	0
2	B	1147	NAG	3	0

5.7 Other polymers [i](#)

There are no such residues in this entry.

5.8 Polymer linkage issues [i](#)

There are no chain breaks in this entry.

6 Fit of model and data [i](#)

6.1 Protein, DNA and RNA chains [i](#)

In the following table, the column labelled '#RSRZ> 2' contains the number (and percentage) of RSRZ outliers, followed by percent RSRZ outliers for the chain as percentile scores relative to all X-ray entries and entries of similar resolution. The OWAB column contains the minimum, median, 95th percentile and maximum values of the occupancy-weighted average B-factor per residue. The column labelled 'Q< 0.9' lists the number of (and percentage) of residues with an average occupancy less than 0.9.

Mol	Chain	Analysed	<RSRZ>	#RSRZ>2	OWAB(Å ²)	Q<0.9
1	A	388/390 (99%)	-0.67	3 (0%) 86 81	8, 18, 31, 47	0
1	B	388/390 (99%)	-0.50	3 (0%) 86 81	12, 23, 36, 49	0
All	All	776/780 (99%)	-0.59	6 (0%) 86 81	8, 20, 34, 49	0

All (6) RSRZ outliers are listed below:

Mol	Chain	Res	Type	RSRZ
1	B	82	VAL	5.0
1	A	82	VAL	4.4
1	B	342(A)	ASN	3.0
1	A	148	THR	2.7
1	A	387	ASP	2.1
1	B	148	THR	2.1

6.2 Non-standard residues in protein, DNA, RNA chains [i](#)

There are no non-standard protein/DNA/RNA residues in this entry.

6.3 Carbohydrates [i](#)

There are no monosaccharides in this entry.

6.4 Ligands [i](#)

In the following table, the Atoms column lists the number of modelled atoms in the group and the number defined in the chemical component dictionary. The B-factors column lists the minimum, median, 95th percentile and maximum values of B factors of atoms in the group. The column labelled 'Q< 0.9' lists the number of atoms with occupancy less than 0.9.

Mol	Type	Chain	Res	Atoms	RSCC	RSR	B-factors(\AA^2)	Q<0.9
2	NAG	A	1146	15/15	0.42	0.63	43,46,48,54	0
2	NAG	B	1147	15/15	0.48	0.63	42,44,48,51	0
3	CA	B	993	1/1	0.92	0.08	26,26,26,26	0
3	CA	A	995	1/1	0.92	0.08	19,19,19,19	0

6.5 Other polymers [i](#)

There are no such residues in this entry.