



# wwPDB X-ray Structure Validation Summary Report ⓘ

Aug 27, 2023 – 11:01 AM EDT

PDB ID : 3HTH  
Title : Crystal structure of multidrug binding protein EbrR complexed with proflavin  
Authors : Dong, J.; Ni, L.; Schumacher, M.; Brennan, R.  
Deposited on : 2009-06-11  
Resolution : 2.70 Å(reported)

This is a wwPDB X-ray Structure Validation Summary Report for a publicly released PDB entry.

We welcome your comments at [validation@mail.wwpdb.org](mailto:validation@mail.wwpdb.org)

A user guide is available at

<https://www.wwpdb.org/validation/2017/XrayValidationReportHelp>

with specific help available everywhere you see the ⓘ symbol.

The types of validation reports are described at

<http://www.wwpdb.org/validation/2017/FAQs#types>.

---

The following versions of software and data (see [references ⓘ](#)) were used in the production of this report:

MolProbity : 4.02b-467  
Mogul : 1.8.5 (274361), CSD as541be (2020)  
Xtriage (Phenix) : 1.13  
EDS : 2.35  
Percentile statistics : 20191225.v01 (using entries in the PDB archive December 25th 2019)  
Refmac : 5.8.0158  
CCP4 : 7.0.044 (Gargrove)  
Ideal geometry (proteins) : Engh & Huber (2001)  
Ideal geometry (DNA, RNA) : Parkinson et al. (1996)  
Validation Pipeline (wwPDB-VP) : 2.35

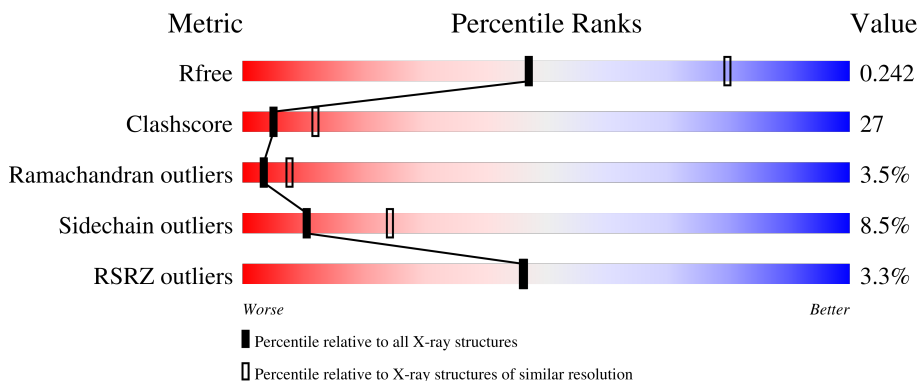
# 1 Overall quality at a glance i

The following experimental techniques were used to determine the structure:

*X-RAY DIFFRACTION*

The reported resolution of this entry is 2.70 Å.

Percentile scores (ranging between 0-100) for global validation metrics of the entry are shown in the following graphic. The table shows the number of entries on which the scores are based.



Metric	Whole archive (#Entries)	Similar resolution (#Entries, resolution range(Å))
$R_{free}$	130704	2808 (2.70-2.70)
Clashscore	141614	3122 (2.70-2.70)
Ramachandran outliers	138981	3069 (2.70-2.70)
Sidechain outliers	138945	3069 (2.70-2.70)
RSRZ outliers	127900	2737 (2.70-2.70)

The table below summarises the geometric issues observed across the polymeric chains and their fit to the electron density. The red, orange, yellow and green segments of the lower bar indicate the fraction of residues that contain outliers for  $\geq 3$ , 2, 1 and 0 types of geometric quality criteria respectively. A grey segment represents the fraction of residues that are not modelled. The numeric value for each fraction is indicated below the corresponding segment, with a dot representing fractions  $\leq 5\%$ . The upper red bar (where present) indicates the fraction of residues that have poor fit to the electron density. The numeric value is given above the bar.

Mol	Chain	Length	Quality of chain
1	A	217	<div style="display: flex; align-items: center;"> <div style="width: 2%; height: 10px; background-color: red; margin-right: 2px;"></div> <div style="width: 44%; height: 10px; background-color: green; margin-right: 2px;"></div> <div style="width: 29%; height: 10px; background-color: yellow; margin-right: 2px;"></div> <div style="width: 5%; height: 10px; background-color: orange; margin-right: 2px;"></div> <div style="width: 21%; height: 10px; background-color: grey;"></div> </div> <p style="font-size: small; margin-top: 5px;">2% 44% 29% 5% 21%</p>
1	B	217	<div style="display: flex; align-items: center;"> <div style="width: 2%; height: 10px; background-color: red; margin-right: 2px;"></div> <div style="width: 50%; height: 10px; background-color: green; margin-right: 2px;"></div> <div style="width: 25%; height: 10px; background-color: yellow; margin-right: 2px;"></div> <div style="width: 20%; height: 10px; background-color: grey;"></div> </div> <p style="font-size: small; margin-top: 5px;">2% 50% 25% • 20%</p>
1	C	217	<div style="display: flex; align-items: center;"> <div style="width: 3%; height: 10px; background-color: red; margin-right: 2px;"></div> <div style="width: 39%; height: 10px; background-color: green; margin-right: 2px;"></div> <div style="width: 34%; height: 10px; background-color: yellow; margin-right: 2px;"></div> <div style="width: 22%; height: 10px; background-color: grey;"></div> </div> <p style="font-size: small; margin-top: 5px;">3% 39% 34% •• 22%</p>

## 2 Entry composition i

There are 4 unique types of molecules in this entry. The entry contains 4012 atoms, of which 0 are hydrogens and 0 are deuteriums.

In the tables below, the ZeroOcc column contains the number of atoms modelled with zero occupancy, the AltConf column contains the number of residues with at least one atom in alternate conformation and the Trace column contains the number of residues modelled with at most 2 atoms.

- Molecule 1 is a protein called EbrA repressor.

Mol	Chain	Residues	Atoms					ZeroOcc	AltConf	Trace
			Total	C	N	O	S			
1	A	171	1296	815	233	246	2	0	0	0
1	B	173	1314	825	237	250	2	0	0	0
1	C	170	1286	807	232	245	2	0	0	0

There are 60 discrepancies between the modelled and reference sequences:

Chain	Residue	Modelled	Actual	Comment	Reference
A	-19	MET	-	expression tag	UNP Q79SH7
A	-18	GLY	-	expression tag	UNP Q79SH7
A	-17	SER	-	expression tag	UNP Q79SH7
A	-16	SER	-	expression tag	UNP Q79SH7
A	-15	HIS	-	expression tag	UNP Q79SH7
A	-14	HIS	-	expression tag	UNP Q79SH7
A	-13	HIS	-	expression tag	UNP Q79SH7
A	-12	HIS	-	expression tag	UNP Q79SH7
A	-11	HIS	-	expression tag	UNP Q79SH7
A	-10	HIS	-	expression tag	UNP Q79SH7
A	-9	SER	-	expression tag	UNP Q79SH7
A	-8	SER	-	expression tag	UNP Q79SH7
A	-7	GLY	-	expression tag	UNP Q79SH7
A	-6	LEU	-	expression tag	UNP Q79SH7
A	-5	VAL	-	expression tag	UNP Q79SH7
A	-4	PRO	-	expression tag	UNP Q79SH7
A	-3	ARG	-	expression tag	UNP Q79SH7
A	-2	GLY	-	expression tag	UNP Q79SH7
A	-1	SER	-	expression tag	UNP Q79SH7
A	0	HIS	-	expression tag	UNP Q79SH7
B	-19	MET	-	expression tag	UNP Q79SH7
B	-18	GLY	-	expression tag	UNP Q79SH7
B	-17	SER	-	expression tag	UNP Q79SH7

*Continued on next page...*

*Continued from previous page...*

Chain	Residue	Modelled	Actual	Comment	Reference
B	-16	SER	-	expression tag	UNP Q79SH7
B	-15	HIS	-	expression tag	UNP Q79SH7
B	-14	HIS	-	expression tag	UNP Q79SH7
B	-13	HIS	-	expression tag	UNP Q79SH7
B	-12	HIS	-	expression tag	UNP Q79SH7
B	-11	HIS	-	expression tag	UNP Q79SH7
B	-10	HIS	-	expression tag	UNP Q79SH7
B	-9	SER	-	expression tag	UNP Q79SH7
B	-8	SER	-	expression tag	UNP Q79SH7
B	-7	GLY	-	expression tag	UNP Q79SH7
B	-6	LEU	-	expression tag	UNP Q79SH7
B	-5	VAL	-	expression tag	UNP Q79SH7
B	-4	PRO	-	expression tag	UNP Q79SH7
B	-3	ARG	-	expression tag	UNP Q79SH7
B	-2	GLY	-	expression tag	UNP Q79SH7
B	-1	SER	-	expression tag	UNP Q79SH7
B	0	HIS	-	expression tag	UNP Q79SH7
C	-19	MET	-	expression tag	UNP Q79SH7
C	-18	GLY	-	expression tag	UNP Q79SH7
C	-17	SER	-	expression tag	UNP Q79SH7
C	-16	SER	-	expression tag	UNP Q79SH7
C	-15	HIS	-	expression tag	UNP Q79SH7
C	-14	HIS	-	expression tag	UNP Q79SH7
C	-13	HIS	-	expression tag	UNP Q79SH7
C	-12	HIS	-	expression tag	UNP Q79SH7
C	-11	HIS	-	expression tag	UNP Q79SH7
C	-10	HIS	-	expression tag	UNP Q79SH7
C	-9	SER	-	expression tag	UNP Q79SH7
C	-8	SER	-	expression tag	UNP Q79SH7
C	-7	GLY	-	expression tag	UNP Q79SH7
C	-6	LEU	-	expression tag	UNP Q79SH7
C	-5	VAL	-	expression tag	UNP Q79SH7
C	-4	PRO	-	expression tag	UNP Q79SH7
C	-3	ARG	-	expression tag	UNP Q79SH7
C	-2	GLY	-	expression tag	UNP Q79SH7
C	-1	SER	-	expression tag	UNP Q79SH7
C	0	HIS	-	expression tag	UNP Q79SH7

- Molecule 2 is NICKEL (II) ION (three-letter code: NI) (formula: Ni).

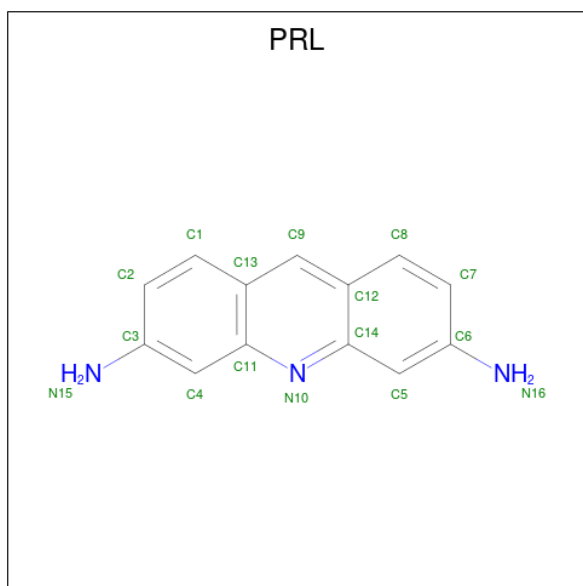
*Continued on next page...*

Continued from previous page...

Mol	Chain	Residues	Atoms	ZeroOcc	AltConf
-----	-------	----------	-------	---------	---------

Mol	Chain	Residues	Atoms	ZeroOcc	AltConf
2	A	2	Total Ni 2 2	0	0
2	C	1	Total Ni 1 1	0	0

- Molecule 3 is PROFLAVIN (three-letter code: PRL) (formula: C<sub>13</sub>H<sub>11</sub>N<sub>3</sub>).



Mol	Chain	Residues	Atoms	ZeroOcc	AltConf
3	A	1	Total C N 16 13 3	0	0
3	B	1	Total C N 16 13 3	0	0

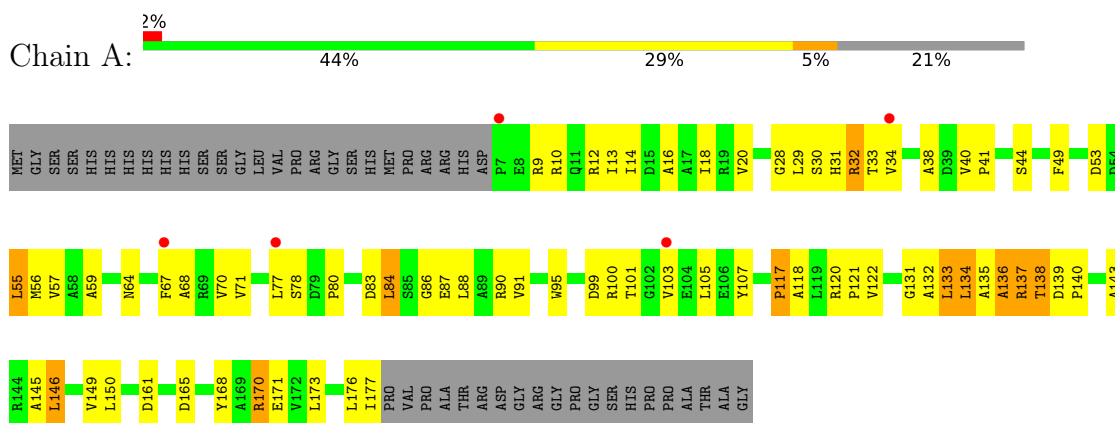
- Molecule 4 is water.

Mol	Chain	Residues	Atoms	ZeroOcc	AltConf
4	A	27	Total O 27 27	0	0
4	B	27	Total O 27 27	0	0
4	C	27	Total O 27 27	0	0

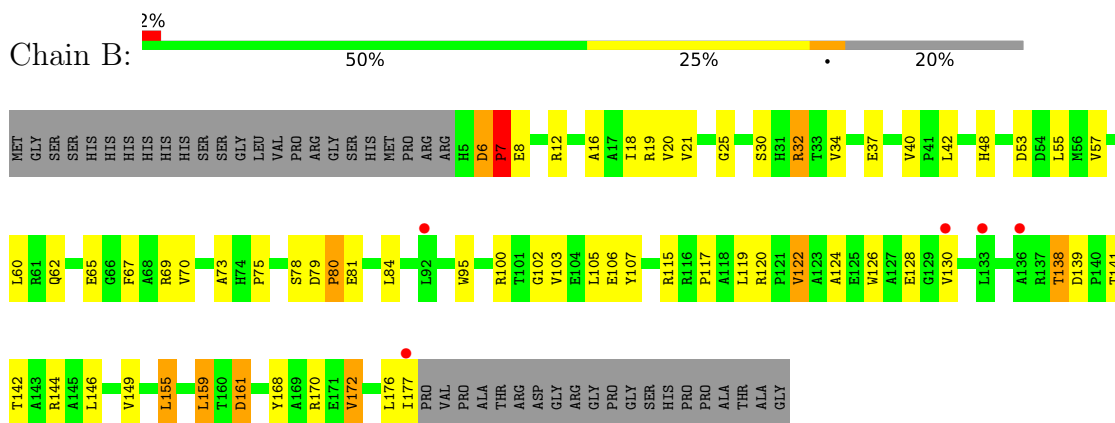
### 3 Residue-property plots [i](#)

These plots are drawn for all protein, RNA, DNA and oligosaccharide chains in the entry. The first graphic for a chain summarises the proportions of the various outlier classes displayed in the second graphic. The second graphic shows the sequence view annotated by issues in geometry and electron density. Residues are color-coded according to the number of geometric quality criteria for which they contain at least one outlier: green = 0, yellow = 1, orange = 2 and red = 3 or more. A red dot above a residue indicates a poor fit to the electron density ( $RSRZ > 2$ ). Stretches of 2 or more consecutive residues without any outlier are shown as a green connector. Residues present in the sample, but not in the model, are shown in grey.

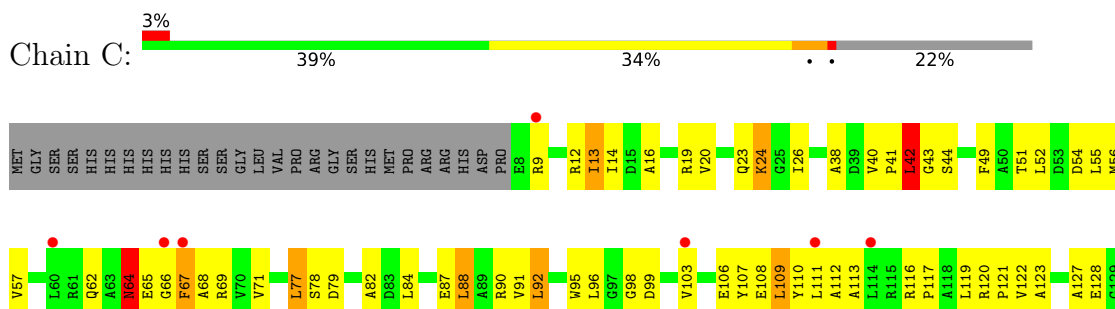
- Molecule 1: EbrA repressor

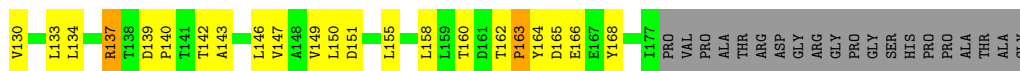


- Molecule 1: EbrA repressor



- Molecule 1: EbrA repressor





## 4 Data and refinement statistics i

Property	Value	Source
Space group	P 32 2 1	Depositor
Cell constants a, b, c, $\alpha$ , $\beta$ , $\gamma$	99.72Å 99.72Å 133.73Å 90.00° 90.00° 120.00°	Depositor
Resolution (Å)	86.39 – 2.70 86.36 – 2.70	Depositor EDS
% Data completeness (in resolution range)	100.0 (86.39-2.70) 100.0 (86.36-2.70)	Depositor EDS
$R_{merge}$	0.06	Depositor
$R_{sym}$	(Not available)	Depositor
$\langle I/\sigma(I) \rangle$ <sup>1</sup>	2.90 (at 2.69Å)	Xtrriage
Refinement program	CNS 1.1	Depositor
R, $R_{free}$	0.228 , 0.277 0.234 , 0.242	Depositor DCC
$R_{free}$ test set	1108 reflections (5.12%)	wwPDB-VP
Wilson B-factor (Å <sup>2</sup> )	66.1	Xtrriage
Anisotropy	0.418	Xtrriage
Bulk solvent $k_{sol}$ (e/Å <sup>3</sup> ), $B_{sol}$ (Å <sup>2</sup> )	0.33 , 57.0	EDS
L-test for twinning <sup>2</sup>	$\langle  L  \rangle = 0.49$ , $\langle L^2 \rangle = 0.32$	Xtrriage
Estimated twinning fraction	0.036 for -h,-k,l	Xtrriage
$F_o, F_c$ correlation	0.95	EDS
Total number of atoms	4012	wwPDB-VP
Average B, all atoms (Å <sup>2</sup> )	74.0	wwPDB-VP

Xtrriage's analysis on translational NCS is as follows: *The largest off-origin peak in the Patterson function is 6.28% of the height of the origin peak. No significant pseudotranslation is detected.*

<sup>1</sup>Intensities estimated from amplitudes.

<sup>2</sup>Theoretical values of  $\langle |L| \rangle$ ,  $\langle L^2 \rangle$  for acentric reflections are 0.5, 0.333 respectively for untwinned datasets, and 0.375, 0.2 for perfectly twinned datasets.



## 5 Model quality [i](#)

### 5.1 Standard geometry [i](#)

Bond lengths and bond angles in the following residue types are not validated in this section: NI, PRL

The Z score for a bond length (or angle) is the number of standard deviations the observed value is removed from the expected value. A bond length (or angle) with  $|Z| > 5$  is considered an outlier worth inspection. RMSZ is the root-mean-square of all Z scores of the bond lengths (or angles).

Mol	Chain	Bond lengths		Bond angles	
		RMSZ	$\# Z  > 5$	RMSZ	$\# Z  > 5$
1	A	0.37	0/1317	0.62	0/1796
1	B	0.75	7/1336 (0.5%)	0.67	1/1823 (0.1%)
1	C	0.39	0/1306	0.65	0/1781
All	All	0.53	7/3959 (0.2%)	0.65	1/5400 (0.0%)

Chiral center outliers are detected by calculating the chiral volume of a chiral center and verifying if the center is modelled as a planar moiety or with the opposite hand. A planarity outlier is detected by checking planarity of atoms in a peptide group, atoms in a mainchain group or atoms of a sidechain that are expected to be planar.

Mol	Chain	#Chirality outliers	#Planarity outliers
1	B	0	1

The worst 5 of 7 bond length outliers are listed below:

Mol	Chain	Res	Type	Atoms	Z	Observed(Å)	Ideal(Å)
1	B	8	GLU	CB-CG	-10.50	1.32	1.52
1	B	8	GLU	C-O	-8.74	1.06	1.23
1	B	8	GLU	CG-CD	-8.53	1.39	1.51
1	B	8	GLU	CA-CB	-8.47	1.35	1.53
1	B	8	GLU	CA-C	-8.05	1.32	1.52

All (1) bond angle outliers are listed below:

Mol	Chain	Res	Type	Atoms	Z	Observed(°)	Ideal(°)
1	B	7	PRO	O-C-N	-5.99	113.12	122.70

There are no chirality outliers.

All (1) planarity outliers are listed below:

Mol	Chain	Res	Type	Group
1	B	7	PRO	Mainchain

## 5.2 Too-close contacts [i](#)

In the following table, the Non-H and H(model) columns list the number of non-hydrogen atoms and hydrogen atoms in the chain respectively. The H(added) column lists the number of hydrogen atoms added and optimized by MolProbity. The Clashes column lists the number of clashes within the asymmetric unit, whereas Symm-Clashes lists symmetry-related clashes.

Mol	Chain	Non-H	H(model)	H(added)	Clashes	Symm-Clashes
1	A	1296	0	1307	74	0
1	B	1314	0	1317	62	0
1	C	1286	0	1290	82	0
2	A	2	0	0	0	0
2	C	1	0	0	0	0
3	A	16	0	11	0	0
3	B	16	0	11	2	0
4	A	27	0	0	0	0
4	B	27	0	0	1	0
4	C	27	0	0	5	0
All	All	4012	0	3936	212	0

The all-atom clashscore is defined as the number of clashes found per 1000 atoms (including hydrogen atoms). The all-atom clashscore for this structure is 27.

The worst 5 of 212 close contacts within the same asymmetric unit are listed below, sorted by their clash magnitude.

Atom-1	Atom-2	Interatomic distance (Å)	Clash overlap (Å)
1:C:42:LEU:HD12	1:C:42:LEU:H	1.29	0.95
1:C:164:TYR:HB2	4:C:327:HOH:O	1.71	0.89
1:C:84:LEU:HD22	1:C:137:ARG:HG2	1.56	0.87
1:C:103:VAL:HG12	1:C:158:LEU:HD11	1.57	0.85
1:A:57:VAL:HG13	1:A:122:VAL:HG21	1.58	0.84

There are no symmetry-related clashes.

## 5.3 Torsion angles [i](#)

### 5.3.1 Protein backbone [i](#)

In the following table, the Percentiles column shows the percent Ramachandran outliers of the chain as a percentile score with respect to all X-ray entries followed by that with respect to entries of similar resolution.

The Analysed column shows the number of residues for which the backbone conformation was analysed, and the total number of residues.

Mol	Chain	Analysed	Favoured	Allowed	Outliers	Percentiles	
1	A	169/217 (78%)	144 (85%)	17 (10%)	8 (5%)	2	4
1	B	171/217 (79%)	159 (93%)	9 (5%)	3 (2%)	8	21
1	C	168/217 (77%)	140 (83%)	21 (12%)	7 (4%)	3	5
All	All	508/651 (78%)	443 (87%)	47 (9%)	18 (4%)	3	8

5 of 18 Ramachandran outliers are listed below:

Mol	Chain	Res	Type
1	A	138	THR
1	C	24	LYS
1	C	67	PHE
1	C	163	PRO
1	A	99	ASP

### 5.3.2 Protein sidechains [i](#)

In the following table, the Percentiles column shows the percent sidechain outliers of the chain as a percentile score with respect to all X-ray entries followed by that with respect to entries of similar resolution.

The Analysed column shows the number of residues for which the sidechain conformation was analysed, and the total number of residues.

Mol	Chain	Analysed	Rotameric	Outliers	Percentiles	
1	A	129/165 (78%)	115 (89%)	14 (11%)	6	14
1	B	131/165 (79%)	121 (92%)	10 (8%)	13	30
1	C	127/165 (77%)	118 (93%)	9 (7%)	14	34
All	All	387/495 (78%)	354 (92%)	33 (8%)	10	24

5 of 33 residues with a non-rotameric sidechain are listed below:

Mol	Chain	Res	Type
1	C	77	LEU
1	C	88	LEU
1	C	137	ARG
1	A	171	GLU
1	A	170	ARG

Sometimes sidechains can be flipped to improve hydrogen bonding and reduce clashes. All (3) such sidechains are listed below:

Mol	Chain	Res	Type
1	A	64	ASN
1	A	156	GLN
1	B	48	HIS

### 5.3.3 RNA [i](#)

There are no RNA molecules in this entry.

## 5.4 Non-standard residues in protein, DNA, RNA chains [i](#)

There are no non-standard protein/DNA/RNA residues in this entry.

## 5.5 Carbohydrates [i](#)

There are no monosaccharides in this entry.

## 5.6 Ligand geometry [i](#)

Of 5 ligands modelled in this entry, 3 are monoatomic - leaving 2 for Mogul analysis.

In the following table, the Counts columns list the number of bonds (or angles) for which Mogul statistics could be retrieved, the number of bonds (or angles) that are observed in the model and the number of bonds (or angles) that are defined in the Chemical Component Dictionary. The Link column lists molecule types, if any, to which the group is linked. The Z score for a bond length (or angle) is the number of standard deviations the observed value is removed from the expected value. A bond length (or angle) with  $|Z| > 2$  is considered an outlier worth inspection. RMSZ is the root-mean-square of all Z scores of the bond lengths (or angles).

Mol	Type	Chain	Res	Link	Bond lengths			Bond angles		
					Counts	RMSZ	# $ Z  > 2$	Counts	RMSZ	# $ Z  > 2$
3	PRL	B	201	-	18,18,18	2.22	2 (11%)	26,26,26	1.12	2 (7%)
3	PRL	A	201	-	18,18,18	2.34	3 (16%)	26,26,26	1.13	2 (7%)

In the following table, the Chirals column lists the number of chiral outliers, the number of chiral centers analysed, the number of these observed in the model and the number defined in the Chemical Component Dictionary. Similar counts are reported in the Torsion and Rings columns. '-' means no outliers of that kind were identified.

Mol	Type	Chain	Res	Link	Chirals	Torsions	Rings
3	PRL	B	201	-	-	-	0/3/3/3
3	PRL	A	201	-	-	-	0/3/3/3

All (5) bond length outliers are listed below:

Mol	Chain	Res	Type	Atoms	Z	Observed(Å)	Ideal(Å)
3	A	201	PRL	C13-C11	6.34	1.52	1.42
3	A	201	PRL	C12-C14	6.03	1.51	1.42
3	B	201	PRL	C12-C14	5.95	1.51	1.42
3	B	201	PRL	C13-C11	5.66	1.51	1.42
3	A	201	PRL	C2-C3	2.02	1.44	1.40

All (4) bond angle outliers are listed below:

Mol	Chain	Res	Type	Atoms	Z	Observed(°)	Ideal(°)
3	B	201	PRL	C14-N10-C11	2.96	122.04	117.86
3	A	201	PRL	C14-N10-C11	2.83	121.85	117.86
3	A	201	PRL	C13-C9-C12	-2.58	118.19	121.92
3	B	201	PRL	C13-C9-C12	-2.35	118.51	121.92

There are no chirality outliers.

There are no torsion outliers.

There are no ring outliers.

1 monomer is involved in 2 short contacts:

Mol	Chain	Res	Type	Clashes	Symm-Clashes
3	B	201	PRL	2	0

## 5.7 Other polymers [i](#)

There are no such residues in this entry.

## 5.8 Polymer linkage issues [i](#)

There are no chain breaks in this entry.

## 6 Fit of model and data [i](#)

### 6.1 Protein, DNA and RNA chains [i](#)

In the following table, the column labelled '#RSRZ > 2' contains the number (and percentage) of RSRZ outliers, followed by percent RSRZ outliers for the chain as percentile scores relative to all X-ray entries and entries of similar resolution. The OWAB column contains the minimum, median, 95<sup>th</sup> percentile and maximum values of the occupancy-weighted average B-factor per residue. The column labelled 'Q < 0.9' lists the number of (and percentage) of residues with an average occupancy less than 0.9.

Mol	Chain	Analysed	<RSRZ>	#RSRZ>2	OWAB(Å <sup>2</sup> )	Q<0.9
1	A	171/217 (78%)	0.42	5 (2%) 51 52	50, 78, 102, 114	0
1	B	173/217 (79%)	0.22	5 (2%) 51 52	28, 67, 95, 114	0
1	C	170/217 (78%)	0.40	7 (4%) 37 36	51, 76, 96, 112	0
All	All	514/651 (78%)	0.35	17 (3%) 46 46	28, 73, 97, 114	0

The worst 5 of 17 RSRZ outliers are listed below:

Mol	Chain	Res	Type	RSRZ
1	A	7	PRO	4.3
1	C	66	GLY	4.2
1	C	9	ARG	3.3
1	A	77	LEU	3.1
1	B	133	LEU	3.1

### 6.2 Non-standard residues in protein, DNA, RNA chains [i](#)

There are no non-standard protein/DNA/RNA residues in this entry.

### 6.3 Carbohydrates [i](#)

There are no monosaccharides in this entry.

### 6.4 Ligands [i](#)

In the following table, the Atoms column lists the number of modelled atoms in the group and the number defined in the chemical component dictionary. The B-factors column lists the minimum, median, 95<sup>th</sup> percentile and maximum values of B factors of atoms in the group. The column labelled 'Q < 0.9' lists the number of atoms with occupancy less than 0.9.

Mol	Type	Chain	Res	Atoms	RSCC	RSR	B-factors( $\text{\AA}^2$ )	Q<0.9
3	PRL	B	201	16/16	0.88	0.27	99,101,103,103	0
3	PRL	A	201	16/16	0.94	0.22	63,64,67,67	0
2	NI	A	199	1/1	0.94	0.05	88,88,88,88	1
2	NI	C	200	1/1	0.98	0.22	63,63,63,63	1
2	NI	A	200	1/1	0.99	0.19	73,73,73,73	0

## 6.5 Other polymers [i](#)

There are no such residues in this entry.