



Full wwPDB X-ray Structure Validation Report ⓘ

Aug 10, 2020 – 06:25 AM BST

PDB ID : 6HTN
Title : Structure of a fucose lectin from *Kordia zhangzhouensis* in complex with methyl-fucoside
Authors : Varrot, A.
Deposited on : 2018-10-04
Resolution : 1.55 Å(reported)

This is a Full wwPDB X-ray Structure Validation Report for a publicly released PDB entry.

We welcome your comments at validation@mail.wwpdb.org

A user guide is available at

<https://www.wwpdb.org/validation/2017/XrayValidationReportHelp>

with specific help available everywhere you see the ⓘ symbol.

The following versions of software and data (see [references ⓘ](#)) were used in the production of this report:

MolProbity : 4.02b-467
Mogul : 1.8.5 (274361), CSD as541be (2020)
Xtriage (Phenix) : 1.13
EDS : 2.13.1
buster-report : 1.1.7 (2018)
Percentile statistics : 20191225.v01 (using entries in the PDB archive December 25th 2019)
Refmac : 5.8.0158
CCP4 : 7.0.044 (Gargrove)
Ideal geometry (proteins) : Engh & Huber (2001)
Ideal geometry (DNA, RNA) : Parkinson et al. (1996)
Validation Pipeline (wwPDB-VP) : 2.13.1

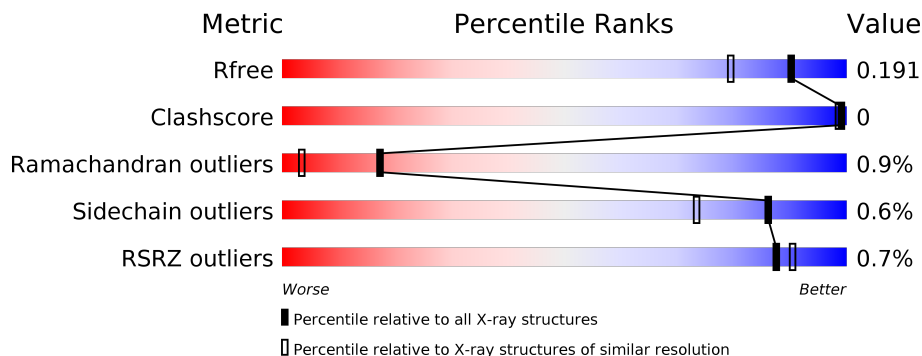
1 Overall quality at a glance

The following experimental techniques were used to determine the structure:

X-RAY DIFFRACTION

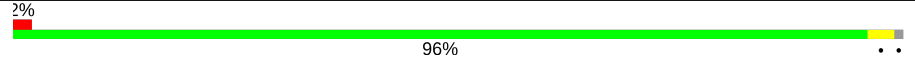
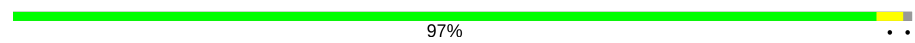
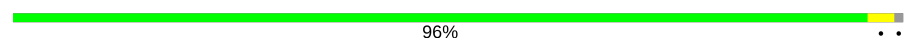
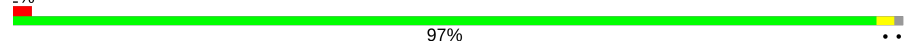
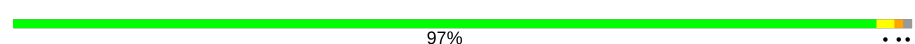

The reported resolution of this entry is 1.55 Å.

Percentile scores (ranging between 0-100) for global validation metrics of the entry are shown in the following graphic. The table shows the number of entries on which the scores are based.



Metric	Whole archive (#Entries)	Similar resolution (#Entries, resolution range(Å))
R_{free}	130704	1483 (1.56-1.56)
Clashscore	141614	1529 (1.56-1.56)
Ramachandran outliers	138981	1498 (1.56-1.56)
Sidechain outliers	138945	1495 (1.56-1.56)
RSRZ outliers	127900	1465 (1.56-1.56)

The table below summarises the geometric issues observed across the polymeric chains and their fit to the electron density. The red, orange, yellow and green segments on the lower bar indicate the fraction of residues that contain outliers for ≥ 3 , 2, 1 and 0 types of geometric quality criteria respectively. A grey segment represents the fraction of residues that are not modelled. The numeric value for each fraction is indicated below the corresponding segment, with a dot representing fractions $\leq 5\%$. The upper red bar (where present) indicates the fraction of residues that have poor fit to the electron density. The numeric value is given above the bar.

Mol	Chain	Length	Quality of chain
1	A	144	 2% 96%
1	B	144	 97%
1	C	144	 96%
1	D	144	 2% 97%
1	E	144	 97%
1	F	144	 96%

2 Entry composition i

There are 6 unique types of molecules in this entry. The entry contains 8656 atoms, of which 0 are hydrogens and 0 are deuteriums.

In the tables below, the ZeroOcc column contains the number of atoms modelled with zero occupancy, the AltConf column contains the number of residues with at least one atom in alternate conformation and the Trace column contains the number of residues modelled with at most 2 atoms.

- Molecule 1 is a protein called Fucose-binding lectin.

Mol	Chain	Residues	Atoms					ZeroOcc	AltConf	Trace
			Total	C	N	O	S			
1	A	143	1167	743	195	226	3	0	4	0
1	B	143	1171	744	197	227	3	0	4	0
1	C	143	1169	743	196	227	3	0	4	0
1	D	143	1160	735	196	226	3	0	3	0
1	E	143	1184	752	198	231	3	0	6	0
1	F	143	1174	745	197	229	3	0	5	0

There are 18 discrepancies between the modelled and reference sequences:

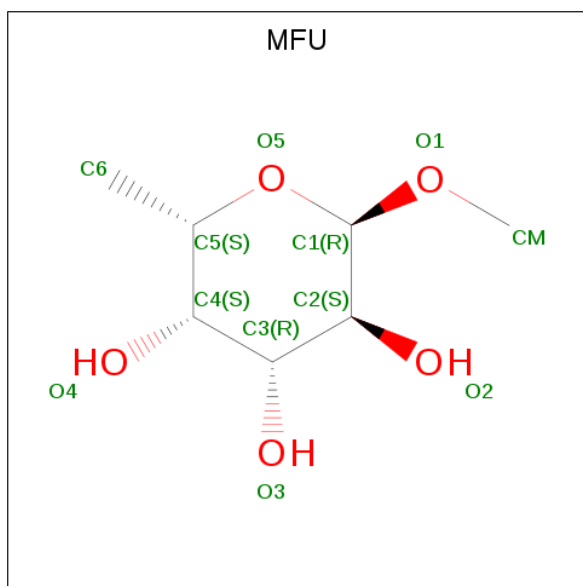
Chain	Residue	Modelled	Actual	Comment	Reference
A	7	LEU	VAL	conflict	UNP A0A2T6C3M6
A	74	ASP	ASN	conflict	UNP A0A2T6C3M6
A	?	-	SER	deletion	UNP A0A2T6C3M6
B	7	LEU	VAL	conflict	UNP A0A2T6C3M6
B	74	ASP	ASN	conflict	UNP A0A2T6C3M6
B	?	-	SER	deletion	UNP A0A2T6C3M6
C	7	LEU	VAL	conflict	UNP A0A2T6C3M6
C	74	ASP	ASN	conflict	UNP A0A2T6C3M6
C	?	-	SER	deletion	UNP A0A2T6C3M6
D	7	LEU	VAL	conflict	UNP A0A2T6C3M6
D	74	ASP	ASN	conflict	UNP A0A2T6C3M6
D	?	-	SER	deletion	UNP A0A2T6C3M6
E	7	LEU	VAL	conflict	UNP A0A2T6C3M6
E	74	ASP	ASN	conflict	UNP A0A2T6C3M6
E	?	-	SER	deletion	UNP A0A2T6C3M6
F	7	LEU	VAL	conflict	UNP A0A2T6C3M6
F	74	ASP	ASN	conflict	UNP A0A2T6C3M6

Continued on next page...

Continued from previous page...

Chain	Residue	Modelled	Actual	Comment	Reference
F	?	-	SER	deletion	UNP A0A2T6C3M6

- Molecule 2 is methyl alpha-L-fucopyranoside (three-letter code: MFU) (formula: C₇H₁₄O₅).



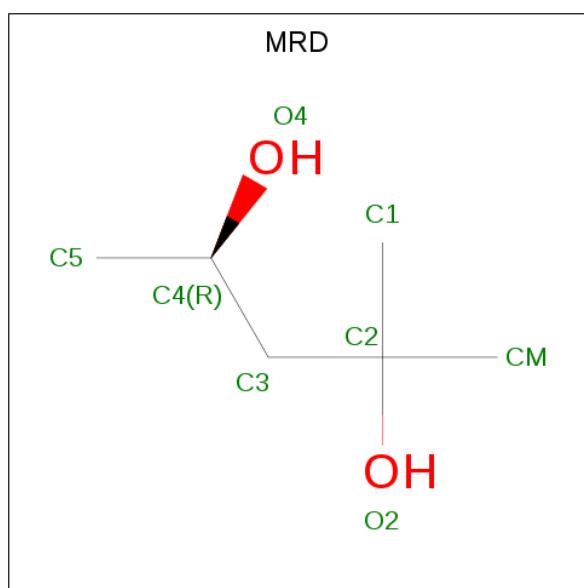
Mol	Chain	Residues	Atoms			ZeroOcc	AltConf
			Total	C	O		
2	A	1	12	7	5	0	0
2	A	1	12	7	5	0	0
2	A	1	12	7	5	0	0
2	B	1	12	7	5	0	0
2	B	1	12	7	5	0	0
2	B	1	12	7	5	0	0
2	C	1	12	7	5	0	0
2	C	1	12	7	5	0	0
2	C	1	12	7	5	0	0
2	D	1	12	7	5	0	0
2	D	1	12	7	5	0	0

Continued on next page...

Continued from previous page...

Mol	Chain	Residues	Atoms			ZeroOcc	AltConf
2	D	1	Total	C	O	0	0
			12	7	5		
2	E	1	Total	C	O	0	0
			12	7	5		
2	E	1	Total	C	O	0	0
			12	7	5		
2	E	1	Total	C	O	0	0
			12	7	5		
2	F	1	Total	C	O	0	0
			12	7	5		
2	F	1	Total	C	O	0	0
			12	7	5		
2	F	1	Total	C	O	0	0
			12	7	5		

- Molecule 3 is (4R)-2-METHYLPENTANE-2,4-DIOL (three-letter code: MRD) (formula: C₆H₁₄O₂).



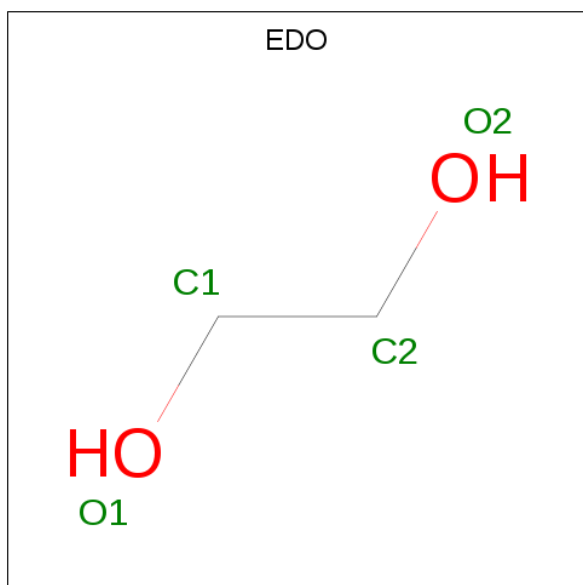
Mol	Chain	Residues	Atoms			ZeroOcc	AltConf
3	A	1	Total	C	O	0	0
			8	6	2		
3	B	1	Total	C	O	0	0
			8	6	2		
3	C	1	Total	C	O	0	0
			8	6	2		
3	D	1	Total	C	O	0	0
			8	6	2		

Continued on next page...

Continued from previous page...

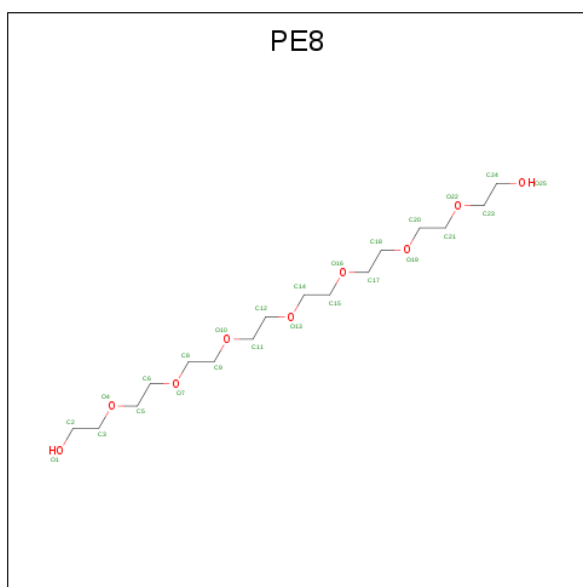
Mol	Chain	Residues	Atoms			ZeroOcc	AltConf
3	E	1	Total	C	O	0	0
			8	6	2		
3	F	1	Total	C	O	0	0
			8	6	2		

- Molecule 4 is 1,2-ETHANEDIOL (three-letter code: EDO) (formula: C₂H₆O₂).



Mol	Chain	Residues	Atoms			ZeroOcc	AltConf
4	A	1	Total	C	O	0	0
			4	2	2		
4	A	1	Total	C	O	0	0
			4	2	2		
4	C	1	Total	C	O	0	0
			4	2	2		
4	C	1	Total	C	O	0	0
			4	2	2		
4	E	1	Total	C	O	0	0
			4	2	2		

- Molecule 5 is 3,6,9,12,15,18,21-HEPTAOXATRICOSANE-1,23-DIOL (three-letter code: PE8) (formula: C₁₆H₃₄O₉).



Mol	Chain	Residues	Atoms		ZeroOcc	AltConf
5	B	1	Total	C O	0	0
			25	16 9		

- Molecule 6 is water.

Mol	Chain	Residues	Atoms		ZeroOcc	AltConf
6	A	214	Total	O	0	5
			219	219		
6	B	210	Total	O	0	6
			216	216		
6	C	215	Total	O	0	7
			222	222		
6	D	220	Total	O	0	6
			226	226		
6	E	204	Total	O	0	6
			210	210		
6	F	224	Total	O	0	5
			229	229		

3 Residue-property plots [i](#)

These plots are drawn for all protein, RNA, DNA and oligosaccharide chains in the entry. The first graphic for a chain summarises the proportions of the various outlier classes displayed in the second graphic. The second graphic shows the sequence view annotated by issues in geometry and electron density. Residues are color-coded according to the number of geometric quality criteria for which they contain at least one outlier: green = 0, yellow = 1, orange = 2 and red = 3 or more. A red dot above a residue indicates a poor fit to the electron density ($RSRZ > 2$). Stretches of 2 or more consecutive residues without any outlier are shown as a green connector. Residues present in the sample, but not in the model, are shown in grey.

- Molecule 1: Fucose-binding lectin



- Molecule 1: Fucose-binding lectin



- Molecule 1: Fucose-binding lectin



- Molecule 1: Fucose-binding lectin

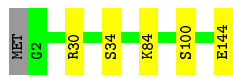


- Molecule 1: Fucose-binding lectin



- Molecule 1: Fucose-binding lectin

Chain F:  96%



4 Data and refinement statistics

Property	Value	Source
Space group	P 2 21 21	Depositor
Cell constants a, b, c, α , β , γ	87.10Å 90.52Å 143.78Å 90.00° 90.00° 90.00°	Depositor
Resolution (Å)	39.25 – 1.55 39.25 – 1.55	Depositor EDS
% Data completeness (in resolution range)	99.7 (39.25-1.55) 99.9 (39.25-1.55)	Depositor EDS
R_{merge}	0.04	Depositor
R_{sym}	(Not available)	Depositor
$\langle I/\sigma(I) \rangle$ ¹	2.20 (at 1.55Å)	Xtrriage
Refinement program	REFMAC 5.8.0232	Depositor
R, R_{free}	0.155 , 0.180 0.169 , 0.191	Depositor DCC
R_{free} test set	8234 reflections (5.00%)	wwPDB-VP
Wilson B-factor (Å ²)	21.4	Xtrriage
Anisotropy	0.414	Xtrriage
Bulk solvent k_{sol} (e/Å ³), B_{sol} (Å ²)	0.30 , 40.8	EDS
L-test for twinning ²	$\langle L \rangle = 0.49$, $\langle L^2 \rangle = 0.32$	Xtrriage
Estimated twinning fraction	0.014 for k,h,-l	Xtrriage
F_o, F_c correlation	0.97	EDS
Total number of atoms	8656	wwPDB-VP
Average B, all atoms (Å ²)	23.0	wwPDB-VP

Xtrriage's analysis on translational NCS is as follows: *The largest off-origin peak in the Patterson function is 4.51% of the height of the origin peak. No significant pseudotranslation is detected.*

¹Intensities estimated from amplitudes.

²Theoretical values of $\langle |L| \rangle$, $\langle L^2 \rangle$ for acentric reflections are 0.5, 0.333 respectively for untwinned datasets, and 0.375, 0.2 for perfectly twinned datasets.

5 Model quality i

5.1 Standard geometry i

Bond lengths and bond angles in the following residue types are not validated in this section: MRD, PE8, EDO, MFU

The Z score for a bond length (or angle) is the number of standard deviations the observed value is removed from the expected value. A bond length (or angle) with $|Z| > 5$ is considered an outlier worth inspection. RMSZ is the root-mean-square of all Z scores of the bond lengths (or angles).

Mol	Chain	Bond lengths		Bond angles	
		RMSZ	# Z >5	RMSZ	# Z >5
1	A	0.83	0/1201	0.88	2/1633 (0.1%)
1	B	0.81	0/1205	0.91	1/1636 (0.1%)
1	C	0.81	0/1202	0.94	1/1633 (0.1%)
1	D	0.78	0/1193	0.86	1/1620 (0.1%)
1	E	0.79	0/1218	0.90	4/1655 (0.2%)
1	F	0.87	2/1208 (0.2%)	0.88	1/1641 (0.1%)
All	All	0.82	2/7227 (0.0%)	0.90	10/9818 (0.1%)

All (2) bond length outliers are listed below:

Mol	Chain	Res	Type	Atoms	Z	Observed(Å)	Ideal(Å)
1	F	144	GLU	CD-OE1	7.56	1.33	1.25
1	F	100	SER	CB-OG	6.03	1.50	1.42

All (10) bond angle outliers are listed below:

Mol	Chain	Res	Type	Atoms	Z	Observed(°)	Ideal(°)
1	C	16	ARG	NE-CZ-NH2	-7.36	116.62	120.30
1	F	30	ARG	NE-CZ-NH2	-6.34	117.13	120.30
1	B	16	ARG	NE-CZ-NH1	6.17	123.38	120.30
1	E	39[A]	ASP	CB-CG-OD2	-5.79	113.09	118.30
1	E	39[B]	ASP	CB-CG-OD2	-5.79	113.09	118.30
1	E	30	ARG	NE-CZ-NH2	-5.74	117.43	120.30
1	D	16	ARG	NE-CZ-NH1	5.57	123.08	120.30
1	A	67	ARG	NE-CZ-NH2	-5.57	117.52	120.30
1	A	16	ARG	NE-CZ-NH1	5.38	122.99	120.30
1	E	33	ASP	CB-CG-OD2	-5.00	113.80	118.30

There are no chirality outliers.

There are no planarity outliers.

5.2 Too-close contacts [i](#)

In the following table, the Non-H and H(model) columns list the number of non-hydrogen atoms and hydrogen atoms in the chain respectively. The H(added) column lists the number of hydrogen atoms added and optimized by MolProbity. The Clashes column lists the number of clashes within the asymmetric unit, whereas Symm-Clashes lists symmetry related clashes.

Mol	Chain	Non-H	H(model)	H(added)	Clashes	Symm-Clashes
1	A	1167	0	1071	1	0
1	B	1171	0	1083	0	0
1	C	1169	0	1078	3	0
1	D	1160	0	1075	0	0
1	E	1184	0	1087	0	0
1	F	1174	0	1078	0	0
2	A	36	0	42	0	0
2	B	36	0	42	0	0
2	C	36	0	42	0	0
2	D	36	0	42	0	0
2	E	36	0	42	0	0
2	F	36	0	42	0	0
3	A	8	0	14	0	0
3	B	8	0	14	0	0
3	C	8	0	14	0	0
3	D	8	0	14	0	0
3	E	8	0	14	0	0
3	F	8	0	14	0	0
4	A	8	0	12	0	0
4	C	8	0	12	1	0
4	E	4	0	6	0	0
5	B	25	0	34	0	0
6	A	219	0	0	1	0
6	B	216	0	0	0	0
6	C	222	0	0	2	0
6	D	226	0	0	0	0
6	E	210	0	0	0	0
6	F	229	0	0	0	0
All	All	8656	0	6872	4	0

The all-atom clashscore is defined as the number of clashes found per 1000 atoms (including hydrogen atoms). The all-atom clashscore for this structure is 0.

All (4) close contacts within the same asymmetric unit are listed below, sorted by their clash magnitude.

Atom-1	Atom-2	Interatomic distance (Å)	Clash overlap (Å)
1:C:128[B]:LYS:NZ	6:C:303:HOH:O	2.42	0.53
1:A:78[A]:ILE:CG2	6:A:351:HOH:O	2.59	0.51
1:C:141:ALA:HA	4:C:206:EDO:H21	1.98	0.45
1:C:38:TYR:HE2	6:C:321:HOH:O	2.03	0.40

There are no symmetry-related clashes.

5.3 Torsion angles [i](#)

5.3.1 Protein backbone [i](#)

In the following table, the Percentiles column shows the percent Ramachandran outliers of the chain as a percentile score with respect to all X-ray entries followed by that with respect to entries of similar resolution.

The Analysed column shows the number of residues for which the backbone conformation was analysed, and the total number of residues.

Mol	Chain	Analysed	Favoured	Allowed	Outliers	Percentiles	
1	A	145/144 (101%)	139 (96%)	4 (3%)	2 (1%)	11	1
1	B	145/144 (101%)	137 (94%)	7 (5%)	1 (1%)	22	5
1	C	145/144 (101%)	139 (96%)	5 (3%)	1 (1%)	22	5
1	D	144/144 (100%)	137 (95%)	6 (4%)	1 (1%)	22	5
1	E	147/144 (102%)	141 (96%)	5 (3%)	1 (1%)	22	5
1	F	146/144 (101%)	139 (95%)	5 (3%)	2 (1%)	11	1
All	All	872/864 (101%)	832 (95%)	32 (4%)	8 (1%)	17	3

All (8) Ramachandran outliers are listed below:

Mol	Chain	Res	Type
1	B	84	LYS
1	E	84	LYS
1	F	84	LYS
1	A	84	LYS
1	C	84	LYS
1	D	84	LYS
1	F	34	SER
1	A	34	SER

5.3.2 Protein sidechains [i](#)

In the following table, the Percentiles column shows the percent sidechain outliers of the chain as a percentile score with respect to all X-ray entries followed by that with respect to entries of similar resolution.

The Analysed column shows the number of residues for which the sidechain conformation was analysed, and the total number of residues.

Mol	Chain	Analysed	Rotameric	Outliers	Percentiles	
1	A	118/117 (101%)	118 (100%)	0	100	100
1	B	120/117 (103%)	118 (98%)	2 (2%)	60	32
1	C	118/117 (101%)	118 (100%)	0	100	100
1	D	119/117 (102%)	118 (99%)	1 (1%)	81	66
1	E	121/117 (103%)	119 (98%)	2 (2%)	60	32
1	F	120/117 (103%)	120 (100%)	0	100	100
All	All	716/702 (102%)	711 (99%)	5 (1%)	86	69

All (5) residues with a non-rotameric sidechain are listed below:

Mol	Chain	Res	Type
1	B	36	LYS
1	B	136	LYS
1	D	86	LYS
1	E	39[A]	ASP
1	E	39[B]	ASP

Some sidechains can be flipped to improve hydrogen bonding and reduce clashes. There are no such sidechains identified.

5.3.3 RNA [i](#)

There are no RNA molecules in this entry.

5.4 Non-standard residues in protein, DNA, RNA chains [i](#)

There are no non-standard protein/DNA/RNA residues in this entry.

5.5 Carbohydrates [i](#)

There are no monosaccharides in this entry.

5.6 Ligand geometry

30 ligands are modelled in this entry.

In the following table, the Counts columns list the number of bonds (or angles) for which Mogul statistics could be retrieved, the number of bonds (or angles) that are observed in the model and the number of bonds (or angles) that are defined in the Chemical Component Dictionary. The Link column lists molecule types, if any, to which the group is linked. The Z score for a bond length (or angle) is the number of standard deviations the observed value is removed from the expected value. A bond length (or angle) with $|Z| > 2$ is considered an outlier worth inspection. RMSZ is the root-mean-square of all Z scores of the bond lengths (or angles).

Mol	Type	Chain	Res	Link	Bond lengths			Bond angles		
					Counts	RMSZ	# Z > 2	Counts	RMSZ	# Z > 2
2	MFU	D	203	-	12,12,12	1.55	2 (16%)	17,17,17	1.73	2 (11%)
2	MFU	F	202	-	12,12,12	1.02	1 (8%)	17,17,17	1.81	6 (35%)
2	MFU	A	201	-	12,12,12	1.19	2 (16%)	17,17,17	2.78	9 (52%)
3	MRD	D	204	-	7,7,7	0.67	0	9,10,10	0.73	0
2	MFU	B	203	-	12,12,12	1.22	0	17,17,17	1.94	6 (35%)
2	MFU	C	203	-	12,12,12	1.20	1 (8%)	17,17,17	1.59	3 (17%)
4	EDO	C	206	-	3,3,3	1.23	0	2,2,2	0.59	0
4	EDO	A	206	-	3,3,3	1.13	0	2,2,2	0.66	0
2	MFU	B	202	-	12,12,12	1.19	0	17,17,17	1.97	6 (35%)
2	MFU	B	201	-	12,12,12	0.90	0	17,17,17	2.15	3 (17%)
2	MFU	C	201	-	12,12,12	1.31	1 (8%)	17,17,17	1.32	3 (17%)
4	EDO	A	205	-	3,3,3	0.14	0	2,2,2	1.09	0
2	MFU	E	203	-	12,12,12	1.60	2 (16%)	17,17,17	1.45	2 (11%)
3	MRD	A	204	-	7,7,7	0.28	0	9,10,10	1.01	0
3	MRD	E	204	-	7,7,7	0.39	0	9,10,10	0.78	0
2	MFU	D	201	-	12,12,12	1.33	0	17,17,17	1.65	4 (23%)
2	MFU	F	201	-	12,12,12	0.89	0	17,17,17	1.95	5 (29%)
2	MFU	E	201	-	12,12,12	1.01	0	17,17,17	1.45	2 (11%)
4	EDO	C	205	-	3,3,3	0.99	0	2,2,2	0.70	0
4	EDO	E	205	-	3,3,3	0.14	0	2,2,2	0.82	0
2	MFU	E	202	-	12,12,12	1.30	2 (16%)	17,17,17	1.45	3 (17%)
2	MFU	F	203	-	12,12,12	1.39	2 (16%)	17,17,17	1.50	1 (5%)
2	MFU	D	202	-	12,12,12	1.02	1 (8%)	17,17,17	1.61	3 (17%)
2	MFU	A	203	-	12,12,12	1.40	3 (25%)	17,17,17	2.29	3 (17%)
5	PE8	B	205	-	24,24,24	0.30	0	23,23,23	0.27	0
3	MRD	F	204	-	7,7,7	0.28	0	9,10,10	0.67	0
2	MFU	C	202	-	12,12,12	1.21	2 (16%)	17,17,17	1.50	1 (5%)
3	MRD	C	204	-	7,7,7	0.35	0	9,10,10	0.50	0

Mol	Type	Chain	Res	Link	Bond lengths			Bond angles		
					Counts	RMSZ	# Z > 2	Counts	RMSZ	# Z > 2
2	MFU	A	202	-	12,12,12	1.01	1 (8%)	17,17,17	1.64	3 (17%)
3	MRD	B	204	-	7,7,7	0.72	0	9,10,10	0.70	0

In the following table, the Chirals column lists the number of chiral outliers, the number of chiral centers analysed, the number of these observed in the model and the number defined in the Chemical Component Dictionary. Similar counts are reported in the Torsion and Rings columns. '-' means no outliers of that kind were identified.

Mol	Type	Chain	Res	Link	Chirals	Torsions	Rings
2	MFU	D	203	-	-	0/2/22/22	0/1/1/1
2	MFU	F	202	-	-	0/2/22/22	0/1/1/1
2	MFU	A	201	-	-	0/2/22/22	0/1/1/1
3	MRD	D	204	-	-	2/5/5/5	-
2	MFU	B	203	-	-	0/2/22/22	0/1/1/1
2	MFU	C	203	-	-	0/2/22/22	0/1/1/1
4	EDO	C	206	-	-	1/1/1/1	-
4	EDO	A	206	-	-	0/1/1/1	-
2	MFU	B	202	-	-	0/2/22/22	0/1/1/1
2	MFU	B	201	-	-	0/2/22/22	0/1/1/1
2	MFU	C	201	-	-	0/2/22/22	0/1/1/1
4	EDO	A	205	-	-	0/1/1/1	-
2	MFU	E	203	-	-	0/2/22/22	0/1/1/1
3	MRD	A	204	-	-	3/5/5/5	-
3	MRD	E	204	-	-	5/5/5/5	-
2	MFU	D	201	-	-	0/2/22/22	0/1/1/1
2	MFU	F	201	-	-	0/2/22/22	0/1/1/1
2	MFU	E	201	-	-	0/2/22/22	0/1/1/1
4	EDO	C	205	-	-	0/1/1/1	-
4	EDO	E	205	-	-	1/1/1/1	-
2	MFU	E	202	-	-	0/2/22/22	0/1/1/1
2	MFU	F	203	-	-	0/2/22/22	0/1/1/1
2	MFU	D	202	-	-	0/2/22/22	0/1/1/1
2	MFU	A	203	-	-	0/2/22/22	0/1/1/1
5	PE8	B	205	-	-	1/22/22/22	-
3	MRD	F	204	-	-	5/5/5/5	-
2	MFU	C	202	-	-	0/2/22/22	0/1/1/1
3	MRD	C	204	-	-	4/5/5/5	-
2	MFU	A	202	-	-	0/2/22/22	0/1/1/1
3	MRD	B	204	-	-	2/5/5/5	-

All (20) bond length outliers are listed below:

Mol	Chain	Res	Type	Atoms	Z	Observed(Å)	Ideal(Å)
2	E	203	MFU	O1-C1	3.69	1.46	1.40
2	D	203	MFU	O4-C4	3.63	1.51	1.43
2	D	203	MFU	O1-C1	2.83	1.45	1.40
2	E	202	MFU	O1-C1	2.75	1.44	1.40
2	C	202	MFU	C6-C5	-2.69	1.45	1.51
2	E	203	MFU	O3-C3	2.62	1.49	1.43
2	C	203	MFU	O3-C3	2.58	1.49	1.43
2	A	203	MFU	O4-C4	2.46	1.48	1.43
2	F	202	MFU	O1-C1	2.43	1.44	1.40
2	A	202	MFU	O1-C1	2.39	1.44	1.40
2	F	203	MFU	C6-C5	-2.39	1.45	1.51
2	E	202	MFU	O4-C4	2.33	1.48	1.43
2	F	203	MFU	C4-C5	2.30	1.57	1.52
2	A	203	MFU	C4-C3	-2.27	1.46	1.52
2	D	202	MFU	O1-C1	2.16	1.43	1.40
2	A	203	MFU	O5-C1	-2.15	1.36	1.41
2	A	201	MFU	O2-C2	2.12	1.48	1.43
2	A	201	MFU	C6-C5	2.09	1.56	1.51
2	C	201	MFU	C6-C5	2.05	1.56	1.51
2	C	202	MFU	O1-C1	2.02	1.43	1.40

All (65) bond angle outliers are listed below:

Mol	Chain	Res	Type	Atoms	Z	Observed(°)	Ideal(°)
2	A	203	MFU	O1-C1-C2	-7.56	99.28	108.15
2	A	201	MFU	O1-C1-C2	-6.72	100.27	108.15
2	B	201	MFU	CM-O1-C1	-5.57	104.68	113.27
2	B	201	MFU	O1-C1-C2	-5.30	101.94	108.15
2	B	202	MFU	O1-C1-C2	-5.24	102.00	108.15
2	F	203	MFU	O1-C1-C2	-4.84	102.48	108.15
2	C	202	MFU	O1-C1-C2	-4.82	102.50	108.15
2	A	201	MFU	C3-C4-C5	-4.50	102.77	109.77
2	D	203	MFU	O1-C1-C2	-4.22	103.20	108.15
2	F	201	MFU	CM-O1-C1	-4.17	106.83	113.27
2	A	202	MFU	CM-O1-C1	-4.13	106.90	113.27
2	D	201	MFU	O1-C1-C2	-4.08	103.37	108.15
2	F	201	MFU	O1-C1-C2	-4.07	103.38	108.15
2	C	203	MFU	O1-C1-C2	-4.05	103.40	108.15
2	D	202	MFU	CM-O1-C1	-4.00	107.11	113.27
2	F	201	MFU	C3-C4-C5	-3.85	103.78	109.77
2	F	202	MFU	O1-C1-C2	-3.79	103.70	108.15
2	E	201	MFU	O1-C1-C2	-3.70	103.82	108.15
2	B	203	MFU	C1-O5-C5	3.68	120.00	113.67

Continued on next page...

Continued from previous page...

Mol	Chain	Res	Type	Atoms	Z	Observed(°)	Ideal(°)
2	D	203	MFU	CM-O1-C1	-3.67	107.61	113.27
2	E	203	MFU	O1-C1-C2	-3.51	104.04	108.15
2	F	202	MFU	CM-O1-C1	-3.38	108.06	113.27
2	D	202	MFU	O1-C1-C2	-3.36	104.20	108.15
2	B	203	MFU	O1-C1-C2	-3.35	104.22	108.15
2	D	201	MFU	CM-O1-C1	-3.33	108.14	113.27
2	A	201	MFU	O5-C5-C6	-3.10	100.00	106.70
2	B	203	MFU	C3-C4-C5	-2.99	105.12	109.77
2	E	202	MFU	CM-O1-C1	-2.97	108.70	113.27
2	A	201	MFU	C1-O5-C5	-2.93	108.63	113.67
2	E	202	MFU	O1-C1-C2	-2.92	104.72	108.15
2	B	202	MFU	O5-C5-C4	-2.91	104.31	109.52
2	C	201	MFU	CM-O1-C1	-2.87	108.84	113.27
2	F	202	MFU	O3-C3-C4	2.87	116.99	110.35
2	C	201	MFU	O1-C1-C2	-2.86	104.79	108.15
2	E	203	MFU	C3-C4-C5	-2.77	105.45	109.77
2	B	202	MFU	CM-O1-C1	-2.73	109.06	113.27
2	A	201	MFU	C1-C2-C3	2.72	115.65	110.00
2	B	203	MFU	C4-C3-C2	2.71	115.56	110.82
2	A	201	MFU	O2-C2-C3	-2.70	104.11	110.35
2	E	201	MFU	CM-O1-C1	2.67	117.39	113.27
2	A	201	MFU	O5-C1-C2	-2.63	104.78	110.35
2	A	203	MFU	O4-C4-C5	-2.57	103.97	109.67
2	A	202	MFU	O5-C1-O1	2.52	116.82	110.97
2	A	203	MFU	C1-O5-C5	2.52	117.99	113.67
2	C	203	MFU	C3-C4-C5	-2.51	105.87	109.77
2	C	201	MFU	C3-C4-C5	-2.50	105.88	109.77
2	A	202	MFU	O1-C1-C2	-2.43	105.30	108.15
2	F	202	MFU	C4-C3-C2	-2.39	106.65	110.82
2	A	201	MFU	CM-O1-C1	-2.37	109.61	113.27
2	D	201	MFU	O3-C3-C4	2.33	115.74	110.35
2	C	203	MFU	O5-C5-C4	-2.30	105.39	109.52
2	B	201	MFU	C3-C4-C5	-2.24	106.28	109.77
2	B	202	MFU	C4-C3-C2	-2.23	106.94	110.82
2	E	202	MFU	O4-C4-C5	-2.19	104.81	109.67
2	B	203	MFU	O5-C5-C6	2.18	111.41	106.70
2	B	202	MFU	O4-C4-C3	2.18	115.39	110.35
2	F	202	MFU	C6-C5-C4	2.18	117.09	113.07
2	A	201	MFU	C6-C5-C4	-2.17	109.05	113.07
2	D	201	MFU	C3-C4-C5	-2.17	106.39	109.77
2	B	203	MFU	C6-C5-C4	-2.17	109.06	113.07
2	F	202	MFU	C3-C4-C5	2.10	113.04	109.77

Continued on next page...

Continued from previous page...

Mol	Chain	Res	Type	Atoms	Z	Observed(°)	Ideal(°)
2	F	201	MFU	O4-C4-C5	-2.08	105.05	109.67
2	F	201	MFU	C1-C2-C3	2.07	114.31	110.00
2	D	202	MFU	C6-C5-C4	2.06	116.88	113.07
2	B	202	MFU	C1-O5-C5	2.01	117.12	113.67

There are no chirality outliers.

All (24) torsion outliers are listed below:

Mol	Chain	Res	Type	Atoms
3	D	204	MRD	C2-C3-C4-O4
3	A	204	MRD	C2-C3-C4-O4
3	A	204	MRD	C2-C3-C4-C5
3	E	204	MRD	O2-C2-C3-C4
3	B	204	MRD	C2-C3-C4-O4
4	E	205	EDO	O1-C1-C2-O2
3	D	204	MRD	O2-C2-C3-C4
3	F	204	MRD	O2-C2-C3-C4
3	C	204	MRD	O2-C2-C3-C4
3	B	204	MRD	O2-C2-C3-C4
3	E	204	MRD	C2-C3-C4-C5
3	F	204	MRD	C2-C3-C4-C5
3	A	204	MRD	CM-C2-C3-C4
3	E	204	MRD	C1-C2-C3-C4
3	E	204	MRD	CM-C2-C3-C4
3	F	204	MRD	C1-C2-C3-C4
3	F	204	MRD	CM-C2-C3-C4
3	C	204	MRD	C1-C2-C3-C4
3	C	204	MRD	CM-C2-C3-C4
5	B	205	PE8	O7-C8-C9-O10
4	C	206	EDO	O1-C1-C2-O2
3	C	204	MRD	C2-C3-C4-C5
3	E	204	MRD	C2-C3-C4-O4
3	F	204	MRD	C2-C3-C4-O4

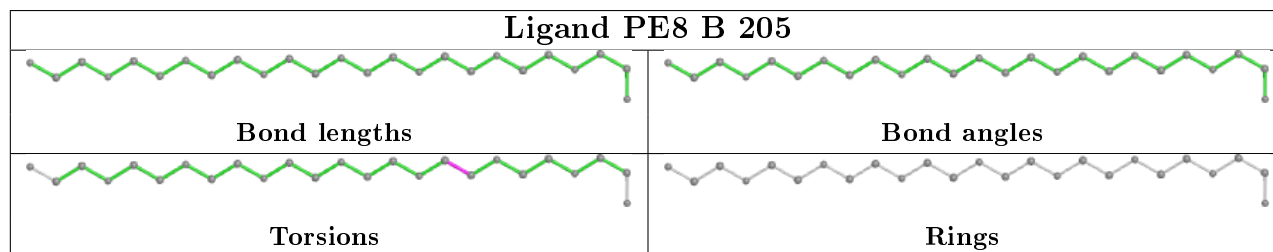
There are no ring outliers.

1 monomer is involved in 1 short contact:

Mol	Chain	Res	Type	Clashes	Symm-Clashes
4	C	206	EDO	1	0

The following is a two-dimensional graphical depiction of Mogul quality analysis of bond lengths,

bond angles, torsion angles, and ring geometry for all instances of the Ligand of Interest. In addition, ligands with molecular weight > 250 and outliers as shown on the validation Tables will also be included. For torsion angles, if less than 5% of the Mogul distribution of torsion angles is within 10 degrees of the torsion angle in question, then that torsion angle is considered an outlier. Any bond that is central to one or more torsion angles identified as an outlier by Mogul will be highlighted in the graph. For rings, the root-mean-square deviation (RMSD) between the ring in question and similar rings identified by Mogul is calculated over all ring torsion angles. If the average RMSD is greater than 60 degrees and the minimal RMSD between the ring in question and any Mogul-identified rings is also greater than 60 degrees, then that ring is considered an outlier. The outliers are highlighted in purple. The color gray indicates Mogul did not find sufficient equivalents in the CSD to analyse the geometry.



5.7 Other polymers [i](#)

There are no such residues in this entry.

5.8 Polymer linkage issues [i](#)

There are no chain breaks in this entry.

6 Fit of model and data [i](#)

6.1 Protein, DNA and RNA chains [i](#)

In the following table, the column labelled '#RSRZ> 2' contains the number (and percentage) of RSRZ outliers, followed by percent RSRZ outliers for the chain as percentile scores relative to all X-ray entries and entries of similar resolution. The OWAB column contains the minimum, median, 95th percentile and maximum values of the occupancy-weighted average B-factor per residue. The column labelled 'Q< 0.9' lists the number of (and percentage) of residues with an average occupancy less than 0.9.

Mol	Chain	Analysed	<RSRZ>	#RSRZ>2	OWAB(Å ²)	Q<0.9
1	A	143/144 (99%)	0.04	3 (2%) 63 69	17, 21, 34, 45	0
1	B	143/144 (99%)	-0.06	0 100 100	16, 21, 32, 51	0
1	C	143/144 (99%)	-0.07	0 100 100	15, 19, 31, 54	0
1	D	143/144 (99%)	0.06	3 (2%) 63 69	16, 20, 33, 40	1 (0%)
1	E	143/144 (99%)	-0.16	0 100 100	15, 20, 31, 42	0
1	F	143/144 (99%)	-0.11	0 100 100	15, 20, 30, 42	0
All	All	858/864 (99%)	-0.05	6 (0%) 87 90	15, 20, 33, 54	1 (0%)

All (6) RSRZ outliers are listed below:

Mol	Chain	Res	Type	RSRZ
1	A	110	LYS	2.3
1	D	111	ASN	2.3
1	A	9	GLY	2.3
1	D	60	SER	2.1
1	D	110	LYS	2.1
1	A	11	GLY	2.1

6.2 Non-standard residues in protein, DNA, RNA chains [i](#)

There are no non-standard protein/DNA/RNA residues in this entry.

6.3 Carbohydrates [i](#)

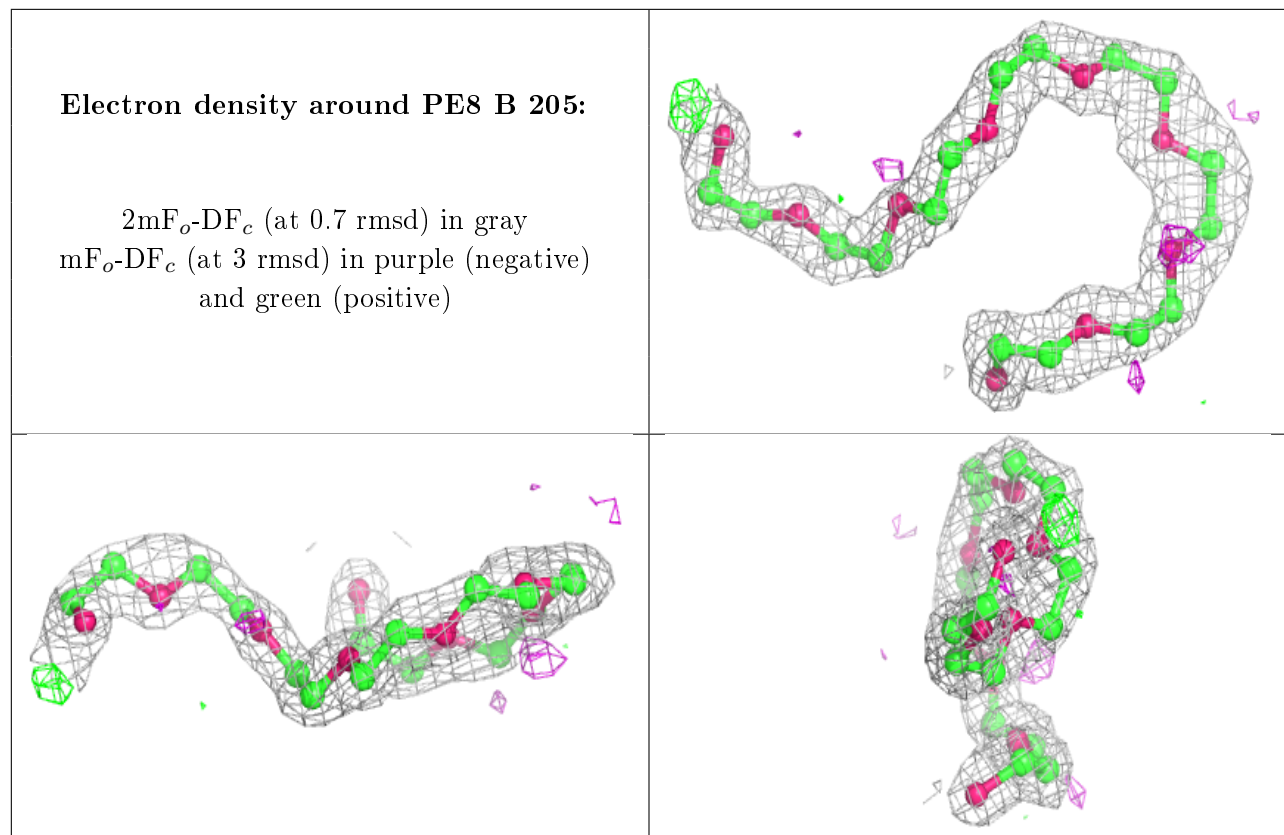
There are no monosaccharides in this entry.

6.4 Ligands

In the following table, the Atoms column lists the number of modelled atoms in the group and the number defined in the chemical component dictionary. The B-factors column lists the minimum, median, 95th percentile and maximum values of B factors of atoms in the group. The column labelled 'Q< 0.9' lists the number of atoms with occupancy less than 0.9.

Mol	Type	Chain	Res	Atoms	RSCC	RSR	B-factors(Å ²)	Q<0.9
4	EDO	C	206	4/4	0.69	0.20	28,32,36,36	0
4	EDO	A	206	4/4	0.71	0.20	37,42,42,46	0
4	EDO	C	205	4/4	0.72	0.23	34,35,37,37	0
4	EDO	E	205	4/4	0.72	0.29	38,39,45,46	0
3	MRD	A	204	8/8	0.77	0.19	24,32,36,39	8
2	MFU	B	201	12/12	0.83	0.11	18,20,23,27	0
3	MRD	F	204	8/8	0.84	0.26	25,35,41,44	8
3	MRD	E	204	8/8	0.85	0.38	25,29,42,49	8
3	MRD	D	204	8/8	0.85	0.25	24,26,43,45	8
3	MRD	C	204	8/8	0.85	0.50	18,23,26,26	8
5	PE8	B	205	25/25	0.88	0.22	33,40,54,57	0
3	MRD	B	204	8/8	0.88	0.15	22,26,31,32	0
4	EDO	A	205	4/4	0.89	0.21	42,44,44,51	0
2	MFU	B	203	12/12	0.90	0.09	19,22,27,28	0
2	MFU	B	202	12/12	0.90	0.12	19,21,25,27	0
2	MFU	C	202	12/12	0.91	0.11	16,18,22,24	0
2	MFU	D	203	12/12	0.91	0.09	17,19,24,29	0
2	MFU	A	202	12/12	0.91	0.07	18,21,25,30	0
2	MFU	D	201	12/12	0.91	0.08	18,18,23,24	0
2	MFU	A	201	12/12	0.92	0.08	18,20,24,25	0
2	MFU	D	202	12/12	0.92	0.08	18,20,23,24	0
2	MFU	C	201	12/12	0.93	0.09	16,17,20,20	0
2	MFU	A	203	12/12	0.93	0.07	16,18,22,27	0
2	MFU	E	201	12/12	0.93	0.08	17,20,27,34	0
2	MFU	E	202	12/12	0.93	0.07	17,19,22,22	0
2	MFU	F	202	12/12	0.94	0.06	17,20,23,24	0
2	MFU	F	201	12/12	0.94	0.07	16,19,22,22	0
2	MFU	C	203	12/12	0.94	0.07	16,18,20,23	0
2	MFU	F	203	12/12	0.94	0.07	16,18,23,28	0
2	MFU	E	203	12/12	0.95	0.06	18,18,23,28	0

The following is a graphical depiction of the model fit to experimental electron density of all instances of the Ligand of Interest. In addition, ligands with molecular weight > 250 and outliers as shown on the geometry validation Tables will also be included. Each fit is shown from different orientation to approximate a three-dimensional view.



6.5 Other polymers [i](#)

There are no such residues in this entry.