



Full wwPDB X-ray Structure Validation Report ⓘ

Aug 27, 2023 – 02:54 PM EDT

PDB ID : 3HV5
Title : Human p38 MAP Kinase in Complex with RL24
Authors : Gruetter, C.; Simard, J.R.; Getlik, M.; Rauh, D.
Deposited on : 2009-06-15
Resolution : 2.25 Å(reported)

This is a Full wwPDB X-ray Structure Validation Report for a publicly released PDB entry.

We welcome your comments at validation@mail.wwpdb.org

A user guide is available at

<https://www.wwpdb.org/validation/2017/XrayValidationReportHelp>

with specific help available everywhere you see the ⓘ symbol.

The types of validation reports are described at

<http://www.wwpdb.org/validation/2017/FAQs#types>.

The following versions of software and data (see [references ⓘ](#)) were used in the production of this report:

MolProbity : 4.02b-467
Mogul : 1.8.5 (274361), CSD as541be (2020)
Xtriage (Phenix) : 1.13
EDS : 2.35
buster-report : 1.1.7 (2018)
Percentile statistics : 20191225.v01 (using entries in the PDB archive December 25th 2019)
Refmac : 5.8.0158
CCP4 : 7.0.044 (Gargrove)
Ideal geometry (proteins) : Engh & Huber (2001)
Ideal geometry (DNA, RNA) : Parkinson et al. (1996)
Validation Pipeline (wwPDB-VP) : 2.35

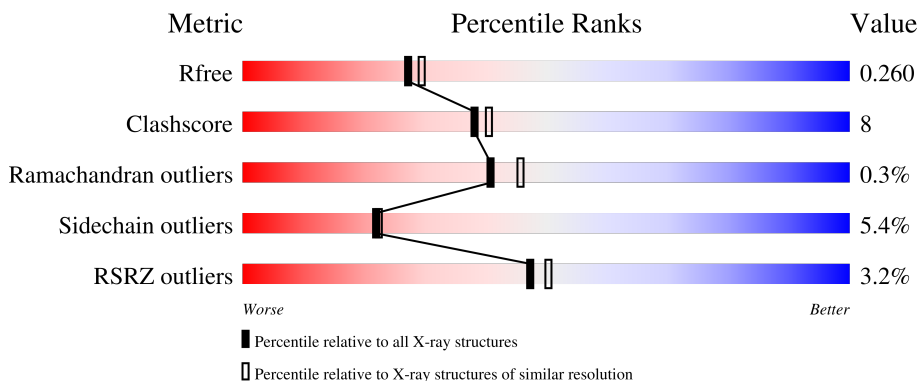
1 Overall quality at a glance

The following experimental techniques were used to determine the structure:

X-RAY DIFFRACTION

The reported resolution of this entry is 2.25 Å.

Percentile scores (ranging between 0-100) for global validation metrics of the entry are shown in the following graphic. The table shows the number of entries on which the scores are based.



Metric	Whole archive (#Entries)	Similar resolution (#Entries, resolution range(Å))
R_{free}	130704	1377 (2.26-2.26)
Clashscore	141614	1487 (2.26-2.26)
Ramachandran outliers	138981	1449 (2.26-2.26)
Sidechain outliers	138945	1450 (2.26-2.26)
RSRZ outliers	127900	1356 (2.26-2.26)

The table below summarises the geometric issues observed across the polymeric chains and their fit to the electron density. The red, orange, yellow and green segments of the lower bar indicate the fraction of residues that contain outliers for ≥ 3 , 2, 1 and 0 types of geometric quality criteria respectively. A grey segment represents the fraction of residues that are not modelled. The numeric value for each fraction is indicated below the corresponding segment, with a dot representing fractions $\leq 5\%$. The upper red bar (where present) indicates the fraction of residues that have poor fit to the electron density. The numeric value is given above the bar.

Mol	Chain	Length	Quality of chain
1	A	360	
1	B	360	

2 Entry composition [i](#)

There are 5 unique types of molecules in this entry. The entry contains 5898 atoms, of which 0 are hydrogens and 0 are deuteriums.

In the tables below, the ZeroOcc column contains the number of atoms modelled with zero occupancy, the AltConf column contains the number of residues with at least one atom in alternate conformation and the Trace column contains the number of residues modelled with at most 2 atoms.

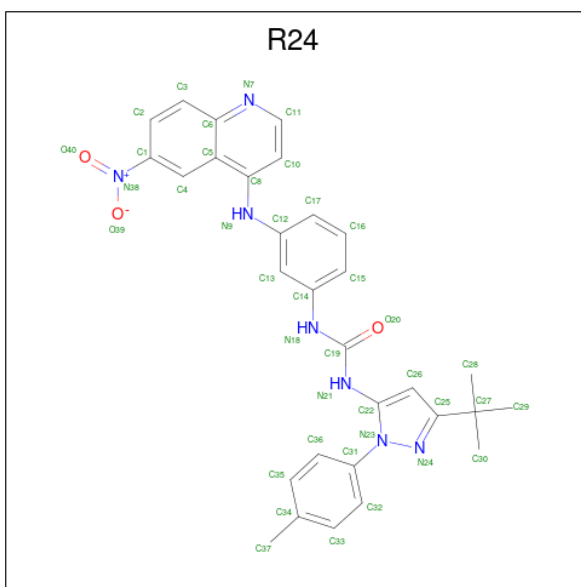
- Molecule 1 is a protein called Mitogen-activated protein kinase 14.

Mol	Chain	Residues	Atoms					ZeroOcc	AltConf	Trace
			Total	C	N	O	S			
1	A	339	Total 2722	C 1747	N 465	O 499	S 11	0	0	0
1	B	339	Total 2729	C 1751	N 465	O 500	S 13	0	1	0

There are 2 discrepancies between the modelled and reference sequences:

Chain	Residue	Modelled	Actual	Comment	Reference
A	1	GLY	-	expression tag	UNP Q16539
B	1	GLY	-	expression tag	UNP Q16539

- Molecule 2 is 1-[3-tert-butyl-1-(4-methylphenyl)-1H-pyrazol-5-yl]-3-{3-[(6-nitroquinolin-4-yl)amino]phenyl}urea (three-letter code: R24) (formula: C₃₀H₂₉N₇O₃).



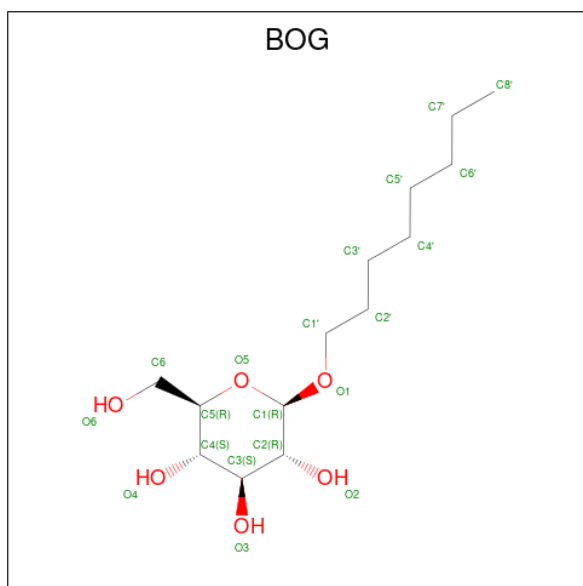
Mol	Chain	Residues	Atoms				ZeroOcc	AltConf
			Total	C	N	O		
2	A	1	Total 40	C 30	N 7	O 3	0	0

Continued on next page...

Continued from previous page...

Mol	Chain	Residues	Atoms			ZeroOcc	AltConf	
			Total	C	N			O
2	B	1	40	30	7	3	0	0

- Molecule 3 is octyl beta-D-glucopyranoside (three-letter code: BOG) (formula: C₁₄H₂₈O₆).



Mol	Chain	Residues	Atoms			ZeroOcc	AltConf
			Total	C	O		
3	A	1	20	14	6	0	0
3	B	1	20	14	6	0	0
3	B	1	20	14	6	0	0

- Molecule 4 is 2-(N-MORPHOLINO)-ETHANESULFONIC ACID (three-letter code: MES) (formula: C₆H₁₃NO₄S).



Mol	Chain	Residues	Atoms					ZeroOcc	AltConf
			Total	C	N	O	S		
4	A	1	12	6	1	4	1	0	0

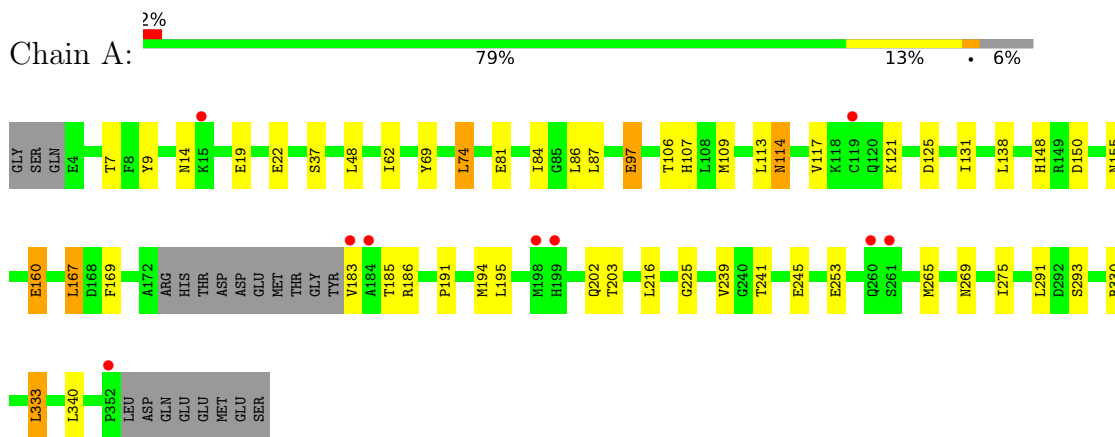
- Molecule 5 is water.

Mol	Chain	Residues	Atoms		ZeroOcc	AltConf
5	A	160	Total	O	0	0
			160	160		
5	B	135	Total	O	0	0
			135	135		

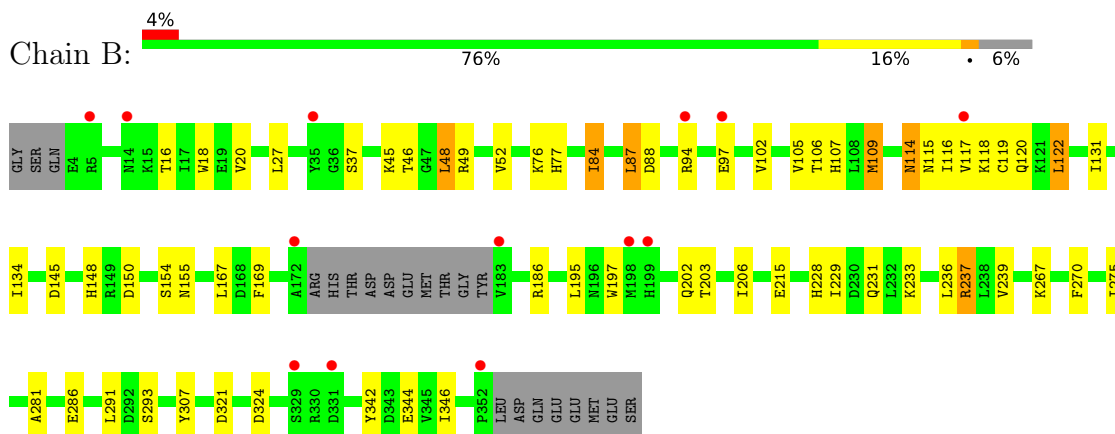
3 Residue-property plots [i](#)

These plots are drawn for all protein, RNA, DNA and oligosaccharide chains in the entry. The first graphic for a chain summarises the proportions of the various outlier classes displayed in the second graphic. The second graphic shows the sequence view annotated by issues in geometry and electron density. Residues are color-coded according to the number of geometric quality criteria for which they contain at least one outlier: green = 0, yellow = 1, orange = 2 and red = 3 or more. A red dot above a residue indicates a poor fit to the electron density ($RSRZ > 2$). Stretches of 2 or more consecutive residues without any outlier are shown as a green connector. Residues present in the sample, but not in the model, are shown in grey.

- Molecule 1: Mitogen-activated protein kinase 14



- Molecule 1: Mitogen-activated protein kinase 14



4 Data and refinement statistics

Property	Value	Source
Space group	P 1 21 1	Depositor
Cell constants a, b, c, α , β , γ	70.77Å 74.12Å 71.60Å 90.00° 93.72° 90.00°	Depositor
Resolution (Å)	29.95 – 2.25 29.95 – 2.25	Depositor EDS
% Data completeness (in resolution range)	99.0 (29.95-2.25) 99.1 (29.95-2.25)	Depositor EDS
R_{merge}	0.05	Depositor
R_{sym}	(Not available)	Depositor
$\langle I/\sigma(I) \rangle$ ¹	2.98 (at 2.24Å)	Xtrriage
Refinement program	REFMAC	Depositor
R, R_{free}	0.188 , 0.260 0.188 , 0.260	Depositor DCC
R_{free} test set	873 reflections (2.50%)	wwPDB-VP
Wilson B-factor (Å ²)	26.5	Xtrriage
Anisotropy	0.241	Xtrriage
Bulk solvent k_{sol} (e/Å ³), B_{sol} (Å ²)	0.34 , 38.1	EDS
L-test for twinning ²	$\langle L \rangle = 0.49$, $\langle L^2 \rangle = 0.33$	Xtrriage
Estimated twinning fraction	0.020 for l,-k,h	Xtrriage
F_o, F_c correlation	0.95	EDS
Total number of atoms	5898	wwPDB-VP
Average B, all atoms (Å ²)	28.0	wwPDB-VP

Xtrriage's analysis on translational NCS is as follows: *The largest off-origin peak in the Patterson function is 4.66% of the height of the origin peak. No significant pseudotranslation is detected.*

¹Intensities estimated from amplitudes.

²Theoretical values of $\langle |L| \rangle$, $\langle L^2 \rangle$ for acentric reflections are 0.5, 0.333 respectively for untwinned datasets, and 0.375, 0.2 for perfectly twinned datasets.

5 Model quality [i](#)

5.1 Standard geometry [i](#)

Bond lengths and bond angles in the following residue types are not validated in this section: R24, MES, BOG

The Z score for a bond length (or angle) is the number of standard deviations the observed value is removed from the expected value. A bond length (or angle) with $|Z| > 5$ is considered an outlier worth inspection. RMSZ is the root-mean-square of all Z scores of the bond lengths (or angles).

Mol	Chain	Bond lengths		Bond angles	
		RMSZ	# Z >5	RMSZ	# Z >5
1	A	0.73	0/2785	0.76	2/3784 (0.1%)
1	B	0.70	0/2792	0.79	3/3793 (0.1%)
All	All	0.71	0/5577	0.77	5/7577 (0.1%)

There are no bond length outliers.

All (5) bond angle outliers are listed below:

Mol	Chain	Res	Type	Atoms	Z	Observed(°)	Ideal(°)
1	B	48	LEU	CA-CB-CG	6.37	129.95	115.30
1	A	330	ARG	NE-CZ-NH2	-5.68	117.46	120.30
1	A	333	LEU	CA-CB-CG	5.62	128.24	115.30
1	B	122	LEU	CA-CB-CG	5.08	127.00	115.30
1	B	324	ASP	CB-CG-OD1	5.04	122.83	118.30

There are no chirality outliers.

There are no planarity outliers.

5.2 Too-close contacts [i](#)

In the following table, the Non-H and H(model) columns list the number of non-hydrogen atoms and hydrogen atoms in the chain respectively. The H(added) column lists the number of hydrogen atoms added and optimized by MolProbity. The Clashes column lists the number of clashes within the asymmetric unit, whereas Symm-Clashes lists symmetry-related clashes.

Mol	Chain	Non-H	H(model)	H(added)	Clashes	Symm-Clashes
1	A	2722	0	2714	36	0
1	B	2729	0	2718	49	0
2	A	40	0	29	3	0
2	B	40	0	29	0	0

Continued on next page...

Continued from previous page...

Mol	Chain	Non-H	H(model)	H(added)	Clashes	Symm-Clashes
3	A	20	0	28	0	0
3	B	40	0	56	6	0
4	A	12	0	12	0	0
5	A	160	0	0	2	0
5	B	135	0	0	7	0
All	All	5898	0	5586	85	0

The all-atom clashscore is defined as the number of clashes found per 1000 atoms (including hydrogen atoms). The all-atom clashscore for this structure is 8.

All (85) close contacts within the same asymmetric unit are listed below, sorted by their clash magnitude.

Atom-1	Atom-2	Interatomic distance (Å)	Clash overlap (Å)
1:B:203:THR:HG22	5:B:432:HOH:O	1.68	0.92
1:A:186:ARG:HB2	1:A:194:MET:CE	2.04	0.87
1:B:114:ASN:HB3	5:B:461:HOH:O	1.74	0.86
1:A:148:HIS:HD2	1:A:150:ASP:H	1.30	0.80
1:A:186:ARG:HB2	1:A:194:MET:HE1	1.61	0.79
1:B:84:ILE:HD11	1:B:106:THR:HG21	1.64	0.78
1:A:84:ILE:HD13	1:A:109:MET:HE1	1.65	0.78
1:A:114:ASN:OD1	1:A:183:VAL:HG21	1.90	0.71
1:B:236:LEU:HD21	3:B:1000:BOG:H8'2	1.74	0.69
1:B:148:HIS:HD2	1:B:150:ASP:H	1.38	0.69
1:B:114:ASN:O	1:B:118:LYS:HG3	1.94	0.68
1:A:202:GLN:NE2	5:A:468:HOH:O	2.24	0.67
1:B:77:HIS:HE1	5:B:474:HOH:O	1.78	0.67
1:B:342:TYR:CE2	1:B:346:ILE:HD11	2.29	0.67
1:A:84:ILE:HD13	1:A:109:MET:CE	2.25	0.66
1:B:195:LEU:HD11	3:B:1000:BOG:H7'1	1.80	0.64
1:A:239:VAL:HG21	1:A:291:LEU:HD13	1.80	0.64
1:B:77:HIS:HD2	1:B:321:ASP:OD2	1.81	0.63
1:A:241:THR:HG23	1:A:265:MET:H	1.65	0.62
1:A:74:LEU:HD23	2:A:361:R24:H36	1.85	0.58
1:B:114:ASN:C	1:B:116:ILE:H	2.07	0.58
1:B:239:VAL:HG21	1:B:291:LEU:HD13	1.86	0.56
1:A:155:ASN:ND2	1:A:169:PHE:H	2.05	0.55
1:B:195:LEU:HD22	3:B:362:BOG:H8'2	1.89	0.54
1:B:131:ILE:HD13	1:B:134:ILE:HD12	1.90	0.53
1:A:7:THR:O	1:A:22:GLU:HG3	2.10	0.52
1:B:117:VAL:HG11	1:B:215:GLU:HG2	1.91	0.52
1:B:233:LYS:HE3	1:B:237:ARG:NH2	2.26	0.51

Continued on next page...

Continued from previous page...

Atom-1	Atom-2	Interatomic distance (Å)	Clash overlap (Å)
1:B:167:LEU:HD21	1:B:169:PHE:CE2	2.45	0.51
1:A:109:MET:HE3	2:A:361:R24:H11	1.93	0.51
1:A:113:LEU:O	1:A:117:VAL:HG23	2.11	0.51
1:A:84:ILE:CD1	1:A:109:MET:CE	2.89	0.51
1:A:114:ASN:OD1	1:A:183:VAL:CG2	2.58	0.51
1:B:148:HIS:HE1	1:B:167:LEU:O	1.94	0.50
1:A:84:ILE:HD11	1:A:106:THR:CB	2.42	0.50
1:B:203:THR:OG1	1:B:293:SER:HB2	2.12	0.49
1:A:203:THR:OG1	1:A:293:SER:HB2	2.12	0.49
1:B:202:GLN:NE2	5:B:479:HOH:O	2.12	0.49
1:B:155:ASN:ND2	1:B:169:PHE:H	2.10	0.49
1:A:84:ILE:CD1	1:A:109:MET:HE2	2.42	0.49
1:B:270:PHE:CD1	1:B:286:GLU:HG3	2.47	0.49
1:B:46:THR:OG1	1:B:48:LEU:HD12	2.12	0.48
1:A:84:ILE:HB	1:A:167:LEU:HB3	1.96	0.48
1:B:88:ASP:HB3	1:B:105:VAL:HB	1.96	0.47
1:B:20:VAL:HG21	1:B:27:LEU:HD21	1.96	0.47
1:A:148:HIS:HE1	1:A:167:LEU:O	1.98	0.47
1:A:48:LEU:HD13	1:A:107:HIS:CE1	2.50	0.47
1:A:155:ASN:HD22	1:A:169:PHE:H	1.62	0.47
1:B:267:LYS:NZ	1:B:286:GLU:HG2	2.29	0.47
1:A:148:HIS:HD2	1:A:150:ASP:N	2.07	0.47
1:B:154:SER:O	1:B:169:PHE:CD2	2.68	0.47
1:B:120:GLN:HG3	1:B:122:LEU:HD13	1.96	0.46
1:B:84:ILE:CD1	1:B:106:THR:HG21	2.41	0.46
1:B:155:ASN:HA	1:B:169:PHE:HD2	1.81	0.46
1:A:125:ASP:OD1	5:A:467:HOH:O	2.21	0.45
1:B:52:VAL:HG22	1:B:105:VAL:HG22	1.99	0.45
1:A:167:LEU:HA	2:A:361:R24:H30A	1.99	0.44
1:B:18:TRP:HZ2	1:B:37:SER:HB2	1.81	0.44
1:B:109:MET:HE1	5:B:439:HOH:O	2.17	0.44
1:B:109:MET:CE	5:B:439:HOH:O	2.66	0.43
1:A:191:PRO:HG3	1:A:291:LEU:HD12	2.00	0.43
1:B:116:ILE:C	1:B:118:LYS:N	2.72	0.43
1:B:233:LYS:O	1:B:237:ARG:HD3	2.18	0.43
1:B:281:ALA:HB2	1:B:307:TYR:CE1	2.53	0.43
1:A:97:GLU:H	1:A:97:GLU:CD	2.22	0.43
1:B:116:ILE:C	1:B:118:LYS:H	2.21	0.42
1:B:114:ASN:HD22	1:B:114:ASN:HA	1.43	0.42
1:A:148:HIS:CD2	1:A:150:ASP:H	2.21	0.42
1:A:160:GLU:H	1:A:160:GLU:HG3	1.52	0.42

Continued on next page...

Continued from previous page...

Atom-1	Atom-2	Interatomic distance (Å)	Clash overlap (Å)
1:B:202:GLN:HG2	5:B:479:HOH:O	2.19	0.42
1:B:114:ASN:C	1:B:116:ILE:N	2.73	0.41
1:B:228:HIS:O	1:B:231:GLN:HB3	2.20	0.41
1:B:195:LEU:HD22	3:B:362:BOG:C8'	2.49	0.41
1:B:197:TRP:NE1	3:B:1000:BOG:H5	2.35	0.41
1:B:45:LYS:O	1:B:45:LYS:HG2	2.21	0.41
1:A:9:TYR:O	1:A:19:GLU:HA	2.20	0.41
1:A:69:TYR:CE2	1:A:340:LEU:HB3	2.56	0.41
1:A:186:ARG:NH1	1:A:225:GLY:O	2.53	0.41
1:B:76:LYS:NZ	1:B:344:GLU:OE1	2.35	0.41
1:B:87:LEU:HD11	1:B:107:HIS:CE1	2.56	0.41
1:A:84:ILE:HD11	1:A:106:THR:HB	2.03	0.40
1:B:229:ILE:HD11	3:B:362:BOG:H2'2	2.03	0.40
1:A:14:ASN:N	1:A:14:ASN:HD22	2.19	0.40
1:A:131:ILE:HD11	1:A:216:LEU:HD12	2.04	0.40
1:B:206:ILE:HD13	1:B:206:ILE:HA	1.98	0.40

There are no symmetry-related clashes.

5.3 Torsion angles [i](#)

5.3.1 Protein backbone [i](#)

In the following table, the Percentiles column shows the percent Ramachandran outliers of the chain as a percentile score with respect to all X-ray entries followed by that with respect to entries of similar resolution.

The Analysed column shows the number of residues for which the backbone conformation was analysed, and the total number of residues.

Mol	Chain	Analysed	Favoured	Allowed	Outliers	Percentiles	
1	A	335/360 (93%)	326 (97%)	9 (3%)	0	100	100
1	B	336/360 (93%)	315 (94%)	19 (6%)	2 (1%)	25	25
All	All	671/720 (93%)	641 (96%)	28 (4%)	2 (0%)	41	46

All (2) Ramachandran outliers are listed below:

Mol	Chain	Res	Type
1	B	115	ASN
1	B	186	ARG

5.3.2 Protein sidechains [i](#)

In the following table, the Percentiles column shows the percent sidechain outliers of the chain as a percentile score with respect to all X-ray entries followed by that with respect to entries of similar resolution.

The Analysed column shows the number of residues for which the sidechain conformation was analysed, and the total number of residues.

Mol	Chain	Analysed	Rotameric	Outliers	Percentiles	
1	A	297/319 (93%)	278 (94%)	19 (6%)	17	16
1	B	298/319 (93%)	285 (96%)	13 (4%)	28	32
All	All	595/638 (93%)	563 (95%)	32 (5%)	22	22

All (32) residues with a non-rotameric sidechain are listed below:

Mol	Chain	Res	Type
1	A	37	SER
1	A	62	ILE
1	A	74	LEU
1	A	81	GLU
1	A	86	LEU
1	A	87	LEU
1	A	97	GLU
1	A	114	ASN
1	A	121	LYS
1	A	138	LEU
1	A	160	GLU
1	A	167	LEU
1	A	185	THR
1	A	195	LEU
1	A	245	GLU
1	A	253	GLU
1	A	269	ASN
1	A	275	ILE
1	A	333	LEU
1	B	16	THR
1	B	49	ARG
1	B	84	ILE
1	B	87	LEU
1	B	94	ARG
1	B	97	GLU
1	B	102	VAL
1	B	109	MET

Continued on next page...

Continued from previous page...

Mol	Chain	Res	Type
1	B	114	ASN
1	B	119	CYS
1	B	145	ASP
1	B	237	ARG
1	B	275	ILE

Sometimes sidechains can be flipped to improve hydrogen bonding and reduce clashes. All (19) such sidechains are listed below:

Mol	Chain	Res	Type
1	A	14	ASN
1	A	107	HIS
1	A	128	GLN
1	A	148	HIS
1	A	155	ASN
1	A	257	ASN
1	A	264	GLN
1	A	269	ASN
1	B	77	HIS
1	B	107	HIS
1	B	114	ASN
1	B	120	GLN
1	B	128	GLN
1	B	148	HIS
1	B	155	ASN
1	B	257	ASN
1	B	260	GLN
1	B	264	GLN
1	B	269	ASN

5.3.3 RNA [i](#)

There are no RNA molecules in this entry.

5.4 Non-standard residues in protein, DNA, RNA chains [i](#)

There are no non-standard protein/DNA/RNA residues in this entry.

5.5 Carbohydrates [i](#)

There are no monosaccharides in this entry.

5.6 Ligand geometry

6 ligands are modelled in this entry.

In the following table, the Counts columns list the number of bonds (or angles) for which Mogul statistics could be retrieved, the number of bonds (or angles) that are observed in the model and the number of bonds (or angles) that are defined in the Chemical Component Dictionary. The Link column lists molecule types, if any, to which the group is linked. The Z score for a bond length (or angle) is the number of standard deviations the observed value is removed from the expected value. A bond length (or angle) with $|Z| > 2$ is considered an outlier worth inspection. RMSZ is the root-mean-square of all Z scores of the bond lengths (or angles).

Mol	Type	Chain	Res	Link	Bond lengths			Bond angles		
					Counts	RMSZ	# Z > 2	Counts	RMSZ	# Z > 2
2	R24	A	361	-	40,44,44	2.01	9 (22%)	52,64,64	1.70	13 (25%)
2	R24	B	361	-	40,44,44	2.35	8 (20%)	52,64,64	1.59	8 (15%)
3	BOG	B	362	-	20,20,20	1.52	5 (25%)	25,25,25	1.48	3 (12%)
4	MES	A	362	-	12,12,12	1.90	1 (8%)	14,16,16	2.49	6 (42%)
3	BOG	B	1000	-	20,20,20	0.99	2 (10%)	25,25,25	1.22	3 (12%)
3	BOG	A	1000	-	20,20,20	0.90	2 (10%)	25,25,25	0.96	1 (4%)

In the following table, the Chirals column lists the number of chiral outliers, the number of chiral centers analysed, the number of these observed in the model and the number defined in the Chemical Component Dictionary. Similar counts are reported in the Torsion and Rings columns. '-' means no outliers of that kind were identified.

Mol	Type	Chain	Res	Link	Chirals	Torsions	Rings
2	R24	A	361	-	-	2/18/26/26	0/5/5/5
2	R24	B	361	-	-	2/18/26/26	0/5/5/5
3	BOG	B	362	-	-	5/11/31/31	0/1/1/1
4	MES	A	362	-	-	2/6/14/14	0/1/1/1
3	BOG	B	1000	-	-	3/11/31/31	0/1/1/1
3	BOG	A	1000	-	-	4/11/31/31	0/1/1/1

All (27) bond length outliers are listed below:

Mol	Chain	Res	Type	Atoms	Z	Observed(Å)	Ideal(Å)
2	B	361	R24	O40-N38	11.55	1.42	1.22
2	A	361	R24	O40-N38	8.24	1.36	1.22
4	A	362	MES	C8-S	-5.88	1.69	1.77
2	B	361	R24	C1-N38	-4.19	1.35	1.45
2	A	361	R24	C1-N38	-3.61	1.36	1.45

Continued on next page...

Continued from previous page...

Mol	Chain	Res	Type	Atoms	Z	Observed(Å)	Ideal(Å)
2	A	361	R24	C14-N18	-3.40	1.34	1.41
3	B	362	BOG	O1-C1	3.36	1.45	1.40
2	B	361	R24	C26-C25	-2.99	1.35	1.39
2	A	361	R24	C26-C25	-2.96	1.35	1.39
3	A	1000	BOG	O1-C1	2.77	1.44	1.40
2	A	361	R24	C19-N18	-2.65	1.31	1.37
3	B	362	BOG	C3-C2	2.50	1.58	1.52
2	B	361	R24	C32-C33	2.49	1.41	1.36
2	A	361	R24	C36-C35	2.48	1.41	1.36
2	B	361	R24	C22-N21	-2.45	1.35	1.39
3	B	362	BOG	O5-C1	2.38	1.47	1.41
3	B	362	BOG	O3-C3	2.37	1.48	1.43
2	B	361	R24	C14-N18	-2.36	1.36	1.41
2	A	361	R24	C27-C25	2.29	1.55	1.52
3	B	1000	BOG	O5-C5	2.24	1.49	1.44
2	B	361	R24	C19-N21	-2.14	1.33	1.37
2	A	361	R24	C22-N21	-2.13	1.35	1.39
3	B	362	BOG	C6-C5	2.10	1.58	1.51
2	A	361	R24	C6-N7	-2.09	1.33	1.37
2	B	361	R24	C36-C35	2.05	1.40	1.36
3	B	1000	BOG	C4-C5	2.05	1.57	1.53
3	A	1000	BOG	O5-C1	2.03	1.47	1.41

All (34) bond angle outliers are listed below:

Mol	Chain	Res	Type	Atoms	Z	Observed(°)	Ideal(°)
4	A	362	MES	C5-N4-C3	5.69	121.64	108.83
2	A	361	R24	C4-C1-N38	5.12	123.26	118.75
2	B	361	R24	C4-C5-C8	-4.87	120.19	123.91
3	B	362	BOG	C6-C5-C4	4.52	123.58	113.00
2	B	361	R24	C11-C10-C8	4.25	121.73	119.60
4	A	362	MES	C7-N4-C3	3.93	121.29	111.23
2	A	361	R24	C2-C1-N38	-3.93	116.42	119.38
4	A	362	MES	O1S-S-C8	3.90	111.61	106.92
3	B	1000	BOG	C1'-O1-C1	-3.49	108.05	113.84
2	B	361	R24	C4-C1-N38	3.47	121.81	118.75
2	A	361	R24	C27-C25-N24	3.42	124.26	120.59
2	A	361	R24	C4-C5-C8	-3.39	121.32	123.91
2	A	361	R24	C35-C36-C31	-3.08	119.22	121.79
3	B	362	BOG	O5-C5-C4	-2.88	104.45	109.69
3	A	1000	BOG	C1'-O1-C1	-2.86	109.09	113.84
2	B	361	R24	C8-C5-C6	2.80	119.83	118.06

Continued on next page...

Continued from previous page...

Mol	Chain	Res	Type	Atoms	Z	Observed(°)	Ideal(°)
2	A	361	R24	C28-C27-C25	2.75	115.15	109.76
2	A	361	R24	C11-N7-C6	2.65	121.03	116.93
3	B	362	BOG	O5-C5-C6	2.64	113.01	106.44
2	A	361	R24	C29-C27-C25	-2.62	104.62	109.76
2	B	361	R24	C30-C27-C25	2.49	114.65	109.76
2	B	361	R24	C33-C32-C31	-2.47	119.73	121.79
2	B	361	R24	C10-C11-N7	-2.42	120.83	124.58
2	A	361	R24	C32-C31-C36	2.39	119.86	116.27
2	B	361	R24	C29-C27-C25	-2.29	105.26	109.76
4	A	362	MES	C7-N4-C5	2.28	117.06	111.23
4	A	362	MES	C6-C5-N4	-2.25	106.69	110.10
2	A	361	R24	C10-C11-N7	-2.21	121.16	124.58
2	A	361	R24	C8-C5-C6	2.19	119.45	118.06
3	B	1000	BOG	O5-C1-O1	-2.17	104.84	109.97
2	A	361	R24	C33-C32-C31	-2.15	120.00	121.79
2	A	361	R24	C26-C25-N24	-2.12	108.34	111.41
3	B	1000	BOG	C6-C5-C4	2.09	117.90	113.00
4	A	362	MES	C6-O1-C2	2.03	116.66	109.89

There are no chirality outliers.

All (18) torsion outliers are listed below:

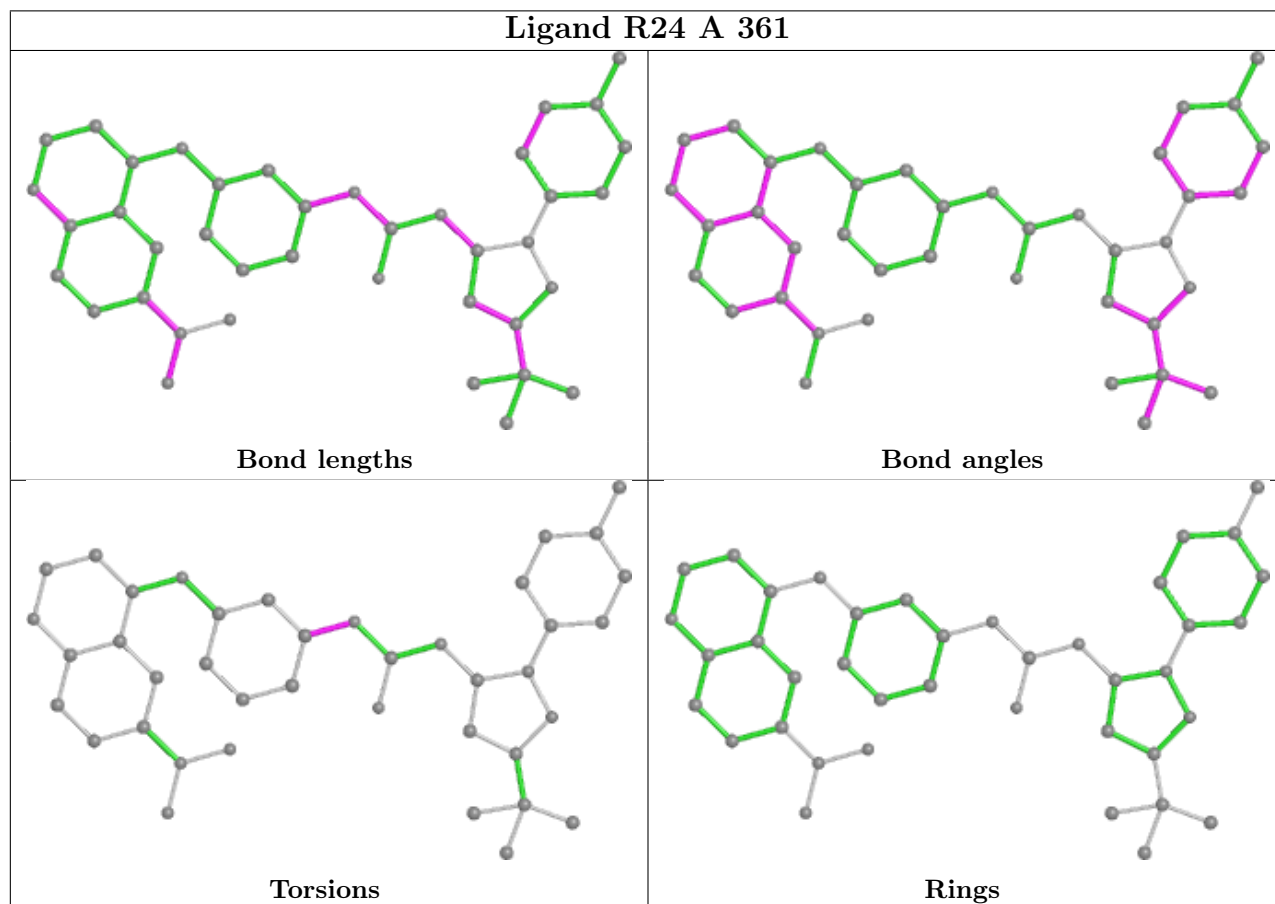
Mol	Chain	Res	Type	Atoms
3	A	1000	BOG	C2'-C1'-O1-C1
4	A	362	MES	C8-C7-N4-C5
3	B	362	BOG	O1-C1'-C2'-C3'
3	B	362	BOG	C1'-C2'-C3'-C4'
3	A	1000	BOG	C4-C5-C6-O6
3	B	362	BOG	C4'-C5'-C6'-C7'
3	A	1000	BOG	C5'-C6'-C7'-C8'
3	B	1000	BOG	C5'-C6'-C7'-C8'
4	A	362	MES	N4-C7-C8-S
3	B	1000	BOG	C2'-C1'-O1-C1
2	A	361	R24	C15-C14-N18-C19
3	B	362	BOG	O5-C5-C6-O6
2	A	361	R24	C13-C14-N18-C19
3	A	1000	BOG	O5-C5-C6-O6
2	B	361	R24	C15-C14-N18-C19
3	B	1000	BOG	C3'-C4'-C5'-C6'
2	B	361	R24	C13-C14-N18-C19
3	B	362	BOG	C4-C5-C6-O6

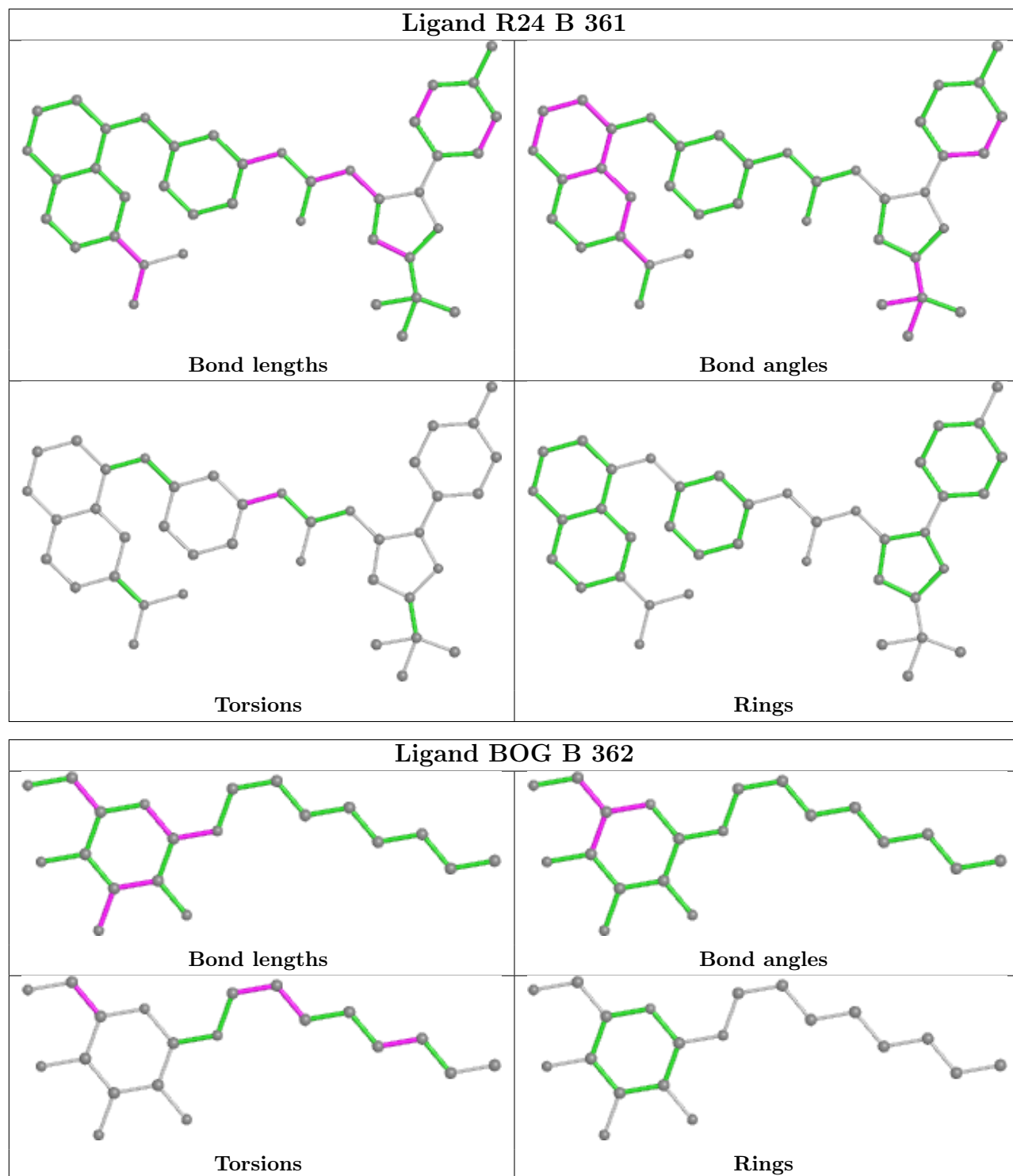
There are no ring outliers.

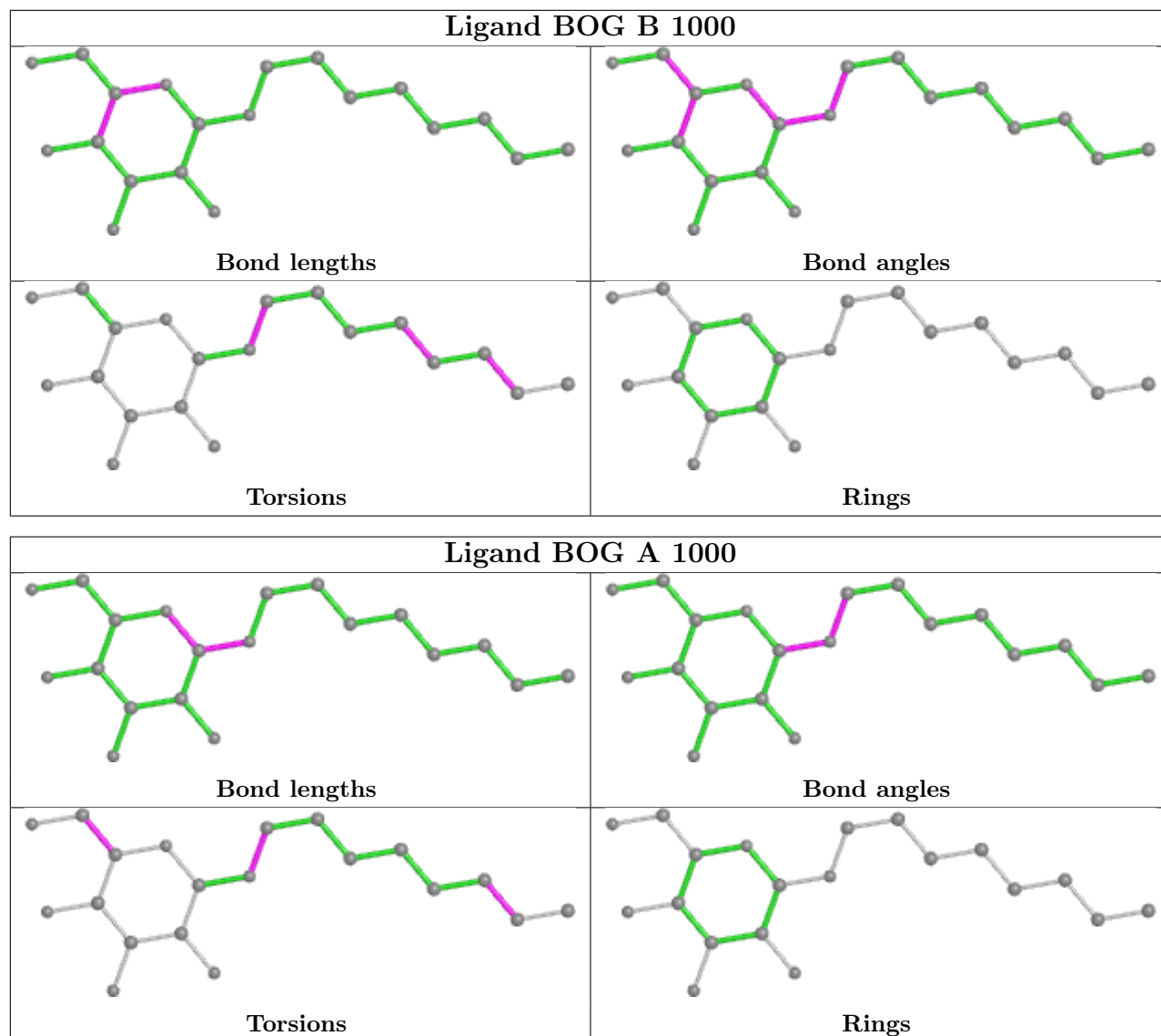
3 monomers are involved in 9 short contacts:

Mol	Chain	Res	Type	Clashes	Symm-Clashes
2	A	361	R24	3	0
3	B	362	BOG	3	0
3	B	1000	BOG	3	0

The following is a two-dimensional graphical depiction of Mogul quality analysis of bond lengths, bond angles, torsion angles, and ring geometry for all instances of the Ligand of Interest. In addition, ligands with molecular weight > 250 and outliers as shown on the validation Tables will also be included. For torsion angles, if less than 5% of the Mogul distribution of torsion angles is within 10 degrees of the torsion angle in question, then that torsion angle is considered an outlier. Any bond that is central to one or more torsion angles identified as an outlier by Mogul will be highlighted in the graph. For rings, the root-mean-square deviation (RMSD) between the ring in question and similar rings identified by Mogul is calculated over all ring torsion angles. If the average RMSD is greater than 60 degrees and the minimal RMSD between the ring in question and any Mogul-identified rings is also greater than 60 degrees, then that ring is considered an outlier. The outliers are highlighted in purple. The color gray indicates Mogul did not find sufficient equivalents in the CSD to analyse the geometry.







5.7 Other polymers [i](#)

There are no such residues in this entry.

5.8 Polymer linkage issues [i](#)

There are no chain breaks in this entry.

6 Fit of model and data

6.1 Protein, DNA and RNA chains

In the following table, the column labelled ‘#RSRZ > 2’ contains the number (and percentage) of RSRZ outliers, followed by percent RSRZ outliers for the chain as percentile scores relative to all X-ray entries and entries of similar resolution. The OWAB column contains the minimum, median, 95th percentile and maximum values of the occupancy-weighted average B-factor per residue. The column labelled ‘Q < 0.9’ lists the number of (and percentage) of residues with an average occupancy less than 0.9.

Mol	Chain	Analysed	<RSRZ>	#RSRZ>2	OWAB(Å ²)	Q<0.9
1	A	339/360 (94%)	-0.20	9 (2%) 54 57	12, 24, 52, 57	1 (0%)
1	B	339/360 (94%)	-0.13	13 (3%) 40 43	12, 28, 51, 67	0
All	All	678/720 (94%)	-0.17	22 (3%) 47 50	12, 26, 52, 67	1 (0%)

All (22) RSRZ outliers are listed below:

Mol	Chain	Res	Type	RSRZ
1	A	183	VAL	5.5
1	B	352	PRO	3.8
1	A	198	MET	3.8
1	B	117	VAL	3.7
1	A	199	HIS	3.2
1	B	94	ARG	3.0
1	B	5	ARG	2.7
1	B	183	VAL	2.7
1	B	14	ASN	2.7
1	A	260	GLN	2.6
1	B	172	ALA	2.5
1	B	331	ASP	2.4
1	A	261	SER	2.4
1	B	329	SER	2.4
1	B	35	TYR	2.3
1	B	198	MET	2.2
1	A	15	LYS	2.2
1	B	199	HIS	2.2
1	A	119	CYS	2.1
1	A	352	PRO	2.1
1	B	97	GLU	2.0
1	A	184	ALA	2.0

6.2 Non-standard residues in protein, DNA, RNA chains [i](#)

There are no non-standard protein/DNA/RNA residues in this entry.

6.3 Carbohydrates [i](#)

There are no monosaccharides in this entry.

6.4 Ligands [i](#)

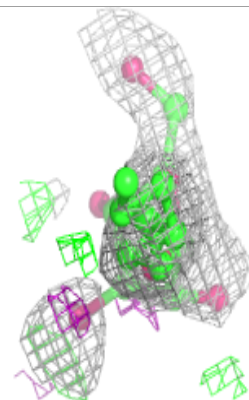
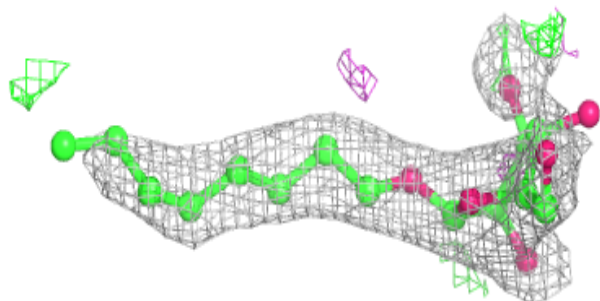
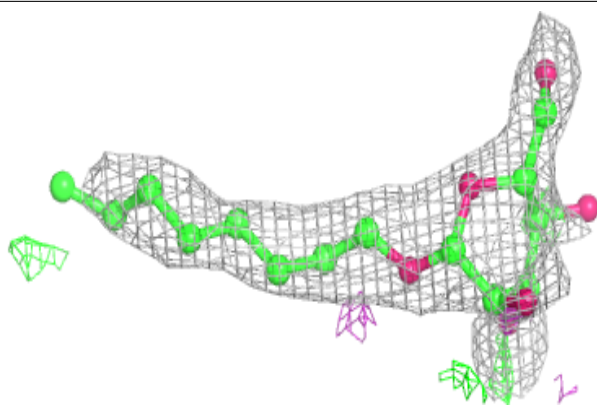
In the following table, the Atoms column lists the number of modelled atoms in the group and the number defined in the chemical component dictionary. The B-factors column lists the minimum, median, 95th percentile and maximum values of B factors of atoms in the group. The column labelled 'Q< 0.9' lists the number of atoms with occupancy less than 0.9.

Mol	Type	Chain	Res	Atoms	RSCC	RSR	B-factors(\AA^2)	Q<0.9
3	BOG	B	362	20/20	0.68	0.26	45,58,62,63	0
4	MES	A	362	12/12	0.90	0.16	44,47,50,51	0
2	R24	A	361	40/40	0.94	0.12	12,15,20,28	0
2	R24	B	361	40/40	0.94	0.11	13,19,26,31	0
3	BOG	A	1000	20/20	0.95	0.11	30,34,37,38	0
3	BOG	B	1000	20/20	0.96	0.11	17,26,31,34	0

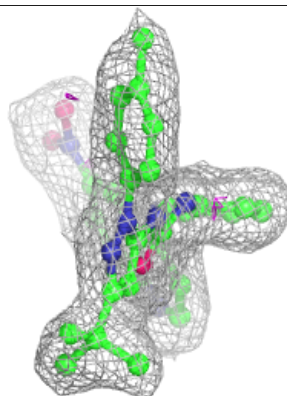
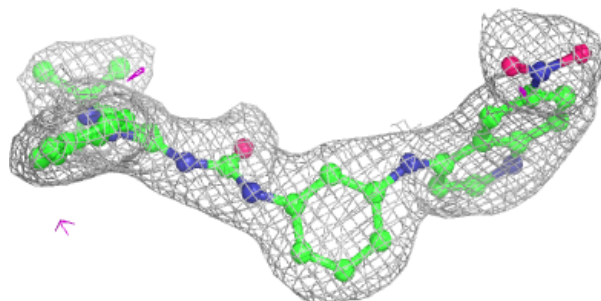
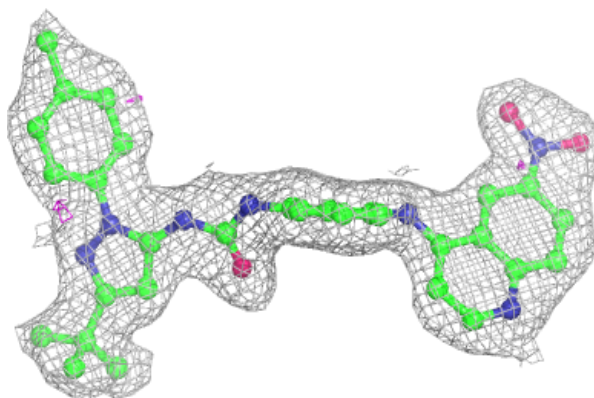
The following is a graphical depiction of the model fit to experimental electron density of all instances of the Ligand of Interest. In addition, ligands with molecular weight > 250 and outliers as shown on the geometry validation Tables will also be included. Each fit is shown from different orientation to approximate a three-dimensional view.

Electron density around BOG B 362:

$2mF_o-DF_c$ (at 0.7 rmsd) in gray
 mF_o-DF_c (at 3 rmsd) in purple (negative)
and green (positive)

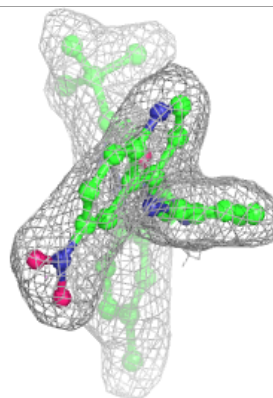
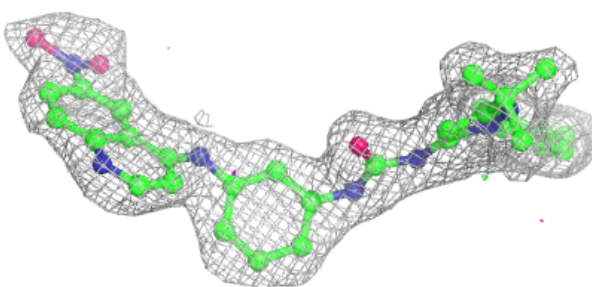
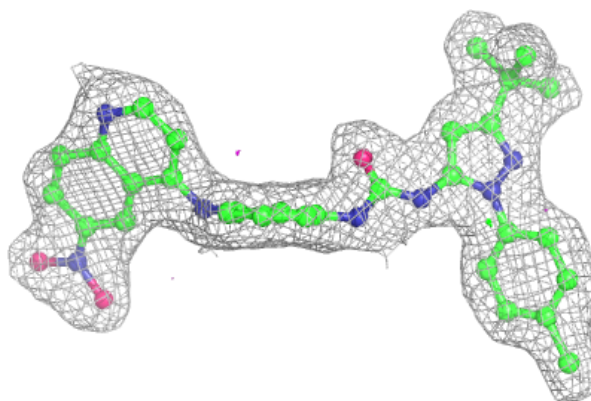
**Electron density around R24 A 361:**

$2mF_o-DF_c$ (at 0.7 rmsd) in gray
 mF_o-DF_c (at 3 rmsd) in purple (negative)
and green (positive)

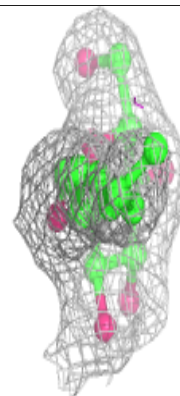
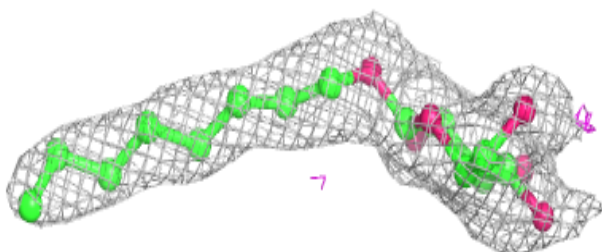
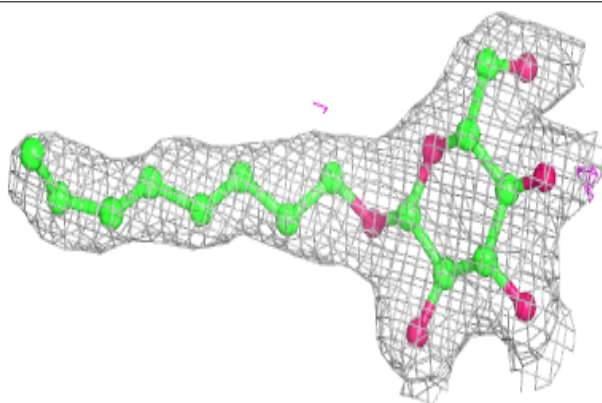


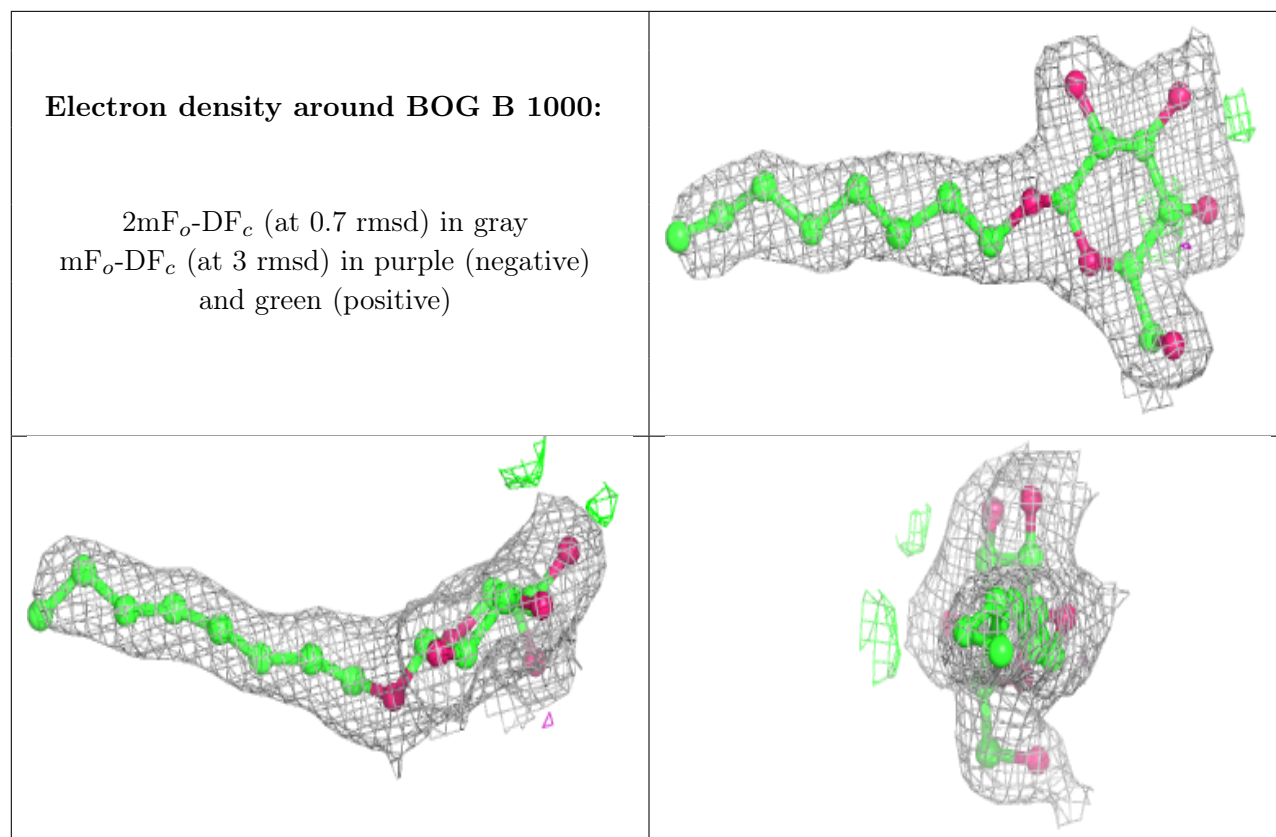
Electron density around R24 B 361:

$2mF_o-DF_c$ (at 0.7 rmsd) in gray
 mF_o-DF_c (at 3 rmsd) in purple (negative)
and green (positive)

**Electron density around BOG A 1000:**

$2mF_o-DF_c$ (at 0.7 rmsd) in gray
 mF_o-DF_c (at 3 rmsd) in purple (negative)
and green (positive)





6.5 Other polymers [i](#)

There are no such residues in this entry.