



# Full wwPDB X-ray Structure Validation Report ⓘ

Nov 2, 2021 – 09:28 AM EDT

PDB ID : 3HVN  
Title : Crystal structure of cytotoxin protein suilysin from *Streptococcus suis*  
Authors : Xu, L.; Huang, B.; Du, H.; Zhang, C.X.; Xu, J.; Li, X.; Rao, Z.  
Deposited on : 2009-06-16  
Resolution : 2.85 Å(reported)

This is a Full wwPDB X-ray Structure Validation Report for a publicly released PDB entry.

We welcome your comments at [validation@mail.wwpdb.org](mailto:validation@mail.wwpdb.org)

A user guide is available at

<https://www.wwpdb.org/validation/2017/XrayValidationReportHelp>

with specific help available everywhere you see the ⓘ symbol.

---

The following versions of software and data (see [references ⓘ](#)) were used in the production of this report:

MolProbity : 4.02b-467  
Mogul : 1.8.5 (274361), CSD as541be (2020)  
Xtriage (Phenix) : 1.13  
EDS : 2.23.2  
Percentile statistics : 20191225.v01 (using entries in the PDB archive December 25th 2019)  
Refmac : 5.8.0158  
CCP4 : 7.0.044 (Gargrove)  
Ideal geometry (proteins) : Engh & Huber (2001)  
Ideal geometry (DNA, RNA) : Parkinson et al. (1996)  
Validation Pipeline (wwPDB-VP) : 2.23.2

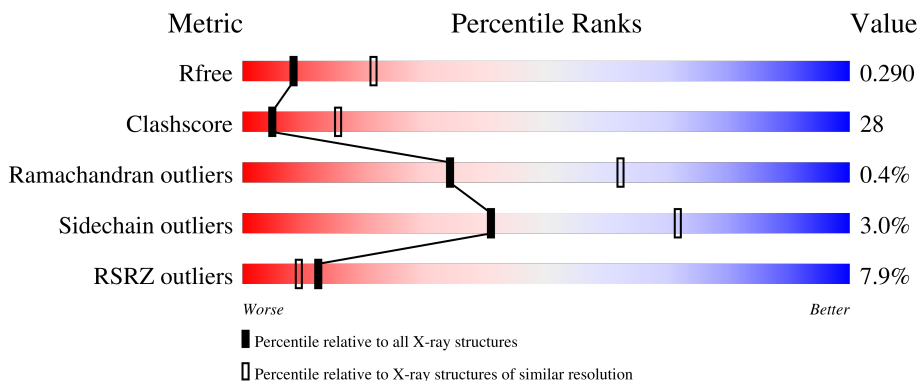
# 1 Overall quality at a glance

The following experimental techniques were used to determine the structure:

*X-RAY DIFFRACTION*

The reported resolution of this entry is 2.85 Å.

Percentile scores (ranging between 0-100) for global validation metrics of the entry are shown in the following graphic. The table shows the number of entries on which the scores are based.



Metric	Whole archive (#Entries)	Similar resolution (#Entries, resolution range(Å))
$R_{free}$	130704	3168 (2.90-2.82)
Clashscore	141614	3438 (2.90-2.82)
Ramachandran outliers	138981	3348 (2.90-2.82)
Sidechain outliers	138945	3351 (2.90-2.82)
RSRZ outliers	127900	3103 (2.90-2.82)

The table below summarises the geometric issues observed across the polymeric chains and their fit to the electron density. The red, orange, yellow and green segments of the lower bar indicate the fraction of residues that contain outliers for  $\geq 3$ , 2, 1 and 0 types of geometric quality criteria respectively. A grey segment represents the fraction of residues that are not modelled. The numeric value for each fraction is indicated below the corresponding segment, with a dot representing fractions  $\leq 5\%$ . The upper red bar (where present) indicates the fraction of residues that have poor fit to the electron density. The numeric value is given above the bar.

Mol	Chain	Length	Quality of chain
1	A	508	

## 2 Entry composition [i](#)

There are 4 unique types of molecules in this entry. The entry contains 3675 atoms, of which 0 are hydrogens and 0 are deuteriums.

In the tables below, the ZeroOcc column contains the number of atoms modelled with zero occupancy, the AltConf column contains the number of residues with at least one atom in alternate conformation and the Trace column contains the number of residues modelled with at most 2 atoms.

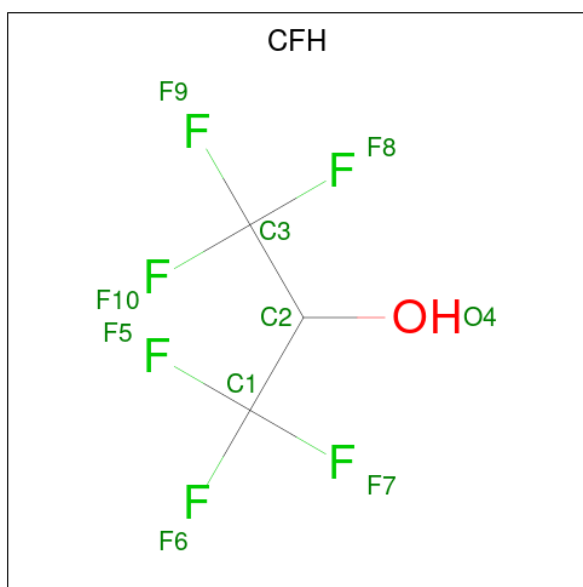
- Molecule 1 is a protein called Hemolysin.

Mol	Chain	Residues	Atoms					ZeroOcc	AltConf	Trace
			Total	C	N	O	S			
1	A	466	3648	2298	610	735	5	0	0	0

There are 13 discrepancies between the modelled and reference sequences:

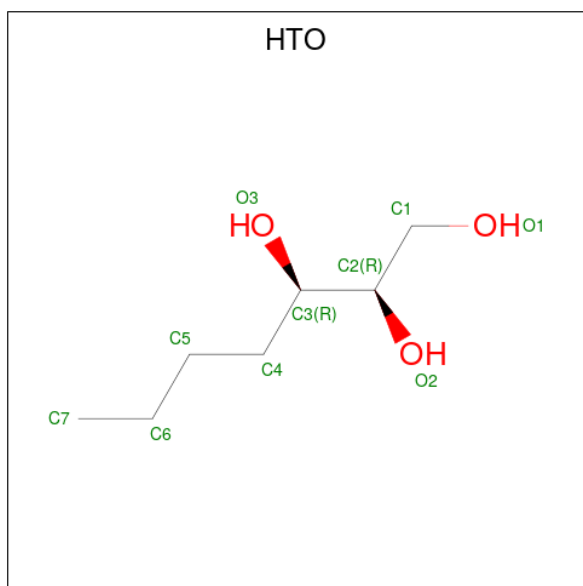
Chain	Residue	Modelled	Actual	Comment	Reference
A	-3	GLY	-	expression tag	UNP Q55996
A	-2	PRO	-	expression tag	UNP Q55996
A	-1	LEU	-	expression tag	UNP Q55996
A	0	GLY	-	expression tag	UNP Q55996
A	1	SER	-	expression tag	UNP Q55996
A	353	LEU	PRO	engineered mutation	UNP Q55996
A	498	LEU	-	expression tag	UNP Q55996
A	499	GLU	-	expression tag	UNP Q55996
A	500	ARG	-	expression tag	UNP Q55996
A	501	PRO	-	expression tag	UNP Q55996
A	502	HIS	-	expression tag	UNP Q55996
A	503	ARG	-	expression tag	UNP Q55996
A	504	ASP	-	expression tag	UNP Q55996

- Molecule 2 is 1,1,1,3,3,3-hexafluoropropan-2-ol (three-letter code: CFH) (formula:  $C_3H_2F_6O$ ).



Mol	Chain	Residues	Atoms				ZeroOcc	AltConf
			Total	C	F	O		
2	A	1	10	3	6	1	0	0

- Molecule 3 is HEPTANE-1,2,3-TRIOL (three-letter code: HTO) (formula:  $C_7H_{16}O_3$ ).



Mol	Chain	Residues	Atoms			ZeroOcc	AltConf
			Total	C	O		
3	A	1	10	7	3	0	0

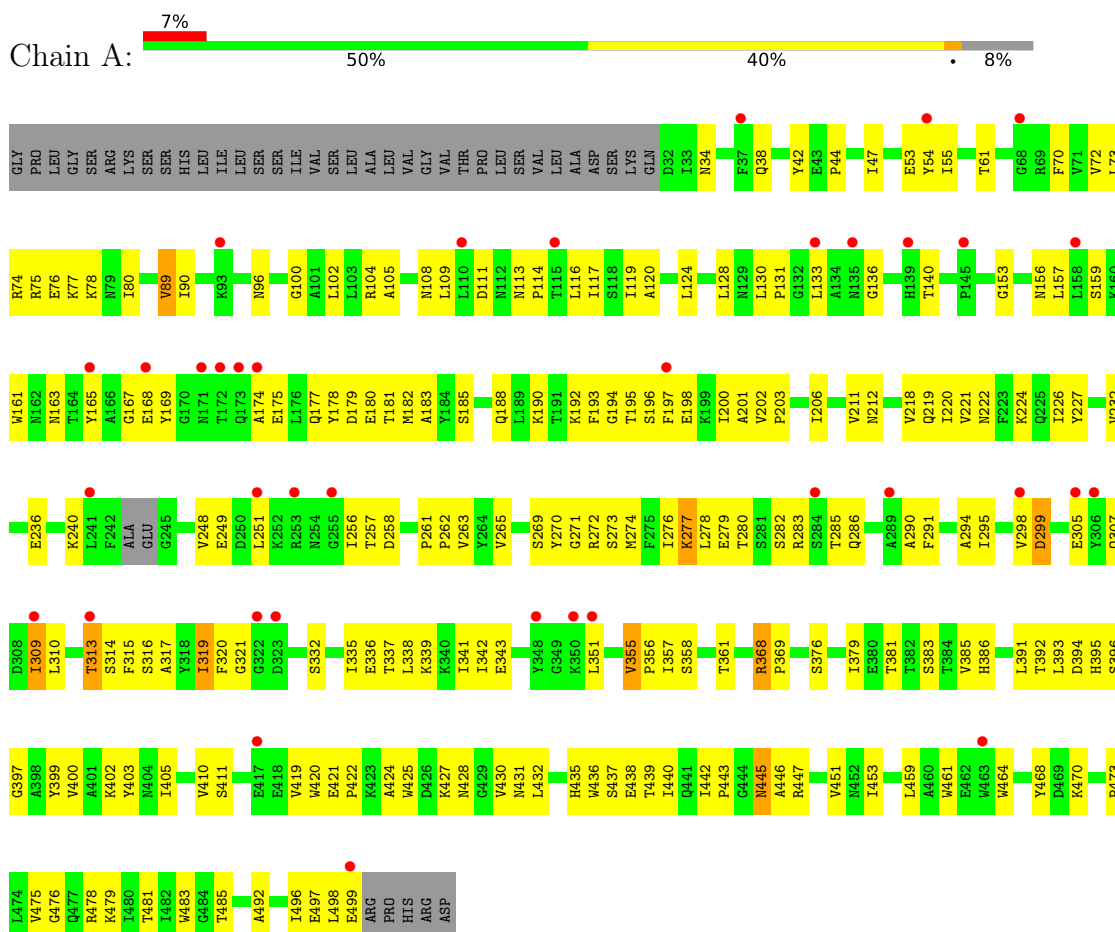
- Molecule 4 is water.

Mol	Chain	Residues	Atoms	ZeroOcc	AltConf
4	A	7	Total O 7 7	0	0

### 3 Residue-property plots

These plots are drawn for all protein, RNA, DNA and oligosaccharide chains in the entry. The first graphic for a chain summarises the proportions of the various outlier classes displayed in the second graphic. The second graphic shows the sequence view annotated by issues in geometry and electron density. Residues are color-coded according to the number of geometric quality criteria for which they contain at least one outlier: green = 0, yellow = 1, orange = 2 and red = 3 or more. A red dot above a residue indicates a poor fit to the electron density ( $RSRZ > 2$ ). Stretches of 2 or more consecutive residues without any outlier are shown as a green connector. Residues present in the sample, but not in the model, are shown in grey.

- Molecule 1: Hemolysin



## 4 Data and refinement statistics

Property	Value	Source
Space group	P 31 2 1	Depositor
Cell constants a, b, c, $\alpha$ , $\beta$ , $\gamma$	95.72Å 95.72Å 117.05Å 90.00° 90.00° 120.00°	Depositor
Resolution (Å)	28.41 – 2.85 47.81 – 2.85	Depositor EDS
% Data completeness (in resolution range)	85.1 (28.41-2.85) 85.2 (47.81-2.85)	Depositor EDS
$R_{merge}$	0.05	Depositor
$R_{sym}$	(Not available)	Depositor
$\langle I/\sigma(I) \rangle$ <sup>1</sup>	4.53 (at 2.86Å)	Xtrriage
Refinement program	PHENIX	Depositor
R, $R_{free}$	0.279 , 0.294 0.275 , 0.290	Depositor DCC
$R_{free}$ test set	673 reflections (5.11%)	wwPDB-VP
Wilson B-factor (Å <sup>2</sup> )	81.2	Xtrriage
Anisotropy	0.591	Xtrriage
Bulk solvent $k_{sol}$ (e/Å <sup>3</sup> ), $B_{sol}$ (Å <sup>2</sup> )	0.29 , 82.6	EDS
L-test for twinning <sup>2</sup>	$\langle  L  \rangle = 0.49$ , $\langle L^2 \rangle = 0.32$	Xtrriage
Estimated twinning fraction	0.020 for -h,-k,l	Xtrriage
$F_o, F_c$ correlation	0.92	EDS
Total number of atoms	3675	wwPDB-VP
Average B, all atoms (Å <sup>2</sup> )	131.0	wwPDB-VP

Xtrriage's analysis on translational NCS is as follows: *The largest off-origin peak in the Patterson function is 5.79% of the height of the origin peak. No significant pseudotranslation is detected.*

<sup>1</sup>Intensities estimated from amplitudes.

<sup>2</sup>Theoretical values of  $\langle |L| \rangle$ ,  $\langle L^2 \rangle$  for acentric reflections are 0.5, 0.333 respectively for untwinned datasets, and 0.375, 0.2 for perfectly twinned datasets.

## 5 Model quality [i](#)

### 5.1 Standard geometry [i](#)

Bond lengths and bond angles in the following residue types are not validated in this section: CFH, HTO

The Z score for a bond length (or angle) is the number of standard deviations the observed value is removed from the expected value. A bond length (or angle) with  $|Z| > 5$  is considered an outlier worth inspection. RMSZ is the root-mean-square of all Z scores of the bond lengths (or angles).

Mol	Chain	Bond lengths		Bond angles	
		RMSZ	# Z  >5	RMSZ	# Z  >5
1	A	0.21	0/3722	0.38	0/5070

There are no bond length outliers.

There are no bond angle outliers.

There are no chirality outliers.

There are no planarity outliers.

### 5.2 Too-close contacts [i](#)

In the following table, the Non-H and H(model) columns list the number of non-hydrogen atoms and hydrogen atoms in the chain respectively. The H(added) column lists the number of hydrogen atoms added and optimized by MolProbity. The Clashes column lists the number of clashes within the asymmetric unit, whereas Symm-Clashes lists symmetry-related clashes.

Mol	Chain	Non-H	H(model)	H(added)	Clashes	Symm-Clashes
1	A	3648	0	3544	199	0
2	A	10	0	2	0	0
3	A	10	0	16	3	0
4	A	7	0	0	0	0
All	All	3675	0	3562	199	0

The all-atom clashscore is defined as the number of clashes found per 1000 atoms (including hydrogen atoms). The all-atom clashscore for this structure is 28.

All (199) close contacts within the same asymmetric unit are listed below, sorted by their clash magnitude.



Atom-1	Atom-2	Interatomic distance (Å)	Clash overlap (Å)
1:A:436:TRP:CH2	1:A:438:GLU:HB3	1.72	1.23
1:A:175:GLU:HB2	1:A:226:ILE:HG22	1.36	1.06
1:A:436:TRP:CH2	1:A:438:GLU:CB	2.57	0.85
1:A:436:TRP:HH2	1:A:438:GLU:HB3	1.41	0.83
1:A:427:LYS:O	1:A:430:VAL:HB	1.81	0.81
1:A:273:SER:HB2	1:A:357:ILE:HB	1.65	0.79
1:A:168:GLU:HG3	1:A:169:TYR:H	1.46	0.78
1:A:181:THR:HG21	1:A:192:LYS:HG2	1.65	0.78
1:A:274:MET:HG3	1:A:319:ILE:HG22	1.65	0.78
1:A:285:THR:HG22	1:A:286:GLN:HG3	1.65	0.78
1:A:395:HIS:O	1:A:435:HIS:HA	1.85	0.77
1:A:396:SER:O	1:A:483:TRP:HA	1.86	0.74
1:A:105:ALA:HB3	1:A:261:PRO:O	1.89	0.72
1:A:177:GLN:HB3	1:A:224:LYS:HB2	1.71	0.71
1:A:175:GLU:HB2	1:A:226:ILE:CG2	2.19	0.71
1:A:183:ALA:HB2	1:A:220:ILE:HD13	1.71	0.71
1:A:179:ASP:HB2	1:A:222:ASN:HB3	1.73	0.70
1:A:185:SER:O	1:A:188:GLN:HG3	1.93	0.69
1:A:453:ILE:CG1	1:A:468:TYR:HB3	2.24	0.68
1:A:473:PRO:HD2	1:A:478:ARG:HH22	1.58	0.68
1:A:90:ILE:HG13	1:A:196:SER:HB2	1.75	0.67
1:A:73:LEU:HD21	1:A:75:ARG:HE	1.60	0.67
1:A:202:VAL:HB	1:A:203:PRO:HD3	1.76	0.67
1:A:90:ILE:HG13	1:A:196:SER:CB	2.25	0.67
1:A:446:ALA:O	1:A:447:ARG:HG3	1.95	0.67
1:A:183:ALA:HB3	1:A:218:VAL:HG13	1.77	0.67
1:A:496:ILE:HG22	1:A:497:GLU:H	1.60	0.67
1:A:337:THR:O	1:A:341:ILE:HB	1.95	0.66
1:A:190:LYS:HD3	1:A:198:GLU:HB2	1.77	0.66
1:A:400:VAL:HG12	1:A:431:ASN:HB2	1.76	0.66
1:A:89:VAL:HG22	1:A:357:ILE:HA	1.78	0.66
1:A:338:LEU:O	1:A:341:ILE:HG22	1.95	0.66
1:A:248:VAL:HG13	1:A:249:GLU:H	1.61	0.65
1:A:313:THR:OG1	1:A:335:ILE:HB	1.96	0.64
1:A:436:TRP:HE1	3:A:506:HTO:C7	2.11	0.64
1:A:226:ILE:HG12	1:A:269:SER:HB3	1.79	0.64
1:A:53:GLU:HG3	1:A:54:TYR:H	1.63	0.63
1:A:445:ASN:HD22	1:A:445:ASN:H	1.47	0.62
1:A:432:LEU:HD13	1:A:436:TRP:CD2	2.35	0.62
1:A:309:ILE:O	1:A:313:THR:HG23	1.99	0.62
1:A:391:LEU:HB3	1:A:440:ILE:HG22	1.82	0.61
1:A:174:ALA:HB1	1:A:226:ILE:O	2.01	0.61

*Continued on next page...*

*Continued from previous page...*

Atom-1	Atom-2	Interatomic distance (Å)	Clash overlap (Å)
1:A:265:VAL:HA	1:A:361:THR:HG22	1.82	0.60
1:A:453:ILE:HG12	1:A:468:TYR:HB3	1.83	0.60
1:A:227:TYR:HE1	1:A:272:ARG:HG3	1.67	0.60
1:A:436:TRP:CZ2	1:A:438:GLU:CB	2.86	0.59
1:A:498:LEU:HG	1:A:499:GLU:HG3	1.83	0.58
1:A:55:ILE:HD11	1:A:379:ILE:HG12	1.84	0.58
1:A:394:ASP:HB3	1:A:481:THR:HG22	1.83	0.58
1:A:96:ASN:HD21	1:A:116:LEU:HB2	1.68	0.58
1:A:130:LEU:HB3	1:A:133:LEU:HD23	1.86	0.58
1:A:496:ILE:HG22	1:A:497:GLU:N	2.18	0.57
1:A:227:TYR:HB3	1:A:351:LEU:HD23	1.87	0.57
1:A:425:TRP:HB3	1:A:428:ASN:OD1	2.04	0.57
1:A:182:MET:SD	1:A:219:GLN:HB2	2.44	0.57
1:A:294:ALA:HB2	1:A:310:LEU:HD21	1.85	0.57
1:A:105:ALA:CB	1:A:261:PRO:O	2.53	0.56
1:A:335:ILE:HG23	1:A:336:GLU:H	1.69	0.56
1:A:424:ALA:HB1	1:A:428:ASN:ND2	2.20	0.56
1:A:130:LEU:HD22	1:A:133:LEU:HG	1.88	0.56
1:A:44:PRO:HG2	1:A:368:ARG:HH21	1.71	0.55
1:A:153:GLY:HA2	1:A:156:ASN:ND2	2.22	0.55
1:A:42:TYR:HE1	1:A:44:PRO:HG3	1.71	0.55
1:A:277:LYS:HE3	1:A:316:SER:OG	2.07	0.55
1:A:42:TYR:CE1	1:A:44:PRO:HG3	2.42	0.55
1:A:391:LEU:HB3	1:A:440:ILE:CG2	2.37	0.55
1:A:197:PHE:CZ	1:A:220:ILE:HG21	2.42	0.55
1:A:55:ILE:HG21	1:A:77:LYS:HE3	1.89	0.54
1:A:270:TYR:CE2	1:A:356:PRO:HG3	2.42	0.54
1:A:111:ASP:HA	1:A:195:THR:HG21	1.89	0.54
1:A:410:VAL:HG22	1:A:420:TRP:NE1	2.23	0.54
1:A:157:LEU:O	1:A:161:TRP:HD1	1.90	0.54
1:A:193:PHE:CE2	1:A:222:ASN:HB2	2.42	0.54
1:A:116:LEU:HD23	1:A:117:ILE:N	2.23	0.53
1:A:405:ILE:CG1	1:A:425:TRP:HB2	2.39	0.53
1:A:355:VAL:HG22	1:A:356:PRO:HD2	1.89	0.52
1:A:119:ILE:HG12	1:A:120:ALA:N	2.25	0.52
1:A:339:LYS:O	1:A:342:ILE:HG12	2.10	0.52
1:A:424:ALA:HB1	1:A:428:ASN:HD22	1.74	0.52
1:A:290:ALA:HB1	1:A:309:ILE:HG13	1.92	0.52
1:A:119:ILE:HG12	1:A:120:ALA:H	1.74	0.51
1:A:70:PHE:CD1	1:A:445:ASN:HB3	2.46	0.51
1:A:278:LEU:HD21	1:A:295:ILE:HD11	1.91	0.51

*Continued on next page...*

*Continued from previous page...*

Atom-1	Atom-2	Interatomic distance (Å)	Clash overlap (Å)
1:A:70:PHE:HB3	1:A:386:HIS:HB2	1.93	0.51
1:A:481:THR:OG1	1:A:492:ALA:HB3	2.11	0.51
1:A:80:ILE:HG22	1:A:376:SER:O	2.10	0.51
1:A:276:ILE:HG23	1:A:317:ALA:HB2	1.93	0.51
1:A:436:TRP:CZ2	1:A:438:GLU:HB2	2.46	0.51
1:A:161:TRP:O	1:A:165:TYR:HB3	2.10	0.51
1:A:273:SER:HB3	1:A:320:PHE:CZ	2.46	0.51
1:A:105:ALA:HB2	1:A:263:VAL:HG13	1.93	0.51
1:A:227:TYR:CE1	1:A:272:ARG:HG3	2.44	0.50
1:A:298:VAL:O	1:A:299:ASP:OD1	2.29	0.50
1:A:128:LEU:HB2	1:A:157:LEU:HD13	1.93	0.50
1:A:396:SER:C	1:A:483:TRP:HA	2.32	0.50
1:A:44:PRO:O	1:A:47:ILE:HG22	2.12	0.50
1:A:227:TYR:HD1	1:A:271:GLY:HA2	1.76	0.50
1:A:193:PHE:HE2	1:A:222:ASN:HB2	1.77	0.49
1:A:483:TRP:HZ3	1:A:492:ALA:HB2	1.77	0.49
1:A:72:VAL:O	1:A:383:SER:HA	2.12	0.49
1:A:236:GLU:H	1:A:240:LYS:HD3	1.76	0.49
1:A:397:GLY:HA3	1:A:399:TYR:CZ	2.48	0.49
1:A:468:TYR:CZ	1:A:470:LYS:HD2	2.48	0.49
1:A:168:GLU:HG3	1:A:169:TYR:N	2.22	0.48
1:A:102:LEU:HD22	1:A:117:ILE:HB	1.95	0.48
1:A:224:LYS:HG2	1:A:357:ILE:HD12	1.94	0.48
1:A:76:GLU:OE2	1:A:78:LYS:HE3	2.14	0.48
1:A:90:ILE:HD12	1:A:200:ILE:HD13	1.94	0.48
1:A:178:TYR:HE1	1:A:295:ILE:HG21	1.78	0.48
1:A:396:SER:O	1:A:483:TRP:CA	2.57	0.48
1:A:435:HIS:O	3:A:506:HTO:O1	2.30	0.48
1:A:251:LEU:HB3	1:A:256:ILE:HD12	1.96	0.48
1:A:400:VAL:CG1	1:A:431:ASN:HB2	2.43	0.48
1:A:276:ILE:HD13	1:A:338:LEU:HD11	1.95	0.47
1:A:70:PHE:CG	1:A:445:ASN:HB3	2.49	0.47
1:A:269:SER:HB2	1:A:358:SER:OG	2.15	0.47
1:A:310:LEU:O	1:A:335:ILE:HG21	2.14	0.47
1:A:459:LEU:HD13	1:A:461:TRP:CZ2	2.49	0.47
1:A:496:ILE:HD12	1:A:496:ILE:N	2.29	0.47
1:A:307:GLN:HG2	1:A:310:LEU:HB2	1.96	0.47
1:A:89:VAL:HG21	1:A:356:PRO:O	2.14	0.47
1:A:335:ILE:HG23	1:A:336:GLU:N	2.30	0.47
1:A:90:ILE:HG13	1:A:196:SER:HB3	1.95	0.47
1:A:402:LYS:HG3	1:A:464:TRP:CH2	2.49	0.47

*Continued on next page...*

*Continued from previous page...*

Atom-1	Atom-2	Interatomic distance (Å)	Clash overlap (Å)
1:A:226:ILE:CG1	1:A:269:SER:HB3	2.44	0.47
1:A:309:ILE:HD13	1:A:310:LEU:H	1.80	0.47
1:A:393:LEU:HD22	1:A:403:TYR:HE2	1.80	0.46
1:A:104:ARG:HG2	1:A:117:ILE:HD11	1.97	0.46
1:A:227:TYR:CD1	1:A:271:GLY:HA2	2.49	0.46
1:A:197:PHE:HA	1:A:200:ILE:HG12	1.97	0.46
1:A:257:THR:HG22	1:A:258:ASP:H	1.80	0.46
1:A:468:TYR:OH	1:A:470:LYS:HD2	2.16	0.46
1:A:211:VAL:CG2	1:A:218:VAL:HG12	2.45	0.46
1:A:425:TRP:CZ2	1:A:427:LYS:HD2	2.50	0.46
1:A:219:GLN:HE21	1:A:221:VAL:CG2	2.29	0.46
1:A:411:SER:HB3	1:A:419:VAL:HB	1.97	0.46
1:A:197:PHE:HE2	1:A:206:ILE:HD11	1.81	0.46
1:A:307:GLN:HG3	1:A:310:LEU:HD12	1.97	0.46
1:A:277:LYS:HD2	1:A:277:LYS:C	2.37	0.45
1:A:280:THR:HG22	1:A:282:SER:H	1.81	0.45
1:A:257:THR:HG22	1:A:258:ASP:N	2.32	0.45
1:A:436:TRP:HZ2	1:A:438:GLU:OE1	2.00	0.45
1:A:200:ILE:C	1:A:203:PRO:HD2	2.37	0.45
1:A:392:THR:HA	1:A:439:THR:HA	1.98	0.45
1:A:159:SER:O	1:A:163:ASN:HB2	2.16	0.45
1:A:283:ARG:HG3	1:A:385:VAL:HG12	1.99	0.45
1:A:73:LEU:HD11	1:A:75:ARG:HH21	1.82	0.45
1:A:108:ASN:HB3	1:A:113:ASN:O	2.16	0.45
1:A:291:PHE:HE1	1:A:313:THR:HG22	1.80	0.45
1:A:226:ILE:HD11	1:A:269:SER:C	2.37	0.44
1:A:212:ASN:O	1:A:381:THR:HG21	2.17	0.44
1:A:261:PRO:HA	1:A:262:PRO:HD3	1.73	0.44
1:A:309:ILE:HG12	1:A:310:LEU:N	2.32	0.44
1:A:368:ARG:HG3	1:A:369:PRO:N	2.33	0.44
1:A:226:ILE:CD1	1:A:269:SER:HB3	2.48	0.44
1:A:279:GLU:HG3	1:A:314:SER:OG	2.18	0.44
1:A:113:ASN:N	1:A:114:PRO:HD3	2.32	0.43
1:A:405:ILE:HG13	1:A:425:TRP:HB2	2.00	0.43
1:A:315:PHE:CD2	1:A:338:LEU:HB2	2.53	0.43
1:A:393:LEU:O	1:A:437:SER:HA	2.18	0.43
1:A:197:PHE:HA	1:A:200:ILE:CG1	2.48	0.43
1:A:335:ILE:CG1	1:A:339:LYS:HE3	2.48	0.43
1:A:479:LYS:HE2	1:A:481:THR:CG2	2.48	0.43
1:A:153:GLY:HA2	1:A:156:ASN:HD21	1.82	0.43
1:A:197:PHE:O	1:A:201:ALA:HB2	2.19	0.43

*Continued on next page...*

*Continued from previous page...*

Atom-1	Atom-2	Interatomic distance (Å)	Clash overlap (Å)
1:A:405:ILE:HG22	1:A:451:VAL:HG13	2.01	0.43
1:A:436:TRP:HE1	3:A:506:HTO:H71	1.83	0.43
1:A:178:TYR:CE2	1:A:180:GLU:HB3	2.54	0.43
1:A:393:LEU:HD13	1:A:403:TYR:CE2	2.54	0.43
1:A:128:LEU:HD23	1:A:161:TRP:NE1	2.34	0.43
1:A:391:LEU:O	1:A:440:ILE:HG22	2.19	0.43
1:A:100:GLY:N	1:A:232:VAL:HG21	2.34	0.42
1:A:393:LEU:HD13	1:A:403:TYR:CD2	2.54	0.42
1:A:272:ARG:HG2	1:A:321:GLY:C	2.40	0.42
1:A:136:GLY:HA3	1:A:161:TRP:HH2	1.85	0.42
1:A:335:ILE:HG13	1:A:339:LYS:HE3	2.01	0.42
1:A:351:LEU:O	1:A:351:LEU:HD13	2.19	0.42
1:A:283:ARG:HA	1:A:283:ARG:HD3	1.79	0.42
1:A:190:LYS:HA	1:A:194:GLY:O	2.20	0.42
1:A:475:VAL:HG22	1:A:476:GLY:N	2.34	0.42
1:A:248:VAL:HG13	1:A:249:GLU:N	2.33	0.41
1:A:270:TYR:HE2	1:A:356:PRO:HG3	1.84	0.41
1:A:128:LEU:HD23	1:A:161:TRP:CD1	2.55	0.41
1:A:165:TYR:CE2	1:A:167:GLY:HA3	2.55	0.41
1:A:226:ILE:HD12	1:A:226:ILE:HA	1.82	0.41
1:A:427:LYS:O	1:A:430:VAL:CB	2.59	0.41
1:A:475:VAL:HG22	1:A:476:GLY:H	1.84	0.41
1:A:181:THR:CG2	1:A:192:LYS:HG2	2.43	0.41
1:A:282:SER:HB3	1:A:309:ILE:HG22	2.01	0.41
1:A:34:ASN:O	1:A:38:GLN:HG3	2.20	0.41
1:A:61:THR:HB	1:A:74:ARG:HG2	2.03	0.41
1:A:421:GLU:HA	1:A:422:PRO:HD3	1.89	0.41
1:A:459:LEU:HD13	1:A:461:TRP:CH2	2.56	0.41
1:A:442:ILE:HA	1:A:443:PRO:HD3	1.91	0.40
1:A:316:SER:HA	1:A:332:SER:HA	2.02	0.40
1:A:61:THR:HG22	1:A:74:ARG:HA	2.04	0.40
1:A:109:LEU:HD22	1:A:263:VAL:HG21	2.03	0.40
1:A:290:ALA:CB	1:A:309:ILE:HG13	2.51	0.40
1:A:342:ILE:HG13	1:A:343:GLU:N	2.37	0.40

There are no symmetry-related clashes.

## 5.3 Torsion angles [i](#)

### 5.3.1 Protein backbone [i](#)

In the following table, the Percentiles column shows the percent Ramachandran outliers of the chain as a percentile score with respect to all X-ray entries followed by that with respect to entries of similar resolution.

The Analysed column shows the number of residues for which the backbone conformation was analysed, and the total number of residues.

Mol	Chain	Analysed	Favoured	Allowed	Outliers	Percentiles
1	A	462/508 (91%)	402 (87%)	58 (13%)	2 (0%)	34 62

All (2) Ramachandran outliers are listed below:

Mol	Chain	Res	Type
1	A	305	GLU
1	A	131	PRO

### 5.3.2 Protein sidechains [i](#)

In the following table, the Percentiles column shows the percent sidechain outliers of the chain as a percentile score with respect to all X-ray entries followed by that with respect to entries of similar resolution.

The Analysed column shows the number of residues for which the sidechain conformation was analysed, and the total number of residues.

Mol	Chain	Analysed	Rotameric	Outliers	Percentiles
1	A	401/437 (92%)	389 (97%)	12 (3%)	41 72

All (12) residues with a non-rotameric sidechain are listed below:

Mol	Chain	Res	Type
1	A	89	VAL
1	A	124	LEU
1	A	140	THR
1	A	277	LYS
1	A	299	ASP
1	A	309	ILE
1	A	313	THR
1	A	319	ILE
1	A	355	VAL

*Continued on next page...*

*Continued from previous page...*

Mol	Chain	Res	Type
1	A	368	ARG
1	A	445	ASN
1	A	485	THR

Sometimes sidechains can be flipped to improve hydrogen bonding and reduce clashes. All (5) such sidechains are listed below:

Mol	Chain	Res	Type
1	A	45	GLN
1	A	219	GLN
1	A	254	ASN
1	A	386	HIS
1	A	445	ASN

### 5.3.3 RNA [i](#)

There are no RNA molecules in this entry.

## 5.4 Non-standard residues in protein, DNA, RNA chains [i](#)

There are no non-standard protein/DNA/RNA residues in this entry.

## 5.5 Carbohydrates [i](#)

There are no monosaccharides in this entry.

## 5.6 Ligand geometry [i](#)

2 ligands are modelled in this entry.

In the following table, the Counts columns list the number of bonds (or angles) for which Mogul statistics could be retrieved, the number of bonds (or angles) that are observed in the model and the number of bonds (or angles) that are defined in the Chemical Component Dictionary. The Link column lists molecule types, if any, to which the group is linked. The Z score for a bond length (or angle) is the number of standard deviations the observed value is removed from the expected value. A bond length (or angle) with  $|Z| > 2$  is considered an outlier worth inspection. RMSZ is the root-mean-square of all Z scores of the bond lengths (or angles).

Mol	Type	Chain	Res	Link	Bond lengths			Bond angles		
					Counts	RMSZ	$\# Z  > 2$	Counts	RMSZ	$\# Z  > 2$
3	HTO	A	506	-	9,9,9	0.18	0	10,10,10	0.81	0

Mol	Type	Chain	Res	Link	Bond lengths			Bond angles		
					Counts	RMSZ	# Z  > 2	Counts	RMSZ	# Z  > 2
2	CFH	A	505	-	9,9,9	0.48	0	15,15,15	0.85	0

In the following table, the Chirals column lists the number of chiral outliers, the number of chiral centers analysed, the number of these observed in the model and the number defined in the Chemical Component Dictionary. Similar counts are reported in the Torsion and Rings columns. '-' means no outliers of that kind were identified.

Mol	Type	Chain	Res	Link	Chirals	Torsions	Rings
3	HTO	A	506	-	-	2/10/10/10	-
2	CFH	A	505	-	-	0/12/12/12	-

There are no bond length outliers.

There are no bond angle outliers.

There are no chirality outliers.

All (2) torsion outliers are listed below:

Mol	Chain	Res	Type	Atoms
3	A	506	HTO	O1-C1-C2-O2
3	A	506	HTO	O1-C1-C2-C3

There are no ring outliers.

1 monomer is involved in 3 short contacts:

Mol	Chain	Res	Type	Clashes	Symm-Clashes
3	A	506	HTO	3	0

## 5.7 Other polymers [i](#)

There are no such residues in this entry.

## 5.8 Polymer linkage issues [i](#)

There are no chain breaks in this entry.



## 6 Fit of model and data

### 6.1 Protein, DNA and RNA chains

In the following table, the column labelled ‘#RSRZ> 2’ contains the number (and percentage) of RSRZ outliers, followed by percent RSRZ outliers for the chain as percentile scores relative to all X-ray entries and entries of similar resolution. The OWAB column contains the minimum, median, 95<sup>th</sup> percentile and maximum values of the occupancy-weighted average B-factor per residue. The column labelled ‘Q< 0.9’ lists the number of (and percentage) of residues with an average occupancy less than 0.9.

Mol	Chain	Analysed	<RSRZ>	#RSRZ>2	OWAB(Å <sup>2</sup> )	Q<0.9
1	A	466/508 (91%)	0.46	37 (7%) <b>12</b> <b>9</b>	56, 124, 211, 263	0

All (37) RSRZ outliers are listed below:

Mol	Chain	Res	Type	RSRZ
1	A	133	LEU	5.8
1	A	165	TYR	5.5
1	A	54	TYR	5.0
1	A	174	ALA	4.4
1	A	172	THR	3.9
1	A	173	GLN	3.9
1	A	305	GLU	3.6
1	A	37	PHE	3.3
1	A	168	GLU	3.3
1	A	350	LYS	3.3
1	A	284	SER	3.2
1	A	348	TYR	3.1
1	A	306	TYR	3.0
1	A	499	GLU	3.0
1	A	251	LEU	3.0
1	A	145	PRO	2.8
1	A	255	GLY	2.7
1	A	135	ASN	2.6
1	A	313	THR	2.6
1	A	253	ARG	2.6
1	A	322	GLY	2.5
1	A	158	LEU	2.5
1	A	417	GLU	2.5
1	A	289	ALA	2.4
1	A	298	VAL	2.4
1	A	93	LYS	2.4
1	A	115	THR	2.3

*Continued on next page...*

*Continued from previous page...*

Mol	Chain	Res	Type	RSRZ
1	A	323	ASP	2.3
1	A	309	ILE	2.3
1	A	139	HIS	2.2
1	A	197	PHE	2.2
1	A	463	TRP	2.2
1	A	171	ASN	2.2
1	A	110	LEU	2.2
1	A	68	GLY	2.1
1	A	351	LEU	2.1
1	A	241	LEU	2.0

## 6.2 Non-standard residues in protein, DNA, RNA chains [i](#)

There are no non-standard protein/DNA/RNA residues in this entry.

## 6.3 Carbohydrates [i](#)

There are no monosaccharides in this entry.

## 6.4 Ligands [i](#)

In the following table, the Atoms column lists the number of modelled atoms in the group and the number defined in the chemical component dictionary. The B-factors column lists the minimum, median, 95<sup>th</sup> percentile and maximum values of B factors of atoms in the group. The column labelled 'Q< 0.9' lists the number of atoms with occupancy less than 0.9.

Mol	Type	Chain	Res	Atoms	RSCC	RSR	B-factors(Å <sup>2</sup> )	Q<0.9
3	HTO	A	506	10/10	0.73	0.25	80,136,151,152	0
2	CFH	A	505	10/10	0.89	0.28	141,157,175,181	0

## 6.5 Other polymers [i](#)

There are no such residues in this entry.