



wwPDB X-ray Structure Validation Summary Report ⓘ

Sep 20, 2023 – 11:33 AM EDT

PDB ID : 5HXU
Title : Structure-function analysis of functionally diverse members of the cyclic amide hydrolase family of Toblerone fold enzymes
Authors : Peat, T.S.; Balotra, S.; Wilding, M.; Newman, J.; Scott, C.
Deposited on : 2016-01-31
Resolution : 1.83 Å(reported)

This is a wwPDB X-ray Structure Validation Summary Report for a publicly released PDB entry.

We welcome your comments at validation@mail.wwpdb.org

A user guide is available at

<https://www.wwpdb.org/validation/2017/XrayValidationReportHelp>

with specific help available everywhere you see the ⓘ symbol.

The types of validation reports are described at

<http://www.wwpdb.org/validation/2017/FAQs#types>.

The following versions of software and data (see [references ⓘ](#)) were used in the production of this report:

MolProbity : 4.02b-467
Mogul : 1.8.5 (274361), CSD as541be (2020)
Xtriage (Phenix) : 1.13
EDS : 2.35.1
Percentile statistics : 20191225.v01 (using entries in the PDB archive December 25th 2019)
Refmac : 5.8.0158
CCP4 : 7.0.044 (Gargrove)
Ideal geometry (proteins) : Engh & Huber (2001)
Ideal geometry (DNA, RNA) : Parkinson et al. (1996)
Validation Pipeline (wwPDB-VP) : 2.35.1

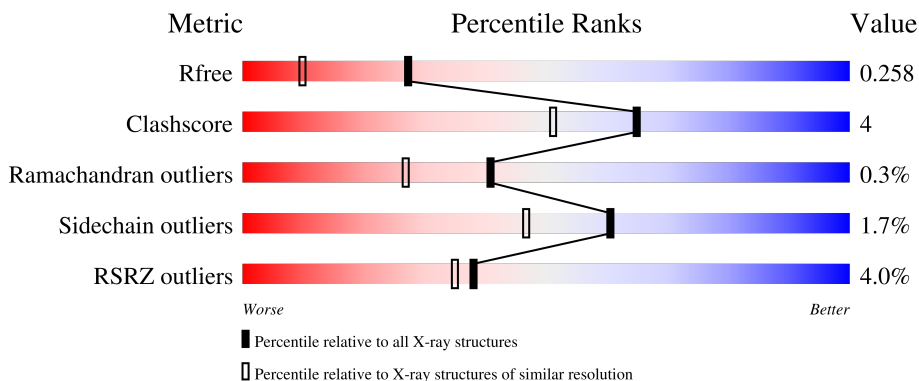
1 Overall quality at a glance

The following experimental techniques were used to determine the structure:

X-RAY DIFFRACTION

The reported resolution of this entry is 1.83 Å.

Percentile scores (ranging between 0-100) for global validation metrics of the entry are shown in the following graphic. The table shows the number of entries on which the scores are based.



Metric	Whole archive (#Entries)	Similar resolution (#Entries, resolution range(Å))
R_{free}	130704	4003 (1.86-1.82)
Clashscore	141614	4233 (1.86-1.82)
Ramachandran outliers	138981	4185 (1.86-1.82)
Sidechain outliers	138945	4186 (1.86-1.82)
RSRZ outliers	127900	3957 (1.86-1.82)

The table below summarises the geometric issues observed across the polymeric chains and their fit to the electron density. The red, orange, yellow and green segments of the lower bar indicate the fraction of residues that contain outliers for ≥ 3 , 2, 1 and 0 types of geometric quality criteria respectively. A grey segment represents the fraction of residues that are not modelled. The numeric value for each fraction is indicated below the corresponding segment, with a dot representing fractions $\leq 5\%$. The upper red bar (where present) indicates the fraction of residues that have poor fit to the electron density. The numeric value is given above the bar.

Mol	Chain	Length	Quality of chain
1	A	389	 3% 87% 6% • 6%
1	B	389	 5% 84% 10% • 6%

The following table lists non-polymeric compounds, carbohydrate monomers and non-standard residues in protein, DNA, RNA chains that are outliers for geometric or electron-density-fit criteria:

Mol	Type	Chain	Res	Chirality	Geometry	Clashes	Electron density
3	MHA	B	403	-	X	X	-

2 Entry composition [i](#)

There are 6 unique types of molecules in this entry. The entry contains 6132 atoms, of which 0 are hydrogens and 0 are deuteriums.

In the tables below, the ZeroOcc column contains the number of atoms modelled with zero occupancy, the AltConf column contains the number of residues with at least one atom in alternate conformation and the Trace column contains the number of residues modelled with at most 2 atoms.

- Molecule 1 is a protein called Barbiturase.

Mol	Chain	Residues	Atoms					ZeroOcc	AltConf	Trace
			Total	C	N	O	S			
1	A	367	2739	1690	490	547	12	0	3	0
1	B	367	2731	1686	488	546	11	0	2	0

There are 42 discrepancies between the modelled and reference sequences:

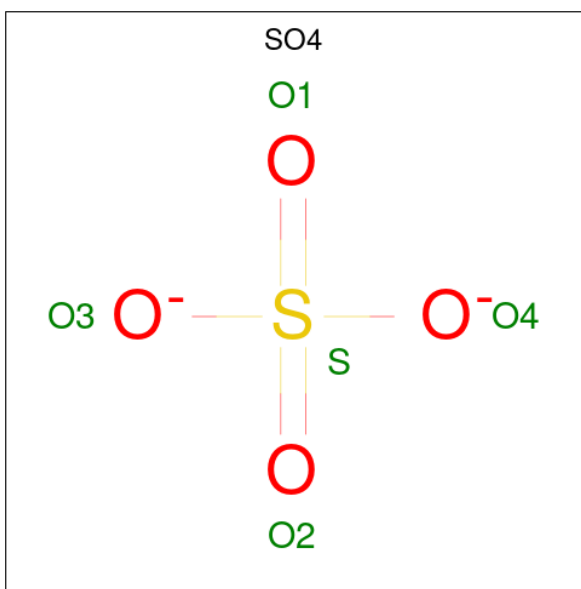
Chain	Residue	Modelled	Actual	Comment	Reference
A	-19	MET	-	initiating methionine	UNP Q8RSQ2
A	-18	GLY	-	expression tag	UNP Q8RSQ2
A	-17	SER	-	expression tag	UNP Q8RSQ2
A	-16	SER	-	expression tag	UNP Q8RSQ2
A	-15	HIS	-	expression tag	UNP Q8RSQ2
A	-14	HIS	-	expression tag	UNP Q8RSQ2
A	-13	HIS	-	expression tag	UNP Q8RSQ2
A	-12	HIS	-	expression tag	UNP Q8RSQ2
A	-11	HIS	-	expression tag	UNP Q8RSQ2
A	-10	HIS	-	expression tag	UNP Q8RSQ2
A	-9	SER	-	expression tag	UNP Q8RSQ2
A	-8	SER	-	expression tag	UNP Q8RSQ2
A	-7	GLY	-	expression tag	UNP Q8RSQ2
A	-6	LEU	-	expression tag	UNP Q8RSQ2
A	-5	VAL	-	expression tag	UNP Q8RSQ2
A	-4	PRO	-	expression tag	UNP Q8RSQ2
A	-3	ARG	-	expression tag	UNP Q8RSQ2
A	-2	GLY	-	expression tag	UNP Q8RSQ2
A	-1	SER	-	expression tag	UNP Q8RSQ2
A	0	HIS	-	expression tag	UNP Q8RSQ2
A	287	SER	ASN	conflict	UNP Q8RSQ2
B	-19	MET	-	initiating methionine	UNP Q8RSQ2
B	-18	GLY	-	expression tag	UNP Q8RSQ2
B	-17	SER	-	expression tag	UNP Q8RSQ2
B	-16	SER	-	expression tag	UNP Q8RSQ2

Continued on next page...

Continued from previous page...

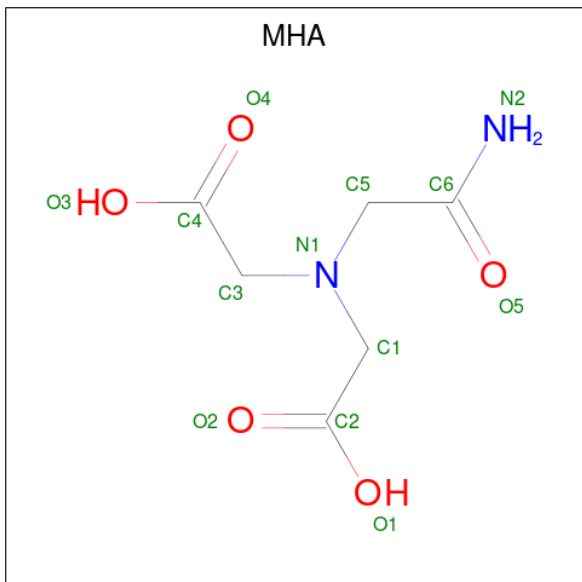
Chain	Residue	Modelled	Actual	Comment	Reference
B	-15	HIS	-	expression tag	UNP Q8RSQ2
B	-14	HIS	-	expression tag	UNP Q8RSQ2
B	-13	HIS	-	expression tag	UNP Q8RSQ2
B	-12	HIS	-	expression tag	UNP Q8RSQ2
B	-11	HIS	-	expression tag	UNP Q8RSQ2
B	-10	HIS	-	expression tag	UNP Q8RSQ2
B	-9	SER	-	expression tag	UNP Q8RSQ2
B	-8	SER	-	expression tag	UNP Q8RSQ2
B	-7	GLY	-	expression tag	UNP Q8RSQ2
B	-6	LEU	-	expression tag	UNP Q8RSQ2
B	-5	VAL	-	expression tag	UNP Q8RSQ2
B	-4	PRO	-	expression tag	UNP Q8RSQ2
B	-3	ARG	-	expression tag	UNP Q8RSQ2
B	-2	GLY	-	expression tag	UNP Q8RSQ2
B	-1	SER	-	expression tag	UNP Q8RSQ2
B	0	HIS	-	expression tag	UNP Q8RSQ2
B	287	SER	ASN	conflict	UNP Q8RSQ2

- Molecule 2 is SULFATE ION (three-letter code: SO₄) (formula: O₄S).



Mol	Chain	Residues	Atoms	ZeroOcc	AltConf		
2	A	1	Total	O	S	0	0
			5	4	1		
2	B	1	Total	O	S	0	0
			5	4	1		
2	B	1	Total	O	S	0	0
			5	4	1		

- Molecule 3 is (CARBAMOYLMETHYL-CARBOXYMETHYL-AMINO)-ACETIC ACID (three-letter code: MHA) (formula: C₆H₁₀N₂O₅).



Mol	Chain	Residues	Atoms				ZeroOcc	AltConf
			Total	C	N	O		
3	A	1	13	6	2	5	0	0
3	B	1	13	6	2	5	0	0

- Molecule 4 is SODIUM ION (three-letter code: NA) (formula: Na).

Mol	Chain	Residues	Atoms		ZeroOcc	AltConf
			Total	Na		
4	A	1	1	1	0	0
4	B	1	1	1	0	0

- Molecule 5 is CHLORIDE ION (three-letter code: CL) (formula: Cl).

Mol	Chain	Residues	Atoms		ZeroOcc	AltConf
			Total	Cl		
5	A	1	1	1	0	0
5	B	1	1	1	0	0


- Molecule 6 is water.

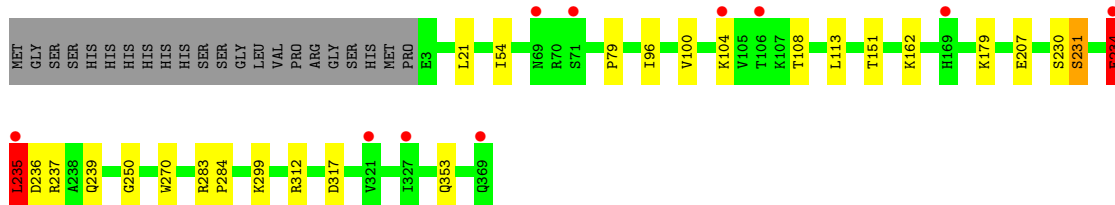
Mol	Chain	Residues	Atoms		ZeroOcc	AltConf
6	A	365	Total 365	O 365	0	0
6	B	252	Total 252	O 252	0	0

3 Residue-property plots [i](#)


These plots are drawn for all protein, RNA, DNA and oligosaccharide chains in the entry. The first graphic for a chain summarises the proportions of the various outlier classes displayed in the second graphic. The second graphic shows the sequence view annotated by issues in geometry and electron density. Residues are color-coded according to the number of geometric quality criteria for which they contain at least one outlier: green = 0, yellow = 1, orange = 2 and red = 3 or more. A red dot above a residue indicates a poor fit to the electron density ($RSRZ > 2$). Stretches of 2 or more consecutive residues without any outlier are shown as a green connector. Residues present in the sample, but not in the model, are shown in grey.

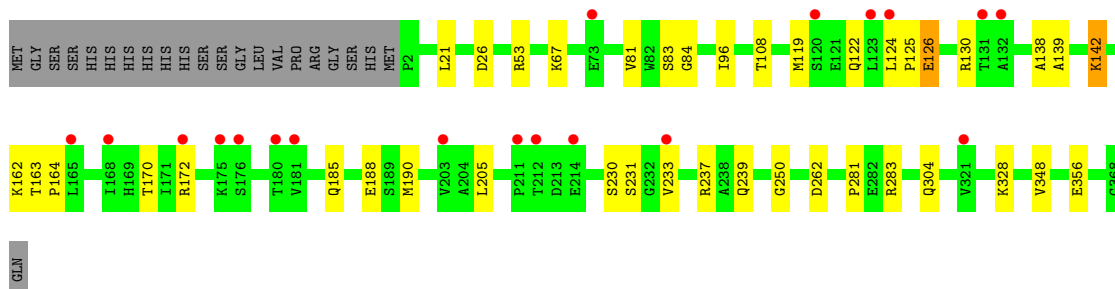
- Molecule 1: Barbiturase

Chain A: 



- Molecule 1: Barbiturase

Chain B: 



4 Data and refinement statistics

Property	Value	Source
Space group	P 41 21 2	Depositor
Cell constants a, b, c, α , β , γ	83.42Å 83.42Å 216.23Å 90.00° 90.00° 90.00°	Depositor
Resolution (Å)	41.50 – 1.83 40.95 – 1.83	Depositor EDS
% Data completeness (in resolution range)	96.0 (41.50-1.83) 96.0 (40.95-1.83)	Depositor EDS
R_{merge}	(Not available)	Depositor
R_{sym}	(Not available)	Depositor
$\langle I/\sigma(I) \rangle$ ¹	3.26 (at 1.83Å)	Xtrriage
Refinement program	REFMAC 5.8.0135	Depositor
R, R_{free}	0.211 , 0.252 0.220 , 0.258	Depositor DCC
R_{free} test set	3218 reflections (4.91%)	wwPDB-VP
Wilson B-factor (Å ²)	16.5	Xtrriage
Anisotropy	0.136	Xtrriage
Bulk solvent k_{sol} (e/Å ³), B_{sol} (Å ²)	0.35 , 42.8	EDS
L-test for twinning ²	$\langle L \rangle = 0.46$, $\langle L^2 \rangle = 0.29$	Xtrriage
Estimated twinning fraction	No twinning to report.	Xtrriage
F_o, F_c correlation	0.91	EDS
Total number of atoms	6132	wwPDB-VP
Average B, all atoms (Å ²)	25.0	wwPDB-VP

Xtrriage's analysis on translational NCS is as follows: *The largest off-origin peak in the Patterson function is 3.51% of the height of the origin peak. No significant pseudotranslation is detected.*

¹Intensities estimated from amplitudes.

²Theoretical values of $\langle |L| \rangle$, $\langle L^2 \rangle$ for acentric reflections are 0.5, 0.333 respectively for untwinned datasets, and 0.375, 0.2 for perfectly twinned datasets.

5 Model quality [i](#)

5.1 Standard geometry [i](#)

Bond lengths and bond angles in the following residue types are not validated in this section: SO4, MHA, NA, CL

The Z score for a bond length (or angle) is the number of standard deviations the observed value is removed from the expected value. A bond length (or angle) with $|Z| > 5$ is considered an outlier worth inspection. RMSZ is the root-mean-square of all Z scores of the bond lengths (or angles).

Mol	Chain	Bond lengths		Bond angles	
		RMSZ	# $ Z > 5$	RMSZ	# $ Z > 5$
1	A	0.90	2/2781 (0.1%)	0.88	5/3779 (0.1%)
1	B	0.81	0/2774	0.90	4/3771 (0.1%)
All	All	0.86	2/5555 (0.0%)	0.89	9/7550 (0.1%)

All (2) bond length outliers are listed below:

Mol	Chain	Res	Type	Atoms	Z	Observed(Å)	Ideal(Å)
1	A	231	SER	CB-OG	-5.70	1.34	1.42
1	A	207	GLU	CD-OE1	5.55	1.31	1.25

The worst 5 of 9 bond angle outliers are listed below:

Mol	Chain	Res	Type	Atoms	Z	Observed(°)	Ideal(°)
1	A	235	LEU	CB-CG-CD1	7.43	123.64	111.00
1	A	312	ARG	NE-CZ-NH1	6.38	123.49	120.30
1	A	54	ILE	CB-CA-C	-6.19	99.23	111.60
1	B	130	ARG	NE-CZ-NH2	5.92	123.26	120.30
1	B	262	ASP	CB-CG-OD1	5.61	123.35	118.30

There are no chirality outliers.

There are no planarity outliers.

5.2 Too-close contacts [i](#)

In the following table, the Non-H and H(model) columns list the number of non-hydrogen atoms and hydrogen atoms in the chain respectively. The H(added) column lists the number of hydrogen atoms added and optimized by MolProbity. The Clashes column lists the number of clashes within the asymmetric unit, whereas Symm-Clashes lists symmetry-related clashes.

Mol	Chain	Non-H	H(model)	H(added)	Clashes	Symm-Clashes
1	A	2739	0	2713	12	0
1	B	2731	0	2704	33	0
2	A	5	0	0	0	0
2	B	10	0	0	0	0
3	A	13	0	8	0	0
3	B	13	0	8	15	0
4	A	1	0	0	0	0
4	B	1	0	0	0	0
5	A	1	0	0	0	0
5	B	1	0	0	0	0
6	A	365	0	0	1	0
6	B	252	0	0	2	0
All	All	6132	0	5433	45	0

The all-atom clashscore is defined as the number of clashes found per 1000 atoms (including hydrogen atoms). The all-atom clashscore for this structure is 4.

The worst 5 of 45 close contacts within the same asymmetric unit are listed below, sorted by their clash magnitude.

Atom-1	Atom-2	Interatomic distance (Å)	Clash overlap (Å)
1:B:53:ARG:NH1	3:B:403:MHA:O1	1.71	1.24
1:B:328:LYS:NZ	3:B:403:MHA:O4	1.91	1.03
1:B:348:VAL:N	3:B:403:MHA:O3	2.09	0.83
1:B:190:MET:HG3	3:B:403:MHA:N2	1.98	0.78
1:A:235:LEU:HD12	1:A:236:ASP:H	1.58	0.68

There are no symmetry-related clashes.

5.3 Torsion angles [i](#)

5.3.1 Protein backbone [i](#)

In the following table, the Percentiles column shows the percent Ramachandran outliers of the chain as a percentile score with respect to all X-ray entries followed by that with respect to entries of similar resolution.

The Analysed column shows the number of residues for which the backbone conformation was analysed, and the total number of residues.

Mol	Chain	Analysed	Favoured	Allowed	Outliers	Percentiles
1	A	368/389 (95%)	361 (98%)	6 (2%)	1 (0%)	41 27

Continued on next page...

Continued from previous page...

Mol	Chain	Analysed	Favoured	Allowed	Outliers	Percentiles	
1	B	367/389 (94%)	358 (98%)	8 (2%)	1 (0%)	41	27
All	All	735/778 (94%)	719 (98%)	14 (2%)	2 (0%)	41	27

All (2) Ramachandran outliers are listed below:

Mol	Chain	Res	Type
1	A	234	GLU
1	B	126	GLU

5.3.2 Protein sidechains [i](#)

In the following table, the Percentiles column shows the percent sidechain outliers of the chain as a percentile score with respect to all X-ray entries followed by that with respect to entries of similar resolution.

The Analysed column shows the number of residues for which the sidechain conformation was analysed, and the total number of residues.

Mol	Chain	Analysed	Rotameric	Outliers	Percentiles	
1	A	294/310 (95%)	288 (98%)	6 (2%)	55	40
1	B	293/310 (94%)	289 (99%)	4 (1%)	67	55
All	All	587/620 (95%)	577 (98%)	10 (2%)	60	47

5 of 10 residues with a non-rotameric sidechain are listed below:

Mol	Chain	Res	Type
1	B	142	LYS
1	B	172	ARG
1	B	281	PRO
1	A	234	GLU
1	A	235	LEU

Sometimes sidechains can be flipped to improve hydrogen bonding and reduce clashes. All (1) such sidechains are listed below:

Mol	Chain	Res	Type
1	B	122	GLN

5.3.3 RNA [i](#)

There are no RNA molecules in this entry.

5.4 Non-standard residues in protein, DNA, RNA chains [i](#)

There are no non-standard protein/DNA/RNA residues in this entry.

5.5 Carbohydrates [i](#)

There are no monosaccharides in this entry.

5.6 Ligand geometry [i](#)

Of 9 ligands modelled in this entry, 4 are monoatomic - leaving 5 for Mogul analysis.

In the following table, the Counts columns list the number of bonds (or angles) for which Mogul statistics could be retrieved, the number of bonds (or angles) that are observed in the model and the number of bonds (or angles) that are defined in the Chemical Component Dictionary. The Link column lists molecule types, if any, to which the group is linked. The Z score for a bond length (or angle) is the number of standard deviations the observed value is removed from the expected value. A bond length (or angle) with $|Z| > 2$ is considered an outlier worth inspection. RMSZ is the root-mean-square of all Z scores of the bond lengths (or angles).

Mol	Type	Chain	Res	Link	Bond lengths			Bond angles		
					Counts	RMSZ	# Z > 2	Counts	RMSZ	# Z > 2
2	SO4	A	401	-	4,4,4	0.61	0	6,6,6	0.80	0
3	MHA	A	402	-	12,12,12	1.71	3 (25%)	15,15,15	1.62	2 (13%)
2	SO4	B	401	-	4,4,4	0.53	0	6,6,6	0.86	0
3	MHA	B	403	-	12,12,12	1.96	5 (41%)	15,15,15	3.09	8 (53%)
2	SO4	B	402	-	4,4,4	0.41	0	6,6,6	0.35	0

In the following table, the Chirals column lists the number of chiral outliers, the number of chiral centers analysed, the number of these observed in the model and the number defined in the Chemical Component Dictionary. Similar counts are reported in the Torsion and Rings columns. '-' means no outliers of that kind were identified.

Mol	Type	Chain	Res	Link	Chirals	Torsions	Rings
3	MHA	A	402	-	-	0/12/12/12	-
3	MHA	B	403	-	-	7/12/12/12	-

The worst 5 of 8 bond length outliers are listed below:

Mol	Chain	Res	Type	Atoms	Z	Observed(Å)	Ideal(Å)
3	B	403	MHA	O3-C4	-4.22	1.16	1.30
3	A	402	MHA	C5-C6	2.77	1.55	1.52
3	A	402	MHA	C3-N1	2.73	1.52	1.47
3	B	403	MHA	C1-C2	-2.66	1.46	1.51
3	A	402	MHA	O1-C2	-2.37	1.22	1.30

The worst 5 of 10 bond angle outliers are listed below:

Mol	Chain	Res	Type	Atoms	Z	Observed(°)	Ideal(°)
3	B	403	MHA	C6-C5-N1	-6.44	103.20	114.38
3	B	403	MHA	C5-C6-N2	4.80	123.44	115.86
3	A	402	MHA	C6-C5-N1	-4.31	106.89	114.38
3	B	403	MHA	O1-C2-C1	3.81	128.47	113.45
3	B	403	MHA	O3-C4-O4	-3.81	113.80	123.30

There are no chirality outliers.

5 of 7 torsion outliers are listed below:

Mol	Chain	Res	Type	Atoms
3	B	403	MHA	N1-C1-C2-O2
3	B	403	MHA	N1-C3-C4-O3
3	B	403	MHA	N1-C3-C4-O4
3	B	403	MHA	N1-C1-C2-O1
3	B	403	MHA	C2-C1-N1-C3

There are no ring outliers.

1 monomer is involved in 15 short contacts:

Mol	Chain	Res	Type	Clashes	Symm-Clashes
3	B	403	MHA	15	0

5.7 Other polymers [i](#)

There are no such residues in this entry.

5.8 Polymer linkage issues [i](#)

There are no chain breaks in this entry.

6 Fit of model and data [i](#)

6.1 Protein, DNA and RNA chains [i](#)

In the following table, the column labelled ‘#RSRZ > 2’ contains the number (and percentage) of RSRZ outliers, followed by percent RSRZ outliers for the chain as percentile scores relative to all X-ray entries and entries of similar resolution. The OWAB column contains the minimum, median, 95th percentile and maximum values of the occupancy-weighted average B-factor per residue. The column labelled ‘Q < 0.9’ lists the number of (and percentage) of residues with an average occupancy less than 0.9.

Mol	Chain	Analysed	<RSRZ>	#RSRZ>2	OWAB(Å ²)	Q<0.9
1	A	367/389 (94%)	-0.11	10 (2%) 54 52	12, 18, 44, 67	0
1	B	367/389 (94%)	0.33	19 (5%) 27 24	11, 25, 49, 67	0
All	All	734/778 (94%)	0.11	29 (3%) 38 35	11, 21, 47, 67	0

The worst 5 of 29 RSRZ outliers are listed below:

Mol	Chain	Res	Type	RSRZ
1	B	132	ALA	6.0
1	B	176	SER	5.2
1	B	123	LEU	5.0
1	B	124	LEU	4.4
1	B	180	THR	4.0

6.2 Non-standard residues in protein, DNA, RNA chains [i](#)

There are no non-standard protein/DNA/RNA residues in this entry.

6.3 Carbohydrates [i](#)

There are no monosaccharides in this entry.

6.4 Ligands [i](#)

In the following table, the Atoms column lists the number of modelled atoms in the group and the number defined in the chemical component dictionary. The B-factors column lists the minimum, median, 95th percentile and maximum values of B factors of atoms in the group. The column labelled ‘Q < 0.9’ lists the number of atoms with occupancy less than 0.9.

Mol	Type	Chain	Res	Atoms	RSCC	RSR	B-factors(\AA^2)	Q<0.9
2	SO4	B	402	5/5	0.84	0.26	26,34,45,45	5
3	MHA	B	403	13/13	0.84	0.19	26,33,43,46	0
5	CL	A	404	1/1	0.86	0.05	53,53,53,53	0
2	SO4	A	401	5/5	0.89	0.23	43,47,60,67	0
2	SO4	B	401	5/5	0.93	0.15	41,47,60,60	0
3	MHA	A	402	13/13	0.93	0.11	12,20,27,35	0
4	NA	B	404	1/1	0.96	0.15	34,34,34,34	0
5	CL	B	405	1/1	0.96	0.04	48,48,48,48	0
4	NA	A	403	1/1	1.00	0.07	24,24,24,24	0

6.5 Other polymers [i](#)

There are no such residues in this entry.