



# Full wwPDB X-ray Structure Validation Report ⓘ

Oct 17, 2021 – 02:51 AM EDT

PDB ID : 1HYV  
Title : HIV INTEGRASE CORE DOMAIN COMPLEXED WITH TETRAPHENYL ARSONIUM  
Authors : Molteni, V.; Greenwald, J.; Rhodes, D.; Hwang, Y.; Kwiatkowski, W.; Bushman, F.D.; Siegel, J.S.; Choe, S.  
Deposited on : 2001-01-22  
Resolution : 1.70 Å(reported)

This is a Full wwPDB X-ray Structure Validation Report for a publicly released PDB entry.

We welcome your comments at [validation@mail.wwpdb.org](mailto:validation@mail.wwpdb.org)

A user guide is available at

<https://www.wwpdb.org/validation/2017/XrayValidationReportHelp>

with specific help available everywhere you see the ⓘ symbol.

---

The following versions of software and data (see [references ⓘ](#)) were used in the production of this report:

MolProbity : 4.02b-467  
Mogul : 1.8.5 (274361), CSD as541be (2020)  
Xtriage (Phenix) : 1.13  
EDS : 2.23.2  
buster-report : 1.1.7 (2018)  
Percentile statistics : 20191225.v01 (using entries in the PDB archive December 25th 2019)  
Refmac : 5.8.0158  
CCP4 : 7.0.044 (Gargrove)  
Ideal geometry (proteins) : Engh & Huber (2001)  
Ideal geometry (DNA, RNA) : Parkinson et al. (1996)  
Validation Pipeline (wwPDB-VP) : 2.23.2

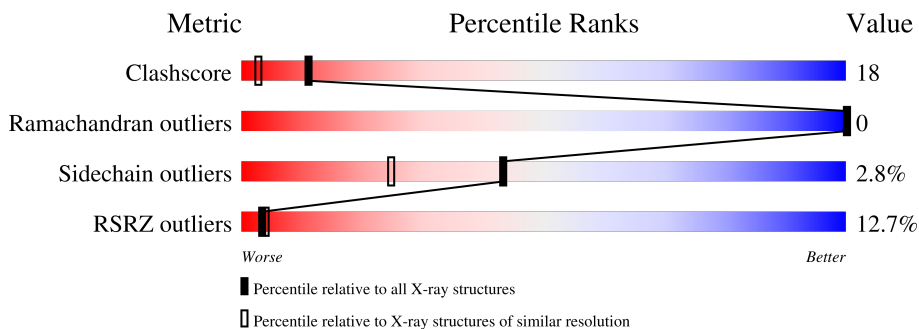
# 1 Overall quality at a glance

The following experimental techniques were used to determine the structure:

*X-RAY DIFFRACTION*

The reported resolution of this entry is 1.70 Å.

Percentile scores (ranging between 0-100) for global validation metrics of the entry are shown in the following graphic. The table shows the number of entries on which the scores are based.



Metric	Whole archive (#Entries)	Similar resolution (#Entries, resolution range(Å))
Clashscore	141614	4695 (1.70-1.70)
Ramachandran outliers	138981	4610 (1.70-1.70)
Sidechain outliers	138945	4610 (1.70-1.70)
RSRZ outliers	127900	4222 (1.70-1.70)

The table below summarises the geometric issues observed across the polymeric chains and their fit to the electron density. The red, orange, yellow and green segments of the lower bar indicate the fraction of residues that contain outliers for  $\geq 3$ , 2, 1 and 0 types of geometric quality criteria respectively. A grey segment represents the fraction of residues that are not modelled. The numeric value for each fraction is indicated below the corresponding segment, with a dot representing fractions  $\leq 5\%$ . The upper red bar (where present) indicates the fraction of residues that have poor fit to the electron density. The numeric value is given above the bar.

Mol	Chain	Length	Quality of chain
1	A	166	

The following table lists non-polymeric compounds, carbohydrate monomers and non-standard residues in protein, DNA, RNA chains that are outliers for geometric or electron-density-fit criteria:

Mol	Type	Chain	Res	Chirality	Geometry	Clashes	Electron density
4	TTA	A	304	-	-	X	-

## 2 Entry composition [i](#)

There are 5 unique types of molecules in this entry. The entry contains 1249 atoms, of which 0 are hydrogens and 0 are deuteriums.

In the tables below, the ZeroOcc column contains the number of atoms modelled with zero occupancy, the AltConf column contains the number of residues with at least one atom in alternate conformation and the Trace column contains the number of residues modelled with at most 2 atoms.

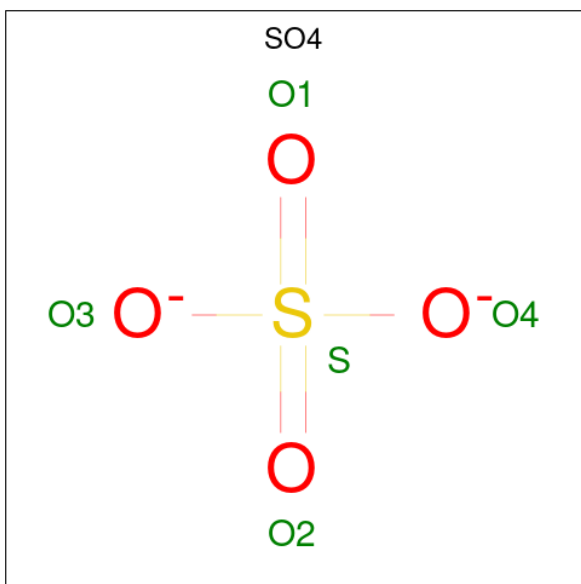
- Molecule 1 is a protein called INTEGRASE.

Mol	Chain	Residues	Atoms					ZeroOcc	AltConf	Trace	
			Total	As	C	N	O				S
1	A	144	1120	2	714	194	206	4	0	2	0

There are 6 discrepancies between the modelled and reference sequences:

Chain	Residue	Modelled	Actual	Comment	Reference
A	47	GLY	-	SEE REMARK 999	UNP Q76353
A	48	SER	-	SEE REMARK 999	UNP Q76353
A	49	HIS	-	SEE REMARK 999	UNP Q76353
A	65	CAF	CYS	modified residue	UNP Q76353
A	130	CAF	CYS	modified residue	UNP Q76353
A	185	LYS	PHE	engineered mutation	UNP Q76353

- Molecule 2 is SULFATE ION (three-letter code: SO4) (formula: O<sub>4</sub>S).

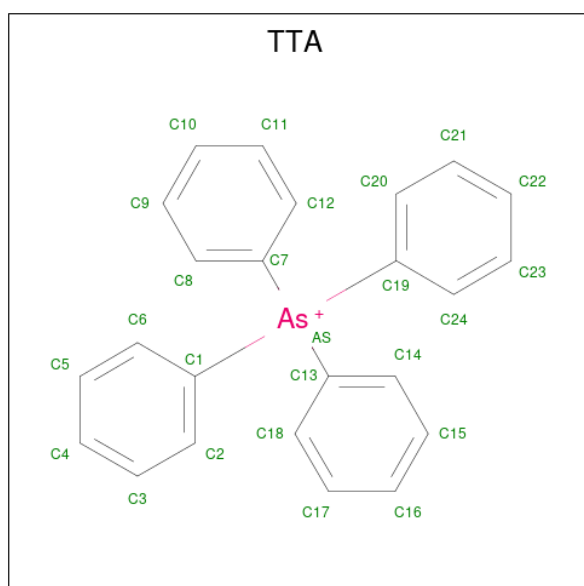


Mol	Chain	Residues	Atoms	ZeroOcc	AltConf
2	A	1	Total O S 5 4 1	0	0

- Molecule 3 is CHLORIDE ION (three-letter code: CL) (formula: Cl).

Mol	Chain	Residues	Atoms	ZeroOcc	AltConf
3	A	1	Total Cl 1 1	0	0

- Molecule 4 is TETRAPHENYL-ARSONIUM (three-letter code: TTA) (formula: C<sub>24</sub>H<sub>20</sub>As).



Mol	Chain	Residues	Atoms	ZeroOcc	AltConf
4	A	1	Total As C 25 1 24	0	0

- Molecule 5 is water.

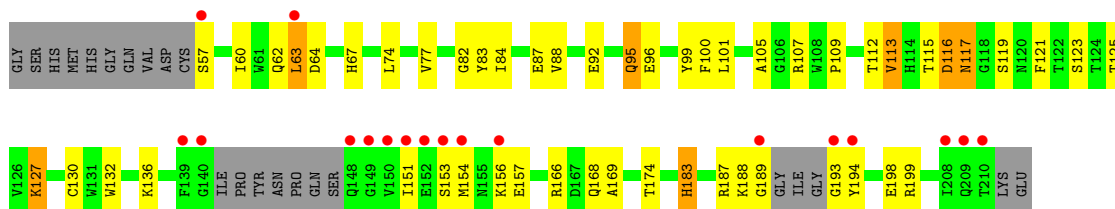
Mol	Chain	Residues	Atoms	ZeroOcc	AltConf
5	A	98	Total O 98 98	0	0

### 3 Residue-property plots [i](#)

These plots are drawn for all protein, RNA, DNA and oligosaccharide chains in the entry. The first graphic for a chain summarises the proportions of the various outlier classes displayed in the second graphic. The second graphic shows the sequence view annotated by issues in geometry and electron density. Residues are color-coded according to the number of geometric quality criteria for which they contain at least one outlier: green = 0, yellow = 1, orange = 2 and red = 3 or more. A red dot above a residue indicates a poor fit to the electron density ( $RSRZ > 2$ ). Stretches of 2 or more consecutive residues without any outlier are shown as a green connector. Residues present in the sample, but not in the model, are shown in grey.

- Molecule 1: INTEGRASE

Chain A: 



## 4 Data and refinement statistics i

Property	Value	Source
Space group	P 31 2 1	Depositor
Cell constants a, b, c, $\alpha$ , $\beta$ , $\gamma$	72.01Å 72.01Å 65.60Å 90.00° 90.00° 120.00°	Depositor
Resolution (Å)	50.00 – 1.70 19.14 – 1.70	Depositor EDS
% Data completeness (in resolution range)	(Not available) (50.00-1.70) 95.1 (19.14-1.70)	Depositor EDS
$R_{merge}$	0.03	Depositor
$R_{sym}$	(Not available)	Depositor
$\langle I/\sigma(I) \rangle$ <sup>1</sup>	3.32 (at 1.70Å)	Xtrriage
Refinement program	REFMAC	Depositor
R, $R_{free}$	0.221 , 0.263 0.217 , (Not available)	Depositor DCC
$R_{free}$ test set	No test flags present.	wwPDB-VP
Wilson B-factor (Å <sup>2</sup> )	24.7	Xtrriage
Anisotropy	0.233	Xtrriage
Bulk solvent $k_{sol}$ (e/Å <sup>3</sup> ), $B_{sol}$ (Å <sup>2</sup> )	0.38 , 65.0	EDS
L-test for twinning <sup>2</sup>	$\langle  L  \rangle = 0.50$ , $\langle L^2 \rangle = 0.33$	Xtrriage
Estimated twinning fraction	0.024 for -h,-k,l	Xtrriage
$F_o, F_c$ correlation	0.95	EDS
Total number of atoms	1249	wwPDB-VP
Average B, all atoms (Å <sup>2</sup> )	35.0	wwPDB-VP

Xtrriage's analysis on translational NCS is as follows: *The largest off-origin peak in the Patterson function is 4.93% of the height of the origin peak. No significant pseudotranslation is detected.*

<sup>1</sup>Intensities estimated from amplitudes.

<sup>2</sup>Theoretical values of  $\langle |L| \rangle$ ,  $\langle L^2 \rangle$  for acentric reflections are 0.5, 0.333 respectively for untwinned datasets, and 0.375, 0.2 for perfectly twinned datasets.

## 5 Model quality i

### 5.1 Standard geometry i

Bond lengths and bond angles in the following residue types are not validated in this section: CL, CAF, TTA, SO4

The Z score for a bond length (or angle) is the number of standard deviations the observed value is removed from the expected value. A bond length (or angle) with  $|Z| > 5$  is considered an outlier worth inspection. RMSZ is the root-mean-square of all Z scores of the bond lengths (or angles).

Mol	Chain	Bond lengths		Bond angles	
		RMSZ	# Z  >5	RMSZ	# Z  >5
1	A	0.99	0/1120	1.79	32/1512 (2.1%)

Chiral center outliers are detected by calculating the chiral volume of a chiral center and verifying if the center is modelled as a planar moiety or with the opposite hand. A planarity outlier is detected by checking planarity of atoms in a peptide group, atoms in a mainchain group or atoms of a sidechain that are expected to be planar.

Mol	Chain	#Chirality outliers	#Planarity outliers
1	A	0	2

There are no bond length outliers.

All (32) bond angle outliers are listed below:

Mol	Chain	Res	Type	Atoms	Z	Observed( $^{\circ}$ )	Ideal( $^{\circ}$ )
1	A	115	THR	O-C-N	10.56	139.60	122.70
1	A	99	TYR	CB-CG-CD1	-9.72	115.17	121.00
1	A	166	ARG	NE-CZ-NH1	-9.12	115.74	120.30
1	A	199	ARG	NE-CZ-NH2	-8.38	116.11	120.30
1	A	107	ARG	NE-CZ-NH2	-7.29	116.65	120.30
1	A	100	PHE	CB-CG-CD2	-6.86	116.00	120.80
1	A	99	TYR	CG-CD1-CE1	-6.81	115.85	121.30
1	A	107	ARG	CD-NE-CZ	6.48	132.67	123.60
1	A	116	ASP	CB-CG-OD1	6.46	124.11	118.30
1	A	127	LYS	O-C-N	6.27	132.74	122.70
1	A	121	PHE	CB-CG-CD2	-6.22	116.45	120.80
1	A	87	GLU	CA-CB-CG	6.18	127.00	113.40
1	A	109	PRO	O-C-N	6.15	132.54	122.70
1	A	83	TYR	CB-CG-CD2	-6.11	117.34	121.00
1	A	132	TRP	CB-CG-CD1	-6.05	119.13	127.00
1	A	96	GLU	OE1-CD-OE2	-5.90	116.22	123.30

*Continued on next page...*

Continued from previous page...

Mol	Chain	Res	Type	Atoms	Z	Observed(°)	Ideal(°)
1	A	116	ASP	CB-CG-OD2	-5.85	113.03	118.30
1	A	199	ARG	CD-NE-CZ	5.80	131.72	123.60
1	A	113	VAL	CG1-CB-CG2	-5.77	101.67	110.90
1	A	194	TYR	CB-CG-CD1	-5.60	117.64	121.00
1	A	87	GLU	OE1-CD-OE2	-5.60	116.58	123.30
1	A	95	GLN	CB-CG-CD	5.59	126.13	111.60
1	A	183	HIS	O-C-N	-5.58	113.77	122.70
1	A	101	LEU	O-C-N	5.46	131.44	122.70
1	A	119	SER	O-C-N	5.32	131.22	122.70
1	A	64	ASP	CB-CG-OD2	5.29	123.06	118.30
1	A	99	TYR	CB-CG-CD2	5.21	124.13	121.00
1	A	132	TRP	CG-CD1-NE1	-5.18	104.92	110.10
1	A	199	ARG	NE-CZ-NH1	5.16	122.88	120.30
1	A	88	VAL	N-CA-C	-5.10	97.23	111.00
1	A	105	ALA	C-N-CA	-5.04	111.71	122.30
1	A	115	THR	CA-C-O	-5.04	109.53	120.10

There are no chirality outliers.

All (2) planarity outliers are listed below:

Mol	Chain	Res	Type	Group
1	A	123	SER	Mainchain
1	A	63[B]	LEU	Mainchain

## 5.2 Too-close contacts

In the following table, the Non-H and H(model) columns list the number of non-hydrogen atoms and hydrogen atoms in the chain respectively. The H(added) column lists the number of hydrogen atoms added and optimized by MolProbity. The Clashes column lists the number of clashes within the asymmetric unit, whereas Symm-Clashes lists symmetry-related clashes.

Mol	Chain	Non-H	H(model)	H(added)	Clashes	Symm-Clashes
1	A	1120	0	1103	32	1
2	A	5	0	0	0	0
3	A	1	0	0	0	0
4	A	25	0	20	14	0
5	A	98	0	0	8	3
All	All	1249	0	1123	41	3

The all-atom clashscore is defined as the number of clashes found per 1000 atoms (including hydrogen atoms). The all-atom clashscore for this structure is 18.



All (41) close contacts within the same asymmetric unit are listed below, sorted by their clash magnitude.

Atom-1	Atom-2	Interatomic distance (Å)	Clash overlap (Å)
4:A:304:TTA:C21	5:A:402:HOH:O	1.81	1.26
1:A:63[A]:LEU:HD11	1:A:74:LEU:CD2	1.82	1.10
1:A:63[A]:LEU:CD1	1:A:74:LEU:HD21	1.87	1.03
1:A:63[A]:LEU:HD11	1:A:74:LEU:HD21	0.99	0.96
1:A:169:ALA:HA	4:A:304:TTA:H24	1.54	0.90
1:A:157:GLU:OE1	5:A:387:HOH:O	1.89	0.90
1:A:125[A]:THR:HG23	5:A:357:HOH:O	1.80	0.80
1:A:57:SER:HB3	1:A:60:ILE:HD12	1.66	0.76
1:A:116:ASP:OD2	5:A:367:HOH:O	2.04	0.75
1:A:168:GLN:OE1	4:A:304:TTA:HC3	1.87	0.74
4:A:304:TTA:C6	4:A:304:TTA:H12	2.21	0.70
4:A:304:TTA:C22	5:A:402:HOH:O	2.15	0.70
1:A:151:ILE:CD1	5:A:368:HOH:O	2.40	0.70
1:A:189:GLY:HA3	1:A:193:GLY:HA3	1.74	0.68
1:A:57:SER:HB3	1:A:60:ILE:CD1	2.25	0.66
1:A:82:GLY:O	1:A:183:HIS:HE1	1.78	0.66
1:A:187:ARG:HB3	1:A:193:GLY:O	1.99	0.62
4:A:304:TTA:C8	4:A:304:TTA:H20	2.30	0.62
1:A:63[A]:LEU:CD1	1:A:74:LEU:CD2	2.63	0.59
1:A:189:GLY:HA3	1:A:193:GLY:CA	2.34	0.57
1:A:169:ALA:HA	4:A:304:TTA:C24	2.32	0.57
4:A:304:TTA:C6	4:A:304:TTA:H18	2.36	0.53
4:A:304:TTA:H12	4:A:304:TTA:HC6	1.90	0.52
4:A:304:TTA:H20	4:A:304:TTA:HC8	1.92	0.51
1:A:67:HIS:NE2	1:A:92:GLU:OE2	2.42	0.51
1:A:157:GLU:OE1	1:A:183:HIS:HD2	1.94	0.50
4:A:304:TTA:HC8	4:A:304:TTA:C20	2.43	0.49
1:A:95:GLN:H	1:A:95:GLN:NE2	2.12	0.48
1:A:63[B]:LEU:HD13	1:A:113:VAL:HG13	1.96	0.47
1:A:63[B]:LEU:HD13	1:A:113:VAL:CG1	2.45	0.47
1:A:117:ASN:HD22	1:A:117:ASN:C	2.16	0.47
1:A:174:THR:HG21	4:A:304:TTA:H23	1.97	0.45
1:A:187:ARG:NH2	1:A:198:GLU:OE2	2.46	0.45
1:A:168:GLN:OE1	4:A:304:TTA:C3	2.60	0.44
1:A:153:SER:O	1:A:157:GLU:HB2	2.17	0.44
1:A:188:LYS:HD2	5:A:328:HOH:O	2.18	0.44
1:A:151:ILE:HD11	5:A:368:HOH:O	2.09	0.43
1:A:77:VAL:HG22	1:A:84:ILE:HG12	1.99	0.43
1:A:112:THR:HA	1:A:136:LYS:O	2.18	0.43
1:A:62:GLN:OE1	1:A:151:ILE:HD13	2.20	0.41

*Continued on next page...*

Continued from previous page...

Atom-1	Atom-2	Interatomic distance (Å)	Clash overlap (Å)
4:A:304:TTA:C8	4:A:304:TTA:C20	2.97	0.41

All (3) symmetry-related close contacts are listed below. The label for Atom-2 includes the symmetry operator and encoded unit-cell translations to be applied.

Atom-1	Atom-2	Interatomic distance (Å)	Clash overlap (Å)
5:A:400:HOH:O	5:A:400:HOH:O[4_555]	0.76	1.44
1:A:127:LYS:NZ	5:A:394:HOH:O[5_664]	2.04	0.16
5:A:360:HOH:O	5:A:393:HOH:O[5_564]	2.18	0.02

## 5.3 Torsion angles [i](#)

### 5.3.1 Protein backbone [i](#)

In the following table, the Percentiles column shows the percent Ramachandran outliers of the chain as a percentile score with respect to all X-ray entries followed by that with respect to entries of similar resolution.

The Analysed column shows the number of residues for which the backbone conformation was analysed, and the total number of residues.

Mol	Chain	Analysed	Favoured	Allowed	Outliers	Percentiles
1	A	138/166 (83%)	137 (99%)	1 (1%)	0	100 100

There are no Ramachandran outliers to report.

### 5.3.2 Protein sidechains [i](#)

In the following table, the Percentiles column shows the percent sidechain outliers of the chain as a percentile score with respect to all X-ray entries followed by that with respect to entries of similar resolution.

The Analysed column shows the number of residues for which the sidechain conformation was analysed, and the total number of residues.

Mol	Chain	Analysed	Rotameric	Outliers	Percentiles
1	A	111/133 (84%)	108 (97%)	3 (3%)	44 26

All (3) residues with a non-rotameric sidechain are listed below:

Mol	Chain	Res	Type
1	A	117	ASN
1	A	154	MET
1	A	156	LYS

Sometimes sidechains can be flipped to improve hydrogen bonding and reduce clashes. All (4) such sidechains are listed below:

Mol	Chain	Res	Type
1	A	95	GLN
1	A	117	ASN
1	A	137	GLN
1	A	183	HIS

### 5.3.3 RNA [i](#)

There are no RNA molecules in this entry.

## 5.4 Non-standard residues in protein, DNA, RNA chains [i](#)

2 non-standard protein/DNA/RNA residues are modelled in this entry.

In the following table, the Counts columns list the number of bonds (or angles) for which Mogul statistics could be retrieved, the number of bonds (or angles) that are observed in the model and the number of bonds (or angles) that are defined in the Chemical Component Dictionary. The Link column lists molecule types, if any, to which the group is linked. The Z score for a bond length (or angle) is the number of standard deviations the observed value is removed from the expected value. A bond length (or angle) with  $|Z| > 2$  is considered an outlier worth inspection. RMSZ is the root-mean-square of all Z scores of the bond lengths (or angles).

Mol	Type	Chain	Res	Link	Bond lengths			Bond angles		
					Counts	RMSZ	$\# Z  > 2$	Counts	RMSZ	$\# Z  > 2$
1	CAF	A	130	1	3,8,10	1.15	0	1,9,14	3.96	1 (100%)
1	CAF	A	65	1	3,8,10	1.27	0	1,9,14	0.84	0

In the following table, the Chirals column lists the number of chiral outliers, the number of chiral centers analysed, the number of these observed in the model and the number defined in the Chemical Component Dictionary. Similar counts are reported in the Torsion and Rings columns. '2' means no outliers of that kind were identified.

Mol	Type	Chain	Res	Link	Chirals	Torsions	Rings
1	CAF	A	130	1	-	0/0/7/10	-
1	CAF	A	65	1	-	0/0/7/10	-

There are no bond length outliers.

All (1) bond angle outliers are listed below:

Mol	Chain	Res	Type	Atoms	Z	Observed(°)	Ideal(°)
1	A	130	CAF	CA-CB-SG	-3.96	104.53	112.76

There are no chirality outliers.

There are no torsion outliers.

There are no ring outliers.

No monomer is involved in short contacts.

## 5.5 Carbohydrates [i](#)

There are no monosaccharides in this entry.

## 5.6 Ligand geometry [i](#)

Of 3 ligands modelled in this entry, 1 is monoatomic - leaving 2 for Mogul analysis.

In the following table, the Counts columns list the number of bonds (or angles) for which Mogul statistics could be retrieved, the number of bonds (or angles) that are observed in the model and the number of bonds (or angles) that are defined in the Chemical Component Dictionary. The Link column lists molecule types, if any, to which the group is linked. The Z score for a bond length (or angle) is the number of standard deviations the observed value is removed from the expected value. A bond length (or angle) with  $|Z| > 2$  is considered an outlier worth inspection. RMSZ is the root-mean-square of all Z scores of the bond lengths (or angles).

Mol	Type	Chain	Res	Link	Bond lengths			Bond angles		
					Counts	RMSZ	# Z  > 2	Counts	RMSZ	# Z  > 2
4	TTA	A	304	-	28,28,28	2.20	12 (42%)	38,38,38	2.05	13 (34%)
2	SO4	A	302	-	4,4,4	0.67	0	6,6,6	0.31	0

In the following table, the Chirals column lists the number of chiral outliers, the number of chiral centers analysed, the number of these observed in the model and the number defined in the Chemical Component Dictionary. Similar counts are reported in the Torsion and Rings columns. '-' means no outliers of that kind were identified.

Mol	Type	Chain	Res	Link	Chirals	Torsions	Rings
4	TTA	A	304	-	-	0/24/24/24	0/4/4/4

All (12) bond length outliers are listed below:

Mol	Chain	Res	Type	Atoms	Z	Observed(Å)	Ideal(Å)
4	A	304	TTA	C23-C24	4.62	1.48	1.38
4	A	304	TTA	C15-C14	4.51	1.48	1.38
4	A	304	TTA	C18-C13	3.56	1.47	1.39
4	A	304	TTA	C14-C13	3.56	1.47	1.39
4	A	304	TTA	C11-C10	2.99	1.45	1.38
4	A	304	TTA	C5-C6	2.94	1.45	1.38
4	A	304	TTA	C16-C15	2.75	1.45	1.38
4	A	304	TTA	C23-C22	2.59	1.44	1.38
4	A	304	TTA	C12-C7	2.41	1.45	1.39
4	A	304	TTA	C10-C9	2.31	1.44	1.38
4	A	304	TTA	C8-C7	2.16	1.44	1.39
4	A	304	TTA	C6-C1	2.04	1.44	1.39

All (13) bond angle outliers are listed below:

Mol	Chain	Res	Type	Atoms	Z	Observed(°)	Ideal(°)
4	A	304	TTA	C13-AS-C7	5.42	121.44	109.42
4	A	304	TTA	AS-C1-C6	-4.01	111.38	119.60
4	A	304	TTA	C22-C23-C24	-3.52	114.83	120.19
4	A	304	TTA	C24-C19-C20	3.39	126.77	119.97
4	A	304	TTA	AS-C7-C12	-2.97	113.52	119.60
4	A	304	TTA	C13-AS-C1	-2.94	102.90	109.42
4	A	304	TTA	C23-C22-C21	2.80	125.14	119.93
4	A	304	TTA	AS-C7-C8	2.75	125.22	119.60
4	A	304	TTA	AS-C1-C2	2.55	124.82	119.60
4	A	304	TTA	C21-C20-C19	-2.52	114.76	119.68
4	A	304	TTA	C5-C6-C1	-2.20	115.39	119.68
4	A	304	TTA	C17-C16-C15	2.17	123.96	119.93
4	A	304	TTA	C19-AS-C1	2.06	113.99	109.42

There are no chirality outliers.

There are no torsion outliers.

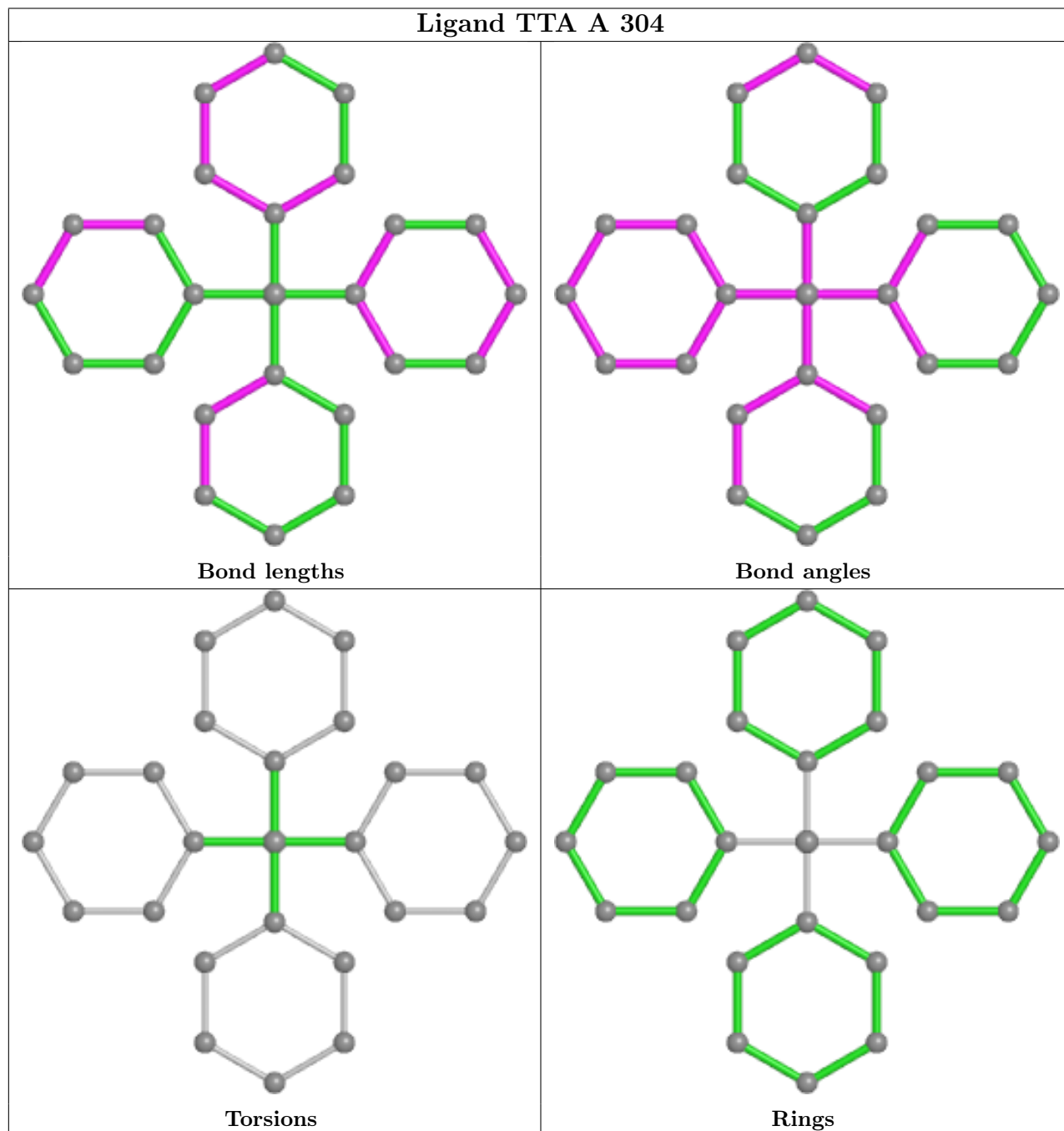
There are no ring outliers.

1 monomer is involved in 14 short contacts:

Mol	Chain	Res	Type	Clashes	Symm-Clashes
4	A	304	TTA	14	0

The following is a two-dimensional graphical depiction of Mogul quality analysis of bond lengths, bond angles, torsion angles, and ring geometry for all instances of the Ligand of Interest. In addition, ligands with molecular weight > 250 and outliers as shown on the validation Tables will also be included. For torsion angles, if less than 5% of the Mogul distribution of torsion angles is

within 10 degrees of the torsion angle in question, then that torsion angle is considered an outlier. Any bond that is central to one or more torsion angles identified as an outlier by Mogul will be highlighted in the graph. For rings, the root-mean-square deviation (RMSD) between the ring in question and similar rings identified by Mogul is calculated over all ring torsion angles. If the average RMSD is greater than 60 degrees and the minimal RMSD between the ring in question and any Mogul-identified rings is also greater than 60 degrees, then that ring is considered an outlier. The outliers are highlighted in purple. The color gray indicates Mogul did not find sufficient equivalents in the CSD to analyse the geometry.



## 5.7 Other polymers [i](#)

There are no such residues in this entry.

## 5.8 Polymer linkage issues [i](#)

There are no chain breaks in this entry.

## 6 Fit of model and data [i](#)

### 6.1 Protein, DNA and RNA chains [i](#)

In the following table, the column labelled ‘#RSRZ> 2’ contains the number (and percentage) of RSRZ outliers, followed by percent RSRZ outliers for the chain as percentile scores relative to all X-ray entries and entries of similar resolution. The OWAB column contains the minimum, median, 95<sup>th</sup> percentile and maximum values of the occupancy-weighted average B-factor per residue. The column labelled ‘Q< 0.9’ lists the number of (and percentage) of residues with an average occupancy less than 0.9.

Mol	Chain	Analysed	<RSRZ>	#RSRZ>2	OWAB(Å <sup>2</sup> )	Q<0.9
1	A	142/166 (85%)	0.69	18 (12%) <b>3</b> <b>4</b>	18, 29, 68, 83	0

All (18) RSRZ outliers are listed below:

Mol	Chain	Res	Type	RSRZ
1	A	210	THR	8.4
1	A	150	VAL	8.2
1	A	189	GLY	7.7
1	A	139	PHE	5.6
1	A	149	GLY	5.4
1	A	193	GLY	4.4
1	A	209	GLN	4.2
1	A	140	GLY	4.1
1	A	194	TYR	4.0
1	A	153	SER	3.9
1	A	151	ILE	3.7
1	A	154	MET	3.3
1	A	57	SER	3.2
1	A	152	GLU	3.2
1	A	148	GLN	3.1
1	A	156	LYS	2.8
1	A	63[A]	LEU	2.7
1	A	208	ILE	2.4

### 6.2 Non-standard residues in protein, DNA, RNA chains [i](#)

In the following table, the Atoms column lists the number of modelled atoms in the group and the number defined in the chemical component dictionary. The B-factors column lists the minimum, median, 95<sup>th</sup> percentile and maximum values of B factors of atoms in the group. The column labelled ‘Q< 0.9’ lists the number of atoms with occupancy less than 0.9.



Mol	Type	Chain	Res	Atoms	RSCC	RSR	B-factors( $\text{\AA}^2$ )	Q<0.9
1	CAF	A	130	9/11	0.95	0.09	19,21,39,43	0
1	CAF	A	65	9/11	0.98	0.05	19,24,35,35	0

### 6.3 Carbohydrates [i](#)

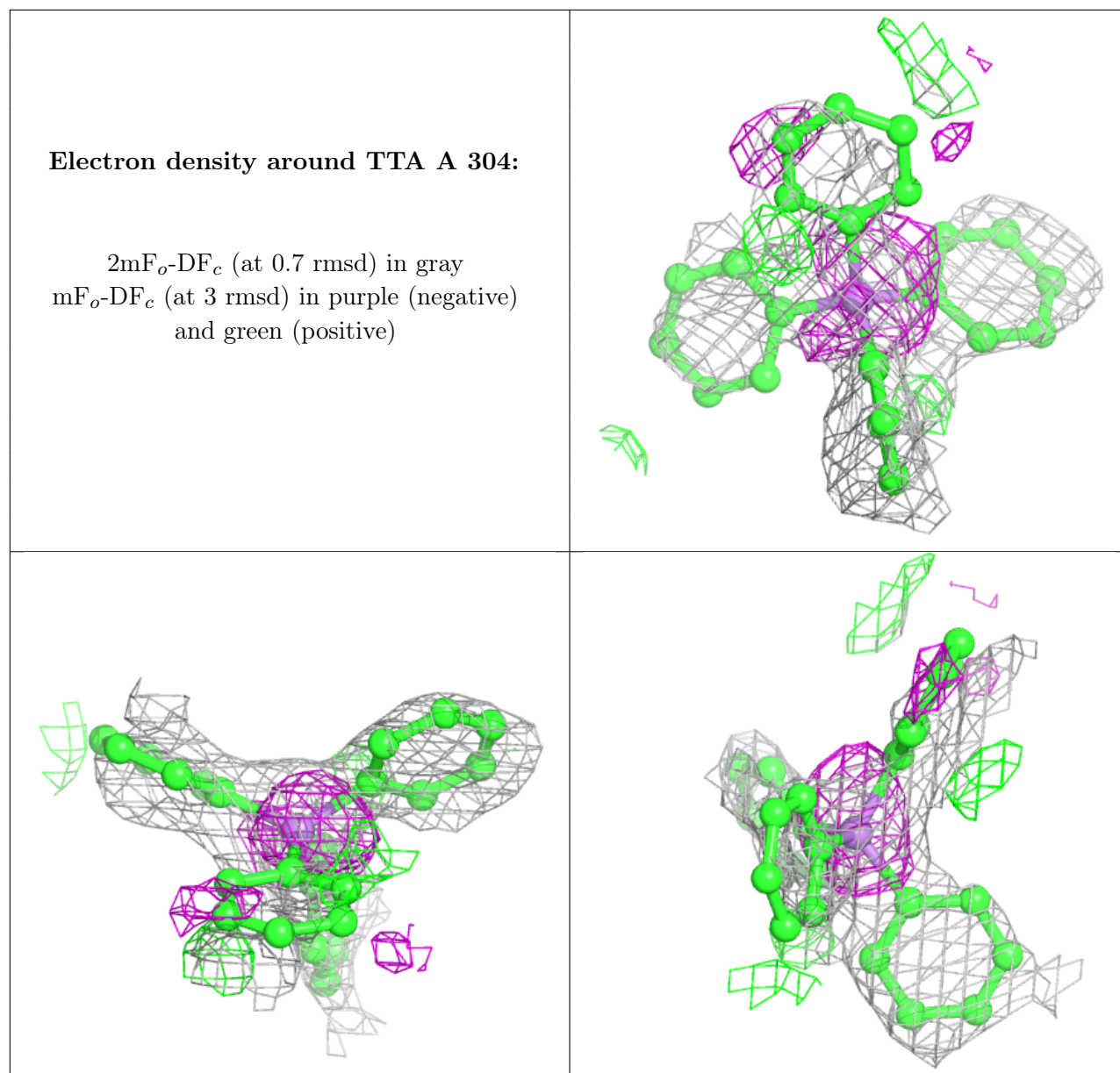
There are no monosaccharides in this entry.

### 6.4 Ligands [i](#)

In the following table, the Atoms column lists the number of modelled atoms in the group and the number defined in the chemical component dictionary. The B-factors column lists the minimum, median, 95<sup>th</sup> percentile and maximum values of B factors of atoms in the group. The column labelled 'Q< 0.9' lists the number of atoms with occupancy less than 0.9.

Mol	Type	Chain	Res	Atoms	RSCC	RSR	B-factors( $\text{\AA}^2$ )	Q<0.9
4	TTA	A	304	25/25	0.75	0.36	78,79,81,81	0
2	SO4	A	302	5/5	0.91	0.28	52,55,56,56	0
3	CL	A	303	1/1	0.95	0.07	52,52,52,52	0

The following is a graphical depiction of the model fit to experimental electron density of all instances of the Ligand of Interest. In addition, ligands with molecular weight > 250 and outliers as shown on the geometry validation Tables will also be included. Each fit is shown from different orientation to approximate a three-dimensional view.



## 6.5 Other polymers [i](#)

There are no such residues in this entry.