



# Full wwPDB X-ray Structure Validation Report ⓘ

May 25, 2020 – 03:48 pm BST

PDB ID : 6HYV  
Title : THE GLIC PENTAMERIC LIGAND-GATED ION CHANNEL MUTANT Y119A  
Authors : Hu, H.D.; Delarue, M.  
Deposited on : 2018-10-22  
Resolution : 2.80 Å(reported)

This is a Full wwPDB X-ray Structure Validation Report for a publicly released PDB entry.

We welcome your comments at [validation@mail.wwpdb.org](mailto:validation@mail.wwpdb.org)

A user guide is available at

<https://www.wwpdb.org/validation/2017/XrayValidationReportHelp>

with specific help available everywhere you see the ⓘ symbol.

---

The following versions of software and data (see [references ⓘ](#)) were used in the production of this report:

MolProbity : 4.02b-467  
Mogul : 1.8.5 (274361), CSD as541be (2020)  
Xtriage (Phenix) : 1.13  
EDS : 2.11  
buster-report : 1.1.7 (2018)  
Percentile statistics : 20191225.v01 (using entries in the PDB archive December 25th 2019)  
Refmac : 5.8.0158  
CCP4 : 7.0.044 (Gargrove)  
Ideal geometry (proteins) : Engh & Huber (2001)  
Ideal geometry (DNA, RNA) : Parkinson et al. (1996)  
Validation Pipeline (wwPDB-VP) : 2.11

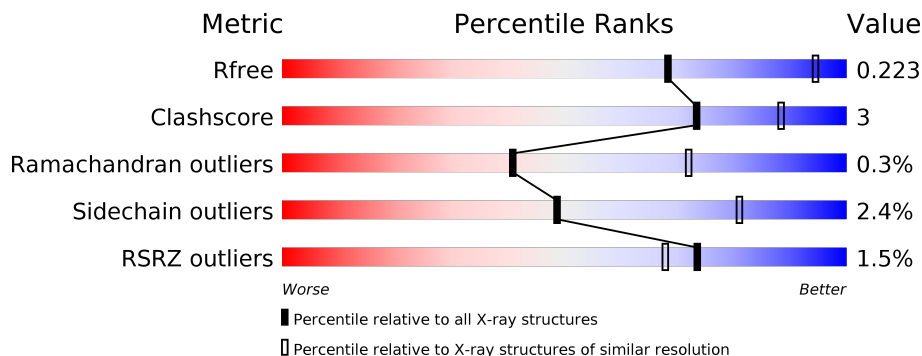
# 1 Overall quality at a glance

The following experimental techniques were used to determine the structure:

*X-RAY DIFFRACTION*

The reported resolution of this entry is 2.80 Å.

Percentile scores (ranging between 0-100) for global validation metrics of the entry are shown in the following graphic. The table shows the number of entries on which the scores are based.



Metric	Whole archive (#Entries)	Similar resolution (#Entries, resolution range(Å))
$R_{free}$	130704	3140 (2.80-2.80)
Clashscore	141614	3569 (2.80-2.80)
Ramachandran outliers	138981	3498 (2.80-2.80)
Sidechain outliers	138945	3500 (2.80-2.80)
RSRZ outliers	127900	3078 (2.80-2.80)

The table below summarises the geometric issues observed across the polymeric chains and their fit to the electron density. The red, orange, yellow and green segments on the lower bar indicate the fraction of residues that contain outliers for  $\geq 3$ , 2, 1 and 0 types of geometric quality criteria respectively. A grey segment represents the fraction of residues that are not modelled. The numeric value for each fraction is indicated below the corresponding segment, with a dot representing fractions  $\leq 5\%$ . The upper red bar (where present) indicates the fraction of residues that have poor fit to the electron density. The numeric value is given above the bar.

Mol	Chain	Length	Quality of chain
1	A	317	 2% 89% 8% ..
1	B	317	 % 87% 10% ..
1	C	317	 3% 88% 9% ..
1	D	317	 % 89% 9% .
1	E	317	 % 89% 9% ..

## 2 Entry composition

There are 7 unique types of molecules in this entry. The entry contains 13322 atoms, of which 0 are hydrogens and 0 are deuteriums.

In the tables below, the ZeroOcc column contains the number of atoms modelled with zero occupancy, the AltConf column contains the number of residues with at least one atom in alternate conformation and the Trace column contains the number of residues modelled with at most 2 atoms.

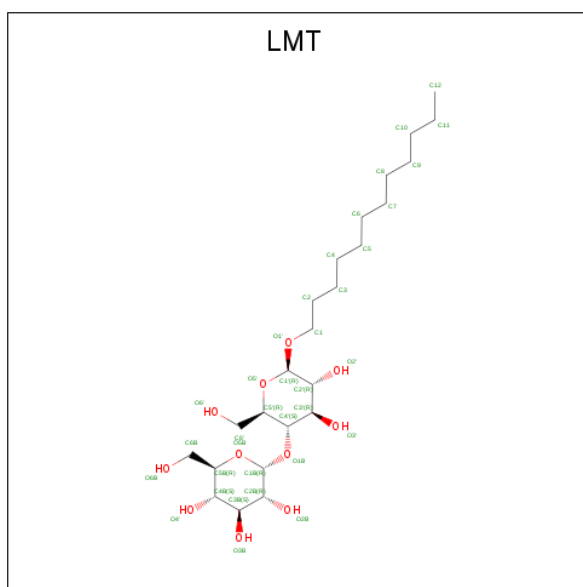
- Molecule 1 is a protein called Proton-gated ion channel.

Mol	Chain	Residues	Atoms					ZeroOcc	AltConf	Trace
			Total	C	N	O	S			
1	A	311	2523	1661	404	454	4	0	1	0
1	B	311	2523	1661	404	454	4	0	1	0
1	C	311	2523	1661	404	454	4	0	1	0
1	D	311	2523	1661	404	454	4	0	1	0
1	E	311	2523	1661	404	454	4	0	1	0

There are 5 discrepancies between the modelled and reference sequences:

Chain	Residue	Modelled	Actual	Comment	Reference
A	119	ALA	TYR	engineered mutation	UNP Q7NDN8
B	119	ALA	TYR	engineered mutation	UNP Q7NDN8
C	119	ALA	TYR	engineered mutation	UNP Q7NDN8
D	119	ALA	TYR	engineered mutation	UNP Q7NDN8
E	119	ALA	TYR	engineered mutation	UNP Q7NDN8

- Molecule 2 is DODECYL-BETA-D-MALTOSE (three-letter code: LMT) (formula: C<sub>24</sub>H<sub>46</sub>O<sub>11</sub>).



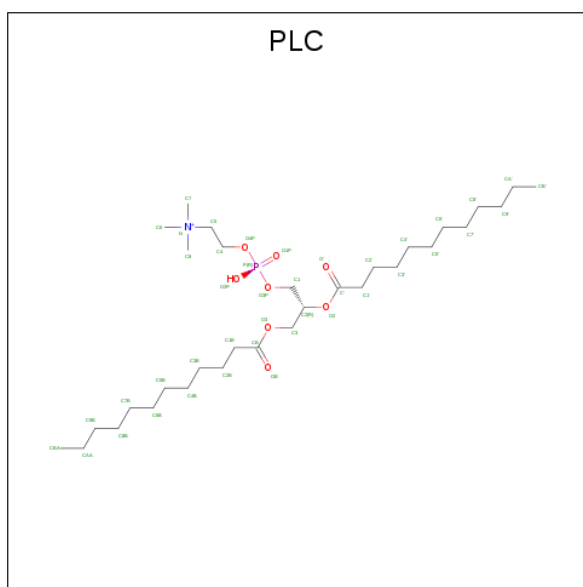
Mol	Chain	Residues	Atoms	ZeroOcc	AltConf
2	A	1	Total C O 35 24 11	0	0
2	A	1	Total C 12 12	0	0
2	B	1	Total C O 35 24 11	0	0
2	B	1	Total C 12 12	0	0
2	C	1	Total C 12 12	0	0
2	C	1	Total C O 35 24 11	0	0
2	C	1	Total C 12 12	0	0
2	D	1	Total C O 35 24 11	0	0
2	D	1	Total C 12 12	0	0
2	E	1	Total C O 35 24 11	0	0
2	E	1	Total C 12 12	0	0

- Molecule 3 is ACETATE ION (three-letter code: ACT) (formula: C<sub>2</sub>H<sub>3</sub>O<sub>2</sub>).



Mol	Chain	Residues	Atoms	ZeroOcc	AltConf
3	A	1	Total C O 4 2 2	0	0
3	A	1	Total C O 4 2 2	0	0
3	B	1	Total C O 4 2 2	0	0
3	B	1	Total C O 4 2 2	0	0
3	C	1	Total C O 4 2 2	0	0
3	C	1	Total C O 4 2 2	0	0
3	D	1	Total C O 4 2 2	0	0
3	D	1	Total C O 4 2 2	0	0
3	E	1	Total C O 4 2 2	0	0
3	E	1	Total C O 4 2 2	0	0

- Molecule 4 is DIUNDECYL PHOSPHATIDYL CHOLINE (three-letter code: PLC) (formula: C<sub>32</sub>H<sub>65</sub>N<sub>1</sub>O<sub>8</sub>P).



Mol	Chain	Residues	Atoms	ZeroOcc	AltConf
4	A	1	Total C N O P 34 24 1 8 1	0	0
4	A	1	Total C 24 24	0	0
4	B	1	Total C N O P 34 24 1 8 1	0	0
4	B	1	Total C 24 24	0	0
4	C	1	Total C N O P 34 24 1 8 1	0	0
4	C	1	Total C 24 24	0	0
4	D	1	Total C N O P 34 24 1 8 1	0	0
4	D	1	Total C 24 24	0	0
4	E	1	Total C N O P 34 24 1 8 1	0	0
4	E	1	Total C 24 24	0	0

- Molecule 5 is CHLORIDE ION (three-letter code: CL) (formula: Cl).

Mol	Chain	Residues	Atoms	ZeroOcc	AltConf
5	B	1	Total Cl 1 1	0	0
5	A	3	Total Cl 3 3	0	0

*Continued on next page...*

*Continued from previous page...*

Mol	Chain	Residues	Atoms	ZeroOcc	AltConf
5	D	1	Total Cl 1 1	0	0
5	C	1	Total Cl 1 1	0	0
5	E	1	Total Cl 1 1	0	0

- Molecule 6 is SODIUM ION (three-letter code: NA) (formula: Na).

Mol	Chain	Residues	Atoms	ZeroOcc	AltConf
6	B	1	Total Na 1 1	0	0
6	A	2	Total Na 2 2	0	0
6	D	1	Total Na 1 1	0	0
6	C	1	Total Na 1 1	0	0
6	E	1	Total Na 1 1	0	0

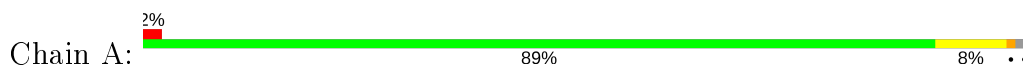
- Molecule 7 is water.

Mol	Chain	Residues	Atoms	ZeroOcc	AltConf
7	A	23	Total O 23 23	0	0
7	B	23	Total O 23 23	0	0
7	C	17	Total O 17 17	0	0
7	D	29	Total O 29 29	0	0
7	E	25	Total O 25 25	0	0

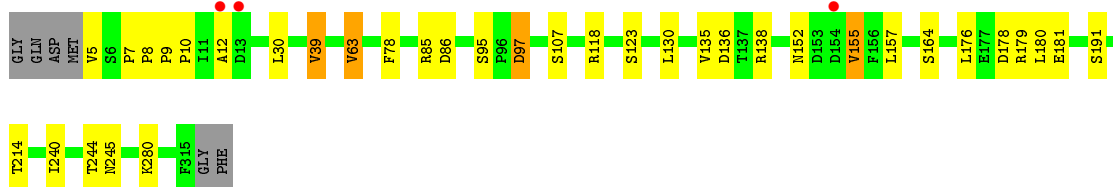
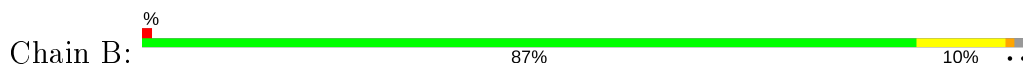
### 3 Residue-property plots [i](#)

These plots are drawn for all protein, RNA and DNA chains in the entry. The first graphic for a chain summarises the proportions of the various outlier classes displayed in the second graphic. The second graphic shows the sequence view annotated by issues in geometry and electron density. Residues are color-coded according to the number of geometric quality criteria for which they contain at least one outlier: green = 0, yellow = 1, orange = 2 and red = 3 or more. A red dot above a residue indicates a poor fit to the electron density ( $RSRZ > 2$ ). Stretches of 2 or more consecutive residues without any outlier are shown as a green connector. Residues present in the sample, but not in the model, are shown in grey.

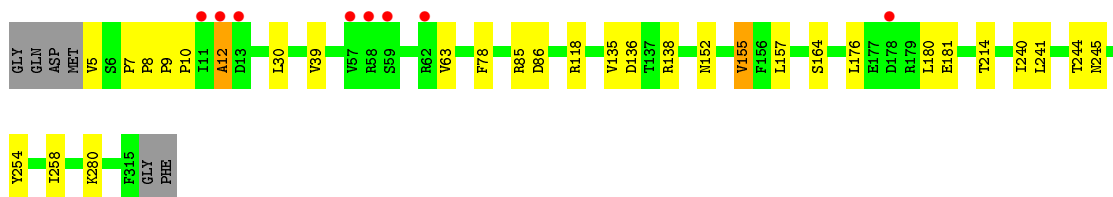
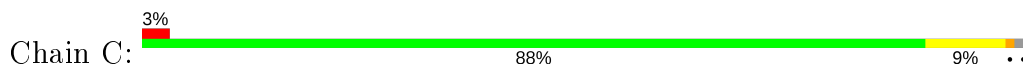
- Molecule 1: Proton-gated ion channel



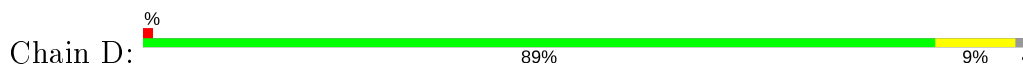
- Molecule 1: Proton-gated ion channel



- Molecule 1: Proton-gated ion channel


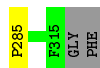


- Molecule 1: Proton-gated ion channel





## ● Molecule 1: Proton-gated ion channel

Chain E:  %  
89% 9% ..

## 4 Data and refinement statistics

Property	Value	Source
Space group	C 1 2 1	Depositor
Cell constants a, b, c, $\alpha$ , $\beta$ , $\gamma$	180.81Å 132.38Å 159.65Å 90.00° 102.22° 90.00°	Depositor
Resolution (Å)	20.00 – 2.80 19.96 – 2.80	Depositor EDS
% Data completeness (in resolution range)	86.9 (20.00-2.80) 86.9 (19.96-2.80)	Depositor EDS
$R_{merge}$	(Not available)	Depositor
$R_{sym}$	(Not available)	Depositor
$\langle I/\sigma(I) \rangle$ <sup>1</sup>	2.29 (at 2.79Å)	Xtrriage
Refinement program	BUSTER 2.10.2	Depositor
R, $R_{free}$	0.209 , 0.221 0.211 , 0.223	Depositor DCC
$R_{free}$ test set	3876 reflections (4.94%)	wwPDB-VP
Wilson B-factor (Å <sup>2</sup> )	47.4	Xtrriage
Anisotropy	0.030	Xtrriage
Bulk solvent $k_{sol}$ (e/Å <sup>3</sup> ), $B_{sol}$ (Å <sup>2</sup> )	0.35 , 59.8	EDS
L-test for twinning <sup>2</sup>	$\langle  L  \rangle = 0.51$ , $\langle L^2 \rangle = 0.34$	Xtrriage
Estimated twinning fraction	No twinning to report.	Xtrriage
$F_o, F_c$ correlation	0.92	EDS
Total number of atoms	13322	wwPDB-VP
Average B, all atoms (Å <sup>2</sup> )	45.0	wwPDB-VP

Xtrriage's analysis on translational NCS is as follows: *The largest off-origin peak in the Patterson function is 3.67% of the height of the origin peak. No significant pseudotranslation is detected.*

<sup>1</sup>Intensities estimated from amplitudes.

<sup>2</sup>Theoretical values of  $\langle |L| \rangle$ ,  $\langle L^2 \rangle$  for acentric reflections are 0.5, 0.333 respectively for untwinned datasets, and 0.375, 0.2 for perfectly twinned datasets.

## 5 Model quality i

### 5.1 Standard geometry i

Bond lengths and bond angles in the following residue types are not validated in this section: NA, ACT, LMT, PLC, CL

The Z score for a bond length (or angle) is the number of standard deviations the observed value is removed from the expected value. A bond length (or angle) with  $|Z| > 5$  is considered an outlier worth inspection. RMSZ is the root-mean-square of all Z scores of the bond lengths (or angles).

Mol	Chain	Bond lengths		Bond angles	
		RMSZ	# Z  >5	RMSZ	# Z  >5
1	A	0.66	2/2593 (0.1%)	0.74	4/3545 (0.1%)
1	B	0.52	0/2593	0.71	1/3545 (0.0%)
1	C	0.50	0/2593	0.72	1/3545 (0.0%)
1	D	0.61	2/2593 (0.1%)	0.75	3/3545 (0.1%)
1	E	0.51	0/2593	0.71	1/3545 (0.0%)
All	All	0.56	4/12965 (0.0%)	0.73	10/17725 (0.1%)

Chiral center outliers are detected by calculating the chiral volume of a chiral center and verifying if the center is modelled as a planar moiety or with the opposite hand. A planarity outlier is detected by checking planarity of atoms in a peptide group, atoms in a mainchain group or atoms of a sidechain that are expected to be planar.

Mol	Chain	#Chirality outliers	#Planarity outliers
1	B	0	1

All (4) bond length outliers are listed below:

Mol	Chain	Res	Type	Atoms	Z	Observed(Å)	Ideal(Å)
1	A	12	ALA	C-N	17.03	1.73	1.34
1	D	11	ILE	C-N	13.04	1.64	1.34
1	A	11	ILE	C-N	-12.76	1.04	1.34
1	D	12	ALA	C-N	-10.06	1.10	1.34

All (10) bond angle outliers are listed below:

Mol	Chain	Res	Type	Atoms	Z	Observed(°)	Ideal(°)
1	D	12	ALA	N-CA-C	-9.90	84.27	111.00
1	C	12	ALA	N-CA-C	-8.37	88.39	111.00
1	A	12	ALA	N-CA-C	-8.37	88.40	111.00
1	E	12	ALA	N-CA-C	-8.37	88.41	111.00

*Continued on next page...*

Continued from previous page...

Mol	Chain	Res	Type	Atoms	Z	Observed(°)	Ideal(°)
1	D	12	ALA	CB-CA-C	-7.65	98.62	110.10
1	A	11	ILE	O-C-N	7.14	134.12	122.70
1	A	12	ALA	C-N-CA	6.32	137.51	121.70
1	D	12	ALA	O-C-N	5.86	132.07	122.70
1	B	12	ALA	N-CA-C	5.78	126.60	111.00
1	A	11	ILE	CA-C-N	-5.07	106.05	117.20

There are no chirality outliers.

All (1) planarity outliers are listed below:

Mol	Chain	Res	Type	Group
1	B	97	ASP	Sidechain

## 5.2 Too-close contacts

In the following table, the Non-H and H(model) columns list the number of non-hydrogen atoms and hydrogen atoms in the chain respectively. The H(added) column lists the number of hydrogen atoms added and optimized by MolProbity. The Clashes column lists the number of clashes within the asymmetric unit, whereas Symm-Clashes lists symmetry related clashes.

Mol	Chain	Non-H	H(model)	H(added)	Clashes	Symm-Clashes
1	A	2523	0	2543	17	0
1	B	2523	0	2545	19	0
1	C	2523	0	2545	16	0
1	D	2523	0	2544	17	0
1	E	2523	0	2545	16	0
2	A	47	0	69	3	0
2	B	47	0	69	1	0
2	C	59	0	92	3	0
2	D	47	0	69	1	0
2	E	47	0	69	1	0
3	A	8	0	6	1	0
3	B	8	0	6	0	0
3	C	8	0	6	0	0
3	D	8	0	6	0	0
3	E	8	0	6	0	0
4	A	58	0	88	3	0
4	B	58	0	88	3	0
4	C	58	0	88	3	0
4	D	58	0	88	3	0
4	E	58	0	88	3	0

Continued on next page...

Continued from previous page...

Mol	Chain	Non-H	H(model)	H(added)	Clashes	Symm-Clashes
5	A	3	0	0	0	0
5	B	1	0	0	0	0
5	C	1	0	0	0	0
5	D	1	0	0	0	0
5	E	1	0	0	0	0
6	A	2	0	0	0	0
6	B	1	0	0	0	0
6	C	1	0	0	0	0
6	D	1	0	0	0	0
6	E	1	0	0	0	0
7	A	23	0	0	0	0
7	B	23	0	0	0	0
7	C	17	0	0	0	0
7	D	29	0	0	1	0
7	E	25	0	0	0	0
All	All	13322	0	13560	89	0

The all-atom clashscore is defined as the number of clashes found per 1000 atoms (including hydrogen atoms). The all-atom clashscore for this structure is 3.

All (89) close contacts within the same asymmetric unit are listed below, sorted by their clash magnitude.

Atom-1	Atom-2	Interatomic distance (Å)	Clash overlap (Å)
1:A:12:ALA:C	1:A:13:ASP:N	1.73	1.42
1:A:10:PRO:HB2	1:A:12:ALA:O	1.56	1.06
1:E:10:PRO:HB2	1:E:12:ALA:O	1.54	1.06
1:C:10:PRO:HB2	1:C:12:ALA:O	1.57	1.03
1:D:10:PRO:HB2	1:D:12:ALA:O	1.57	1.01
1:D:139:ASN:HB3	7:D:527:HOH:O	1.84	0.76
1:B:7:PRO:HG3	1:B:135:VAL:HG21	1.76	0.66
2:A:411:LMT:H92	2:C:401:LMT:H62	1.77	0.66
1:D:7:PRO:HG3	1:D:135:VAL:HG21	1.77	0.66
1:C:7:PRO:HG3	1:C:135:VAL:HG21	1.78	0.65
1:D:78:PHE:CE2	1:D:85:ARG:HD3	2.32	0.64
1:A:78:PHE:CE2	1:A:85:ARG:HD3	2.31	0.63
1:A:7:PRO:HG3	1:A:135:VAL:HG21	1.79	0.63
1:B:78:PHE:CE2	1:B:85:ARG:HD3	2.32	0.63
1:C:78:PHE:CE2	1:C:85:ARG:HD3	2.34	0.63
1:E:78:PHE:CE2	1:E:85:ARG:HD3	2.33	0.62
1:A:240:ILE:O	1:A:244:THR:HG23	2.01	0.61
4:C:404:PLC:H3'2	4:C:404:PLC:H1A2	1.82	0.61

Continued on next page...

*Continued from previous page...*

Atom-1	Atom-2	Interatomic distance (Å)	Clash overlap (Å)
4:E:403:PLC:H3'2	4:E:403:PLC:H1A2	1.82	0.61
4:D:403:PLC:H1A2	4:D:403:PLC:H3'2	1.84	0.60
1:C:240:ILE:O	1:C:244:THR:HG23	2.02	0.60
1:D:240:ILE:O	1:D:244:THR:HG23	2.01	0.59
4:A:403:PLC:H1A2	4:A:403:PLC:H3'2	1.83	0.59
1:E:7:PRO:HG3	1:E:135:VAL:HG21	1.84	0.59
4:B:403:PLC:H3'2	4:B:403:PLC:H1A2	1.83	0.59
1:B:240:ILE:O	1:B:244:THR:HG23	2.01	0.59
1:E:240:ILE:O	1:E:244:THR:HG23	2.02	0.58
1:A:135:VAL:HG23	1:A:138:ARG:H	1.70	0.56
1:D:135:VAL:HG23	1:D:138:ARG:H	1.69	0.56
1:E:135:VAL:HG23	1:E:138:ARG:H	1.72	0.55
1:D:78:PHE:HE2	1:D:85:ARG:HD3	1.72	0.55
1:A:78:PHE:HE2	1:A:85:ARG:HD3	1.72	0.54
1:B:78:PHE:HE2	1:B:85:ARG:HD3	1.73	0.54
1:D:12:ALA:O	1:D:14:GLU:OE1	2.26	0.53
1:E:78:PHE:HE2	1:E:85:ARG:HD3	1.72	0.53
1:B:135:VAL:HG23	1:B:138:ARG:H	1.72	0.52
1:C:135:VAL:HG23	1:C:138:ARG:H	1.74	0.52
1:A:85:ARG:HH22	3:A:410:ACT:H1	1.74	0.52
1:E:118:ARG:HH12	4:E:403:PLC:H72	1.75	0.51
1:C:152:ASN:HB3	1:C:155:VAL:HG23	1.92	0.51
2:A:411:LMT:H112	2:C:401:LMT:H82	1.92	0.51
1:A:118:ARG:HH12	4:A:403:PLC:H72	1.77	0.50
1:E:152:ASN:HB3	1:E:155:VAL:HG23	1.93	0.50
1:C:176:LEU:HB3	1:C:181:GLU:HG3	1.94	0.49
1:B:118:ARG:HH12	4:B:403:PLC:H72	1.78	0.49
1:C:118:ARG:HH12	4:C:404:PLC:H72	1.77	0.49
1:C:78:PHE:HE2	1:C:85:ARG:HD3	1.75	0.49
1:D:176:LEU:HB3	1:D:181:GLU:HG3	1.95	0.49
1:E:176:LEU:HB3	1:E:181:GLU:HG3	1.94	0.49
1:A:152:ASN:HB3	1:A:155:VAL:HG23	1.95	0.49
1:D:152:ASN:HB3	1:D:155:VAL:HG23	1.95	0.49
1:D:118:ARG:HH12	4:D:403:PLC:H72	1.78	0.48
1:B:152:ASN:HB3	1:B:155:VAL:HG23	1.95	0.48
1:B:176:LEU:HB3	1:B:181:GLU:HG3	1.95	0.48
1:B:63:VAL:HG21	1:C:136:ASP:HB3	1.94	0.47
1:A:176:LEU:HB3	1:A:181:GLU:HG3	1.96	0.47
1:A:11:ILE:HD12	1:A:12:ALA:HB2	1.99	0.45
1:E:30:LEU:HD12	1:E:157:LEU:HD21	1.99	0.45
1:C:30:LEU:HD12	1:C:157:LEU:HD21	1.99	0.45

*Continued on next page...*

Continued from previous page...

Atom-1	Atom-2	Interatomic distance (Å)	Clash overlap (Å)
1:A:214:THR:HG22	4:A:404:PLC:H3'2	1.99	0.44
1:C:214:THR:HG22	4:C:405:PLC:H3'2	1.98	0.44
1:B:95:SER:OG	1:B:97:ASP:OD1	2.35	0.44
1:D:280:LYS:HE3	1:D:285:PRO:HB3	2.00	0.44
1:E:214:THR:HG22	4:E:404:PLC:H3'2	1.99	0.44
1:D:245:ASN:HB3	2:D:401:LMT:H12	2.00	0.44
1:B:214:THR:HG22	4:B:404:PLC:H3'2	1.99	0.43
1:D:214:THR:HG22	4:D:404:PLC:H3'2	2.01	0.43
1:A:11:ILE:HD12	1:A:12:ALA:CB	2.49	0.43
1:E:245:ASN:HB3	2:E:401:LMT:H12	2.01	0.43
1:B:245:ASN:HB3	2:B:401:LMT:H12	2.01	0.42
1:B:30:LEU:HD12	1:B:157:LEU:HD21	2.02	0.42
1:A:30:LEU:HD12	1:A:157:LEU:HD21	2.02	0.42
1:B:10:PRO:HD3	1:B:138:ARG:HD2	2.01	0.42
1:E:280:LYS:HE3	1:E:285:PRO:HB3	2.02	0.41
1:C:245:ASN:HB3	2:C:402:LMT:H12	2.02	0.41
1:B:39:VAL:O	1:B:107:SER:HA	2.20	0.41
1:C:241:LEU:HD22	1:D:240:ILE:HG12	2.03	0.41
1:C:254:TYR:CZ	1:C:258:ILE:HD11	2.55	0.41
1:D:241:LEU:HD22	1:E:240:ILE:HG12	2.03	0.41
1:B:123:SER:HA	1:B:191:SER:HA	2.02	0.41
1:E:254:TYR:CZ	1:E:258:ILE:HD11	2.56	0.41
1:A:245:ASN:HB3	2:A:401:LMT:H12	2.03	0.41
1:B:8:PRO:HA	1:B:9:PRO:HD3	1.91	0.41
1:C:8:PRO:HA	1:C:9:PRO:HD3	1.92	0.41
1:D:293:ARG:HA	1:D:296:ARG:HD2	2.03	0.40
1:B:130:LEU:HA	1:B:130:LEU:HD23	1.94	0.40
1:B:178:ASP:O	1:B:179:ARG:HG2	2.22	0.40
1:A:8:PRO:HA	1:A:9:PRO:HD3	1.95	0.40
1:E:8:PRO:HA	1:E:9:PRO:HD3	1.92	0.40

There are no symmetry-related clashes.

## 5.3 Torsion angles [i](#)

### 5.3.1 Protein backbone [i](#)

In the following table, the Percentiles column shows the percent Ramachandran outliers of the chain as a percentile score with respect to all X-ray entries followed by that with respect to entries of similar resolution.

The Analysed column shows the number of residues for which the backbone conformation was analysed, and the total number of residues.

Mol	Chain	Analysed	Favoured	Allowed	Outliers	Percentiles	
1	A	310/317 (98%)	301 (97%)	8 (3%)	1 (0%)	41	72
1	B	310/317 (98%)	300 (97%)	9 (3%)	1 (0%)	41	72
1	C	310/317 (98%)	302 (97%)	7 (2%)	1 (0%)	41	72
1	D	310/317 (98%)	302 (97%)	8 (3%)	0	100	100
1	E	310/317 (98%)	302 (97%)	7 (2%)	1 (0%)	41	72
All	All	1550/1585 (98%)	1507 (97%)	39 (2%)	4 (0%)	41	72

All (4) Ramachandran outliers are listed below:

Mol	Chain	Res	Type
1	C	155	VAL
1	A	155	VAL
1	B	155	VAL
1	E	155	VAL

### 5.3.2 Protein sidechains [i](#)

In the following table, the Percentiles column shows the percent sidechain outliers of the chain as a percentile score with respect to all X-ray entries followed by that with respect to entries of similar resolution.

The Analysed column shows the number of residues for which the sidechain conformation was analysed, and the total number of residues.

Mol	Chain	Analysed	Rotameric	Outliers	Percentiles	
1	A	280/283 (99%)	274 (98%)	6 (2%)	53	84
1	B	280/283 (99%)	272 (97%)	8 (3%)	42	76
1	C	280/283 (99%)	273 (98%)	7 (2%)	47	80
1	D	280/283 (99%)	274 (98%)	6 (2%)	53	84
1	E	280/283 (99%)	274 (98%)	6 (2%)	53	84
All	All	1400/1415 (99%)	1367 (98%)	33 (2%)	49	81

All (33) residues with a non-rotameric sidechain are listed below:

Mol	Chain	Res	Type
1	A	5	VAL

*Continued on next page...*



*Continued from previous page...*

<b>Mol</b>	<b>Chain</b>	<b>Res</b>	<b>Type</b>
1	A	39	VAL
1	A	63	VAL
1	A	86	ASP
1	A	164	SER
1	A	280	LYS
1	B	5	VAL
1	B	39	VAL
1	B	63	VAL
1	B	86	ASP
1	B	136	ASP
1	B	164	SER
1	B	180	LEU
1	B	280	LYS
1	C	5	VAL
1	C	39	VAL
1	C	63	VAL
1	C	86	ASP
1	C	164	SER
1	C	180	LEU
1	C	280	LYS
1	D	5	VAL
1	D	39	VAL
1	D	63	VAL
1	D	86	ASP
1	D	164	SER
1	D	180	LEU
1	E	5	VAL
1	E	39	VAL
1	E	63	VAL
1	E	86	ASP
1	E	147	GLU
1	E	164	SER

Some sidechains can be flipped to improve hydrogen bonding and reduce clashes. All (10) such sidechains are listed below:

<b>Mol</b>	<b>Chain</b>	<b>Res</b>	<b>Type</b>
1	A	152	ASN
1	A	284	GLN
1	B	152	ASN
1	B	284	GLN
1	C	152	ASN
1	C	284	GLN

*Continued on next page...*

Continued from previous page...

Mol	Chain	Res	Type
1	D	139	ASN
1	D	152	ASN
1	D	284	GLN
1	E	284	GLN

### 5.3.3 RNA [i](#)

There are no RNA molecules in this entry.

### 5.4 Non-standard residues in protein, DNA, RNA chains [i](#)

There are no non-standard protein/DNA/RNA residues in this entry.

### 5.5 Carbohydrates [i](#)

There are no carbohydrates in this entry.

### 5.6 Ligand geometry [i](#)

Of 44 ligands modelled in this entry, 13 are monoatomic - leaving 31 for Mogul analysis.

In the following table, the Counts columns list the number of bonds (or angles) for which Mogul statistics could be retrieved, the number of bonds (or angles) that are observed in the model and the number of bonds (or angles) that are defined in the Chemical Component Dictionary. The Link column lists molecule types, if any, to which the group is linked. The Z score for a bond length (or angle) is the number of standard deviations the observed value is removed from the expected value. A bond length (or angle) with  $|Z| > 2$  is considered an outlier worth inspection. RMSZ is the root-mean-square of all Z scores of the bond lengths (or angles).

Mol	Type	Chain	Res	Link	Bond lengths			Bond angles		
					Counts	RMSZ	$\# Z  > 2$	Counts	RMSZ	$\# Z  > 2$
2	LMT	A	411	-	11,11,36	0.36	0	10,10,47	0.34	0
3	ACT	B	407	-	1,3,3	1.22	0	0,3,3	0.00	-
4	PLC	C	405	-	22,22,41	0.28	0	20,20,49	0.31	0
2	LMT	C	409	-	11,11,36	0.22	0	10,10,47	0.19	0
4	PLC	A	404	-	22,22,41	0.23	0	20,20,49	0.29	0
2	LMT	B	401	-	36,36,36	0.26	0	47,47,47	0.92	4 (8%)
3	ACT	D	402	-	1,3,3	3.58	1 (100%)	0,3,3	0.00	-
4	PLC	D	404	-	22,22,41	0.28	0	20,20,49	0.36	0
4	PLC	E	404	-	22,22,41	0.26	0	20,20,49	0.25	0

Mol	Type	Chain	Res	Link	Bond lengths			Bond angles		
					Counts	RMSZ	# Z  > 2	Counts	RMSZ	# Z  > 2
2	LMT	C	401	-	11,11,36	0.21	0	10,10,47	0.19	0
2	LMT	E	401	-	36,36,36	0.26	0	47,47,47	0.85	2 (4%)
4	PLC	B	404	-	22,22,41	0.24	0	20,20,49	0.30	0
4	PLC	B	403	-	33,33,41	0.54	0	39,41,49	0.63	0
3	ACT	A	410	-	1,3,3	2.76	1 (100%)	0,3,3	0.00	-
2	LMT	D	401	-	36,36,36	0.26	0	47,47,47	0.88	2 (4%)
4	PLC	D	403	-	33,33,41	0.54	0	39,41,49	0.65	1 (2%)
2	LMT	C	402	-	36,36,36	0.25	0	47,47,47	0.88	3 (6%)
3	ACT	D	407	-	1,3,3	2.66	1 (100%)	0,3,3	0.00	-
2	LMT	B	408	-	11,11,36	0.27	0	10,10,47	0.23	0
2	LMT	D	408	-	11,11,36	0.22	0	10,10,47	0.10	0
2	LMT	E	408	-	11,11,36	0.23	0	10,10,47	0.21	0
3	ACT	B	402	-	1,3,3	4.64	1 (100%)	0,3,3	0.00	-
4	PLC	A	403	-	33,33,41	0.52	0	39,41,49	0.64	1 (2%)
3	ACT	E	407	-	1,3,3	1.22	0	0,3,3	0.00	-
3	ACT	C	403	-	1,3,3	5.85	1 (100%)	0,3,3	0.00	-
3	ACT	E	402	-	1,3,3	4.72	1 (100%)	0,3,3	0.00	-
3	ACT	C	408	-	1,3,3	3.37	1 (100%)	0,3,3	0.00	-
3	ACT	A	402	-	1,3,3	4.12	1 (100%)	0,3,3	0.00	-
4	PLC	E	403	-	33,33,41	0.51	0	39,41,49	0.65	1 (2%)
4	PLC	C	404	-	33,33,41	0.52	0	39,41,49	0.66	1 (2%)
2	LMT	A	401	-	36,36,36	0.23	0	47,47,47	0.90	3 (6%)

In the following table, the Chirals column lists the number of chiral outliers, the number of chiral centers analysed, the number of these observed in the model and the number defined in the Chemical Component Dictionary. Similar counts are reported in the Torsion and Rings columns. '-' means no outliers of that kind were identified.

Mol	Type	Chain	Res	Link	Chirals	Torsions	Rings
4	PLC	E	404	-	-	1/18/18/45	-
2	LMT	C	401	-	-	0/9/9/61	-
2	LMT	A	411	-	-	0/9/9/61	-
2	LMT	E	401	-	-	11/21/61/61	0/2/2/2
4	PLC	A	404	-	-	2/18/18/45	-
4	PLC	B	404	-	-	2/18/18/45	-
4	PLC	D	403	-	-	11/37/37/45	-
4	PLC	B	403	-	-	11/37/37/45	-
2	LMT	C	409	-	-	1/9/9/61	-

Continued on next page...

Continued from previous page...

Mol	Type	Chain	Res	Link	Chirals	Torsions	Rings
4	PLC	C	405	-	-	3/18/18/45	-
2	LMT	C	402	-	-	10/21/61/61	0/2/2/2
2	LMT	B	408	-	-	0/9/9/61	-
2	LMT	D	408	-	-	0/9/9/61	-
2	LMT	E	408	-	-	0/9/9/61	-
4	PLC	A	403	-	-	11/37/37/45	-
2	LMT	D	401	-	-	11/21/61/61	0/2/2/2
2	LMT	B	401	-	-	11/21/61/61	0/2/2/2
4	PLC	D	404	-	-	2/18/18/45	-
4	PLC	E	403	-	-	11/37/37/45	-
4	PLC	C	404	-	-	11/37/37/45	-
2	LMT	A	401	-	-	11/21/61/61	0/2/2/2

All (8) bond length outliers are listed below:

Mol	Chain	Res	Type	Atoms	Z	Observed(Å)	Ideal(Å)
3	C	403	ACT	CH3-C	5.85	1.56	1.48
3	E	402	ACT	CH3-C	4.72	1.54	1.48
3	B	402	ACT	CH3-C	4.64	1.54	1.48
3	A	402	ACT	CH3-C	4.12	1.54	1.48
3	D	402	ACT	CH3-C	3.58	1.53	1.48
3	C	408	ACT	CH3-C	3.37	1.53	1.48
3	A	410	ACT	CH3-C	2.76	1.52	1.48
3	D	407	ACT	CH3-C	2.66	1.52	1.48

All (18) bond angle outliers are listed below:

Mol	Chain	Res	Type	Atoms	Z	Observed(°)	Ideal(°)
2	B	401	LMT	O1B-C4'-C5'	-2.53	102.50	109.45
2	D	401	LMT	O3'-C3'-C4'	2.52	116.62	109.94
2	B	401	LMT	O3'-C3'-C4'	2.47	116.49	109.94
2	E	401	LMT	O3'-C3'-C4'	2.47	116.49	109.94
2	C	402	LMT	C1B-O1B-C4'	2.44	124.01	117.96
2	C	402	LMT	O3'-C3'-C4'	2.39	116.27	109.94
2	A	401	LMT	O3'-C3'-C4'	2.36	116.20	109.94
2	A	401	LMT	C1B-O1B-C4'	2.36	123.81	117.96
2	A	401	LMT	O1B-C4'-C5'	-2.32	103.08	109.45
2	D	401	LMT	C1B-O1B-C4'	2.31	123.68	117.96
2	B	401	LMT	C1B-O1B-C4'	2.30	123.67	117.96
2	E	401	LMT	C1B-O1B-C4'	2.29	123.63	117.96

Continued on next page...

*Continued from previous page...*

Mol	Chain	Res	Type	Atoms	Z	Observed(°)	Ideal(°)
2	B	401	LMT	O1B-C4'-C3'	2.07	112.78	107.28
4	E	403	PLC	P-O4P-C4	-2.06	111.43	121.59
4	C	404	PLC	P-O4P-C4	-2.04	111.53	121.59
2	C	402	LMT	O1B-C4'-C5'	-2.04	103.85	109.45
4	D	403	PLC	P-O4P-C4	-2.02	111.67	121.59
4	A	403	PLC	P-O4P-C4	-2.00	111.74	121.59

There are no chirality outliers.

All (120) torsion outliers are listed below:

Mol	Chain	Res	Type	Atoms
2	B	401	LMT	C2'-C1'-O1'-C1
2	B	401	LMT	O5'-C1'-O1'-C1
2	E	401	LMT	C2'-C1'-O1'-C1
2	E	401	LMT	O5'-C1'-O1'-C1
4	B	403	PLC	C1-O3P-P-O1P
4	B	403	PLC	C1-O3P-P-O2P
4	B	403	PLC	C1-O3P-P-O4P
2	D	401	LMT	C2'-C1'-O1'-C1
2	D	401	LMT	O5'-C1'-O1'-C1
4	D	403	PLC	C1-O3P-P-O1P
4	D	403	PLC	C1-O3P-P-O2P
4	D	403	PLC	C1-O3P-P-O4P
2	C	402	LMT	C2'-C1'-O1'-C1
2	C	402	LMT	O5'-C1'-O1'-C1
4	A	403	PLC	C1-O3P-P-O1P
4	A	403	PLC	C1-O3P-P-O2P
4	A	403	PLC	C1-O3P-P-O4P
4	E	403	PLC	C1-O3P-P-O1P
4	E	403	PLC	C1-O3P-P-O2P
4	E	403	PLC	C1-O3P-P-O4P
4	C	404	PLC	C1-O3P-P-O1P
4	C	404	PLC	C1-O3P-P-O2P
4	C	404	PLC	C1-O3P-P-O4P
2	A	401	LMT	C2'-C1'-O1'-C1
2	A	401	LMT	O5'-C1'-O1'-C1
2	B	401	LMT	O5B-C1B-O1B-C4'
2	E	401	LMT	O5B-C1B-O1B-C4'
2	D	401	LMT	O5B-C1B-O1B-C4'
2	C	402	LMT	O5B-C1B-O1B-C4'
2	A	401	LMT	O5B-C1B-O1B-C4'
2	B	401	LMT	C4'-C5'-C6'-O6'

*Continued on next page...*

*Continued from previous page...*

Mol	Chain	Res	Type	Atoms
2	E	401	LMT	C4'-C5'-C6'-O6'
2	C	402	LMT	C4'-C5'-C6'-O6'
2	D	401	LMT	C4'-C5'-C6'-O6'
2	B	401	LMT	O5'-C5'-C6'-O6'
2	E	401	LMT	O5'-C5'-C6'-O6'
2	D	401	LMT	O5'-C5'-C6'-O6'
2	C	402	LMT	O5'-C5'-C6'-O6'
2	A	401	LMT	O5'-C5'-C6'-O6'
2	A	401	LMT	C4'-C5'-C6'-O6'
4	C	404	PLC	C'-C1'-C2'-C3'
4	A	403	PLC	C'-C1'-C2'-C3'
4	E	403	PLC	C'-C1'-C2'-C3'
4	B	403	PLC	C'-C1'-C2'-C3'
4	D	403	PLC	C'-C1'-C2'-C3'
2	D	401	LMT	C6-C7-C8-C9
2	C	402	LMT	C6-C7-C8-C9
2	A	401	LMT	C6-C7-C8-C9
2	E	401	LMT	C6-C7-C8-C9
2	B	401	LMT	C6-C7-C8-C9
4	B	403	PLC	O3P-C1-C2-C3
4	D	403	PLC	O3P-C1-C2-C3
4	A	403	PLC	O3P-C1-C2-C3
4	E	403	PLC	O3P-C1-C2-C3
4	C	404	PLC	O3P-C1-C2-C3
2	B	401	LMT	C5'-C4'-O1B-C1B
2	A	401	LMT	C5'-C4'-O1B-C1B
2	C	402	LMT	C5'-C4'-O1B-C1B
2	D	401	LMT	C5'-C4'-O1B-C1B
2	B	401	LMT	C5-C6-C7-C8
4	B	403	PLC	O3P-C1-C2-O2
4	D	403	PLC	O3P-C1-C2-O2
4	A	403	PLC	O3P-C1-C2-O2
4	E	403	PLC	O3P-C1-C2-O2
4	C	404	PLC	O3P-C1-C2-O2
2	D	401	LMT	C5-C6-C7-C8
2	E	401	LMT	C5'-C4'-O1B-C1B
2	A	401	LMT	C5-C6-C7-C8
2	E	401	LMT	C5-C6-C7-C8
2	C	402	LMT	C5-C6-C7-C8
2	B	401	LMT	C3'-C4'-O1B-C1B
2	C	402	LMT	C3'-C4'-O1B-C1B
2	D	401	LMT	C3'-C4'-O1B-C1B

*Continued on next page...*

*Continued from previous page...*

Mol	Chain	Res	Type	Atoms
2	A	401	LMT	C3'-C4'-O1B-C1B
4	E	404	PLC	C8'-C9'-CA'-CB'
4	B	403	PLC	O4P-C4-C5-N
4	D	403	PLC	O4P-C4-C5-N
4	A	403	PLC	O4P-C4-C5-N
4	E	403	PLC	O4P-C4-C5-N
4	C	404	PLC	O4P-C4-C5-N
2	E	401	LMT	C3'-C4'-O1B-C1B
2	E	401	LMT	C3-C4-C5-C6
4	C	405	PLC	C8'-C9'-CA'-CB'
4	C	405	PLC	C6'-C7'-C8'-C9'
4	B	403	PLC	C4-O4P-P-O3P
4	D	403	PLC	C4-O4P-P-O3P
4	A	403	PLC	C4-O4P-P-O3P
4	E	403	PLC	C4-O4P-P-O3P
4	C	404	PLC	C4-O4P-P-O3P
4	A	404	PLC	C6'-C7'-C8'-C9'
2	C	402	LMT	C3-C4-C5-C6
2	A	401	LMT	C3-C4-C5-C6
4	B	404	PLC	C6'-C7'-C8'-C9'
4	D	404	PLC	C8'-C9'-CA'-CB'
4	C	405	PLC	C7B-C8B-C9B-CAA
2	D	401	LMT	C3-C4-C5-C6
2	B	401	LMT	C3-C4-C5-C6
4	D	403	PLC	C1'-C2'-C3'-C4'
2	C	409	LMT	C4-C5-C6-C7
4	D	404	PLC	C6'-C7'-C8'-C9'
4	B	404	PLC	C8'-C9'-CA'-CB'
4	E	403	PLC	C1'-C2'-C3'-C4'
4	A	403	PLC	C1'-C2'-C3'-C4'
4	D	403	PLC	O2-C'-C1'-C2'
4	E	403	PLC	O2-C'-C1'-C2'
4	C	404	PLC	C1'-C2'-C3'-C4'
4	B	403	PLC	O2-C'-C1'-C2'
4	C	404	PLC	O2-C'-C1'-C2'
4	B	403	PLC	C1'-C2'-C3'-C4'
4	A	403	PLC	O2-C'-C1'-C2'
4	A	404	PLC	C8'-C9'-CA'-CB'
2	E	401	LMT	C1-C2-C3-C4
4	B	403	PLC	O'-C'-C1'-C2'
4	D	403	PLC	O'-C'-C1'-C2'
4	C	404	PLC	O'-C'-C1'-C2'

*Continued on next page...*

*Continued from previous page...*

Mol	Chain	Res	Type	Atoms
4	E	403	PLC	O'-C'-C1'-C2'
4	A	403	PLC	O'-C'-C1'-C2'
2	D	401	LMT	C1-C2-C3-C4
2	B	401	LMT	C7-C8-C9-C10
2	A	401	LMT	C1-C2-C3-C4

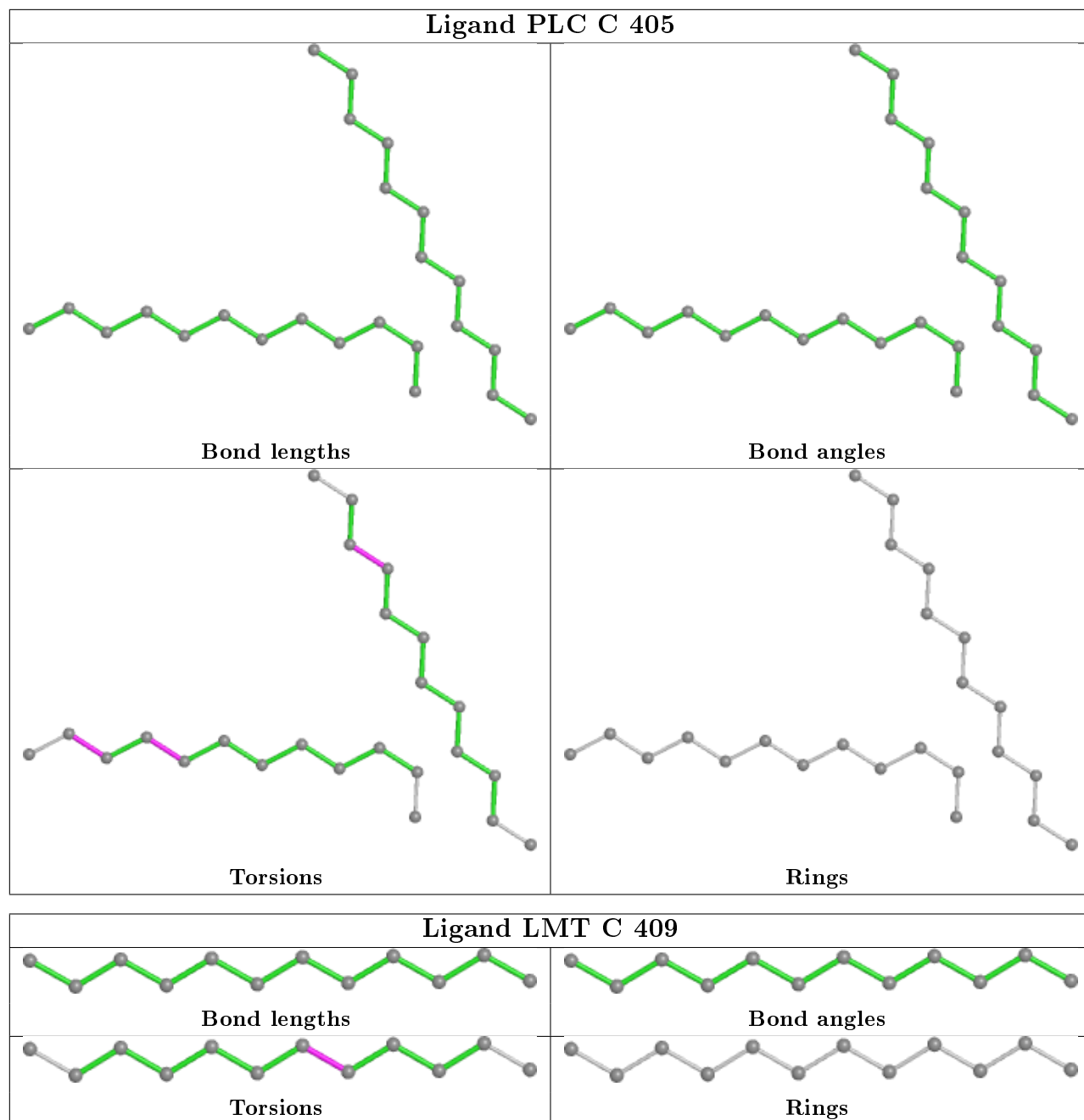
There are no ring outliers.

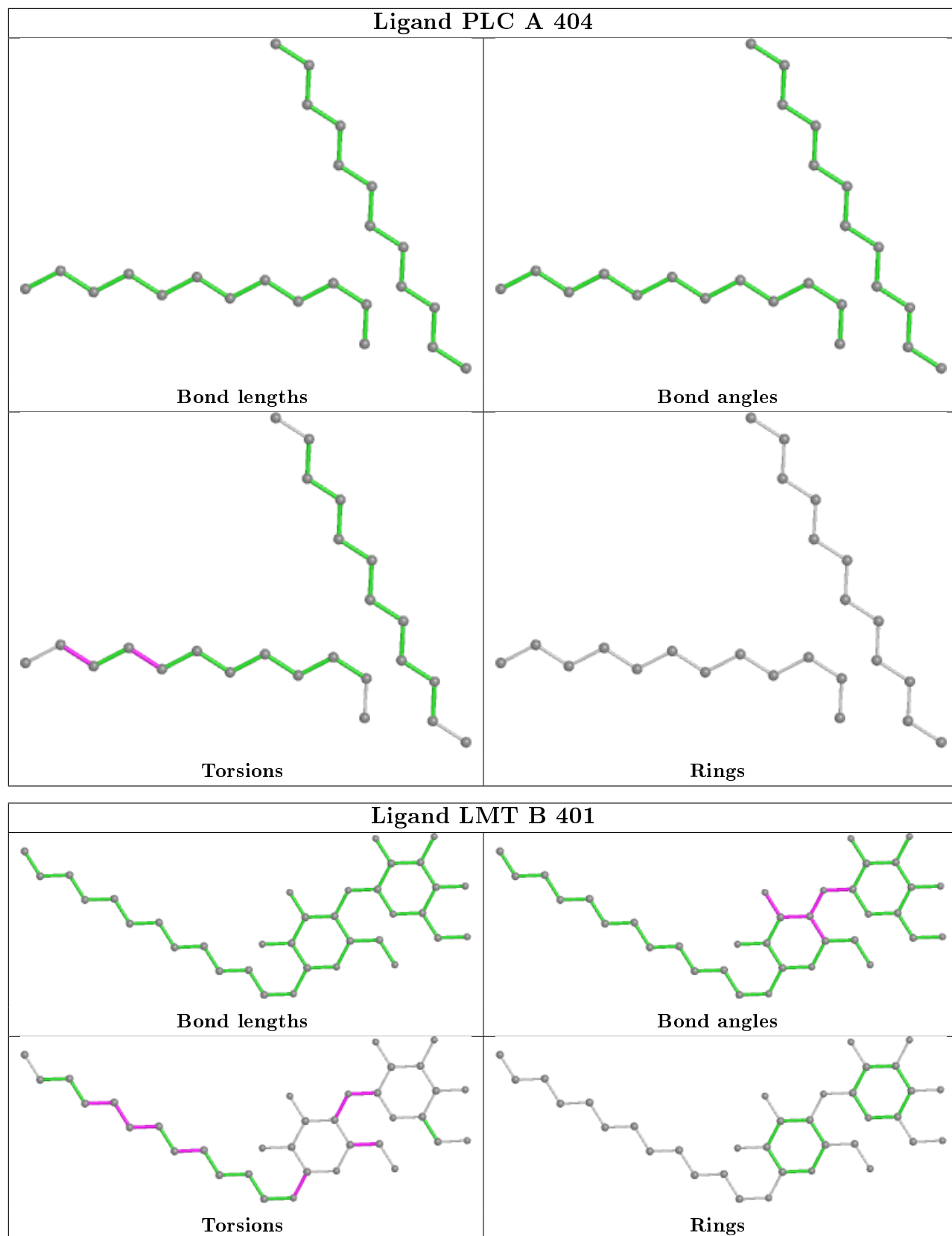
18 monomers are involved in 23 short contacts:

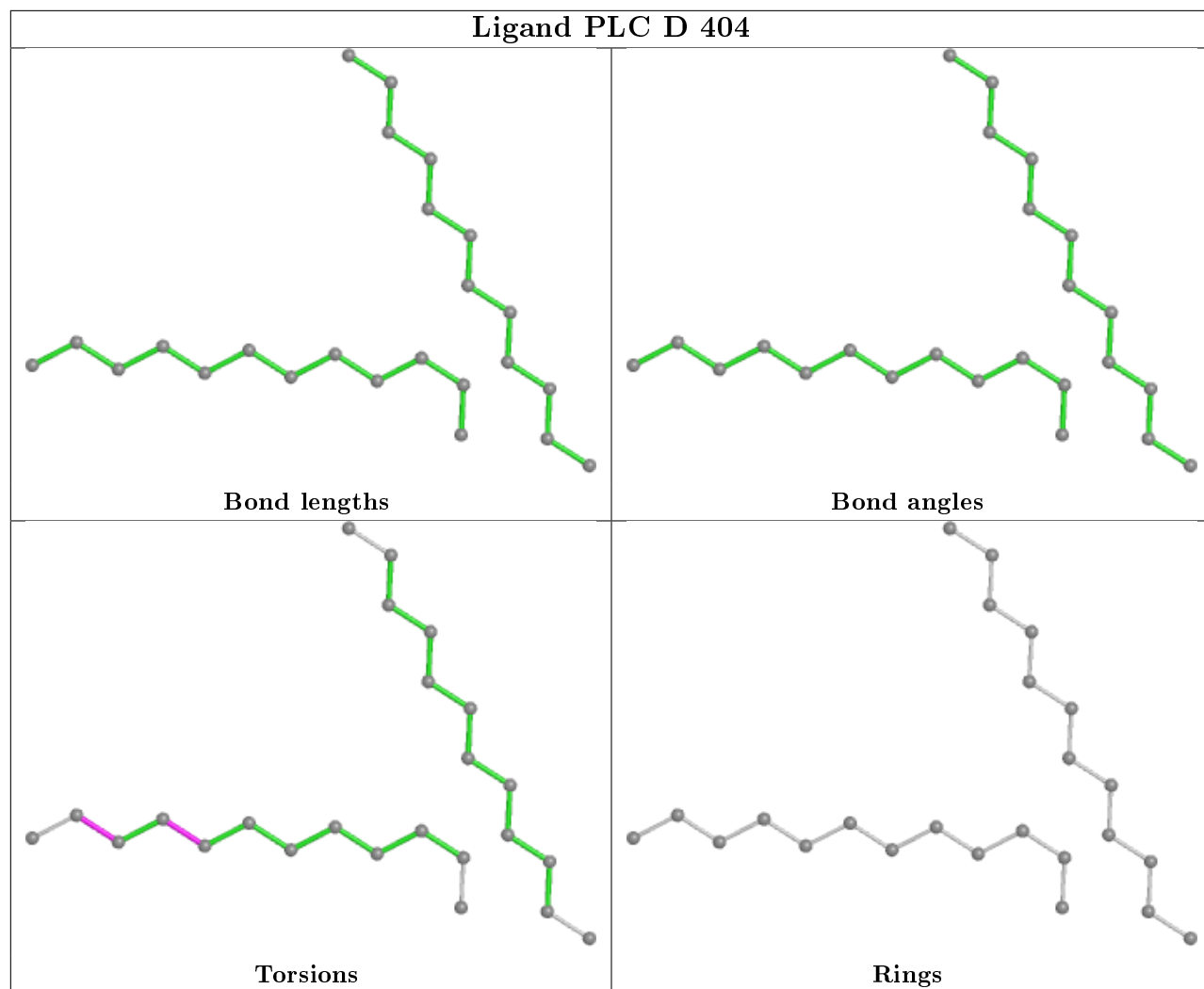
Mol	Chain	Res	Type	Clashes	Symm-Clashes
2	A	411	LMT	2	0
4	C	405	PLC	1	0
4	A	404	PLC	1	0
2	B	401	LMT	1	0
4	D	404	PLC	1	0
4	E	404	PLC	1	0
2	C	401	LMT	2	0
2	E	401	LMT	1	0
4	B	404	PLC	1	0
4	B	403	PLC	2	0
3	A	410	ACT	1	0
2	D	401	LMT	1	0
4	D	403	PLC	2	0
2	C	402	LMT	1	0
4	A	403	PLC	2	0
4	E	403	PLC	2	0
4	C	404	PLC	2	0
2	A	401	LMT	1	0

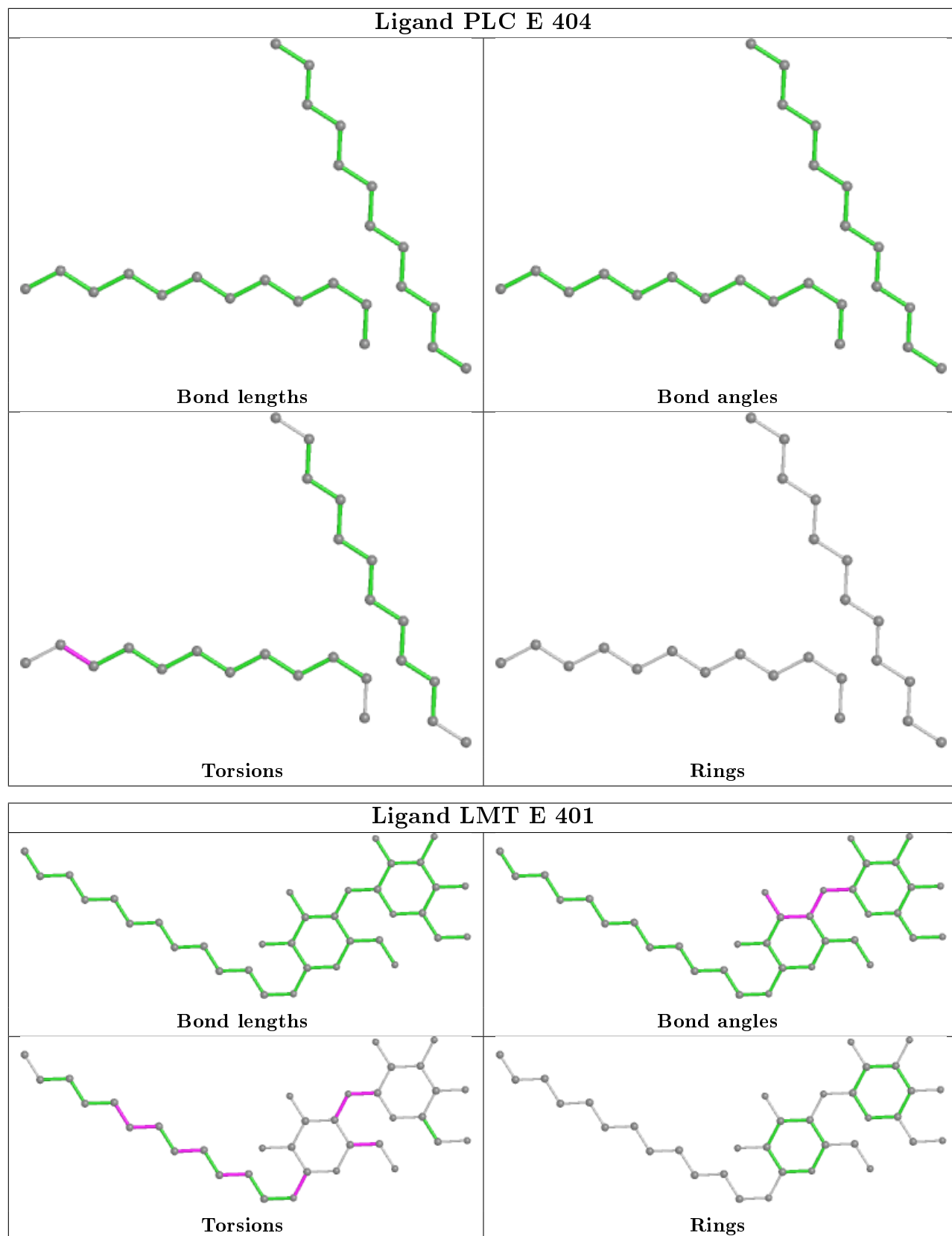
The following is a two-dimensional graphical depiction of Mogul quality analysis of bond lengths, bond angles, torsion angles, and ring geometry for all instances of the Ligand of Interest. In addition, ligands with molecular weight > 250 and outliers as shown on the validation Tables will also be included. For torsion angles, if less than 5% of the Mogul distribution of torsion angles is within 10 degrees of the torsion angle in question, then that torsion angle is considered an outlier. Any bond that is central to one or more torsion angles identified as an outlier by Mogul will be highlighted in the graph. For rings, the root-mean-square deviation (RMSD) between the ring in question and similar rings identified by Mogul is calculated over all ring torsion angles. If the average RMSD is greater than 60 degrees and the minimal RMSD between the ring in question and any Mogul-identified rings is also greater than 60 degrees, then that ring is considered an outlier. The outliers are highlighted in purple. The color gray indicates Mogul did not find sufficient equivalents in the CSD to analyse the geometry.

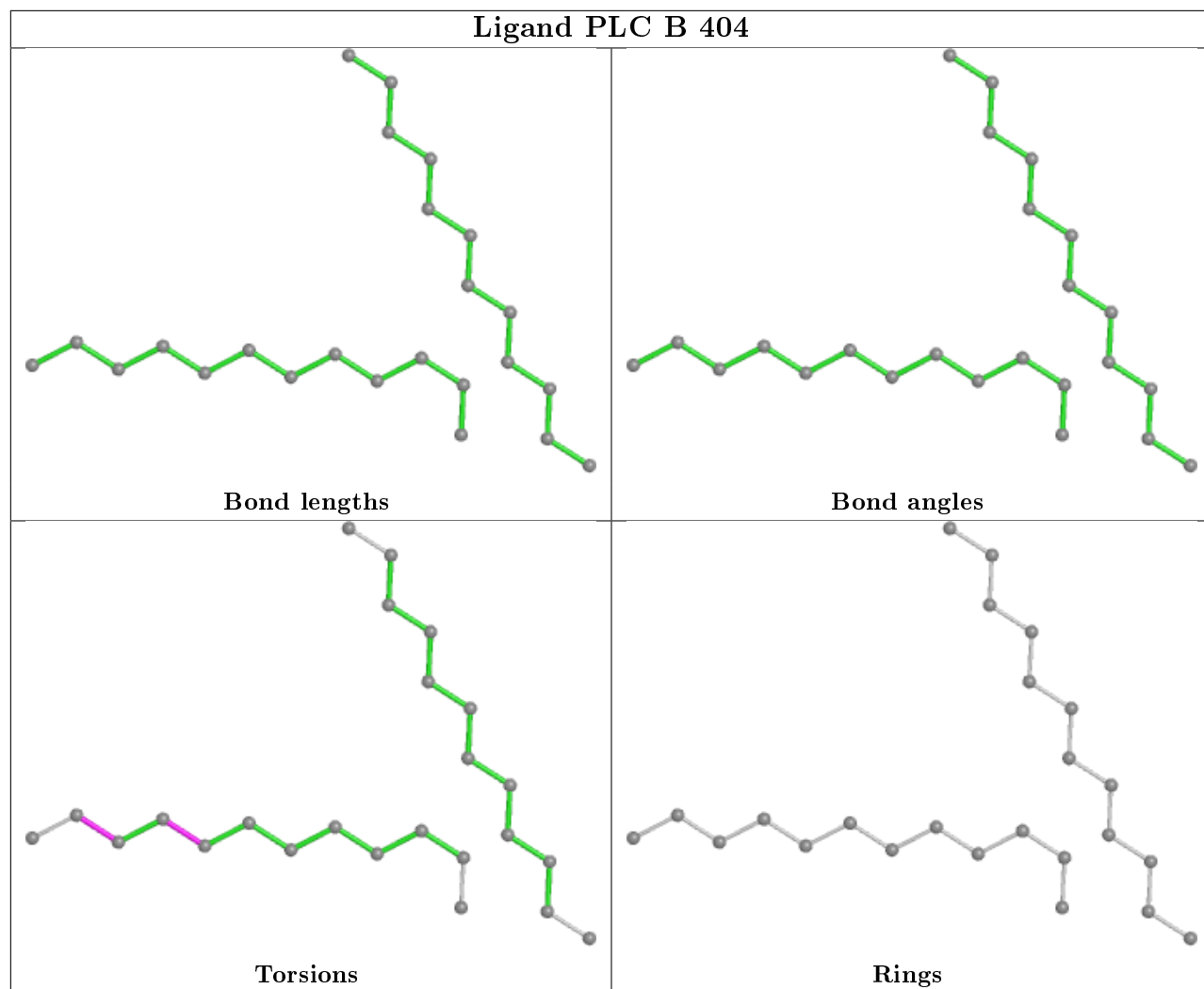


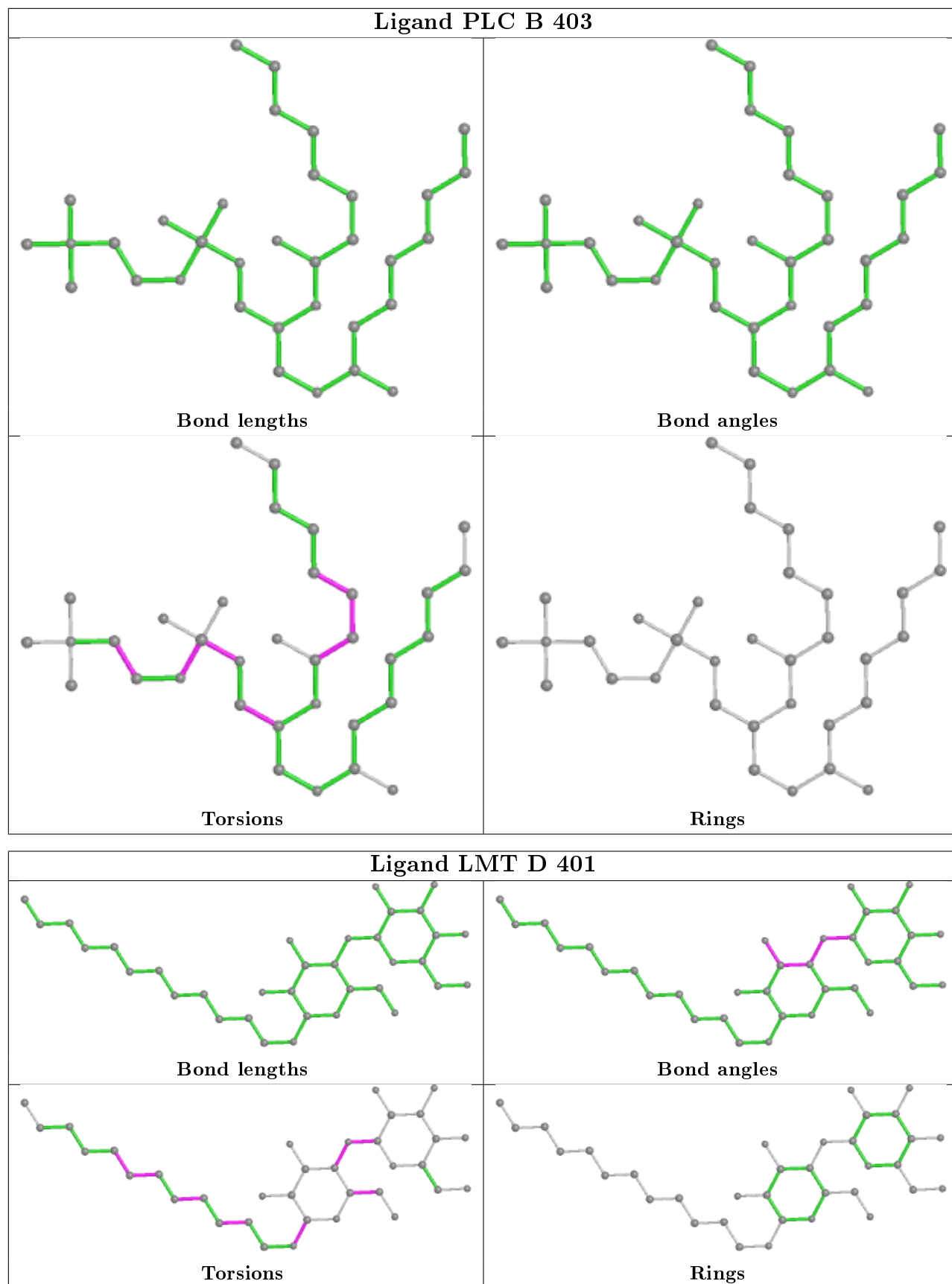


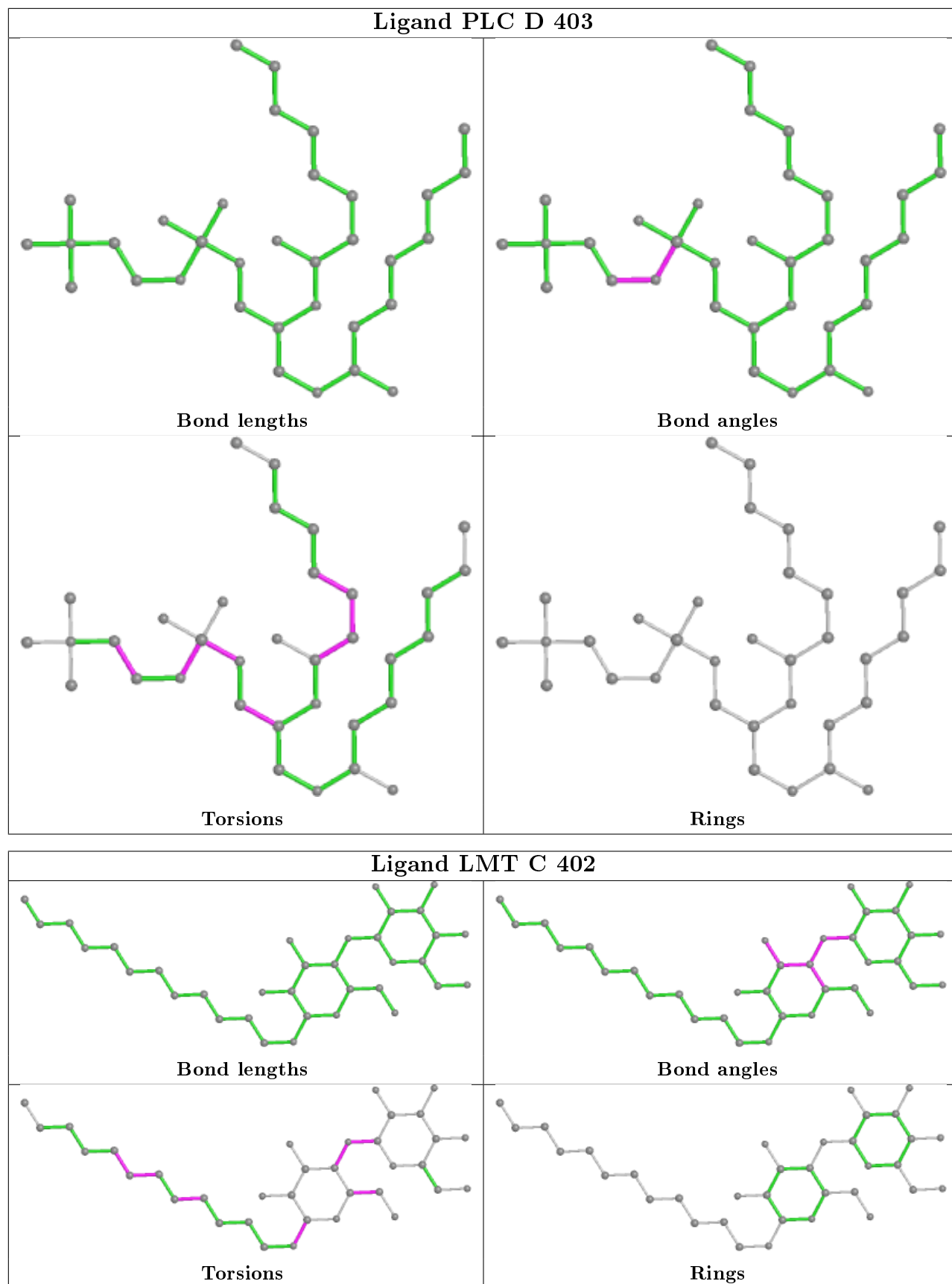


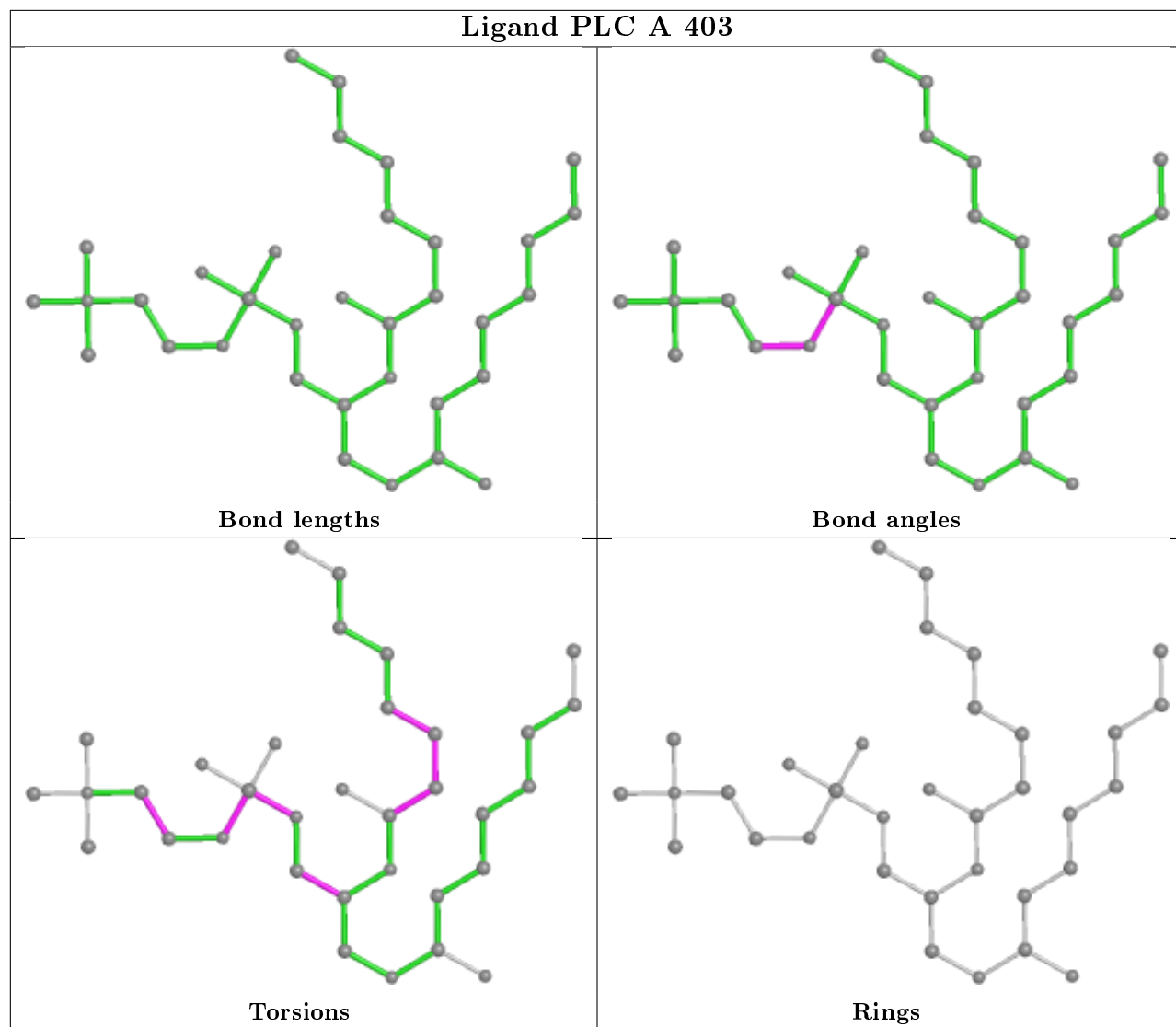




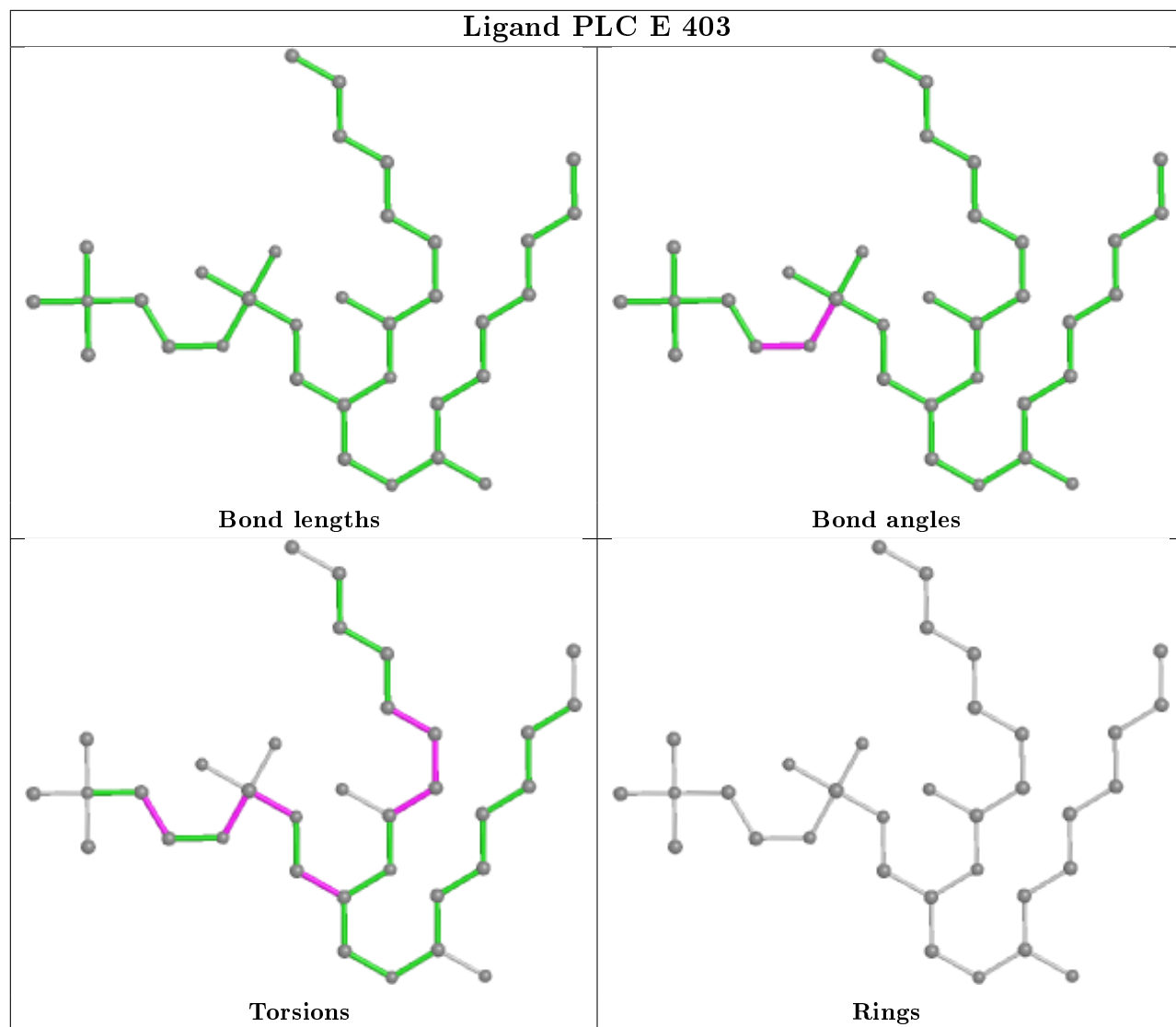


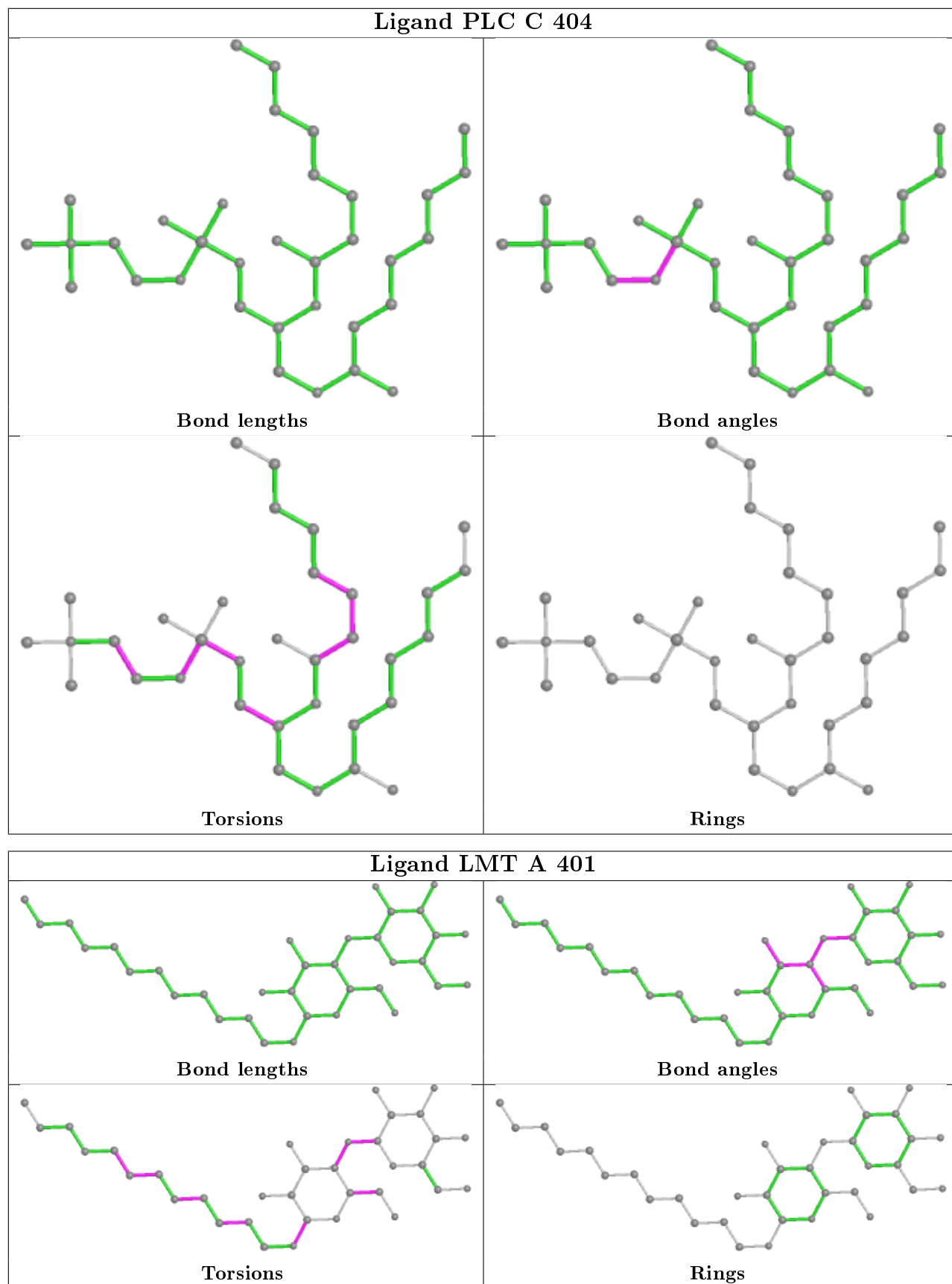












## 5.7 Other polymers [i](#)

There are no such residues in this entry.

## 5.8 Polymer linkage issues [i](#)

The following chains have linkage breaks:

Mol	Chain	Number of breaks
1	A	2
1	D	2

All chain breaks are listed below:

Model	Chain	Residue-1	Atom-1	Residue-2	Atom-2	Distance (Å)
1	A	12:ALA	C	13:ASP	N	1.73
1	D	11:ILE	C	12:ALA	N	1.64
1	D	12:ALA	C	13:ASP	N	1.10
1	A	11:ILE	C	12:ALA	N	1.04

## 6 Fit of model and data [i](#)

### 6.1 Protein, DNA and RNA chains [i](#)

In the following table, the column labelled ‘#RSRZ> 2’ contains the number (and percentage) of RSRZ outliers, followed by percent RSRZ outliers for the chain as percentile scores relative to all X-ray entries and entries of similar resolution. The OWAB column contains the minimum, median, 95<sup>th</sup> percentile and maximum values of the occupancy-weighted average B-factor per residue. The column labelled ‘Q< 0.9’ lists the number of (and percentage) of residues with an average occupancy less than 0.9.

Mol	Chain	Analysed	<RSRZ>	#RSRZ>2	OWAB(Å <sup>2</sup> )	Q<0.9
1	A	311/317 (98%)	-0.58	5 (1%) 72 66	26, 40, 74, 115	0
1	B	311/317 (98%)	-0.59	3 (0%) 82 77	25, 40, 72, 91	0
1	C	311/317 (98%)	-0.54	8 (2%) 56 46	24, 40, 76, 127	0
1	D	311/317 (98%)	-0.57	4 (1%) 77 72	24, 40, 77, 133	0
1	E	311/317 (98%)	-0.53	3 (0%) 82 77	24, 41, 75, 119	0
All	All	1555/1585 (98%)	-0.56	23 (1%) 73 68	24, 40, 74, 133	0

All (23) RSRZ outliers are listed below:

Mol	Chain	Res	Type	RSRZ
1	C	58	ARG	5.6
1	E	58	ARG	5.2
1	A	57	VAL	4.5
1	E	13	ASP	4.4
1	D	57	VAL	4.0
1	D	12	ALA	3.9
1	B	13	ASP	3.6
1	C	13	ASP	3.6
1	A	11	ILE	3.4
1	E	12	ALA	3.2
1	C	12	ALA	3.0
1	A	12	ALA	2.9
1	C	57	VAL	2.7
1	D	60	GLY	2.6
1	C	11	ILE	2.6
1	D	11	ILE	2.5
1	C	178	ASP	2.5
1	B	12	ALA	2.3
1	A	58	ARG	2.3
1	B	154	ASP	2.2

*Continued on next page...*

*Continued from previous page...*

Mol	Chain	Res	Type	RSRZ
1	C	59	SER	2.1
1	C	62	ARG	2.0
1	A	154	ASP	2.0

## 6.2 Non-standard residues in protein, DNA, RNA chains [i](#)

There are no non-standard protein/DNA/RNA residues in this entry.

## 6.3 Carbohydrates [i](#)

There are no carbohydrates in this entry.

## 6.4 Ligands [i](#)

In the following table, the Atoms column lists the number of modelled atoms in the group and the number defined in the chemical component dictionary. The B-factors column lists the minimum, median, 95<sup>th</sup> percentile and maximum values of B factors of atoms in the group. The column labelled 'Q< 0.9' lists the number of atoms with occupancy less than 0.9.

Mol	Type	Chain	Res	Atoms	RSCC	RSR	B-factors(Å <sup>2</sup> )	Q<0.9
4	PLC	B	403	34/42	0.64	0.38	43,83,133,134	0
4	PLC	A	403	34/42	0.65	0.33	25,79,128,129	0
4	PLC	E	403	34/42	0.66	0.33	39,85,133,135	0
4	PLC	C	404	34/42	0.68	0.33	32,77,129,131	0
4	PLC	D	403	34/42	0.72	0.28	30,73,118,119	0
4	PLC	B	404	24/42	0.76	0.33	45,57,62,63	0
6	NA	B	406	1/1	0.77	0.17	42,42,42,42	0
4	PLC	A	404	24/42	0.78	0.33	40,53,62,63	0
4	PLC	C	405	24/42	0.79	0.28	41,47,56,56	0
4	PLC	E	404	24/42	0.81	0.30	32,46,48,48	0
4	PLC	D	404	24/42	0.81	0.30	27,48,59,60	0
6	NA	E	406	1/1	0.83	0.15	54,54,54,54	0
6	NA	D	406	1/1	0.84	0.27	80,80,80,80	0
2	LMT	E	408	12/35	0.84	0.20	27,31,40,43	0
2	LMT	D	408	12/35	0.85	0.18	24,31,41,41	0
2	LMT	E	401	35/35	0.85	0.25	31,62,78,79	0
2	LMT	A	411	12/35	0.86	0.17	28,35,50,50	0
6	NA	A	408	1/1	0.87	0.12	47,47,47,47	0
2	LMT	D	401	35/35	0.87	0.22	29,57,75,78	0
2	LMT	A	401	35/35	0.87	0.22	27,55,77,79	0

*Continued on next page...*

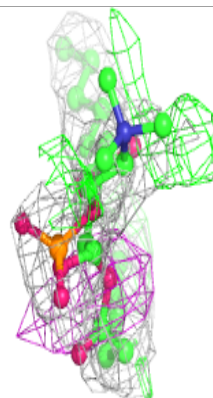
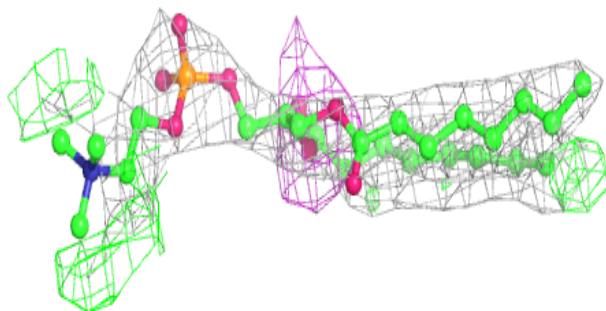
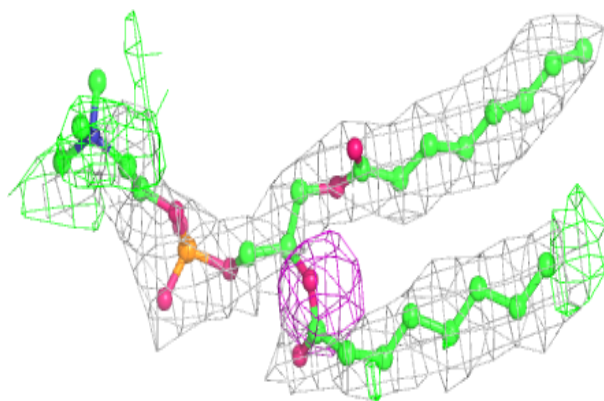
*Continued from previous page...*

Mol	Type	Chain	Res	Atoms	RSCC	RSR	B-factors( $\text{\AA}^2$ )	Q<0.9
2	LMT	B	401	35/35	0.88	0.22	32,57,80,82	0
2	LMT	C	402	35/35	0.89	0.20	31,55,74,76	0
6	NA	A	409	1/1	0.90	0.29	54,54,54,54	0
2	LMT	C	401	12/35	0.90	0.21	35,55,68,69	0
5	CL	A	407	1/1	0.90	0.10	61,61,61,61	0
2	LMT	B	408	12/35	0.91	0.14	26,34,38,41	0
2	LMT	C	409	12/35	0.91	0.15	26,31,40,42	0
5	CL	A	406	1/1	0.91	0.24	66,66,66,66	0
5	CL	D	405	1/1	0.93	0.14	43,43,43,43	0
6	NA	C	407	1/1	0.93	0.11	51,51,51,51	0
3	ACT	C	403	4/4	0.94	0.15	40,41,43,45	0
3	ACT	B	402	4/4	0.94	0.17	56,60,60,62	0
3	ACT	E	402	4/4	0.96	0.14	40,45,46,46	0
3	ACT	A	410	4/4	0.97	0.12	36,36,36,39	0
3	ACT	C	408	4/4	0.97	0.12	37,39,39,44	0
3	ACT	D	407	4/4	0.97	0.14	31,31,34,35	0
5	CL	C	406	1/1	0.97	0.05	42,42,42,42	0
3	ACT	E	407	4/4	0.97	0.12	38,40,41,46	0
3	ACT	D	402	4/4	0.97	0.13	39,43,44,47	0
5	CL	E	405	1/1	0.97	0.06	48,48,48,48	0
3	ACT	A	402	4/4	0.98	0.08	37,39,39,42	0
5	CL	B	405	1/1	0.98	0.04	40,40,40,40	0
3	ACT	B	407	4/4	0.98	0.13	34,36,37,40	0
5	CL	A	405	1/1	0.99	0.07	40,40,40,40	0

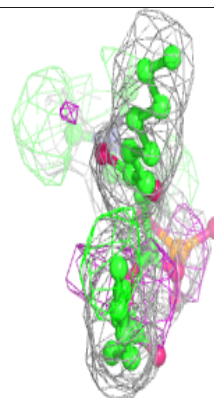
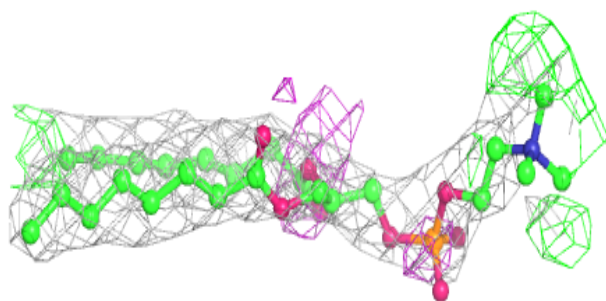
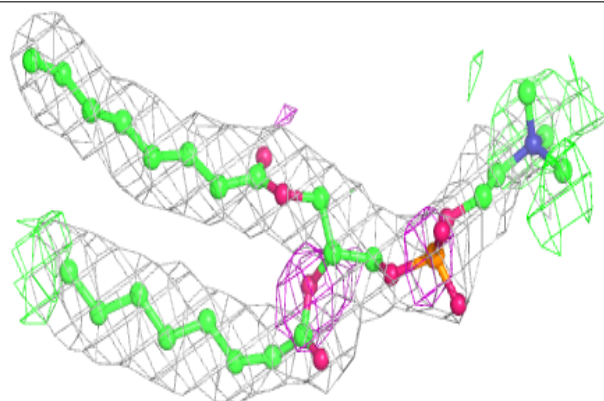
The following is a graphical depiction of the model fit to experimental electron density of all instances of the Ligand of Interest. In addition, ligands with molecular weight > 250 and outliers as shown on the geometry validation Tables will also be included. Each fit is shown from different orientation to approximate a three-dimensional view.

**Electron density around PLC B 403:**

$2mF_o-DF_c$  (at 0.7 rmsd) in gray  
 $mF_o-DF_c$  (at 3 rmsd) in purple (negative)  
and green (positive)

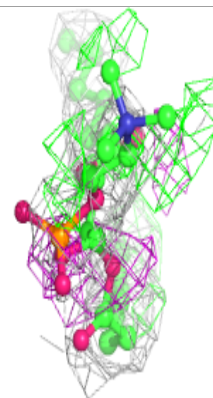
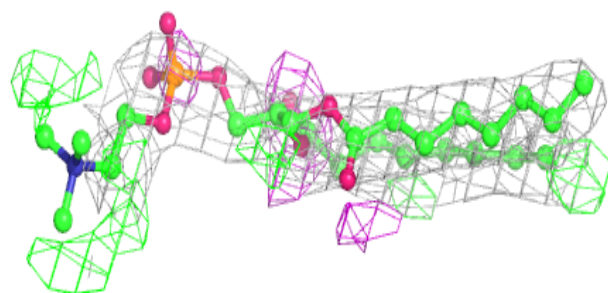
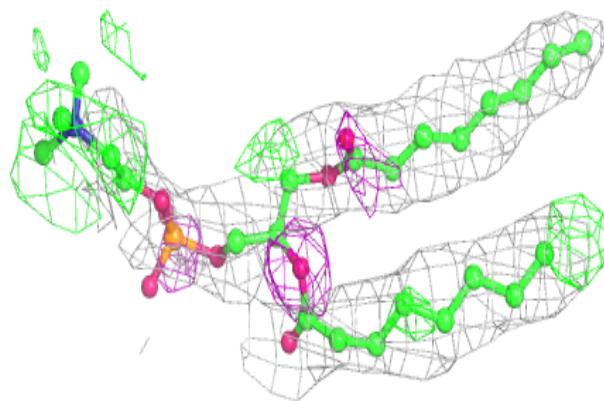
**Electron density around PLC A 403:**

$2mF_o-DF_c$  (at 0.7 rmsd) in gray  
 $mF_o-DF_c$  (at 3 rmsd) in purple (negative)  
and green (positive)

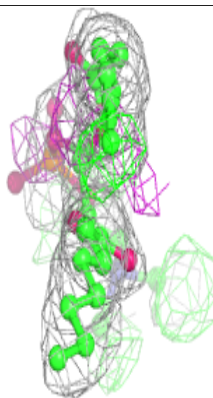
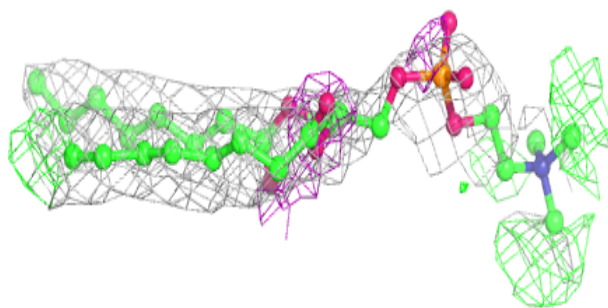
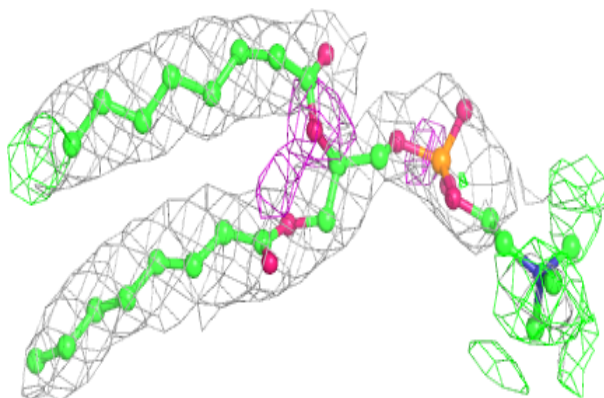


**Electron density around PLC E 403:**

$2mF_o-DF_c$  (at 0.7 rmsd) in gray  
 $mF_o-DF_c$  (at 3 rmsd) in purple (negative)  
and green (positive)

**Electron density around PLC C 404:**

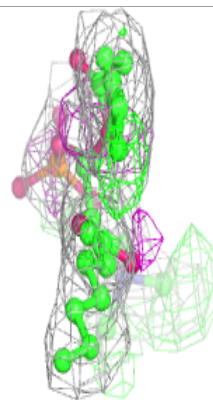
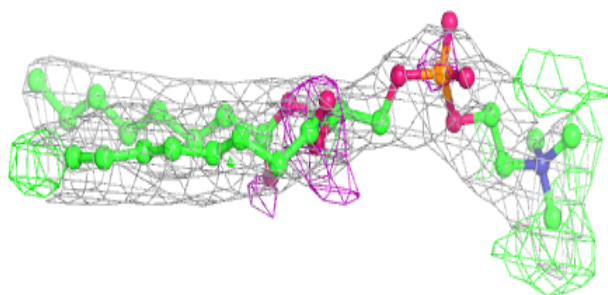
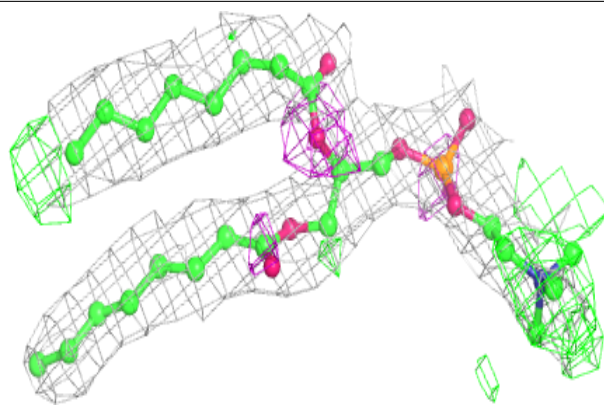
$2mF_o-DF_c$  (at 0.7 rmsd) in gray  
 $mF_o-DF_c$  (at 3 rmsd) in purple (negative)  
and green (positive)



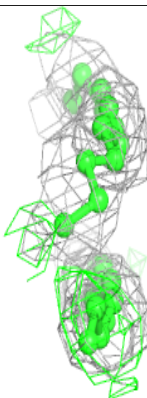
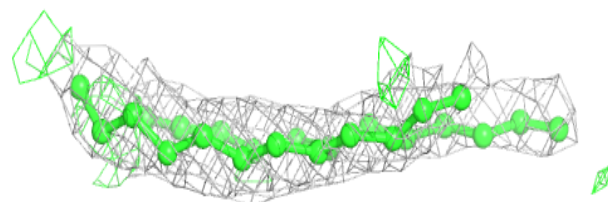
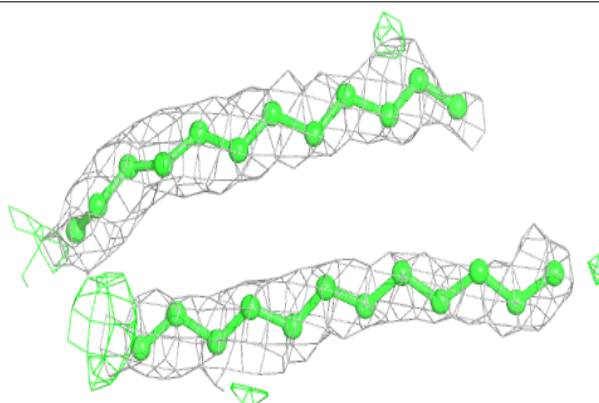


**Electron density around PLC D 403:**

$2mF_o-DF_c$  (at 0.7 rmsd) in gray  
 $mF_o-DF_c$  (at 3 rmsd) in purple (negative)  
and green (positive)

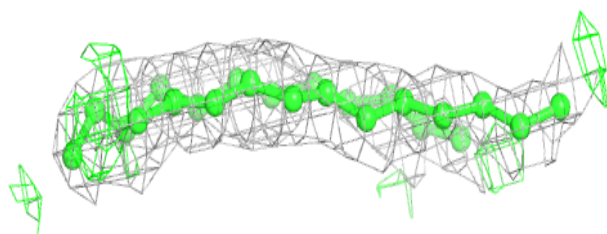
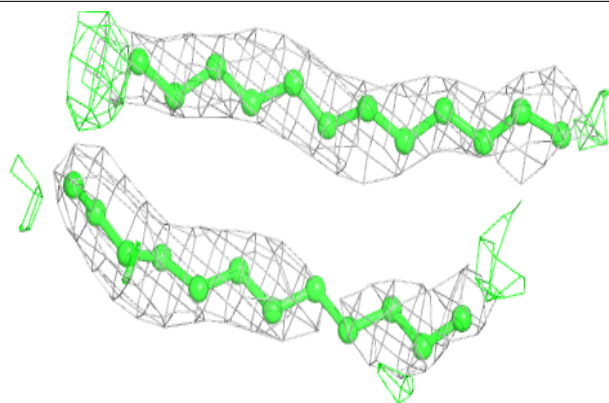
**Electron density around PLC B 404:**

$2mF_o-DF_c$  (at 0.7 rmsd) in gray  
 $mF_o-DF_c$  (at 3 rmsd) in purple (negative)  
and green (positive)

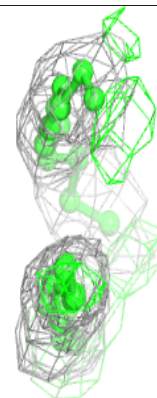
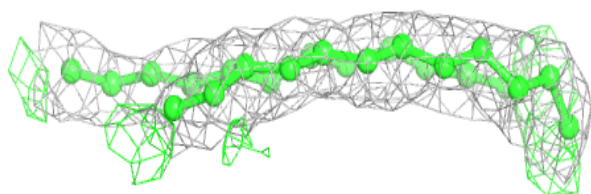
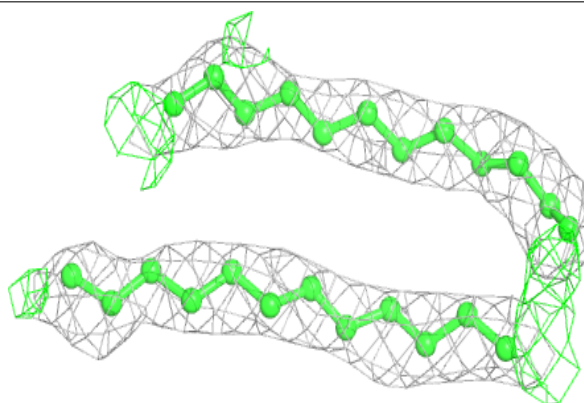


**Electron density around PLC A 404:**

$2mF_o-DF_c$  (at 0.7 rmsd) in gray  
 $mF_o-DF_c$  (at 3 rmsd) in purple (negative)  
and green (positive)

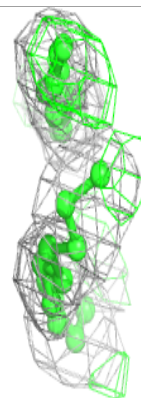
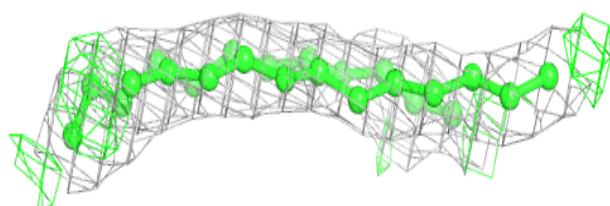
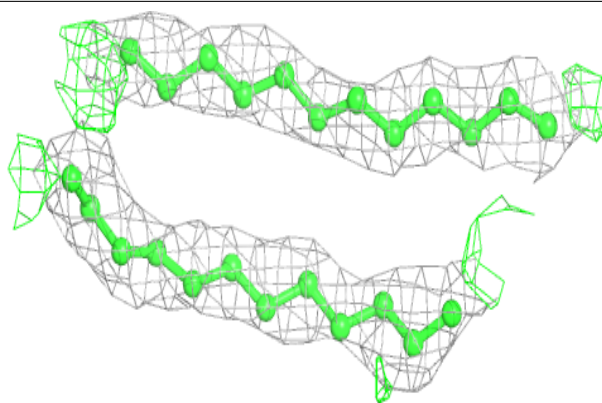
**Electron density around PLC C 405:**

$2mF_o-DF_c$  (at 0.7 rmsd) in gray  
 $mF_o-DF_c$  (at 3 rmsd) in purple (negative)  
and green (positive)

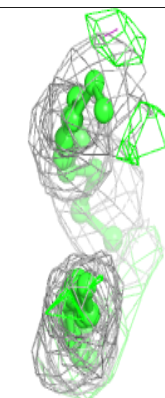
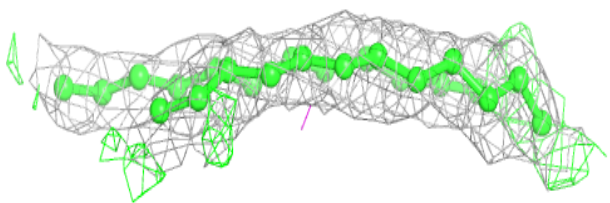
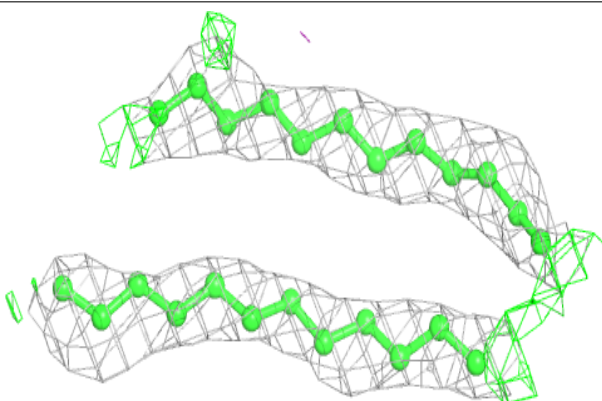


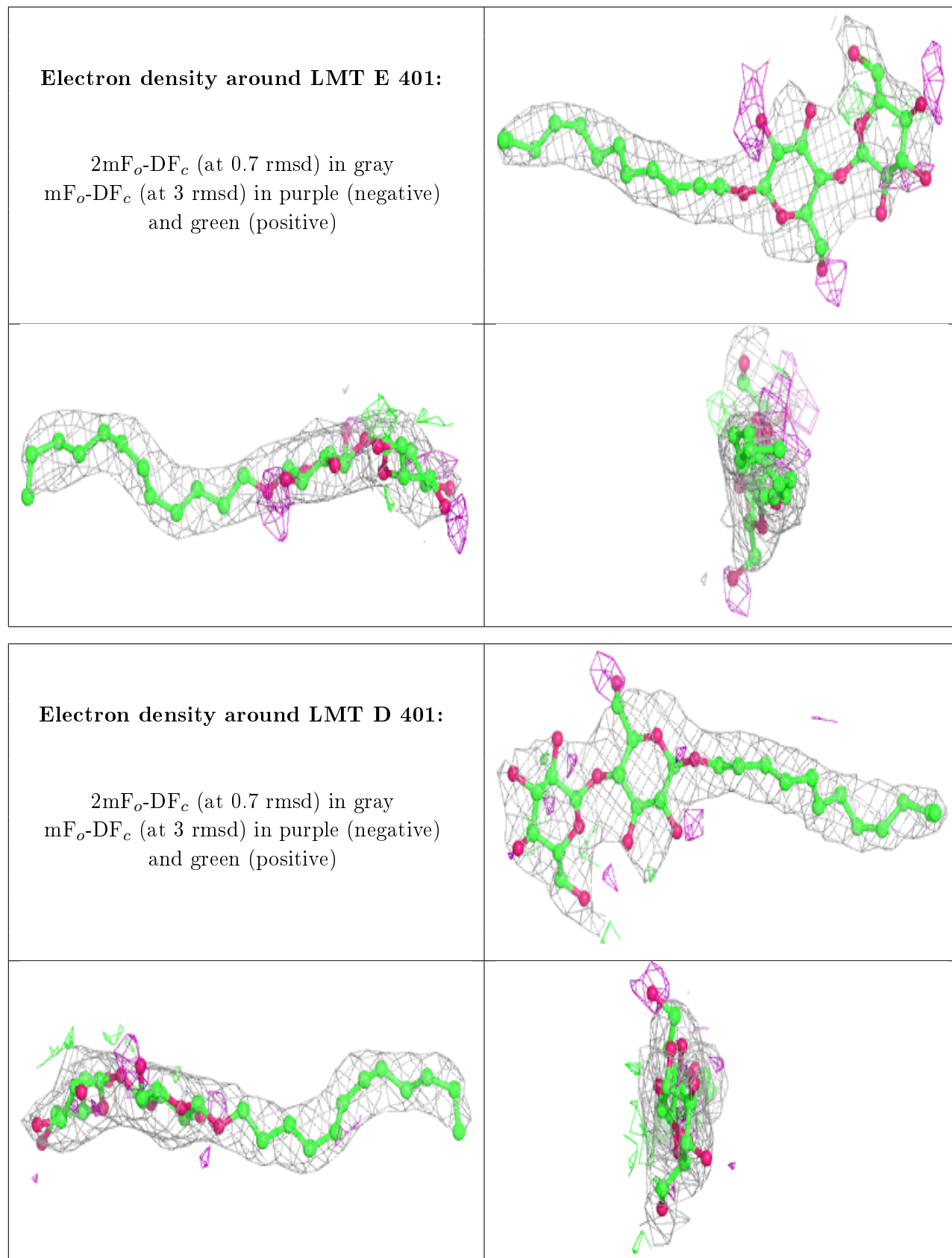
**Electron density around PLC E 404:**

$2mF_o-DF_c$  (at 0.7 rmsd) in gray  
 $mF_o-DF_c$  (at 3 rmsd) in purple (negative)  
and green (positive)

**Electron density around PLC D 404:**

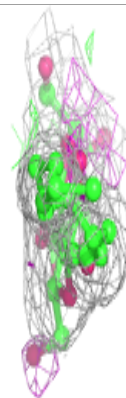
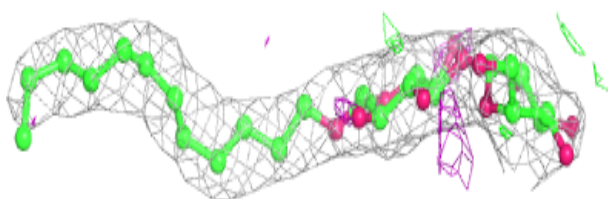
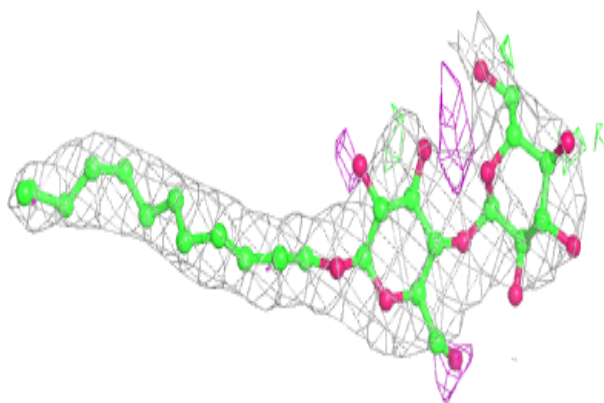
$2mF_o-DF_c$  (at 0.7 rmsd) in gray  
 $mF_o-DF_c$  (at 3 rmsd) in purple (negative)  
and green (positive)



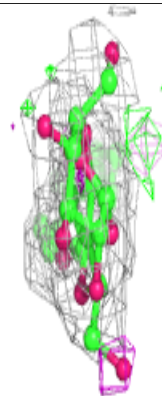
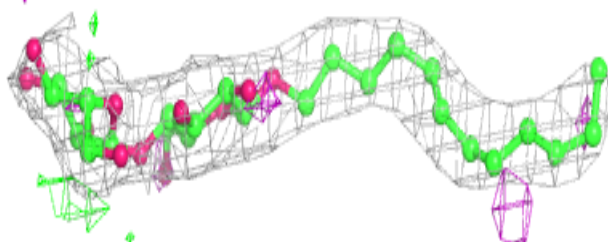
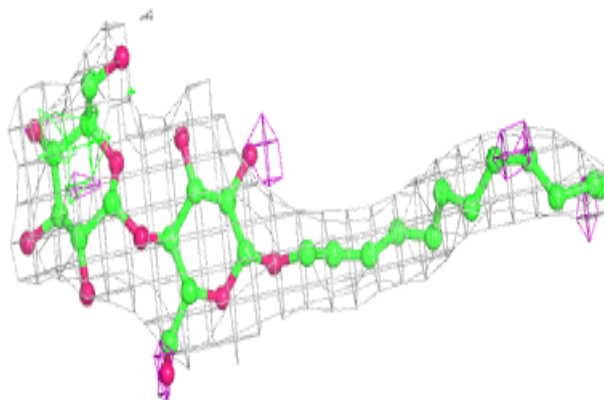


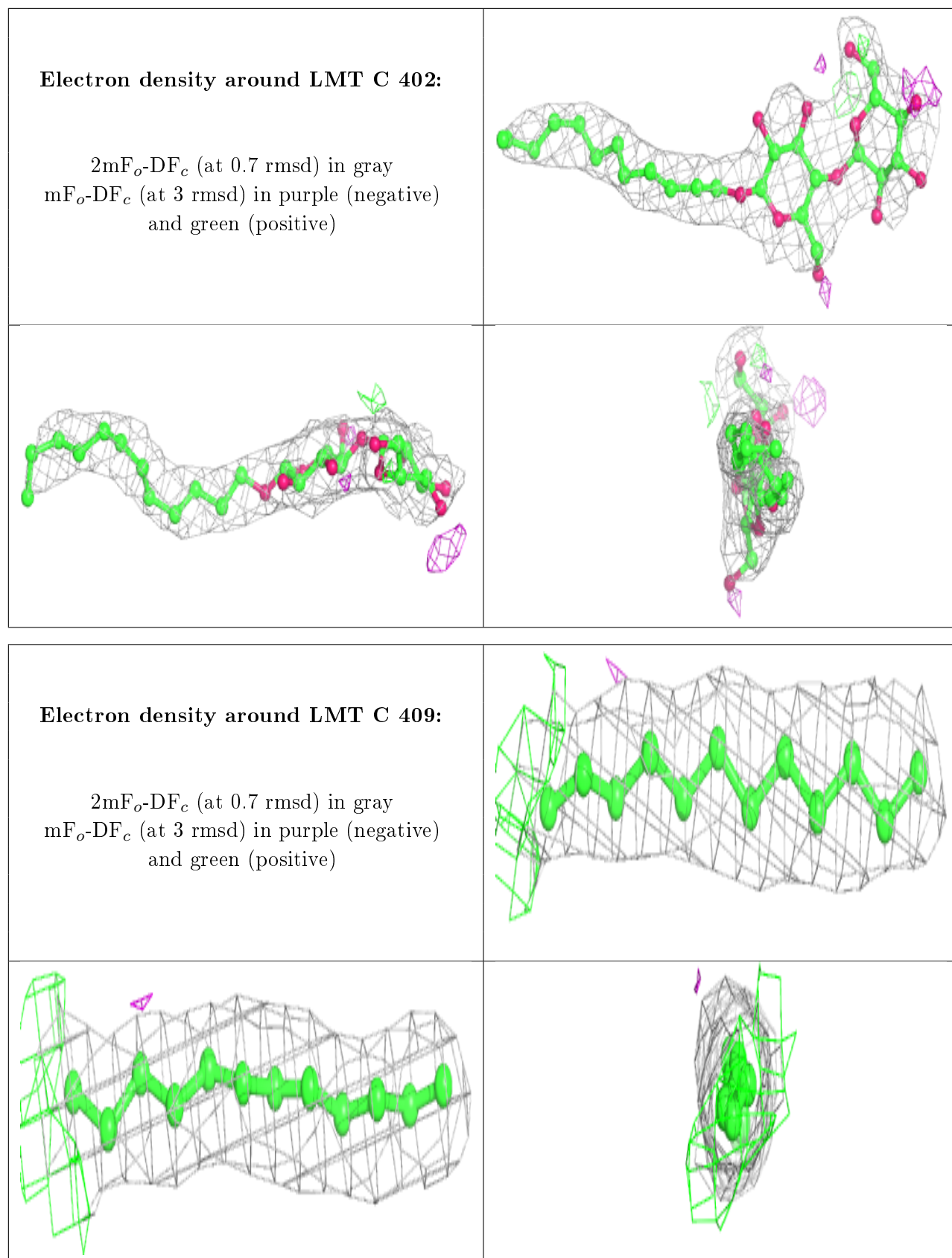
**Electron density around LMT A 401:**

$2mF_o-DF_c$  (at 0.7 rmsd) in gray  
 $mF_o-DF_c$  (at 3 rmsd) in purple (negative)  
and green (positive)

**Electron density around LMT B 401:**

$2mF_o-DF_c$  (at 0.7 rmsd) in gray  
 $mF_o-DF_c$  (at 3 rmsd) in purple (negative)  
and green (positive)





## 6.5 Other polymers

There are no such residues in this entry.