



# Full wwPDB X-ray Structure Validation Report ⓘ

Aug 6, 2020 – 10:50 AM BST

PDB ID : 6HZG  
Title : BP0997, GH138 enzyme targeting pectin rhamnogalacturonan II  
Authors : Basle, A.; Cartmell, A.; Labourel, A.; Gilbert, H.  
Deposited on : 2018-10-23  
Resolution : 1.60 Å(reported)

This is a Full wwPDB X-ray Structure Validation Report for a publicly released PDB entry.

We welcome your comments at [validation@mail.wwpdb.org](mailto:validation@mail.wwpdb.org)

A user guide is available at

<https://www.wwpdb.org/validation/2017/XrayValidationReportHelp>

with specific help available everywhere you see the ⓘ symbol.

---

The following versions of software and data (see [references ⓘ](#)) were used in the production of this report:

MolProbity : 4.02b-467  
Mogul : 1.8.5 (274361), CSD as541be (2020)  
Xtriage (Phenix) : 1.13  
EDS : 2.13.1  
Percentile statistics : 20191225.v01 (using entries in the PDB archive December 25th 2019)  
Refmac : 5.8.0158  
CCP4 : 7.0.044 (Gargrove)  
Ideal geometry (proteins) : Engh & Huber (2001)  
Ideal geometry (DNA, RNA) : Parkinson et al. (1996)  
Validation Pipeline (wwPDB-VP) : 2.13.1

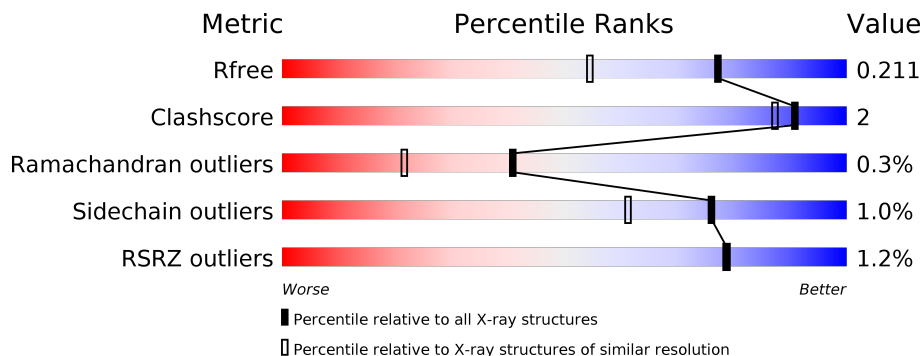
# 1 Overall quality at a glance

The following experimental techniques were used to determine the structure:

*X-RAY DIFFRACTION*

The reported resolution of this entry is 1.60 Å.

Percentile scores (ranging between 0-100) for global validation metrics of the entry are shown in the following graphic. The table shows the number of entries on which the scores are based.



Metric	Whole archive (#Entries)	Similar resolution (#Entries, resolution range(Å))
$R_{free}$	130704	3398 (1.60-1.60)
Clashscore	141614	3665 (1.60-1.60)
Ramachandran outliers	138981	3564 (1.60-1.60)
Sidechain outliers	138945	3563 (1.60-1.60)
RSRZ outliers	127900	3321 (1.60-1.60)

The table below summarises the geometric issues observed across the polymeric chains and their fit to the electron density. The red, orange, yellow and green segments on the lower bar indicate the fraction of residues that contain outliers for  $\geq 3$ , 2, 1 and 0 types of geometric quality criteria respectively. A grey segment represents the fraction of residues that are not modelled. The numeric value for each fraction is indicated below the corresponding segment, with a dot representing fractions  $\leq 5\%$ . The upper red bar (where present) indicates the fraction of residues that have poor fit to the electron density. The numeric value is given above the bar.

Mol	Chain	Length	Quality of chain
1	A	893	

## 2 Entry composition [i](#)

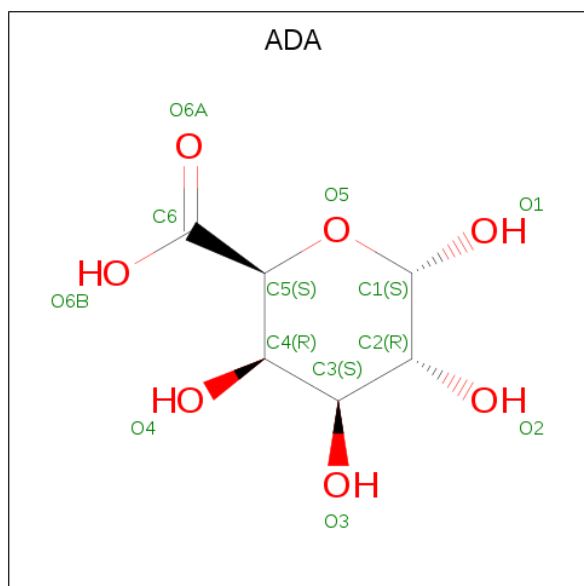
There are 6 unique types of molecules in this entry. The entry contains 6440 atoms, of which 0 are hydrogens and 0 are deuteriums.

In the tables below, the ZeroOcc column contains the number of atoms modelled with zero occupancy, the AltConf column contains the number of residues with at least one atom in alternate conformation and the Trace column contains the number of residues modelled with at most 2 atoms.

- Molecule 1 is a protein called BPa0997 N-ter E361S.

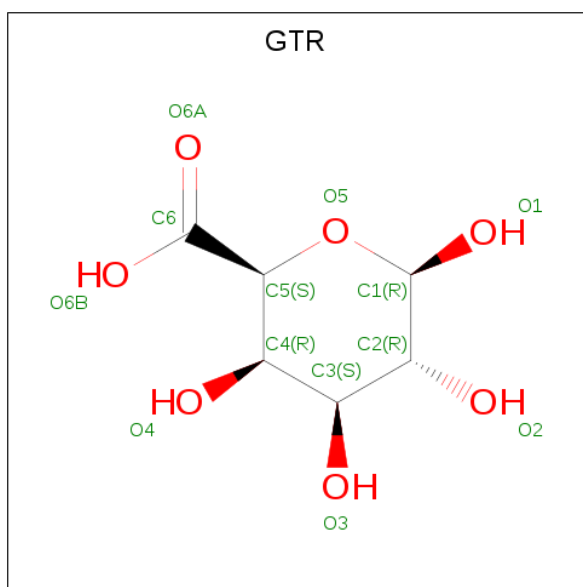
Mol	Chain	Residues	Atoms					ZeroOcc	AltConf	Trace
			Total	C	N	O	S			
1	A	694	5630	3627	938	1037	28	0	8	0

- Molecule 2 is alpha-D-galactopyranuronic acid (three-letter code: ADA) (formula: C<sub>6</sub>H<sub>10</sub>O<sub>7</sub>).



Mol	Chain	Residues	Atoms			ZeroOcc	AltConf
			Total	C	O		
2	A	1	13	6	7	0	1

- Molecule 3 is beta-D-galactopyranuronic acid (three-letter code: GTR) (formula: C<sub>6</sub>H<sub>10</sub>O<sub>7</sub>).



Mol	Chain	Residues	Atoms	ZeroOcc	AltConf
3	A	1	Total C O 13 6 7	0	1
3	A	1	Total C O 13 6 7	0	0

- Molecule 4 is CHLORIDE ION (three-letter code: CL) (formula: Cl).

Mol	Chain	Residues	Atoms	ZeroOcc	AltConf
4	A	1	Total Cl 1 1	0	0

- Molecule 5 is SODIUM ION (three-letter code: NA) (formula: Na).

Mol	Chain	Residues	Atoms	ZeroOcc	AltConf
5	A	1	Total Na 1 1	0	0

- Molecule 6 is water.

Mol	Chain	Residues	Atoms	ZeroOcc	AltConf
6	A	769	Total O 769 769	0	0



## 4 Data and refinement statistics

Property	Value	Source
Space group	P 2 21 21	Depositor
Cell constants a, b, c, $\alpha$ , $\beta$ , $\gamma$	55.30Å 68.38Å 220.16Å 90.00° 90.00° 90.00°	Depositor
Resolution (Å)	55.10 – 1.60 55.04 – 1.60	Depositor EDS
% Data completeness (in resolution range)	90.3 (55.10-1.60) 90.3 (55.04-1.60)	Depositor EDS
$R_{merge}$	(Not available)	Depositor
$R_{sym}$	(Not available)	Depositor
$\langle I/\sigma(I) \rangle$ <sup>1</sup>	1.64 (at 1.60Å)	Xtrriage
Refinement program	REFMAC 5.8.0238	Depositor
R, $R_{free}$	0.154 , 0.205 0.166 , 0.211	Depositor DCC
$R_{free}$ test set	5047 reflections (5.03%)	wwPDB-VP
Wilson B-factor (Å <sup>2</sup> )	15.9	Xtrriage
Anisotropy	0.124	Xtrriage
Bulk solvent $k_{sol}$ (e/Å <sup>3</sup> ), $B_{sol}$ (Å <sup>2</sup> )	0.33 , 40.7	EDS
L-test for twinning <sup>2</sup>	$\langle  L  \rangle = 0.48$ , $\langle L^2 \rangle = 0.31$	Xtrriage
Estimated twinning fraction	No twinning to report.	Xtrriage
$F_o, F_c$ correlation	0.97	EDS
Total number of atoms	6440	wwPDB-VP
Average B, all atoms (Å <sup>2</sup> )	21.0	wwPDB-VP

Xtrriage's analysis on translational NCS is as follows: *The largest off-origin peak in the Patterson function is 4.20% of the height of the origin peak. No significant pseudotranslation is detected.*

<sup>1</sup>Intensities estimated from amplitudes.

<sup>2</sup>Theoretical values of  $\langle |L| \rangle$ ,  $\langle L^2 \rangle$  for acentric reflections are 0.5, 0.333 respectively for untwinned datasets, and 0.375, 0.2 for perfectly twinned datasets.

## 5 Model quality [i](#)

### 5.1 Standard geometry [i](#)

Bond lengths and bond angles in the following residue types are not validated in this section: NA, GTR, CL, ADA

The Z score for a bond length (or angle) is the number of standard deviations the observed value is removed from the expected value. A bond length (or angle) with  $|Z| > 5$  is considered an outlier worth inspection. RMSZ is the root-mean-square of all Z scores of the bond lengths (or angles).

Mol	Chain	Bond lengths		Bond angles	
		RMSZ	# Z  >5	RMSZ	# Z  >5
1	A	0.80	3/5789 (0.1%)	0.87	7/7856 (0.1%)

All (3) bond length outliers are listed below:

Mol	Chain	Res	Type	Atoms	Z	Observed(Å)	Ideal(Å)
1	A	697	GLU	CD-OE1	5.80	1.32	1.25
1	A	300	GLU	CD-OE1	5.20	1.31	1.25
1	A	653	GLU	CD-OE2	-5.19	1.20	1.25

All (7) bond angle outliers are listed below:

Mol	Chain	Res	Type	Atoms	Z	Observed(°)	Ideal(°)
1	A	471	ARG	NE-CZ-NH2	-7.50	116.55	120.30
1	A	369	ARG	CG-CD-NE	-6.75	97.62	111.80
1	A	117	ASP	CB-CG-OD1	-6.45	112.49	118.30
1	A	369	ARG	NE-CZ-NH2	-6.21	117.20	120.30
1	A	471	ARG	CG-CD-NE	-6.13	98.93	111.80
1	A	158	TYR	CB-CG-CD1	5.21	124.13	121.00
1	A	471	ARG	NE-CZ-NH1	5.13	122.86	120.30

There are no chirality outliers.

There are no planarity outliers.

### 5.2 Too-close contacts [i](#)

In the following table, the Non-H and H(model) columns list the number of non-hydrogen atoms and hydrogen atoms in the chain respectively. The H(added) column lists the number of hydrogen atoms added and optimized by MolProbity. The Clashes column lists the number of clashes within the asymmetric unit, whereas Symm-Clashes lists symmetry related clashes.

Mol	Chain	Non-H	H(model)	H(added)	Clashes	Symm-Clashes
1	A	5630	0	5395	18	0
2	A	13	0	9	0	0
3	A	26	0	18	1	0
4	A	1	0	0	0	0
5	A	1	0	0	0	0
6	A	769	0	0	5	1
All	All	6440	0	5422	19	1

The all-atom clashscore is defined as the number of clashes found per 1000 atoms (including hydrogen atoms). The all-atom clashscore for this structure is 2.

All (19) close contacts within the same asymmetric unit are listed below, sorted by their clash magnitude.

Atom-1	Atom-2	Interatomic distance (Å)	Clash overlap (Å)
1:A:711:GLU:OE1	6:A:1001:HOH:O	2.04	0.75
1:A:93:LYS:CB	6:A:1646:HOH:O	2.42	0.67
3:A:903:GTR:H2	6:A:1122:HOH:O	1.93	0.67
1:A:437:THR:HG21	1:A:452:ARG:HD3	1.82	0.61
1:A:647:LYS:HE2	6:A:1641:HOH:O	2.03	0.57
1:A:680:GLN:HG3	6:A:1650:HOH:O	2.10	0.52
1:A:333:ALA:HA	1:A:338:CYS:HB2	1.92	0.51
1:A:595:VAL:HG23	1:A:606:LEU:HD21	1.91	0.51
1:A:247:LYS:HB3	1:A:248:PRO:HD3	1.95	0.49
1:A:434:TRP:CD2	1:A:435:PRO:HA	2.48	0.48
1:A:511:LEU:HD21	1:A:518:GLU:HA	1.96	0.47
1:A:190:TRP:HA	1:A:239:MET:HB3	1.97	0.46
1:A:434:TRP:CG	1:A:435:PRO:HA	2.52	0.45
1:A:395:ASN:HB3	1:A:511:LEU:HD22	1.99	0.43
1:A:554:GLU:OE2	1:A:569:HIS:HA	2.19	0.43
1:A:346:LEU:HA	1:A:346:LEU:HD23	1.94	0.42
1:A:342:ILE:HG21	1:A:382:LEU:HD13	2.02	0.41
1:A:110:ARG:HD3	1:A:180:VAL:HG12	2.01	0.41
1:A:206:PHE:O	1:A:248:PRO:HB2	2.20	0.41

All (1) symmetry-related close contacts are listed below. The label for Atom-2 includes the symmetry operator and encoded unit-cell translations to be applied.

Atom-1	Atom-2	Interatomic distance (Å)	Clash overlap (Å)
6:A:1114:HOH:O	6:A:1114:HOH:O[2_597]	1.32	0.88



## 5.3 Torsion angles [i](#)

### 5.3.1 Protein backbone [i](#)

In the following table, the Percentiles column shows the percent Ramachandran outliers of the chain as a percentile score with respect to all X-ray entries followed by that with respect to entries of similar resolution.

The Analysed column shows the number of residues for which the backbone conformation was analysed, and the total number of residues.

Mol	Chain	Analysed	Favoured	Allowed	Outliers	Percentiles
1	A	698/893 (78%)	674 (97%)	22 (3%)	2 (0%)	41 21

All (2) Ramachandran outliers are listed below:

Mol	Chain	Res	Type
1	A	78	THR
1	A	402	SER

### 5.3.2 Protein sidechains [i](#)

In the following table, the Percentiles column shows the percent sidechain outliers of the chain as a percentile score with respect to all X-ray entries followed by that with respect to entries of similar resolution.

The Analysed column shows the number of residues for which the sidechain conformation was analysed, and the total number of residues.

Mol	Chain	Analysed	Rotameric	Outliers	Percentiles
1	A	581/767 (76%)	574 (99%)	7 (1%)	71 54

All (7) residues with a non-rotameric sidechain are listed below:

Mol	Chain	Res	Type
1	A	222	PHE
1	A	513	ARG
1	A	518	GLU
1	A	603[A]	SER
1	A	603[B]	SER
1	A	616	TYR
1	A	688	ASP

Some sidechains can be flipped to improve hydrogen bonding and reduce clashes. All (1) such sidechains are listed below:

Mol	Chain	Res	Type
1	A	82	ASN

### 5.3.3 RNA [i](#)

There are no RNA molecules in this entry.

### 5.4 Non-standard residues in protein, DNA, RNA chains [i](#)

There are no non-standard protein/DNA/RNA residues in this entry.

### 5.5 Carbohydrates [i](#)

There are no monosaccharides in this entry.

### 5.6 Ligand geometry [i](#)

Of 5 ligands modelled in this entry, 2 are monoatomic - leaving 3 for Mogul analysis.

In the following table, the Counts columns list the number of bonds (or angles) for which Mogul statistics could be retrieved, the number of bonds (or angles) that are observed in the model and the number of bonds (or angles) that are defined in the Chemical Component Dictionary. The Link column lists molecule types, if any, to which the group is linked. The Z score for a bond length (or angle) is the number of standard deviations the observed value is removed from the expected value. A bond length (or angle) with  $|Z| > 2$  is considered an outlier worth inspection. RMSZ is the root-mean-square of all Z scores of the bond lengths (or angles).

Mol	Type	Chain	Res	Link	Bond lengths			Bond angles		
					Counts	RMSZ	# $ Z  > 2$	Counts	RMSZ	# $ Z  > 2$
3	GTR	A	902[B]	-	10,13,13	0.76	0	15,19,19	1.12	1 (6%)
3	GTR	A	903	-	10,13,13	1.45	1 (10%)	15,19,19	1.02	1 (6%)
2	ADA	A	901[A]	-	10,13,13	0.72	0	15,19,19	1.18	1 (6%)

In the following table, the Chirals column lists the number of chiral outliers, the number of chiral centers analysed, the number of these observed in the model and the number defined in the Chemical Component Dictionary. Similar counts are reported in the Torsion and Rings columns. '-' means no outliers of that kind were identified.

Mol	Type	Chain	Res	Link	Chirals	Torsions	Rings
3	GTR	A	902[B]	-	-	0/0/24/24	0/1/1/1
3	GTR	A	903	-	-	0/0/24/24	0/1/1/1
2	ADA	A	901[A]	-	-	0/0/24/24	0/1/1/1

All (1) bond length outliers are listed below:

Mol	Chain	Res	Type	Atoms	Z	Observed(Å)	Ideal(Å)
3	A	903	GTR	O1-C1	2.25	1.46	1.39

All (3) bond angle outliers are listed below:

Mol	Chain	Res	Type	Atoms	Z	Observed(°)	Ideal(°)
3	A	902[B]	GTR	O5-C5-C4	2.56	113.12	108.91
2	A	901[A]	ADA	O5-C5-C4	2.55	113.11	108.91
3	A	903	GTR	O3-C3-C2	2.34	115.77	110.35

There are no chirality outliers.

There are no torsion outliers.

There are no ring outliers.

1 monomer is involved in 1 short contact:

Mol	Chain	Res	Type	Clashes	Symm-Clashes
3	A	903	GTR	1	0

## 5.7 Other polymers [i](#)

There are no such residues in this entry.

## 5.8 Polymer linkage issues [i](#)

There are no chain breaks in this entry.

## 6 Fit of model and data [i](#)

### 6.1 Protein, DNA and RNA chains [i](#)

In the following table, the column labelled '#RSRZ> 2' contains the number (and percentage) of RSRZ outliers, followed by percent RSRZ outliers for the chain as percentile scores relative to all X-ray entries and entries of similar resolution. The OWAB column contains the minimum, median, 95<sup>th</sup> percentile and maximum values of the occupancy-weighted average B-factor per residue. The column labelled 'Q< 0.9' lists the number of (and percentage) of residues with an average occupancy less than 0.9.

Mol	Chain	Analysed	<RSRZ>	#RSRZ>2	OWAB(Å <sup>2</sup> )	Q<0.9
1	A	694/893 (77%)	-0.33	8 (1%) 79 78	11, 17, 39, 87	0

All (8) RSRZ outliers are listed below:

Mol	Chain	Res	Type	RSRZ
1	A	61	LYS	3.0
1	A	63	ILE	2.6
1	A	76	ASN	2.5
1	A	78	THR	2.3
1	A	718	ASP	2.1
1	A	79	THR	2.0
1	A	22	PRO	2.0
1	A	443	ASN	2.0

### 6.2 Non-standard residues in protein, DNA, RNA chains [i](#)

There are no non-standard protein/DNA/RNA residues in this entry.

### 6.3 Carbohydrates [i](#)

There are no monosaccharides in this entry.

### 6.4 Ligands [i](#)

In the following table, the Atoms column lists the number of modelled atoms in the group and the number defined in the chemical component dictionary. The B-factors column lists the minimum, median, 95<sup>th</sup> percentile and maximum values of B factors of atoms in the group. The column labelled 'Q< 0.9' lists the number of atoms with occupancy less than 0.9.

Mol	Type	Chain	Res	Atoms	RSCC	RSR	B-factors( $\text{\AA}^2$ )	Q<0.9
3	GTR	A	903	13/13	0.89	0.21	35,51,57,60	0
3	GTR	A	902[B]	13/13	0.97	0.08	16,18,19,20	13
2	ADA	A	901[A]	13/13	0.98	0.08	16,17,19,20	13
5	NA	A	905	1/1	0.99	0.04	16,16,16,16	0
4	CL	A	904	1/1	0.99	0.09	18,18,18,18	0

## 6.5 Other polymers [i](#)

There are no such residues in this entry.