



wwPDB X-ray Structure Validation Summary Report ⓘ

May 22, 2020 – 02:25 am BST

PDB ID : 1I0D
Title : HIGH RESOLUTION STRUCTURE OF THE ZINC/CADMIUM-CONTAINING PHOSPHOTRIESTERASE FROM PSEUDOMONAS DIMINUTA
Authors : Holden, H.M.; Benning, M.M.; Raushel, F.M.; Shim, H.
Deposited on : 2001-01-29
Resolution : 1.30 Å(reported)

This is a wwPDB X-ray Structure Validation Summary Report for a publicly released PDB entry.

We welcome your comments at validation@mail.wwpdb.org

A user guide is available at

<https://www.wwpdb.org/validation/2017/XrayValidationReportHelp>

with specific help available everywhere you see the ⓘ symbol.

The following versions of software and data (see [references ⓘ](#)) were used in the production of this report:

MolProbity : 4.02b-467
Mogul : 1.8.5 (274361), CSD as541be (2020)
Xtrriage (Phenix) : **NOT EXECUTED**
EDS : **NOT EXECUTED**
Percentile statistics : 20191225.v01 (using entries in the PDB archive December 25th 2019)
Ideal geometry (proteins) : Engh & Huber (2001)
Ideal geometry (DNA, RNA) : Parkinson et al. (1996)
Validation Pipeline (wwPDB-VP) : 2.11

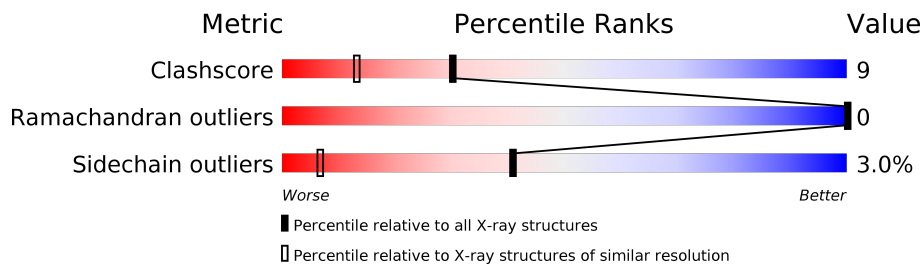
1 Overall quality at a glance

The following experimental techniques were used to determine the structure:

X-RAY DIFFRACTION

The reported resolution of this entry is 1.30 Å.

Percentile scores (ranging between 0-100) for global validation metrics of the entry are shown in the following graphic. The table shows the number of entries on which the scores are based.



Metric	Whole archive (#Entries)	Similar resolution (#Entries, resolution range(Å))
Clashscore	141614	1101 (1.30-1.30)
Ramachandran outliers	138981	1058 (1.30-1.30)
Sidechain outliers	138945	1058 (1.30-1.30)

The table below summarises the geometric issues observed across the polymeric chains and their fit to the electron density. The red, orange, yellow and green segments on the lower bar indicate the fraction of residues that contain outliers for ≥ 3 , 2, 1 and 0 types of geometric quality criteria respectively. A grey segment represents the fraction of residues that are not modelled. The numeric value for each fraction is indicated below the corresponding segment, with a dot representing fractions $\leq 5\%$.

Note EDS was not executed.

Mol	Chain	Length	Quality of chain
1	A	332	
1	B	332	

The following table lists non-polymeric compounds, carbohydrate monomers and non-standard residues in protein, DNA, RNA chains that are outliers for geometric or electron-density-fit criteria:

Mol	Type	Chain	Res	Chirality	Geometry	Clashes	Electron density
5	EDO	A	417	-	-	X	-
5	EDO	B	418	-	-	X	-

2 Entry composition i

There are 8 unique types of molecules in this entry. The entry contains 5923 atoms, of which 0 are hydrogens and 0 are deuteriums.

In the tables below, the ZeroOcc column contains the number of atoms modelled with zero occupancy, the AltConf column contains the number of residues with at least one atom in alternate conformation and the Trace column contains the number of residues modelled with at most 2 atoms.

- Molecule 1 is a protein called PHOSPHOTRIESTERASE.

Mol	Chain	Residues	Atoms					ZeroOcc	AltConf	Trace
			Total	C	N	O	S			
1	A	331	2556	1617	453	479	7	0	9	0
1	B	331	2538	1603	455	473	7	0	7	0

- Molecule 2 is ZINC ION (three-letter code: ZN) (formula: Zn).

Mol	Chain	Residues	Atoms		ZeroOcc	AltConf
2	B	1	Total	Zn	0	0
			1	1		
2	A	1	Total	Zn	0	0
			1	1		

- Molecule 3 is CADMIUM ION (three-letter code: CD) (formula: Cd).

Mol	Chain	Residues	Atoms		ZeroOcc	AltConf
3	B	1	Total	Cd	0	0
			1	1		
3	A	1	Total	Cd	0	0
			1	1		

- Molecule 4 is SODIUM ION (three-letter code: NA) (formula: Na).

Mol	Chain	Residues	Atoms		ZeroOcc	AltConf
4	B	1	Total	Na	0	0
			1	1		
4	A	1	Total	Na	0	0
			1	1		

- Molecule 5 is 1,2-ETHANEDIOL (three-letter code: EDO) (formula: C₂H₆O₂).



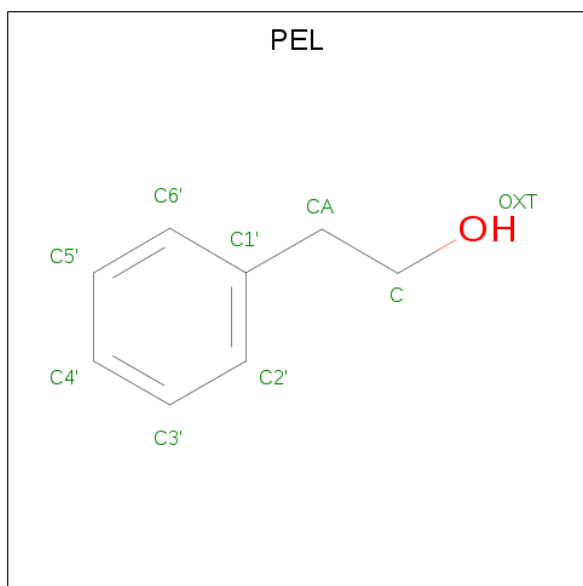
Mol	Chain	Residues	Atoms	ZeroOcc	AltConf
5	A	1	Total C O 5 2 3	0	1
5	A	1	Total C O 4 2 2	0	0
5	A	1	Total C O 4 2 2	0	0
5	A	1	Total C O 4 2 2	0	0
5	A	1	Total C O 4 2 2	0	0
5	A	1	Total C O 4 2 2	0	0
5	A	1	Total C O 4 2 2	0	0
5	A	1	Total C O 4 2 2	0	0
5	A	1	Total C O 4 2 2	0	0
5	B	1	Total C O 5 2 3	0	1
5	B	1	Total C O 4 2 2	0	0
5	B	1	Total C O 4 2 2	0	0
5	B	1	Total C O 4 2 2	0	0
5	B	1	Total C O 4 2 2	0	0

Continued on next page...

Continued from previous page...

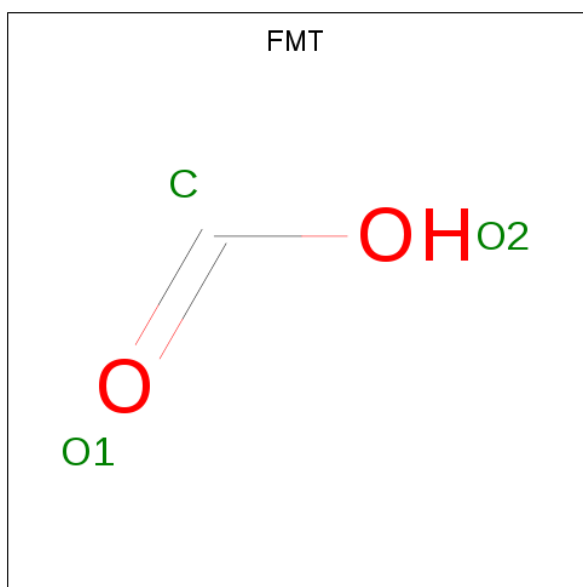
Mol	Chain	Residues	Atoms			ZeroOcc	AltConf
			Total	C	O		
5	B	1	4	2	2	0	0

- Molecule 6 is 2-PHENYL-ETHANOL (three-letter code: PEL) (formula: C₈H₁₀O).



Mol	Chain	Residues	Atoms			ZeroOcc	AltConf
			Total	C	O		
6	A	1	9	8	1	0	0
6	B	1	9	8	1	0	0

- Molecule 7 is FORMIC ACID (three-letter code: FMT) (formula: CH₂O₂).



Mol	Chain	Residues	Atoms	ZeroOcc	AltConf
7	A	1	Total C O 3 1 2	0	0
7	B	1	Total C O 3 1 2	0	0

- Molecule 8 is water.

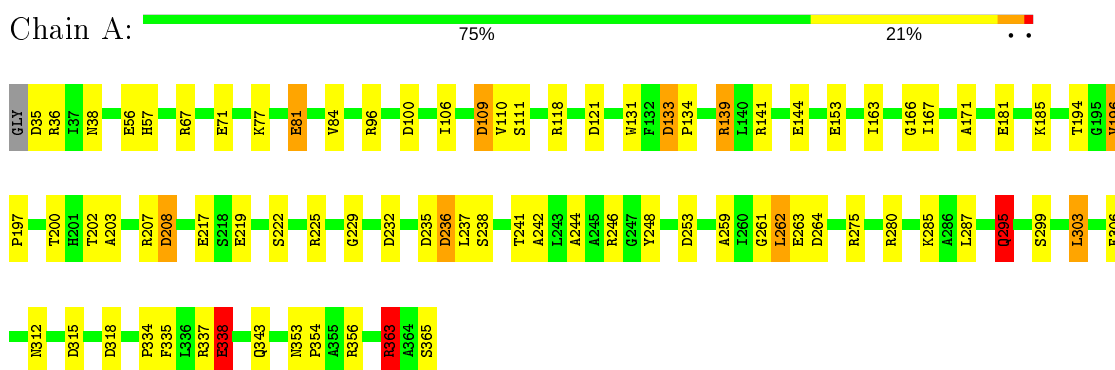
Mol	Chain	Residues	Atoms	ZeroOcc	AltConf
8	A	356	Total O 356 356	0	0
8	B	381	Total O 381 381	0	0

3 Residue-property plots [i](#)

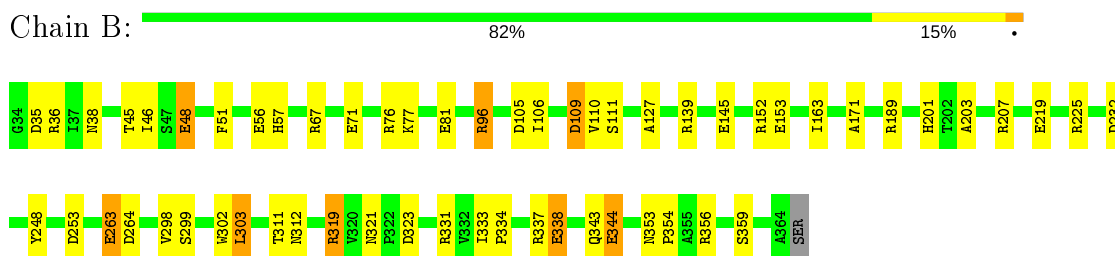
These plots are drawn for all protein, RNA and DNA chains in the entry. The first graphic for a chain summarises the proportions of the various outlier classes displayed in the second graphic. The second graphic shows the sequence view annotated by issues in geometry. Residues are color-coded according to the number of geometric quality criteria for which they contain at least one outlier: green = 0, yellow = 1, orange = 2 and red = 3 or more. Stretches of 2 or more consecutive residues without any outlier are shown as a green connector. Residues present in the sample, but not in the model, are shown in grey.

Note EDS was not executed.

- Molecule 1: PHOSPHOTRIESTERASE



- Molecule 1: PHOSPHOTRIESTERASE



4 Data and refinement statistics

Xtrriage (Phenix) and EDS were not executed - this section is therefore incomplete.

Property	Value	Source
Space group	C 1 2 1	Depositor
Cell constants a, b, c, α , β , γ	128.44Å 90.03Å 68.39Å 90.00° 91.72° 90.00°	Depositor
Resolution (Å)	30.00 – 1.30	Depositor
% Data completeness (in resolution range)	(Not available) (30.00-1.30)	Depositor
R_{merge}	0.06	Depositor
R_{sym}	(Not available)	Depositor
Refinement program	TNT	Depositor
R, R_{free}	0.191 , 0.224	Depositor
Estimated twinning fraction	No twinning to report.	Xtrriage
Total number of atoms	5923	wwPDB-VP
Average B, all atoms (Å ²)	20.0	wwPDB-VP

5 Model quality [i](#)

5.1 Standard geometry [i](#)

Bond lengths and bond angles in the following residue types are not validated in this section: ZN, NA, FMT, EDO, CD, PEL

The Z score for a bond length (or angle) is the number of standard deviations the observed value is removed from the expected value. A bond length (or angle) with $|Z| > 5$ is considered an outlier worth inspection. RMSZ is the root-mean-square of all Z scores of the bond lengths (or angles).

Mol	Chain	Bond lengths		Bond angles	
		RMSZ	# Z >5	RMSZ	# Z >5
1	A	0.85	10/2652 (0.4%)	1.32	45/3605 (1.2%)
1	B	0.85	10/2626 (0.4%)	1.23	24/3566 (0.7%)
All	All	0.85	20/5278 (0.4%)	1.27	69/7171 (1.0%)

The worst 5 of 20 bond length outliers are listed below:

Mol	Chain	Res	Type	Atoms	Z	Observed(Å)	Ideal(Å)
1	B	153	GLU	CD-OE2	7.66	1.34	1.25
1	B	344	GLU	CD-OE2	6.87	1.33	1.25
1	A	56	GLU	CD-OE2	6.31	1.32	1.25
1	A	219	GLU	CD-OE2	6.13	1.32	1.25
1	A	338	GLU	CD-OE2	5.96	1.32	1.25

The worst 5 of 69 bond angle outliers are listed below:

Mol	Chain	Res	Type	Atoms	Z	Observed($^{\circ}$)	Ideal($^{\circ}$)
1	B	356	ARG	NE-CZ-NH1	11.62	126.11	120.30
1	A	236	ASP	CB-CG-OD1	8.81	126.23	118.30
1	B	331	ARG	NE-CZ-NH1	8.59	124.59	120.30
1	A	225	ARG	NE-CZ-NH1	7.76	124.18	120.30
1	A	315	ASP	CB-CG-OD2	-7.47	111.58	118.30

There are no chirality outliers.

There are no planarity outliers.

5.2 Too-close contacts [i](#)

In the following table, the Non-H and H(model) columns list the number of non-hydrogen atoms and hydrogen atoms in the chain respectively. The H(added) column lists the number of hydrogen

atoms added and optimized by MolProbity. The Clashes column lists the number of clashes within the asymmetric unit, whereas Symm-Clashes lists symmetry related clashes.

Mol	Chain	Non-H	H(model)	H(added)	Clashes	Symm-Clashes
1	A	2556	0	2583	46	0
1	B	2538	0	2560	43	1
2	A	1	0	0	0	0
2	B	1	0	0	0	0
3	A	1	0	0	0	0
3	B	1	0	0	0	0
4	A	1	0	0	0	0
4	B	1	0	0	0	0
5	A	37	0	54	14	0
5	B	25	0	36	8	0
6	A	9	0	10	0	0
6	B	9	0	10	0	0
7	A	3	0	0	0	0
7	B	3	0	0	1	0
8	A	356	0	0	8	1
8	B	381	0	0	12	0
All	All	5923	0	5253	97	1

The all-atom clashscore is defined as the number of clashes found per 1000 atoms (including hydrogen atoms). The all-atom clashscore for this structure is 9.

The worst 5 of 97 close contacts within the same asymmetric unit are listed below, sorted by their clash magnitude.

Atom-1	Atom-2	Interatomic distance (Å)	Clash overlap (Å)
1:B:337:ARG:HH22	1:B:343:GLN:HG3	1.26	0.99
1:A:96:ARG:CG	5:A:417:EDO:H21	2.04	0.87
1:B:96:ARG:HD2	5:B:418:EDO:H12	1.61	0.81
1:A:222[A]:SER:HB2	1:A:363:ARG:HH21	1.45	0.81
1:A:96:ARG:HG3	5:A:417:EDO:H21	1.64	0.80

All (1) symmetry-related close contacts are listed below. The label for Atom-2 includes the symmetry operator and encoded unit-cell translations to be applied.

Atom-1	Atom-2	Interatomic distance (Å)	Clash overlap (Å)
1:B:343:GLN:OE1	8:A:1157:HOH:O[4_545]	2.01	0.19

5.3 Torsion angles [i](#)

5.3.1 Protein backbone [i](#)

In the following table, the Percentiles column shows the percent Ramachandran outliers of the chain as a percentile score with respect to all X-ray entries followed by that with respect to entries of similar resolution.

The Analysed column shows the number of residues for which the backbone conformation was analysed, and the total number of residues.

Mol	Chain	Analysed	Favoured	Allowed	Outliers	Percentiles	
1	A	339/332 (102%)	325 (96%)	14 (4%)	0	100	100
1	B	336/332 (101%)	325 (97%)	11 (3%)	0	100	100
All	All	675/664 (102%)	650 (96%)	25 (4%)	0	100	100

There are no Ramachandran outliers to report.

5.3.2 Protein sidechains [i](#)

In the following table, the Percentiles column shows the percent sidechain outliers of the chain as a percentile score with respect to all X-ray entries followed by that with respect to entries of similar resolution.

The Analysed column shows the number of residues for which the sidechain conformation was analysed, and the total number of residues.

Mol	Chain	Analysed	Rotameric	Outliers	Percentiles	
1	A	276/266 (104%)	263 (95%)	13 (5%)	26	2
1	B	272/266 (102%)	266 (98%)	6 (2%)	52	15
All	All	548/532 (103%)	529 (96%)	19 (4%)	41	5

5 of 19 residues with a non-rotameric sidechain are listed below:

Mol	Chain	Res	Type
1	A	303	LEU
1	A	338	GLU
1	B	264	ASP
1	A	299	SER
1	B	299	SER

Some sidechains can be flipped to improve hydrogen bonding and reduce clashes. All (4) such sidechains are listed below:

Mol	Chain	Res	Type
1	A	38	ASN
1	A	212	GLN
1	B	38	ASN
1	B	212	GLN

5.3.3 RNA [i](#)

There are no RNA molecules in this entry.

5.4 Non-standard residues in protein, DNA, RNA chains [i](#)

There are no non-standard protein/DNA/RNA residues in this entry.

5.5 Carbohydrates [i](#)

There are no carbohydrates in this entry.

5.6 Ligand geometry [i](#)

Of 27 ligands modelled in this entry, 6 are monoatomic - leaving 21 for Mogul analysis.

In the following table, the Counts columns list the number of bonds (or angles) for which Mogul statistics could be retrieved, the number of bonds (or angles) that are observed in the model and the number of bonds (or angles) that are defined in the Chemical Component Dictionary. The Link column lists molecule types, if any, to which the group is linked. The Z score for a bond length (or angle) is the number of standard deviations the observed value is removed from the expected value. A bond length (or angle) with $|Z| > 2$ is considered an outlier worth inspection. RMSZ is the root-mean-square of all Z scores of the bond lengths (or angles).

Mol	Type	Chain	Res	Link	Bond lengths			Bond angles		
					Counts	RMSZ	$\# Z > 2$	Counts	RMSZ	$\# Z > 2$
7	FMT	B	369	1,3,2	0,2,2	0.00	-	0,1,1	0.00	-
5	EDO	B	405[B]	-	3,3,3	0.25	0	2,2,2	0.66	0
5	EDO	A	417	-	3,3,3	0.53	0	2,2,2	0.13	0
5	EDO	B	412	-	3,3,3	0.43	0	2,2,2	0.47	0
5	EDO	A	408	-	3,3,3	0.52	0	2,2,2	0.21	0
6	PEL	A	415	-	9,9,9	1.02	0	10,10,10	0.59	0
5	EDO	B	407	-	3,3,3	0.26	0	2,2,2	0.54	0
5	EDO	B	420	-	3,3,3	0.34	0	2,2,2	0.53	0
5	EDO	B	405[A]	-	3,3,3	0.35	0	2,2,2	0.72	0
5	EDO	A	416	-	3,3,3	0.65	0	2,2,2	0.29	0
5	EDO	A	411	-	3,3,3	0.47	0	2,2,2	0.26	0

Mol	Type	Chain	Res	Link	Bond lengths			Bond angles		
					Counts	RMSZ	# Z > 2	Counts	RMSZ	# Z > 2
5	EDO	A	409	-	3,3,3	0.39	0	2,2,2	0.33	0
5	EDO	A	410	-	3,3,3	0.37	0	2,2,2	0.67	0
5	EDO	A	406[A]	-	3,3,3	0.35	0	2,2,2	0.70	0
6	PEL	B	414	-	9,9,9	1.35	0	10,10,10	0.65	0
5	EDO	A	419	-	3,3,3	0.48	0	2,2,2	0.27	0
5	EDO	A	406[B]	-	3,3,3	0.34	0	2,2,2	0.59	0
5	EDO	B	413	-	3,3,3	0.50	0	2,2,2	0.46	0
7	FMT	A	369	1,3,2	0,2,2	0.00	-	0,1,1	0.00	-
5	EDO	B	418	-	3,3,3	0.46	0	2,2,2	0.23	0
5	EDO	A	421	-	3,3,3	0.54	0	2,2,2	0.40	0

In the following table, the Chirals column lists the number of chiral outliers, the number of chiral centers analysed, the number of these observed in the model and the number defined in the Chemical Component Dictionary. Similar counts are reported in the Torsion and Rings columns. '-' means no outliers of that kind were identified.

Mol	Type	Chain	Res	Link	Chirals	Torsions	Rings
5	EDO	B	405[B]	-	-	0/1/1/1	-
5	EDO	A	417	-	-	1/1/1/1	-
5	EDO	B	412	-	-	1/1/1/1	-
5	EDO	A	408	-	-	0/1/1/1	-
6	PEL	A	415	-	-	1/3/3/3	0/1/1/1
5	EDO	B	407	-	-	0/1/1/1	-
5	EDO	B	420	-	-	1/1/1/1	-
5	EDO	A	416	-	-	1/1/1/1	-
5	EDO	B	405[A]	-	-	0/1/1/1	-
5	EDO	A	411	-	-	0/1/1/1	-
5	EDO	A	409	-	-	1/1/1/1	-
5	EDO	A	410	-	-	1/1/1/1	-
5	EDO	A	406[A]	-	-	0/1/1/1	-
6	PEL	B	414	-	-	1/3/3/3	0/1/1/1
5	EDO	A	419	-	-	1/1/1/1	-
5	EDO	A	406[B]	-	-	0/1/1/1	-
5	EDO	B	413	-	-	1/1/1/1	-
5	EDO	B	418	-	-	1/1/1/1	-
5	EDO	A	421	-	-	1/1/1/1	-

There are no bond length outliers.

There are no bond angle outliers.

There are no chirality outliers.

5 of 12 torsion outliers are listed below:

Mol	Chain	Res	Type	Atoms
6	A	415	PEL	OXT-C-CA-C1'
6	B	414	PEL	OXT-C-CA-C1'
5	B	412	EDO	O1-C1-C2-O2
5	A	419	EDO	O1-C1-C2-O2
5	A	410	EDO	O1-C1-C2-O2

There are no ring outliers.

11 monomers are involved in 23 short contacts:

Mol	Chain	Res	Type	Clashes	Symm-Clashes
7	B	369	FMT	1	0
5	A	417	EDO	7	0
5	B	412	EDO	2	0
5	A	408	EDO	2	0
5	B	420	EDO	1	0
5	B	405[A]	EDO	1	0
5	A	416	EDO	3	0
5	A	411	EDO	1	0
5	A	409	EDO	1	0
5	A	410	EDO	1	0
5	B	418	EDO	5	0

5.7 Other polymers [i](#)

There are no such residues in this entry.

5.8 Polymer linkage issues [i](#)

There are no chain breaks in this entry.

6 Fit of model and data

6.1 Protein, DNA and RNA chains

EDS was not executed - this section is therefore empty.

6.2 Non-standard residues in protein, DNA, RNA chains

EDS was not executed - this section is therefore empty.

6.3 Carbohydrates

EDS was not executed - this section is therefore empty.

6.4 Ligands

EDS was not executed - this section is therefore empty.

6.5 Other polymers

EDS was not executed - this section is therefore empty.